

2011 MIDSOUTH SUMMER SCHOOL



WE CAN DO IT!
*CREATING OPPORTUNITIES,
CHANGING COMMUNITIES*

JUNE 5-10, 2011

Table of Contents

- 3—MSSS® Sponsors & Walk for Your Health
- 4-5—Conference & Hotel Information
- 6—NEW CONFERENCE SCHEDULE
- 7-10—Preliminary Program Schedule
- 11—UALR Campus Housing Information & Application
- 12—NEW FEE SCHEDULE
- 13-14—Registration Form
- 15—MSSS® Scholarship Application

Preliminary Brochure

This is a preliminary conference brochure. Changes sometimes occur later with some speakers and workshop titles.

Please check the MidSOUTH website at www.midsouth.ualr.edu for updated schedule information. Detailed workshop and speaker information will be in each participant's packet at onsite registration.

WELCOME TO THE 38TH ANNUAL MID-SOUTH SUMMER SCHOOL

The MidSOUTH Summer School promotes healthy lifestyles in our world, in our communities, and in ourselves. The conference will have exciting new workshops, speakers, and lots of food, door prizes, and games.

Who Should Attend:

- Agency and Hospital Counselors and Therapists
- Alcohol and Drug Counselors
- Clinical Supervisors
- Psychologists
- Ministers and Faith-Based Workers
- Employee Assistance Program Personnel
- Agency Administrators
- Mental Health Professionals
- Social Workers
- Educators and School Counselors
- Nurses
- Family Service Workers
- Prevention Specialists and Consultants
- Community Organizers
- Correction and Parole Personnel
- Law Enforcement and Community Police Personnel
- Licensed Professional Counselors
- Private Practitioners
- State Agency Personnel



Contact Information

Charlotte Besch, Program Manager
Phone: 501-569-8459
Fax: 501-569-3364
Email: cabesch@midsouth.ualr.edu

Web Site: www.midsouth.ualr.edu
for online registration

Mailing Address:
MSSS/MidSOUTH/UALR
Physical Plant Room 103
2801 S. University Ave.
Little Rock, AR 72204



Artwork Credits:
Brochure art designed
by Grace Zobkov.
Brochure, photos and
graphic art designed by
Angie Gomez.

Thank You to Our Wonderful Sponsors!

Our Co-Sponsors

MidSOUTH, School of Social Work
University of Arkansas at Little Rock
&
Office of Alcohol and Drug Abuse
Prevention, Division of Behavioral
Health Services, Arkansas
Department of Human Services

Our Contributing Sponsors

Division of Children and Family
Services, Arkansas Department of
Human Services

The Bridgeway Hospital

RECOVER Programs
Baptist Health System

Arkansas Commission on Child Abuse,
Rape, and Domestic Violence

Mid-America Addictions Technology
Transfer Center

Hazel Street for Boys, Four Winds
Recovery Ranch for Girls, and
Little Rock Outreach

Arkansas Association of Alcoholism and
Drug Abuse Counselors

Arkansas Substance Abuse
Certification Board

Arkansas Prevention Network

Arkansas Prevention Certification Board

We gratefully acknowledge the support of our sponsors, and we sincerely thank them for their help.

Let's Get Started!

Your Registration Includes:

- **A NEW SCHEDULE!**
See page 6 for the new times!
- **24 hours of continuing education**, plus 6 hours of workforce development, for 30 HOURS OF QUALITY CONTINUING EDUCATION!
- **Nationally recognized speakers and experts** in the fields of substance abuse, prevention, and mental health.
- **Lots of food and fun!** During the week of MidSOUTH, we have receptions, food, door prizes and giveaways, a free conference T-shirt, and lots of fun activities.

Sign Up
for MSSS®
Today!



Walk for Your Health

After you get to the conference, walk in this fun event. To promote a healthy lifestyle, *Walk for Your Health*, which will be held Wednesday, June 8th, at 7:00 a.m. The route is a 1.5 mile loop around campus. **All participants will receive a free T-shirt for participating.**

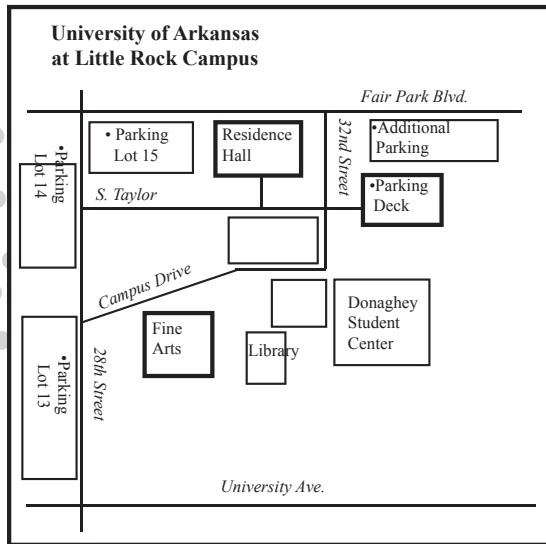
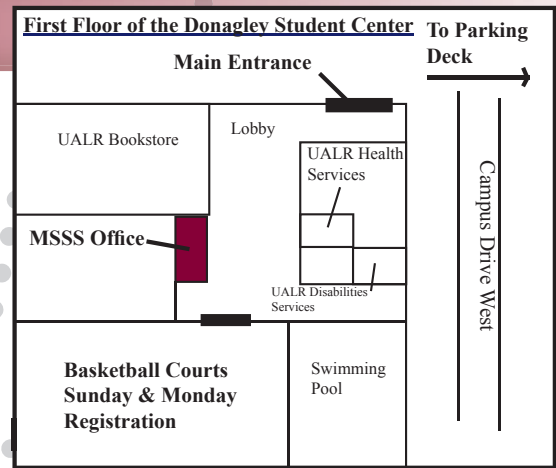
CONFERENCE INFORMATION

Registration Form - page 13-14

Registration Times and Location

- 1:30-4:30 p.m., Sunday, June 5
 - 7:30-10:30 a.m., Monday, June 6
 - Basketball Courts, Donaghey Student Center
- Participants wishing to register at a later time must come by the MSSS® Office located on the same floor. Please see the map to the right.

Registration Location



UALR Parking

- **Due to continued construction work at UALR, parking for Sunday registration will be designated later.**
PLEASE LOOK FOR CONTINUED UPDATES ON PARKING IN YOUR REGISTRATION CONFIRMATION AND ON OUR WEBSITE:
www.midsouth.ualr.edu
- During the remainder of the conference, parking will be FREE in the UALR Parking Deck and in Parking Lot 13, 14, and 15. Additional parking will be at the corner of University and Asher in the shopping center with Big Lots.
- Parking for the Residence Hall will be in Lot 15.
- All other parking lots on campus are restricted to paying students and staff and are regulated with gates. For handicap parking, see Persons with Disabilities section below.

Continuing Education Hours

There are a possible 30 continuing education hours for the 2011 MidSOUTH Summer School, if participants attend all events including the conference orientation. In order to receive continuing education hours, each participant must fill out a continuing education application form that will be included in each registration packet and return it to the MSSS® office. Continuing education hours must be applied for by September 19, 2011 to be received free of charge. After September 19, a \$10.00 fee will be charged for verification of hours or duplicate certificates.

The MidSOUTH Summer School will apply for educational approval from:

- Arkansas Substance Abuse Certification Board
- National Association of Social Workers (NASW) for nurses and licensed professional counselors
- Arkansas Prevention Certification Board
- Society for Public Health Education (SOPHE)
- For Social Work continuing education hours, the boards of Louisiana and Arkansas do not require pre-approval.

Please submit your hours to these boards after the conference is over. For information on approval from other state boards, please call the MidSOUTH staff at 501-569-8459.

Persons with Disabilities

It is the policy of UALR and MidSOUTH to accommodate participants with disabilities, pursuant to federal and state law.

Disability Parking:

- Persons with disabilities, who need parking tags for handicap parking, should call and reserve them from the Office of Health Services at 501-569-3188.
- Handicap parking spaces are located in the parking lots near the Donaghey Student Center.
- Parking tags and cards will need to be picked up at Sunday registration, if possible. If you cannot pick these up on that day, please inform Health Services to make other arrangements.

Other Disability Considerations: If other considerations are needed, please contact the Office of Disabilities Support Services at 501-569-3143.



Exhibit Area

The MSSS[®] exhibit area is a great place to network with counselors, educators, mental health practitioners, and human service agency representatives.

The fee for an exhibit booth is \$500.00. Fees include 2 registrations (worth \$430) and all conference functions in addition to booth space. For information and an exhibit packet, contact Charlotte Besch, 501-569-8459.

AAADAC Bookstore

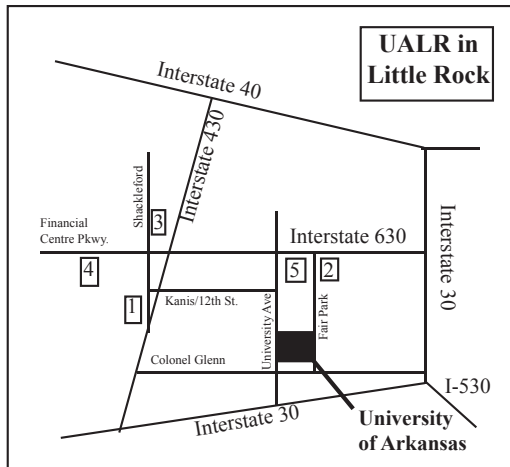
The Arkansas Association of Alcoholism and Drug Abuse Counselors (AAADAC) Bookstore and coffee breaks are held in the exhibit area, which guarantees a regular flow of participants by the exhibit booths. The Bookstore offers the latest books and tapes from the speakers, who will be presenting at the conference, as well as a wonderful selection of books about recovery, personal growth, and counseling.

Hotels

1. The **Wingate Inn** is the conference hotel and is located at 1212 S. Shackelford. The rate for single or double occupancy is \$89.00/night. When making reservations, please call 501-227-6800, and identify yourself as attending the UALR MidSOUTH Summer School. Please register before May 12, 2011 to get the conference rate.

Other Area Hotels:

2. The **LaQuinta Inn** is located at Fair Park and I-630. Please call 501-664-7000.
3. The **Crowne Plaza**, please call 501-223-3000 or look at www.crowneplazalittlerock.com.
4. The **Embassy Suites**, please call 501-312-9000.
5. The **Hilton Little Rock** is located at 925 S. University Ave., please call 501-664-5020.



Planning the 2011 MidSOUTH Summer School!

A lot of hard work went into the planning of this conference. The Training Task Force for the MidSOUTH Summer School worked with much thought and consideration. A special thanks goes out to them.

- Mariella Barlow, Arkansas Substance Abuse Certification Board
- John Brownlee, MidSOUTH, UALR
- John Chmielewski, MidSOUTH Addictions Training Network
- Michelle Moore-Rather, MidSOUTH Prevention Institute
- Stacy Mullins, Alcohol and Drug Abuse Prevention, DHS
- Phil Hall, Alcohol and Drug Abuse Prevention, DHS
- Kim Brown, Ark. Assoc. of Alcohol & Drug Abuse Counselors
- Ann Patterson, Arkansas Head Start
- Shakuntala Linton, Ark. Collegiate Drug Education Committee
- Joe Hill, Alcohol and Drug Abuse Prevention, DHS
- Hayse Miller, Prev. Resource Center, Family Service Agency
- Dot Newsom, Crowley's Ridge Development Council
- Richard Saucier, Univ. of Arkansas for Medical Sciences
- Lisa Ray, University of Central Arkansas
- Jo Ann Warren, Alcohol and Drug Abuse Prevention, DHS
- Marilyn Wells, VA Medical Center
- Carole Baxter, Recovery Centers of Arkansas
- Tammie Langston, Div. of Children & Family Services, DHS
- Max Snowden, Ark. Commission on Child Abuse, Rape, and Domestic Violence
- Pat Brannin, Alcohol and Drug Abuse Prevention, DHS
- Terry Love, Arkansas Prevention Network
- Cindy Stokes, Harbor House
- Laurie Reh, Decision Point
- Jessica Hestand, Arkansas Prevention Certification Board
- Otistene Smith, Arkansas Department of Education

New Schedule!

In response to your ideas and comments, the MidSOUTH Summer School is streamlining its schedule. We will be offering ethics and clinical supervision all on one day. We will also be offering 1.5 hour workshops as well as 3.0 hour workshops in the afternoon.

The economy has also hit us. For many years, we have been able to offer 30 hours for only \$215.00. Now we will be offering 24 hours for \$215.00 with an additional cost for the day of ethics and clinical supervision.

We still offer the best continuing education at the lowest cost in the state! The conference in 2011 will offer great speakers, up-to-date topics, and fun activities for all!

1. The main part of the conference will be from Sunday, June 5, to Thursday, June 9, with a total of 24 hours of continuing education.
2. Friday, June 10, will be a day for workforce development with workshops such as ethics and clinical supervision, which are 6 hours each.

2011 MidSOUTH Summer School—Total possible continuing education hours = 24.0 **Sunday, June 5, 2011**

1:30-4:30 p.m.—Registration and Exhibitor Set-Up

Monday, June 6, 2011

7:30-10:30 a.m.—Registration

9:30-10:00 a.m.—Conference Orientation

10:30 a.m.-12:00 noon—General Session

12:00-1:30 p.m.—Lunch

1:30-5:00 p.m.—Breakout workshops

1:30-3:00 p.m.

and 3:30-5:00 p.m. for 1.5 hour workshops

1:30-4:30 p.m. for 3.0 hour workshops

Tuesday, June 7, 2011 to Thursday, June 9, 2011

8:30-10:00 a.m.—Short Topic Sessions

10:30 a.m.-12:00 noon—General Session

12:00-1:30 p.m.—Lunch

12:15-1:15 p.m.—Lunch Lecture

1:30-5:00 p.m.—Breakout workshops



Total possible continuing education hours for Monday through Friday = 30.0

Workforce Development Workshop—Total possible continuing education hours = 6.0 **Friday, June 10, 2011**

8:00-9:00 a.m.—Workshop registration

9:00 a.m.-4:30 p.m.—Workshops (Ethics and Clinical Supervision)

12:00-1:30 p.m.—Lunch

PRELIMINARY PROGRAM SCHEDULE

Sunday, June 5, 2011

1:30-4:30 p.m. – Registration

Basketball Courts, Donaghey Student Center

1:30-4:30 p.m. – Exhibit Set-Up

Upper Concourse, Donaghey Student Center

Monday, June 6, 2011

7:30 – 10:30 a.m. – Registration

Basketball Courts, Donaghey Student Center

7:30-8:30 a.m., Monday - Friday

A Continental Breakfast will be served!

9:30 – 10:00 a.m. – Conference Orientation, (0.5 hours)

10:30 - 12:00 noon - General Session, (1.5 hours)

“Diversity: The Gathering of Possibilities”

Clifton Taulbert, author of Eight Habits of the Heart and president, Clifton Taulbert and Associates, Tulsa, OK

Clifton Taulbert and the Building Community Institute is dedicated to ensuring Organizational Effectiveness at all levels. Taulbert’s journey into community is intimately tied to his life as a young boy growing up in the segregated Mississippi Delta. Here he was a beneficiary of the Power of Community, timeless and universal unselfish acts lived out and passed along by ordinary people who became extraordinary leaders. This is the core of the Institute – The Power of Community.

12:00 noon - 1:30 p.m. - Lunch

1:30 - 4:30 p.m. - Concurrent Workshops

Track 1: Substance Abuse and Mental Health Issues

“Continuum of Care: An Evidence-Based Model” (3 hours)

Jennifer Glover-Gallaher, MS, LPC, Life Management Counseling and Consulting

Track 2: Youth and Families

“Effects of Trauma on the Social/Emotional Development of Children” (3 hours)

Dr. Katherine Leslie, Brand New Day Consulting

Track 3: Education and Prevention Issues

“Responding to and Preventing Weapons and Violence on Campus” (3 hours)

Sgt. Richard Davies

“Prescription Drug Management Program” (1.5 hours)

Debbie Levan, MPH, Behavioral Health Services, Inc.

Track 4: Prevention Strategies

“Integral Prevention: Emerging Culture of Well-Being” (3 hours)

Dr. Joel Bennett, PhD, Organizational Wellness and Learning Systems

This brochure will have only the workshop title and presenter listed.

Participants are free to attend any workshop they choose.

Thirty (30) hours of continuing education are offered.



Clifton Taulbert



Jennifer Glover-Gallaher



Richard Davies



MONDAY, 5:00 - 7:00 p.m.
ADAP Reception with Entertainment

Don't miss the music, food, and fun at this wonderful reception.

Come and enjoy yourself, see old friends and make new ones!

PRELIMINARY PROGRAM SCHEDULE

Tuesday, June 7, 2011

8:30 – 10:00 a.m. – Short Topic Sessions (1.5 hours)

“Prescription Drug Management Program”

Debbie Levan, MPH, Behavioral Health Services, Inc.

“Prescription Drug Use in Children”

Kim Light, Ph.D., UAMS Department of Pharmacology

“Gambling Trends in Youth”

Frances Boyde, PhD, Florida Council on Compulsive Gambling

10:30 - 12:00 noon - General Session (1.5 hours)

“Looking to the Future of Behavioral Health: New Designs for Service Delivery and Implications for the Workforce”

Pat Stilen, LCSW, CADAC, Mid-America Addictions Technology Transfer Center (MATTC)

Pat Stilen has provided oversight and direction for projects at MATTC since 2000. Prior to this, she successfully designed and administered substance abuse and mental health treatment services for public and private organizations for over 20 years. Ms. Stilen served on the Center for Substance Abuse Treatment committee responsible for revising the *Addiction Counselor Competencies*.

12:15 noon - 1:15 p.m. - Lunch Lecture (1 hour)

“Legislative Advocacy”

Arkansas Prevention Network

1:30 - 4:30 p.m. - Concurrent Workshops

Track 1: Substance Abuse and Mental Health Issues

“Case Management: An Evidence-Based Model” (3 hours)

Jennifer Glover-Gallaher, MS, LPC, Life Management Counseling and Consulting

“Issues with Gambling Addiction” (3 hours)

Rudy Garza MA, NCGC-II, Rehab Care

Track 2: Youth and Families

“Coming to Grips with Attachment: Developing Mutual Well-Being in Parent-Child Relationships” (3 hours)

Dr. Katharine Leslie, Brand New Day Consulting

“Importance of Engaging Fathers” (3 hours)

Matt Crain, Ed.D., Connecting Fathers and Families

Track 3: Education and Prevention Issues

“Gang Awareness: Teaching Resistance” (3 hours)

Sgt. Richard Davies

Track 4: Prevention Strategies

“Gambling Prevention Strategies” (1.5 hours)

Frances Boyde, PhD, Florida Council on Compulsive Gambling



Pat Stilen



Kim Light



Katharine Leslie

Workshops will be added to this schedule.

Please see our webpage:

www.midsouth.ualr.edu

and your registration confirmation for changes.

6:30 - 8:00 p.m.

Arkansas Prevention Certification Board Banquet

(Tickets can be purchased from APCB. Information will be in your registration confirmation packet.)

Wednesday, June 8, 2011

7:00 a.m. – Walk for Your Health
Donaghey Student Center

8:30 – 10:00 a.m. – Short Topic Sessions (1.5 hours)
“Creative Problem Solving”
Bob Sebourn, MSE

“Lesbian, Gay, Bi-Sexual and Transgender/Transexual Youth Subcultures”
Robert Hess, III, Hess Consulting

10:30 - 12:00 noon - General Session (1.5 hours)
“Tired, Wired, and Mired: Preventing Burnout and Compassion Fatigue in the Midst of Change”
Mark Sanders, LCSW, CADAC, On the Mark Consulting
Mark Sanders is a member of the faculty of the Addictions Studies Program at Governors State University. He is an international speaker in the addictions field whose presentations have reached thousands throughout the United States, Europe, Canada, and the Caribbean Islands. Mark is author of four books and numerous articles and manuals.

12:00 noon - 1:30 p.m. - Lunch

12:15 - 1:15 p.m. - Brownbag Lunch Lecture (1 hour)
“Drug Courts in Arkansas”
Ben Udochi, CCS, Treatment Services, Arkansas Department of Community Correction

1:30 - 4:30 p.m. - Concurrent Workshops

Track 1: Substance Abuse and Mental Health Issues
“Issues with Patients with Co-occurring Disorders” (3 hours)
Mark Sanders, LCSW, CADAC, On the Mark Consulting

Track 2: Youth and Families
“Lesbian, Gay, Bi-Sexual and Transgender/Transexual Youth Prevention Issues (3 hours)
Robert Hess, Hess III Consulting

Track 3: Education and Prevention Issues
“Fathers in Prevention” (3 hours)
Matt Crain, Ed.D., Connecting Fathers and Families

Track 4: Prevention Strategies
“Environmental Practices with Coalitions” (3 hours)
TBA

6:30 - 8:00 p.m.
Arkansas Association of Alcoholism and Drug Abuse Counselors Banquet
(Tickets can be purchased from AAADAC. Information will be in your registration confirmation packet.)



Mark Sanders



Robert Hess



Matt Crain

Friday, June 10, 2011 Workforce Development Workshops (6 hours each)

“Ethical Issues in Counseling”
Rob Covington, PhD, LPC, CCS, LADAC,
Horizon Adolescent Treatment Center,
Western Arkansas Counseling and Guidance
Center (This workshop will count towards
co-occurring disorders ethics.)

“Clinical Supervision: Treatment Knowledge”
Ben Udochi, CCS, Treatment Services,
Arkansas Department of Community

PRELIMINARY PROGRAM SCHEDULE

Thursday, June 9, 2011

8:30 – 10:00 a.m. – Short Topic Sessions, (1.5 hours)

“Issues with Clients with HIV/AIDS”

ABilly S. Jones-Henin, MSW

“Legislative Update in Arkansas”

Thomas Pennington, JD, Arkansas Tech University

“Tobacco Policy in Arkansas”

Carolyn Dresler, MD, MPA, Tobacco Education, Arkansas Department of Health

10:30 - 12:00 noon - General Session, (1.5 hours)

“My Bag, My Home: Homeless by Choice”

Roy Juarez, Jr.

As a young entrepreneur, Roy Juarez, Jr. has been able to develop a successful career, lecturing to thousands of youth. Once a homeless teenager, Roy fought the battle to leave the streets, only to return to them after becoming a graduate of Hardin-Simmons University. Born and raised on the south side of San Antonio, TX, Roy faced situations and obstacles that could have turned him into a negative statistic, but he found a way to overcome those challenges. Roy is a role model for thousands of people through his work as an advocate of education in communities across the country. His life experience inspires them.

12:00 noon - 1:30 p.m. - Lunch

1:30 - 4:30 p.m. - Concurrent Workshops

Track 1: Substance Abuse and Mental Health Issues

“Recovery Oriented Care: Coaching in Recovery” (3 hours)

Kelly Steed, CADC, CAP, Little Rock Outreach

Track 2: Youth and Families

“Mental Health Issues of Bullying” (3 hours)

ABilly S. Jones-Henin, MSW

Track 3: Education and Prevention Issues

“Social Networking, Sexting, and What Schools Can and Should Do” (1.5 hours)

Thomas Pennington, JD, Arkansas Tech University

“Tobacco Prevention 101” (1.5 hours)

Dewayne Alcorn, Tobacco Education, Arkansas Department of Health

Track 4: Prevention Strategies

“Strategic Sustainability Planning: Ensuring the Continuation of Our Efforts” (3 hours)

Robert Hess, Hess III Consulting

5:00 - 7:00 p.m.

Eats and Games: Hamburger Reception with Addictions Trivial Pursuit Game



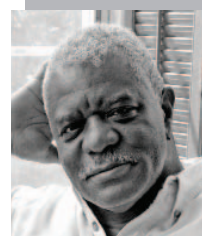
Roy Juarez, Jr.



Thomas Pennington



Carolyn Dresler



ABilly S. Jones-Henin

THURSDAY, 5:00 - 7:00 p.m.

**Addictions Trivial Pursuit Game
with Hamburger Reception**

See how much you really know about prevention, recovery, celebrity addiction mishaps, current trends, and TRIVIAL stuff. The members of the winning team **will win a scholarship to the 2012 MidSOUTH Summer School!** The stakes are higher, so the questions will be harder!

HOUSING OPTIONS AT UALR!

There are two options for housing at UALR. One is in the UALR Residence Hall and the other is in UALR University Commons Apartments. Space is limited, so please register early. Reservations are processed on a first-come, first-served basis. Wheelchair accessible rooms are available in the Residence Hall and the Commons Apartments.

UALR Residence Hall Information:

- The UALR residence hall located at 3101 South Taylor. Parking for the residence hall will be in Lot 10. (See map, page 4.)
- Rooms are grouped in **two-bedroom suites** that include a **kitchenette** (with refrigerator and microwave) and **private bath** (shower only).
- Single Occupancy is one person per bedroom with two people sharing a single bathroom.

Participants wishing to stay in the residence hall will need to bring: Your own linens for a twin-sized bed (sheets, pillows, blankets, towels) and other personal items. Linens can be rented (5 towels, 5 washcloths, 1 set of sheets, and 1 pillow), but are in limited quantities. Extra pillows and blankets will not be provided. The residence hall rooms also do not feature alarm clocks, televisions, tissue dispensers, or other features found in hotel rooms. If you bring a television, please bring a hook up for the cable connection.

UALR Apartment Information:

- The UALR University Commons Apartments have the same parking accommodations and address as the Residence Hall.
- The apartments are within a one block walking distance from the Donaghey Student Center.
- The apartments have 4 private, locked bedrooms, two bathrooms, living room, a full-sized kitchen, and washer and dryer.
- Apartments will be rented with all bedrooms occupied, meaning 4 people will be sharing one apartment.
- Linens for a full-sized bed (sheets, pillows, blankets, towels) will be furnished. Extra pillows and blankets will not be provided.
- The apartments also do not feature alarm clocks, televisions, tissue dispensers, or other features found in hotel rooms. If you bring a television, please bring a hook up for the cable connection.

GENERAL INFORMATION: (Please type or print) One housing form per participant.

Name _____
Title _____
Organization _____
Address _____
City, State, Zip _____
Phone (_____) _____
Email _____
Male: _____ Female: _____

While preference cannot be guaranteed, please indicate your first choice option: (Check appropriate space)
____ Residence Hall or
____ Apartment
If no choice is made, participants will be placed in the Residence Hall.

ROOM RATES: (Per person)

_____ Residence Hall, Single Occupancy (2 people to a suite)	\$32.00 x ____ nights	=	_____
_____ Linen rental (bed & bath linens for Residence Hall) (Linens include: 5 towels, 5 washcloths, 1 set of sheets, 1 pillow)	\$12.00 for the week	=	_____
OR			
_____ Apartment, Single Occupancy (4 people to an apartment)	\$45.00 x ____ nights	=	_____
	TOTAL DUE		_____

Name of preferred suitemate(s) _____

Please list any physical condition that needs to be considered in your room placement: _____

NOTE: ADAP scholarship recipients must go through the MSSS Office for approval!

Check-in times are Sunday, June 5, 12:00 noon to 5:00 p.m.

Check-out by Friday, June 10 by 4:00 p.m.

Expected Check-in date & time: _____

Expected Check-out date & time: _____

PAYMENT:

- **Advanced deposit of \$35.00 is required.**
Make check payable to: UALR HOUSING.
- Check or money order must be attached to housing registration form.
- Total less deposit will be due upon check-in. **Please have a check or exact change.**
- Cancellations before June 1st will be refunded less a \$15.00 handling charge.
- A confirmation card will be sent out to participants to confirm their reservations.
- Mail this form with the deposit to UALR Office of Student Housing, 2801 S. University Ave., Little Rock, AR 72204.
- **Please have a separate form for each participant.**

PLEASE READ!

This form with deposit **MUST BE MAILED DIRECTLY** to the Office of Student Housing. Please do not mail these requests to the MSSS® office, because they may be lost or their processing may be delayed.

DEADLINE: Housing registration must be received by the Office of Student Housing by **May 9, 2011**, to guarantee reservations.

2011 MSSS FEE SCHEDULE

New Fee Schedule!

2011 MidSOUTH Summer School

Sunday through Thursday, June 5-9, 2011

(possible 24 hours of continuing education)

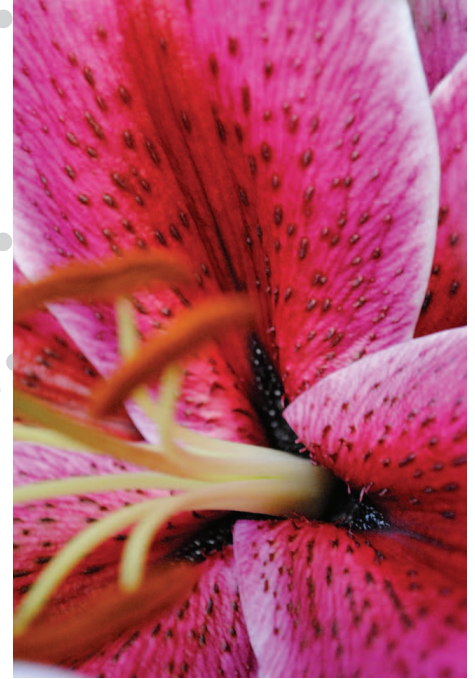
Full time: \$215.00 (before May 15)
3-days: \$170.00
2-days: \$125.00 (1-, 2-, and 3-day rates do not change after May 15)
1-day: \$ 80.00
Late fee for full time: \$245.00 (after May 15)

Workforce Development Workshops

Friday, June 10, 2011

(6 hours of continuing education)

Cost: \$ 45.00



MidSOUTH Summer School + Workforce Development Workshop

(possible 30 hours of continuing education)

Cost: \$260.00 (before May 15)
Late fee: \$290.00 (after May 15)

We know this will be your next question:

What if I want to just take 2 days of the MidSOUTH Summer School and still need my ethics for my recertification?

Answer: Just add \$45.00 to the part-time totals above.

3-days of MSSS® + Workforce Development Workshop = \$170.00 + \$45.00 = \$215.00

2-days of MSSS® + Workforce Development Workshop = \$125.00 + \$45.00 = \$170.00

1-day of MSSS® + Workforce Development Workshop = \$ 80.00 + \$45.00 = \$125.00

Student Rates

MidSOUTH Summer School:

Full time: \$125.00 (before May 15) Late fee: \$170.00 (after May 15)
3-days: \$100.00
2-days: \$ 80.00
1-day: \$ 65.00

For the Workforce Development workshops: Add \$45.00 to the student rates above.

Everyone requesting Student Rates must have a photo copy of your student ID to get the rate.

If registering online, your confirmation will be held until student status is verified.

2011 MSSS REGISTRATION FORM

Please fill out every section of this form. (2 pages) PLEASE PRINT OR TYPE INFORMATION!

Section I: PARTICIPANT INFORMATION I'm a newcomer (first year at MSSS) _____ I'm an oldtimer _____

Name _____

Title _____ Social Security Number _____
or Driver's License Number _____

(Your Social Security Number or Driver's License Number is needed for continuing education record keeping. Your information will be kept confidential.)

Organization _____

Mailing Address _____

City, State, Zip _____

Business Phone (_____) _____ Home Phone (_____) _____

PERSONAL STATISTICS:

Please mark both ethnicity and race.

Ethnicity: Hispanic or Latino Race: White Asian Age: 18-20 Gender: Male
 Non Hispanic or Latino American Indian or Alaskan Native 21-24 Female
 Black or African American 25-44
 Native Hawaiian or 45-64
other Pacific Islander 65+

Section II: CERTIFICATION INFORMATION

I currently hold the following certifications (check all that apply):

Certified Prevention Specialist (CPS) Advanced Certified Alcohol and Drug Abuse Counselor (ACADC)
 Certified Prevention Consultant (CPC) Licensed Alcoholism and Drug Abuse Counselor (LADAC)
 Prevention Specialist in Training (PST) Licensed Assoc. Alcoholism and Drug Abuse Counselor (LAADAC)
 Certified Alcohol and Drug Counselor (CADC) Certified Alcoholism and Drug Abuse Technician (CADAT)
 Certified Clinical Supervisor (CCS) Counselor in Training (CIT)
 Certified Criminal Justice Professional (CCJP) Certified Co-Occurring Disorder Professional (CCDP)

Section III: PROFESSIONAL & PERSONAL INFORMATION:

In my job, my PRIMARY WORK is: Please choose only one. (NOTE: SA = "substance abuse")

SA counselor, residential/outpatient program Prevention specialist
 SA counselor, hospital residential/outpatient program Prevention/education program adm.
 Administrator, SA treatment program, residential/outpatient School administrator
 Administrator, SA treatment program, hospital residential/outpt. School counselor
 SA counselor in training Educator/teacher
 Family service worker or administrator for DCFS School nurse
 ADAP personnel or administrator Nurse
 Dept. of Human Services personnel or administrator Social worker
 (other than DCFS & ADAP) Private practice therapist
 Mental health counselor Rehabilitation specialist
 Psychologist Student
 Dept. of Health personnel or administrator Minister & faith community worker
 Law enforcement personnel Volunteer
 Corrections and/or parole personnel EAP Personnel
 Juvenile Drug Court personnel Adult Drug Court personnel
 Other _____



**Payment Information on reverse side
Both sides must be filled out**



Cut Here

2011 MSSS Registration Form (continued...)

Section IV: CONFERENCE ATTENDANCE WITH FEES - PAYMENT MUST ACCOMPANY REGISTRATION FORM!!!

(Please check one)

2011 MidSOUTH Summer School—Sunday through Thursday, June 5-9, 2011

(possible 24 hours of continuing education)

Sun.-Thur.: _____ \$215.00 (before May 15)
Late fee: _____ \$245.00 (after May 15)
3-days: _____ \$170.00
2-days: _____ \$125.00 (1-, 2-, and 3-day rates do
1-day: _____ \$ 80.00 not change after May 15)

Workforce Development Workshops

Friday, June 10, 2011

(6 hours of continuing education)

One day: _____ \$ 45.00

MidSOUTH Summer School + Workforce Development Workshop

(possible 30 hours of continuing education)

Sun.-Fri. _____ \$260.00 (before May 15)

Late fee: _____ \$290.00 (after May 15)

3-days of MSSS® + Workforce Development Workshop
_____ \$215.00

2-days of MSSS® + Workforce Development Workshop
_____ \$170.00

1-day of MSSS® + Workforce Development Workshop
_____ \$125.00

Student Rates

MidSOUTH Summer School:

Mon.-Thur.: _____ \$125.00 (before May 15)

Late fee: _____ \$170.00 (after May 15)

3-days: _____ \$100.00

2-days: _____ \$ 80.00

1-day: _____ \$ 65.00

For the Workforce Development workshops:
Add \$45.00 to the student rates above.

Everyone requesting Student Rates must have a photo copy of your student ID to get the rate. If registering online, your confirmation will be held until student status is verified.

Amount Enclosed: \$ _____

Payment Type: _____ Check or Money Order (made out to MSSS/UALR)

_____ Agency Purchase Order _____ Credit Card
(Visa or MasterCard only)

Credit Card Payment Process:

Please check one of the following: _____ Visa _____ MasterCard

Name as it appears on card: _____

Card Number: _____

Expiration Date: _____

Verification code from the back of your card: _____



Let's Get Registered!

Full payment must accompany or be made prior to conference attendance.

Please make checks payable to MSSS/UALR. Check, money order, or agency voucher or purchase order must be attached to your registration form. NOTE: Credit card payments will be accepted for the registration fee. Refunds for credit card payments will be made by check back to the individual.

Section V:

ADDITIONAL INFORMATION **(Please check if yes.)**

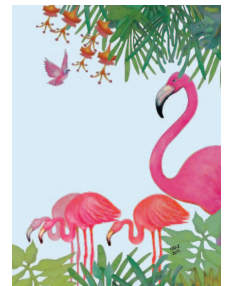
_____ My Agency should be billed for my registration. Please designate person responsible for billing plus their address below:

_____ I am an employee of a sponsoring and/or exhibiting organization and my fee is waived. Please specify organization below:

_____ I am a scholarship recipient. Please indicate which program you received your scholarship from below:

Registration Cancellations and Refunds

Registrations cancelled before May 15, 2011, will be refunded, less a \$50.00 handling charge. No refunds can be made for cancellations made after that date.



Mail Registrations to

MidSOUTH Summer School
UALR/MidSOUTH
2801 S. University Ave.
Little Rock, AR 72204-1099

Online Registrations

• Registration can be made online at the MidSOUTH website, www.midsouth.ualr.edu

• **Only those participants who will be paying with a credit card, can register online.**

• All other registrations with payment or scholarships should be mailed in to the MidSOUTH office. This website is a secure website for credit card use.

For Additional Information

Charlotte Besch, Program Manager
Phone: 501-569-8459
FAX: 501-569-3364
E-mail: cabesch@midsouth.ualr.edu

Cut Here

2011 MSSS SCHOLARSHIP APPLICATION

Scholarships for the conference registration fee are available this year on a limited basis. We will be able to award scholarships for the **registration fee only** to: 1) Individuals employed with ADAP-funded agencies; 2) Individuals from community-based agencies connected with ADAP; and 3) Individuals, who can show severe financial need (documentation of this is necessary).

Participants will be required to work during the conference for this scholarship. Work assignments will consist of being ushers at general sessions, assisting classroom coordinators in passing out handouts during workshops, and helping out at registration. If you are selected for a scholarship, you will receive a letter in the mail with your work assignment.

APPLICATION DEADLINE IS APRIL 8, 2011. RECIPIENTS WILL BE NOTIFIED BY APRIL 15, 2011.

PLEASE READ!

- Send in your registration form along with this form.
- This form **MUST** be completely filled out in order to be considered for a scholarship.
- Please do not call the MidSOUTH Summer School Office requesting a scholarship.



Name _____

Title _____

Organization _____

Address _____

City, State, Zip _____

Phone (_____) _____ (Email) _____

Number of wage earners in the home: _____ Number of dependents: _____

Have you received a scholarship at any prior MidSOUTH Summer School? _____ YES _____ NO

Please explain why you are requesting a scholarship for the MidSOUTH Summer School. **Please address specific financial need, ADAP affiliation, and any other factors concerning your inability to pay the registration fee.** (Feel free to attach additional pages and documentation if necessary.)

NOTE: This part of the application must be filled out.

**Please mail this application to: Scholarship Application
MSSS/MidSOUTH, UALR,
2801 S. University Ave.
Little Rock, AR 72204-1099**



UNIVERSITY
OF ARKANSAS
AT LITTLE ROCK

UNIVERSITY OF ARKANSAS AT LITTLE ROCK
MID-SOUTH SUMMER SCHOOL
2801 SOUTH UNIVERSITY AVENUE
LITTLE ROCK, AR 72204-1099



**THE 2011 MID-SOUTH SUMMER SCHOOL ON ALCOHOL
AND OTHER DRUG ABUSE PROBLEMS®**

IS CO-SPONSORED BY



**MID-SOUTH, SCHOOL OF SOCIAL WORK
UNIVERSITY OF ARKANSAS AT LITTLE ROCK**

&



**THE OFFICE OF ALCOHOL AND DRUG ABUSE PREVENTION
DIVISION OF BEHAVIORAL HEALTH SERVICES
ARKANSAS DEPARTMENT OF HUMAN SERVICES**