

Certificate Issued To:
Millennium Health Supplements
(Cda) Inc.
38 A King St. E.
Bowmanville, ON L1C 1N2
Canada



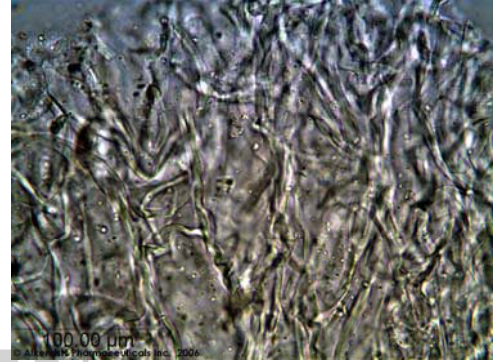
Work performed at:
Alkemists Pharmaceuticals Inc.
1260 Logan Ave B3
Costa Mesa, CA 92626
714-754-HERB (4372)
714-668-9972 (FAX)
E-mail: info@alkemist.com
Web Site: www.alkemist.com

Certificate of Analysis 3 of 3: Hoodia aerial part (060814)
Microscopy with Digital Photo-Documentation

1



2



Company Name:	Millennium Health Supplements (Cda) Inc.
Title:	Hoodia
Plant Part:	aerial part
Sample Received:	8/31/2006
Sample Description:	~40g in a zip lock bag
Source:	N/A
Form of Botanical:	crude plant powder
Appearance:	beige powder with speckles
Lot #:	060814
Sample #:	AU24306MHS
Reference Sample #:	Voucher Specimen AU20604AP; AU19106TA6; AU15606AHP2; AU19004PHX, AU11004CHR, AU02006NW, AU11805MHS1 Hoodia gordonii (Masson) Hoodia gordonii (Masson) Sweet ex Decne authenticated by macroscopic, microscopic &/or TLC studies according to the reference source cited below held at Alkemists Pharmaceuticals, Costa Mesa, CA.
Latin Name:	Hoodia gordonii (Masson) Sweet ex Decne
Examiner:	EMS
Magnification:	(1) 400X
Chemical Reagents:	(1) acidified chloral hydrate glycerol solution
Sample Findings:	(1) fragment of a fiber showing whirled striations
Magnification:	(2) 400X
Chemical Reagents:	(2) acidified chloral hydrate glycerol solution
Sample Findings:	(2) large thin walled parenchyma with wrinkled cell walls
Reference Source:	Method Developed by Alkemists Pharmaceuticals USP-PF, Vol. 27(2) [Mar.-Apr. 2001]; Official Methods of Analysis of AOAC, 16 th Ed.

Comments & Conclusions:

This sample is representative of Hoodia gordonii (Masson) Sweet ex Decne aerial part based on authenticated microscopic references and the consistent characteristic cellular structure of an aerial part as well as the references cited above. The characteristic cellular structures identified in this sample are the fragment of a fiber showing whirled striations seen in micrograph (1) above & in micrograph (2) we see the large thin walled parenchyma with wrinkled cell walls. **These characteristic cellular structures confirm the identity of Hoodia aerial part (060814).**

Analyzed by: Élan M Sudberg
Authorized by: Sidney Sudberg, Director, Alkemists Pharmaceuticals

Report Date: 9/6/2006

This report applies to the sample investigated and is not necessarily indicative of the quality or condition of apparently identical or similar products. This report is for the exclusive use of the party who requested the report and not for public dissemination or use by third parties, including for promotional purposes, without the prior written permission of Alkemists Pharmaceuticals, Inc. This report provides technical results for a specific sample and the report shall not be altered, modified, supplemented or abstracted in any manner. Any violation of these conditions renders the report and its results void.

© 2006 Alkemists Pharmaceuticals, Inc. All Rights Reserved