



Province of the  
**EASTERN CAPE**  
EDUCATION

**NATIONAL  
SENIOR CERTIFICATE**

**GRADE 11**

**NOVEMBER 2012**

**CONSUMER STUDIES**

**MARKS: 200**

**TIME: 3 hours**

---

This question paper consists of 21 pages including an answer sheet.

---

**INSTRUCTIONS AND INFORMATION**

1. SECTION A, B, C and D are compulsory. Choose ONE question from SECTION E, according to the practical component you have done.
2. SECTION A must be answered on the ANSWER SHEET provided.
3. Number your answers correctly according to the numbering system in this question paper.
4. Begin each question on a NEW page.
5. Write neatly and clearly.

**SECTION A****QUESTION 1**

1.1 Various possible options are provided as answers to the following questions. Choose the answer and make a cross (X) in the block (A – D) next to the question number (1.1.1 – 1.1.18) on the ANSWER SHEET. No marks will be awarded if more than ONE cross (X) appears for an answer.

1.1.1 A function of the National Consumer Forum is to ...

- A act as mediator between tenants and landlords.
- B protect and promote.
- C make consumers aware of their rights and responsibilities.
- D set specific standards to protect the health and safety to consumers.

(1)

1.1.2 The ... deals with complaints about misleading advertisements.

- A NHBRC
- B RMI
- C ASA
- D SABS

(1)

1.1.3 Desmond cannot afford the service of an attorney to help him sort out the problem with the builder, but he could seek legal assistance from ...

- A an ombudsman.
- B the Legal Aid Board.
- C the Law Society of South Africa.
- D the Small Claims Court.

(1)

1.1.4 A detailed plan which shows income, spending and saving for a particular period is a/an ...

- A estimated expenses.
- B bank statement.
- C household budget.
- D estimated income.

(1)

1.1.5 Salary before deductions is called ... salary.

- A gross
- B annual
- C fringe
- D net

(1)

- 1.1.6 ... is when the cost of goods goes up and the value of money goes down.
- A Budget
  - B Quintile
  - C Statistics
  - D Inflation
- (1)
- 1.1.7 Select from the list below the most suitable sandwich spread for a growing child.
- A Peanut butter
  - B Apricot jam
  - C Marmite
  - D Syrup
- (1)
- 1.1.8 The carbohydrate in milk is called ...
- A casein
  - B lactose.
  - C glucose.
  - D lactalbumin.
- (1)
- 1.1.9 Which ONE of the following nutrients will raise blood glucose levels the most?
- A Protein
  - B Carbohydrates
  - C Fibre
  - D Fat
- (1)
- 1.1.10 Which of the following foods will provide the most kilojoules?
- A A teaspoon sugar
  - B A teaspoon ice-cream
  - C A teaspoon peanut butter
  - D A teaspoon butter
- (1)
- 1.1.11 What supplement should women take if they plan a pregnancy in order to reduce the risk of spina bifida in the baby?
- A Vitamin B<sub>1</sub>
  - B Vitamin B<sub>12</sub>
  - C Folic acid
  - D Ascorbic acid
- (1)
- 1.1.12 Which micro-organism withstands high temperature?
- A Mould
  - B Yeast
  - C Bacteria
  - D Enzymes
- (1)

1.1.13 Select from the list below the combination of food that will best meet the dietary guidelines for a teenager's packed lunch.

1. Brown bread sandwich with cheese and lettuce.
2. Brown bread rolls with chicken mayonnaise.
3. White bread sandwich with cheese and lettuce.
4. Flavoured sweetened milk.
5. Pure fruit juice.
6. Coke.
7. Oatmeal cookie.
8. Coconut cookie
9. Shortbread biscuit.

- A 1, 5 and 7
- B 1, 4 and 8
- C 2, 4 and 8
- D 3, 6 and 9

(2)

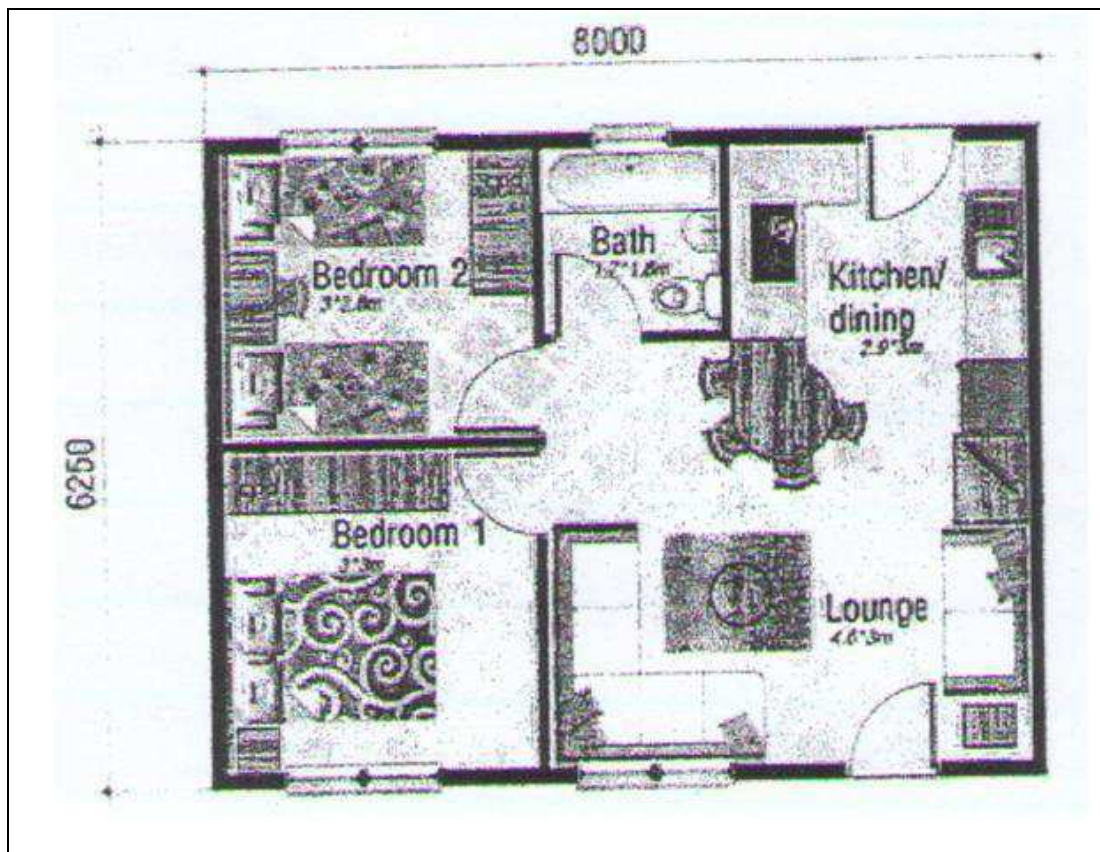
1.1.14 The following factors have an influence on a person's basal metabolic rate:

1. Body type
2. Season
3. Gender
4. Rate of growth
5. Allergens
6. Age
7. Culture

- A 1, 3, 4 and 6
- B 1, 2, 4 and 7
- C 2, 3, 5 and 6
- D 3, 5, 6 and 7

(3)

Study the floor plan below and answer the questions that follow.



1.1.15 Identify the main type of balance in bedroom 2.

- A Repetitive balance.
- B Formal balance.
- C Informal balance.
- D Radial balance.

(2)

1.1.16 In bedroom 2, rhythm is achieved by ...

- A grading of colour.
- B alternation of tall and short items.
- C continuous line in the doorway.
- D radiation on the wooden desk.

(2)

1.1.17 Suggest a suitable analogous colour scheme for bedroom 1.

- A Light blue, blue and dark blue.
- B Light blue, reddish orange and yellow orange.
- C Light blue, orange and white.
- D Light blue, blue purple and purple.

(1)

1.1.18 Ways in which this house can appear more spacious.

1. Use warm colours for the upholstery of the couches, curtains and duvets.
2. Use blinds instead of curtains.
3. Paint the rooms in a light colour.
4. Use textiles with large patterns.
5. Use medium and coarse textures.
6. Limit the use of small, loose carpets.
7. Rather use a complementary than monochromatic colour scheme.

- A 1, 2 and 5  
 B 1, 4 and 7  
 C 2, 3 and 6  
 D 3, 4 and 6

(3)

1.2 Match the food in COLUMN A with the most important nutrient provided by the food in COLUMN B. Make a cross (X) over the correct letter (A – H) next to the number (1.2.1 – 1.2.6) on your answer sheet.

COLUMN A Food		COLUMN B Most important nutrient provided by the food	
1.2.1	Rice	A	Calcium
1.2.2	Cream	B	Fibre
1.2.3	Eggs	C	Lipids
1.2.4	Guava	D	Iron
1.2.5	Butternut	E	Protein
1.2.6	Whole-wheat bread	F	Starch
		G	Vitamin A
		H	Vitamin C

(6 x 1)

(6)

1.3 Choose a description from COLUMN B that matches the outlet in COLUMN A. Make a cross (X) over the correct letter (A – G) next to the number (1.3.1 – 1.3.4) on the answer sheet.

COLUMN A Outlet		COLUMN B DESCRIPTION	
1.3.1	Departmental stores	A	The producer delivers goods to the house
1.3.2	Chain stores	B	Offers advice to the consumer in urban areas
1.3.3	Hypermarkets	C	Outlet focuses on a particular product line
1.3.4	Speciality stores	D	Goods are bought from the same warehouse for all shops
		E	A self-service food store
		F	Various sections in a shop sell specific items
		G	Wide variety of goods available

(4 x 1)

(4)

1.4 Give ONE word for the following descriptions. Write the correct word next to the number (1.4.1 – 1.4.5) on your answer sheet.

1.4.1 This principle ensures that the elements of design are unified

1.4.2 The logo that is displayed on products that are made in South Africa

1.4.3 The scaled drawings of all the rooms in a particular building

1.4.4 Natural paths that people follow when entering or leaving a room

1.4.5 The type of lighting that illuminates a specific work area

(5 x 1) (5)

**TOTAL SECTION A: 40**



**SECTION B: FOOD AND NUTRITION****QUESTION 2**

2.1 Explain the following:

2.1.1 Food infection (2)

2.1.2 Food poisoning (2)

2.2 Read the case study below and answer the questions that follow.

Analie's lunch at a restaurant includes the following:

***Stuffed chicken, rice and tomato salad with a cup of tea.***

Towards the evening Analie developed a severe headache and abdominal cramps and the doctor diagnosed food poisoning.

2.2.1 Which of the food Analie ate, affected her? (2)

2.2.2 Which micro-organism has most likely caused these symptoms? (2)

2.3 Mention FOUR precautionary measures to be taken by the restaurant to prevent a re-occurrence. (4)

2.4 Read the following and answer the questions that follow.

Bongi had the following for breakfast:

50 g All Bran Flakes

120 ml milk

10 ml sugar

1 cup (250 ml) tea with 50 ml low fat milk

2.4.1 Which of the food have the most fibre? (2)

2.4.2 Why is it important to have fibre in the diet? (3)

2.4.3 Which of the above food have the most protein? (2)

2.4.4 Give TWO reasons why proteins are important. (2)

2.5 Discuss the following food outlet:

2.5.1 What is a supermarket? (2)

2.5.2 Discuss the advantages and disadvantages of shopping at a supermarket. Tabulate your answer as follows:

Advantages	Disadvantages
(3)	(3)

(6)

2.6 Give FIVE guidelines for selecting and buying of food. (5)

2.7 Complete the following table. Tabulate your answer as follows:

Vitamin	Main Function	Food source
Vitamin A	•	(1)
	• (2)	
Vitamin D	•	(1)
	• (2)	

(6)

**TOTAL SECTION B: 40**

**SECTION C: CLOTHING**

**QUESTION 3**

3.1 Explain the following:

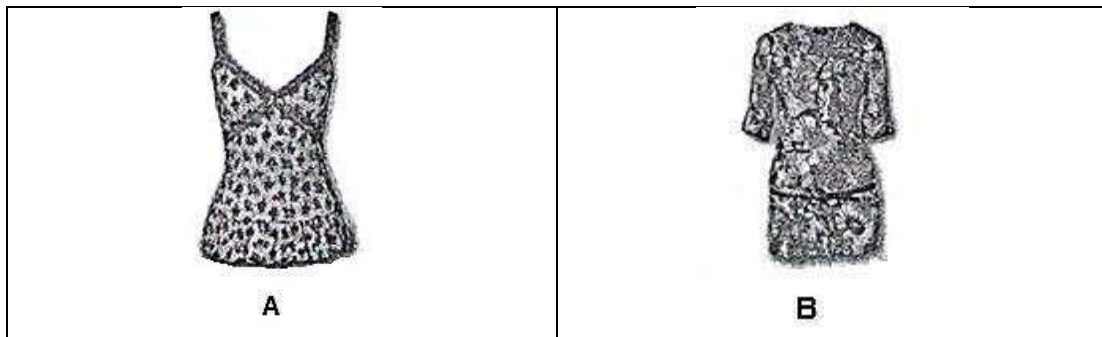
3.1.1 Style (2)

3.1.2 Silhouette (2)

3.2 List FIVE factors that can be used to determine the quality of a garment. (5)

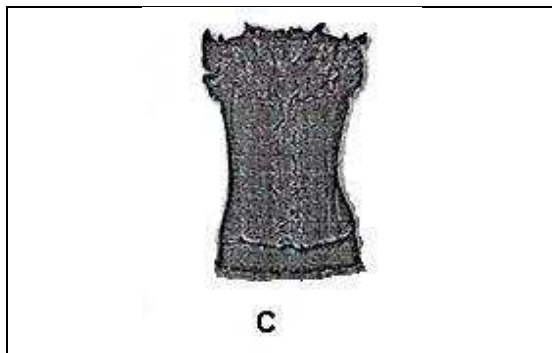
3.3 “The timing of purchases can also influence the price of clothing”. Discuss this statement. (5)

3.4 Study the pictures of three tops and answer the questions that follow.



**White with pink and green roses and lace over shoulders**

**Floral patterns in blue, yellow and pink. Brown belt.**



**Light brown with lace inserts**

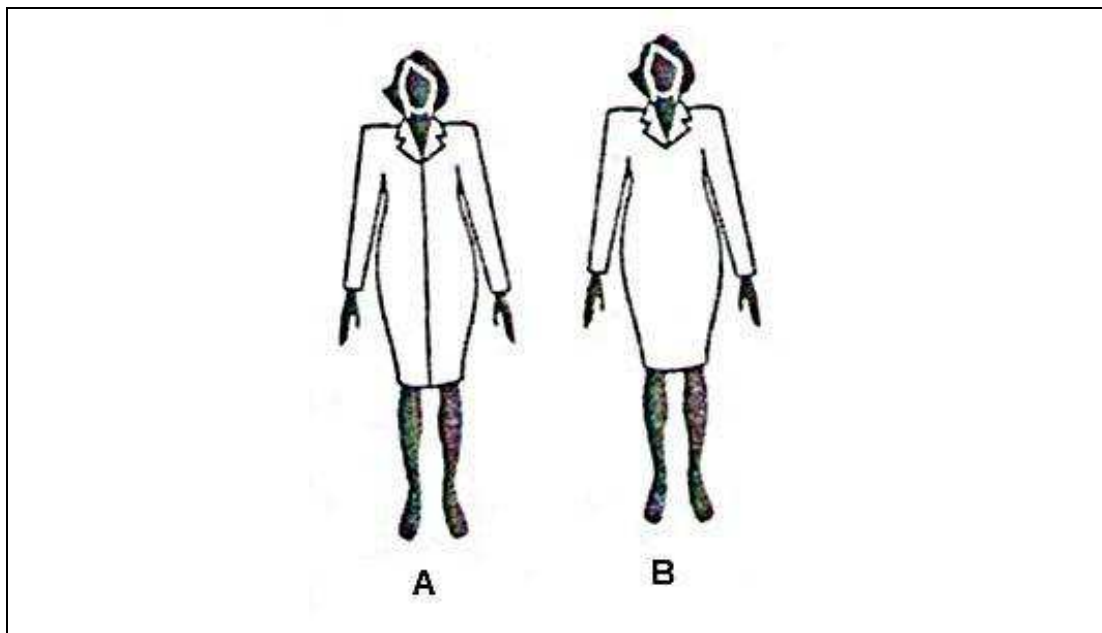
3.4.1 Identify the top that would be least suitable for a woman with wide shoulders and give a reason for your choice. (2)

3.4.2 Identify the top that would be most suitable for someone with a long neck and give a reason for your choice. (2)

3.4.3 Identify the focal point in Top A and give a reason for your answer. (2)

3.4.4 Identify the type of balance in Top A and give a reason for your answer. (2)

- 3.4.5 Identify the colour scheme in:
- 3.4.5.1 Top A (1)
- 3.4.5.2 Top B (1)
- 3.4.5.3 Top C (1)
- 3.4.6 3.4.6.1 Identify the main type of line in Top C. (1)
- 3.4.6.2 What effect is created with the use of this type of line? (1)
- 3.4.7 Identify the top that would be least suitable to wear to work and give reasons for your choice. (3)
- 3.4.8 Which top would be most suitable to wear to work and to an early evening cocktail party after work? Give reasons for your choice. (3)
- 3.5 Study the pictures below and answer the questions that follow.



- 3.5.1 Explain the words *optical illusion*. (1)
- 3.5.2 Mention TWO ways how an optical illusion is created by Dress A. (2)
- 3.5.3 Explain the optical illusion created by the neckline of the dresses. (2)
- 3.5.4 Identify the shape of the dresses. (1)
- 3.5.5 Suggest a colour for Dress A to create the illusion that the woman wearing the dress is slimmer. (1)

**TOTAL SECTION C: 40**

**SECTION D: HOUSING AND SOFT FURNISHINGS**

**QUESTION 4**

4.1 Why is a carpet underlay needed? Mention FOUR purposes. (4)

4.2 When you design homes you work with four types of plans. Name these FOUR types of plans. (4)

4.3 Which type of floor plan will be suitable for the handicapped? Give TWO reasons for your choice. (1 + 2) (3)

4.4 Cotton is most often used for making towels. Give FOUR reasons for using cotton. (4)

4.5 Compare the advantages and disadvantages using wool blankets. Tabulate your answer as follows:

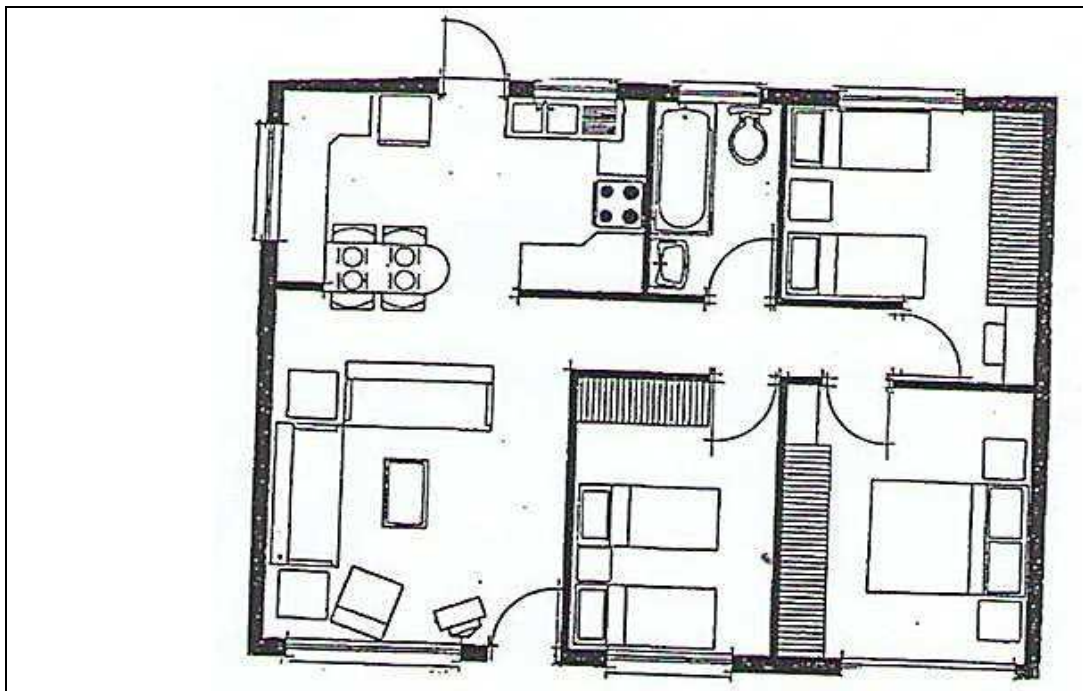
Advantages	Disadvantages
(2)	(3)

4.6 Explain how to care for wood furniture. (6)

4.7 Identify the finishes used on sheeting. Tabulate your answer as follows:

Type of finishes	Type of sheeting
(2)	(2)

4.8 Study the floor plan below and answer the questions that follow.



4.8.1 Give THREE activities that can take place in this house.

4.8.2 Identify the area for each activity. Tabulate your answer as follows:

4.8.1	Activity	4.8.2	Activity Area

(6)

4.9 Identify the type of balance that was obtained in the main bedroom. (2)

4.10 Explain how the balance in QUESTION 4.9 was obtained. (2)

**TOTAL SECTION D: 40**

**SECTION E: THEORY OF PRACTICAL OPTION**

Choose ONE option according to the component done at your school.

**QUESTION 5 : FOOD OPTION**

OR

**QUESTION 6 : CLOTHING OPTION**

OR

**QUESTION 7 : SOFT FURNISHING OPTION****QUESTION 5: FOOD OPTION**

5.1 Read the choux paste recipe below and answer the questions that follow.

INGREDIENTS	CHOUX METHOD
250 ml water 125 ml margarine	<b>Step 1:</b> Bring water and margarine to boil. Remove immediately from heat.
250 ml flour	<b>Step 2:</b> Add sifted flour all at once. Stir well over heat.
3 eggs	<b>Step 3:</b> Remove from heat and let it cool down. Add eggs gradually and stir well after every addition.
	<b>Step 4:</b> Scoop spoons full on a greased tin. <b>Step 5:</b> Bake at 200 – 220 °C for 10 – 15 min. Reduce the temperature to 160 – 180 °C for 20 – 30 min.

- 5.1.1 Explain why no lumps formation occurred in Step 2. (2)
- 5.1.2 Identify the main raising agent in choux paste. (2)
- 5.1.3 Analyse each of the following and predict the result of each step.
- (a) The immediate removal of water and margarine (2)
- (b) The cooling off of the mixture before adding the eggs in Step 3 (2)
- (c) The initial high baking temperature in Step 5 (1)
- (d) The reducing of the temperature in Step 5 (2)
- 5.1.4 Give FIVE characteristics of a successful baked puff. (5)
- 5.1.5 Under which circumstances will puffs not rise? (2)

- 5.2 Study the ingredient list for ten (10) mini cheese cakes and answer the questions that follow.

Mini Cheese Cakes	
70 g	Tennis biscuits
80 ml	Margarine
16 ml	Gelatine
80 ml	Castor Sugar
2	Eggs
160 ml	Cream
10 ml	Vanilla
250 ml	Cream Cheese
200 g	Fresh Strawberries

Use the table below to calculate the cost of 1 recipe.

CONVERSION TABLE	
Ingredients	Conversion per 250 ml
Tennis biscuits	100 g (crushed)
Margarine (Blossom)	230 g
Gelatine	150 g
Castor sugar	210 g
Eggs	2
Cream	240 g
Cream Cheese	190 g
Strawberries	160 g

Copy this table onto your folio paper:

Ingredients	Purchasing Unit	Cost	Quantity Used	Conversion ml to g/kg	Calculation Amounts used x Purchasing cost Purchasing Unit	Total
Tennis biscuits	200 g	R9,99	70 g			
Margarine	500 g	R13,49	80 ml			
Gelatine	50 g	R11,99	16 ml			
Castor Sugar	500 g	R7,99	80 ml			
Eggs	6 (large)	R6,69	2			
Cream	250 ml	R11,39	160 ml			
Vanilla	100 ml	R10,89	10 ml			
Cream Cheese	150 g	R15,99	250 ml			
Strawberries	500 g	R15,00	200 g			
					Cost of 1 recipe	

(26 ÷ 2) (13)



- 5.3.1 Calculate 40% (20% overheads and 20% profit) mark-up to cover overheads and make a profit. Show calculations. (3)
- 5.3.2 Calculate the selling price per portion. (2)
- 5.4 Name the information that must appear on the label for the mini-cheese cakes. (8 ÷ 2) (4)
- [40]**

**QUESTION 6: CLOTHING OPTION**

6.1 Name THREE different types of zips which can be used on clothing and give an example where it can be used.

Tabulate your answer as follow:

Type of Zip	Example
<ul style="list-style-type: none"> <li>•</li> <li>•</li> <li>•</li> </ul>	<ul style="list-style-type: none"> <li>•</li> <li>•</li> <li>•</li> </ul>

(3 + 3) (6)

6.2 Suggest TWO ways to work away fullness on clothing and explain each one.

(2 x 3) (6)

6.3 An interfacing is always used in a collar.

6.3.1 What is interfacing?

(2)

6.3.2 Give THREE reasons why interfacing must be used.

(3)

6.3.3 Name THREE types of material used to make interfacing.

(3)

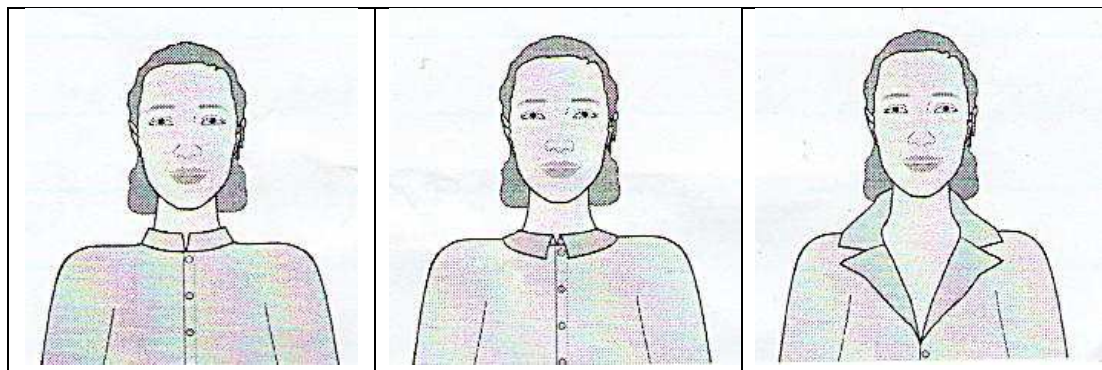
6.4 Suggest any THREE ways to decorate a garment and explain each way.

(3 x 2) (6)

6.5 Give the requirements needed for a seam of a garment.

(5)

6.6



(i)

(ii)

(iii)

6.6.1 Identify the different types of collars marked (i), (ii) and (iii).

(3 x 2) (6)

6.6.2 What will influence your choice of buttons for the blouses on the pictures?

(3)

**[40]**

**QUESTION 7: SOFT FURNISHING**

- 7.1 Suggest TWO ways to work away fullness on soft furnishing and explain each one. (2 x 3) (6)
- 7.2 7.2.1 Give THREE different window treatments. (3)
- 7.2.2 Explain the term, *Roman Blinds*. (2)
- 7.3 7.3.1 Explain the importance to line a curtain. (4)
- 7.3.2 Give TWO examples of lining that are commonly used. (2)
- 7.3.3 Flow chart.
- (a) The following making steps to make curtains are provided. Rearrange the steps in the correct order. (8)

**A**

Pull curtain wire through the top hem and hang it up.

**B**

Cotton  
Voile material  
Window Measurement

**C**

Scissors,  
measuring tape,  
pins, needles,  
sewing machine,  
iron,  
curtain wire.

**D**

- Measure and cut material to the correct length
- Fold a double 1 cm hem to the wrong side of material
- Pin, tack and stitch
- Fold 1 cm to the wrong side on the top and below and press.
- Fold another 5,5 cm at the top and below.
- Pin, tack and stitch
- Press curtains

- (b) Show which steps A to D are involved in the following production processes:
- (i) Input (1)
  - (ii) Process (1)
  - (iii) Output (1)
- 7.4.1 Discuss THREE important aspects of an upholstered chair to take into consideration when re-upholstering is done. (3 x 2) (6)
- 7.4.2 Give SIX factors that you must consider when choosing fabric for a chair. (6)

**TOTAL SECTION E: 40**

**GRAND TOTAL: 200**

ANSWER SHEET

NAME .....

NOVEMBER 2012

SECTION A

QUESTION 1.1

1.1.1	A	B	C	D	(1)
1.1.2	A	B	C	D	(1)
1.1.3	A	B	C	D	(1)
1.1.4	A	B	C	D	(1)
1.1.5	A	B	C	D	(1)
1.1.6	A	B	C	D	(1)
1.1.7	A	B	C	D	(1)
1.1.8	A	B	C	D	(1)
1.1.9	A	B	C	D	(1)
1.1.10	A	B	C	D	(1)
1.1.11	A	B	C	D	(1)
1.1.12	A	B	C	D	(1)
1.1.13	A	B	C	D	(2)
1.1.14	A	B	C	D	(3)
1.1.15	A	B	C	D	(2)
1.1.16	A	B	C	D	(2)
1.1.17	A	B	C	D	(1)
1.1.18	A	B	C	D	(3)

<b>25</b>

QUESTION 1.2

1.2.1	A	B	C	D	E	F	G	H
1.2.2	A	B	C	D	E	F	G	H
1.2.3	A	B	C	D	E	F	G	H
1.2.4	A	B	C	D	E	F	G	H
1.2.5	A	B	C	D	E	F	G	H
1.2.6	A	B	C	D	E	F	G	H

(6 x 1)    6

QUESTION 1.3

1.3.1	A	B	C	D	E	F	G
1.3.2	A	B	C	D	E	F	G
1.3.3	A	B	C	D	E	F	G
1.3.4	A	B	C	D	E	F	G

(4 x 1)    4

QUESTION 1.4

1.4.1	
1.4.2	
1.4.3	
1.4.4	
1.4.5	

(5 x 1)    5

<b>TOTAL</b>	
	<b>40</b>