



Sealed Bid Timber Auction

Instruction Form February 16, 2012

Bids will be awarded based on Total Sale Bid, providing all individual species bids equal or exceed the appraised value and all department requirements have been met.

1. To be eligible to bid at a St. Louis County Timber auction, a Bidder Application Form must be on file at the St. Louis County Land and Minerals Department, 320 West 2nd Street, Room 607, Duluth, MN 55802 at least **2 working days prior** to the auction. An application can be obtained at any Land and Minerals Department Office.
2. The timber will be sold to the highest bidder but for not less than the total appraised Tract Value. A bid value per unit must be indicated for each species listed. This bid value will be applied to each specie. Bid value per unit must meet or exceed the appraised bid value per unit. St. Louis County reserves the right to accept or reject any or all bids.
3. All bid forms must be received in the Land Commissioner's Office **by 4:30 PM on February 15th**. All bids must be on the official bid form.
4. A \$300 bid bond, i.e. personal check, payable to the **St. Louis County Auditor** is required and must be included with the bid form. One bid bond will cover all tract bids and will be returned if no contracts are awarded. For a successful bidder, the bid bond will be applied to the down payment on the first tract awarded.
5. Successful bidders will have **10 business days** to submit a check, payable to the County Auditor, for **15%** of the appraised tract value for each tract awarded. Failure to make any or all of these down payments on time will result in the forfeiture of the bid bond. Successful bidders will be notified by mail.
6. Should the successful bidder not submit the down payment on time, the sale may be awarded to the next highest bidder. In the case of tie bids, the successful bidder will be decided by the toss of a coin by a deputy Auditor.
7. St. Louis County has developed an Environmental Management System to assist it in meeting the Sustainable Forestry Initiative (SFI) standard and is certified to this standard.
8. Some of the tracts may have special requirements. The St. Louis County Land and Minerals Department offers sales of various sizes, species and products to meet the needs of a wide variety of purchasers. There are some sales offered on this auction that allow the purchaser to decide if they want to purchase the sale as offered, either all species scaled or in a mix of scaled and SOE species, or choose to have all the species sold as SOE. These are identified with the following sentence in the comments of each tract. "The purchaser has the option to purchase this sale as advertised or to purchase all species as Sold On Appraised Volume (SOAV)." Prospective bidders should get maps, cutting regulations, contract information and special regulations at the applicable Area Office.
9. Successful bidders of sales identified as having the option of SOAV, will be required to select which sale option when submitting the 15% down payment for the tract.

Name /Company Name

Signature

Address

City

State

Zipcode

Date

Name /Company Name

Signature



Sealed Bid Timber Auction Form

February 16, 2012

Tract 1	Appraised Sale Value		\$ 22,597.10
Species	Estimated Volume	Appraised Value per unit	Bid Value per unit [Must meet or exceed appraised value per unit]
Aspen pulpwood	1,045 cords	\$17.67	
Balsam fir pulpwood	130 cords	\$10.32	
Birch pulpwood	270 cords	\$5.04	
Red maple pulpwood	105 cords	\$2.97	
Jack pine pulp & bolts	15 cords	\$16.48	
Black spruce pulpwood	10 cords	\$17.41	
White spruce pulp & bolts	40 cords	\$17.41	
The purchaser has the option to purchase this sale as advertised or to purchase all species as Sold On Appraised Volume (SOAV) except the Balsam fir.			

Tract 2	Appraised Sale Value		\$ 11,263.10
Species	Estimated Volume	Appraised Value per unit	Bid Value per unit [Must meet or exceed appraised value per unit]
Aspen pulpwood	85 cords	\$17.67	
Balsam fir pulpwood	30 cords	\$10.32	
Birch pulpwood	10 cords	\$5.04	
Jack pine pulp & bolts	10 cords	\$16.48	
Black spruce pulpwood	510 cords	\$17.41	
White spruce pulp & bolts	10 cords	\$17.41	
Tamarack pulpwood	55 cords	\$3.33	
The purchaser has the option to purchase this sale as advertised or to purchase all species as Sold On Appraised Volume (SOAV).			

Tract 3	Appraised Sale Value		\$ 5,952.02
Species	Estimated Volume	Appraised Value per unit	Bid Value per unit [Must meet or exceed appraised value per unit]
Aspen pulpwood	5 cords	\$17.67	
Birch pulpwood	1 cord	\$5.04	
Black spruce pulpwood	317 cords	\$17.41	
Tamarack pulpwood	102 cords	\$3.33	

Name /Company Name

Signature

Tract 4	Appraised Sale Value		\$ 19,368.62
Species	Estimated Volume	Appraised Value per unit	Bid Value per unit [Must meet or exceed appraised value per unit]
Aspen pulpwood	144 cords	\$21.21	
Birch pulpwood	48 cords	\$6.05	
Jack pine pulp & bolts	224 cords	\$19.78	
Norway pine pulp & bolts	321 cords	\$35.90	
White spruce pulp & bolts	4 cords	\$17.34	

Tract 5	Appraised Sale Value		\$ 25,246.96
Species	Estimated Volume	Appraised Value per unit	Bid Value per unit [Must meet or exceed appraised value per unit]
Aspen pulpwood	1,018 cords	\$17.67	
Balsam fir pulpwood	64 cords	\$10.32	
Birch pulpwood	179 cords	\$5.04	
Red maple pulpwood	18 cords	\$2.97	
Jack pine pulp & bolts	112 cords	\$16.48	
Norway pine pulp & bolts	40 cords	\$29.92	
Black spruce pulpwood	84 cords	\$17.41	
White spruce pulp & bolts	58 cords	\$14.45	
Tamarack pulpwood	90 cords	\$3.33	

Tract 6	Appraised Sale Value		\$ 4,715.48
Species	Estimated Volume	Appraised Value per unit	Bid Value per unit [Must meet or exceed appraised value per unit]
Aspen pulpwood	205 tons	\$2.00	
Balsam fir pulpwood	510 tons	\$2.00	
Birch pulpwood	155 tons	\$2.00	
Norway pine pulp & bolts	28 cords	\$32.91	
Norway pine pulpwood	967 tons	\$2.00	
Black spruce pulpwood	5 tons	\$2.00	
White spruce pulpwood	55 tons	\$2.00	

Name /Company Name

Signature

Tract 7	Appraised Sale Value		\$ 20,499.60
Species	Estimated Volume	Appraised Value per unit	Bid Value per unit [Must meet or exceed appraised value per unit]
Ash pulpwood	5 cords	\$2.70	
Aspen pulpwood	1,215 cords	\$15.90	
Balsam fir pulpwood	20 cords	\$9.29	
Birch pulpwood	70 cords	\$4.54	
Red maple pulpwood	200 cords	\$2.67	
White spruce pulpwood	10 cords	\$13.00	
The purchaser has the option to purchase this sale as advertised or to purchase all species as Sold On Appraised Volume (SOAV).			

Tract 8	Appraised Sale Value		\$ 8,085.60
Species	Estimated Volume	Appraised Value per unit	Bid Value per unit [Must meet or exceed appraised value per unit]
Aspen pulpwood	265 cords	\$17.67	
Balsam fir pulpwood	130 cords	\$10.32	
Birch pulpwood	300 cords	\$5.04	
Red maple pulpwood	185 cords	\$2.97	
The purchaser has the option to purchase this sale as advertised or to purchase all species as Sold On Appraised Volume (SOAV).			

Tract 9	Appraised Sale Value		\$ 85.05
Species	Estimated Volume	Appraised Value per unit	Bid Value per unit [Must meet or exceed appraised value per unit]
Aspen pulpwood SOE	167 tons	\$.05	
Balsam fir pulpwood SOE	140 tons	\$.05	
Birch pulpwood SOE	34 tons	\$.05	
Jack pine pulpwood SOE	151 tons	\$.05	
Norway pine pulpwood SOE	1,131 tons	\$.05	
White pine pulpwood SOE	42 tons	\$.05	
Black spruce pulpwood SOE	4 tons	\$.05	
White spruce pulpwood SOE	32 tons	\$.05	

Name /Company Name

Signature

Tract 10	Appraised Sale Value		\$ 19,381.25
Species	Estimated Volume	Appraised Value per unit	Bid Value per unit [Must meet or exceed appraised value per unit]
Aspen pulpwood SOE	880 cords	\$17.67	
Balsam fir pulpwood SOE	175 cords	\$10.32	
Birch pulpwood SOE	5 cords	\$5.04	
Red maple pulpwood SOE	30 cords	\$2.97	
White pine pulpwood SOE	10 cords	\$21.63	
Black spruce pulpwood SOE	10 cords	\$14.45	
White spruce pulpwood SOE	105 cords	\$14.45	
Tamarack pulpwood SOE	10 cords	\$3.33	

Tract 11	Appraised Sale Value		\$ 5,473.20
Species	Estimated Volume	Appraised Value per unit	Bid Value per unit [Must meet or exceed appraised value per unit]
Ash pulpwood SOE	5 cords	\$2.40	
Aspen pulpwood SOE	75 cords	\$14.14	
Balsam fir pulpwood SOE	25 cords	\$8.26	
Basswood pulpwood SOE	1 cord	\$3.47	
Birch pulpwood SOE	25 cords	\$4.03	
Red maple pulpwood SOE	65 cords	\$2.37	
Jack pine pulpwood SOE	25 cords	\$13.19	
Norway pine pulp & bolts	50 cords	\$23.94	
White pine pulp & bolts	115 cords	\$17.31	
Black spruce pulpwood SOE	1 cord	\$13.93	
White spruce pulpwood SOE	35 cords	\$11.56	

Tract 12	Appraised Sale Value		\$ 9,491.95
Species	Estimated Volume	Appraised Value per unit	Bid Value per unit [Must meet or exceed appraised value per unit]
Aspen pulpwood	365 cords	\$17.67	
Balsam fir pulpwood	25 cords	\$10.32	
Birch pulpwood	60 cords	\$5.04	
Red maple pulpwood	20 cords	\$2.97	
Black spruce pulpwood	135 cords	\$17.41	
White spruce pulpwood	5 cords	\$14.45	
The purchaser has the option to purchase this sale as advertised or to purchase all species as Sold On Appraised Volume (SOAV).			

Name /Company Name

Signature

Tract 13	Appraised Sale Value		\$ 30,920.30
Species	Estimated Volume	Appraised Value per unit	Bid Value per unit [Must meet or exceed appraised value per unit]
Aspen pulpwood	6 cords	\$14.14	
Balm of gilead pulpwood	11 cords	\$14.14	
Norway pine pulp & bolts	1,212 cords	\$23.94	
White spruce pulp & bolts	144 cords	\$11.56	

Tract 14	Appraised Sale Value		\$ 4,823.75
Species	Estimated Volume	Appraised Value per unit	Bid Value per unit [Must meet or exceed appraised value per unit]
Ash pulpwood	55 cords	\$.55	
Aspen pulpwood	735 cords	\$4.40	
Balm of gilead pulpwood	35 cords	\$4.40	
Balsam fir pulpwood	85 cords	\$1.10	
Birch pulpwood	80 cords	\$.55	
Red maple pulpwood	85 cords	\$.55	
Red oak pulpwood	30 cords	\$.55	
Jack pine pulp & bolts	25 cords	\$1.92	
Norway pine pulp & bolts	125 cords	\$7.45	
Black spruce pulpwood	10 cords	\$4.40	
White spruce pulp & bolts	110 cords	\$1.65	
The purchaser has the option to purchase this sale as advertised or to purchase all species as Sold On Appraised Volume (SOAV) except Norway pine.			

Tract 15	Appraised Sale Value		\$ 19,685.80
Species	Estimated Volume	Appraised Value per unit	Bid Value per unit [Must meet or exceed appraised value per unit]
Aspen pulpwood	1,100 cords	\$11.66	
Balsam fir pulpwood	200 cords	\$6.81	
Birch pulpwood	825 cords	\$3.32	
Red maple pulpwood	365 cords	\$2.00	
Sugar maple pulpwood	64 cords	\$2.00	
Black spruce pulpwood	115 cords	\$10.92	
White spruce pulp & bolts	50 cords	\$10.92	
Tamarack pulpwood	45 cords	\$2.20	
The purchaser has the option to purchase this sale as advertised or to purchase all species as Sold On Appraised Volume (SOAV).			

Name /Company Name

Signature

Tract 16	Appraised Sale Value		\$ 25,601.60
Species	Estimated Volume	Appraised Value per unit	Bid Value per unit [Must meet or exceed appraised value per unit]
Aspen pulpwood SOE	1,090 cords	\$19.44	
Balm of gilead pulpwood SOE	5 cords	\$18.68	
Balsam fir pulpwood SOE	125 cords	\$11.35	
Birch pulpwood SOE	90 cords	\$5.54	
Black spruce pulpwood SOE	5 cords	\$19.15	
White spruce pulpwood SOE	145 cords	\$15.90	

Tract 17	Appraised Sale Value		\$ 3,334.40
Species	Estimated Volume	Appraised Value per unit	Bid Value per unit [Must meet or exceed appraised value per unit]
Aspen pulp & bolts	145 cords	\$17.67	
Balm of gilead pulpwood	4 cords	\$16.98	
Balsam fir pulpwood	5 cords	\$10.32	
Birch pulpwood SOE	46 cords	\$5.04	
Elm pulpwood SOE	1 cord	\$2.97	
Red maple pulpwood SOE	17 cords	\$2.97	
Sugar maple pulpwood SOE	23 cords	\$3.41	
White spruce pulp & bolts	20 cords	\$14.45	

Tract 18	Appraised Sale Value		\$ 18,292.95
Species	Estimated Volume	Appraised Value per unit	Bid Value per unit [Must meet or exceed appraised value per unit]
Aspen pulp & bolts	5 cords	\$17.67	
Balsam fir pulp & bolts	5 cords	\$10.32	
Norway pine pulp & bolts	812 cords	\$22.00	
White spruce pulp & bolts	20 cords	\$14.45	

Name /Company Name

Signature

Tract 19	Appraised Sale Value		\$ 17,444.53
Species	Estimated Volume	Appraised Value per unit	Bid Value per unit [Must meet or exceed appraised value per unit]
Aspen pulp & bolts	252 cords	\$17.67	
Balm of gilead pulpwood	7 cords	\$16.98	
Balsam fir pulpwood	204 cords	\$10.32	
Birch pulpwood SOE	38 cords	\$5.04	
Red maple pulpwood SOE	24 cords	\$2.97	
Sugar maple pulpwood SOE	9 cords	\$3.41	
Black spruce pulp & bolts	578 cords	\$17.41	
White spruce pulp & bolts	19 cords	\$14.45	
Tamarack pulpwood	41 cords	\$3.33	
The purchaser has the option to purchase this sale as advertised or to purchase all species as Sold On Appraised Volume (SOAV).			

Tract 20	Appraised Sale Value		\$ 5,239.70
Species	Estimated Volume	Appraised Value per unit	Bid Value per unit [Must meet or exceed appraised value per unit]
Ash pulp & bolts	120 cords	\$3.00	
Aspen pulpwood	110 cords	\$17.67	
Balm of gilead pulpwood	5 cords	\$16.98	
Basswood pulpwood	210 cords	\$4.34	
Birch pulpwood	90 cords	\$5.04	
Yellow birch pulpwood	5 cords	\$5.04	
Elm pulpwood	5 cords	\$3.00	
Red maple pulpwood	195 cords	\$2.97	
Sugar maple pulpwood	175 cords	\$3.41	
Burr oak pulp & bolts	45 cords	\$6.00	

Tract 21	Appraised Sale Value		\$ 104,903.66
Species	Estimated Volume	Appraised Value per unit	Bid Value per unit [Must meet or exceed appraised value per unit]
Aspen pulpwood SOE	4,574 cords	\$21.21	
Balm of gilead pulpwood SOE	10 cords	\$20.38	
Balsam fir pulpwood SOE	83 cords	\$12.38	
Birch pulpwood SOE	473 cords	\$6.05	
Red maple pulpwood SOE	193 cords	\$3.56	
Sugar maple pulpwood SOE	315 cords	\$4.09	
White spruce pulpwood SOE	105 cords	\$17.34	

Name /Company Name

Signature

Tract 22	Appraised Sale Value		\$ 2,800.00
Species	Estimated Volume	Appraised Value per unit	Bid Value per unit [Must meet or exceed appraised value per unit]
Aspen pulpwood	205 tons	\$2.00	
Balsam fir pulpwood	380 tons	\$2.00	
Birch pulpwood	35 tons	\$2.00	
White spruce pulpwood	780 tons	\$2.00	
The purchaser has the option to purchase this sale as advertised or to purchase all species as Sold On Appraised Volume (SOAV).			

Tract 23	Appraised Sale Value		\$ 8,076.10
Species	Estimated Volume	Appraised Value per unit	Bid Value per unit [Must meet or exceed appraised value per unit]
Ash pulpwood SOE	15 cords	\$3.00	
Aspen pulpwood	285 cords	\$17.67	
Balm of gilead pulpwood	20 cords	\$16.98	
Balsam fir pulpwood	145 cords	\$10.32	
Birch pulpwood SOE	130 cords	\$5.04	
Red maple pulpwood SOE	40 cords	\$2.97	
Sugar maple pulpwood SOE	10 cords	\$2.39	
White spruce pulp & bolts	25 cords	\$14.45	

Tract 24	Appraised Sale Value		\$ 92,495.50
Species	Estimated Volume	Appraised Value per unit	Bid Value per unit [Must meet or exceed appraised value per unit]
Aspen pulpwood SOE	2,680 cords	\$19.44	
Balm of gilead pulpwood SOE	80 cords	\$18.68	
Balsam fir pulpwood	1,335 cords	\$11.35	
Birch pulpwood SOE	1,685 cords	\$5.54	
Red maple pulpwood SOE	530 cords	\$3.51	
Sugar maple pulpwood SOE	580 cords	\$3.51	
Jack pine pulpwood	55 cords	\$18.13	
Black spruce pulpwood	190 cords	\$19.15	
White spruce pulp & bolts	370 cords	\$15.90	
The purchaser has the option to purchase this sale as advertised or to purchase all species as Sold On Appraised Volume (SOAV).			

Name /Company Name

Signature

Tract 25	Appraised Sale Value		\$ 12,931.05
Species	Estimated Volume	Appraised Value per unit	Bid Value per unit [Must meet or exceed appraised value per unit]
Aspen pulpwood	505 cords	\$19.44	
Balsam fir pulpwood	180 cords	\$11.35	
Birch pulpwood SOE	2 cords	\$5.54	
Red maple pulpwood SOE	2 cords	\$3.26	
Black spruce pulpwood	55 cords	\$19.15	

Tract 26	Appraised Sale Value		\$ 8,475.35
Species	Estimated Volume	Appraised Value per unit	Bid Value per unit [Must meet or exceed appraised value per unit]
Balsam fir pulpwood	285 cords	\$11.35	
Birch pulpwood SOE	670 cords	\$5.54	
Red maple pulpwood SOE	30 cords	\$3.26	
White spruce pulp & bolts	90 cords	\$15.90	

Tract 27	Appraised Sale Value		\$ 23,303.15
Species	Estimated Volume	Appraised Value per unit	Bid Value per unit [Must meet or exceed appraised value per unit]
Aspen pulp & bolts	510 cords	\$19.44	
Balsam fir pulp & bolts	395 cords	\$11.35	
Birch pulpwood SOE	390 cords	\$5.54	
Red maple pulpwood SOE	15 cords	\$3.26	
Black spruce pulp & bolts	30 cords	\$19.15	
White spruce pulp & bolts	385 cords	\$15.90	

Name /Company Name

Signature

Tract 28	Appraised Sale Value		\$ 38,667.80
Species	Estimated Volume	Appraised Value per unit	Bid Value per unit [Must meet or exceed appraised value per unit]
Ash pulpwood SOE	70 cords	\$3.60	
Aspen pulpwood	415 cords	\$21.21	
Balm of gilead pulpwood	95 cords	\$20.38	
Balsam fir pulpwood	695 cords	\$12.38	
Birch pulpwood SOE	1,380 cords	\$6.05	
Red maple pulpwood SOE	80 cords	\$3.57	
Black spruce pulpwood	425 cords	\$20.89	
White spruce pulp & bolts	90 cords	\$17.34	
The purchaser has the option to purchase this sale as advertised or to purchase all species as Sold On Appraised Volume (SOAV).			

Tract 29	Appraised Sale Value		\$ 28,838.45
Species	Estimated Volume	Appraised Value per unit	Bid Value per unit [Must meet or exceed appraised value per unit]
Aspen pulpwood	900 cords	\$19.44	
Balm of gilead pulpwood	40 cords	\$18.86	
Balsam fir pulpwood	450 cords	\$11.35	
Basswood pulpwood SOE	75 cords	\$4.78	
Birch pulpwood SOE	490 cords	\$5.54	
Red maple pulpwood SOE	170 cords	\$3.26	
Sugar maple pulpwood SOE	155 cords	\$3.75	
White spruce pulpwood	80 cords	\$15.90	

Tract 30	Appraised Sale Value		\$ 4,416.78
Species	Estimated Volume	Appraised Value per unit	Bid Value per unit [Must meet or exceed appraised value per unit]
Ash pulpwood SOE	100 cords	\$2.70	
Aspen pulpwood SOE	55 cords	\$15.90	
Balm of gielad pulpwood SOE	55 cords	\$15.28	
Balsam fir pulpwood	35 cords	\$9.29	
Basswood pulp & bolts	242 cords	\$3.91	
Birch pulpwood SOE	111 cords	\$4.54	
Elm pulpwood	1 cord	\$3.07	
Red maple pulpwood	14 cords	\$2.67	
Sugar maple pulpwood	116 cords	\$3.07	
White spruce pulp & bolts	20 cords	\$13.00	

Name /Company Name

Signature

Tract 31	Appraised Sale Value		\$ 8,369.75
Species	Estimated Volume	Appraised Value per unit	Bid Value per unit [Must meet or exceed appraised value per unit]
Aspen pulpwood	335 cords	\$17.67	
Balsam fir pulpwood	25 cords	\$10.32	
Basswood pulpwood	100 cords	\$4.34	
Birch pulpwood	195 cords	\$5.04	
Red maple pulpwood	20 cords	\$2.97	
Sugar maple pulpwood	210 cords	\$3.41	

Tract 32	Appraised Sale Value		\$ 61,036.75
Species	Estimated Volume	Appraised Value per unit	Bid Value per unit [Must meet or exceed appraised value per unit]
Aspen pulpwood	2,370 cords	\$21.21	
Balm of gilead pulpwood	70 cords	\$20.38	
Balsam fir pulpwood	320 cords	\$12.38	
Basswood pulpwood SOE	105 cords	\$5.21	
Birch pulpwood SOE	240 cords	\$6.05	
Red maple pulpwood SOE	185 cords	\$3.56	
Black spruce pulpwood	10 cords	\$20.89	
White spruce pulpwood	145 cords	\$17.34	
The purchaser has the option to purchase this sale as advertised or to purchase all species as Sold On Appraised Volume (SOAV).			

Tract 33	Appraised Sale Value		\$ 7,022.05
Species	Estimated Volume	Appraised Value per unit	Bid Value per unit [Must meet or exceed appraised value per unit]
Aspen pulpwood	310 cords	\$15.90	
Balsam fir pulpwood	155 cords	\$9.29	
Birch pulpwood SOE	15 cords	\$4.54	
White spruce pulpwood	45 cords	\$13.00	

Name /Company Name

Signature

Tract 34

Appraised Sale Value

\$ 3,077.85

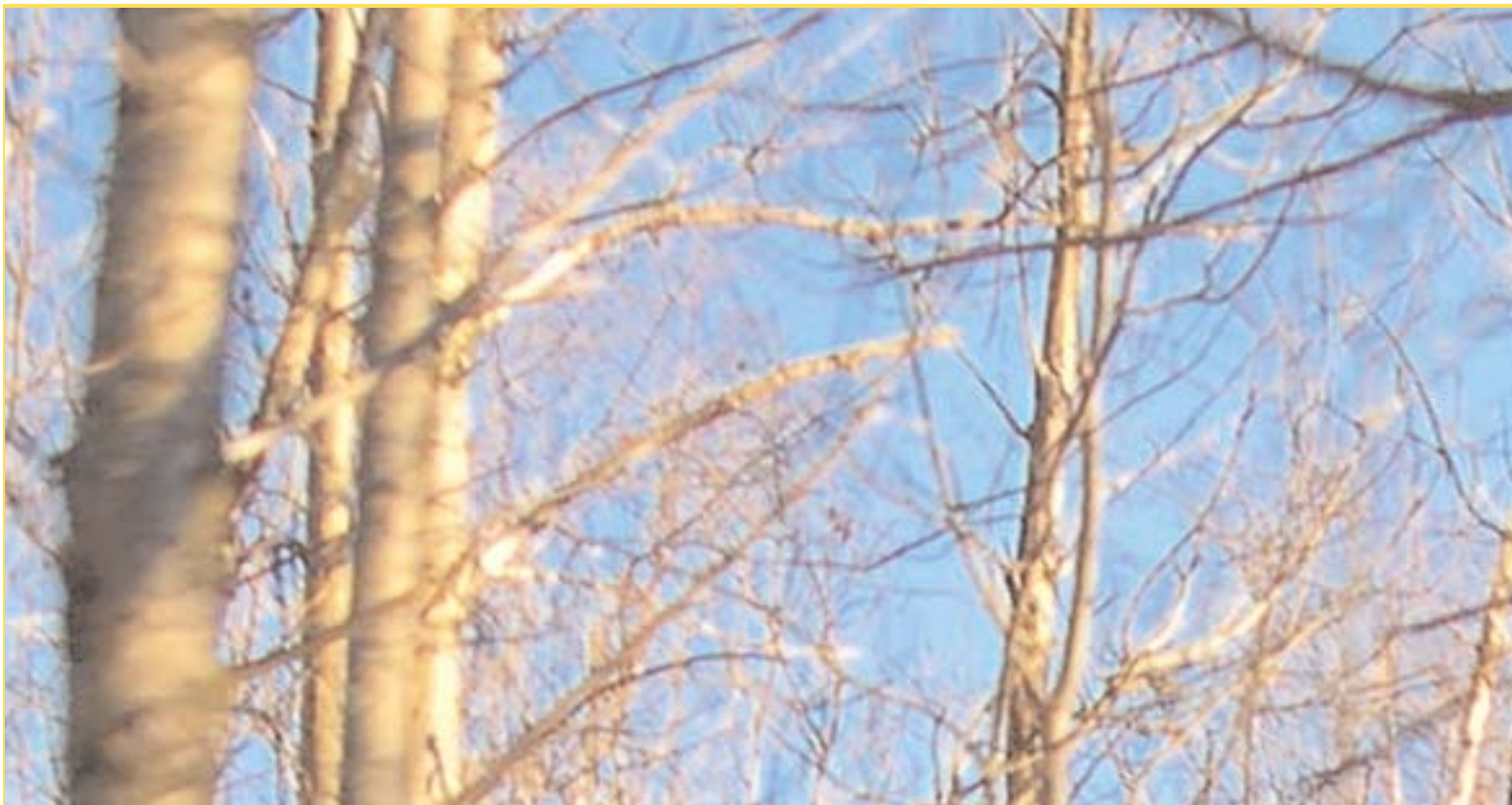
Species	Estimated Volume	Appraised Value per unit	Bid Value per unit [Must meet or exceed appraised value per unit]
Aspen pulp & bolts	82 cords	\$15.90	
Balm of gilead pulpwood	1 cord	\$15.28	
Balsam fir pulpwood	21 cords	\$9.29	
Birch pulpwood SOE	13 cords	\$4.54	
Red maple pulpwood SOE	2 cords	\$2.67	
Jack pine pulp & bolts	21 cords	\$14.83	
Norway pine pulp & bolts	28 cords	\$26.93	
White pine pulp & bolts	1 cord	\$19.47	
Black spruce pulp & bolts	14 cords	\$15.67	
White spruce pulp & bolts	15 cords	\$13.00	

The purchaser has the option to purchase this sale as advertised or to purchase all species as Sold On Appraised Volume (SOAV).



Name /Company Name

Signature



“Trust Lands, Managed for the People of this County”



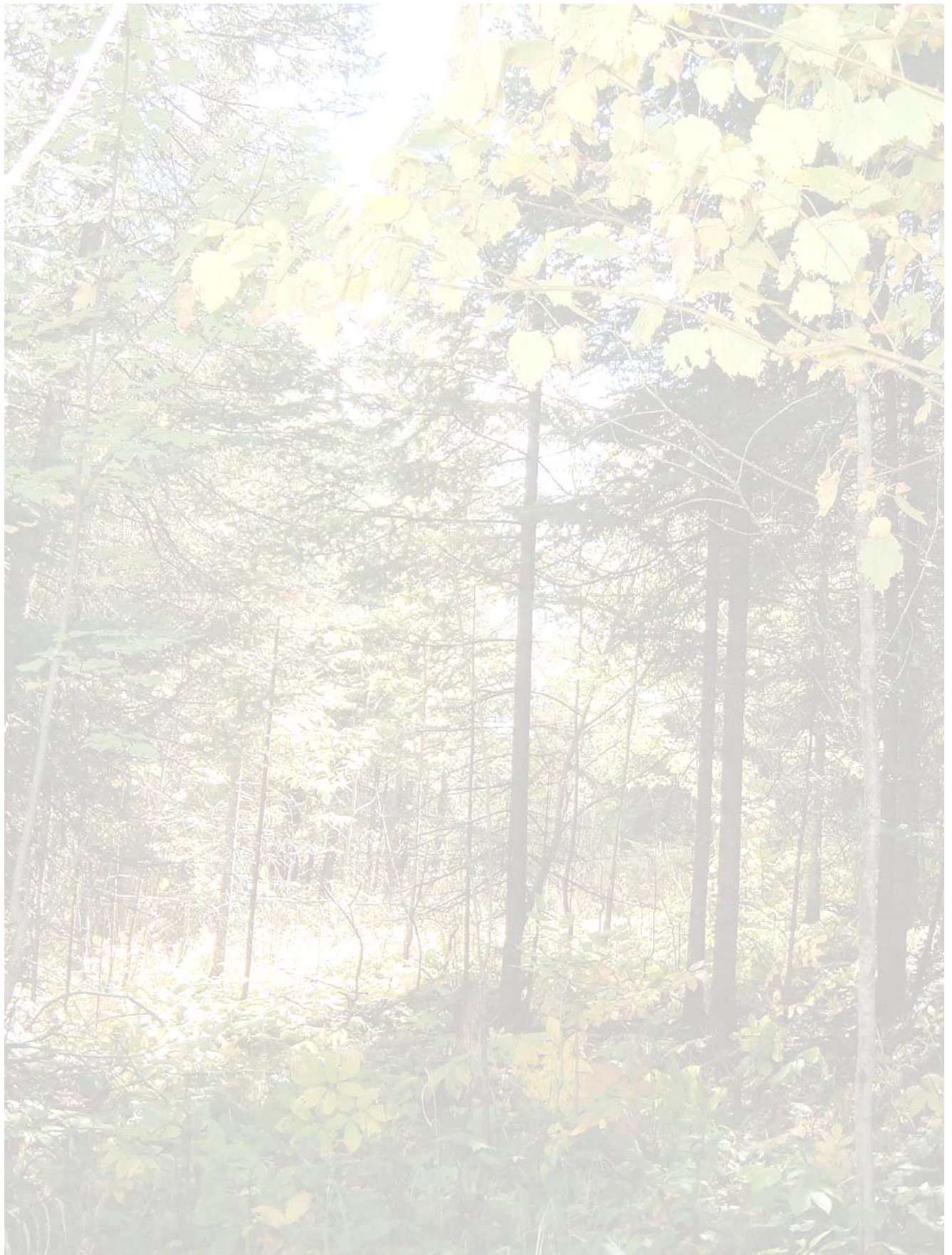
The St. Louis County Land and Minerals Department is committed to managing tax forfeited lands by establishing practical resource management programs based on responsible stewardship and sustainability.



**Best Management Standards for
Field Operations: revised May 2011**

**Request CAB Cards
from your
Sale Administrator
TODAY!**





Name /Company Name

Signature

Secure with tape here

Secure with tape here



Fold down this side second



320 W 2nd Street, Room 607
Duluth, MN 55802

Post Office
will not deliver
without postage

St. Louis County Land and Minerals Department
Government Services Building
320 W. 2nd Street, Room 607
Duluth, MN 55802

Sealed Bid Timber Auction - February 16th
Bids Due by 4:30 pm February 15th
Attn: Sharyl

Fold here first

