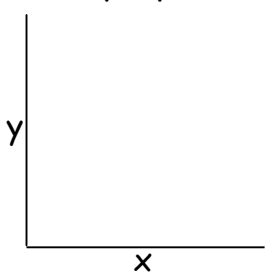


Fill in the graphs and blanks in this box before viewing the tape again.

Inverse proportion:

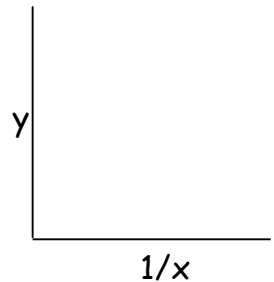


Graph of "y vs x" is a _____.

Graph of "y vs 1/x" is a _____.

_____ \propto _____

equation form: _____ = _____



Using Equations to show how variables are related:

Use numbers to find out how

P and F are related in the equation:

$$F = P A$$

Use numbers to find out how

P and A are related in the equation :

$$F = P A$$

P and F are _____ proportional.

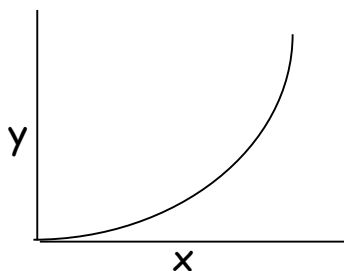
P and F are _____ proportional.

When equation is on one line (like "P A = F"), variables on the:

- same side of the = sign are _____ proportional.
- opposite sides of the = sign are _____ proportional

Real-Life Example of "P A = F":

Would you rather have an elephant or a woman in spike heels walk on your marble floor? Explain, using the equation.



This graph shows that y is directly proportional to x in some form because as y increases, x _____. The graph describes an _____ relationship.

Scientists keep manipulating data (like graphing y vs _____) until they get a _____ line. Then they can write an _____ for the relationship.

SHOW WHAT YOU KNOW: (on back.)