



NSU Criminal Justice News



Volume 1 – Issue 2 October 2005
© 2005 Northwestern State University

A publication from the NSU Criminal Justice Program

THE POLICE BEAT Cops Are Different



The Badge

by Associate Professor Joe Morris

Even though the badge may weigh 2 – 4 ounces, when pinned on, there is a weight unknown to most law enforcement officers. The true weight of the badge requires a strength and conditioning for which few officers are trained. The badge is not just pinned on a chest; it is pinned on a lifestyle. The heaviness of the badge makes the law enforcement officer different from other professionals. Ten areas have been identified which make the badge heavy and law enforcement officers different. (Paraphrased from *The Heavy Badge*, Vol 1, No. 1)

10 REASONS LAW ENFORCEMENT OFFICERS ARE DIFFERENT

And how these differences impact on their stress!

Reasons 1 through 5

- 1) Law enforcement officers are seen as authority figures. People deal with them differently and treat them differently, even when they are not working. When a problem occurs, everyone looks to the officer to "take charge," to "solve the problem." Some say the cop is never off duty. Even when the officer is not working there is a tendency to attack problems and take charge. Sometimes taking charge is not preferable, and can cause particular strains in our world where many people like to linger with problems, never really solving anything. Recognizing the difference between a "problem solving" situation, where action is desirable, and a more passive situation, where action may alienate others, is difficult for the cop.
- 2) They are isolated. The wearing of a badge, uniform and gun makes a law officer separate from society. This segregation leads to many psychological effects which research shows can create negative personality traits. For example, psychological research shows the wearing of a

uniform will tend to make any person de-humanize people who are without a uniform. Just wearing a badge or a gun can cause people to act more aggressively. These are changes that could happen to anyone wearing a uniform, badge and gun, thus these factors are expected to operate in some way on the police officer. Many officers suggest there is a "role," or "mask" which they put on along with their uniform. Sometimes this role leaks into their personal lives and changes the course of their relationships and leisure time.

3. Law enforcement officers work in a quasi-military, structured institution. There are mental health concerns associated with working within a "quasi-military structure" and other mental health concerns of working in an "institution." Military organizations require the sacrifice of the individual for the good of society. The "individual" is not a consideration; the "goal of the group is paramount. In a military organization, the focus is on punishing the individual if he is not up to standards. It is a de-humanizing process to recognize that you are only valued as a part of a machine. The "institution" takes the same attitude, only a step further. In an institution, you are locked in a set process and the process is more important many times than, not only the individual, but also the goal. When an officer does a remarkable job of police work, perhaps even saves a life, he can still be reprimanded if he doesn't file the proper paperwork. The paperwork describing an action in many cases is more important to the institution than the action itself. Both the quasi-military nature of police work and the functioning within an institution combine for mental health situation that is quite undesirable and very stressful.
4. The "rotating shift" schedule is very taxing on an officer's life. Our bodies are adjusted on what is called "circadian schedules" which is a repetitive daily cycle. Our bodies like to have a regular eating time, sleeping time, waking time, etc. An officer doing shift work never gets a chance to

stay on a schedule. This upsets his physical and mental balance in life. The changing work schedule also upsets the routine patterns that are needed in healthy marriage and family development. Strong marital and family development is based on rituals, like dinners together, "inside jokes," repeated activities, etc. The rotating shift worker has less chance to develop these rituals and his relationships suffer. This predisposes the officer's family to potential problems ranging from divorces, to children acting-out.

5. The law enforcement job nurtures a sense of teamwork and unity with co-workers, what was once called "esprit de corps." The fraternity helps the officer on the job feel secure about getting the needed support in dangerous situations. It also stimulates a sense of belonging that can create an "us and them" view of the world. This makes the law enforcement "clique" harder to leave when retiring and makes officers more protective of each other. It also makes it more difficult to accept someone within the fraternal organization leaving or being killed. This adds to the stress of an officer.

Other reasons will be printed in subsequent issues of the *NSU Criminal Justice News*.

Reprinted from URL <http://www.heavybadge.com>

THE COURTHOUSE

Who Is The Newest Chief Justice of The Supreme Court?



By Assistant Professor Shirley Snyder

Who is John Glover Roberts, Jr.? Those with any interest in the future direction of the highest court in our nation watched Roberts respond to questions asked during confirmation hearings before the Senate, a forum used to identify the strengths and weaknesses of candidates for the high office of Supreme Court justice.

Would this nominee be an evenhanded and judicious contender for the powerful position at the summit of the United States Court System? At the end of the confirmation hearings and after Roberts' confirmation, the public still doesn't know. Roberts' answers often provided little substance of his character or his legal viewpoints and principles. Randy E. Barnett, law professor at Boston University and legal theorist on

constitutional law and theory [1], said of Roberts, "In his distinguished career, he has somehow managed not to give a speech or write an article that reveals the core of his judicial philosophy. As a result, we simply have no idea what to expect from him." [2]

How do we determine the fabric of the Robert's character, the substance of his attitudes and beliefs, and the tradition in which he will serve? We know only that he can present cautiously prudent responses filled with the same impenetrability that we have grown complacent with in our political leaders. Those of us who like clarity and who have no idea where he stands at the end of the day, would have appreciated better from this man. Straightforward answers and forthright replies would have been respected from the individual given the power to interpret the nuances of the document that shields and guards the citizenry of this great nation. So, why, one asks, were clear answers not given? Is it the nature of the law to be confusing? Did Roberts respond as he was coached? Did he fear that the tough answers would have compromised his opportunity for this Court?

On Thursday, September 29, 2005, John Glover Roberts, Jr. was confirmed as Chief Justice of the United States Supreme Court, by a vote of 78-22 by the full Senate. [3] Roberts' confirmation was assured. The votes were there on the side of the Republicans and enough Democrats could defend the decision to vote his confirmation as well. So, where are we at this point with this new appointee of the President confirmed by our Senate? As citizens and individuals who are interested, we can study Robert's prior legal decisions during the short time he served in the judiciary but the list is not extensive from which we can generate an accurate understanding of his historical views on constitutional issues. [4] We can read articles written by those who are studying him now. The bottom line is that Roberts has been confirmed to serve as Chief Justice and serve he will for as long as he desires or lives, weighing in on cases of enormous importance. We must wait to discover his judicial design. At that point, what Roberts felt compelled not to disclose during his confirmation hearings will become apparent.

In the meantime, a second nomination by President Bush to fill the vacancy made by departing Supreme Court Justice Sandra Day O'Connor promises to provide a much livelier discourse in those confirmation hearings. The threat to the current structure of the high Court is that this replacement for the vacancy left by centrist O'Connor will finally swing the already conservative structure of the Court firmly to the extreme right, a position feared by due process proponents throughout the country. This move to a more conservative stance by the Court has the potential to abandon legal precedent and to overturn cases previously protecting liberty and privacy interests of the individual over the

rights of the government to control and restrict those interests.

At his confirmation ceremony, Chief Justice Roberts said, "I'll try to ensure, in the discharge of my responsibilities, that, with the help of my colleagues, I can pass on to my children's generation a charter of self government as strong and as vibrant as the one that Chief Justice Rehnquist passed on to us". [5] We, the American public, must wait to determine exactly what that means to the new Chief Justice.

Sources

- [1] "Randy Barnett." *Wikipedia, the free encyclopedia*. Page 1.
http://en.wikipedia.org/wiki/Randy_Barnett.
- [2] "John Roberts Supreme Court nomination and hearings." *Wikipedia, the free encyclopedia*. Page 7.
http://en.wikipedia.org/wiki/John_Roberts_Supreme_Court_nomination_and_hearings.
- [3] "John Roberts Supreme Court nomination and hearings." *Wikipedia, the free encyclopedia*. Page 1.
http://en.wikipedia.org/wiki/John_Roberts_Supreme_Court_nomination_and_hearings.
- [4] "John Roberts Supreme Court nomination and hearings." *Wikipedia, the free encyclopedia*. Page 7.
http://en.wikipedia.org/wiki/John_Roberts_Supreme_Court_nomination_and_hearings.
- [5] "Roberts Sworn in as Chief Justice". CNN.com. (Bill Mears of CNN's Washington Bureau contributed to this report.) Page 1.
<http://www.cnn.com/2005/POLITICS/09/29/roberts.nomination/>

THE SLAMMER

Position Statement from the National Commission on Correctional Health Care



Health Services to Adolescents in Adult Correctional Facilities - Background

By Assistant Professor Thomas J. Tiefenwerth

Judicial and correctional authorities have always been challenged with the problem of adolescents committing crimes. Bolstered by changing public attitudes toward

adolescents accused of acts of violent crime (i.e., murder, rape, drug offenses, robbery, and aggravated assault), states are lowering the adult age limit that

allows adolescents to be tried and sentenced in adult criminal court. The rise in the number of violent crimes committed by adolescents, political pressures, and community reaction have resulted in increased placement of adolescents in adult correctional facilities.

Incarcerating adolescents in adult correctional facilities jeopardizes the long-standing paradigm of protecting the innocence of youth by incarcerating them separately from adults, maintaining their confidentiality, providing them with specialized community-based services, and ensuring that they participate in an individualized justice system. Furthermore, incarcerating adolescents in adult correctional facilities ignores the fact that the growth and developmental changes that occur in adolescence are substantially different from those that occur in adults.

Adolescence is a period of rapid physical, nutritional, cognitive, and social growth and development. These changes are influenced by a variety of factors including genetic, nutritional, environmental, family, and social experiences. Adolescents are at an increased risk for developing depressive symptoms and anxiety symptoms. Associated with this can be an increased risk for self-mutilating behavior, suicide attempts (National Coalition of State Juvenile Justice Advisory Groups, 1993), psychotic symptoms, and aggressive behaviors toward others. Confinement in any correctional facility can have a major impact on the ultimate outcome on this developmental process. Adult facilities are not able to deal with these and other needs of adolescents, and rarely are staff in adult facilities trained or prepared to work with the problems unique to adolescents.

Juveniles in adult facilities are five times more likely to be sexually assaulted, twice as likely to be beaten by staff, and 50 percent more likely to be attacked with a weapon than adolescents in a juvenile facility (Forst, Fagan, & Scott, 1989). The same studies also indicate a much lower rating of counseling programs' efforts to improve family relations and medical care in adult facilities. Given these facts, it is imperative that correctional programs caring for adolescents be designed specifically to meet their needs.

Position Statement

The National Commission on Correctional Health Care believes the incarceration of adolescents in adult correctional facilities is detrimental to the health and developmental well-being of youth. The Commission realizes, nevertheless, that jurisdictions will adjudicate youths as adults and incarcerate them in institutions for

adults. Therefore, due to the unique health service needs presented by adolescents in adult correctional facilities, the Commission recommends the following:

Recommendations

Adolescent health specialists, including medical and mental health professionals, familiar with correctional health care should be consulted in the development of correctional policies and procedures dealing with adolescent inmates.

Correctional and health staff who are responsible for the supervision and treatment of adolescents should receive orientation and on-going training regarding the unique health, developmental and educational needs of youth. Facilities housing adolescents should recognize their vulnerability in an adult setting. Adolescents should be separated and provided opportunities for appropriate peer interaction.

There should be a mechanism for referral to adolescent medical and mental health specialists.

The Commission advises that the specific developmental and growth needs of an adolescent population be addressed in a special needs treatment planning process for inmates as described in the NCCHC jail and prison standards on Special Needs Treatment Plans.

Adolescent prisoners should receive health care and health education in accordance with the American Medical Association's Guidelines for Adolescent Preventive Services (GAPS). The NCCHC document, Standards for Health Services in Juvenile Detention and Confinement Facilities, provides guidelines that also will be of assistance in this regard.

Adopted by the National Commission on Correctional Health Care Board of Directors: May 17, 1998

References

American Medical Association. (1993). Guidelines for adolescent preventive services (GAPS). Chicago, IL: Author.

Forst, J., Fagan, J., & Scott, B. T. (1989). Youth in prison and training schools: Perceptions and consequences of the treatment-custody dichotomy. *Juvenile and Family Court Journal*, 40, 1-4.

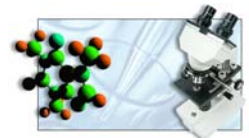
National Coalition of State Juvenile Justice Advisory Groups. (1993). Myths and realities: Meeting the challenge of serious, violent, and chronic juvenile offenders (1992 Annual Report). Washington, DC: Author.

Office of Juvenile Justice and Delinquency Prevention. (1997). *Juvenile justice reform initiatives in the states: 1994-1996*. Washington, DC: Author.

Roush, D. W. (1996). *Desktop Guide to good juvenile detention practice*. Washington, DC: Office of Juvenile Justice and Delinquency Prevention.

United States Preventive Services Task Force. (1989). *Guide to clinical preventive services*. Baltimore: Williams & Wilkins.

THE FORENSIC FILES

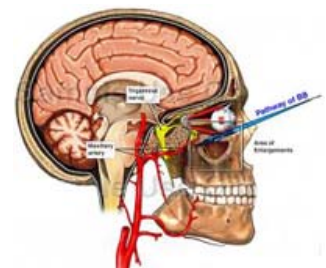


You'll Shoot Your Eye Out

by Assistant Professor David Hough

Yes, your mother was right! That BB-Gun will probably do some surprising damage to the human orbit or worse. Every year, BB-Guns and other air-powered guns do ocular damage and serious bodily injury, including death. Statistics from the CPSC (Consumer Product Safety Commission) reports such accidental deaths. Most of these incidents of death and serious bodily injuries are accidents. The problems with these guns are on several levels:

1. These guns are treated as "toys." Every 10-12 year old gets one of these guns for Christmas, birthdays, other holidays, etc. The parents, yes, I said the "P" word, should become familiar with the power and trajectory of these gifts. But, as some of my co-professors would say, "cultural transmission" takes over and my dad gave me a BB-gun, etc.
2. The ballistics information on these toys is serious. Most parents do not know the power of these "toys," until it is too late. The velocity of these "toys" can range from 250 fps (feet per second) to 1200 fps. Such velocities are enough for penetration of the chest cavity, not to mention that soft tissue area known as the "eye." The most pressing concern is what is beyond the eye or orbit, which most anatomy students will tell you, is the "brain."



3. Historically, air weapons (rifles) have been used since the 16th century in warfare and to kill game, including deer. The CPSC estimates that

there are approximately 3.2 million non-powder guns sold yearly.

Many children that become victims of air-gun injuries are unsupervised, usually with a friend, and probably not at home. The regulation of air-guns are found in New York and Florida, as well as

28 other states. However, as a former law enforcement official, I am somewhat dubious as to the actual enforcement, or officials taking the time to explain to the parents the down-side of these guns. I do take heart that maybe those mothers can convince their local jurisdictions to consider the BB-gun problem, or maybe get the word out to all parents that such guns are not toys. Next time you watch "A Christmas Story," and you hear Darren McGavin tell his son; "You'll Shoot Your Eye Out," maybe you will think of this BB-gun story, and just maybe when you buy your son an air rifle, you will take appropriate precautions and "Keep Your Eyes Out" for his safety.

Bibliography

DiMaio, Vincent J.M., *Gunshot Wounds*, 2nd Edition, CRC Press, New York, NY, (1999).

Laraque, Danielle, *Injury Risk of Non-Powder Guns*, PEDIATRICS Vol. 114, No. 5, November 2004, pp 1357-1361.

THE GRAB BAG

Criminal Behavior and Biology

By Assistant Professor Bill Shaw

Recently we have been reminded that we are what we are because of our genetic constitution. Studies have indicated that much of our behavior is hard-wired into our brains. That really should come as no surprise since we have always observed that little boys are very different behaviorally from little girls, no matter what their environment. This is true for many of our dispositions and overt behaviors. Criminality is included.

No one is suggesting that anyone is destined to be a criminal and that genetic programming is unavoidable. But, anyone who has observed a baby grow into adulthood knows that people get here with characteristic ways of behaving that are recognizable throughout their lives. I have had the opportunity to witness the development of several people from birth to adulthood in my own household and can attest to the fact that personality "quirks" noticed from a very young age are still present and influence the individual's behavior



throughout their life. Quiet, shy babies make quiet, shy adults. Active, happy babies grow into similar type adults. Of course, in some people, intervening events may change some of this, which is an important point. Personality characteristics and resulting behaviors may have a genetic genesis but not unalterably so. They can be influenced, guided, and redirected. However, the

tendencies are still there. It is one of the ways of explaining why children from the same family, same experiences, turn out so differently. There are in-born tendencies with which each person must contend.

We know that certain characteristics are common to criminal personalities. One is impulsivity or willingness to take risks. Several years ago it was learned that a particular gene codes for this personality trait (see Drs. Jonathan Benjamin and Robert Cloningers' independent research, both published in *Nature Genetics*, vol. 12, Jan 1996). Those with the gene were found to be much more likely to engage in risky, stimulating activities, *i.e.*, skydiving, bungee jumping, or criminal acts and other norm violations. This particular gene was also correlated with the decision to pursue a certain profession—law enforcement. It gives some credence to the old belief that there is a fine line between the personalities of crooks and cops.



Another gene was found to be associated with the ability to control and deal effectively with anger. Han Brunner, a geneticist from the Netherlands, conducted a study of one family with a number of members of nefarious repute revealed that, in each case, this gene was missing. I have no doubt other important criminogenic personality characteristics or behaviors will be found to have a genetic component. After all, if the decision to begin smoking has a genetic origin, what doesn't (see *Health Psychology*, vol. 18(1), Jan 1999 pp. 7-13)?

We have successfully mapped the entire human genome. Even so, we are still decades away from knowing what each of those genes do, how they fit into the whole of the human superstructure. Perhaps, with the arrival of that knowledge will be a better understanding of the mix of biology, psychology and sociology that makes us what we are and what we do. It's important to remember, however, that the same personality traits that lead one person to commit bank robberies may drive another to be a war hero or a police officer. It's true that many of the characteristics common to criminals cause them to break the rules. Other noted groups of "rule breakers" are explorers, inventors, and

innovators who have similar personalities. While we desire to control, even eliminate, criminal behavior, we need to be careful that we do not eliminate the characteristics that every society needs if it is going to continue to mature and progress.

KrimeSite Imager

by Associate Professor Joe Morris

A burglary occurs at your residence and your most valuable possessions are taken. You call the police department and they process the crime scene for fingerprints using futuristic looking equipment that you have only seen on television shows. One of those equipments may have been the KrimeSite Imager.

The SIRCHIE KrimeSight Imager utilizes Reflected Ultraviolet Imaging technology, also known as RUVIS, to locate latent fingerprints that are invisible to the naked eye on most non-porous surfaces without the use of powders, chemicals, or vapor treatments of any kind. And unlike alternate light sources and lasers, the KrimeSite Imager is not affected by ambient light, which means it can be used in a broad range of environments, including daylight or total darkness, indoors or outdoors.



The Imager has proven to be both a non-destructive and non-corrosive method of discovering valuable evidence at a crime scene or in a laboratory. In addition, the victims of the crime will appreciate the reduction of messy powders and/or chemicals in their home, office, or vehicle. This also means less clean-up and reduced crime scene contamination, as well as less damage to property and evidence.

The KrimeSite Imager works by its ability to selectively amplify 254nm shortwave ultraviolet light and ignoring all other wavelengths of light. The chief natural source of UV light is the sun. Approximately nine percent of all energy emitted by the sun is ultraviolet. UV light is electromagnetic radiation in the part of the spectrum that lies between x-rays and visible light. In fact, UV differs from visible light only in that the ultraviolet wavelengths are too short to be seen by the human unaided eye.

The UV light reflects off of the residues left behind in a fingerprint and into the specially designed UV lens on the KrimeSite Imager. The UV bandpass filter in the KrimeSite Imager selectively passes this band of UV light to the high gain image intensifier tube while ignoring all other bands of wavelength, including visible light.

The UV light entering the intensifier tube is then amplified several thousand times and converted into visible light providing a visible image of the untreated fingerprint.

The KrimeSite Imager is simple to use and requires minimal training to operate. It can be setup and ready to use in less than a minute. It allows the user to conduct a rapid search of a crime scene for untreated latent fingerprints at a distance, resulting in improved efficiency in locating evidence that might have otherwise gone unnoticed. When using powders and chemicals, it is usually necessary to concentrate your efforts on a specific surface of interest, but with the KrimeSite Imager the entire area can be thoroughly searched in a short amount of time since these methods is not required.

The quick connect camera adapter allows the KrimeSite Imager to be adapted to a film, digital, or video camera for real-time image capture for permanent records of untreated fingerprints. This allows for quick reproduction, enhancement and development of images, as required. And since untreated fingerprints can now be documented prior to attempting to lift them off their surface, the risk of accidentally destroying fragile evidence before it has been safely documented is greatly reduced.

The prints recovered at the scene allow the officer to identify the perpetrator of the burglary and recover your valuable possessions using technology that was not available a few short years ago. The KrimeSite Imager is cutting edge technology and the Criminal Justice Program at Northwestern State University has a KrimeSite Imager that is used to train students enrolled in the forensic classes.

Gulf States Regional Community Policing Institute at *Northwestern State University*

Who We Are

In 1997, the Department of Justice COPS Office funded the creation of the Regional Community Policing Institutes (RCPIs). This is the only national network created to provide low and no-cost training to law enforcement and the communities they serve. The Louisiana Community Policing Institute (LCPI), based at Northwestern State University, was one of the original RCPIs but expanded to become the Gulf State Regional Community Policing Institute (GSRCPi) in 2002, serving



the states of Alabama and Mississippi in addition to Louisiana.

RCPIs deliver and develop innovative cutting edge curricula on emerging law enforcement issues to challenge and improve traditional training. Topics include domestic violence, emotional survival, partnership building, community improvement, domestic preparedness, and terrorism.

Our Mission:

The Gulf States Regional Community Policing Institute is dedicated to building partnerships between law enforcement agencies, government, and community organizations to facilitate the implementation of Community Oriented Policing/Government. Our goal is to enhance public safety and to improve the quality of life through teamwork.

GSRCPi does this in the following ways:

Training – Training is offered regionally and by special request. GSRCPi also contracts with states and agencies to deliver customized curriculum such as the New Chief Management Training Course for the State of Louisiana.

Conferences – GSRCPi presents and co-sponsors conferences to raise the level of awareness regarding Community Oriented Policing, crime prevention, homeland defense, and quality of life issues. We also work to share information, support communities, build partnerships, and create forums for sharing best practices.

Training of Trainers – GSRCPi selects experienced subject matter experts from around the country and uses best practice materials and information to deliver curriculum customized to our region. This cadre of trainers not only provides depth for GSRCPi, but also enhances the knowledge base in departments throughout the region.

Gulf States Regional Community Policing Institute is located in Room 107-C of Kyser Hall on the NSU Campus in Natchitoches, Louisiana.

For more information or to find training in your area, visit the GSRCPi website at www.GSRCPi.org or call toll free at 1-888-283-0966.

CRIMINAL JUSTICE CAREER FAIR

The Criminal Justice Program at Northwestern State University of Louisiana is hosting a career fair for Criminal Justice majors and other majors interested in this field, on Tuesday, March 14, 2006, from 9:00 a.m. to 1:00 p.m. in the Student Union Building on the Natchitoches campus.

Law enforcement and correction organizations, state and local governments, law schools and university graduate programs, and other prospective employers participate in this career fair. You are invited to represent your organization and to present your organization's career options to interested individuals and have them begin the application process for available positions in law enforcement, law, and associated fields. Please contact our office at 318-357-6967 and request a reservation form.

Please plan to be at this fair and make contact with students and other interested individuals as well as representatives of various public and private law enforcement agencies. We look forward to your participation in this career fair! Place this date on your calendar. We will also update this information as the fair date approaches. See you in March 2006!

For further information, please contact the Criminal Justice Program at 318-357-5505 or 318-357-6967.

If you would like to receive an electronic copy of the **NSU Criminal Justice News** which is published monthly during the fall and spring semesters, please send an email with your name, address, and phone number to: crim_just@nsula.edu or visit the Criminal Justice website at <http://www.nsula.edu/criminaljustice>.



Criminal Justice Program