

JANUARY 95 CENTS FROM MAGAZINE FOR YOUNG WOMEN

REDBOOK

A DIET THAT REALLY WORKS!
Even you can lose weight surely and safely!

A new way to feel great!
Exercises by Maurita Robarge

Sexual Harassment:
Help stamp it out on the job

What every young woman should know about hysterectomies

How to make your man feel loved

Winning tennis clothes—plus playing tips from John Newcombe

Help for anyone who owes money

Lady Bird Johnson salutes Smalltown, U.S.A.

Don't miss the new Redbook novel

Who killed John Kennedy?
A surprising view by Shana Alexander

THE LA CROSSE

ALUMNUS

SPRING 1976

**UNIVERSITY OF
WISCONSIN
LA CROSSE**
Spring 1976

ALUMNUS

CONTENTS

- 3 alumni activities
- 4 the vintage years
- 5 summer institutes
- 6 campus update
- 9 oriental artifacts donated
- 10 sports
- 11 alumni newsmakers

I. Thomas Macgillivray, '69, & '70
Alumni Affairs Coordinator
Eleanor M. Kennedy, '64
Alumni Secretary
Christine Koukola, *Editor*
Karla Evenson, '75
Mary Fran Winrich
Associate Editors
Bert Sasse, *Art*
Donald Suter and Paul Currier
Photography

**UW-L ALUMNI
ASSOCIATION
BOARD OF DIRECTORS**

Anna Thomas, '32, *President*
Raymond Sauer, '49 & '64, *1st Vice President*
Joan Markos, '72, *2nd Vice President*
Eleanor M. Kennedy, '64, *Executive Director*
Mavis Carlsson, '62 & '68
Gail Cleary, '55
Elmer Grassman, '55
Janet Hoeschler, '40
Richard J. McLoone, '56
William Otto, '57
H. Allan Poser, '69 & '73
Robert S. Allen, '74
Willis Berzinski, '56

Cover: Maurita Robarge, '68, instructor of physical education, appeared on the January cover of REDBOOK magazine. Articles on Ms. Robarge's fitness program are included in the January through June issues. REDBOOK photo by William Cadge.

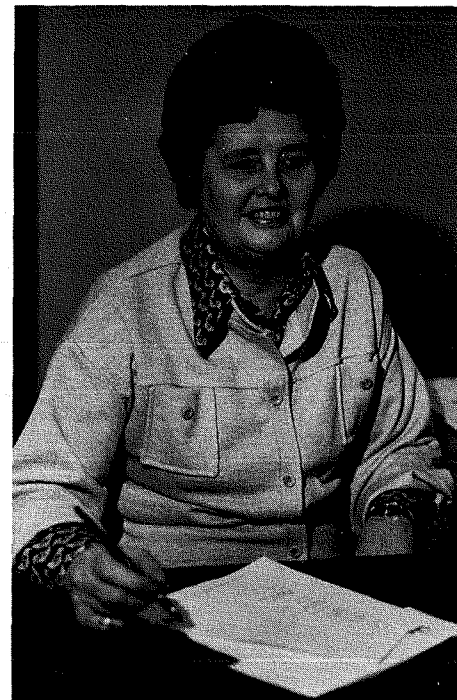
**THE KEYWORD IS
SERVICE**

It has been a pleasure this past year to have had the opportunity to again greet and meet with so many of you as we have traveled to Milwaukee, Madison and Oshkosh. Equally enjoyable have been the La Crosse-based events, such as reunions and Homecoming.

Tom and I hope this open letter to you, the alumni, will provide the vehicle for eliciting new ideas, suggestions and comments that will assist us in serving you.

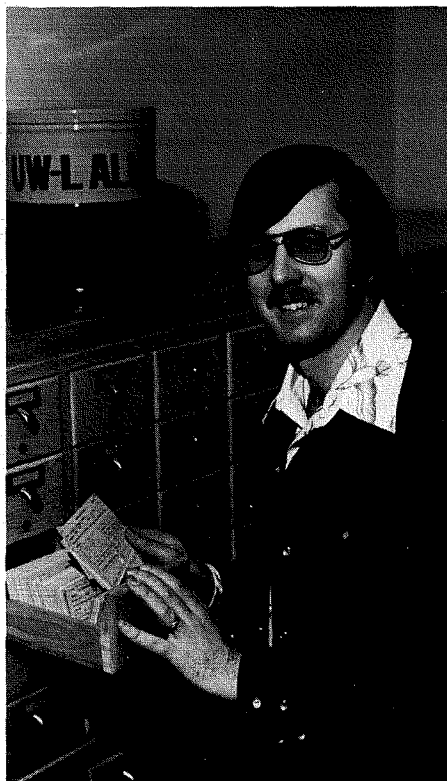
Your UW-L Alumni Association membership provides the means to finance alumni activities, the Alumni Scholarship and other special projects of assistance to the University, students, and faculty. The Association, organized in 1969, has in six years grown to become a viable and active representation on campus.

In July 1976 we plan to institute a computerized annual billing system. This is in response to the many letters we receive from alumni inquiring about membership status. If you have already paid in 1976, please disregard this year's billing. Annual dues are \$5.00. Please ask us about life rates and family and installment plans. Again, your comments will be appreciated.



I look forward to personally greeting and working with many of you in the coming year.

Eleanor M. Kennedy
Executive Director
UW-La Crosse Alumni Association



As I look through our alumni files, some 16,000 strong, the responsibility of "serving you" is brought home. The Alumni Office staff acts as a catalyst between you and your alma mater to keep you informed of new academic programs, to encourage you to participate in the continuing educational opportunities offered, to provide a medium whereby you may actively support (monetarily, in kind or through volunteer work) the programs of the University, and to offer you services (social - receptions and class reunions - and cultural - travel and first nighters) . . . all in keeping with our mission.

The instrument that allows us to do this is the *ALUMNUS*. I hope you enjoy its new format. Your comments and suggestions are always welcome.

In July we will be publishing our first summer issue - a Bicentennial souvenir edition in newspaper tabloid form. Won't you be part of this commemorative issue by letting us know "What's 'news' with you"?

Tom Macgillivray
Coordinator
Alumni Affairs

UW-La Crosse Alumni Association Introduces Class Reunion Program

A cyclical program of class reunions is being introduced by the Alumni Office. The purpose of this program is to let alumni know well in advance the dates of their reunions so that they will have ample time in which to make plans for attendance.

To kick off the new reunion program, the classes of '65-'66 (11 and 10 year) will reunite during Homecoming 1976. The following year, the classes of '52-'53 (25 and 24 year) will have their reunion at Homecoming time; and the pattern will continue... '67-'68 in 1978, '54-'55 in 1979, etc.

If alumni interest warrants, a 50 year class reunion will be scheduled every year in the spring, or whenever alumni prefer. In addition, the Alumni Office staff will be happy to coordinate a reunion at any time for any alumni group making a special request.

Alumni having suggestions or questions regarding the new class reunion format are encouraged to contact Eleanor Kennedy or Tom Macgillivray in the Alumni Office.

1910-1915 Reunion

Responses to the notice of the 1910-15 Class Reunion scheduled for June 18, 1976, continue to be received. The committee, Mrs. Abbie Fauver Jones, '13, Geneva Atkinson Ragland, '14, and Josephine Hintgen, '13, is pleased to report that 30 people, some coming from as far as New York and New Jersey, already plan to attend. A second letter, containing reservation forms, schedule and other information, will be sent early in May to all class members. It is not too late to initiate plans to attend!

1965-1966 Reunion

Members of the classes of 1965 and 1966 will want to mark their calendars now for October 16, 1976. That's the date for a special reunion during UW-L Homecoming festivities. A volunteer committee of class members is meeting regularly with Tom Macgillivray of the Alumni Office to plan a memorable reunion. They are: Darryl Damon Erickson and Tari Batchelder Kleven of the class of '66 and Mary LaPlant Esten, Al Bassuener, Dave Parisey and Sonny Wilkins from the class of '65. All but Wilkins, an Onalaska resident, live in La Crosse.

The committee and Tom invite anyone with ideas, suggestions or special requests for the reunion to contact them through the Alumni Office. Class members should watch for a special mailing about the reunion and detailed plans to be announced in the summer (July) issue of the ALUMNUS.

Alumni Celebrate UW-L Victory

Over 100 alumni from Fond du Lac to Green Bay attended "Alumni Buck Nite" in Oshkosh on February 18. The evening was highlighted by a 92-90 victory over UW-Oshkosh.

Jim Flood, '57, Athletic Director at UW-O, was kind enough to make the necessary arrangements in the Kolf Sports Center-reserved seating behind the Indian bench and a half-time hospitality room. Bill Vickroy, La Crosse Athletic Director, supplied the refreshments at half-time.

Following the game, a caravan headed to the Oshkosh Holiday Inn where over 100 alumni gathered to celebrate the victory and renew old acquaintances. Refreshments and food were served courtesy of the Alumni Association.

John P. Olson, '64, better known as "Ole," was the winner of the door prize--a beautiful hand knit golf shirt--donated by Metro Sports of La Crosse and Neillsville. "Ole" almost had the distinction of being the last one to leave, too, but wife Julie (Metternich), '64, prevailed.

Besides Eleanor Kennedy, '64, Executive Director of the Alumni Association, and Tom Macgillivray, '70, Alumni Affairs Coordinator, faculty members Bill Vickroy, Viggo Rasmusen, Rollo Taylor, '56 (freshman coach), and Burt McDonald (varsity coach) were in attendance.

'76 ALUMNI CALENDAR

May 15

Commencement

June 18

1910-15 Class Reunion

July 15

Rural Teachers Luncheon

Sept. 24-26

Beta Fall Reunion

(satellite) - Madison

Oct. 16

HOME COMING! UW-L vs. UW-Stout

1936 Class Reunion (40th)

1965-66 Class Reunion

Oct. 28

WEAC Convention (Milwaukee)

Reception-Downtowner

Nominating Committee Report

A nominating committee, appointed by Alumni Association president Anna Thomas, has prepared a slate of candidates to be voted upon at the Annual Meeting for a three-year term. The candidates are: Gail Cleary, Anna Thomas, H. Allan Poser and Robert Allen. Additional names may be submitted from the floor. Serving on the committee were Ray Sauer, chairman; Ardy Aarstad and Kay Aspenson.

Alumni Attend Madison Reception

Almost 300 alumni, guest coaches and friends of the University attended a reception held March 19 at the Park Motor Inn, Madison, in conjunction with the WIAA Boys Basketball Tournament. The reception was co-sponsored by Richard "Dick" Jensen, '57, and the UW-L Alumni Association. Jensen, who is married to the former Kathy Gill, '57, is Vice President for Sales for Dielectric Corporation, Menomonee Falls.



These La Crosse alumni were among those who stopped by the hospitality room during the Boys WIAA Basketball Tournament held in Madison: (left to right) James B.

Molstad, '66, Gregory Mattison, '71, and Thomas A. Busse, '70. Mattison was presented with the "Alumni Coach of the Year" plaque at the reception.

*Wanda
Tom
Batchelder
634
1618*

THE VINTAGE YEARS



Janet Prendergast Eldred, '20.

Dr. George Gilkey of the History Department recently surveyed a sampling of all La Crosse alumni through 1973. The information gathered was to provide the basis for a chapter in his book on the history of the University of Wisconsin-La Crosse, to be published later this year. Janet Prendergast Cone Eldred, '20, responded with a vivid and entertaining description of her memories of La Crosse. We would like to share them with you . . .

It was 1918 and we were in the last throes of fighting a War to End War. Our country was young and insular. Roads were considered good, if they were graded, but woe betide you if you drove an auto and it started to rain. A car was still a plaything and not many had one. Most people lived and died within 50 miles of their birthplaces.

Physical education courses in high schools were rare. There were football and basketball coaches, but to have a physical education teacher just for girls was quite a phenomenon. When I was a senior in a Minnesota high school, that happened. Mr. Adams, fresh out of La Crosse Normal, appeared and proceeded to dazzle us. We had gym classes, marched to music, and learned the schottische, mazurka and polka. We all immediately fell in love with him; well, not so much with him, as with what he represented . . . beauty in rhythm and motion, set to music, things we never knew existed. Nothing would do but I go to La Crosse.

Of course I knew nothing, really, about physical education. Since I had the idealistic view that it would be all dancing and music, I was in for a rude awakening. Our class worked for four hours daily on the floor; and I mean we sweated . . . marching tactics, apparatus work, free exercises, games and dancing. After the first agonizing week, our muscles ceased to ache and toned up. Uniforms consisted of white shirts and dark trousers for men and white middies, black bloomers, black cotton stockings, and white tennis shoes for women. Following two full years of this we graduated, some of us very proficient, some rather sketchy, as to games and coaching, but all of us thoroughly grounded in the old German Turnverein method of physical education.

We were most fortunate to have for our dancing instructor Leonora Thompson who had a clipped eastern accent and had danced professionally on the stage in the musical hit "Chu Chin Chow." She was the first adult I had ever seen with bobbed hair, and she walked with the grace of a ballet dancer. Miss Thompson was glamour personified, a martinet who demanded and expected perfection, and a very fine teacher.

Our teachers were completely dedicated to their subjects and students. The physical education department was no exception. It was headed by Walter Wittich, so tall, dignified and proficient in his work. There was Robert Nohr with a pixie sense of humor, tireless in turning out perfect classes in free exercises and marching; Fred Hall, so quiet and breathtaking on the high horizontal bars, with a keen wit which sometimes stung, but more often amused; and, of course, Leonora Thompson.

Teachers in other departments were the same, all patient in trying to show us, young and callow, some of the rewards to be gained by study and application. I do not remember one teacher who ever acted bored; each taught as if the subject were entirely fresh and new. Myrtle Trowbridge was a marvelous historian; and O.O. White of English, with his scintillating and, for that day, rather radical ideas, made us think and speak on our feet. I also recall the Latin teacher, Hattie Anderson, who helped so much to awaken my mind and curiosity.

And there was David Coate, a delightful little man who enjoyed his work . . . his British poets. It was exhilarating to hear him read from Browning or Keats and to experience the meaning he put into their words. Once a year, he had us to tea at his house. His wife was an Englishwoman; and their house was a bit of England, all chintzes with books everywhere. Long ago, they bothered to give us rawboned and gauche prairie children a touch of "gracious living."

No, I have never set the world on fire. I have been, as the TV people proclaim, "just a housewife." But the training I had at La Crosse Normal has stayed with me all my life. It gave me a strong and well-developed body or, as Mr. Wittich used to say, a sane mind in a sound body. It taught me discipline. Its teachers aroused my curiosity in all things and insisted that I use my own mind. When tragedies came, as come they must, I was able to fall back on that strength. When happiness was mine, I was able to enjoy it more fully and appreciate it.

I know this is the constant plaint of the old, but I do think it is much more difficult for the young to grow up now. In our day, right was right and wrong was wrong, and everybody knew it. It made it much easier for us to have certain standards set, standards to try to follow, if not always successfully. I seem to hear Mr. Coate quoting Browning, "Ah, but a man's reach should exceed his grasp, or what's a heaven for?"

I am glad I was born and grew up in a simpler age, and I look back to La Crosse as being part of that age. I really am grateful that long ago, I fell in love with Mr. Adams -- and the mazurka!

Mrs. Eldred resides at 1415 West North St., Apt. 309A, Anaheim, California 92801.





summer opportunities

The Division of University Outreach has arranged both credit and non-credit summer activities representing a wide range of professional, academic and personally rewarding interests. For complete course descriptions and registration information, contact OUTREACH at UW-La Crosse.

All courses are taught on campus unless otherwise indicated.

ART

- ***Historic La Crosse Architecture**
(Jn. 15-25) 2 cr. 10:00-12:00 T TH 10:00-2:00 F
- ***Understanding Basic Elements of Color**
(Jn. 15-Ju. 1) 1 cr. 1:00-4:00 T TH
- ***Basic Pottery Forms**
(Jn. 15-Ju. 8) 1 cr. 8:45-10:45 T TH

EDUCATIONAL MEDIA

- ***Still Photography**
(Jn. 15-Ju. 8) 2 cr. 8:40 & 9:50 MTWTH
- ***Preparation of Visual Materials**
(Ju. 12-Aug. 5) 2 cr. 1:20 & 2:20 MTWTH
- ***Fundamentals of Motion Picture Production**
(Jn. 15-Aug. 6) 3 cr. 11:00 MTWTHF
- ***Production of Multi-Media Slide Presentations**
(Jn. 15-Aug. 5) 2 cr. 7:30 MTWTH
- ***Introduction to Cataloging and Classification**
(Jn. 15-Aug. 5) 3 cr. 8:40 & 9:50 MTWTH
- ***Instructional Technology**
(Jn. 15-Ju. 9) 3 cr. 8:40 & 9:50 MTWTH
- ***Television Utilization and Facility Planning**
(Jn. 18-Ju. 9) 2 cr. 7:30-4:30 F
- ***Photography Clinic for High School Students**
(Ju. 19-23 or Ju. 26-30) 0 cr. 9:00-4:30 MTWTHF
- ***Preparation of Audio Visual Materials**
(Jn. 21-Ju. 2) 2 cr. 7:50-11:45 MTWTHF Black River Falls
- ***Photography Copy Techniques**
(Jn. 7-8) 1 cr. 8:00-5:00 MT
- ***Preparing Materials for IMC's**
(Jn. 7-8) 1 cr. 8:00-5:00 MT
- ***Teaching Library Media Skills**
(Jn. 9-10) 1 cr. 8:00-5:00 WTH
- ***Television Utilization**
(Jn. 9-10) 1 cr. 8:00-5:00 WTH

ELEMENTARY EDUCATION

- ***Introduction to Individually Guided Education**
(Ju. 12-23) 2 cr. 1:00-4:00 MTWTHF
- ***Reading for Main Idea and Sequence**
(Jn. 21-25) 1 cr. 1:00-4:00 MTWTHF
- ***Teaching Reading with the Newspaper: Recycling Old News for New Ideas**
(Jn. 14-18) 1 cr. 1:00-4:00 MTWTHF

SECONDARY EDUCATION

- ***Computer Applications in Guidance**
(Jn. 21-25) 1 cr. 1:00-4:00 MTWTHF
- Introduction and application of the Guidance Information System (GIS), a computerized data retrieval system, as a means of providing students at the secondary level with information about occupations, post-high school educational institutions and financial aid information.
- ***Computer Simulations in Social Studies**
(Jn. 28-Ju. 2) 1 cr. 7:00-10:00 MTWTHF
 - ***Advisor-Advisee: School Team Related**
(Ju. 5-9) 1 cr. 1:00-4:00 MTWTHF
- Explore advisor-advisee relationships by examining the following major program functions: program planning, parent conferences, human development activities and survival assistance.
- ***Shared Decision Making**
(Ju. 26-30) 1 cr. 1:00-4:00 MTWTHF

*Futuristic Studies

- (Aug. 2-6) 1 cr. 1:00-4:00 MTWTHF
- Educators will be oriented to the world of the future through the study of Delphic Probe and other techniques.
- ***Curriculum and Management for English Program Directors**
(Jn. 28-Ju. 2 plus 6 addnl hours) 1 cr. 8:40-9:50 MTWTHF
 - ***Inservice Program Planning**
(Ju. 12-30) 1 cr. 8:40-9:50 MTWTHF
 - ***School Principalship**
(Jn. 15-Ju. 9) 2-3 grad. cr. 10:00-12:00 MTWTHF
 - ***Career Education Workshop**
(Jn. 7-18) 2 cr. 8:00-4:00 MTWTHF
 - ***Needs Assessment**
(Jn. 14-18) 1 cr. 1:00-4:00 MTWTHF
 - ***Computer Aided Instruction for Elementary Teachers**
(Jn. 21-25) 1 cr. 1:00-4:00 MTWTHF
 - ***Advisor-Advisee: Individually Guided Motivation**
(Jn. 28-Ju. 2) 1 cr. 1:00-4:00 MTWTHF
 - ***Teacher-Student Rights**
(Ju. 5-9) 1 cr. 1:00-4:00 MTWTHF
 - ***Learning Centers and Stations**
(Ju. 12-16) 1 cr. 1:00-4:00 MTWTHF
 - ***Value Education**
(Ju. 26-30) 1 cr. 1:00-4:00 MTWTHF
 - ***Goal Setting--Self Assessment**
(Ju. 26-30) 1 cr. 1:00-4:00 MTWTHF
 - ***Individually Guided Education--Secondary**
(Jn. 14-25) 2 cr. 1:00-4:00 MTWTHF

ENGLISH

- ***Provocative Approaches: Wisconsin Authors**
(Jn. 15-Ju. 9) 3 cr. 9:50-12 Noon MTWTHF

GEOGRAPHY

- ***Geography Field Trip to Eastern Europe**
(Ju. 7-29) 3 cr.
- A 23-day field geography course to Czechoslovakia, East Germany, Poland and Hungary.

HEALTH EDUCATION

- ***Nutrition Education**
(Jn. 15-Ju. 9) 3 cr. 1:20 & 2:30 MTWTHF
 - ***Health Coordinator, Grades K-12**
(Ju. 12-30) 2 cr. 11:00 & 12:10 MTWTHF
 - ***Methods and Curriculum**
(Jn. 15-Ju. 9) 3 cr. 11:00 & 12:10 MTWTHF
 - ***Veneral Disease**
(Jn. 18-19) 1 cr. 4:00 FS
- Study of causative agents, spread of disease, prevalence, treatment and control.
- ***Bread and Butterflies**
(Jn. 25-26) 1 cr. 4:00 FS
- Workshop in careers and feelings designed to acquaint elementary school teachers, student teachers and administrators with the "Bread and Butterflies" career development series, as broadcast on educational television. The series enables children in the 9-12 age bracket to explore the relationship between their lives and the world of work.
- ***Stress Control**
(Ju. 9-10) 1 cr. 4:00 FS
- Practical experiences in relaxation skills.

(Continued on Page 15)

CAMPUS UPDATE

Enrollment Ceiling Spurs Admission Changes

"We are planning for a freshman class of 1860 students, but even with that number we will more than likely have to turn some applicants away," says Admissions Director Gale Grimslid, referring to the University's 1976-1977 enrollment. Due to budget limitations, UW-L has a ceiling on the number of students who can be admitted next year. That figure is 7860.

Due to the extremely large number of applications received from prospective freshmen, Admissions earlier in the semester asked for \$100 fee deposits as evidence of intent to enroll from those granted admission. This was the first time that such an advance deposit has been used, Grimslid said. He explained that the deposit was the result of a January UW System survey which showed that a higher percentage of students was making multiple applications to UW schools this year than ever before. In the System, from 44 to 66 percent of the students who applied at one school also applied at others. At UW-La Crosse, 53 percent of the freshman applicants had also applied at other system schools. The UW-L fee deposit was a method of sorting the serious applicants from those who had made several applications and were not so strongly committed to La Crosse.

CELLAR REMODELED -- An expanded and remodeled Cellar in Cartwright Center had its grand opening the first weekend in April. Featuring cedar, brick and nostalgia in its decor, the Cellar is a total program area, says Dr. Robert Mullally, Director of Student Activities and Center. Right, Mullally and Ed Burrell, a Holmen senior on the Student Centers Board, enjoy a conversation in booths made of church pews from the old St. Wenceslaus Church. Large photo shows the bar at left (the stools came from Luck's Tavern) with kitchen and serving windows behind.

By March 15, Admissions accepted 3572 applications which Grimslid says should generate a class of 1860.

Grimslid explained that the remaining 6000 places for next year have been allocated for continuing sophomores, juniors, seniors and graduate students. For transfer students, only those in good academic standing can be accepted, he stated.

He also noted that alumni who have children or know students who may want to enter UW-L in 1977-78 (this year's high school juniors) should advise those prospective freshmen to apply early. Applications for that class can be accepted after Oct. 1, 1976.

Bicentennial Projects Underway

The University Bicentennial Committee has compiled a list of projects planned for UW-L's observance of the anniversary. Projects currently underway are:

*Formation of an **Alumni Association** committee (Gail Cleary, '55, Janet Hoeschler, '40, and Robert Allen, '74) to gather artifacts, mementos and other items of nostalgic value for permanent display on campus.

*A radio series, the **WLSU La Crosse American Issues Forum**, six programs dealing with local issues and involving area residents in discussions.

*A 30-minute film, "**La Crosse - A River City**," on the history of La Crosse and the area. The production, to feature clips from old home movies and pictures from the Area Resource Center, is scheduled for an October completion.

***Bicentennial Sketches**, a series of articles on local history by university faculty and other La Crosse citizens. Most will appear in a special commemorative issue of the city daily newspaper; an eventual book publication is being considered.

***Television spots**, one-minute features on episodes in local history, for broadcast on a local commercial station.

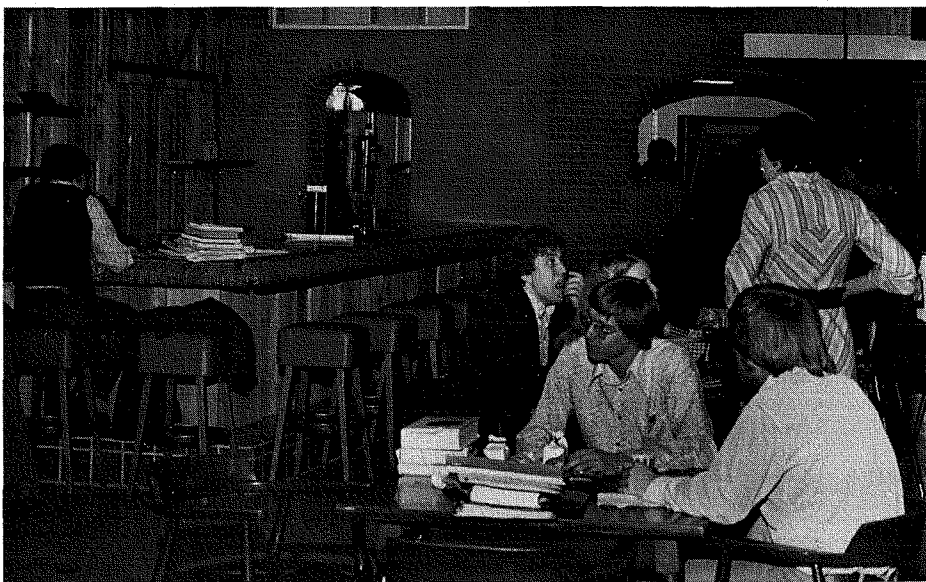
*A slide-audio presentation on changes in **La Crosse area education** since 1890 being prepared by the Elementary Education Department.

*A **climatological project** to establish a historical sequence of La Crosse temperatures for the past 200 years. Estimates will be established for years prior to U.S. Weather Bureau records beginning in 1872.

***Music in our Schools Day**, May 4, this year highlighting Bicentennial music in local schools by the student chapter of Music Educators National Conference.

*Dedication of La Crosse's **Harry J. Olson Senior Citizens Center** with indoor and outdoor activities planned by the Music in Recreation class.

***Bicentennial Youth Debates** partly funded by the National Endowment for the Humanities and held by the Speech Communications Association of America.



College of Education In-Service Meet Set

"A unique opportunity when the whole College of Education can talk about curriculum as a group" is how Dr. Clair Rood describes an in-service conference for the College of Education set for May 17 - June 4. Rood, Associate Professor of Educational Media, is the conference director. Co-director is Elizabeth Bressan, physical education.

The two won a grant for the meet in a competition open to faculty of West Central Wisconsin Consortium (WCWC) schools (UWs La Crosse, Eau Claire, River Falls and Stout). WCWC is the official permanent planning agency for these four schools. Proposals for the grants were for projects which would improve the quality of undergraduate teaching at all member campuses. Consortium observers have been invited to attend the conference.

The conference is planned to present information on competency based teacher education (CBTE) and to evaluate, design and-or modify the professional core curriculum as a total College of Education, say the directors.

Competency or performance based teacher education is a structured system of teaching which has the student demonstrate his understanding of the subject by doing. After the objective of the lesson is stated, the student gets instruction in a variety of media and then demonstrates his mastery of the subject by behaving in the manner outlined in the objective.

Dr. Howard Rose, Dean of the College of Education, says there is a body of knowledge, ideas and skills a teacher needs to acquire which we can identify and plan to accomplish in our courses. "Then," he notes, "we should follow up on our students' competence in the field."

Although most teacher preparation institutions have done little with evaluation, Rose is convinced that we need to know how well our graduates meet the needs of their schools. To this end, area educators and representatives of the Wisconsin Department of Public Instruction have been invited to attend.

A committee of members from each of the academic departments in the College has worked to plan the conference structure.

College faculty will have several options during the first week. They can get basic information about CBTE, work on curriculum in or among departments, or use

resources collected for the meet. Once faculty have become familiar with CBTE, they will have time to "take a healthy look" at the professional core curriculum, says Rood, adding, "this could evolve into a total College of Education team approach."

First day keynote speaker will be Dr. George Dickson, Dean of the College of Education at the University of Toledo, Ohio. He will outline CBTE with several national and local models. A reactor panel from the observing groups will respond.

On the second and third days, four case studies of CBTE programs used at Toledo, Alverno College in Milwaukee, UW-Stout, and UW-Superior will be presented by personnel from these schools.

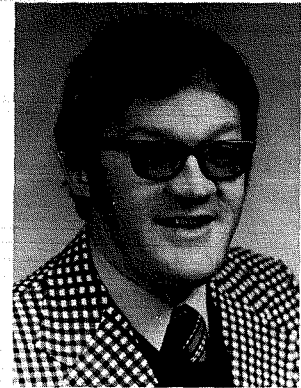
For conference week two, the planners plus ten faculty will meet to synthesize the first week's activities and identify patterns.

The committee of five will spend the last week conducting an evaluation of the meet, writing final conference documents, and readying recommendations for the Dean.



James L. Beers, an associate professor of sociology-anthropology, died March 17. He was a member of AAUP, the American Sociological Society, the National Council on Family Relations, the National Probation and Parole Association, and the New York Academy of Sciences. Dr. James Anderson, his department chairman, noted that "during Beer's 18-year tenure on our faculty he taught over 2000 students in the course Marriage and the Family and served as advisor to the Vets Club." Beers was also active in Salvation Army work in the city.

NEWS NOTES NEWS NOTES NEWS NOTES



Alfred C. "Ace" Stadthaus, '67 and '75, became the director of Student Financial Aid Jan. 1. "Ace," who earned his name and fame as the school's leading scorer during the 1966-67 basketball season, is now responsible for the administration of all direct state and federal aid programs to students. Over half the student body receives some form of financial aid including grants, loans or employment in various work programs. Stadthaus, who succeeds Clarence Althaus, is married to the former **Jeanette Anderl, '67.**

Shirley Haas, coordinator of Women's Education Resources, was recently appointed to the Wisconsin State Governor's Commission on the Status of Women.

Richard Boudreau, English, is giving a series of radio lectures on Wisconsin authors on WHA-FM this semester. The program will feature the poetry of UW-L's John Judson on May 4. The series ends on May 18.

"Introduction to Women's Studies," a course offered for the first time this semester, is "going quite well," according to Judith Green, Director of Women's Studies and the class teacher. She notes that it's been "really interdisciplinary" with experts from campus departments and local women professionals as guest lecturers and says the class will now be offered at least once a year.

The UW-La Crosse **Cardiac Rehabilitation Program** has established a series of free monthly lectures by professionals on heart disease and preventative practices. This general education program has dealt with anatomy of the heart, nutrition and menu planning, and stress reduction in the past months. **Dr. Philip Wilson**, a physical education professor recently named a Fellow in the American College of Sports Medicine, directs the Cardiac Rehab Program. **Dr. Thomas Gushiken** is associate director. Alumni who wish to receive the "Cardio-Gram," a free newspaper on fitness and the Cardiac Rehab Program, should contact Dr. Gushiken at UW-L.

Chancellor, University Changed in Five Years

On January 3 and 4, 1971, a huge snowstorm covered central Wisconsin. It was so bad that UW-L Vice President Maurice O. Graff closed the school. Meanwhile, Kenneth E. Lindner was trying to get from Madison to assume his duties as the new La Crosse chancellor. He was on the road as soon as the storm slowed . . . and finally arrived for his first day at about 3:30 that afternoon to find Main Hall locked and vacant.

Now, looking back five years down the road from that "auspicious start," Lindner sees himself as a different person from the man who came to lead that deserted university. Besides knowing more about a university, Lindner says he's "lost the illusion that you can do things overnight; in fact, it's probably not wise to do them overnight." "Important changes should take time; this gives us a chance to review them at every step and to build a good foundation," he reflects.

If the man is different after five years, so is the university he's headed. The addition of a tremendous amount of space, a difference in the way the community perceives the university, and reorganization of the school's structure are major changes in the last five years.

The increased space is in the form of two recent additions, the Fine Arts and Classroom Buildings. (The Classroom Building will soon be known officially as North Hall.) "It's unbelievable that professionals could work in those old quarters, especially in the music and art area. There's no question in my mind that facilities make a difference; good facilities strengthen a department's program and morale - and the way students perceive the excellence of the department," Lindner declared.

The Chancellor calls the way the community perceives the excellence of the University a "very important" change. He cited the school's exposure to people in the town, the medical, business and industrial communities as a catalyst for a "genuine understanding by people in this area that UW-L is indeed an outstanding kind of institution."

The strong link provided by the Cardiac Rehabilitation Program, the new Physical Therapy Program, and the strengthening of the Health Education Department have created new bonds between the school and the medical community, Lindner says.

He notes that the business and industrial communities have had constant contact with the new School of Business. That was a Department of Business and Economics in Letters and Sciences when he became chancellor. In building the School, an accounting major, "a crucial foundation for a

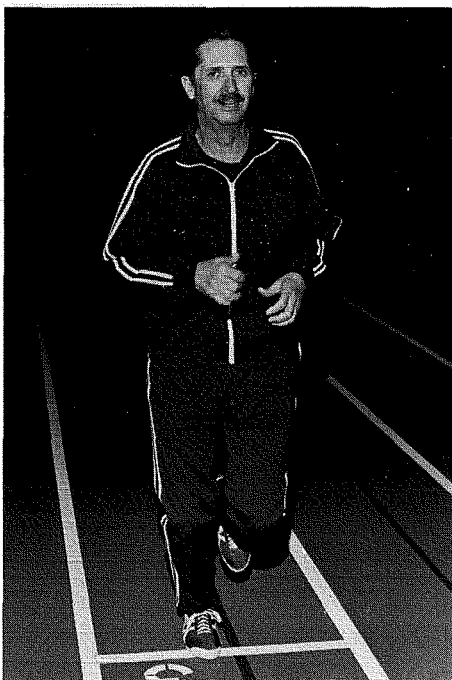
strong School of Business," and considerable staff have been added.

Lindner also called the Division of University Outreach, "our commitment to work with all the people of the region," and the River Studies Center, "a demonstration that this institution can generate very high level research helpful to all people in the area," instrumental in enhancing the school's image.

The Chancellor's philosophy about developing new programs has been that they shouldn't duplicate offerings of other schools in the UW System. For example, majors in computer science and community health education established since Lindner arrived are the only such majors offered in Wisconsin.

While Lindner is proud of the new program, he is also adamant that "the backbone of any institution is a very, very strong liberal arts program." "Without that," he says, "you simply cannot offer top quality education. All our programs, no matter how professional they might be, bear the mark of our liberal arts program because we have determined that our graduates shall be educated people."

The third major change since Lindner became chancellor is in the organization of the University. The restructuring included placing the School of Health, Physical Education and Recreation in the College of



Chancellor Lindner jogs daily in the Mitchell Hall fieldhouse.

Education; separating the School of Business Administration; creating the School of Health and Human Services in the College of Arts, Letters and Sciences; and placing responsibility for graduate programs "where it should be -- in the academic departments under the separate deans."

"You have to organize the way you can best get the job done; there's nothing sacred about an established structure," Lindner believes. "All organization should be temporary and flexible so we can change it if things are not getting done," he stated.

The changes have been exciting, but Lindner finds the rewards in what he calls "the real test." "Our students go home and talk to other young people and if they didn't like it here the others wouldn't want to come -- but the fact is that we're inundated with students - and that attests to the success of our faculty," he says. And that's the way it should be, he thinks, "because these young people are investing four years of their lives; we should make their return on that investment a great educational experience."

Lindner believes that the students' positive attitudes about UW-L spring from the faculty's dedication to teaching. "We are here to offer the best kind of teaching that we possibly can. I've interviewed every faculty member we've hired and told them our goals are excellence in the classroom and excellence in their total relationship with the students," he declared. "As a result, our faculty are really dedicated; this has more impact on the school than anything I've done or could do. Knowing our first priority makes a difference," Lindner asserts.

A former chemistry teacher himself, the Chancellor says his time is so filled with a variety of challenges that he doesn't have time to miss teaching "except when I visit with people in the Chemistry Department."

Lindner insists that students have input for the school and has been a strong supporter of their evaluation of the faculty. He has also pioneered faculty evaluation of the chancellor.

Other highlights of his years as chancellor which Lindner mentioned are:

*affirmative action - "Open recruiting and hiring makes a great deal of difference in the kind of people we've gotten; it's had a positive impact on this University."

*the 1975 International Women's Conference - "We didn't do it perfectly but it was a great experience for me and many people on this campus."

*faculty governance - "The Faculty Senate has real concern for major policy questions and handles them in as responsible a manner as anyone could want."

*student government - "This was almost non-existent when I came, but after a difficult rebuilding task it is now functioning."

*development - "This program has been established to see to the future of the University for those who will guide its path in years to come."

Oriental Artifacts Donated in Memory of Educator

The University of Wisconsin-La Crosse Foundation has announced the establishment of a memorial collection in honor of Miss Frances Lapham, long-time area resident and prominent educator. The collection of antique oriental artifacts was presented to the University Foundation by Lora, Frances and Marjorie Palmer of Walnut Creek, California. The Palmer sisters are alumni of the University and former residents of La Crosse.

Included in the collection are two Chinese robes, a Chinese water pipe and two Japanese silk parasols. The items were on public display during the month of March at the William Doerflinger Department store in La Crosse. Larry Dittman, Executive Director of the UW-La Crosse Foundation, said several other special showings are planned.

One of the robes is believed to date from the Ch'ien Lung Period, circa 1760. It is of black silk, overall worked in gold thread. The other robe is done in blue silk satin, colorfully embroidered with the phoenix bird, ancient symbol of Death and Resurrection. Both robes are in perfect condition, of exceptional workmanship and are considered irreplaceable, Dittman said.

The Japanese parasols date from the late 19th century and are constructed of colored silk on a bamboo frame.

An antique water pipe completes the collection. It is described in detail in Pearl Buck's *The Chinese Children Next Door*. Miss Buck is an acquaintance of Marjorie Palmer. The ornate pipe is thought to have been used for smoking opium and is some 100 years old.

All of the artifacts were obtained by Frances Lapham during her travels in the Orient from 1930 through 1933. They were passed on to the Palmer sisters as keepsakes and have now been presented to the University through its Foundation. In making the gift, the sisters told of wanting to share the collection with the people of the La Crosse area, which had been their home and that of their aunt, Frances, for many years.

Frances Payne Lapham was born in 1861 to a Caledonia, Minnesota pioneer family. She rose to considerable prominence as a teacher and school administrator in the upper Midwest. Her career began less than 10 miles south of Caledonia at her home school, near her parents' farm. Not long after this, she moved to La Crosse and taught at the old, one-room "third ward" school--"someplace down near the river in a converted saloon," as



Frances Payne Lapham, shown in her cutter, on her way to school in Spring Grove, Minn.

she recalled. After teaching in Miss Jane Usher's private school in La Crosse, she returned to Caledonia to become Superintendent of Schools. She went on to teach and administer at school districts in New Albin, Iowa; Spring Grove, Deer River and Itasca, Minnesota; Grand Rapids, Michigan and at the University of South Dakota. Her work then took her to Milwaukee, where she served as Superintendent of the Wisconsin Industrial School for Girls, retiring from that position in 1933.

Miss Lapham quickly began another busy life in La Crosse, plunging head-long into the cultural and social life of the post-depression years. Residing at 952 Cass Street, she was known about the community for her public service work and involvement in local activities. She was particularly interested in the La Crosse Little Theatre Guild and the American Association of University Women.

Frances Lapham won national acclaim as one of the leading educators and education administrators of her day, receiving many awards and commendations for her work. She died in 1954 in La Crosse at age 94.



An August, 1942 picture story in the *La Crosse Tribune and Leader Press* shows Marjorie Palmer with the Lapham Collection, as part of a presentation before elementary students at the Teachers College Training School.

The Palmer sisters are graduates of what was then known as La Crosse Normal School--Lora in 1911, Frances in 1918 and Marjorie in 1922. The children of Louis and Cora Lapham Palmer, the sisters lived at 1706 State Street during their years in La Crosse. Now in retirement, they reside at 1525 Canyonwood Court No. 3, Walnut Creek, California 94595.

Dittman said that several people have expressed interest in contributing to the Frances Lapham memorial. He asks that inquiries be directed to him in care of the UW-La Crosse Foundation.

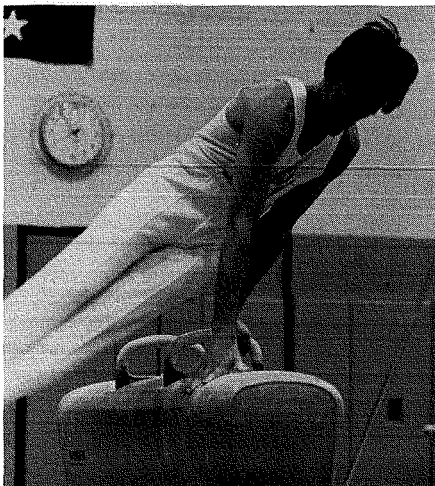
The Lapham Collection, as displayed at the William Doerflinger Department Store in La Crosse. The black and gold robe (right) is believed to date from the Ch'ien Lung period, circa 1760. The antique pipe is in the foreground. The ginger jars were included to enhance the setting but are not part of the collection.

UW-L Men Continue Athletic Success

A second straight NAIA National Championship for the UW-L gymnastics team highlighted another successful winter sports program at the University.

La Crosse hosted the 13th Annual Gymnastics Nationals, and head coach Jim Howard's gymnasts edged arch rival Oshkosh in thrilling team competition March 5. La Crosse totaled 195.75 points to Oshkosh's 192.9. The victory was especially sweet for Howard's crew as Oshkosh had soundly defeated them in a triangular meet three weeks earlier.

The following night the Indians put the icing on the cake as three gymnasts took national titles in the individual competition. Team captain Randy Wray took the pommel horse with a score of 8.8. Bob Kolinek won the horizontal bar with 8.67 and Gordon Moll took the still rings with 9.07.



Randy Wray, a senior from Waukesha, took first place in pommel horse at the NAIA National Championships held at UW-L.

Burt McDonald's success with the basketball program was also a big story on campus. The Indians started slowly, losing two of their first three conference games; but suddenly McDonald found a line-up that clicked and La Crosse proceeded to win 12 conference games in a row.

In a match-up even the schedule makers couldn't have hoped for, La Crosse and Eau Claire came down to the last conference game with identical 13-2 records. The championship was played at the university arena in Eau Claire before a standing room only crowd of over 3,000 and an area television audience. Eau Claire won a heart stopper, 61-55, to continue its domination of the conference.

La Crosse did, however, earn a berth in the NAIA District 14 Playoffs but was defeated in the first round by eventual champion UW-Parkside, 77-66.

Junior center Larry Halverson, 6'-7", was awarded team MVP and was named to the

All-WSUC team along with teammate Tom Checkai. Halverson also gained All-District 14 honors while 6'-6" forward Ed Uhlenhake was named to the honorable mention team of the WSUC.

McDonald was an overwhelming choice for WSUC Coach of the Year. "It was a great honor," McDonald said later, "but it sure helps to have the players who can get the job done."

The wrestling team conducted its toughest schedule in years, taking trips to Baton Rouge, La., and Thunder Bay, Ontario. The Indians compiled a 12-7 dual meet record and finished fourth in the WSUC Championships held at Eau Claire. Although no individual won a team championship, every person on the squad scored.

Women Earn Conference Crowns

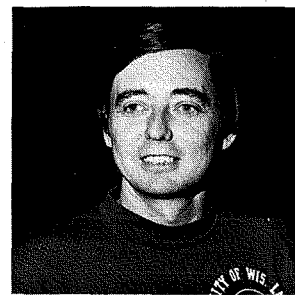
A successful 1975-76 winter season brought home regional and conference crowns for the UW-L women's basketball team, advancing them to the Nationals at Pennsylvania State University.

Arch rival UW-Stevens Point proved a stumbling block for the Roonies in season play giving them their only conference loss. Undaunted, the Roonies came back beating Point 65-60 in the play-off game and 65-59 in the final tournament meeting.

The team's only other loss was to Kansas State, 84-63, ending the season with a 15-2 overall record.

A 76-69 win over Indiana State University gave UW-L the Midwest AIAW Championship. Senior captain Sue Meredith, scoring 26 points, 13 rebounds and 4 assists in the Indiana game, boasted the third highest series in the tournament with 78 points. Freshman teammate Terri Sheridan grabbed the second highest with 79.

The Roonies bowed to California State-Fullerton in the opening round of national competition and then to Tennessee Tech. Coach Karen Toburen said, "We aren't even close to developing all the talent that's on the



Burt McDonald, WSUC Coach of the Year.

The swim team under the direction of coach Mike Miller had perhaps the most inspiring story of the season. After Miller lost his six top point scorers early in the season for a variety of reasons, pessimists were predicting a last place finish for the team. However, the remaining members came through in the championships at UW-Superior for a fifth place finish. Freshman Bill Van Atta had a seventh place finish in the 500 yard freestyle to lead the team.

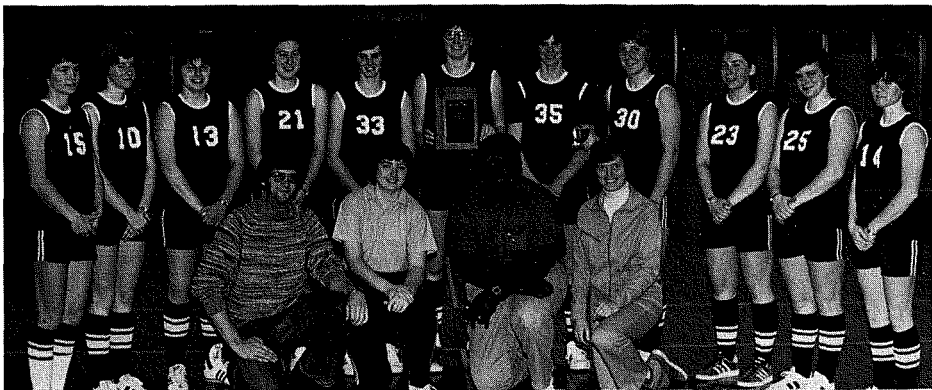
The opportunity to participate in the Midwest and Nationals was a tremendous learning experience."

Coach Martie Stephens' badminton team also took the conference title with 113.5 points. Janet Wigglesworth defeated teammate Laverne Uvodich for the Flight A Championship and paired up with Shirley Nannini to take the Doubles Flight A Championship.

Wigglesworth, Uvodich, Nannini, and Edee Madsen represented UW-L at the National AIAW Badminton Championships in Natchitoches, Louisiana. UW-L was the only team in the Midwest to place, taking the number four spot with 29 points.

Wigglesworth was elected by tourney participants as student representative on the National Badminton Committee to set up next year's tournament. This is the first year a student will serve on this committee.

The gymnastics team, coached by Sheila Walker, finished the season in third place at the Conference Championships. In the Region "A" Championships, the women took third in advanced and fourth in intermediate competition.



UW-L Roonies were victors in both WWIAC and Midwest AIAW Championships and went on to national competition.



alumni newsmakers alumni newsmakers alumni newsmakers alumni newsmakers



1911-1920

Hazel (Hansen) Ryan, '17, and her husband, Harold, send their greetings to classmates and friends. They reside in Rockford, Ill.

Helma E. Kuehn, '18, retired from teaching at the Franklin High School in Seattle, Wash. in 1956. She now resides in Reno, Nev.

Dr. Louis E. Kulcinski, '18, has presented Murphy Library with several valuable texts from his private collection. Included are a rare 1862 publication on physical education, a first translation of Galen's Hygiene, a 1923 text on the practice of medicine, a 1931 book about the Olympic Games and copies of Dr. Kulcinski's dissertation on "The Relations of Intelligence to the Learning of Fundamental Muscular Skills." A special book plate acknowledging Dr. Kulcinski's gift has been placed in each volume.

1921-1930

Henry Splitter, '22, is carrying on with his thirty-year Cultural History-Folklore project at UCLA.

Marcell (Lapitz) Kessel, '26, has a son who is a doctor, a son who is a junior high science teacher, and a daughter who is a graduate of Northwestern and plans to become a children's story writer.

Frances M. Kidd, '28 and '42, has been enjoying her retirement spending time gardening, reading, travelling and being of service to others. She resides in Minneapolis, Minn.

Margaret (Heggy) Milbee, '28, retired in 1975 after teaching third grade in Fort Wayne, Ind. for 14 years. She now resides with her husband, Neil, in Stuart, Fla.

1931-1940

Loretta (Panke) Walling, '31, is still a travel bug. In her most recent trip she visited the Greek Islands and Mexico.

William Reuter, '32, is living at 1100 Curlew Rd., Dundedin, Fla. and would like to hear from anyone from the class of 1932 living in the area.

Clayton Biddle, '32, and his wife, the former **Doris Schutter, '30**, are enjoying their retirement in the South.

Ruth J. James, '33, retired in June after 42 years with the recreation division of the Milwaukee Public Schools.

Vance A. Sichler, '34, has retired from the University of Washington after 27 years as Medical Buyer at the University hospital. He now resides in San Diego, Calif.

Annadel Wile, '34, officially retired from government work in 1972 but has been working most of the time since on contract with her former publishing company. She is responsible for the cataloging and indexing of government documents recently classified under the Freedom of Information Act.

William Schwoegler, '35, has retired as South Milwaukee's recreation director. He is a member of the South Milwaukee, Wisconsin, and National Education associations. He recently received a community appreciation award from the South Milwaukee Jaycees.

Vida M. Delton, '40 and '52, resides in Watertown where she is a substitute teacher, after having retired in 1973.

1941-1950

Margaret H. Schmidley, '41, is a counselor at South High School in Sheboygan.

Lois (Lawson) Higley, '42, is manager of the Rawlins-Carbon County Chamber of Commerce. She is also president of the Wyoming Chamber of Commerce Executives.

Margery (Hughes) Rittmann, '42, is teaching in the physical education department of the Warwick Veterans Memorial High School in Warwick, R.I.

Lois Nelson, '43, has been appointed coordinator of the newly created La Crosse County Child Support and Paternity Agency.

Grace (Foxwell) Kassilke, '43, resides in Madison where she does some volunteer teaching at the Madison Opportunity Center, a sheltered workshop for the handicapped.

Majorie (Brandt) Kerr, '43, has taught education for 23 years and is in her 13th year at Rusch Junior High School in Portage.

Rita (Finley) Knoble, '47, resides with her husband Clayton in Gays Mills. They have seven children, two who are graduates of UW-La Crosse and one who is currently enrolled.

Richard Grosse, '48, is presently a school psychologist in Ft. Lauderdale, Fla.

Clare Eddy, '48, is president of the Wisconsin Association of Life Underwriters. He resides in Beloit.

Jean (Pennebaker) Bess, '48, is Dean of Students at Shimer College, Mt. Carroll, Ill.

Belva (Brahmer) Yeske, '49, lives in New Berlin with her husband who is employed at E-Z Painter as vice president of manufacturing. They also own two unpainted plaster shops in Milwaukee.

Donald "Chick" Meinert, '49 and '70, is chairman of the Greater La Crosse Area Chamber of Commerce Public Relations Committee.

Maurice Ness, '49, is teaching at Bad Nauheim American School in Germany. He has also taught in the Phillipine Islands in addition to Wisconsin schools. His wife is the former **Nancy Santos, '66**.

1951-1955

William Heald, '51, is head golf professional at Riverside Golf Club and is president of the Professional Golfer's Association of America-Illinois Section. He was voted the Professional Golfer of the Year-Illinois in 1975. His wife, the former **Margo Gikling, '51**, is Media Center Director at Nixon School, Westchester. They reside in Riverside, Ill.

Gjeruld Thompson, '51, is the middle school principal in Monona. His wife, the former **Mary K. Paynter, '51**, is teaching in the Madison public schools.

Bill Knapton, '52, is head basketball coach, golf coach, and assistant football coach at Beloit College. He has been named the school's athletic director and will continue with his teaching and duties as chairman of the department of health, physical education and recreation.

Mary (Nenadich) Young, '52, resides in Minnesota with her husband, Bill, and their two daughters. She officiates girls volleyball and basketball games.

Gordon Ness, '52, is project director of Co-operative Educational Service Agency #12 in Portage. His wife, the former **Lois Root, '52**, is teaching at Westside Elementary School in Mauston. She was selected as outstanding elementary teacher of the year in 1975. The couple resides with their three sons in Mauston.

Nancy (Stoekman) Sternberg, '53, spent the past three years in Europe where she taught in the PREP program in Frankfurt, Germany while her husband taught in American High School. They now reside in Milwaukee.

1956-1960

Bruce L. Boegel, '57, is the vice president of sales for the Orion Corp. in Grafton and has been named to the board of directors. He resides in Mequon with his wife and their three children.

Ray Nelson, '57, is Associate Dean of Academic Affairs at Northland College, Ashland. He is also on the Ashland Unified School District Board. He resides in Ashland with his wife, Jane, and their two sons.

Betty (Lindberg) Nicka, '59, has been a dance teacher at Madison East High School for the past eleven years. She resides in Madison with her husband, John, and their daughter.

Patricia (Donnick) Smith, '59, resides in Ely, Minn. with her husband, Paul, and their two sons. He is with the U.S. Forest Service. They also own a ski shop in Ely. She enjoys bicycling, cross-country skiing, backpacking, canoeing and coaches high school tennis. She recently competed in the American-Birkegeiner Cross-Country Ski race at Telemark, finishing with a time of 4:34 for the 35 mile race.

Richard D. McCormick, '59, is Social Services Supervisor with the Wisconsin State Bureau of Probation and Parole. He is now in the La Crosse District where he resides with his wife and two children. She is Director of Medical Social Services for Gundersen Clinic, Ltd. and La Crosse Lutheran Hospital.

Carlton R. Caffisch, '60, is presently working on his doctorate in medical science at the University of New Mexico Medical School.

Dianne L. (Temp) Erickson, '60, resides in Aurora, Minn. with her husband and family. He is assistant chief geologist with the Minnamax Project, AMAX Exploration, Inc.

Tom Gauerke, '60, is the head track and cross country coach at Grosse Pointe North High School in Grosse Pointe, Mich. Since he took the position he has won 12 conference championships, 10 regional championships and 2 state titles.

Merlin E. Huber, '60, resides in Onalaska with his wife, Carol, and their five children. He is the owner and manager of Mississippi Valley Coating and Painting Co.

David D. Jenkins, '60 and '66, is an Assistant Professor of American history at the University of Wisconsin Center-Barron County, Rice Lake. He is serving as the Bicentennial Coordinator for the Barron County Center and is also representative on the Association of University of Wisconsin Faculty State Executive Committee.

1961-1965

Florence T. Malizola, '61, completed the requirements for the Ed.D. degree in December of 1974 at the University of North Carolina, Greensboro.

Allan Rupnow, '61, is coordinator of the elementary physical education program for the department of health, physical education and recreation at Iowa State University, Ames, Iowa. His wife is the executive secretary to the athletic director at ISU.

Ron Buchholz, '62, teaches English, is assistant basketball coach, and advisor to the annual and newspaper staffs in Monticello.

Max N. Morrison, '62, is president of the Wooster Parks and Recreation Commission.

Robert Garfield, '62, has been promoted to Assistant Superintendent of Schools in Chilton. He and his wife, the former **Gayle Luebke, '61**, have three children and reside in Chilton where she is a substitute teacher.

David C. Spencer, '62, is an Assistant Professor of Labor Studies, Indiana University. He is also Statewide Program Coordinator and Coordinator of Labor Education Summer Schools.

Kay Kjome, '63, has been residing in Denver, Colo. for the past eleven years. She is a technical sales representative for Lederle Diagnostics.

Leta (Dvorak) Kolvenbach, '63, is a physical education teacher at Webster Transitional school. Her husband, Eugene, works in the main post office in Milwaukee. Their daughter, Elizabeth Ann, was born January 27.

Barry Dellenbach, '63, and his wife, the former **Jolene Glenz, '62**, reside in Manhattan Beach, Calif. with their three sons. He is Western Regional Sales Manager for Fortin Laminating Corp. She is teaching hearing handicapped children in San Pedro.

WANTED!



If you know the whereabouts of any of the following members of the classes of '65 and '66, please contact the Alumni Office immediately. We don't want them to miss out on their class reunion this coming fall.

1965

Amundson, Judith Ann.
Anderson, Shirley Ellen
Choi, Jung Kwan
Cook, Lavonne Mildred (Spiers, Mrs.)
Egert, Anne Mariette (Nichols, Mrs. Fred C.)
Erickson, Dorothy Amelia
Garbe, Linda Elizabeth
Johnson, Alice M. (Smith, Mrs.)
Kubiak, Carol Jean (Cole, Mrs. Robert F.)
Maina, Eliud Wanjohi
Mierzwa, Judith A. (Gerdes, Mrs. Charles E.)
Negri, Jacqueline Lyla (Mason, Mrs.)
Rohrer, Carrie
Thornton, Marsha Jo (McGuliffe, Mrs.)

1966

Bourne, Phyllis Jeanette (Bernau, Mrs. Roland F.)
Clark, Doris Ann (Ewing, Mrs. Douglas)
Ezell, James William
Feldbruegge, Sue Ellen (Dussault, Mrs. James)
Frisch, Lawrence Arthur
Hansen, Roger Dean
Hauer, Peggy Jane
Kienzle, Gregory Joseph
Knutson, Kaye Sharon
Lamp, Carol Louise
Markos, Thomas G.
Nielson, Bruce K.
Olson, Ruth Ann (Freitag, Mrs.)
Persaud, Motee Lall
Peterson, Carol Joyce (Zahrte, Mrs.)
Raatz, Gerald George
Ross, Robert Jay
Scarseth, Clare Louise
Shields, Jon A.
Walker, Margaret Anne
Wiggins, Carol Lee (Olson, Mrs. David S.)
Zeinemann, Barbara (Jumes, Mrs.)

Gerald W. Niedfeldt, '64, is a mathematics instructor at Inver Hill Community College, Inver Grove Heights, Minn.

Edward Statts, '64, is city personnel director in Tomah, where he resides with his wife and their three daughters.

Ronald A. Henry Jr., '65, is with the department of biology at St. John's University in Collegeville, Minn. He resides in St. Cloud, Minn.

William D. Weigel, '65, has received his M.A. degree in chemistry from St. Joseph College in West Hartford, Conn. He is presently a materials engineer with Kaman Aerospace Corp. of Bloomfield, Conn. and is residing in New Britain.

Helen (Goodall) Hawkinson, '65, resides with her husband in Williams Bay where he owns Hawk's Auto Parts.

Nikki A. Assman, '65 and '69, has been appointed editor of the Indian Journal for Health, Physical Education and Recreation. She is an assistant professor of women's physical education at Ball State University in Muncie, Ind.

Patricia (Reis) Morse, '65, resides in Oakland, Calif. with her husband and son. She received her masters degree in counseling and has a private practice. She also teaches Hatha Yoga at the College of Alameda.

William Heineke, '65, resides with his wife, Betty, and their two children in Whitefish Bay where he is a psychologist. His wife teaches school.

Larry Dittman, '65 and '69, is Director of Development at the University of Wisconsin-La Crosse. His wife, the former **Amelia Lochner, '73**, is Academic Advisor to the College of Education at the university. They reside in Onalaska.

Edward L. Atherton, '65, is a supervisor at Ford Motor Co., Louisville, Ky. He resides with his wife, Patricia, and their two daughters.

1966-1969

John McCreight, '66, is a mortgage officer at the Midwest Federal Savings and Loan in Minneapolis and executive vice president of the Minneapolis Jaycees.

Claudette (Crook) Cherniss, '66, is employed by State Compensation Insurance Fund in San Diego, Calif. as a claims adjuster. Her husband, Tom, is a salesman for Atlantic Richfield Company.

Mike Spencer, '66, is head basketball coach and physical education instructor at the UW Center-Fox Valley in Menasha. He resides in Neenah.

Joan (Jarchow) Romanini, '67, is working in the financial management area for Social Security in Baltimore, MD. She is presently a fiscal management analyst. Her husband Lawrence is a computer programmer for the C & O-B & O Railroad in traffic statistics.

Phillip L. Johnson, '67, is operations supervisor of data processing at Chrysler Outboard Corp. in Hartford.

Richard J. Carey, '67, has studied a year in France, a summer in Guadalajara, Mexico and audited courses at the University of Arizona since his graduation. He now resides in Tucson, Ariz.

Gary E. Lehman, '68, resides with his wife, Diane, and their daughter in Golden Valley, Minn. where he is an agent with Allstate Insurance.

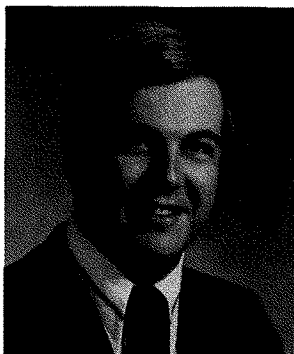
Loren Danke, '68, is teaching and coaching football and track at Jefferson. His wife, the former **Sally Bentzien, '67**, teaches and coaches synchronized swimming at Waukesha South. Their son, Brett, was born on February 14, 1975.

Thomas W. Adams, '68, and his wife, Sue, reside in Arcadia. They are the proud parents of a baby girl, Rachel Rae, born January 5.

Michael M. Laueremann, '68, is a Lieutenant in the Navy and is with Training Squadron twenty-seven, serving as assistant maintenance officer and flight instructor.

Marty J. Juel, '68, is employed as director of public relations and development at St. Nicholas Hospital, Sheboygan. He had served as director of public relations at St. Francis Hospital in La Crosse for seven years. His wife, **Jeanine Juel, '69**, was a personal banking officer at First National Bank in La Crosse.

Karen Kirch, '68, is a physical education instructor and head girl's gymnastics coach at Washington Park High School in Racine.



James Leonhart, '68, is vice president of the United States Jaycees and chairman of the board of the Wisconsin Jaycees. He is a candidate for president of the national organization. Leonhart is also a school administrator at Delaven. His wife, the former **Constance Kay Boebel, '68**, is teaching part time.

Dave Juneau, '69 and '72, is manager of supply and distribution for Autotronic Systems, a gasoline marketing company in Houston, Tex. He resides in Houston with his wife, the former **Debbie Englund, '72**, and their children, Jason and Ashlee Joy born November 4.

John C. Kaczmarek, '69, is practicing law in Fort Lauderdale, Fla.

Jack A. Miller, '69, is director of the audiovisual system at Viterbo College in La Crosse. He is also a career counselor in the placement office.

Paula (Hanson) Penning, '69, resides in Shell Lake with her husband.

Michael F. Engh, '69, resides in Hopkins, Minn. with his wife Carol. He is presently a commercial district sales manager for the Speed Queen Co., Ripon, and recently took second place in a national sales contest.

Jane F. Oberbrunner, '69, taught for a semester in Sydney, Australia and has returned to teach in Milwaukee.

1970

Thomas F. Curran, '70, received his masters and Ph.D. from Michigan State University and is teaching in the school of social work at Florida State University, Tallahassee, Fla.

Roger Heath, '70, is the vice president and chief executive officer of the Ferrysville State Bank.

William J. Peterson, '70, has received his masters degree in education with an emphasis in secondary school administration from Winona State College.

John Medinger, '70 and '72, is substitute teaching and is assistant manager of Don's Texaco in La Crosse.

Dwight Hibicke, '70, is teaching physical education in McHenry, Ill. He also writes a weekly feature article for the school district which is printed in the *McHenry Plaindealer*. He resides with his wife and their three children in McHenry.

Peter DeCicco, '70 and '72, is the director of counseling for the Essex County Office of the Employment and Training Administration in Newark, N.J. He resides in Maplewood, N.J. and is working on his doctorate at Rutgers University.

Gary Klug, '70 and '73, has a teaching assistantship in the physical education department at Washington State University in Pullman, where he is working on his Ph.D. in exercise physiology. His wife, Marilyn, is working on her Ph.D. in counseling at the University of Idaho, Moscow, Idaho.

David L. Holcomb, '70, resides with his wife and daughter in Canandaigua, N.Y. where he is director of parks and recreation. He has been elected to serve a second term as president of the Genesee Valley Recreation Parks Society.

James Zuckerman, '70, is in his final year in the military, still teaching physical education at the United States Military Academy, West Point, N.Y. His wife is the former **Nancy Lee Jung, '69**. He has completed a masters in guidance and counseling.

Daniel B. Watson, '70, received his law degree from Marquette University in 1974 and is presently a partner in the law firm of Doyle and Watson, La Crosse.

1971

Paul V. Young, '71, is attending the University of Washington. He resides in Washington with his wife.

Sister Ann Weibel, '71, is the Secretary General of the Franciscan Sisters of Perpetual Adoration in La Crosse. She is also part time instructor in Clinical Medicine in the Medical Record Administration Program at Viterbo College.

Sally (Fenske) Rix, '71, is teaching sixth grade at Sioux Trail Elementary School in Burnsville, Minn.

Ruth E. Witek, '71, is employed by La Fourche Valley Enterprises of Donaldsonville, La. as sales manager and programming assistant.

Barbara K. (Harkheimer) Neisis, '71, resides in Coon Rapids, Minn. with her husband, Chris, and their two children. Their son, Michael Wade, was born March 4.

John Swendrowski, '71, is coaching football at Wisconsin Rapids Assumption in Wisconsin Rapids.

Lani (Schilling) Krumwiede, '71, is a mechanical instructor of jet-engine mechanics at Chanute Air Force Base near Champaign, Ill. Her husband, Ed, is a salesman of Bestline products in Wisconsin and Illinois. They reside in Ludlow, Ill.

Ken R. Holzmann, '71, is a Navy lieutenant in Jacksonville, Fla. He flies helicopters and is legal officer of his squadron. His wife, the former **Mary Kay Oswald, '71**, is supervisor of the commercial loan department of a small bank.

Marvin A. Leisso, '71, is employed as a realtor by Hein-Eilertson, Inc. He resides in Onalaska.

Patricia (Maslowski) Heim, '71, is with the law firm of Edwards, Becker and Lynch Ltd. in La Crosse. She has been appointed to the Wisconsin Council on Criminal Justice (WCCJ) Special Study Committee on Criminal Justice Standards and Goals.

Dona Salske, '71, is assistant director of admissions at the University of Wisconsin-Whitewater. In addition to nearing completion of her masters, she is field director for the Miss Wisconsin Pageant.

Mary Ormson, '71, is a counselor at UW Center-Waukesha. She resides in Greenfield.

Michelle (Mush) Kegel, '71, is employed as the administrative assistant in institutional research to Dr. Harvey Haaluss, Director of Research at Northland College in Ashland.

Frank Fundrum, '71, is an agent for Prudential Insurance Co. He was selected as a delegate to the company's Career Development Seminars in Minneapolis. He resides with his wife and child in Slinger.

1972

Kay E. Froehlich, '72, is teaching physical education and coaching volleyball, badminton and cheerleaders in the Arlington Heights school district. She resides in Palatine, Ill.

David Petheram, '72, is employed in the inventory control office by White Form Equipment in Charles City, Iowa.

Kenneth J. Becker, '72 and '73, is teaching in the Milwaukee public school system.

Brent T. Hanson, '72, is the sales manager of Frank Oechslin and Co. in North Riverside, Ill. The firm is a wholesale distributor of foliage plants.

Paul A. Harris, '72, is laboratory director for Davy Water Facility Laboratory in La Crosse.

Gregg Underheim, '72 and '73, is employed by Hutson Advertising Agency in La Crosse.

Harold Wiersgalla, '72, resides in Beloit where he is a teacher at Beloit Turner.

Kristine K. (Jensen) Quandt, '72, is teaching sixth grade at Maplewood Elementary School in Indianapolis. She resides with her husband, David, and son in Danville, Ind.

Jerome Ditlefsen, '72, is employed by S.S. Kresge Co. as assistant manager at K-Mart in Columbus, Neb. His wife, the former **Linda Luoma, '72**, is a teaching assistant at Platte Community College in Columbus.

Andrew Blaha, '72, has been accepted into the U.S. Air Force pilot training and is stationed at Reese Air Force Base in Lubbock, Tex. After completing training he and his wife, Debbie, plan to return to the Milwaukee area.

Frank Stetzer, '72, has received his masters degree in geography from the University of Iowa.

Douglas B. Lybeck, '72, resides in Moorhead, Minn. where he is Superintendent of Recreation.

Charles J. Stevens and his wife, the former **Debbie Lulewicz, both '72**, reside in Madison. He is a service advisor at John Zimbrick Buick and she teaches physical education at Madison LaFollette High School.

1973

Timothy Brown, '73, is employed by J.C. Penney and is doing his graduate work at the University of Minnesota. He resides in Caledonia, Minn.

Roger Esser, '73, was awarded the degree of Master of International Management from American Graduate School of International Management in Glendale, Ariz.

Susanne Felber, '73, is admissions counselor with the University of Wisconsin-Eau Claire.

Gary Larson, '73, is employed by City of Commerce as a salesman selling industrial insulation. His wife, the former **Christine Pasch, '73**, is a data control clerk for International House of Pancakes regional office. They reside in North Hollywood, Calif.

Suzanne M. Bartels, '73, is an instrumental music director and assistant girl's basketball coach at St. Bernardo High School in Breda, Iowa.

Edward Wellner, '73, received his masters degree in statistics from the University of Wisconsin-Madison.

Teresa Cassidy, '73, has returned to the U.S. after working with the Peace Corps in the Philippines since her graduation.

Tom Davenport, '73, resides in La Crosse with his wife, the former **Barbara Nerison, '73**, and their daughter. He is employed by Otto-L-Kuehn Co., a food brokerage firm.

Gene G. Wigdahl, '73, is the manager of the Commodore Hotel and Motor Inn in Omaha, Neb. He is active in civic and business clubs concerned with the need for more tourist and convention trade.

1974

Glen Copper, and his wife, **Karen, both '74**, reside in West Allis. He manages a twin movie theatre in Racine and she writes and coordinates radio ads for WRIT and WBCS radio stations in Milwaukee.

Carl Swanson, '74, is an apprentice with the Milwaukee Ballet Co.

Herbert Scepanski, '74, is working on his masters degree in geography at the University of Wisconsin-La Crosse. He is also county volunteer coordinator of group and foster homes. He and his wife, Mary Kathleen, reside in Onalaska.

Beth Killian, '74, is employed by the Arcadia Public Schools as Title I teacher. She teaches remedial reading and math. She is also in the masters program at the University in Winona for remedial reading.

John Forsythe, '74, and his wife, the former **Debbie Huebner, '74**, are both employed by the Waupun public schools. He teaches high school geography and coaches football and basketball and she is an IMC secretary.

Odd "Sandy" Meyer III, '74, resides in Chicago where he is employed as a life underwriter for Equitable Life.

Kathleen E. Shepardson, '74, is attending graduate school at the University of Wisconsin-La Crosse.

1975

John W. Hintz, '75, is an Army second lieutenant and is stationed with the 9th Infantry Division, Fort Lewis, Wash.

Charles Erickson, '75, is the recreation director for the City of Mosinee.

David C. Zielke, '75, has graduated from the Western Airlines Flight Attendant College at Los Angeles International Airport and is now a Western flight attendant.

Harold Wheeler, '75, is a Regular Army Second Lieutenant and is stationed with the 82nd Airborne Division, Fort Bragg, N.C.

Pam Elmer, '75, is teaching physical education at Monticello.

Ray Waldie, '75, is a commodities representative at a firm in Chicago. His wife, the former **Marcy V. Oncken, '68**, is a substitute teacher in Kenosha.

Scott Ott, '75, is attending umpire's school in Florida. After finishing at the school conducted by National League umpires, Scott will be assigned to the minor league.

James Fuhrman, '75, is teaching general math, advanced math, and Algebra I at Loyal.

Suzanne Fauver, '75, resides in Friendship where she is teaching seventh grade.

Deanna (Pfaff) Fischer, '75, resides in Prairie du Chein with her husband, Tom. She is teaching second grade at St. Gabriels and he is employed at Fischer's Savory Cafe.

Tom J. Stephany, '75, is the administrator of parks and recreation at Oak Lawn, Ill.

John P. Wais, '75, is a sales representative for Heileman's Brewery. He and his family reside in La Crosse.

Signe Hanson, '75, is a medical technologist at Stoughton Hospital in Stoughton.

Marriages

Connie (Brenner) Miner, '57 to Robert Bayer on April 19. He is an engineer for McDonald Douglas. They reside in Tristin, Calif.

Donna Haugen, '67, to Jim Gregar on December 20 in La Crosse. He teaches distributive education at Holmen High School.

Kathleen Metcalfe to **Gary Bendlin, '67**, on March 1. They reside at Spangdahlem Air Force Base, West Germany, where he is a Captain F-4 Phantom pilot in the 81st Tactical Fighter Squadron.

Susan Rybar, '70, to Les Chambasian on July 26. She teaches physical education at Wm. Horlick High School while he teaches English and social studies at Starbuck Junior High School, both in Racine.

Susan (Altschull) Overlee, '70, to David Saigger on November 2. She legally changed her name to her stepfather's (Overlee) in 1974. The couple resides in Rapid City, Mich.

Janet Knauth, '72, to Michael McGrath on June 15, 1974. The couple resides in Nashville, Tenn., where he is a third year law student at Vanderbilt University. She is a teacher at St. Ann's Parochial School.

Frances Skoug to **Darrell Broten, '73**, on December 20. He is a science and psychology teacher in the Blair Public Schools and she is a business education teacher. They reside in Blair.

Mary Rose Winke, '74, to **Michael Strasser, '75**, in September. The couple resides in Onalaska. He is a graduate assistant at the University of Wisconsin-La Crosse while working toward a masters degree in business administration. She is employed in a pediatric dental office.

Sarah Flesch, '74, to James Barutha on January 7 in Platteville. The couple resides in Columbus, Ga. He is stationed with the U.S. Army at Fort Benning.

Carol Schanke to **Kenton D. Miller, '74**, on September 28 in Madison. He is a math teacher and track coach at Valders High School. They reside in Manitowoc.

Barbara Corbelle to **Keith Ogren, both '74**, on December 13 in Racine. He is employed as a personnel consultant with Graduate Personnel, Inc. of Minneapolis. She is a production assistant with Bachman-Anderson, Inc. They reside in Roseville, Minn.

Darlene Schmitz to **Donald Andrews, '74**, on December 12 in Kaukauna. He is a teacher in the Clinton School District and she is employed by World Wide Travel Bureau. They reside in Appleton.

Joan Wetterau, '74, to Jerold Baltus on December 20 in Stratford. He is employed by V & H Ford as a body mechanic and she is an art instructor for the Grafton Public Schools.

Barbara Rothering, '72 and **'74**, to **Timothy Poser, '74**, on November 15 in Brookfield. He is employed by Yahr Lange, Inc., Elm Grove and she is a learning disabilities teacher at Lowell School in Waukesha. They reside in Brookfield.

Janine Meyer, '75, to Thomas Skemp on January 24. He is stationed at the U.S. Navy submarine base, New London, Conn. The couple resides in Norwich, Conn.

Karen Luetzow to **Peter Schrock, both '75**, on December 27 in Milwaukee. The couple resides in Bemidji, Minn. where they are taking graduate courses at Bemidji State College.

Mary Beth DeVoe to **Scott Alan Heller, '75**, on February 19 in Monona. The couple resides in Sheboygan. He is employed at Bemis Manufacturing Co., Sheboygan Falls.

Cathleen Rownd to **Scott Elliot Sherin, '75**, on January 10 in Onalaska. They reside in La Crosse where she is a histology technician at St. Francis Hospital and he is a graduate student at the University of Wisconsin-La Crosse.

Kathleen Sternweis to **Phillip Long, '75**, on December 27 in La Crosse. They reside in La Crosse where she is a record room clerk for Skemp-Grandview Clinic and he is a general science teacher.

Marian Kay Boschert, '75, to **William Burke, Jr., '74**, on December 27 in La Crosse. The couple resides in Wauwatosa. He is director of Brookfield Parks and Recreation.

Lois Hammen to **Tom Ciske, both '75**, on January 10 in Little Chute. The couple resides in La Crosse, where she is a social worker. He is a recent graduate in education.

Gloria Center, '75, to John Brda on August 9. The couple resides in Mundelein, Ill. where they are both employed.

EDITOR'S NOTE: Due to an early printing deadline we were not able to print all notes received from members this spring. These late articles will appear in this summer's special edition of the ALUMNUS.



summer opportunities

*Inside-Out

(Ju. 16-17) 1 cr. 4:00 FS

A workshop in emotional health. Elementary school teachers and administrators will become acquainted with the physical, social and emotional problems of 8-10-year-old children through a series of 30 15-minute tapes.

*Self-Incorporated

(Ju. 30-31) 1 cr. 4:00 FS

A classroom television-film series (15 15-minute films) designed to help 11-13 year olds cope with the emotional and social problems which confront them.

*Health Education: The Community Approach

(Jn. 17) 5 CEU's Madison

*Human Sexuality Workshop

(May 17-18) 1.2 CEU's Viterbo

To achieve an understanding of human sexuality and how physiological factors affect it is the goal of this workshop.

*Health Maintenance: A Personal Responsibility

(May 8) 4 CEU's St. Francis Hospital

"Cardiovascular Considerations" is the theme of this one in a series of workshops on health maintenance. Current concepts about the heart, risk factors and protection will be dealt with

MASS COMMUNICATIONS

*Yearbook Workshop

(Ju. 19-23) 0 cr. 9:00-4:00 MTWTHF

*Newspaper Workshop I

(Ju. 19-23) 0 cr. 9:00-4:00 MTWTHF

*Newspaper Workshop II

(Ju. 26-30) 0 cr. 9:00-4:00 MTWTHF

MUSIC

*High School Pom Pon Workshop

(Jn. 21-25) 1 cr. 9:00-4:00 MTWTHF

*High School Flag Workshop

(Jn. 21-25) 1 cr. 9:00-4:00 MTWTHF

*High School Jazz Band Workshop

(Ju. 5-9) 1 cr. 9:00-4:00 MTWTHF

PHYSICAL EDUCATION

*Administration of Physical Education and Athletics

(May 22-Jn. 12) 2 cr. 8:00-5:00 S

*Square Dance for Teachers

(Ju. 12-16) 1 cr. 1:20-4:20 MTWTHF

Nationally known square dance caller Dick Jones will conduct many of the sessions.

*Athletics and the Law

(Jn. 21-Ju. 2) 2 cr. 1:20-4:20 MTWTHF

*Psychology and Theory of Coaching Football

(Jn. 28-Ju. 9) 2 cr. 1:20-4:20 MTWTHF

*Coaching of Women's Gymnastics

(Jn. 21-25) 1 cr. 9:00-3:00 MTWTHF

*Judging Women's Gymnastics

(Jn. 15-18) 1 cr. 9:00-3:00 TWTHF

*Teaching Rhythmical Gymnastics

(Jn. 15-18) 1 cr. 9:00-3:00 TWTHF

Olympic gymnasts Kathy Brym and Jane Jureau head a list of outstanding clinicians for this workshop. Compulsory, group and individual routines will be taught along with selected individual skills using balls, hoops, streamers and clubs.

*Prevention and Treatment of Athletic Injuries

(Jn. 21-Ju. 2) 2 cr. 8:00-12:00 Elkhorn MTWTHF

(Ju. 5-16) 2 cr. 8:00-12:00 Monroe MTWTHF

(Ju. 19-30) 2 cr. 8:00-12:00 Green Bay MTWTHF

(Aug. 2-13) 2 cr. 8:00-12:00 Rhinelander MTWTHF

*Mini-courses in Life-time Sports

(Jn. 21-Ju. 2) 2 cr. 1:00-5:00 Elkhorn MTWTHF

(Ju. 5-16) 2 cr. 1:00-5:00 Monroe MTWTHF

(Ju. 19-30) 2 cr. 1:00-5:00 Green Bay MTWTHF

(Aug. 2-13) 2 cr. 1:00-5:00 Rhinelander MTWTHF

PHYSICS

*Exploring our Solar System (Part I)

(Jn. 15-Ju. 1) 1 cr. 7:00-10:00 TTH

*Exploring our Solar System (Part II)

(Ju. 6-22) 1 cr. 7:00-10:00 TTH

PSYCHOLOGY

*Introduction to Teaching with Distar: Reading Levels 1,2,3

(May 7 & 14, 5:00-10:00) (May 8 & 15, 9:00-5:00) 2 cr. Onalaska

SOCIOLOGY-ANTHROPOLOGY

*Introductory Sociology

(Jn. 15-Aug. 6) 3 cr. 9:50-10:50 MTWTHF

*Social Problems

(Jn. 15-Aug. 6) 3 cr. 8:40-9:40 MTWTHF

*Delinquency

(Jn. 15-Aug. 6) 3 cr. 8:40-9:40 MTWTHF

*Population and Food Supply

(Jn. 15-Aug. 6) 3 cr. 9:50-10:50 MTWTHF

*Introductory Anthropology

(Jn. 15-Aug. 6) 3 cr. 11:00-12:00 MTWTHF

SPEECH-THEATRE

*Systems of Conflict Management

(Jn. 21-Ju. 2) 1 cr. 1:30-4:30 MTWTHF

Participants will learn what to do when people, departments or organizations are at loggerheads. In addition, constructive handling of misunderstandings and rivalries will be examined. Students will also study communication as a means of solving interpersonal conflict and look at the role of consensus, majority rule, negotiation and arbitration.

ALUMNI ASSOCIATION MEMBERSHIP -- CLIP AND MAIL TODAY!

New Member - \$5.00

*Life Membership - \$75.00

Annual Renewal - \$5.00

*Family Life (Husband and Wife) - \$100.00

Name _____ Year Grad. _____

Spouse's Name _____ Year Grad. _____
(In case of Family Membership)

Address _____ City _____

State _____ Zip _____ *May be Paid in Installments

Alumnus

Friend

Faculty

Make Check Payable To: UW-L Alumni Association and Return To: Alumni Office,
UW-La Crosse, La Crosse, WI 54601

Moving?

New Address or Other Changes:

Name _____

Street _____

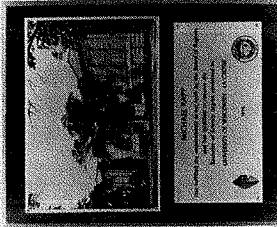
City _____ State _____ Zip _____

Please send us your new address two months in advance, if possible. Make other necessary corrections, such as name change, too.

Attach Original Address Label Here

ORDER

Your Personal Plaque



The wood plaque with bur-nished metal photoengravings depicts historic Main Hall and is inscribed with your name, degree and year of graduation. Cost is \$15 postpaid. Make check payable to UW-L Alumni Association.

\$ _____ for _____ plaques
(amount enclosed) (no.)

Alumnus' Name:

First Maiden

Last

Year Grad.

Mail Plaque To:

Name _____

Address _____

City _____ State _____ Zip _____

Return to: Alumni Office, UW-La Crosse, La Crosse, WI 54601

Alumni Office

University of Wisconsin-La Crosse

La Crosse WI 54601

ADDRESS CORRECTION REQUESTED
THIRD CLASS

Non-Profit Org.
U.S. POSTAGE

PAID

La Crosse, Wis.
P. I. 545

020950

ANN BATIKIS
1023 CRABTREE LANE
RACINE WIS 53406



What's "News" With You?

We welcome portrait type photos for the "Alumni Newsmakers" section.