

Yearly Assessment Report

Practical Nursing Certification (PNC)

Dr. Janet Philipp, Division Chair of Health Professions

Tasha Conley, Assistant Director Practical Nursing

Tasha Conley, Author

2010-2011

Brief Executive Summary

One of the key indicators of a nursing program is the first time pass rate on the National Council Licensure Examination (NCLEX). Over the last several years, the first time National Council Licensure Examination for Practical Nurses (NCLEX-PN) pass rate has been used as an assessment tool of the Practical Nursing Program. The NCLEX-PN has been utilized as a major assessment tool again this year. Although all objectives for the program's goal were not met, there continues to be great improvement. The program is on target to exceed the objective related to the NCLEX-PN (Goal 1 Objective 2) at the end of the calendar year.

This year, the assessment report will show more formative information on student benchmarking throughout the PN program. The other major assessment tool used was the Assessment Technologies Institute (ATI) Mastery Content Series and Comprehensive Predictor Examination. ATI is the NCLEX-PN preparation program that College of Saint Mary (CSM) uses. ATI offers standardized examinations that assess student knowledge in different content area including Fundamentals, Pharmacology, Nutrition, Obstetrics, Pediatrics, Mental Health, Leadership, and Medical-Surgical nursing. ATI also has a Comprehensive Predictor assessment that provides a predicted probably of passing NCLEX-PN. This examination includes questions from each of the content areas mentioned above. Other data that can be collected from the Comprehensive Predictor include sub-scale scores on the categories of the NCLEX-PN including coordinated care, safety and infection control, health promotion and maintenance, psychosocial integrity, basic care and comfort, pharmacological and parenteral therapies, reduction of risk potential, and physiological adaptations. The program allows the student to take two practice exams and two proctored exams per Mastery Content Series Exam and two practice and two proctored Comprehensive Predictor Exams. The student is required to get a benchmark of a level 2 after two attempts. Other services offered by ATI include an entrance examination (TEAS), Student Assessment Inventory, a Critical Thinking entrance and exit examination, and examination tutorials. Although the objectives related to the ATI were not met, data shows areas where the program can improve and ways to collect data in the future.

Mission and Purposes

Mission

The Practical Nurse Program is an educational program that supports the mission statement of CSM. The mission of this program is to foster a learning environment that prepares an individual for an entry level health care position by fostering learning that promotes growth of the student in the classroom, the clinical setting, and the larger community.

The program was started in May 2004 to provide the beginning culturally diverse nursing student an alternative one-year certificate program to the two-year Associate Degree nursing program. The program academic year begins and ends in May of each year. Six classes have completed the program.

Purpose

The one-year certificate Practical Nurse Program shall prepare graduates to provide safe, competent health care in a structured health care setting under the direction of a licensed healthcare practitioner.

Stakeholders

Identify your Program's Stakeholders here and how your Program impacts or is impacted by them:

Possible Stakeholders (check the ones that apply)	How Stakeholder Impacts or is Impacted by Your Program
<input checked="" type="checkbox"/> undergraduate students in the Practical Nursing Program	The PN students invest time and money in the program with the goal of obtaining a job as a licensed professional within the healthcare community. The attainment of a job is dependent on success in the program.
<input type="checkbox"/> graduate students	
<input type="checkbox"/> other Programs (name them here)	
<input checked="" type="checkbox"/> community constituents including all area healthcare settings and clients	With the current national nursing shortage, the Omaha healthcare community cannot function without the proper training of nurses, including practical nursing. The community depends on nursing programs to properly educate PNs for safe and effective care.
<input checked="" type="checkbox"/> accrediting bodies including the Nebraska State Board of Nursing	The Nebraska State Board of Nursing is responsible for ensuring every nursing program continues to meet the standards established in <i>The 2006 Regulations Governing the Approval of Nursing Programs in Nebraska, Title 172, Chapter 97</i> . The pass rate on NCLEX-PN not only reflects the College of Saint Mary, but the state of Nebraska as a whole.
<input type="checkbox"/> Other	
<input type="checkbox"/> Other	

Goals and Objectives

Goal 1

The graduates of the PNC program will demonstrate knowledge needed to provide safe and competent care in a structured health care setting under the direction of a licensed healthcare practitioner.

Objective 1

The CSM NCLEX-PN first time pass rate at the end of 2010 will be 86.49%

Rationale

This goal supports the college's mission of academic excellence and scholarship and the college's purpose to educate women for professional careers. The **NCLEX-PN measures minimal level of competence necessary to practice safe and effective nursing and is a key indicator of the quality of a nursing education program**. The percentage picked in this objective is the average national NCLEX-PN pass rate from 2005-2009

Objective 2

The May 2011 graduates of the Practical Nursing Program will have a first time pass rate of 86.49% on the NCLEX-PN.

Rationale

This goal supports the college's mission of academic excellence and scholarship and the college's purpose to educate women for professional careers. The **NCLEX-PN measures minimal level of competence necessary to practice safe and effective nursing and is a key indicator of the quality of a nursing education program.** The percentage picked in this objective is the average national NCLEX-PN pass rate from 2005-2009.

Objective 3

86.49% of the PNC students who successfully complete each semester will score a Proficiency Level 2 or higher on each proctored exam in the ATI Content Mastery Series by the second attempt.

Rationale

The literature supports use of a computerized comprehensive assessment and review programs (CARP) to increase the NCLEX-PN pass rate. A student meeting the criterion for ATI Proficiency Level 2: is expected to readily meet NCLEX-PN standards in this content area, should demonstrate a level of knowledge in this content area that more than adequately supports academic readiness for subsequent curricular content, and should exceed minimum expectations for performance in this content area (ATI, 2009). The percentage picked in this objective is the average national NCLEX-PN pass rate from 2005-2009.

Objective 4

86.49% of the PNC students who successfully complete the program will score a 90% probability of passing NCLEX-PN on the ATI Comprehensive predictor by the second attempt.

Rationale

See Objective 2 rationale. The ATI Comprehensive Predictor assessment provides a predicted probability of passing NCLEX-PN value based on performance on an examination that combines questions from all Content Mastery Series. The percentage picked in this objective is an average national NCLEX-PN pass rate from 2005-2009.

Assessment Matrix

	Monthly State NCLEX- PN Reports	Quarterly State NCLEX- PN Reports	Graduate Demographic Data Spreadsheet	NCLEX-PN Pass Rate Trends Spreadsheet	ATI Content Mastery and Comprehensive Predictor Spreadsheet
Objective 1 NCLEX-PN pass rate at end of 2010	X	X	X	X	
Objective 2 NCLEX-PN pass rate for class of 2011	X	X	X	X	
Objective 3 ATI Content Mastery Series				X	X
Objective 4 ATI Comprehensive Predictor				X	X

Assessment Tools

Fill in this chart regarding the assessment tools your Program uses. Insert the names of the tools and then either check the boxes (where indicated) or insert the information requested.

Tool Name	Who Collects Data? (Position Title)	Who is Evaluated?	Assessment Procedure (Brief description)	Direct Measure? (check box)	Quantitative Measure? (check box)
Monthly State NCLEX-PN Reports	The Nebraska Board of Nursing forwards program information.	All College of Saint Mary educated PN candidates who wrote the examination for that month.	The number of first and repeat CSM students who wrote the examination are presented along with the number of students who passed and failed. If a student is unsuccessful on the NCLEX-PN categorical data is provided on the sub-categories where they were below, near, or at the passing standard.	X	X
Quarterly State NCLEX-PN Reports	The Nebraska Board of Nursing forwards program information.	All US educated PN candidates who wrote the examination nationally.	The national and Nebraska NCLEX-PN quarterly and rolling yearly pass rates are presented. More detail is given about all of the PN programs in Nebraska.	X	X
Graduate Demographic Data Spreadsheet	Tasha Conley, Assistant Director of Practical Nursing, centralizes data on one spreadsheet.	All US educated PN candidates who wrote the examination nationally.	The end of the calendar year and most current quarterly NCLEX-PN pass rate is presented for the country and state and compared to CSM rate.	X	X
NCLEX-PN Pass Rate Trends Spreadsheet	Tasha Conley, Assistant Director of	All graduates from CSM PNC	Data is collected through powercampus,	X	X

	<p>Practical Nursing centralizes data on one spreadsheet. Debbie Nugen, Registrar assists with some data collection.</p>	<p>program.</p>	<p>personal interviews, and Nebraska state reports and is placed on one spreadsheet. The data collected since 2009 includes: P or F on NCLEX-PN, # of attempt, quarter exam was taken, admission statistics, ESL, ethnicity, CGPA, fundamental grade, below areas on NCLEX-PN (if applicable), and other important data.</p>		
<p>ATI Content Mastery and Comprehensive Predictor Spreadsheet</p>	<p>Tasha Conley, Assistant Director of Practical Nursing and Joyce Baltz, Undergraduate Nursing Secretary</p>	<p>All students accepted into CSM PNC program.</p>	<p>Data is obtained from the ATI testing website and placed into one spreadsheet.</p>	<p>X</p>	<p>X</p>

Data Collection Timeline

Indicate with a check mark when you collect data related to each tool. Add columns or rows as needed.

	8/10	9/10	10/10	11/10	12/10	1/11	2/11	3/11	4/11	5/11	6/11	7/11	8/11	9/11	10/11
Tool 1	X	X	X	X	X	X	X	X	X	X	X	X	X	X	X
Tool 2		X			X			X			X			X	
Tool 3		X			X			X			X			X	
Tool 4	X	X	X	X	X	X	X	X	X	X	X	X	X	X	X
Tool 5			X		X			X		X		X			X

Results of Assessment and Resulting Actions

Goal 1: The graduates of PNC pProgram will demonstrate knowledge needed to provide safe and competent care in a structured health care setting under the direction of a licensed healthcare practitioner.

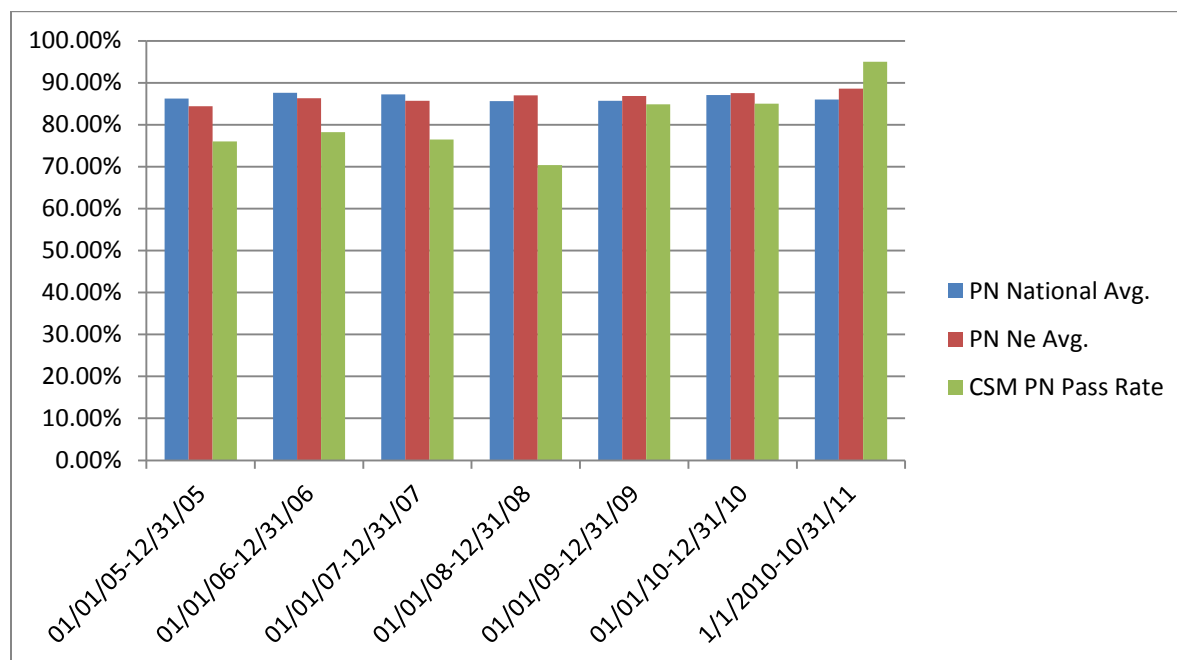
Objective 1: The CSM NCLEX-PN first time pass rate at the end of 2010 will be 86.49%.

Assessment Data Related to Objective 1

Table 1

Year	PN National Avg.	PN Ne Avg.	CSM PN Pass Rate	Taken	Passed	Failed	No. of PN Graduates
01/01/05-12/31/05	86.25%	84.42%	76%	25	19	6	5/2005: 30
01/01/06-12/31/06	87.61%	86.29%	78.26%	23	18	5	5/2006: 20
01/01/07-12/31/07	87.25%	85.69%	76.47%	34	26	8	5/2007: 40
01/01/08-12/31/08	85.62%	86.98%	70.37%	27	19	8	5/2008: 25
01/01/09-12/31/09	85.73%	86.84%	85%	33	28	5	5/2009: 27
01/01/10-12/31/10	87.06%	87.50%	85%	20	17	3	5/2010: 23
1/1/2010-10/31/11	86.00%	88.60%	95%	20	19	1	5/2011: 20

Graph 1



[Table 1](#) Control and click on hyperlink “Table 1” for data in this table or see separate attachment named “NCLEX Pass Rate Trends 2005-2011”.

Discussion of Assessment Data Related to Objective 1

Objective 1 not met. According to the data collected from 01/01/10-12/31/10 the pass rate for NCEX-PN at College of Saint Mary was 85%. This is the same percentage from 01/01/09-12/31/09. Although we were still under the national average at the end of the calendar year, it is a marked improvement from the last several years. A new PNC curriculum was presented to the State Board of Nursing and gained approval in 2011. This curriculum is an attempt to address deficits found when looking at the results of the students who were unsuccessful on the NCLEX-PN in the past. Some of this information was presented in the [2008-2009](#) (control and click on hyperlink “2008-2009” to view data or see separate attachment named “NCLEX results by NCLEX Categories”) assessment report. By filling these gaps, it is hoped that the NCLEX-PN pass rate will exceed the stated goals and objectives in the assessment report. Data on the NCLEX-PN will continue to be collected and analyzed both monthly and quarterly. This objective will continue to be used in the future adjusting the percentage according to the average national NCLEX-PN over the last 2-3 years.

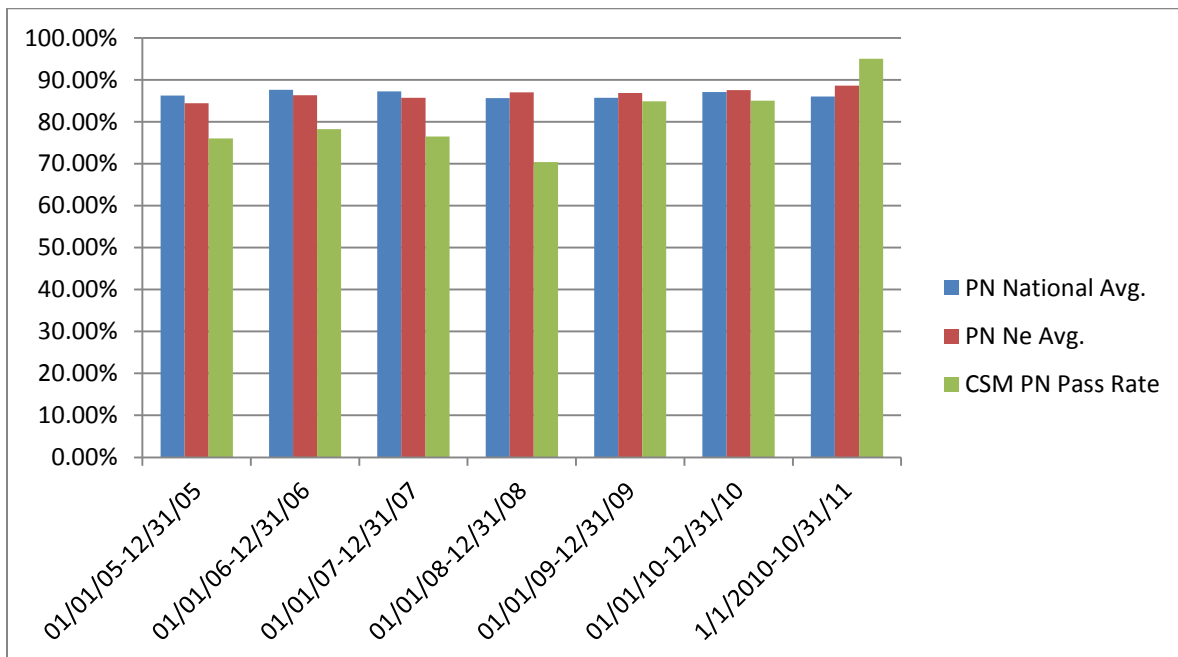
Objective 2: The May 2011 graduates of the Practical Nursing Program will have a first time pass rate of 86.49% on the NCLEX-PN.

Assessment Data Related to Objective 2

Table 2

Year	PN National Avg.	PN Ne Avg.	CSM PN Pass Rate	Taken	Passed	Failed	No. of PN Graduates
01/01/05-12/31/05	86.25%	84.42%	76%	25	19	6	5/2005: 30
01/01/06-12/31/06	87.61%	86.29%	78.26%	23	18	5	5/2006: 20
01/01/07-12/31/07	87.25%	85.69%	76.47%	34	26	8	5/2007: 40
01/01/08-12/31/08	85.62%	86.98%	70.37%	27	19	8	5/2008: 25
01/01/09-12/31/09	85.73%	86.84%	85%	33	28	5	5/2009: 27
01/01/10-12/31/10	87.06%	87.50%	85.00%	20	17	3	5/2010: 23
1/1/2010-10/31/11	86.00%	88.60%	95%	20	19	1	5/2011: 20
							09 class: 88.5%
							10 class: 81.8%
							11 class: 100%

Graph 2 (same as objective 1)



[Table 2](#) (same as objective 1) Control and click on hyperlink “Table 2” for data in this table or see separate attachment named “NCLEX Pass Rate Trends 2005-2011”.

Discussion of Assessment Data Related to Objective 1

Objective 2 met. The current data available from 01/01/11-09/30/11 shows the CSM pass rate at 95.00%, the May 2011 graduate rate being 100%, and the rolling from 10/01/10-09/30/11 NCLEX-PN pass rate at 86.96%. A new PNC curriculum was presented to the State Board of Nursing and gained approval in 2011. This curriculum is an attempt to address deficits found when looking at the results of the students who were unsuccessful on the NCLEX-PN in the past. Some of this information was presented in the 2008-2009 assessment report. By filling these gaps, it is hoped that the NCLEX-PN pass rate will exceed the stated goals and objectives in the assessment report. Data on the NCLEX-PN will continue to be collected and analyzed both monthly and quarterly. This objective will continue to be used in the future adjusting the percentage according to the average national NCLEX-PN over the last 2-3 years.

Objective 3: 86.49% of the PNC students who successfully complete each semester will score a Proficiency Level 2 or higher on each proctored exam in the ATI Content Mastery Series by the second attempt.

Assessment Data Related to Objective 3

[Table 3](#) Control and click on hyperlink “Table 3” for all data in this table or see separate attachment “ATI Scores Class 2011”.

	ATI Content Mastery Series							
Fall 10-Sp 11								
	Fund Su/Fa 10	Pharm Fa 10/Sp 11	Nutrition Fa 10	OB Sp 11	Peds Sp 11	MH Sp 11	MS Sp 11	Lead Sp 11
Tot Students	30	23	25	22	22	22	22	22
Successful Students	19	18	22	20	20	20	20	20
# Comptency 2 or >	14	10	18	20	19	20	20	18
Percentage	78.42%	55.56%	81.81%	100%	95%	100%	100.00%	90%

Well above goal

At goal

below goal

Table 4 Control and click on hyperlink “Table 4” (comparison to last year’s results) for all data in this table or see separate attachment “ATI Scores Class 2011”.

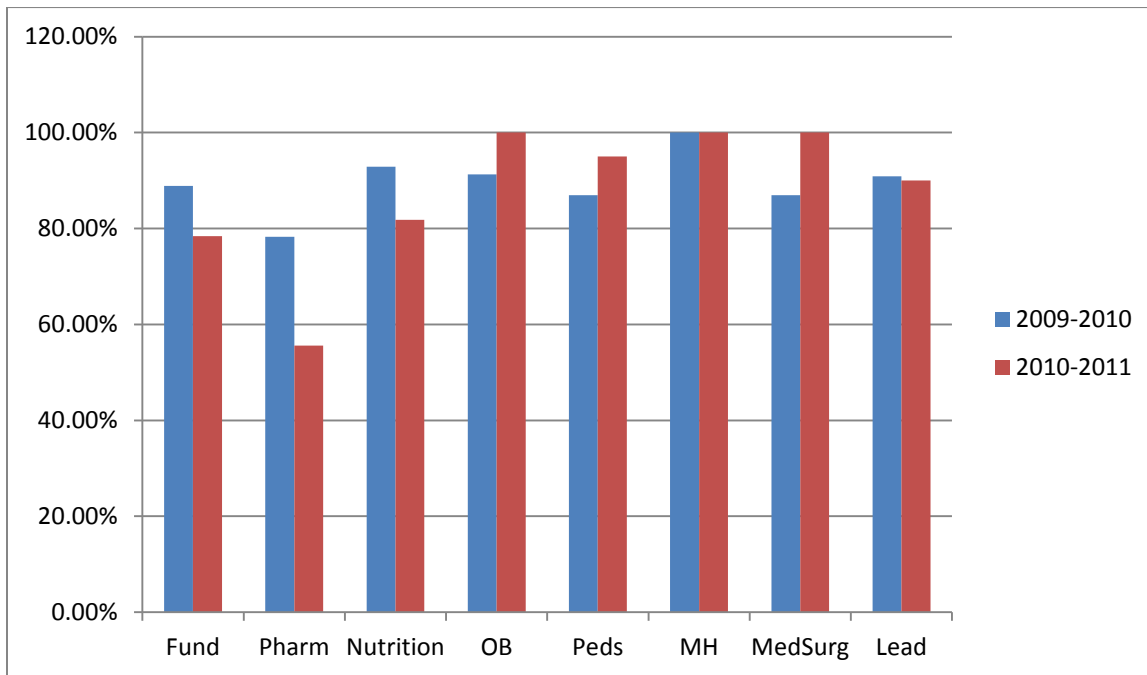
	Fund	Fund	Pharm	Pharm	Nutrition	Nutrition	OB	OB
	Su/Fa 09	Su/Fa 10	Fa 09/Sp 10	Fa 10/Sp 11	Fa 09	Fa 10	Sp 10	Sp 11
Tot Students	36	30	33	23	18	25	27	22
Successful Students	27	19	23	18	14	22	23	20
# Comptency 2 or >	24	14	18	10	13	18	21	20
Percentage	88.89%	78.42%	78.26%	55.56%	92.86%	81.81%	91.30%	100%

Peds	Peds	MH	MH	MS	MS	Lead	Lead
Sp 10	Sp 11	Sp 10	Sp 11	Sp 10	Sp 11	Sp 10	Sp 11
27	22	27	22	27	22	26	22
23	20	23	20	23	20	22	20
20	19	23	20	20	20	20	18
86.96%	95%	100.00%	100%	86.96%	100.00%	90.90%	90%

2009-2010
2010-2011

Well above goal
At goal
below goal

Graph 3 Comparison to last year’s results



Discussion of Assessment Data Related to Objective 3

Objective 3 not met. This objective was met for five of the eight proctored ATI Content Mastery Series exams. Similarly to last year, pharmacology was below the objective level. This is consistent with the information that was collected in last year's assessment report on [categorical areas](#) (control and click on hyperlink for all data in this table or see separate attachment) found to be a deficit for the students not successful on the NCLEX-PN over the last several years. Beginning in Fall 2011, pharmacology is 3 credit hours in the second semester (increase from 2 credits in previous years) and we will also focus on integration of pharmacology with disease process in the last semester. Fundamental content has also been rearranged in the new curriculum and will hopefully address this deficit. Nutrition is not heavily tested on the NCLEX-PN and is near the objective. It will be continue to be monitored over the next year and addressed as needed. It is important to note that medical surgical content went up to 100%. This is a large portion of the NCLEX-PN and the setting where LPNs are most likely to practice. Competence is needed to be successful on the NCLEX-PN and in practice. Discussion will continue on the use of a progression policy in the program as it relates to performance on ATI Content Mastery Series exams. Usage of the ATI Content Mastery Series results will continue to be used in future assessment reports.

Objective 4: 86.49% of the PNC students who successfully complete the program will score a 90% probability of passing NCLEX-PN on the ATI Comprehensive predictor by the second attempt.

Assessment Data Related to Objective 4

[Table 5](#) Control and click on hyperlink "Table 5" for all data in this table or see separate attachment "ATI Scores Class 2011".

Fall 10-Sp 11		
	Pred	
Tot Students	22	
Successful Students	20	
# Probability of 90% or >	17	
Percentage	85%	

Well above goal

At goal

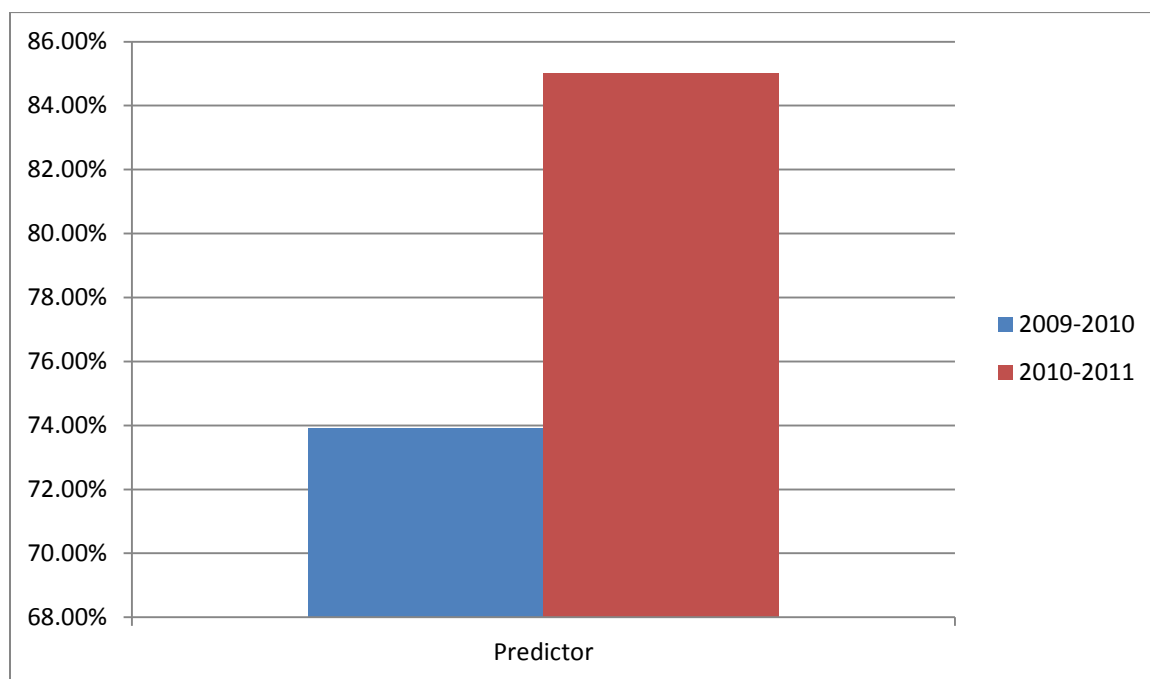
below goal

[Table 6](#) Control and click on hyperlink “Table 6” (comparison to last year’s results) for all data in this table or see separate attachment “ATI Scores Class 2011”.

	Pred	Pred
	Sp 10	Sp 11
Tot Students	27	22
Successful Students	23	20
# Probability of 90% or >	17	17
Percentage	73.91%	85%

2009-2010
2010-2011

Graph 4 Comparison to last year’s results



Discussion of Assessment Data Related to Objective 4

Objective 4 near, but not met. The percentage of students that performed at the desired proficiency was near, but below the percentage stated in the objective. An 11.09% increase in the number of students above the set benchmark is noted. Usage of the ATI Comprehensive Predictor results will continue to be used in future assessment reports with a possibility of setting benchmarks on the NCLEX-PN sub-scale results (not included in this report).

What has improved in your program based upon previous assessments?

- Current NCLEX-PN pass rate is above assessment goal, national average, and state average.
 - OB, Peds, and MedSurg ATI Mastery Content Series scores improved and above objective. These assessments are all given in the last semester of the program.
 - ATI Comprehensive Predictor scores improved and are near objective. This assessment is also given in the last semester of the program.
 - Curriculum change approved by Nebraska State Board of Nursing and implemented starting Summer 2011.
 - Experimental course PNC 181 LEVERAGING YOUR SUCCESS IN PRACTICAL NURSING taught Summer 2011.
-

Response to Previous Years' Assessment (Optional)

- The response from 2010 graduate survey was n=3 and from 2011 was n=6. This does not provide enough data for us to assess satisfaction with the program. I will be working with Ellen Jacobs and Pam Humphries on strategies to increase the number of PNC students that participate in the exit survey. Also work with Ellen Jacobs to have a section on exit survey that specifically addresses practical nursing specific resources (ie open lab hours and tutoring hours). As the program consistently remains above the NCLEX-PN national average the assessment focus will include student satisfaction.
-

Future Goals

Goal 1

The graduates of the PNC program will demonstrate knowledge needed to provide safe and competent care in a structured health care setting under the direction of a licensed healthcare practitioner.

Objective 1

The CSM NCLEX-PN first time pass rate at the end of 2011 will be 86.49% (This could change once 2010 and 2011 pass rate data is collected)

Rationale

This goal supports the college's mission of academic excellence and scholarship and the college's purpose to educate women for professional careers. The **NCLEX-PN measures minimal level of competence necessary to practice safe and effective nursing and is a key indicator of the quality of a nursing education program.** The percentage picked in this objective is the average national NCLEX-PN pass rate from 2005-2009.

Objective 2

The May 2012 graduates of the Practical Nursing Program will have a first time pass rate of 86.49% on the NCLEX-PN. (This could change once 2010 and 2011 pass rate data is collected)

Rationale

This goal supports the college's mission of academic excellence and scholarship and the college's purpose to educate women for professional careers. The **NCLEX-PN measures minimal level of competence necessary to practice safe and effective nursing and is a key indicator of the quality of a nursing education program.** The percentage picked in this objective is the average national NCLEX-PN pass rate from 2005-2009.

Objective 3

86.49% (This could change once 2010 and 2011 pass rate data is collected) of the PNC students who successfully complete each semester will score a Proficiency Level 2 or higher on each proctored exam in the ATI Content Mastery Series by the second attempt.

Rationale

The ATI is the NCLEX-PN preparation program that CSM uses. It offers standardized exams that assess the student knowledge in certain content areas. The literature supports use of a computerized comprehensive assessment and review programs (CARP) to increase the NCLEX-PN pass rate. A student meeting the criterion for ATI Proficiency Level 2: is expected to readily meet NCLEX-PN standards in this content area, should demonstrate a level of knowledge in this content area that more than adequately supports academic readiness for subsequent curricular content, and should exceed minimum expectations for performance in this content area (ATI, 2009). The percentage picked in this objective is the average national NCLEX-PN pass rate from 2005-2009.

Objective 4

86.49% (This could change once 2010 and 2011 pass rate data is collected) of the PNC students who successfully complete the program will score a 90% probability of passing NCLEX-PN on the ATI Comprehensive predictor by the second attempt.

Rationale

See Objective 2 rationale. The ATI Comprehensive Predictor assessment provides a predicted probability of passing NCLEX-PN value.

Objective 5

Seven of the eight sub-scale categories on the ATI Comprehensive Predictor will have a group score that correlates with a 90% probability of passing this content on NCLEX-PN on the first attempt.

Rationale

See Objective 2 rationale. The ATI Comprehensive Predictor provides statistical feedback on each of the sub-categories tested on NCLEX-PN.

Goal 2

The graduates of the PNC program will be satisfied with the PNC educational program according to the PNC Graduate Satisfaction Survey.

Rationale This goal supports the entire mission statement of CSM but focuses on academic excellence, regard for the dignity of each person; and attention to the development of mind, body and spirit.

Objective 1

At least 85% of the PNC graduates surveyed will express having educational goals beyond a PN certification.

Objective 2

At least 85% of the PNC graduates surveyed will state that the PNC curriculum prepared them to meet the program objectives at a minimum of 'Meets Expectations.'

Objective 3

At least 85% of the ASN graduates will state that the PNC program prepared them for beginning their practical nursing career.

Objective 4

At least 85% of the PNC graduates surveyed will state their level of overall satisfaction of the PNC program as 'Satisfied' or 'Highly Satisfied'.

Objective 5

At least 85% of the students will report using PNC specific resources (ie PNC 181, open lab hours, and tutor hours).

Objective 6

At least 85% of the students who report using PNC specific resources will state their level of satisfaction with the resources as 'Satisfied' or 'Highly Satisfied'.

Resource Needs

Consider an additional part-time or full-time faculty member. There is a large amount of content being taught by adjunct faculty.

Signature of Program Director, if she/he is not Assessment Report Author

Date

Academic Assessment Committee

Feedback on 2010-2011 Assessment Process for the ___ Practical Nursing Certification (PNC)_____ Program

Assessment is always a developmental process, so the main purpose of this constructive peer feedback is continuous improvement of our assessment processes at CSM. The first part of this form is simply a checklist, and the second part responds to specific criteria.

Primary reviewer: Please type name and date completed here **Mark Sand 15 Feb 2012**

Secondary reviewer: Please type name and date completed here

Checklist: A check indicates that the criterion is met.

1. Assessment Report clearly states the program's mission and purposes, which relate directly to CSM's mission.

2. Assessment Report states goals that flow directly from the mission and purposes of the program, as well as from the data collected from previous assessment efforts.

3. Assessment tools measure the achievement of the objectives and are as objective as possible.

4. Assessment methods are multi-dimensional, measuring attainment of goals in different ways.

5. The report is well-organized and formatted correctly

Directions to Reviewers: Please provide comments and feedback on any sections of the report within that section using a **blue for primary reviewer** and **green for the secondary reviewer**. After completing those comments please provide a summary below that addresses strengths or areas of improvement.

Topic that should be addressed either within the assessment report or in the summary include the following:

1. Program objectives are specific and measurable. They relate to the goal statements.
2. Are there any multi-year trends documented? If not, what multi-year trends might be examined in the future?
3. Data collected and assessment results reflect critical examination of information from the previous assessment report.
4. Assessment addresses the extent to which goals and objectives are being met.
5. Has improvement of quality resulting from past assessment activities been documented?
6. How are decision-making and future actions supported by evidence documented in the report?

SUMMARY COMMENTS

Primary reviewer:

Significant Strengths: The PNC program has shown very significant improvement in the one measure that really matters, the pass rate on the NCLEX-PN. The program has done a very good job of providing specific and measureable goals and objectives. Trends are shown for the years since the program was begun; they show the

maturity of the PNC program as it became an integral part of the larger nursing program. The data is well organized and given in clear and understandable form. Good to include the survey of graduates to gain additional insight into what students think of the program and their job prospects on graduation.

Recommendations: It would be good to explain why the number of graduates in the PCN program is different from the number of exams taken each year—does this count 2nd, 3rd tries, and so on? The goals stated only talk about the first-time pass rate. Now that the CSM pass rates are up to the levels of national and state pass rates, could the goal be raised? Since the main competition for our graduates comes from the graduates at other area programs, could the goal be set at a specific percentage (2%, say) above the statewide average pass rate? Just a thought.

Additional Comments (optional): Good exposition of the goals and objectives, the situation, and the improvement over time. This is a great example of why we do program assessment.

Secondary reviewer: [Susan Joslin](#)

Significant Strengths: This program is clearly using assessment data to improve its outcomes. The data collected is viable, and used to make improvement changes. Great work!

Recommendations:

The thought about increasing pass rates to above the national average would support CSM's mission of excellence. You are clearly going in the right direction and I think it would be do-able. This is a short program though, providing you less time to develop students, but your pass rates really improved this year so I think that is a great indicator. I would suggest for all students that have to take licensure exams that providing them with skills to reduce test anxiety would be beneficial. And related to student satisfaction about preparation, I would suggest getting additional information at a 3 or 6 month follow up. Their perceived preparation at the time of graduation has a lot to do with their sense of self-efficacy and other external factors.

Additional Comments (optional)

VPAA Comments:

This is an outstanding assessment report – truly a model for the campus. The data you have collected is clearly showing improvement and I think now looking at satisfaction is a perfect next step. Great work!!!