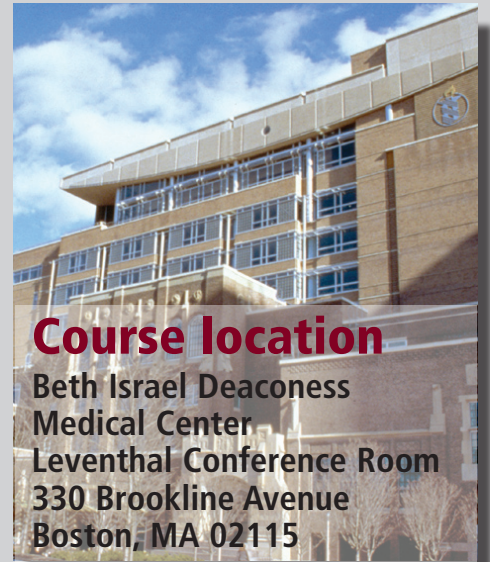
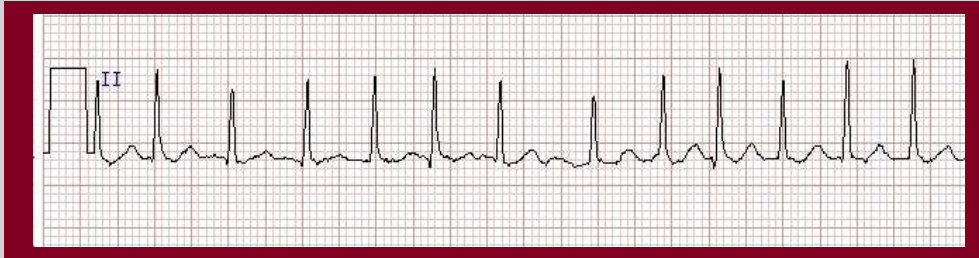




Beth Israel Deaconess Medical Center, Department of Medicine presents

ECGs 101:

A 2-Hour Super-Basic Introduction



Course location

Beth Israel Deaconess
Medical Center
Leventhal Conference Room
330 Brookline Avenue
Boston, MA 02115

Ary L. Goldberger, MD

Session 1

Basic Principles: How to Read an ECG

Dates

Tuesday, March 1 (10am-12pm)

Tuesday, March 15 (10am-12pm)

Session 2

Myocardial Ischemia and Infarction

Dates

Tuesday, April 19 (11am-1pm)

Tuesday, April 26 (12pm-2pm)

Session 3

Brady and Tachycardias

Dates

Tuesday, May 3 (10am-12pm)

Tuesday, May 10 (10am-12pm)

Session 4

Avoiding ECG Errors, Stumbles and Fumbles

Dates

Tuesday, June 14 (11am-1pm)

Tuesday, June 28 (12pm-2pm)

This 4-part highly interactive course is intended to give clinical caregivers an enhanced understanding of essentials of ECG analysis. Residents, medical students, nurses, cardiac rehabilitation clinicians, as well as those working in telemetry units, emergency departments, intensive care units or other sites where cardiac ECG monitoring is performed, will benefit from this course.

Please register early.

Registration is limited

For questions, please call: (617) 667-4267

or E-Mail: kjohnso3@bidmc.harvard.edu

ECGs 101: A 2-Hour Super-Basic Introduction



Ary L. Goldberger, MD, is Professor of Medicine of Harvard Medical School and Director of the Margret and H.A. Rey Institute for Nonlinear Dynamics in Physiology and Medicine (<http://reylab.bidmc.harvard.edu>). Dr. Goldberger is also Associate Director, Division of Interdisciplinary Medicine and Biotechnology at Beth Israel Medical Center, Boston, MA and a member of the Cardiovascular Division at BIDMC. He has a longstanding commitment to medical education and is the single-author of two standard textbooks on electrocardiography, which have been translated into multiple languages. Dr. Goldberger and his colleagues have developed the most extensive, free teaching resource for electrocardiography on the Internet: ECG Wave-Maven (<http://ecg.bidmc.harvard.edu>). He is course director of a number of top-rated Harvard Medical School CME courses on ECG analysis for frontline clinicians. His research is in the cutting edge and interdisciplinary areas of complex and nonlinear systems and he is founding and current Program Director of the NIH-sponsored Research Resource for Complex Physiologic Signals (<http://www.physionet.org>). He is also an Ellison Medical Foundation Senior Scholar in Aging.

This 4-part course is intended to give students and clinicians in medicine and nursing a brief, but comprehensive introduction to:

- **Basic ECG Principles** • This session will introduce the “just the essential” of reading ECG graphs, the very basic physiology and how to systematically interpret and make vital measurements. It will also show how the normal ECG patterns can be predicted from a few simple principles.
- **Myocardial Ischemia and Infarction** • This session will focus on one of the most important topics in clinical ECGs--the recognition of ischemia and infarction. It will discuss the differential diagnosis of ST elevation MI and also some of the patterns that can be confused with MI (e.g., normal variants and pericarditis).
- **Overview of Bradycardias and Tachycardias** • This session will give an overview of the major cardiac arrhythmias and conduction disturbances that can cause a dangerously slow or fast rate. The topics include sinus node dysfunction, heart block, atrial fibrillation and flutter, PSVTs and ventricular tachycardia.
- **Avoiding ECG Errors, Stumbles and Fumbles** • This final session will emphasize the uses and the limits of reading ECGs and some common errors that must be avoided. The focus is on “must-know” findings. Unknown ECGs will be presented for illustration and discussion.

We have a no refund policy – however you can transfer your tuition to another course that has space available.

Registration Form ECGs 101: A 2-Hour Super-Basic Introduction

Session 1

March 1, 2011

March 15, 2011

Session 2

April 19, 2011

April 26, 2011

Session 3

May 3, 2011

May 10, 2011

Session 4

June 14, 2011

June 28, 2011



Tuition Fee: \$50 (USD) per class. Check or money order **ONLY**.

Please make check payable to: BIDDM (Beth Israel Deaconess Dept. of Medicine)

Mail to: Kathy Johnson, BIDMC, 330 Brookline Ave., GZ-435, Boston, MA 02215

Full Name _____
Last First Middle Initial

Mailing Address _____
Street City State Zip

Daytime Phone (____) _____ Degree _____

E-Mail Address _____

For questions, please call Kathy Johnson at 617-667-4267.

You will receive an email confirmation once your registration is received.