

## New Mexico State Land Office Bookmark Contest

### Rules:

Contest is open to all New Mexico 4th grade students.

Entries must be dropped off or post marked by October 1, 2015 to be eligible for the contest.

Only one entry per student.

Entries must be submitted on the designated entry form template found under

EDUCATION – Bookmark Contest website: <http://www.nmstatelands.org>

Bookmark submission can only be entered into one category.

### Categories include:

*Oil, Gas and Mineral Resources*

*Forest and Waterways*

*Wind Energy/ Solar Energy*

*Agricultural*

*Recreational*

Contact information must be complete and clearly printed on the entry form.

Bookmark must be student's original art work and original message

The Winning students in each category will win a **kindle fire** donated by Yates Petroleum

and have their bookmark published and distributed at next year's State Fair!!!

The winning students class will have a pizza party with Commissioner Dunn !!!

SPECIAL DELIVERY !!!

**NEW MEXICO STATE LAND OFFICE**  
**AUBREY DUNN**

Commissioner of Public Lands

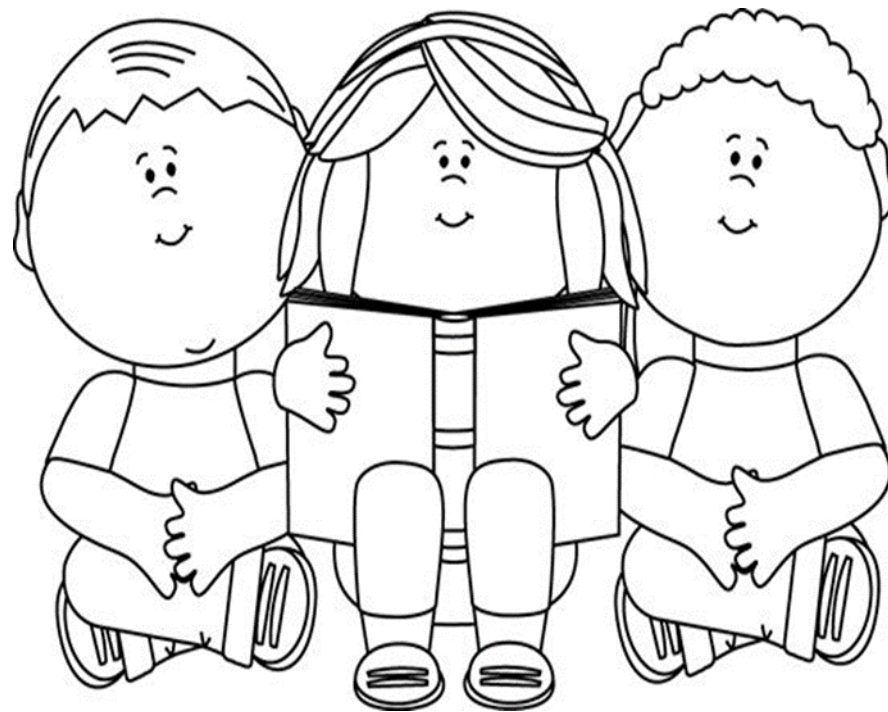
310 Old Santa Fe Trail, Santa Fe, NM 87501

505-827-5760

Questions?  
NMSLO 505-827-5760  
[studentsfirst@slo.state.nm.us](mailto:studentsfirst@slo.state.nm.us)



# New Mexico State Land Office in The CLASSROOM



# How will you use your land?



Let's pretend that the picture above is your property.  
Look at it very closely.

Is there water? \_\_\_\_\_

Does anything live in the water? \_\_\_\_\_

Are there plants and trees? \_\_\_\_\_

What animals visit or live on your property? The land, in the water, or in the air?  
\_\_\_\_\_

Do any animals live on or in the plants or trees? \_\_\_\_\_

Do any animals eat the plants? \_\_\_\_\_

Do you think any of the animals you see eat any of the other animals?  
\_\_\_\_\_

# Agriculture- *In Touch With You Daily!*

Whether or not we raise crops or livestock for a living, we are all involved in agriculture. Why? Because we eat, wear clothes, and benefit from all the byproducts that come from the plants and animals raised on farms and ranches in New Mexico and the United States.



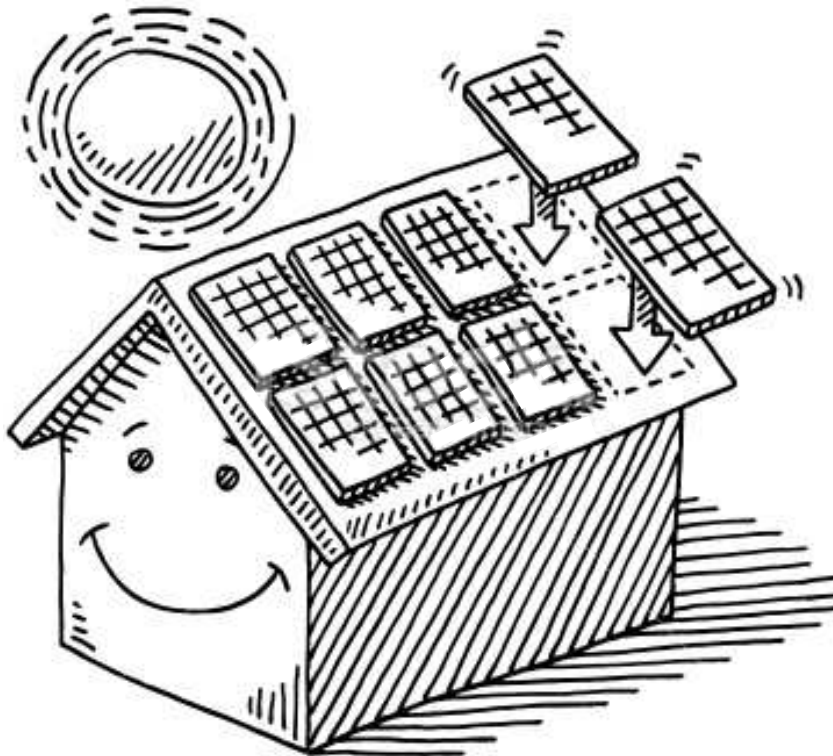
Think about how agriculture touches you throughout each and every day. When you went to bed last night you were probably sleeping on sheets made from cotton. When you took your shower or washed your face this morning you used soap that contained oil from corn, and fats from cattle.



How about the milk, toast, cereal, juice or other breakfast foods you ate? They were grown on a farm or ranch.

# Solar and Wind Energy

We get most of our energy from the sun. We call it solar energy. It travels from the sun to the earth in rays. The energy from the sun makes the rain fall and wind blow. We can capture that energy with dams and windmills

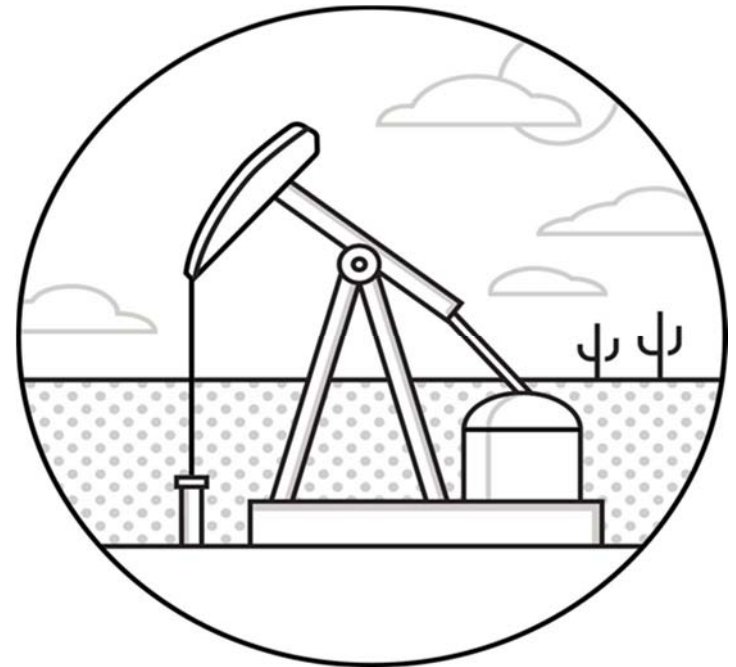


# Oil, Gas and Minerals

Petroleum is a liquid that is found underground. Sometimes we call it oil. Oil can be as thick and black as tar or as thin as water. Oil has a lot of energy. We can turn it into different fuels like gasoline, kerosene, and heating oil. Most plastics and inks are made from oil, too.

Natural gas is similar to air, you can't see it, smell it, or taste it. You can burn it to make heat. Natural gas was formed in the earth millions of years ago, before the dinosaurs.

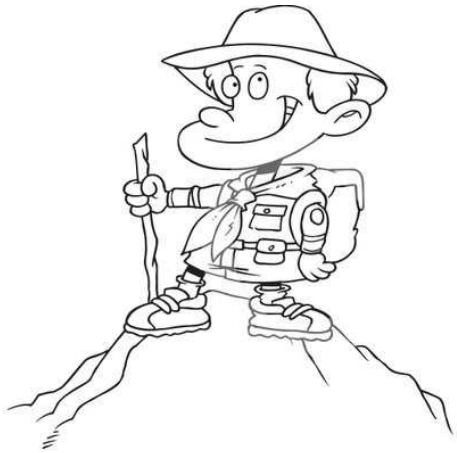
Minerals are the building blocks of things we use every day. Copper, Gold, Uranium, Potash and Zinc are several examples of the minerals produced in New Mexico.





# Recreation

## Day Hiking/ Photo Taking



The New Mexico State Land Office grants access for your class to visit our trust land. You can plan a hike to Mystery Stone at the base of Hidden Mountain. It is a boulder of volcanic basalt.

## Horseback Riding



The State Land Office has day passes for horseback riding. Enjoy a beautiful day riding your horses in the Colfax and Mora County, White's Peak area.

Recreational Permits are available at the Land Office.

## Forest and Watersheds

*The State Land Office treasures our forested land. We believe in managing our land to help forests grow healthy and provide habitat for wildlife. Fire is important to the health of our forests and watersheds, but sometimes wildfires burn too large and too hot. To reduce the risk of these large and severe wildfires, the State Land Office thins forests that are very dense and need management.*

