



LODI CITY COUNCIL

Carnegie Forum
305 West Pine Street, Lodi

"SHIRTSLEEVE" SESSION

Date: October 8, 2013

Time: 7:00 a.m.

For information regarding this Agenda please contact:

Randi Johl-Olson

City Clerk

Telephone: (209) 333-6702

NOTE: All staff reports or other written documentation relating to each item of business referred to on the agenda are on file in the Office of the City Clerk, located at 221 W. Pine Street, Lodi, and are available for public inspection. If requested, the agenda shall be made available in appropriate alternative formats to persons with a disability, as required by Section 202 of the Americans with Disabilities Act of 1990 (42 U.S.C. Sec. 12132), and the federal rules and regulations adopted in implementation thereof. To make a request for disability-related modification or accommodation contact the City Clerk's Office as soon as possible and at least 24 hours prior to the meeting date.

Informal Informational Meeting

A. Roll Call by City Clerk

B. Topic(s)

B-1 Status Report on White Slough Water Pollution Control Facility Discharge Permit (PW)

C. Comments by Public on Non-Agenda Items

D. Adjournment

Pursuant to Section 54954.2(a) of the Government Code of the State of California, this agenda was posted at least 72 hours in advance of the scheduled meeting at a public place freely accessible to the public 24 hours a day.

Randi Johl-Olson
City Clerk



**CITY OF LODI
COUNCIL COMMUNICATION**

TM

AGENDA TITLE: Status Report on White Slough Water Pollution Control Facility Discharge Permit
MEETING DATE: October 8, 2013 (Shirtsleeve Session)
PREPARED BY: Public Works Director

RECOMMENDED ACTION: Receive status report on White Slough Water Pollution Control Facility Discharge Permit.

BACKGROUND INFORMATION: The City Council will receive an update on the new discharge permit(s) for the White Slough Water Pollution Control Facility (WSWPCF) and associated requirements. Included in this presentation is a description of the permitting process, key permit requirements, financial impacts, and related future activities. The presentation will also identify immediate and long-term planning efforts for the WSWPCF.

FISCAL IMPACT: Not applicable.

FUNDING AVAILABLE: Not applicable.

F. Wally Sandelin
Public Works Director

Prepared by Larry Parlin, Deputy Public Works Director – Utilities

FWS/LP/pmf

APPROVED: _____
Konradt Bartlam, City Manager



White Slough Water Pollution Control Facility 2013 Discharge Permits

Lodi City Council Shirtsleeve Meeting
October 8, 2013



Presentation Outline

- Background
- Permitting Process
- Key Permit Requirements
- Financial Impacts
- Looking Forward




Background

- WSWPCF is permitted to treat 8.5 mgd of domestic and industrial wastewater.
- Discharge to surface water is regulated by a federal NPDES requirements.
- Discharge to land is regulated by state WDR requirements.
- Reclaimed Water supplied to LEC is regulated by CDPH Title 22 requirements.



Permitting Process

- Previous permit adopted in September of 2007.
- Typically a 12 to 18 month renewal process.
- A Report of Waste Discharge (ROWD) must be submitted 6 months prior to permit expiration date. ROWD submitted in February 2012.
- New Permits adopted October 3, 2013



Key Requirements for WDR and Master Reclamation Permit

- Title 27 Exemption
- Best Practicable Treatment or Control (BPTC)
- Groundwater Limitations for Manganese and Nitrate
- Requirements to be Re-evaluated During the Next 2 to 3 Years



Key Requirements for NPDES Permit

- No Effluent Temperature Requirement
- Reduced Receiving Water Monitoring
- CTR Requirements
- Methyl Mercury Program
- Chlorpyrifos and Diazinon Monitoring
- Changes in Toxicity Monitoring



Financial Impacts

- Increased Monitoring Costs
- Additional BPTC Study Required
- Ongoing Groundwater Monitoring
- Potential Capital Improvements



Looking Forward

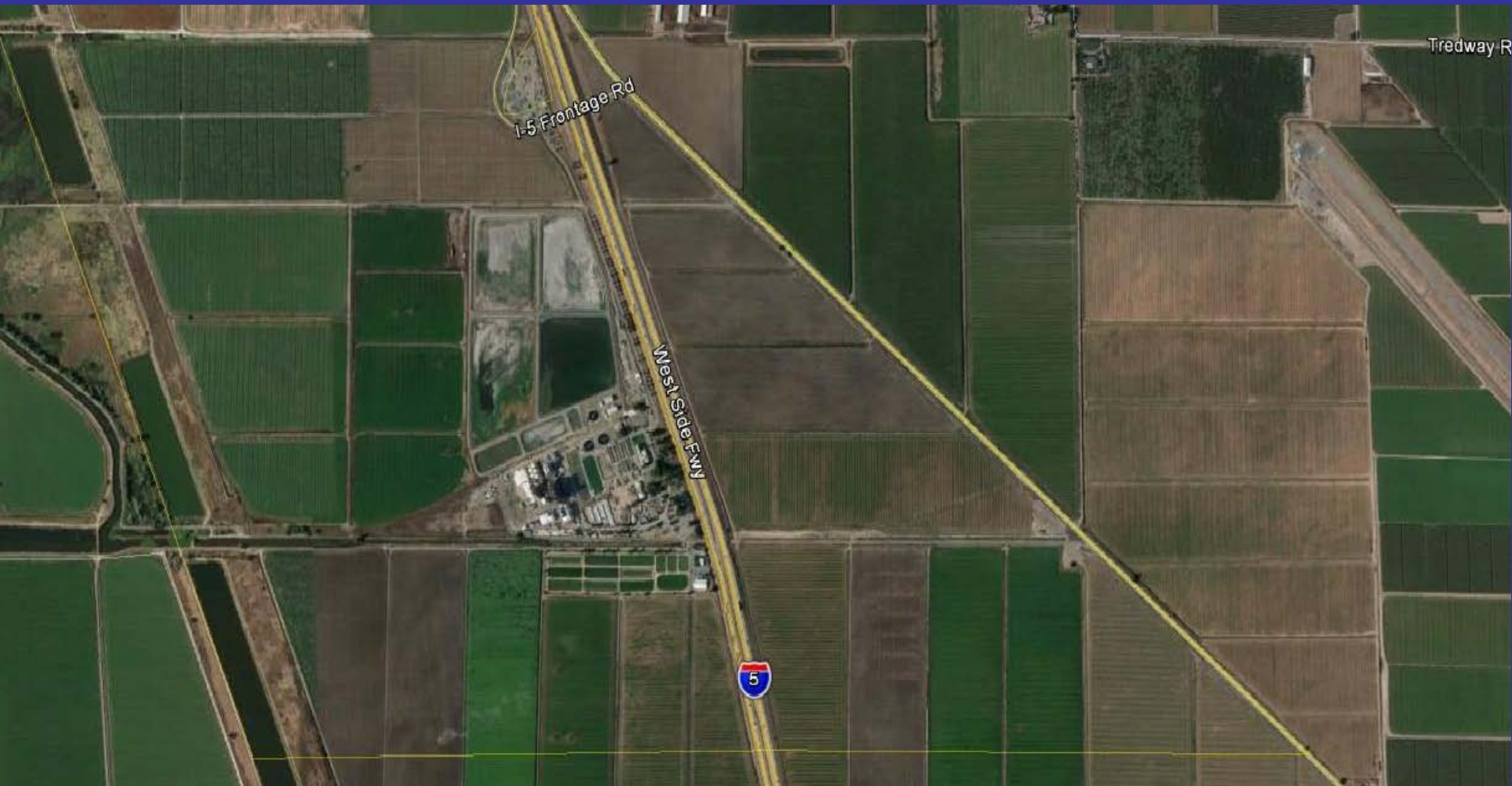
- Studying the feasibility of 100 percent wastewater reclamation.
- Maintain all options for discharge and disposal.
- Additional capital investments will be needed.



Land Application Expansion Study

- Evaluate Water Balance for 6.0, 7.0, and 8.5 MGD Flow
- Expansion of Irrigated Fields
- Construction of Additional Storage
- Eliminate use of Agricultural Wells
- Improvements to Flow Conveyance

Land Application Expansion Study



Land Application Expansion Study

- Eliminate use of Agricultural Wells



Land Application Expansion Study

- Improvements to Flow Conveyance





Pretreatment Program Update

- Revise Local Limits
- Update Sewer Use Ordinance
- Update Enforcement Response Plan

Questions?

