



An Appreciation and Invitation Letter to Caterpillar Inc.

To Caterpillar's Management, Board of Directors, Shareholders and Employees
From the City of Galesburg and the West Central Region

The City of Galesburg along with municipalities and regional organizations throughout the West Central Illinois Region share a great appreciation for Caterpillar's investment, contribution, and jobs that have supported our regional economy. We look forward to growing a quality, long-term partnership with the Caterpillar Corporation.

We collectively recognize that Caterpillar is a world class business and express interest and support for locating Caterpillar's small track type tractor and mini excavator manufacturing facility in the Galesburg area.

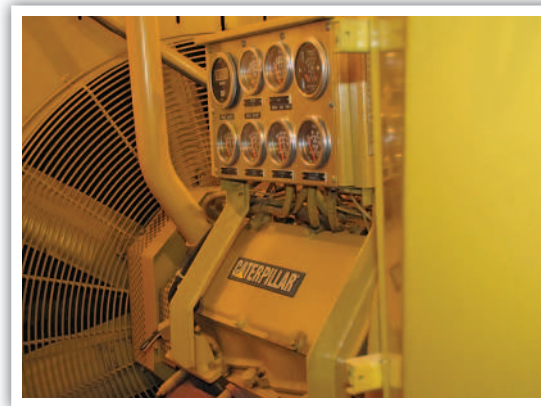
The City of Galesburg and our regional partners welcome the opportunity to work with Caterpillar to assist with the successful start-up and operation of a manufacturing plant. Our regional location assets in West Central Illinois include:

- Nationally Connected – Our transportation network provides market accessibility and national connectivity through BNSF's rail classification yard, Interstate 74, a municipal airport with jet service, and international air service and waterway service within 45 minutes;
- Centrally Located - Our central Midwest location provides fast and affordable shipment of incoming raw materials and outgoing finished product throughout North America;
- Productive Workforce - A productive and affordable workforce is regionally available, along with training and development services through Carl Sandburg College and other regional agencies;
- Talented Labor Pool – We have a continuous flow of talented individuals coming from Knox College, Bradley and Western Illinois University, and other educational institutions;
- Established Supply Chain – Our region has a proven and established manufacturing supply chain to support Caterpillar's manufacturing operations;
- Rail Served Business Park – The City of Galesburg owns a 330 acre business park that is industrial-zoned, shovel-ready, adjacent to I-74, rail servable and with a rail line to Peoria;
- Manufacturing & Warehouse Facilities - A variety of manufacturing buildings from 250,000 to 1.0 million sf are available for lease or sale to meet start-up and expansion needs of Caterpillar and its supply chain;
- Abundant Quality Water – The City of Galesburg has an abundant supply of quality water obtained from the Mississippi River aquifer;
- Development Assistance - Business development assistance and highly competitive incentives are available to reduce start-up and ongoing operation costs.

We, the City of Galesburg and the West Central Illinois Region look forward to Caterpillar's continued growth and being of assistance. We are equipped and ready to partner with Caterpillar and invite you to establish a globally competitive manufacturing operation in Galesburg.

Sincerely,

Sal Garza, Mayor
City of Galesburg



Galesburg depends on CAT equipment every day to serve its citizens.



City Hall • 55 West Tompkins Street • Galesburg, IL 61401 • 309/343-4181 • www.ci.galesburg.il.us

PROOF O.K. BY: _____ O.K. WITH CORRECTIONS BY: _____
PLEASE READ CAREFULLY • SUBMIT CORRECTIONS ONLINE

PE-4247072.INDD (71%)

ADVERTISER: CITY OF GALESBURG
SALES PERSON: Lori Sutton
SIZE: 10.125 X 20.31
PUBLICATION: PE-JS DAILY

PROOF CREATED AT: 2/3/2012 2:13 PM
NEXT RUN DATE: 02/05/12
PROOF DUE: 02/03/12 12:59:55