



Stainless Steel Main Door Glass Gasket (102305) Replacement Procedure

Items needed to accomplish replacement:

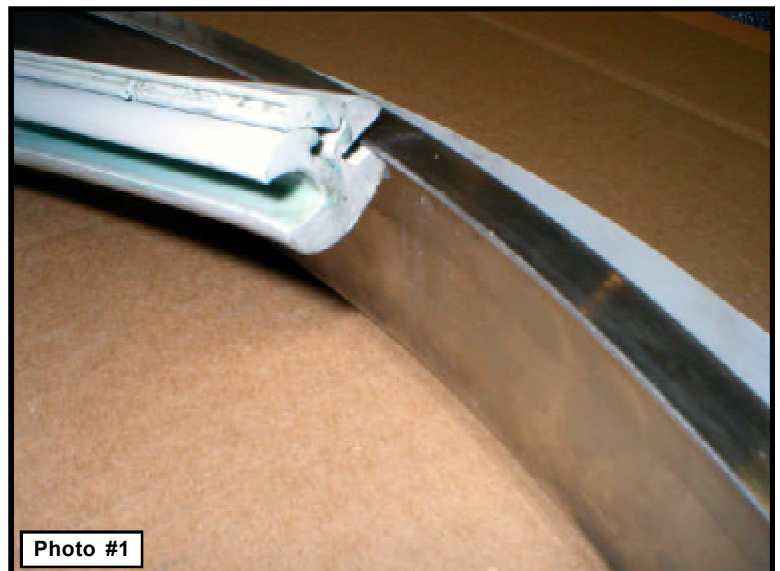
- Screwdriver (6-inch or 7-inch long with a 1/4" flat edge)
- Hammer and small finish nail.
- Vise grip or pliers.
- Liquid hand or dish wash soap.
- Safety glasses for eye protection.

Always think safety. Use eye protection and caution as you are dealing with glass.

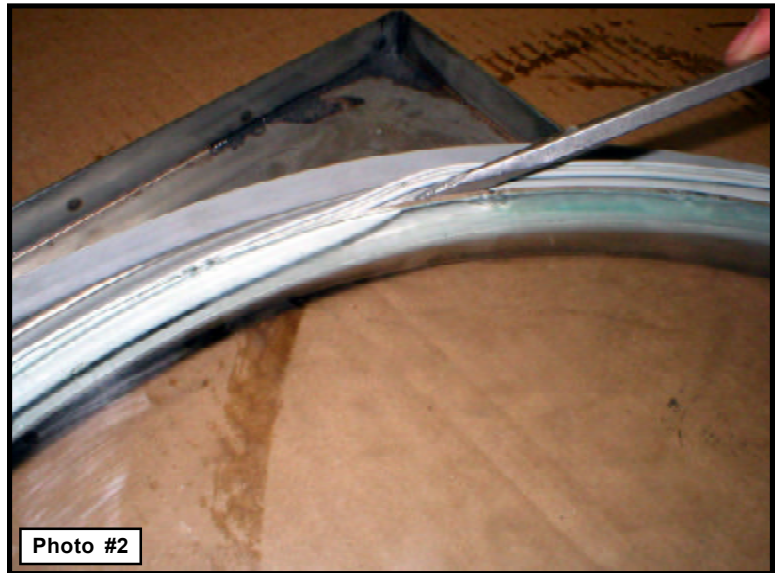
Read these instructions thoroughly and carefully before attempting replacement!

1. Remove the main door assembly from the dryer. To do so, using a hammer tap the hinge "pin" at the bottom side of the hinge with a small nail. This will push the top portion of the hinge pin up where the pin can be easily removed with a pair of vice grips or pliers. Be careful to hold on to the door so it does not fall!
2. With the main door handle side face down, lay the door on a flat work surface area (Note: Using a piece of cardboard on the flat surface will keep the door from slipping). Before removing the old gasket, look at one end (where the two ends are butted together) of the gasket and with a flat edged screwdriver, undo the zip lock part of the gasket approximately 1-inch. Using the screwdriver, re-zip it back into place to get an idea of how the zip lock works. Once you have the general idea of how the zip lock works, using the flat blade screwdriver again, unzip the gasket until the glass is loose enough to be removed.
3. The glass gasket (**ADC P/N 102305**) has three (3) grooves (photo #1). One groove is the zip lock (12 o' clock position) and the two grooves that face each other (9 o' clock and 3 o' clock positions) are for the glass and door ring. The 9 o' clock position (the larger groove) is for the glass, and the 3 o' clock position (the smaller groove) is the door side groove.

With the door face down, and with the gasket in position as shown in **photo #1**, starting at the top of the door (12 o' clock area) work the gasket into place all the way around the inside of the stainless steel door ring. Once you are at the end the gasket may appear to be too long, it's not! **DO NOT CUT THE GASKET!** Work the gasket into place until it butts with the other end.



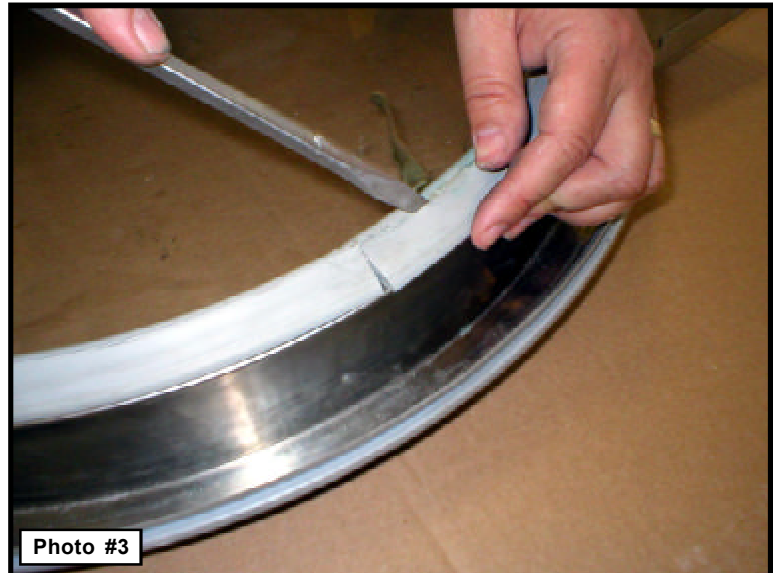
4. Position the glass at the top area of the door, and with the flat blade screwdriver, work the glass into the gasket groove (**photo #2**). Do a small section at a time, and walk the screwdriver blade using a rolling motion so that it pushes the glass into the gasket groove. Be careful not to use too much force on the screwdriver as it can chip the glass. The groove is tight and the glass may slip a little, so take your time with this step



IMPORTANT: When working the glass into place, the tendency is there to put force on the glass with the other hand. Be careful not to put too much force on the glass as it will fall through, and you will have to start all over again

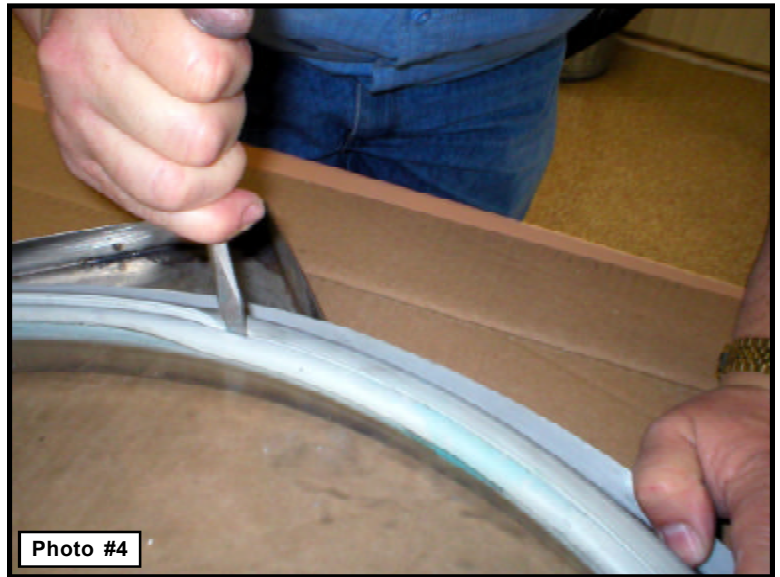
5. Once the glass is secured in place all around in the gasket, apply a small amount of a soap solution in the exposed zip lock groove. This soap will act as lubrication and should be used in the entire inside perimeter of this zip lock groove (all the way around the door).

Referring back to step 2 where the old gasket zip lock groove was undone, and re-locked, starting at one of the gasket ends, with the screwdriver blade tuck the zip lock in place (**photo #3**) for a distance of about 3-inches or so.



IMPORTANT: When working the zip lock into place, the tendency is there to put force on the glass with the other hand. Be careful not to put too much force on the glass as it will fall through, and you will have to start all over again

Once you have 3-inches or so of the gasket zip locked, hold the screwdriver in the center of the groove and drag the screwdriver blade **(photo #4)** through the gasket groove. With the soap acting as a lubricant, the screwdriver will ease the zip lock closed. Take your time as the liquid soap can cause the screwdriver to slip. Continue to zip the gasket closed all the way around the stainless steel door ring until the entire gasket is zip locked into place.



6. Clean the soap residue off of the door and gasket, and reinstall the door assembly back on to the dryer.