



Lighting Performance Checklist: Basketball

Prior to being approved for a televised event, facility must submit this checklist during the championship process to the championship administrator. Phone: 317/917-6222.

Inspection must be completed by a qualified lighting technician using a light meter calibrated within the last 12 months.

Press "TAB" to navigate to cells to enter required data. Average light levels and uniformity values automatically calculate when data is entered from light readings at each point on the court.

Light Levels Taken In: Footcandles Lux

Date of Inspection: November 20, 2012 Inspected By: Inspector Name

College/Organization Name: Sample College

College/Organization Contact: College Contact Name

Telephone: 555-555-5555 Email: email@email.com

Facility Address: Sample Facility Address City, State, Zip: Sample City, State, Zip

Notes:

Grid court as shown on the drawing below. Readings are taken in the middle of each square with light meter held 36 inches above ground, pointing up.

Number of grid points will vary depending on court size and layout.

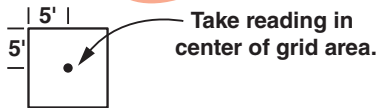
To obtain average light level value:

1. Record light level readings within each square
2. Total all readings, divide by number of grid readings taken

To obtain uniformity ratio:

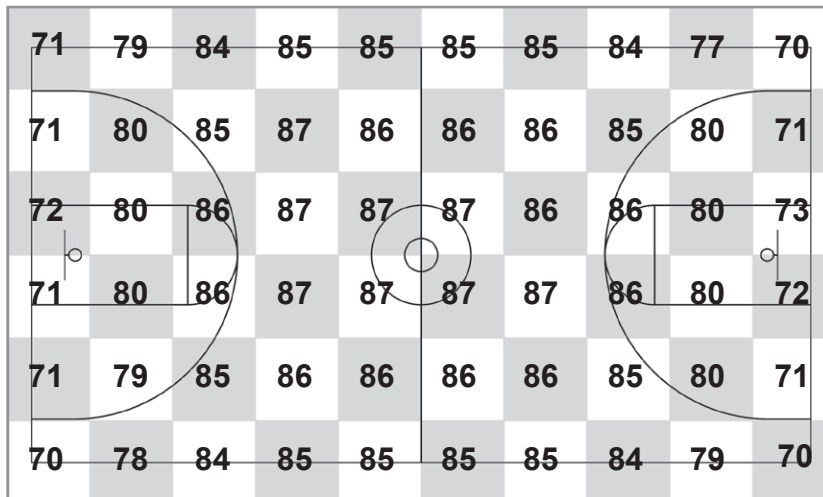
1. Divide highest (maximum) light level reading by the lowest (minimum) light level reading

10' x 10' grid



Instructions – Horizontal Light Level Readings: Complete for all surveys.

If outdoors, click outside the court perimeter to select approximate pole locations on the layout below.



| Horizontal Light Level and Court Survey Results: | |
|--|---------------------|
| Average light levels: | 81.5 |
| Uniformity: | 1.2:1 |
| (If outdoor) Quantity of poles: | 0 |
| Total # luminaires: | 44 |
| # luminaires operational: | 44 |
| Lamp wattage: | 1000 |
| System voltage (if available): | 277 |
| Date lighting system installed: | February 15, 2008 |
| Lighting manufacturer: | Musco |
| Date of last group relamp: | N/A |
| Annual hours of operation: | 1300 hours |
| Light meter brand: | Gossen Mavolux 5032 |
| Model #: | B |
| Calibration date: | August 10, 2012 |

Include facility photographs that may be helpful for camera or temporary lighting equipment locations, such as, standing on the center court line pointing towards hanging scoreboard and any obstructions on the catwalks where fixtures are unable to be located.

Court Orientation:

(Please indicate court orientation in cells around diagram to the right.)

