



US007702997B2

(12) **United States Patent**  
**Kotler et al.**

(10) **Patent No.:** **US 7,702,997 B2**  
(45) **Date of Patent:** **Apr. 20, 2010**

- (54) **SPREADSHEET FIELDS IN TEXT** 4,815,029 A 3/1989 Barker et al.
- 4,847,749 A 7/1989 Collins et al.
- (75) Inventors: **Matthew J. Kotler**, Kirkland, WA (US);  
**Alexander G. Gounares**, Kirkland, WA  
(US); **Oliver G. Fisher**, Redmond, WA  
(US); **Matthew D. Morgan**, Seattle, WA  
(US); **Christopher Matthew Franklin**,  
Bellevue, WA (US) 4,910,663 A 3/1990 Bailey  
4,933,880 A 6/1990 Borgendale et al.  
4,962,475 A 10/1990 Hernandez et al.  
5,072,412 A 12/1991 Henderson, Jr. et al.  
5,182,709 A 1/1993 Makus  
5,187,786 A 2/1993 Densmore et al.

(73) Assignee: **Microsoft Corporation**, Redmond, WA  
(US) (Continued)

(\* ) Notice: Subject to any disclaimer, the term of this  
patent is extended or adjusted under 35  
U.S.C. 154(b) by 20 days. EP 0841615 A2 11/1999  
FOREIGN PATENT DOCUMENTS

(21) Appl. No.: **10/961,547** (Continued)

(22) Filed: **Oct. 8, 2004** OTHER PUBLICATIONS

(65) **Prior Publication Data** Microsoft Visual Basic 5.0 Programmer's Guide, 1997, pp. 578-579,  
US 2005/0044497 A1 Feb. 24, 2005 Redmond, Washington 98052-6399.\*

(Continued)

**Related U.S. Application Data**

(62) Division of application No. 09/599,808, filed on Jun.  
21, 2000, now Pat. No. 7,117,435. *Primary Examiner*—Stephen S Hong  
*Assistant Examiner*—Matthew J Ludwig

(51) **Int. Cl.** (57) **ABSTRACT**  
**G06F 17/00** (2006.01)

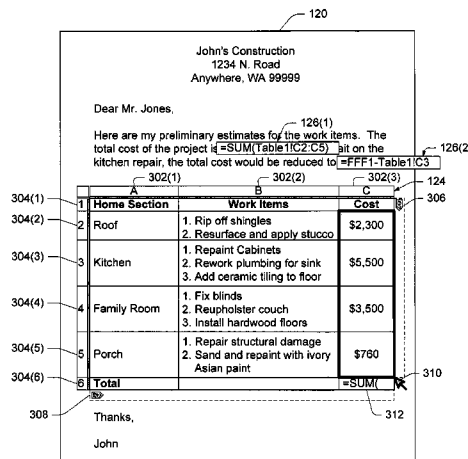
(52) **U.S. Cl.** ..... **715/209**; 715/213; 715/234;  
715/227; 715/219; 715/220  
(58) **Field of Classification Search** ..... 715/503,  
715/504, 509, 513, 515, 517, 209, 213, 234,  
715/227, 219, 220  
See application file for complete search history.  
A system architecture integrates spreadsheet functionality into text. The architecture allows insertion of discrete individual fields, referred to as "free floating fields", inline with normal textual sentences. In an HTML document, for example, the free floating fields are elements constructed along with text elements and rendered together as an integrated document. Once rendered, the free floating fields present contents that resemble normal text consistent with the surrounding text. The free floating fields offer spreadsheet functionality, including the ability to handle complex formulas, reference values in a separate free floating field or table, and automatically recalculate the formulas when a source value changes.

(56) **References Cited**

U.S. PATENT DOCUMENTS

- 4,514,800 A 4/1985 Gruner et al.
- 4,641,274 A 2/1987 Swank
- 4,674,040 A 6/1987 Barker et al.
- 4,723,211 A 2/1988 Barker et al.
- 4,739,477 A 4/1988 Barker et al.

**20 Claims, 10 Drawing Sheets**



U.S. PATENT DOCUMENTS					
5,191,645 A	3/1993	Carlucci et al.	5,815,830 A	9/1998	Anthony
5,195,183 A	3/1993	Miller et al.	5,826,265 A	10/1998	Van Huben et al.
5,204,947 A	4/1993	Bernstein et al.	5,835,777 A	11/1998	Staelin
5,206,951 A	4/1993	Khoyi et al.	5,838,906 A	11/1998	Doyle et al.
5,218,672 A	6/1993	Morgan et al.	5,842,018 A	11/1998	Atkinson et al.
5,237,680 A	8/1993	Adams et al.	5,845,077 A	12/1998	Fawcett
5,249,275 A	9/1993	Srivastava	5,845,090 A	12/1998	Collins, III et al.
5,274,803 A	12/1993	Dubin et al.	5,854,630 A	12/1998	Nielsen
5,297,249 A	3/1994	Bernstein et al.	5,859,973 A	1/1999	Carpenter et al.
5,297,283 A	3/1994	Kelly, Jr. et al.	5,862,372 A	1/1999	Morris et al.
5,313,645 A	5/1994	Hendricks et al.	5,864,819 A	1/1999	De Armas et al.
5,313,831 A	5/1994	Beckman	5,875,448 A	2/1999	Boys et al.
5,317,686 A	5/1994	Salas et al.	5,907,704 A	5/1999	Gudmundson et al.
5,333,317 A	7/1994	Dann	5,911,776 A	6/1999	Guck
5,339,423 A	8/1994	Beitel et al.	5,915,112 A	6/1999	Boutcher
5,339,424 A	8/1994	Fushimi	5,922,072 A	7/1999	Hutchinson et al.
5,341,478 A	8/1994	Travis, Jr. et al.	5,929,858 A	7/1999	Shibata et al.
5,369,766 A	11/1994	Nakano et al.	5,940,075 A	8/1999	Mutschler, III et al.
5,369,778 A	11/1994	San Soucie et al.	5,950,010 A	9/1999	Hesse et al.
5,371,675 A	12/1994	Greif et al.	5,950,196 A	9/1999	Pyreddy et al.
5,377,323 A	12/1994	Vasudevan	5,956,481 A	9/1999	Walsh et al.
5,381,547 A	1/1995	Flug et al.	5,960,199 A	9/1999	Brodsky et al.
5,390,325 A	2/1995	Miller	5,963,964 A	10/1999	Nielsen
5,396,623 A	3/1995	McCall et al.	5,982,370 A	11/1999	Kamper
5,408,665 A	4/1995	Fitzgerald	5,987,480 A	11/1999	Donohue et al.
5,410,688 A	4/1995	Williams et al.	5,991,710 A	11/1999	Papineni
5,434,975 A	7/1995	Allen	5,995,103 A	11/1999	Ashe
5,440,744 A	8/1995	Jacobson et al.	5,999,740 A	12/1999	Rowley
5,446,842 A	8/1995	Schaeffer et al.	6,014,135 A	1/2000	Fernandes
5,459,865 A	10/1995	Heninger et al.	6,016,520 A	1/2000	Facq et al.
5,481,722 A	1/1996	Skinner	6,018,743 A	1/2000	Xu
5,504,898 A	4/1996	Klein	6,026,379 A	2/2000	Haller et al.
5,517,655 A	5/1996	Collins et al.	6,026,416 A	2/2000	Kanerva et al.
5,535,389 A	7/1996	Elder et al.	6,031,989 A	2/2000	Cordell
5,542,070 A	7/1996	LeBlanc et al.	6,035,309 A	3/2000	Dauerer et al.
5,550,976 A	8/1996	Henderson et al.	6,044,205 A	3/2000	Reed et al.
5,551,035 A	8/1996	Arnold et al.	6,052,710 A	4/2000	Saliba et al.
5,572,643 A	11/1996	Judson	6,054,987 A	4/2000	Richardson
5,572,648 A	11/1996	Bibayan	6,072,870 A	6/2000	Nguyen et al.
5,577,252 A	11/1996	Nelson et al.	6,078,327 A	6/2000	Liman et al.
5,581,686 A	12/1996	Koppolu et al.	6,081,610 A	6/2000	Dwork et al.
5,581,760 A	12/1996	Atkinson et al.	8,078,326	6/2000	Kilmer
5,602,996 A	2/1997	Powers, III et al.	6,084,585 A	7/2000	Kraft et al.
5,608,720 A	3/1997	Biegel et al.	6,088,708 A	7/2000	Burch et al.
5,627,979 A	5/1997	Chang et al.	6,091,417 A	7/2000	Lefkowitz
5,630,126 A *	5/1997	Redpath ..... 707/103 R	6,094,657 A	7/2000	Hailpern et al.
5,634,121 A	5/1997	Tracz et al.	6,098,081 A	8/2000	Heidorn et al.
5,640,544 A	6/1997	Onodera et al.	6,108,637 A	8/2000	Blumenau
5,659,729 A	8/1997	Nielsen	6,108,783 A	8/2000	Krawczyk et al.
5,664,178 A	9/1997	Sinofsky	6,122,647 A	9/2000	Horowitz
5,669,005 A *	9/1997	Curbow et al. .... 715/523	6,144,969 A	11/2000	Inokuchi et al.
5,682,536 A	10/1997	Atkinson et al.	6,151,624 A	11/2000	Teare et al.
5,689,703 A	11/1997	Atkinson et al.	6,163,772 A	12/2000	Kramer et al.
5,706,501 A	1/1998	Horikiri et al.	6,167,521 A	12/2000	Smith et al.
5,717,939 A	2/1998	Bricklin et al.	6,192,367 B1	2/2001	Hawley et al.
5,721,824 A	2/1998	Taylor	6,195,661 B1	2/2001	Filepp et al.
5,740,439 A	4/1998	Atkinson et al.	6,199,204 B1	3/2001	Donohue
5,742,504 A	4/1998	Meyer et al.	6,209,128 B1	3/2001	Gerard et al.
5,745,683 A	4/1998	Lee et al.	6,216,152 B1	4/2001	Wong et al.
5,758,184 A	5/1998	Lucovsky et al.	6,219,698 B1	4/2001	Iannucci et al.
5,758,358 A	5/1998	Ebbo	6,225,996 B1	5/2001	Gibb et al.
5,761,408 A	6/1998	Kolawa et al.	6,235,027 B1	5/2001	Herzon
5,761,683 A	6/1998	Logan et al.	6,249,794 B1	6/2001	Raman
5,764,984 A	6/1998	Loucks	6,253,366 B1	6/2001	Mutschler, III
5,764,985 A	6/1998	Smale	6,253,374 B1	6/2001	Dresevic et al.
5,778,372 A	7/1998	Cordell et al.	6,263,313 B1	7/2001	Milsted et al.
5,784,555 A	7/1998	Stone	6,266,810 B1	7/2001	Tanaka et al.
5,798,757 A	8/1998	Smith	6,275,227 B1	8/2001	DeStefano
5,801,701 A	9/1998	Koppolu et al.	6,275,599 B1	8/2001	Adler et al.
5,802,304 A	9/1998	Stone	6,282,711 B1	8/2001	Halpern et al.
5,808,079 A	9/1998	Riuehe et al.	6,286,033 B1	9/2001	Kishinsky et al.
			6,289,513 B1	9/2001	Bentwich
			6,292,897 B1	9/2001	Gennaro et al.

6,297,819	B1	10/2001	Furst	6,631,519	B1	10/2003	Nicholson et al.
6,308,179	B1	10/2001	Petersen et al.	6,635,089	B1	10/2003	Burkett et al.
6,311,271	B1	10/2001	Gennaro et al.	6,636,845	B2	10/2003	Chau et al.
6,321,334	B1	11/2001	Jerger et al.	6,643,633	B2	11/2003	Chau et al.
6,327,628	B1	12/2001	Anuff et al.	6,643,684	B1	11/2003	Malkin et al.
6,343,302	B1	1/2002	Graham	6,654,737	B1	11/2003	Nunez
6,345,256	B1	2/2002	Milsted et al.	6,658,417	B1	12/2003	Stakutis et al.
6,345,361	B1	2/2002	Jerger et al.	6,668,369	B1	12/2003	Krebs et al.
6,347,323	B1	2/2002	Garber et al.	6,678,717	B1	1/2004	Schneider
6,349,408	B1	2/2002	Smith	6,691,230	B1	2/2004	Bardon
6,353,926	B1	3/2002	Parthesarathy et al.	6,691,281	B1	2/2004	Sorge et al.
6,356,906	B1	3/2002	Lippert et al.	6,697,944	B1	2/2004	Jones et al.
6,357,038	B1	3/2002	Scouten	6,701,434	B1	3/2004	Rohatgi
6,366,912	B1	4/2002	Wallent et al.	6,711,679	B1	3/2004	Guski et al.
6,369,840	B1	4/2002	Barnett et al.	6,735,721	B1	5/2004	Morrow et al.
6,374,402	B1	4/2002	Schmeidler et al.	6,748,385	B1	6/2004	Rodkin
6,381,742	B2	4/2002	Forbes et al.	6,751,777	B2	6/2004	Bates
6,381,743	B1	4/2002	Mutschler, III	6,760,723	B2	7/2004	Oshinsky et al.
6,389,434	B1	5/2002	Rivette	6,772,139	B1	8/2004	Smith
6,393,456	B1	5/2002	Ambler et al.	6,774,926	B1	8/2004	Ellis
6,396,488	B1	5/2002	Simmons et al.	6,845,380	B2	1/2005	Su et al.
6,408,311	B1	6/2002	Baisley et al.	6,848,078	B1	1/2005	Birsan et al.
6,421,070	B1	7/2002	Ramos et al.	6,874,130	B1	3/2005	Baweja et al.
6,421,656	B1	7/2002	Cheng et al.	6,901,403	B1	5/2005	Bata et al.
6,425,125	B1	7/2002	Fries et al.	6,924,827	B1	8/2005	Gulati et al.
6,434,563	B1	8/2002	Pasquali et al.	6,931,532	B1	8/2005	Davis et al.
6,434,564	B2	8/2002	Ebert	6,963,875	B2	11/2005	Moore et al.
6,436,637	B1	8/2002	Gayraud et al.	6,965,926	B1	11/2005	Shapiro et al.
6,442,755	B1	8/2002	Lemmons et al.	6,968,505	B2	11/2005	Stoll et al.
6,446,110	B1	9/2002	Lection et al.	7,523,390	B2	4/2009	Kotler
6,449,617	B1	9/2002	Quinn et al.	2001/0024195	A1	9/2001	Hayakawa
6,460,058	B2	10/2002	Koppolu	2001/0034733	A1	10/2001	Prompt et al.
6,470,349	B1	10/2002	Heninger et al.	2001/0037345	A1	11/2001	Kiernan et al.
6,473,800	B1	10/2002	Jerger et al.	2001/0056429	A1	12/2001	Moore et al.
6,476,828	B1	11/2002	Burkett et al.	2001/0056460	A1	12/2001	Sahota et al.
6,476,833	B1	11/2002	Moshfeghi	2002/0002648	A1	1/2002	Kawase et al.
6,477,544	B1	11/2002	Bolosky	2002/0026441	A1	2/2002	Kutay et al.
6,480,860	B1	11/2002	Monday	2002/0026461	A1	2/2002	Kutay et al.
6,487,566	B1	11/2002	Sundaresan	2002/0040469	A1	4/2002	Pramberger
6,493,702	B1	12/2002	Adar et al.	2002/0057297	A1	5/2002	Grimes et al.
6,502,101	B1	12/2002	Verprauskus et al.	2002/0100027	A1	7/2002	Binding et al.
6,502,103	B1	12/2002	Frey et al.	2002/0112224	A1	8/2002	Cox
6,505,230	B1	1/2003	Mohan et al.	2002/0133484	A1	9/2002	Chau et al.
6,505,300	B2	1/2003	Chan et al.	2002/0156772	A1	10/2002	Chau et al.
6,507,856	B1	1/2003	Chen et al.	2002/0156929	A1	10/2002	Hekmatpour
6,516,322	B1	2/2003	Meredith	2002/0169789	A1	11/2002	Kutay et al.
6,519,617	B1	2/2003	Wanderski et al.	2002/0174147	A1	11/2002	Wang et al.
RE38,070	E	4/2003	Spies et al.	2002/0184219	A1	12/2002	Preisig et al.
6,546,546	B1	4/2003	Van Doorn	2002/0196288	A1	12/2002	Emrani
6,549,221	B1	4/2003	Brown et al.	2002/0198891	A1	12/2002	Li et al.
6,549,878	B1	4/2003	Lowry et al.	2003/0014397	A1	1/2003	Chau et al.
6,549,922	B1	4/2003	Srivastava et al.	2003/0037303	A1	2/2003	Bodlaender et al.
6,560,640	B2	5/2003	Smethers	2003/0043986	A1	3/2003	Creamer et al.
6,560,820	B2	5/2003	Ching et al.	2003/0051243	A1	3/2003	Lemmons et al.
6,563,514	B1	5/2003	Samar	2003/0056198	A1	3/2003	Al-Azzawe et al.
6,571,253	B1	5/2003	Thompson et al.	2003/0058277	A1	3/2003	Bowman-Amuah
6,578,144	B1	6/2003	Gennaro et al.	2003/0061386	A1	3/2003	Brown et al.
6,581,061	B2	6/2003	Graham	2003/0120659	A1	6/2003	Sridhar
6,584,548	B1	6/2003	Bourne et al.	2003/0120671	A1	6/2003	Kim et al.
6,585,778	B1	7/2003	Hind et al.	2003/0140132	A1	7/2003	Champagne et al.
6,598,219	B1	7/2003	Lau	2003/0158897	A1	8/2003	Ben-Natan et al.
6,601,061	B1	7/2003	Holt et al.	2003/0182268	A1	9/2003	Lal
6,604,099	B1	8/2003	Chung et al.	2003/0187930	A1	10/2003	Ghaffar et al.
6,606,606	B2	8/2003	Starr	2003/0189593	A1	10/2003	Yarvin
6,609,200	B2	8/2003	Anderson et al.	2003/0204511	A1	10/2003	Brundage et al.
6,611,822	B1	8/2003	Beams et al.	2003/0204814	A1	10/2003	Elo et al.
6,611,840	B1	8/2003	Baer et al.	2003/0205615	A1	11/2003	Marappan
6,613,098	B1	9/2003	Sorge et al.	2003/0225768	A1	12/2003	Chaudhuri et al.
6,615,276	B1	9/2003	Mastrianni et al.	2003/0225829	A1	12/2003	Pena et al.
6,629,109	B1	9/2003	Koshisaka	2003/0237046	A1	12/2003	Parker et al.
6,631,357	B1	10/2003	Perkowski	2003/0237047	A1	12/2003	Borson
6,631,379	B2	10/2003	Cox	2004/0002939	A1	1/2004	Arora et al.
6,631,497	B1	10/2003	Jamshidi et al.	2004/0030715	A1	2/2004	White et al.

2004/0117769 A1 6/2004 Lauzon et al.  
 2004/0205473 A1 10/2004 Fisher et al.  
 2004/0205571 A1 10/2004 Adler et al.  
 2005/0102370 A1 5/2005 Lin et al.  
 2005/0198086 A1 9/2005 Moore et al.  
 2009/0083615 A1 3/2009 Kotler et al.

## FOREIGN PATENT DOCUMENTS

EP 0961197 12/1999  
 EP 1076290 A2 2/2001  
 JP 63085960 4/1988  
 JP 401173140 A 7/1989  
 JP 4225466 8/1992  
 JP 5314152 11/1993  
 JP 406014105 1/1994  
 JP 6139241 5/1994  
 JP 6180697 6/1994  
 JP 6180698 6/1994  
 JP 3191429 1/2000  
 JP 2000132436 5/2000  
 JP 2002183652 6/2002  
 JP 2003173288 6/2003  
 WO WO99/24945 5/1999  
 WO WO99/56207 11/1999  
 WO WO01/44934 A1 6/2001

## OTHER PUBLICATIONS

Dave Raggett, "HTML Tables", W3C Internet Draft, Jul. 7, 1995, pp. 1-12.\*  
 Microsoft Word 2000 Screen Shots, 1999, pp. 1-5.\*  
 Cybook, Inc.: "Copying the Search Form to Services-based Web Sites" Internet Article, (online) Jul. 26, 2004.  
 Macromedia, Inc.: "Dreamweaver Technote, Changes in copying and pasting in Dreamweaver 4" Internet Article (online).  
 Rado, Dave: "How to create a template that makes it easy for users to 'fill in the blanks', without doing any programming" Microsoft Word MVP FAQ Site, (online) Apr. 30 2004.  
 "A tour of Xmetal" O'Reilly XML.COM 'Online Jul. 14, 1999 XP002230081 retrieved from the Internet [URL: <http://www.xml.com/pub/a/SeyboldReport/ip0311025.html>] retrieved on Feb. 5, 2003.  
 Atova, "User Reference manual Version 4.4, XML Spy suite 4.4," Atova Ges.m.b.H and Attova, Inc., May 24, 2002, pages cover, copyright page, 1-565.  
 Altova et al. XML Spy, XML Integrated Development Environments, Altova Inc., 2002, pp. 1-18.  
 "Architecture for a Dynamic Information Area Control" IBM Technical Disclosure Bulletin IBM Corp. New York US vol. 37 No. 10 Jan. 10, 1994. pp. 245-246.  
 "Netscape Communicator's Collapsible Toolbars" CHI'98 Human Factors in Computing Systems Conference Proceedings Los Angeles CA Apr. 18-23, 1998 pp. 81-86.  
 Barker et al., "Creating In-Line Objects Within an Integrated Editing Environment" IBM Technical Disclosure Bulletin, vol. 27, No. 5, Oct. 1984, p. 2962.  
 "Flexible Information Presentation with XML." 1998 the Institution of Electrical Engineers 6 pages.  
 Ben-Natan. U.S. Appl. No. 60/203,081, filed May 9, 2000, entitled "Internet platform for creating and supporting communities".  
 Berg A., "Naming and Binding: Monikers" Inside OLE, 1995, Chapter 9, pp. 431-490.  
 "Arbortext Adept 8 Editor Review" O'Reilly XML.Com 'Online! Sep. 22, 1999 XP002230080 retrieved from the Internet [URL: <http://www.xml.com/pub/a/1999109/adept/AdeptRvwv.htm>] retrieved on Feb. 5, 2003.  
 "XKvalidator. A Constraint Validator for XML" CIKM'-2 Nov. 4-9 2002 Copyright 2002 ACM 1-58113-492-4/02/0011 pp. 446-452.  
 "Designing Valid XML Views" ER 2002 LNCS 2503 2002 Springer-Verlag Berlin Heidelberg 2002 pp. 483-477.  
 Efficient Management of Multiversion Documents by Object Referencing Proceedings of the 27th VLDB Conference 2001 pp. 291-300.

"Efficient schemes for managing multiversion XML documents" VLDB Journal (2002) pp. 332-352.  
 "Storing and Querying Multiversion XML Documents using Durable Node Numbers" IEEE 2002 pp. 232-241.  
 "XML Document Versioning" SIGMOD Record vol. 30 No. 3 Spat 2001 pp. 46-53.  
 "Generic Validation of Structural Content with Parametric Modules" ICFP '01 Sep. 3-5, 2001 Copyright 2001 ACM 1-58113-415-0/01/0009 pp. 98-109.  
 "Managing Complex Documents Over the WWW: A Case Study for XML" IEEE Transactions on Knowledge and Data Engineering vol. 11 No. 4 Jul./Aug. 1999. pp. 629-938.  
 Clapp D., "The NeXT Application It Part I: Non-Responsive Classes," The NeXT Bible 1990, Chapter 16, pp. 275-293.  
 Clark James—W3C Editor, "XSL Transformation (XSLT) Verison 1.0" Nov. 16 1999 W3C (MIT INRIA Kejo) pp. 1-156.  
 W3C Editor James Clark and Ste; "XML Path Language (XPath) Version 1.0" Nov. 16, 1999 W3C (MIT INRIA Kejo) pp. 1-49.  
 "From small beginnings" Knowledge Management Nov. 2001 pp. 28-30.  
 "XML Editors: Allegations of Functionality in search of reality" Internet 'Online! 1999 XP002230082 retrieved from the Internet (URL: <http://www.ivrytype.com/xml/>).  
 "Photo Shop 5/5.5 WOW! Book" 2000 Peachpit Press pp. 8-17.  
 Description of Whitehill Composer software product produced by Vwhitehill Technologies Inc. available at [<http://www.xml.com/pub4/221>] accessed on Apr. 8 2004, two pages.  
 DiLascia et al., "Sweeper" Microsoft Interactive Developer, vol. 1, No. 1, 1996, 27 pages.  
 "XML Spy Tops as XML Editor" <http://www.eweek.com/article/0395972404100.asp> Nov. 25 2002 4 pages.  
 Excel Developer Tip (hereinafter "Excel"), "Determining the Data Type of a Cell", May 13, 1998, p. 1 (available at <http://jwalk.com/ss/excel/tips/tip62.htm>).  
 "Agent-based Software Configuration and Deployment" Thesis of the University of Colorado Online Dec. 31, 1999 retrieved from the Internet on Nov. 7, 2003: [<http://www.cs.colorado.edu/users/rickhall/documents/ThesisFinal.pdf>] 169 pages.  
 Han et al, WebSplitter: A Unified XML Framework for Multi-Device Collaborative Web Browsing, 2000, ACM Conference on Cimpluter Supported Cooperative Work, 10 pages.  
 "Mapping and Displaying Structural Transformations between XML and PDF" DocEng '02 Nov. 8-9, 2002 Copyright 2002 ACM 1-58113-597-7/02/0011 pp. 95-102.  
 "Tsbiff—tildeslash biff—version 1.2.1" Internet Document [Online] Jun. 1999 URL: <http://web.archive.org/web/19990912001527/http://www.tildeslash.com/tsbiff/>.  
 Herzner et al., "CDAM—Compound Document Access and Management An Object-Oriented Approach" Multimedia Systems Interaction and Applications, 1992, Chapter 3, pp. 17-36.  
 "Micro-Firewalls for Dynamic Network Security with Distributed Intrusion Detection"; IEEE International Symposium on Network Computing and Applications; 2001; pp. 68-79.  
 IBM: Stack Algorithm for Extractin Subtree from Serialized Tree, Mar. 1, 1994, TDB-ACC-NONN94033, 3 pages.  
 Ixia Soft, "SteamlinIng content creation, retrieval, and publishing on the Web using TEXTML Server and SML Spy 4 Suite in an integrated, Web publishing environment," (Partners Whitepaper, published on the Web as of Jun. 6, 2002, download pp. 1-16.  
 "Specifying Runtime Environments and Functionalities of Downloadable Components Under the Sandbox Mode"; International Symposium on Principles of Software Evolution; 2000; pp. 138-142.  
 "An Efficiently Updatable Index Scheme for Structured Documents" 1998 IEEE pp. 991-998.  
 "Immediate and Partial Validation Mechanism for the Conflict Resolution of Update Operations in XML Databases" WAIM 2002 LNCS 2419 2002 pp. 387-396 Springer-Verlag Berlin Heidelberg 2002.  
 Kobayashi et al., "An Update on Btron-specification OS Development" IEEE 1991, pp. 132-140.  
 Komatsu N. et al., "A Proposal on Digital Watermark in Document Image Communication and Its Application to Realizing a Signature"

- Electronics and Communications in Japan Part I: Communications vol. 73 No. 5, May 1990, pp. 22-33.
- Kutay, U.S. Appl. No. 60/209,713, filed Jun. 5, 2000, entitled, "Methods and systems for accessing, organizing presenting and viewing data".
- Laura Acklen and Read Gilgen, "Using coral Wordperfect 9", 251-284, 424-434, 583-588 (1998).
- McCright J.S.; "New Tool Kit to Link Groove with Microsoft Sharepoint" eWeek Enterprise News and Reviews Ziff Davis Media Inc. Jul. 29 2002.
- Microsoft Word 2000 (see Screen Shot "About Microsoft Word") Published 1983-1999 and Microsoft Excel 2000 (see Screen Shot "About Microsoft Excel") Published 1988-1999, Three pages.
- Moore, U.S. Appl. No. 60/191,662 filed Mar. 23, 2000, entitled "Collection-based persistent digital archives".
- Musgrave S; "Networking technology— impact and opportunities" Survey and Statistical Computing 1996. Proceedings of the Second ASC International Conference. Sep. 1998. pp. 369-78. London UK.
- "Validation with MSXML and XML Schema" Windows Developer Magazine Jan. 2002 pp. 35-38.
- "SmartUpdate Developer's Guide" Online Mar. 11, 1999 retrieved from the Internet on Dec. 8, 2000: [<http://developer.netscape.com:80/docs/manuals/communicator/jaman/index.html>] 83 pages.
- "Netscape Communicator 4.61 for OS/2 Warp" Software 1999 The whole software release and "Netscape—Version 4.6 [en]-010615" Netscape Screenshot Oct. 2, 2002.
- "A secure conditional access system using digital signature and encryption" 2003 Digest of Technical Papers. International Conference on Consumer Electronics Jun. 2003 pp. 220-221.
- Object Management Group, XML Metadata Interchange (XMI) Specification Version 1.2 Jan. 2002.
- "Delphi 5 Developers Guide" Sams Publishing 1999 Chapter 31 Section: Data Streaming 6 pages.
- Peterson B., "Unix Variants," Unix Review, vol. 10, No. 4, Apr. 1992, pp. 29-31.
- Pike et al., "Plan 9 from Bell Labs" UKUUG, Summer 1990, 10 pages.
- Pike et al., "The Use of Name Spaces in Plan 9," Operating Systems Review vol. 27, No. 2, Apr. 1993, pp. 72-76.
- Prevelakis et al., "Sandboxing Applications"; Proceedings of the FREENIX Track; 2001; pp. 119-120.
- Rapaport L; "Get more from SharePoint" Transform Magazine vol. 11 No. 3. Mar. 2002 pp. 1315.
- "Validating MPEG-21 Encapsulated Functional Metadata" IEEE 2002 pp. 209-212.
- Schmid et al., "Protecting Data from Malicious Software"; 18th Annual Computer Security Applications Conference; 2002; pp. 199-208.
- Staneck W., "Internal and External Media" Electronic Publishing Unleashed, 1995, Chapter 22, pp. 510-542.
- "Store and Organize Related Project Files in a Binder," Getting Results with Microsoft Office, 1990, pp. 109-112.
- Sun Q. et al., "A robust and secure media signature scheme for Jpeg images" Proceedings of 2002 IEEE Workshop on Multimedia Signal Processing, Dec. 2002, pp. 296-299.
- "XFIG Version 3.2 Patchlevel 2 (Jul. 2 1998) Users Manual (Edition 1.0)" Internet Document [Online] Jul. 2, 1998 XP002229137 Retrieved from the Internet [URL:[http://www.ice.mtu.edu/online\\_docs/xfig332/](http://www.ice.mtu.edu/online_docs/xfig332/)] (retrieved on Jan. 28, 2003).
- "An Efficient and Flexible Access Control Framework for Java Programs in Mobile Terminals"; 22nd International Conference on Distributed Computing Systems Workshops; 2002; pp. 777-782.
- Trupin J., "The Visual Programmer," Microsoft Systems Journal, Apr. 1996, pp. 103-105.
- "XML: Not a Silver Bullet But a Great Pipe Wrench" Standardview vol. 6. No. 3 Sep. 1998 pp. 125-132.
- "The Open Software Description Format" Online Aug. 13, 1997 retrieved from the Internet on Nov. 7, 2003 [<http://www.w3.org/TR/NOTE-OSD>] 11 pages.
- "Bridging XML-Schema and relational databases. A System for generating and manipulating relational databases using valid XML documents." DocEng '01 Nov. 9-10, 2001 Copyright 2001 ACM 1-58113-432-0/01/0011 pp. 105-114.
- "The Component Object Model" A Technical Overview Oct. 1994 Microsoft Corp. pp. 1-14.
- "Managing and Querying Multi-Version XML Data with Update Logging" DocEng '02 Nov. 8-9 2002 Copyright 2002 ACM 1-58113-594-7/02/0011 pp. 74-81.
- Zdonik S., "Object Management System Concepts," ACM, 1984, pp. 13-19.
- Bruce Halberg et al, "Using Microsoft Excel 97", Published 1997, Bestseller Edition, Pertinent pp. 1-9, 18-25, 85-89, 98-101, 106-113, 124-127, 144-147, 190-201, 209-210, 218-227, 581-590, 632-633, 650-655, 712-714.
- Leblond et al, "PC Magazine Guide to Ouattro Pro for Windows", pp. 9-11, 42-61, Ziff-Davis Press, Copyright 1993 by the LeBlond Group. 25pp.
- "Using Corel WordPerfect 9", Acklen and Gilgen, 1998, pp. 251-284, 424-434, and 583-586.
- "Using Microsoft Exel '97" Halberg et al., 1997, pp. 5-8, 21-22, 18-20, 99-101, 112-113, 125-126, 145-147, 196-199, 221-226, and 650-652.
- Microsoft Visual Basic 5.0 Programmer's Guide 1997; pp. 578-579; Redmond WA 98052-6399.
- Ron Mansfield, Excel 97 for Busy People Published by Osborn/Mcgraw-Hill 1997 pp. 48-50.
- "Excel Developer Tip, Determining the Data Type of a Cell" (available at <http://jwalk.com/ss/excel/tips/tip62.htm>), (May 13, 1998), 1.
- "Issue Notification", U.S. Appl. No. 10/961,313 (Apr. 1, 2009), 1 page.
- "Notice of Allowance", U.S. Appl. No. 12/323,832, (Dec. 29, 2009), 4 pages.

\* cited by examiner

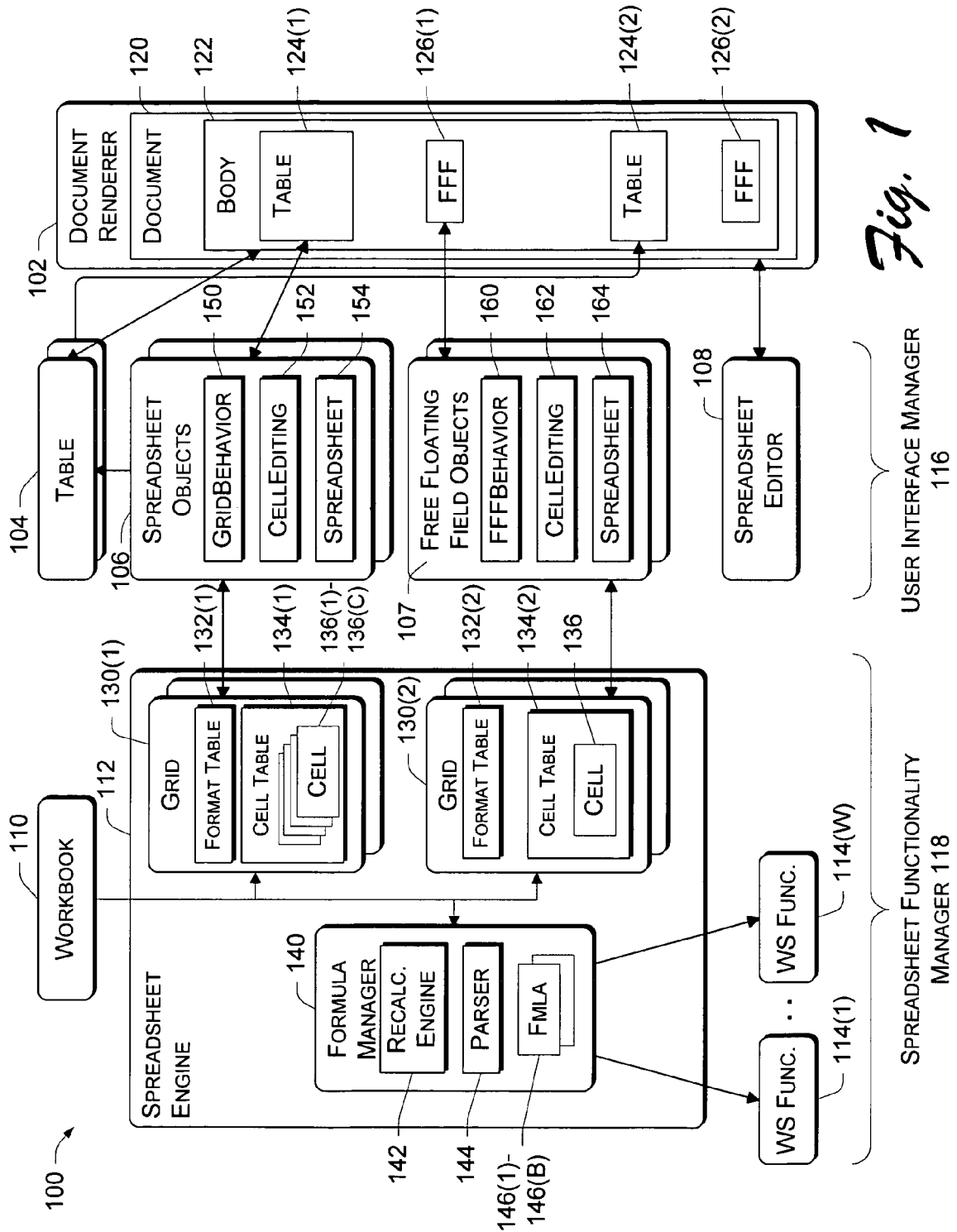


Fig. 1

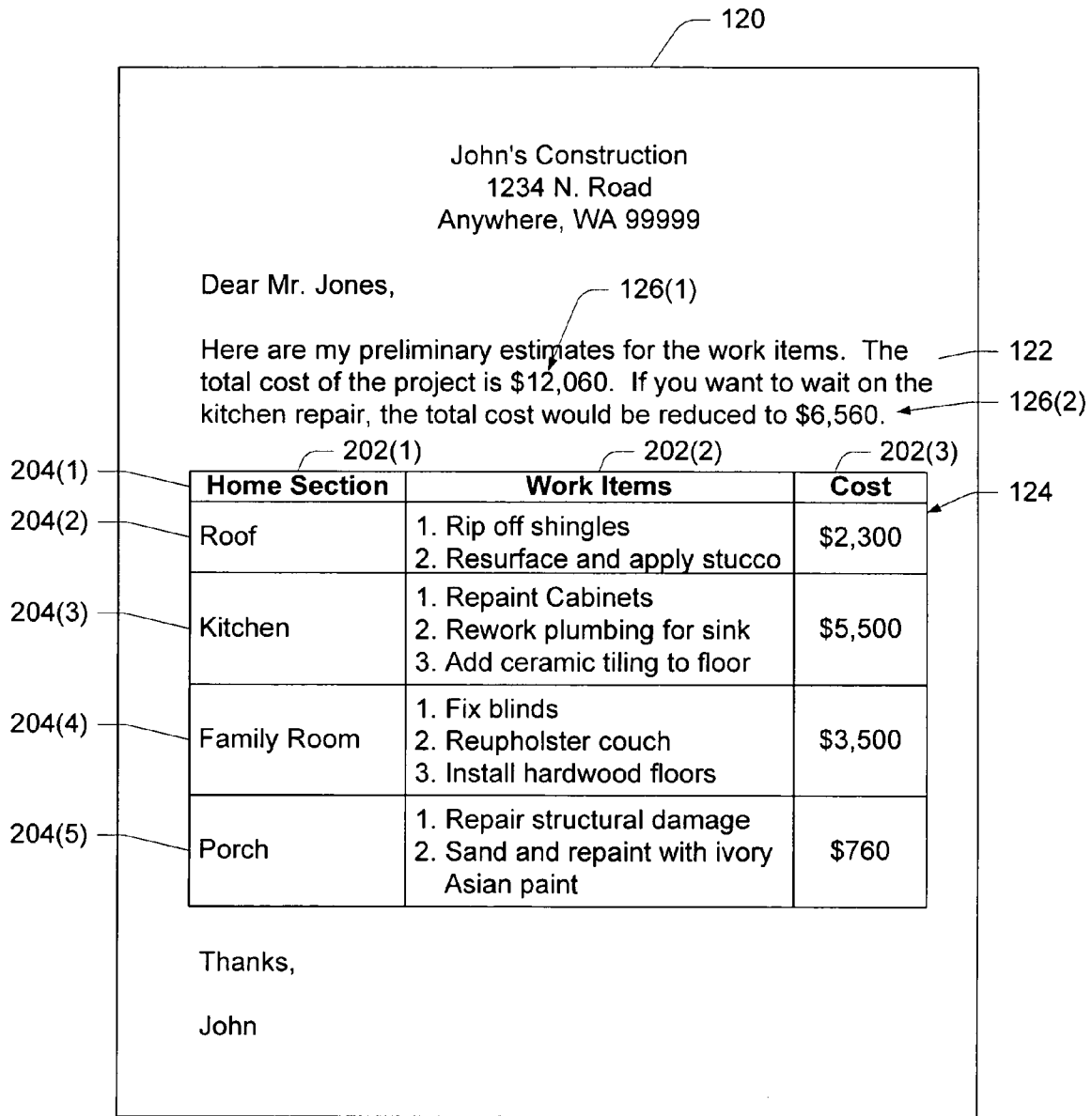


Fig. 2

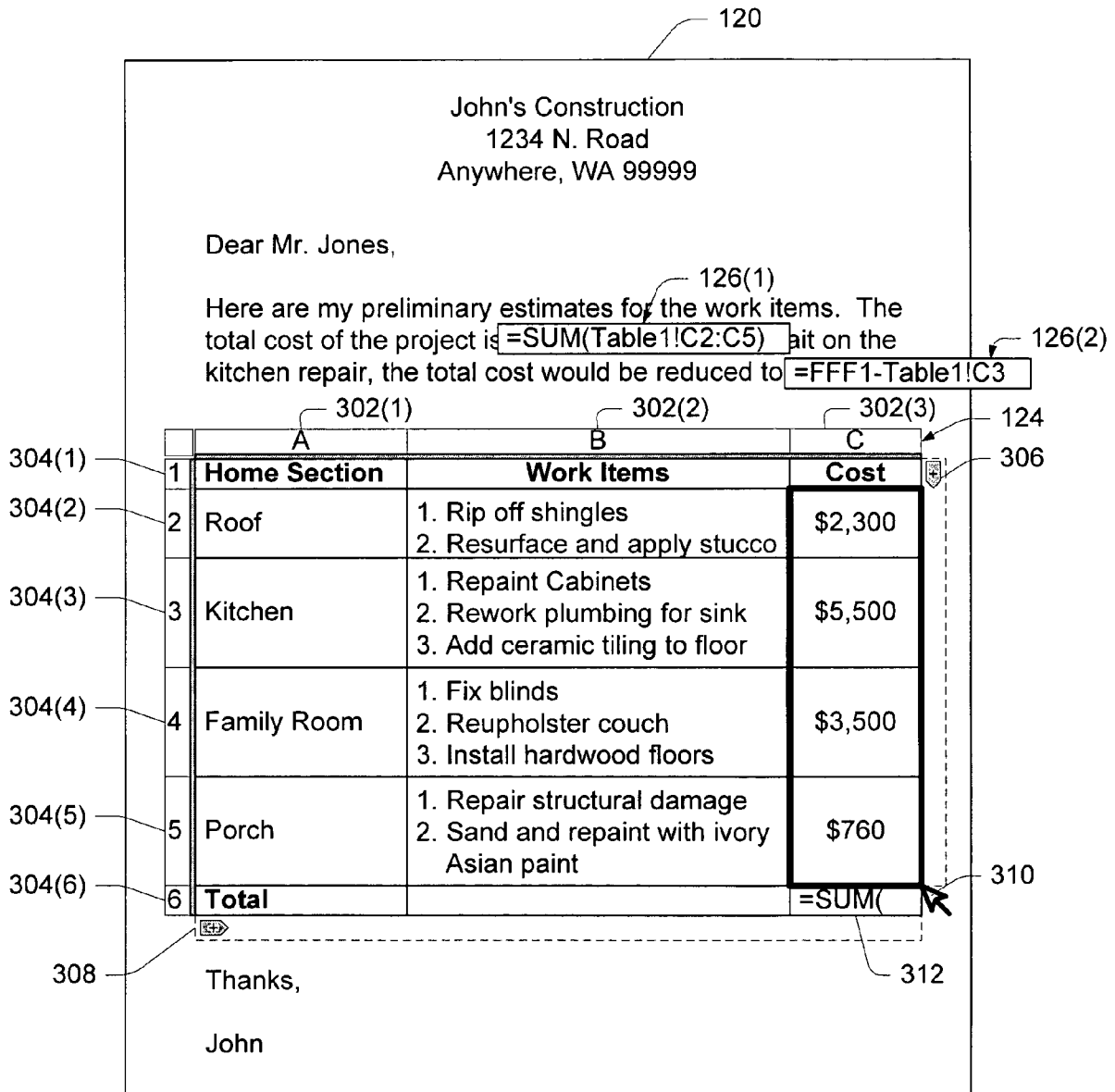
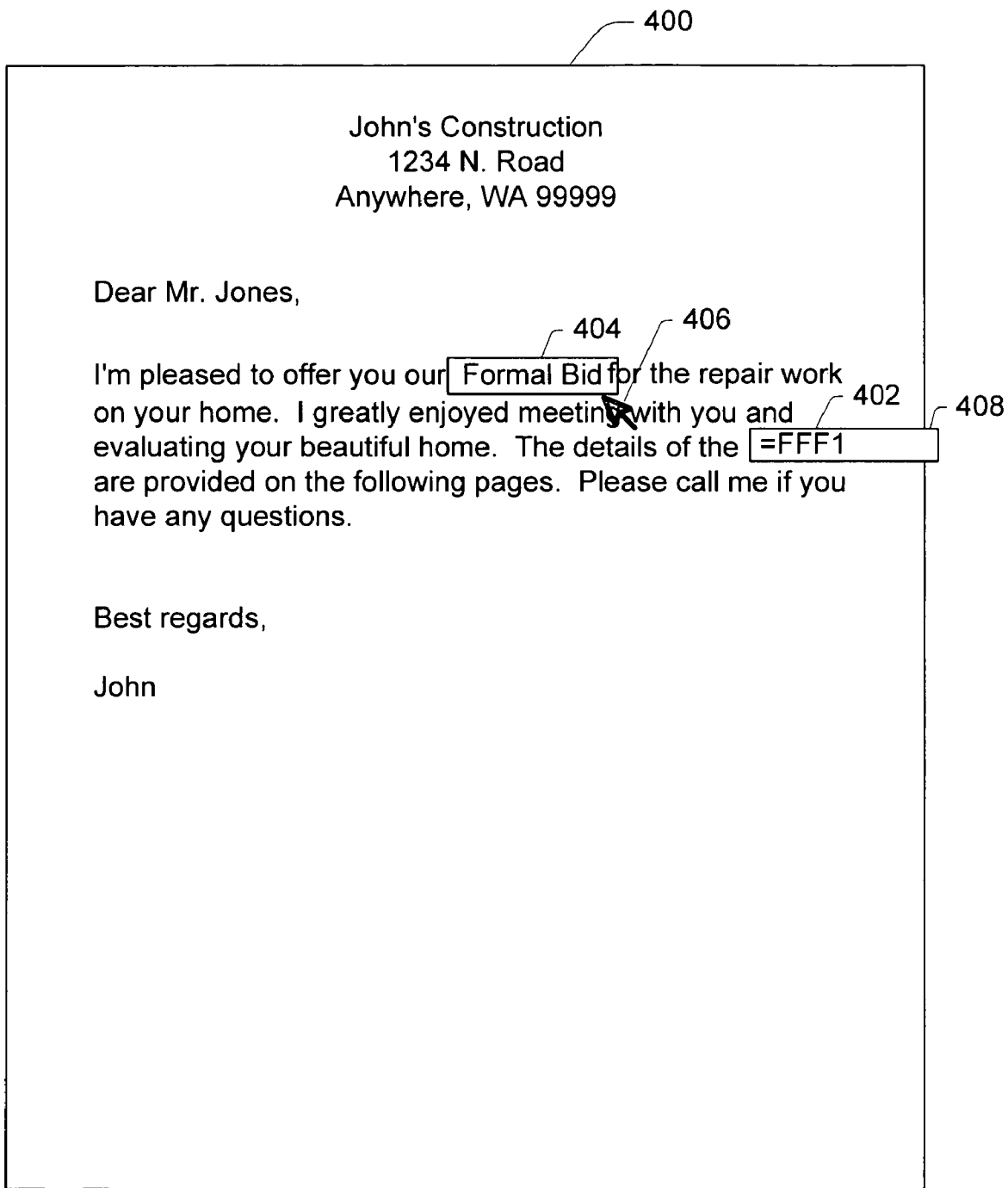


Fig. 3





*Fig. 4*

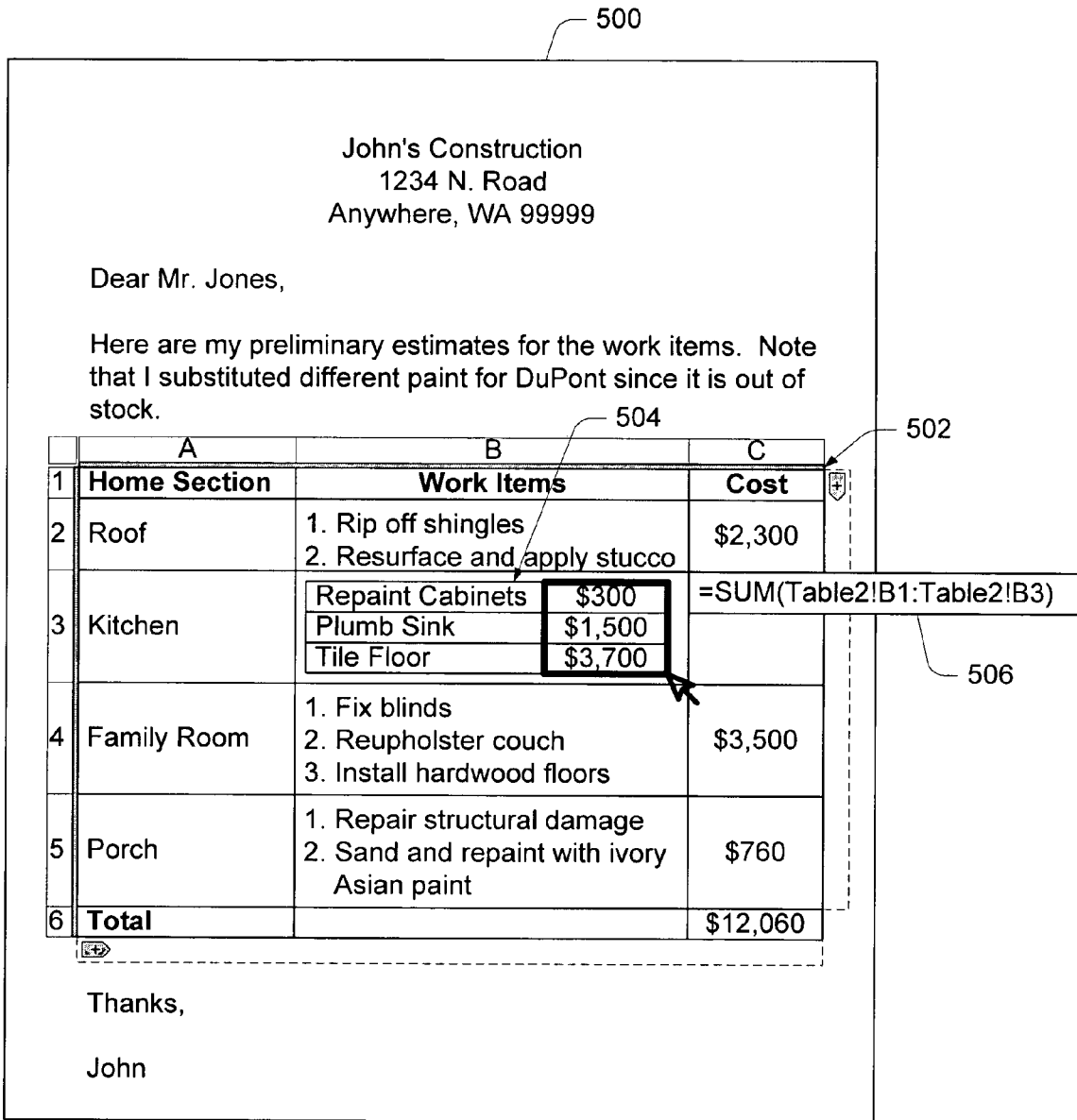


Fig. 5

600

John's Construction  
1234 N. Road  
Anywhere, WA 99999

Dear Mr. Jones,

Here are my preliminary estimates for the work items. The total cost is approximately  $=Table1!B6+Table2!B8$

602 → Table 1

Outdoor Work Items	Cost
1. Rip off roof shingles	\$300
2. Resurface and stucco	\$2,000
3. Repair porch damage	\$360
4. Paint porch	\$400
<b>Total</b>	<b>\$3,060</b>

The itemized cost for the outdoor work items are summarized in Table 1. Note that I substituted different paint for DuPont since it is out of stock.

604 → Table 2

The itemized cost for the indoor work items are summarized in Table 2.

Indoor Work Items	Cost
1. Repaint Cabinets	\$300
2. Plumb sink	\$1,500
3. Tile floor	\$3,700
4. Fix blinds	\$200
5. Reupholster couch	\$400
6. Install hardwood floors	\$2,900
<b>Total</b>	<b>\$9,000</b>

As you requested, the costs of pursuing only the roof and kitchen at this time are summarized in Table 3.

Big Items Only	Cost
Roof	\$2,300
Kitchen	\$5,500
<b>Total</b>	<b>\$7,800</b>

$=SUM(Table1!B2:Table1!B3)$

$=SUM(Table2!B2:Table2!B4)$

Table 3

Thanks, John

Fig. 6

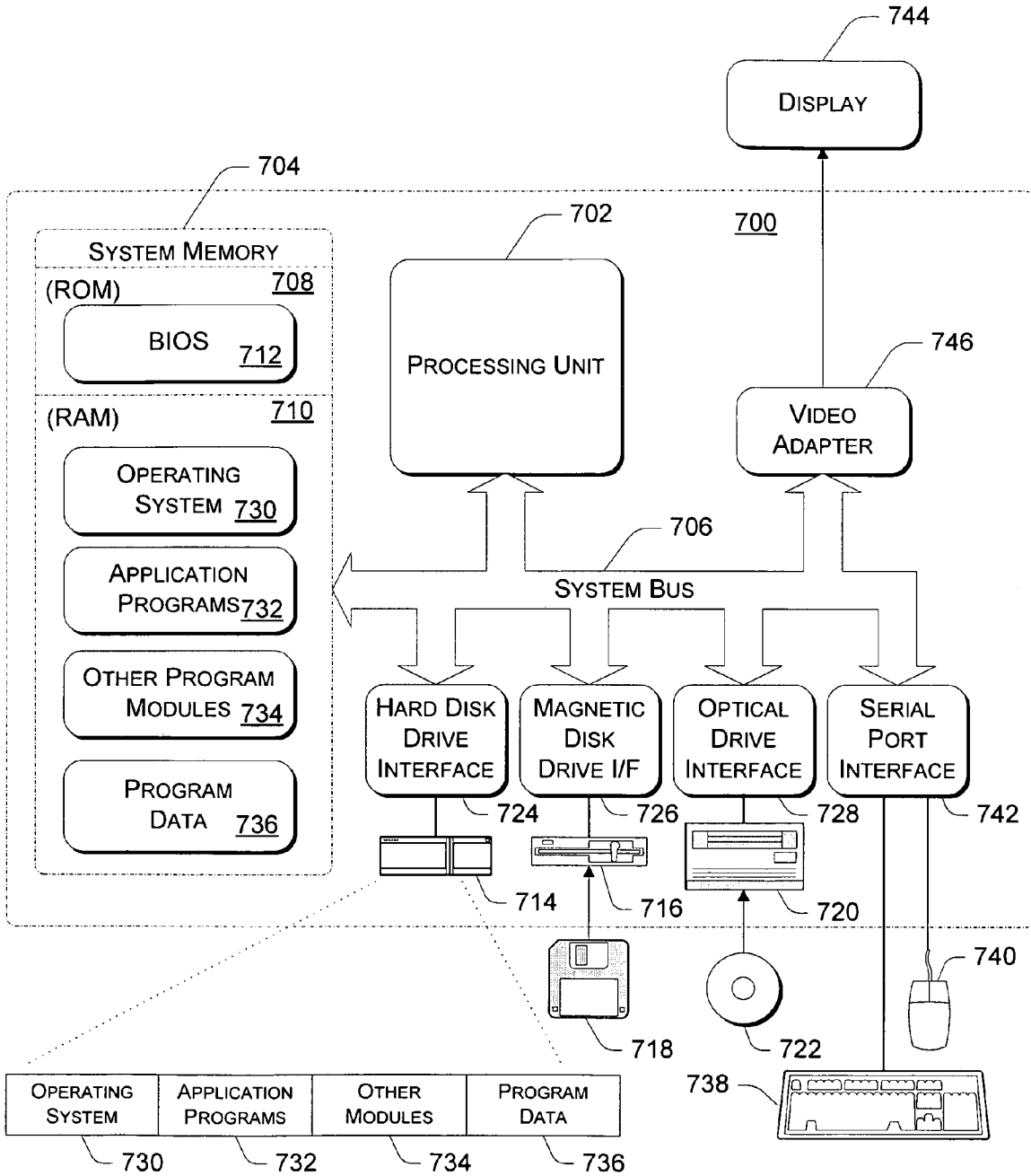


Fig. 7

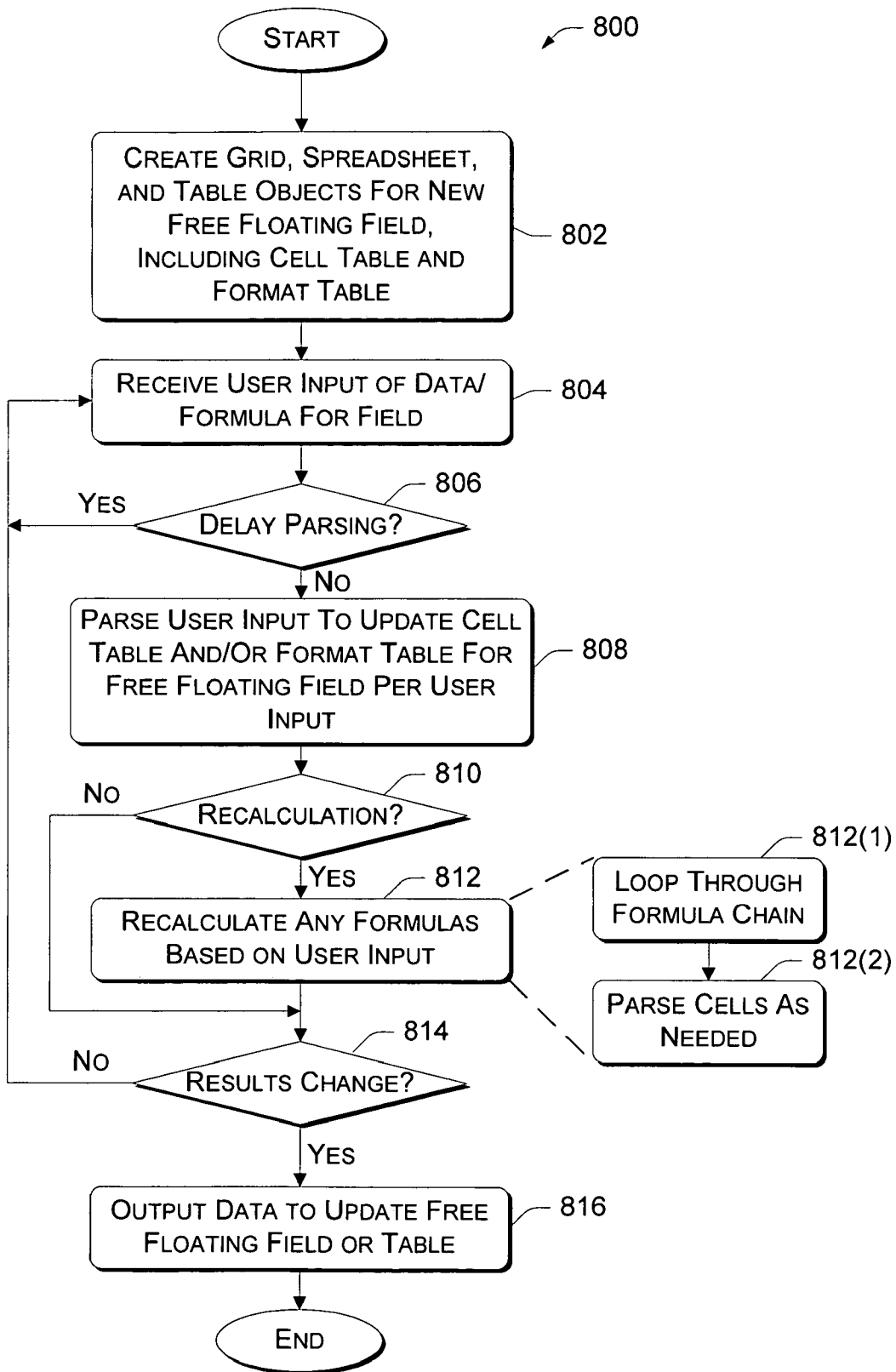


Fig. 8

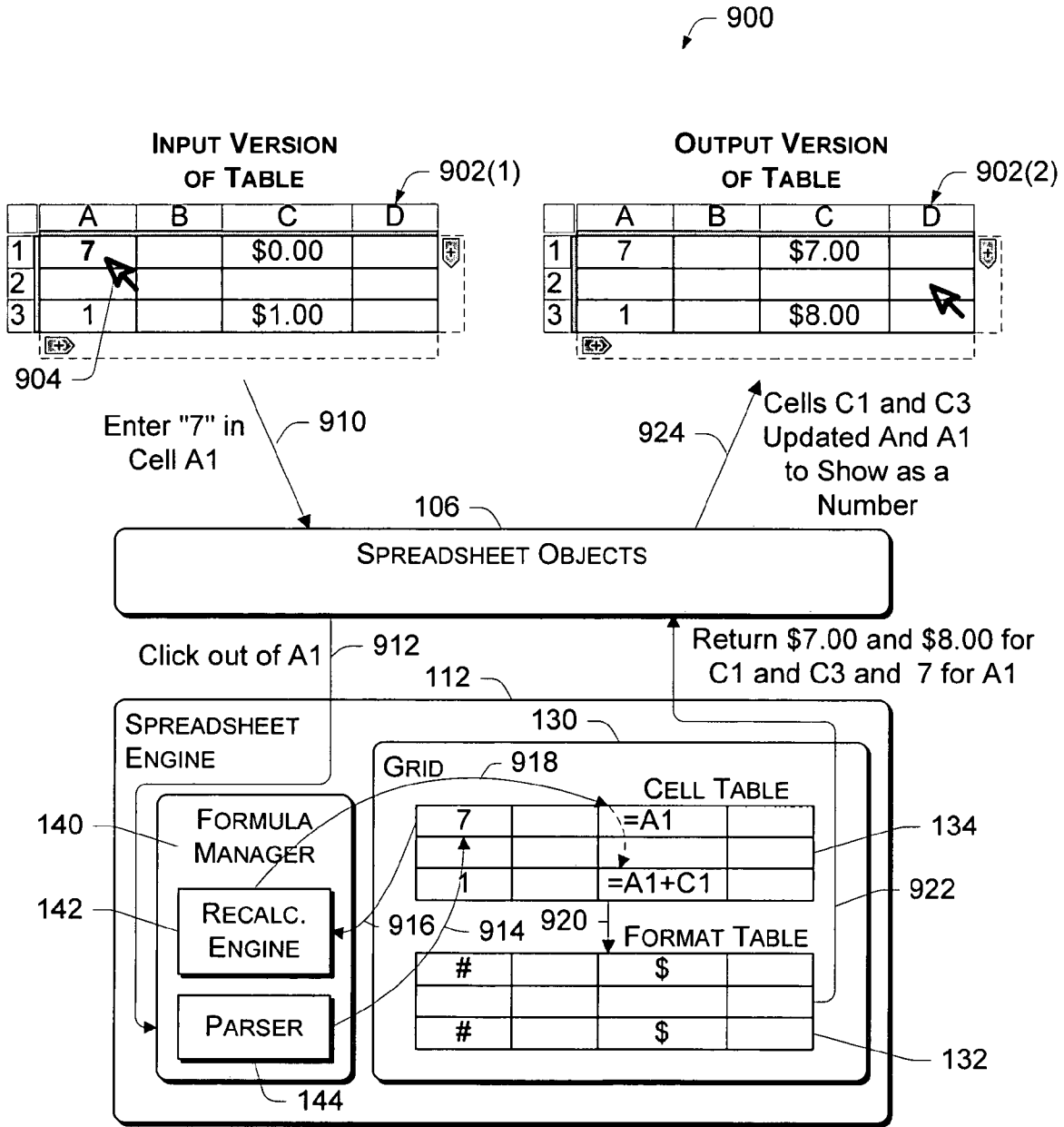


Fig. 9

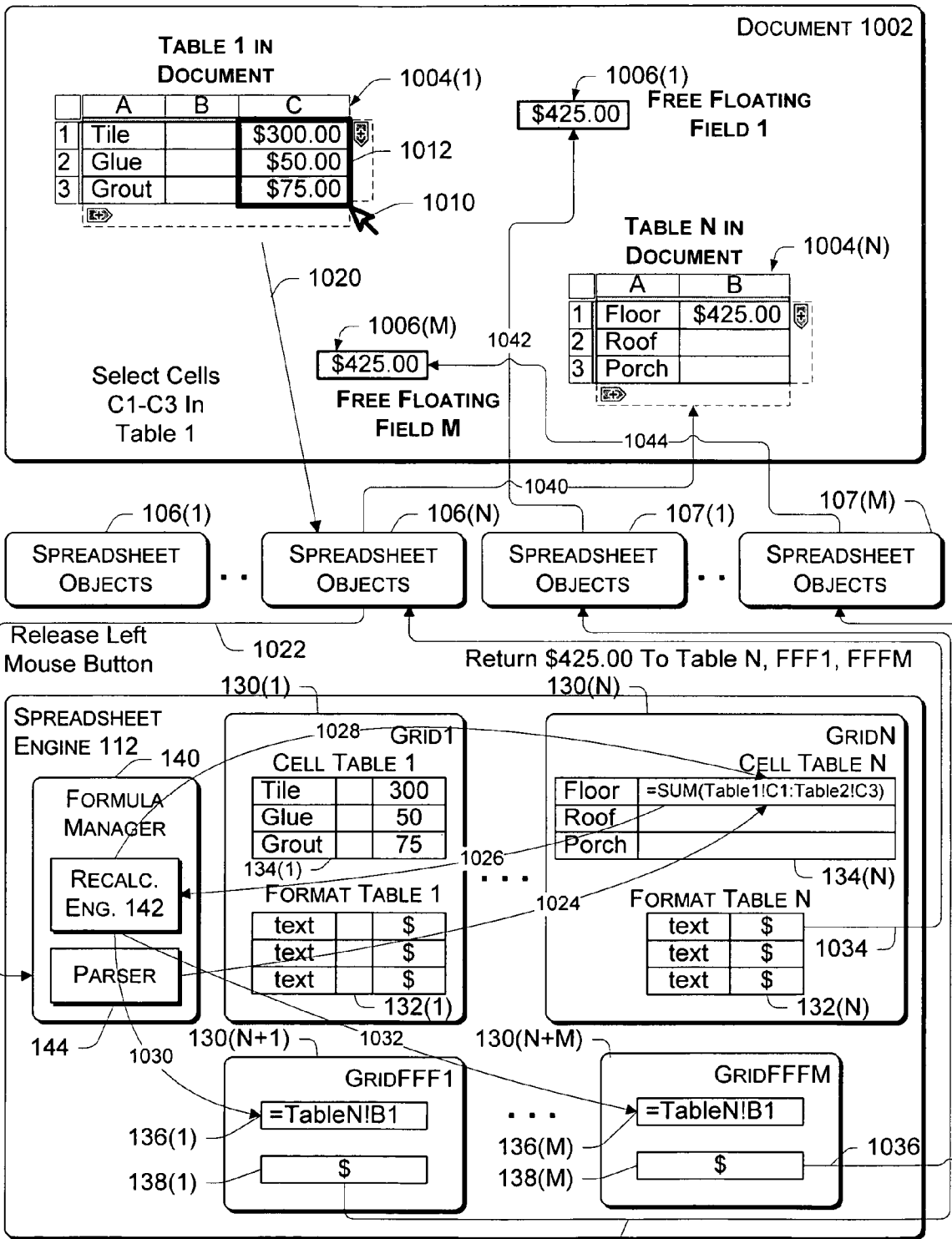


Fig. 10

1000

## SPREADSHEET FIELDS IN TEXT

## RELATED APPLICATIONS

This patent application claims priority to U.S. patent application Ser. No. 09/599,808, titled "Spreadsheet Fields In Text", filed on Jun. 21, 2000, commonly assigned herewith, and hereby incorporated by reference.

## TECHNICAL FIELD

This invention relates to computer programs, and particularly, to word processing and spreadsheet programs. More particularly, this invention pertains to an architecture and user interface for integrating individual spreadsheet-like cells into word processing text.

## BACKGROUND

Word processing and spreadsheet programs are two well-known and widely used software applications. Word processing programs permit users to draft letters, write books, and create other word-centric documents on a computer. Word processing programs are typically designed with the author in mind by offering tools and user interfaces that make writing easier, such as edit functions (e.g., cut, copy, paste, find, replace, etc.), spell and grammar checking, document formatting, and the like. Examples of word processing programs include "Word" from Microsoft Corporation and "WordPerfect" from Corel Corporation.

Spreadsheet programs enable users to create financial records, accounting spreadsheets, budgets, and other number-centric documents on a computer. Spreadsheet programs are developed with the accountant in mind, focusing on tools and user interfaces that simplify data entry and data manipulation. Spreadsheets typically offer such functionality as in-cell formulas, automatic recalculation as data changes, multi-sheet referencing, cell formatting according to data type (e.g., dates, currency, percentages, etc.), and the like. One example of a spreadsheet program is the "Excel" application from Microsoft Corporation.

In the beginning, spreadsheets and word processing texts were entirely separate from one another. There was essentially no integration. Computer users who wanted to create primarily word-based documents would select a word processing program, while users who wished to produce number-oriented documents turned to spreadsheet programs. Over time, however, word processing users expressed interest in incorporating numbers and a spreadsheet "look" into an otherwise word-dominated document.

To accommodate such crossover situations, word processing programs evolved to offer tables, a visual structure that could be used to hold and organize numbers and other types of data. Tables arrange data in columns and rows, thereby emulating the spreadsheet "look". Word processing users can insert a table, modify its layout, and change cell formats to achieve a specific visual appearance to their data. Some tables even support rudimentary functions, such as adding a set of contiguous cells.

While visually similar to spreadsheets, word processing tables do not support full spreadsheet functionality. For instance, a user is not able to insert functions into a table that automatically update anytime data is modified in the cells.

More recently, object-oriented programming and OLE technologies have been used to provide a richer integration experience. With OLE, word processing users who want greater functionality can embed spreadsheet objects into their

word processing documents, instead of tables. Essentially, this is akin to embedding an "Excel" spreadsheet (or other spreadsheet program) into a document running on the "Word" program (or other word processing program). The embedded object carries sufficient functionality to allow the user to enter formulas, format cells, recalculate functions, and do all of the things he/she would normally be able to do on a spreadsheet program.

Though the embedded spreadsheet visually resembles a table and provides the desired spreadsheet functionality, it logistically remains a separate program that must be invoked by the user. OLE requires that both types of application programs—a word processor and a spreadsheet—be installed on the computer. When the user wants to update the embedded spreadsheet, the user invokes the spreadsheet object by moving a mouse pointer to anywhere on the embedded object and double clicking the left mouse button (or via some other actuation mechanism). In response, an instance of the spreadsheet program is executed and the spreadsheet changes appearance from a "table look" to a reduced size spreadsheet program with numbered rows and lettered columns and program specific menus. In this state, the user can change functions, modify data, reformat the spreadsheet, and perform other spreadsheet tasks. When the user is finished, the user returns focus to the word processing document by moving the mouse pointer outside the spreadsheet object and single clicking the left mouse button.

While the OLE approach offers the full spreadsheet functionality within a word processing document, the process is somewhat sophisticated and typically performed by experienced users who are familiar with both spreadsheets and word processing programs. For novice or less experienced users, it may be confusing to see a table and not appreciate the difference between a word processing table and a full-functioning embedded spreadsheet object. From the user standpoint, different operations are used depending upon whether the visible structure is a table or a spreadsheet. Furthermore, common services such as text formatting, spell checking, and the like do not "tunnel" into the embedded OLE objects and thus, the user is forced to run such services for both the document and the embedded spreadsheet.

Thus, even though the final appearance may be visually similar, word processing tables and spreadsheets provide two completely separate mechanisms for displaying information.

A separate, but somewhat related problem, is that spreadsheet functionality has been traditionally limited to a grid. There has been no integration of spreadsheet capabilities into word processing text. When writing a document containing both text and a spreadsheet, all data and formulas are typically contained within the spreadsheet of the document. The text then references the values and formula results in the spreadsheet through sentences like, "The total cost of the project is identified in Table 1".

If the user actually wants to place a value or formula result in the text, the user manually enters the values directly into the text. For example, the user might write, "The total cost of the project is \$2,300, as identified in Table 1." Unfortunately, the value (e.g., \$2,300) is static text. If the user subsequently changes a value in the spreadsheet, thereby altering the total cost, the sentence remains unchanged. The user must remember the sentence and update it manually.

Some word processing programs (e.g., Microsoft Word) allow insertion of "fields" into text. Using fields, a user may enter dates, simple equations, and the like. However, these fields are independent structures that do not recalculate auto-



matically as one would expect for rudimentary spreadsheet functionality. Moreover, these fields tend to be difficult to edit.

Accordingly, there is a need to better integrate spreadsheet functionality into text.

With the rapidly growing popularity of the Internet, many documents delivered to and rendered on computers are written in markup languages, such as HTML (hypertext markup language). Markup languages can allow authors to easily construct a desired visual layout of the document. Some HTML documents provide tables that look and function as if they were integrated with the surrounding text. For instance, financial Websites commonly offer informative discussions on retirement planning, college savings, or buying a house and include with those discussions one or more tables that invite the user to fill in their personal financial information and goals. When the user finishes entering the data fields, the document appears to make on-the-fly calculations and present the results together with the discussions.

Despite the appearance of in-document calculations, the HTML document is nothing more than an electronic form that receives data entered by the user. When the user completes entry, the HTML document is submitted to a Web server that extracts the user data and makes the appropriate financial calculations. The server places the results in another HTML document and serves the document back to the user's computer. The submit and reply occur very quickly, so the user may be unaware that the HTML document holding the results is different than the HTML document into which he/she initially entered data. In any event, the traditional separation between spreadsheets and text/tables has persisted into the Web-based era.

### SUMMARY

A system architecture integrates spreadsheet functionality into text and tables. The architecture allows insertion of discrete individual fields, referred to as "free floating fields", inline with normal textual sentences. In an HTML document, for example, the free floating fields are HTML elements constructed along with text elements and rendered together as an integrated document. Once rendered, the free floating fields present contents that resemble normal text.

The free floating fields offer spreadsheet functionality, including the ability to handle complex formulas, reference values in a separate free floating field or table, and automatically recalculate the formulas when a value changes. The values and formula results can also be formatted (e.g., numbers, date, times, currency, etc.), like a spreadsheet, while remaining part of the normal text. The results of formulas and data values can also be formatted like normal text, using familiar text formatting tools.

Underlying the user interface, one implementation of the architecture separates data handling functions from presentation functions. The architecture includes a user interface manager to manage how the free floating fields appear in a document (e.g., selection, cut, copy, paste, etc.) and to facilitate user entry of formulas and values into the free floating fields. The architecture also has a spreadsheet functionality manager to manage the spreadsheet functions for the free floating fields, such as recalculation, formula handling, referencing, and the like.

The bifurcated architecture supports cross-referencing in which one free floating field references text or data in another free floating field, even though the fields are separate from one another. As part of the cross-referencing, the architecture allows a user to reference other fields using a reference edit

operation (e.g., move pointer to the field and click to capture content in the field). The architecture further accommodates automatic universal recalculation throughout all fields in the document. Thus, when a user modifies the contents of one field, the architecture automatically recalculates any formulas in any free floating fields affected by the modification.

The architecture also permits a user to reference textual content via free floating fields. When entering a formula in a first free floating field, the user can select a range of normal text. A second free floating field is automatically created around the range of text and a reference to that second free floating field is automatically inserted into the formula in the first free floating field. Upon confirmation, the formula is calculated to insert the referenced text into the sentence. As the text in the second free floating field is updated, the formula in the first field is automatically recalculated.

Many other architectural features and UI features are described.

### BRIEF DESCRIPTION OF THE DRAWINGS

FIG. 1 is a block diagram of an exemplary architecture for integrating spreadsheet functionality into word processing text and tables.

FIG. 2 illustrates a screen display of a rendered document having two free floating fields and a single table that are capable of spreadsheet functionality. In FIG. 2, the free floating fields exhibit a normal "text look" and the table exhibits a "table look" during a non-editing mode.

FIG. 3 illustrates a screen display of the rendered document, where the free floating fields exhibit a "cell look" and the table exhibits a "spreadsheet look" during an editing mode.

FIG. 4 illustrates a screen display of another rendered document, where a free floating field references text in the document.

FIG. 5 illustrates a screen display of yet another rendered document having multiple tables. In particular, FIG. 5 shows nested tables, where one table is inserted into a cell of another table, and the ability to reference from one table to the other table.

FIG. 6 illustrates a screen display of another rendered document having multiple tables and a free floating field that appear in an edit mode.

FIG. 7 is a block diagram of an exemplary computer that implements the architectures of FIGS. 1 and 4.

FIG. 8 is a flow diagram of a process implemented by the architecture of FIG. 1.

FIG. 9 is a diagrammatic illustration of how a user interface table in a rendered document and underlying functional components in the architecture work together during a recalculation operation.

FIG. 10 is a diagrammatic illustration of how multiple free floating fields and UI tables and underlying functional components in the architecture work together during a cross-table reference edit operation and a concurrent recalculation operation.

### DETAILED DESCRIPTION

This disclosure describes an architecture that integrates spreadsheet functionality into word processing text. The architecture allows insertion of discrete individual fields, referred to as "free floating fields", inline with normal textual sentences. The free floating fields offer spreadsheet functionality, including the ability to handle complex formulas, reference values in a separate free floating field or table, and

automatically recalculate the formulas when a referenced value changes. The values and formula results can also be independently formatted (e.g., numbers, date, times, currency, etc.), like spreadsheet cells, while remaining part of the normal text of a document. The results of formulas and data values may also be formatted like normal text, using familiar text formatting tools.

The architecture also supports integration of spreadsheet functionality into word processing tables. The tables resemble a spreadsheet when being edited, and a table when not being edited. The tables enjoy the benefits of word processing tables (e.g., size and shape formatting, spell and grammar checking, etc.) as well as the benefits of spreadsheets (e.g., complex formulas, sorting, recalculation, etc.). The architecture also allows cross referencing among tables and free floating fields such that, when the content of one table cell or free floating field is modified, the architecture automatically recalculates any formulas in all tables and free floating fields that are affected by the modification. With this architecture, spreadsheet functionality is no longer constrained to grids, but is available in customary text and across table boundaries.

For discussion purposes, the architecture is described in the context of creating tables, text, and free floating fields in a document written in a markup language (e.g., HTML). In this manner, the user is afforded the rich HTML formatting options of both text and tables, including table layout changes (e.g., merging and splitting cells), as well as the calculation and formatting features specific to data that are traditionally associated only with a separate spreadsheet application. However, it is noted that the architecture may be useful in other document types that are not rooted in a markup language.

#### Architecture

FIG. 1 shows an exemplary architecture **100** that integrates spreadsheet functionality into word processing text. The architecture **100** may be implemented on a standalone computer, a network server computer, a network client computer, or distributed at both the server and client. The architecture **100** includes a document renderer **102**, one or more sets of table objects **104**, one or more sets of spreadsheet objects **106**, one or more sets of free floating field objects **107**, a spreadsheet editor **108**, a workbook **110**, a spreadsheet engine **112**, and one or more non-core worksheet functions **114(1)-114(W)** that may be optionally used by the spreadsheet engine **112**.

The architecture **100** separates data handling functions from presentation functions of the integrated spreadsheet functionality. In this manner, the architecture may be characterized as a cooperation of two system managers: a user interface (UI) manager **116** and a spreadsheet functionality manager **118**. The UI manager **116** manages how the free floating fields and tables appear in a document and facilitates such tasks as table resizing, selection, cut, copy, paste, split, merge, table formatting and so on. The UI manager **116** includes the table object **104**, the spreadsheet objects **106**, and the spreadsheet editor **108**.

The spreadsheet functionality manager **118** manages the spreadsheet functions for the table and free floating fields, such as recalculation, formula handling, sorting, referencing, and the like. The spreadsheet functionality manager **118** includes the workbook **110**, the spreadsheet engine **112** and worksheet functions **114**. With the bifurcated architecture, the spreadsheet functionality manager **118** is not concerned with the table layout or other visual features, and the UI manager **116** is not concerned with data management, formulas, and recalculation processes.

The bifurcated architecture **100** is advantageous in that it supports cross-referencing among the free floating fields and tables. It also allows reference editing during formula entry to allow convenient selection of other fields or cells and capturing of their contents as references used in the formula. The architecture further facilitates automatic universal recalculation of any formulas throughout all free floating fields and tables in the document that are affected by user modification of a single reference. These goals could also be achieved using different, non-bifurcated architectures.

A document **120** is constructed and rendered on the document renderer **102**. The document **120** combines a text-based body **122**, one or more tables **124(1)** and **124(2)**, and one or more free floating fields (FFF) **126(1)** and **126(2)**. Each free floating fields **126** is akin to a single cell of a table that may be inserted anywhere in the document, including in the middle of a text-based body.

For discussion purposes, the document **120** is written in a markup language, such as XML (extensible markup language). XML documents can be transformed using XSL (extensible stylesheet language) and rendered directly as HTML (hypertext markup language). In this case, the renderer **102** may be implemented as a browser or other application that handles and renders HTML documents. The tables **124** are thus rendered as HTML tables. Examples of various documents that contain integrated spreadsheet functionality into text are illustrated in FIGS. 2-6.

With continuing reference to FIG. 1, the table and spreadsheet objects **104** and **106** provide editing functionality for the table **124**, including such functions as table resizing, selection, cut, copy, paste, split, merge, table formatting, and a host of other rich spreadsheet events. The free floating field objects **107** provide similar editing functionality for the free floating fields **126**, with the exception that certain functions do not make sense in the context of a free floating field. For example, it does not make sense to "split" a free floating field as one would split a table cell.

The spreadsheet engine **112** provides the spreadsheet functionality for the table **124** and free floating fields **126**, including such functions as formula creation, reference editing, recalculation, and the like. Architecturally, the spreadsheet components are separate from the word processing table and text, although the spreadsheet relies on the table and free floating fields and the table and free floating fields provide special notifications and events to help the spreadsheet. This allows either component to add additional functionality without directly affecting the other component.

The spreadsheet engine **112** has a grid object for each table and free floating field in the document **120**, as represented by grid objects **130(1)** and **130(2)**. The grid objects **130** receives events indicative of user activity in the table **124** and free floating fields **126** and coordinates actions among various objects. The workbook **110** initially creates the tables **124** and free floating fields **126**, and subsequently tracks all grid objects **130** to resolve any cross-table or free floating field referencing. Upon creation, a grid object **130** registers with the workbook **110** so that it can participate when tables and free floating fields are updated. The grid object **130** keeps an interface to the spreadsheet behavior **106** and the free floating field behavior **107** to fetch values from the HTML tree maintained at the renderer **102**.

Each grid object **130** maintains two structures: a format table **132** and a cell table **134**. The format table **132** holds information about the data format of each cell in the table **124** or associated free floating field **126**. For instance, the cell or field may contain dates, numbers, dollar amounts, percentages, and so forth. In the example shown in FIG. 3, the format

table **132** would contain information that cells A1-A6, B1-B6, and C1, are text and cells C2-C6 are formatted as currency in U.S. dollars. Also in FIG. 3, the format table **132(2)** for free floating field **126(1)** contains information that the field is formatted as currency in U.S. dollars.

The cell table **134** stores the actual data for each cell in the table **124** or an associated free floating field **126**, such as text, values, and formulas. A cell table **134** stores pointers to one or more cells that physically store the data. A cell table associated with a table, such as cell table **134(1)**, contains multiple cells **136(1)-136(C)**, one for each cell in the table. A cell table associated with a free floating field, such as field **134(2)**, contains only one cell **136** because the free floating field **126(1)** can be thought of as a table with only one cell.

Each cell **136** is an object containing the parsed value of the cell and a reference to complete information about the cell. If the cell contains text or numeric data (e.g., cells A1-A6, B1-B5, and C1-C5 in FIG. 3), it is stored directly in the object. Formulas, such as the summation formula in cell C6 of FIG. 3, are stored as pointers to the appropriate formula object maintained by the formula manager **140** (discussed below).

The spreadsheet engine **112** includes a formula manager **140** to handle all formulas and parsing duties for formulas, data values, and references (e.g., D4:E23). The workbook **110** serves as the linkage between the formula manager **140** and the registered grids **130**. The formula manager **140** maintains a recalculation engine **142** that performs recalculation of all formulas in response to event changes in the table or free floating fields. In one implementation, the recalculation engine **142** maintains the formulas for a document in a bi-directional linked list, sometimes referred to as the "formula chain". Following a recalculation event (e.g., user entry of a new data value or new formula), the recalculation engine **142** traverses the list, evaluating formulas that may be affected by the event.

If the current formula depends on other formulas that have not yet been evaluated, the current formula is moved to the end of the list. After one recalculation pass, the formula list is organized in natural order and will not need to be reordered during subsequent recalculations unless new formulas are added. If recalculation comes to a formula that has already been bumped to the end of the list and discovers that this formula still relies on not-yet-calculated dependencies, the formula contains a circular reference. In this case, the recalculation engine returns a circular error.

The formula manager **140** also has a parser **144** that parses the formulas. In one implementation, the parser **144** is a recursive descent parser that extracts tokens from a stream and appends them to an array of character-size operation types and a parallel array of variant operands. When done, the parser **144** creates a new formula object **146** and gives it the two arrays of parsed information. The formula manager **140** therefore maintains one or more formula objects **146(1)-146(B)** that contain formula information, including the parsed formula expression returned by the parser **144**, the current result, the type of formula, and the current formula state.

In one implementation, there are three types of formulas: normal, semi-calculation, and non-calculation. The normal formula is reevaluated only when its dependencies change. The semi-calculation formula is reevaluated every time the recalculation engine **142** performs a recalculation operation. The non-calculation formula is never evaluated at all. Non-calculation formulas are a special formula type for handling nested tables (i.e., a table within a table) and nested free floating fields.

Consider the case of an inner table nested inside a cell of an outer table. If the inner table contains a formula that changes

to a different value following recalculation, the value of the outer table will also change. Such a dependency is not encoded anywhere, since there is no formula attached to the outer table. In such cases, a non-calculation formula is set to re-fetch the resulting value from the inner calculation. Thus, it participates in the normal dependency management of recalculation and all references to the outer table are updated when appropriate.

In one implementation, the formula objects **146** are owned by a COM wrapper (not shown), which is in turn held onto by a cell object **136** in the grid **130** where the formula resides. The formula objects **146** are themselves part of the bi-directional linked list of formulas maintained by the recalculation engine **142**. The formula objects **146** contain references to the table row and column (or the free floating field) they are stored in and to the cell object **136** in grid **130**. The references allow the recalculation engine **142** to travel down the recalculation chain with formulas from several tables and easily determine to which table a given formula belongs. Many operations, from formula saving to table deletion, depend on this ability to traverse the chain.

The formula manager **140** also parses referenced cell groups. As examples, the formula manager **140** parses "A5" as a cell reference, "D4:E23" as a compound rectangular reference, "\$F\$30" as an absolute reference, "Table5!D5" as a cross-table reference, "Field3" as a whole-table cross-table reference, "A5:D5 B3:B6" as an intersection, and "D3,E4" as a union.

The non-core worksheet functions **114(1)-114(W)** are optional elements. Examples of such functions include analysis functions, statistical functions, and trigonometric functions. The modular architecture **100** makes it flexible to remove unwanted worksheet functions or add new worksheet functions.

The spreadsheet objects **106** and free floating field objects **107** are counterparts to their corresponding grid objects **130(1)** and **130(2)** and are located outside of the spreadsheet engine **112**. There is one pair of a spreadsheet object **106** and a grid object **130(1)** per table **124** and one pair of corresponding free floating field behavior **107** and grid object **130(2)** per free floating field **126**.

The spreadsheet objects **106** and free floating field objects **107** define behaviors that receive events from the document renderer **102**, process them, and pass the events onto the corresponding grid objects **130(1)** and **130(2)**. In response to the events, the grid objects **130(1)** and **130(2)** update the cell data in cell tables **134(1)** and **134(2)** and/or formatting information in format tables **132(1)** and **132(2)**.

The spreadsheet behavior **106** has three objects: GridBehavior **150**, CellEditing **152**, and Spreadsheet **154**. The GridBehavior object **150** provides a layer of abstraction between the grid object **130** and individual HTML table cells and allows the grid object **130** to access HTML values and styles. The GridBehavior object **150** wraps the HTML elements in a common interface so that the grid **130** does not need to know the particular structure of the HTML table. Additionally, the GridBehavior object **150** manages table-specific portions of a "reference edit" operation.

The CellEditing object **152** and Spreadsheet object **154** interact directly with an HTML tree and the table behavior **104** to provide the grid **130** with events. The Spreadsheet object **154** is responsible for recording undo records for actions affecting the spreadsheet.

The CellEditing object **152** manages user-level editing of cells. It processes events related to user edits of in-cell data values and provides some editing user interface (UI) elements, including the formula edit box that permits user edits

of formulas. When editing a formula, a floating formula edit box is provided above the cell's location and resized as necessary to accommodate the formula. The localized edit box eliminates a potential UI problem of forcing the user to fit the entire formula into the table cell, which may cause the table to resize strangely as the user clicked into and out of the cell.

The CellEditing object **152** also supports the reference edit operation when the formula edit box is presented. As noted above, the reference edit operation allows the user to visually reference cells using a mouse pointer (or other focus mechanism) and in response, inserts a reference to that cell data in the current formula edit box. The formula edit box is described below in more detail. The CellEditing object **152** is only present when a cell is being actively edited.

The free floating field behavior **107** has three objects: an FFFBehavior object **160**, a CellEditing object **162**, and a Spreadsheet object **164**. The CellEditing object **162** and Spreadsheet object **164** are essentially identical to those in the spreadsheet behavior **106**. For example, the CellEditing object **162** processes events related to user edits of free floating fields and provides some editing user interface (UI) elements, including the formula edit box that facilitates user entry and editing of formulas. As with table cells, when editing a formula in a free floating field, a floating formula edit box is provided above the free floating field and resized as necessary to accommodate the formula.

The FFFBehavior object **160** takes the place of GridBehavior object **150** and the Table object **104** in the context of free floating fields. Like the Table object **104**, the FFFBehavior object **160** monitors the document for changes to the free floating field, although these are much more limited than in the case of a table. Like the GridBehavior object **150**, the FFFBehavior object **160** provides an interface for the grid object **130(2)** and manages "reference edit" operations for the free floating field.

The spreadsheet editor **108** handles top-level duties such as inserting a table or a free floating field and routing commands to the appropriate table based on the current selection in the document **120**. The editor **108** also creates and manages the workbook **110**.

The integrated spreadsheet table and free floating field model eliminates the need for the user to choose the structure of data within a document prior to creating that document. Historically, if the user needed more control over the presentation of the tabular data, the user tended to select a word processing application. On the other hand, if the user required computations over the data, the user typically chose a spreadsheet application. The integrated architecture allows the user to combine several different types of data within one document.

Additionally, by integrating spreadsheet functionality inside a table and inline text fields, the user can build the document as they want. In spreadsheet applications, the user is restricted to the grid layout for all document content. In the integrated architecture, users can create a rich document that contains text integrated with multiple tables and multiple free floating fields, each with data that can be formatted as values and used in calculations throughout different tables and fields.

Examples of Documents with Integrated Spreadsheet Functionality

FIG. 2 shows an example document **120** that has text body **122**. In the FIG. 2 example, the document **120** is a letter written to Mr. Jones describing various home improvement projects and the costs associated with the projects. A single table **124** is situated in the text body. In the depicted non-

editing view, the table **124** resembles a standard word processing table with three columns **202(1)-202(3)** and five rows **204(1)-204(5)**.

Two free floating fields **126(1)** and **126(2)** are inserted in the text body **122** inline with the text. The free floating fields **126** appear as normal text in the document **120**. For instance, the second sentence recites, "The total cost of the project is \$12,060". The displayed value "\$12,060" is a result of a formula in the underlying free floating field, which is currently hidden in this view. The formula sums the project costs listed in the table **124**.

FIG. 3 shows the same document **120** during editing, where the table **124** and free floating fields **126(1)** and **126(2)** are shown as they would look upon selection for editing. Notice that table **124** now "looks" like a spreadsheet more than a traditional table. The table **124** has integrated column headers **302(1)**, **302(2)**, and **302(3)**, as well as integrated row headers **304(1)-304(6)**. The table **124** has a column expansion control **306** and a row expansion control **308** to permit easy expansion of the table.

It is noted that FIG. 3 is merely an illustration for discussion purposes. Typically, only one of the fields or the table is edited at a time, and hence that field or table exhibits the spreadsheet look (not all three as shown in FIG. 3). Thus, selecting the table for editing invokes the column and row headers **302** and **304**. Similarly, selecting a free floating field containing a formula would **11** display the formula edit box. If, on the other hand, a free floating field does not contain a formula it will be selected in the same manner as all surrounding text is selected.

In this example, the user has added a row to the table and is entering a summation formula in cell C6 using a reference edit operation. With a mouse pointer **310**, the user references an array of cells C2 through C5 for entry into the formula. Upon confirmation (e.g., releasing the left mouse button), a reference to the cells C2-C5 are inserted into the summation formula in cell C6 and after clicking out of the cell the formula is calculated to add the dollar amounts in column C. The result of \$12,060 is inserted into cell C6.

The free floating fields **126(1)** and **126(2)** contain formulas that reference values and/or formulas located elsewhere in the document **120**. The first free floating field **126(1)** contains a formula that sums the dollar amounts in cells C2-C5 of the table **124**, or "=SUM(Table1!C2:Table1!C5)". The second free floating field **126(2)** contains a formula that references both the first free floating field **126(1)** and a value in the table. Namely, the formula in the second free floating field **126(2)** computes the difference between the results of the formula in the first free floating field **126(1)** and the cost of the kitchen repair in cell C3, or "=FFF1-Table1 !C3".

If a value in cells C2-C5 in the table **124** is modified, the free floating fields **126(1)** and **126(2)** are automatically updated to reflect the modification. For instance, suppose the user modifies the cost of the family room in cell C4 from \$3,500 to \$4,000. As a result of this change, the formula in table cell C6 is automatically recalculated to yield \$12,560, the formula in the first free floating field **126(1)** is automatically recalculated to yield \$12,560, and the formula in the second free floating field **126(2)** is automatically recalculated to yield \$7,060.

FIG. 4 shows another example of a document **400** in which a free floating field **402** is used to reference text, rather than data values. In this case, free floating fields enable a new mechanism for the reference edit operation. As shown in FIG. 3, the typical reference edit operation allows entry of formula references into a spreadsheet by pointing at (i.e., clicking on) a referenced cell or range of cells while editing the formula.

The referenced cells are highlighted automatically and the correct reference to them is inserted into the formula. Free floating fields extend the reference edit operation to allow a range of normal text in a document to be referenced in a formula.

In contrast to this typical reference edit operation, the free floating field **402** in document **400** contains a formula that references a text range **404**. Using a mouse pointer **406**, the user selects a range of normal text **404** and the text is highlighted. A new free floating field is automatically created around the range of text **404** and a reference to that new free floating field, FFF1, is automatically inserted into the formula being edited within the formula edit box **408**. In this example, the edited formula is in free floating field **402**; however, in other cases, the formula may be in a table. Upon confirmation (e.g., pressing the return key), the formula is calculated and the referenced text "Formal Bid" is inserted into the sentence as part of the normal context flow.

If the referenced text **404** is modified, the free floating field **402** is automatically updated to reflect the modification. For instance, suppose the user changes "Formal" to "Final". As a result, the free floating field **402** is automatically recalculated to hold the words "Final Bid".

FIG. 5 shows a document **500** that contains a first or outer table **502** and a second or inner table **504** nested within cell B3 of the outer table **502**. The ability to nest tables is one feature of this architecture that conventional spreadsheet programs do not provide. FIG. 5 further illustrates a reference edit operation across table boundaries in which the inner table **504** is being referenced for insertion into a formula in cell C3 of the outer table **502**.

It is noted that the inner table **504** may be replaced by a free floating field, akin to a nested one cell table. Moreover, the outer table **502** may be replaced by a free floating field. In this manner, one or more free floating fields may be nested within one or more table cells, an entire table may be nested within a free floating field, and one or more free floating fields may be nested within one or more other free floating fields.

FIG. 6 shows a document **600** having three tables **602**, **604**, and **606**, and a free floating field **608**. Document **600** illustrates a situation where multiple tables and fields can cross-reference one another.

The many features of the user interface presented through the various rendered documents are discussed in greater detail below under the section heading "User Interface Features".

#### Exemplary Computing Environment

FIG. 7 illustrates an example of an independent computing device **700** that can be used to implement the architecture of FIG. 1. The computing device **700** may be implemented in many different ways, including a general-purpose computer (e.g., workstation, server, desktop computer, laptop computer, etc.), a handheld computing device (e.g., PDA, PIM, etc.), a portable communication device (e.g., cellular phone with computing capabilities), or other types of specialized appliances (e.g., set-top box, game console, etc.).

In the illustrated example, computing device **700** includes one or more processors or processing units **702**, a system memory **704**, and a bus **706** that is couples the various system components including the system memory **704** to processors **702**. The bus **706** represents one or more types of bus structures, including a memory bus or memory controller, a peripheral bus, an accelerated graphics port, and a processor or local bus using any of a variety of bus architectures. The system memory **704** includes read only memory (ROM) **708** and random access memory (RAM) **710**. A basic input/output system (BIOS) **712**, containing the basic routines that help to

transfer information between elements within the computing device **700** is stored in ROM **708**.

Computing device **700** further includes a hard drive **714** for reading from and writing to one or more hard disks (not shown). Some computing devices can include a magnetic disk drive **716** for reading from and writing to a removable magnetic disk **718**, and an optical disk drive **720** for reading from or writing to a removable optical disk **722** such as a CD ROM or other optical media. The hard drive **714**, magnetic disk drive **716**, and optical disk drive **720** are connected to the bus **706** by a hard disk drive interface **724**, a magnetic disk drive interface **726**, and an optical drive interface **728**, respectively. Alternatively, the hard drive **714**, magnetic disk drive **716**, and optical disk drive **720** can be connected to the bus **706** by a SCSI interface (not shown). It should be appreciated that other types of computer-readable media, such as magnetic cassettes, flash memory cards, digital video disks, random access memories (RAMs), read only memories (ROMs), and the like, may also or alternatively be used in the exemplary operating environment.

A number of program modules may be stored on ROM **708**, RAM **710**, the hard disk **714**, magnetic disk **718**, or optical disk **722**, including an operating system **730**, one or more application programs **732**, other program modules **734**, and program data **736**. As one example, the architecture **100** may be implemented as one or more programs **732** or program modules **734** that are stored in memory and executed by processing unit **702**. The drives and their associated computer-readable media provide nonvolatile storage of computer-readable instructions, data structures, program modules and other data for computing device **700**.

In some computing devices **700**, a user might enter commands and information through input devices such as a keyboard **738** and a pointing device **740**. Other input devices (not shown) may include a microphone, joystick, game pad, satellite dish, scanner, or the like. In some instances, however, a computing device might not have these types of input devices. These and other input devices are connected to the processing unit **702** through an interface **742** (e.g., USB port) that is coupled to the bus **706**. In some computing devices **700**, a display **744** (e.g., monitor, LCD) might also be connected to the bus **706** via an interface, such as a video adapter **746**. Some devices, however, do not have these types of display devices. Computing devices **700** might further include other peripheral output devices (not shown) such as speakers and printers.

Generally, the data processors of computing device **700** are programmed by means of instructions stored at different times in the various computer-readable storage media of the computer. Programs and operating systems are typically distributed, for example, on floppy disks or CD-ROMs. From there, they are installed or loaded into the secondary memory of a computing device **700**. At execution, they are loaded at least partially into the computing device's primary electronic memory. The computing devices described herein include these and other various types of computer-readable storage media when such media contain instructions or programs for implementing the steps described below in conjunction with a microprocessor or other data processor. The service system also includes the computing device itself when programmed according to the methods and techniques described below.

For purposes of illustration, programs and other executable program components such as the operating system are illustrated herein as discrete blocks, although it is recognized that such programs and components reside at various times in different storage components of the computing device **700**, and are executed by the data processor(s) of the computer.

It is noted that the computer 700 may be connected to a network via a wire-based or wireless connection to interact with one or more remote computers. In this network context, the computer 700 may be configured to store and execute portions of the architecture 100, while one or more remote computers store and execute other portions of the architecture. For example, the document renderer 102 may reside on one computer, while the remaining components reside on a separate computer. As a result, the architecture is distributed, with various components being stored on different computer-readable media.

#### General Operation

FIG. 8 shows a table/spreadsheet process 800 implemented by the architecture 100 of FIG. 1. The process 800 may be embodied in software stored and executed on a computer, such as computing device 700 in FIG. 7. Accordingly, the process 800 may be implemented as computer-executable instructions that, when executed on a processing system such as processor unit 702, perform the operations and tasks illustrated as blocks in FIG. 8.

At block 802, the architecture 100 creates a corresponding pair of free floating field and grid objects 107 and 130 for a new free floating field presented as part of the document. In one implementation, the FFFBehavior object 160, CellEditing object 162, and Spreadsheet object 164 are initially created for the new free floating field and then the Spreadsheet object 164 creates an associated grid object 130(2) in the spreadsheet engine 112. The grid object 130(2) includes a format table 132(2) and a cell table 134(2). If this is the first spreadsheet, a workbook 110 is also created. The grid 130 and workbook 110 then create other objects, including the formula manager 140 and a cell object 136.

At block 804, in response to the user entering data and/or formulas into the free floating field, the architecture receives the user entry and passes it to the spreadsheet engine 112 for processing. More specifically, in the continuing exemplary implementation, the Spreadsheet object 164 receives a notification from the document renderer 102 and passes it along to the grid 130(2) for the new free floating field.

At block 806, based on the user input, the architecture determines whether to parse the user-entered information or delay parsing until later. The architecture preferably employs a delay parser that parses fields and table cells when necessary, such as the first time that a formula has been loaded or the first time a value has been edited or referenced. If the field contains a formula, the cell is parsed immediately and added to the recalculation chain. If the field does not contain a formula, it is left unparsed until a formula requires its value.

At block 808, assuming that parsing is needed now (i.e., the “no” branch from block 806), the architecture parses the user-entered information and updates the format table 132 and cell table 134 based upon this information. At block 810, the architecture determines whether recalculation is appropriate. Some user input may not require recalculation, such as insertion of a new data value that is not referenced by a formula. If recalculation is not needed, flow continues at block 814 to determine whether the fields need to be updated as a result of the user input.

At block 812, assuming recalculation is appropriate (i.e., the “yes” branch from block 810), the architecture recalculates the various formulas that may have been affected by the user input. In the ongoing example, the act of putting a value into a cell 136 in the cell table 134 triggers a data-changed notification to registered listeners, which includes the grid objects 130(1) and 130(2). The grid objects identify any changed cells and forward the notification to the formula

manager 140, which marks any formulas depending on the changed cells as dirty and in need of recalculation.

The grid objects 130 then call the recalculation engine 142, which loops over the recalculation formula chain and recomputes the variously affected formulas (block 812(1)). While evaluating the formulas in the formula chain, unparsed cells that were previously left unparsed may now be parsed (block 812(2)).

Once the recalculation engine 142 finishes, it returns control to the workbook 110. The workbook 110 calls back to the recalculation engine 142 to learn which formulas changed as a result of the recalculation cycle. The workbook 110 then locates the grid objects 130 that hold the formulas and calls them to save the cells that contain the formulas.

At block 814, the architecture 100 determines whether any results have changed following the recalculation. If results have not changed (i.e., the “no” branch from block 814), process flow continues at block 804 for the next user input. Conversely, if the results have changed (i.e., the “yes” branch from block 814), the architecture 100 loads an updated free floating field with the modified value and renders the updated free floating field as part of the document (block 816).

It is noted that the above example assumed that the user entered data or a formula. The user may also change the format of the free floating field. The process 800 handles format changes in essentially the same way, but accounts for those changes in the format table 132(2) rather than the cell table 134(2).

#### User Interface Features

The architecture 100 supports many user interface (UI) features in the rendered document to convey integration of spreadsheet functionality into word processing tables and text. These UI features are described separately below, with reference to FIGS. 2-6. Hand-in-hand with these features are the underlying operations and inner workings of various components in the architecture 100. These aspects will be described in more detail later in this disclosure under the heading “Functionality Features”.

One of the primary benefits of integrating spreadsheet functionality into text and tables is that the user need no longer think in terms of whether the document should be primarily a spreadsheet document produced by a spreadsheet application (e.g., an “.xls” file from the “Excel” program) or primarily a word processing document produced by a word processing application (e.g., a “.doc” file from the “Word” program). Instead, the user creates an HTML document (or other markup-based document, such as an XML document) that can have both text and spreadsheet/table components. By integrating spreadsheet functionality into text, the user can build the document with automatically updateable fields without being restricted to the grid layout.

#### Integrated Headers

The table 124 toggles between a “table look” (FIG. 2) and a “spreadsheet look” (FIG. 3) depending upon whether the user is editing the table. The spreadsheet look may be invoked in a number of ways, including by actively editing a cell, by hovering a pointer over the table, or by some other activity. As illustrated in FIG. 3, the spreadsheet look includes column headers 302(1)-302(3) and row headers 304(1)-304(6) that integrate with the table columns and rows, respectively. Visually, the column headers 302 appear just above the columns and are labeled with letters A, B, C, etc., where as the row headers 304 reside to the left of the rows and are labeled with numbers 1, 2, 3, etc.

#### Smart Selection

When the user selects text inside or outside a table, the architecture intelligently discerns the type of content in the

cell or free floating field. For instance, the architecture determines whether the cell or free floating field contains a data value, text, or a formula. If the selected cell or free floating field contains text or a value, the UI exhibits the selection as a character-based cursor ready for cell editing. If the selected cell or free floating field contains a formula, the UI exhibits the selection by highlighting the entire result of the formula. A second selection gesture will allow the user to edit the formula within the formula edit box.

#### Key Processing

Certain keys have different interpretations depending upon the contents of the cell. This dynamic interpretation accommodates the competing interests of a word processing table and a spreadsheet. As an example, the "Enter" key typically means return in word processing, whereas it means move to the next cell and commit the formula in a spreadsheet program.

If the cell contains text (e.g., cells A1-A6, B1-B5, and C1 in FIG. 3), the architecture interprets this cell as primarily being a word processing-based cell and treats the keys as if the user were working within a word processing application. Thus, an "Enter" key means return, a "tab" key means tab over some distance, the "=" key is typed in anywhere but the beginning of the cell as the equals symbol without denoting a formula, and so forth. The same behavior is applied when the user is editing text within a paragraph or a free floating field.

If the cell or free floating field contains a formula or a data value (e.g., cells C2-C6 and FFF1 in FIG. 3), the architecture interprets this cell as primarily being a spreadsheet-based cell and treats the keys as if the user were working within a spreadsheet application. Thus, an "Enter" key and "tab" key mean navigation commands to move to the next cell or move outside the free floating field, the "=" key at the beginning of a cell implies the start of a formula, and so forth.

#### Table Expansion

Spreadsheet users are accustomed to the look and feel of an infinite grid. While the spreadsheet look of FIG. 3 does not have the same infinite grid feel, the table 124 has a column expansion control 306 and a row expansion control 308 that allow easy addition of columns and rows, respectively. The controls 306 and 308 include an actuatable addition icon together with a dashed column/row to suggest that additional columns and rows may be added by simply actuating the icon.

#### Resize Behavior

The table 124 preserves column width and wraps text as the user enters sentences and phrases. In FIG. 3, notice that item 2 in cell B5 wraps within the cell, rather than resizing the column width to accommodate the entire item.

#### Formula Edit Box

The architecture provides a formula edit box for inserting or editing a formula in a table cell or free floating field. The formula edit box overlays the original cell or free floating field in which the formula resides and initially defaults to the size and shape of the cell or underlying text. If the formula exceeds the initial size, the formula edit box is resized to accommodate the formula. During resizing, the formula edit box initially grows horizontally in length, and then vertically in depth. The underlying table or paragraph does not resize. The ability to resize the local formula edit box, rather than the cell and the table or the paragraph, eliminates a potential UI problem of watching the table or paragraph resize strangely as the user clicks into and out of the cell containing the formula.

Examples of the formula edit box are illustrated in FIGS. 3, 4, and 6. In FIG. 3, a formula edit box 312 hovers over cell C6 to accept the summation formula. Additionally, formula edit boxes appear over 126(1) and 126(2). In FIG. 4, a formula edit box 408 appears for formula 402. In FIG. 5, a formula edit

506 floats above cell C3 and is resized to accommodate the expanded formula. Notice that the underlying table cell C3 and the table as a whole is not resized. In FIG. 6, a formula edit box 610 resides above the free floating field 608 and is resized to hold the long formula.

#### Reference Edit

The table 124 and free floating field 126 allow the user to perform a reference edit operation, in which the user references one or more cells to extract their data values for inclusion in a formula in another cell or free floating field. In FIG. 3, the user begins entering a summation formula (i.e., "=SUM") in the formula edit box 312 above cell C6. The user then references cells C2 through C5 using a pointer 310 or some other mechanism. The referenced cells C2:C5 are highlighted or otherwise indicated as being selected, as represented by the bold rectangular box around the cells.

When the user finishes selecting the desired cells (e.g., releasing the left mouse button after highlighting cells C2:C5), references to the cells are added to the summation formula in formula edit box 312 (i.e., "=SUM(C2:C5)"). Upon further confirmation by the user (e.g., pressing the "Enter" key), an update event is generated and the architecture 100 recalculates the formula and updates the cell C6 to display the sum of the cells C2:C5, or \$12,060, in cell C6.

#### Reference Edit for Text

Free floating fields provide a unique mechanism for creating references to text via a reference edit operation. In FIG. 4, the user begins entering a formula (i.e., "=") into a formula edit box 408 overlaying a free floating field 402. The user then references the text 404 using a pointer 406 or some other mechanism. The referenced text string is highlighted or otherwise indicated as being selected and a second free floating field is automatically formed around the text range 404.

When the user finishes selecting the text range (e.g., releasing the left mouse button after highlighting text 404), a reference to the newly created free floating field is added to the formula in formula edit box 408 (i.e., "=FFF1"). Upon further confirmation by the user (e.g., pressing the "Enter" key), an update event is generated and the architecture 100 recalculates the formula and updates the free floating field 402 to display the text "Formal Bid". It is noted that the reference could be made to text within a table cell, to text outside the table or to text inside the table elsewhere in the cell or in another cell.

#### Cross-Table Referencing and Universal Recalculation

The architecture 100 supports cross-table and cross-field references where a cell in one table or field contains a formula referencing a cell in another table. The architecture 100 also supports cross-table and cross-field reference edit operations that permit a user to reference a cell in one table or a free floating field when entering a formula into another table.

FIG. 6 illustrates cross-table referencing, where table 606 contains references to tables 602 and 604. All three tables are separate and independent from one another, and architecturally have their own set of grid, spreadsheet and table objects 130, 106, and 104. In FIG. 6, cell B2 in table 606 contains a summation formula for adding values in cells B2 and B3 of table 602 (i.e., =SUM(Table1!B2:Table1!B3)). Cell B3 in table 606 contains a summation formula for adding values in cells B2 through B4 in table 604 (i.e., =SUM(Table2 !B2: Table2 !B4)).

The ability to cross-reference other tables or free floating fields is beneficial in that all tables and free floating fields can be universally updated for any change in just one of the tables. For example, suppose the user changes the value in cell B2 of table 602 from \$300 to \$400. As a result of this change, table 602 is updated to reflect the new value \$400 and the total



amount in cell B6 is updated from \$3,060 to \$3,160. Additionally, the value in cell B2 of table 606 is updated to \$2,400, causing the total amount in cell B4 in table 606 to be changed from \$7,800 to \$7,900.

The cross-table referencing is a significant improvement over conventional OLE techniques of embedding a spreadsheet object within a word processing document. With OLE, each spreadsheet object is independent from each other and cannot reference cells in one another automatically. Since there is no cross-referencing ability, the OLE approach cannot support universal updating throughout the document's spreadsheets as a result of changing a value in one spreadsheet.

#### Free Floating Field Reference Edit

The reference edit operation and cross-referencing is also available when entering a formula for a free floating field. Consider the document 600 in FIG. 6. The writer is attempting to summarize the total cost of all work items in the opening paragraph. Rather than typing in a hard value, the user decides to insert a free floating field 608 that will hold the total for the job. By using a free floating field 608, the amount can be automatically updated as other estimates in the underlying tables are modified.

Using a reference edit operation, the user can enter the formula in the edit box 610 for free floating field 608 by selecting cell B6 in table 602 to capture element "Table1!B6" and then selecting cell B8 in table 604 to capture element "Table2!B8". When the user confirms this formula, the formula edit box 610 disappears and the total value of "\$12,060" is inserted into the free floating field 608.

In the event the user subsequently changes the estimate of any item in tables 602 or 604, the total value in free floating field 608 is automatically updated. Extending a previous example, suppose the user changes the value in cell B2 of table 602 from \$300 to \$400. As a result of this change, table 602 is updated to reflect the new value \$400 and the total amount in cell B6 is updated from \$3,060 to \$3,160. The value in cell B2 of table 606 is updated to \$2,400, causing the total amount in cell B4 in table 606 to be changed from \$7,800 to \$7,900. Additionally, the total amount in free floating field 608 is updated from \$12,060 to \$12,160. All of the updating throughout the tables and free floating fields is performed automatically in response to the user's change of a single cell in a single table.

It is further noted that a free floating field may reference another free floating field. For instance, another free floating field may be added in document 600 to reference the first free floating field 608, or a combination of the free floating field 608 and a table cell in tables 602, 604, and 606.

#### Nesting

The architecture 100 supports tables and free floating fields nested within one another. FIG. 5 illustrates a situation in which an inner table 504 is nested within a cell B3 of outer table 502. The two tables are independently managed and each has its own underlying pair of grid object 130 and spreadsheet objects 106. In this example, cell C3 in outer table 502 is referencing an array of cells B1:B3 in inner table 504, as represented by the summation formula in formula edit box 506. Notice that the reference syntax "Table2!B1" in the formula edit box refers to a separate table and not to cell B3. This is essentially the same cross-table reference edit operation described above, even though the reference is to a table nested within another table cell.

Similarly, a free floating field may be nested within a table cell, or, vice versa, a table may be nested within a free floating field. In addition, one or more free floating fields may be nested within one or more other free floating fields. Essen-

tially, the architecture and UI supports any nesting arrangement involving tables and free floating fields.

The nesting architecture is another feature that is an improvement over conventional table and spreadsheet approaches. OLE mechanisms of embedding a spreadsheet object within a word processing document do not support nested tables.

#### Common Document Behaviors

The architecture allows common document behaviors for the text body and across the tables. Such functions as spell checking, grammar checking, find, and replace are continuous across table and free floating field boundaries, treating the cell and free floating field contents as if they were part of the document. Moreover, text formatting carries across boundaries. Essentially, any features that are added to modify the text can similarly be applied across a table boundary or free floating field to text inside a table or free floating field. The conventional OLE mechanisms of embedding a spreadsheet object within a word processing document were incapable of supporting these common document behaviors that traversed table boundaries.

The benefits of this feature are especially apparent for free floating fields. If a user selects an entire paragraph containing several free floating fields, the user can format the paragraph. The formatting will apply to the normal text as well as to all of the free floating fields within the paragraph.

#### Functionality Features

This section describes how the architecture functionally supports the user interface features described above, including recalculation, reference edit mechanics, cross-table referencing, the formula edit box, and structure changes to the table. These functionality features are described separately below.

#### Data v. Presentation

The architecture 100 separates data functions from presentation functions of the integrated table/spreadsheet by employing dual objects per table or free floating field. As shown in FIG. 3, there is one pair of spreadsheet and grid objects for each table or floating field. The grid object 130 maintains the data and format information, and facilitates the recalculation process. The corresponding spreadsheet objects 106 and free floating field objects 107 are more concerned with presenting the table and free floating field as part of the document, as well as capturing user inputs into the table and free floating field.

The separation is beneficial because it allows the architecture to support cross-table referencing, reference editing to other tables, and universal recalculation throughout the document. The underlying grid objects do not care how the tables or free floating fields are laid out or where they appear in the document, nor do they care if there are one or multiple grid objects. Similarly, the spreadsheet objects 106 and free floating field objects 107 do not worry about the data and formulas, or the recalculation process.

#### Recalculation

Recalculation is a function performed by the architecture 100 in response to modification of a table or free floating field. When a modification is made, the architecture 100 recalculates the various formulas in all tables and free floating fields in the document that may have been affected by user input.

Continuing the example of FIG. 6, when the user changes the value in cell B2 of first table 602 from \$300 to \$400, the recalculation engine 142 in spreadsheet engine 112 recalculates the formulas in cell B6 of first table 602 to update the amount from \$3,060 to \$3,160. The recalculation engine 142 also re-computes the formula in cell B2 of third table 606 to yield \$2,400 and the formula in cell B4 in third table 606 to



yield \$7,900. Finally, the recalculation engine **142** recalculates the formula in free floating field **608** to update the value from \$12,060 to \$12,160. This recalculation occurs automatically across the entire document in response to the user input.

FIG. **9** illustrates the recalculation process **900** for a single table in more detail. An input version of the user interface table **902(1)** is shown at a time when the user enters a new value “7” in cell A1, but has not yet confirmed the entry (e.g., by hitting the “Enter” key or clicking out of the cell). An output version of the UI table **902(2)** is shown at a time just after user confirmation.

A corresponding pair of spreadsheet and grid objects **106** and **130** exists for the table **902**. The grid object **130** maintains a cell table **134** and a format table **132**. Prior to user entry of “7” into cell A1, cell table **134** contains a value “1” in cell A3, a formula referencing cell A1 (i.e., “=A1”) in cell C1, and a formula summing cells A1 and C1 (i.e., “=A1+C1”) in cell C3. The format table **132** indicates that cell A3 is formatted as a number, and that cells C1 and C3 are formatted as currency in U.S. dollars. The input version of UI table **902(1)** shows results of the formatted formulas as \$0.00 in cell C1 and \$1.00 in cell C3.

Now, suppose the user enters the value “7” into cell A1 of UI table **902(1)**, as indicated by the pointer **904**. The value is received at the spreadsheet objects **106**, as indicated by flow arrow **910**. Once the user confirms this entry by moving the selection out of the cell A1, the newly entered value “7” is passed to the spreadsheet engine **112** and particularly, the parser **144** of formula manager **140** (flow arrow **912**).

The parser **144** parses the entry and determines it to be a data value. The parser **144** puts the data value into cell A1 of the cell table **134** (flow arrow **914**). This insertion causes a table change event, which is sent to the recalculation engine **142** to initiate a recalculation (flow arrow **916**). The recalculation engine **142** runs through the formula chain to recalculate any formula anywhere that is affected by the new data value in cell A1. In this case, the formulas in cells C1 and C3 are affected and hence, these formulas are recalculated (flow arrow **918**). The recalculation produces a result of “7” in cell C1 and a result of “8” in cell C3.

Afterwards, the format table **132** is consulted to determine the desired format for the new value and recalculated formulas (flow arrow **920**). Here, the formula results are formatted as currency as indicated by the “\$” symbols in cells C1 and C3, and the new value “7” is formatted as a number as indicated by the “#” symbol in cell A1.

The spreadsheet engine returns the formatted results \$7.00, \$8.00, and 7 to the spreadsheet objects **106** (flow arrow **922**). The spreadsheet objects **106** updates the table with these formatted results to produce the output version of the UI table **902(2)** (flow arrow **924**).

The recalculation event is essentially instantaneous. The user merely sees an immediate change in the UI table from input version **902(1)** to output version **902(2)**.

The above example of recalculation was described in the context of tables. However, it is noted that essentially the same recalculation operations may be performed in free floating fields, as is described below in more detail.

#### Reference Edit Mechanics

The reference edit mechanism allows the user to reference another cell to obtain data, rather than forcing the user to type in a value or the reference syntax. In FIG. **9**, consider the situation when the user created the formula “=A1” in cell C1. The user selects cell C1, types in an “=” sign to indicate a formula, and then references the cell A1 by moving the mouse pointer **904** to cell A1 and clicking. The spreadsheet objects **106** (namely, CellEditing object **152**) capture this reference

and pass it to parser **144**. The parser **144** recognizes it as a formula, creates a formula object and inserts the formula into a cell of cell table **134**, as indicated by cell C1. Again, a similar mechanism may be used for free floating fields.

#### Cross-Table and Field Referencing and Universal Recalculation

With architecture **100**, reference editing may be extended across multiple tables and free floating fields distributed throughout a document. A cell in one table or a free floating field may reference a cell in another table, a different free floating field, or a combination of a table cell and free floating field. The architecture **100** automatically recalculates all tables and free floating fields that are affected by a change in any one table cell or free floating field.

FIG. **10** illustrates the recalculation process **1000** for a document **1002** containing multiple tables **1004(1), . . . , 1004(N)** and multiple free floating fields **1006(1), . . . , 1006(M)** distributed throughout the text body. A corresponding set of spreadsheet, free floating field, grid objects **106, 107** and **130** is created for each table **1004(1)-1004(N)** and each free floating field **1006(1)-1006(M)** in the document **1002**.

In this illustration, spreadsheet object **106(1)** and associated grid object **130(1)** support UI table **1004(1)**, spreadsheet object **106(N)** and associated grid object **130(N)** support UI table **1004(N)**, free floating field object **107(1)** and associated grid object **130(N+1)** support free floating field **1006(1)**, and free floating field object **107(M)** and associated grid object **130(N+M)** support free floating field **1006(M)**. The table grid objects **130(1)-130(N)** each contain a cell table **134(1)-134(N)** and a format table **132(1)-132(N)**. The FFF grid objects **130(N+1)-130(N+M)** each contain a single cell **136(1)-136(M)** and a corresponding format cell **138(1)-138(M)**.

Suppose the user is entering a summation formula in cell B1 of UI table **1004(N)** that adds three cells C1-C3 in table **1004(1)**. Rather than typing in the reference syntax (i.e., “=SUM(Table1 !C1:Table1 !C3)”), the user may simply move the pointer **1010** to table **1004(1)** and select the desired array of cells, as indicated by the selection block **1012**. The spreadsheet object **106(N)** (namely, the CellEditing object) associated with the source table **1004(N)** recognizes the reference edit operation and captures the selected cells C1-C3 in remote referenced table 1 (flow arrow **1020**). When the user confirms this entry by moving the selection out of the referenced table **1004(1)**, the newly entered formula “=SUM (Table1!C1:Table1!C3)” is passed to the spreadsheet engine **112** and particularly, the parser **144** of formula manager **140** (flow arrow **1022**).

The parser **144** determines that the entry is a formula and creates a formula object (not shown) and adds the formula to the formula chain. The parser **144** puts the formula into cell B1 of the cell table **134(N)** in cell table N (flow arrow **1024**). This insertion generates a table change event, which is sent to the recalculation engine **142** to initiate a recalculation (flow arrow **1026**).

The recalculation engine **142** runs through the entire formula chain to recalculate any formula in any table or free floating field that is affected by adding the new formula in cell B1. In this case, the formulas in free floating cells **136(1)** and **136(M)** are affected. But, since these formulas rely on the result of the newly entered formula in table N, they are moved to the end of the formula chain. Thus, the new formula is first calculated (flow arrow **1028**), and then the formulas in free floating field cells **136(1)** and **136(M)** are recalculated (flow arrows **1030** and **1032**). The recalculation produces a result of “425” for table cell B1 in cell table N, a result of “425” in FFF cell **136(1)**, and a result of “425” in FFF cell **136(M)**.

Afterwards, the various format tables **132(N)** and format cells **138(1)** and **138(M)** are consulted to determine the desired format for the results of the recalculated formulas. Here, all formula results are formatted as currency as indicated by the "\$". The spreadsheet engine **112** returns the formatted results "\$425.00" to the associated spreadsheet objects **106(N)**, **107(1)**, and **107(M)** (flow arrows **1034**, **1036**, **1038**). The spreadsheet objects then update their associated table and free floating fields with these formatted results to produce the output as shown in FIG. **10** (flow arrows **1040**, **1042**, **1044**).

Once again, the recalculation event is essentially instantaneous and the user merely perceives an immediate change in the affected UI table and free floating fields throughout the document **1002**.

#### Formula Edit Box

The CellEditing objects **152** and **162** manage the formula edit box that permits user edits of formulas in table cells and free floating fields. The formula edit box is provided in the user interface in response to the user entering the "=" symbol at the beginning of a cell. The formula edit box is overlaid as a separate entry field above the cell or free floating field into which the user is inserting a formula. The CellEditing object **152** or **162** captures the user entry of various variants in the formula, and facilitates reference editing to other cells or free floating fields as a way to input values. When the formula is entered via the formula edit box and confirmed, the CellEditing object **152** or **162** passes the formula to the formula manager **140** in the spreadsheet engine **112** for parsing. The formula edit box is then removed from the user interface.

#### Structural Changes

The Table object **104** manages and monitors the user input for structure changes, such as insertion/deletion of a row, merging cells, and so forth. When the user makes a structure change, the Table object **104** fires events to the GridBehavior object **150**, which informs the spreadsheet engine **112**, and in turn updates the cell table **134** associated with the UI table.

As above, any change to the cell table causes an event that is returned to the recalculation engine **142** to initiate a recalculation cycle. The recalculation engine steps through the chain of formulas and updates all cells affected by the structural change, returning any errors that might arise from the structure change (e.g., loss of a reference value as a result of deleting a row/column). The spreadsheet engine then outputs the results of the recalculation and the UI table is updated to reflect the structural change and the recalculation results.

#### Cut, Copy, Paste

A separate document object may be employed to manage operations affecting the entire document, rather than a specific table or free floating field. The document object plays a role in initially inserting the table/spreadsheet or free floating field into the document. The document object may be constructed similarly to the GridBehavior object **150** and configured to monitor for cut, copy, and paste operations. When a cut or copy operation is performed, the object places the HTML code on the clipboard. Upon a subsequent paste operation, the HTML code is retrieved from the clipboard and inserted into the appropriate location. It is noted that, unlike some spreadsheet programs, the user is not forced to cut/copy and then immediately paste.

One unique problem that is not encountered by traditional spreadsheet programs is the ability to create a new table or free floating field through a paste operation. When a new table or free floating field is created, the architecture automatically renames the new table or free floating field and adjusts all references within the table or free floating field that was pasted.

## CONCLUSION

Although the description above uses language that is specific to structural features and/or methodological acts, it is to be understood that the invention defined in the appended claims is not limited to the specific features or acts described. Rather, the specific features and acts are disclosed as exemplary forms of implementing the invention.

The invention claimed is:

**1.** A method, at least partially implemented on a computer, comprising:

presenting at least one table within a document, the table having multiple cells;

presenting a free floating field inline with text in the document, wherein the free floating field is integrated into the text, and wherein selecting and applying formatting to the text applies the formatting to the free floating field; overlaying a formula edit box on the free floating field to facilitate entry of a formula into the free floating field, wherein the formula references a cell in the table;

automatically recalculating the formula in the free floating field upon modification of the cell in the table; and creating a second free floating field in response to a selection of at least a portion of the text in the document, wherein the second free floating field is configured to contain the selected portion of text.

**2.** The method of claim **1**, wherein the formula edit box initially defaults to a size and shape of the free floating field.

**3.** The method of claim **1**, further comprising resizing the formula edit box to enable entry of the formula.

**4.** The method of claim **1**, further comprising extending the formula edit box horizontally and subsequently enlarging the formula edit box vertically to enable entry of the formula.

**5.** A computer readable medium having computer-executable instructions that, when executed on one or more processors, perform the method as recited in claim **1**.

**6.** A user interface, produced by, and defined on, a computing device, comprising:

a text entry area that permits entry of text;

a free floating field residing inline with the text, the free floating field presenting content derived from source data or referencing source data such that upon modification of the source data, the free floating field automatically re-derives the content and presents the re-derived content, wherein the re-derived content is integrated into the text, and wherein selecting and applying formatting to the text applies the formatting to the re-derived content in the free floating field; and

a second free floating field residing inline within the text, the second free floating field created in response to a selection of at least a portion of the text, and the a second free floating field configured to contain the selected portion of text.

**7.** The user interface of claim **6**, wherein the content of the free floating field is presented as text when not being edited.

**8.** The user interface of claim **6**, wherein the free floating field exhibits a change in appearance when selected for editing.

**9.** The user interface of claim **6**, wherein the free floating field contains a formula and the source is a data value.

**10.** The user interface of claim **6**, wherein a formula edit box is overlaid on the free floating field to facilitate entry of a formula into the free floating field.

**11.** The user interface of claim **10**, wherein the formula edit box dynamically resizes to enable entry of the formula.

## 23

12. The user interface of claim 10, wherein the formula edit box extends horizontally and subsequently enlarges vertically to enable entry of the formula.

13. The user interface of claim 6, wherein the free floating field is a first free floating field and further comprising a second free floating field inline within text, the second free floating field presenting content derived from referencing the first free floating field.

14. The user interface of claim 6, further comprising a table with multiple cells, the table having a particular cell that presents content derived from referencing the free floating field.

15. A user interface, produced by, and defined on, a computing device, comprising:

at least one table residing within a document, the table having multiple cells;

at least one free floating field inline with text in the document, the free floating field containing a formula that references a cell in the table, wherein the free floating field is integrated into the text, and wherein selecting and applying formatting to the text applies the formatting to the free floating field; and

the formula in the free floating field being automatically recalculated upon modification of the cell in the table; and

## 24

a second free floating field residing inline with the text in the document, the second free floating field created in response to a selection of at least a portion of the text in the document, and the second free floating field configured to contain the selected portion of text.

16. The user interface of claim 15, wherein the free floating field is a first free floating field and further comprising a second free floating field containing a reference to the first free floating field.

17. The user interface of claim 15, wherein the free floating field is nested within a cell of the table.

18. The user interface of claim 15, wherein the table is nested within the free floating field.

19. The user interface of claim 15, further comprising a formula edit box overlaid on the free floating field to facilitate entry of the formula.

20. The user interface of claim 15, further comprising multiple tables and multiple free floating fields, at least one of the tables and free floating fields containing a formula that references at least one other of the tables and free floating fields.

\* \* \* \* \*