



US006226678B1

(12) **United States Patent**  
**Mattaway et al.**

(10) **Patent No.:** **US 6,226,678 B1**  
(45) **Date of Patent:** **\*May 1, 2001**

(54) **METHOD AND APPARATUS FOR DYNAMICALLY DEFINING DATA COMMUNICATION UTILITIES**

5,166,931	11/1992	Riddle .....	370/401
5,204,669	4/1993	Dorfe et al. ....	340/825.52
5,224,095	6/1993	Woest et al. ....	370/401
5,241,594 *	8/1993	Kung .....	380/4

(75) Inventors: **Shane D. Mattaway**, Boca Raton;  
**Glenn W. Hutton**, Miami; **Craig B. Strickland**, Tamarac; **Jan L. Christensen**, Plantation, all of FL (US)

(List continued on next page.)

**FOREIGN PATENT DOCUMENTS**

(73) Assignee: **NetSpeak Corporation**, Boca Raton, FL (US)

0455402	11/1991	(EP) .
0556012	8/1993	(EP) .
9219054	10/1992	(WO) .

**OTHER PUBLICATIONS**

(\*) Notice: This patent issued on a continued prosecution application filed under 37 CFR 1.53(d), and is subject to the twenty year patent term provisions of 35 U.S.C. 154(a)(2).

Comer, Douglas E., "Internetworking with TCP/IP". vol. 1, 2nd ed. Principles, Protocols and Architecture.

(List continued on next page.)

Subject to any disclaimer, the term of this patent is extended or adjusted under 35 U.S.C. 154(b) by 0 days.

*Primary Examiner*—Robert B. Harrell  
*Assistant Examiner*—Thong Vu  
(74) *Attorney, Agent, or Firm*—Kudirka & Jobse, LLP

(57) **ABSTRACT**

(21) Appl. No.: **08/719,640**  
(22) Filed: **Sep. 25, 1996**

**Related U.S. Application Data**

- (63) Continuation-in-part of application No. 08/523,115, filed on Sep. 25, 1995.
- (51) **Int. Cl.<sup>7</sup>** ..... **G06F 13/38**
- (52) **U.S. Cl.** ..... **709/230; 709/227**
- (58) **Field of Search** ..... 395/188.01, 200.33, 395/200.55, 200.56, 200.59, 772; 709/232, 230, 170, 200, 203, 220, 227; 380/49, 4; 370/352, 356; 340/825.52; 717/5

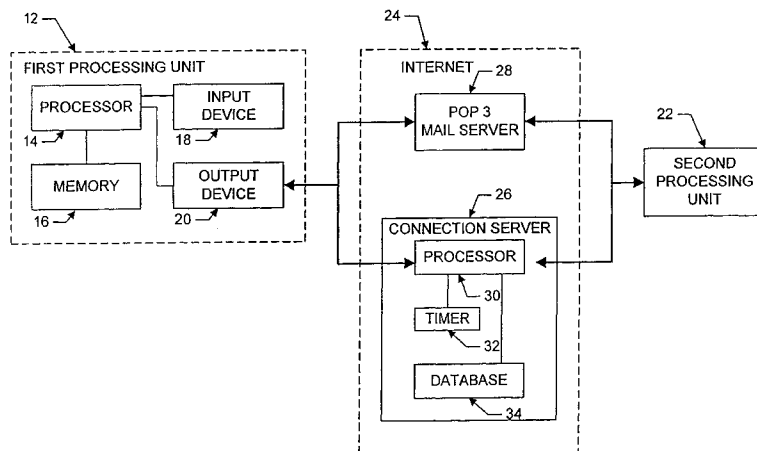
A communication protocol for establishing real-time, point-to-point communications between client processes over a computer network includes a directory server apparatus for providing current dynamically assigned Internet Protocol addresses of client process currently connected to the computer network. The client processes can be Internet telephony applications each capable of performing a plurality of predefined functions. In accordance with one aspect of the invention, each client process is required to connect to the server apparatus upon initialization and receives a feature definition identifying which of the plurality of functions the client process is authorized to perform. In another aspect of the invention a callee client process verifies the identity of a caller client process with the directory server and is provided with the feature definition of the caller process to prevent the caller client process from communicating with the callee client process in unauthorized manners. In accordance with yet another aspect of the invention, the feature definition is definable by either the requesting client process or the server.

(56) **References Cited**

**U.S. PATENT DOCUMENTS**

4,446,519 *	5/1984	Thomas .....	364/300
4,658,093 *	4/1987	Hellman .....	380/25
4,800,488 *	1/1989	Agrawal et al. ....	364/200
5,095,480	3/1992	Fenner .....	340/825.04
5,150,360	9/1992	Perlman et al. ....	370/402

**25 Claims, 19 Drawing Sheets**



## U.S. PATENT DOCUMENTS

5,291,554	3/1994	Morales .....	385/5	5,721,827	*	2/1998	Logan et al. ....	395/200.47
5,309,433	5/1994	Cidon et al. ....	370/60	5,724,092	*	3/1998	Davidsohn et al. ....	348/14
5,309,437	5/1994	Perlman et al. ....	370/401	5,724,412	*	3/1998	Srinivasan .....	379/93.23
5,319,705	* 6/1994	Halter et al. ....	380/4	5,724,506	*	3/1998	Cleron et al. ....	709/200
5,321,813	6/1994	McMillen et al. ....	370/228	5,729,748	*	3/1998	Robbins et al. ....	717/5
5,335,276	* 8/1994	Thompson et al. ....	380/21	5,734,828	*	3/1998	Pendse et al. ....	709/203
5,347,632	* 9/1994	Fillep et al. ....	709/200	5,740,231		4/1998	Chon et al. .	
5,357,571	10/1994	Banwart .....	380/21	5,784,619	*	7/1998	Evans et al. ....	709/170
5,400,335	3/1995	Yamada .....	370/524	5,805,822	*	9/1998	Long et al. ....	709/232
5,425,028	6/1995	Britton et al. .		5,815,665	*	9/1998	Teper et al. ....	395/200.59
5,430,709	7/1995	Galloway .....	370/401	5,872,850	*	2/1999	Klein et al. ....	380/49
5,430,727	7/1995	Callon .....	370/401	5,925,103	*	7/1999	Magallanes et al. ....	709/230
5,432,846	7/1995	Norio .....	379/266	6,009,469	*	12/1999	Mattaway et al. ....	709/227
5,434,797	7/1995	Barris .						
5,442,633	8/1995	Perkins et al. ....	370/331					
5,452,296	9/1995	Shimizu .....	370/399					
5,455,854	10/1995	Dilts et al. ....	379/201					
5,457,683	10/1995	Robins .....	370/258					
5,457,738	10/1995	Sylvan .....	379/93.24					
5,463,625	10/1995	Yasrebi .....	370/401					
5,465,286	11/1995	Clare et al. ....	379/34					
5,469,500	11/1995	Satter et al. ....	379/201					
5,475,741	12/1995	Davis et al. ....	379/102.06					
5,479,411	12/1995	Klein .....	379/88.13					
5,481,720	* 1/1996	Loucks et al. ....	395/700					
5,499,295	* 3/1996	Cooper .....	380/23					
5,509,058	4/1996	Sestak et al. ....	379/201					
5,517,494	5/1996	Green .....	370/408					
5,524,110	6/1996	Danneels et al. ....	395/200.34					
5,524,141	6/1996	Braun et al. ....	379/93.25					
5,524,254	6/1996	Morgan et al. .						
5,526,489	6/1996	Nilakantan et al. ....	395/200.58					
5,533,110	7/1996	Pinard et al. ....	379/201					
5,544,303	8/1996	Maroteaux et al. ....	345/326					
5,544,322	* 8/1996	Cheng et al. ....	395/200.12					
5,546,582	8/1996	Brockmeyer et al. ....	392/680					
5,581,552	12/1996	Civanlar et al. .						
5,586,260	* 12/1996	Hu .....	395/200.2					
5,608,786	3/1997	Gordon .						
5,659,596	* 8/1997	Dunn .....	455/456					
5,671,428	* 9/1997	Muranaga et al. ....	395/772					
5,701,463	* 12/1997	Malcolm .....	395/610					

## OTHER PUBLICATIONS

[www.cox.smu.edu/class/mis6386/people/stort/iphone25.exe](http://www.cox.smu.edu/class/mis6386/people/stort/iphone25.exe), VocalTec Internet Phone Version 2.5, Feb., 1995.

Weinburg, Netscape Conference and Cooltalk Meeting Room, 222.15.com, Feb. 22, 1996.

Gull, Getting IP Address of PPP-Connected Mac. <jgull-0304951005350001@pm012-11.dialip.mich.net>, Apr., 3, 1995.

Gull, "Internet Phone for Mac?", jgull-170495011645001@pm049-28.dialip.mich.net>, Apr. 17, 1995.

December & Randall, "The World Wide Web Unleashed", Samw Publishing, Indianapolis, IN, 1994, pp. 3-24. 12/94.

Heylighen, "WorldWideWeb: a distributed hypermedia paradigm for global networking", IEE/INSPEC Database Updates and Additions (1960-19950 Doc.# 1374618: Proceedings SHARE Spring Conference, Apr. 1994.

*Internetworking with TCP/IP*, Vol. I, Second Edition, *Principles, Protocols, and Architecture*, by Douglas E. Comer, cover page and pages vii-xviii, 1-3, 17-19 and 311-333.

Cheshire et al, Internet Mobility 4x4, [www.acm.org](http://www.acm.org), 1996.\* Mueller et al. ATD Data Services. [www.coare.ucar.edu/iita/ws/dataworkshop/abstract-ATD.html](http://www.coare.ucar.edu/iita/ws/dataworkshop/abstract-ATD.html), Jan. 1995.\*

EMAIL 101. <http://metalabunc.edu/pub/docs/books/gutenberg/etext93/email025.txt>, Jul. 1993.\*

\* cited by examiner

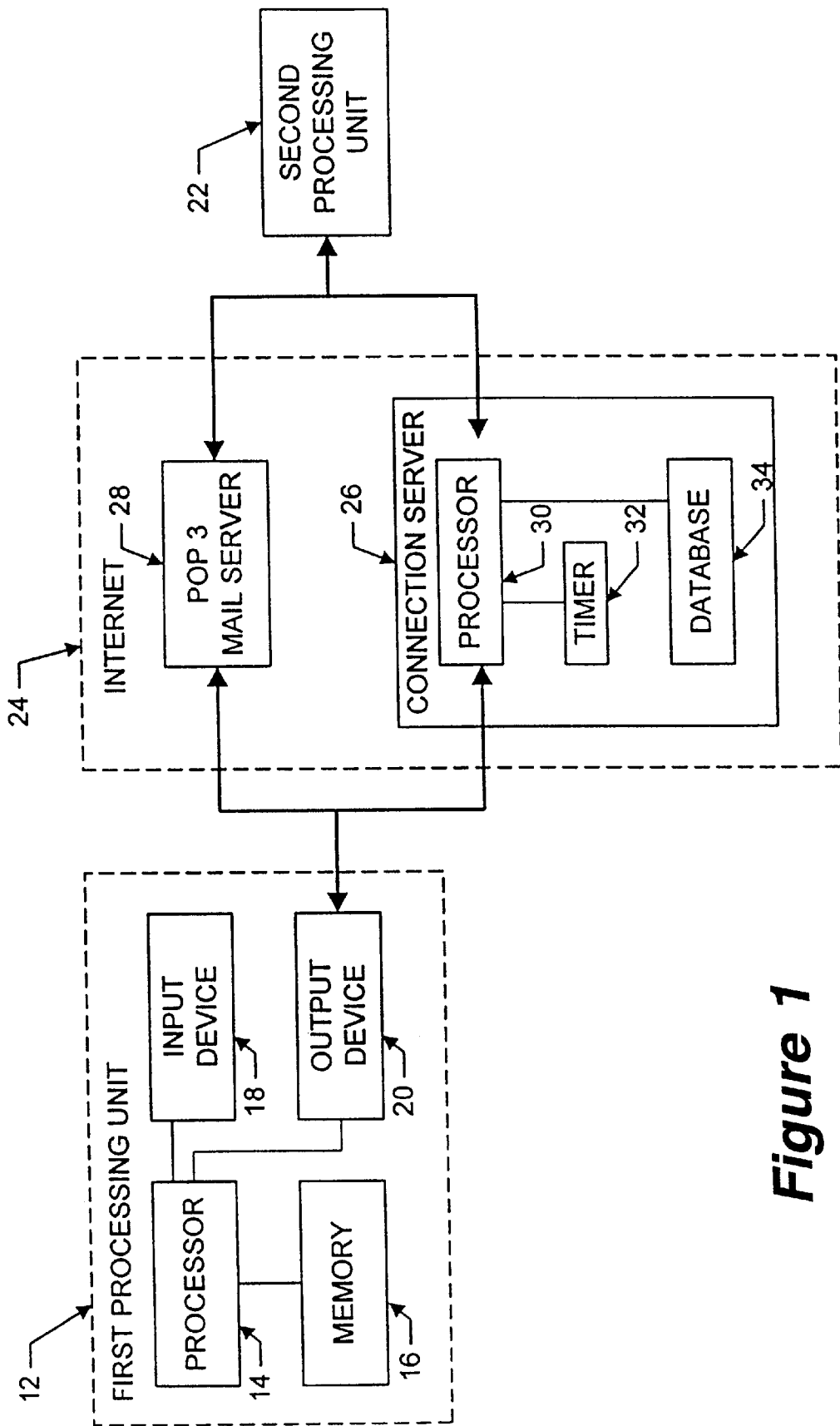


Figure 1

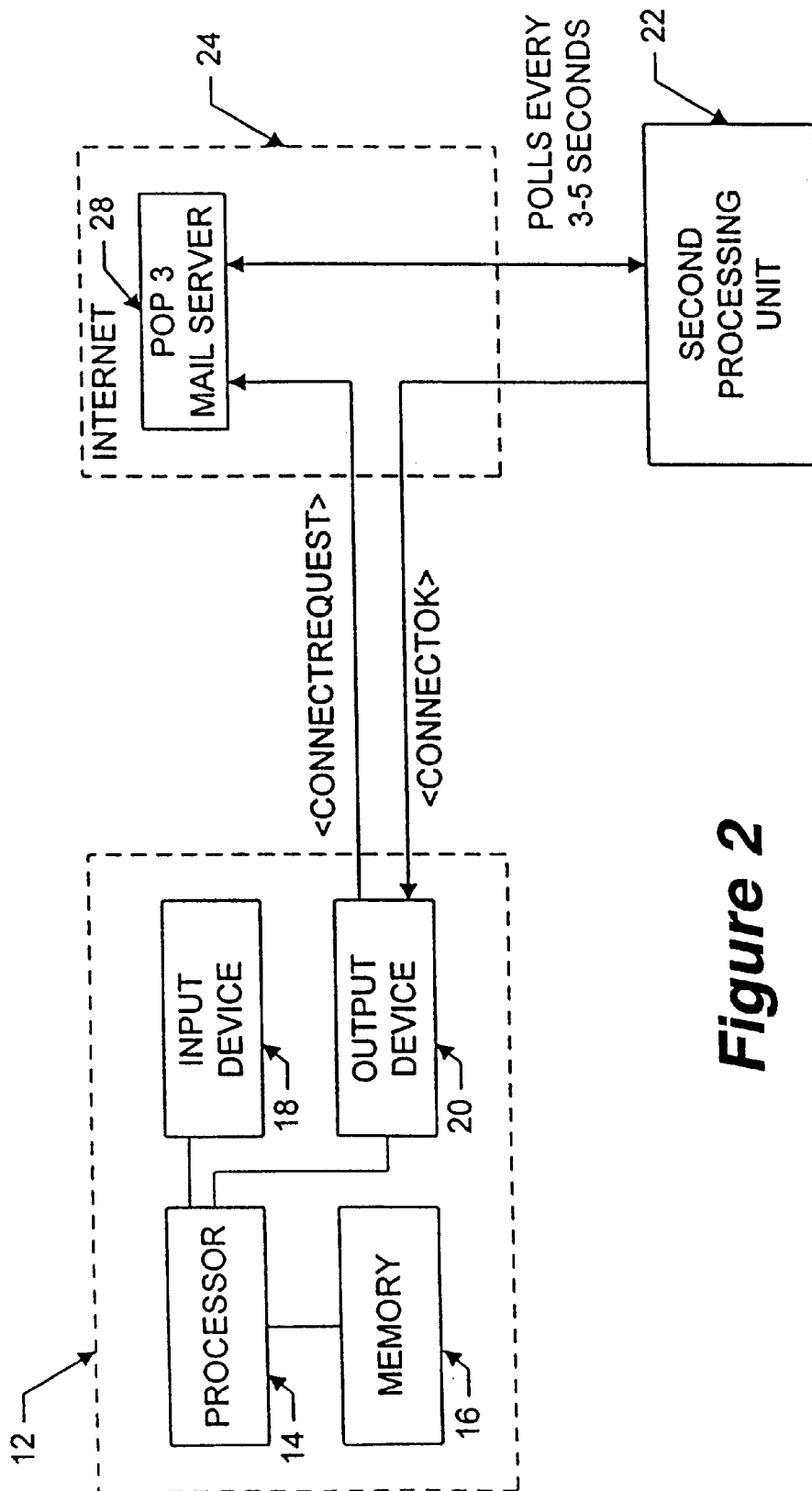
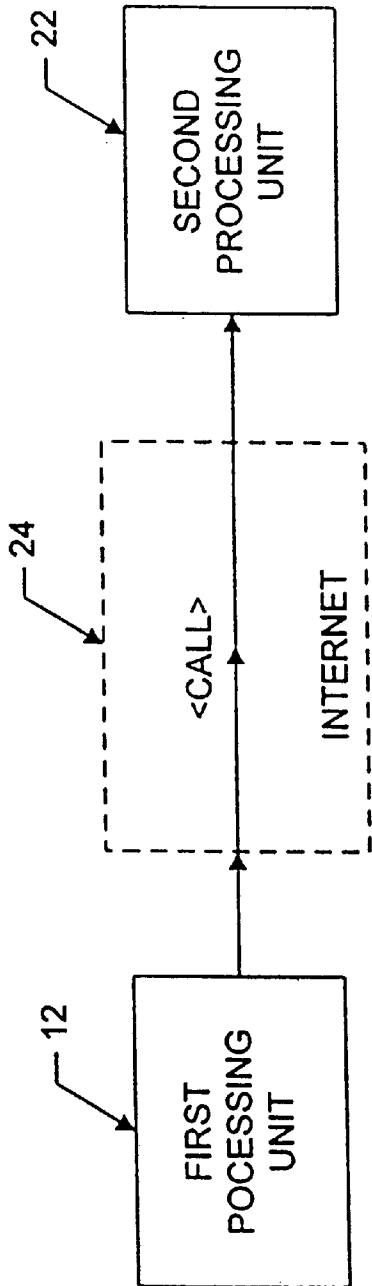
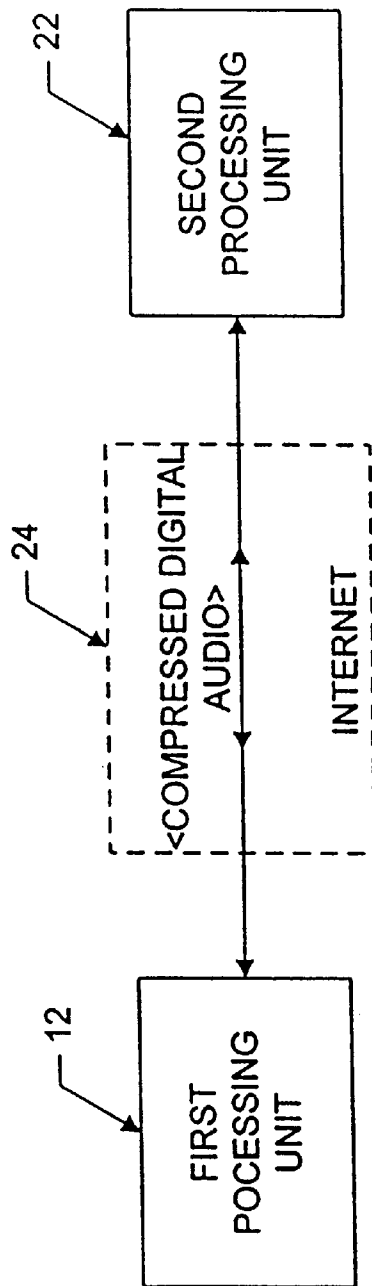


Figure 2



**Figure 3**



**Figure 4**

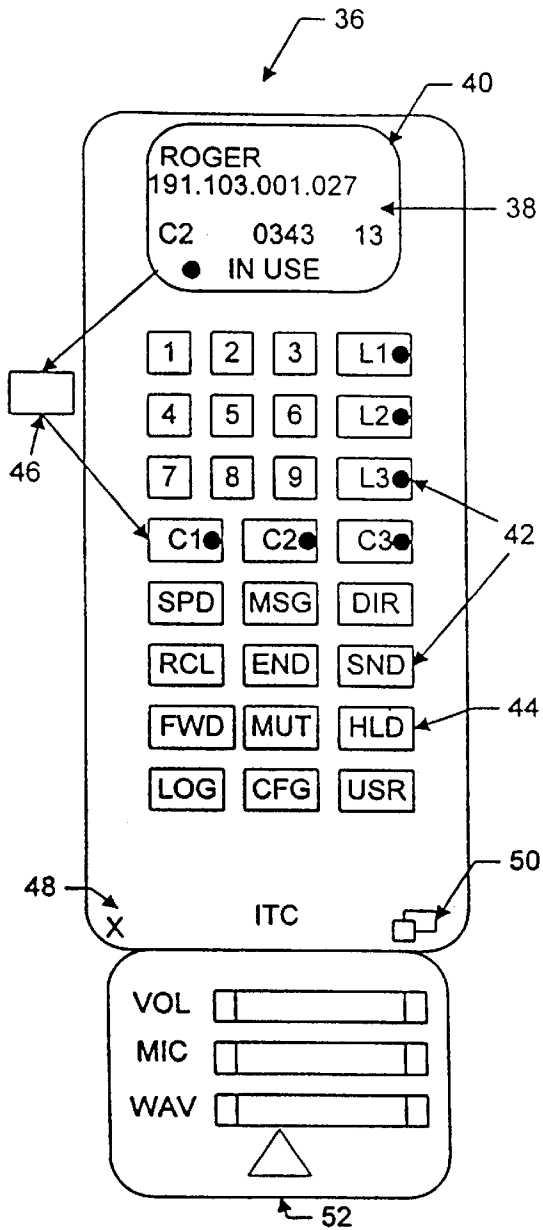


Figure 5

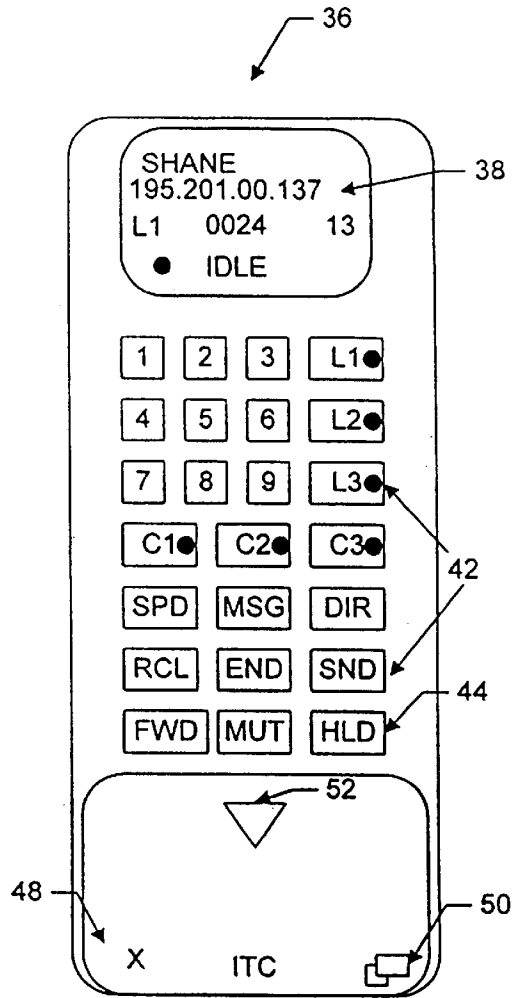
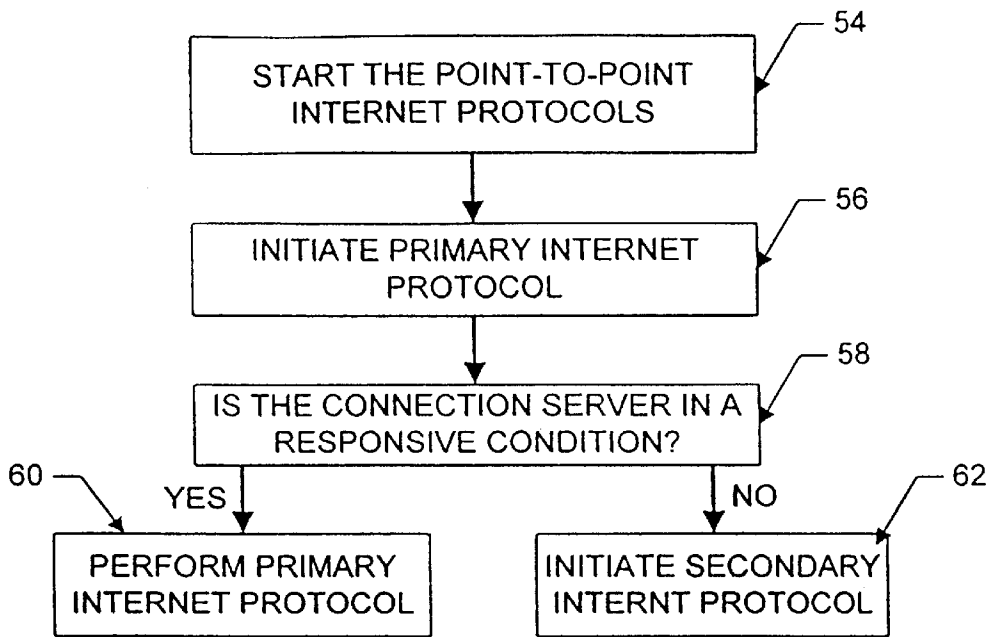
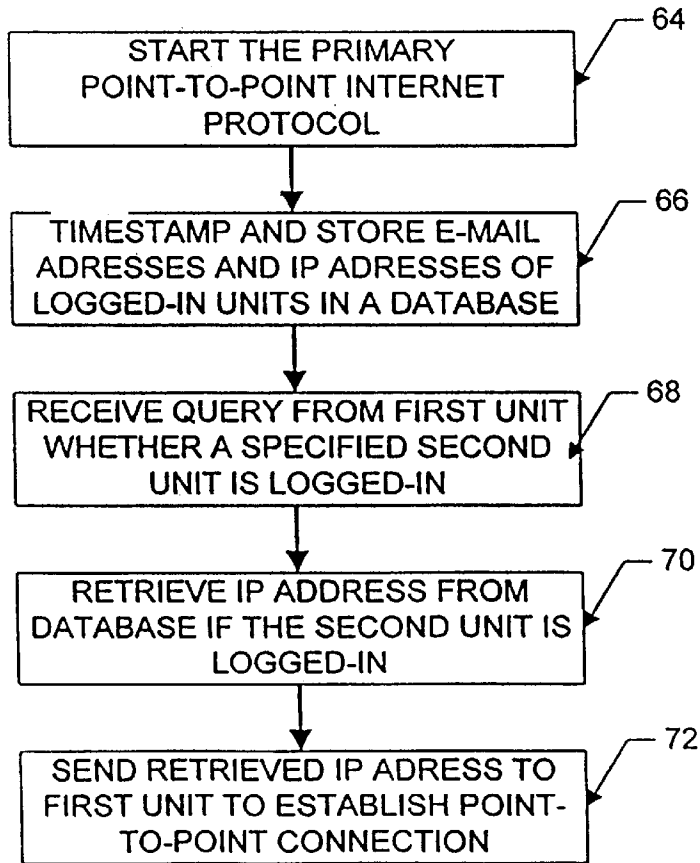


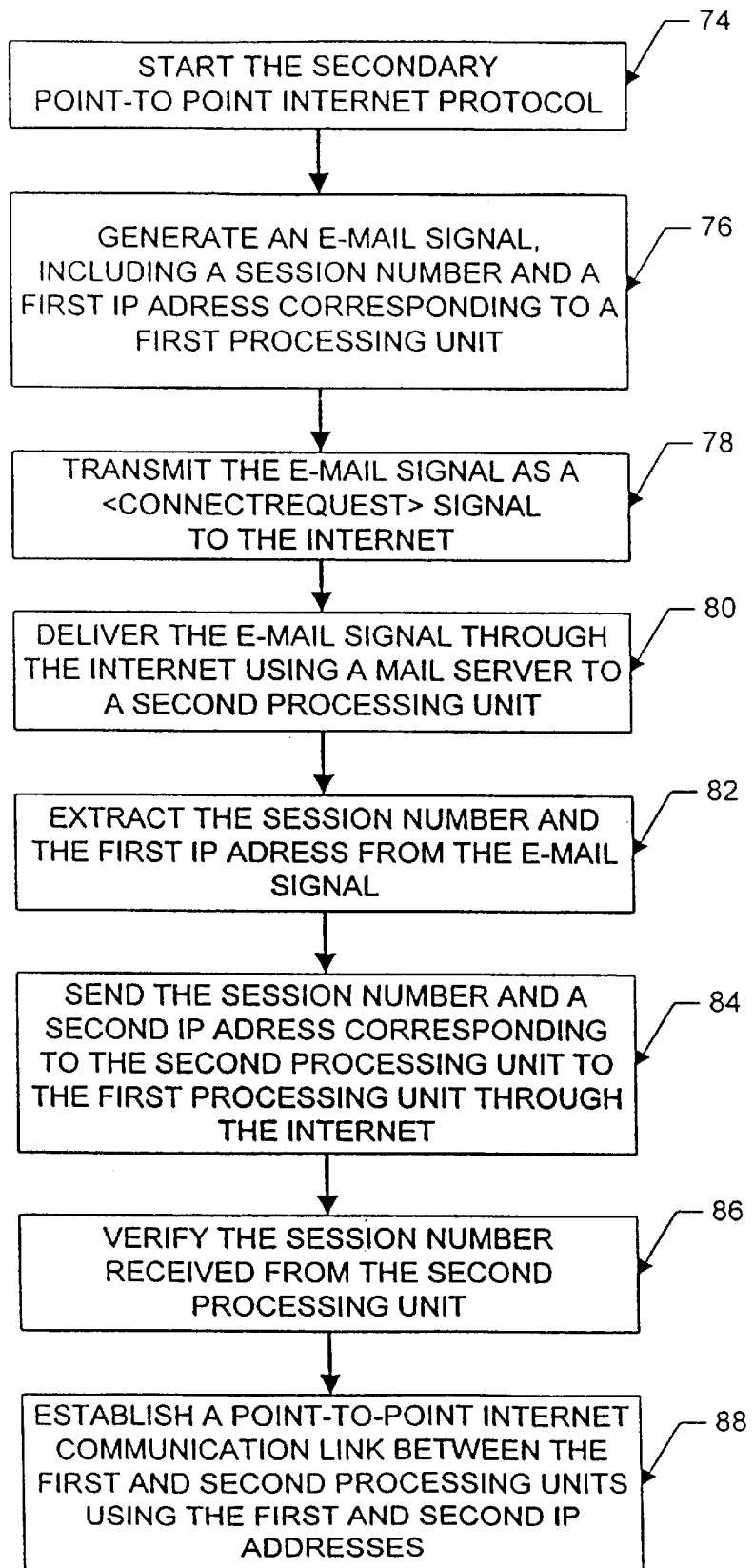
Figure 6



**Figure 7**



**Figure 8**

**Figure 9**



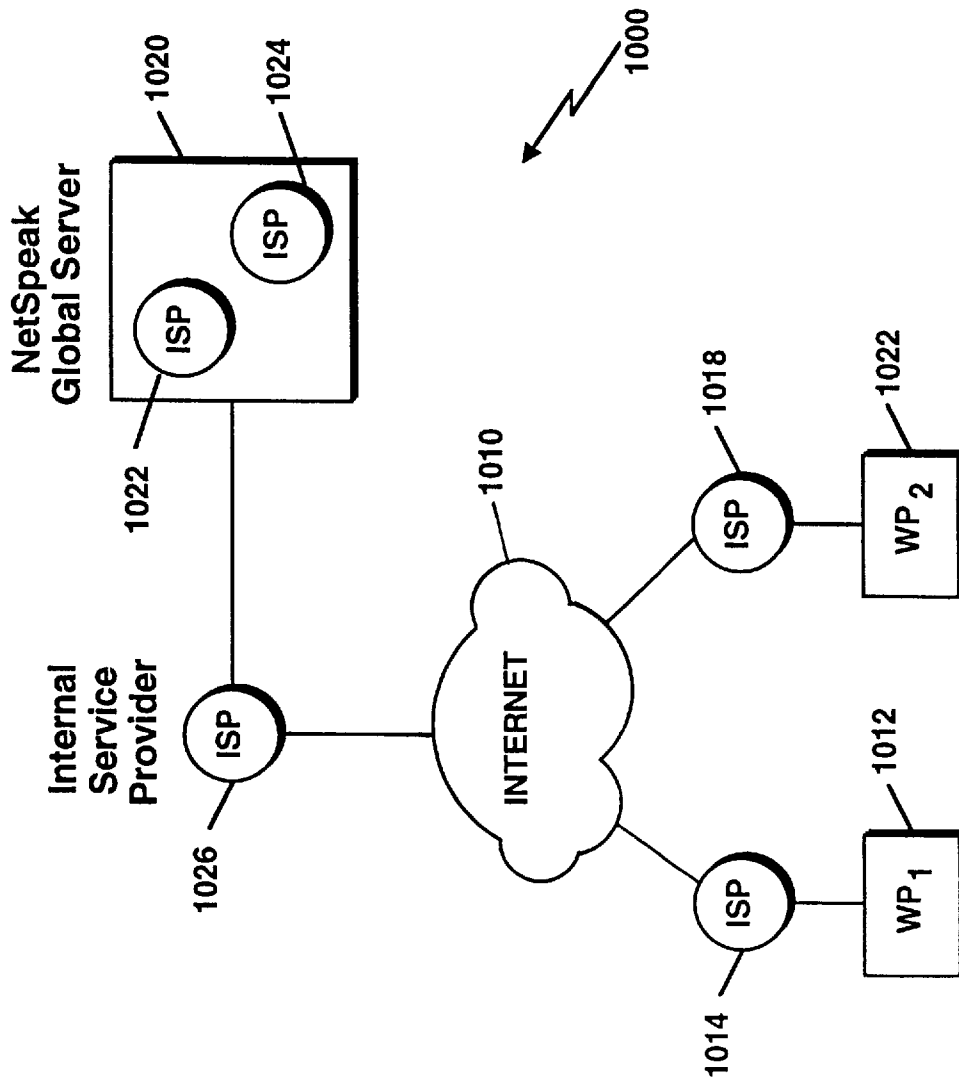


Figure 10

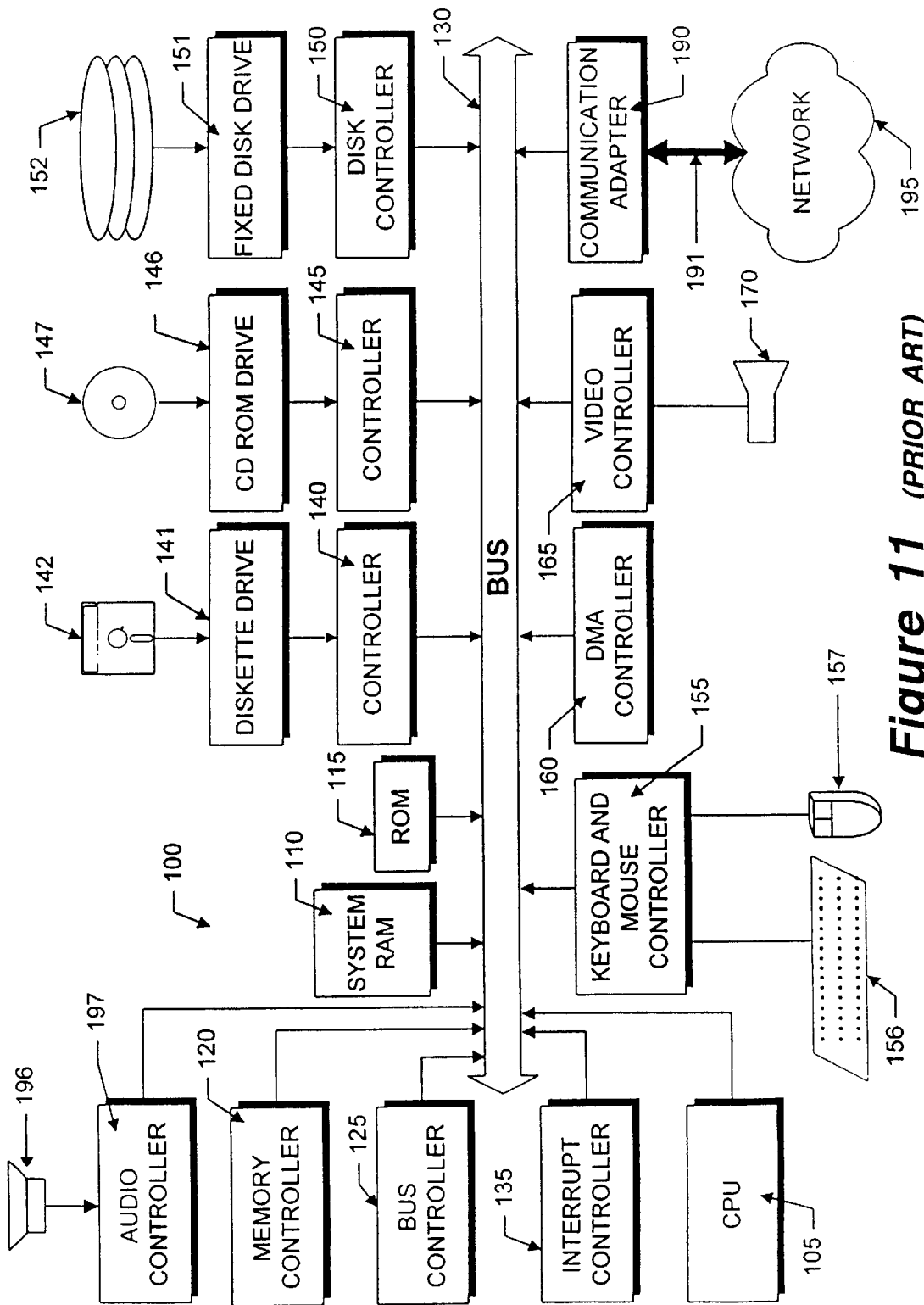
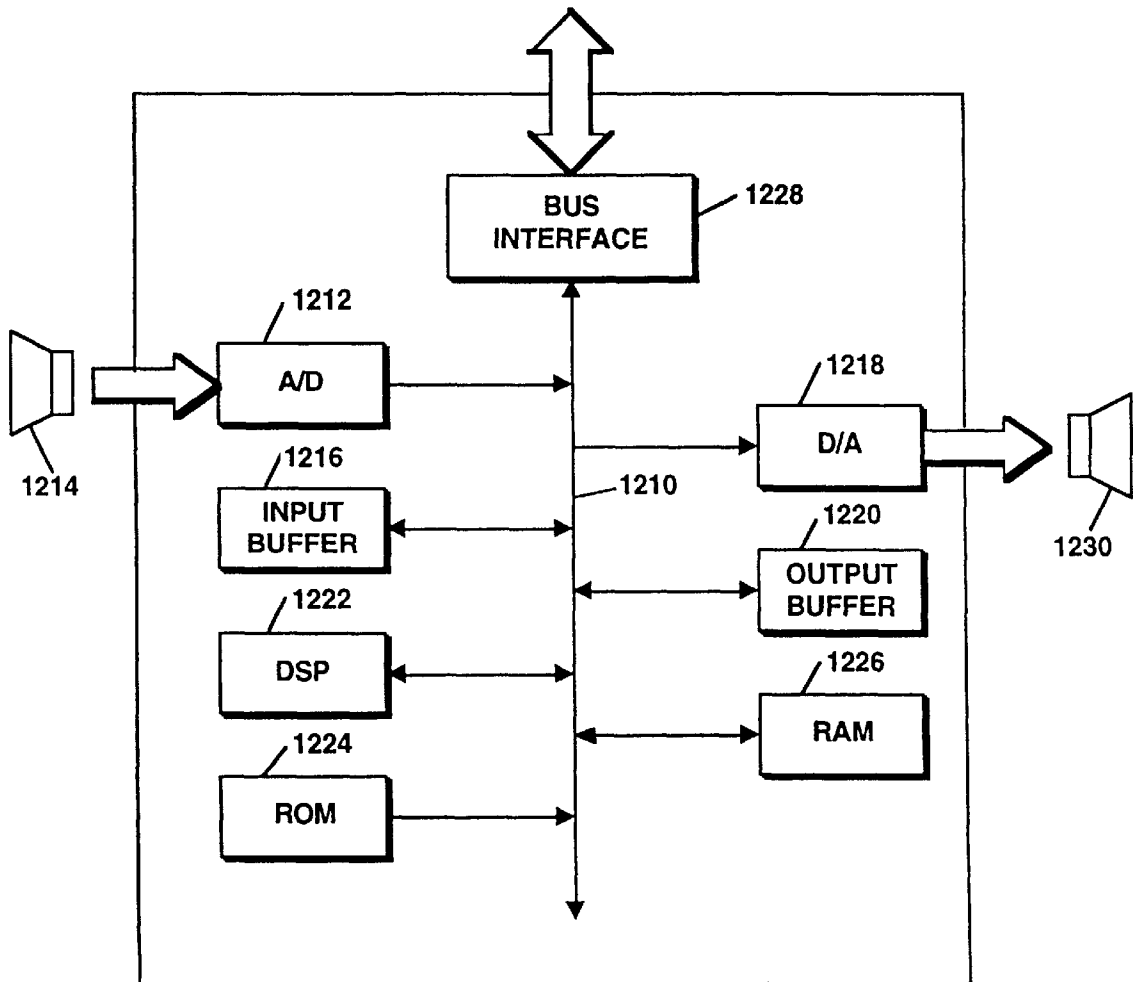


Figure 11 (PRIOR ART)



**FIGURE 12** (PRIOR ART)

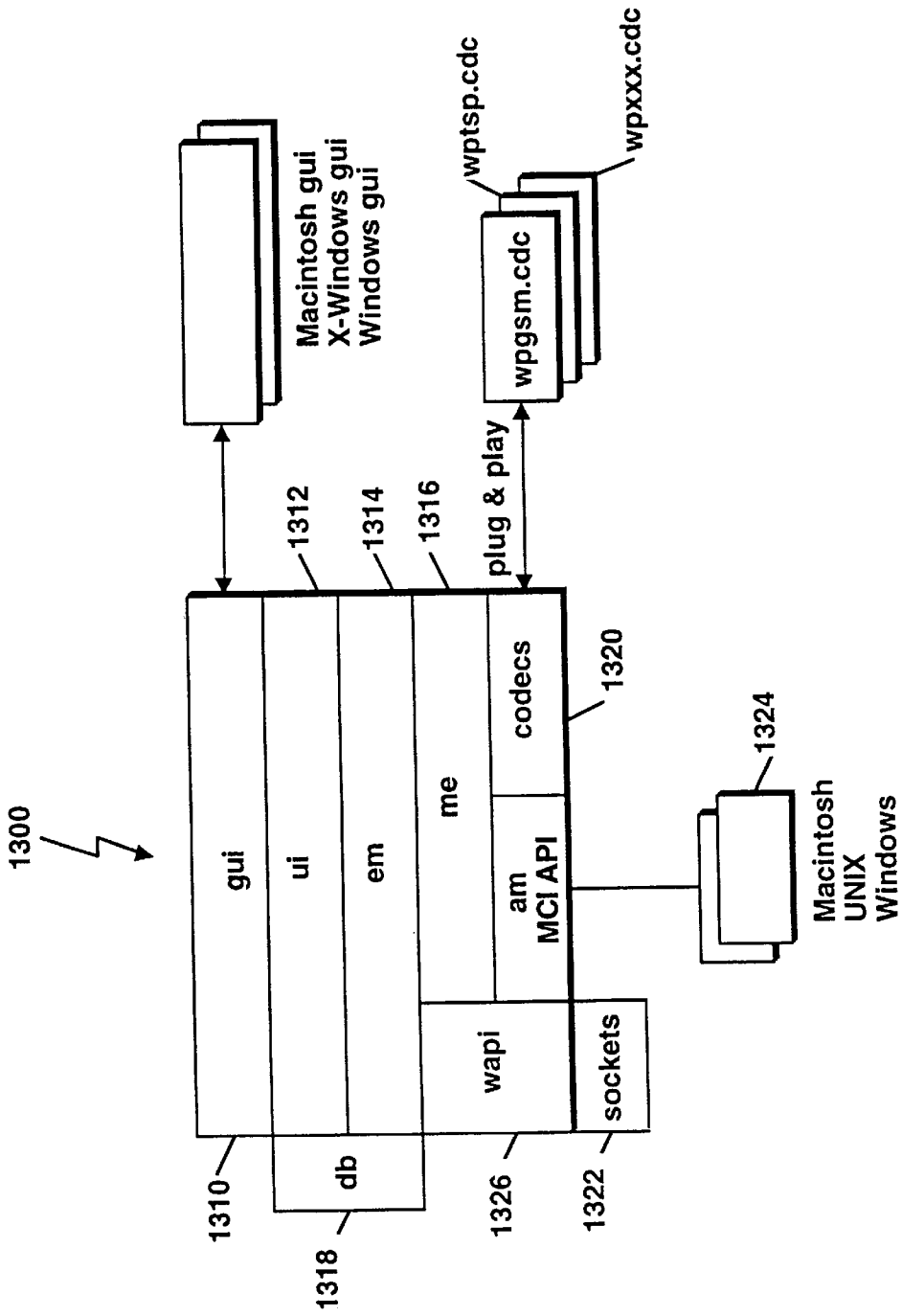
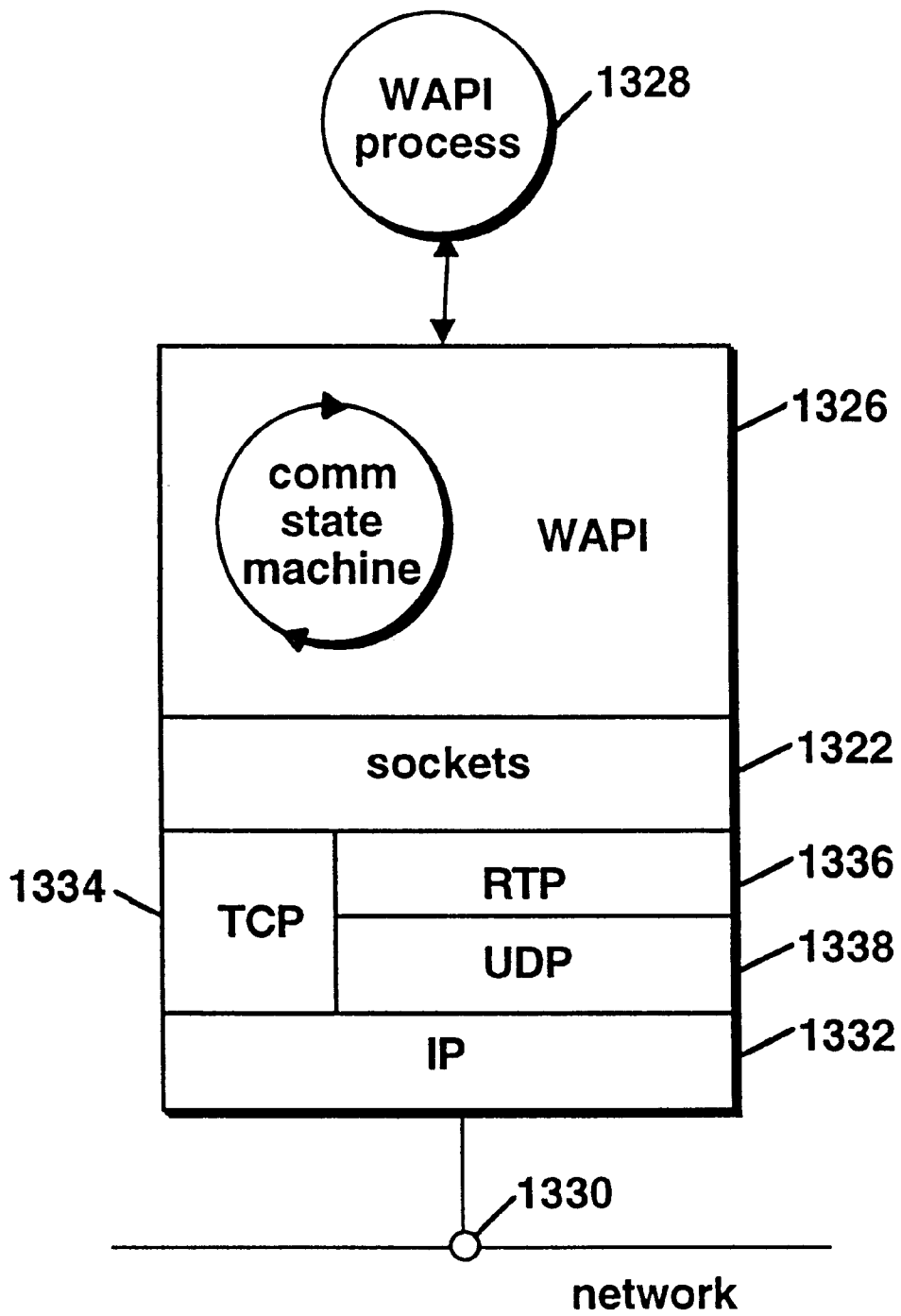


Figure 13 A



**FIGURE 13 B**

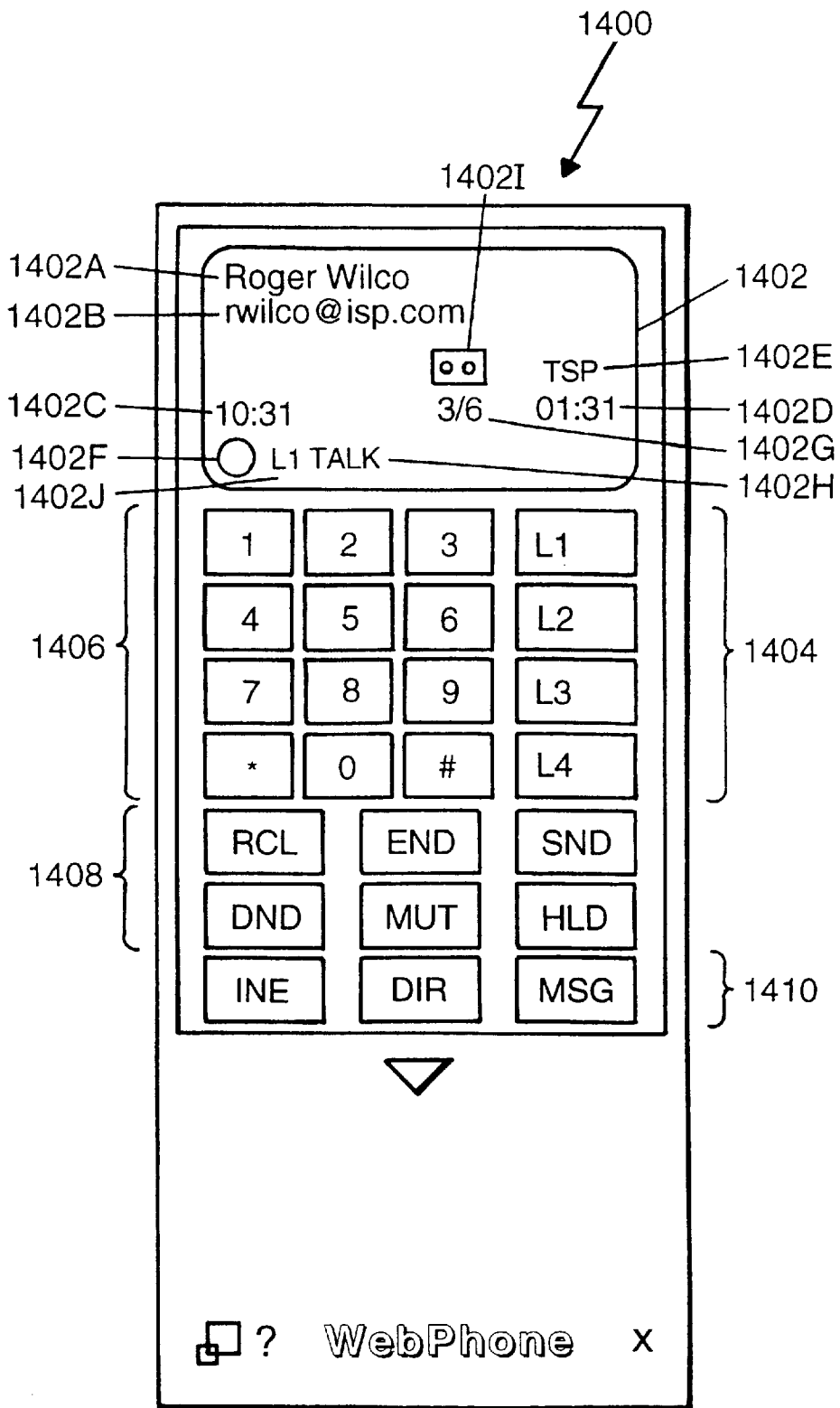


Figure 14

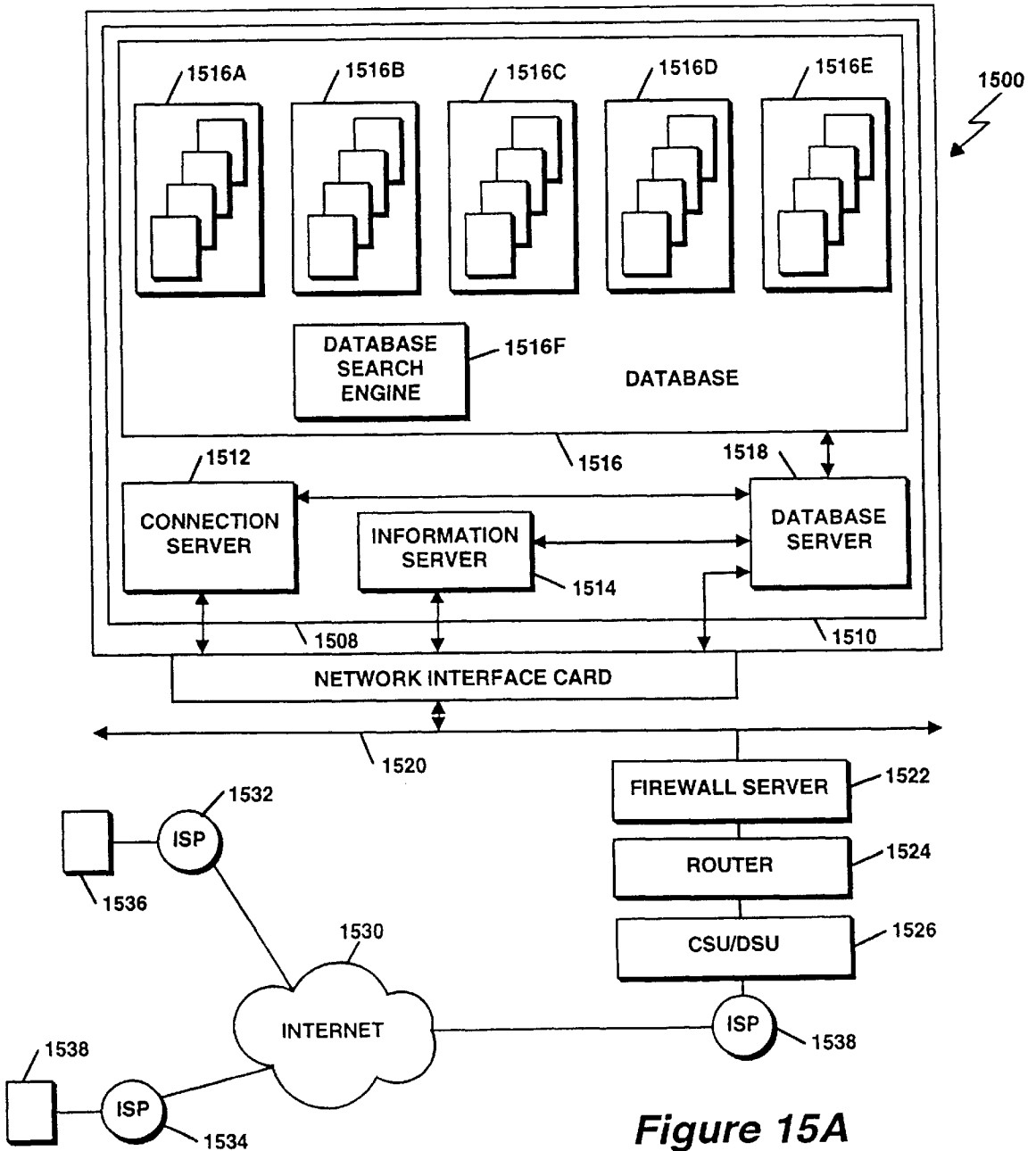


Figure 15A

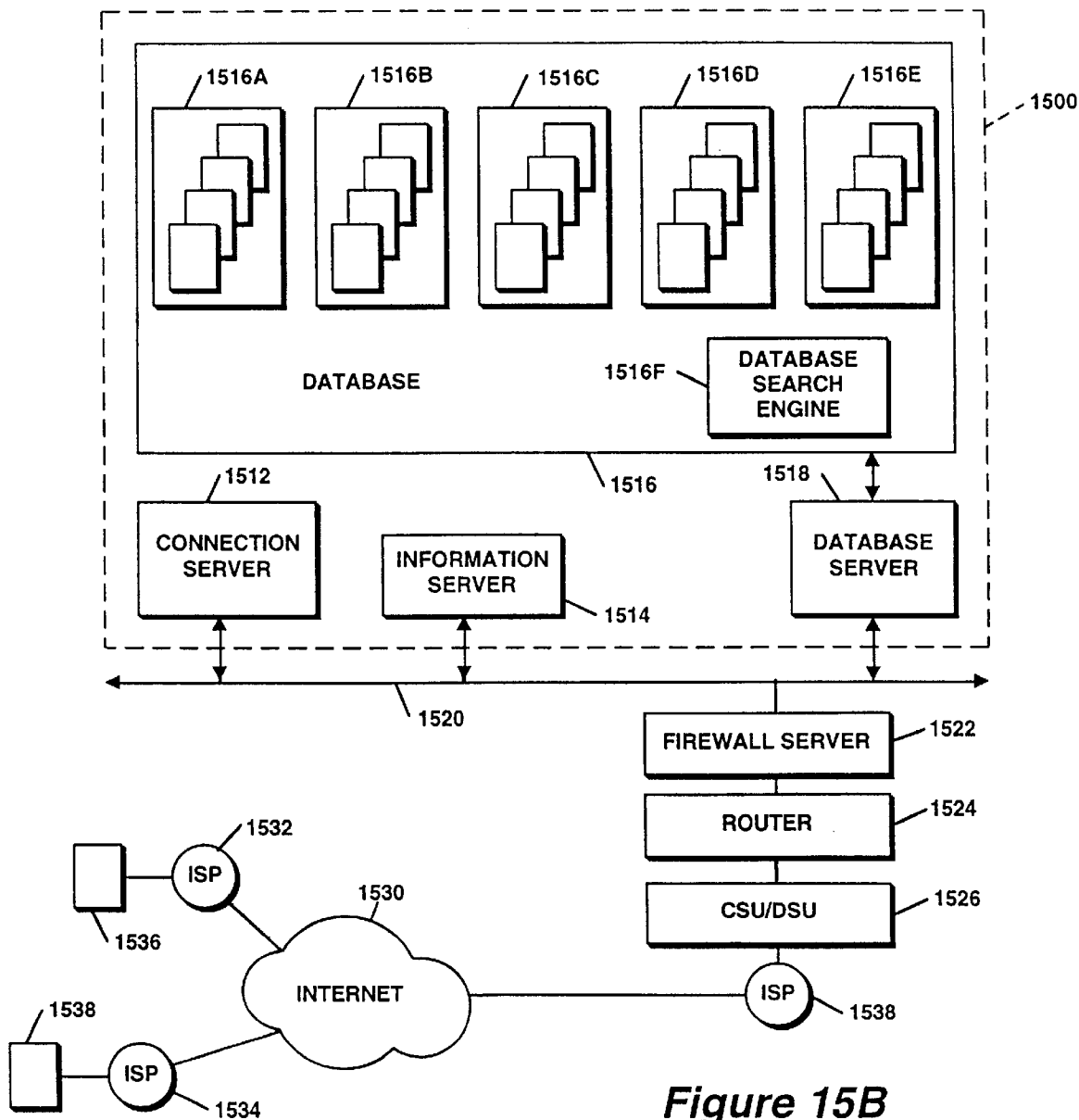


Figure 15B



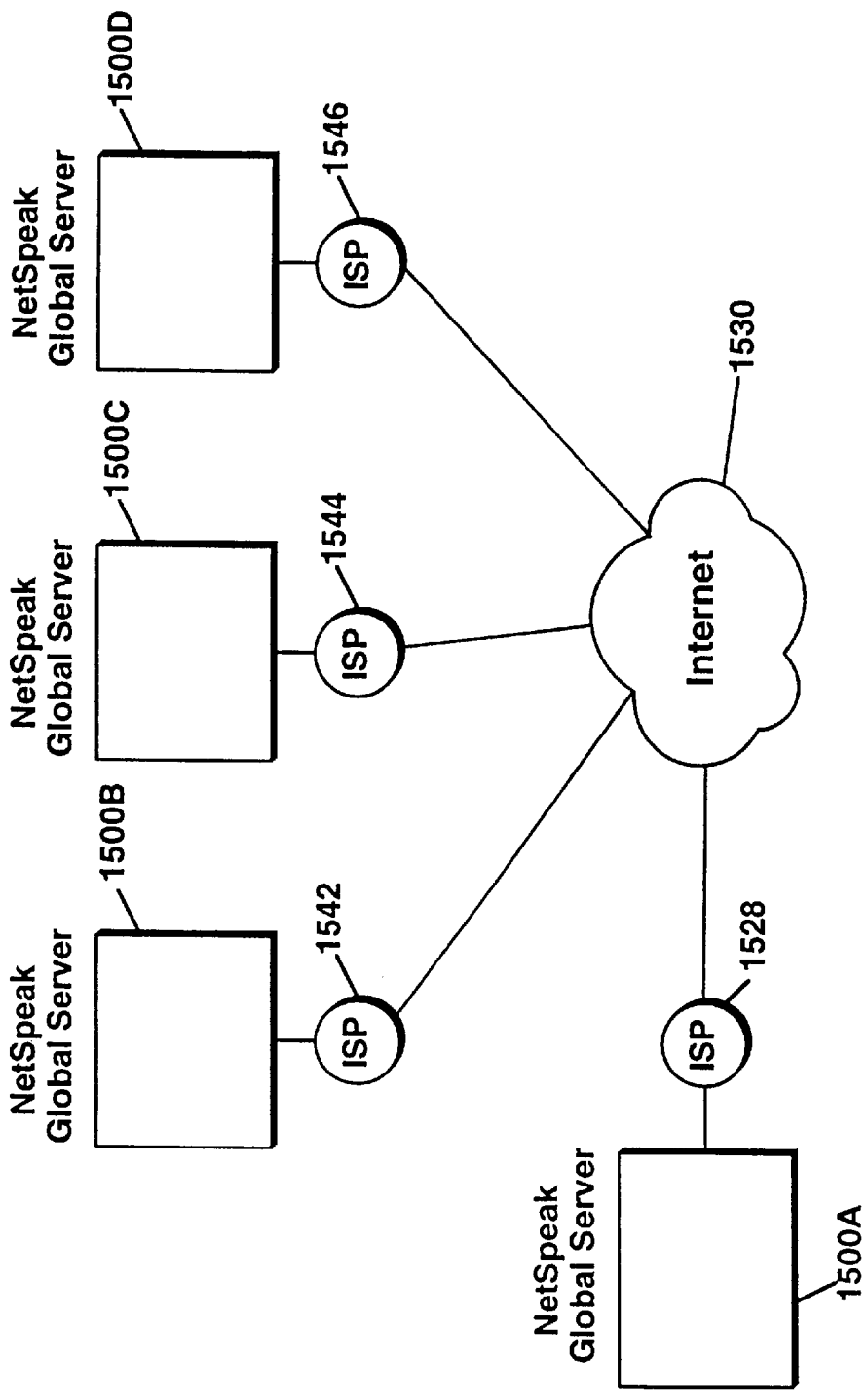


Figure 15C

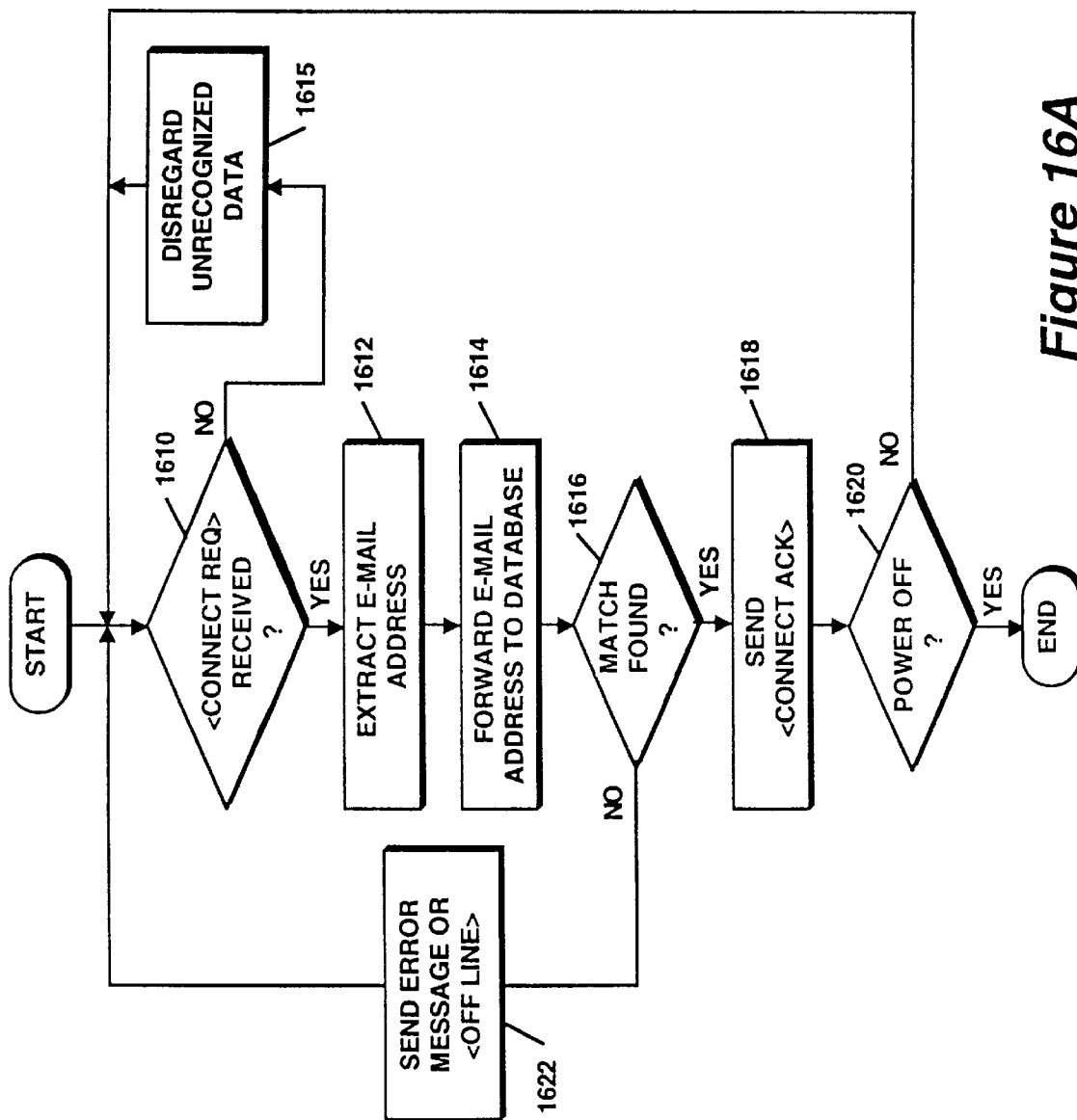


Figure 16A

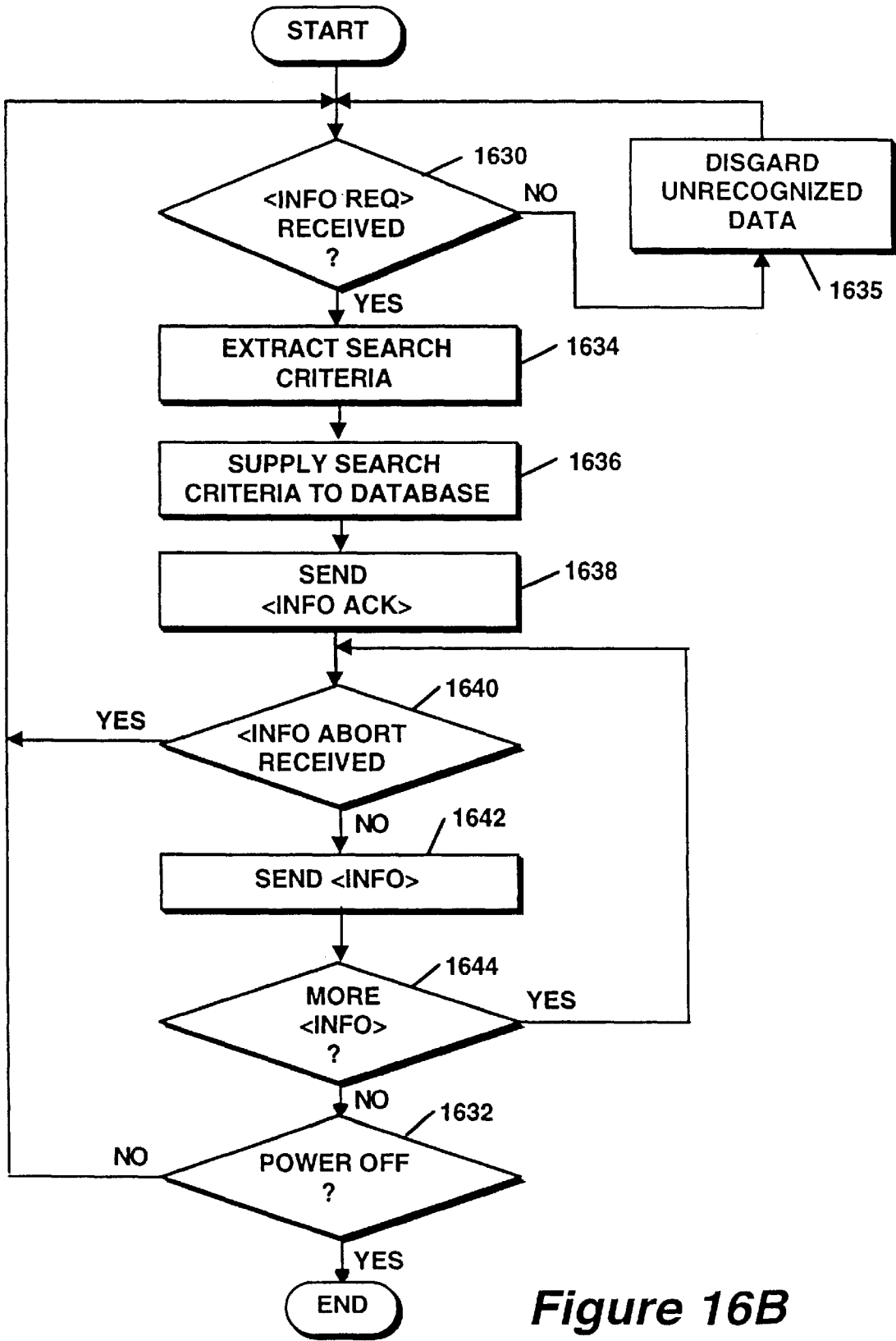


Figure 16B

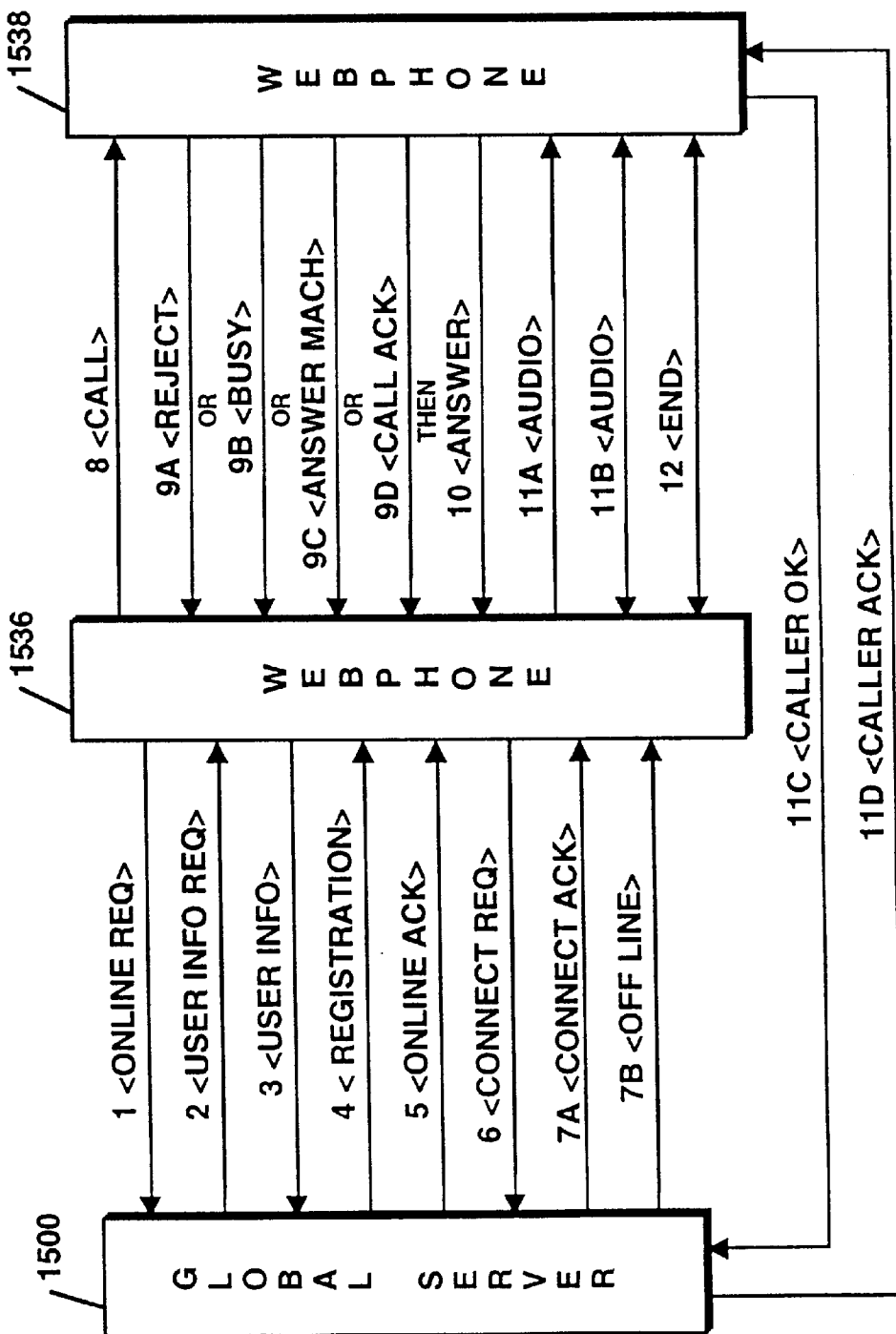


Figure 17A

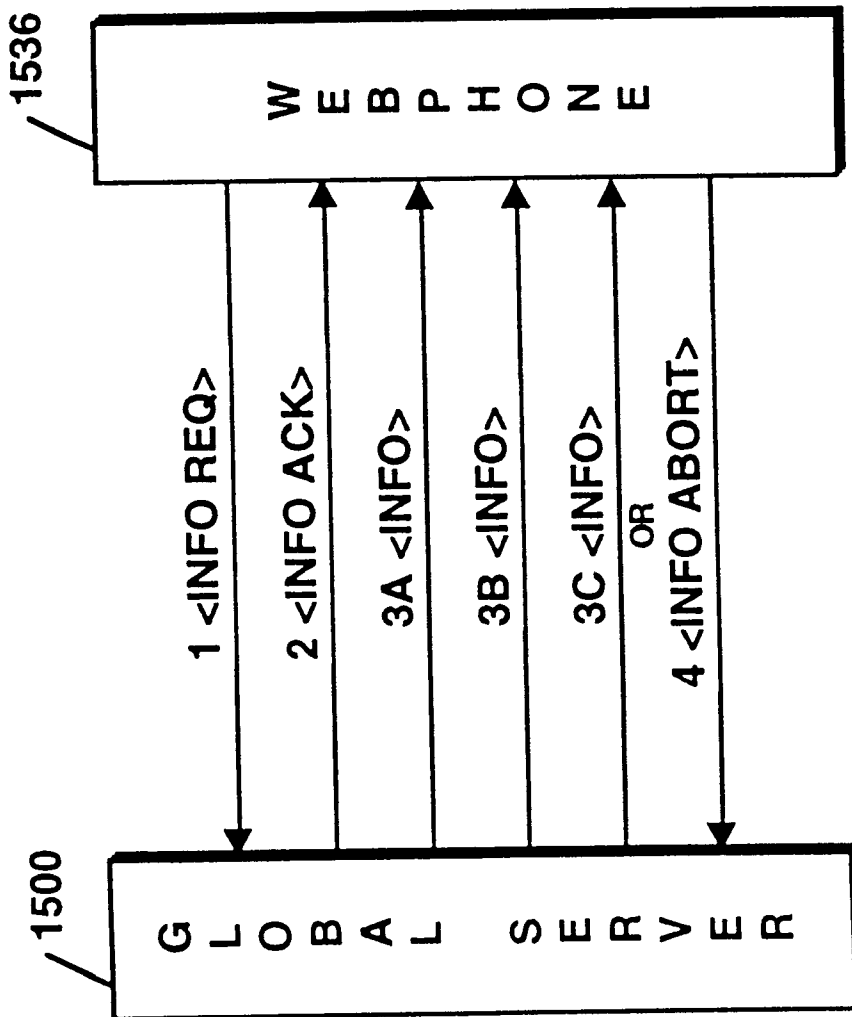


Figure 17B

## METHOD AND APPARATUS FOR DYNAMICALLY DEFINING DATA COMMUNICATION UTILITIES

### RELATED APPLICATIONS

This application is a continuation-in-part of U.S. patent application Ser. No. 08/523,115 entitled Point-to-Point Internet Protocol, by Glenn W. Hutton, filed Sep. 25, 1995, commonly assigned, the subject matter of which is incorporated herein by reference.

To the extent that any matter contained herein is not already disclosed in the above-identified parent application, this application claims priority to United States provisional patent application 60/025,415 entitled Internet Telephony Apparatus and Method by Mattaway et al., filed Sep. 4, 1996, and United States provisional patent application serial number 60/024,251 entitled System and Methods for Point-To-Point Communications Over a Computer Network, by Mattaway et al., filed Aug. 21, 1996.

In addition, this application is one of a number of related applications filed on an even date herewith and commonly assigned, the subject matters of which are incorporated herein by reference, including the following:

U.S. patent application Ser. No. 08/719,894, entitled Directory Server For Providing Dynamically Assigned Network Protocol Addresses, by Mattaway et al.;

U.S. patent application Ser. No. 08/721,316, entitled Graphic User Interface For Internet Telephony Application, by Mattaway et al.;

U.S. patent application Ser. No. 08/719,554, entitled Point-to-point Computer Network Communication Utility Utilizing Dynamically Assigned Network Protocol Addresses, by Mattaway et al.;

U.S. patent application Ser. No. 08/719,891, entitled Method And Apparatus For Distribution And Presentation Of Multimedia Data Over A Computer Network, by Mattaway et al.;

U.S. patent application Ser. No. 08/719,898, entitled Method And Apparatus For Providing Caller Identification Based Out-going Messages In A Computer Telephony Environment, by Mattaway et al.;

U.S. patent application Ser. No. 08/718,911, entitled Method And Apparatus For Providing Caller Identification Based Call Blocking In A Computer Telephony Environment, by Mattaway et al.; and

U.S. patent application Ser. No. 08/719,639, entitled Method And Apparatus For Providing Caller Identification Responses In A Computer Telephony Environment, by Mattaway et al.

### FIELD OF THE INVENTION

The present invention relates, in general, to data processing systems, and more specifically, to a method and apparatus for facilitating communications over computer networks.

### BACKGROUND OF THE INVENTION

The increased popularity of on-line services such as AMERICA ONLINE™, COMPUSERVE®, and other services such as Internet gateways have spurred applications to provide multimedia, including video and voice clips, to online users. An example of an online voice clip application is VOICE E-MAIL FOR WINCIM and VOICE E-MAIL FOR AMERICA ONLINE™, available from Bonzi

Software, as described in "Simple Utilities Send Voice E-Mail Online", MULTIMEDIA WORLD, VOL. 2, NO. 9, August 1995, p. 52. Using such Voice E-Mail software, a user may create an audio message to be sent to a predetermined E-mail address specified by the user.

Generally, devices interfacing to the Internet and other online services may communicate with each other upon establishing respective device addresses. One type of device address is the Internet Protocol (IP) address, which acts as a pointer to the device associated with the IP address. A typical device may have a Serial Line Internet Protocol or Point-to-Point Protocol (SLIP/PPP) account with a permanent IP address for receiving E-mail, voicemail, and the like over the Internet. E-mail and voicemail is generally intended to convey text, audio, etc., with any routing information such as an IP address and routing headers generally being considered an artifact of the communication, or even gibberish to the recipient.

Devices such as a host computer or server of a company may include multiple modems for connection of users to the Internet, with a temporary IP address allocated to each user. For example, the host computer may have a general IP address "XXX.XXX.XXX", and each user may be allocated a successive IP address of XXX.XXX.XXX.10, XXX.XXX.XXX.11, XXX.XXX.XXX.12, etc. Such temporary IP addresses may be reassigned or recycled to the users, for example, as each user is successively connected to an outside party. For example, a host computer of a company may support a maximum of 254 IP addresses which are pooled and shared between devices connected to the host computer.

Permanent IP addresses of users and devices accessing the Internet readily support point-to-point communications of voice and video signals over the Internet. For example, realtime video teleconferencing has been implemented using dedicated IP addresses and mechanisms known as reflectors. Due to the dynamic nature of temporary IP addresses of some devices accessing the Internet, point-to-point communications in realtime of voice and video have been generally difficult to attain.

The ability to locate users having temporary or dynamically assigned Internet Protocol addresses has been difficult without the user manually initiating the communication. Accordingly, spontaneous, real-time communications with such users over computer networks, particularly the Internet, have been impractical. Further, even if the dynamically assigned Internet Protocol address of a client process or user was obtained and such communications were possible, it is desirable to verify the validity of the communication with a central authority. Further, it is desirable to have a communication utility capable of performing a plurality of predefined functions, any of which may be defined on a dynamic basis by either the user or by a central authority.

Accordingly, a need exists for a way to determine whether computer users are actively connected to a computer network.

A further need exists for a way to obtain the dynamically assigned Internet Protocol address of a user or client process currently connected to a computer network, particularly the Internet.

An even further need exists for a way to validate communications received over a computer network.

Yet a further need exists for a communication utility capable of establishing real-time, point-to-point communications over a computer network, such a utility having plurality of features dynamically definable by either the user or by a central authority.

## SUMMARY OF THE INVENTION

The above deficiencies in the prior art and the previously described needs are fulfilled by the present invention which provides, a computer network communication utility having a plurality of selectively definable functions. According to one embodiment of the present invention, a method of dynamically defining the functionality of a client process with a server comprises the steps of receiving a client identifier from a client process, determining which of a plurality of functions the identified client process is authorized perform, and transmitting to the client process a function identifier defining the plurality of authorized functions.

According to another embodiment of the present invention, a computer program product for use with a computer system operatively coupled to other computer systems as well as a server over a computer network includes a computer usable medium having program code means embodied therein for transmitting to the server a function identifier request defining which of a plurality of predefined features the client process wishes to utilize, and, program code means for receiving from the server a function identifier authorizing selected of the predefined functions.

## BRIEF DESCRIPTION OF THE DRAWINGS

The features of the invention will become more readily apparent and may be better understood by referring to the following detailed description of an illustrative embodiment of the present invention, taken in conjunction with the accompanying drawings, in which:

FIG. 1 illustrates, in block diagram format, a system for the disclosed point-to-point Internet protocol;

FIG. 2 illustrates, in block diagram format, the system using a secondary point-to-point Internet protocol;

FIG. 3 illustrates, in block diagram format, the system of FIGS. 1-2 with the point-to-point Internet protocol established;

FIG. 4 is another block diagram of the system of FIGS. 1-2 with audio communications being conducted;

FIG. 5 illustrates a display screen for a processing unit;

FIG. 6 illustrates another display screen for a processing unit;

FIG. 7 illustrates a flowchart of the initiation of the point-to-point Internet protocols;

FIG. 8 illustrates a flowchart of the performance of the primary point-to-point Internet protocols;

FIG. 9 illustrates a flowchart of the performance of the secondary point-to-point Internet protocol;

FIG. 10 illustrates schematically a computer network over which the present invention may be utilized;

FIG. 11 is a block diagram of a computer system suitable for use with the present invention;

FIG. 12 is a block diagram of an audio processing card suitable for use with the computer system of FIG. 10;

FIGS. 13 A-B are schematic block diagrams of the elements comprising the inventive computer network telephony mechanism of the present invention;

FIG. 14 is a screen capture illustrating an exemplary user interface of the present invention;

FIGS. 15A-C are schematic diagrams illustrating the architecture of the connection server apparatus suitable for use with the present invention;

FIG. 16A is a flowchart illustrating the process steps performed by the connection server in accordance with the present invention;

FIG. 16B is a flowchart illustrating the process steps performed in accordance with the information server of the present invention; and

FIGS. 17A-B are schematic block diagrams illustrating packet transfer sequences in accordance with the communication protocol of the present invention.

## DETAILED DESCRIPTION

Referring now in specific detail to the drawings, with like reference numerals identifying similar or identical elements, as shown in FIG. 1, the present disclosure describes a point-to-point network protocol and system 10 for using such a protocol.

In an exemplary embodiment, the system 10 includes a first processing unit 12 for sending at least a voice signal from a first user to a second user. The first processing unit 12 includes a processor 14, a memory 16, an input device 18, and an output device 20. The output device 20 includes at least one modem capable of, for example, 14.4 Kilobit-per-second communications and operatively connected via wired and/or wireless communication connections to the Internet or other computer networks such as an Intranet, i.e., a private computer network. One skilled in the art would understand that the input device 18 may be implemented at least in part by the modem of the output device 20 to allow input signals from the communication connections to be received. The second processing unit 22 may have a processor, memory, and input and output devices, including at least one modem and associated communication connections, as described above for the first processing unit 12. In an exemplary embodiment, each of the processing units 12, 22 may execute the WEBPHONE® Internet telephony application available from NetSpeak Corporation, Boca Raton, Fla., which is capable of performing the disclosed point-to-point Internet protocol and system 10, as described herein.

The first processing unit 12 and the second processing unit 22 are operatively connected to the Internet 24 by communication devices and software known in the art, such as an Internet Service Provider (ISP) or an Internet gateway. The processing units 12, 22 may be operatively interconnected through the Internet 24 to a connection server 26, and may also be operatively connected to a mail server 28 associated with the Internet 24.

The connection server 26 includes a processor 30, a timer 32 for generating time stamps, and a memory such as a database 34 for storing, for example, E-mail and Internet Protocol (IP) addresses of logged-in units. In an exemplary embodiment, the connection server 26 may be a SPARC 5 server or a SPARC 20 server, available from SUN MICROSYSTEMS, INC., Mountain View, Calif., having a central processing unit (CPU) as processor 30, an operating system (OS) such as UNIX, for providing timing operations such as maintaining the timer 32, a hard drive or fixed drive, as well as dynamic random access memory (DRAM) for storing the database 34, and a keyboard and display and/or other input and output devices (not shown in FIG. 1). The database 34 may be an SQL database available from ORACLE or INFORMIX.

In an exemplary embodiment, the mail server 28 may be implemented with a Post Office Protocol (POP) Version 3 mail server and the Simple Mail Transfer Protocol (SMTP), including a processor, memory, and stored programs operating in a UNIX environment, or, alternatively, another OS, to process E-mail capabilities between processing units and devices over the Internet 24.

In the illustrative embodiment, the POP protocol is utilized to retrieve E-mail messages from mail server **28** while the SMTP protocol is used to submit E-mail message to Internet **24**.

The first processing unit **12** may operate the disclosed point-to-point Internet protocol by a computer program described hereinbelow in conjunction with FIG. **6**, which may be implemented from compiled and /or interpreted source code in the C++ programming language and which may be downloaded to the first processing unit **12** from an external computer. The operating computer program may be stored in the memory **16**, which may include about 8 MB RAM and/or a hard or fixed drive having about 8 MB of available memory. Alternatively, the source code may be implemented in the first processing unit **12** as firmware, as an erasable read only memory (EPROM), etc. It is understood that one skilled in the art would be able to use programming languages other than C++ to implement the disclosed point-to-point network protocol and system **10**.

The processor **14** receives input commands and data from a first user associated with the first processing unit **12** through the input device **18**, which may be an input port connected by a wired, optical, or a wireless connection for electromagnetic transmissions, or alternatively may be transferable storage media, such as floppy disks, magnetic tapes, compact disks, or other storage media including the input data from the first user.

The input device **18** may include a user interface (not shown) having, for example, at least one button actuated by the user to input commands to select from a plurality of operating modes to operate the first processing unit **12**. In alternative embodiments, the input device **18** may include a keyboard, a mouse, a touch screen, and/or a data reading device such as a disk drive for receiving the input data from input data files stored in storage media such as a floppy disk or, for example, an 8 mm storage tape. The input device **18** may alternatively include connections to other computer systems to receive the input commands and data therefrom.

The first processing unit **12** may include a visual interface for use in conjunction with the input device **18** and output device **20** similar to those screens illustrated in FIGS. **5-6**, discussed below. It is also understood that alternative devices may be used to receive commands and data from the user, such as keyboards, mouse devices, and graphical user interfaces (GUI) such as WINDOWS™ 3.1 available from MICROSOFT Corporation, Redmond, Wash., and other operating systems and GUIs, such as OS/2 and OS/2 WARP, available from IBM CORPORATION, Boca Raton, Fla. Processing unit **12** may also include microphones and/or telephone handsets for receiving audio voice data and commands, speech or voice recognition devices, dual tone multi-frequency (DTMF) based devices, and/or software known in the art to accept voice data and commands and to operate the first processing unit **12**.

In addition, either of the first processing unit **12** and the second processing unit **22** may be implemented in a personal digital assistant (PDA) providing modem and E-mail capabilities and Internet access, with the PDA providing the input/output screens for mouse interactions or for touch-screen activation as shown, for example, in FIGS. **5-6**, as a combination of the input device **18** and output device **20**.

For clarity of explanation, the illustrative embodiment of the disclosed point-to-point Internet protocol and system **10** is presented as having individual functional blocks, which may include functional blocks labeled as "processor" and "processing unit". The functions represented by these blocks

may be provided through the use of either shared or dedicated hardware, including, but not limited to, hardware capable of executing software. For example, the functions of each of the processors and processing units presented herein may be provided by a shared processor or by a plurality of individual processors. Moreover, the use of the functional blocks with accompanying labels herein is not to be construed to refer exclusively to hardware capable of executing software. Illustrative embodiments may include digital signal processor (DSP) hardware, such as the AT&T DSP16 or DSP32C, read-only memory (ROM) for storing software performing the operations discussed below, and random access memory (RAM) for storing DSP results. Very large scale integration (VLSI) hardware embodiments, as well as custom VLSI circuitry in combination with a general purpose DSP circuit, may also be provided. Any and all of these embodiments may be deemed to fall within the meaning of the labels for the functional blocks as used herein.

The processing units **12, 22** are capable of placing calls and connecting to other processing units connected to the Internet **24**, for example, via dialup SLIP/PPP lines. In an exemplary embodiment, each processing unit assigns an unsigned long session number, for example, a 32-bit long sequence in a \*.ini file for each call. Each call may be assigned a successive session number in sequence, which may be used by the respective processing unit to associate the call with one of the SLIP/PPP lines, to associate a <ConnectOK> response signal with a <Connect Request> signal, and to allow for multiplexing and demultiplexing of inbound and outbound conversations on conference lines, as explained hereinafter.

For callee (or called) processing units with fixed IP addresses, the caller (or calling) processing unit may open a "socket", i.e. a file handle or address indicating where data is to be sent, and transmit a <Call> command to establish communication with the callee utilizing, for example, datagram services such as Internet Standard network layering as well as transport layering, which may include a Transport Control Protocol (TCP) or a User Datagram Protocol (UDP) on top of the IP. Typically, a processing unit having a fixed IP address may maintain at least one open socket and a called processing unit waits for a <Call> command to assign the open socket to the incoming signal. If all lines are in use, the callee processing unit sends a BUSY signal or message to the caller processing unit. As shown in FIG. **1**, the disclosed point-to-point Internet protocol and system **10** operate when a callee processing unit does not have a fixed or predetermined IP address. In the exemplary embodiment and without loss of generality, the first processing unit **12** is the caller processing unit and the second processing unit **22** is the callee processing unit. When either of processing units **12, 22** logs on to the Internet via a dial-up connection, the respective unit is provided a dynamically allocated IP address by an Internet service provider.

Upon the first user initiating the point-to-point Internet protocol when the first user is logged on to the Internet **24**, the first processing unit **12** automatically transmits its associated E-mail address and its dynamically allocated IP address to the connection server **26**. The connection server **26** then stores these addresses in the database **34** and time stamps the stored addresses using timer **32**. The first user operating the first processing unit **12** is thus established in the database **34** as an active on-line party available for communication using the disclosed point-to-point Internet protocol. Similarly, a second user operating the second processing unit **22**, upon connection to the Internet **24** through an Internet service provider, is processed by the



connection server 26 to be established in the database 34 as an active on-line party.

The connection server 26 may use the time stamps to update the status of each processing unit; for example, after 2 hours, so that the on-line status information stored in the database 34 is relatively current. Other predetermined time periods, such as a default value of 24 hours, may be configured by a systems operator.

The first user with the first processing unit 12 initiates a call using, for example, a Send command and/or a command to speedial an N<sup>TH</sup> stored number, which may be labeled [SND] and [SPD] [N], respectively, by the input device 18 and/or the output device 20, such as shown in FIGS. 5-6. In response to either the Send or speedial commands, the first processing unit 12 retrieves from memory 16 a stored E-mail address of the callee corresponding to the N<sup>TH</sup> stored number. Alternatively, the first user may directly enter the E-mail address of the callee.

The first processing unit 12 then sends a query, including the E-mail address of the callee, to the connection server 26. The connection server 26 then searches the database 34 to determine whether the callee is logged-in by finding any stored information corresponding to the callee's E-mail address indicating that the callee is active and on-line. If the callee is active and on-line, the connection server 26 then performs the primary point-to-point Internet protocol; i.e. the IP address of the callee is retrieved from the database 34 and sent to the first processing unit 12. The first processing unit 12 may then directly establish the point-to-point Internet communications with the callee using the IP address of the callee.

If the callee is not on-line when the connection server 26 determines the callee's status, the connection server 26 sends an OFF-LINE signal or message to the first processing unit 12. The first processing unit 12 may also display a message such as "Called Party Off-Line" to the first user.

When a user logs off or goes off-line from the Internet 24, the connection server 26 updates the status of the user in the database 34; for example, by removing the user's information, or by flagging the user as being off-line. The connection server 26 may be instructed to update the user's information in the database 34 by an off-line message, such as a data packet, sent automatically from the processing unit of the user prior to being disconnected from the connection server 26. Accordingly, an off-line user is effectively disabled from making and/or receiving point-to-point Internet communications.

As shown in FIGS. 2-4, the disclosed secondary point-to-point Internet protocol may be used as an alternative to the primary point-to-point Internet protocol described above, for example, if the connection server 26 is non-responsive, unreachable, inoperative, and/or unable to perform the primary point-to-point Internet protocol, as a non-responsive condition. Alternatively, the disclosed secondary point-to-point Internet protocol may be used independent of the primary point-to-point Internet protocol. In the disclosed secondary point-to-point Internet protocol, the first processing unit 12 sends a <ConnectReq> message via E-mail over the Internet 24 to the mail server 28. The E-mail including the <ConnectReq> message may have, for example, the subject

[\*wp#XXXXXXXXX#nnn.nnn.nnn.#emailAddr] where nnn.nnn.nnn.nnn. is the current (i.e. temporary or permanent) IP address of the first user, and XXXXXXXX is a session number, which may be unique and associated with the request of the first user to initiate point-to-point communication with the second user.

The following E-mail messages are transmitted to a remote users post office protocol server via simple mail transport protocol using MIME by the event manager, as explained hereinafter.

```

5 <ConnectRequest>
  <CampRequest>
  <VoiceMail>
  <FileTransfer>
10 <E-mail>

```

The following E-mail messages are received from a local WebPhone users POP server via the POP protocol using MIME by the event manager, as explained hereinafter.

```

15 <Connect Request>
  <Camp Request>
  <Voice Mail>
  <File Transfer>
  <E-mail>
20 <Registration>

```

As described above, the first processing unit 12 may send the <ConnectReq> message in response to an unsuccessful attempt to perform the primary point-to-point Internet protocol. Alternatively, the first processing unit 12 may send the <ConnectReq> message in response to the first user initiating a SEND command or the like.

After the <ConnectRequest> message via E-mail is sent, the first processing unit 12 opens a socket and waits to detect a response from the second processing unit 22. A timeout timer, such as timer 32, may be set by the first processing unit 12, in a manner known in the art, to wait for a predetermined duration to receive a <ConnectOK> signal. The processor 14 of the first processing unit 12 may cause the output device 20 to output a Ring signal to the user, such as an audible ringing sound, about every 3 seconds. For example, the processor 14 may output a \*.wav file, which may be labeled RING.WAV, which is processed by the output device 20 to output an audible ringing sound.

Second processing unit 22 polls mail server 28 at an interval, for example, once a minute, to check for incoming E-mail. Generally, second processing unit 22 checks the messages stored on mail server 28 at regular intervals to wait for and detect incoming E-mail indicating a <CONNECT REQ> message from first processing unit 12.

Typically, for sending E-mail to user's having associated processing units operatively connected to a host computer or server operating an Internet gateway, E-mail for a specific user may be sent over Internet 24 and directed to the permanent IP address of the mail server providing the target user's mail services. The E-mail is transported by a standard protocol, for example, SMTP, and stored into memory (not shown in FIG. 1) associated with mail server 28.

The E-mail may subsequently be retrieved by processing unit 22 on behalf of the user with another standard protocol, for example POP 3. The actual IP address utilized by the user's processing unit is immaterial to the retrieval of E-mail, as the mail server 28 can, for example, be polled or queried from any point on the network.

Upon receiving the incoming E-mail signal from the first processing unit 12, the second processing unit 22 may assign or may be assigned a temporary IP address. Therefore, the delivery of the E-mail through the Internet 24 provides the second processing unit 22 with a session number as well as IP addresses of both the first processing unit 12 and the second processing unit 22.

Point-to-point communication may then be established by the processing unit 22 processing the E-mail signal to extract

the <ConnectRequest> message, including the IP address of the first processing unit 12 and the session number. The second processing unit 22 may then open a socket and generate a <ConnectOK> response signal, which includes the temporary IP address of the second processing unit 22 as well as the session number of the first processing unit.

The second processing unit 22 sends the <ConnectOK> signal directly over the Internet 24 to the IP address of the first processing unit 12 without processing by the mail server 28, and a timeout timer of the second processing unit 22 may be set to wait and detect a <Call> signal expected from the first processing unit 12.

Real-time point-to-point communication of audio signals over the Internet 24, as well as video and voicemail, may thus be established and supported without requiring permanent IP addresses to be assigned to either of the users or processing units 12, 22. For the duration of the realtime point-to-point link, the relative permanence of the current IP addresses of the processing units 12, 22 is sufficient, whether the current IP addresses were permanent (i.e. predetermined or preassigned) or temporary (i.e. assigned upon initiation of the point-to-point communication).

In the exemplary embodiment, a first user operating the first processing unit 12 is not required to be notified by the first processing unit 12 that an E-mail is being generated and sent to establish the point-to-point link with the second user at the second processing unit 22. Similarly, the second user is not required to be notified by the second processing unit 22 that an E-mail has been received and/or a temporary IP address is associated with the second processing unit 22. The processing units 12, 22 may perform the disclosed point-to-point Internet protocol automatically upon initiation of the point-to-point communication command by the first user without displaying the E-mail interactions to either user. Accordingly, the disclosed point-to-point Internet protocol may be transparent to the users. Alternatively, either of the first and second users may receive, for example, a brief message of "CONNECTION IN PROGRESS" or the like on a display of the respective output device of the processing units 12, 22.

After the initiation of either the primary or the secondary point-to-point Internet protocols described above in conjunction with FIGS. 1-2, the point-to-point communication link over the Internet 24 may be established as shown in FIGS. 3-4 in a manner known in the art. For example, referring to FIG. 3, upon receiving the <ConnectOK> signal from the second processing unit 22, the first processing unit 12 extracts the IP address of the second processing unit 22 and the session number, and the session number sent from the second processing unit 22 is then checked with the session number originally sent from the first processing unit 12 in the <ConnectReq> message as E-mail. If the session numbers sent and received by the processing unit 12 match, then the first processing unit 12 sends a <Call> signal directly over the Internet 24 to the second processing unit 22; i.e. using the IP address of the second processing unit 22 provided to the first processing unit 12 in the <ConnectOK> signal.

Upon receiving the <Call> signal, the second processing unit 22 may then begin a ring sequence, for example, by indicating or annunciating to the second user that an incoming call is being received. For example, the word "CALL" may be displayed on the output device of the second processing unit 22. The second user may then activate the second processing unit 22 to receive the incoming call.

Referring to FIG. 4, after the second processing unit 22 receives the incoming call, realtime audio and/or video

conversations may be conducted in a manner known in the art between the first and second users through the Internet 24, for example, by compressed digital audio signals. Each of the processing units 12, 22 also display to each respective user the words "IN USE" to indicate that the point-to-point communication link is established and audio or video signals are being transmitted.

In addition, either user may terminate the point-to-point communication link by, for example, activating a termination command, such as by activating an [END] button or icon on a respective processing unit, causing the respective processing unit to send an <End> signal which causes both processing units to terminate the respective sockets, as well as to perform other cleanup commands and functions known in the art.

FIGS. 5-6 illustrate examples of display screens 36 which may be output by a respective output device of each processing unit 12, 22 of FIGS. 1-4 for providing the disclosed point-to-point Internet protocol and system 10. Such display screens may be displayed on a display of a personal computer (PC) or a PDA in a manner known in the art.

As shown in FIG. 5, a first display screen 36 includes a status area 38 for indicating, for example, a called user by name and/or by IP address or telephone number; a current function such as C2; a current time; a current operating status such as "IN USE", and other control icons such as a down arrow icon 40 for scrolling down a list of parties on a current conference line. The operating status may include such annunciators as "IN USE," "IDLE," "BUSY," "NO ANSWER," "OFFLINE," "CALL," "DIALING," "MESSAGES," and "SPEEDDIAL."

Other areas of the display screen 36 may include activation areas or icons for actuating commands or entering data. For example, the display screen 36 may include a set of icons 42 arranged in columns and rows including digits 0-9 and commands such as END, SND, HLD, etc. For example, the END and SND commands may be initiated as described above, and the HLD icon 44 may be actuated to place a current line on hold. Such icons may also be configured to substantially simulate a telephone handset or a cellular telephone interface to facilitate ease of use, as well as to simulate function keys of a keyboard. For example, icons labeled L1-L4 may be mapped to function keys F1-F4 on standard PC keyboards, and icons C1-C3 may be mapped to perform as combinations of function keys, such as CTRL-F1, CTRL-F2, and CTRL-F3, respectively. In addition, the icons labeled L1-L4 and C1-C3 may include circular regions which may simulate lamps or light emitting diodes (LEDs) which indicate that the function or element represented by the respective icon is active or being performed.

Icons L1-L4 may represent each of 4 lines available to the caller, and icons C1-C3 may represent conference calls using at least one line to connect, for example, two or more parties in a conference call. The icons L1-L4 and C1-C3 may indicate the activity of each respective line or conference line. For example, as illustrated in FIG. 5, icons L1-L2 may have lightly shaded or colored circles, such as a green circle, indicating that each of lines 1 and 2 are in use, while icons L3-L4 may have darkly shaded or color circles, such as a red or black circle, indicating that each of lines 3 and 4 are not in use. Similarly, the lightly shaded circle of the icon labeled C2 indicates that the function corresponding to C2 is active, as additionally indicated in the status area 38, while darkly shaded circles of icons labeled C1 and C3 indicate that such corresponding functions are not active.

The icons 42 are used in conjunction with the status area 38. For example, using a mouse for input, a line that is in

use, as indicated by the lightly colored circle of the icon, may be activated to indicate a party's name by clicking a right mouse button for 5 seconds until another mouse click is actuated or the [ESC] key or icon is actuated. Thus, the user may switch between multiple calls in progress on respective lines.

Using the icons as well as an input device such as a mouse, a user may enter the name or alias or IP address, if known, of a party to be called by either manually entering the name, by using the speeddial feature, or by double clicking on an entry in a directory stored in the memory, such as the memory 16 of the first processing unit 12, where the directory entries may be scrolled using the status area 38 and the down arrow icon 40.

Once a called party is listed in the status area 38 as being active on a line, the user may transfer the called party to another line or a conference line by clicking and dragging the status area 38, which is represented by a reduced icon 46. Dragging the reduced icon 46 to any one of line icons L1-L4 transfers the called party in use to the selected line, and dragging the reduced icon 46 to any one of conference line icons C1-C3 adds the called party to the selected conference call.

Other features may be supported, such as icons 48-52, where icon 48 corresponds to, for example, an ALT-X command to exit the communication facility of a processing unit, and icon 50 corresponds to, for example, an ALT-M command to minimize or maximize the display screen 36 by the output device of the processing unit. Icon 52 corresponds to an OPEN command, which may, for example, correspond to pressing the 0 key on a keyboard, to expand or contract the display screen 36 to represent the opening and closing of a cellular telephone. An "opened" configuration is shown in FIG. 5, and a "closed" configuration is shown in FIG. 6. In the "opened" configuration, additional features such as output volume (VOL) controls, input microphone (MIC) controls, waveform (WAV) sound controls, etc.

The use of display screens such as those shown in FIGS. 5-6 provided flexibility in implementing various features available to the user. It is to be understood that additional features such as those known in the art may be supported by the processing units 12, 22.

Alternatively, it is to be understood that one skilled in the art may implement the processing units 12, 22 to have the features of the display screens in FIGS. 5-6 in hardware; i.e. a wired telephone or wireless cellular telephone may include various keys, LEDs, liquid crystal displays (LCDs), and touchscreen actuators corresponding to the icons and features shown in FIGS. 5-6. In addition, a PC may have the keys of a keyboard and mouse mapped to the icons and features shown in FIGS. 5-6.

Referring to FIG. 7, the disclosed point-to-point Internet protocol and system 10 is illustrated. First processing unit 12 initiates the point-to-point Internet protocol in step 56 by sending a query from the first processing unit 12 to the connection server 26. If connection server 26 is operative to perform the point-to-point Internet protocol, in step 58, first processing unit 12 receives an on-line status signal from the connection server 26, such signal may include the IP address of the callee or a "Callee Off-Line" message. Next, first processing unit 12 performs the primary point-to-point Internet protocol in step 60, which may include receiving, at the first processing unit 12, the IP address of the callee if the callee is active and on-line. Alternatively, processing unit 60 may initiate and perform the secondary point-to-point Internet protocol in step 62, if connection server 26 is not operable.

Referring to FIG. 8, in conjunction with FIGS. 1 and 3-4, the disclosed point-to-point Internet protocol and system 10 are illustrated. Connection server 26 starts the primary point-to-point Internet protocol, in step 64, and timestamps and stores E-mail and IP addresses of logged-in users and processing units in the database 34 in step 66. Connection server 26 receives a query from a first processing unit 12 in step 68 to determine whether a second user or second processing unit 22 is logged-in to the Internet 24, with the second user being specified, for example, by an E-mail address. Connection server 26 retrieves the IP address of the specified user from the database 34 in step 70, if the specified user is logged-in to the Internet, and sends the retrieved IP address to the first processing unit 12 in step 72 to enable first processing unit 12 to establish point-to-point communications with the specified second user.

The disclosed secondary point-to-point Internet protocol operates as shown in FIG. 9. First processing unit 12 generates an E-mail signal, including a session number and a first IP address corresponding to a first processing unit in step 76. First processing unit 12 transmits the E-mail signal as a <ConnectRequest> signal to the Internet 24 in step 78. The E-mail signal is delivered through the Internet 24 using a mail server 28 to the second processing unit 22 in step 80. Second processing unit 22 extracts the session number and the first IP address from the E-mail signal in step 82 and transmits or sends the session number and a second IP address corresponding to the second processing unit 22, back to the first processing unit 12 through the Internet 24, in step 84. First processing unit 12 verifies the session number received from the second processing unit 22 in step 86, and establishes a point-to-point Internet communication link between the first processing unit 12 and second processing unit 22 using the first and second IP addresses in step 88.

The primary and secondary point-to-point Internet protocols previously described enable users to establish real-time direct communication links over the Internet or other computer networks without the need for any interaction with connection server 26, the connection server providing only directory and information related services.

FIG. 10 illustrates an exemplary computer network 1000 over which the invention may operate. A first processing unit 1012 is coupled to a computer network, illustrated here as the Internet 1010, through an Internet service provider 1014. Similarly, a second processing unit 1022 is coupled to Internet 1010 through Internet service provider 1018. The inventive directory server 1020 is similarly coupled to Internet 1010 through Internet service provider 1026. Directory server 1020 further comprises a connection server 1022 and information server 1024, as will be explained hereinafter. The first processing unit 1012, second processing unit 1022 and directory server 1020 are operatively coupled to each other via the Internet 1010. It will be obvious to those reasonably skilled in the art that network 1000 is not restricted to implementation over the Internet 1010 but may comprise other network configurations such as a local area network (LAN), a wide area network (WAN), a global area network or any number of private networks currently referred to as an Intranet. Such networks may be implemented with any number of hardware and software components, transmission media and network protocols. Exemplary Computer Architecture

FIG. 11 illustrates the system architecture for a computer system 1100 such as an IBM PS/2®, suitable for implementing first and second processing units 1012 and 1022, respectively, of FIG. 10, as well as global server 1020. The

exemplary computer system of FIG. 11 is for descriptive purposes only. Although the description may refer to terms commonly used in describing particular computer systems, such as in IBM PS/2 computer, the description and concepts equally apply to other computer systems ranging from personal digital assistants (PDAs) to workstations to main-frame systems.

Computer system 1100 includes a central processing unit (CPU) 1105, which may be implemented with a conventional microprocessor. System 1100 further includes a random access memory (RAM) 1110 for temporary storage of information, and a read only memory (ROM) 1115 for permanent storage of information. A memory controller 1120 is provided for controlling RAM 1110. A bus 1130 interconnects the components of computer system 1100. A bus controller 1125 is provided for controlling bus 1130. An interrupt controller 1135 is used for receiving and processing various interrupt signals from the system components.

Mass storage may be provided by diskette 1142, CD ROM 1147, or hard drive 1152. Data and software may be exchanged with computer system 1100 via removable media such as diskette 1142 and CD ROM 1147. Diskette 1142 is insertable into diskette drive 1141 which is, in turn, connected to bus 1130 by a controller 1140. Similarly, CD ROM 1147 is insertable into CD ROM drive 1146 which is, in turn, connected to bus 1130 by controller 1145. Hard disk 1152 is part of a fixed disk drive 1151 which is connected to bus 1130 by controller 1150.

User input to computer system 100 may be provided by a number of devices. For example, a keyboard 1156 and mouse 1157 are connected to bus 1130 by controller 1155. An audio transducer 1196, which may act as both a microphone and a speaker, is connected to bus 1130 by audio controller 1197, as illustrated. It will be obvious to those reasonably skilled in the art that other input devices, such as a pen and/or tablet may be connected to bus 1130 with an appropriate controller and software, as required. DMA controller 1160 is provided for performing direct memory access to RAM 1110. A visual display is generated by video controller 1165 which controls video display 1170. Computer system 1100 also includes a communications adaptor 1190 which allows the system to be interconnected to a network such as a local area network (LAN), a wide area network (WAN), or the Internet, schematically illustrated by transmission medium 1191 and network 1195.

In the illustrative embodiment, computer system 1100 may include an Intel microprocessor such as the 80486DX-33 MHz, or faster, a 14.4 Kb communication modem or faster, and a sound card, as further described with reference to FIG. 12.

Operation of computer system 1100 is generally controlled and coordinated by operating system software, such as the OS/2® operating system, available from International Business Machines Corporation, Boca Raton, Fla., or Windows® DOS-based operating system available from Microsoft Corp., Redmond, Wash. The operating system controls allocation of system resources and performs tasks such as process scheduling, memory management, networking, and I/O services, among other things.

FIG. 12 illustrates schematically an audio sound card 1200 which may be used to implement audio controller 1197 of FIG. 11. Specifically, sound card 1200 may comprise, in the exemplary embodiment, an analog-to-digital (A/D) converter 1212, an input buffer 1216, a digital signal processor (DSP) 1222, ROM 1224, RAM 1226, an output buffer 1220, and an analog-to-digital (D/A) converter 1218, all of which may be interconnected over a bus 1210. Bus 1210 is in turn

coupled to a bus interface 1228 which, in turn, is coupled to bus controller 1125 of computer system 1100 of FIG. 11.

As illustrated in FIG. 12, A/D converter 1212 is coupled to audio transducer 1214 which is typically a microphone. Conversely, D/A converter 1218 is coupled to audio transducer 1230, typically a speaker. It will be obvious to those reasonably skilled in the art that audio transducers 1214 and 1230, may be combined into a single element which serves as both a transmitter and receiver of audio signal.

In operation, A/D converter 1212 samples the audio signals supplied to it by transducer 1214 and stores the digital samples in buffer 1216. The digital sampling occurs under control of a program typically stored in ROM 1224, or, alternatively, under the control of digital signal processor 1222. The digital samples stored in input buffer 1216 are forwarded periodically, typically when the buffer reaches near capacity, over bus 1210 to bus 1130 of FIG. 11, for further processing by computer system 1100. The device driver for audio sound card 1200 generates system interrupts which will cause the digital samples stored in input buffer 1216 to be retrieved for processing. In the exemplary embodiment, the digital samples are uncompressed as supplied to computer system 1100. However, compression of the digital samples may occur using DSP 1222 executing an appropriate compression algorithm, if desired.

Digital audio samples from computer system 1100 are also converted to analog signals by sound card 1200. The digital samples are supplied to bus 1210 and temporarily stored into output buffer 1220. The digital samples are then converted by D/A converter 1218 into an analog signals which are then supplied to audio transducer 1230, i.e., a speaker, or to further amplification and processing devices.

Sound card 1200 contemplated for use with the present invention may be implemented with any number of Windows compliant sound cards, such as the Sound Blaster sound card, commercially available from Creative Technologies Ltd., Singapore. Such Window compliant sound cards have a Windows compliant software interface allowing a standardized mechanism for software programs to operate the sound card device, such as Winsoc 1.1.

WebPhone Application

In the exemplary embodiment of the present invention, each of first processing unit 1012 and second processing unit 1022 of FIG. 10 are executing a software application capable of enabling point-to-point communication over network 1000, such as an Internet telephone application. One such application suitable for use with the present invention is the WebPhone Version 1.0 or higher, software, hereafter referred as the "WebPhone," commercially available from NetSpeak Corporation, Boca Raton, Fla. A description of the architecture and operation of the WebPhone is provided herein with reference to FIGS. 5-6, 13A-B and 14. An extensive detailed description of the architecture, application program interface, graphic user interface, and operation of the WebPhone can be found in copending U.S. patent application Ser. No. 08/719,554, entitled "Point-to-Point Computer Network Communication Utility Utilizing Dynamically Assigned Internet Protocol Addresses" by Mattaway et al. filed on an even date herewith and commonly assigned, the complete subject matter of which is incorporated herein by reference.

Referring to FIGS. 13A-B, schematic block diagrams of the WebPhone architecture are illustrated. The WebPhone is an end-user software application which enables users to send real-time audio data to other WebPhone users over the Internet or any public or private TCP/IP based computer networks. The WebPhone application and architecture may

be designed to run on any number of operating systems or computer architectures. In the illustrative embodiment, the WebPhone application is implemented as a Windows compatible application executable on an IBM PC architecture or a clone thereof.

Referring to FIG. 13A, the WebPhone 1300 comprises a set of object modules, written in a programming language such as C++, which work together in a concerted fashion to provide real-time, multitasking, network-based media transmission and reception. WebPhone 1300 comprises a graphic user interface (GUI) 1310, a user interface (UI) 1312, an event manager 1314, a media engine 1316, a database dynamic link library 1318, one or more audio compression/decompression (codecs) 1320, an audio manager 1324, a WebPhone application program interface (API) 1326, and a network interface 1322.

WebPhone GUI 1310 comprises the visual objects seen on a computer display by the user, as illustrated by the screen capture of FIG. 14 discussed hereinafter. WebPhone GUI 1310 serves only to display the artwork associated with the underlying objects of WebPhone UI 1312. WebPhone GUI 1310 may be implemented in a modular fashion distinct from the WebPhone UI for rapid portability. In this manner, other graphic user interface environments such as those compatible with the Macintosh, X-Windows or OS/2 operating systems, may be substituted via the Plug and Play protocol, as would be understood by those reasonably skilled in the arts.

The WebPhone UI 1312 objects maintain the state of the WebPhone GUI and provide feedback to the WebPhone GUI objects from events originating from either the user or the event manager 1314. When WebPhone changes a state that requires user notification, WebPhone UI objects notify associated WebPhone GUI objects to display the appropriate artwork to the user. WebPhone UI objects also interface with the database dynamic link library 1318 to maintain the WebPhone database information, e.g. configuration information, phone directory information, etc.

The WebPhone event manager 1314 processes all the events originating from the user, via WebPhone UI 1312, the media engine 1316, and WebPhone API 1326. Event manager 1314 may be implemented as a table-driven state machine that processes the above-identified events and performs the functions necessary to bring the WebPhone from one state to another. For example, event manager 1314 interacts with media engine 1316 to create, control and remove concurrently executing jobs managed by media engine 1316. Event manager 1314 also interfaces with the WebPhone API 1326 to provide communications with other WebPhones and connection servers, as described in more detail hereinafter. WebPhone database 1318 is a dynamic link library of tree-based subroutines that provide fast database access to the WebPhone configuration information, personal phone directory, etc.

WebPhone media engine 1316 manages the allocation of associated resources to provide a multitasking environment and controls the flow of real-time data streams, e.g., conversations, outgoing messages, etc., and non-real-time data streams, e.g., voice mail, graphic images, files, etc., to and from a user network connection. The objects representing tasks are created by event manager 1314, thereby freeing media engine 1316 to manage resource routing. Specifically, the media engine routes data streams from sources such as a microphone, file or network socket, to destinations such as speaker, destination file or other network socket. To perform such routing functions the media engine interfaces with the WebPhone API 1326 to control communication with other

processes, and further communicates with audio manager 1324 to communicate with the system input/output apparatus, such as sound card 1200 of FIG. 12. Media engine 1314 may be designed to employ heuristic methods to sense and efficiently utilize available bandwidth to achieve timely and accurate delivery of all data streams, both real-time and non-real-time.

Media engine 1316 further interacts with WebPhone codec 1320 to achieve compression and decompression of audio data streams. Codec 1320 provides coding of digital samples from the sound card 1200 of FIG. 12 into a compressed format more suitable for transmission over a computer network. Codec 1320 further provides decoding of a compressed signal prior to its submission to sound card 1200 for subsequent conversion to an audible analog signal. In the exemplary embodiment, WebPhone codec 1320 is implemented in a modular fashion so that codecs may be replaced and updated with newer, more efficient compression/decompression algorithms via the Plug and Play protocol. A codec suitable for use with the present invention is the True Speech codec, version 8.5, commercially available from the DSP Group, Inc., Santa Clara, Calif. The True Speech codec is an enhanced linear predictive coding algorithm, specifically designed to efficiently encode and decode human speech data. The True Speech codec samples the digital sample stream from sound card 1200, and, using a look-up table-based algorithm, tries to predict the value of the next data sample in the digital data stream based on the history of prior data sample values. The compressed data stream comprises a combination of identifiers of the predicted sample values, as well as error values used to correct the predictive values. Accordingly, the amount of digital data actually transmitted to represent the audio signal is significantly reduced in comparison to transmission of the actual data samples generated by sound card 1200. The True Speech codec provides temporal, frequency domain compression of the digital data representing the audio signal. Audio manager 1324 handles communication with the audio sound card 1200 and presents a common interface to media engine 1314. Audio manager 1324 interfaces with sound card 1200 through one or more application program interfaces. In the illustrative embodiment, audio manager 1324 utilizes low-level Microsoft Windows wave input/output routines to interface with MCI compliant sound cards. As with codecs 1320, audio manager 1324 may be implemented to adhere to the Plug and Play protocol so other compliant audio sound cards or circuits, such as those for the Apple Macintosh, commercially available from Apple Computer Company, Cupertino, Calif., or a Unix compatible sound card or circuit may interact with the audio manager 1324.

The WebPhone API 1326 enables the WebPhone to communicate with other WebPhones, connection and directory assistance servers, Internet gateway servers, credit processing servers, database access servers and other client processes implementing the WebPhone API. As illustrated in FIG. 13B, the WebPhone API utilizes sockets, i.e., a file handle or address indicating where data is to be sent, allowing WebPhone API enabled processes to reside on the same computer, on a local area network, on a wide area network, or over the Internet. A process 1328 communicates with the WebPhone API 1326 through a plurality of sockets 1322. The sockets 1322 are accessible by network 1330 through a number of protocols including Internet Protocol (IP) 1332, Transmission Control Protocol (TCP) 1334, Real-Time Protocol (RTP) 1336 and User Datagram Protocol (UDP) 1338. The WebPhone API provides remote command

control of WebPhones and servers via the TCP. WebPhone API **1326** transfers real-time and streamed audio via the UDP protocol and real-time audio and video data via the UDP and RTP protocols. The WebPhone API utilizes TCP to transfer data of different types, i.e., file, image, graphics, etc. as well as to transfer streamline video and other multimedia data types, such as Java developed by Sun Microsystems, Mountain View, Calif. In addition, the WebPhone API provides user definable commands and data types.

FIG. 14 illustrates the graphic display produced upon invoking the WebPhone application. Display **1400** is an alternative embodiment to that illustrated in FIGS. 5-6 with similar graphic elements, icons and display areas functioning as previously described with reference to FIGS. 5-6. WebPhone Global Server

Having described the architecture of the WebPhone software which enables the first and second processing units to establish point-to-point communication over a network, a discussion of the global connection/information server is appropriate.

Referring to FIG. 15A, a network diagram, similar to that shown in FIG. 10, is illustrated, including a schematic diagram of the global server **1500** and the various devices operatively coupling server **1500** to the Internet **1530**. A first processing unit executing the WebPhone application, hereafter referred to as WebPhone **1536**, is coupled to Internet **1530** through an Internet service provider **1532**. Similarly, a second processing unit executing the WebPhone application, referred to as WebPhone **1538**, is coupled to the Internet **1530** by an Internet service provider **1534**. Global server **1500** is coupled to Internet **1530** by an Internet service provider **1528**, a CSU/DSU **1526**, a router **1524**, and a fire wall server **1522**. In the illustrative embodiment, fire wall server **1522** and global server **1500** are connected through a local area network **1520**. Network **1520** may be implemented with an Ethernet or other suitable transport for TCP/IP communications. However, as will be obvious to those recently skilled in the arts, server **1500** may be connected directly to fire wall server **1522**.

In the illustrative embodiment, firewall server **1522** is a single firewall mechanism which protects unauthorized access from network **1530** into global server **1500**. Firewall server **1522** may be implemented on a work station, such as a SPARC 5 or SPARC 20 server from Sun Microsystems, executing a commercially available firewall software application such as Raptor, available from Raptor Systems. Essentially, the firewall server prevents unauthorized access into global server **1500** and thereby prevents destruction of any of the information contained therein by checking the source of requests for information to global server **1500**.

Router **1524** translates logical addresses among networked topologies and may be implemented with any number of commercial router devices such as the CISCO model 2501 router executing CISCO 11.0 software, both commercially available from CISCO Systems, Inc., San Jose, Calif.

CSU/DSU **1526** (Channel Send Unit/Data Send Unit) functions as a sophisticated modem, converting network data to high speed serial data for transfer over a T1 or T3 line. Such high speed data is connected to another CSU/DSU, typically at the telephone company over the T1 or T3 line. An apparatus suitable for use in implementing CSU/DSU **1526** in the present invention is the AT&T Paradigm by AT&T Laboratories, Murray Hill, N.J.

FIG. 15A further illustrates a logical schematic of global server **1500**. The server comprises a hardware platform **1508** on which an operating system **1510** executes. In the illustrative embodiment, hardware platform **1508** may comprise

any number of commercially available high end work stations such as a DEC Alpha 4100 System, commercially available from Digital Equipment Corporation, Maynard, Mass., or a SPARC 5 or a SPARC 20, both commercially available from Sun Micro Systems, Mountain View, Calif. Operating system **1510**, in the illustrative embodiment, may comprise the Unix, commercially available from Novell, Windows NT, commercially available from Microsoft Corporation, or Solaris, commercially available from Sun Microsystems, Inc. Executing on operating system **1510** are a number of processes including connection server **1512**, information server **1514**, database server **1518** and database **1516**.

#### Connection Server

Connection server **1512** provides a directory information service to WebPhone client processes currently on-line with respect to the computer network. Connection server **1512** behaves like a virtual machine within global server **1500** and interacts with database **1516** through database server **1518** and with network interface card **1540** through the WebPhone API. The basic function of connection server **1512** is to provide a one-to-one mapping between an identifier of a WebPhone client process, such as a E-mail address, and the current IP address, dynamic or fixed, associated with that WebPhone client process.

As described in further detail hereinafter, when a WebPhone client transmits a <CONNECT REQ> packet to global server **1500**, an E-mail address such as "Shane@netspeak.com" is provided to connection server **1512**. Connection server **1512** then compares the E-mail address with the values of the records contained in on-line table **1516B** and, if a match occurs with one of the records contained therein, transmits the value of the Internet Protocol address associated with that record to the requesting WebPhone client, i.e., a one-to-one matching between E-mail addresses and Internet Protocol addresses.

Referring to FIG. 16A, a flow chart illustrating the basic process steps used by connection server **1512** to implement a one-to-one mapping of E-mail addresses to Internet Protocol addresses in accordance with the present invention is illustrated. The coding of the process steps of the flowchart of FIG. 16A into instructions suitable to control global server **1500** will be understandable by those having ordinary skill in the art of programming. Connection server **1512** remains in an idle state until a <CONNECT REQ> packet is transmitted from a WebPhone client to global server **1500**, as illustrated by decisional block **1610** of FIG. 16A. Upon receipt of the packet, connection server **1512** extracts the E-mail address from the packet and supplies the E-mail address to database server **1518** which then communicates using the ODBC standard with database **1516** to perform a search of On-line Table **1516B**, as illustrated by process blocks **1612** and **1614**. Database **1516** performs a search of on-line Table **1516B** and supplies the current Internet Protocol address of the WebPhone client associated with the E-mail address to connection server **1512**, via database server **1518**. If a corresponding Internet Protocol address is found for the E-mail address contained in the query, connection server **1512** supplies the Internet protocol address to the requesting WebPhone client by transmitting a <CONNECT ACK> packet, as illustrated by decisional block **1616** and process block **1618**. If, however, there is no Internet Protocol address associated with the queried E-mail address or the WebPhone client is off line, connection server **1512** will send an <OFFLINE> packet to the WebPhone client, as illustrated by process block **1622**. Connection server **1512** will return to an idle state to await the receipt of another

<CONNECT REQ> packet, as illustrated by FIG. 16A. A description of the above described packets as well as a diagram illustrating the packet transfer sequence between a WebPhone client and global server 1500 can be found with reference to Tables 7-8 and FIG. 17A, respectively. Information Server

Information server 1514 provides an interface between requests from WebPhone client processes and database 1516. Information server 1514 includes code written to extract the search criteria from an <INFO REQ> packet and supply the search criteria to the database search engine of database 1516 using the ODBC standard. In particular, referring to FIG. 16B, a flow chart illustrating the basic process steps used by information server 1514 in performing information/directory service functions in accordance with the present invention is illustrated. The coding of the process steps of the flow chart into instructions suitable for execution by global server 1500 will be understood by those having ordinary skill in the art of programming. Information server 1514 remains idle until an <INFO REQ> packet is received from a WebPhone client process, as illustrated by decisional step 1630. Next, information server 1514 extracts the data elements defined within the <INFO REQ> packet and supplies them to database server 1518 which, in turn, forward them to database 1516, as represented by the process step 1634 and 1636. The search engine contained within database 1516 performs the search and supplies to information server 1514 all client records meeting the search criteria specified in the <INFO REQ> packet, or a message indicating that no records were found. Next, information server 1514 transmits a <INFO ACK> packet to the WebPhone client process indicating the number of records satisfying the search criteria, as indicated by process step 1638. The WebPhone client may wish to receive all records satisfying the search criteria, or, if the number is excessively large, may desire to further refine the search by transmitting a <INFO ABORT> packet to information server 1514 and defining new search parameters to be sent with a subsequent <INFO REQ> packet. If a <INFO ABORT> packet is received by information server 1514, the process will return to an idle state, as illustrated by decisional block 1640. If no <INFO ABORT> packet was received, information server 1514 will transmit one or more <INFO> packets to the requesting WebPhone client until all records have been received by the WebPhone client, as illustrated by process step 1642. Information server 1514 will return to an idle state awaiting another <INFO REQ> packet, as illustrated in FIG. 16B. A description of the packets comprising the WebPhone protocol is illustrated in Tables 7-8 and a diagram illustrating the packet transfer sequence defined in FIG. 17A-B.

Network interface card 1540 interfaces with connection server 1512, information 1514, and database server 1518 using the WebPhone API definition, as described herein, and the Windows Sockets 1.1 Protocol, or, in a Unix-based operating system, Berkeley Sockets Network API. Network interface card 1514 may comprise, in illustrative embodiment, an Ethernet card capable of transmitting data at rates of 100 Mbps or greater, such cards being commercially available through a number of different vendors.

The connection from CSU/DSU 1526 to ISP 1528 may comprise a T1 connection, i.e., a long-distance, digital, point-to-point communication circuit capable of transmitting a signal at 1.544 Mbps with 24 channels at 64 Kbps. Alternatively, a T3 connection may be used, i.e., a connection is similar to a T1 connection except it is capable of transmitting at 44.746 Mbps per second with up to 28 T1

channels. Other connections may be suitable, depending on specific requirements and availability.

#### Database

Database 1516 of global server 1500 may be implemented with any of a number of commercially available structured query language (SQL) database engines, such as Oracle 7.x, Informix, or Microsoft SQL server 6.x. The SQL database resides on a RAID 1 and RAID 5 mirrored disk array. As will be explained hereinafter, database 1516 interacts with control server 1512 and information server 1514 through database server 1518. In the illustrative embodiment, database 1516 comprises a Client table 1516A, an On-line table 1516B, a WebBoard table 1516C, a WebBoard configuration table 1516D and a WebBoard Source table 1516E.

Client table 1516A comprises a plurality of records, each of which may have the fields and corresponding data elements as described in Table 1. Each WebPhone user, hereinafter "client," has a separate record in table 1516A containing the information defining the client's profile of personal information. In Table 1, the "activated," "paid," and "published" fields are boolean yes/no fields. The "id" field comprises a unique ID sequence identifying a particular WebPhone client. The "activation date," "address change date," and "access date" fields are time references measured in seconds since 00:00 Coordinated Universal Time (UTC), Jan. 1, 1970. The "IPAddr" field represents the Internet protocol address of the WebPhone client and, if unknown, has a default value of 0.0.0.0. The database record containing a WebPhone client's profile, is defined upon first logging-on to global server 1500 and may be updated each time a WebPhone user's profile changes, as explained hereinafter.

The On-line table 1516B provides a dynamic list of those clients from 1516A who are currently On-line, as well as their current Internet protocol address. On-line Table 1516B comprises a plurality of records each of which may have the fields and data types illustrated in Table 2. The record entries of On-line table 1516B are used by connection server 1512 and information server 1514, as explained hereinafter, to provide a directory of those WebPhone client processes currently having on-line status with respect to the computer network.

The WebBoard™ is a virtual multimedia billboard which is transmitted as a series of multimedia data files to WebPhone client processes while the WebPhone application is activated. An extensive description of the WebBoard utility and its operation can be found in copending U.S. patent application Ser. No. 08/719,891 entitled Method and Apparatus for Distribution of Multimedia Data Over a Computer Network by Mattaway et al., commonly assigned, the subject matter of which is incorporated herein by reference.

A number of tables are associated with the WebBoard functionality including WebBoard table 1516C, a WebBoard configuration table 1516D, and a WebBoard source table 1516E. WebBoard table 1516C includes a plurality of records each describing a specific WebBoard and having the field and data types illustrated in Table 3. The "id" field of Table 3 provides a unique identification number for the WebBoard file. The "imageType" field defines the video format of the image such as JPEG, TIF, GIF, etc. The "audio" field defines the nature of the audio file, e.g. a .wav file or a MIDI file, while the "audioType" field defines the codec, if any, used to compress/decompress the audio file. The "hits" field defines the number of times the WebBoard has been selected by WebPhone clients, while the "hits profile" field defines the file name of the file identifying those WebPhone clients generating hits to the subject WebBoard.

The WebBoard configuration table **1516D** may have at least one record having the fields and data types illustrated in Table 4. The count field represents the number of WebBoard records currently in the table **1516C**.

The WebBoard source table **1516E** may comprise a plurality of records each having the fields and data types defined in Table 5. The "URL" field of Table 5 defines a data link in accordance with Uniform Resource Locator protocol to the home page or Web site of the source. In the illustrative embodiment, any entity, including vendors, advertisers, individuals or groups wishing to post information or having a Web site or home page may have a WebBoard displayable through the present invention.

#### Database Server

Database server **1518** serves as the interface between database **1516** and connection server **1512** and information server **1514**. Specifically, connection server **1512** and information server **1514** communicate with database engine **1518** through application program interfaces embedded in the code implementation of both the connection server and the information server. Database server **1518** communicates with database **1516**, in the illustrative embodiment, using the open database connectivity (ODBC) standard, developed by Microsoft Corporation, Redmond, Wash. Database server **1518** functions to supply structured database queries to database **1516** and to supply the results therefrom to connection server **1512** and information server **1514**. In the illustrative embodiment, database server **1518** may be implemented as a "virtual machine" executing on global server **1500**, or, alternatively, may be implemented on a separate computer system such as a DEC Alpha 4100 Workstation executing DEC Unix operating system, both available from Digital Equipment Corporation, Maynard, Mass. Database server **1518** communicates with network interface card **1518** using the WebPhone Application Program Interface described herein.

#### Global Server Network

In the illustrative embodiment, global server **1500** is implemented as a single server apparatus on which a plurality of "virtual machines" execute simultaneously. However, it will be obvious to those reasonably skilled in the art that a plurality of separate servers, one dedicated to each of connection server **1512**, information server **1514**, and database server **1518** may be interconnected to database **1516** and to each other using a local area network, to form a composite "virtual" global server, as illustrated by FIG. **15B**, the construction of the system illustrated in FIG. **15B** being within the knowledge of those reasonably skilled in the art in light of the descriptions contained herein.

It is further contemplated within the present invention that more than one global server **1500** may be utilized, as illustrated by FIG. **15C**. In this implementation, multiple global servers **1500A-D** are maintained for fault tolerant load sharing, each one performing the above-described connection server, information server and database server processes. Each of global servers **1500A-D** are connected to the Internet via a separate T1 or T3 connection to different Internet service providers, and are synchronized with each other via database server replication. In such an embodiment, multiple global servers may be located in close proximity or in geographically disparate locations. In such an embodiment, the WebPhone application is provided with the network address information of each global server **1500A-D**. In the event that any one of the global servers initially contacted is nonresponsive the WebPhone application will attempt connection to one or more of the remaining global servers to obtain directory and information services.

Further, in an implementation with multiple global servers, if the initially contacted global server is unable to accommodate a WebPhone client request, or, is not geographically convenient, the global server can provide the network address of another global server capable of servicing the WebPhone client's request or which is logically more convenient. This process may occur during the initial log-in of the WebPhone client process, as described with references to messages **1-5** of FIG. **17A**.

As previously described, if none of the global servers are available, the WebPhone application can rely on the secondary Internet Protocol technique in which a WebPhone client process sends its current dynamically assigned Internet Protocol address to a prospective WebPhone callee through an E-mail message, as described herein.

#### WebPhone Protocol

Prior to describing the interaction of the connection server **1512** and information server **1514** with WebPhone client processes, a description of the WebPhone protocol by which the WebPhone client processes and the global server **1500** communicate is appropriate. Tables 6-7 below illustrate the packet definitions of the packets comprising the WebPhone protocol (WPP) including the packet type, the direction and the data elements comprising each packet. In Tables 6-7 the symbol "→" indicates a packet transmitted by a WebPhone client process, while the "←" symbol indicates a packet transmitted by the global server. Tables 8-9 define the data elements described in Tables 6-7. In Tables 6-9, the terms "ULONG" and "UNSIGNED LONG" designate an unsigned long integer value, i.e., 32-bit integer value. Similarly, the terms "USHORT" and "UNSIGNED SHORT" designate an unsigned short integer value, i.e., 16-bit integer value. The term "CHAR" designates a single character, typically assuming a binary value of either 1 or 0. The term "VARCHAR(X)", where X is an integer, value symbolizes a variable length character string, with the number of characters indicated with the integer value. The term "UNSIGNED CHAR" designates an 8-bit character code, i.e., no sign bit. Finally, the term "variable" indicates a variable length data field.

FIG. **17A** illustrates a schematic block diagram of a packet transfer sequence between a pair of WebPhone client processes and the global server, in accordance with the present invention. Each WebPhone application, also referred to as a WebPhone client process, connects to global server **1500** upon start up to inform global server **1500** that the WebPhone client process is on-line and available to make and/or receive calls. Specifically, as illustrated in FIG. **17A**, WebPhone **1536** opens a socket to the global server **1500** and transmits an <ONLINE REQ> packet from WebPhone **1536** to Global server **1500**, as illustrated by message **1** and FIG. **17A**. The <ON LINE REQ> packet may have the format and data illustrated in Table 6, and additional Feature bits which define the functionality of the WebPhone application, as explained in greater detail hereinafter. In response, connection server **1512** and information server **1514** of global server **1500** use the information contained in the <ONLINE REQ> packet to update the status of database **1516**. In the event that the WebPhone client process is logging on for the first time, global server **1500** returns to the WebPhone **1536** a <USER INFO REQ> packet, as illustrated by message **2** of FIG. **17A**. The <USER INFO REQ> packet includes the elements as defined in Table 9. In response, WebPhone **1536** returns a <USER INFO> packet as illustrated by message **3** of FIG. **17A**. The <USER INFO> packet contains the data elements defined in Table 8. Connection server **1512** and information server **1514** of global



server **1500** utilize the data in the <USER INFO> packet to update database **1516**. Specifically, information server **1514** utilizes such data to create a record in client table **1516A** representing WebPhone **1536**. Next, global server **1500** transmits to WebPhone **1536** a <REGISTRATION> packet, as illustrated by message **4** of FIGS. **17A**. The <REGISTRATION> packet contains the data described in Table 7 plus Feature bits, as described hereinafter. The <REGISTRATION> packet returned to WebPhone **1536** enables certain functions within the WebPhone architecture based on predetermined criteria, for example, whether the user has paid for the product, or which version of the product the user possesses. Following the <REGISTRATION> packet, global server **1500** further transmits an <ONLINE ACK> packet, as illustrated by message **5** of FIG. **17A**. Prior to transmission of the <ONLINE ACK> packet, connection server **1514** updates database **1516**, specifically On-line table **1516B** to indicate that WebPhone **1536** is on-line with respect to the computer network. Upon receiving the <ONLINE ACK> packet, WebPhone **1536** closes the socket to global server **1500**.

In the event WebPhone **1536** had previously registered with global server **1500**, only messages **1** and **5** are required to establish WebPhone **1536** as being on-line. If WebPhone **1536** had new user information to supply to global server **1500**, then packet sequence illustrated by messages **3** and **4** would occur.

Although the packet sequence illustrated by messages **1-5** is described with reference to WebPhone **1536**, WebPhone **1538** interacts in a similar manner with global server **1500** to establish on-line status. No further interaction occurs between the respective WebPhone client processes and the global server unless the WebPhones require directory or search assistance about a prospective callee.

In one calling scenario, a WebPhone user knows the E-mail address of another WebPhone user to which he/she wishes to establish a point-to-point communication, however, the current dynamically assigned Internet protocol address of the callee is unknown to the caller. In this scenario, the user of WebPhone **1536** requests assistance from global server **1500** to obtain the current dynamically assigned Internet Protocol address of the prospective callee WebPhone. First, the user of WebPhone **1536** specifies the callee by entering all or part of the callee party's name or alias in the party name field area of the graphic user interface. If the party is not in the WebPhone user's local directory, the IP address or E-mail address of the callee WebPhone may be entered into the number field area of the graphic user interface, followed by activation of the send button or icon on the graphic user interface. As a result, WebPhone **1536** opens a socket to global server **1500** and transmits a <CONNECT REQ> packet having the format described in Table 6. Connection server **1512** of global server **1500** utilizes the value of the E-mail address specified in the <CONNECT REQ> packet to perform a one-to-one mapping in the on-line table **1516B** to determine the current Internet Protocol address of the indicated callee, as illustrated by the flowchart of FIG. **15A**. Once this mapping is performed, the server **1500** transmits to WebPhone **1536** a <CONNECT ACK> packet, as indicated by message **7A** of FIG. **17A**. The <CONNECT ACK> packet has the format and content as illustrated in Table 6 and includes the IP address of the callee as well as information such as an error code to indicate that no WebPhone application is associated with that callee. Alternatively, if the selected callee is off line, global server **1500** transmits to WebPhone **1536** an <OFF LINE> packet to indicate that the desired party is not

on-line, as illustrated by message **7B** of FIG. **17A**. Following the receipt of either a <CONNECT ACK> or an <OFF LINE> packet by WebPhone **1536**, the socket to global server **1500** opened by WebPhone **1536** is closed.

If the current Internet Protocol address of the callee was returned from global server **1500**, the packet transmission sequence illustrated between WebPhones **1536** and **1538** of FIG. **17A** transpires. Whether a calling WebPhone knows the Internet Protocol address of the callee WebPhone, as in the case of a fixed Internet Protocol address, or obtains the Internet Protocol address from global server **1500**, as previously described, the calling sequence to establish a call occurs as follows. WebPhone **1536** opens a socket to WebPhone **1538**. Next, WebPhone **1536** transmits to WebPhone **1538** a <CALL> packet as illustrated by message **8** of FIG. **16A**. The <CALL> packet has the format illustrated in Table 6 and may, optionally, include information identifying the compression/decompression (codec) used by the caller WebPhone. In response to the <CALL> packet, WebPhone **1538** may return with a number of different packets, as illustrated by messages **9A-D**. First, callee WebPhone **1538** may respond to caller WebPhone **1536** with a <REJECT> packet, as illustrated by message **9A**, indicating that the callee WebPhone does not wish to be disturbed, e.g. total call blocking, or, that the callee WebPhone does not wish to talk to caller WebPhone, e.g. party specific or group specific call blocking. In the event of party or group specific call blocking, the user information contained within the <CALL> packet of message **9A** is compared by the caller WebPhone application to a predefined list of WebPhone user information profiles which the callee does not wish to converse, such list having been predefined by the callee in the WebPhone user's personal directory, as explained hereinafter. Upon receiving the <REJECT> packet the caller WebPhone announces the result to the user and the socket to the callee WebPhone is closed.

Alternatively, callee WebPhone **1538** may return a <BUSY> packet, as illustrated by message **9B** of FIG. **17A**. The <BUSY> packet indicates that the callee WebPhone is currently utilizing all available lines within its WebPhone application.

A further possible response from callee WebPhone **1538** is to issue an <ANSWER MACH> packet, as illustrated by message **9C** of FIG. **17A**. The <ANSWER MACH> packet includes data indicating whether the machine is capable of receiving voice mail type messages, as described in greater detail in copending U.S. patent application Ser. No. 08/719, 898 entitled "Method and Apparatus for Providing Caller Identification Based Out-Going Messages in a Computer Telephony Environment," by Mattaway et al., commonly assigned and incorporated herein by reference.

The preferred response by callee WebPhone **1538** is to transmit a call acknowledge <CALL ACK> packet, as illustrated by message **9D** of FIG. **17A**. The <CALL ACK> packet has the data content illustrated in Table 6. Both the <CALL> and <CALL ACK> packets contain the information of the WebPhone users sending the packet. This information is useful by the recipient of the packet for a number of purposes. For example, the user information is displayed on the enunciator area of the WebPhone graphic display to identify the party placing the call. Second, the user may select such information and, using the drag and drop functionality of the WebPhone graphic user interface, add the user information to the callee WebPhone user's personal directory resident within his/her specific WebPhone application. In such a manner, both parties are completely identified to each other prior to commencing audio communi-

cations. The transmission of complete caller identification information with the <CALL> and <CALL ACK> symbols packets enables such functions as individual or group specific call blocking, party specific outgoing messages, visual caller identification, and party specific priority ringing and sound effects, as explained herein.

Following transmission of <CALL ACK> packet by callee WebPhone 1538, the callee WebPhone further transmits an <ANSWER> packet to caller WebPhone 1536, as illustrated by message 10 of FIG. 17A. Like the <BUSY> packet, the <ANSWER> packet is essentially empty, containing nothing more than a session ID number which is unique to the call. The socket previously opened by caller WebPhone 1536 over which the forgoing packets were transmitted remains open for the transmission of control information between caller WebPhone 1536 and callee WebPhone 1538. Such control information may comprise an <END> packet signaling the end of a call, a <HOLD> packet indicating that one of the parties to a call has placed the call "on hold" or other packets related to advance functionality of the WebPhone architecture. In addition, caller WebPhone 1536 opens a second socket to callee WebPhone 1538 over which the respective WebPhones may exchange <AUDIO> packets, as illustrated by messages 11A-B of FIG. 17A. The <AUDIO> packets have the data content illustrated in Table 6. The WebPhone application enables the parties to converse in real-time, telephone quality, encrypted audio communication over the Internet and other TCP/IP based networks. If both WebPhone client processes are utilized with full duplex sound cards, such as that illustrated in FIG. 12, the WebPhone users may transmit and receive audio packets simultaneously, similar to normal telephone conversation. However, if the WebPhone client processes are used with half duplex sound cards, a WebPhone user may only transmit or receive audio data simultaneously, similar to a speaker phone. Exchange of <AUDIO> packets continues until either the callee WebPhone or the caller WebPhone transmits an <END> packet, as illustrated by message 12 of FIG. 16A. Following the receipt of an end packet, the WebPhone client process will cease to accept subsequent audio packets.

Following either transmission or receipt of an <END> packet by the caller WebPhone, the socket opened by the caller WebPhone to the callee WebPhone over which real-time audio communication occurred is closed. Similarly, the previously opened socket over which control information was transmitted between the callee and caller WebPhones is likewise closed.

Referring now FIG. 17B, if a WebPhone caller seeks to determine whether a prospective WebPhone callee is connected to the computer network, but, has little information regarding the client process, information server 1514 may be utilized as described. The WebPhone user defines One or more of the first name, last name, company, city, state, or country values of the Query field contained within the <INFO REQ> packet sends the packet to the global server. WebPhone 1536 opens a socket to global server 1500 and forwards <INFO REQ> packet to global server 1500, as illustrated by message 1 of FIG. 17B. Information server 1514 extracts the values specified the query field of the <INFO REQ> packet and queries the database 1516, as previously described with reference to FIG. 16B. Global server 1500 then transmits a <INFO ACK> packet back to WebPhone 1536, as illustrated by message 2 of FIG. 17B. The <INFO ACK> packet has the format and data elements indicated in Table 7, including the number of parties satisfying the search criteria, specified in the <INFO REQ> packet. If the user of WebPhone 1536 wishes to receive the

number of parties satisfying the search criteria global server 1500 automatically transmits to WebPhone 1536 one or more <INFO> packets, as illustrated by messages 3A-C of FIG. 17B. The <INFO> packet has the format and data elements as described in Tables 6-7. At any time following transmission of the <INFO ACK> packet, WebPhone 1536 may transmit an <INFO ABORT> packet to either prevent transmission of any <INFO> packets or to stop transmission of any remaining packets, as illustrated by message 4 of FIG. 17B. The <INFO ABORT> packet has the format and data elements as described in Table 6-7.

Once the user receives the information contained within the <INFO> packets satisfying the search criteria, the user may store such information in his/her personal WebPhone directory by dragging and dropping the information from the annunciator area to the direction dialog box using the WebPhone GUI.

The methods and apparatus described herein provide computer users with a powerful protocol in which to directly establish real-time, point-to-point communications over computer networks directly without server required linking. The a directory server assists in furnishing the current dynamically assigned internet protocol address of other similarly equipped computer users or information about such users.

#### WebPhone Feature Dynamic Enablement Mechanism

A number of security features may be implemented with the WebPhone application to ensure that unauthorized users of the WebPhone product cannot use its functionality. For instance, a reduced functionality version of the WebPhone application may be made available free or for a nominal royalty, with enhanced features or functionality, such as multiple simultaneous lines of conversation, unlimited call duration, and call conferencing, available only to those who pay the required royalty for the product. To prevent people from tampering with or modifying the product in an unauthorized manner, a mechanism is provided to validate calls and callers made with a WebPhone application. The same mechanism may be utilized by the global server or the WebPhone user to dynamically define the specific features of the WebPhone client processes for each activation, as explained hereinafter.

As described previously, with reference to FIG. 17A, during the on-line sign-on process global server 1500 forwards to a WebPhone client process a <REGISTRATION> packet as illustrated by message 4 of FIG. 17A. The registration packet contains a set of feature bits, an encrypted E-mail address and a client ID, such data also comprising part of an individual WebPhone client record in the client table 1516A. In the illustrative embodiment, the feature bits comprise a number of bytes, which, depending on the binary value of each bit contained therein, define the functionality of a WebPhone application. In the exemplary embodiment, the feature bits may have the structure and definition illustrated in Table 10. The WebPhone application is designed with an architecture as previously described herein and as extensively described in co-pending U.S. patent application Ser. No. 08/721,316, entitled "GRAPHIC USER INTERFACE FOR INTERNET TELEPHONY APPLICATION" by Mattaway et al., filed on an even date herewith, the subject matter of which is incorporated herein by reference. A number of features of the WebPhone architecture may be dynamically enabled using the feature definition illustrated in Table 10. Specifically, depending on the binary value of bit 0 in the feature definition, the number of point-to-point communications which the WebPhone can participate in simultaneously, i.e. number of available lines, may be set to

one of two possible line numbers. The binary value of bit 1 in the feature definition determines whether the WebPhone is capable of performing calls of a fixed duration, e.g. up to 3 minutes, or of an unrestricted duration. The binary value of bit 2 of the feature definition determines whether the WebPhone is capable of generating a single outgoing voice-mail message, or, an unlimited number of outgoing voice-mail messages. The capability of the WebPhone application to perform outgoing voicemail messages is described in greater detail in copending U.S. patent application Ser. No. 08/719,898, entitled "METHOD AND APPARATUS FOR PROVIDING CALLER IDENTIFICATION BASED-OUTGOING MESSAGES IN A COMPUTER TELEPHONY ENVIRONMENT", by Mattaway et al., filed on an even date herewith, the subject matter of which is incorporated herein by reference.

The binary value of bit 3 of the feature definition determines whether the WebPhone client process has a limited number of entries in the personal directory associated with the WebPhone client process or an unlimited number of entries. An extensive description of the WebPhone personnel information directory can be found in copending U.S. patent application Ser. No. 08/718,911, entitled "Method and Apparatus for Providing Caller Identification Based Blocking in a Computer Telephony environment," by Mattaway et al., filed on an even date herewith, the subject matter of which is incorporated herein by reference. The binary value of bit 4 of the feature definition determines whether or not the WebBoard virtual multimedia billboard can be disabled or not. An extensive description of the WebBoard virtual multimedia billboard can be found in co-pending U.S. patent application Ser. No. 08/719,891, entitled "METHOD AND APPARATUS FOR DISTRIBUTION OF MULTIMEDIA DATA OVER A COMPUTER SYSTEM", filed on an even date herewith, the subject matter of which is incorporated herein by reference. The binary value of bit 5 of the feature definition determines whether audio conferencing, e.g., multiple parties communicating real-time audio on a single communication line or link, is enabled. The binary value of bit 6 of the feature definition determines whether video conferencing, e.g., multiple parties communication or real-time video on a single communication line or link, is enabled. The binary value of feature bit 7 determines whether or not the Whiteboard functionality, e.g., a text chat box which enables callers to converse in real-time audio data, as well as with text, is enabled. The binary value of bit 8 determines whether or not the WebPhone client process is capable of receiving off-line voicemail. Feature bits 9-27 are reserved for future functions. The value of feature bits 28-30 of the feature definition indicate the type of WebPhone, as illustrated in Table 10. The value of bit 31 of the feature definition is used to disable all WebPhone features if the value thereof is equal to one. It will be obvious to those reasonably skilled in the art that the exact arrangement of the feature bits, as illustrated in Table 10, as well as the functions to which the individual bits relate, is a choice of the system designer.

The callee WebPhone 1538 extracts the version, e.g., the capability, protocol and vendor information, and the E-mail address of caller WebPhone 1536 from the <CALL> packet forwarded to the callee WebPhone 1538, as described with reference to message 8 of FIG. 17A. Simultaneous with the exchange of <AUDIO> packets, as described with reference to messages 11A-B of FIG. 17A, callee WebPhone 1538 opens a separate network connection to global server 1500 and transmits a <CALLER OK> query packet, as illustrated by message 11C of FIG. 17A. The <CALLER OK> packet

contains the data elements illustrated in Table 7. Global server 1500 uses the information contained within the <CALLER OK> packet, particularly the emailAddr value as an index into the record of the callee WebPhone in Table 1516A. The extraction of the data from the <CALLER OK> packet is performed by connection server 1512 which, in turn, provides the information to database server 1518. Database server 1518 indexes the appropriate record within Table 1516A and returns the value of the "feature bits" field, as illustrated in Tables 1 and 10. Global server 1500 then transmits a <CALLER ACK> packet to callee WebPhone 1538, as illustrated by message 11D of FIG. 17A. The <CALLER ACK> packet contains the data elements illustrated in Table 7. Callee WebPhone 1538 extracts the feature bits from the <CALLER ACK> packet to define the functional parameters of the call between WebPhone's 1536 and 1538. For example, if caller WebPhone 1536 had been modified in an unauthorized manner to make calls of an unlimited duration, WebPhone 1538, upon receipt of the <CALLER ACK> packet from global server 1500 will terminate the communication with WebPhone 1536 after a limited duration, e.g., three minutes, by sending an <END> packet to WebPhone 1536. In a similar manner, callee WebPhone 1538 may prevent caller WebPhone 1536 from participating in conferences, either audio or video, or communicating in text chat mode if caller WebPhone 1536 is not authorized to execute such functions.

The above-described mechanism provides a powerful tool for preventing unauthorized use of the WebPhone features. Such a mechanism is useful not only for enforcing royalties but in an Intranet, e.g., business or corporate environment network, can be used to prevent employees from communicating in unauthorized manners.

In accordance with another aspect of the present invention, the dynamic feature enabling mechanism may be utilized to allow WebPhone users to selectively configure the functionality of the WebPhone client process each time the WebPhone process connects to the global server. In such an embodiment, the WebPhone application contains the appropriate dialog boxes in the graphic user interface to allow the user to select the desired functions of the WebPhone for a particular session, the design and function of such dialog boxes being within the scope of those recently skilled in the programming arts. In such an implementation, the <ONLINE REQ> packet, in addition to the data elements described in Table 6, contains the feature bit value as defined by the WebPhone user. The <ONLINE REQ> packet is then transmitted to global server 1500 in a manner similar to that described with reference to message 1 of FIG. 17A. Upon receipt of the packet, global server 1500, particularly connection server 1512, uses the information contained in the list <ONLINE REQ> packet to update the status of database 1516. In the event the WebPhone client process is logging on for the first time, global server 1500 and the WebPhone client process will interact in a manner similar to that previously described with regard to messages 2-4 of FIG. 17A.

It is contemplated within the present invention that a user may selectively define the desired features and pay a royalty in accordance with the selected features. For example, a user may wish to purchase only the minimum configuration of the WebPhone application initially and upgrade the functionality by payment for additional features at a subsequent time. In such instance, global server 1500 will compare the feature bits specified in the <ONLINE REQ> packet with those currently specified in the record of Table 1516A for that particular WebPhone client. If the user has not already

paid for such functionality global server 1500 may send a generic response packet to WebPhone 1536 indicating that additional charges are required to utilize the requested functions, such message typically including a telephone number to purchase the additional functionality. Once the user has purchased additional functionality, global server 1500 will have an updated record in database 1516 and will authorize the selected features upon receipt of the next <ONLINE REQ> packet from the WebPhone client, such authorization transmitted from global server 1500 to WebPhone 1536 with a <REGISTRATION> and <ONLINE ACK> packet, as previously described with reference to message 4 and 5 respectively of FIG. 17A.

In accordance with another aspect of the present invention, the ability for a WebPhone client process to request specific features upon connecting to the global server may dependent upon utilization of server resources. Specifically, WebPhone client 1536 submits a <ONLINE REQ> packet including value of feature bits selected by the user, in a manner similar to that previously described. In the event a WebPhone client process has requested features such as audio conferencing and/or video conferencing which, require special resources, such as a conference server (not illustrated), global server 1500 will determine the availability of the conference server before authorizing further WebPhone client process to perform either audio or video conferencing communications. Specifically, such a conference server will report to connection server 1512, typically at periodic intervals, of its current resource utilization level, i.e., its ability to handle additional conferencing tasks. If the utilization level exceeds a predetermined threshold, as determined by connection server 1512, connection server 1512 will monitor all <REGISTRATION> and <ONLINE ACK> packets being transmitted to WebPhone client processes to ensure that the specific feature bits, i.e., bits 5-6, relating to audio and/or video conferencing, are not enabled. In this manner the dedicated conference server will be given an opportunity to reduce utilization of system resources to a level below the predetermined threshold. Such a threshold level is the choice of the system designer and may typically be selected so that the quality of communications between respective WebPhone clients will comply with the product specifications. The determination that the threshold level has been exceeded may be determined by the conference server itself which then notifies connection server 1512 to disable the effected feature bits of all outgoing <REGISTRATION> and <ONLINE ACK> packets. The above-described invention provides a powerful tool with which to dynamically define the functions of not only communication applications but any software application which may be distributed by or communicate with a server apparatus over a computer network.

In yet another embodiment of the present invention, the definition of feature bits may be selectively defined by human operator intervention. In such an embodiment, a system administrator interacting with global server 1500 may selectively enable or disable, on a permanent or temporary basis, selected or all of the available features of WebPhone client processes. In this embodiment, the system administrator may instruct global server 1500, using a data structure and dialog interface within the scope of those reasonably skilled in the art, that all outgoing <ONLINE ACK> packets are to have predetermined feature bit values. Alternatively, the system operator may instruct global server 1500 that one or more records within database 1516A are to have predetermined feature bit values. In this manner, particularly for demonstration or promotional purposes, Web-

Phone client processes may enjoy temporary use of selected enhanced functionality, as defined by a system administrator. Conversely, the system administrator may disable the functionality of one or more WebPhone client processes. This ability is useful when a particular version or type of the WebPhone is no longer being supported. In this instance, the operator would designate to global server 1500 that all WebPhone client processes having a particular value of the version field, as defined in the record for each WebPhone client, as illustrated in Table 1, are to have all functions disabled, i.e., feature bit 31 equals 1, as illustrated in Table 10. This ability is also useful when responding to <ONLINE REQ> packet from WebPhone client processes using unauthorized copies of the WebPhone application.

In an alternate embodiment, the invention may be implemented as a computer program product for use with a computer system. Such implementation may comprise a series of computer instructions either fixed on a tangible medium, such as a computer readable media, e.g. diskette 1142, CD-ROM 1147, ROM 1115, or fixed disk 1152 of FIG. 11, or transmittable to a computer system, via a modem or other interface device, such as communications adapter 1190 connected to the network 1195 over a medium 1191. Medium 1191 can be either a tangible medium, including but not limited to optical or analog communications lines, or may be implemented with wireless techniques, including but not limited to microwave, infrared or other transmission techniques. The series of computer instructions embodies all or part of the functionality previously described herein with respect to the invention. Those skilled in the art will appreciate that such computer instructions can be written in a number of programming languages for use with many computer architectures or operating systems. Further, such instructions may be stored using any memory technology, present or future, including, but not limited to, semiconductor, magnetic, optical or other memory devices, or transmitted using any communications technology, present or future, including but not limited to optical, infrared, microwave, or other transmission technologies. It is contemplated that such a computer program product may be distributed as a removable media with accompanying printed or electronic documentation, e.g., shrink wrapped software, preloaded with a computer system, e.g., on system ROM or fixed disk, or distributed from a server or electronic bulletin board over a network, e.g., the Internet or World Wide Web.

Although various exemplary embodiments of the invention have been disclosed, it will be apparent to those skill in the art that various changes and modifications can be made which will achieve some of the advantages of the invention without departing from the spirit and scope of the invention. These and other obvious modifications are intended to be covered by the appended claims.

TABLE 1

Client Table		
Field	Data Type	Comments
id	ulong	Unique ID Sequence
activated	char	0 = NO, 1 = YES
activationDate	ulong	Secs since 00:00 UTC Jan 1, 1970
version capability	ushort	Version of the Webphone
version protocol	ushort	
version vendor	ushort	
paid	char	0 = NO, 1 = YES

TABLE 1-continued

Client Table		
Field	Data Type	Comments
prePaidCode	varchar(16)	
firstName	varchar(10)	
lastName	varchar(25)	
alias	varchar(20)	
emailAddr	varchar(90)	
IPAddr	varchar(80)	0.0.0.0 if not known
street	varchar(50)	
apt	varchar(5)	
city	varchar(20)	
state	varchar(20)	
country	varchar(20)	
postalCode	varchar(20)	
phone	varchar(25)	
fax	varchar(25)	
feature bits	ulong	WebPhone Feature Definitions
company	varchar(25)	Company Name
addrChanges	char	No. of address changes
addrChangeDate	ulong	Secs since 00:00 UTC
publish	char	0 = NO, 1 = YES
accessDate	ulong	Secs since 00:00 UTC
accessCount	ulong	# of log ons
callCount	ulong	# of outbound calls
social security number	ulong	optional
age	ushort	optional
occupation code	ushort	optional
interest codes	ushort	optional
household income range	ushort	optional

TABLE 2

Online Table		
Field	Data Type	Comments
emailAddr	varchar(90)	
IPAddr	varchar(80)	
flags	char	
onlineDate	ulong	Secs since 00:00 UTC

TABLE 3

WebBoard Table		
Field	Data Type	Comments
id	ulong	Unique ID Sequence
image	varchar(255)	Filename of image file
imageType	char	.GIF = 0, JPG = 1, RLE = 3
audio	varchar(255)	Filename of TSP encoded WAV file
audioType	char	GSM = 0, TRUESPEECH = 1
hits	ulong	Number of accrued hits
hitsprofile	varchar(8)	Filename of Demographics
version	ulong	version of WebBoard
URL	varchar (255)	home page url

TABLE 4

Webboard Config Table		
Field	Data Type	Comments
count	ulong	Number of WebBoards

TABLE 5

Source Table		
Field	Data Type	Comments
id	ulong	Unique ID Sequence
weboardID	ulong	Link to WebBoard record
name	varchar(50)	Company's name
url	varchar(80)	URL to Home Page
street	varchar(50)	
apt	varchar(5)	
city	varchar(20)	
state	varchar(20)	
country	varchar(20)	
postalCode	varchar(20)	
phone	varchar(25)	
fax	varchar(25)	
contact	varchar(35)	Name of contact

TABLE 6

WebPhone Protocol (WPP) Packet Definitions			
Packet	Packet Type	Direction	Data
Invalid	WPP_INVALID	← →	WPP_INVALID
Online Req	WPP_ONLINEREQ	→	WPP_ONLINEREQ, sid, version, emailAddr, IPAddr, onlineState, feature bits
OnlineACK	WPP_ONLINEACK	←	WPP_ONLINEACK, sid, onlineStatus, feature bits
Offline	WPP_OFFLINE	← →	WPP_OFFLINE, sid
Hello	WPP_HELLO	← →	WPP_HELLO, sid, version
Connect Req	WPP_CONNECTREQ	→	WPP_CONNECTREQ, sid, version, callType, partyEmailAddr, emailAddr, IPAddr, connectState
Connect ACK	WPP_CONNECTACK	← →	WPP_CONNECTACK sid, connectStatus, partyIPAddr
Call	WPP_CALL	← →	WPP_CALL sid version emailAddr, IPAddr, userInfo
CallACK	WPP_CALLACK	← →	WPP_CALLACK sid, version, emailAddr, IpAddr, userInfo
CnfCall	WPP_CNFCALL	← →	WPP_CNFCALL, sid, version, emailAddr, IPAddr, userInfo

TABLE 6-continued

WebPhone Protocol (WPP) Packet Definitions			
Packet	Packet Type	Direction	Data
CnfCallACK	WPP_CNFCALLACK	← →	WPP_CNFCALLACK, sid, version
Answer	WPP_ANSWER	← →	WPP_ANSWER, sid
Busy	WPP_BUSY	← →	WPP_BUSY, sid
AnsMachine	WPP_ANSMACH	← →	WPP_ANSMACH, sid, state
End	WPP_END	← →	WPP_END, sid
Hold	WPP_HOLD	← →	WPP_HOLD, SID, (ON/OFF)
Reject	WPP_REJECT	← →	WPP_REJECT, sid
Camp	WPP_CAMP	← →	WPP_CAMP, sid
CampACK	WPP_CAMPACK	← →	WPP_CAMPACK, sid
Audio	WPP_AUDIO	← →	WPP_AUDIO, sid, audioType, silence, length, audioData
Pulse	WPP_PULSE	→	WPP_PULSE, sid
Adjpulse	WPP_PULSE	←	WPP_ADJPULSE, sid, adjPulse
Vmail	WPP_VMAIL	← →	WPP_VMAIL, sid, audioType, silence, length, audioData
VmailEnd	WPP_VMAILEND	← →	WPP_VMAILEND, sid
OgmEnd	WPP_OGMEND	← →	WPP_OGMEND, sid
CnfAdd	WPP_CNFAADD	← →	WPP_CNFAADD, sid, partyEmailAddr, partyIPAddr, partInfo
CnfDrop	WPP_CNFDROP	← →	WPP_CNFDROP, sid
FileXmtReq	WPP_FILEXMTREQ	← →	WPP_FILEXMTREQ, sid, fileType, fileName, fileSize

TABLE 7

WebPhone Protocol (WPP) Packet Definitions			
Packet	Packet Type	Direction	Data
FileXmtAck	WPP_FILEXMTACK	← →	WPP_FILEXMTACK, sid
File	WPP_FILE	← →	WPP_FILE, sid, length, fileData
FileXmtEnd	WPP_FILEXMTEND	← →	WPP_FILEXMTEND, sid
FileXmtAbort	WPP_FILEXMTABORT	← →	WPP_FILEXMTABORT, sid
InfoReq	WPP_INFOREQ	→	WPP_INFOREQ, sid, query
InfoACK	WPP_INFOACK	←	WPP_INFOACK, sid, nparties
Info	WPP_INFO	←	WPP_INFO, sid, partyInfo
InfoAbort	WPP_INFOABORT	→	WPP_INFOABORT, sid
UserInfoReq	WPP_USRINFOREQ	←	WPP_USRINFOREQ, sid
UserInfo	WPP_USRINFO	→	WPP_USRINFO, sid, version, userInfo
WBImageStart	WPP_WBIMAGESTART	←	WPP_WBIMAGESTART, sid, fileSize, imageType, url
WBImage	WPP_WBIMAGE	←	WPP_WBIMAGE, sid, length, imageData
WBImageEnd	WPP_WBIMAGEEND	←	WPP_WBIMAGEEND, sid
WBAudioStart	WPP_WBAUDIOSTART	←	WPP_WBAUDIOSTART, sid, fileSize, audioType
WBAudio	WPP_WBAUDIO	←	WPP_WBAUDIO, sid, length, audioData
WBAudioEnd	WPP_WBAUDIOEND	←	WPP_WBAUDIOEND, sid
Registration	WPP_REG	←	WPP_REG, sid, feature bits, EEMMAILAddr, customer id
Audio Start	WPP_AUDIO START	← →	WPP_AUDIO START, sid
Audio End	WPP_AUDIO END	← →	WPP_AUDIO END, sid
Caller OK	WPP_CALLEROK	→	WPP_CALLEROK, sid, version, emailAddr, feature bits
CallerACK	WPP_CALLERACK	←	WPP_CALLERACK, sid, callerStatus, feature bits
Key Pad	WPP_KEYPAD	←	WPP_KEYPAD, sid (ON/OFF)
Key	WPP_KEY	→	WPP_KEY, sid, ascii character
WBLIST	WPP_WBLIST	←	WPP_WBLIST, sid, list of WB IDs
WBLIST REQ	WPP_WBLISTREQ	→	WPP_WBLISTREQ, sid
WB REQ	WPP_WEBBOARDREQ	→	WPP_WEBBOARDREQ, sid, WBid, Client id
WB HIT	WPP_WEBBOARDHIT	→	WPP_WWBOARDHIT, sid, WB id, Client id
ANS FULL	WPP_ANS FULL	→	WPP_ANS FULL, sid

TABLE 8

WebPhone Protocol (WPP) Packet Data Definitions		
Element	Data Type	Comment
WPP_*	unsigned char	WPP message identifier
sid	unsigned long	session id unique per call
version	unsigned(3)	version of the webphone (capability, protocol, vendor)
emailAddr	varchar(90)	email address of caller
IPAddr	varchar(80)	IP Address
onlineState	unsigned char	bit 0 (ACTIVE/INACTIVE) bit 1 (Merchant Phone) bit 2 (Connection Server) bit 3 (webboard disabled) bit 4 Not Used bit 5 Not Used bit 6 Not Used bit 7 Not Used
call Type	unsigned char	call type 0: EMAIL/1:IPCALL
partyEmailAddr	varchar(90)	email address of person to call
connectStatus	unsigned char	0:NO WEBPHONE 1:ONLINE 2:OFFLINE 3:RECONNECT 4:PERM_RECONNECT
partyIPAddr	varchar(80)	IP Address of person to call
userInfo	varchar(120)	firstName, LastName, alias, emailAddr, street, apt, city, state, country, postalCode, phone, fax, company
audioType	unsigned char	audio compress type 0:GSM 1:TRUESPEECH

TABLE 9

WebPhone Protocol (WPP) Packet Data Definitions		
Element	Data Type	Comment
length	unsigned short	length of audio or data in bytes
audioData	512 Bytes	compressed audio data
feature bits	unsigned long	WebPhone feature definition
fileType	unsigned char	file type 0:DATA 1:EMAIL 2:TEXT 3:BINARY
fileName	varchar(13)	name of file to be transmitted.
fileSize	unsigned long	size of file to be transmitted in bytes
fileData	variable	file data
query	varchar(120)	firstName, lastName, company, city, state, country
nparties	unsigned long	number of parties or query records being sent
size	unsigned long	size of file (IMAGE or AUDIO) to be sent
imageType	unsigned char	image type 0:GIF 1:JPG
imageData	512 Bytes	image data
eemailAddr	varchar(90)	encrypted email Address
onlineStatus	unsigned char	0 OK -1 Error
callerStatus	unsigned char	0 is unpaid 1 if paid
onlineState	unsigned char	bit 0 webboard disabled bit 1 Not Used bit 2 Not Used bit 3 Not Used bit 4 Not Used bit 5 Not Used bit 6 Not Used bit 7 Not Used

TABLE 9-continued

WebPhone Protocol (WPP) Packet Data Definitions		
Element	Data Type	Comment
WBid	unsigned long	link to WebBoard record
adjpulse	unsigned long	timer offset in secs

TABLE 10	
Feature Definition	
feature bit 0	
15	0 = 1 line bit 1 0 = Limited Call Time bit 2 0 = Limited VMail OGM bit 3 0 = Limited Directoxy Entries bit 4 0 = Webboard Not Disabled bit 5 0 = Conferencing(audio) Disabled bit 6 0 = Conferencing(video) Disabled bit 7 0 = Whiteboard Disabled bit 8 0 = Offline voicemail Disabled bit 9-27 Reserved bit 28-30 Type of Phone
25	1 = 4 lines 1 = Unrestricted Call Time 1 = Unlimited Vmail OGM 1 = Unlimited Dir Entries 1 = Allowed to Disable 1 = Conferencing Enabled 1 = Conferencing Enabled 1 = Whiteboard Enabled 1 = Offline voicemail Enabled
30	0 - Normal webphone 1 - Agent 2 - Business webphone 3 - Gateway 4 - ACD 5-7 reserved bit 31 1 = Disable all WebPhone features

TABLE 11

Offset	Name	Size	Description
35	Reserved		Reserved
+1	SessionID	4	Unique value for duration of this connection
+5	Version	6	WebPhone version and distributor stamp
+11	Codec	1	Audio compression algorithm selected
40	FirstName	10	Given name, middle initial
+12	LastName	25	Surname
+22	Alias	20	Nickname
+47	EmailAddr	90	Caller's electronic mail address
+67	IpAddr	80	Caller's WebPhone's Internet address
+157	Street	50	Street address of user
+237	Apt	20	Apartment or suite number
45	City	20	City name
+307	State	20	State or province
+327	Country	20	Country name
+347	ZipCode	20	Zip or postal code
+367	Phone	25	Telephone number
+387	Fax	25	Facsimile telephone number
50	Company	25	Employer or organization name
+412	File Name	25	Name of file
+437	Action Code	25	Action descriptor
+487	File Type	10	File type descriptor
+512	Status	25	Status of WebPhone utility
+537			
+547			

What is claimed is:

1. In a server apparatus operatively coupled to one or more client telephony processes over a computer network, selected of the client telephony processes capable of establishing real-time, point-to-point audio communications with other of said client telephony processes directly over the computer network and having the capacity to perform locally, within the client telephony process, a plurality of predefined functions related to such point-to-point communications, a method of dynamically defining which of said predefined functions a client telephony process is authorized to perform locally, within a client telephony process, the method comprising:

- A. receiving, over the computer network, a client process identifier from a requesting of said client telephony processes;
- B. determining from the client process identifier which of the plurality of predefined functions the identified client telephony process is authorized to perform locally, within the identified client telephony process; and
- C. transmitting to the requesting of said client telephony processes a function identifier associated with the identified client telephony process, the function identifier comprising a plurality of feature bits interpretable by the requesting client telephony process to determine which of the plurality of predefined functions the identified client telephony process is authorized to perform locally, within the identified client telephony process.
2. The method of claim 1 wherein B comprises:
- B.1 associating a function identifier with selected of a plurality of client information profiles, each selected information profile having an associated client process identifier.
3. The method of claim 2 wherein B further comprises:
- B.2 comparing the client process identifier with the selected plurality of client information profiles.
4. The method of claim 3 wherein B further comprises:
- B.3 generating a function identifier associated with one of the selected plurality of client information profiles, if a match occurs between the received client process identifier and one of the selected plurality of client information profiles.
5. The method of claim 1 wherein the value of the function identifier is dynamically defined by the server.
6. The method of claim 1 wherein the value of the function identifier is dynamically defined by the requesting client telephony process.
7. The method of claim 1 wherein the identified client telephony process and the requesting client telephony process are the same process.
8. The method of claim 1 wherein the identified client telephony process and the requesting client telephony process are not the same process.
9. The method of claim 8 wherein the identified client telephony process is a caller client process and the requesting client telephony process is a callee client process.
10. A computer program product for use with a server apparatus operatively coupled to one or more client telephony processes over a computer network, each client telephony process capable of establishing real-time, point-to-point audio communications with other of said client telephony processes directly over the computer network and capable of performing locally, within the client telephony process a plurality of predefined functions, the computer program product comprising a computer useable medium having embodied therein program code comprising:
- A. program code for receiving a client process identifier from a requesting client telephony process;
- B. program code, responsive to the client process identifier, for determining which of the plurality of functions the identified client telephony process is authorized to perform locally, within the identified client telephony process; and
- C. program code for transmitting to the requesting telephony client process a function identifier comprising a plurality of feature bits interpretable by the requesting client telephony process to define which of the plurality of predefined functions the identified client telephony

- process is authorized to perform locally, within the identified client telephony process.
11. The computer program product of claim 10 wherein the program code for determining comprises:
- program code for associating a function identifier with selected of a plurality of client information profiles.
12. The computer program product of claim 11 wherein the program code for determining further comprises:
- program code for comparing the client process identifier with the selected plurality of client information profiles.
13. The computer program product of claim 12 wherein the program code for determining further comprises:
- program code for generating a function identifier associated with one of the selected plurality of client information profiles, if a match occurs between the received client process identifier and one of the selected plurality of client information profiles.
14. The computer program product of claim 10 wherein the value of the function identifier is dynamically defined by the server.
15. The computer program product of claim 10 wherein the value of the function identifier is dynamically defined by the requesting client process.
16. The computer program product of claim 10 wherein the identified client process and the requesting client process are the same process.
17. The computer program product of claim 10 wherein the identified client process and the requesting client process are the not the same process.
18. The computer program product of claim 17 wherein the identified client process is a caller client process and the requesting client process is a callee client process.
19. A computer program product for use with a computer system residing at a node of a computer network and operatively coupled over a computer network to a server and one or more client telephony processes, the computer program product comprising a computer useable medium having embodied therein program code comprising:
- A. program code for establishing a real-time, point-to-point audio communication connection with another client telephony process over the computer network and for performing locally a plurality of predefined functions associated with the point-to-point audio communication;
- B. program code for forwarding to the server a client telephony process identifier;
- C. program code for receiving from the server a function identifier comprising a plurality of feature bits and defining which of the plurality of predefined functions the client telephony process is authorized to perform locally; and
- D. program code, responsive to the feature bits, for enabling local execution of selected of a plurality of the predefined functions, as determined by the feature bits.
20. The computer program product of claim 19 further comprising:
- E. program code for forwarding to the server a requested value for the function identifier.
21. A computer program product for use with a computer system coupled to a node of a computer network and operatively coupled over the computer network to a server, the computer program product comprising a computer usable medium having embodied therein program code comprising:
- program code for establishing a point-to-point communication connection with another computer system over



the computer network and for performing a plurality of predefined functions associated with the point-to-point communication connection;

program code, responsive to receipt of a client process identifier from a caller process, for forwarding the client process identifier to the server;

program code for receiving from the server a function identifier defining which of the plurality of predefined functions the caller client process is authorized to perform, the function identifier comprising a plurality of data variables;

program code, responsive to the function identifier associated with the identified caller process for interpreting the data values within the function identifier and for selectively enabling selected of the plurality of predefined functions to be performed by the caller client process.

22. A computer system for enabling point-to-point communications between one or more client processes operatively coupled over a computer network comprising:

first processor executing a client process in accordance with a predefined communication protocol, the client process capable of performing a plurality of predefined functions associated with point-to-point communication connections and operatively coupled to the computer network through an interface;

a second processor executing a client process in accordance with a predefined communication protocol, the client process capable of performing a plurality of predefined functions associated with point-to-point communication connections and operatively coupled to the computer network through an interface;

a server operatively coupled over the computer network to the first and second processors, the server maintaining in a memory thereof a list of client process identifiers and associated function identifiers, each of the function identifiers defining which of the plurality of predefined functions a client process is authorized to perform;

the second processor further comprising program logic responsive to the client process identifier of the first client process and for forwarding to the server the client process identifier of the first process and further responsive to a function identifier received from the server and associated with the first client process for interpreting data values contained within the function identifier and for selectively enabling selected of the predefined functions of the first client process in accordance therewith.

23. In a client application process executing at a node of a computer network and operatively coupled over the computer network to a server, the client application process capable of establishing point-to-point communications with other client application processes directly over the computer

network and capable of performing locally, within the client application process, a plurality of predefined functions related to such point-to-point communications, a method of dynamically defining which of said predefined functions a client application process is authorized to perform locally, the method comprising the steps of:

A. establishing a point-to-point communication connection with the server over the computer;

B. forwarding to the server a client process identifier;

C. receiving from the server a function identifier defining which of a plurality of predefined functions the client application process associated with the client process identifier is authorized to perform locally, within the identified client application process; and

D. enabling selected of the plurality of the predefined functions, as determined by the function identifier.

24. A computer data signal embodied in a carrier wave comprising:

A. program code for establishing a point-to-point communication connection between client application processes over a computer network and for performing locally, within a client application process, a plurality of predefined functions associated with the point-to-point communication;

B. program code for forwarding a client process identifier to a server coupled to the computer network;

C. program code for receiving from the server a function identifier defining which of the plurality of predefined functions a client application process associated with the client process identifier is authorized to perform locally within the identified client process; and

D. program code, responsive to the function identifier, for enabling selected of the plurality of the predefined functions, as determined by the function identifier.

25. A computer data signal embodied in a carrier wave comprising:

A. program code for receiving a client process identifier from a requesting client application process;

B. program code, responsive to the client process identifier, for determining which of a plurality of predefined functions the identified client application process is authorized to perform locally, within the identified client application process; and

C. program code for transmitting to the requesting client application process a function identifier comprising a plurality of data values interpretable by the requesting client application process to define which of the plurality of predefined functions the identified client application process is authorized to perform locally, within the identified client application process.

\* \* \* \* \*