



President's Message

HAPPY NEW YEAR

By, Reinhard Ludke

Every SEAONC committee has a board member contact that reviews the committee plans, activities, publications and funding that each committee has planned for this year. During the September board and committee meeting the committee co-chairs described their plans for 2008 -2009. The SEAONC Board has the responsibility to review the activities and reports prepared by SEAONC committees, and we make sure that SEAONC funds support the activities and members that volunteer their valuable time. All committees welcome your participation and involvement. Contact the committee chair if you see something that interests you. Committee leaders and plans for 2008 – 2009 are as follows:

Business Forum - Alan Burr - The Business Forum was formed over 10 years ago to provide a forum to educate owners/managers and discuss business operation issues. SEAONC is a member organization that focused on technical development and engineering education. The Business Forum has company members provides business, finance, human resources, marketing, and business operation advice and education. All SEAONC members are welcome to attend the monthly luncheon and program. Alan Burr has been an active business forum member for many years, and he will lead this committee in 2008.

Construction Quality Assurance - Art Dell - The committee has compiled data on local concrete aggregate sources. CQA will finalize the SEAONC web site and incorporate the aggregate project data and maintain a liaison with each supplier to keep data updated. The web site will present information on Bay Area aggregate sources for concrete as the

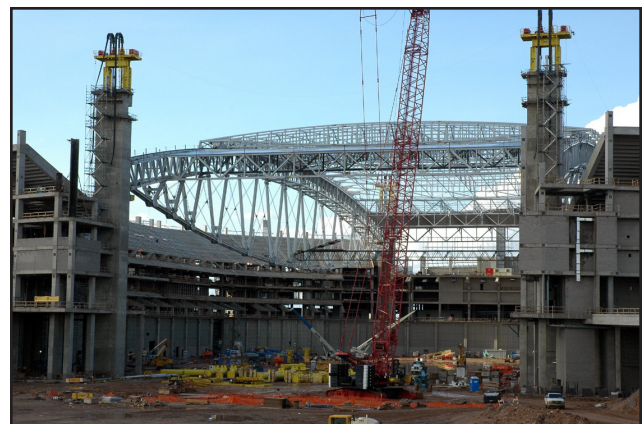
Continued on Page 2

October 7th Dinner Meeting

Structure in Motion - Design and Construction of Stadiums with Retractable Roofs and Playing Fields

by Larry Griffis, P.E.

SEAONC Program Chair Hamid Fatehi



Sports stadiums with retractable roofs and fields have ushered in a new era in the evolution of sports stadiums around the world. Gone are The Kingdome, Riverfront Stadium and Three Rivers Stadium. The venerable Astrodome sits idle, and the Superdome future is clouded at best. The high cost of new stadiums demands that they be more versatile and not just used on game days. The new stadiums need to accommodate more types of sporting and non-sporting events

Continued on Page 3

Meeting Notices

<p>SEAONC October Monthly Meeting Tuesday, October 7, 2008 The City Club 155 Sansome St. 10th Floor San Francisco Registration Deadline: 12:00 p.m. Thursday, October 2nd <i>(Details to the right, registration form on back of news)</i></p>	<p>SEAONC South Bay Meeting Wednesday, October 22, 2008 Michael's 2960 N. Shoreline Blvd Mountain View Registration Deadline: 12:00 p.m. Friday, October 17th <i>(Registration form on back)</i></p>	<p>SEAONC Business Forum Wednesday, October 15, 2008 The City Club 155 Sansome St. 9th Floor San Francisco Registration Deadline: 12:00 p.m. Friday, October 10th <i>(Details on page 7)</i></p>
---	---	---

In the October News:

President's Message.....	1
October Dinner Meeting	1
October South Bay Meeting.....	3
ATC-20 Training.....	3
Calmentor Program.....	4
COSMOS Tech. Session.....	4
October Business Forum.....	5
New & Pending Members.....	5
Job Forum.....	6

Continued from Page 1

companion to the 2007 concrete aggregate paper. Complete the Guidelines for Special Inspection in accordance with IBC 2006/CBC 2007. Continue to monitor implementation of the model Statement of Special Inspections. Work with local jurisdictions and DSA. Continue to work with the City of San Francisco on Special Inspection reforms. Complete the guideline document for special inspection of wood framing. There is still no appropriate certification process for special inspection of wood framing by the Inspection Agent or the Engineer. Working with the Structural Standards Committee, SEAOC QA/QC, and NCSEAs CAC subcommittee on Quality Assurance/Special, continue to work on changes to Chapter 17 of the IBC.

Continuing Education - Sonia Anderson, Masume Mansouri Dana The committee is busy planning three technical seminars and four mini-seminars. The fall seminar will clarify IBC code provisions and engineering of wood and cold formed steel structures. There are many changes in code provisions, and light gage steel framing is much more prevalent in multi-story multiple unit residential construction, so this seminar presents the latest engineering from local experts.

Disaster Emergency Services - Brian Dibarnaba The committee maintains the phone tree notification process and is modifying the contact system to an email-based procedure. The State OES has regulations for maintaining official OES certification status that includes training and updating certification. There is a fall 2008 DES OES training program scheduled at Santa Clara University.

Existing Buildings - Colin Blaney, Russell Berkowiz This committee is working closely with the City of Oakland on their recently adopted home transfer tax initiative. This ordinance provides new homeowners a financial incentive to strengthen critical weaknesses found in older homes which include the attachment of the house to the existing foundation, and the strengthening of wood cripple walls that rely only on non-conforming finishes for bracing. This assistance is included in an amendment of the building code and presentations to the general public covering fundamental retrofitting concepts.

A product of this work has been a substantial update to "Standard Plan A" which provides a prescriptive approach for the voluntary seismic strengthening of residential structures. SEAONC EBC revitalized this document and will begin adapting these provisions to a larger variety of homes later this year. The document can be found on the SEAONC ftp site. Phase 2 will include additional provisions to address long-narrow homes, and homes with cripple walls over 4' high. Supporting calculations will be updated to reflect the 2007 CBC and ASCE7-05 criteria.

Membership - Kevin Morton The committee works with the board to maintain membership levels and communicate with structural engineers on the value that SEAONC provides to the profession.

Program - Hamid Fatehi, Ibbi Al Mufti The committee produces all the monthly meeting programs. The commit-

tee welcomes suggestions and participation and started out the year with a great preview of the Beijing Olympics Birds Nest Stadium and the Water Cube structures. There will be more interesting programs from the committee this year.

Public Affairs - Lisa Cassidy The committee actively addresses issues affecting the relationship between the membership and the public. The Committee provides the Association's members with an opportunity for participation in community service by organizing the annual SEAONC Rebuilding Together and this fall will join with AIA East Bay for the Rebuilding Together block building project. The committee will present the High School Outreach program, developed by the Young Members' Forum, to over ten area high schools this year.

Seismology - Nicolas Rodrigues, Geoff Bomba The committee will answer code interpretation / technical questions - email the chair - nrodrigues@de-simone.com. A new subcommittee is preparing guidelines for Performance Based Design of Tall Buildings including the San Francisco Administrative Bulletin - Seismic Design of Tall Buildings using Non-Prescriptive Procedures. Provide practical guidance to the membership on Performance Based Design. Expand the Seismology Committee website into a premiere website dedicated to seismic code interpretation, code questions and answers, design examples, links to useful websites, and online forums/discussions. The light gage sub-committee will perform anchor bolt testing research to clarify appropriate application of ACI Appendix D to sill plates. Contact the committee chair to participate and continue the historic achievements of the SEAOC seismology committees.

Sustainable Design - Eric Kneer, Lindsey Maclise Liaison relationships with AIA (SF & Eastbay Chapters), USGBC-NCC, Cities of San Francisco, Oakland, Fremont, San Jose, ACI, AISC. Advocate building performance in USGBC's LEED Rating system and CA Green Building Code through presentations to client based organizations such as AIA, USGBC-NCC, BOMA, etc. Make presentations concerning sustainable design to other committees in the branches of SE, AEC and the community at large. Organize cross-disciplinary mini-seminar series on how SEs can better contribute to the sustainable design team as a whole. Add to SEAONC public access website for sustainable design resources.

Web Site - Darrick Hom The Website Committee maintains a functional website that provides pertinent and timely information to both SEAONC members and the general public. The Website committee works closely with other SEAONC committees to create content and capabilities that will enhance the efficiency of the organization, allowing for more efficient use of member resources. As with all websites, the SEAONC website is a complex structure that requires constant attention in order to remain current and useful. If you see a need or have a request contact Darrick.

Younger Members Forum - Philip Bastiao, Zach Satt. The YMF is one of the most active and ambitious committees. The activities for 2008-2009 include Professional Development - PE Exam training and study groups, SE Exam In-

Continued on Page 3

A Message from the President

Continued from Page 2

formation Session past test-takers sharing experience and giving advice, LEED Exam Information Session, and YMF Presents evening technical presentations geared towards younger members. Topics this year include talks from Disaster Emergency Services, Tall Building Design, Construction Practices and Quality Assurance, and ATC. Social - YMF networking opportunities for members include the Board and Principals Oktoberfest, Happy Hours and BBQ picnic, joint events with the Bay Area Young Architects (BAYA) and American Society of Civil Engineers (ASCE), A's vs. Giants Baseball Game, Rafting/Camping Trip, Ski Trip, and the YMF Softball Team. University Outreach - YMF members serve as SEAONC contact points for each local university. YMF arranges engineering office tours and coordinates with professors and the SEAONC office to facilitate students' attendance at a SEAONC dinner meeting: UC Berkeley, Stanford, SF State, San Jose State, Santa Clara University, Cal Poly San Luis Obispo. Public Outreach - YMF members tutor architects who are preparing to take the structural portion of the ARE exam. National Engineer's Week outreach to introduce Elementary and Junior High school students to the field of structural engineering. SEAONC Support & Publicity - Spotlight articles in SEAONC Newsletter that highlight the achievements of young engineers. YMF Email Newsletter sent out bi-weekly notifies members of YMF activities and programs. YMF members count the ballots of the SEAONC Board election in June. Advertise the SEAONC student scholarship to local universities and serve on the SEAONC scholarship committee.

October South Bay Dinner Meeting

Mark your calendar that the first South Bay Dinner Meeting of the new SEAONC Year is scheduled for October 22 at Michaels at Shoreline. At press time the Committee was still finalizing the topic and speaker so please watch your email or check the the SEAONC Website (www.seaonc.org) for more information.

ATC-20 Training Workshop Time to sign up!

The DES committee is planning the next ATC-20 Training Workshop for Saturday, November 1st, at Santa Clara University. The workshop will include classroom training on ATC-20 procedures, information on hazardous materials, what to expect on a deployment, as well as hands-on building evaluation through case studies. See the flyer in this month's newsletter for more information.

October Meeting Continued from Page 1

to be viable. They need to be both open air and enclosed for a wide range of venues. And that means stadiums with retractable roofs.

This seminar will address the structural engineering challenges that go into the design and construction of this new genre of building type – the retractable roof stadium and ballpark. Featured will be the new Reliant Stadium – home of the NFL Houston Texans and the Houston Livestock Show and Rodeo, the University of Phoenix Stadium – home of the NFL Arizona Cardinals and the new Cowboys Stadium in Irving, Texas – the new home of the Dallas Cowboys. These buildings are often hailed for their architectural design, but they are mostly structure and mechanization. In this building type, the structural engineer plays a major role in the success of the project.

With spans typically ranging from 600 to well over a 1000 feet or more, these "long span" roof structures with moving roofs and playing fields present a host of challenges ranging from the economics of spanning long distances with moving loads, the constructability aspects of putting the steel structure in place and the wind loading that such buildings receive depending on their roof configuration – open or closed. How are these enormous structures moved, what type of steel is used to keep the weight down, how are the steel truss connections made, how are the roofs erected and what role does this play in the structural engineering design, how are the roofs operated for potential thunderstorm and hurricane wind conditions, what happens if a mechanization failure occurs and how is this accommodated in the structural design, how are natural turf fields accommodated in the operation and maintenance of the building – all these types of questions will be addressed in this presentation.

About the Speaker:

Larry Griffis is President of the Structures Division and Senior Principal with Walter P. Moore and Associates Inc., a national structural/civil engineering firm headquartered in Houston, Texas. Mr. Griffis is responsible for overseeing the structural, diagnostic/forensic and parking services for thirteen offices around the country including San Francisco. He is a registered professional engineer in numerous states. He served as principal-in-charge of the stadiums featured in this presentation.

Mr. Griffis is very active in professional activities and is a frequent speaker at national and regional conferences. He has served as a member of the specification committees for both AISC and ACI. He is a member of the ASCE 7 Committee responsible for the ASCE/SEI 7 load standard and is a member and past Chairman of the Task Committee on Wind Loads for ASCE 7. He is past President and has served as a member of the board of directors for the Applied Technology Conference (ATC). He currently is a member and past Chairman of the ASCE Committee on Steel Buildings and is a member of the Code of Standard Practice Committee for AISC.

Mr. Griffis received the TR Higgins Award from AISC as well as the Lifetime Achievement Award. He was recently

Continued on Page 4

named a Fellow with the American Concrete Institute. In 2002 he was named a distinguished alumnus in Architectural and Civil Engineering from the University of Texas at Austin. He has received the Bill Schoeller Award from the Structural Engineers Association of Texas (SEAoT) and in 2003 was inducted into The National Academy of Engineering. He has twice been recognized by Engineering News Record Magazine as a Newsmaker in the field of structural engineering.

Calmentor Program

For more than a year, the California Department of Transportation (Caltrans), District 4, has worked collaboratively with the business community to offer the Calmentor program. The Program is focused on mentoring Architecture and Engineering (A&E) firms to facilitate opportunities through synergistic partnerships. The program brings together a diverse group of small businesses, transportation agencies, and prime consultants in A&E to focus on business strategies that support the Governor's Executive Order S-11-06. That intent of the order is to provide small and emerging businesses, both existing and new, with support, resources, and potential contracting opportunities with the State.

Calmentor continues to seek qualified small businesses, who might benefit from actively participating as either a mentor or protégé, with regional transportation/planning agencies serving as public agency participants/sponsors.

For more information about how to apply to Calmentor, contact Curtis Lindskog, Program Recruitment Leader at curtis.lindskog@shawgrp.com. To arrange a program presentation for your members, contact Sharon Kyle, Program Publicity Leader at skyle@hntb.com. For general program information, visit the District 4 Calmentor website at <http://www.dot.ca.gov/dist4/calmentor/>.

Join the SEAONC Business Forum

The SEAONC Business Forum was formed in 1994 as a venue for key employees of member firms to share ideas and interact on professional and business problems common to the practice of structural engineering. Different from other SEAONC committees, the Forum is financially self-sustaining through dues paid by member firms, which currently total about 45 structural engineering practices. All SEAONC members may attend the Forum's monthly luncheon meeting which features a speaker discussing business, management, legal, or marketing topics.

Cost for attending meetings is \$35 for SEAONC Members and \$25 for SEAONC Members from firms that have joined the Business Forum. Dues for firms with less than five employees are \$75, \$150 for firms with more than five employees. With a firm membership, all employees of the firm may attend meetings at the \$25 rate.

If your firm has yet to join the Business Forum, or if you would like further information, please contact the SEAONC Administrative Office at 415-974-5147

WALTER P MOORE Announces New San Francisco Office

WALTER P MOORE has opened a new office -- its 12th -- in San Francisco.

Leading the expansion as managing director is William A. Andrews, P.E., S.E. With over 20 years of broad experience throughout California and beyond. Andrews is a proven leader in providing structural engineering services for complex new buildings as well as seismic evaluation and upgrades of existing facilities including historic structures. He is a member of the Structural Engineers Association of Northern California (SEAONC) and recently served on its Board of Directors. He is also a member of the American Institute of Steel Construction (AISC) Code of Standard Practice Committee.

Also joining the new office is Rafael Sabelli, P.E., S.E. Sabelli has extensive experience in advanced applications of seismic design. His industry leadership has most recently been recognized by the AISC, which honored him as co-winner of the prestigious 2008 "T.R. Higgins Lectureship Award." He is a member of the AISC Seismic Provisions Task Committee, the American Society of Civil Engineers (ASCE) Seismic Subcommittee and the National Council of Structural Engineers Associations (NCSEA) Seismic Committee. Sabelli was also recently elected Vice President of the Structural Engineers Association of Northern California.

A national engineering and consulting firm, WALTER P MOORE creates solutions that help clients turn their ideas into structures and infrastructures that work. WALTER P MOORE is consistently recognized for extraordinary client service, engineering excellence and as a "best place to work." In 2006, the firm celebrated its 75th anniversary.

For further information contact Brenda Aschliman at 713.630.7304, or visit our Web site at www.walterpmoore.com

SEAONC Fall 2008 Seminar: Best Practices for Wood and Cold Formed Structures

Wednesdays, November 5 and 12, 2008

The cold formed portion of the seminar will provide general guidelines for the design and detailing of cold formed steel, including members, connections and lateral systems. Code changes from the 2001 CBC to the 2007 CBC and testing and research for a new system of corrugated metal shear walls will also be presented.

The wood portion of the seminar will give direction on prescriptive guidelines versus engineered systems, lateral systems, and changes in seismic and wind provisions as per the latest code. The proper use of proprietary continuous tie down and proprietary shear wall systems will also be discussed, as well as sustainability and cost effectiveness for wood design.

See insert inside for more information and to register!

Welcome New Members

Associate

Brian Katz, Skidmore, Owings & Merrill

Joanna Zhang, Skidmore, Owings & Merrill, LLP

Timothy Strickland, Structural Designer, Tipping Mar & Associates

Bryce Dickinson, Design Engineer, Rutherford & Chekene

Sanaz Ghahani, Structural Engineer II, Walker Parking Consultants

Greg Tolan, Assistant Engineer, Biggs Cardosa Associates

Will Spencer, Staff Engineer, Dasse Design, Inc.

Industry

Pat Havard, Owner, Principal Resource Group

Member

Ronald Campos, Principal, KLC Consulting Engineers & Architects

Tianyi Jia, Simpson Gumpertz & Heger

Richard Thow, Project Manager, TJC & Associates, Inc.

Nathan Wong, Staff Engineer, Murphy Burr Curry

Student

Keng Fong Cheong, Stanford University

Pending Members

Associate

Sabina Shiu, Forell/Elsesser Engineers, Inc

Man Hin Lee, Design Engineer Middlebrook and Louie

Robyn Chung, Design Engineer Rutherford & Chekene

Bryan Lin, Structural Engineering Assistant, Skidmore, Owings & Merrill

Rachel Severn, Staff Engineer Treadwell & Rollo

Bevan Jones, Senior Fire Engineer Holmes Culley

Industry

Joe Henson, Field Representative Fasten Master/OMG

Member

Steven Mintz, Technical Consultant Autodesk

Peter Todd, Design Engineer SunPower Corporation

Enrique Tuason, IT-EPC Systems Mgr. Bechtel Corporation

Brian Sjoberg, Senior Engineer ATI Architects and Engineers

Paul Krohn

Student

Radoslav Stanchev, San Francisco State University

Wes Thompson, Grad Student San Jose State University

October Business Forum Luncheon

Meeting Topic:
Real Examples of Insurance Claims Against Design Firms

DATE & TIME
Wednesday October 15, 2008
12:00 pm – 1:30 pm: lunch/Program

LOCATION
City Club, San Francisco
155 Sansome St. San Francisco

October's Business Forum meeting will be presented by Peter Molgaard Esq. attorney with Severson & Werson. Mr. Molgaard's presentation will be a Cautionary Tale, covering real examples of insurance claims against design firms which could have been avoided by better and more carefully written contracts. In today's market place we are often presented with contracts which contain onerous liability language. Mr. Molgaard will help us identify and improve these conditions and give us the tools to protect our interests against unrealistic and unfair contracts.

Peter Molgaard has a degree in architecture and over 15 years of experience as an attorney giving advice and counsel to design professionals and others in the construction industry. Mr. Molgaard is a Special Counsel in the firm's construction litigation and transactional practice group. He also focuses on contractual, risk management and litigation issues affecting the design and construction professional community.

If any SEAONC members have suggestions for subjects or speakers which they think would be interesting to the Business Forum, please contact Alan Burr at aburr@mbcse.com or 415.546.0431. We look forward to seeing you at the next meeting.

Cost: \$25 Business Forum Members
\$35 SEAONC Members
\$40 Other Attendees

Meal Selections: Lunch will be provided. If you prefer a vegetarian meal please specify this when you send in your registration.

RSVP: Contact the SEAONC office at office@seaonc.org or 415/974-5147 (RSVPs sent via e-mail will receive e-mail confirmations)

Registration Deadline: Friday, October 10th at 12:00pm

Oakland Seeks Engineers for Building Inventory

In September and October the City of Oakland and the Association of Bay Area Governments will conduct a sidewalk survey of residential buildings in Oakland, with emphasis on collecting and verifying building data needed to make earthquake safety policy decisions. SEAONC's Existing Buildings Committee encourages all SEAONC members, including students and young members, to participate. It's an opportunity for learning, networking, public service, and business development.

Dates have been tentatively set for Saturday, September 20th and Saturday, October 4th. More information and updates are available on the website, www.seaonc.org, or contact Marko Schotanus, mschotanus@ruthchek.com, who is coordinating SEAONC's involvement.

AKH Structural Engineers, Inc. (Formerly Ahearn, Knox & Hyde, Inc.) is seeking talented and motivated entry and mid-level Structural Designers with good communication skills and who are looking for a long-term career, to join our San Jose team. Our firm has over 35 years of diverse experience with challenging and innovative design projects that include commercial, municipal, educational, healthcare structures and custom residential in the SF Bay Area. Join our firm and experience all aspects and phases of the design and building process in a small, responsive, team-oriented engineering firm. Cultivate valuable management and engineering skills, enhance your professional growth and realize your own potential as a member of the successful AKH team. We are seeking full-time designers to help our firm enhance the built environment. For information please call 408/978-1970. Or send resumes to Tim Hyde at hyde@akhse.com.

For those interested in a change, **Applied Materials & Engineering, Inc. (AME)** offers an exciting opportunity in the field of construction materials. A leading materials engineering firm in the San Francisco Bay Area, we seek a licensed Civil Engineer with 5 years of experience to join our team. This opportunity offers overseeing special inspection projects, failure analysis and forensic materials testing. AME has an excellent compensation package, including medical and dental benefits, pension and profit sharing plans and education stipends. Send resume and cover letter of interest to Armen Tajirian via email at: armen@appmateng.com.

ARCHITECTURAL ENGINEERING. The Department of Architectural Engineering at Cal Poly, San Luis Obispo is seeking applications for full-time, academic year tenure track positions for the teaching of structural analysis, design, and construction of buildings. Starting date is September 14, 2009. Salary is commensurate with qualifications and experience. Candidates should also have a strong interest in the inter-relationship between structural engineering and architecture and construction, both in the academic context and in practice. Required qualifications for the position are either: a doctorate in structural engineering or a closely related field, along with evidence of scholarship related to building structures; or a master's degree in structural engineering, a structural engineering license (or equivalent with the ability to obtain an S.E. license within 3 years) and significant experience in professional practice (a minimum of 10 years of full-time practice.) In addition to teaching and service, the successful candidate is expected to be active in the scholarship of teaching, discovery, integration and/or application. For more information and to complete a required online faculty application, please visit WWW.CALPOLYJOBS.ORG and search for Requisition #101740. Review of applications will begin December 1, 2008. Applications received after this date may be considered. Cal Poly is strongly committed to achieving excellence through cultural diversity. The university actively encourages applications and nominations of all qualified individuals. EEO.

BLUESTONE Engineering, Inc. is seeking Project Engineers for full time employment. Excellent opportunity for profes-

sional growth. Very close to BART in Walnut Creek. Applicants with a minimum of 3 years experience in structural design and PE license preferred. Email cover letter and resume to lfowler@bluestoneeng.com, or fax to 925.932.7063.

Bureau Veritas has F/T and P/T opportunities for CA-registered Structural Engineers experienced in Power Plants, Water and Waste Water Treatment Plants, Industrial Code Compliance Plan Review Work in Sacramento on statewide projects. Bureau Veritas offers comprehensive Health and welfare benefits including a 401k Match. To Apply, please visit www.us.bureauveritas.com and click on the Career Page at the top of page, click on See All Open Positions, then on Engineering and submit your resume. We look forward to discussing our exciting Power & Energy projects you!

Cornerstone Structural Engineering Group has immediate openings for motivated staff and project engineers with 2-10 years of experience to work in our San Francisco office. Cornerstone provides excellent opportunities to work on a variety of projects and types of construction including educational, civic, and commercial buildings as well as bridges and infrastructure. Our goal is to foster a collaborative environment for all phases of structural design and construction. Visit our website at www.cseg.com. Fax resumes to 415-369-9101, attention: Tom Swayze or e-mail to: Careers@cseg.com

Creegan + D'Angelo Engineers – Are you ready to expand your Structural Engineering experience? Are you ready for a leadership position in a growing Infrastructure company? We are engineering, improving earthquake performance, and building Bridges, Railroads, Marine Structures, Water Storage and Distribution, Transportation and Public Works. We are hiring more talented engineers to support our business. TIME TO EXPAND YOUR HORIZON WITH US. Contact and resume to adravland@cdengineers.com

Crosby Group is looking for self-motivated project engineers and project managers with a minimum of 5 years of experience for our offices in Redwood City, Sacramento, and Colorado. The Crosby Group offers its engineers excellent growth opportunities with a solid career path, a highly collaborative environment, and exposure to a variety of large and challenging projects. At the Crosby Group, you will get the opportunity to participate on an exciting mix of new design-bid-build and design-build projects that average more than \$300 million annually. A sampling of current project types include: Convention Centers, Libraries, Community Colleges, Hotels, Elementary Schools, Justice Facilities, and Manufacturing Plants. The Crosby Group offers generous compensation packages including Full Health coverage, 401K, profit sharing, and generous educational stipends. If you are looking for the company with enough flexibility to suit your demanding life-style, please view our website at www.crosbygroup.com and send a cover letter and resume to resumes@crosbygroup.com. Both fulltime and part time positions will be considered.

DASSE Design seeks Project and Senior Proj-

ect Engineers for our SF or Oakland offices who want to step up to a rewarding career in the design of diverse and technically challenging building structures, while maintaining a healthy work-life balance. Our projects include new construction and retrofit, in education, health care, civic, mountain resort and life sciences buildings. Requirements are PE or SE license, BSCE (MSCE preferred), and 3-15+ years relevant design experience; DSA or OSHPD experience a plus. Positions require strong technical and communication skills, with a desire to grow and contribute in a professional environment. Our mentor and continuing education programs help you reach your potential. Email resume with cover letter to Carl Wilford, wilford@dasse.com. Visit us at www.dasse.com.

DESIMONE Consulting Engineers, a leading international structural engineering firm with a staff of over 275, has immediate openings in our growing San Francisco office for engineers at all levels. Presently, we are designing a diverse mix of interesting and technically challenging projects with a primary focus on new design, including residential projects, resorts, wineries, museums and high-rise buildings. Ideal candidates should have strong technical, management and communications skills. We offer a competitive benefits package, coupled with a dynamic work environment. Additional opportunities are available in our New York, Miami, New Haven, Las Vegas, Hong Kong and Abu Dhabi offices. Please send your resume to rpolivka@de-simone.com.

E.A. Bonelli + Associates, Inc., a medium size A & E firm seeks energetic, talented Structural Design Engineer for our office in Oakland. Applicants should have 3-5 years minimum experience and good communication skills. P.E. is preferred but not required. Proficiency with AutoCad is desired. We have immediate openings; salary commensurate with experience and benefits package. If you are interested in a rapidly growing firm that works throughout the country on challenging Light Industrial structures, please e-mail resume with cover letter to: openings@eabonelli.com or fax to 510-740-0160. Please include compensation requirements. Visit our website at www.eabonelli.com.

FORELL/ELSESSER ENGINEERS, INC., IS SEEKING TALENTED, REGISTERED ENGINEERS WITH 5 OR MORE YEARS OF EXPERIENCE to be members of our team. Are you looking for that "dream job" that will allow you to work in a dynamic downtown San Francisco office with a collaborative, fun group of engineers on some of the most challenging and exciting structural and seismic projects in California and around the world? If so, FORELL/ELSESSER ENGINEERS, INC., is eager to hear from you! Join an exciting and thoughtful team in a dynamic work environment that actively encourages and supports individual professional growth through ongoing education, training, and mentoring. Our firm offers a competitive compensation package that includes major medical, dental, vision, life/disability insurance, 401(k) match, profit sharing plan, incentive compensation plan and a flexible spending account. Find out more about FORELL/ELSESSER at www.forell.com Please contact Mason Walters at

(415) 837-0700 or send resumes to Mason Walters, FORELL/ELSESSER ENGINEERS, INC., 160 Pine Street, 6th Floor, San Francisco, CA 94111 or e-mail mason@forell.com

FULCRUM STRUCTURAL ENGINEERING has an opening for a full-time project engineer/manager to join our growing SOMA firm. Varied projects include challenging custom residential, commercial, public buildings and historical retrofit and restoration. Applicants must have 5-10 years of experience in structural detailing and preparing construction drawings for buildings, knowledge of CA/field observation and excellent communication skills. Professional engineering license preferred. Masters degree in Structural Engineering a plus. We are looking for someone who can run projects from start to finish as a project manager or ready to step up to a project manager position. Excellent salary and benefits package. Email resumes to careers@Fulcrumse.com or fax 415-543-0162

KPFF Consulting Engineers is seeking engineers at all levels for full time employment in our San Francisco and Walnut Creek offices. KPFF offers a supportive business environment unencumbered by bureaucracy that allows you to chart your own career development. Our culture supports personal and professional growth, education and training, and the freedom to pursue individual career goals. Applicants must be motivated and possess excellent communication skills. If you have at least 2 years of design experience, (PE license and an advanced degree in structural engineering preferred) and an interest in Structural Design, we want to hear from you. Send cover letter and resume to KPFF at jobapp@kpff-sf.com. EOE

MESITI-MILLER ENGINEERING, INC., an award-winning firm, has immediate openings for experienced structural design engineers. Responsibilities will include analysis, design, detailing and the preparation of calculations, drawings and specifications. Candidates must have a BS degree in Architectural, Civil or Structural engineering or closely related major. Experience in design of wood, concrete, masonry and steel structures using RISA, TEDDS, ENERCALC or similar is desirable. Candidates should have good command of the English language and be a licensed civil or structural engineer in CA or have the ability to obtain either license using comity. MME is a full service engineering firm focused on design of buildings, bridges and coastal projects. We also serve several niche markets in the solar industry and in forensic engineering. We offer fully paid medical, dental, life and disability insurance, paid vacation / personal time off, paid holidays and a 401k profit sharing plan with company matching contributions. We are located in a university town along the Pacific Ocean and enjoy nice beaches, great surf, rugged mountains and clean air. Interested candidates should mail a resume to Mark Mesiti-Miller at 224 Walnut Avenue, Suite B, Santa Cruz, CA 95060 or via email to hr@m-me.com For more information go to www.m-me.com . MME is an equal opportunity employer.

MURPHY BURR CURRY, INC is seek-

ing creative and talented engineers to join our San Francisco firm as full-time project engineers/managers. Projects include new construction and retrofit in residential, commercial, schools and historical retrofit and restoration. Applicants must have 4-10 years of experience in structural design and detailing and preparing construction drawings as well as excellent communication skills. PE or SE license preferred. Excellent salary and benefits package offered. Email resumes to scurry@mbcse.com or fax to 415-882-7257. Please visit us at www.mbcse.com

Is it time for a new **PARADIGM** in your life? At **PARADIGM Structural Engineers, Inc.**, we are looking for talented Project Managers, Senior Project Engineers, Project Engineers and Staff Engineers to join our dynamic and creative team. At **PARADIGM**, we work in a collaborative environment which focuses on developing you as a professional while producing some of the most innovative design solutions for our clients. Now is the time to take control of your future and make a "PARADIGM Shift!" Visit us at www.paradigmse.com and see how your qualifications and talents can help you become a contributing member at **PARADIGM**. Send resume and cover letter to jobs@paradigmse.com.

PEOPLES ASSOCIATES STRUCTURAL ENGINEERS INC. is a leading SE consulting firm in the South Bay. Now hiring engineers at all levels of experience. Mid-sized company specializes in challenging SE projects including commercial, industrial, residential, municipal, and bridges. Team-oriented atmosphere. Competitive salaries, benefits, profit sharing, retirement. BS req./MS pref. Resume & cover letter to: mail@pase.com fax: 408-957-9221 www.pase.com

RPSE Seeking Resumes for Structural Engineers: Rinne & Peterson Structural Engineers (RPSE) seeks and executes diverse, challenging projects. Are you customer-focused, detail-oriented, flexible, with great communication skills? Want growth opportunity, flexible hours, competitive salary, great benefits and superb working environment? Please send cover letter and resume to Human Resources, via fax at 650.428.2861, or e-mail HumanRes@rpse.com.

Rutherford & Chekene, recognized as a leader in structural and seismic engineering, has career opportunities in response to our considerable backlog of challenging projects. Positions involving innovative structural design and analysis are currently open to engineers and designers of all experience levels who want to become part of our dynamic and collaborative team. If you wish to apply for one of these positions or learn more about them, please contact Peter Revelli by phone at 415/568-4400 or e-mail at prevelli@ruthchek.com. Also visit our web site at www.ruthchek.com.

Skidmore, Owings & Merrill LLP (SOM), an award winning domestic and international Architecture and Engineering design firm invites bright and talented structural engineers and drafts persons to join their San Francisco office. SOM offers exciting career opportunities for professional growth and experience working in an interdisciplinary group practice on creative, innovative and challenging projects. Please contact Peter

Lee at peter.lee@som.com or by phone at 415-352-6878; also, hrsomsf@som.com attn: HR, Fax: 415-352-3888, mail: One Front Street, Suite 2400, San Francisco, CA 94111. Include letter of introduction with resume.

R & D Structural Engineer **Simpson Strong-Tie Company Inc.**, the world's largest manufacturer of structural connectors, is seeking energetic experienced structural engineers to join our creative engineering team. The positions are based at the Tyrell T. Gilb Research Laboratory, our state-of-the-art large scale structures laboratory in Stockton, California. Responsibilities include research, development and implementation of new structural building systems for light-framed and commercial construction. Qualified candidates shall have 2 or more years of building design experience. If you are looking to advance your career and are looking for a new challenge, please send your resume to rswires@strongtie.com.

Tipping Mar + Associates seeks an energetic, creative individual to join the staff of a dynamic, emerging structural engineering firm. If you have imagination in addition to technical expertise, and would enjoy working in early collaboration with architects and contractors to provide exceptional seismic and sustainable design, please send a resume and cover letter to Tipping Mar + associates, 1906 Shattuck Avenue, Berkeley, CA 94704; fax to 510-549-1912; or e-mail steve.tipping@tippingmar.com.

WANTED

REGISTERED ENGINEERS

Nishkian Menninger is seeking experienced registered engineers with 5 or more years experience in various types of structures. Our firm designs many kinds of structures including:

- office buildings
- high-rises
- schools
- residential buildings
- commercial buildings
- parking garages
- seismic rehabilitation

We offer a competitive salary with excellent benefits and 401(k).

Please send your resume and salary requirements to:

**1200 Folsom Street
San Francisco, Ca 94103
Inishkian@nishkian.com**

Nishkian Menninger is a market leading, structural and consulting engineering firm located in the SOMA district of San Francisco. We specialize in bringing innovative, cost effective solutions to suit our clients' needs.

NISHKIAN MENNINGER
CONSULTING AND STRUCTURAL
ENGINEERS SINCE 1919

He Knew He Wanted to Own a Business, He Didn't Know He'd Do It as an Engineer



At Degenkolb, he can. And so can you. We offer a clear path to leadership and ownership and are actively recruiting structural engineers. Join us and have the opportunity to follow your interests and develop clients for life. We encourage lifelong learning and support professional and community-based activities. Be part of a firm dedicated to innovative structural engineering and seismic safety worldwide. Ownership opportunities are provided to all employees in addition to open access to firmwide financial information. When you're not managing your practice and your business, you can relax in one of four company cabins. EOE.

Join Us!

Email your resume to: career@degenkolb.com

san francisco

los angeles

portland

oakland

san diego

seattle

SAP2000®

INTEGRATED SOFTWARE FOR
STRUCTURAL ANALYSIS & DESIGN

version **12**

**NEW RELEASE
NOW SHIPPING!**

SAP2000 v12 offers the most comprehensive, user-friendly, integrated and technically advanced software package for structural engineers. The latest version of SAP2000 continues to lead the industry in innovation—as it has for the past four decades—offering unparalleled capabilities and enhancements. Significant features of version 12 are highlighted below.

For more information visit www.csiberkeley.com

SAPFIRE™ – CSI's Analytical Engine

New multi-processor, multi-threading, 64 bit solvers
Providing unmatched performance speed and capacity!



New!
Multi-Processor Solvers

Model-Alive™ – Evaluate your model in real-time!

- Instantaneous re-analysis
- Instantaneous display updating

BrIM – Bridge Information Modeler

- Sophisticated wizard for rapid modeling of complex bridges
- Integrated design of concrete box girder bridges
- Comprehensive list of vehicles for influence lines and dynamic vehicle loading
- Single or dual sets of bearings at bents
- Continuous or discontinuous superstructure at bents

Nonlinear Staged Construction

- Construction scheduling Gantt charts
- Integrated with BrIM

Design Codes

- Latest international codes for steel and concrete
- AISC direct analysis method
- API open structure wind loading

Section Designer

- Arbitrary fiber section PMM interaction surfaces
- Concrete, steel encased, and steel sections
- Bridge sections, with/without prestressing tendons

Open Application Programming Interface (OAPI)

- SAP2000 accesses third-party OAPI tools as plug-ins
- Third-party developers can run SAP2000 from their applications

Automated, Predefined and Customized Report Generation

- Detailed reports with graphics, tables and text
- Comprehensive cover sheet with project and company information



COMPUTERS & STRUCTURES, INC.

Software for Structural and Earthquake Engineering

1995 University Avenue, Berkeley, CA USA 94704
tel: (510) 649-2200 fax: (510) 649-2299
email: info@csiberkeley.com web: www.csiberkeley.com

CSI is an ISO-9001 certified company.



upcoming events

OCT

7th

**SEAONC Dinner Meeting
City Club, San Francisco**

15th

**SEAONC Business Forum
City Club, San Francisco**

22nd

**SEAONC South Bay Meeting
Michael's at Shoreline, Mnt. View**

Get Your Newsletter Electronically

The SEAONC News is available electronically to all members. You can choose the electronic option at any time and help SEAONC save costs on printing and mailing. Please contact the SEAONC office at office@seaonc.org with "electronic subscription" in the subject line, and your name and contact info in the body of the email.

SEAONC - October 7th San Francisco & October 22nd South Bay Meeting

Monthly Program 10/7

5:30 pm Assembly
6:15 pm Dinner
7:15 pm Program
**City Club, San Francisco
155 Sansome St.
San Francisco, CA 94104**

NAME _____

COMPANY _____

ADDRESS _____

CITY _____ STATE _____ ZIP _____

PHONE _____ FAX _____

Monthly Program 10/22

5:30 pm Assembly
6:15 pm Dinner
7:15 pm Program
**Michael's, Mountain View
2960 N. Shoreline Blvd.
Mountain View, CA**

RSVP by Fax: 415/ 764-4915, e-mail: office@seaonc.org, Phone: 415/974-5147

San Francisco Registration Deadline: Noon, Thur. October 2nd

South Bay Registration Deadline: Noon, Friday, October 17th.

Register early, seating is limited. No cancellations after deadlines listed above. No-shows are still responsible for full attendance fee.

Cost - SF Monthly Meeting

	Pre-Registration	Late Reg.
SEAONC	<input type="checkbox"/> \$39	<input type="checkbox"/> \$44
Junior Mbr.	<input type="checkbox"/> \$33	<input type="checkbox"/> \$38
Student	<input type="checkbox"/> \$15	<input type="checkbox"/> \$15
Non-Mbr	<input type="checkbox"/> \$44	<input type="checkbox"/> \$49

Cost - South Bay Monthly Meeting

	Pre-Registration	Late Reg.
SEAONC	<input type="checkbox"/> \$28	<input type="checkbox"/> \$33
Junior Mbr.	<input type="checkbox"/> \$20	<input type="checkbox"/> \$25
Student	<input type="checkbox"/> \$15	<input type="checkbox"/> \$15
Non-Mbr	<input type="checkbox"/> \$33	<input type="checkbox"/> \$38

- Paying by check make payment to SEAONC.
- Paying online (monthly meeting only) go to:
http://www.seaonc.org/member/member_s/events/order_form.asp
- Paying by credit card provide the following:
(SEAONC Accepts VISA, MC, AMEX)

Credit Card#: _____

Expiration date: _____

Signature: _____

Registration