

# Burning Contest

---

## **Purpose**

To evaluate each contestant's ability to layout and burn a plate according to drawing specifications.

## **Eligibility**

The apprentice competing at the District Council level must be an apprentice during the year he or she is competing to go onto the National Competition. The apprentice may come from any year apprenticeship. He or she may only compete at the National level once.

## **Clothing Requirement**

Contestants must wear long pants, work boots (no tennis shoes), long sleeve shirt, hard hat, safety glasses with side shields, work gloves, personal protective equipment, and burning goggles (when burning). Prescription glasses can be used only if they are equipped with ANSI approved side shields.

## **Equipment and Materials**

The following equipment will be provided by the contest committee:

- Work gloves
- Personal protective equipment
- Torches, gauges and tips
- Chipping hammers
- Scribes or awls
- Soapstone
- Center punches
- Tapes or rules
- Combination squares
- Hammers
- Burning goggles
- Tip cleaners
- Compasses
- Clamps
- Vice grips
- Burning plate for each contestant:
  - A36 plate: 1 plate measuring 1/2" x 6" x 7"
  - Plates are to be pre-stamped with the contestant's number to avoid confusion
- Safety glasses with side shields
- Hard hats
- Ear protection

The contestant may provide the following:

- Work gloves
- Safety glasses with side shields
- Hard hat
- Burning goggles
- Tips for the Smith Equipment SC-229 Torch

### **Contest Guidelines**

These guidelines will be followed during this contest:

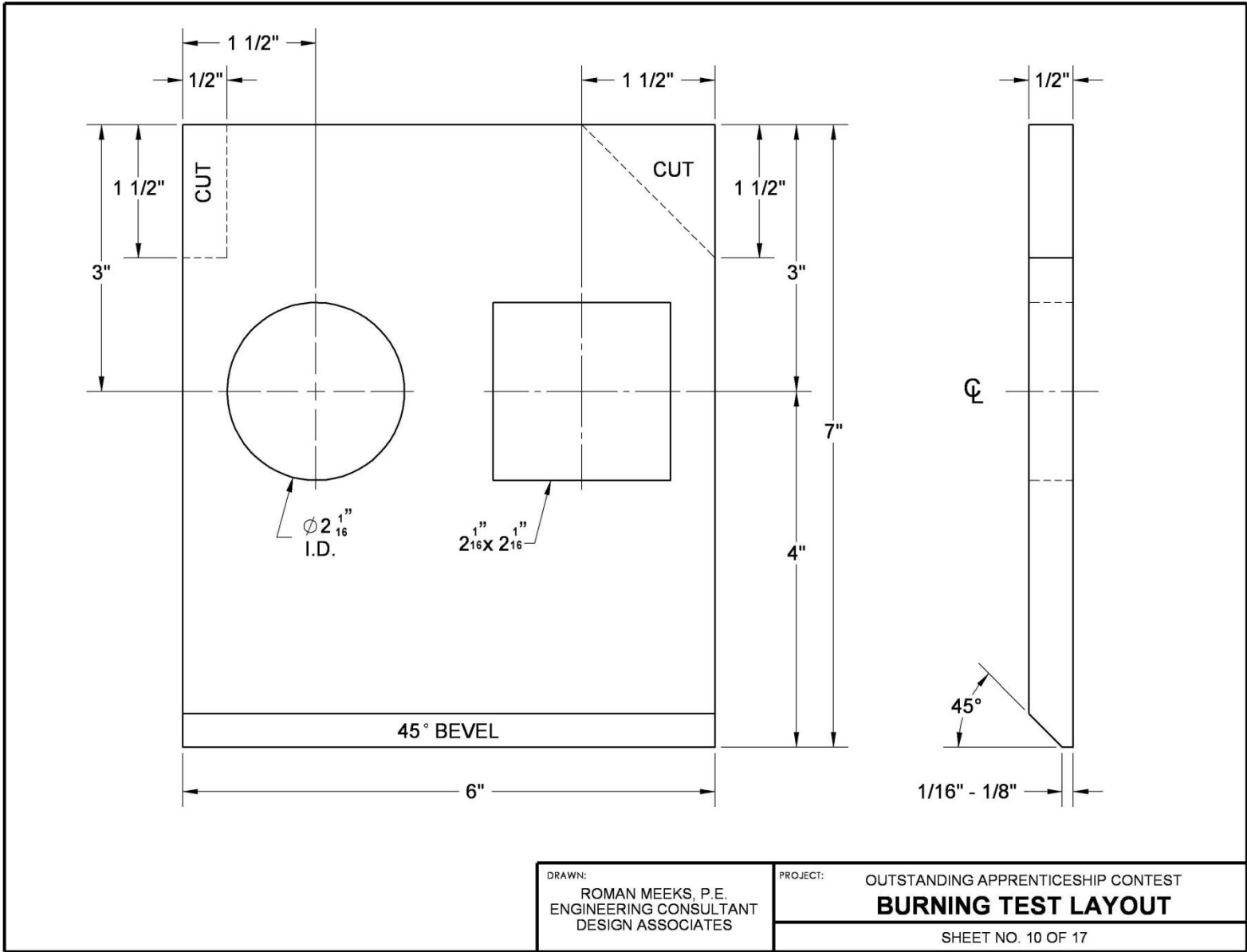
1. Contestants will be randomly selected to determine the order in which they will demonstrate their ability to layout and burn the plate.
2. Contestants must wear their hard hat, safety glasses, and gloves at all times during the layout process.
3. Contestants must wear their hard hat, safety glasses, gloves, and personal protective equipment at all times during the burning procedure.
4. The burning test will consist of laying out and burning a plate to specifications. Each contestant will have 45 minutes to complete the contest.
5. Each contestant's plate will be pre-stamped with the contestant number to avoid confusion.
6. The contestant will be expected to perform the following according to the drawing included in these guidelines:
  - Square hole to accept 2 inch square stock – 3 points
    - Check on accuracy of layout and burn
    - Over or under 2 inches
    - Burned square
    - Smooth or rough cut
    - Square to top of plate
  - Round hole to accept 2 inch round stock – 3 points
    - Check on accuracy of layout and burn
    - Over or under 2 inches
    - Burned round
    - Smooth or rough cut
    - Square to top of plate

- 45 degree bevel – 3 points
    - More or less than 45 degrees
    - Smooth or rough cut
    - Land – more or less than allowed
  
  - 90 degree cut line – 3 points
    - Accurate lay out
    - Straight cut
    - Smooth or rough cut
    - Square to top of plate
    - Square corners
  
  - 45 degree cut line – 3 points
    - Accurate layout
    - Straight cut
    - Smooth or rough cut
    - Square to top of plate
    - Square corners
7. Contestants **shall use only those tools listed** in these guidelines (including their own tips).
  8. **The use of any circular or square objects such as, but not limited to, washers or test plugs will not be permitted to perform the layout of the plate.**
  9. Lay out of the task must be exactly like the drawing included with these guidelines.
  10. Contestants must use the torch, gauges, and hoses supplied by the contest committee.
  11. The contestant must demonstrate correct safety practices at all times. The contest judges may stop a competitor at any time if they deem the contestant's manner to be hazardous to either themselves or others. Such stoppage will disqualify the contestant from that section of the contest. If the contestant is warned a second time, he or she will be disqualified as a contest participant.
  12. While the contest is in progress, there shall be no communication between the contestants or between the contestants and anyone else except as directed by a judge or contest official.

## Contest Scorecard

This contest will be scored as follows:

1. The Burning contest is worth fifteen (15) points with points earned for each of the following:
  - Square hole to accept 2 inch square stock (3 points)
  - Round hole to accept 2 inch round stock (3 points)
  - 45° bevel (3 points)
  - 90° cut line (3 points)
  - 45° cut line (3 points)
2. If the test slug used by the judges will not pass through the square or round holes, there will be an automatic deduction of two (2) points from the available three (3) points allowed for each task.
3. Contest judges should use the scoring sheet on the following page to record each contestant's points for each task and then determine the total points earned by each contestant.
4. These results will be submitted to the contest officials responsible for compiling the overall competition results.



## Burning Contest Scoring Sheet

Contest Location: \_\_\_\_\_

Date: \_\_\_\_\_

Judges: \_\_\_\_\_

Contestant Number	2" Square Points	2" Round Points	45° Bevel Points	90° Cut Line Points	45° Cut Line Points	Total Points

<b>Contestant Number</b>	<b>2" Square Points</b>	<b>2" Round Points</b>	<b>45° Bevel Points</b>	<b>90° Cut Line Points</b>	<b>45° Cut Line Points</b>	<b>Total Points</b>