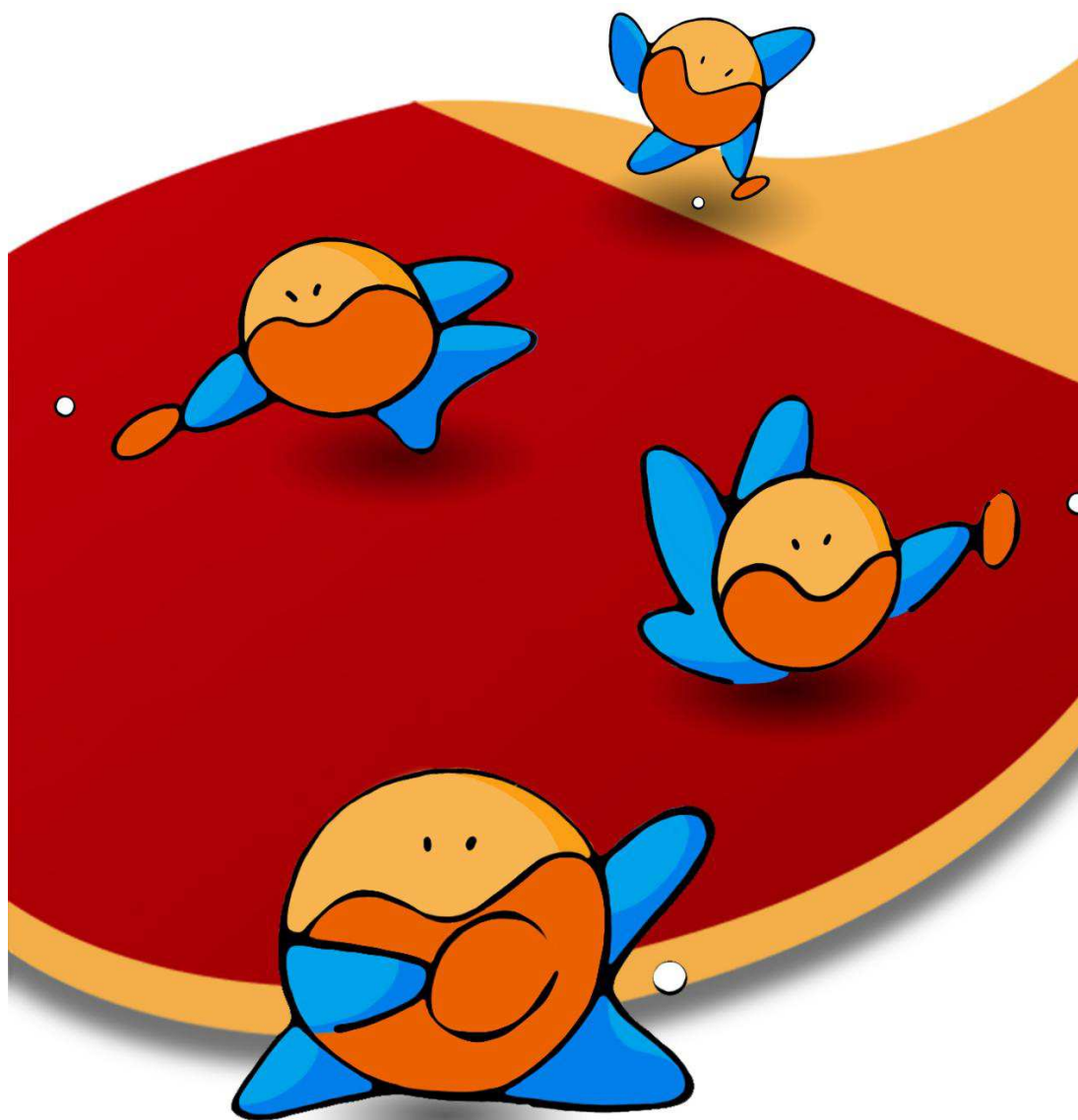




观致汽车2015年第53届世界乒乓球锦标赛 Qoros 2015 World Table Tennis Championships



Bulletin

Title Sponsor



QOROS
观致汽车

Major Sponsor



Internet Sponsor



LIEBHERR

Equipment Sponsor



创新·改变世界





Contents

About Suzhou	2
Location	2
Climate	2
Currency	2
Time Zone	3
Transportation	3
Introduction of the competition	3
Organizer	3
Duration of the Championships	4
Equipment	4
Competitions	4
Events	4
Venue	5
Suzhou Challenge	5
Opening Ceremony	5
Official Hotels	6
Transportation	8
Accreditation	8
Ticket Information	9



About Suzhou

Suzhou, the cradle of Wu culture, originally built in 514 B.C., boasting a history of more than 2,500 years, which entitles the city one of "24 Cultural and Historic Cities ". As one of the key cities in the Yangtze Delta, Suzhou is a renowned cultural, historic and tourist city.

Suzhou spreads on a low terrain, with the plain covering 55% of the total area. With a network of rivers and canals as well as a fertile land, the city is rich in a variety of agricultural products. As a well-known " Land of Fish and Rice" as well as a "Silk Capital", Suzhou enjoys a fame of " Paradise on Earth".

In today's Suzhou, there are 778 cultural relics under municipal-and-upper level protection. Over 60 classical gardens are well preserved and 9 of them are listed in the Catalog of World Cultural Heritage.

Location

The city is located in the East Coast of China, bordering Shanghai on the east, whose coordinates are 31°19'N, 120°37'E.

Climate

Suzhou has a four-season, monsoon-influenced humid subtropical climate. The average temperature during WTTC (26 April, 2015 to 3May) is about 20°C, while the coldest temperature is about 11-12°C, and the hottest is about 28-30°C.

Currency

The legal currency of the People's Republic of China is RMB (Chinese yuan). Its exchange rates with other countries are listed as follows (February, 2015).

100RMB = 15.99 U.S.D



观致汽车2015年第53届世界乒乓球锦标赛 Qoros 2015 World Table Tennis Championships

26 April -3 May 2015, Suzhou, China

100RMB = 14.08 Euro

Currency exchange service is provided in the official hotels.

Time Zone

GMT +8

Transportation

Suzhou enjoys a unique location with great convenience in transportation. A crisscross, open and well-organized transportation system has been formed in Suzhou including railways like Beijing-Shanghai railway, Beijing-Shanghai express railway, and highways like Huning highway, and Su Jiahang highway. And the transportation system in the city also operates well with a convenient regional transportation network, which is comprised of buses, taxis, metros (Line 1 and Line 2), and tramcars. Suzhou International Expo Centre, the competition hall, locates in the core area of CBD of Suzhou Industrial Park. You can easily reach all corners of Suzhou by metro, bus or taxi from Suzhou Expo.

Suzhou traffic service hotline: +86-512-96196

Taxis booking service tel.: +86-512-67776777、+86-512-96520



Introduction of the competition

The 2015 World Table Tennis Championships will be hosted and organized by the Chinese Table Tennis Association (CTTA) and Suzhou government under the auspices and authority of the International Table Tennis Federation.



观致汽车2015年第53届世界乒乓球锦标赛 Qoros 2015 World Table Tennis Championships

26 April -3 May 2015, Suzhou, China

Organizer

Organizing Committee of QOROS 2015 World Table Tennis Championships

Location: 2nd Floor of 6B hall of Suzhou International Expo Centre in Suzhou, Jiangsu province, China.

Zip code: 215000

Tel: +86-0512-67951162

Fax: +86-0512-67951162

E-mail address: suzhouwtc@163.com

Official website: www.suzhou2015.org

Duration of the Championships

Sunday 26 April, 2015 to Sunday 3 May, 2015

Equipment

The following equipment will be used:

Tables, Net and Post: Double Happiness (purple blue)

Ball: Butterfly 40+ *** (white)

Sports flooring: Gerflor/Taraflex (red)



Competitions:

Events

The following Championship events will be played:

Event 1: Men's Singles, for the St. Bride Vase (Holder: ZHANG Jike, China)

Event 2: Women's Singles, for the G. Geist Prize (Holder: LI Xiaoxia, China)

Event 3: Men's Doubles, for the Iran Cup (Holders: CHEN Chien-An, CHUANG Chih-Yuan, Chinese Taipei)



观致汽车2015年第53届世界乒乓球锦标赛 Qoros 2015 World Table Tennis Championships

26 April -3 May 2015, Suzhou, China

Event 4: Women's Doubles, for the W. J. Pope Trophy (Holders: GUO Yue, LI Xiaoxia, China)

Event 5: Mixed Doubles, for the Heydusek Prize (Holders: KIM Hyok Bong, KIM Jong, DPR Korea)

Venue

Main competition hall: Suzhou International Expo Centre 3rd floor 5-6B

Second competition hall: Suzhou International Expo Centre 3rd floor 3B

Practice hall: Suzhou International Expo Centre 3rd floor 4B



Suzhou Challenge

“Suzhou Cup” International Table Tennis Challenge, a part of the 2015 World Table Tennis Championships will take place on 29 April 2015 during the period of the World Championships dated on 26 April to 3 May 2015 in Suzhou. The focus of the challenge is not only on the competition but also on participation and fun. Men's and women's singles will be played, and ITTF will accept 16-16 entries from those players who do not qualify for the Main Draw. Detailed information will be available on the ITTF.com web-site and will be distributed on site. The deadline for entry is before 12:00am, April 28th, 2015.



Opening Ceremony

The Opening Ceremony is going to be held on Saturday, 25th April from 14:00 to 15:00 at the Grand Theatre of Suzhou Culture and Arts Centre (300 meters to the west from Venue). The Organizing Committee will offer TWO tickets for each association



观致汽车2015年第53届世界乒乓球锦标赛 Qoros 2015 World Table Tennis Championships

26 April -3 May 2015, Suzhou, China

participating in the competition. Associations with less than two people can get tickets according to the actual number of people.

The draw for the top 16 seeded players in singles will take place during the opening ceremony.



Official Hotels

Hotel for ITTF Officials

Kempinski Hotel Suzhou

Address: Guobin Road 1, Suzhou Industry Park, Jiangsu Province, P.R. China

TEL: +86-512-62897888

URL: www.kempinski.com/suzhou

Distance: 8km to Suzhou Expo (competition hall), 15 minutes by car.

Hotel for Technical Officials

Jinji Lake Shilla Hotel

Address: Modern Piazza, Wang Dun Road, Suzhou Industrial Park, Jiangsu Province, P.R. China

TEL: +86-512-62968888

URL: www.jinjilakehotel.com

Distance: 1km to Suzhou Expo (competition hall).

Hotels for delegations

Four Points by Sheraton Suzhou

Address: No. 8 Moon Bay Road Suzhou Industrial Park, Jiangsu Province, P.R. China

TEL: +86-512-67997999



观致汽车2015年第53届世界乒乓球锦标赛 Qoros 2015 World Table Tennis Championships

26 April -3 May 2015, Suzhou, China

URL: www.fourpoints.com/suzhou

Distance: 8km to Suzhou Expo (competition hall), 17 minutes by car.

World Hotel Grand Dushu lake Suzhou

Address: 299 Qiyue Street, Suzhou Industrial Park, Jiangsu Province, P.R. China

TEL: +86-512-69568888

URL: www.worldhotelgranddushulake.com

Distance: 9km to Suzhou Expo (competition hall), 18 minutes by car.

Jinling Guanyuan International Hotel Suzhou

Address: 168 Cuiwei Avenue, Suzhou Industrial Park, Jiangsu Province, P.R. China

TEL: +86-25-84763008

URL: 068.jinlinghotels.com/English/Index.html

Distance: 7km to Suzhou Expo (competition hall), 16 minutes by car.

Suzhou Grand Metro Park Hotel

Address: 1335 jinjiu Avenue, Suzhou Industrial Park, Jiangsu Province, P.R. China

TEL: +86-512-62800666-8801

URL: www.hkctshotels.com/suzhou

Distance: 7km to Suzhou Expo (competition hall), 16 minutes by car.

Room services

For additional services in the hotels like hotel phones, mini bars, and laundry, guests themselves should complete the payments before leaving the hotels.

Check-in time: 14:00

Check-out time: 14:00

If arriving ahead of schedule, the guests can stay in the waiting area of the hotel.



观致汽车2015年第53届世界乒乓球锦标赛 Qoros 2015 World Table Tennis Championships

26 April -3 May 2015, Suzhou, China

Amenity

Internet, hair dryer, towel, electric kettle, toothbrush and toothpaste, shampoo, hair conditioner, body wash, comb, bathrobe, free coffee and mineral water.

Meals

Hotels will provide breakfast, lunch and dinner.





观致汽车2015年第53届世界乒乓球锦标赛 Qoros 2015 World Table Tennis Championships

26 April -3 May 2015, Suzhou, China



Transportation

The shuttle buses between the official hotels and ShangHai Pudong International Airport or Shanghai Hongqiao International Airport are arranged in accordance with the arrival and departure time provided in time. You can take the shuttle bus with your accreditation card.

Service time: 23rd April 9:00 to 5th May 24:00.



Accreditation

Accreditation centre for delegations will be in operation at the World Hotel Grand Dushu Lake Suzhou from 23 April. The registration for ITTF officials and staff is placed at Kempinski Hotel and for referees, umpires at Jinji Lake Shilla Hotel, starting on 24 April morning. All participants can register after completing their payments.



Ticket Information

Chinese website for tickets:

<http://www.suzhou2015.org>

English website for tickets:

<http://www.t3.com.cn/en/pingpang>

Second competition hall tickets:

Tickets for the second competition hall can be obtained in Venue Information Center.