



Submittal Review Sheet

project: MHS NUC/MED Relocation
contractor: GH Phipps Construction Companies
submittal: Toilet Accessories
spec section ref: Division 10

date: 11-21-12
job #: MS-9044
contr. ref no:

shop drawings product data samples color chart
 other - O&M

action codes:

A	B	C	D	E
No exceptions taken.	Make corrections noted. No re-submittal required.	Make corrections noted. Revision and re-submittal required.	Rejected. Submit specified item.	Not reviewed.

submittals reviewed:

item	manufacturer/ subcontractor	remarks noted below	action code
10800.01-.02 Toilet Accessories	Bobrick / GP	1	A

remarks:

1. Refer to comments and/or corrective action items on each individual page.

Review is only for general conformance with the information given in the contract documents. Any action shown is subject to the requirements of the drawings and specifications. Contractor is responsible for dimensions, fabrication processes, techniques of construction and coordination of his work with all other trades.

copy to: File

date: 11-21-12
signed: Dale Skinner

2000 West Littleton Blvd
 Littleton, Colorado 80120

303 738 8877
 303 738 2294 fax

www.intergrouparchitects.com



496 Nevada Mesa View
 Colorado Springs, CO 80907-4347
 719-633-4673
 719-471-3169 (fax)

TRANSMITTAL
No. 13D1247-0004

PROJECT: MHS-Nuclear Medicine Project North Hospital

DATE: 11/17/2012

TO: Intergroup Architects
 2000 W Littleton Blvd
 Littleton CO 80120

RE: 10800-Toilet Accessories

ATTN: Dale Skinner

JOB: 13D1247

Ph/Fax: 303-738-8877

WE ARE SENDING:	SUBMITTED FOR:	ACTION TAKEN:
<input type="checkbox"/> Shop Drawings	<input type="checkbox"/> Approval	<input type="checkbox"/> Approved as Submitted
<input type="checkbox"/> Letter	<input type="checkbox"/> Your Use	<input type="checkbox"/> Approved as Noted
<input type="checkbox"/> Prints	<input type="checkbox"/> As Requested	<input type="checkbox"/> Returned After Loan
<input type="checkbox"/> Change Order	<input checked="" type="checkbox"/> Review and Comment	<input type="checkbox"/> Resubmit
<input type="checkbox"/> Plans		<input type="checkbox"/> Submit
<input type="checkbox"/> Samples	SENT VIA:	<input type="checkbox"/> Returned
<input checked="" type="checkbox"/> Specifications / Product Data	<input checked="" type="checkbox"/> Attached	<input type="checkbox"/> Returned for Corrections
<input type="checkbox"/> Other:	<input type="checkbox"/> Separate Cover Via:	<input checked="" type="checkbox"/> Due Date: 11/21/2012

NOTES:

<i>Item</i>	<i>Package</i>	<i>Code</i>	<i>Rev.</i>	<i>Copies</i>	<i>Date</i>	<i>Description</i>	<i>Status</i>
Submittal	10800	10800.01	1	1	11/17/2012	Toilet Accessories	Architect Review
Submittal	10800	10800.02	1	1	11/17/2012	Toilet Accessories	Architect Review

CC:

Signed: _____
 Dan Lane

Project: MHS Nuclear Medicine
Phipps' Job #: 13D1247
Submittal #: 10800.01 and .02

Intergroup Architects
 2000 West Littleton Blvd.
 Littleton, CO 80120

<p>Gerald H. Phipps, Inc.:</p> <p style="text-align: center;">SUBMITTED GH Phipps <i>Construction Companies</i></p> <p>GH Phipps has reviewed, approved, and herby submits the attached in accordance with the contract documents.</p> <p>Note to Subcontractor/Material Supplier: Subcontractor/Material Supplier remains responsible for the confirmation and correlation of dimensions at the jobsite; fabrication processes and construction techniques; coordination of the work with the work of other trades; and satisfactory performance of the work.</p>	<p>Architect:</p>
<p>Engineer:</p>	<p>Other:</p>

NOTES:

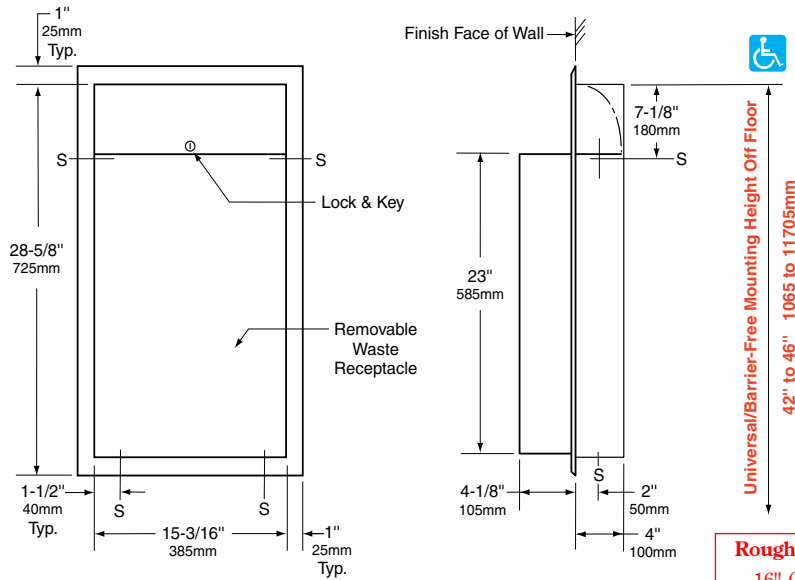
Signed: Dan Lane, LEED AP BD+C
 GH Phipps Representative



Technical Data

RECESSED WASTE RECEPTACLE FOR 4" (102mm) WALLS

B-3644



Rough Wall Opening
 16" (405mm) wide
 29-1/4" (745mm) high
 4" (102mm) minimum
 recessed depth

MATERIALS:

Cabinet — 18-8 S, type-304, heavy-gauge stainless steel. All-welded construction. Exposed surfaces have satin finish.

Flange — 18-8 S, type-304, 22-gauge (0.8mm) stainless steel with satin finish. Drawn and beveled, one-piece, seamless construction.

Waste Receptacle — 18-8 S, type-304, 22-gauge (0.8mm) stainless steel with satin finish. Front and side edges of bottom and all top edges are hemmed for safe handling. Secured to cabinet with a tumbler lock keyed like other Bobrick washroom accessories. Equipped with interior hooks for optional vinyl liner. Capacity: 12-gal. (45.4-L).

OPERATION:

To empty waste receptacle, unlock with key provided. Liner cannot be removed unless waste receptacle is unlocked from cabinet. Reusable vinyl liners are available as an optional accessory: order Bobrick Part No. 3944-12.

After unit is in use, if greater capacity waste receptacle is needed, an 18-gal. (68.1-L) capacity waste container can be substituted; order Bobrick Part No. 368-60 Waste Receptacle and Part No. 368-16 Vinyl Liner.

INSTALLATION:

Provide framed rough wall opening 16" wide x 29-1/4" high (405 x 745mm). Minimum recessed depth required to finish face of wall is 4" (102mm). Allow clearance for construction features that may protrude into rough wall opening from opposite wall. Coordinate with mechanical engineer to avoid pipes, vents, and conduits. If unit projects above top of wainscot, provide aluminum channel or other filler to eliminate gap between flange and finish face of wall. Mount unit in wall opening with shims between framing and cabinet at all points indicated by an S, then secure unit with sheet-metal screws (not furnished).

SPECIFICATION:

Recessed waste receptacle shall be type-304 stainless steel with all-welded construction; exposed surfaces shall have satin finish. Flange shall be drawn and beveled, one-piece, seamless construction. Removable waste receptacle shall be secured to cabinet with a tumbler lock keyed like other Bobrick washroom accessories, have front and side edges of bottom and all top edges hemmed for safe handling, and shall have a minimum capacity of 12-gal. (45.4-L). Manufacturer's service and parts manual shall be provided to the building owner/manager upon request.

Recessed Waste Receptacle shall be Model B-3644 of Bobrick Washroom Equipment, Inc., Clifton Park, New York; Jackson, Tennessee; Los Angeles, California; Bobrick Washroom Equipment Company, Scarborough, Ontario; Bobrick Washroom Equipment Pty. Ltd., Australia; and Bobrick Washroom Equipment Limited, United Kingdom.



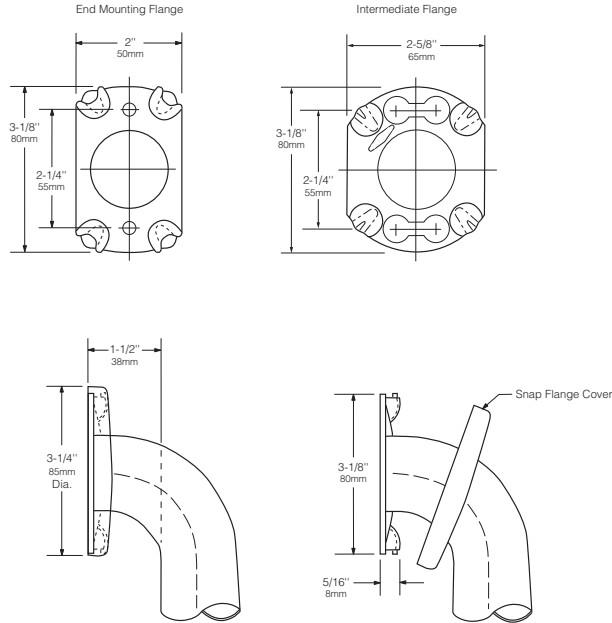
Technical Data

**1½" (38mm) DIAMETER
STAINLESS STEEL GRAB
BARS WITH SNAP FLANGE**

**B-6806
SERIES**

Specify Finish Required:

- Satin finish
- Satin finish with peened gripping surface; add suffix .99 to model number



<p>HORIZONTAL</p>	<p>VERTICAL</p>	<p>TWO-WALL WHEELCHAIR TOILET COMPARTMENT</p>
<p>B-6806 x 12, 18, 24, 30, 36, 42, 48</p>		<p>B-68137</p>
<p>HORIZONTAL TUB BATH 24 x 36</p>	<p>HORIZONTAL TWO-WALL BAR for Shower Stall</p>	<p>TWO-WALL TOILET COMPARTMENT BAR 42 x 54</p>
<p>B-68616</p>	<p>B-6861</p>	<p>B-6897</p>

continued . . .

MATERIALS:

Grab Bar — 18-8 S, type-304, 18-gauge (1.2mm) stainless steel tubing with satin-finish. 1-1/2" (38mm) outside diameter. Ends are heliarc welded to flanges. Clearance between the grab bar and wall is 1-1/2" (38mm).

Concealed Mounting Flanges — 18-8 S, type-304, 1/8" (3mm) thick, stainless steel plate; end flanges 2" x 3-1/8" (50 x 80mm) with two holes for attachment to wall. Intermediate flanges 2-5/8" x 3-1/8" (65 x 80mm) wide x 3-1/8" (80mm) diameter.

Snap Flange Covers — 18-8 S, type-304, 22-gauge (0.8mm) drawn stainless steel with satin-finish. 3-1/4" (85mm) diameter x 1/2" (13mm) deep. Each cover snaps over mounting flange to conceal mounting screws.

STRENGTH:

Bobrick grab bars that provide 1-1/2" (38mm) clearance from wall can support loads in excess of 900 pounds (408kg) if properly installed. Other grab bar configurations can support loads in excess of 250 pounds (113kg) if properly installed, complying with barrier-free accessibility guidelines (including ADAAG in the U.S.A.) for structural strength

Warning: *Grab bars are no stronger than the anchors or walls to which they are attached and, therefore, must be firmly secured in order to support the loads for which they are intended.*

INSTALLATION:

Provide concealed anchor device or backing as specified or required in accordance with local building codes before wall is finished. Fasten concealed mounting flanges to anchor device or backing with two screws in each flange. Snap flange covers over each mounting flange to conceal mounting screws. Concealed anchor devices and mounting screws are not included with Bobrick grab bars and must be specified as an accessory.

For Grab Bars with an Intermediate Flange(s), Pull Snap-Flange Covers away from mounting flanges. Place grab bar in desired mounting location. Use intermediate flange as a template to mark location of mounting screws at intermediate flange only. Mark screw locations at the center of the slot in the middle of the double-keyhole shaped mounting holes (2) in the intermediate flange. Remove grab bar from wall. Drive the intermediate flange mounting screws into wall at marked locations. **Note:** Make sure to leave a space of just over 1/8" (3.17mm) between the underside of the screw head and the wall. install grab bar on the wall by placing the round ends of the intermediate flange double-keyhole shaped mounting holes over the mounting screws (2) are located in the middle of the flange slots. Install the mounting screws into the wall at the end flanges and secure tightly. Tighten the mounting screws at the intermediate flange. Press all snap-flange covers into place to conceal mounting flanges.

Note: Recommend use of 1/4" or #14 (M6.3) sheet metal or wood screws to install Intermediate Flange. #12 (M5.5) screws may also be used.

Important Notes:

1. **Mounting Kits** — Bobrick has a selection of mounting screws and fasteners available for different types of installations; **one Bobrick mounting kit is required for each flange.**

Mounting Kit No.	Description
252-30	Consists of (3) #14 x 2½" (M6.3 x 64mm) type-304 stainless steel, Phillips round-head, sheet-metal screws.
2521-30	Consists of (3) 1/4"-20 x 3½" (M6.3-1 x 89mm) type-304 stainless steel, Phillips round-head, machine screws with plated-steel toggle nuts.
2522-30	Consists of (3) 1/4"-20 x 2" (M6.3-1 x 51mm) type-304 stainless steel, Phillips round-head, machine screws with metal expansion shields.

2. **Grab Bar Fastener** — Bobrick has a grab bar fastening system that secures all Bobrick grab bar series; **one Bobrick fastener is required for each flange.** Install grab bar without backing in wall requires minimum 5/8" (16mm) thick painted or tiled drywall.

WingIt™ Fastener No.	Description
251-4	Consists of (3) 10-32 x 5/16" round-head, Phillips 18/8 stainless steel screws. (1) WingIt grab bar fastener.

3. **Optional Anchor Device** — Bobrick grab bar anchor device includes stainless steel machine screws to be used for attaching grab bars to anchors. **one Bobrick concealed anchor device is required for each flange.**

Optional Anchor No.	Description
2583	Anchor for 3/4" to 1" (19-25mm) panel 1 anchor required for each flange.
2586	Anchor for 1/2" to 1" (13mm) panel 1 anchor required for each flange.

SPECIFICATION:

Grab bar shall be type-304 stainless steel with satin-finish. Grab bar shall have 18-gauge (1.2mm) wall thickness and 1-1/2" (38mm) outside diameter. Clearance between the grab bar and wall shall be 1-1/2" (38mm). Concealed mounting flanges shall be 1/8" (3mm) thick stainless steel plate, 2" x 3-1/8" (50 x 80mm), and equipped with two screw holes for attachment to wall. Flange covers shall be 22 gauge (0.8mm), 3-1/4" (85mm) diameter x 1/2" (13mm) deep, and shall snap over mounting flange to conceal mounting screws and/or WingIt fasteners. Ends of grab bar shall pass through concealed mounting flanges and be heliarc welded to form one structural unit. Grab bar shall comply with barrier-free accessibility guidelines (including ADAAG in the U.S.A.) for structural strength.

Grab Bar shall be Model _____ (insert model number) of Bobrick Washroom Equipment, Inc., Clifton Park, New York; Jackson, Tennessee; Los Angeles, California; Bobrick Washroom Equipment Company, Scarborough, Ontario; Bobrick Washroom Equipment Pty. Ltd., Australia; and Bobrick Washroom Equipment Limited, United Kingdom.



Technical Data

MIRROR WITH STAINLESS STEEL CHANNEL FRAME

B-165 SERIES

SNAP LOCKING DESIGN (Rear View)

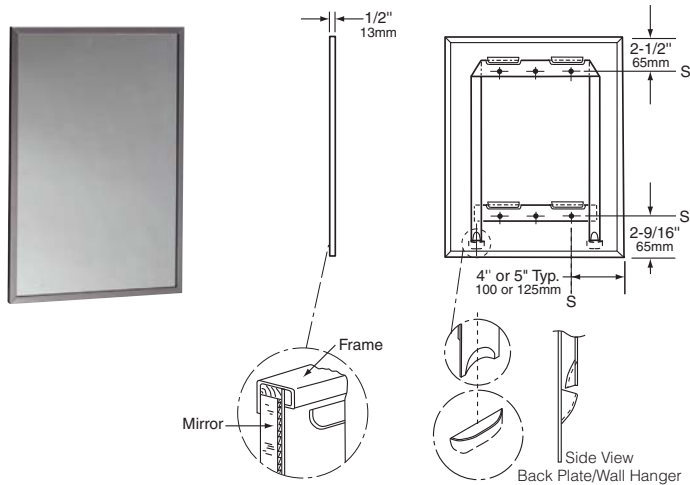


Figure: 1

SCREW LOCKING DESIGN (Rear View)

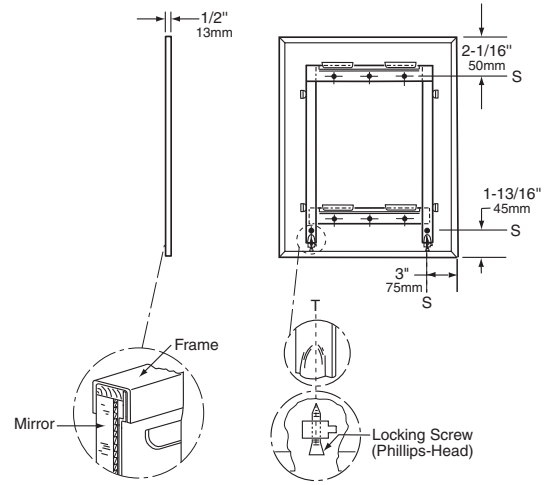


Figure: 2

STANDARD B-165 SERIES MIRRORS

MODEL NO.	OVERALL SIZE	
	W	H
B-165 1824	18" (46cm)	24" (61cm)
B-165 1830	18" (46cm)	30" (76cm)
B-165 1836	18" (46cm)	36" (91cm)
B-165 2430	24" (61cm)	30" (76cm)
B-165 2436	24" (61cm)	36" (91cm)
B-165 2448	24" (61cm)	48" (122cm)
B-165 2460	24" (61cm)	60" (152cm)

STANDARD B-165 SERIES MIRRORS

MODEL NO.	OVERALL SIZE	
	W	H
B-165 4836	48" (122cm)	36" (91cm)

All Other Size Mirrors

Designer's Notes:

- Special-order sizes available on request.
- Maximum size mirror available, 72" x 60" (183 x 152cm); minimum size, 12" x 12" (30 x 30cm).
- All Bobrick framed mirrors are manufactured to overall width and height dimensions. EXAMPLE: A 24" x 36" (61 x 91cm) mirror will be furnished 24" x 36" (61 x 91cm) outside-of-frame to outside-of-frame.
- To specify special sizes use Series Number followed by width then height in inches. EXAMPLE: B-165 2024.
- Bobrick framed mirrors are manufactured to a tolerance 1/8" (3.2mm).
- For sufficient space to lift mirror onto wall hanger(s), provide 3-1/4" (85mm) minimum clearance above center line of mounting screw holes.
- Provide 1" (25mm) minimum clearance at bottom of mirror for engaging locking screws and 1" (25mm) clearance on each side.

MATERIALS:

Frame — Type-430 stainless steel, 1/2" x 1/2" x 3/8" (13 x 13 x 9.5mm) channel with 1/4" (6mm) return at rear with bright polished finish. One piece frame with 90 degree mitered corners. Galvanized steel back has integral horizontal hanging brackets near the top for hanging the mirror and near the bottom to prevent the bottom of the mirror from pulling away from the wall. Locking devices secure mirror to concealed wall hanger. In Screw Locking Design (see figure 2), concealed Phillips-head locking screws securely fasten mirror to wall hanger.

Mirror — No. 1 quality, 1/4" (6mm) select float glass: selected for silvering, electrolytically copper-plated by the galvanic process, and guaranteed for 15 years against silver spoilage. Corners are protected by friction-absorbing filler strips; back is protected by full-size, shock-absorbing, water-resistant, nonabrasive, 3/16" (5mm) thick polyethylene padding.

Concealed Wall Hanger — 20-gauge (0.9mm) galvanized steel. Incorporates lower support member, forming rigid rectangle, which engages lower backplate louvers to keep bottom of mirror against wall.

continued . . .

INSTALLATION:

Mount wall hanger on wall with screws (not furnished) at points indicated by an S. For plaster or dry wall construction, provide backing to comply with local building codes, then secure wall hanger with screws (not furnished). When providing a concealed backing, allow backing to cover minimum range of mounting hole locations shown on drawing. For other wall surfaces, provide fiber plugs or expansion shields for use with screws (not furnished), or provide 1/8" (3mm) toggle bolts or expansion bolts. Hang mirror on wall hanger with all four backplate louvers engaged behind horizontal wall hanger members. Hang mirror on wall hanger with all four backplate louvers engaged behind horizontal wall hanger members. To do this, mirror must be centered in front of the wall hanger horizontally, pressed flat against the wall approximately 1" (25mm) above final position and then lowered into final position.

Snap Locking Design — Locking devices automatically secure mirror to concealed wall hanger when it is lowered into final position. Locking devices may be unlocked by inserting two flat blade screwdrivers behind each side of mirror near the bottom or under the bottom of the mirror and pulling mirror bottom forward and then up (see figure 3).

Screw Locking Design — Lock mirror to wall hanger by tightening Phillips-head locking screws that are concealed in the bottom of frame at points indicated by a T. Mirror may be unlocked from wall hanger by loosening locking screws and lifting mirror off of concealed wall hanger (see figure 4).

SNAP LOCKING DESIGN
(Front View)

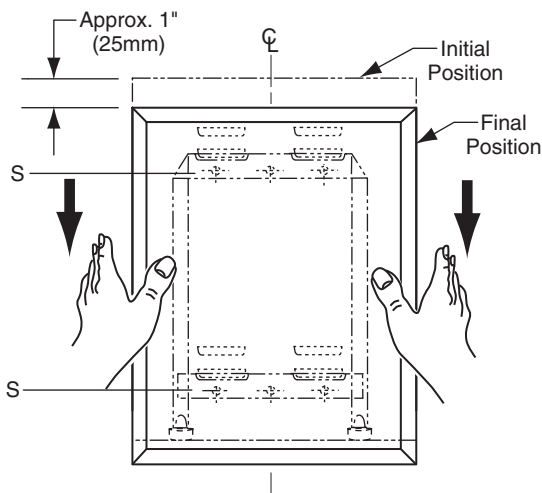


Figure: 3

SCREW LOCKING DESIGN
(Front View)

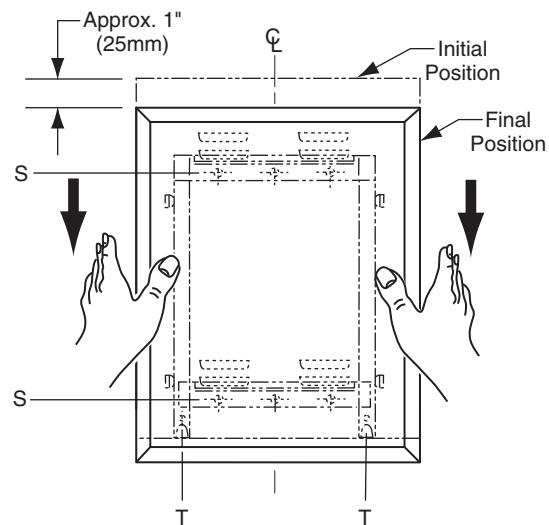


Figure: 4

SPECIFICATION:

Mirror shall have a one-piece type-430 stainless steel channel frame, 1/2" x 1/2" x 3/8" (13 x 13 x 9.5mm), with 90° mitered corners; all exposed surfaces shall have bright polished finish. Select float glass mirror shall be guaranteed for 15 years against silver spoilage. Corners shall be protected by friction-absorbing filler strips and the back shall be protected by full-size, shock-absorbing, water-resistant, nonabrasive, 3/16" (5mm) thick polyethylene padding. Galvanized steel back shall have integral horizontal hanging brackets located at top and bottom for mounting on concealed rectangular wall hanger to prevent the mirror from pulling away from the wall. Locking devices secure mirror to concealed wall hanger. Mirror shall be removable from the wall.

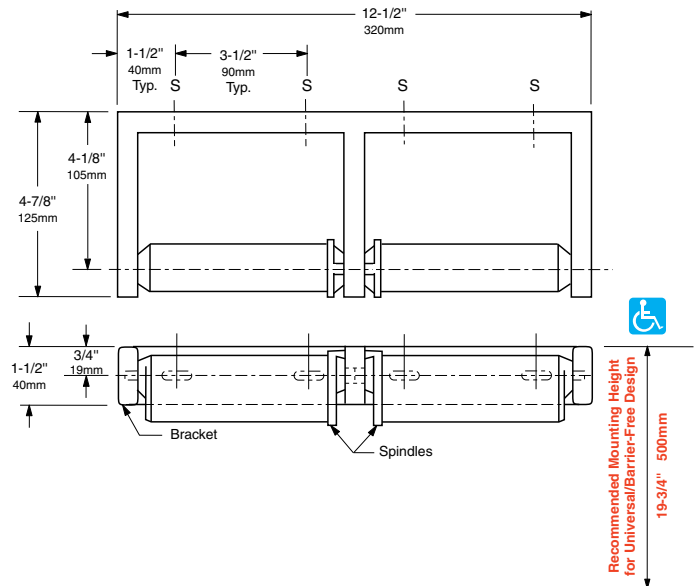
Framed Mirror shall be Model B-165 _____ (insert width and height) of Bobrick Washroom Equipment, Inc., Clifton Park, New York; Jackson, Tennessee; Los Angeles, California; Bobrick Washroom Equipment Company, Scarborough, Ontario; Bobrick Washroom Equipment Pty. Ltd., Australia; and Bobrick Washroom Equipment Limited, United Kingdom.



Technical Data

DOUBLE-ROLL TOILET TISSUE DISPENSER

B-2740



MATERIALS:

Bracket — Heavy-duty cast aluminum with satin finish.

Spindles (2) — Molded high-impact ABS. Equipped with retractable pin and concealed locking mechanism.

OPERATION:

Accommodates two standard-core toilet tissue rolls up to 6" (152mm) diameter (2000 sheets). Spindles can only be removed with special key furnished. Theft-resistant.

INSTALLATION:

For partitions with particle-board or other solid core, provide sheet-metal screws or through-bolts, nuts, and washers.

For hollow-core metal partitions, provide solid backing into which sheet-metal screws can be secured. If two units are installed back-to-back, then provide threaded sleeves and machine screws for the full thickness of partition.

For plaster or dry wall construction, provide concealed backing to comply with local building codes, then secure unit with sheet-metal screws.

For other wall surfaces, provide sheet-metal screws and fiber plugs or expansion shields, or provide 1/8" (3mm) toggle bolts or expansion bolts.

SPECIFICATION:

Double-roll toilet tissue dispenser shall have a heavy-duty cast-aluminum bracket with satin finish. Theft-resistant spindles shall be molded high-impact ABS with retractable pins and concealed locking mechanisms. Unit shall accommodate two standard-core toilet tissue rolls up to 6" (152mm) diameter (2000 sheets). Manufacturer's service and parts manual shall be provided to the building owner/manager upon request.

Double-Roll Toilet Tissue Dispenser shall be Model B-2740 of Bobrick Washroom Equipment, Inc., Clifton Park, New York; Jackson Tennessee; Los Angeles, California; Bobrick Washroom Equipment Company, Scarborough, Ontario; Bobrick Washroom Equipment Pty. Ltd., Australia; and Bobrick Washroom Equipment Limited, United Kingdom.

enMotion® Wall Mount Automated Touchless Towel Dispenser

Using technology to help improve hygiene, enhance image, and control costs.



Description:

Finally, a reliable and affordable automated touchless towel dispenser. enMotion® high-capacity towel system helps reduce the number of service visits and dispenses a single towel by waving your hand. Powered by four long-lasting standard D-cell batteries providing for easy and low maintenance requirements, this next generation of automated, touchless dispensing provides a cleaner, more hygienic environment, significantly lower waste and reduced maintenance. enMotion is a sleek solution to an age-old problem. *Only available via one time, lifetime, Lease Agreement with GP or authorized distributor.

Features & Benefits:

- » Automatic, touch-free dispensing prevents cross-contamination for a more hygienic washroom
- » Adjustable settings for sheet length, time delay, sensor range and dispensing mode controls usage and increases operational efficiency
- » One-at-a-time towel dispensing reduces waste and lowers operating costs
- » High tech functionality, sleek styling and quality toweling make positive statements about your facility
- » High-capacity system and paper transfer mechanism provide continuous service while reducing maintenance costs
- » Multiple power options - 4 Standard Alkaline D-Cell batteries (included) or optional AC power adapter
- » UL Listed

Product Details

Brand Owner	Georgia-Pacific
Brand	enMotion®
MFG Item#	59462
Color	Translucent Smoke
UP - UPC	073310594620
Each Per Ship Unit	1 Each
Items Per Each	0 Each
Case Total	1 Each
Dispenser (WxDxH)	14.800" x 9.750" x 16.750"
UNSPSC	47131701
LEED EB&OM	IO
Buy Multiple	1 EA

Case Shipping Info

Case GTIN	10073310594627
Case Gross Wgt	11.880 lbs
Case Net Wgt	7.400 lbs
Case Dimensions (LxWxH)	15.160" x 11.810" x 19.290"
Case Volume	1.960 CFT

Each Shipping Info:

Each Gross Weight	11.88 LBS
Each Net Wgt	7.4 LBS
Each Dimensions	15.160" x 11.810" x 19.290"
Each Volume	1.960 CFT

Unit Shipping Info

TI-Qty/Layer	6
HI-Layers/Unit	8
Unit Qty	48
Unit Dimensions (LxWxH)	45.380" x 37.750" x 95.000"





Advisory Bulletin

EFFECTIVE WAYS TO CLEAN STAINLESS STEEL

TB-21

CONDITION	CLEANING AGENT	PROCEDURE
Routine cleaning	Liquid soap or detergent Water-soluble household cleaners, diluted as recommended on label	Wipe on and remove with soft cloth or sponge Spray or wipe on and remove with soft cloth or sponge
Spots, fingerprints	Water-soluble household cleaners, full strength Liquid or cream metal polish made for stainless steel, chrome copper or brass	Spray or wipe on, rub spots with soft cloth or sponge As recommended by manufacturer
Stubborn spots, atmospheric discoloration	Liquid or cream metal polish made for stainless steel, chrome copper or brass	As recommended by manufacturer
Mineral deposit or scale from hard water	Commercial lime deposit removers, based on phosphoric and acetic acids 5% acetic acid (white vinegar)	Apply liberally, allow to stand for a few minutes; scrub with coarse toweling or soft bristle brush in direction of grain; rinse well with water
"Rust" spots resulting from exposure to harsh environmental and or chemical conditions.	Appropriate cleaner listed above, plus 150/180 grit emery paper and 3M Scotch Brite pad #7447, fine grade or equivalent	Clean surface as above, then rub stained area lightly with emery paper, polish with Scotch Brite pad Rub only with the grain direction of satin finishes. . .do not use on bright polished or brass surfaces

Always: Scrub and polish with the grain direction of satin finishes.

Remove any cleaning or soap residue from stainless surface with water and wipe dry with clean cloth or paper.

Caution: Avoid cleaning products containing chlorine bleach, hydrochloric or muriatic acid from contacting stainless steel. . . these are frequently found in toilet bowl or tile cleaners and in abrasive scrubbing powders.

Avoid use of steel wool which can leave behind fine particles that will rust on the surface.

Avoid use of abrasive cleaners on bright polish stainless steel or brass surfaces.