



Web Templates

Newest tutorials

Design Tutorials

Photo Effects

Special Effects

Animals

"HAPPY VALENTINE'S DAY CARD. PHOTOSHOP TUTORIAL"

You may get .psd* file of **"Happy Valentine's day card."** Photoshop tutorial by making a payment. Put the tutorial title in "Add special instructions to seller" line of PayPal and it will be sent to you shortly.

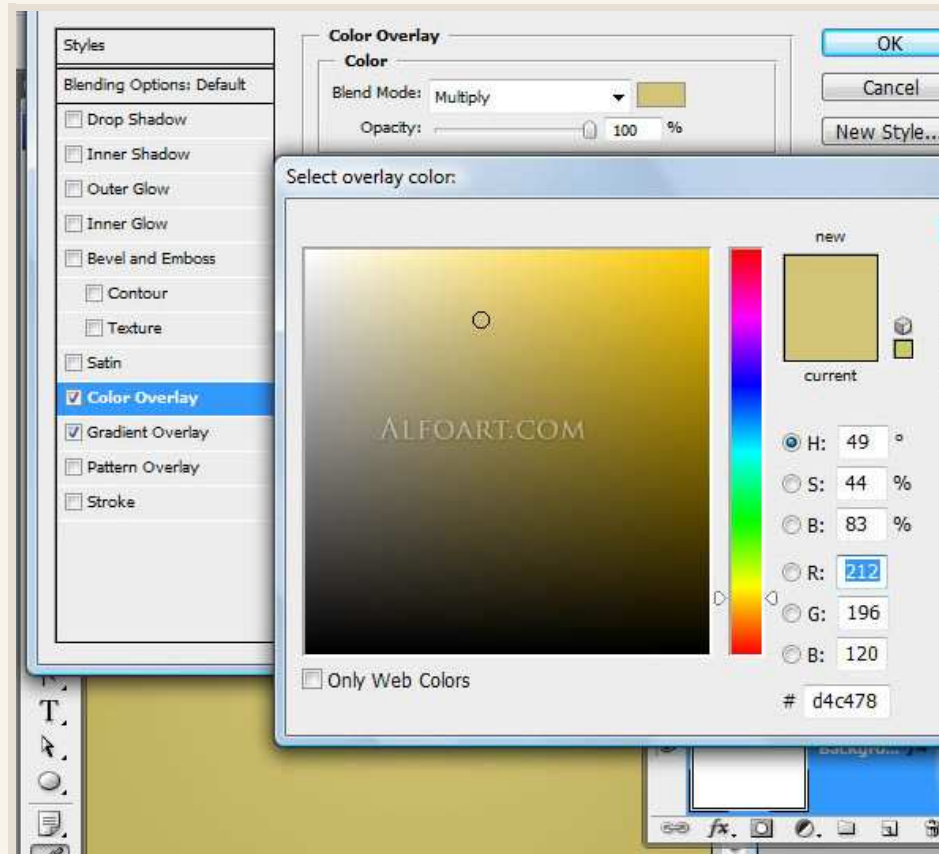
[Buy Now](#)

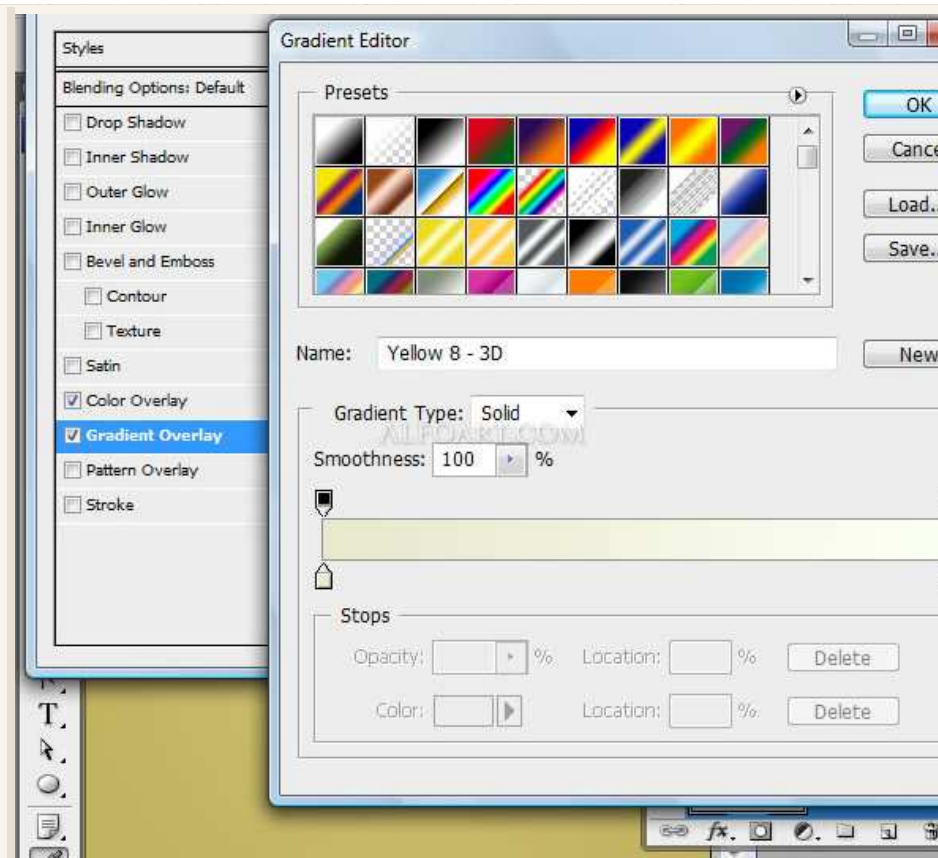


Used Images:

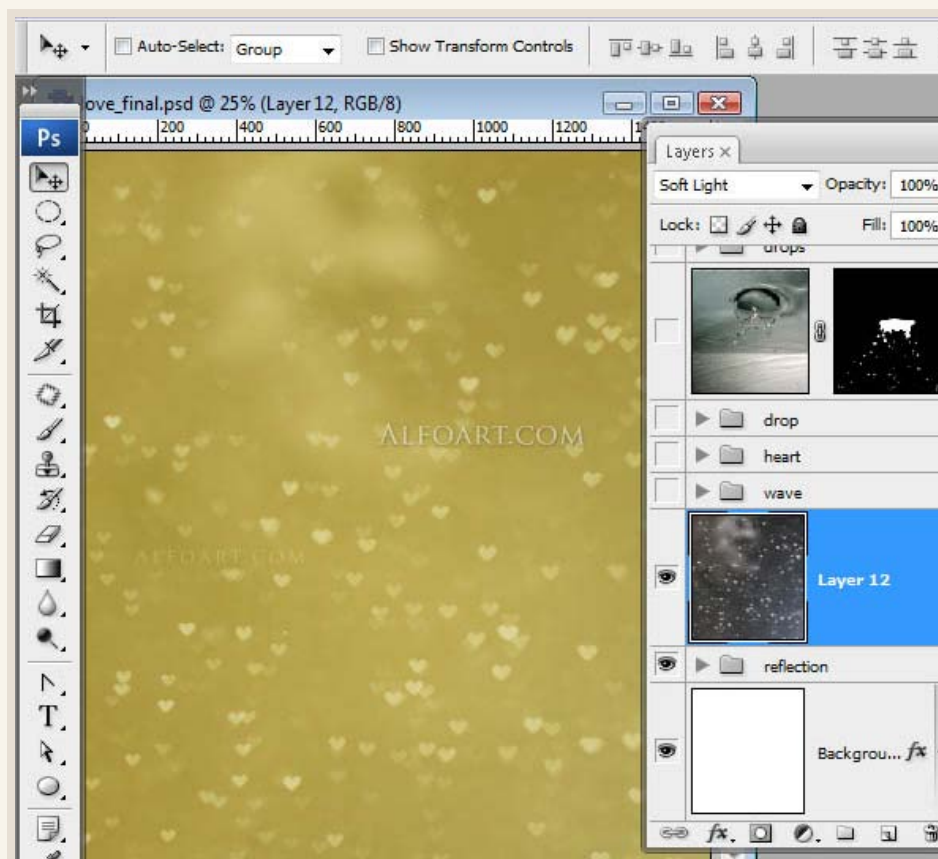
- ✓ Heart
- ✓ Drops
- ✓ Drop
- ✓ Water splash 1
- ✓ Water splash 2
- ✓ Bokeh

- ✓ Create a new document in Adobe Photoshop 1600* 1800 px.
- ✓ Apply Color a d Gradient Overlay effect to the first layer.
- ✓ Use the following settings:

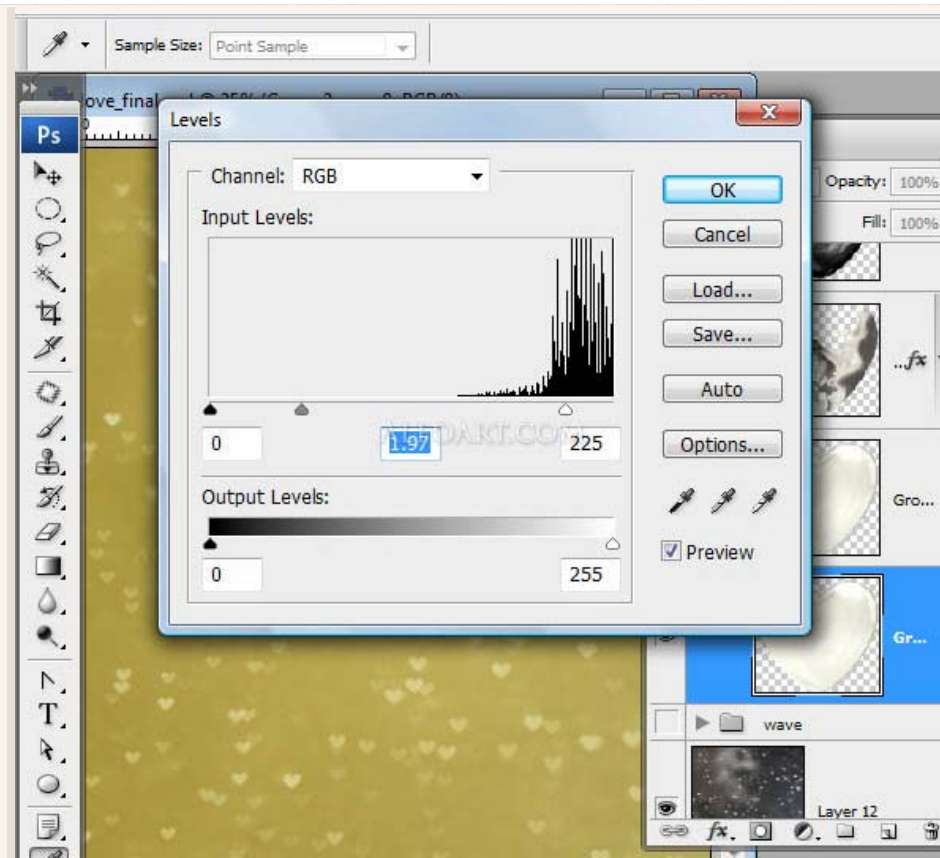




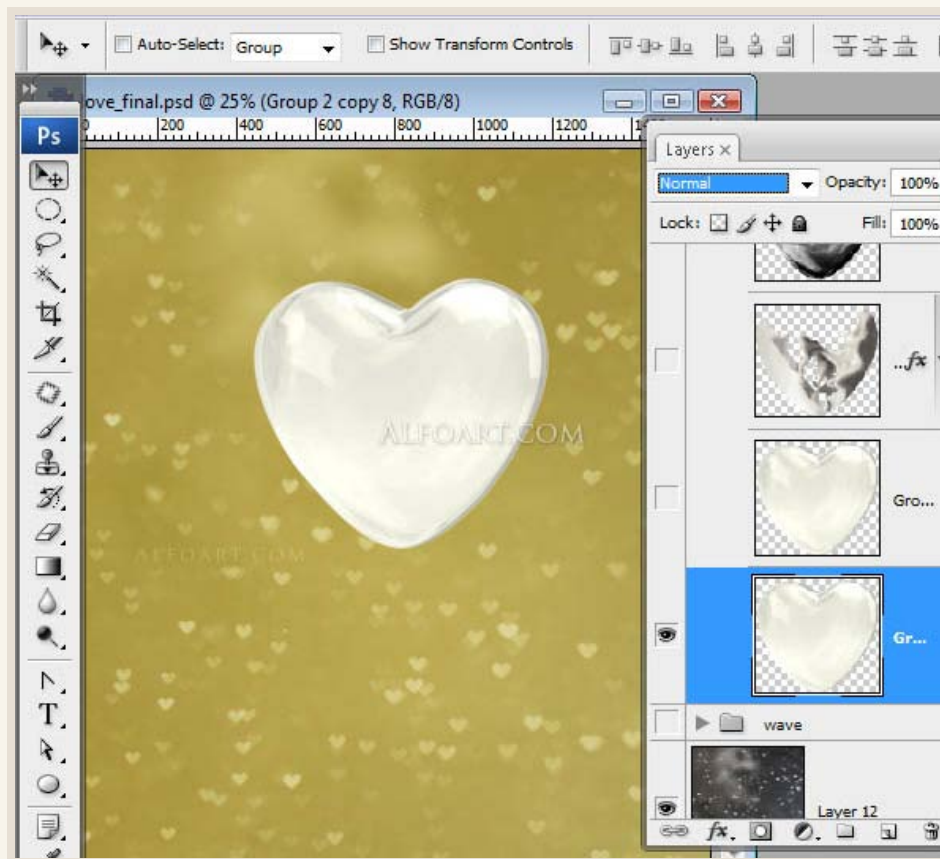
- ✓ Insert Bokeh pattern, apply Soft Light Blending Mode to it.

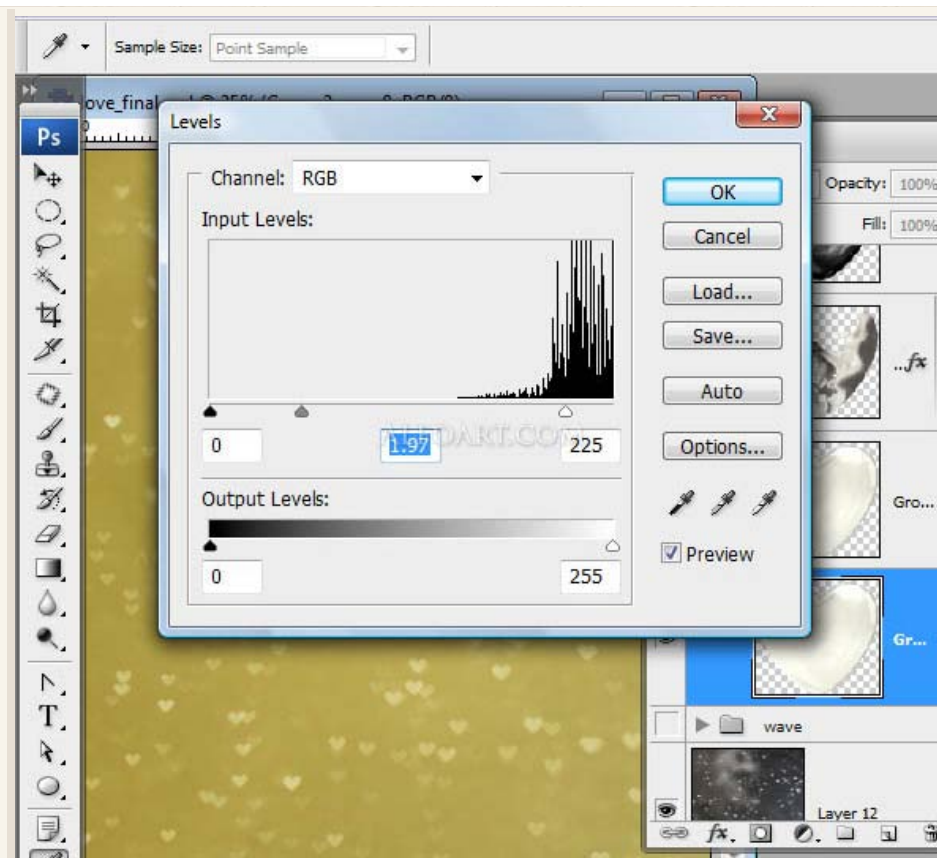


- ✓ Insert Heart image.
- ✓ Make it lighter. Go to Image > Adjustments > Levels.

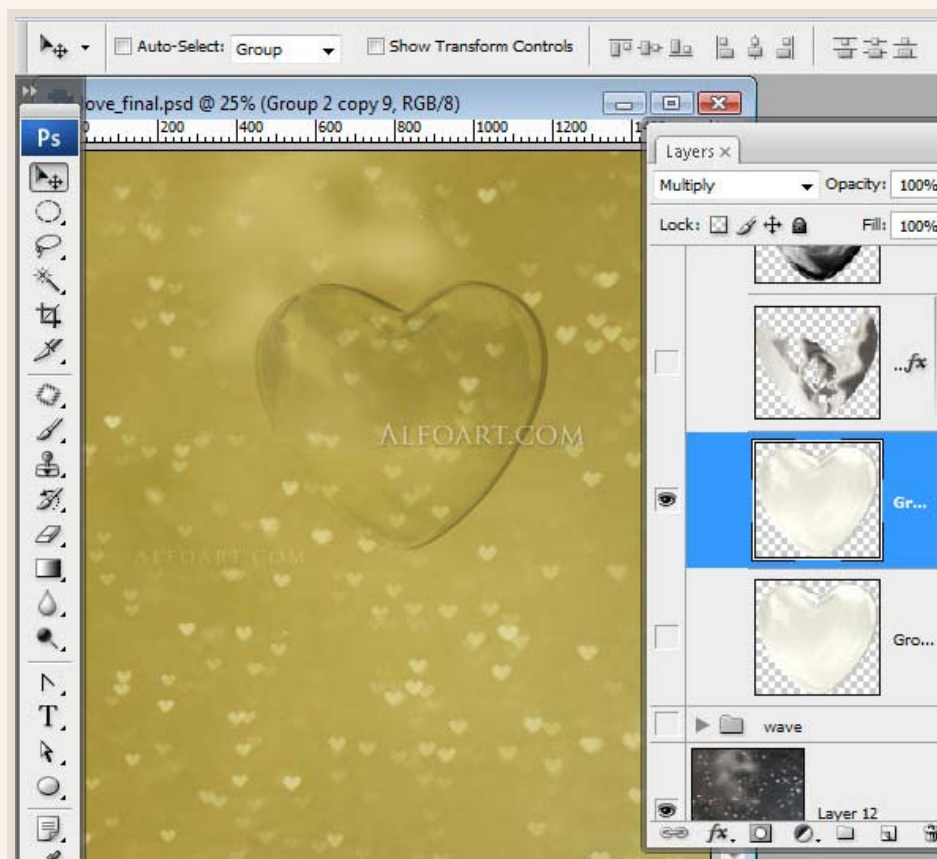


✓ You should get something like that:





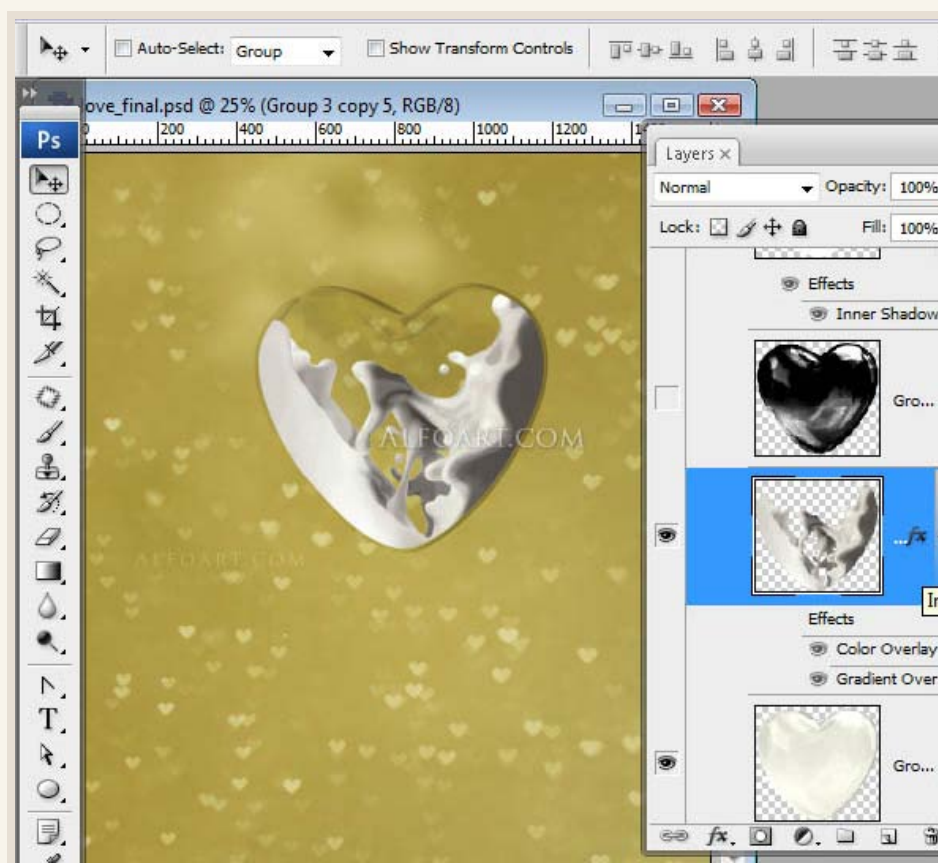
- ✓ Apply Multiply Blending Mode to created layer.



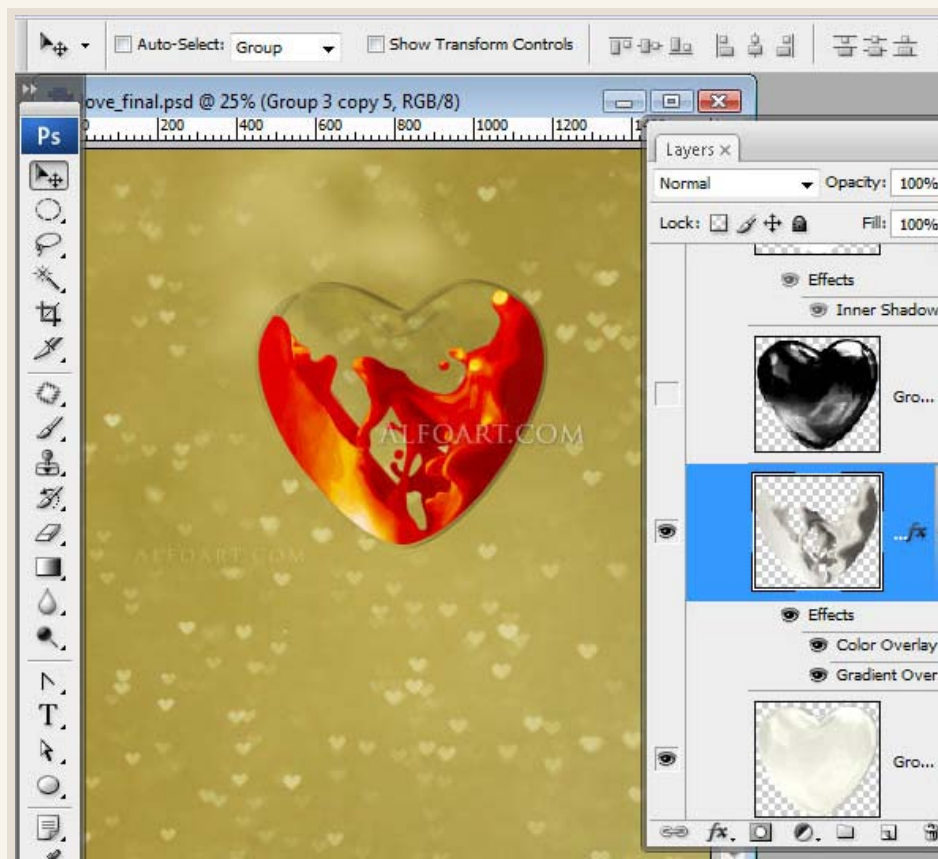
- ✓ Insert liquid image.
- ✓ Load selection to heart, Go to
- ✓ Select > Modify > Contract (10px).
- ✓

Select > Inverse Selection.

- ✓ Cut out selected area



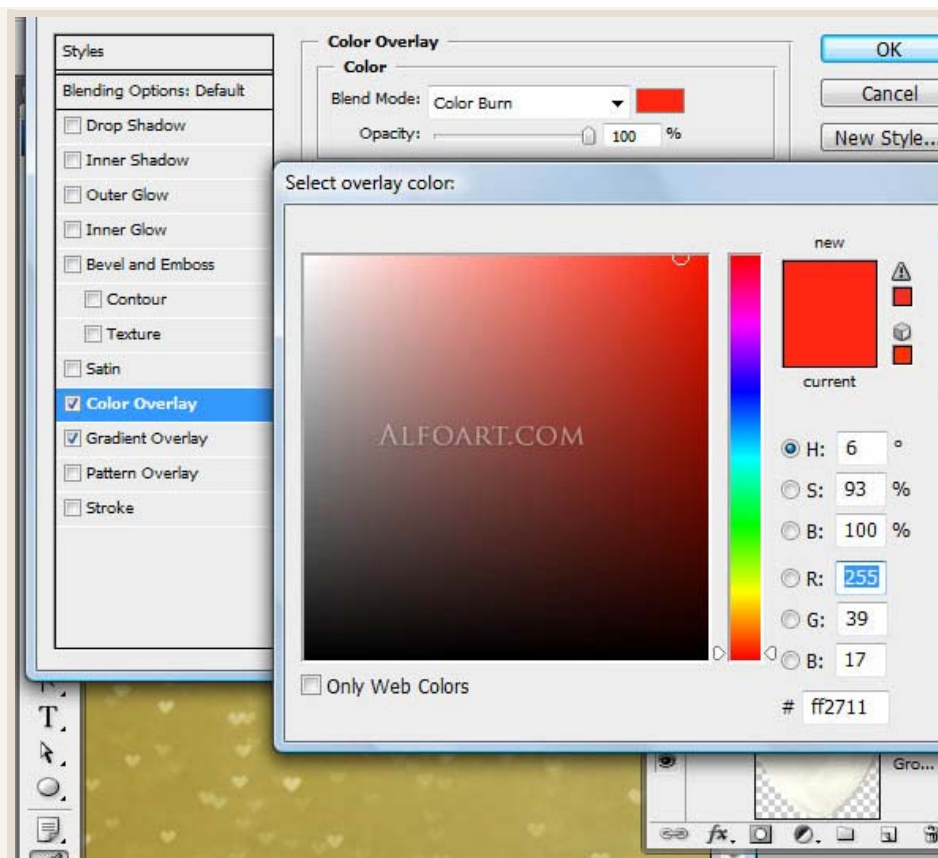
- ✓ Apply Color and Gradient Overlay effects to the liquid layer.

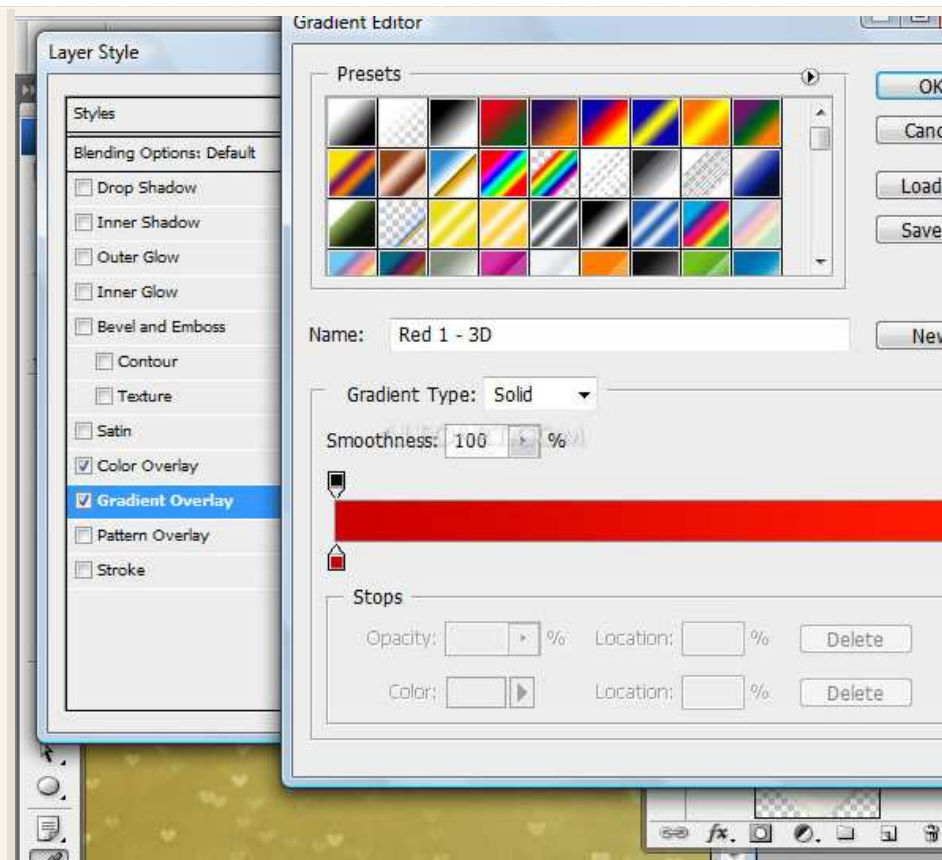


"HAPPY VALENTINE'S DAY CARD. PHOTOSHOP TUTORIAL"

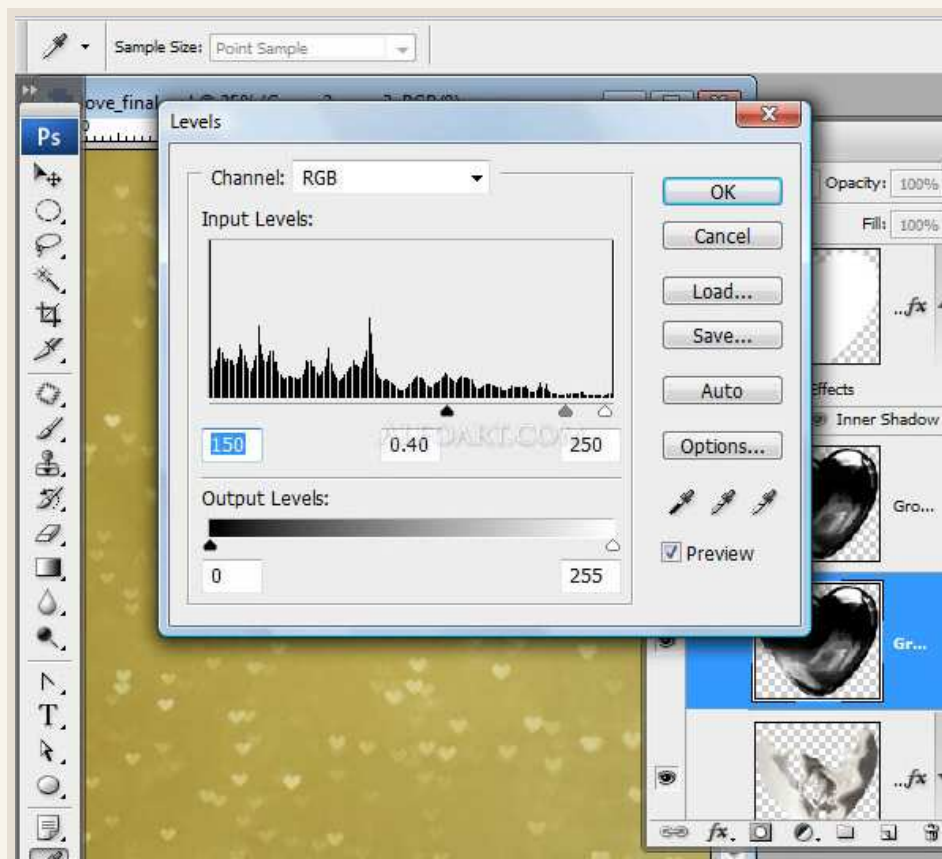
You may get .psd* file of "Happy Valentine's day card." Photoshop tutorial by making a payment. Put the tutorial title in "Add special instructions to seller" line of PayPal and it will be sent to you shortly.

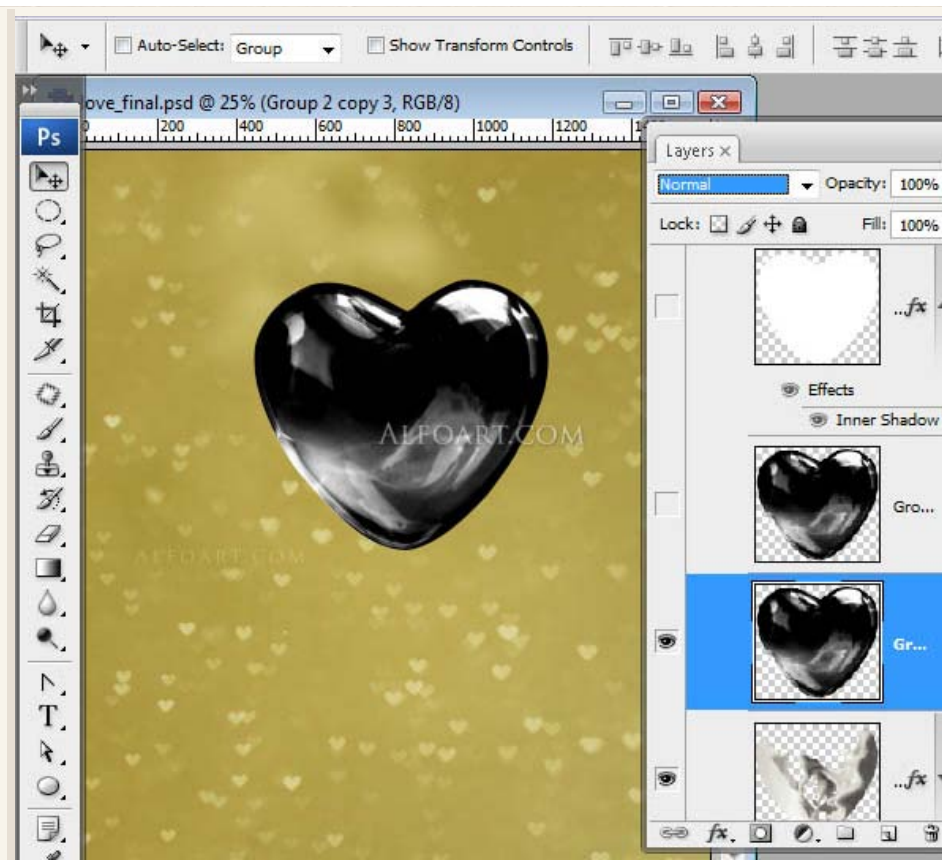
[Buy Now](#)



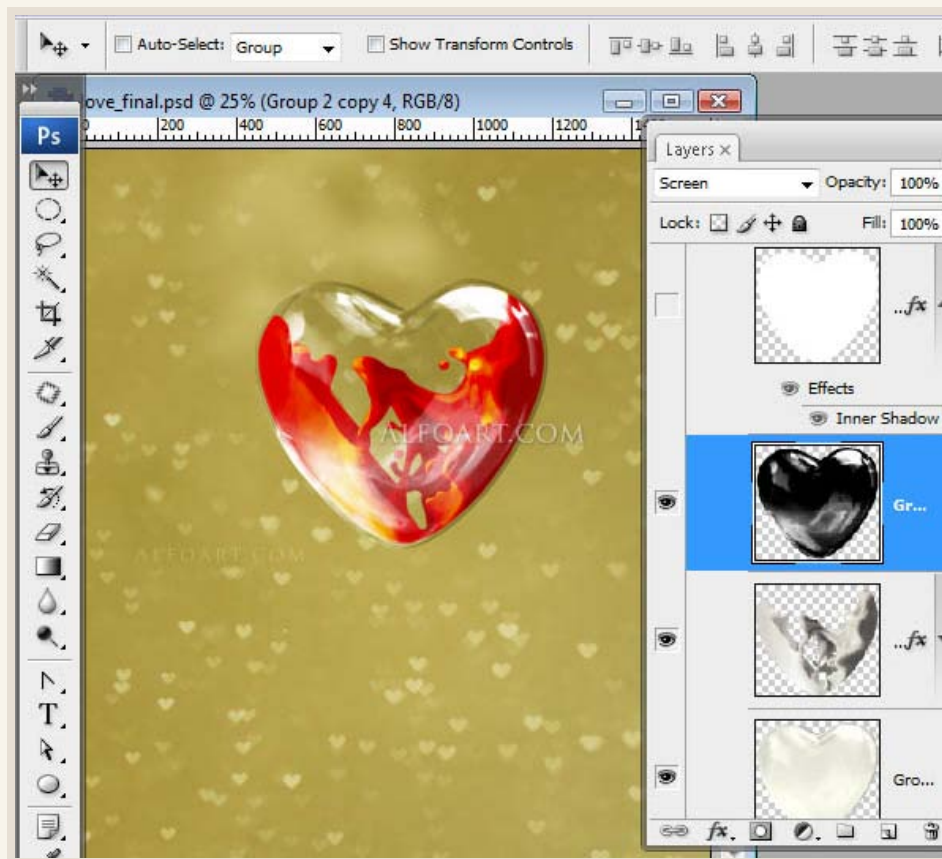


- ✓ Insert Heart image again.
- ✓ Play with levels settings and make heart very dark, but with a few white spots.

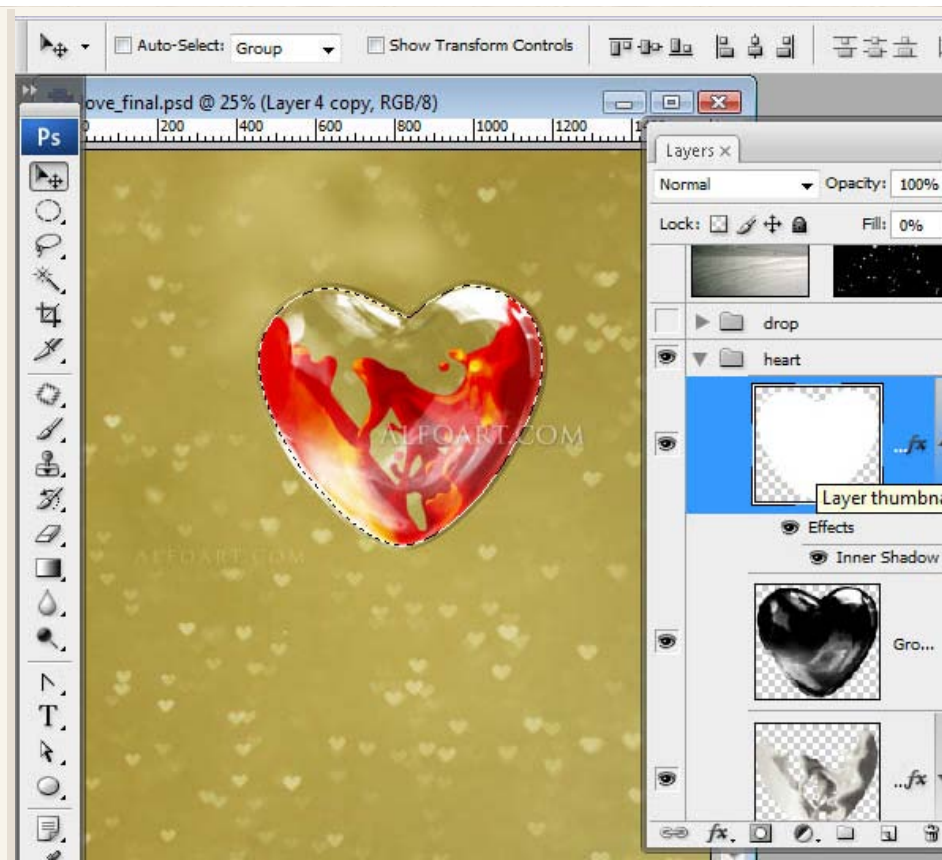




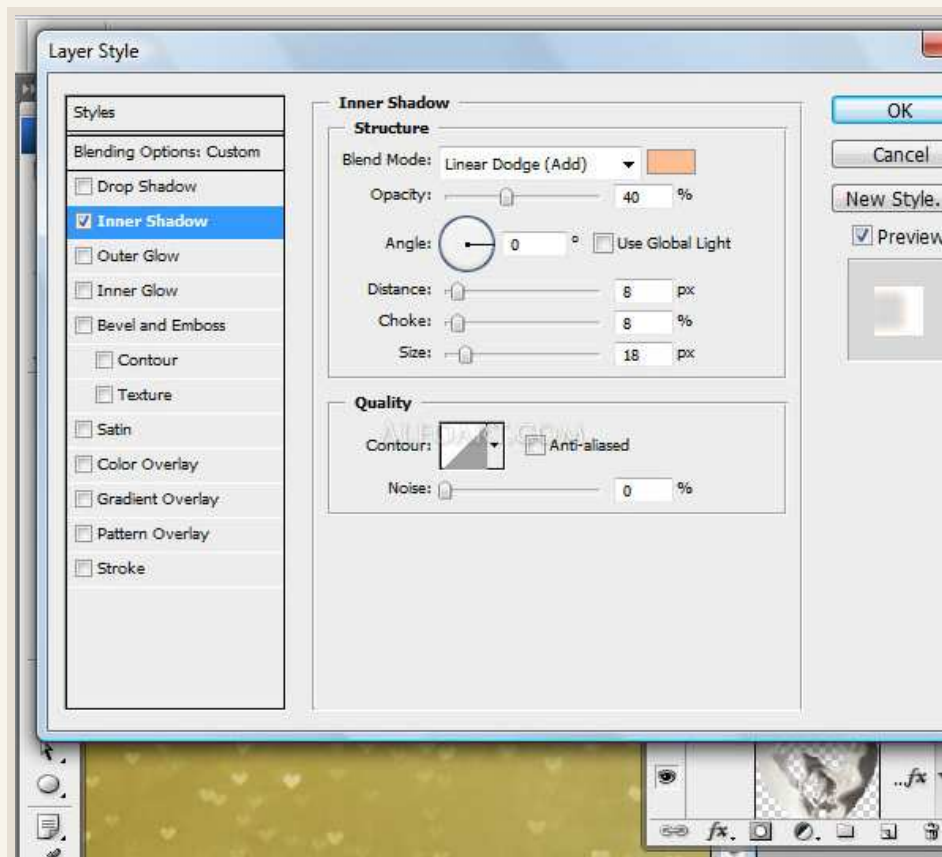
- ✓ Place this layer above liquid image, apply Screen Blending Mode effect.

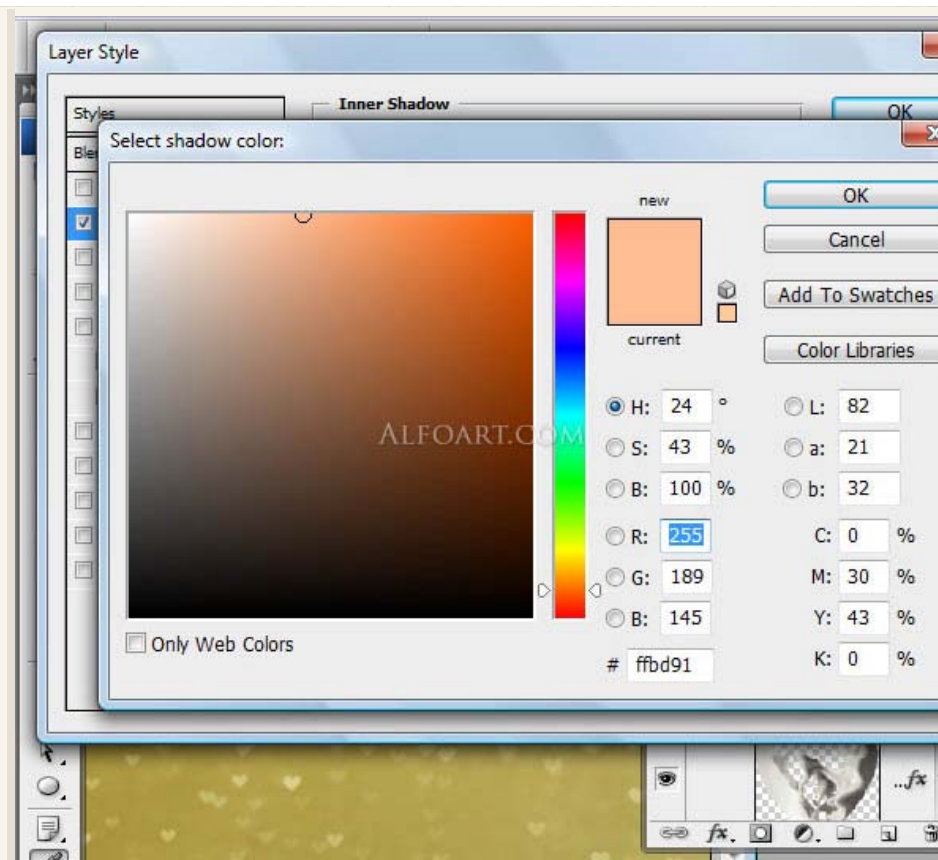


- ✓ Load selection for heart, contract it with 10 px.
- ✓ Create a new layer, fill selected area in a new layer with any color, Fill=0%.
- ✓ Go to Layer Style effects.



- ✓ Apply Inner Shadow effect, just like in the example below.



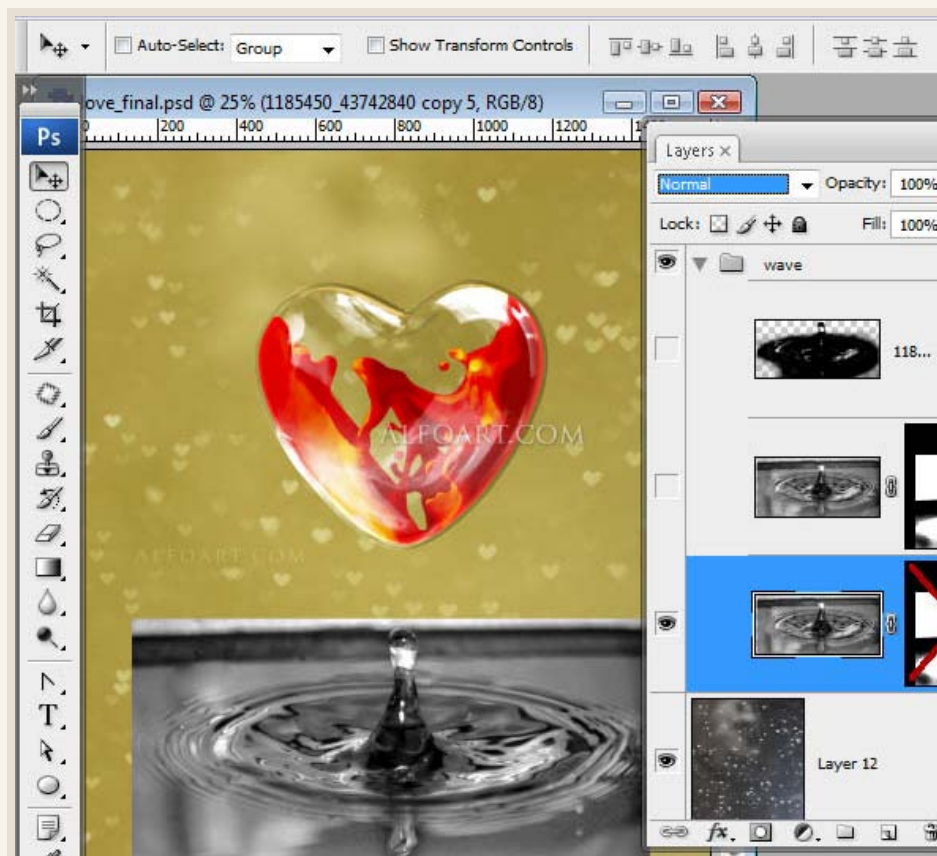


"HAPPY VALENTINE'S DAY CARD. PHOTOSHOP TUTORIAL"

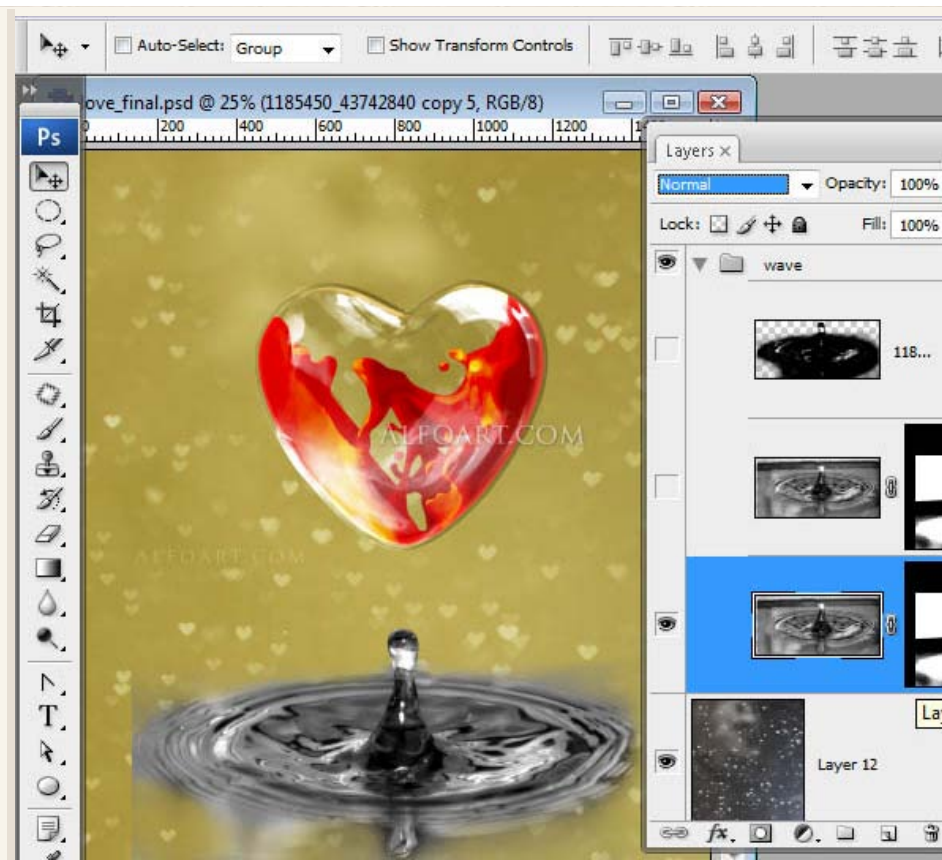
You may get .psd* file of **"Happy Valentine's day card."** Photoshop tutorial by making a payment. Put the tutorial title in "Add special instructions to seller" line of PayPal and it will be sent to you shortly.

[Buy Now](#)

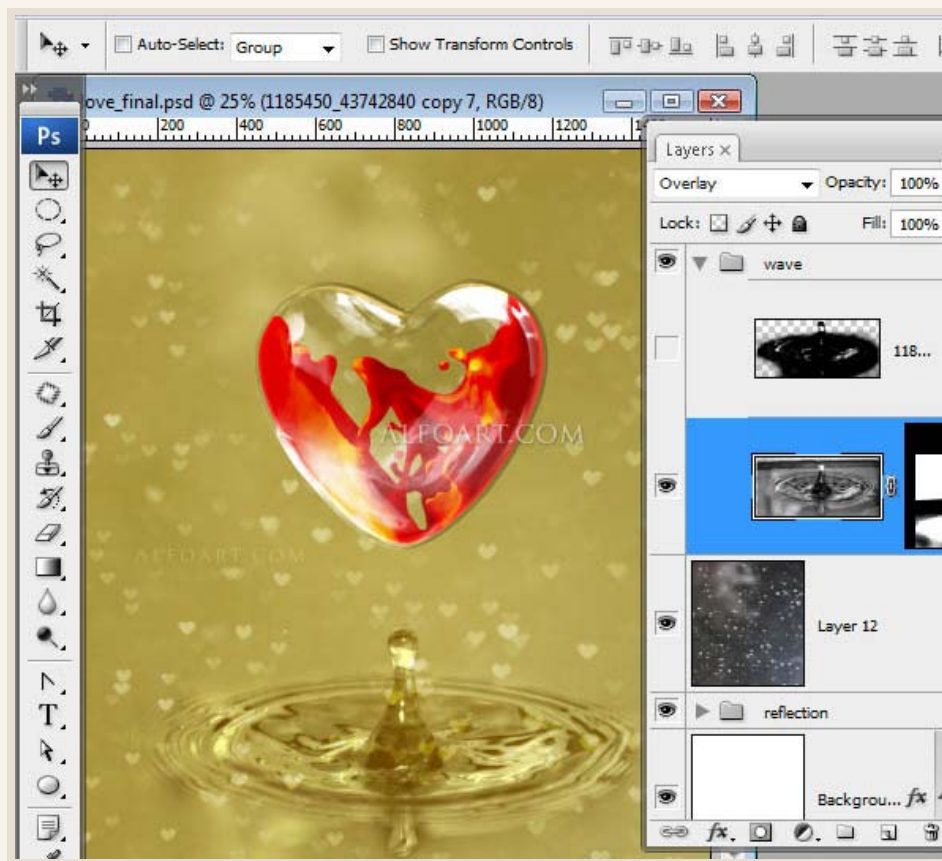
- ✓ Insert water splash image.
- ✓ Make it black & white. Image > Adjustments > Black & White.
- ✓ Apply Auto Contrast.



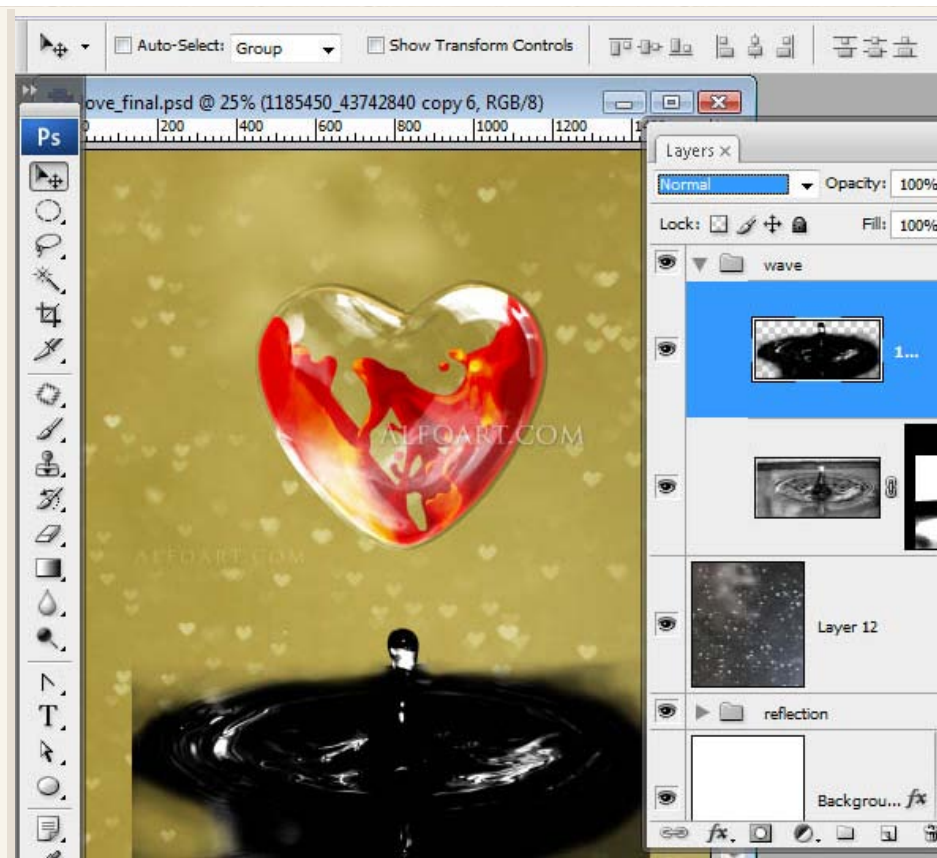
- ✓ Add layer Mask to this layer.
- ✓ Erase some areas using round soft brush.



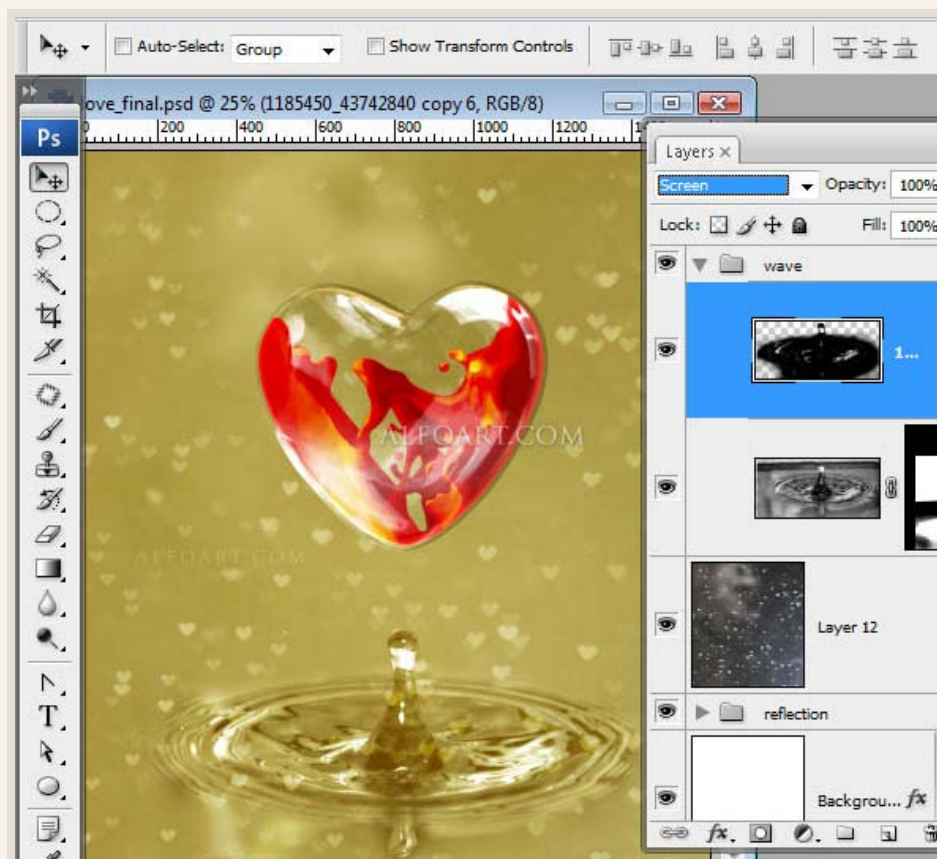
✓



- ✓ Duplicate water layer.
- ✓ Make it dark, just like in the previous example with glass heart.

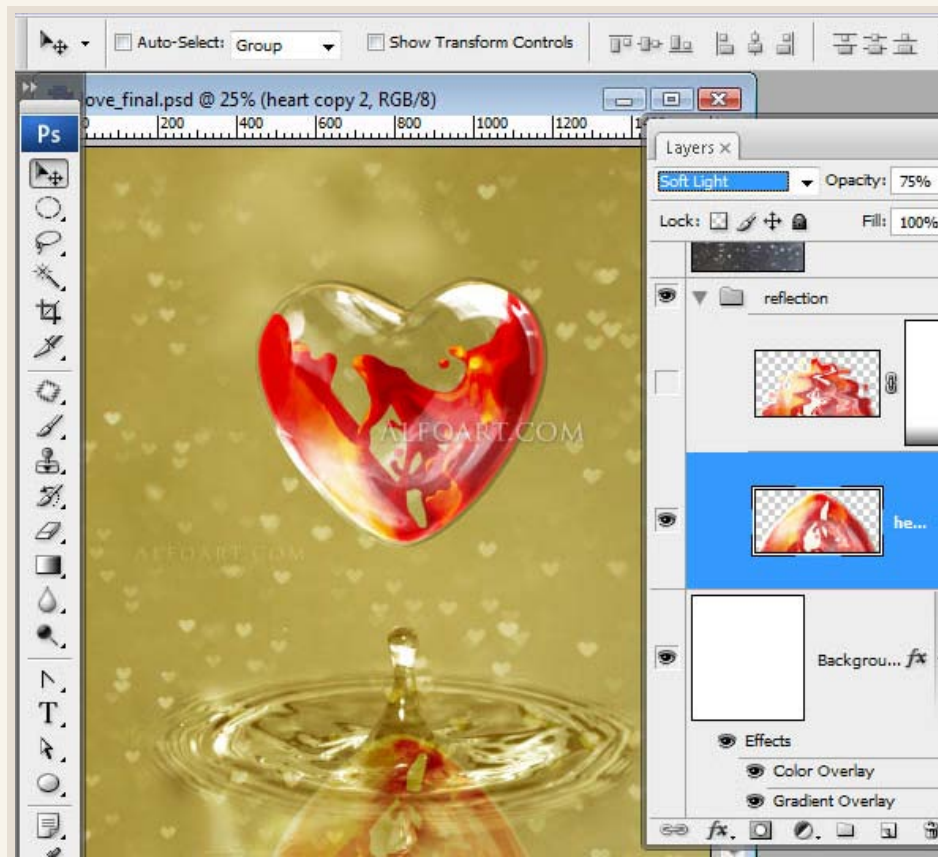


- ✓ Apply Screen Blending Mode effect to created dark image.

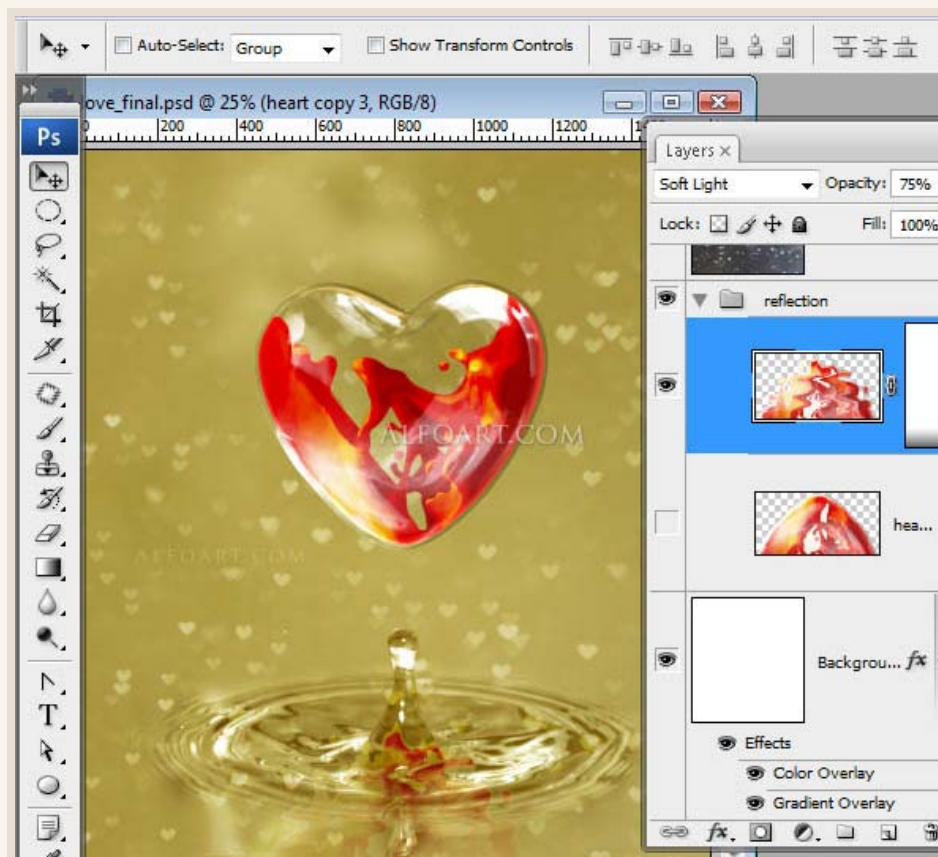


- ✓ Duplicate all heart layers.
- ✓ Merge them.
- ✓ Apply Flip Vertical Transformation. Edit > Transform > Flip Vertical.
- ✓ Move this layer down.

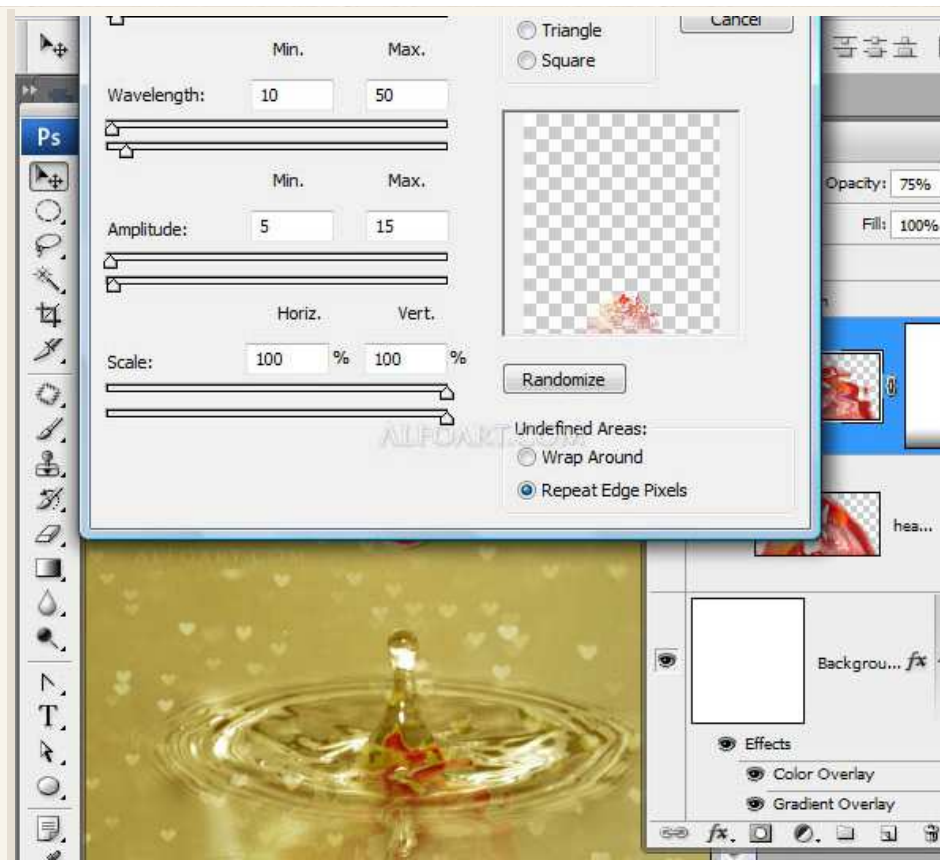
- ✓ Apply Soft Light Blending Mode and Opacity 75%.



- ✓ Go to Filter > Distort > Wave.



- ✓ Apply the following adjustments.





Web Templates

Newest tutorials

Design Tutorials

Photo Effects

Special Effects

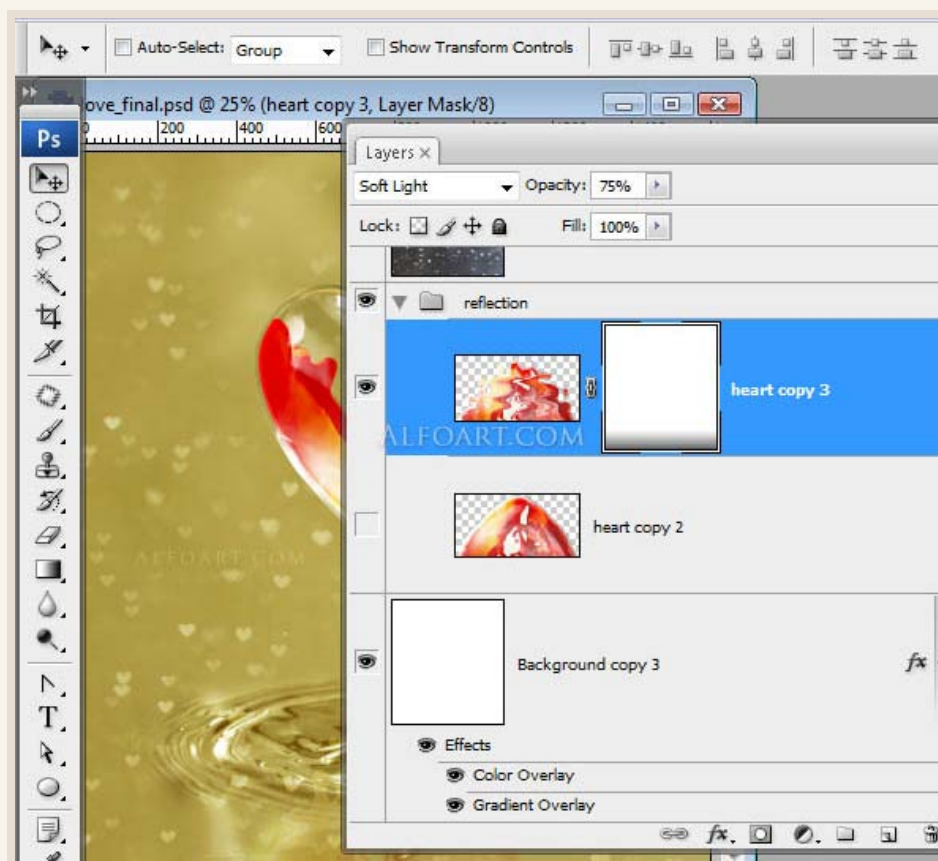
Animals

"HAPPY VALENTINE'S DAY CARD. PHOTOSHOP TUTORIAL"

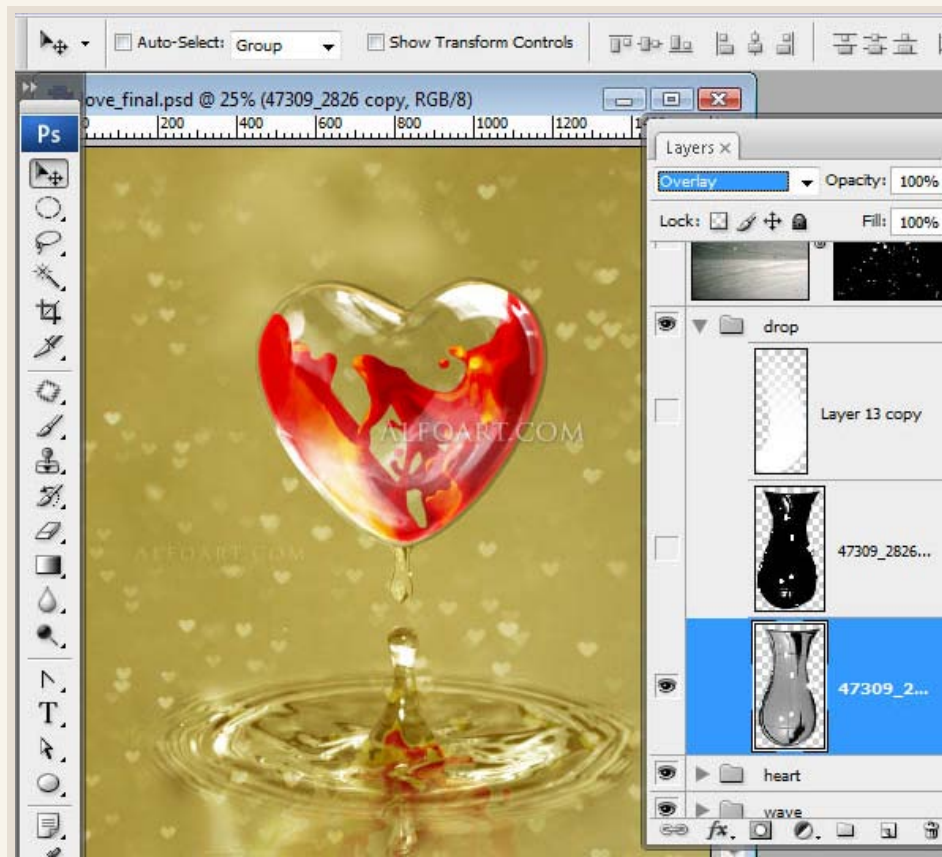
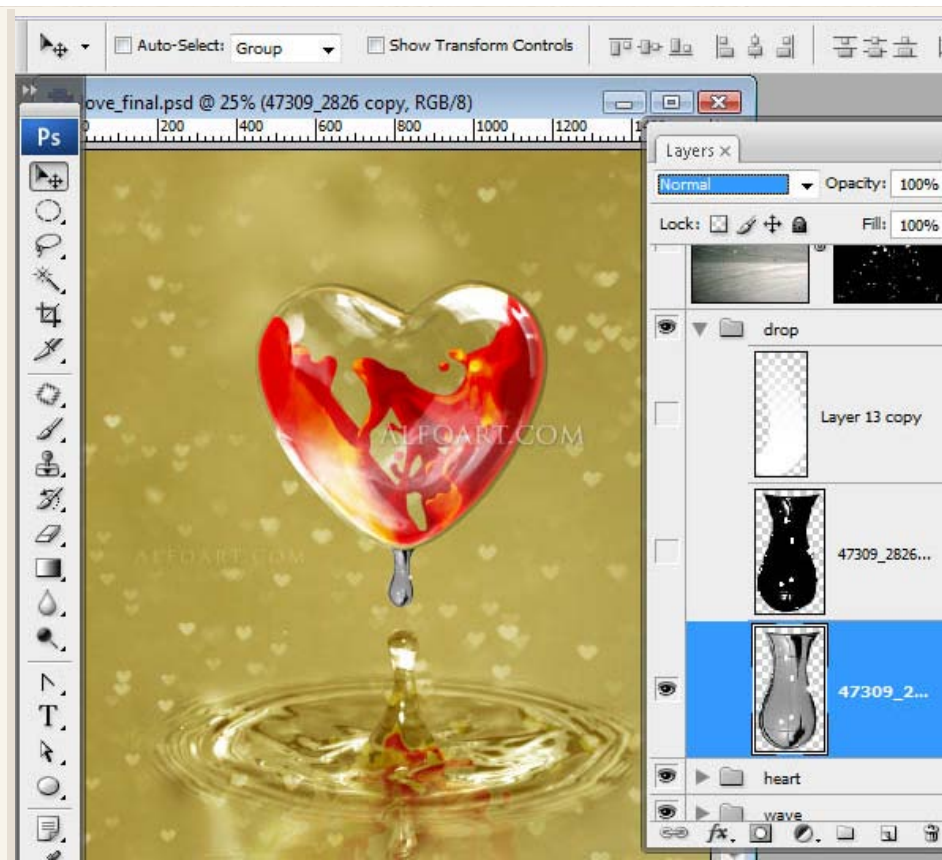
You may get .psd" file of "Happy Valentine's day card." Photoshop tutorial by making a payment. Put the tutorial title in "Add special instructions to seller" line of PayPal and it will be sent to you shortly.

[Buy Now](#)

- ✓ Add layer mask to reflection layer.
- ✓ Fill it with linear black & white gradient, just like on the screen shot.

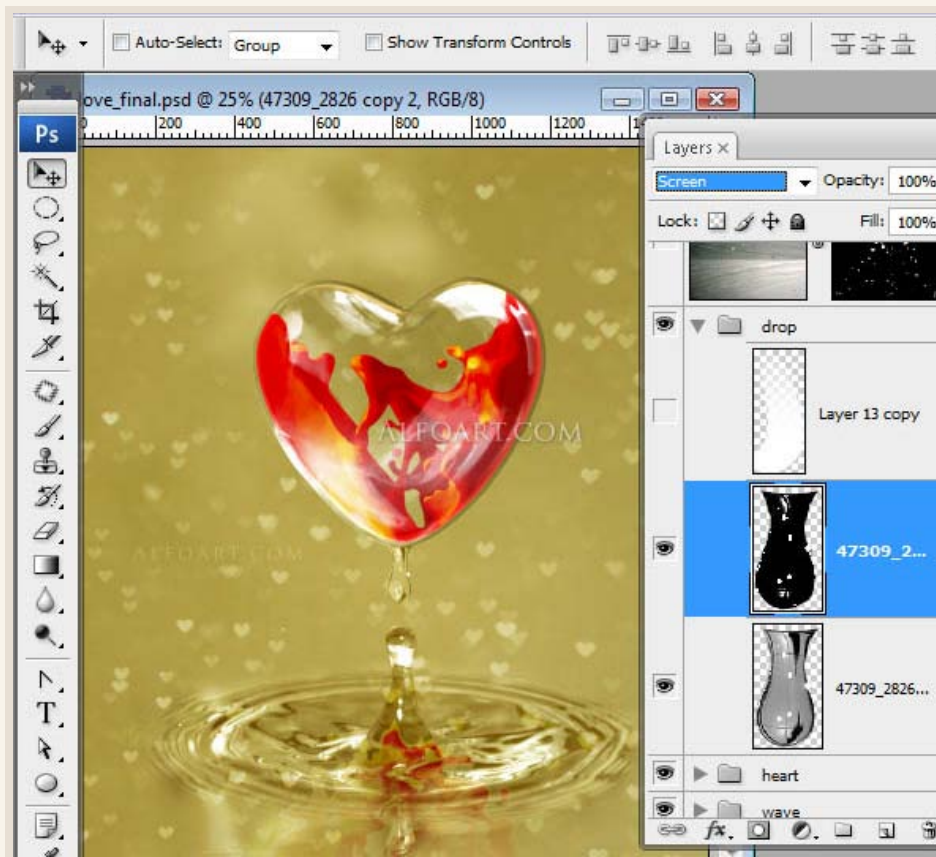
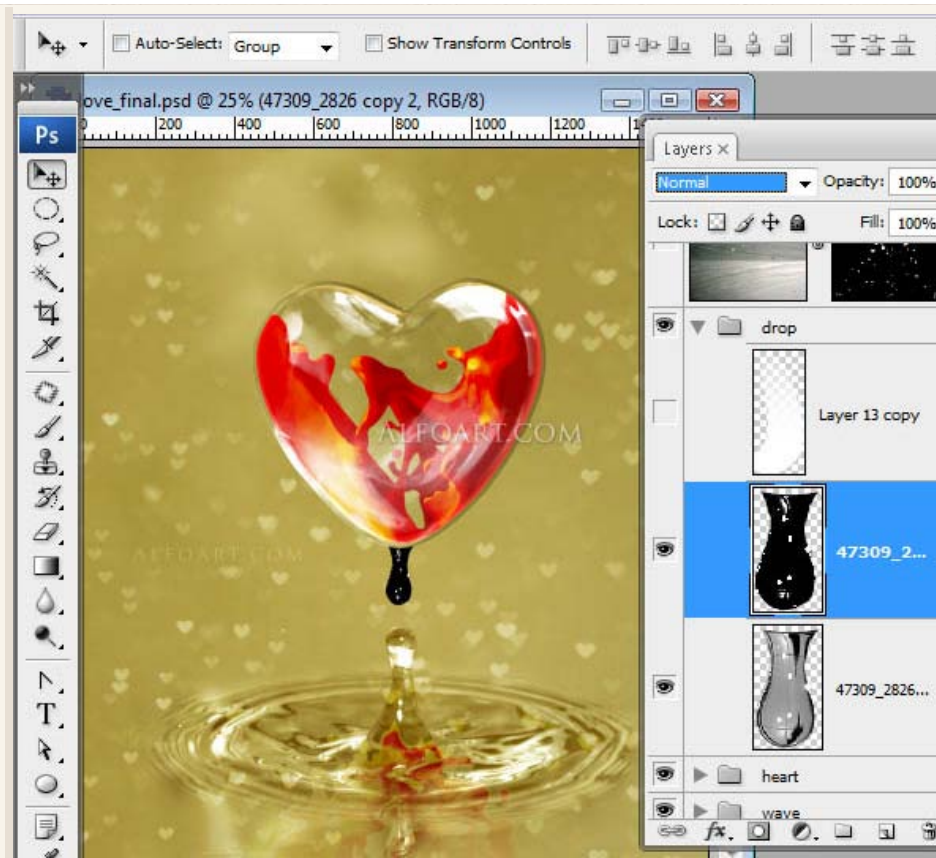


- ✓ Insert water drop image.
- ✓ Apply Overlay Blending Mode to it.

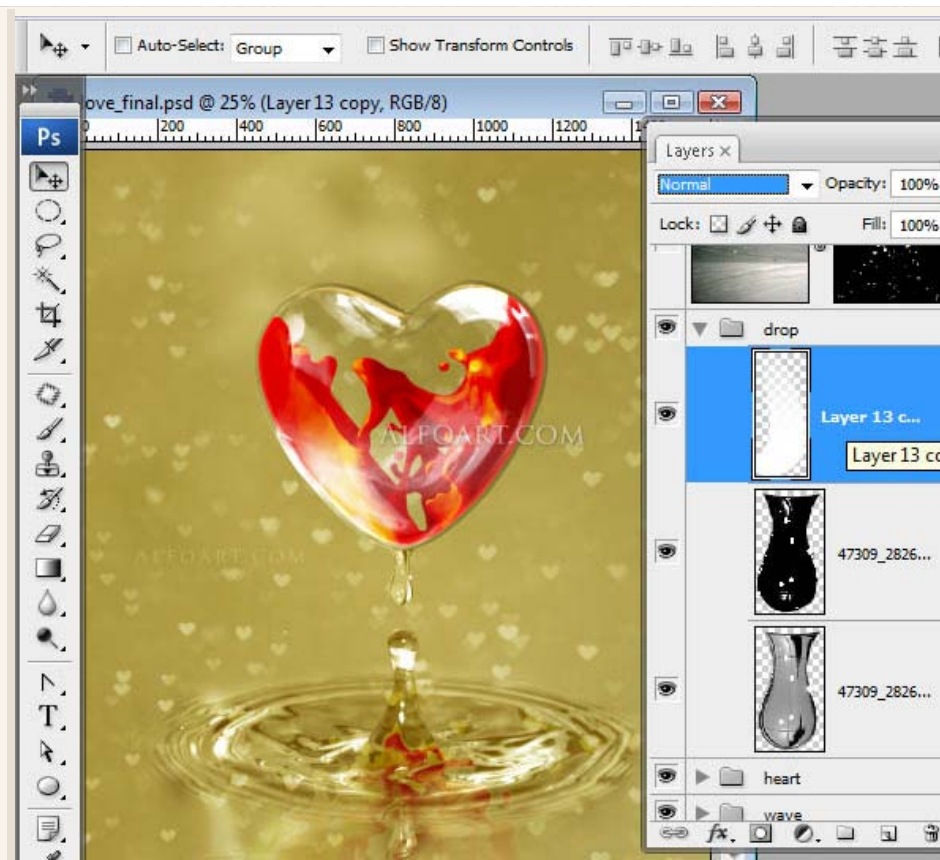


- ✓ Duplicate layer, make it dark and apply Screen Blending Mode to it.

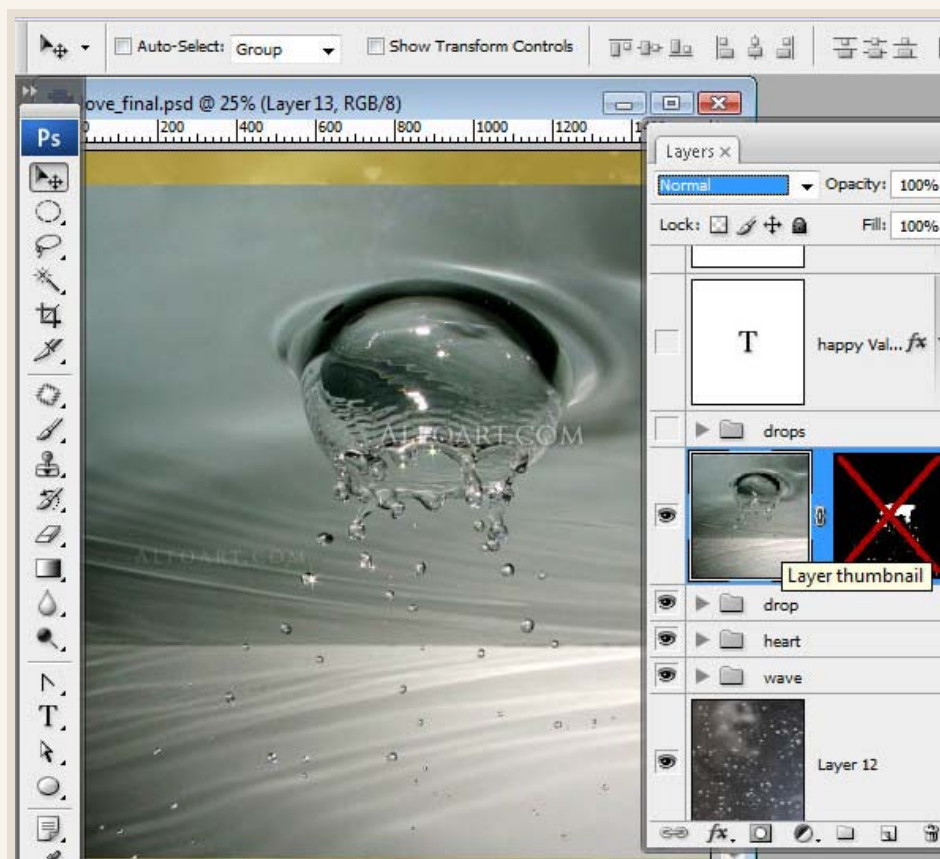
Happy Valentine's day card..Make a nice and creative Christmas card using Adobe Photoshop.



✓ Draw light spot.



✓ Insert another water splash image.

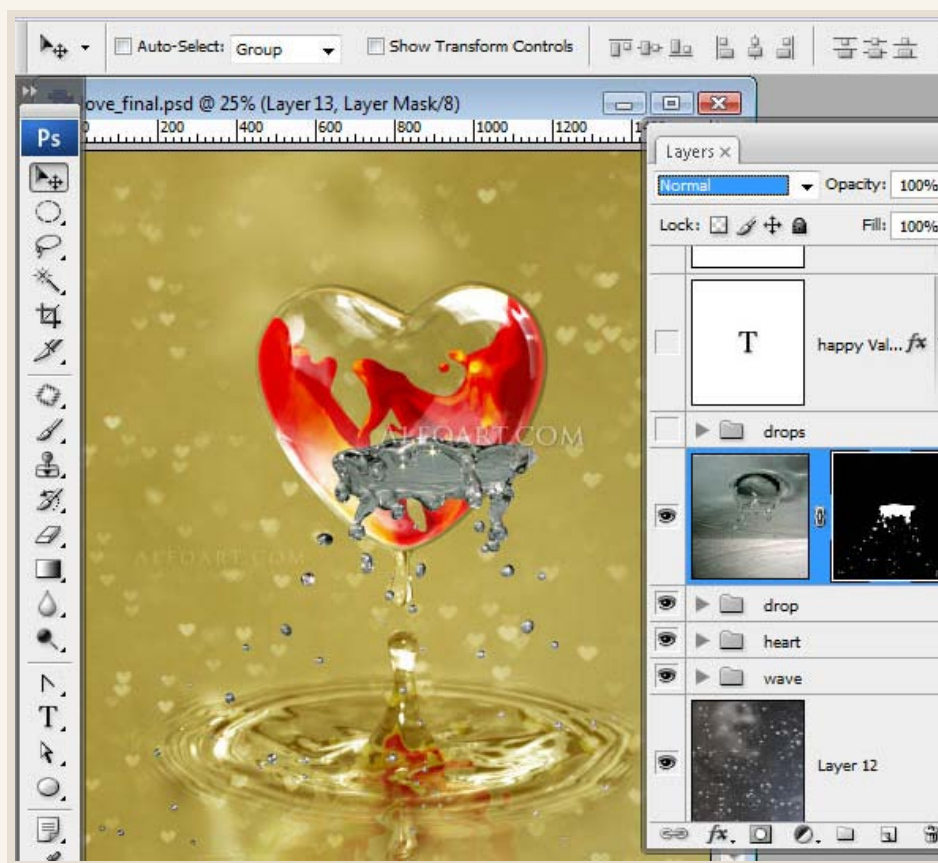


"HAPPY VALENTINE'S DAY CARD. PHOTOSHOP TUTORIAL"

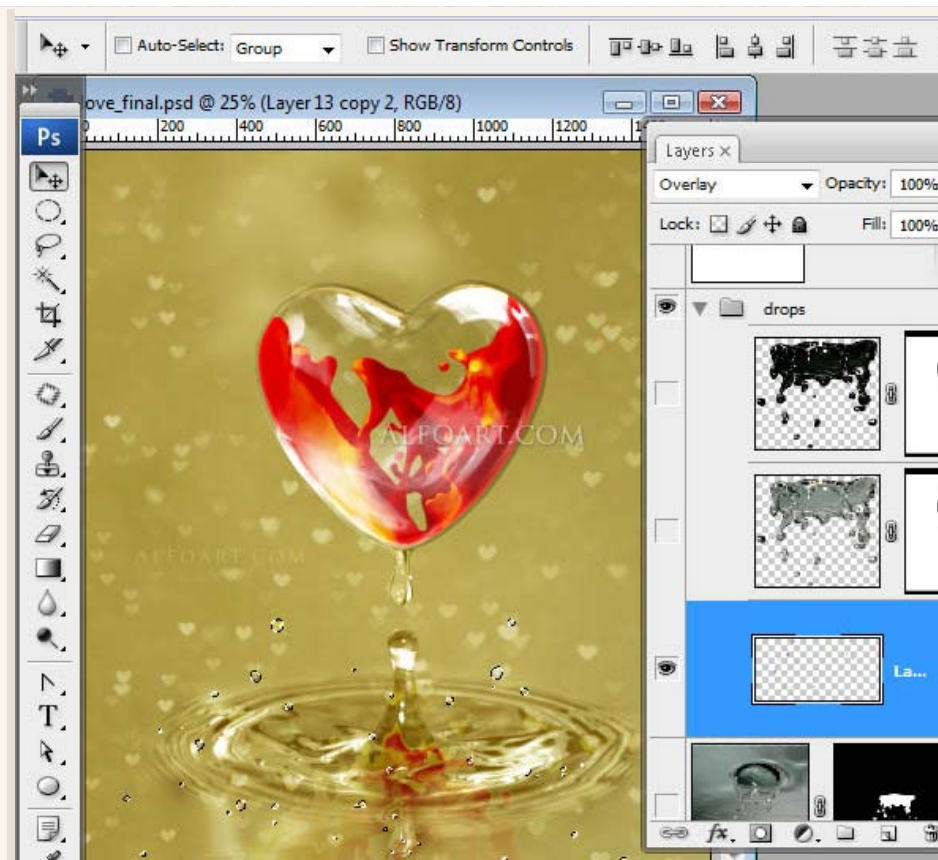
You may get .psd* file of "Happy Valentine's day card." Photoshop tutorial by making a payment. Put the tutorial title in "Add special instructions to seller" line of PayPal and it will be sent to you shortly.

[Buy Now](#)

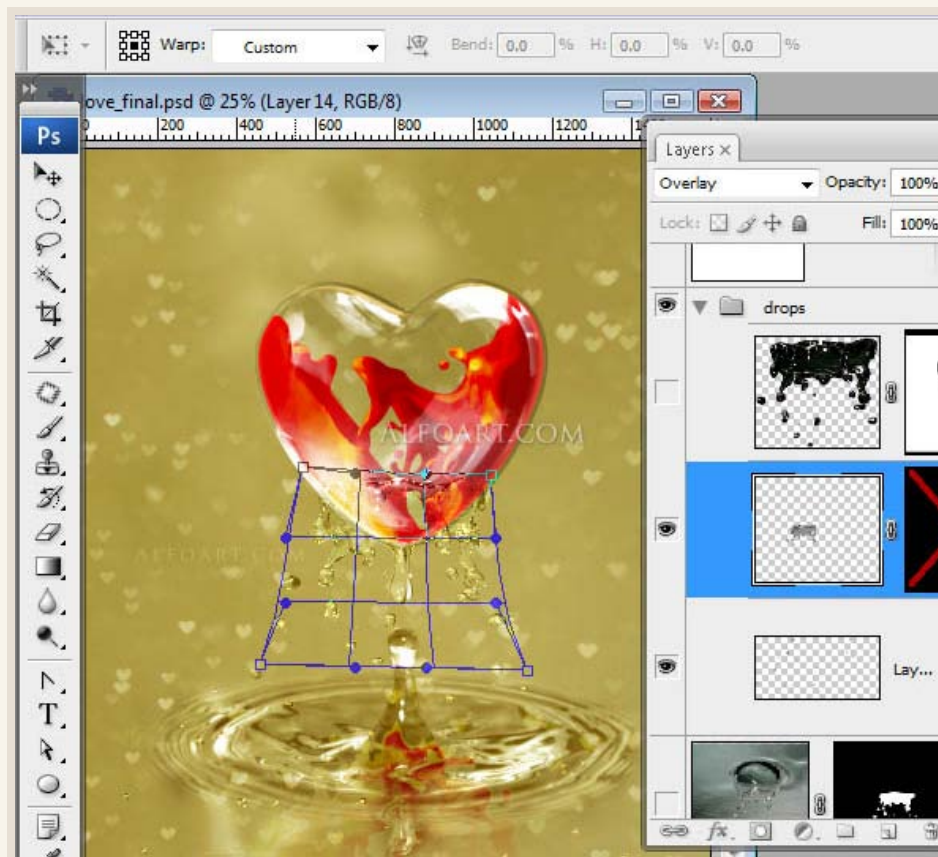
✓ Separate bottom part from background. Use Layer Mask and round brush.



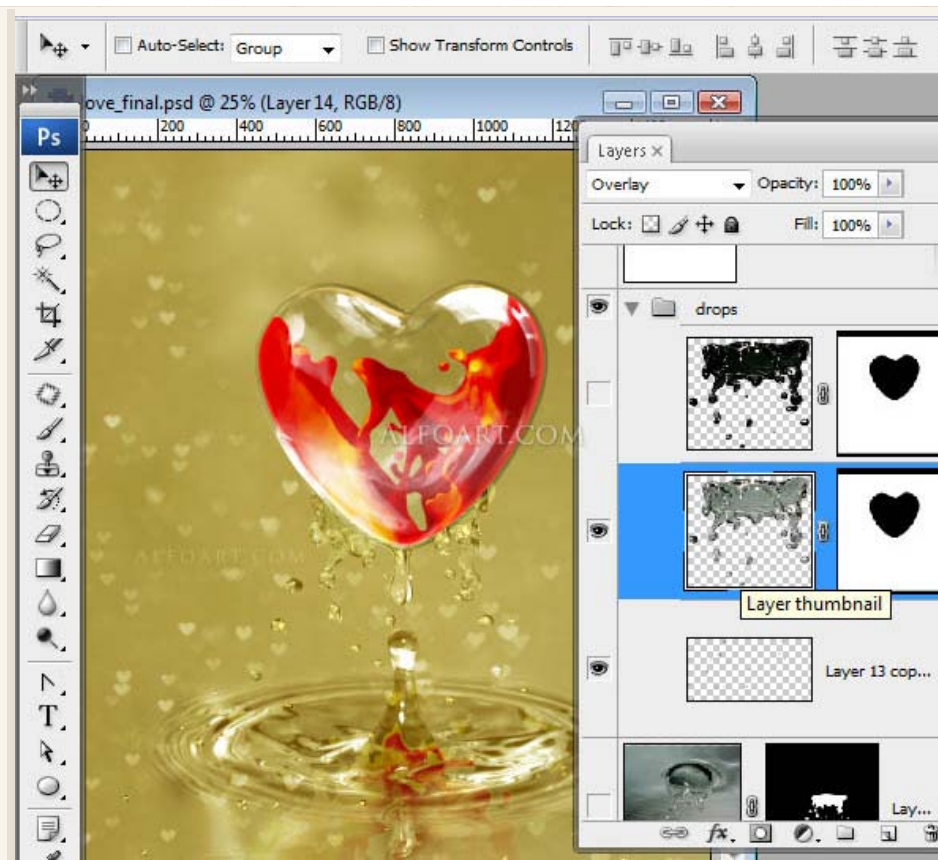
- ✓ Cut top part of water drops and paste it into a new layer.
- ✓ Choose Overlay Blending Mode for bottom part of drops.



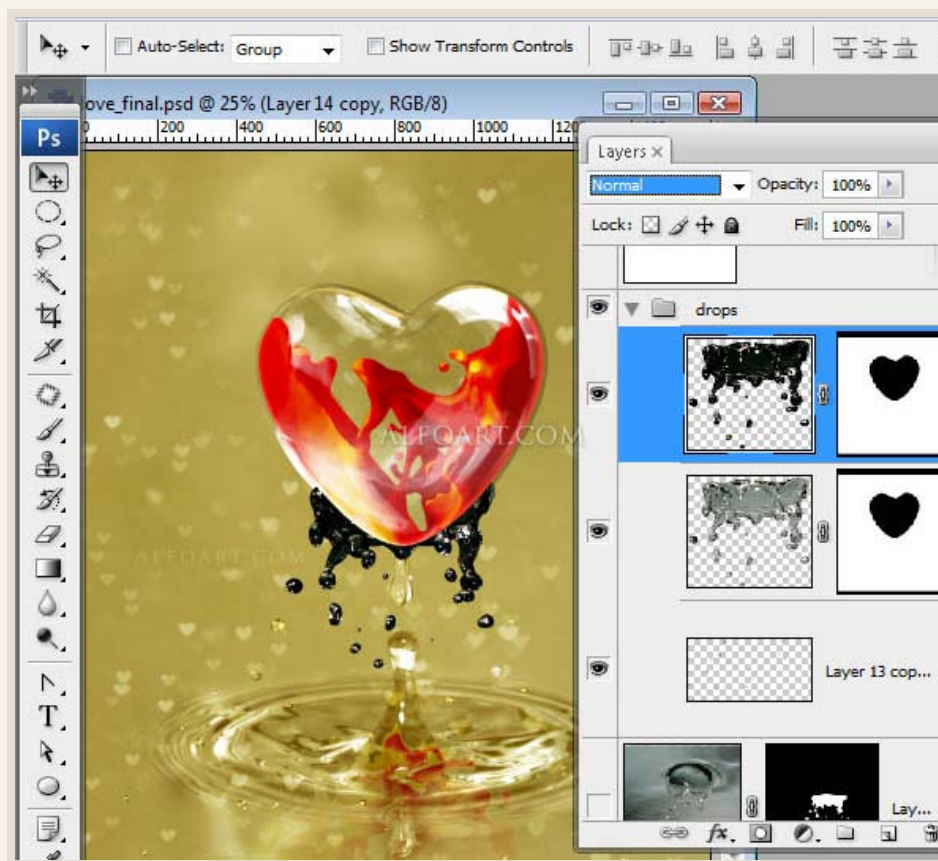
- ✓ Apply Warp Transformation to the top part, it should repeat the form of glass heart.



- ✓ Cut out heart area of the water drops.



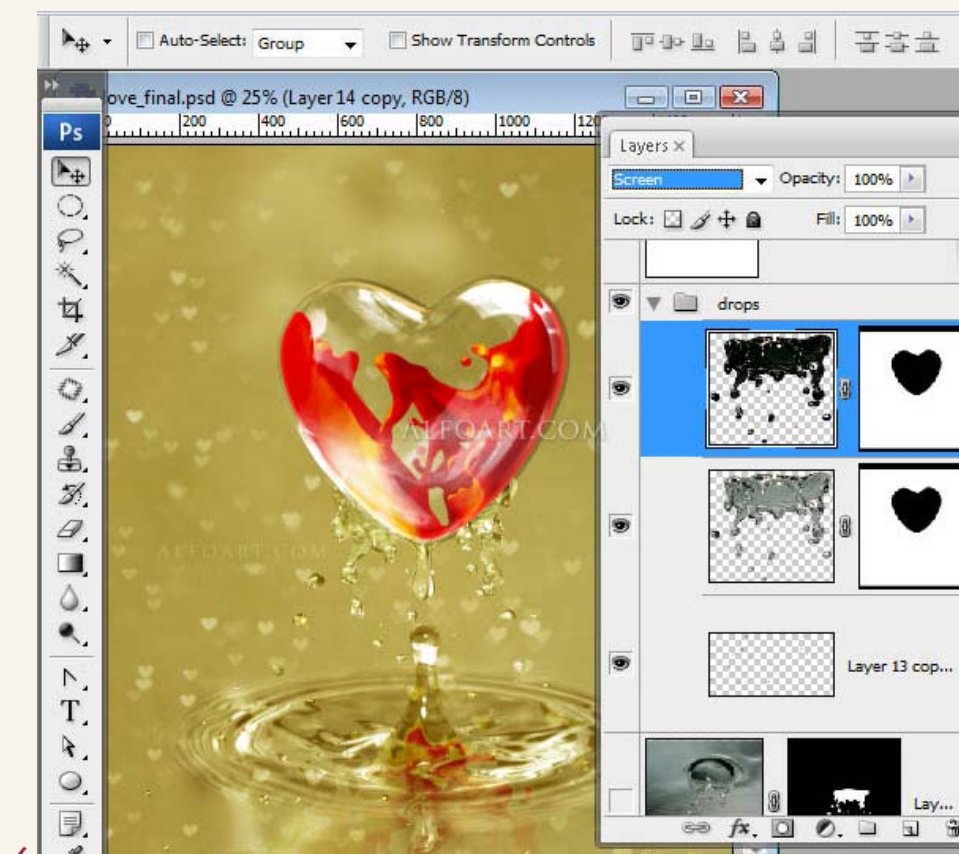
✓ Duplicate water layer, make in dark and apply Screen Blending Mode.



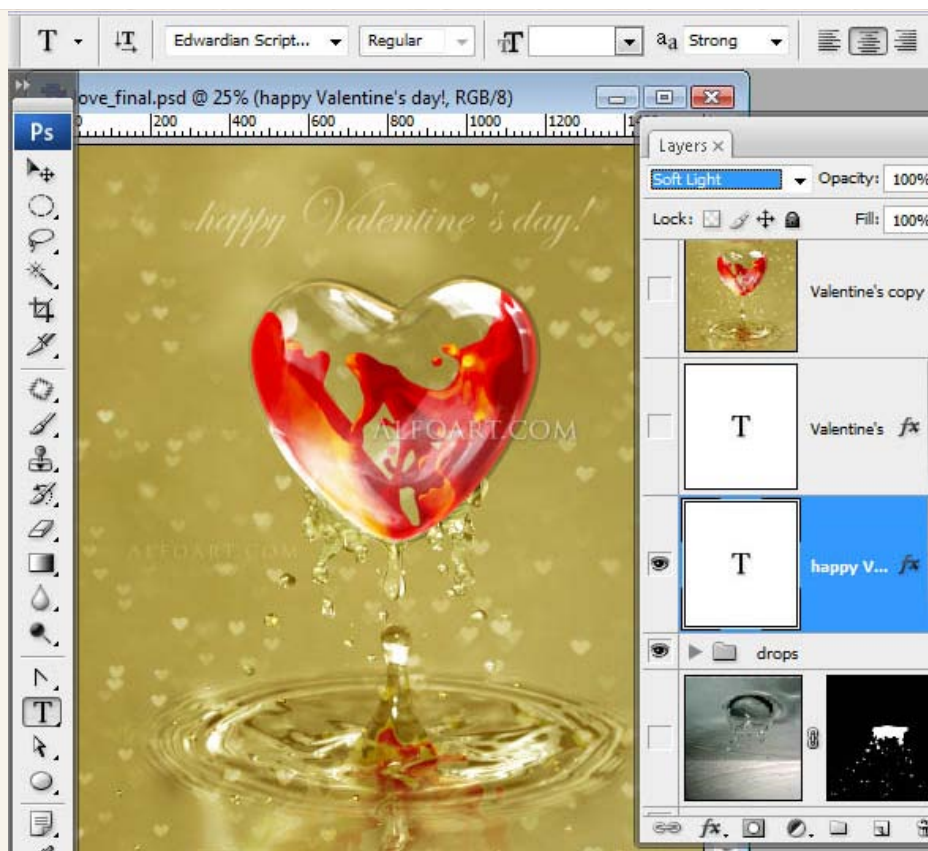
"HAPPY VALENTINE'S DAY CARD. PHOTOSHOP TUTORIAL"

You may get .psd" file of "Happy Valentine's day card." Photoshop tutorial by making a payment. Put the tutorial title in "Add special instructions to seller" line of PayPal and it will be sent to you shortly.

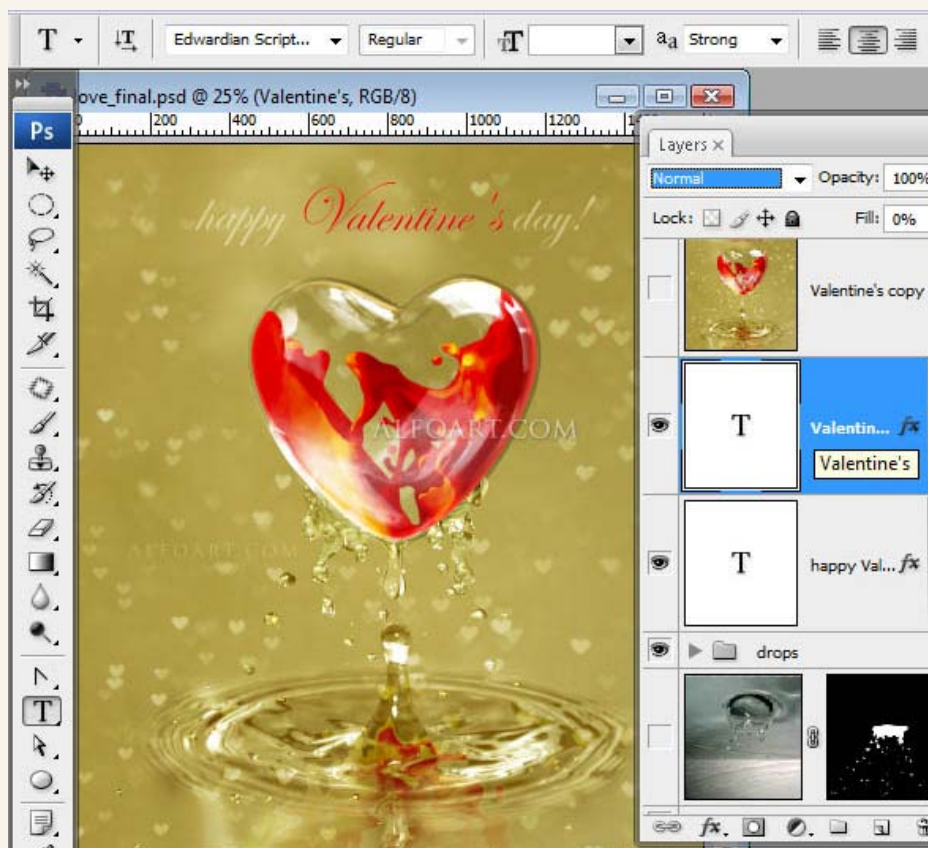
[Buy Now](#)



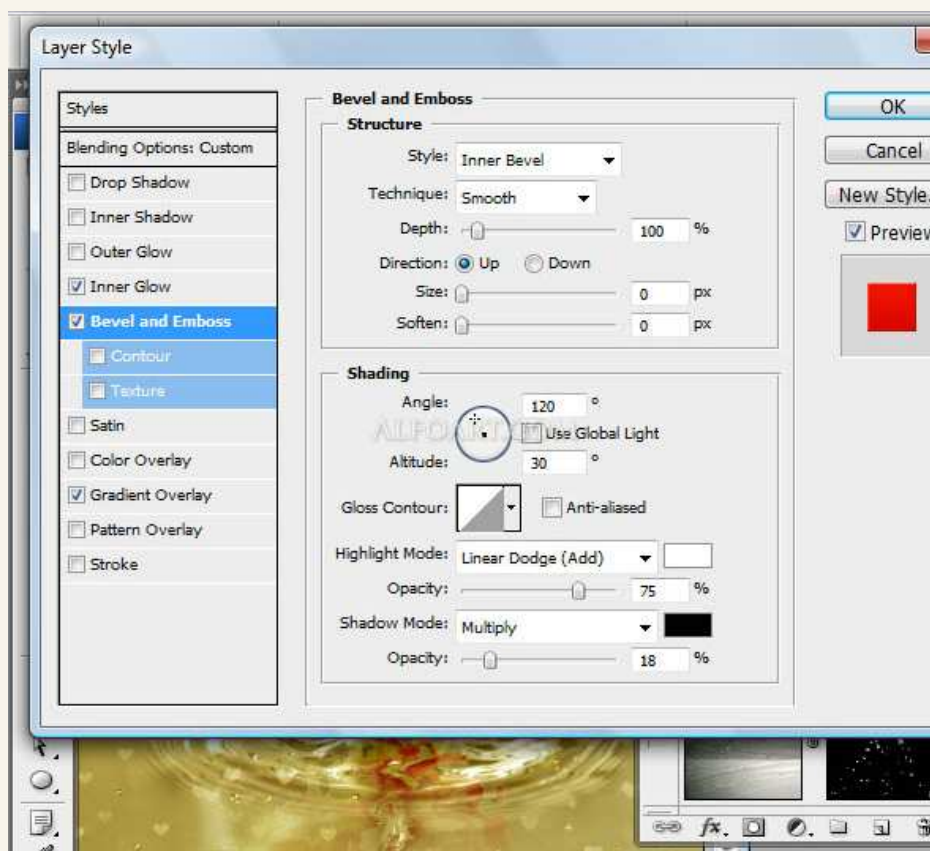
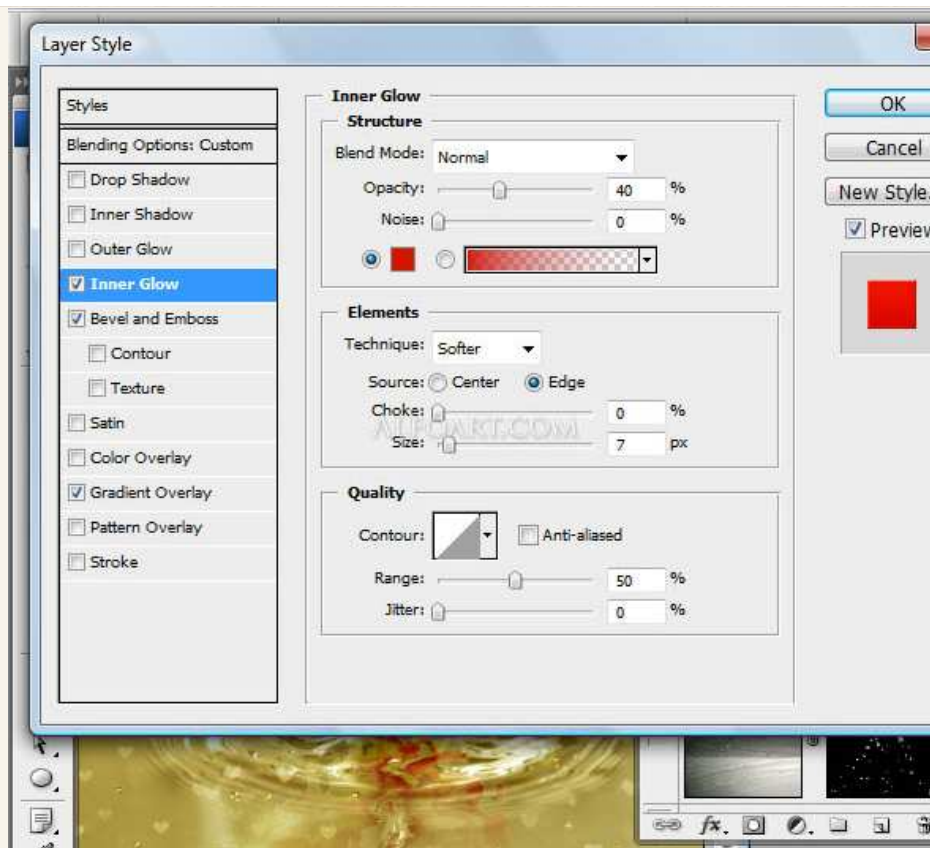
- ✓ You may use Edwardian Script font for text.
- ✓ Apply Soft Light Blending Mode for text layer.



- ✓ Duplicate central word.



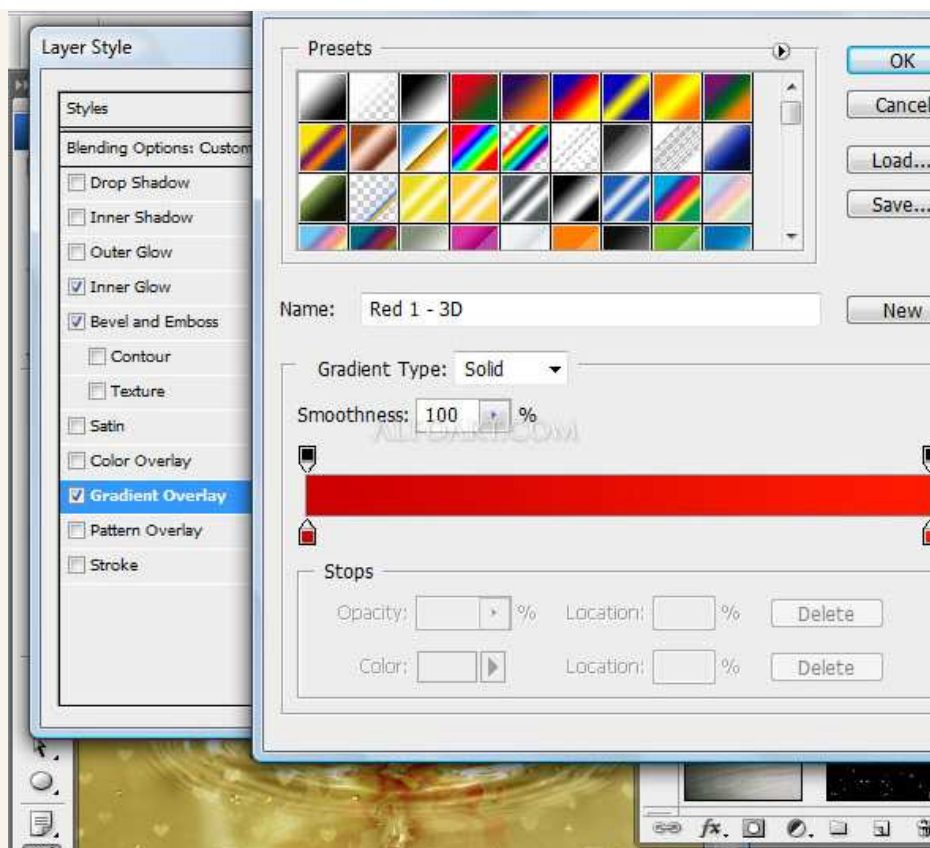
- ✓ Apply layer style effects to it just like on the examples below.



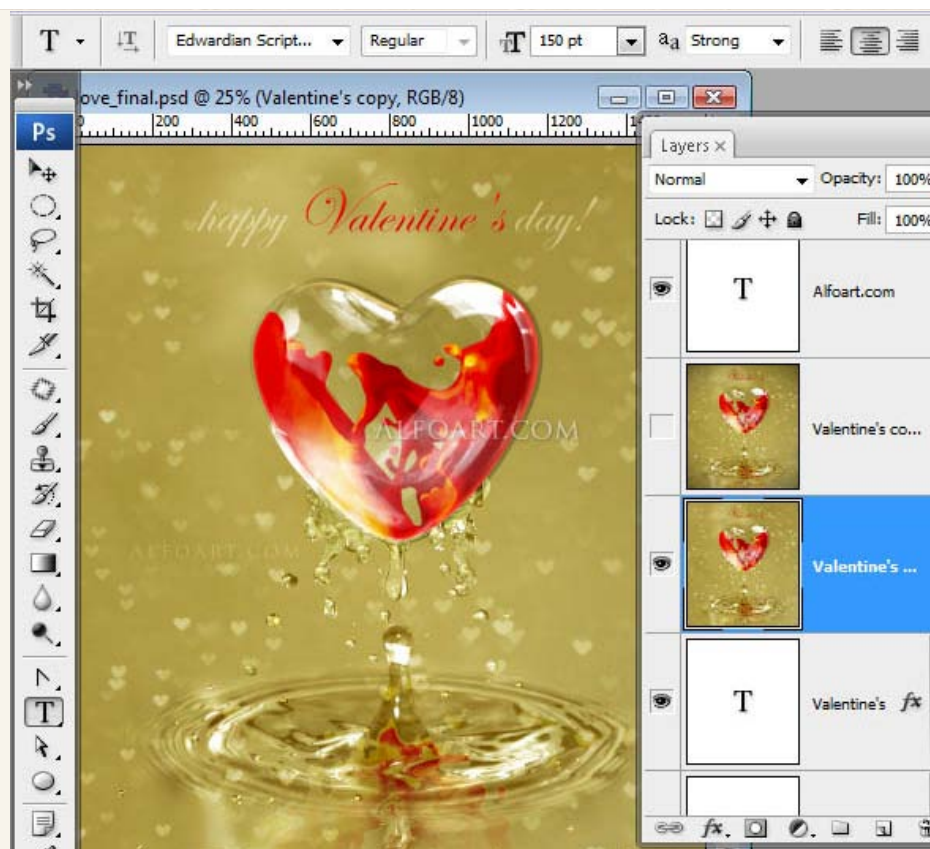
"HAPPY VALENTINE'S DAY CARD. PHOTOSHOP TUTORIAL"

You may get .psd" file of "Happy Valentine's day card." Photoshop tutorial by making a payment. Put the tutorial title in "Add special instructions to seller" line of PayPal and it will be sent to you shortly.

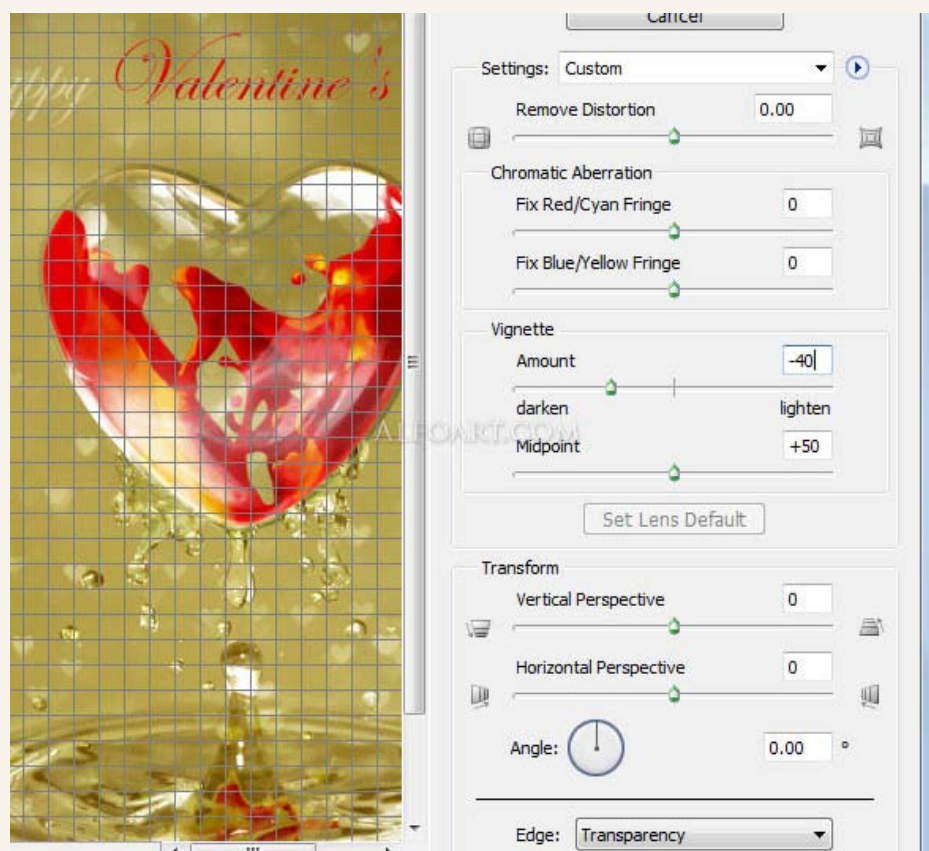
[Buy Now](#)



✓ Merge all layers.



- ✓ Go to Filter > Distort > Lens Correction.
- ✓ Apply Darken Vignette.



And here is result. Click for larger view!



Pages: [1](#) | [2](#) | [3](#) | [4](#) | [5](#) | [6](#) | [7](#)