

FRONT VIEW

- NOTES:**
1. Recommended Box-out 5 3/4 (145) x 5 3/4(145).
 2. All Jay R. Smith hydrants are manufactured with "NO-LEAD" brazing rings and USDA approved lubricants.
 3. The AB1953, California Lead Law, and NSF/ANSI Standard 61-2008 - Drinking Water System Components are not applicable to Jay R. Smith hydrants as they do not convey/dispense water for human consumption through drinking or cooking.
 4. Dimensions shown in parentheses are in millimeters.
 5. **FOR IRRIGATION PURPOSES ONLY.**

B(Depth of Bury) = 02(610), 03(915), 04(1220), 05(1525), 06(1830), 07(2135) or 08(2438) Feet

*B = 9 1/2"(240) When Specified 5810-SAP

*B = 9 1/2"(240) When Specified 5811-SAP

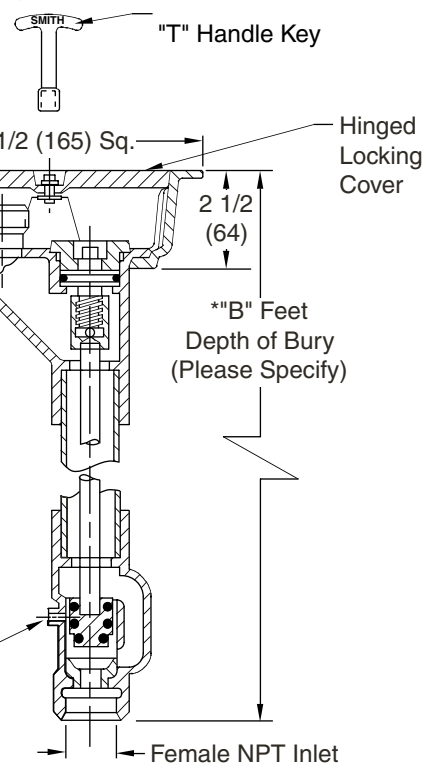
REGULARLY FURNISHED:

Bronze Non-Freeze Ground Hydrant with "T" Handle Key, and Bronze Hydrant Box. Inlet Size Furnished as Indicated by Figure Number Selected.



VARIATIONS:

- 1"(25) Hose Connection Adaptor -HC1
 Less Drain Hole -LD
 1/8"(3) NPT Drain Hole in Box -N
 1/8"(3) NPT Drain Hole in Valve
 Housing -NV
 Mild Climate -SAP
 "Water" Cast on Cover -W



☐ Fig. 5810... 3/4"(19) INLET
☐ Fig. 5811... 1"(25) INLET

OPTIONAL MATERIALS:

- | | |
|---|-------------------------|
| 1 | Nickel Bronze Box -NB |
| | Polished Bronze Box -PB |

TECHNICAL DATA

Non-Freeze Ground Hydrants are supplied with a special valve housing which prevents freezing of hydrant during non-use periods. The valve housing must be installed below the frost line which prevails for the area of installation. The valve housing has a drain hole which drains the casing when the hydrant is shut off. In effect, there is no water in the casing during non-use periods. Since water from the drain hole is normally allowed to drain into the ground, the valve housing should be set in a bed of gravel. Water drained from the casing can then seep into the ground.

Some locations which require Non-Freeze Ground Hydrants cannot tolerate water draining from the drain hole. Examples are parking garages, plazas and roof decks used for recreational purposes. Often in these types of applications the valve housing will protrude into a finished area which is not subject to freezing temperatures. To eliminate the problem of water drainage in this type of installation, Smith can supply a tapped drain hole in the hydrant box and a tapped drain hole in the valve housing. Through these tapped drain holes, water accumulation in the box and the water from the valve housing drain hole can be piped to a suitable drain.

P N M L	2-4-13 6-13-11 5-17-11 10-7-09	Revised Notes Revised Note Added Note Revised Notes	TBW TBW TBW RN	CL CL CL CL	WEIGHT POUNDS	VOLUME CUBIC FEET	FIGURE NUMBER 5810,5811-CAN
REV.	DATE	DESCRIPTION	BY	CKD. BY			

