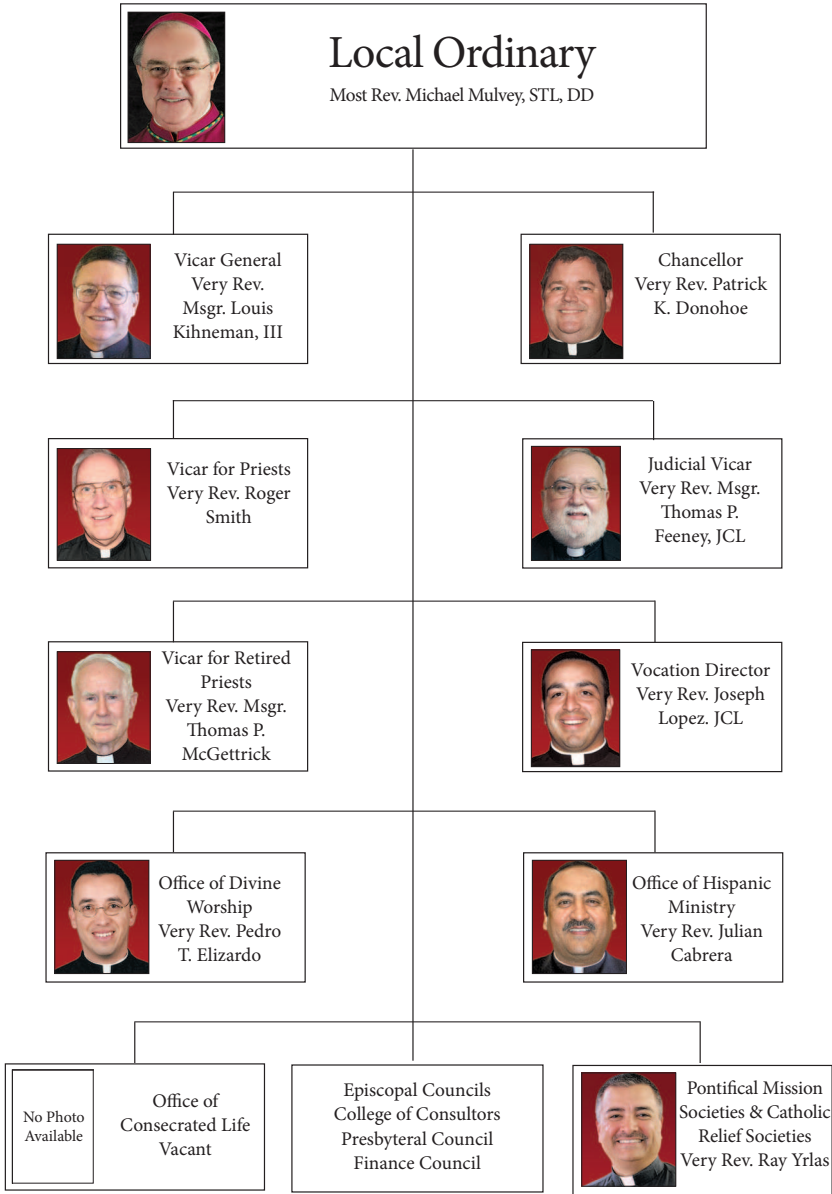


# Organizational Structure

# Office of the Bishop



Very Rev. Msgr. Louis Kihneman, III serves as Vicar General and Moderator of the Curia. Msgr. Kihneman oversees the day-to-day operations of diocesan offices and councils. Very Rev. Patrick Donohoe serves as Chancellor. Very Rev. Msgr. Thomas P. Feeney, JCL serves as Judicial Vicar.

Very Rev. Joseph Lopez, JCL directs the Vocation Office. Very Rev. Msgr. Roger Smith serves as Vicar for Priests and watches over the priest personnel board and the Office of Permanent Diaconate. Very Rev. Msgr. Thomas McGettrick serves as the Episcopal Vicar for Retired Priests. Very Rev. Pedro Elizardo, Jr. heads the Office of Divine Worship. Very Rev. Julian Cabrera directs the Office of Hispanic Ministry. Very Rev. Ray Yrlas is coordinator of the Pontifical Mission Societies and Catholic Relief Services.

David Campa serves as Vice Chancellor/In-House Counsel. Ben Nguyen serves as Canonical Counsel and Theological Advisor, Nancy Aleman is Bishop Mulvey's Executive Assistant. Monica Gatlin is Administrative Assistant for the Vicar General, Chancellor, Vice Chancellor/In-House Counsel and Vicar for Priests.

## Chancery

Bishop Mulvey and most personnel in his office are located at the Chancery. The following is the contact information for the Chancery:

Street Address: 620 Lipan, Corpus Christi, Texas 78401

Mailing Address: PO Box 2620, Corpus Christi, Texas 78403-2620

Telephone: (361) 882-6191

Fax: (361) 882-1018

Web site: [www.diocesecc.org](http://www.diocesecc.org)

E-mail: [chancery@diocesecc.org](mailto:chancery@diocesecc.org)

Office hours for the Chancery are Monday-Friday 8:30 a.m.- 5 p.m.

## Vicar General

Very Rev. Msgr. Louis Kihneman III, VG

## Chancellor

Very Rev. Patrick K. Donohoe

### *Vice Chancellor/In-House Counsel*

David Campa

## Vicar for Priests

Very Rev. Msgr. Roger Smith

### *Permanent Diaconate*

Deacon Michael Mantz, Director

Located at:

1200 Lantana, Kolbe Center

Corpus Christi, Texas 78407

Telephone: (361) 289-2343

Fax: (361) 289-2454

E-mail: [diaconate@diocesecc.org](mailto:diaconate@diocesecc.org)

Elva Mantz, Secretary

## Episcopal Vicar for Retired Priests

Very Rev. Msgr. Thomas P. McGettrick

## Judicial Vicar

Very Rev. Msgr. Thomas P. Feeney, JCL

Belinda Barragan, Administrative Assistant

Olga Rodriguez, Secretary

Judges:

Rev. Msgr. Mark Chamberlain

Rev. Msgr. Michael Howell

Rev. Joseph A. Lopez, JCL

Rev. Msgr. Leonard Pivonka, JCD

Very Rev. Msgr. Roger Smith

Defenders of the Bond:

Rev. Msgr. Richard J. Shirley, PA, VE

Rev. Angel Montana, JCL

## Office of Divine Worship

Very Rev. Pedro Elizardo, Jr.

Ben Nguyen, Canonical Counsel and Theological Advisor

### *Liturgical Commission*

#### *Sacred Music*

Lee Gwodz, Diocesan Director of Music and Master Organist

Rachael Vasquez, Administrative Assistant

### **Office of Consecrated Life**

Vacant, Director

Edith Balderas, Administrative Assistant

### **Office of Hispanic Ministry**

Very Rev. Julian Cabrera, Director

### **The Office of Pontifical Mission Societies**

Very Rev. Raynaldo Yrlas, Coordinator

### **Catholic Relief Services**

Very Rev. Raynaldo Yrlas, Coordinator

### **Episcopal Councils**

#### *College of Consultors*

Very Rev. Msgr. Louis Kihneman, III, VG

Very Rev. Patrick K. Donohoe (Chancellor)

Rev. Tony Blount, SOLT

Rev. Msgr. Mark Chamberlain

Rev. Msgr. Michael Howell

Very Rev. Joseph A. Lopez, JCL

Rev. John Ouellette

Rev. Philip J. Panackal

Rev. Msgr. Leonard Pivonka, JCD

Rev. Lukose J. Thirunelliparambil

Rev. Msgr. Lawrence White

### *Presbyteral Council*

Rev. Joseph A. Lopez, JCL, Chairman

Rev. Paul A. Hesse, Vice-Chairman

Very Rev. Msgr. Roger Smith, Secretary

Rev. Tony Blount, SOLT

Very Rev. Julian Cabrera

Rev. Msgr. Mark Chamberlain

Very Rev. Patrick K. Donohoe, Chancellor

Rev. Donald Downey, JCL

Very Rev. Msgr. Thomas P. Feeney, JCL

Rev. Richard Gonzales

Rev. Msgr. Michael Howell

Very Rev. Msgr. Louis Kihneman III, VG, Ex-officio

Very Rev. Msgr. Thomas P. McGettrick, Ex-officio

Rev. Msgr. Seamus McGowan

Rev. John Ouellette

Rev. Philip J. Panackal

Rev. Msgr. Leonard Pivonka, JCD

Rev. Lukose J. Thirunelliparambil

Rev. Msgr. Lawrence White

### *Finance Council*

Gregor Seagrave, Consultant, Chairman

David Campa, Vice Chancellor/In-House Counsel

Very Rev. Msgr. Louis Kihneman, III, VG

Rev. Romeo Salinas

Sister Mary Ann Korczynski, IWBS

Tommy Carlisle

Frederick J. McCutcheon

Mike McClellan, CPA

MJ Olsen

Deacon Adelfino "Fino" Palacios, CPA

Gary Ramirez, Diocesan Legal Counsel

## **Communications**

Marty Wind, Director

## *South Texas Catholic*

Alfredo E. Cárdenas, Editor

Mary Cottingham, Associate Editor

Adel Rivera, Administrative Assistant

Web site: [www.southtexascatholic.com](http://www.southtexascatholic.com)

E-mail: [stc@diocesecc.org](mailto:stc@diocesecc.org)

### *Diocesan Web site*

Alfredo E. Cárdenas, Administrator

Madelyn Calvert, Website Coordinator

Web site: [www.diocesecc.org](http://www.diocesecc.org)

[mcalvert@diocesecc.org](mailto:mcalvert@diocesecc.org)

## **Fiscal Office**

Gregor Seagrave, Fiscal Officer

### *Controller/Accounting*

Paul Damerow, CPA

Yolanda Noyola, Accounting Supervisor

Scarlett Matthews, Payroll/Accounts Payable

Angie Ortiz, Accounts Payable Staff Accountant

Anna Bracken, Parish/School Accounting System

### *Real Estate/Property Manager*

Deacon Michael Mantz

Lisa Leal, Administrative Assistant

### *Cemeteries*

Jill Hundley

Johnny Murphy, Holy Cross Cemetery Maintenance

Telephone: (361) 654-2721

### *Construction*

Orlando Zepeda

#### Building Commission

Orlando Zepeda, Chairman

Very Rev. Msgr. Louis F. Kihneman, III, Vicar General

Jimmy Earnest

Arthur B. "Bud" Colwell

Leo Farias

Jeffrey Kisel

Michael Lippincott

Ricardo Rodriguez

James G. Rome, Architect (Retired)

Gregor Seagrave, Ex-officio

Ted Stephens

#### Consultants

Jeffrey Kisel, Risk Management

Jimmy Earnest

#### Chancery Facilities

Maintenance/Security

## Office of Parish Stewardship

Cande De Leon, Director

Lynette Saenz, Administrative Assistant/Grants Coordinator

Elizabeth Martinez, Donor Services and Database Coordinator

Catholic Stewardship Appeal

KMF Grants

Bishop's Guild

## Diocesan Archives

Patricia Roeser, Records Administrator

Sandra Castellanos, Administrative/Research Assistant

## Information Technology

Lee Alvarado, Director



## **Office for Safe Environment and Child & Family Resources**

Stephanie Bonilla, Director

Kristi Skrobarczyk, Program Coordinator

## **Human Resources**

Diana Sanchez, Benefits Coordinator

Edith Balderas, Administrative Assistant

Gracie Rodriguez, Receptionist

Tony Mejia, Diocesan Courier

## **Vocation Office**

Located at:

3036 Saratoga

Corpus Christi, Texas 78415

Telephone: (361) 334-2781

Fax: (361) 334-2780

E-mail: [vocations@diocesecc.org](mailto:vocations@diocesecc.org)

Very Rev. Joseph A. Lopez, JCL, Vocations Director

Rachel Dimas, Assistant to Vocation Director

Rev. Peter Stanley, Associate Director

Rev. John Chavarria, Associate Director

## **Diocesan Telecommunications Corporation**

Located at:

KLUX Radio (89.5)

1200 Lantana

Corpus Christi, Texas 78407

Telephone: (361) 289-6437

Fax: (361) 289-1420

Web site: [www.GoCCN.org](http://www.GoCCN.org)

E-mail: [ccn@GoCCN.org](mailto:ccn@GoCCN.org)

Marty Wind, General Manager/Exec. Vice-President

Margie Rivera, Administrative Assistant  
Russ Martin, Director of Broadcast Operations  
Greg Waller, Weekend Broadcaster  
Richard Luna, Producer/Editor

## Catholic Charities of Corpus Christi, Inc.

Located at:

1322 Comanche  
Corpus Christi, TX 78401-2621

Telephone: (361) 884-0651

FAX: (361) 884-3956

Web site: [www.catholiccharities-cc.org](http://www.catholiccharities-cc.org)

E-mail: [lmckamie@diocesecc.org](mailto:lmckamie@diocesecc.org)

Linda McKamie, Executive Director

Doreya “Yiyi” Dean, Grant Writer/Administrator

Betty Berry, Building Facilitator Coordinator

Sandra Cadena, Receptionist

Carlos Uria, Maintenance/Housekeeping

Yirka Monzón Cutiño, Maintenance/Housekeeping

### *Rural Outreach Department*

Gessete Salcido, Outreach Coordinator

### *Emergency Aid*

Yiyi Dean, Administrator

Amanda Lazo, Administrative Assistant

Sylvia Ortiz, Intake Specialist

Elma Ortiz, Intake Specialist/Data Manager

### *HUD Approved Housing Counseling Department*

Yiyi Dean, Director

Julie Ramón, Senior Case Manager

Amanda Lazo, Housing Specialist/Administrative Assistant

Julie Ramón, Family Self-Sufficiency / First Call Coordinator

### *Family and Individual Counseling Department*

Gloria Garcia, M.S., L.P.C., L.M.F.T., Director/License Coordinator

### *Ministry and Life Enrichment for the Disabled*

Celia Méndez, Director/Interpreter

Video Phone: (361) 288-8791

Aurora Martinez, Director/MR

Maintenance/Housekeeping

Carlos Uria, Maintenance

Sandra Cadenas, Receptionist

### *Representative Payee Program*

Elsa Ortiz, Director

Johanna Swetish, Payee

### *Immigration and Refugee*

Carolyn Thompson, Attorney at Law, Director

Kimberley Hall Seger, Attorney at Law

Juanita Cardiel, Accredited Representative

Whitney Knight, Program Assistant

### *Community Wellness and Education Outreach*

Fax: (361) 882-8077

Jacquelyn Siller, Director/Grant Writer

Brandy Hibdon, Certified Community Health Worker/Parent Educator

Lisa Pantoja, Certified Community Health Worker/Parent Educator

Crystal Morales, Certified Community Health Worker/Parent Educator

*MEND - Family Centered Childhood Obesity and Diabetes Prevention Program*

Angie Garcia, Program Manager

Program Assistants:

Valerie Montemayor

Zachary Gatlin

Heather Spragins

Rudy Flores

Ramon Quijano

## **Mother Teresa Shelter**

Located at:

513 Sam Rankin Avenue  
Corpus Christi, TX 78401-2621

Telephone: (361) 883-7372

Fax: (361) 881-1373

Web site: [www.motherteresashelter.org](http://www.motherteresashelter.org)

Email: [mteresashelter@diocesecc.org](mailto:mteresashelter@diocesecc.org)

Sister Rose Paul Madassery, SABS, Operations Supervisor

Sister Rency Moonjely, SABS, Associate

Sister Kochuthressia Moolan, SABS, Associate

Gerry Burns, Associate

Margaret Mitchell, Associate

Kermit Johnson, Associate

Margaret Trevino, Associate

Irma Garza, Case Manager

## **Men's Transitional Housing**

Located at:

1605 Mestina St.  
Corpus Christi, TX 78401

Telephone: (361) 904-0377

Fax: (361) 904-0885

Web site: [www.motherteresashelter.org](http://www.motherteresashelter.org)

Email: [rbrett@diocesecc.org](mailto:rbrett@diocesecc.org)

Deacon Stephen Nolte, Office & Facility Manager

Julie Ramon, Senior Case Manager

## **Office of Catholic Schools**

Located at:

209 N. Water  
Corpus Christi, TX 78401

Telephone: (361) 693-6698

Fax: (361) 882-1018

Web site: [www.diocesecc.org](http://www.diocesecc.org)

E-mail: [chancery@diocesecc.org](mailto:chancery@diocesecc.org)

Nannette Quintanilla Hatch, Interim Superintendent

Anna M. Lozano, Associate Superintendent  
Teresa Martinez, School Health Administrator  
Norma Martinez, Administrative Assistant

## Department of Pastoral Parish Services

Located at:

209 N. Water

Corpus Christi, TX 78401

Telephone: (361) 882-6191

Fax: (361) 882-1018

Web site: [www.diocesecc.org](http://www.diocesecc.org)

E-mail: [chancery@diocesecc.org](mailto:chancery@diocesecc.org)

Deacon Mark Arnold, Executive Director

Nellie Serna, Executive Administrative Assistant

Heath Garcia, Departmental Secretary

### *Office of Religious Education*

Therese Recinella, Director of Catechesis

Amy Barragree, Campus Ministry TAMU-CC and Del Mar College

### *Office of Family Life*

Leslie Brown

### *Office of Youth Ministry*

Jaime Reyna, Director

### *Office of Life, Justice and Human Dignity*

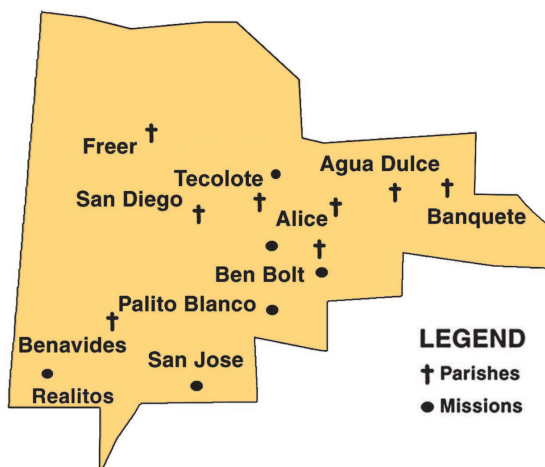
Ben Nguyen, Canonical Counsel and Theological Advisor

## Deaneries

### Alice Deanery

Rev. Msgr. Leonard Pivonka, JCD – Dean  
St. Elizabeth Parish  
603 E. Fifth St.  
Alice, TX 78333-1009  
Telephone: (361) 664-6481; FAX: (361) 664-7243

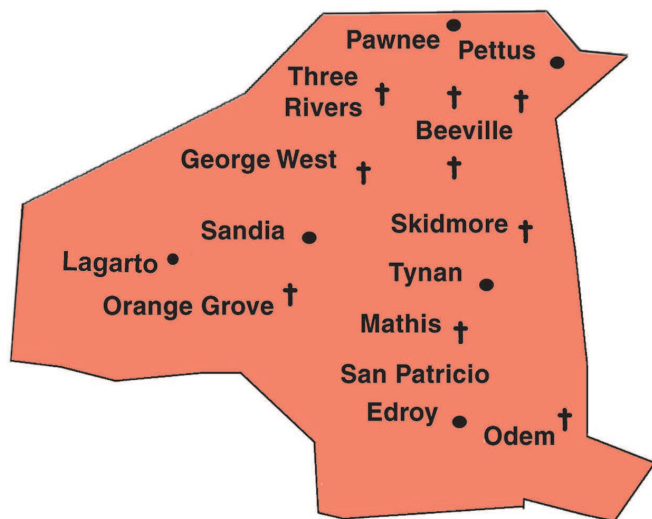
St. Frances of Rome, Agua Dulce  
Our Lady of Guadalupe, Alice  
Santo Niño de Atocha Mission, Tecolote  
St. Elizabeth, Alice  
St. Joseph, Alice  
Sacred Heart Mission, Realitos  
St. Michael the Archangel, Banquete  
St. Peter Mission, Ben Bolt  
Santa Rosa de Lima, Benavides  
St. Joseph Mission, San José  
St. Mary, Freer  
St. Francis de Paula, San Diego  
St. Joseph Mission, Palito Blanco



## Beeville Deanery

Rev. Lukose J. Thirunelliparambil – Dean  
 Our Lady of Victory  
 707 North Avenue E  
 Beeville, TX 78102-3898  
 (361) 358-3761; FAX: (361) 358-2028

St. James, Beeville  
 Our Lady of Victory, Beeville  
     Sacred Heart Mission, Pettus  
 St. Joseph, Beeville  
 St. George, George West  
 Sacred Heart, Mathis  
     St. Pius X Mission, Sandia  
 Sacred Heart of Jesus, Odem  
     Our Lady of Guadalupe Mission, Edroy  
 St. John of the Cross, Orange Grove  
     St. Francis of Assisi Mission, Lagarto  
 Immaculate Conception, Skidmore  
     St. Francis Xavier Mission, Tynan  
 Sacred Heart, Three Rivers  
     Our Lady of Guadalupe Mission, Pawnee



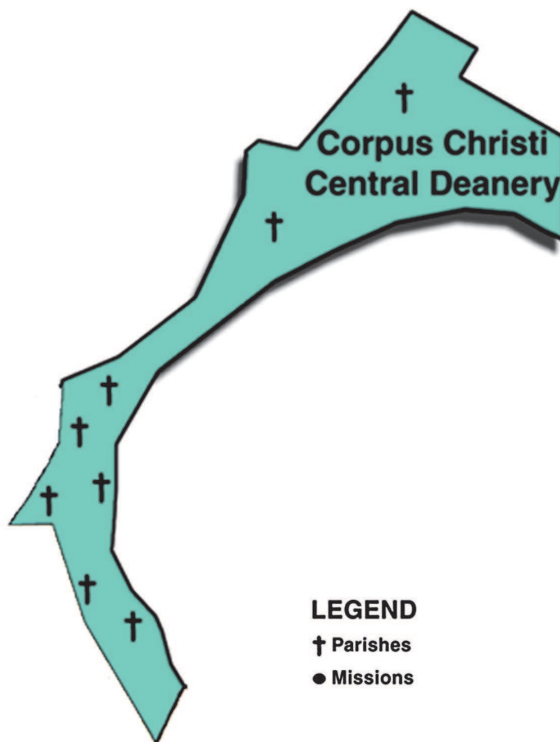
### LEGEND

† Parishes  
 ● Missions

## Corpus Christi Central Deanery

Rev. Msgr. Mark Chamberlin – Dean  
Our Lady of Mount Carmel Parish  
1008 Austin St.  
Portland, TX 78374  
(361) 643-7533; FAX: (361) 643-5544

Corpus Christi Cathedral  
Holy Cross, Corpus Christi  
Our Lady Star of the Sea, Corpus Christi  
Sacred Heart, Corpus Christi  
St. Thomas More, Corpus Christi  
St. Patrick, Corpus Christi  
Immaculate Conception, Gregory  
Our Lady of Mount Carmel, Portland

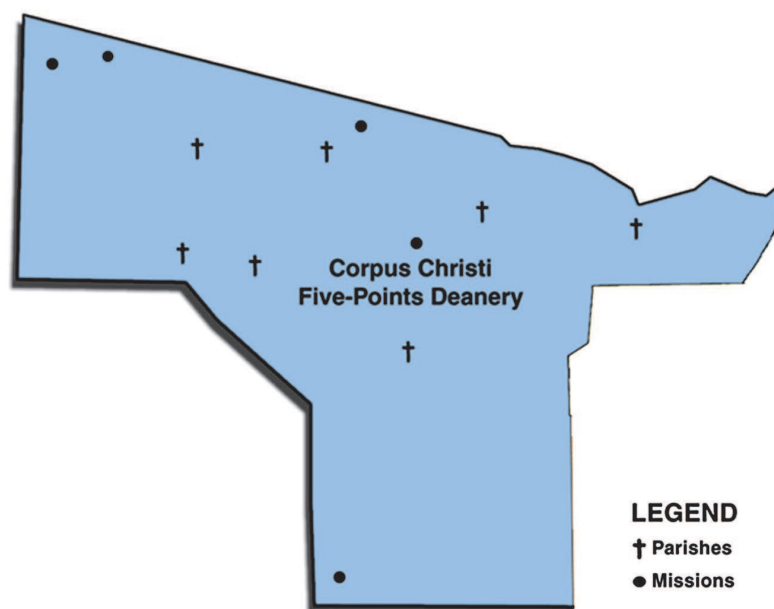




## Corpus Christi Five Points Deanery

Rev. Tony Blount – Dean  
St. Anthony of Padua  
204 Dunne Street  
Robstown, TX 78380-0792  
(361) 387-2774; FAX: (361) 387-5114

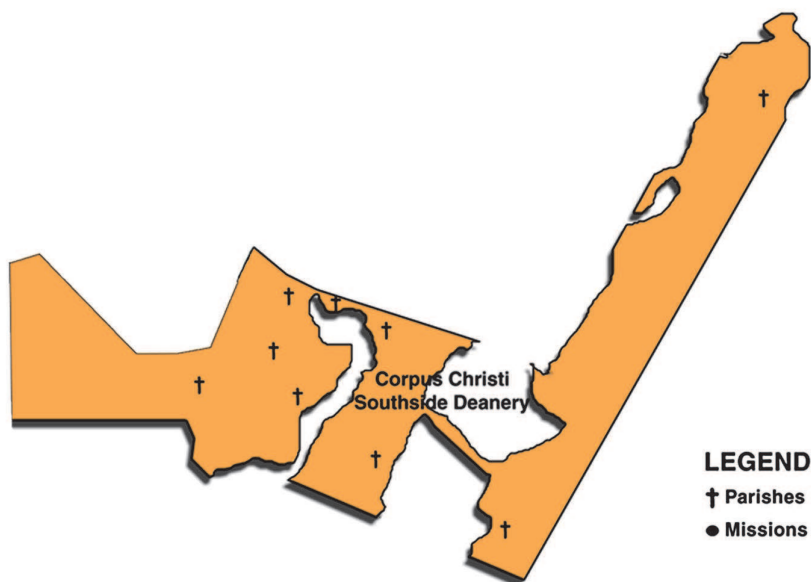
St. Thomas the Apostle, Calallen  
St. Patrick Mission, San Patricio  
Our Lady of the Rosary, Corpus Christi  
Our Lady of Mount Carmel Mission, Clarkwood  
St. Vivian Mission, Petronila  
St. Peter Prince of the Apostles, Corpus Christi  
St. Mary Mission, Corpus Christi  
St. Theresa, Corpus Christi  
St. Michael the Archangel Latin Mass Community  
St. Anthony of Padua, Robstown  
St. Mary Mission, Robstown  
St. John Nepomucene, Robstown  
St. Anthony, Violet



## Corpus Christi Southside Deanery

Rev. Msgr. Michael Howell – Dean  
St. Andrew by the Sea  
14238 Encantada Avenue  
Corpus Christi, TX 78418  
(361) 949-7193; FAX: (361) 949-0717

Cardinal John Henry Newman Student Center, Corpus Christi  
Most Precious Blood, Corpus Christi  
Our Lady of Guadalupe, Naval Air Station, Corpus Christi  
St. Anselm of Canterbury Community, Corpus Christi  
Our Lady of Perpetual Help, Corpus Christi  
St. Andrew by the Sea, Corpus Christi  
St. Helena of the True Cross of Jesus, Corpus Christi  
St. John the Baptist, Corpus Christi  
St. Paul the Apostle, Corpus Christi  
St. Philip the Apostle, Corpus Christi  
St. Pius X, Corpus Christi  
St. Joseph, Port Aransas



## Corpus Christi Westside Deanery

Rev. Msgr. Lawrence White - Dean  
Ss. Cyril & Methodius Parish  
3210 South Padre Island Drive  
Corpus Christi, TX 78415  
(361) 853-7371; FAX: (361) 851-1438

Christ the King, Corpus Christi  
Holy Family, Corpus Christi  
Nuestra Señora de San Juan de los Lagos, Madre de la Iglesia  
Our Lady of Guadalupe, Corpus Christi  
Our Lady of Pilar, Corpus Christi  
St. Joseph, Corpus Christi  
Ss. Cyril & Methodius, Corpus Christi



## Kingsville Deanery

Rev. John Ouellette - Dean

St. Theresa of the Infant Jesus Parish

PO Box 569

Premont, TX 78375-0569

(361) 348-2202; FAX: (361) 348-3533

St. James, Bishop

St. James Mission, Driscoll

Sacred Heart, Falfurrias

St. Anne Mission, Encino

Our Lady of Good Counsel, Kingsville

St. Gertrude, Kingsville

St. Thomas Aquinas – University Catholic Center

St. Joseph, Kingsville

St. Martin, Kingsville

St. Theresa of the Infant Jesus, Premont

Immaculate Conception Mission, Concepción

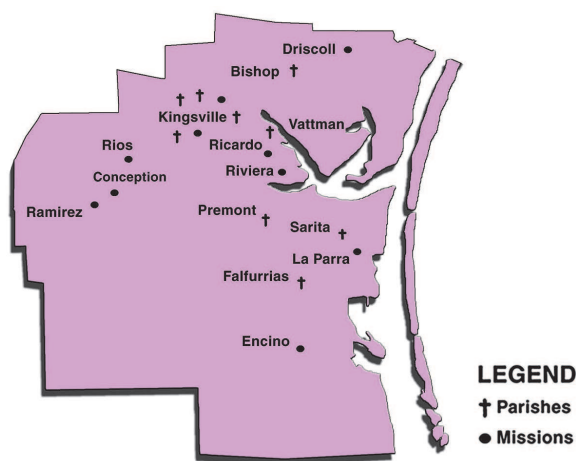
Our Lady of Guadalupe Mission, Ramirez

Our Lady of Guadalupe, Sarita

Our Lady of Consolation, Vattman

Our Lady of Guadalupe Mission, Riviera

Sacred Heart Mission, Ricardo



## Refugio Deanery

Rev. Philip Panackal - Dean  
Our Lady of Refuge Parish  
1008 S. Alamo St.  
Refugio, TX 78377  
(361) 526-2083; FAX: (361) 526-5653

St. Mary Star of the Sea, Aransas Pass

St. Peter, Fulton

Our Lady of Assumption, Ingleside

Our Lady of Refuge, Refugio

St. James, Refugio

St. Catherine Mission, Blanconia

Sacred Heart, Rockport

Stella Maris Chapel, Lamar

Our Lady of Guadalupe, Sinton

Sacred Heart, Sinton

St. Paul Mission, St. Paul

Immaculate Conception, Taft

Holy Family, Taft

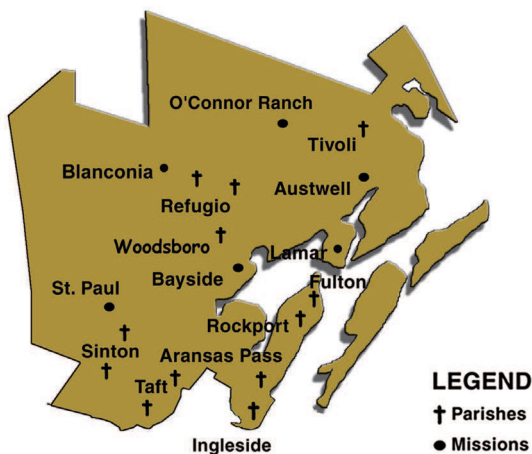
Our Lady of Guadalupe, Tivoli

St. Dennis Mission, O'Connor Ranch

St. Anthony of Padua Mission, Austwell

St. Therese, Woodsboro

St. Mary Mission, Bayside



**Notes:**



