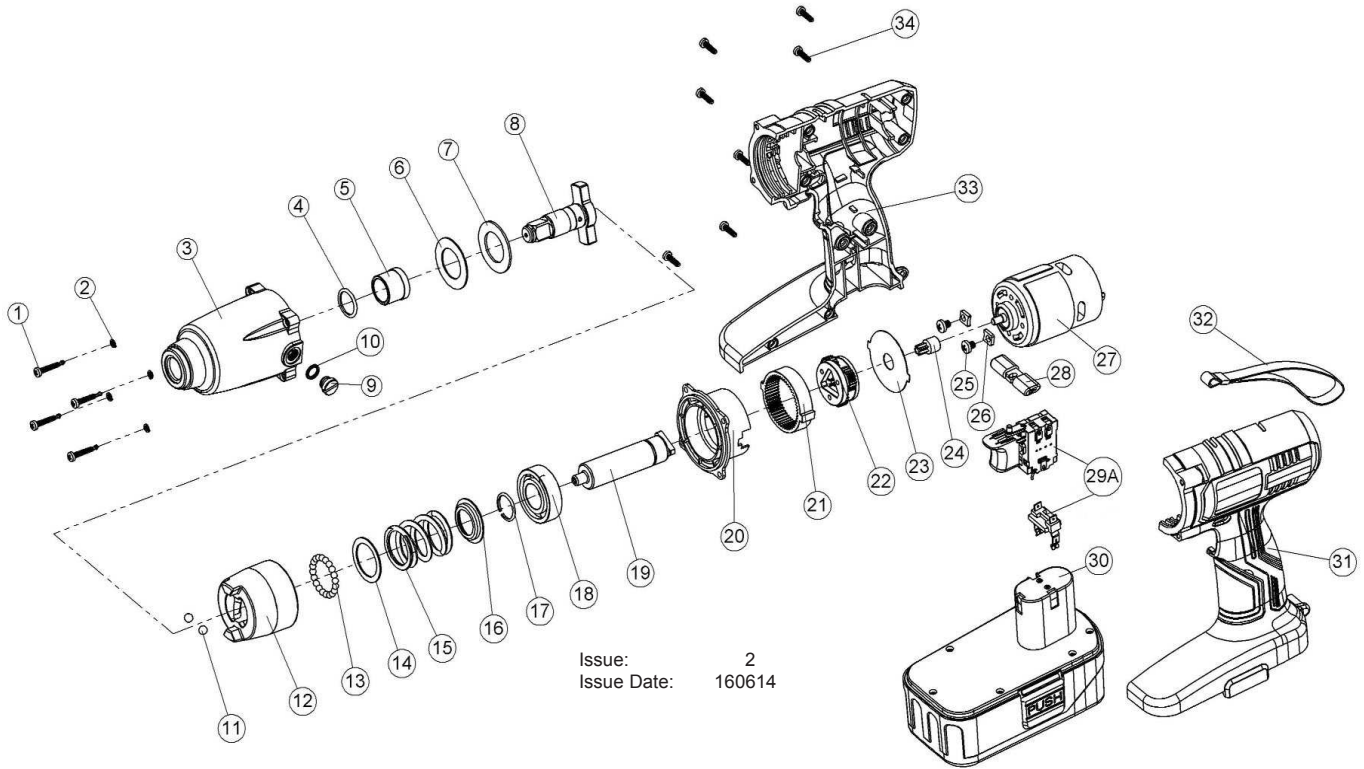




PARTS FOR:  
**CORDLESS IMPACT WRENCH 24V**  
**1/2" Sq Dr 325lb.ft**  
**MODEL: CP2400.V4**



Issue: 2  
 Issue Date: 160614

ITEM	PART NO	DESCRIPTION	ITEM	PART NO	DESCRIPTION
1	CP2400.V2-01	SCREW	20	CP2400.V2-20	GEARBOX
2	CP2400.V2-02	SPRING WASHER	21	CP2400.V2-21	GEAR RING
3	CP2400.V2-03	FRONT CASING WITH BUSH AND O-RING	22	CP2400.V2-22	PLANETARY GEARS
4	CP2400.V2-04	O-RING 18 X 2.5	23	CP2400.V2-23	SPACER
5	CP2400.V2-05	BEARING	24	CP2400.V2-24	MOTOR PINION GEAR
6	CP2400.V2-06	RUBBER WASHER	25	CP2400.V2-25	SCREW
7	CP2400.V2-07	SHIM	26	CP2400.V2-26	WASHER
8	CP2400.V2-08	FRONT IMPACT ASSEMBLY	27	CP2400.V2-27A	MOTOR ASSEMBLY (c/w 24,25,26&27)
9	CP2400.V2-09	SCREW	28	CP2400.V2-28	FORWARD/REVERSE ROD
10	CP2400.V2-10	O-RING	29	CP2400.V4-29	VARIABLE SPEED SWITCH (LIWH-240V)
11	CP2400.V2-11	STEEL BALL 6.1mm	30	CP2400BP	BATTERY 24V
12	CP2400.V2-12	REAR IMPACT BLOCK	31	CP2400.V3-31	MAIN CASING (LEFT SIDE)
13	CP2400.V2-13	STEEL BALL 4.5mm	32	CP2400.V2-32	BELT
14	CP2400.V2-14	GASKET	33	CP2400.V3-33	MAIN CASING (RIGHT SIDE)
15	CP2400.V2-15	SPRING	34	CP2400.V2-35	SCREW
16	CP2400.V2-16	GASKET		CP2400.V4.C	BATTERY CHARGER (not shown)
17	CP2400.V2-17	BAFFLE CLIP		CP2400.V2-37	BLOW MOULDED CASE (not shown)
18	CP2400.V2-18	BEARING 6004ZZ		CP2400.V2-38	SIDE HANDLE (not shown)
19	CP2400.V2-19	SHAFT			

**NOTE:** It is our policy to continually improve products and as such we reserve the right to alter data, specifications and component parts without prior notice.

**IMPORTANT:** No liability is accepted for incorrect use of product.

**WARRANTY:** Guarantee is 12 months from purchase date, proof of which will be required for any claim.

**INFORMATION:** For a copy of our latest catalogue and promotions call us on 01284 757525 and leave your full name and address, including postcode.



Sole UK Distributor,  
 Sealey Group, Kempson Way,  
 Suffolk Business Park,  
 Bury St Edmunds, Suffolk, IP32 7AR



01284 757500



01284 703534



[www.sealey.co.uk](http://www.sealey.co.uk)



[sales@sealey.co.uk](mailto:sales@sealey.co.uk)