

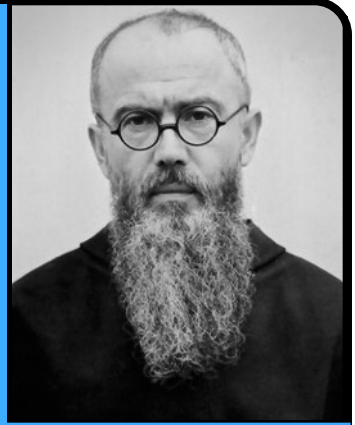


MILITIA OF THE IMMACULATA

A 12 day Catholic Pilgrimage

Poland

September 6-17, 2016



75th Anniversary
of the Martyrdom of
St. Maximilian
Kolbe

Without Sacrifice, there is no Love.

*For Jesus Christ
I am prepared to suffer
still more.*



Plus visits to Divine Mercy & St. John Paul II locations

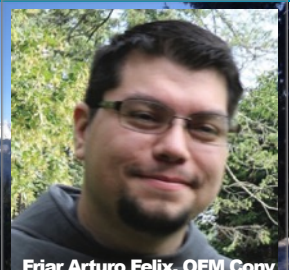
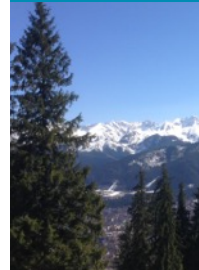
12-Day Year of Mercy Pilgrimage Inclusions:

- ★ Roundtrip Air transportation from Chicago O'Hare Airport to Poland (per itinerary). Airfare may be available from other cities. Call for price difference.
- ★ Private Motor-coach in Poland with driver following the itinerary (some tours require walking).
- ★ Airport Transfers in Poland (for those flying with the group).
- ★ 10 night accommodations at 4-star hotel properties in Warsaw, Kuznia and Krakow. Nice 3-star property in Czestochowa and a retreat house in Harmeze.
- ★ 22 Meals (10 Breakfasts, 2 Lunches & 10 Dinners).
- ★ **Friar Arturo Felix, OFM CONV** as Chaplain.
- ★ **Fr. Kolbe Missionary** accompanies the pilgrimage group.
- ★ Powerful spiritual program including daily Mass, Rosaries, Meditations, Sacrament of Reconciliation and the Divine Mercy Chaplet.
- ★ **Juan Landa** from Mater Dei Tours as Pilgrimage Director, accompanies the group from Chicago, back to Chicago.
- ★ **Agnes Nowak**, Mater Dei's local Tour Manager/Translator in Poland, accompanies group while in Poland.
- ★ Expert local city guides at different locations throughout the itinerary.
- ★ Admissions to all featured and selected visits of the touring program.
- ★ Tour program features (for detailed inclusions read the itinerary):
 - * **Poland** visits in order: Warsaw (Place where St. Faustina entered the convent, Tomb of Fr. Jerzy), Niepokalanow (foundation of St. Maximilian Kolbe), Pabianice, Zdunska Wola, Jasna Gora (Icon of Our Lady of Czestochowa), Harmeze, Auschwitz-Birkenau Concentration Camp (place where St. Maximilian Kolbe and St. Teresa Benedicta of the Cross were martyred), Wadowice (Birthplace of Saint John Paul II), Kalwaria, Krakow City (St. Francis Basilica and much more), Divine Mercy Shrine (Tomb of St. Faustina, her cell and one of the icons of the Divine Mercy), Salt Mines of Wieliczka (underground Church and so much more), Zakopane mountain area (John Paul's beloved Tatra Mountains), and much more!
- ★ Hotel Porterage of 1 suitcase per person (wherever service is available)
- ★ Full documentation packet with luggage tags & re-usable wallet.
- ★ **TAXES & FEES:** US/Europe airport, departure, connection and transportation taxes and fuel surcharges. Local hospitality and accommodation and food sales taxes and service charges.



Does not include:

- ✦ Local Tour Escort/Guides and Bus Chauffeur's gratuities (\$10/day/ person estimated).
- ✦ Mass offertories at will.
- ✦ Most lunches. Meals do not include some beverages. (See registration for price; read Terms & Conditions)

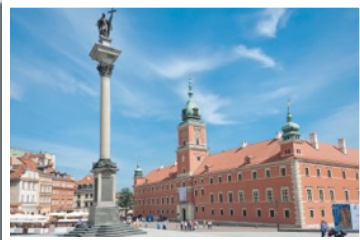


Friar Arturo Felix, OFM Conv



www.materdeitours.com Tel: 800-515-2632

Day 1: Tuesday, September 6th: DEPART USA FOR POLAND. Meet Juan Landa, your Mater Dei Tour Director, at Chicago's O'Hare International Airport by the LOT Polish Airlines ticket counter (terminal #5). Please read the "Tips for Flying Days" sheet (included with your final travel documents) for more rendezvous information. Depart Chicago O'Hare for Warsaw, Poland and enjoy dinner, refreshments and video entertainment onboard as you fly to the European continent. **(M)**



Day 2: Wednesday, September 7th: ARRIVE IN WARSAW, POLAND. Upon arrival in Warsaw, collect your luggage, board our coach and enjoy a tour of Poland's Capital City including sites like the **Old Town** and **Market Square**. Stop to pray at the **Church of St. Stanislaus Kostka**, where the tomb of the famous Priest Martyr **Blessed Fr. Jerzy Popieluszko** is located. Fr. Jerzy was murdered by government secret security police while teaching the truths of our Faith and proclaiming the dignity of the human person. Then we visit and pray the Chaplet of Divine Mercy at the **Convent of the Congregation of the Sisters of Our Lady of Mercy** at 3-9 Zytnia Street, where Helen Kowalska (St. Faustina) entered the order under the acceptance of Mother Michaela Moraczewska. Following this visit we proceed to **Niepokalanow** where **Holy Mass*** is planned at the Basilica or one of the chapels there. Enjoy a welcome to Poland dinner tonight. **(D)**

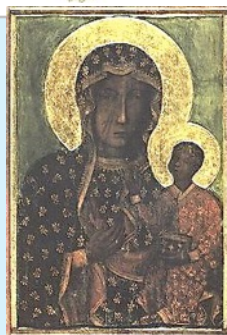
Day 3: Thursday, September 8th (Our Lady's Birthday): Niepokalanow: After breakfast enjoy a special tour including the **Kolbe Museum**, **St. Maximilian's Cell** and many other impressive sights that make up the **City of the Immaculate**, the great foundation of **St. Maximilian Kolbe**. **Holy Mass*** is planned here. Enjoy a group dinner on our last night in Niepokalanow. **(B, D)**



Day 4: Friday, September 9th: Niepokalanow, Pabianice & Zdunska Wola: After breakfast, travel to **Pabianice** and visit the parish **Church of St. Matthew** where we will celebrate **Holy Mass*** at the Altar of **Our Lady of Victories**. After Mass visit **Zdunska Wola**, birthplace of **St. Maximilian**. Renew your baptismal promises in the beautiful **Church of the Assumption**. Afterwards travel to Czestochowa for dinner and overnight. **(B, D)**



* All Masses and liturgical celebrations are subject to change by local ecclesiastical authorities.



Day 5: Saturday, September 10th: Czestochowa: Embark on an unforgettable journey to Poland's most sacred Shrine dedicated to Our Most Blessed Mother in **Jasna Gora**, home of the **Black Madonna**, the precious icon of **Our Lady of Czestochowa**. For 600 years, this icon has been the symbol of the Polish people's love and devotion for Mary! The Icon enjoys a long tradition of having been "written" (Icons are never painted) by **St. Luke, the Evangelist**, himself! After praying a rosary, **Mass*** is celebrated here. After our memorable visit to Jasna Gora, continue to **Harmeze-Oswiecim** to the **St. Maximilian Retreat House**. Enjoy dinner with your pilgrim group at the Kolbe Center on this the first of a 3 night stay. **(B, D)**

Day 6: Sunday, September 11th: Auschwitz: After breakfast and Holy Mass at the Kolbe Center visit **Auschwitz, the former Nazi Concentration Camp**, where we learn about the camp's dark history, and also about the exemplary model of **St. Maximilian Kolbe**. Make a special visit to the cell of **St. Maximilian Kolbe** and afterwards visit the **Martyrdom Museum**. Return to the Center for Lunch. This afternoon we will hold a Marian Consecration ceremony. Dine with you fellow pilgrims at the Kolbe center. **(B, L, D)**



Day 7: Monday, September 12th: Birkenau & Marian Kolodziej Exhibit: After breakfast travel back to the Auschwitz/Birkenau complex. Adjacent to Auschwitz, Birkenau is preserved in more or less the same way it was found when it was liberated in January, 1945. Many of the Brick and wooden barracks remain although all 4 crematorium were dynamited by the retreating SS. What remained at the time of their retreat can still be seen. Continue on to the **St. Maximilian Parish** for ***Holy Mass*** before returning to the center for **lunch**. After lunch, visit to the Franciscan Church to view the **exhibit** of a former camp prisoner. Return to the Kolbe Center for dinner and our last night stay. **(B, L, D)**

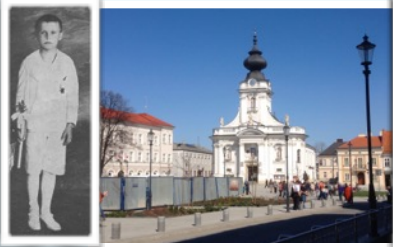


Poland

Militia of the Immaculata

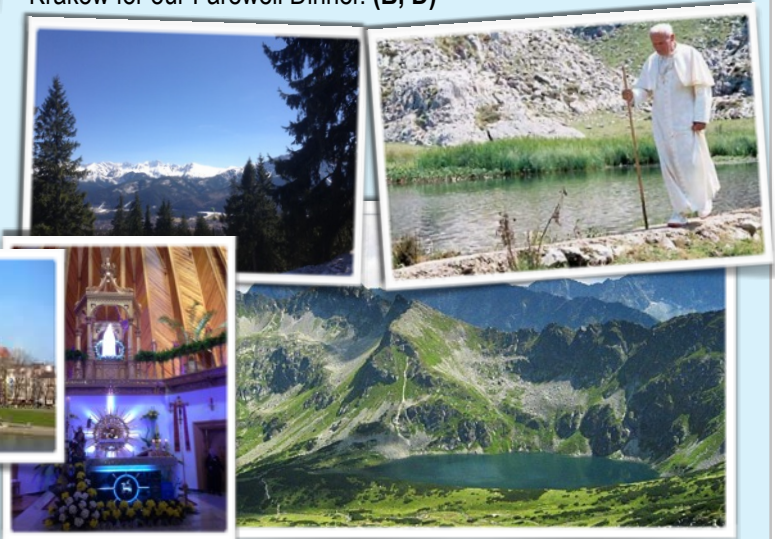


Meals' Legend:
M = Airplane Meals B = Breakfast D = Dinner



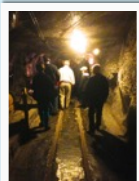
Day 8: Tuesday, September 13th: Wadowice.

Drive this morning to visit **Wadowice**, the birthplace of **Karol Wojtyla, Saint John Paul II**. **Holy Mass*** is planned in Wadowice at **Presentation of Mary, Karol Wojtyla's parish church**. Following introduction of St. John Paul II's early life continue on to Krakow to check into our final hotel for a four night stay. Enjoy dinner with your fellow pilgrims sharing your experiences of the last several days with the great St. Maximilian Kolbe. (B, D)



Day 9: Wednesday, September 14th: Krakow

City Tour: Enjoy a fabulous city tour of Krakow. Visit **Wawel Cathedral** (where Karol Wojtyla was ordained Archbishop of Krakow). Visit the **Royal Castle** including the tombs of the kings. Then see **Market Square**, witness the **Bugler from St. Mary's tower** (playing the famous **Hejnał**), visit **St. Mary's Basilica**, the **Cloth Hall**, and the **Burgher's House** and much more! **Mass*** at **St. Francis Basilica**, where St. Maximilian Kolbe was once stationed. Return to your hotel to enjoy dinner with your pilgrim group. (B, D)



Day 12: Saturday, September 17th: Return to the USA (B):

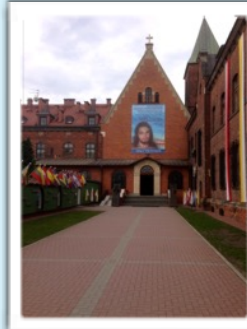
Our pilgrimage to Poland has come to its end. Transfer to Krakow's John Paul II International Airport this morning for our flight to the U.S.A. As our airplane takes off, take one last look at the beautiful land that now holds a special place in our hearts, and say:

Pożegnanie



Day 10: Thursday, September 15th: Salt Mines of Wieliczka & Lagiewniki.

After breakfast, depart to **Lagiewniki**, to visit a highlight of our pilgrimage, the unforgettable **Shrine of Divine Mercy**, with **St. Faustina's Convent Chapel** and her **Tomb**. Pray the Divine Mercy Chaplet at the Chapel. Then visit the newly opened **St. John Paul II Center**. Here, you will have an opportunity to pray before some of his relics. This shrine is built upon the quarry where he once worked as a young man in the early days of the occupation. Next, embark on an excursion to a most unique destination, the **Salt Mines of Wieliczka!** Blessed in 2010 by His Eminence Cardinal Stanislaw Dziwisz (St. John Paul's former personal secretary), the mines are a beautiful testimony to the piousness of generations of Wieliczka miners working here. Magnificent chapels, and religious sculptures carved in salt, can be found in this mine's beautiful chambers, galleries and passageways. **Holy Mass*** is planned in one of the subterranean chapels of this amazing complex. Return to Krakow for dinner. (B, D)



Upon arrival in Chicago, you will be processed through US Homeland Security (US Customs & US Immigrations). Please read your blue colored "Tips for Flying Days" include d with your travel documents.

Welcome Home! Mater Dei TOURS

* All Masses and liturgical celebrations are subject to change by local ecclesiastical authorities.



www.materdeitours.com Tel: 800-515-2632

General Terms & Conditions

Purchaser and/or traveler of this tour (you) acknowledges that Landa Cleary Travel Company, Inc. (d.b.a = doing business as Mater Dei Tours and Relevant Journeys) is acting as an independent intermediary (travel agent) between you and suppliers of goods and services, which are not directly supplied by Landa Cleary Travel Co., Inc., such as air transportation, hotel accommodations, ground and sea transportations, tours, tour guides, escorts, etc. and shall not be responsible for actions or omissions on the part of such suppliers, which may result in any loss, damage, delay or injury to you or your travel companions or group members. Landa Cleary Travel Company, Inc. and any religious or private organization contracting its services shall not be responsible for any injuries, damages or losses caused to any traveler in connection with social or labor unrest, mechanical or construction difficulties, diseases, local laws, climatic conditions, war, terrorist activities or any other actions omissions, or conditions outside their control.

By embarking upon his/her travel, the traveler(s) voluntarily assumes all the risks, and is advised to obtain appropriate insurance coverage against them. Your booking shall constitute a consent to the above and engaging the company, acknowledges these conditions and agrees to hold the company blameless in making the arrangements of his/her behalf, and agrees that restitution or damages, if any are claimed, shall be sought directly from the suppliers.

Deposits: A deposit of \$500 per person is required to secure your space to Landa Cleary Travel Company, Inc. Your deposits are used to cover and guarantee your space. **Deposits will be refunded in the event the tour does not meet the minimum quorum necessary to make the trip possible.** If you use a credit card as payment, you agree that if any cancellation penalties are due, Landa Cleary Travel Co., Inc. is authorized to charge the penalties to your credit card above.

Final Payments: Full payment must be made no later than **100 days** prior to departure unless otherwise stated. Payments may be made by check, Visa or MasterCard. If payment is not received as scheduled, your reservation may be automatically canceled and your deposit payment becomes forfeit. If you use a credit card as payment, for your convenience, you may opt to have Landa Cleary Travel Co., Inc. charge your balance to the same authorized credit card on the registration form by simply calling us with your verbal authorization.

Cancellations: All cancellations must be received in writing to our company prior to tour departure during normal business hours (9:00am to 5:00pm CST, Monday through Friday). All Cancellations are subject to the following per person penalties prior to departure:

100 days or prior.....\$500.00
99 to 65 days.....50% of tour
64 to 35 days.....75% of tour
34 to 0 days.....No Refunds

No refund can be made for independent non-refundable airfare. Note: Travel Insurance Premiums are not refundable.

If you use a credit card as payment, you agree that if any cancellation penalties are due, Landa Cleary Travel Co., Inc. is authorized to charge the penalties to your credit card above. Traveler agrees to forfeit their reserved space if payment is not made by the designated date.

For price, taxes, fees & deposit and balance information, please see registration sheet.

Registration Deadline:

Friday, May 27th, 2016

(space may sell out before deadline)

Tour Membership: To ensure a positive experience, the Landa Cleary Travel Co., Inc. reserves the right to reject any client (before or during the trip at the expense of the traveler) whose conduct is incompatible with the interest of the group. Landa Cleary Travel Co., Inc. is not responsible for lost persons and for the expenses incurred while being lost. Each traveler assumes responsibility for staying with the group.

Travelers with Special Needs: Passengers who require attention must advise the tour operator at the time of booking. A qualified and physically able companion must accompany travelers who need such assistance and must assume full responsibility for their well being. Coaches are not equipped with wheelchair accessible ramps, therefore all tour members must be able to mount 3 to 5 steps into the coach. **Participants should expect to walk between 1 and 3 miles in one day.** Walking surfaces may at times be uneven. Landa Cleary Travel Co., Inc. is not responsible for denial of service by any suppliers.

Young Travelers: Travelers who are less than 18 years old on the departure date must be accompanied by an adult and must share the adult's accommodations. If a child will be traveling with adults other than the parents or with only one parent, it is highly recommended that a notarized letter be written by the parents or non-traveling parent granting authorization to travel, including the dates of travel. We suggest that you also contact the appropriate consulate and airlines because they may have additional requirements.

Roommate Assignments: Landa Cleary Travel Inc. will make every reasonable attempt to find you a roommate. However, this is not guaranteed. If no roommate is found by the registration deadline, the passenger will have the option to upgrade to a single room (if available) by paying the single occupancy or cancel altogether with a full refund.

Air Transportation: We have selected airlines that are most suitable with land arrangements. All fares are subject to government approval and are subject to change without notice. Airfares are guaranteed once they have been paid in full and ticketed. Name changes required after tickets have been issued are subject to cancellation and re-ticketing at a higher fare and subject to change fees. Some airlines do not allow you to earn frequent flier miles for group bookings.

Airline Seating: Passengers who require specific seating due to medical conditions are advised to obtain Doctor's Orders so the airlines may have proof of the condition and may accommodate the order. In addition to making the request through our company, please bring the doctor's note to the ticket counter. Passengers who desire a specific non-medical related seat are requested to contact the airline directly 30 days prior to departure for preferred seating. Group seating is solely under control of the airline and Landa Cleary Company, Inc. can only pass on your requests.

Voluntary changes to itinerary: Independent voluntary changes to an individual passenger's itinerary are usually not permitted by most of our tour suppliers. Some exceptions may be granted in a case-by-case basis. All change requests must be made prior to 45 days before departure. If passenger purchased a land only package, they are free to plan their own itinerary before or after the trip (read Land Only bookings for restrictions).

Not Included: All items of a personal nature (room service, beverages, telephone charges, laundry, etc) and meals not specified on the tour itinerary are not included and must be paid by the passenger.

Accommodations and Itinerary: Land arrangements are provided as described in the tour program. The tour company reserves the right to change or substitute (1) hotels for accommodations in similar categories (2) or features of the itinerary in order to accommodate changes in the schedule.

Meals: Meals are provided as specified in the tour program. If you require special meals due to dietary restrictions, we must receive written details of your requirements at the time of booking. We cannot guarantee your requested diet but every effort will be made to accommodate these requests.

Passports: Obtaining a passport is the sole responsibility of the passenger. Passports must be current and valid beyond the dates of travel. **Your airline ticket name must match your passport name or you may be denied boarding the airplane.** Passengers who are denied boarding due to discrepancies between ticket and passport names or because of expired passports accept full responsibility and are subject to the cancellation terms of the tour. Some countries such as Israel require that your passport expiration be 6 months beyond your travel dates. **We recommend that you apply for your passports (if needed) at the time of registration.**

Smoking: Smoking is not allowed on the motor-coach but frequent stops are made throughout the day.

Tips: Gratuities for baggage, hotel and restaurants detailed in the itinerary are included. **Gratuities for Tour Guides, Local Guides and Motor-coach Drivers are NOT included** (unless otherwise stated in the brochure) Please see your "Essential Reading Material" (provided with your documents) for recommendations on tipping (usually \$11 per person, per day). Please budget accordingly.

Total Group Cancellation: If it becomes necessary to cancel an entire tour prior to departure, Landa Cleary Travel Co., Inc. will offer the next available date or will make a full refund of money paid. Landa Cleary Travel Co., Inc. cannot accept responsibility for any additional costs, fees or cancellation penalties relating to any independent non-refundable airfares (unless air reservation was booked as part of our negotiated group booking).

Land Only Bookings: Passenger(s) who desire to book their own airfare do at their own risk. Land only passengers are responsible for connecting with the group at the hotel. Passenger(s) accept all responsibility for costs incurred due to misconnections with the group. Landa Cleary Travel Co., Inc. cannot accept responsibility for any additional costs or fees relating to such a booking or for any cancellation penalties due to independent non-refundable airfare (even if Landa Cleary Travel Co. Inc. assisted with this booking).

Luggage: Handling of one piece of luggage per person is included in the cost of this tour wherever luggage service is offered (some hotels do not have bell captains). Luggage is carried at owner's risk throughout the tour (insurance suggested). Hand baggage and small articles such as coats, umbrellas or cameras are entirely in the care of the passenger. Size and weight limitations for carry-on and checked baggage vary from airline to airline and even according to destination, and are becoming more restrictive. Check your final documents for details of acceptable luggage dimensions and weight allowed on your tour. **All baggage and personal effects are at all times and in all circumstances at the risk of the passenger. Baggage insurance is recommended.**

Validity: Rates in this brochure are valid for the travel period stated on the brochure, and are quoted on a per person sharing twin/double room basis. All prices are show in U.S. Dollars and are calculated on currency rates and fares existing on **the day the brochure was made.** Landa Cleary Travel Co., Inc. reserves the right to alter prices at any time prior to departure and without prior notice due to currency exchange rates, taxes, fees or fuel surcharges increases.

Landa Cleary Travel Co., Inc. and all dba's are not responsible for misprints on the brochures as well as in Landacleary.com, Relevantjourneys.com and Materdeitours.com. Every effort is made to ensure brochure accuracy at the time of going to press, however Landa Cleary Travel Co., Inc. cannot be held responsible for printing or typographical errors, or errors arising from unforeseen circumstances. In the case of computer or human billing error we reserve the right to re-invoice passengers with correct billing.

Travel Insurance: Landa Cleary Travel Company, Inc. recommends travel insurance for your travel investment. You must purchase this insurance independently. We also recommend that travel insurance be purchased only after the minimum participation quorum has been met. Landa-Cleary Travel, Inc. agrees to notify the traveler when this occurs and when their deposit money is being charged or deposited. We recommend Travel Guard Insurance and other reputable travel insurance providers (like Travelex or Travel Safe). You may visit these insurance companies online. Make sure you check their strike list and alert list for situations or vendors that they are not covering (this list varies from time to time).



Airline transportation provided by:
LOT Polish Airlines

P.O. Box 323, Waunakee, WI 53597-0323
TEL. 608-849-4359 or 1-800-515-2632
Websites: www.materdeitours.com



7 STEP REGISTRATION
(Follow the numbered steps)



Mater Dei Tours™

POL SEP 2016 - MI

Poland, Militia of the Immaculata



September 6th - 17th, 2016

Step 1

1st Passenger Information

(PLEASE PRINT LEGIBLY IN BLOCK LETTERS)

Last Name (PLEASE PRINT LEGIBLY!!!!) ↑		First Name (PLEASE PRINT LEGIBLY) ↑		Middle ↑
Address ↑		City ↑	State ↑	Zip ↑
M or F				
Gender ↑	Phone Number(s) ↑	Email address (for faster communications) ↑		
Date of Birth ↑		Place of Birth (State, Country) ↑		
Comment/Requests:				

Step 2A

**** Please check your desired Room Occupancy below ** NOTE: US PASSPORT IS REQUIRED FOR TRAVEL!**

- Single Private Room | Sharing Room with 2nd person below | Sharing room (please find me a roommate) | Triple Occupancy
** Very limited * Please write your roommate's name on passenger 2 * We will do everything to assign you a roommate * Very limited*

2b

2nd Passenger Information (only if you have a second passenger)

(PLEASE PRINT LEGIBLY IN BLOCK LETTERS)

Last Name (PLEASE PRINT LEGIBLY!!!!) ↑		First Name (PLEASE PRINT LEGIBLY) ↑		Middle ↑
Address ↑		City ↑	State ↑	Zip ↑
M or F				
Gender ↑	Phone Number(s) ↑	Email address (for faster communications) ↑		
Date of Birth ↑		Place of Birth (State, Country) ↑		
Comment/Requests:				

3

3. A note about Travel Insurance

We recommend travel insurance to protect your travel investment. You must purchase this insurance independently. We also recommend that travel insurance be purchased only after the minimum participation quorum has been met. We will notify the traveler when this occurs and when your deposit money is being charged or deposited. We recommend **Travel Guard Insurance** and other reputable travel insurance providers (like Travelex or Travel Safe). You may visit these insurance companies online. Make sure you check their strike list and alert list for situations or vendors that they are not covering (this list varies from time to time).

I UNDERSTAND < please check here that you understand that if you wish to protect your trip with travel insurance, you need to contact Travel Guard or another insurance company directly once we notify you that your deposit has being charged.



Poland, Militia of the Immaculata
September 6th - 17th, 2016

POL SEP 2016 - MI



4. Tour Pricing Information

Tour Detail	* Cost per passenger (Please Check Choice)
AIR INCLUSIVE TOUR PACKAGE from CHICAGO (other cities may be available for an add-on price): Price per person based on double occupancy, sharing room with another passenger (2 people in 1 room). See brochure for other inclusions. (*) This price already includes US departure & entry taxes, airline fuel surcharges, foreign governments' entry and departure taxes, 911 security fees, immigration fees, custom fees, agriculture fees, airport fees, passenger facility charges and ticketing fees (about 14 different air taxes and fees in total) (Taxes and fees are beyond our control and are subject to change, thus affecting the price)	\$3,199* <input type="checkbox"/> Per person in double occupancy
OR Optional Land Only Package* This price does not include any air transportation. (Passenger assumes responsibility to be at the arrival airport in advance of the group. Please read "Land Only Bookings" in Terms & Conditions) * Rate shown is in double occupancy. For Single occupancy, please add the optional single supplement below.	\$2,495* <input type="checkbox"/> Per person in double occupancy
Optional Single Room Supplement: Single room occupancy, one room per person * (* room availability is very limited)	\$399 <input type="checkbox"/>
Optional Triple Room Discount: A small per person discount offered when 3 people are sharing 1 room with existing bedding * (room availability is extremely limited)	-\$20 <input type="checkbox"/>

Step 4

DEPOSIT REQUIREMENT (prior to deadline): \$500 per person ⇨ ⇨ ⇨ ⇨ ⇨ ⇨ ⇨ ⇨	\$ <i>deposit payment you wish to pay today</i>
Registration deadline May 27th, 2016 (unless space sells out sooner): Deposit Payment ⇨	

5

6a. Payment Information (Paying with a Check): ↓	
Make Checks or Money Orders Payable to: Landa Cleary Travel Co., Inc. <u>Registration Deadline: May 27th, 2016</u>	Mail Payments and Reservations to: Landa Cleary Travel Company, Inc. P.O. Box 323 Waunakee, WI 53597 <i>Or you may fax to: 1 608 849 4247</i>

6b. Payment Information (Paying with a Credit Card): ↓				
CARD HOLDER'S NAME (PLEASE PRINT): ⇨				
MasterCard or Visa	<input type="text"/>	MM / YYYY	Last 3 digits in signature box	
Credit Card Type ↑	Credit Card Number ↑	Expiration Date ↑	3 Digit Security Code on back of card ↑	
Your Billing Address ↑ (where the credit card sends you your bill)		City ↑	State ↑	Zip ↑

6

7. Please check mark: I have received, read, understand and agree to the Terms and Conditions of this tour

X _____	_____	X _____	_____
Signature of Traveler #1	Date	Signature of Traveler #2 (if you have a 2nd passenger)	Date

7

With my signature above, I declare that all persons listed on this reservation form have read, understand and accept the terms and conditions of this tour. I agree to pay according to the terms and conditions. I declare that I am in good physical health and am able to travel without assistance unless I provide a full time assistant at my own expense. I understand that this pilgrimage may require walking (sometimes from one to possibly as many as three miles in one visit).