

PROJECT:	DATE:
CAT. NO.:	TYPE:
NOTES	VOLTS:

GENERAL DESCRIPTION:

Peerless LDX is an architectural linear specification-grade luminaire suitable for suspended or wall-mounted applications. Available individually or for row mounting. Available either as downlight or up and downlight with a variety of distributions. Available in 4ft and 8ft lengths.

CONSTRUCTION:

Rigid body construction from code gauge steel. Standard finish is white polyester powder coat paint. Baked white enamel. Other colours available upon request.

SHIELDING:

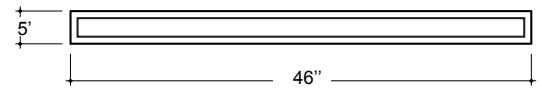
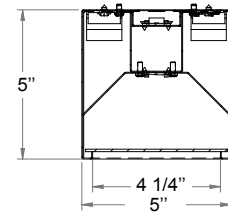
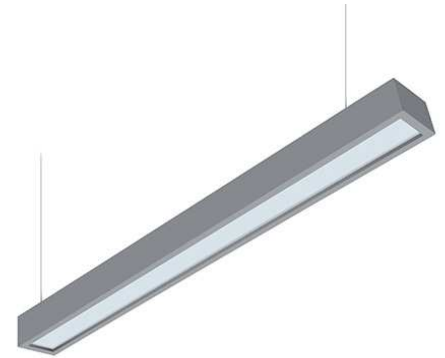
Standard shielding is frosted acrylic. Options include #12 lens and #12F frosted lens.

ELECTRICAL:

Long-life LEDs and high efficiency drivers deliver L80 performance at 60,000 hours minimum. Dimming options available. 120-277V, 347V.

CERTIFICATIONS:

Approved to UL 1598 and CSA C22.2 No 250 standards. Rated for damp locations.



Ordering Information

SERIES	DISTRIBUTION*	SECTION LENGTH	LED LUMENS OUTPUT **	COLOUR (KELVIN)	SHIELDING	FINISH (COLOUR)	SUSPENSION	LENGTH	VOLTAGE	BALLAST/DRIVER
LDX-V1	DIR = 100% down DIN1 = 60% up / 40% down DIN6 = 50% up / 50% down DIN8 = 35% up / 65% down	4 = 4' 8 = 8'	48 = 4800 (4 ft) 57 = 5700 (4 ft) 96 = 9600 (8 ft) 114 = 11400 (8 ft)	30K = 3000K 35K = 3500K 40K = 4000K 50K = 5000K	FA = Frosted Acrylic 12 = #12 lens 12F = #12 Frosted lens	WH = White *** WM = Matte White *** GR = Grey *** BLK = Black *** *** white canopy & cord if A/C application	AC = Aircraft Cable	48 = 48' or Specify Length	MV (120-277V) 347V	OMIT for no dimming D1 = LED dimming driver (down to 1%) D10 = LED dimming driver (down to 10%) SD = Step-dimming driver (100-50%)

* Other distributions available. Consult Factory.
** Other lumen options available. Consult Factory.