

New from Schmidt



SC58213 - Midnight Rose
1000pc £13.00



SC58207 - Gumpert's Flying Machine
1000pc £13.00



SC58166 - Ice Fairy
1000pc £13.00



SC59512 - A City on the Wing
1000pc £13.00

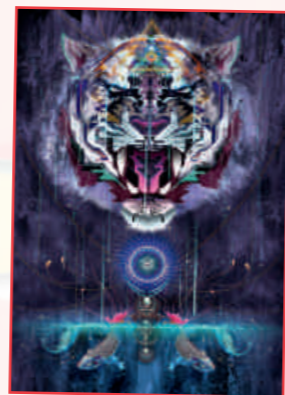
SC59274 - Air Ships -
Ciro Marchetti
500pc £9.00



SC59305 - Moated Castle -
Ciro Marchetti
2000pc £20.00



SC58188 - Jungle Tigers
1500pc £17.00



SC59323 - Snarling Tiger -
Chris Saunders
1000pc £13.00



SC58210 - In the Fairy Garden
1500pc £17.00

New from This England



TEMJRP9 - London by LNER London's Hyde
Park in Victorian Times
1000pc £14.00



TEMJRP10 - London. Feeding the
Pigeons, Trafalgar Square
1000pc £14.00



TEMJRP11 - London by LMS.
Trooping the Colour, Whitehall
1000pc £14.00



TEMJRP15 - Downland Rambles.
An evening scene at Beachy Head, Sussex
1000pc £14.00



TEMJRP13 - The Cotswolds. A view towards
Cheltenham, Gloucestershire
1000pc £14.00



TEMJRP14 - After the show, Southport.
1000pc £14.00



TEMJRP16 - Scotland for your Holidays.
The Forth Bridge, near Edinburgh
1000pc £14.00

Also New



G4030 - Sunshine and Steam by Philip D Hawkins
636pc Panorama £11.00



G7065 - Buckingham Palace
1000pc - £13.00



C32552 - L'Enoteca
2000pc - £22.00

READERS LETTERS

I notice from the Reader's letters section (Issue 114), that Mr Taylor of Buckinghamshire wishes manufacturers would do something on contemporary trains, like Eurostar. By coincidence, I'm already working on just that, and it will be ready for this autumn. It's a scene of St Pancras showing the Eurostar, with the iconic station clock in the background. It's a 1000pc puzzle, but I plan to take the Eurostar image (done as a separate painting) and use it as a 500-piece, as Mr Taylor requests.

I'd be grateful if you'd pass on any other feedback from members. I'm in regular contact with a number of our consumers and value their thoughts and opinions. Feedback (positive or negative) is always very welcome, and it's something I genuinely listen to. I've been doing this job for a long time (30 years) but I'm aware that there's always more to learn!

Sarah Stevens, Product Manager, Ravensburger Ltd.

Thank you Sarah for taking the time to write to us, and I'm sure a lot of our members will be pleased to hear about the new puzzle, not just Mr Taylor. We look forward to seeing it in the Autumn.

JIG'S CORNER

I hope you all had a very Happy Easter and enjoyed the few days of glorious sunshine that we were lucky to have. Did any of you manage to get to any jigsaw festivals? We would love to hear from you if you did.

I'm liking the sound of that train puzzle from Ravensburger; but in the meantime I really love the new Railway Poster Jigsaws – they bring back a lot of memories of traveling as a child (best not say too much – don't want to give away my age...!). If any of you get the chance to visit the National Rail Museum in York or Co Durham you can get to see some of the original posters.

Keep puzzling!

Jig

DATES FOR YOUR DIARY

Charity Jigsaw Festival, supporting local charity
'Together for Looked-after Children'

St. Martin's Parish Church, Brighouse, HD6 1AT

Friday 28th to Monday 31st August 2015
Friday, Saturday, Monday - 10.00am to 5.00pm
Sunday - 12 noon to 5.00pm

Admission to the Festival is £2 for Adults with accompanied children free.

Jig Fact

By 1974, most of the surviving brands of wood puzzles had disappeared, and even the English "Victory" puzzles, which had been easily found in department stores in the 1950s and 1960s, had almost completely vanished.

WINNING WAYS ISSUE 114

Congratulations to everyone who knew that VE day came first – 8th May 1945. Thank you for all your entries and congratulations to Mrs Jill Lee from Middlesex. Your puzzle is on its way.

Issue 116

This month - Following on from last month's popular Clementoni puzzles, have a go at finding the related words in the Wordsearch. Please let us know which one of the words is NOT included in it.

Austria Bunny Cat Disney Earring Istanbul
Japan Labrador Last Supper Milano
New Zealand Panorama Pearl Peter Pan
Roma Romantic Sumatran Taj Mahal
The Beatles Venezia

T	Q	G	T	L	A	H	A	M	J	A	T
A	H	U	N	A	R	T	A	M	U	S	A
R	L	E	S	I	J	A	P	N	L	L	D
E	V	W	B	V	R	A	E	A	B	A	N
P	Z	M	U	E	Y	R	R	P	I	B	A
P	K	I	N	N	A	S	A	R	C	R	L
U	J	L	N	E	U	T	T	E	Y	A	A
S	V	A	Y	Z	T	S	L	T	E	D	E
T	I	N	P	I	U	A	F	E	N	O	Z
S	R	O	M	A	H	G	C	P	S	R	W
A	I	S	T	A	N	B	U	L	I	D	E
L	A	M	A	R	O	N	A	P	D	E	N

A winner will be selected at random from the correct answers. Answers by 31st May 2015. Please remember to let us know your choice of puzzle up to 1000 piece.