

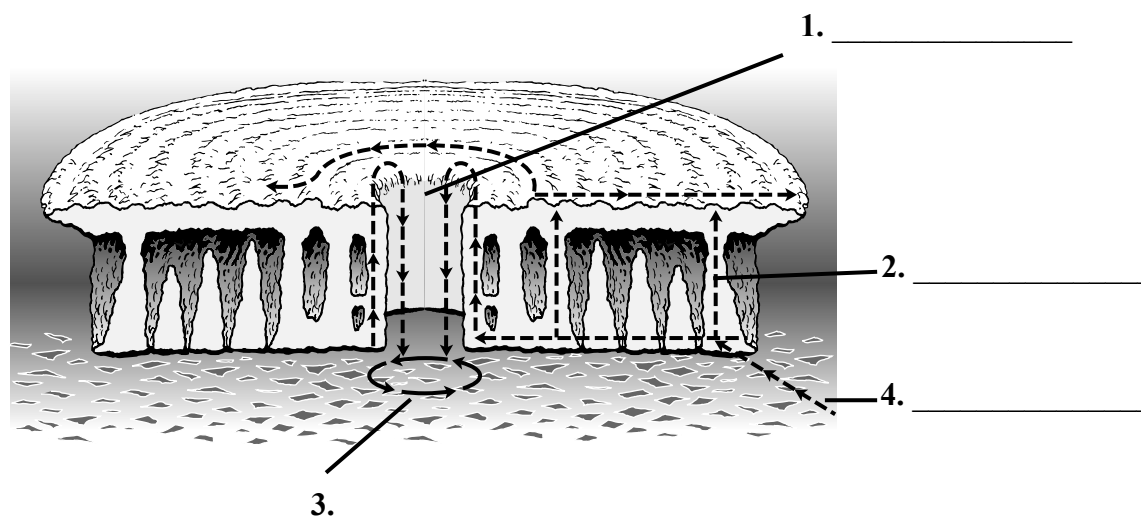
**Weather**

**Review and Reinforce 8.4**

**Storms**

**Understanding Main Ideas**

Fill in each blank in the diagram with one of the following phrases: path of hurricane; eye of hurricane; warm, moist air; wind direction.



Answer the following questions on a separate sheet of paper.

5. Why should you be on the lookout for tornadoes during a severe thunderstorm?
6. Why should you avoid touching metal objects during a thunderstorm?
7. Where is the safest place to be during a tornado?
8. Why does a hurricane lose strength when it passes over land?
9. What should you do if you are caught in a snowstorm?

**Building Vocabulary**

Match each term with its definition by writing the letter of the correct definition on the line beside the term.

- |                       |  |
|-----------------------|--|
| ____ 10. thunderstorm | a. a tropical storm that has winds of 119 kilometers per hour or higher  |
| ____ 11. lightning    | b. a sudden spark, or electrical discharge, between parts of a cloud, between nearby clouds, or between a cloud and the ground |
| ____ 12. tornado      | c. a small storm accompanied by thunder and lightning and often by precipitation   |
| ____ 13. hurricane    | d. a rapidly whirling, funnel-shaped cloud that reaches down from a storm cloud to touch Earth's surface                       |
| ____ 14. storm surge  | e. a "dome" of water that sweeps across the coast where a hurricane lands  |