

Return to:
City of Missoula
City Clerk
435 Ryman
Missoula, MT 59802

CERTIFICATE AS TO RESOLUTION AND ADOPTING VOTE

I, the undersigned, being the duly qualified and acting recording officer of the City of Missoula, Montana (the "City"), hereby certify that the attached resolution is a true copy of a Resolution entitled: "A RESOLUTION RELATING TO SPECIAL IMPROVEMENT DISTRICT NO. 541 FOR PINE VIEW PARK; DECLARING IT TO BE THE INTENTION OF THE CITY COUNCIL TO CREATE THE DISTRICT FOR THE PURPOSE OF UNDERTAKING CERTAIN IMPROVEMENTS AND FINANCING THE COSTS THEREOF AND INCIDENTAL THERETO THROUGH THE ISSUANCE OF SPECIAL IMPROVEMENT DISTRICT BONDS SECURED BY THE CITY'S SPECIAL IMPROVEMENT DISTRICT REVOLVING FUND" AND TO ACCEPT OWNERSHIP OF PINE VIEW PARK AS A CITY PARK (the "Resolution"), on file in the original records of the City in my legal custody; that the Resolution was duly adopted by the City Council at a regular meeting on October 23, 2006. The meeting was duly held by the City Council and was attended throughout by a quorum, pursuant to call and notice of such meeting given as required by law; and that the Resolution has not as of the date hereof been amended or repealed.

I further certify that, upon vote being taken on the Resolution at said meeting, the following Council Members voted in favor thereof: Ballas, Childers, Hendrickson, Jaffe, Kendall, Marler, Nicholson, Reidy, Strohmaier, and Wilkins; voted against the same: none; abstained from voting thereon: none; or were absent: Haines and Rye.

WITNESS my hand officially this 23rd day of October, 2006.

/s/ Martha L. Rehbein
Martha L. Rehbein, City Clerk

RESOLUTION NUMBER 7173

A RESOLUTION RELATING TO SPECIAL IMPROVEMENT DISTRICT NO. 541 FOR PINE VIEW PARK; DECLARING IT TO BE THE INTENTION OF THE CITY COUNCIL TO CREATE THE DISTRICT FOR THE PURPOSE OF UNDERTAKING CERTAIN IMPROVEMENTS AND FINANCING THE COSTS THEREOF AND INCIDENTAL THERETO THROUGH THE ISSUANCE OF SPECIAL IMPROVEMENT DISTRICT BONDS SECURED BY THE CITY'S SPECIAL IMPROVEMENT DISTRICT REVOLVING FUND" AND TO ACCEPT OWNERSHIP OF PINE VIEW PARK AS A CITY PARK

WHEREAS, Pine View Park located near Rattlesnake School in the City of Missoula was dedicated as a public park in conjunction with the filing of the Plat (the "Plat") for the Pine View Homes Addition in Missoula County, Montana ("the County") on August 5, 1960.

WHEREAS, the County Board of Commissioners (the "Commissioners") created Rural Special Improvement District No. 902 on May 23, 1972, (the "RSID") for the purpose of paying the costs of maintaining Pine View Park;

WHEREAS, the Commissioners, pursuant to a Resolution adopted on December 7, 1972 acknowledged the creation of the Pine View Park Association and named three members thereof as Trustees whose responsibility, together with the offices of the Associations, was to assist, oversee, and be responsible for the maintenance, preserving, or repairing said Park improvements.

WHEREAS, the Commissioners have levied assessments against the property in RSID No. 902 for the costs of maintaining Pine View Park as a County Park;

WHEREAS, subsequent to the filing of the Plat, the properties located within the boundaries of RSID No. 902 as well as Pine View Park were annexed to the City; however, the County has continued to own Pine View Park and its maintenance has been overseen by the Pine View Park Board and funded by assessments against the property in RSID 902 using an existing RSID maintenance district; and

WHEREAS, Pine View Park is an established neighborhood park as defined in the Urban Area for Parks and Recreation Master Plan (the "Plan") adopted by the City Council in May 2004 and meets almost all criteria for a neighborhood park as defined in the Plan;

WHEREAS, Pine View Park, the legal description of which is shown on Exhibit B, provides for residents of the mid and upper Rattlesnake neighborhoods (extending beyond the limits of the RSID No. 902) with multi-use recreating facilities including tennis, picnicking, skating, playing fields, playgrounds, and convenient parking; and

WHEREAS, the amount of revenue that can be derived from the assessments under RSID No. 902 as currently created are insufficient to continue to maintain and manage Pine View Park to acceptable and safe standards or provide any improvements to the Park; and

WHEREAS, the Pine View Park Association, in consultation with users of Pine View Park and the City of Missoula Parks and Recreation Department have identified needed improvements to the Park that would enable it to be maintained as a City Park; and

WHEREAS, it has been proposed by the members of the Board of the Pine View Park Association that the City create a special improvement district to finance the costs of those improvements; and that the City accept ownership of Pine View Park and maintain it as any other City Park; and

WHEREAS, the County has agreed to transfer the ownership of Pine View Park so the City upon the creation of a special improvement District and the County will no longer levy assessments for the maintenance of Pine View Park under RSID 902;

WHEREAS, on July 15, 1974, the County was deeded a parcel of land known as Tom Green Memorial Park on the condition that it be maintained as a natural public park with Pine View Park Association being given the right to enforce the restrictive covenants of the grantor with respect to the Park;

WHEREAS, pursuant to an opinion of the County Attorney dated August 9, 1973, the County expanded the scope of RSID No. 902 to include the costs of maintaining Tom Green Memorial Park ("Tom Green Park");

WHEREAS, it is the County's intention to retain ownership of the Tom Green Park and will continue to levy assessments under RSID No. 902 in amounts necessary (as determined by the Park View Park Association) to maintain the Tom Green Park, with annual assessments to be about 25% of the current assessments for both parks, or \$3,675 annually.

NOW THEREFORE BE IT RESOLVED by the City Council (the "Council") of the City of Missoula (the "City"), Montana, as follows:

Section 1. Proposed Improvements; Intention to Create District. The City proposes to undertake or cause to be undertaken certain local improvements (the "Improvements") to benefit certain property located in the City. The Improvements consist of design, engineering, construction and installation of improvements and renovation of a neighborhood public park commonly known as Pine View Park, and related improvements, as more particularly described in Section 5. The total estimated costs of the Improvements are \$641,500. All of the costs of the Improvements are to be paid from the special improvement district bonds. It is the intention of this Council to create and establish in the City under Montana Code Annotated, Title 7, Chapter 12, Parts 41 and 42, as amended, a special improvement district (the "District") for the purpose of financing the costs of the Improvements and paying costs incidental thereto, including costs associated with the sale and the security of special improvement district bonds drawn on the District (the "Bonds"), including the creation and administration of the District, and the funding of a deposit to the City's Special Improvement District Revolving Fund (the "Revolving Fund"). The total estimated costs of the Improvements, including such incidental costs, to be financed by the Bonds is estimated to be \$750,000. The Bonds are to be payable from special assessments to be levied against property in the District, which property will be specially benefited by the Improvements in an amount not less than \$750,000.

Section 2. Number of District. The District, if the same shall be created and established, shall be known and designated as Special Improvement District No. 541 of the City of Missoula, Montana.

Section 3. Boundaries of District. The limits and boundaries of the District shall encompass all the parcels of land legally described on the attached Exhibit A (which is hereby incorporated herein and made a part hereof) and more particularly depicted by the lines circumscribing the properties shown on the map attached as Exhibit B (which is hereby incorporated herein and made a part hereof), which boundaries are designated and confirmed as the boundaries of the District. A listing of each of the properties in the District is shown on Exhibit A hereto (which is hereby incorporated herein and made a part hereof).

Section 4. Benefited Property. The proposed Improvements are of more than local or ordinary public benefit and thus expenses of the Improvements may be charged against properties not abutting the Improvements Extended District. The District and territory included within the limits as shown on Exhibits A and B, are hereby declared to be the special improvement district and the territory that will benefit from and be benefited by the Improvements and will be assessed for the costs of the Improvements as described herein.

Section 5. General Character of the Improvements. The Pine View Park Association has identified the following improvements in order of priority: restrooms, playground equipment, irrigation/walkway renovations, two tennis court replacements, ice rink improvements, storage facility, basketball/multi-sport court replacement, playing field improvements, picnic shelter replacement, additional tennis court, and lighting (evening use), , to be situated on or immediately adjacent to the Park as more particularly shown on Exhibit C. The estimated costs of those improvements, including architect and engineering costs, are estimated to be \$641,500. In the event the actual costs of the identified Improvements exceeds the amount of money available therefore the City will fund the Improvements in order of the established priority.

Section 6. Architect/Engineer and Estimated Cost. The Architect/Engineer has estimated the total costs of the Improvements, including all incidental costs, are \$641,500 and the costs of the Improvements to be financed by the proceeds of the Bonds, including costs associated with the sale and security thereof, are \$750,000.

Section 7. Assessment Methods.

7.1 Method; Property to be Assessed. All properties within the District are to be assessed for a portion of the costs of the Improvements and incidental costs, as specified herein. The costs of the Improvements shall be assessed against the property in the District benefiting from the Improvements, based on the equal-amount method of assessment described in Section 7-12-4162(3), M.C.A., as applied and set forth in this Section 7.

7.2 Equal Amount. All properties in the District other than the Park, and properties identified as parks or open space and utilities, and exclusive of public rights of way, will be assessed for their proportionate share of the total costs of the Improvements financed with the Bonds benefiting such properties, including incidental costs. The total estimated cost of the Improvements, including incidental costs, to be paid for by the Bonds is estimated to be \$750,000 and shall be assessed against each lot, tract or parcel of land in the District in an equal amount for that part of the costs of the Improvements, including incidental costs, that each lot, tract or parcel bears to the total number of lots, tracts or parcels of land in the District, except the excluded property. As of the date hereof, the total number of the lots, tracts or parcels in the District and to be so assessed is 1,748. The costs of the Improvements and incidental costs to be assessed per lot, tract, or parcel are estimated to be \$429.

7.3 Assessment Methodology Equitable and Consistent with Benefit. This Council hereby determines that the method of assessment and the assessment of costs of the specific Improvements against the properties benefited thereby as prescribed in this Section 7 are equitable and in proportion to and not exceeding the special benefits derived from the respective Improvements by the lots, tracts and parcels to be assessed therefore within the District.

Section 8. Payment of Assessments. The special assessments for the costs of the Improvements shall be payable over a term not exceeding twenty years, each in equal semiannual installments of principal, plus interest, or equal to semiannual payments of principal and interest, as this Council shall prescribe in the resolution authorizing the issuance of the Bonds. Property owners have the right to prepay assessments as provided by law. The estimated total principal amounts of special assessments against properties in the District are shown on the attached Exhibit B. *Such amounts are estimates only and are exclusive of interest.* In the event the District is created and the Bonds are issued, the special assessments levied against properties in the District will be stated as semiannual installments of principal and interest over a term of up to 20 years.

Section 9. Method of Financing; Pledge of Revolving Fund; Findings and Determinations. The City will issue the Bonds in an aggregate principal amount not to exceed \$750,000 in order to finance the costs of the Improvements. Principal of and interest on the Bonds will be paid from special assessments levied against the properties in the District. This Council finds it is in the public interest, and in the best interest of the City and the District, to secure payment of principal of and interest on the Bonds

by the Revolving Fund and hereby authorizes the City to enter into the undertakings and agreements authorized in Section 7-12-4225, M.C.A., in respect of the Bonds.

In determining to authorize such undertakings and agreements, this Council has taken into consideration the following factors:

(a) Estimated Market Value of Parcels. The City has considered the estimated market value of the lots, parcels or tracts in the District as of the date of adoption of this resolution, as estimated by the County Assessor, as well as the estimated market value of the lots, parcels or tracts after the Improvements have been completed. The estimated market value of each lot, tract, or parcel in the District is well in excess of assessment to be levied against the same. The City, in conjunction with the Architect/Engineer, has determined that the value of the properties in the District will be enhanced by the Improvements.

Diversity of Property Ownership. Exhibit B shows that substantially all properties are individually owned by numerous persons, unrelated to each other. The City finds that the diverse and unrelated property ownership makes it less likely that financial difficulties of one or several owners will require recourse to the Revolving Fund.

(b) Comparison of Special Assessments and Property Taxes and Market Value. The City has compared the estimated market value of each lot, tract, and parcel in the District after the Improvements are made to the amount of the proposed special assessments against each lot, tract, and parcel in the District. The estimated market value of each lot, tract, and parcel in the District after the Improvements are made is in excess of the proposed special assessments against each lot, tract, and parcel in the District.

(c) Outstanding Taxes and Assessments. A number of parcels in the District are included in other special improvement districts and subject to other special assessments. In particular, 40 of the lots are located in SID 533, 45 of the lots are located in SID 534 and 73 of the lots are located in SID 536, which districts were created for the purpose of installing sanitary sewer improvements. These assessments were based on the area method of assessments. The assessments range from \$2,515 to \$17,570.

(d) Delinquencies. Assessments have just now been levied for SID 534 and 536 and payments are not yet due. There are no delinquencies in SID 533. The rate of delinquent taxes in the District is no greater than throughout the City and is less than 3%.

(e) The Public Benefit of the Improvements. The Improvements are of special benefit to the mid and upper Rattlesnake neighborhood and satisfy an important need in the City to encourage and maintain adequate neighborhood parks, which benefits the City as a whole. The City has agreed to accept and maintain the Park.

(f) New Subdivision. The District consists primarily of older, platted subdivisions which are essentially fully developed. Of the newer subdivisions substantially all of the parcels have been sold.

(g) Other factors. The Pine View Park Association which was created to oversee the maintenance of the Park as well as numerous other citizens using and benefiting from the park have requested that this Special Improvement District be created for the purpose of financing the improvements to the Park.

Section 10. Reimbursement Expenditures.

10.1 Regulations. The United States Department of Treasury has promulgated final regulations governing the use of proceeds of tax-exempt bonds, all or a portion of which are to be used to reimburse the City for project expenditures paid by the City prior to the date of issuance of such bonds. Those regulations (Treasury Regulations, Section 1.150-2) (the "Regulations") require that the City adopt a statement of official intent to reimburse an original expenditure not later than 60 days after payment of the original expenditure. The Regulations also generally require that the bonds be issued and the reimbursement allocation made from the proceeds of the bonds within 18 months (or three years, if the reimbursement bond issue qualifies for the "small issuer" exception from the arbitrage rebate requirement) after the later of (i) the date the expenditure is paid or (ii) the date the project is placed in service or abandoned, but (unless the issue qualifies for the "small issuer" exception from the arbitrage rebate requirement) in no event more than three years after the date the expenditure is paid. The Regulations generally permit reimbursement of capital expenditures and costs of issuance of the bonds.

10.2 Prior Expenditures. Other than (i) expenditures to be paid or reimbursed from sources other than the Bonds, (ii) expenditures constituting preliminary expenditures within the meaning of Section 1.150-2(f)(2) of the Regulations, or (iii) expenditures in a "de minimus" amount (as defined in Section 1.150-2(f)(1) of the Regulations), no expenditures for the Improvements have been paid by the City before the date 60 days before the date of adoption of this resolution.

10.3 Declaration of Intent. The City reasonably expects to reimburse the expenditures made for costs of the Improvements out of the proceeds of Bonds in an estimated maximum aggregate principal amount of \$675,000 after the date of payment of all or a portion of the costs of the Improvements. All reimbursed expenditures shall be capital expenditures, a cost of issuance of the Bonds or other expenditures eligible for reimbursement under Section 1.150-2(d)(3) of the Regulations.

10.4 Budgetary Matters. As of the date hereof, there are no City funds reserved, allocated on a long-term basis or otherwise set aside (or reasonably expected to be reserved, allocated on a long-term basis or otherwise set aside) to provide permanent financing for the expenditures related to the Improvements, other than pursuant to the issuance of the Bonds. The statement of intent contained in this resolution, therefore, is determined to be consistent with the City's budgetary and financial circumstances as they exist or are reasonably foreseeable on the date hereof.

10.5 Reimbursement Allocations. The City's Treasurer shall be responsible for making the "reimbursement allocations" described in the Regulations, being generally the transfer of the appropriate amount of proceeds of the Bonds to reimburse the source of temporary financing used by the City to make prior payment of the costs of the Improvements. Each allocation shall be evidenced by an entry on the official books and records of the City maintained for the Bonds or the Improvements and shall specifically identify the actual original expenditure being reimbursed.

Section 11. Public Hearing; Protests. At any time within fifteen (15) days from and after the date of the first publication of the notice of the passage and approval of this Resolution, any owner of a lot, tract, or parcel within the District subject to assessment and taxation for the cost and expense of making the Improvements may make and file with the City Clerk until 5:00 p.m., MT, on the expiration date of said 15-day period November 27, 2006 written protest against the proposed Improvements, or against the creation of the District. For purposes of calculating protests under Section 7-12-4113, M.C.A., the sufficiency or insufficiency of protests, if any, shall be based on the estimated cost of the assessments against the properties owned by the protestors in the District as compared to the total estimated cost of the assessments against all properties in the District. This Council will at its next scheduled meeting after the expiration of the fifteen (15) days as extended in accordance with Section 7-10-4110, M.C.A., in which such protests in writing can be made and filed, proceed to hear all such protests so made and filed; which said meeting will be held on Monday, the 27th day of November, 2006, at 7:00 p.m. in the City Council Chambers, 140 W. Pine Street, in Missoula, Montana.

Section 12. Notice of Passage of Resolution of Intention. The City Clerk is hereby authorized and directed to publish or cause to be published a copy of a notice of the passage of this resolution in

The Missoulian, a newspaper of general circulation in the county, in substantive form attached hereto as Exhibit D which is incorporated by reference on November 5, 2006 and November 12, 2006, in the form and manner prescribed by law, and to mail or cause to be mailed a copy of said notice to every person, firm, corporation, or agent of such person, firm or corporation having real property within the District listed in his or her name upon the last completed assessment roll for state, county, and school district taxes, at his or her last known address, on the same day such notice is first published (or earlier date).

PASSED AND ADOPTED by the City Council of the City of Missoula, Montana, this 23rd day of October, 2006.

/s/ John Engen

John Engen

Mayor

Attest:

/s/ Martha L. Rehbein

Martha L. Rehbein

City Clerk

Exhibit A

List of Properties in the District by Legal Description

GEOCODE	DOR GEO ID	TAX ID	GIS_AREA	CARD	LC	LEVY	NRHD	PROF_TYP	SEPRV_CODE	OWNR_NAME	BUTR_NAME	PROP_ADDRE	ZIP	MAILING1	MAILING2	MAILING3	CITY	ST	ZIP 2	LEGAL_DESC	SOFT_TOTL	MRKT_VALUE	
220022125170000	220022125170000	2184007	914661	01	R	0583	4	C	RU	3501		01240 W GREENOUGH DR	59802	1240 GREENOUGH DR W			MISSOULA	MT	59802-3745	IN NE4 NE4 22-13-19	0	2	\$361,200
220022125150000	220022125150000	2137306	5904	01	R	0583	4	C	RU	3501		01100 W GREENOUGH DR	59802	1100 GREENOUGH DR W			MISSOULA	MT	59802-3743	IN NE4 NE4 PLAT K 22-13-19 .31 AC	13640	0	\$141,600
220022125130000	220022125130000	665102	204740	01	R	0583	4	C	RU	3501		01006 W GREENOUGH DR	59802	1006 GREENOUGH DR W			MISSOULA	MT	59802-3741	IN NE4 NE4 PLAT M 22-13-19 5.9 AC	0	6	\$209,300
220022124070000	220022124070000	3094409	197300	01	C	0583	4	C	CU	3507		01101 W GREENOUGH DR	59802	1720 PEGGIO LN APT 3			MISSOULA	MT	59802-3676	TRACT A COS 3985 IN NW1/4 NE1/4 NE1/4 PLAT A3 22-13-	19602	0	\$821,103
220022124050000	220022124050000	5829286	646521	01	C	0583	4	C	CU	3507		01101 W GREENOUGH DR	59802	1720 PEGGIO LN APT 3			MISSOULA	MT	59802-3676	PARCEL A COS 1493 LESS COS 398 5 IN NW1/4 NE1/4 NE1/4	64469	0	\$1,538,486
220022124030000	220022124030000	5829291	563731	01	C	0583	4	C	CU	3507		01101 W GREENOUGH DR	59802	1720 PEGGIO LN APT 3			MISSOULA	MT	59802-3676	IN NE1/4 NE1/4 PLAT A 22-13-19 1AC	57321	0	\$1,411,051
220022124020000	220022124020000	1756567	330241	01	C	0583	4	VU						59802	1720 PEGGIO LN APT 3		MISSOULA	MT	59802-3676	IN NE4 NE4 PLAT A 22-13-19 2.556AC	0	3	\$166,448
220015404180000	220015404180000	3537804	568401	01	C	0583	4	C	CU	3507		01720 PEGGIO LANE	59802	1720 PEGGIO LN APT 3			MISSOULA	MT	59802-3676	LOT 4 OF RATTLENAKE HILLS EST ATES PHASE 3 15-13-19	5695	0	\$340,119
220015407170000	220015407170000	3421306	522101	01	C	0583	4	C	CU	3507		01794 ELISON LN	59802	1720 PEGGIO LN APT 3			MISSOULA	MT	59802-3676	LOT 17 BK 4 OF RATTLENAKE HILLS ESTATES PHASE #2 1	5225	0	\$354,731
220015407160000	220015407160000	3421200	508701	01	C	0583	4	C	CU	3507		01792 ELISON LN	59802	1720 PEGGIO LN APT 3			MISSOULA	MT	59802-3676	LOT 16 BK 4 OF RATTLENAKE HILLS ESTATES PHASE #2 1	5092	0	\$354,665
220015407150000	220015407150000	3421104	536801	01	C	0583	4	C	CU	3507		01790 ELISON LN	59802	1720 PEGGIO LN APT 3			MISSOULA	MT	59802-3676	LOT 15 BK 4 OF RATTLENAKE HILLS ESTATES PHASE #2 1	5306	0	\$339,633
220015407140000	220015407140000	3421008	534301	01	C	0583	4	C	CU	3507		01788 ELISON LN	59802	1720 PEGGIO LN APT 3			MISSOULA	MT	59802-3676	LOT 14 BK 4 OF RATTLENAKE HILLS ESTATES PHASE #2 1	5348	0	\$333,685
220015407130000	220015407130000	3420900	534301	01	C	0583	4	C	CU	3507		01786 ELISON LN	59802	1720 PEGGIO LN APT 3			MISSOULA	MT	59802-3676	LOT 13 BK 4 OF RATTLENAKE HILLS ESTATES PHASE #2 1	5348	0	\$333,685
220015407120000	220015407120000	3420804	523601	01	C	0583	4	C	CU	3507		01784 ELISON LN	59802	1720 PEGGIO LN APT 3			MISSOULA	MT	59802-3676	LOT 12 BK 4 OF RATTLENAKE HILLS ESTATES PHASE 2 15	5241	0	\$333,451
220015407110000	220015407110000	3420708	508701	01	C	0583	4	C	CU	3507		01782 ELISON LN	59802	1720 PEGGIO LN APT 3			MISSOULA	MT	59802-3676	LOT 11 BK 4 OF RATTLENAKE HILLS ESTATES PHASE 2 15	5092	0	\$330,265
22001540710000	22001540710000	3420602	511701	01	C	0583	4	C	CU	3507		01780 ELISON LN	59802	1720 PEGGIO LN APT 3			MISSOULA	MT	59802-3676	LOT 10 BK 4 OF RATTLENAKE HILLS ESTATES PHASE 2 15	5122	0	\$329,403
220015404130000	220015404130000	3194006	892117	01	R	0583	4	AR						59802	1780 ELISON LN		MISSOULA	MT	59802-3611	REMAINDER OF PORTION OF COS 4199 IN SEC 22. 13-19-	0	21	\$92,408
220015404110000	220015404110000	3193408	869157	01	R	0583	4	VR						59802	1780 ELISON LN		MISSOULA	MT	59802-3611	TR 1 COS 4199 IN SW4 SE4 15-13-19	0	20	\$923
220015404090000	220015404090000	3193504	607888	01	R	0583	4	VR				01725 ELISON LN	59802	1780 ELISON LN			MISSOULA	MT	59802-3611	PORTION OF TRACT 2 COS 4199 IN S2 SE4 SEC. 15. 13-19-	0	14	\$653
220015404070000	220015404070000	3193600	630114	01	R	0583	4	VR						59802	1780 ELISON LN		MISSOULA	MT	59802-3611	PORTION OF TRACT 3 COS 4199 IN SE4 IN SEC. 15. 13-19-	0	14	\$662
220015404050000	220015404050000	3193706	606020	01	R	0583	4	VR						59802	1780 ELISON LN		MISSOULA	MT	59802-3611	RATTLENAKE HILLS ESTATES PHAS E 3 LOT 4A	0	15	\$691
220015404030000	220015404030000	3193820	882608	01	R	0583	4	AR						59802	1780 ELISON LN		MISSOULA	MT	59802-3611	RATTLENAKE HILLS ESTATES PHAS E 3 LOT 5A	0	20	\$938
220015404010000	220015404010000	3193908	872820	01	R	0583	4	AR						59802	1780 ELISON LN		MISSOULA	MT	59802-3611	TR 6 COS 4199 IN N2 SE4 SEC. 1 5, 13-19-	0	20	\$927
220015403312000	220015403312000	145809	238651	01	R	0583	4	VU				01728 TRAYNOR DR	59802	1826 TRAYNOR DR			MISSOULA	MT	59802-3636	TRAYNOR-LOT 1	24300	0	\$79,375
220015403140000	220015403140000	145905	253371	01	R	0583	4	RU	3501			01820 TRAYNOR DR	59802	1826 TRAYNOR DR			MISSOULA	MT	59802-3636	TRAYNOR-PT OF LOT 2	25307	0	\$279,800
220015403060000	220015403060000	1751200	177651	01	R	0583	4	RU	3501			01818 TRAYNOR DR	59802	1818 TRAYNOR DR			MISSOULA	MT	59802-3636	TRAYNOR-PT OF LOT 3	17568	0	\$225,900
220015403040000	220015403040000	408106	200681	01	R	0583	4	RU	3501			01806 TRAYNOR DR	59802	1806 TRAYNOR DR			MISSOULA	MT	59802-3636	TRAYNOR-LOT 4, 17.9' X 10.6' X 16' OF LOT 5 PLAT A	22006	0	\$259,300
220015403020000	220015403020000	797602	229961	01	R	0583	4	RU	3501			01728 TRAYNOR DR	59802	PO BOX 8286			MISSOULA	MT	59807-8286	TRAYNOR-LOT 5, LESS 17.9' X 10.6' X 16'	22930	0	\$215,300
220015402140000	220015402140000	708401	146661	01	R	0583	4	RU	3501			01718 TRAYNOR DR	59802	1718 TRAYNOR DR			MISSOULA	MT	59802-3638	TRAYNOR-LOT 6	14070	0	\$265,800
220015402120000	220015402120000	317053	716461	01	R	0583	4	RU	3501			01616 W GREENOUGH DR	59802	1616 GREENOUGH DR W			MISSOULA	MT	59802-3644	IN SE1/4 SE1/4 PLAT F 15-13-19 1.5AC	0	1	\$419,746
220015402100000	220015402100000	317008	159281	01	R	0583	4	VU				TRAYNOR DR	59802	1616 GREENOUGH DR W			MISSOULA	MT	59802-3644	TRAYNOR-LOT 7	15950	0	\$68,938
220015402080000	220015402080000	2129001	143591	01	R	0583	4	RU	3501			01729 TRAYNOR DR	59802	1729 TRAYNOR DR			MISSOULA	MT	59802-3637	TRAYNOR-LOT 8	13620	0	\$187,600
220015402060000	220015402060000	1804500	157701	01	R	0583	4	RU	3501			01805 TRAYNOR DR	59802	1805 TRAYNOR DR			MISSOULA	MT	59802-3635	LOT 9 OF TRAYNOR ADDITION 15-13-19	16980	0	\$213,600
220015402040000	220015402040000	1372859	160301	01	R	0583	4	RU	3501			01811 TRAYNOR DR	59802	1811 TRAYNOR DR			MISSOULA	MT	59802-3635	TRAYNOR-LOT 10	16420	0	\$203,300
220015402020000	220015402020000	173608	143251	01	R	0583	4	RU	3501			01819 TRAYNOR DR	59802	1819 TRAYNOR DR			MISSOULA	MT	59802-3635	TRAYNOR-PT OF LOT 11	13770	0	\$178,800
220015401170000	220015401170000	3075305	107111	01	R	0583	4	RU	3501			02201 GREENOUGH CT	59802	2201 GREENOUGH CT W			MISSOULA	MT	59802-3582	GREENOUGH ESTATES-LOT 1 10,78 8 SQ FT	10788	0	\$172,700
220015401160000	220015401160000	3075209	115131	01	R	0583	4	RU	3501			02203 GREENOUGH CT	59802	2203 GREENOUGH CT W			MISSOULA	MT	59802-3582	GREENOUGH ESTATES-LOT 2 11.64 3 SQ FT	11643	0	\$179,400
220015401150000	220015401150000	3075103	125651	01	R	0583	4	RU	3501			02207 GREENOUGH CT	59802	2207 GREENOUGH CT W			MISSOULA	MT	59802-3582	GREENOUGH ESTATES-LOT 3 12.55 1 SQ FT	12551	0	\$172,300
220015401140000	220015401140000	3075007	127991	01	R	0583	4	RU	3501			02213 GREENOUGH CT	59802	236 CONNELL AVE			MISSOULA	MT	59801-4342	GREENOUGH ESTATES-LOT 4 12.85 4 SQ FT	12854	0	\$161,200
220015401130000	220015401130000	3074909	130481	01	R	0583	4	RU	3501			02219 GREENOUGH CT	59802	2219 GREENOUGH CT W			MISSOULA	MT	59802-3582	GREENOUGH ESTATES-LOT 5 13.09 1 SQ FT	13091	0	\$162,500
220015401120000	220015401120000	3074803	154751	01	R	0583	4	RU	3501			02225 W GREENOUGH CT	59802	2225 GREENOUGH CT W			MISSOULA	MT	59802-3582	GREENOUGH ESTATES-LOT 6	15575	0	\$185,200
220015401110000	220015401110000	3074707	243841	01	R	0583	4	RU	3501			02231 GREENOUGH CT	59802	32150 RANCH LN			HUSON	MT	59846-8608	GREENOUGH ESTATES-LOT 7 24.39 2 SQ FT	24392	0	\$168,200
220015401100000	220015401100000	3074601	401931	01	R	0583	4	RU	3501			02237 GREENOUGH CT	59802	2237 GREENOUGH CT W			MISSOULA	MT	59802-3582	GREENOUGH ESTATES-LOT 8 40.28 6 SQ FT	0	1	\$201,300
220015401090000	220015401090000	3074505	133051	01	R	0583	4	RU	3501			02243 GREENOUGH CT	59802	PO BOX 7277			MISSOULA	MT	59807-7277	GREENOUGH ESTATES-LOT 9 13.35 6 SQ FT	13356	0	\$266,600
220015401080000	220015401080000	3074409	104601	01	R	0583	4	RU	3501			02249 GREENOUGH CT	59802	2249 GREENOUGH CT W			MISSOULA	MT	59802-3582	GREENOUGH ESTATES-LOT 10 10.4 94 SQ FT	10494	0	\$156,600
220015401070000	220015401070000	3074303	135721	01	R	0583	4</																

220015106060000	220015106060000	2064304	7690	01	R	0583	4	RU	3501	BARNIER CECIL D & MERNA R	02709	HIGHLAND DR	59802	2709 HIGHLAND DR			MISSOULA	MT	59802-3153	LOT 6 OF HIGHLAND HEIGHTS NO 2 15-13-19	7645	0	\$154,900
220015106050000	220015106050000	1178200	7692	01	R	0583	4	RU	3501	DICKINSON KARIN R	02705	HIGHLAND DR	59802	516 REDWOOD ST			MISSOULA	MT	59802-3124	LOT 4 OF HIGHLAND HEIGHTS NO 2 BLK 5 15-13-19	7700	0	\$158,800
220015106040000	220015106040000	1411109	7692	01	R	0583	4	RU	3501	WRIGHT MATTHEW D & CHRISTINE A	02703	DUNCAN DR	59802	2703 DUNCAN DR			MISSOULA	MT	59802-3161	LOT 4 OF HIGHLAND HEIGHTS NO 2 BLK 5 15-13-19	7700	0	\$154,600
220015106030000	220015106030000	128305	8129	01	R	0583	4	RU	3501	VOTAVA PETR & JENNIFER O	02623	DUNCAN DR	59802	950 HARRISON ST UNIT 105			SAN FRANCISCO	CA	94107-1074	LOT 3 OF HIGHLAND HEIGHTS NO 2 BLK 5 15-13-19	8250	0	\$158,500
220015106020000	220015106020000	1135500	8060	01	R	0583	4	RU	3501	ROHAN PATRICK D & NAN E LIVING	00412	VILLAGE PL	59802	412 VILLAGE PL			MISSOULA	MT	59802-3144	LOT 2 OF HIGHLAND HEIGHTS NO 2 BLK 5 15-13-19	7700	0	\$148,800
220015106010000	220015106010000	681402	9970	01	R	0583	4	RU	3501	HORGAN DAVID J	00408	VILLAGE PLACE	59802	408 VILLAGE PL			MISSOULA	MT	59802-3144	LOT 1 OF HIGHLAND HEIGHTS NO 2 BLK 5 15-13-19	10650	0	\$211,700
220015105090000	220015105090000	2337308	9858	01	R	0583	4	RU	3501	VIZZUTTI BEVERLY B	00405	VILLAGE PL	59802	405 VILLAGE PL			MISSOULA	MT	59802-3143	HIGHLAND HEIGHTS #2-LOT 8 BLK 4	10314	0	\$156,000
220015105080000	220015105080000	289000	8069	01	R	0583	4	RU	3501	BULGER JOHN J	00411	VILLAGE PL	59802	411 VILLAGE PL			MISSOULA	MT	59802-3143	HIGHLAND HEIGHTS #2-LOT 7 BLK 4	8071	0	\$143,400
220015105070000	220015105070000	531502	8228	01	R	0583	4	RU	3501	ORTEGA CATHERINE A	02511	DUNCAN DR	59802	2511 DUNCAN DR			MISSOULA	MT	59802-3158	HIGHLAND HEIGHTS #2-LOT 6 BLK 4	8371	0	\$136,900
220015105060000	220015105060000	1123405	7119	01	R	0583	4	RU	3501	ZARNOT MELISSA	02501	DUNCAN DR	59802	2501 DUNCAN DR			MISSOULA	MT	59802-3158	HIGHLAND HEIGHTS #1-LOT 1 BLK 4 15-13-19	7128	0	\$170,700
220015105050000	220015105050000	1432901	7691	01	R	0583	4	RU	3501	SOLTAU SUSAN M	00408	PARKSIDE LN	59802	408 PARKSIDE LN			MISSOULA	MT	59802-3128	HIGHLAND HEIGHTS #1-LOT 2 BLK 4	7700	0	\$149,300
220015105040000	220015105040000	2203400	8705	01	R	0583	4	RU	3501	PAVLACK JOANN C	00400	PARKSIDE DR	59802	400 PARKSIDE LN			MISSOULA	MT	59802-3128	LOT 3 IN BLK 4 OF HIGHLAND HEIGHTS FIRST SUPPLEMENT	8728	0	\$151,800
220015105030000	220015105030000	1100803	7692	01	R	0583	4	RU	3501	HUNT JOHN JOSEPH & MADGIE MAE	00308	PARKSIDE DR	59802	308 PARKSIDE LN			MISSOULA	MT	59802-3130	HIGHLAND HEIGHTS #1-LOT 4 BLK 4	7700	0	\$169,900
220015105020000	220015105020000	89306	7802	01	R	0583	4	RU	3501	FURNISS JERRY L & SHANNON L	00306	PARKSIDE DR	59802	306 PARKSIDE LN			MISSOULA	MT	59802-3130	LOT 5 BLK 4 OF HIGHLAND HEIGHTS #1 & LOT 9 BLK 4 OF	7700	0	\$185,300
220015104180000	220015104180000	2508109	7692	01	R	0583	4	RU	3501	LLOYD LISA VACHIO	00400	SKYLINE DR	59802	400 SKYLINE DR			MISSOULA	MT	59802-3110	LOT 9 OF HIGHLAND HEIGHTS BLK 3 S15 T13 R19	7700	0	\$170,600
220015104170000	220015104170000	173704	7692	01	R	0583	4	RU	3501	WITT MORGAN F	02314	VALLEY DR	59802	2314 VALLEY DR			MISSOULA	MT	59802-3148	LOT 8 OF HIGHLAND HEIGHTS NO 1 BLK 3 S15 T13 R19	7700	0	\$167,400
220015104160000	220015104160000	2363305	7692	01	R	0583	4	RU	3501	HERRITT LOUANN	02320	VALLEY DR	59802	2320 VALLEY DR			MISSOULA	MT	59802-3148	LOT 7 OF HIGHLAND HEIGHTS NO 1 BLK 3 S15 T13 R19	7700	0	\$164,500
220015104150000	220015104150000	1636005	7692	01	R	0583	4	RU	3501	MANNING MARY E	02324	VALLEY DR	59802	2324 VALLEY DR			MISSOULA	MT	59802-3148	LOT 6 OF HIGHLAND HEIGHTS NO 1 BLK 3 S15 T1 3 R19	7700	0	\$153,700
220015104140000	220015104140000	2188505	7692	01	R	0583	4	RU	3501	STRAUCH JOHN R	02328	VALLEY DR	59802	2328 VALLEY DR			MISSOULA	MT	59802-3148	LOT 5 OF HIGHLAND HEIGHTS NO 1 BLK 3 S15 T13 R19	7700	0	\$158,800
220015104130000	220015104130000	2361407	7692	01	R	0583	4	RU	3501	DEPUY KEVIN M	02404	VALLEY DR	59802	2404 VALLEY DR			MISSOULA	MT	59802-3146	LOT 4 OF HIGHLAND HEIGHTS NO 1 BLK 3 S15 T13 R19	7700	0	\$150,400
220015104120000	220015104120000	1254605	7692	01	R	0583	4	RU	3501	LESAR MARY LU	02408	VALLEY DR	59802	2408 VALLEY DR			MISSOULA	MT	59802-3146	LOT 3 OF HIGHLAND HEIGHTS NO 1 BLK 3 S15 T13 R19	7700	0	\$170,500
220015104110000	220015104110000	127505	7430	01	R	0583	4	RU	3501	MANNING CYNTHIA H	02412	VALLEY DR	59802	2412 VALLEY DR			MISSOULA	MT	59802-3146	HIGHLAND HEIGHTS #1-LOT 2 BLK 3	7638	0	\$154,200
220015104100000	220015104100000	1136204	7972	01	R	0583	4	RU	3501	PRATTER MARILYN SEASTONE	00405	PARKSIDE LN	59802	405 PARKSIDE LN			MISSOULA	MT	59802-3127	LOT 1 OF HIGHLAND HEIGHTS NO 1 BLK 3 S15 T13 R19	8011	0	\$151,500
220015104090000	220015104090000	2027108	10866	01	R	0583	4	RU	3501	THOMAS DONALD F	02419	DUNCAN DR	59802	2419 DUNCAN DR			MISSOULA	MT	59802-3155	LOT 18 OF HIGHLAND HEIGHTS NO 1 BLK 3 S15 T13 R19	10380	0	\$172,700
220015104080000	220015104080000	167409	7588	01	R	0583	4	RU	3501	ROSENJACK RICHARD C	02409	DUNCAN DR	59802	844 CIRCLEWOOD DR			AURORA	OH	44202-9796	LOT 17 OF HIGHLAND HEIGHTS NO 1 BLK 3 S15 T13 R19	7238	0	\$156,200
220015104070000	220015104070000	587605	7570	01	R	0583	4	RU	3501	LIEBER JANICE E	02407	DUNCAN DR	59802	2407 DUNCAN DR			MISSOULA	MT	59802-3155	LOT 16 OF HIGHLAND HEIGHTS NO 1 BLK 3 S15 T13 R19	7217	0	\$152,000
220015104060000	220015104060000	1794100	7552	01	R	0583	4	RU	3501	NORUM KAY R	02405	DUNCAN DR	59802	2405 DUNCAN DR			MISSOULA	MT	59802-3155	LOT 15 OF HIGHLAND HEIGHTS NO 1 BLK 3 S15 T13 R19	7203	0	\$152,900
220015104050000	220015104050000	1826504	7534	01	R	0583	4	RU	3501	FARIS RUSSELL DEAN	02325	DUNCAN DR	59802	2325 DUNCAN DR			MISSOULA	MT	59802-3455	LOT 14 OF HIGHLAND HEIGHTS NO 1 BLK 3 S15 T13 R19	7182	0	\$154,100
220015104040000	220015104040000	761009	7517	01	R	0583	4	RU	3501	GOSS STEPHEN K	02323	DUNCAN DR	59802	2323 DUNCAN DR			MISSOULA	MT	59802-3455	LOT 13 OF HIGHLAND HEIGHTS NO 1 BLK 3 S15 T13 R19	7168	0	\$140,000
220015104030000	220015104030000	395851	7499	01	R	0583	4	RU	3501	BALDWIN JULIA A	02319	DUNCAN DR	59802	2319 DUNCAN DR			MISSOULA	MT	59802-3455	LOT 12 OF HIGHLAND HEIGHTS NO 1 BLK 3 S15 T13 R19	7147	0	\$152,900
220015104020000	220015104020000	2106905	7481	01	R	0583	4	RU	3501	NEILSON JOHN M	02315	DUNCAN DR	59802	2315 DUNCAN DR			MISSOULA	MT	59802-3455	LOT 11 OF HIGHLAND HEIGHTS NO 1 BLK 3 S15 T13 R19	7133	0	\$156,400
220015104010000	220015104010000	2436009	7463	01	R	0583	4	RU	3501	RANDALL MARY ANN	00410	SKYLINE DR	59802	2309 W EVELYN ST			LEWISTOWN	MT	59457-2754	LOT 10 OF HIGHLAND HEIGHTS NO 1 BLK 3 S15 T13 R19	7112	0	\$159,800
220015103190000	220015103190000	2455103	7561	01	R	0583	4	RU	3501	SELBY SUSAN K	02312	SKYLINE DR	59802	2312 SKYLINE DR			MISSOULA	MT	59802-3108	LOT 10 OF HIGHLAND HEIGHTS NO 1 BLK 2 15-13-19	7566	0	\$152,600
220015103180000	220015103180000	1793906	7692	01	R	0583	4	RU	3501	RILEY KARIN L	02316	SKYLINE DR	59802	2316 SKYLINE DR			MISSOULA	MT	59802-3108	LOT 9 OF HIGHLAND HEIGHTS NO 1 BLK 2 15-13-19	7700	0	\$147,800
220015103170000	220015103170000	1632605	7692	01	R	0583	4	RU	3501	POLK PEGGY L	02320	SKYLINE DR	59802	2320 SKYLINE DR			MISSOULA	MT	59802-3108	LOT 8 OF HIGHLAND HEIGHTS NO 1 BLK 2 15-13-19	7700	0	\$150,300
220015103160000	220015103160000	1425004	7692	01	R	0583	4	RU	3501	BERTHOUD JAMES G & PATRICIA M	02324	SKYLINE DR	59802	2324 SKYLINE DR			MISSOULA	MT	59802-3108	LOT 7 OF HIGHLAND HEIGHTS NO 1 BLK 2 15-13-19	7700	0	\$141,400
220015103150000	220015103150000	801100	7692	01	R	0583	4	RU	3501	GUSTAFSON GARY L & ANNE I	02330	SKYLINE DR	59802	2330 SKYLINE DR			MISSOULA	MT	59802-3108	LOT 6 OF HIGHLAND HEIGHTS NO 1 BLK 2 15-13-19	7700	0	\$142,900
220015103140000	220015103140000	2441100	7692	01	R	0583	4	RU	3501	WILLIAMSON PATRICK H & COLLEEN	02404	SKYLINE DR	59802	2404 SKYLINE DR			MISSOULA	MT	59802-3106	LOT 5 OF HIGHLAND HEIGHTS NO 1 BLK 2 15-13-19	7700	0	\$142,500
220015103130000	220015103130000	119504	7692	01	R	0583	4	RU	3501	FOLSOM LOREEN C	02408	SKYLINE DR	59802	PO BOX 9225			MISSOULA	MT	59802-9225	LOT 4 OF HIGHLAND HEIGHTS NO 1 BLK 2 15-13-19	7700	0	\$147,400
220015103120000	220015103120000	107803	8460	01	R	0583	4	RU	3501	PETERSON CONSTANCE L	02412	SKYLINE DR	59802	600 OVERLOOK WAY			MISSOULA	MT	59803-2233	LOT 3 OF HIGHLAND HEIGHTS NO 1 BLK 2	8481	0	\$143,100
220015103110000	220015103110000	714853	8748	01	R	0583	4	RU	3501	BEERS MARILYN J	02418	SKYLINE DR	59802	2418 SKYLINE DR			MISSOULA	MT	59802-3106	LOT 2 OF HIGHLAND HEIGHTS NO 1 15-13-19	8757	0	\$174,900
220015103100000	220015103100000	991900	8836	01	R	0583	4	RU	3501	YEAGER JOSEPH A & ELIZABETH C	02420	SKYLINE DR	59802	2420 SKYLINE DR			MISSOULA	MT	59802-3106	LOT 1 OF HIGHLAND HEIGHTS NO 1 BLK 2 15-13-19	8757	0	\$188,000
220015103090000	220015103090000	98001	10320	01	R	0583	4	RU	3501	STUBE DAVID B	02421	VALLEY DR	59802	2421 VALLEY DR			MISSOULA	MT	59802-3145	LOT 19 OF HIGHLAND HEIGHTS NO 1 BLK 2 15-13-19	10329	0	\$187,400
220015103080000	220015103080000	1457401	10935	01	R	0583	4	RU	3501	NOLAN JANE A	02411	VALLEY DR	59802	2616 LAKE MARY RONAN RD			PROCTOR	MT	59929-9728	LOT 18 OF HIGHLAND HEIGHTS NO 1 BLK 2 15-13-19	10382	0	\$155,800
220015103070000	220015103070000	51603	7692	01	R	0583	4	RU	3501	APPELMAN FRED D & MARJORIE M	02409	VALLEY DR	59802	2409 VALLEY DR			MISSOULA	MT	59802-3145	LOT 17 OF HIGHLAND HEIGHTS NO 1 BLK 2 15-13-19	7700	0	\$157,900
220015103060000	220015103060000	1618809	7692	01	R	0583	4	RU	3501	NARUM BEVERLY J	02405	VALLEY DR	59802	2405 VALLEY DR			MISSOULA	MT	59802-3145	LOT 16 OF HIGHLAND HEIGHTS NO 1 BLK 2 15-13-19	7700	0	\$143,100
220015103050000	220015103050000	347305	7692	01	R	0583	4	RU	3501	BUHRING THOMAS M & AILEEN K	02331	VALLEY DR	59802	1699 PIERSIDE LN			CAMARILLO	CA	93010-6014	LOT 15 HIGHLAND HEIGHTS NO 1 BLK 2 15-13-19	7700	0	\$143,600
220015103040000	220015103040000	137808	7692	01	R	0583	4	RU	3501	BENSON ROBERT E REVOCABLE TRUS	02325	VALLEY DR	59802	2325 VALLEY DR			MISSOULA	MT	59802-3147	LOT 14 OF HIGHLAND HEIGHTS NO 1 BLK 2 15-13-19	7700	0	\$142,600
220015103030000	220015103030000	956708	7692	01	R	0583	4	RU	3501	HOLDEN SHIRLEY	02319	VALLEY DR	59802	2319 VALLEY DR			MISSOULA	MT	59802				

220015404060000	220015404060000	3723409	4916	01	C	0583	4	CU	3507	MOUNTAINWOOD ESTATES LLC	01722	PEGGIO LANE	59802	1720 PEGGIO LN APT 3			MISSOULA	MT	59802-3676	LOT 5 OF RATTLESNAKE HILLS EST ATES PHASE 4 15-13-19	4921	0	\$354,751		
220015404080000	220015404080000	3723505	5087	01	C	0583	4	CU	3507	MOUNTAINWOOD ESTATES LLC	01724	PEGGIO LANE	59802	1720 PEGGIO LN APT 3			MISSOULA	MT	59802-3676	LOT 6 RATTLESNAKE HILLS ESTATE S PHASE 4 15-13-19	5092	0	\$354,965		
220015404120000	220015404120000	3723601	5087	01	C	0583	4	CU	3507	MOUNTAINWOOD ESTATES LLC	01726	PEGGIO LANE	59802	1720 PEGGIO LN APT 3			MISSOULA	MT	59802-3676	LOT 7 OF RATTLESNAKE HILLS EST ATES PHASE 4 15-13-19	5092	0	\$354,965		
220015404140000	220015404140000	3723707	5087	01	C	0583	4	CU	3507	MOUNTAINWOOD ESTATES LLC	01728	PEGGIO LANE	59802	1720 PEGGIO LN APT 3			MISSOULA	MT	59802-3676	LOT 8 OF RATTLESNAKE HILLS EST ATES PHASE 4	5092	0	\$364,065		
220015404150000	220015404150000	3723803	5087	01	C	0583	4	CU	3507	MOUNTAINWOOD ESTATES LLC	01730	PEGGIO LANE	59802	1720 PEGGIO LN APT 3			MISSOULA	MT	59802-3676	LOT 9 OF RATTLESNAKE HILLS EST ATES PHASE 4	5092	0	\$364,065		
220014223010000	220014223010000	2464202	73426	01	R	0583	4	RU	3501	TOMPSON BONNIE L	02000	RAYMOND AVE	59802	2000 RAYMOND AVE			MISSOULA	MT	59802-3515	LOTS 22.23 & 24 BLK 22 OF PARK ADDN, VAC. STREET ADJ	0	9	\$240,300		
220014226200000	220014226200000	4028406	5386	01	R	0583	4	VU		MCQUE TIMOTHY J			59802	4291 WILD FOX RD			MISSOULA	MT	59802-8604	LOT 9A OF PARK ADDITION BLK 1 OF LOTS 9A & 17A 14-13-	5400	0	\$55,750		
220014227140000	220014227140000	3999403	3540	01	R	0583	4	RU	3501	WARD EDMUND J & PAULA KAY			59802	11 SEPTEMBER DR			MISSOULA	MT	59802-3321	LOT 14A OF PARK ADDITION BLK 3 OF LOTS 13A & 14A 14-	3534	0	\$61,418		
220014227120000	220014227120000	3999302	3533	01	R	0583	4	RU	3501	WARD EDMUND J & PAULA KAY	01844	MISSOULA AVE	59802	11 SEPTEMBER DR			MISSOULA	MT	59802-3321	LOT 13A OF PARK ADDITION BLK 3 OF LOTS 13A & 14A 14-	3533	0	\$120,300		
220014317090000	220014317090000	3986503	12963	01	R	0583	4	VR		MEINERSHAGEN TERRE & JENNIE			59802	2124 GREENOUGH DR W			MISSOULA	MT	59802-3566	LOT 4 OF DUB'S PEACE 14-13-19 06802004	12977	0	\$65,221		
220014314170000	220014314170000	3609804	5664	01	R	0583	4	RU	3501	PATERNI MICHAEL J & ROSANNA V	00517	LOLO ST	59802	2535 WINDEMERE CT			MISSOULA	MT	59804-9006	LOT 4 OF SHARON'S GARDENS 14-13-19	5783	0	\$203,300		
220014104240000	220014104240000	3591802	15669	01	R	0583	4	RU	3501	POSSIEL WILLIAM J & CLAUDIA J			59802	17 GREENBRIER DR			MISSOULA	MT	59802-3353	LOT 5 OF GREENBRIER ADDITION 14-13-19	15682	0	\$252,100		
220014104230000	220014104230000	3591706	14988	01	R	0583	4	VU		HARRISON JOHN & BARBARA			59802	1330 SUNFLOWER DR			MISSOULA	MT	59802-3310	LOT 4 IN GREENBRIER ADDITION 14-13-19	15246	0	\$68,058		
220014104220000	220014104220000	3591600	21974	01	R	0583	4	RU	3501	LOCK BRADLEY J & CARLA S			59802	11 GREENBRIER LN			MISSOULA	MT	59802-3301	LOT 3 OF GREENBRIER ADDITION 14-13-19	22216	0	\$453,430		
220014104210000	220014104210000	3591504	22192	01	R	0583	4	RU	3501	O'CONNELL PHILLIP J	00016	GREENBRIER LN	59802	440 E KENT AVE			MISSOULA	MT	59801-6022	LOT 2 OF GREENBRIER ADDITION 14-13-19	22216	0	\$159,130		
220014319040000	220014319040000	1186456	36076	01	R	0583	4	C	VU	MACDONALD RONALD B & PATRICIA			59802	201 W MAIN ST			MISSOULA	MT	59802-4334	POR OF COS 3549 TRACT 1 IN SW4 SW4 14-13-19	0	1	\$98,632		
220014313080000	220014313080000	3549207	31355	01	R	0583	4	CU	RU	SHERIFF STEVEN	00706	LOLO ST	59802	706 LOLO ST			MISSOULA	MT	59802-3560	ORRSDALE NO 3 LOT 2	0	1	\$293,500		
220014313060000	220014313060000	3549101	44626	01	R	0583	4	C	RU	MILLER ROSS D	00708	LOLO ST	59802	708 LOLO ST			MISSOULA	MT	59802-3501	ORRSDALE NO 3 LOT 1	0	2	\$289,900		
220014110070000	220014110070000	5832116	21955	01	R	0583	4	RU	3501	SCHULTZ WILLIAM J & CINDY J	01525	SAINT ANN DR	59802	1525 SAINT ANNS DR			MISSOULA	MT	59802-3315	TR 2526 COS 2482 IN NW4 NW4 NE 4 PLAT BK 14-13-19 5A	21780	0	\$189,100		
220014316120000	220014316120000	3578200	18320	01	R	0583	4	VU		COLLINS PATRICIA P			59802	2132 DUNCAN DR			MISSOULA	MT	59802-3568	30 X 885 PARCEL IN NW4 NW4 SW 4 14-13-19 COLLINS LN	20550	0	\$7,469		
220014104110000	220014104110000	3490501	36672	01	R	0583	4	RU	3501	BECHTOLD TIMOTHY M	01502	DICKINSON ST	59802	1505 DICKINSON ST			MISSOULA	MT	59802-3408	TRACT 1 COS 4777 IN NW4 NE4 14-13-19	36590	0	\$298,700		
220014208110000	220014208110000	3480804	14116	01	C	0583	4	CU	3507	MCUNE CARLA J	02416	GILBERT	59802	5655 PRIMOSE LN			MISSOULA	MT	59808-9747	PARK BLOCK 29 LOTS 1A, 4A & 19 A LOT 4A 14.810 SQ FT	14810	0	\$170,300		
220014216090000	220014216090000	3448300	7047	01	R	0583	4	RU	3501	BERG TODD A & LESLIE O			59802	2216 MISSOULA AVE			MISSOULA	MT	59802-3538	PARK BLK 6 LOTS 13 THRU 17 LOT 3 6.482 SQ FT	6482	0	\$229,700		
220014216080000	220014216080000	3448204	6148	01	R	0583	4	RU	3501	HENSEL MARTIN E	00901	LOLO ST	59802	901 LOLO ST			MISSOULA	MT	59802-3555	PARK BLK 6 LOTS 13 THRU 17 LOT 2 5.401 SQ FT	5401	0	\$106,800		
220014111080000	220014111080000	3403904	9991	01	R	0583	4	RU	3501	HOLTOM ROGER A & LINDA H			59802	248A N HIGGINS AVE APT 406			MISSOULA	MT	59802-4435	LT 1 COS 4655 IN NE1/4 14-13-19	10000	0	\$304,200		
220014317070000	220014317070000	3402404	65513	01	R	0583	4	C	VU	HARRISON SUSAN S & R PATRICK			59802	PO BOX 34107	10 HWY			MISSOULA	MT	0	-	TRACT A1 COS 5433 IN SW4	0	2	\$34,336
220014220030000	220014220030000	1715602	13802	01	R	0583	4	RR	3501	SMITH CHARLES A	02222	WYLLIE AVE	59802	2222 WYLLIE AVE			MISSOULA	MT	59802-3534	LOT 13A PARK ADDITION BLK 13 OF LOTS 13A & 17A 14-13-	13817	0	\$195,200		
220014220040000	220014220040000	3338804	9990	01	R	0583	4	RR	3501	CYR TERRY JAMES			59802	1222 HELEN AVE			MISSOULA	MT	59801-4444	LOT 17A OF PARK ADDITION BLK 1 3 OF LOTS 13A & 17A 1	10000	0	\$110,200		
220014319180000	220014319180000	1681855	16203	01	C	0583	4	CU	3507	GERMAINE DORIS	00505	ALVINA DR	59802	505 ALVINA DR			MISSOULA	MT	59802-3658	SW4 SW4 LOT 13 14-13-19	16350	0	\$230,138		
220014319170000	220014319170000	778902	16338	01	R	0583	4	RU	3501	HASSMAN ROBERT F	01955	ALVINA DR	59802	1955 ALVINA DR			MISSOULA	MT	59802-3660	GREENDALE-LOT 1	16355	0	\$274,600		
220014319160000	220014319160000	175602	16338	01	R	0583	4	RU	3501	HALL MITCHELL S & SHIRLEY M	01945	ALVINA DR	59802	1945 ALVINA DR			MISSOULA	MT	59802-3660	GREENDALE-LOT 2	16355	0	\$233,400		
220014319150000	220014319150000	1626406	16338	01	R	0583	4	RU	3501	SPINDLER CURTIS R & SUSAN N	01935	ALVINA DR	59802	1935 ALVINA DR			MISSOULA	MT	59802-3660	GREENDALE-LOT 3	16355	0	\$252,700		
220014319140000	220014319140000	588607	17587	01	R	0583	4	RU	3501	EVERT JOHN A TRUST	01925	ALVINA DR	59802	1925 ALVINA DR			MISSOULA	MT	59802-3660	GREENDALE-PLAT D LOT 4, PLAT E ' PT OF LOT 5	17606	0	\$267,500		
220014319130000	220014319130000	535008	14630	01	R	0583	4	VU		DUPONT BETTY G	01915	ALVINA DR	59802	1905 ALVINA DR			MISSOULA	MT	59802-3660	GREENDALE-PT OF LOT 5 PLAT E	14645	0	\$67,306		
220014319120000	220014319120000	535100	20394	01	R	0583	4	RU	3501	DUPONT BETTY G	01905	ALVINA DR	59802	1905 ALVINA DR			MISSOULA	MT	59802-3660	GREENDALE-LOT 6	21110	0	\$364,498		
220014319100000	220014319100000	5816803	16880	01	R	0583	4	C	RU	STANLEY GEORGE D JR & BARBARA	01900	ALVINA DR	59802	1900 ALVINA DR			MISSOULA	MT	59802-3659	TRACT C IN SW1/4 SW1/4 PLAT X1 B2 14-13-19	0	1	\$277,300		
220014319090000	220014319090000	5816816	16699	01	R	0583	4	C	RU	WEBBER DOUGLAS W	01910	ALVINA DR	59802	1910 ALVINA DR			MISSOULA	MT	59802-3659	TRACT B IN SW1/4 PLAT X1B1 14-13-19	0	1	\$415,170		
220014319080000	220014319080000	5816794	16707	01	R	0583	4	C	RU	SHERWOOD MICHAEL J & ANN MILLE	01920	ALVINA DR	59802	1920 ALVINA DR			MISSOULA	MT	59802-3659	TRACT A COS 1890 IN SW4 SW4 PLAT X1B 14-13-19 1AC	16713	0	\$322,700		
220014319070000	220014319070000	1186507	20754	01	R	0583	4	VU		MACDONALD PATRICIA O			59802	1950 ALVINA DR			MISSOULA	MT	59802-3659	PORCEL A COS 1302 IN SW4 SW4 PLAT X1A 14-13-19 476A	20735	0	\$74,919		
220014319060000	220014319060000	1068202	26988	01	R	0583	4	RU	3501	OVERLAND PAUL K & KAREN M	01960	ALVINA DR	59802	1960 ALVINA DR			MISSOULA	MT	59802-3659	PORCEL A COS 1302 IN SW4 SW4 PLAT X1A 14-13-19 62AC	27007	0	\$369,979		
220014319050000	220014319050000	5818743	38260	01	R	0583	4	C	RU	MACDONALD PATRICIA O	01950	ALVINA DR	59802	1950 ALVINA DR			MISSOULA	MT	59802-3659	PORCEL B COS 1302 IN SW4 SW4 PLAT X1A 14-13-19 476A	20735	0	\$74,919		
220014319030000	220014319030000	533208	69031	01	R	0583	4	C	RU	BUNEST DAVID J & FAY M			59802	146 WARM SPRINGS CREEK RD			CLANCY	MT	59634-8522	TRACT OF COS 3549 TRACT 1 (INCL POR A) IN SW4SW4 14-13-	24829	0	\$483,026		
220014319020000	220014319020000	1256809	28328	01	R	0583	4	RU	3501	SELDIN NANCY W	01970	ALVINA DR	59802	1970 ALVINA DR			MISSOULA	MT	59802-3666	IN S1/2 SW1/4 PLAT U 14-13-19 64AC	27878	0	\$190,500		
220014319010000	220014319010000	1701301	20910	01	R	0583	4	RU	3501	PHILLIPS SALLY W	01900	GREENOUGH DR	59802	1900 GREENOUGH DR W			MISSOULA	MT	59802-3650	S1/2 SW1/4 PLAT V1 14-13-19 .49AC	21344	0	\$274,400		
220014318130000	220014318130000	857305	17351	01	R	0583	4	RU	3501	RISI GEORGE F JR	02022	DUNCAN DR	59802	2022 DUNCAN DR			MISSOULA	MT	59802-3652	POR OF LOT 5 OF WEST RATTLESNAKE ADDITION BLK 2 14-1	16950	0	\$332,200		
220014318120000	220014318120000	1584603	12859	01	C	0583	4	CU	3507	DAWSON DIANE	02012	DUNCAN DR	59802	PO BOX 9094			LA JOLLA	CA	92038-9094	LOT 4 & PORTION OF 5 OF WEST RATTLESNAKE ADDITION BLK	13150	0	\$269,638		
220014318110000	220014318110000	77201	9517	01	R	0583	4	RU	3501	STORMO LOREN C & JONI W	02010	W GREENOUGH DR	59802	2010 W GREENOUGH DR			MISSOULA	MT	59802-3652	LOT 3 OF WEST RATTLESNAKE ADDITION BLK 2 14-13-19	9467	0	\$292,500		
220014318100000	220014318100000	77105	35178	01	R	0583	4	RU	3501	MANNING RICHARD D	02020	WEST GREENOUGH DR	59802	2020 GREENOUGH DR W			MISSOULA	MT	59802-3652	W252 OF LOT 1 & 1A OF WEST RATTLESNAKE ADDITION BLK	35342	0	\$397,028		
220014318080000	220014318080000	2109603	20865	01	R	0583	4	RU	3501	YOUNG MICHAEL K	00529	EVAN KELLY RD	59802	529 EVAN KELLY RD			MISSOULA	MT	59802-3601	LOT 2A OF WEST RATTLESNAKE ADDITION BLK 2 OF LOTS 1A	20885	0	\$280,500		

220014314020000	220014314020000	454209	18948	01	R	0583	4	RU	3501	PETERSON JOSEPH S	02255	MISSOULA AVE	59802	1003 CALEDONIA ST			BUTTE	MT	59701-9003	IN NW1/4 SW1/4 14-13-19 LESS .21 AC SOLD	18000	0	\$133,100
220014313070000	220014313070000	3152108	21756	01	R	0583	4	RU	3501	ZENK SONIA L TRUSTEE	02320	WOODLAND AVE	59802	2320 WOODLAND AVE			MISSOULA	MT	59802-3434	ORRSDALE-2 LOT C .5AC	21780	0	\$448,200
220014313050000	220014313050000	3152002	21760	01	R	0583	4	RU	3501	HAWTHORNE BLACKWELL J JR & LYN	02400	WOODLAND AVE	59802	PO BOX 9415			MISSOULA	MT	59807-9415	ORRSDALE #2-LOT B .5AC	21780	0	\$268,000
220014313030000	220014313030000	3049606	21774	01	R	0583	4	RU	3501	HERMES ROBERT J & LINDA	02400	WOODLAND AVE	59802	2406 WOODLAND AVE			MISSOULA	MT	59802-3432	ORRSDALE-2 LOT A .5AC	21780	0	\$297,500
220014313020000	220014313020000	473707	84260	01	R	0583	4	VU		ROSSBACH WILLIAM A	00710	LOLO ST	59802	2500 SYCAMORE ST			MISSOULA	MT	59802-3402	ORRSDALE 3 LOT 3	0	2	\$107,600
220014313010000	220014313010000	1700501	35475	01	R	0583	4	RU	3501	SMITH MILTON F TRUSTEE	00704	LOLO ST	59802	704 LOLO ST			MISSOULA	MT	59802-3560	ORRSDALE #1 AMENDED PLAT-LOT 5 A	0	1	\$251,700
220014312180000	220014312180000	929209	8554	01	R	0583	4	RU	3501	HICKS BILLY L & B JEAN	02325	WOODLAND AVE	59802	2325 WOODLAND AVE			MISSOULA	MT	59802-3433	E87' N109' OF LOT 9 OF ORRSDALE ADDITION 14-13-19	8720	0	\$200,200
220014312170000	220014312170000	1973155	10888	01	R	0583	4	RU	3501	CARLSON THOMAS A	02319	WOODLAND AVE	59802	2319 WOODLAND AVE			MISSOULA	MT	59802-3433	N70' OF S87' OF LOT 9 IN ORRSDALE LE ADDITION 14-13-19	10890	0	\$171,300
220014312160000	220014312160000	1627504	10892	01	R	0583	4	RU	3501	LASSILA ANDREW F & DEBRA E	02311	WOODLAND AVE	59802	2311 WOODLAND AVE			MISSOULA	MT	59802-3433	N54' OF LOT 2 & S117' OF LOT 9 OF ORRSDALE ADDITION 14	11055	0	\$159,600
220014312150000	220014312150000	1755804	11088	01	R	0583	4	RU	3501	HEMINGWAY LEE & SUZANNE KAY	02305	WOODLAND AVE	59802	2305 WOODLAND AVE			MISSOULA	MT	59802-3433	S71' OF N2 OF LOT 2 OF ORRSDALE ADDITION 14-13-19	11055	0	\$143,900
220014312140000	220014312140000	1774908	7184	01	R	0583	4	RU	3501	GRIFFITH DIANA	00612	LOLO ST	59802	612 LOLO ST			MISSOULA	MT	59802-3436	PARCEL A OF AMENDED PLAT OF ORRSDALE ADDITION S2 OF L	7213	0	\$141,600
220014312130000	220014312130000	1774802	12209	01	C	0583	4	CU	3507	NEWMAN SCOTT R & COLLEEN S	00606	LOLO ST	59802	5700 BLACK FOX TRL			MISSOULA	MT	59802-8613	W88' OF S 125' OF LOT 2 PARCEL B OF AMENDED ORRSDALE A	12250	0	\$191,200
220014312120000	220014312120000	1775006	19442	01	R	0583	4	RU	3501	STEENBERG THOMAS A & MARY L	00602	LOLO ST	59802	4802 ASPEN DR			MISSOULA	MT	59802-5218	E78.7' OF LOT 3 OF ORRSDALE ADDITION 14-13-19	19675	0	\$148,200
220014312110000	220014312110000	716302	19442	01	R	0583	4	RU	3501	CORMICAN A NEIL & DIANE L	00600	LOLO ST	59802	4713 STUDY RD			CENTERVILLE	IN	47330-9737	W77' OF LOT 3 OF ORRSDALE ADDITION 14-13-19	19463	0	\$189,000
220014312100000	220014312100000	332406	16233	01	R	0583	4	RU	3501	CHRISTIANSON RAE B WILLIAM	00516	LOLO ST	59802	516 LOLO ST			MISSOULA	MT	59802-3438	E65' OF LOT 4 OF ORRSDALE ADDITION 14-13-19	16250	0	\$132,700
220014312090000	220014312090000	791302	22651	01	R	0583	4	RU	3501	GRIMES RICHARD L & DEANNE R	00510	LOLO ST	59802	510 LOLO ST			MISSOULA	MT	59802-3438	W90.7' OF LOT 4 OF ORRSDALE ADDITION 14-13-19	22500	0	\$143,800
220014312080000	220014312080000	1254403	24108	01	R	0583	4	RU	3501	MELCHNER JOAN C	00504	LOLO ST	59802	504 LOLO ST			MISSOULA	MT	59802-3438	S150' OF LOT 5 OF ORRSDALE ADDITION 14-13-19	23355	0	\$195,000
220014312070000	220014312070000	2173606	14776	01	R	0583	4	RR	3501	STICKNEY PETER F & SUZANN	02312	DUNCAN DR	59802	2312 DUNCAN DR			MISSOULA	MT	59802-3456	N100' OF LOT 5 OF ORRSDALE ADDITION 14-13-19	15570	0	\$185,000
220014312060000	220014312060000	63102	30485	02	R	0583	4	RU	3501	AUTIO A RUDY & LEILA	02322	DUNCAN DR	59802	2322 DUNCAN DR			MISSOULA	MT	59802-3456	LOT 6 OF ORRSDALE ADDITION 14-13-19	30492	0	\$206,200
220014312050000	220014312050000	317608	15243	01	R	0583	4	RU	3501	OBERBILLIG DAVID	00503	LINDEN ST	59802	503 LINDEN ST			MISSOULA	MT	59802-3441	W2 OF LOT 7 IN ORRSDALE ADDITION 14-13-19	15181	0	\$185,400
220014312040000	220014312040000	2392106	15243	01	R	0583	4	RU	3501	MANNING DALE R & JENNIFER WILL	00507	LINDEN ST	59802	507 LINDEN ST			MISSOULA	MT	59802-3441	E2 OF LOT 7 OF ORRSDALE ADDITION 14-13-19	15259	0	\$165,600
220014312030000	220014312030000	2189903	15243	01	R	0583	4	RU	3501	PESEK BRADLEY J & KAREN A	00509	LINDEN ST	59802	509 LINDEN ST			MISSOULA	MT	59802-3441	W2 OF LOT 8 OF ORRSDALE ADDITION 14-13-19	15259	0	\$228,000
220014312020000	220014312020000	1318604	15243	01	R	0583	4	RU	3501	ARRINGTON ANNE	00603	LINDEN ST	59802	603 LINDEN ST			MISSOULA	MT	59802-3439	E2 OF LOT 8 OF ORRSDALE ADDITION 14-13-19	15259	0	\$199,500
220014312010000	220014312010000	1700809	8554	01	R	0583	4	RU	3501	FREY BARBARA M	00615	LINDEN ST	59802	615 LINDEN ST			MISSOULA	MT	59802-3439	W75.7' N 109' OF LOT 9 OF ORRSDALE ADDITION 14 -13-19	8175	0	\$171,900
220014311170000	220014311170000	1052981	15243	01	R	0583	4	RU	3501	WILCOT RONALD L AND DEBRA M	02411	WOODLAND AVE	59802	2411 WOODLAND AVE			MISSOULA	MT	59802-3431	ORRSDALE-S 96' OF LOT 17	14947	0	\$193,500
220014311160000	220014311160000	1569901	12132	01	R	0583	4	RU	3501	GABET EMMANUEL F	02407	WOODLAND AVE	59802	2407 WOODLAND AVE			MISSOULA	MT	59802-3431	ORRSDALE-N 78' OF LOT 10	12745	0	\$176,900
220014311150000	220014311150000	311014	9177	01	C	0583	4	CU	3507	TEEPLE JODI L	02401	WOODLAND AVE	59802	2401 WOODLAND AVE			MISSOULA	MT	59802-3431	ORRSDALE-E76' S 118' OF LOT 10	8968	0	\$251,400
220014311140000	220014311140000	2137008	9177	01	R	0583	4	RU	3501	BLOMGREN ROBERT C & MELODY J	00620	LINDEN ST	59802	620 LINDEN ST			MISSOULA	MT	59802-3440	ORRSDALE-W 79' OF S 118' OF LOT 10	9322	0	\$188,200
220014311130000	220014311130000	585707	30485	01	R	0583	4	RU	3501	EVANS JOHN RODNEY & LORETTA MA	00631	LINDEN ST	59802	606 LINDEN ST			MISSOULA	MT	59802-3440	ORRSDALE-LOT 11	30492	0	\$198,900
220014311120000	220014311120000	129903	15243	01	R	0583	4	RU	3501	WYDER DIANE & CHRIS	00508	LINDEN ST	59802	PO BOX 254			NEW VINEYARD	ME	49560-254	ORRSDALE-E1/2 OF LOT 12	15259	0	\$152,500
220014311110000	220014311110000	2335006	15243	01	R	0583	4	RU	3501	MC MAHON JOSEPH C	00504	LINDEN ST	59802	504 LINDEN ST			MISSOULA	MT	59802-3442	ORRSDALE-W1/2 OF LOT 12	15259	0	\$149,900
220014311100000	220014311100000	1903605	12598	01	R	0583	4	RU	3501	PRESTHOLDT RICHARD	00500	LINDEN ST	59802	259 CANDLEWICK LN			BRIDGEWATER	NJ	88071-506	ORRSDALE-S 82' OF LOT 13	12767	0	\$137,300
220014311090000	220014311090000	1059658	10110	01	R	0583	4	RU	3501	HERBEL BRIAN C	02304	DUNCAN DR	59802	2406 DUNCAN DR			MISSOULA	MT	59802-3156	ORRDALE-S 64' N 114' OF LOT 13	9965	0	\$175,200
220014311080000	220014311080000	2050205	7777	01	R	0583	4	RU	3501	DANIELSON J BRUCE	02408	DUNCAN DR	59802	2716 GILBERT AVE			MISSOULA	MT	59802-3204	ORRSDALE-N 78' OF LOT 13	7785	0	\$155,900
220014311070000	220014311070000	926105	15243	01	R	0583	4	RU	3501	HEWITT KENNETH G	02412	DUNCAN DR	59802	2412 DUNCAN DR			MISSOULA	MT	59802-3156	ORRSDALE-S 100' OF LOT 14	15570	0	\$165,500
220014311060000	220014311060000	546401	15243	01	R	0583	4	RU	3501	CROOKSHANKS C E & MARJORIE M	02416	DUNCAN DR	59802	2416 DUNCAN DR			MISSOULA	MT	59802-3156	ORRSDALE-N 96' OF LOT 14	14947	0	\$152,500
220014311050000	220014311050000	2340854	15243	01	R	0583	4	RU	3501	ALEXANDER SHERRI	00511	REDWOOD ST	59802	511 REDWOOD ST			MISSOULA	MT	59802-3123	ORRSDALE-W1/2 OF LOT 15	15259	0	\$186,500
220014311040000	220014311040000	2340703	15243	01	R	0583	4	RU	3501	KRUEGER JANICE K	00521	REDWOOD ST	59802	521 REDWOOD ST			MISSOULA	MT	59802-3123	ORRSDALE-E 80' OF LOT 15	15259	0	\$183,500
220014311030000	220014311030000	2068004	15243	01	R	0583	4	RU	3501	SHERRY RICHARD A & PATRICIA A	00603	REDWOOD ST	59802	603 REDWOOD ST			MISSOULA	MT	59802-3121	ORRSDALE-W 75' OF LOT 16	14700	0	\$165,600
220014311020000	220014311020000	472301	15243	01	R	0583	4	RU	3501	GUDEIRIAN GUYLE & KATHY A	00609	REDWOOD ST	59802	609 REDWOOD ST			MISSOULA	MT	59802-3121	ORRSDALE-E 80.7' OF LOT 16	15817	0	\$173,600
220014311010000	220014311010000	896005	15243	01	R	0583	4	RU	3501	COOPER ALAN H	02415	WOODLAND AVE	59802	2415 WOODLAND AVE			MISSOULA	MT	59802-3431	ORRSDALE-N 100' OF LOT 17	15570	0	\$218,000
220014311000000	220014311000000	1527801	15554	01	R	0583	4	RU	3501	KISLING RYAN	02505	WOODLAND AVE	59802	2505 WOODLAND AVE			MISSOULA	MT	59802-3114	S2 OF LOT 22 OF ORRSDALE	15570	0	\$176,000
220014310990000	220014310990000	1601808	46681	01	R	0583	4	RU	3501	MCGUIRE JAMES R	00602	REDWOOD ST	59802	602 REDWOOD ST			MISSOULA	MT	59802-3122	ORRSDALE-N1/2 LOT 22 & ALL 23	0	1	\$183,300
220014310980000	220014310980000	2390708	31107	01	R	0583	4	RU	3501	DICKINSON KARIN R	00516	REDWOOD ST	59802	516 REDWOOD ST			MISSOULA	MT	59802-3124	ORRSDALE-LOT 24	31145	0	\$161,900
220014310970000	220014310970000	2320203	31107	01	R	0583	4	RU	3501	RAMIREZ DAVID & AMBER	00506	REDWOOD ST	59802	506 REDWOOD ST			MISSOULA	MT	59802-3124	ORRSDALE-LOT 25	31145	0	\$227,700
220014310960000	220014310960000	2418801	12443	01	R	0583	4	RU	3501	WHITMIRE WAYNE T & THERESA	02516	DUNCAN DR	59802	2516 DUNCAN DR			MISSOULA	MT	59802-3157	ORRSDALE-S 80' OF LOT 26	12456	0	\$160,300
220014310950000	220014310950000	1852154	18684	01	R	0583	4	RU	3501	RAOUL WILLIAM H	02520	DUNCAN DR	59802	2520 DUNCAN DR			MISSOULA	MT	59802-3157	ORRSDALE-N 120' OF LOT 26	18684	0	\$237,235
220014310940000	220014310940000	1114604	15554	01	R	0583	4	RU	3501	LERIGET JULIE A	00515	DICKINSON ST	59802	514 HOWELL ST			MISSOULA	MT	59802-2537	ORRSDALE-W 83' OF LOT 27	16600	0	\$156,800
220014310930000	220014310930000	1522254	31107	01	R	0583	4	EP	3149	OPPORTUNITY RESOURCES INC	00519	DICKINSON ST	59802	2821 S RUSSELL ST			MISSOULA	MT	59801-7913	ORRSDALE-E 72.7' OF LOT 27, W 77.5' OF 28	29882	0	\$316,773
220014310920000	22001431092000																						

22001430410000	22001430410000	946405	10489	01	R	0583	4	C	RU	3501	ERICKSON KEITH		02804	WOODLAND AVE	59802	2804 WOODLAND AVE			MISSOULA	MT	59802-3136	BROOKSIDE #1--S1/2 OF LOT 1	10500	0	\$123,200
22001430409000	22001430409000	919402	10489	01	R	0583	4	C	RU	3501	HERMAN WARREN JEFFREY & SUSAN		02806	WOODLAND AVE	59802	2806 WOODLAND AVE			MISSOULA	MT	59802-3136	BROOKSIDE #1-N1/2 OF LOT 1	10480	0	\$157,900
22001430408000	22001430408000	195102	10489	01	R	0583	4	C	RU	3501	PEARSON C B		02810	WOODLAND AVE	59802	2810 WOODLAND AVE			MISSOULA	MT	59802-3136	BROOKSIDE #1-S1/2 OF LOT 2	10500	0	\$167,200
22001430407000	22001430407000	1635601	9690	01	R	0583	4	C	RU	3501	THOMAS DWIGHT		02812	WOODLAND AVE	59802	2812 WOODLAND AVE			MISSOULA	MT	59802-3136	BROOKSIDE #1-N1/2 OF LOT 2	10500	0	\$163,300
22001430404000	22001430404000	1429259	7132	01	R	0583	4	C	RU	3501	WEIST KATHERINE M		02904	WOODLAND AVE	59802	2904 WOODLAND AVE			MISSOULA	MT	59802-3165	BROOKSIDE #1-S1/2 W 90' OF LOT 3 PLAT J2	7200	0	\$165,300
22001430403000	22001430403000	1743305	7132	01	R	0583	4	C	RU	3501	PEARCE STANLEY & MAVIS EILEEN		02906	WOODLAND AVE	59802	2906 WOODLAND AVE			MISSOULA	MT	59802-3165	BROOKSIDE #1-N1/2 OF W 90' OF LOT 3 PLAT J	7200	0	\$169,900
22001430402000	22001430402000	1259701	8960	01	R	0583	4	C	RU	3501	ZARLING KENNETH & BARBARA		02908	WOODLAND AVE	59802	2908 WOODLAND AVE			MISSOULA	MT	59802-3165	BROOKSIDE #1-PLAT 'J' SW 90' X 100' LOT 4	9000	0	\$178,000
22001430311000	22001430311000	6000059	20115	01	R	0583	4		RU	3501	SCHLIEBE BRIAN M & LYNN M		02625	WOODLAND AVE	59802	2625 WOODLAND AVE			MISSOULA	MT	59802-3139	LILLY LOT 1	20135	0	\$170,500
22001430310000	22001430310000	6000062	20113	01	R	0583	4		RU	3501	OLSON JAMES S & JANE E		02615	WOODLAND AVE	59802	2615 WOODLAND AVE			MISSOULA	MT	59802-3139	LILLY LOT 2	20134	0	\$205,400
22001430309000	22001430309000	6000075	20063	01	R	0583	4		RU	3501	MURNEY RICHARD G JR & JENNY DA		00620	DICKINSON	59802	620 DICKINSON ST			MISSOULA	MT	59802-3116	LILLY LOT 3	20085	0	\$269,100
22001430308000	22001430308000	6000088	37607	01	R	0583	4		RU	3501	CUNNERY MICHAEL		00608	DICKINSON ST	59802	608 DICKINSON ST			MISSOULA	MT	59802-3116	LOT 4 OF LILLY ADDITION	0	1	\$155,100
22001430307000	22001430307000	1453807	19601	01	C	0583	4		CU	3507	APPEL MARY C		00520	DICKINSON ST	59802	494 KOKANE BEND DR			COLUMBIA FLIS	MT	59912-9267	COBBAN CAMPSITES-LOT 14 60' X 325'	19500	0	\$188,375
22001430306000	22001430306000	473303	15244	01	R	0583	4		RU	3501	ROSE DAVID BYRON & LESLIE ANNE		00514	DICKINSON ST	59802	514 DICKINSON ST			MISSOULA	MT	59802-3118	TRACT B OF COBBAN'S CAMP SITES OF LOT 14A	14850	0	\$120,500
22001430305000	22001430305000	2319504	5891	01	R	0583	4		RU	3501	VANDERPOEL WASHINGTON I III		00510	DICKINSON ST	59802	510 DICKINSON ST			MISSOULA	MT	59802-3118	COBBAN CAMPSITES LOT 14 A-TRACT T A	5897	0	\$115,300
22001430304000	22001430304000	128201	13295	01	R	0583	4		RU	3501	GRIMES CHRISTINE MICHAELS		02606	DUNCAN DR	59802	2606 DUNCAN DR			MISSOULA	MT	59802-3160	COBBAN CAMPSITES-PLAT M S 100' OF LOT 14	14850	0	\$146,000
22001430312000	22001430312000	3627704	11395	01	R	0583	4		RU	3501	PINSONEAULT STEPHEN & ANN		02612	DUNCAN	59802	2612 DUNCAN DR			MISSOULA	MT	59802-3160	A PORTION OF LOT 2 BLK 2 OF GE RDTS ADDITION & LOT 14	11400	0	\$169,200
22001430303000	22001430303000	1786301	14623	01	R	0583	4		RU	3501	PINSONEAULT HAROLD J & JEAN M		02622	DUNCAN	59802	1101 GREENOUGH DR W APT C7			MISSOULA	MT	59802-3733	TRACT C1 OF GERDTS ADDITION, BLOCK 2 LOT 2 & COBBAN	11400	0	\$44,742
22001430301000	22001430301000	1175353	11253	01	R	0583	4		RU	3501	PARKER GARY D		02622	DUNCAN DR	59802	78 S 21ST ST			SAN JOSE CA	CA	95116-2218	PORTION OF LOT 14 OF COBBAN CA MP SITES	11400	0	\$189,500
22001430212000	22001430212000	236003	11365	01	R	0583	4		RU	3501	HANSON RICHARD J & DEBRA L		00503	ARBOR DR	59802	503 ARBOR DR			MISSOULA	MT	59802-3125	GERDTS-LOT 1 BLK 2	10800	0	\$163,300
22001430211000	22001430211000	269308	18718	01	R	0583	4		RU	3501	PLETSCHER DANIEL H & HOLLY T		00509	ARBOR DR	59802	509 ARBOR DR			MISSOULA	MT	59802-3125	LOT 2A OF GERDTS ADDITION, BLOCK 2, LOT 2 & COBBANS	18718	0	\$228,600
22001430210000	22001430210000	2337500	11134	01	R	0583	4		RU	3501	VIZZUTTI LORETTA R		00515	ARBOR DR	59802	515 ARBOR DR			MISSOULA	MT	59802-3125	GERDTS-LOT 3 BLK 2	11471	0	\$148,800
22001430209000	22001430209000	1880153	13775	01	R	0583	4		RU	3501	GUTOWSKI SUSAN M		00519	ARBOR ST	59802	519 ARBOR DR			MISSOULA	MT	59802-3125	COBBAN CAMPSITES- PT LOT 13 PL AT Y3	13809	0	\$239,000
22001430208000	22001430208000	6000517	13431	01	R	0583	4		RU	3501	ANDERS DOROTHY ANN		00521	ARBOR ST	59802	521 ARBOR DR			MISSOULA	MT	59802-3125	COBBAN CAMPSITE-PLAT Y4 PT OF LOT 13	13480	0	\$272,000
22001430207000	22001430207000	2496201	19895	01	R	0583	4		RU	3501	YOUNGQUIST RUBY P		02715	WOODLAND DR	59802	2715 WOODLAND AVE			MISSOULA	MT	59802-3137	COBBAN CAMPSITES-PT OF LOT 13 PLAT Y LESS PART SOLD	19776	0	\$150,000
22001430206000	22001430206000	6001199	20888	01	R	0583	4		RU	3501	MATELICH LEWIS & MELANIE		02717	WOODLAND AVE	59802	2717 WOODLAND AVE			MISSOULA	MT	59802-3137	COBBAN CAMPSITES-PT OF LOT 13 PLAT Y2-1	20909	0	\$246,600
22001430205000	22001430205000	6001186	20815	01	R	0583	4		RU	3501	SCHOFIELD GABRIEL J		00517	ARBOR DR	59802	517 ARBOR DR			MISSOULA	MT	59802-3125	LOT 13A OF COBBAN CAMP SITES 14-13-19	20909	0	\$245,900
22001430204000	22001430204000	84351	10403	01	R	0583	4		RU	3501	RISTAU RANDALL L		00520	ARBOR DR	59802	520 ARBOR DR			MISSOULA	MT	59802-3126	GERDTS-LOT 4 BLK 1	10360	0	\$158,300
22001430203000	22001430203000	1312008	11407	01	R	0583	4		RU	3501	SILVERSTEIN ROBIN P & KARIN R		00516	ARBOR DR	59802	516 ARBOR DR			MISSOULA	MT	59802-3126	GERDTS-LOT 3 BLK 1	10486	0	\$233,700
22001430202000	22001430202000	492301	10309	01	R	0583	4		RU	3501	BRENNAN AN AMER		00510	ARBOR DR	59802	1200 SUNSET VIEW DR			AKRON OH	OH	44313-7839	GERDTS-LOT 2 BLK 1	10000	0	\$67,500
22001430201000	22001430201000	2496105	16182	01	R	0583	4		RU	3501	YOUNGQUIST DONALD R & THERESA		02740	DUNCAN DR	59802	2740 DUNCAN DR			MISSOULA	MT	59802-3162	GERDTS-LOT 1 BLK 1	16200	0	\$140,700
22001430111000	22001430111000	3267700	19979	01	R	0583	4		RU	3501	MCLEOD JAMES P		02835	WOODLAND AVE	59802	2835 WOODLAND AVE			MISSOULA	MT	59802-3135	STETLER LOTS-LOT A .46AC	20000	0	\$191,700
22001430110000	22001430110000	988409	32904	01	R	0583	4		RU	3501	HUGUET CLAUDE A & DONNA G		02780	DUNCAN DR	59802	2780 DUNCAN DR			MISSOULA	MT	59802-3162	COBBAN CAMPSITES-S 125' OF W 2 50' OF LOT 12	31233	0	\$209,200
22001430109000	22001430109000	2163707	38776	01	R	0583	4		RU	3501	FRANCE TIMOTHY H		02800	DUNCAN DR	59802	2800 DUNCAN DR			MISSOULA	MT	59802-3164	N185 FT W250 FT OF LOT 12 OF COBBAN CAMP SITES 14-13-	0	1	\$320,600
22001430108000	22001430108000	6001320	25168	01	R	0583	4		RU	3501	GIULIANI JAMES & MARY K		02900	DUNCAN DR	59802	2900 DUNCAN DR			MISSOULA	MT	59802-3270	KELLOGG ESTATES-LOT 3	25178	0	\$248,200
22001430107000	22001430107000	6001304	25167	01	R	0583	4		RU	3501	ALLMACHER DAVID HAROLD		00504	MOUNTAIN VIEW DR	59802	504 MOUNTAIN VIEW DR			MISSOULA	MT	59802-3134	KELLOGG ESTATES-LOT 1	25178	0	\$325,400
22001430106000	22001430106000	6001317	38761	01	R	0583	4		RU	3501	VINCI CAROLYN KAY		00510	MOUNTAIN VIEW DR	59802	510 MOUNTAIN VIEW DR			MISSOULA	MT	59802-3134	KELLOGG ESTATES-LOT 2	0	1	\$332,900
22001430105000	22001430105000	6001333	38774	01	R	0583	4		RU	3501	BRENNAN ELIZABETH A		00516	MOUNTAIN VIEW DR	59802	516 MOUNTAIN VIEW DR			MISSOULA	MT	59802-3134	KELLOGG ESTATES-LOT 1	0	1	\$348,100
22001430104000	22001430104000	1112802	50201	01	R	0583	4		VU		HULSEY S MARK & AUDREY L		00655	MOUNTAIN VIEW DR	59802	655 MOUNTAIN VIEW DR			MISSOULA	MT	59802-3131	COBBAN CAMPSITES-PLAT K PT OF LOT 11	5010	0	\$55,263
22001430103000	22001430103000	2171006	28053	01	R	0583	4		RU	3501	HULSEY S MARK & AUDREY		00655	MOUNTAIN VIEW DR	59802	655 MOUNTAIN VIEW DR			MISSOULA	MT	59802-3131	COBBAN CAMPSITES-PLAT S PT OF LOT 11	29055	0	\$315,519
22001430102000	22001430102000	6001346	29619	01	R	0583	4		RU	3501	CURTIS MICHAEL B		00625	W MOUNTAIN VIEW DR	59802	625 MOUNTAIN VIEW DR			MISSOULA	MT	59802-3131	KELLOGG ESTATES-LOT 5	30144	0	\$300,100
22001430101000	22001430101000	1011607	95780	01	R	0583	4		RU	3501	STETLER HARRY N & EXIE		02829	WOODLAND AVE	59802	2829 WOODLAND AVE			MISSOULA	MT	59802-3135	STETLER LOTS-LOT B 2.1AC	0	2	\$295,700
22001423307000	22001423307000	2432309	21184	01	R	0583	4		C	RU	PETERSON KATHLEEN		00600	CITY DR	59802	700 CITY DR			MISSOULA	MT	59802-3608	TR B COS 204A IN W2 SW4 14-13-19	21206	0	\$173,000
22001423306000	22001423306000	2432203	84679	01	R	0583	4		C	RU	R & L TRUST		00600	CITY DR	59802	600 CITY DR			MISSOULA	MT	59802-3608	IN SW4 SW4 14-13-19	0	2	\$420,300
22001423305000	22001423305000	1162403	8886	01	R	0583	4		RU	3501	ROSE ELAINE		00704	CITY DR	59802	704 CITY DR			MISSOULA	MT	59802-3608	IN SW4 SW4 14-13-19	8525	0	\$110,400
22001423304000	22001423304000	2326654	10832	01	R	0583	4		RU	3501	PRAY TRACY SCOTT		00710	CITY DR	59802	710 CITY DR			MISSOULA	MT	59802-3608	IN SW4 SW4 120' X 96.3' 14-13-19	11556	0	\$140,600
22001423303000	22001423303000	1558404	6971	01	R	0583	4		RU	3501	CAREY STEVEN S & ELLEN M		00714	CITY DR	59802	714 CITY DR			MISSOULA	MT	59802-3608	TRACT B IN S2 SW4 SW4 14-13-19	27878	0	\$259,600
22001423302000	22001423302000	5842839	6132	01	R	0583	4		RU	3501	CAREY CRAIG C		00720	CITY DR	59802	720 CITY DR			MISSOULA	MT	59808-1709	TRACT A IN S2 SW4 SW4 14-13-19	6280	0	\$95,600
22001423301000	22001423301000	1563252	12412	01	R	0583	4		RU	3501	KOORIS JEFF		00726	CITY DR	59802	726 CITY DR			MISSOULA	MT	59802-3608	IN SW4 SW4 127.1' X 96.3' 14-13-19	12240	0	\$199,400
22001423017000	22001423017000	1979708	8053	01	R	0583	4		VU		HENDERSON KIRK A		01601	MISSOULA AVE	598										

220014227010000	220014227010000	1010201	7552	01	R	0583	4	RU	3501	HARTZ CLARA P	00950	RICHARD ST	59802	950 RICHARD ST			MISSOULA	MT	59802-3580	PARK ADD-LOTS 1 & 2 BLK 3 & AL LEY	7560	0	\$132,200
220014226160000	220014226160000	3103201	9358	01	R	0583	4	RU	3501	SIMON BARBARA	00925	WILLIAM ST	59802	1750 MISSOULA AVE			MISSOULA	MT	59802-3548	LOTS 10 TO 12 OF PARK ADDITION BLK 1 & POR OF VACANT	10620	0	\$168,500
220014226150000	220014226150000	1064704	6593	01	R	0583	4	RR	3501	LAMOUN MICHAEL SANIT JOHN	01845	RATTLESNAKE DR	59802	124 N 2ND ST W			MISSOULA	MT	59802-3621	LOTS 11 & 12 OF PARK ADDITION BLK 2 14-13-19	6600	0	\$170,400
220014226140000	220014226140000	1068500	7692	01	R	0583	4	RU	3501	KUHNLE ROBERT DAVID SR	01843	RATTLESNAKE DR	59802	2303 GILBERT AVE			MISSOULA	MT	59802-3502	N10' OF LOT 8 & ALL OF 9 & 10 OF PARK ADDITION BLK 2	7700	0	\$133,900
220014226130000	220014226130000	783907	5494	01	R	0583	4	RR	3501	JOHNSON KORY P & CASON F	01841	RATTLESNAKE DR	59802	PO BOX 8073			MISSOULA	MT	59807-8073	LOT 7 & S20' OF 3' OF PARK ADDITION BLK 2 14-13-19	5500	0	\$147,500
220014226120000	220014226120000	983207	9890	01	R	0583	4	RR	3501	PALES RON G & GAYLE J	01835	RATTLESNAKE DR	59802	3616 W CENTRAL AVE			MISSOULA	MT	59804-6326	LOTS 4 TO 6 OF PARK ADDITION BLK 2 14-13-19	9900	0	\$124,300
220014226110000	220014226110000	2038050	11428	01	R	0583	4	RR	3501	BOYD LANCE R & FERN G	01833	RATTLESNAKE DR	59802	1833 RATTLESNAKE DR			MISSOULA	MT	59802-3529	LOTS 1 TO 12 OF PARK ADDITION BLK 2 & STREET ADJAC ENT	11000	0	\$149,600
220014226100000	220014226100000	1718320	4382	01	C	0583	4	TU	3507	DERRICK JUDITH KAY LONG	01705	RATTLESNAKE DR	59802	4240 DUNCAN DR			MISSOULA	MT	59802-3288	PARK-W OF HWY. LOT 5, FRAC OF 6 & 7 BLK 1 LESS RW PT	3600	0	\$127,900
220014226090000	220014226090000	2447006	4768	01	R	0583	4	CU	3501	BLOOMBERG STACI L	01604	MISSOULA AVE	59802	1604 MISSOULA AVE APT D			MISSOULA	MT	59802-3800	LOT 21A OF PARK ADDITION BLK 1 OF LOTS 21 TO 24 14-13	4773	0	\$198,800
220014226080000	220014226080000	1595600	10605	01	R	0583	4	RR	3501	WING WENDY A	01610	MISSOULA AVE	59802	1610 MISSOULA AVE			MISSOULA	MT	59802-3855	LOTS 18 TO 20 OF PARK ADDITION BLK 1 & POR OF VAC ALL	10620	0	\$106,700
220014226070000	220014226070000	2055609	4423	01	R	0583	4	RR	3501	SMITH JOSEPH D	01734	MISSOULA AVE	59802	2140 GREENOUGH DR W			MISSOULA	MT	59802-3566	LOT 17A OF PARK ADDITION BLK 1 OF LOTS 9A & 17A 14-1	4433	0	\$119,100
220014226060000	220014226060000	2075109	5294	01	R	0583	4	RR	3501	BECK CATHERINE E	01742	MISSOULA AVE	59802	2015 BAXTER DR			BOZEMAN	MT	59715-5978	LOT 15 & N2 OF 16 OF PARK ADDITION BLK 1 14-13-19	5310	0	\$114,700
220014226050000	220014226050000	2082300	8248	01	R	0583	4	RR	3501	SIMON BARBARA	01750	MISSOULA AVE	59802	1750 MISSOULA AVE			MISSOULA	MT	59802-3548	LOTS 13 & 14 OF PARK ADDITION BLK 2 & POR OF VACAN T	7080	0	\$148,100
220014226040000	220014226040000	825806	14844	01	R	0583	4	RR	3501	HALSELL PATRICK	01802	MISSOULA AVE	59802	1802 MISSOULA AVE			MISSOULA	MT	59802-3546	LOTS 21 TO 24 OF PARK ADDITION DJ BLK 2 & STREET ADJA	19800	0	\$165,800
220014226030000	220014226030000	983303	8241	01	R	0583	4	RR	3501	MCDONALD CHARLES D	01802	MISSOULA AVE	59802	1802 MISSOULA AVE			MISSOULA	MT	59802-3546	S15' OF LOT 18 & ALL OF 19 & 20 OF PARK ADDITION BLK	8850	0	\$167,100
220014226020000	220014226020000	1025302	11538	01	R	0583	4	RR	3501	LYNCH MICHAEL & JULIE	01840	MISSOULA AVE	59802	1840 MISSOULA AVE			MISSOULA	MT	59802-3546	LOTS 15 TO 17 & N10' LOT 18 OF PARK ADDITION BLK 2	11550	0	\$164,900
220014226010000	220014226010000	169605	6593	01	R	0583	4	RR	3501	SELLS PAUL D & D KATE	01944	MISSOULA AVE	59802	1844 MISSOULA AVE			MISSOULA	MT	59802-3546	LOTS 13 & 14 OF PARK ADDITION BLK 2 14-13-19	8600	0	\$159,600
220014225130000	220014225130000	5945605	10609	01	R	0583	4	RR	3501	GRANATH WILLARD O JR & KIMBERL	01930	RATTLESNAKE DR	59802	1930 RATTLESNAKE DR			MISSOULA	MT	59802-3528	LOTS 16 TO 18 OF PARK ADDITION BLK 16 & 1/2 OF VACAN A	10620	0	\$179,000
220014225120000	220014225120000	5946203	13285	01	R	0583	4	RR	3501	MARSOLEK MICHAEL D	01965	RAYMOND AVE	59802	1985 RAYMOND AVE			MISSOULA	MT	59802-3513	LOTS 10 TO 12 OF PARK ADDITION BLK 16 INCLUDING VAC A	10620	0	\$163,000
220014225110000	220014225110000	5946107	13285	01	R	0583	4	RU	3501	RIGO DAVID J	01945	RAYMOND AVE	59802	1575 OVERHILL ST			YORKTOWN HTS	NY	10586-5408	LOTS 7 TO 9 OF PARK ADDITION BLK 16 & 9 OF VACAN T A	10620	0	\$179,200
220014225100000	220014225100000	5946001	13285	01	R	0583	4	RR	3501	HURD MICHAEL C & SHEILA A	01925	RAYMOND AVE	59802	1925 RAYMOND AVE			MISSOULA	MT	59802-3513	LOTS 4 TO 6 OF PARK ADDITION BLK 16 & 1/2 OF VACAN T	13299	0	\$171,900
220014225090000	220014225090000	5945903	13285	01	R	0583	4	RR	3501	KUHNLE ROBERT DAVID JR & KIRST	01905	RAYMOND AVE	59802	1905 RAYMOND AVE			MISSOULA	MT	59802-3513	LOTS 1 TO 3 BLK 16 OF PARK ADDITION & 8' OF VACALY	10140	0	\$166,700
220014225080000	220014225080000	5945807	10609	01	R	0583	4	EP	3149	SALVATION ARMY	01000	RICHARD ST	59802	PO BOX 8123			MISSOULA	MT	59807-8123	LOTS 22 TO 24 OF PARK ADDITION BLK 16 & 1/2 OF VACAN T	10620	0	\$162,135
220014225070000	220014225070000	5945701	10609	01	R	0583	4	RR	3501	CLOVER MARVIN L	01920	E RATTLESNAKE DR	59802	1920 RATTLESNAKE DR			MISSOULA	MT	59802-3528	LOTS 19 TO 21 OF PARK ADDITION & 1/2 OF VACANT ALLEY Y	10620	0	\$161,900
220014225060000	220014225060000	2464404	886525	01	R	0583	4	AR		BENNETT VANCE L & PAMELA S	01007	RICHARD ST	59802	2022 RAYMOND AVE			MISSOULA	MT	59802-3518	TRACT 2 COS 5751 IN SW4 SEC 1, 4, 13-19	0	21	\$951
220014225050000	220014225050000	2415305	33985	01	R	0583	4	RR	3501	AMBROSE ROBERT & RACHEL	01007	RICHARD ST	59802	1027 RICHARD ST			MISSOULA	MT	59802-3507	TRACT A COS 4536 IN SE4 SW4 14-13-19	0	1	\$243,400
220014225040000	220014225040000	2025604	32772	01	R	0583	4	RR	3501	SCHREIBER LAVONA E	01800	RATTLESNAKE DR	59802	1800 RATTLESNAKE DR			MISSOULA	MT	59802-3530	LOTS 19 TO 24 OF PARK ADDITION BLK 17 IN SE4 SW4 14-	19800	0	\$176,900
220014225030000	220014225030000	707809	19778	01	R	0583	4	RR	3501	MURPHY WILLIAM T	01003	RICHARD ST	59802	1003 RICHARD ST			MISSOULA	MT	59802-3507	LOTS 13 TO 18 OF PARK ADDITION BLK 17 14-13-19	19800	0	\$166,800
220014225020000	220014225020000	131306	9992	01	R	0583	4	RR	3501	VOEGELE JIM	01011	RICHARD ST	59802	1011 RICHARD ST			MISSOULA	MT	59802-3507	LOTS 10 TO 12 OF PARK ADDITION BLK 17 14-13-19	10620	0	\$162,800
220014225010000	220014225010000	1010105	10609	01	R	0583	4	RR	3501	BRINK DAVID A	01942	RATTLESNAKE DR	59802	1942 RATTLESNAKE DR			MISSOULA	MT	59802-3528	LOTS 13 TO 15 OF PARK ADDITION & W2 OF VACANT ALLEY B	10620	0	\$113,700
220014224040000	220014224040000	1277207	458552	01	R	4583	4	AR	3501	EDDY A CRAIG & MARGARET T	59802	539 UNIVERSITY AVE	59802	539 UNIVERSITY AVE			MISSOULA	MT	59801-4435	PORTION OF TRACT A COS 5498 IN E2 14-13-19 "OTHER	0	11	\$25,530
220014224050000	220014224050000	3778000	580186	01	R	2583	4	RU	3501	EDDY A CRAIG & MARGARET T	59803	539 UNIVERSITY AVE	59802	539 UNIVERSITY AVE			MISSOULA	MT	59801-4435	PORTION OF TRACT A COS 5498 IN E2 14-13-19 "OTHER	0	13	\$179,347
220014224020000	220014224020000	3506	16930	01	R	0583	4	RU	3501	DUNNE ROBIN E	02228	RATTLESNAKE DR	59802	2228 RATTLESNAKE DR			MISSOULA	MT	59802-3522	PARK-LOTS 1 & 2, FRAC OF 3 TO 12 BLK 42 PT VAC ALLEY C	23392	0	\$133,900
220014224010000	220014224010000	1715206	9409	01	R	0583	4	RU	3501	MURPHY JOHN T &	02218	RATTLESNAKE DR	59802	2218 RATTLESNAKE DR			MISSOULA	MT	59802-3522	A TRACT IN NE4 SW4 PARK ADDITI ON 14-13-19 PT OF LAUR C	0	1	\$167,700
220014223100000	220014223100000	3216203	13944	01	R	0583	4	RU	3501	BENNETT PAMELA S	59802	2022 RAYMOND AVE	59802	2022 RAYMOND AVE			MISSOULA	MT	59802-3515	LOT 4 OF PARK ADDITION BLK 22 OF LOTS A B C D E 14-13	13959	0	\$263,900
220014223080000	220014223080000	75101	961878	01	R	0583	4	RR	3501	FOLTZ RONALD PAUL & GERTRUDE B	02232	RATTLESNAKE DR	59802	2232 RATTLESNAKE DR			MISSOULA	MT	59802-3522	IN NW4 SE4 14-13-19	0	23	\$253,097
220014223060000	220014223060000	2321907	71733	01	R	0583	4	RU	3501	VAN METER WAYNE P & HELEN B	02224	1/2 RATTLESNAKE DR	59802	2224 1/2 RATTLESNAKE DR			MISSOULA	MT	59802-3522	IN NW4 SE4 14-13-19	0	2	\$161,400
220014223070000	220014223070000	508201	52424	01	R	0583	4	RU	3501	BUGONI PETER T	02224	RATTLESNAKE DR	59802	2224 RATTLESNAKE DR			MISSOULA	MT	59802-3522	D.E. 2273 & TWO 20' STRIPS FOR ACCESS IN NW4 SE4 IN I	32234	0	\$191,000
220014223050000	220014223050000	2376306	37760	01	C	0583	4	EP	3150	MISSOULA HOUSING AUTHORITY	02222	RATTLESNAKE DR	59802	1235 34TH ST			MISSOULA	MT	59801-8516	LOTS 6 TO 12 BLK 32 & LOTS 10 TO 12 BLK 41 OF PARK ADJ	0	3	\$344,400
220014223040000	220014223040000	1591006	22218	02	R	0583	4	RR	3501	MCDONALD FAMILY LIMITED PARTNE	02110	GILBERT AVE	59802	PO BOX 1797			POLSON	MT	59860-1797	LOTS 21 TO 24 BLK 32 OF PARK ADDITION & VACANT ST S &	22200	0	\$136,900
220014223030000	220014223030000	1590908	34252	01	R	0583	4	RR	3501	MCDONALD FAMILY LIMITED PARTNE	02120	GILBERT AVE	59802	PO BOX 1797			POLSON	MT	59860-1797	FRAC OF LOT 13, ALL OF 14 TO 20 BLK 32 OF PARK ADJ	33570	0	\$151,200
220014223020000	220014223020000	1590600	71081	03	C	0583	4	CJ	3507	MCDONALD FAMILY LIMITED PARTNE	01008	JENNIE CT	59802	PO BOX 1797			POLSON	MT	59860-1797	LOTS 1 TO 10 & LOTS 17 TO 24 BLK 23 OF PARK ADJ DITON	72597	0	\$601,900
220014223010000	220014223010000	2464202	388633	01	R	0583	4	RU	3501	THOMPSON BONNIE L	02000	RAYMOND AVE	59802	2000 RAYMOND AVE			MISSOULA	MT	59802-3515	LOTS 22,23 & 24 BLK 22 OF PARK ADDIN, VAC STREET ADJ	0	9	\$240,300
220014222020000	22001422202000																						

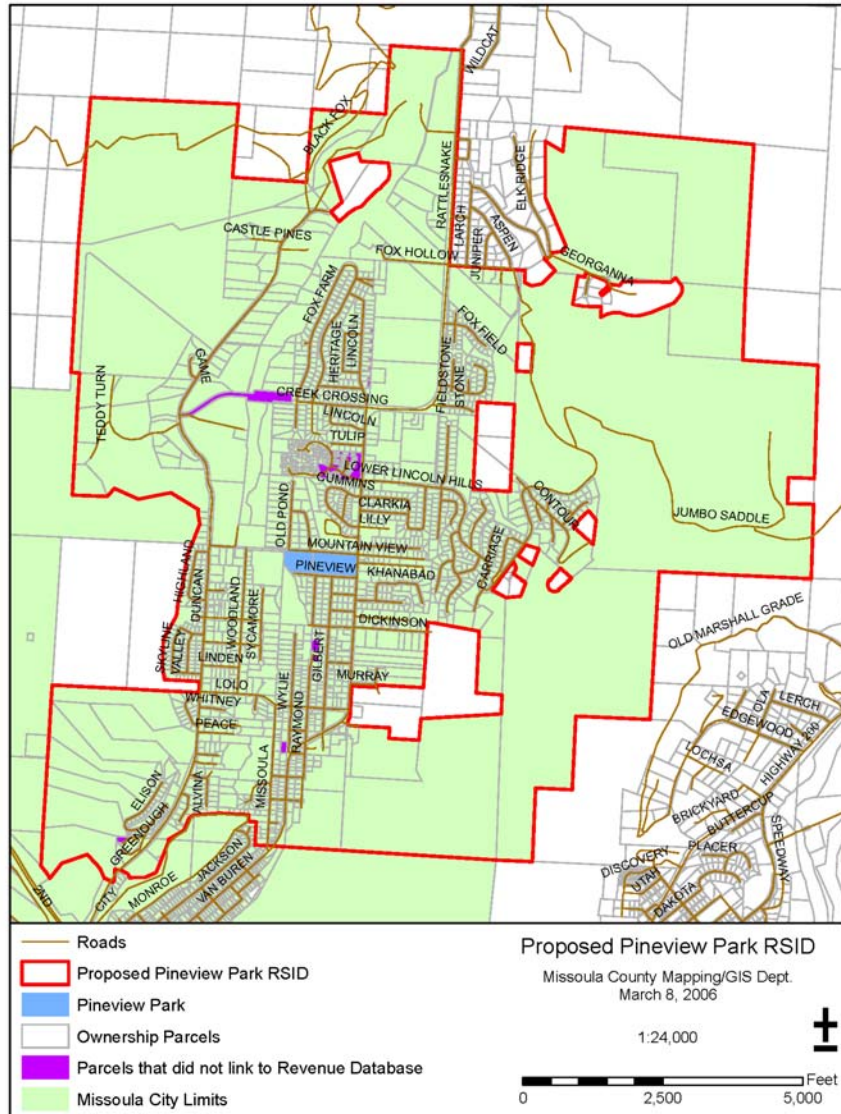
220014215130000	220014215130000	341601	8841	01	R	0583	4	RU	3501	DAY SHIRLEY M	02401 WYLLIE AVE	59802	2401 WYLLIE AVE			MISSOULA	MT	59802-3429	PARK-LOT 1, S1/2 OF 2 BLK 8 ADJ J ST & ALLEY	8850	0	\$133,400	
220014215120000	220014215120000	988207	6593	01	R	0583	4	RU	3501	HUGO RIPLEY S	02407 WYLLIE AVE	59802	2407 WYLLIE AVE			MISSOULA	MT	59802-3429	PARK-LOTS 3 & 4 BLK 8 ADJ ST & ALLEY	6600	0	\$165,900	
220014215110000	220014215110000	988101	12783	01	R	0583	4	VR		HUGO RIPLEY S		59802	2407 WYLLIE AVE			MISSOULA	MT	59802-3429	PARK-N2 OF LOT 2, ALL OF 21 & 22, N2 OF 23 BLK 8 ADJ	6600	0	\$22,127	
220014215090000	220014215090000	557802	20844	01	R	0583	4	RU	3501	ELLIOTT MARGARET & MURRAY	02419 WYLLIE AVE	59802	PO BOX 657			DAVENPORT	WA	99122-0657	PARK-LOTS 5 TO 7, E OF CRK 18 TO 20 BLK 8 PT STREET &	20700	0	\$109,005	
220014215080000	220014215080000	2129901	23279	01	R	0583	4	C	RR	3501	PETERSON RONALD K	02425 WYLLIE AVE	59802	2425 WYLLIE AVE			MISSOULA	MT	59802-3429	PARK-LOTS 10 TO 10 & 15 TO 17 B LK 8 PT VAC ALLEY	23958	0	\$337,800
220014215070000	220014215070000	992508	23289	01	R	0583	4	C	RR	3501	WING H STEPHEN & BETTY THOMPSON	02439 WYLLIE AVE	59802	2439 WYLLIE AVE			MISSOULA	MT	59802-3429	PARK-LOTS 11 TO 14 BLK 8 PT VAC ST & ALLEY	23958	0	\$234,000
220014215060000	220014215060000	85904	23264	01	R	0583	4	C	RR	3501	BENTON JEFFREY A	02501 WYLLIE AVE	59802	1100 COLORADO BLVD APT 103			DENVER	CO	80206-3643	PARK-LOTS 1 & 2, 37 & 38 BLK 9 N 30 POWELL ST ALLEY	23958	0	\$208,900
220014215050000	220014215050000	1699558	23218	01	R	0583	4	C	RR	3501	MATHESON PENNY W	02507 WYLLIE AVE	59802	2507 WYLLIE AVE			MISSOULA	MT	59802-3260	PARK-LOTS 3 THRU 5 & 34 THRU 3 B LK 9 ALLEY ADJ	23958	0	\$188,200
220014215040000	220014215040000	2212509	23212	01	R	0583	4	C	RR	3501	MELCHER JOHN D & RUTH E	02519 WYLLIE AVE	59802	2519 WYLLIE AVE			MISSOULA	MT	59802-3260	PARK-LOTS 6 THRU 8 & 31 THRU 3 B LK 9	23958	0	\$211,700
220014215030000	220014215030000	2212605	23206	01	R	0583	4	C	RR	3501	MELCHER JOHN D & RUTH E	WILEY ST	59802	2519 WYLLIE AVE			MISSOULA	MT	59802-3260	PARK-LOTS 9 THRU 11 & 28 THRU 30 BLK 9 ALLEY ADJ	23958	0	\$94,728
220014215020000	220014215020000	708605	34796	01	R	0583	4	VU		GERAGHTY THOMAS E TRUSTEE & MA		59802	1718 TRAYNOR DR			MISSOULA	MT	59802-3638	PARK-LOTS 12 TO 15, E2 OF 16 & 23, ALL OF 24 & 27 BL	0	1	\$30,555	
220014214160000	220014214160000	1220859	8841	01	R	0583	4	RU	3501	CARLSON GEOFREY W	02520 WYLLIE AVE	59802	2540 WYLLIE AVE			MISSOULA	MT	59802-3261	PARK-LOTS 28 & 29, N1/2 OF 30 BLK 10 PT VAC ALLEY	8850	0	\$116,500	
220014214150000	220014214150000	1758704	8841	01	R	0583	4	RU	3501	O'HERREN JAMES PATRICK	02516 WYLLIE AVE	59802	25830 NINE MILE RD			HUSON	MT	59846-9637	S2 OF LOT 30 & ALL OF 31 & 32 IN PARK ADDITION BLK 10	8850	0	\$130,200	
220014214140000	220014214140000	1815507	64639	01	R	0583	4	RU	3501	CHAPMAN WILLIAM E &	02510 WYLLIE AVE	59802	9904 E 200 S			ZIONSVILLE	IN	46077-9702	LOTS 1 TO 11, 33 TO 35 & N2 OF 36 OF PARK ADDITI ON B	0	1	\$192,000	
220014214130000	220014214130000	1526001	7073	01	R	0583	4	RU	3501	MARROW JEREMIE S	02504 WYLLIE AVE	59802	2504 WYLLIE AVE			MISSOULA	MT	59802-3261	S2 OF LOT 36 & ALL OF 37 & N2 OF 38 OF PARK ADDITION	7080	0	\$120,500	
220014214120000	220014214120000	2418503	5304	01	R	0583	4	RU	3501	WHITMIRE DOROTHY A	02500 WYLLIE AVE	59802	2500 WYLLIE AVE			MISSOULA	MT	59802-3261	S2 OF LOT 38 IN PARK ADDITION BLK 11 & POR OF VAC AL	5310	0	\$119,700	
220014214110000	220014214110000	1556060	21218	01	R	0583	4	RU	3501	QLINGER CHARLES W JR & SUZAN J	02436 WYLLIE AVE	59802	2436 WYLLIE AVE			MISSOULA	MT	59802-3430	LOTS 11 TO 14 OF PARK ADDITION BLK 11 & POR OF VAC AL	15104	0	\$139,000	
220014214100000	220014214100000	835303	7073	01	R	0583	4	EP		MISSOULA DEVELOPMENTAL SERVICE		59802	1005 MARSHALL ST			MISSOULA	MT	59801-3608	LOTS 15 & 16 OF PARK ADDITION BLK 11 & POR OF VAC AL	7080	0	\$57,850	
220014214090000	220014214090000	835256	7073	01	R	0583	4	EP		MISSOULA DEVELOPMENTAL SERVICE		59802	1005 MARSHALL ST			MISSOULA	MT	59801-3608	LOTS 15 & 16 OF PARK ADDITION BLK 11 & POR OF VAC AL	7080	0	\$57,850	
220014214080000	220014214080000	139159	7073	01	R	0583	4	RU	3501	RHODES JOHN P	02422 WYLLIE AVE	59802	2000 DOOD RANCH RD			MISSOULA	MT	59802-8682	LOTS 19 & 20 OF PARK ADDITION BLK 11 & POR OF VAC AL	7080	0	\$122,300	
220014214070000	220014214070000	693103	10609	01	R	0583	4	RU	3501	DULA MARK T & MARJORIE S	02408 WYLLIE AVE	59802	2408 WYLLIE AVE			MISSOULA	MT	59802-3430	LOTS 21 TO 23 OF PARK ADDITION BLK 11 & POR OF VAC AL	10620	0	\$142,300	
220014214060000	220014214060000	1124407	10609	01	R	0583	4	RU	3501	KRESS MICHAEL E & KATHRYN P	02400 WYLLIE AVE	59802	2400 WYLLIE AVE			MISSOULA	MT	59802-3430	LOT 24 OF PARK ADDITION BLK 11 & ST & ALLEY ADJ 14 -1	10620	0	\$198,700	
220014214050000	220014214050000	1588303	11788	01	R	0583	4	RU	3501	HAMMOND APRILLE I	02324 WYLLIE AVE	59802	2324 WYLLIE AVE			MISSOULA	MT	59802-3532	LOTS 13 TO 15 & N1/3 OF 16 OF PARK ADDITION BLK 12 &	11800	0	\$142,100	
220014214040000	220014214040000	1211407	5894	01	R	0583	4	RU	3501	PHILLIPS JOSEPH B	02320 WYLLIE AVE	59802	2320 WYLLIE AVE			MISSOULA	MT	59802-3532	S2/3 OF LOT 16 & ALL OF 17 IN PARK ADDITION BLK 12 &	5900	0	\$120,200	
220014214030000	220014214030000	2386407	8251	01	R	0583	4	RU	3501	JAMES DONALD V & LUCILLE M	02314 WYLLIE AVE	59802	2314 WYLLIE AVE			MISSOULA	MT	59802-3532	LOTS 18 & 19 & N1/2 OF 20 IN PARK ADDITION BLK 12 & P	8260	0	\$107,700	
220014214020000	220014214020000	2440704	8251	01	R	0583	4	RU	3501	DUSON KERRAL BAILEY A	02310 WYLLIE AVE	59802	2310 WYLLIE AVE			MISSOULA	MT	59802-3532	S2/2 OF LOT 20 & ALL OF 21 & N2 OF 22 IN PARK AD	8260	0	\$138,600	
220014214010000	220014214010000	572206	8251	01	R	0583	4	RU	3501	LEDFOR DAVID KEITH	02300 WYLLIE AVE	59802	2300 WYLLIE AVE			MISSOULA	MT	59802-3532	S1/2 OF LOT 22 & ALL OF 23 & 24 IN PARK ADDITION BLK	8260	0	\$135,200	
220014213090000	220014213090000	1388301	10609	01	C	0583	4	CR	3501	MCDONALD CRAIG F	02303 RAYMOND AVE	59802	1220 POWELL ST			MISSOULA	MT	59802-3418	LOTS 1 THRU 3 BLOCK 12 OF PARK ADDITION	10620	0	\$156,600	
220014213080000	220014213080000	1718208	10609	01	R	0583	4	RU	3501	GEORGE WENDY S	02307 RAYMOND AVE	59801	2307 RAYMOND AVE			MISSOULA	MT	59802-3509	LOTS 4 TO 6 BLK 12 OF PARK ADDITION AND 1/2 VACATED	10620	0	\$153,000	
220014213070000	220014213070000	247008	8841	01	R	0583	4	RU	3501	HUNTER DEBORA	02317 RAYMOND AVE	59802	2317 RAYMOND AVE			MISSOULA	MT	59802-3509	LOTS 7 & 8, S1/2 OF 9 BLK 12 O F PARK ADDITION & 1/2	8850	0	\$139,300	
220014213060000	220014213060000	1569709	8841	01	R	0583	4	RU	3501	MCDROOM WILLIAM H & GRETCHEN G	02321 RAYMOND AVE	59802	2321 RAYMOND AVE			MISSOULA	MT	59802-3509	N1/2 OF LOT 9, ALL OF 10 & 11 IN BLOCK 12 OF PARK AD	8850	0	\$143,400	
220014213050000	220014213050000	724707	10609	01	R	0583	4	RU	3501	REID JACK M & KATHY J	02325 RAYMOND AVE	59802	2325 RAYMOND AVE			MISSOULA	MT	59802-3509	LOT 12 BLK 12 OF PARK ADDITION, & 1/2 VACATED ALLEY	10620	0	\$154,600	
220014213040000	220014213040000	2038807	8841	01	R	0583	4	RU	3501	GAHAGAN MARK T & PATRICIA L PI	02405 RAYMOND AVE	59802	2405 RAYMOND AVE			MISSOULA	MT	59802-3413	LOTS 1 & 2, S1/2 OF 3 BLK 11 O F PARK ADDITION & 1/2	8850	0	\$181,600	
220014213030000	220014213030000	835201	8841	01	R	0583	4	RU	3501	SENTERFEIT FORREST	02407 RAYMOND AVE	59802	2407 RAYMOND AVE			MISSOULA	MT	59802-3413	N1/2 OF LOT 3, ALL OF 4 & 5 IN BLK 11 OF PARK ADDITIO	8850	0	\$143,500	
220014213020000	220014213020000	715502	8841	01	R	0583	4	RU	3501	BROCKHAUS MARGARET L	02409 RAYMOND AVE	59802	2409 RAYMOND AVE			MISSOULA	MT	59802-3413	LOTS 6 & 7, S1/2 OF 8, ALL IN BLK 11 OF PARK ADDITION & 1	8850	0	\$147,000	
220014213010000	220014213010000	1017407	8841	01	R	0583	4	VU		OGRIN KIRK V		59802	PO BOX 2125			BIGFORK	MT	59911-2125	N1/2 OF LOT 22, ALL OF 9 & 10 BLK 11 OF PARK ADDITION	8850	0	\$19,821	
220014212250000	220014212250000	190400	8841	01	R	0583	4	RU	3501	VIZZUTTI BEVERLY	02304 RAYMOND AVE	59802	405 VILLAGE PL			MISSOULA	MT	59802-3143	PARK-S 15' OF LOT 22, ALL OF 2 3 & 24 BLK 25	8850	0	\$141,600	
220014212220000	220014212220000	567807	7073	01	R	0583	4	RU	3501	ELMORE HUGH E & JOAN E	02308 RAYMOND AVE	59802	2308 RAYMOND AVE			MISSOULA	MT	59802-3510	PARK-S 15' OF LOT 20, ALL OF 2 1, N 15' OF 22 BLK 25	7080	0	\$148,100	
220014212200000	220014212200000	1027306	8841	01	R	0583	4	RU	3501	JASUMBACK ANTHONY E & JOAN M	02312 RAYMOND AVE	59802	2312 RAYMOND AVE			MISSOULA	MT	59802-3510	PARK-LOTS 18 & 19, 15' OF 20 & 17 BLK 25 PT VAC ALLEY	8850	0	\$147,700	
220014212180000	220014212180000	1841057	8836	01	R	0583	4	RU	3501	KUPPER LAWRENCE D & PEGGY R TR	02316 RAYMOND AVE	59802	2316 RAYMOND AVE			MISSOULA	MT	59802-3510	PARK-S1/2 OF LOT 19, ALL OF 16 & 17 BLK 25 W1/2 ADJ A	8850	0	\$180,200	
220014212160000	220014212160000	1390855	12382	01	R	0583	4	RU	3501	ROBINSON CHERYL	02320 RAYMOND AVE	59802	PO BOX 276			DRUMMOND	MT	59832-0276	PARK-LOTS 13 & 14, N1/2 OF 15 BLK 25 PT VAC ALLEY & ST	12390	0	\$150,300	
220014212140000	220014212140000	1618905	10609	01	R	0583	4	RU	3501	BRAGG ENTERPRISES LLC	2404 RAYMOND AVE	59802	2404 RAYMOND AVE			MISSOULA	MT	59802-3414	PARK-LOTS 23 & 24 BLK 26 PT VAC ALLEY & ST	10620	0	\$130,700	
220014212120000	220014212120000	1052003	7073	01	R	0583	4	RU	3501	FORWOOD LINDA	02406 RAYMOND AVE	59802	MAIL TO JOHNSON DOROTHY			MISSOULA	MT	59802-3414	PARK LOTS 21 & 22 BLK 26 PT VAC ALLEY	7080	0	\$148,500	
220014212090000	220014212090000	5854274	1585	01	C	0583	4	CJ	3507	AINSWORTH R A	02410 RAYMOND AVE	59802	PO BOX 3										

220014208190000	220014208190000	388509	10249	01	R	0583	4	RU	3501	JENSEN PAUL F	02401 E RATTLESNAKE DR	59802	2401 RATTLESNAKE DR			MISSOULA	MT	59802-3416	PARK-LOTS 1 & 2 BLK 44 & VAC S TREETS	10350	0	\$127,700
220014208180000	220014208180000	178406	13665	01	R	0583	4	RU	3501	LANE MAXINE S	02329 E RATTLESNAKE DR	59802	2329 RATTLESNAKE DR			MISSOULA	MT	59802-3519	PARK-LOTS 10 THRU 12 BLK 43 PT VAC ST	13800	0	\$149,900
220014208170000	220014208170000	1713653	17891	01	R	0583	4	RU	3501	SCHMAUSE STEVEN G	02327 E RATTLESNAKE DR	59802	2327 RATTLESNAKE DR			MISSOULA	MT	59802-3519	PARK-E12 OF LOTS 7 THRU 9 BLK 30**ALL OF LOTS 7 THRU 9	17500	0	\$186,600
220014208150000	220014208150000	205502	20498	01	C	0583	4	CU	3507	BOEHLER DORIS C	02301 E RATTLESNAKE DR	59802	3125 OLD POND RD			MISSOULA	MT	59802-3254	PARK-LOTS 1 THRU 6 BLK 43 VAC PARK AVE ADJ	19764	0	\$291,900
220014208140000	220014208140000	2195600	12587	01	R	0583	4	RU	3501	SULARZ ROBERT J	01216 LOLO ST	59802	3265 MOUNTAIN DR			CLINTON	MT	59825-9749	PARK-E 40' OF LOTS 1 THRU 6 BL K 30 PT ST & ADJ	12600	0	\$91,780
220014208130000	220014208130000	745956	14025	01	R	0583	4	RU	3501	TARR SANDI D	01208 LOLO ST	59802	1204 LOLO ST			MISSOULA	MT	59802-3550	PARK-W 70' OF LOTS 1 THRU 6 BL K 30	14040	0	\$142,000
220014208120000	220014208120000	2221557	21218	01	R	0583	4	RR	3501	TARR SANDRA D	01204 LOLO ST	59802	1204 LOLO ST			MISSOULA	MT	59802-3550	PARK-LOTS 19 TO 24 BLK 30 PT V AC ALLEY	21240	0	\$230,000
220014208100000	220014208100000	99503	5664	01	C	0583	4	CU	3507	BAND IRENE L	02314 GILBERT AVE	59802	2314 GILBERT AVE			MISSOULA	MT	59802-3503	PARK-W1/2 OF LOTS 7 THRU 9 BLK 30 PT VAC ALLEY	5670	0	\$187,600
220014208090000	220014208090000	99705	10609	01	C	0583	4	CU	3507	BAND IRENE L	02310 GILBERT AVE	59802	2314 GILBERT AVE			MISSOULA	MT	59802-3503	PARK-W1/2 OF LOTS 7 THRU 9 BLK 30 PT V AC ALLEY	10620	0	\$188,000
220014208080000	220014208080000	99801	8251	01	R	0583	4	RU	3501	BARTH MARY E (TRUSTEE)	02320 GILBERT AVE	59802	2320 GILBERT AVE			MISSOULA	MT	59802-3503	PARK-SO 20' OF LOT 13, ALL OF 14 & 15 BLK 30 10' VAC	9200	0	\$157,600
220014208070000	220014208070000	99609	23667	01	C	0583	4	CU	3507	BRENNAN BETH A	02322 GILBERT AVE	59802	516 MOUNTAIN VIEW DR			MISSOULA	MT	59802-3134	LOTS 1 TO 3 THRU 12 & N 10' OF 13 BLK 30 OF PARK ADDITION	23280	0	\$197,900
220014208060000	220014208060000	1250905	15203	01	C	0583	4	CU	3507	MCCUNE CARLA J	02412 GILBERT AVE	59802	5655 PRIMROSE LN			MISSOULA	MT	59809-9747	PARK BLOCK 29 LOTS 14, 4A & 19A LOT 15A 14.526 SQ FT	15246	0	\$170,300
220014208050000	220014208050000	1796402	15104	01	R	0583	4	RU	3501	DUSTRUD KEITH	02336 GILBERT AVE	59802	2336 GILBERT AVE			MISSOULA	MT	59802-3503	PARK-LOTS 22 THRU 24 BLK 29 30' VAC ST ADJ & PT VAC	14160	0	\$159,100
220014208040000	220014208040000	1251109	11328	01	C	0583	4	CU	3507	MCCUNE CARLA J	02410 GILBERT AVE	59802	5655 PRIMROSE LN			MISSOULA	MT	59809-9747	PARK BLOCK 29 LOTS 14, 4A & 19A LOT 15A 14.526 SQ FT	10454	0	\$144,300
220014208030000	220014208030000	2246300	7552	01	R	0583	4	RU	3501	CHAPMAN MARK A & JUDITH F	02342 GILBERT AVE	59802	2420 GILBERT AVE			MISSOULA	MT	59802-3404	PARK-ALL OF LOTS 17 & 18 E 16' ALLEY ADJ BLK 29	7560	0	\$91,200
220014208020000	220014208020000	2054905	15209	01	R	0583	4	RU	3501	SHAFFER JAMES A & GALE M	02422 GILBERT AVE	59802	2422 GILBERT AVE			MISSOULA	MT	59802-3404	PARK-LOTS 7 & 8, FRAC OF 8 & 16 BLK 29 PT ALLEY & VA	13720	0	\$186,500
220014208010000	220014208010000	2054809	8991	01	R	0583	4	RU	3501	SHAFFER JAMES A & SUE ANN	02444 GILBERT AVE	59802	2444 GILBERT AVE			MISSOULA	MT	59802-3404	PARK-W 100.0' OF LOTS 13 TO 15 BLK 29	9072	0	\$171,100
220014207200000	220014207200000	88208	12946	01	R	0583	4	RU	3501	SMITH PATRICIA E	02533 E RATTLESNAKE DR	59802	2533 RATTLESNAKE DR			MISSOULA	MT	59802-3223	N22.350' OF LOT 17 & ALL OF 18 & 19 BLK 45 OF PARK ADDITION	10350	0	\$172,900
220014207180000	220014207180000	2280651	42278	01	R	0583	4	EP	3149	CLARK FORK SCHOOL INC	02525 E RATTLESNAKE DR	59802	2525 RATTLESNAKE DR			MISSOULA	MT	59802-3223	LOTS 13 TO 19 BLK 28 & LOTS 13 TO 16 & S7.650' OF PBLK	41463	0	\$321,509
220014207160000	220014207160000	5854258	9710	01	R	0583	4	RU	3501	MCGINLEY JEANNE M	02521 RATTLESNAKE DR	59802	2521 RATTLESNAKE DR			MISSOULA	MT	59802-3223	LOT 11A OF PARK ADDITION BLKS 28 & 45 AMENDED 14-13-	10020	0	\$112,500
220014207140000	220014207140000	697101	24273	01	R	0583	4	RU	3501	SCHUCK CATHERINE E	02523 RATTLESNAKE DR	59802	2523 RATTLESNAKE DR			MISSOULA	MT	59802-3223	LOT 10A OF PARK ADDITION OF LOTS 7 TO 12 BLKS 28 & 4	23958	0	\$178,600
220014207120000	220014207120000	5854245	14564	01	R	0583	4	RR	3501	COOPER ALAN H	02519 RATTLESNAKE DR	59802	2415 WOODLAND AVE			MISSOULA	MT	59802-3431	LOT 8A OF PARK ADDITION OF LOTS 7 TO 12 BLKS 28 & 48	14810	0	\$118,600
220014207100000	220014207100000	2315506	24274	01	C	0583	4	CU	3507	MACDONALD CRAIG	RATTLESNAKE DR	59802	1220 POWELL ST			MISSOULA	MT	59802-3418	LOTS 4 TO 6 BLK 45 & LOTS 4 THRU 6 BLK 28 & POR OF V	23634	0	\$87,943
220014207090000	220014207090000	2315400	12946	01	C	0583	4	CU	3507	MACDONALD CRAIG	02501 RATTLESNAKE DR	59802	1220 POWELL ST			MISSOULA	MT	59802-3418	LOTS 1 TO 3 BLK 45 PARK ADDITION & POR OF VAC ALLEY	12960	0	\$285,500
220014207080000	220014207080000	388403	10609	01	R	0583	4	RU	3501	MACDONALD CRAIG F	01220 POWELL ST	59802	1220 POWELL ST			MISSOULA	MT	59802-3418	LOTS 1 TO 3 BLK 28 OF PARK ADDITION & POR OF VAC AL	11340	0	\$149,300
220014207070000	220014207070000	2159406	10609	01	R	0583	4	RU	3501	SHINSATO HAROLD J	01204 POWELL ST	59802	PO BOX 66			STEVENSVILLE	MT	59870-0066	LOTS 36 THRU 38 BLK 28 OF PARK ADDITION 14-13-19	9900	0	\$122,200
220014207060000	220014207060000	1703207	4945	01	R	0583	4	RU	3501	SMITH WILLIAM R	02520 GILBERT AVE	59802	2520 GILBERT AVE			MISSOULA	MT	59802-3208	S2 OF LOT 34 & ALL OF LOT 35 BLK 28 PARK ADDITION 14-	4950	0	\$140,400
220014207050000	220014207050000	2466908	8241	01	R	0583	4	RU	3501	MCLINAY CORIN WILLIAMS	02530 GILBERT AVE	59802	2530 GILBERT AVE			MISSOULA	MT	59802-3208	LOTS 32 & 33 & N2 OF 34 BLK 28 OF PARK ADDITION 14-	8250	0	\$148,300
220014207040000	220014207040000	197202	9890	01	R	0583	4	RU	3501	YONCE BENJAMIN F & ERIN E	02540 GILBERT AVE	59802	2540 GILBERT AVE			MISSOULA	MT	59802-3208	LOTS 29 TO 31 BLK 28 OF PARK ADDITION 14-13-19	9900	0	\$162,400
220014207030000	220014207030000	1393659	6593	01	R	0583	4	RU	3501	RANDALL STEVEN L & DEBRA A	02550 GILBERT AVE	59802	12366 CAMBRIA DR			YUCAIPA	CA	92399-1970	LOTS 27 & 28 IN BLK 28 OF PARK ADDITION 14-13-19	8600	0	\$167,800
220014207020000	220014207020000	2071409	6593	01	R	0583	4	RU	3501	SHOTLUFF MARGARET R	02526 GILBERT AVE	59802	2562 GILBERT AVE			MISSOULA	MT	59802-3208	LOTS 25 & 26 BLK 28 OF PARK ADDITION & VAC ALLEY ADJ	7560	0	\$140,900
220014207010000	220014207010000	1973251	20802	01	R	0583	4	RU	3501	RUSSELL JOHN E & CAROL L	01203 DICKINSON ST	59802	1203 DICKINSON ST			MISSOULA	MT	59802-3209	LOTS 20 TO 24 BLK 28 OF PARK ADDITION & VAC ALLEY ADJ	19908	0	\$185,200
220014206800000	220014206800000	66300	11645	01	R	0583	4	RU	3501	MAX & DOLORES ANDERSEN FAMILY	01204 PONDEROSA DR	59802	13003 SAN MARCOS PL			CHINO	CA	91710-3180	PINE VIEW HOMES #1-LOT 8 BLK 1	11780	0	\$191,600
220014206700000	220014206700000	1769509	11779	01	R	0583	4	RU	3501	PETERSEN DUANE E & SHIRLEY KAY	01208 PONDEROSA DR	59802	1208 PONDEROSA DR			MISSOULA	MT	59802-3239	PINE VIEW HOMES #1-LOT 7 BLK 1	11780	0	\$169,100
220014206600000	220014206600000	243508	11779	01	R	0583	4	RU	3501	BOYLE WILLIAM W & PATRICIA A	01212 PONDEROSA DR	59802	1212 PONDEROSA DR			MISSOULA	MT	59802-3239	PINE VIEW HOMES #1-LOT 6 BLK 1	11780	0	\$230,900
220014206500000	220014206500000	2130206	11645	01	R	0583	4	RU	3501	HEARE ALLEN W & EVA J	01216 PONDEROSA DR	59802	1216 PONDEROSA DR			MISSOULA	MT	59802-3239	PINE VIEW HOMES #1-LOT 5 BLK 1	11780	0	\$173,200
220014206400000	220014206400000	1196108	11645	01	R	0583	4	RU	3501	FANELLI DINO & CRISTINE	01215 PINEVIEW DR	59802	1215 PINEVIEW DR			MISSOULA	MT	59802-3240	PINE VIEW HOMES #1-LOT 4 BLK 1	11780	0	\$150,100
220014206300000	220014206300000	2006308	11779	01	R	0583	4	RU	3501	SCHATZ PATSY L & ROBERT A	01211 PINEVIEW DR	59802	1211 PINEVIEW DR			MISSOULA	MT	59802-3240	PINE VIEW HOMES #1-LOT 3 BLK 1	11780	0	\$163,900
220014206200000	220014206200000	1170808	11779	01	R	0583	4	RU	3501	SOUEIDAN SAMIR M	01207 PINEVIEW DR	59802	1207 PINEVIEW DR			MISSOULA	MT	59802-3240	PINE VIEW HOMES #1-LOT 2 BLK 1	11780	0	\$164,800
220014206100000	220014206100000	304703	11645	01	R	0583	4	RU	3501	KERSCHER GEORGE W & GAIL A	01203 PINEVIEW DR	59802	1203 PINEVIEW DR			MISSOULA	MT	59802-3240	PINEVIEW HOMES #1-LOT 1 BLK 1	11780	0	\$165,700
220014205980000	220014205980000	1178400	11645	01	R	0583	4	RU	3501	KUENZEL ROBERT B & BETTIE J	02706 GILBERT AVE	59802	2706 GILBERT AVE			MISSOULA	MT	59802-3204	PINE VIEW HOMES #1-LOT 8 BLK 2	11780	0	\$180,500
220014205970000	220014205970000	408066	11779	01	R	0583	4	RU	3501	HUDDLESTON CAROLYN & DAVID M	01208 YELLOWPINE ST	59802	1208 YELLOWPINE ST			MISSOULA	MT	59802-3256	PINE VIEW HOMES #1-LOT 7 BLK 2	11780	0	\$161,900
220014205960000	220014205960000	2335804	11779	01	R	0583	4	RU	3501	MURPHY STEPHEN R	01212 YELLOWPINE ST	59802	1212 YELLOW PINE ST			MISSOULA	MT	59802-3256	PINE VIEW HOMES #1-LOT 6 BLK 2	11780	0	\$191,000
220014205950000	220014205950000	1089906	11645	01	R	0583	4	RR	3501	BROOKS DAVID	01216 YELLOWPINE ST	59802	1216 YELLOW PINE ST			MISSOULA	MT	59802-3256	PINE VIEW HOMES #1-LOT 5 BLK 2	11780	0	\$160,400
220014205940000	220014205940000	194655	11645	01	R	0583	4	RU	3501	GIGSTAD THOMAS R & LOIS A	01215 PONDEROSA DR	59802	1215 PONDEROSA DR			MISSOULA	MT	59802-3238	PINE VIEW HOMES #1-LOT 4 BLK 2	11780	0	\$172,400
220014205930000	220014205930000	86502	11779	01	R	0583	4	RU	3501	MCMANARA KATHLEEN C	01211 PONDEROSA DR	59802	1211 PONDEROSA DR			MISSOULA	MT	59802-3238	LOT 3 IN BLK 2 OF PINE VIEW HOMES ADDITION 14-13-19	11780	0	\$168,500
220014205920000	220014205920000	2382601	11779	01	R	0583	4	RU	3501	WEIDENFELLER FAMILY TRUST	01207 PONDEROSA DR	59802	1207 PONDEROSA DR			MISSOULA	MT	59802-3238	PINE VIEW HOMES #1-LOT 2 BLK 2	11780	0	\$191,300
220014205910000	220014205910000	1453701	11645	01	R	0583	4	RU	3501	DANIELSON J BRUCE	02716 GILBERT AVE	59802	2716 GILBERT AVE			MISSOULA	MT	59802-3204	PINE VIEW HOMES #1-LOT 1 BLK 2	11780	0	\$149,200
220014204980000	220014204980000	1873109	11169	01	R	0583	4	RU	3501	KEARNS JOHN A	02606 GILBERT AVE	59802	2606 GILBERT AVE			MISSOULA	MT	59802-3206	PINE VIEW HOMES #1-LOT 8 BLK 3	117		

Exhibit B

MAP OF SID NO. 541 AREA AND BOUNDARY AND LEGAL DESCRIPTION OF PARK

The map below shows the proposed boundaries of the Pine View Park Special Improvement District.



Legal Description of Pine View Park is as follows: All of the 4.4671 acre Pine View Park parcel described and shown in the official plat of Pine View Homes Addition, filed on August 5, 1960, in Book 6 of Plats, Page 11 of the Missoula County Clerk and Recorder's records and located in Section 14, Township 13 North, Range 19 West, P.M.M.

Exhibit C

Description of Improvements and Budget

Estimated cost of Improvements to Pine View Park

Construction, Acquisition and Installation of Improvements	\$561,500
Architectural and Engineering	80,000
Financing and Bond Costs	<u>108,500*</u>
TOTAL COSTS	\$750,000

*5% deposit to revolving fund = \$37,500; City Administration of 6% of construction = \$36,000; Bond Counsel = \$8,500 (estimate); Financial advisor = \$10,000 (estimate); Underwriting discount of 1.3% = \$9,750; Rating Agency fee = \$4,000; Official Statement = \$2,000; Registrar = \$750.

The Estimated Costs of the Various Improvements are as follows:

Estimates

Restroom (port-a-pot shelter). A 3 season restroom with winter port-a-pot shelter is preferred if funds are available - estimate \$140,000.	\$45,000
Utility connections	\$ 20,000
Playgrounds and playing fields improvements	\$ 90,000
3 Tennis courts resurfaced	\$130,000
Basketball court resurfaced	\$ 30,000
Demolition, new storage sheds, new picnic shelter, associated landscaping and turf development	\$136,500
New lighting, walkways, sprinkler system upgrades, rink hose reel, water fountain, sundries	\$110,000
Sub total:	\$561,500

If the costs of the Improvements equal or exceed the estimates, there will be inadequate funds to complete and acquire the Improvements. A minimum of \$561,500 will be available to finalize the Improvements in the following order of priority:

1. Restrooms (year round access; port-a-pot shelter system)
2. Playground equipment
3. Irrigation/walkway renovations
4. 2 Tennis Court replacements
5. Ice rink improvements
6. Storage facility
7. Basketball/Multi-Sport Court replacement
8. Playing field improvements
9. Picnic Shelter replacement
10. Additional Tennis Court
11. Lighting (evening use)

Exhibit D

NOTICE OF PASSAGE OF A RESOLUTION RELATING TO SPECIAL IMPROVEMENT DISTRICT NO. 541 FOR PINE VIEW PARK; DECLARING IT TO BE THE INTENTION OF THE CITY COUNCIL TO CREATE THE DISTRICT FOR THE PURPOSE OF UNDERTAKING CERTAIN LOCAL IMPROVEMENTS AND FINANCING THE COSTS THEREOF AND INCIDENTAL THERETO THROUGH THE ISSUANCE OF SPECIAL IMPROVEMENT DISTRICT BONDS SECURED BY THE CITY'S SPECIAL IMPROVEMENT DISTRICT REVOLVING FUND

CITY OF MISSOULA, MONTANA

NOTICE IS HEREBY GIVEN that on October 23, 2006, the City Council of the City of Missoula, Montana (the "City"), adopted a Resolution of Intention relating to Special Improvement District No. 541 for Pine View Park (the "District") for the purpose of financing the costs of certain local improvements (the "Improvements") and paying costs incidental thereto, including costs associated with the sale and the security of special improvement district bonds of the City drawn on the District (the "Bonds"), the creation and administration of the District, and the funding of a deposit to the City's Special Improvement District Revolving Fund (the "Revolving Fund").

A complete copy of the Resolution of Intention (the "Resolution") is on file with the Clerk of the Council and available for inspection. The Resolution more specifically describes the nature of the Improvements, the boundaries and the area included in the District, the location of the Improvements and other matters pertaining thereto and further particulars.

The Pine View Park Association has identified the following improvements in order of priority: restrooms, playground equipment, irrigation/walkway renovations, two tennis court replacements, ice rink improvements, storage facility, basketball/multi-sport court replacement, playing field improvements, picnic shelter replacement, additional tennis court, and lighting (evening use), to be situated on or immediately adjacent to the Park as more particularly shown on Exhibit C. The total estimated costs of those improvements, including architect and engineering costs, are estimated to be \$641,500. In the event the actual costs of the identified Improvements exceeds the amount of money available therefore the City will fund the Improvements in order of the established priority.

The City would issue the Bonds in an aggregate principal amount not to exceed \$750,000.00 in order to finance the costs of the Improvements, incidental costs, and costs associated. Principal of and interest on the Bonds will be paid from special assessments levied against the property in the District in the aggregate principal amount of up to \$750,000.00 and such payment will be secured by Revolving Fund. **Subject to the limitations of Montana Code Annotated, Section 7-12-4222, the general fund of the City may be used to provide loans to the Revolving Fund or a general tax levy may be imposed on all taxable property in the City to meet the financial requirements of the Revolving Fund.**

All properties within the District are to be assessed for a portion of the costs of the Improvements and incidental costs. The total estimated cost of the Improvements, including incidental costs, to be paid for by the Bonds is up to \$750,000 and shall be assessed against each lot, tract or parcel of land in the District in an equal amount for that part of the costs of the Improvements, including incidental costs, that each lot, tract or parcel bears to the total number of lots, tracts or parcels of land in the District. The costs of the Improvements and incidental costs to be assessed per lot, tract, or parcel are estimated to be \$429.00.

On Monday, November 27, 2006, at 7:00 p.m., in the City Council Chambers, 140 W. Pine Street, in Missoula, Montana, the City Council will conduct a public hearing and pass upon all written protests against the creation of the District or the making of Improvements that may be filed in the period hereinafter described.

Written protests against the creation of the District and the making of the Improvements may be filed by an owner or owners of real property within the proposed District whose property is liable to be assessed for the Improvements. **Such protests must be delivered to the Clerk of the Council at 435 Ryman Street, in Missoula, Montana, not later than 5:00 p.m., M.T., on November 27, 2006. Such protests must be in writing, identify the property in the District owned by the protestor, and be signed by all owners of the property.** The sufficiency or insufficiency of protests, if any, shall be based on the number of properties owned by protestors in the District as compared to the total number of all properties in the District, as more particularly described in the Resolution.

Further information regarding the proposed District or the Bonds or other matters in respect thereof may be obtained from the Missoula Clerk of the Council at 435 Ryman Street, in Missoula, Montana, or by telephone at (406) 258-4705.

Dated: October 23, 2006.

BY ORDER OF THE CITY COUNCIL
OF THE CITY OF MISSOULA, MONTANA

/s/ Marty Rehbein
City Clerk

(Publication Dates: November 5, 2006 and November 12, 2006)