



Submittal Stamp Sheet

Project: Powers SNF

H+L Architecture

Phipps' Job #: 13J2022

1755 Blake St.

Submittal #: 084229-01 - Sliding Automatic Entrances -
Shop Drawings and Product Data

Denver, CO 80202

<p>Gerald H. Phipps, Inc.:</p> <p style="text-align: center;">SUBMITTED <i>GH Phipps</i> <i>Construction Companies</i></p> <p>GH Phipps has reviewed, approved, and hereby submits the attached in accordance with the contract documents.</p> <p>Note to Subcontractor/Material Supplier: Subcontractor/Material Supplier remains responsible for the confirmation and correlation of dimensions at the jobsite; fabrication processes and construction techniques; coordination of the work with the work of other trades; and satisfactory performance of the work.</p>	<p>Architect:</p>
<p>Engineer:</p>	<p>Other:</p>

NOTES:

Signed: _____
Nate Casten



Product Submittals

Powers Skilled Nursing Facility

H+L Architecture

GH Phipps Construction

Automatic Sliders

Note: GC must guarantee rough opening sizes due to lead times.

Estimated material Lead Times: 7-8 Weeks

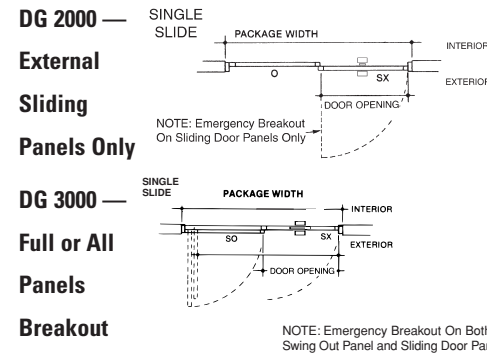
Date: 2/18/2014

Dura-Glide® 2000/3000 Series

FEATURES:

- All models available in bi-part (double sliding) or single slide configuration.

BREAKOUT: (System is disabled when panels breakout)



- Fiberglass Reinforced Toothed Timing Belt
- Maximum Panel Weight - Up to 400lb (with heavy duty option)
- Door Panels : Glass, Aluminum, Wood, Metal or Custom
- Speed Range: (based on size & weight of the door)
 - Opening Speeds — .5' - 2.5' per sec.
 - Closing Speeds — .5' - 1.5' per sec.
- Clear Door Opening Typical Width: 3' - 6'

Door packages are custom manufactured to fit your job requirements. For sizes greater or smaller than typical, contact your authorized Stanley Access Technologies Sales Representative.

HEADER SIZE: 8" (203mm) high x 6" (152mm) deep
TYPICAL HEIGHT: 7'-8" (2.3m), clear door opening of 6'-11" (2.1m)
TYPICAL WIDTH: Single Slide: 7' to 9' (2.1m to 2.7m), clear door opening width of 35-1/2" to 47-1/2" (901mm to 1206mm). Bi-Part: 10' to 14' (3m to 4.2m), clear door opening width of 48" to 72" (1219mm to 1828mm)
TYPICAL DOOR PANEL WEIGHT: up to 220 pounds each (100kg)
DRIVE SYSTEM: 1/4 HP DC motor, gear drive, toothed belt
CONTROLLER: microprocessor based, safety logic, watchdog LED
SENSORS: 2 for motion (switchable between uni-directional and bi-directional) and 1 Stan-Guard® and doorway holding beam for safety. Stan-Vision™ Digital Video Cameras Optional. Mats, wallplates, radio control optional.
BREAKOUT: SX panel on the 2000, SX and SO panels on the 3000
POWER REQUIRED: 120 VAC, 5 amps min.
CODE COMPLIANCE: UL, cUL, ANSI A156.10, UBC, BOCA, ICBO, NFPA 101

MICROPROCESSOR CONTROLLER:

- Adjustable Opening & Closing Speed
- Adjustable Distance & Speed of Breaking
- Adjustable Reduced Opening
- Adjustable Time Delay
- Auto Reverse on Obstruction
- Slow Speed Search for Obstruction

DRIVE SYSTEM:

- 1/4 HP DC Gear Driven Motor
- Twin 1/4 HP DC Gear Driven Motors (Optional)

Service & Installation

Rely on the Stanley expertise and experience gained from thousands and thousands of installations worldwide.

Stanley Access Technologies designs, manufactures and markets automatic door systems worldwide.

For more than 70 years, we have set the global standard for smooth, quiet operation, user safety, design flexibility, quality, reliability and ease of installation. Our service force is North America's largest and most comprehensive network devoted to the installation and maintenance of automatic door systems. This network combines the global resources of Stanley with the unmatched customer responsiveness of

local organizations to ensure every door we sell and install provides our customers with worry-free operation.

For Service, Call Stanley Toll Free: 1-800-7-ACCESS (1-800-722-2377)

Stanley Access Technologies, LLC
 Stanley Security Solutions Product Group

Customer Care: 1-800-7-ACCESS (1-800-722-2377)
 www.stanleyaccesstechnologies.com



Security Solutions



Stanley Automatic Door Systems - the safest, most cost effective solutions available today.

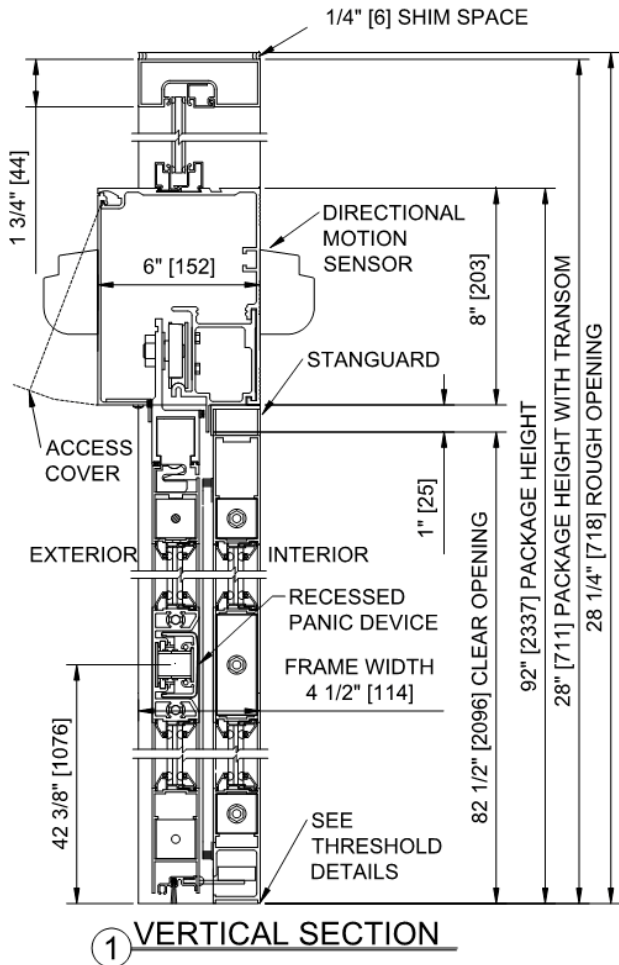


STANLEY

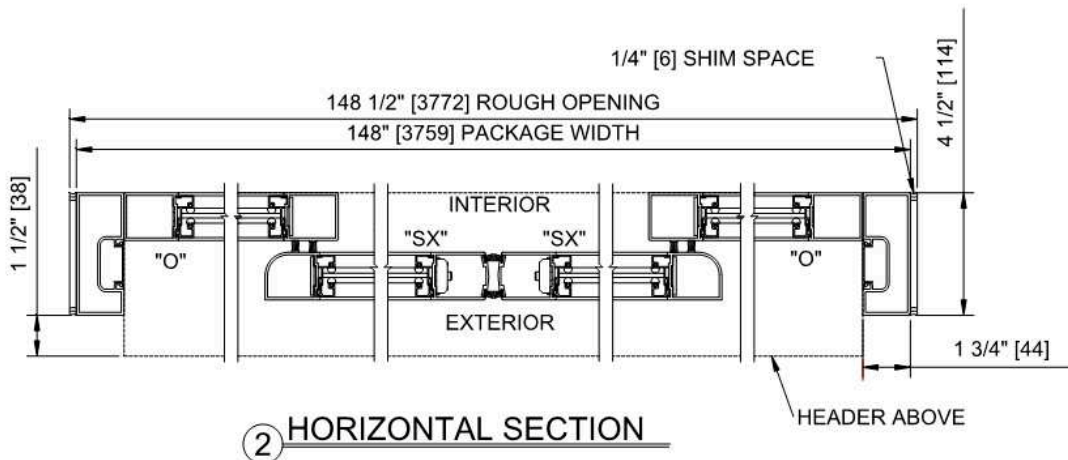
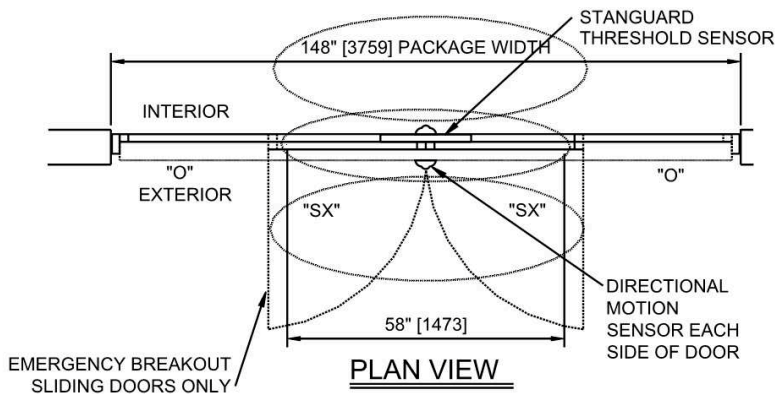
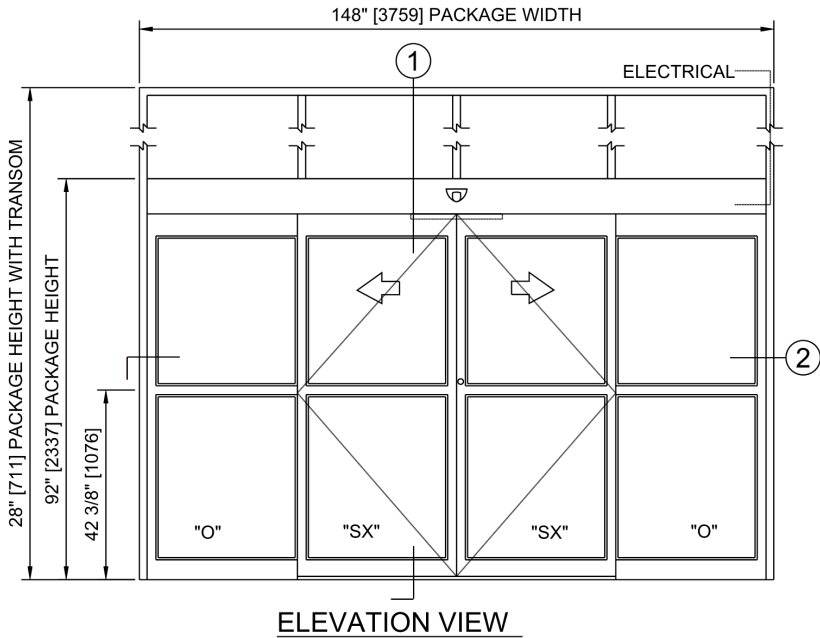
Access Technologies

Job Name : Powers Skilled Nursing Facility 9208 Grand Cordera Pkwy
 Location : COLORADO SPRINGS, COLORADO
 Door Location : ext. dr. #100-A

Job# : 25140
 Product Qty : 1
 Product : Dura-Glide 2000 Bi-Parting Sliding Door
 Date: Dec 17 2013



1 VERTICAL SECTION



STANLEY

Job Name : Powers Skilled Nursing Facility 9208 Grand Cordera Pkwy
Location : COLORADO SPRINGS, COLORADO
Door Location : ext. dr. #100-A

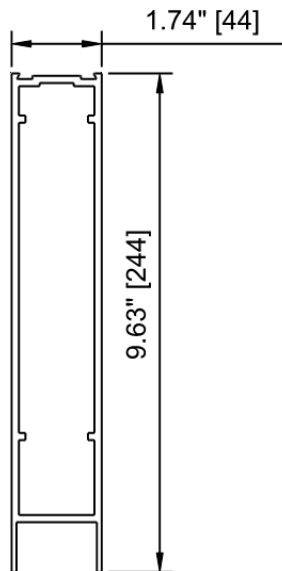
Job# : 25140

Date: Dec 17 2013

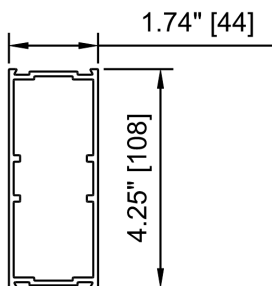
Product Qty : 1

Product : Dura-Glide 2000 Bi-Parting Sliding Door

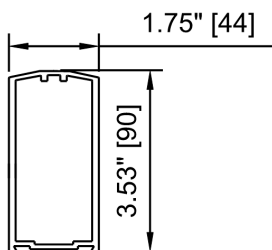
Access Technologies



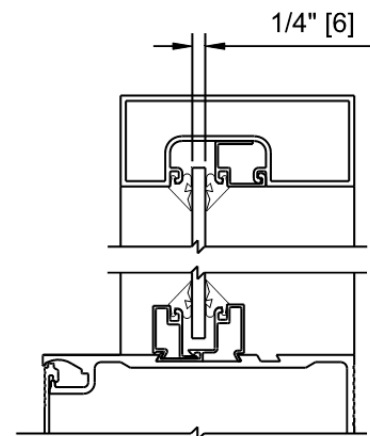
BOTTOM RAIL, 10"
6063-T6



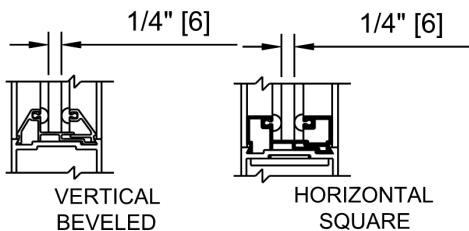
MUNTIN BAR, 4"
6063-T6



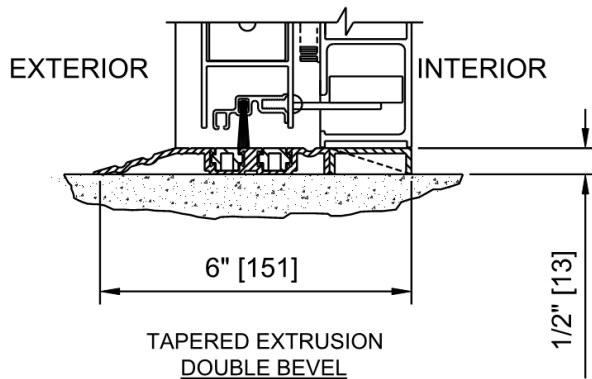
STILE, MEDIUM
6063-T6



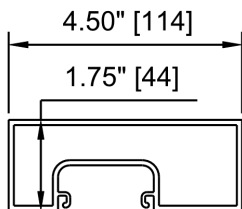
**TRANSOM
VERTICAL SECTION
1/4" GLASS**



**PANEL GLAZING
SECTIONS
1/4" GLASS**



**THRESHOLD-TAPERED EXTRUSION
4 1/2" FRAME
(DOUBLE BEVEL THROUGHOUT DOOR OPENING)**



JAMB, 4 1/2"
6063-T6

STANLEY

Job Name : Powers Skilled Nursing Facility 9208 Grand Cordera Pkwy
Location : COLORADO SPRINGS, COLORADO
Door Location : ext. dr. #100-A

Job# : 25140**Date:** Dec 17 2013**Product Qty :** 1**Product :** Dura-Glide 2000 Bi-Parting Sliding Door

Access Technologies

Door Details

Package Width	Masonry/Rough Opening Width	Clear Door Opening Width	Emergency Breakout
148.0000"	148.5000"	57.9680"	68.2180"

Options	Inclusions/Exclusions
<p><u>Finish</u> Door Package Color Special Finish, Med Bronze (Anodized)</p> <p><u>Locking / Access Control</u> Access Control Mount Recessed Mount Fail Safe/Fail Secure Fail Secure</p> <p><u>Options and Accessories</u> Jamb Substitution No Substitution Threshold Option Double Bevel 6" (Continuous) Hardware Options Exit Indicator Bottom Ball Detent Switch and Control Options Door Position Switch Switch Type Keyswitch - 6 Position</p> <p><u>Glass Specifications</u> Transom Glass Thickness 0.2500" SX Glass Thickness 0.2500" O Glass Thickness 0.2500"</p>	<p><u>Inclusions</u> Door package installation.</p> <p><u>Exclusions</u> Recess prep & grout for track or threshold. Painting, patching & flooring work. Preparation of rough opening. 120 volts AC to inside auto door header. Back boxes & low voltage wiring from any control to inside auto door header. Glass & Glazing. Caulking. After hours premium labor. Perimeter structural support / wood blocking for sliding door packages.</p> <p><u>Exclusion Note</u> Bonding, permits, engineered drawings.</p>

Shop Drawing / Submittal Review

Date: _____

 No Exceptions Taken Furnish with Changes Noted Review and Resubmit Rejected

SUBMITTAL WAS REVIEWED FOR GENERAL CONFORMANCE TO THE CONTRACT DOCUMENTS. THE GENERAL CONTRACTOR IS RESPONSIBLE FOR CONFIRMING AND CORRELATING DIMENSIONS AT JOBSITE FOR TOLERANCE, CLEARANCE, QUANTITIES, FABRICATION, TECHNIQUES OF CONSTRUCTION, COORDINATION OF THIS WORK WITH THE WORK OF OTHER TRADES, AND FULL COMPLIANCE WITH THE CONTRACT DOCUMENTS.

By: _____

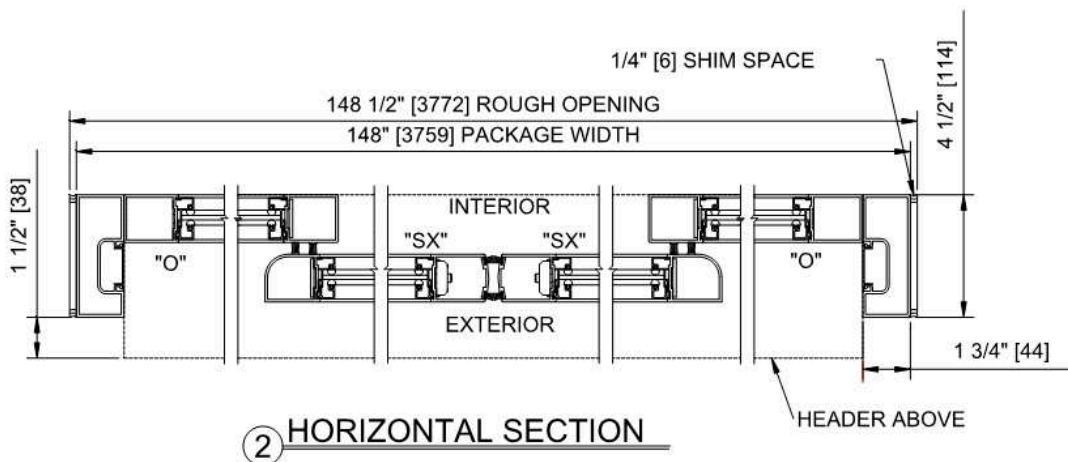
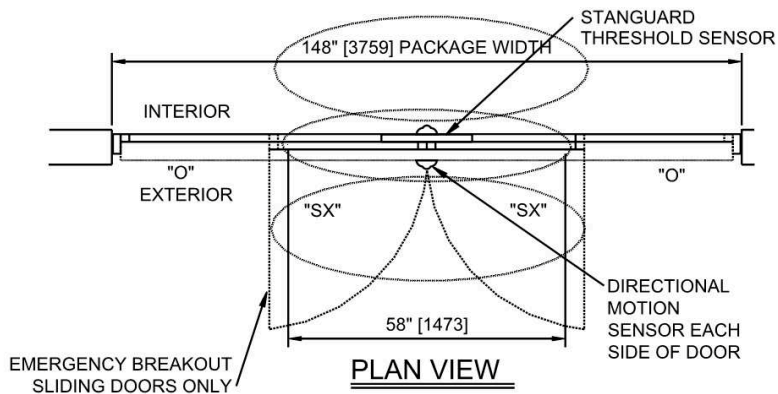
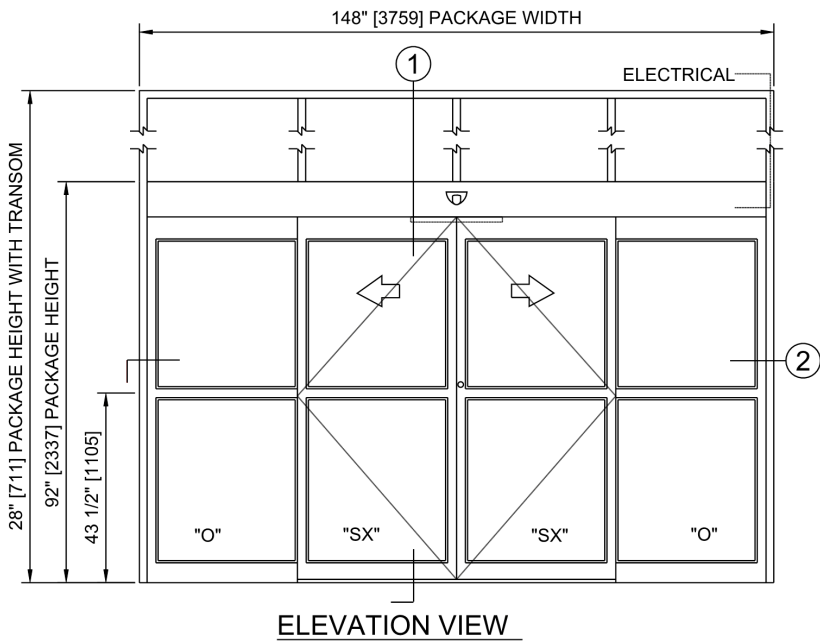
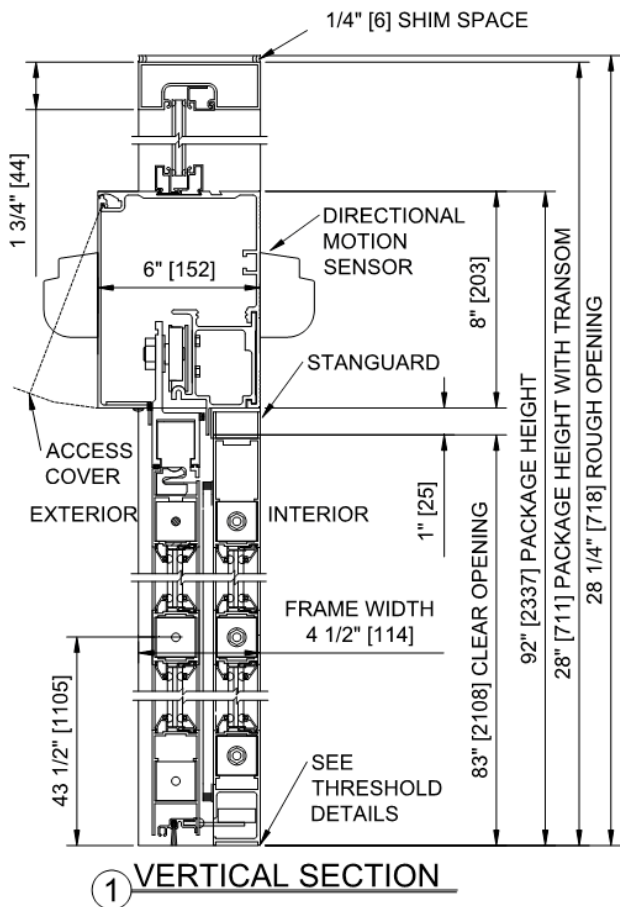
Company: _____

STANLEY

Access Technologies

Job Name : Powers Skilled Nursing Facility 9208 Grand Cordera Pkwy
 Location : COLORADO SPRINGS, COLORADO
 Door Location : Int. Dr. #100-B

Job# : 25140 Date: Dec 17 2013
 Product Qty : 1
 Product : Dura-Glide 2000 Bi-Parting Sliding Door

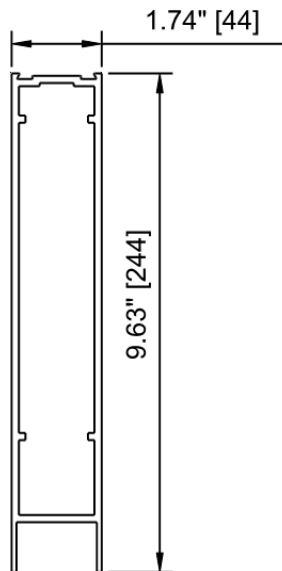


STANLEY

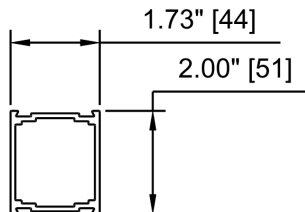
Job Name : Powers Skilled Nursing Facility 9208 Grand Cordera Pkwy
Location : COLORADO SPRINGS, COLORADO
Door Location : Int. Dr. #100-B

Job# : 25140
Product Qty : 1
Product : Dura-Glide 2000 Bi-Parting Sliding Door
Date: Dec 17 2013

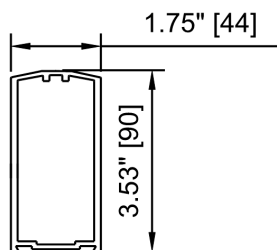
Access Technologies



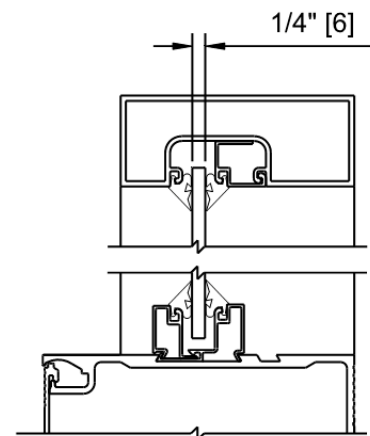
BOTTOM RAIL, 10"
6063-T6



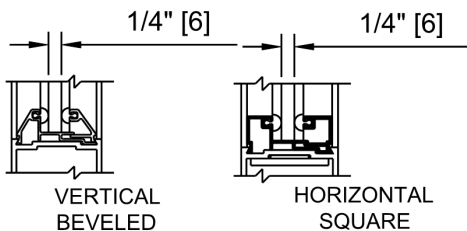
MUNTIN BAR, 2"
6063-T6



STILE, MEDIUM
6063-T6

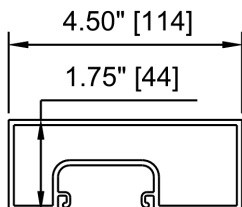


**TRANSOM
VERTICAL SECTION
1/4" GLASS**



**PANEL GLAZING
SECTIONS
1/4" GLASS**

THRESHOLD section not selected in the package



JAMB, 4 1/2"
6063-T6

STANLEY

Job Name : Powers Skilled Nursing Facility 9208 Grand Cordera Pkwy
Location : COLORADO SPRINGS, COLORADO
Door Location : Int. Dr. #100-B

Job# : 25140**Date:** Dec 17 2013**Product Qty :** 1**Product :** Dura-Glide 2000 Bi-Parting Sliding Door

Access Technologies

Door Details

Package Width	Masonry/Rough Opening Width	Clear Door Opening Width	Emergency Breakout
148.0000"	148.5000"	57.9680"	68.2180"

Options	Inclusions/Exclusions
<p>Finish</p> <p>Door Package Color Special Finish, Med Bronze (Anodized)</p> <p>Locking / Access Control</p> <p>Cylinder Options Dummy Cylinder Lock Configuration No Lock/Cylinder/Thumbturn Lock Config Options Two Point Lock</p> <p>Options and Accessories</p> <p>Jamb Substitution No Substitution Hardware Options Exit Indicator Bottom Ball Detent Switch and Control Options Door Position Switch Switch Type Rotary Switch - 6 Position</p> <p>Glass Specifications</p> <p>Transom Glass Thickness 0.2500" SX Glass Thickness 0.2500" O Glass Thickness 0.2500"</p>	<p>Inclusions</p> <p>Door package installation.</p> <p>Exclusions</p> <p>Recess prep & grout for track or threshold. Painting, patching & flooring work. Preparation of rough opening. 120 volts AC to inside auto door header. Back boxes & low voltage wiring from any control to inside auto door header. Glass & Glazing. Caulking. After hours premium labor. Perimeter structural support / wood blocking for sliding door packages.</p> <p>Exclusion Note</p> <p>Bonding, permits, engineered drawings.</p>

Shop Drawing / Submittal Review

Date: _____

 No Exceptions Taken Furnish with Changes Noted Review and Resubmit Rejected

SUBMITTAL WAS REVIEWED FOR GENERAL CONFORMANCE TO THE CONTRACT DOCUMENTS. THE GENERAL CONTRACTOR IS RESPONSIBLE FOR CONFIRMING AND CORRELATING DIMENSIONS AT JOBSITE FOR TOLERANCE, CLEARANCE, QUANTITIES, FABRICATION, TECHNIQUES OF CONSTRUCTION, COORDINATION OF THIS WORK WITH THE WORK OF OTHER TRADES, AND FULL COMPLIANCE WITH THE CONTRACT DOCUMENTS.

By: _____

Company: _____