

## Unit 2 Lesson 1

## Economics in the Early Years

### Words to Know

adjacent	timber	tannery
export	brig	chandler



The earliest settlers had to work very hard to survive. People spent the winters tending livestock. They prepared timber for export. They trapped animals. In the spring, the settlers collected oil from fish to export to England. Gypsum from the Strait of Canso area was sent to the southern United States.

During this time, there were people from Guernsey interested in the fisheries. Guernsey was one of the British Channel Islands off the coast of France. Nicholas Paint was a native of Guernsey. He planned to be a merchant. He asked for land and the adjacent water lots in Ship Harbour for Thoume, Moullin and Company Fisheries. They erected both fishing and shipbuilding establishments.

In the early 1800's, Thomas Embree Jr. arrived from Chester, Nova Scotia. The census lists him as a shoemaker. He established a tannery on Embree's Island. His brothers, Samuel, Adolphus and Charles, followed him to this area.

Thomas had a boat building shop on Embree's Island. He built the brig **Rewano**, a 121-ton vessel, for Nicholas Paint. Samuel was also involved in this business. He built the brig **Sam Slick**.

These early boat building and fishing establishments attracted more workers and businesses to the area. In 1834, Peter Paint Sr. opened his Port Hawkesbury business, Peter Paint and Sons. They were general merchants. They also served as ship chandlers.

## Unit 2 Lesson 1

## Economics in the Early Years

### Understanding the story:

Circle the letter beside the correct answer.

1. In the spring, the settlers
  - a. tended livestock
  - b. trapped animals
  - c. collected oil from fish
  
2. There were people interested in the fisheries here who came from
  - a. Chester
  - b. United States
  - c. Guernsey
  
3. Whose company operated as ship chandlers?
  - a. Nicholas Paint
  - b. Thomas Embree Jr.
  - c. Peter Paint Sr

### Vocabulary:

Using the six vocabulary words from the story, write the correct word in the blank next to the meaning.

1. \_\_\_\_\_ to send goods abroad
2. \_\_\_\_\_ a dealer in groceries and supplies
3. \_\_\_\_\_ wood used in building
4. \_\_\_\_\_ next to: near by
5. \_\_\_\_\_ a place where animal hides are made into leather
6. \_\_\_\_\_ a square-rigged ship with two masts

## Unit 2 Lesson 1

## Economics in the Early Years

### Plurals

- When a word stands for more than one of something, it is called a plural word. Most words become plural by adding **s**.  
Examples: cat → cats dog → dogs
- For words that end in **ch, sh, x, z,** or **ss,** you add **es**.  
Examples: class → classes box → boxes  
push → pushes
- With words that end in **y** and have a consonant in front of the **y,** you change the **y** to **i** and add **es**.  
Examples: lady → ladies city → cities
- If the **y** has a vowel in front of it, you Just add **s**.  
Examples: boy → boys key → keys
- For words that end in **f** or **fe,** you change the **f** to **v** and add **es**.  
Examples: wife → wives knife → knives
- There are exceptions to these rules.  
Examples: man → men mouse → mice

### Plurals

Make the following words plural by adding the proper ending:

- |                   |                  |
|-------------------|------------------|
| 1. settler _____  | 9. tannery _____ |
| 2. winter _____   | 10. valley _____ |
| 3. animal _____   | 11. brig _____   |
| 4. fishery _____  | 12. mass _____   |
| 5. business _____ | 13. supply _____ |
| 6. shoe _____     | 14. man _____    |
| 7. census _____   | 15. family _____ |
| 8. life _____     | 16. ferry _____  |

### To Know More:

1. Research other families who built ships in Port Hawkesbury.

Name:

Date:

Class: CLI Adult Learning

## Word Search

Find the hidden words.



t	a	n	n	e	r	y	t	i	v
l	b	r	i	g	g	s	i	s	b
s	t	r	a	i	t	q	m	l	p
t	v	a	l	l	e	y	b	a	z
q	a	a	d	j	a	c	e	n	t
z	h	a	r	b	o	u	r	d	m
d	a	x	c	e	x	p	o	r	t
c	h	a	n	d	l	e	r	v	n

adjacent	export	harbour	island
timber	brig	strait	
tannery	chandler	valley	

Answer Key      Date:

Class: CLI Adult Learning

## Word Search

Find the hidden words.



t	a	n	n	e	r	y	t	i	v
l	b	r	i	g	g	s	i	s	b
s	t	r	a	i	t	q	m	l	p
t	v	a	l	l	e	y	b	a	z
q	a	a	d	j	a	e	e	n	t
z	h	a	r	b	o	u	r	d	m
d	a	x	c	e	x	p	o	r	t
c	h	a	n	d	l	e	r	v	n

adjacent	export	harbour	island
timber	brig	strait	
tannery	chandler	valley	

Name:

Date:

Class: CLI Adult Learning

## Word Search

Find the hidden words.

k	t	w	k	s	c	e	n	s	u	s	b	i	c	s	t	j	p
b	l	f	v	g	u	o	c	x	m	e	t	e	r	t	a	m	e
z	b	z	y	f	e	r	c	m	c	b	r	i	g	r	n	f	x
a	f	h	z	b	i	s	v	c	a	o	v	b	j	a	n	e	p
a	d	j	a	c	e	n	t	e	u	l	n	h	n	i	e	m	o
y	s	m	f	n	u	s	k	a	y	p	w	f	c	t	r	g	r
t	r	e	e	u	j	c	q	o	b	e	a	t	u	f	y	r	t
y	v	x	t	r	m	k	h	u	j	l	d	t	i	s	w	b	u
z	z	d	l	t	c	d	i	a	a	t	i	e	i	m	i	x	s
k	g	o	e	h	l	h	n	g	n	t	a	s	r	o	b	n	t
q	t	a	q	n	u	e	a	g	y	d	t	k	h	q	n	e	g
d	b	n	b	m	s	q	r	n	e	c	l	e	j	e	q	q	r
y	j	q	p	z	r	e	d	s	t	s	l	e	r	v	d	t	z
h	a	r	b	o	u	r	o	c	o	o	p	e	r	s	m	n	a

adjacent	chandler	merchant	confusing
export	surveyed	established	squatters
timber	census	harbour	strait
tannery	cooper	dense	meter
brig	occupation	settlers	

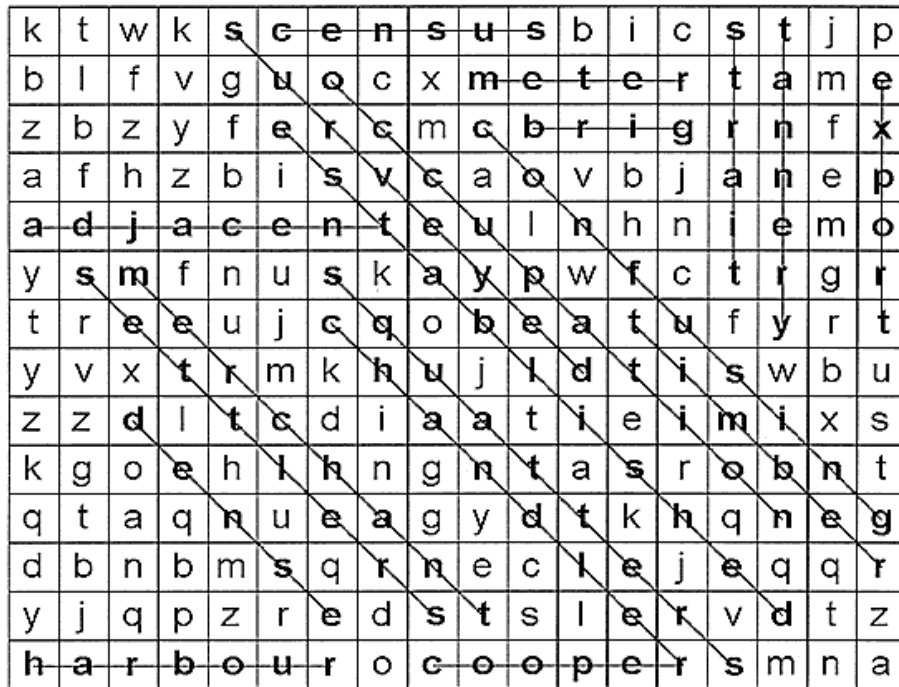
Answer Key

Date:

Class: CLI Adult Learning

## Word Search

Find the hidden words.



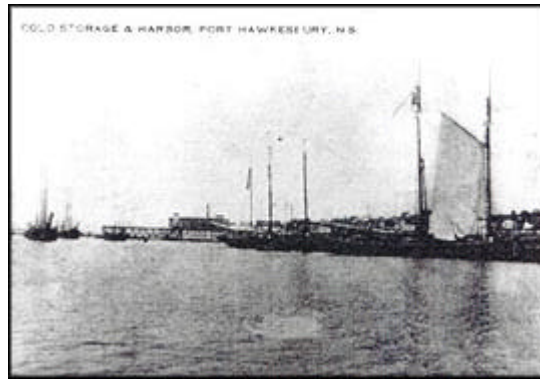
adjacent	chandler	merchant	confusing
export	surveyed	established	squatters
timber	census	harbour	strait
tannery	cooper	dense	meter
brig	occupation	settlers	

## Unit 2 Lesson 2

## Economics in the Early Years

### Words to Know

population	government	financial
schooners	Confederation	yachts
commercial	pleasure	bustling



The population of the Ship Harbour area continued to grow as jobs were created. It was difficult to deal with government offices which were located in Sydney, so local courts were established. This created more government jobs to add to those of customs collectors, justices of the peace, and land surveyors.

One well-known citizen who held a variety of government positions was Peter John Brouard. He was a native of Guernsey. He was a shipbuilder by trade. He built the **General Brock** and he built the **James**, which was owned by him and Thome, Moullin and Co. A beautiful painting of the **James** was done in recent years, by a well-known local marine artist, J. Franklin Wright.

Active shipbuilding continued until about 1840. It then suffered a decline, as did the fisheries. The province of Nova Scotia was close to a financial crisis. The town, however, was well enough established to survive these setbacks. People could still live off the land at this time. Shipbuilding did continue but on a smaller scale. For example, the Embree shipyard continued to build schooners.

A new trade agreement was established with the United States between 1854 and 1866. The town continued to grow and was faced with more requests for new town lots. The area of town that had been the commons was now developed for sale.



## **Unit 2**

### **Lesson 2**

## **Economics in the Early Years**

The trade agreement was cancelled in 1866. It was followed by Canadian Confederation in 1867. Cape Bretoners were not sure if this was a good thing. Shipbuilding continued to decline as wooden ships were replaced with steel. Local shipbuilders were not prepared for this change.

After 1880, a younger Embree brother started H. W. Embree and Sons. They built small fishing boats and later built pleasure yachts. A map of this time shows this business on the waterfront between Pitt and Embree Streets. It was next to Peter Paint and Sons.

By this time, Port Hawkesbury was well-known as a seafaring port. The waterfront was bustling with activity. There were many privately owned wharves to serve the many commercial operations.

## Unit 2 Lesson 2

## Economics in the Early Years

### Understanding the Story:

Number the following events in the order in which they happened:

- \_\_\_\_\_ A trade agreement was established with the United States.
- \_\_\_\_\_ There were many privately owned wharves to serve businesses.
- \_\_\_\_\_ The Confederation of Canada was formed in 1867.
- \_\_\_\_\_ Local courts were established.
- \_\_\_\_\_ Shipbuilding suffered a decline, as did the fisheries.
- \_\_\_\_\_ The **James** was built by Peter John Brouard.
- \_\_\_\_\_ H. W. Embree and Sons built fishing boats and pleasure yachts.
- \_\_\_\_\_ A beautiful painting of the **James** was done by local artist, J. Franklin Wright.

### Vocabulary:

Using the nine vocabulary words from the story, write the correct word in the blank next to its meaning.

1. \_\_\_\_\_ hurrying; being busy
2. \_\_\_\_\_ dealing with trade and commerce
3. \_\_\_\_\_ . total number of people living in one place
4. \_\_\_\_\_ a group of provinces joined together for a special purpose
5. \_\_\_\_\_ two-masted sailing ships
6. \_\_\_\_\_ body of people chosen to rule a country
7. \_\_\_\_\_ something that gives happiness
8. \_\_\_\_\_ a sailing boat built for racing or cruising
9. \_\_\_\_\_ concerned with money matters

## Unit 2 Lesson 2

## Economics in the Early Years

### Syllables:

A syllable is a whole word or part of a word that has one vowel sound.

Examples:

grow → /grow/ (one sound)

growing → /grow/ing (two sounds)

- Words with vowels that each have their own sound are broken into syllables between those vowels.  
Examples:  
cruel → cru / el  
dual → du / al
- Words with double consonants are broken into syllables between the double consonants.  
Examples:  
settler → set / tler  
squatter → squat / ter
- Words that have prefixes or suffixes are broken into syllables between the prefix or suffix and the root word.  
Examples:  
government → govern / ment  
(The whole word would be divided → gov / ern / ment)  
masses → mass / es

### Syllables:

Break the following words into syllables: (The first one is done for you.)

1. island    is / land \_\_\_\_\_
2. Canso    \_\_\_\_\_
3. harbour    \_\_\_\_\_

## Unit 2 Lesson 2

## Economics in the Early Years

### Syllables:

4. confusing \_\_\_\_\_
5. census \_\_\_\_\_
6. export \_\_\_\_\_
7. financial \_\_\_\_\_
8. commercial \_\_\_\_\_
9. dealer \_\_\_\_\_
10. sailing \_\_\_\_\_

### To Know More:

1. When did Frank Wright paint the picture of the **James**? What was the ship used for? Where did it sail?
2. Locate the island of Guernsey on a map or in an atlas.
3. Who were some of the owners of the privately-owned wharves in Port Hawkesbury? Are there any of these wharves left?

Name: \_\_\_\_\_ Date: \_\_\_\_\_

Class: \_\_\_\_\_

## Vocabulary Challenge

Supply the missing letters. Rewrite the new word.



1. fi\*an\*\*\*l \_\_\_\_\_ 6. \*\*ho\*ner\* \_\_\_\_\_

2. \*\*ea\*u\*e \_\_\_\_\_ 7. \*o\*u\*\*\*ion \_\_\_\_\_

3. y\*\*h\*s \_\_\_\_\_ 8. com\*\*\*\*\*al \_\_\_\_\_

4. \*ov\*rme\*\* \_\_\_\_\_ 9. \*on\*\*d\*rat\*o\* \_\_\_\_\_

5. \*u\*\*lin\* \_\_\_\_\_

1. population	4. government	7. financial
2. schooners	5. Confederation	8. yachts
3. commercial	6. pleasure	9. bustling

Name: \_\_\_\_\_ Date: \_\_\_\_\_

Class: \_\_\_\_\_

## Vocabulary Challenge

Supply the missing letters. Rewrite the new word.



1. fi\*an\*\*\*| financial\_\_\_\_\_
2. \*\*ea\*u\*e pleasure\_\_\_\_\_
3. y\*\*h\*s yachts\_\_\_\_\_
4. \*ov\*rme\*\* government\_\_\_\_\_
5. \*u\*\*lin\* bustling\_\_\_\_\_
6. \*\*ho\*ner\* schooners\_\_\_\_\_
7. \*o\*u\*\*\*ion population\_\_\_\_\_
8. com\*\*\*\*\*al commercial\_\_\_\_\_
9. \*on\*\*d\*rat\*o\* Confederation\_\_\_\_\_

1. population	4. government	7. financial
2. schooners	5. Confederation	8. yachts
3. commercial	6. pleasure	9. bustling

## ANSWER KEY

### Unit 2 Economics in the Early Years

#### **Lesson 1**

Understanding the Story

1. **c** 2. **a** 3. **c**

Vocabulary

1. export 2. chandler 3. timber 4. adjacent 5. tannery  
6. brig

Plurals

1. settlers 2. winters 3. animals 4. fisheries 5. businesses  
6. shoes 7. censuses 8. lives 9. tanneries 10. valleys  
11. brigs 12. masses 13. supplies 14. men 15. families  
16. ferries

#### **Lesson 2**

Understanding the Story

5, 8, 6, 1, 4, 2, 7, 3

Vocabulary

1. bustling 2. commercial 3. population 4. Confederation  
5. schooners 6. government 7. pleasure 8. yachts 9. financial

Syllables

1. is/land 2. Can/so 3. har/bour 4. con/fus/ing 5. cen/sus  
6. ex/port 7. fi/nan/cial 8. com/mer/cial 9. deal/er  
10. salt/ing

---