

# FCA News



FOR MEMBERS OF THE FINNISH CENTER ASSOCIATION

April 2015

## CALENDAR OF EVENTS

### APRIL

- 03 Friday Night Buffet 5-8 pm
- 08 Rental
- 08 Board Meeting 6:30 pm
- 10 Finnish Election 12 noon-7 pm
- 11 Finnish Election 9 am-2 pm
- 12 Sunday Brunch 12 noon-1:30 pm
- 12 Sunday Adult Finnish Language Class 2-3pm
- 15 Rental
- 17 Friday Night Buffet 5-8 pm
- 17 Pasty Prep
- 18 Pasty Bake
- 19 Sunday Suomi Koulu 12 noon-2 pm
- 19 Sunday Finnish Film "Black Ice" 2 pm
- 19 Sunday Adult Finnish Language Class 2-3pm
- 20 Monday Scholarship Committee Meeting 1:30 pm
- 22 Rental
- 24 Friday Flea Market & Bake Sale 9 am-3 pm
- 25 Saturday Flea Market 9 am-3 pm
- 26 Sunday Suomi Koulu 12 noon-2 pm
- 26 Sunday Adult Finnish Language Class 2-3pm
- 26 Sunday Open House 1-4 pm
- 29 Wednesday Monthly Luncheon 12 noon



**RESERVATIONS ARE  
SUGGESTED FOR  
DINNERS AND LUNCHEONS**

### MAY

- 01 Friday Night Buffet 5 - 8 pm
- 02 Saturday Vappu Party 5 pm- midnight
- 10 Sunday Suomi Koulu 12 noon-2 pm
- 10 Sunday Mother's Day Potluck 1-4 pm
- 13 Rental
- 13 Wednesday Joint Board Meeting 6:30 pm
- 15 Friday Night Buffet 5-8 pm
- 17 Sunday Scholarship Reception 1 pm
- 17 Finnish American Singers of Michigan Concert 4 pm
- 17 Sunday Suomi Koulu 12 noon-2 pm
- 20 Rental
- 23 Saturday Eurovision Viewing Party 3 pm

### Weekly Events

- Finnish American Singers  
Mondays 7 pm
- Library  
Open Monday 10 am-2 pm
- Nikkarin Talo  
Mondays 9 am
- Finlandia Garden Club  
Mondays 9 am

### Monthly Events

- Finnish Conversation  
1st Friday of the month 10 am
- Sunday Brunch  
2nd Sunday of the month  
12-1:30 pm
- Book Club  
Last Monday of the month 1 pm
- Luncheon  
Last Wednesday of the month Noon
- Open House  
Last Sunday of the month 1-4 pm

## CHAIRMAN'S CORNER

Spring is just around the corner. Beautiful sunny days have shown up increasingly reminding us of the warm weather that will eventually be here despite the harsh cold that we have experienced these past couple of months.

Volunteers are hard at work organizing events and planning for future happenings. The new Board has been seated and ready to tackle the issues at hand. New revised by-laws are available at the front office or can be mailed to you upon request. The board is also working on new procedures and policies.

Our financial situation greatly depends on our rental income and poker events. We have had a lot of inquiries and have booked several weddings, bridal showers, birthdays, memorial services and graduations. All of these functions require a lot of work in planning, set-up and dismantling. We are in dire need of more volunteers. Please consider helping even if it is only for a few hours. Due to the shortage of volunteers we had to hire a cleaning service to do a regular cleaning. Any donation towards those expenses would be greatly appreciated. We feel it is important to keep the facility in presentable shape for our future rentals.

The Sibelius jubilee has gotten a nice start. The Livonia Symphony held a concert featuring Sibelius music; we had a beautiful presentation of Sibelius by Steven Niemi in conjunction with the Kalevala event. Later in the year we will have a couple of featured performances of Sibelius music in Ann Arbor. Watch the newsletter for more information.

Our directory is finally off the printers and available. It can be picked up at the Finnish Center or mailed to you upon request. A small donation would be appreciated in order to cover the cost of printing and postage. A big portion of the cost is already absorbed thanks to the advertisers in the directory. We are very appreciative of those who purchased advertisements to help defray directory production costs. Please consider giving these folks your business should the need arise.

As always, if you have any questions or comments, do not hesitate to call or email us. We can be reached at the Finnish Center or you can call me at (734) 834-6085.

Mia Lamminen  
Chairman

Looking ahead:  
FinnFest 2015  
Buffalo, NY  
October 8-12, 2015



35200 W. Eight Mile Road  
Farmington Hills, MI  
48335-5108  
Tel: (248) 478-6939  
Fax: (248) 478-5671  
finnishcenter@gmail.com  
www.finnishcenter.org

### Officers

Mia Lamminen, Chairman  
Roger Wanttaja, Vice Chairman  
Robert Waissi, Secretary  
Marlene Ruuskanen, Treasurer

### Board of Trustees

#### 1 Year

Lois Makee, Robert Waissi,  
Roger Wanttaja

#### 2 Year

Lila Ball, Mia Lamminen,  
Margaret Laurila

#### 3 Year

Olli Lamminen, Henrikki Panstar,  
Marlene Ruuskanen

### Alternates

#1 Wayne Walli  
#2 Carol Tudball  
#3 Katie Waissi

### Financial Review

Fran Fadie, Eunice Gould,  
Sarah Wiideman

### Committee Chairpersons

#### Building & Grounds

Roger Wanttaja

#### Cultural

Yvonne Lockwood

#### Education

Katri Ervamaa

#### Finance

Melissa Hill-Biddix

#### Gift Shop

Margaret Laurila

#### Mailing

Alice Manley

#### Membership

Anu Panstar

#### Publicity & Publications

Fran Fadie

#### Social

Lila Ball

### SENIOR CITIZEN HOUSING CORPORATION

Paul C. Hendrickson, Chairman

#### *Tapiola Village*

Laura Fultz, Manager  
248 471-3802

**Tapiola@ameritech.net**

#### *Freedom Square*

Jennifer Bridges, Manager  
248 442-7250

**www.fcaseniorhousing.org**

## Eurovision Song Contest

Saturday, May 23  
3:00 pm

Join us to watch this years contest  
live from Vienna, Austria

Please bring a snack to share  
Admission free



## FOR RENT

If you, or someone you know, has a need for a hall to rent for special events such as birthdays, weddings, anniversaries, baby or bridal showers, memorial services, and more, please consider the Finnish Center.

Contact the FCA office at (248) 478-6939.



## Vappu Party ~ Celebration of Spring!

Saturday, May 2  
5pm to Midnight

Magic Show for Children  
Music by FinnFolk  
Family Karaoke  
Balloons for Everyone!

Potluck Dinner  
Main Course Provided  
A-M: Bring an Appetizer or Salad  
N-Z: Bring Dessert  
Cash Bar

Admission \$25.00  
Seniors and Students \$15.00  
Children Free



*Happy May Day ~ Iloista Vappua ~ Glada Vappen*

## SIBELIUS TRIBUTE DELIGHTS LISTENERS IN LIVONIA

The crisp, sunny Saturday afternoon of February 28, 2015, was glorious – even more so when in the spacious Clarenceville High School auditorium the Livonia Symphony Orchestra blessed us with a tribute to Jean Sibelius on the 150<sup>th</sup> anniversary of his birth. This tribute began with rich and compelling full orchestration of Sibelius' *Finlandia*. Next, violinist Ioanna Galu joined the reconfigured orchestra for Mozart's lighter *Violin Concerto No. 1 in B Flat Major*. Finally, the brass returned to the orchestra for Sibelius' melodic, powerful *Symphony No. 2 in D Major, opus 43*.

In 1902, after composing *Symphony No. 2* while he was first in Italy and then in Finland, Jean Sibelius conducted the Helsinki Philharmonic Society for the first performance of this work. Over one hundred years later, aren't we fortunate that his symphonies, *Finlandia*, and other widely varied music continues to delight and enrich our lives!

Jane Phillips



## MEMORIALS

When making a memorial donation, you may direct it toward a specific fund. The funds available are: FCA General Fund, Library, Scholarship, Hoijakat Folk Dancers, Drama Club, Finn Weavers, Garden Club, Happiness Fund, FinnFolk Musicians and Finnish American Singers. If a donation is undesignated, it goes to the General Fund for expenses of the Center.

Please make your check out to the Finnish Center Association and send donations to: FCA, 35200 West Eight Mile Road, Farmington Hills, MI 48335.

You may also direct your donation toward the Senior Housing, but then your check must be made out to FCA Senior Housing Corp.

Please include full name, address, date of death of the deceased as well as the name and address of the next of kin to whom the acknowledgement card is to be mailed. **Also include all names of donors.** If the deceased is a non-member of the FCA please include city and state of residence.

In memory of FCA life member **Evelyn Keskinen** (2/28/15) a donation has been made by Robin & Larry Mosher.

In memory of FCA life member **Carl W. Taipalus** (1/30/08) a donation has been made by Michele Taipalus.

## FINNISH FILM SUNDAY, APRIL 19 2 pm

### **BLACK ICE**

2007

Director Peter Kotwica

*Black Ice* is a drama set in Helsinki primarily about the relationship between two women, Saara and Tuuli. There is a wife, husband, and the husband's lover. This is a film about love, betrayal, jealousy, revenge, and despair. One reviewer of the film states that this film "could be the first in a while to break the rule that Finnish movies don't travel (unless they're by one of the Kaurismaki brothers). . . . This gripping, edgy melodrama could easily slot into the European and worldwide arthouses. . . that are often occupied by Danish dramas." This is why you should not miss *Black Ice*.



## WANTED

Assistant volunteer treasurer is needed one day a week from 10 am - 4 pm. It can be Monday, Wednesday or Friday, However Monday is the preferred day as there is work to complete from the weekend activities.

Contact the FCA office if you would like to volunteer.



## PASTY SALE

**Friday, April 17**

Peel & Dice 10 am - 2 pm

**Saturday, April 18**

Assemble, Bake,  
& Package Begins at 6 am

Order Pick-up 11 am - 4 pm

10% discount for email orders only with an order of 10 or more.

fca-pasties@comcast.net



## GOING PLACES

**Religions of the World** - Tuesday, April 14, \$62. This is a tour of four churches in the metro area. A guide at each church will talk about that church's individual practice. Lunch will be at Peabody's. Depart at 8:45 am and return about 4:30 pm. See more information below.

**Meadowbrook Theatre** – Sunday, April 26, 2015, \$82. The performance will be Meshuggah Nuns. Lunch at Kings Court Castle. Depart at 10:15 am and return about 5:15 pm. See more information below.

**Ethnic Dine Around** - Tuesday, May 12, \$67. Appetizers will be at Moro's in Allen Park (Italian). The main course will be at De Luca's in Westland (Italian). Dessert at El Nibble Nook in Livonia (Mexican). Depart at 10:15 am and return about 3:15 pm. See more information below.

**Jewels of Detroit** - Tuesday, June 16, \$63. The trip includes a narrated tour of Historic Fort Wayne and Belle Isle, including a tour of the Aquarium. Lunch is at Macabee's in Midtown and later dessert at Ben & Jerry's. Depart at 9 am and return about 4:30 pm. See more information below.

All of these trips are combined with the Nardineers on 11 Mile Rd. Have questions? You may call Betty at (248) 553-7618 or Pearl at (248) 541-0054.



### Neil J. Lehto

Attorney and Counselor At Law

nlehto@sbcglobal.net

4051 Wakefield Road  
Berkley, Michigan 48072

(248) 545-1753 (Phone & Fax)

## FLEA MARKET & BAKE SALE

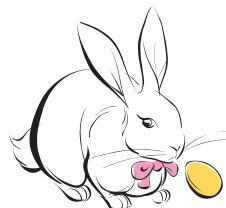
**When:** Friday April 24 &  
Saturday April 25  
9 am - 3 pm  
**Where :** 35200 W. 8 Mile Rd.,  
Farmington Hills, MI  
**Why:** Sell or find treasures



6' & 8' tables available.  
Volunteers needed.  
Contact the FCA at (248) 478-6939

## SUNDAY BUNNY BRUNCH

Sunday, March 29  
10 am - 12 noon



Children under 3 yrs. - free  
Children 3-12 yrs. - \$4  
Adults & Children over 12- \$6

## SUNSHINE LADY

Sending get-well cards, thinking-of-you cards and words-of-encouragement cards to FCA members.

This little-known function has been around for many years, and can only be accomplished when I am notified that someone needs a card. Send or call your card requests to the attention of the "Sunshine Lady" at the FCA.

Thank you, Eunice Potti Gould



## FROM THE LIBRARY

The Finnish Literature Society (*Suomalaisen Kirjallisuuden Seura* or *SKS*) is an organization founded in Finland in 1831 to promote literature written in Finnish. Among its first publications was the *Kalevala*, the Finnish national epic compiled by Elias Lönnrot. In the early 1800's the upper classes in Finland spoke Swedish. It has been said that only about a half-dozen upper class families spoke Finnish at the time. There was a need to expand the scope of literature written in **Finnish**. This literature was to be found, not among the upper classes, but among the people of the countryside. Elias Lönnrot realized this when he compiled the *Kalevala* (1835, 1894) and the *Kanteletar* (1840). By collecting and publishing folklore material the Society was instrumental in building a Finnish-language Finland and a national identity.

According to the society's own literature, the SKS

- is a learned society and non-governmental organization founded in 1831 - documents, preserves and studies Finnish culture
- is Finland's largest scholarly and non-fiction publisher in the field of the humanities
- provides grants for the export of Finnish literature
- conveys information about the oral and written Finnish cultures and their study
- also provides services on the Web ([www.finlit.fi](http://www.finlit.fi))

The SKS House is located at Hallituskatu 1 in Helsinki. In 1985 I had the opportunity to visit their archives and view the original books containing Elias Lönnrot's journals with the materials he used for compiling the *Kalevala*. Little did I realize at the time that the same archives held poems written by my grandfather, Eelu Kiviranta, who had submitted them to the society while a young man before he emigrated to the United States in 1901.



Left: Eelu Kiviranta and his niece Martha.



Right: In the background: Elias Lönnrot's journals in the Finnish Lit. Society's archives.

In autobiographical poems Eelu says he had poems running around in his head from the time he was a little boy, but he had no way of recording them until he taught himself to write at age fifteen. I have no idea how he became aware of the Finnish Literature Society but by 1897, at age 24, he had submitted 96 poems to the society, some of them quite lengthy. I was not aware of this collection until recently. However, I had been familiar with the poems he wrote after his arrival in the U.S. In 2010, after being urged to do so by many who do not read Finnish, I translated fifty of them, which were published in the book *A Rascal's Craft*. The poems give a glimpse into the immigrant experience, from what it was like to work in the copper mines, to the Temperance movement, to commentary on America's new-found obsession with the horseless carriage.

(continued on page 10)

## THE MEANING OF THE SAMPO

by Donald Autio

As a poetic metaphor, the Sampo has been interpreted in many ways. In relation to Lönnrot's *Kalevala*, it's associated with the ability to bring prosperity to its possessors. In Rune 10 the Sampo is described as follows:

Takoi Sammon taitavasti:  
laitahan on jauhomylllyn,  
toisehen on suolamyllyn,  
rahamyllyn kolmantehen.

English translators have rendered this description of the Sampo as a three-sided, ciphered mill, one side of which grinds out flour, another salt and the third, money. It is therefore a device capable of generating wealth. It's forged by the smith, Ilmarinen, in order to secure the hand of the daughter of the Mistress of Pohjola. The description of the Sampo is ambiguous as at the conclusion of Rune 10, the Sampo is described as grinding out binfuls of food, things to sell, and things for the home.

The Sampo bears a resemblance to other magical devices such as the rings found in modern interpretations of myth by Wagner in his opera, *The Ring of the Nibelungen*, and by Tolkien in his fantasy, *The Lord of the Rings*. In these interpretations, possession of ring brings its owner wealth and power along with ill fortune.

There are more complex interpretations based on shamanistic mythology such as the Sampo's symbolism of the North Star as a gateway between heaven and earth. Some of these theories delve deep into the origins of the Sampo myth, but for purposes of reading the *Kalevala*, it might be thought of as a magic mill bestowing wealth on its owner. In today's world we might think of the Sampo as symbolizing technology as a bringer of prosperity. According Juha Y. Pentikäinen in his *Kalevala Mythology*, the Sampo runes are the epic heart of the *Kalevala*. The Sampo provides the framework which unifies the rest of the poetic subject matter. The battle between Kalevala and Pohjola is over control of the Sampo. According to Pentikäinen, the Sampo in ancient times symbolized something that symbolized thriving and prosperity. Although depicted as a magic mill in Lönnrot's *Kalevala*, some rune singers had other interpretations of the Sampo such as a sacred statue, a boat or even an eagle. Other modern interpreters have seen a deeper spiritual or cosmological significance to the Sampo.

Emil Petaja (1915-2000), a Finnish American author, who was the first Author Emeritus of the Science Fiction Writers of America, is best known for his series of novels based on the *Kalevala*. In this science fiction epic, genetic descendants of the original *Kalevala* heroes engage in their own version of *Star Wars*. In the Petaja version, the *Kalevala* Ilmarinen, using the energy of the stars, forged the Sampo or Star Mill that was capable of creating anything asked of it like a replicator in the TV series *Star Trek*. In the future world, the Star-Witch, Louhi, the mistress of Pohyola, who was one of the Pahaliset (alien forces that had once tried to conquer Earth during Finland's remote past), transformed the Star Mill into a powerful nuclear weapon that could destroy all matter. The mission of Ilmarinen's descendant, Ilmar, is to thwart Louhi's ambition to destroy the world.

The Suomikoulu students used their imagination to create their own Sampos, pictured here on display.

These wondrous magical objects were inspired by the myths of the *Kalevala*, and showcase the creativity (and artistic ability!) of the Suomikoulu students, ages 5-13.





## WHAT DO YOU KNOW ABOUT FCA SENIOR HOUSING?

Here are a few facts to consider:

\*As an FCA member you are a member of the FCA Senior Citizens Housing Corporation (FCASHC).

\*This corporation was formed in the 1970's to provide a safe living environment for FCA members and friends and for all those who seek affordable senior housing in a pleasant environment.

\*The FCASHC is governed by a nine member board of trustees elected by Finnish Center/FCASHC members at the Annual Meeting in February on the same day as the FCA Annual Meeting.

\*There are three components to FCA Senior Housing: Tapiola I and Tapiola II located next door to the Finnish Center and Freedom Square on Freedom Road near Drake. You are welcome to visit each at any time during business hours.

\*You can learn more about senior housing by speaking with any member of the senior housing board or by calling the FCA office.

## SPRING

Now summer scores victory over winter  
 Pleasant spring begins her entry  
 The harshness of winter is laid to rest  
 The brooks to awaken are doing their best  
 Gloom and darkness fade away  
 The days lengthen and light is here to stay  
 This time of year is of all the best  
 The bird's song awakens us from our rest  
 Spring is a promise in its song so free  
 Their joyful tunes ring from every tree  
 Nature awakens with strength anew  
 Gathering vigor for what it must do  
 When winter bade us its last farewell  
 The sun streamed in to stay a spell  
 Winter, please take away your cold works  
 Take your cold cover and all your weird quirks  
 Gone now is winter's power and might  
 The ground awakens to springtime bright  
 The luster of summer it soon will bear  
 For that our Creator our thanks will hear  
 Spring brings sweetness all around  
 In fascination now we view the ground  
 You are most welcome, springtime air  
 You must see it yourself, your works so fair  
 Spring is our visitor most welcome  
 You arrive after traversing a time most glum  
 We've yearned for you most earnestly and long  
 Now we sing praises with jubilant song.

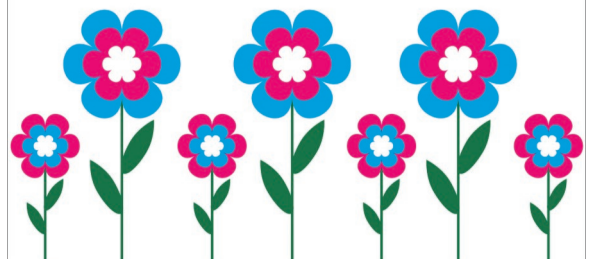
—By Eelu Kiviranta  
 (Trans. by Lillian Lehto)

## SOCIAL

On Sunday, March 29 from 10 am -12 noon, we will be having our first Bunny Brunch! The Easter Bunny will be here to visit with everyone during brunch! Don't forget about our annual Flea Market & Bake ale on April 24 & 25. Lunch will be available.

The Wednesday, April 29 monthly luncheon we will have guest speaker Patty Johnston of ComForcare Home Care of Farmington Hills tell us a little bit about the services they can provide for yourself or your loved ones needing assistance with daily living. Happy Spring everyone!

Lila and Terry Ball





## FINLAND TODAY

First, let's start with something on the lighter side, how about babies. According to the Finnish Population Register Center, there were 58,343 babies born in Finland last year, 29,861 boys and 28,542 girls. The most popular name for a boy? It was Elias. Next were Leo, Onni, Eino, and Oliver. And for a girl? It was Sofia. After Sofia the most popular names for girls were, Aino, Aada, Ella, and Emma. For Finland's Swedish speaking population, the most popular name for a boy was Oliver, followed by Anton, Leo, Benjamin, and Hugo. For girls it was Amanda, followed by Ellen, Emma, Ella, and Edith.

Prices fall, but rents keep going up. That's the headline I heard on YLE, the Finnish radio network. So I decided to check it out. And sure enough that's what's going on. "Home rental costs are increasing out of step with overall price trends -- and there is no relief in sight for frustrated flat-hunters in Finland's urban areas." The Helsinki area showed the largest increase in rental rates, 5.2%, while for the rest of the country it was about 2%. Meanwhile the inflation rate for the year was on the negative side, led by lower prices for fuel and food. "Landlords are raising rents because their expenses have risen sharply", so says the head of the Finnish Landlords Association, Minna Koro-Kanerva. She says that profits from rentals are simply too low. "For instance in Helsinki, the pretax profit on a rental apartment is 2.5%, which is certainly very small. The underlying problem is a shortage of rental units in growing urban areas", so says Martti Korhonen of Statistics Finland. Koro-Kanerva suggests that tax incentives would bring more housing, both old and new into the market.

How are the Finnish women doing in the work place? According to the Women in Work Index as done by the consulting firm of PricewaterhouseCoopers, Finnish women are ranked 5th in the world. According to the index, Norway is the best country for working women, followed by Denmark, Sweden, and New Zealand. The index takes into account, the equality of earnings with men, proportion of women in the work place (Finland ranks first in this category), female unemployment rate, and the proportion of women in full time employment.

At the Finnish EMMA awards, Pepe Wilberg took home three awards, the Male Soloist of Year, and his album "Pepe & Saimaa", Rock Album of the Year, and also the Critics Choice award. The band, Haloo Helsinki, also won three awards, the Band of the Year, and their album, "Kiitos ei ole Kirošana" (Thank You is not a Curse Word), won the Album of the Year and the Pop Album of the Year awards. The Finnish rap artist, Cheek, was awarded the Special EMMA prize and the Finnish Artist of the Year, which is voted by the public, and his video, "Aarirajoille" (to the limits), was chosen the Music Video of the Year.

The Uuden Musiikin Kilpailu (New Music Competition), a nationwide song contest which selects the country's Eurovision representative, drew a record television audience. The final of the song contest, broadcast live on YLE, the Finnish national broadcaster, attracted 750,000 viewers. The band, Pertti Kurikan Nimipäivät (PKN), won the contest. They will represent Finland in the Eurovision Song Contest in May. PKN is composed of four middle-age men with learning disabilities.

And finally, a couple of newlyweds, Hilma and Heikki were having breakfast when Hilma asks Heikki, "Do you know what day today is?"

Heikki answered, thinking that he must have forgotten Hilma's birthday, "Of course I do."

At ten o'clock, the doorbell rang. It was the florist with a dozen of beautiful long stem roses.

At two o'clock, the doorbell rang again. It was a delivery from Sanders with a box of Hilma's favorite chocolates.

At four pm, the deliveryman brought Hilma a gorgeous mink coat.

Hilma could hardly wait for Heikki to come home from work. When Heikki walked through the door, Hilma gave him a big hug and a kiss. "Well Heikki", Hilma explained, "First came the beautiful roses, which was followed by my favorite chocolates, and then came this gorgeous mink coat. It's been the most fantastic Groundhog Day of my life!"

Markku Ketola marketola@yahoo.com

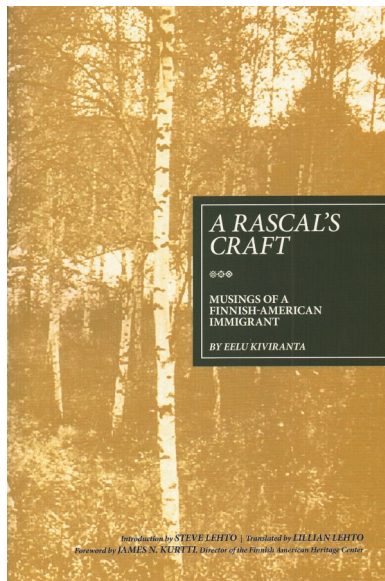
## Library (continued from page 6)

Recently while browsing on Google I happened to run across the SKS site and learned that they had Eelu's early poems in their archives. We arranged for an exchange of their collection for two copies of *A Rascal's Craft*. This treasure provided information of Eelu's early life, his experience in the Finnish Army and his thoughts on life in Finland at the time. The February edition of the *Finnish American Reporter* includes an article about this collection.

The recent acquisition plus our earlier information about Eelu have provided material for a video posted on *youtube* recently. It can be accessed by Googling "Eelu Kiviranta/youtube".

The book *A Rascal's Craft* is available from several sources including Amazon, the Northwind Bookstore in Hancock, and the Finnish Center gift shop. It can also be checked out from our library.

Lillian Lehto,  
FCA librarian



## GIFT SHOP SPECIALS

**March 25 - April 7** all in stock Iittala is available for 20% off the advertised price.

**April 24 & 25**, Spring Flea Market, selected items will be reduced 60%. (Membership discount not available on these bargains).

Members, bring your membership card in for the 5% discount on purchases over \$25.

Come in and check out daily unadvertised specials.

## APRIL IN THE GARDENS

April is the official start of spring in the gardens. The crocus, daffodil, hyacinth, and tulips will be making their presence known this month. Many of the birds species start returning and nesting. Trees, shrubs, perennials and, unfortunately, the weeds start greening.

We are often asked by FCA members if our gardens have any Finnish plants. Actually, many of the perennial plants, shrubs, and trees on our property are also found in southern Finland. Finland has only two plants unique to the country; a dandelion species, and a form of hackweed. Due to climatic conditions plants that grow in the northern most portions of Finland will not be found here, although if we continue to have Februarys such as this past one perhaps that may change.

This year in addition to consolidation and elimination of some of the gardens we plan on doing some invasive elimination including buckthorn and wild grape.

If you see cars near the woodshop on Monday morning, please drop by and join us in our projects, to chat, or have a cup of coffee.

If you have any questions or comments, or items to donate, please contact me at (734) 546-5190 or [gaylegullen@hotmail.com](mailto:gaylegullen@hotmail.com)

Gayle Gullen  
Finlandia Garden Club President

## ***FREE YOURSELF FROM HIGH DENTAL BILLS***

### **NBC, INC. DISCOUNT DENTAL PLAN**

provides discounts from 20% to 50%  
for most dental services  
from some of the finest dentists in the country.

Annual payment of \$69 can include up to  
nine members (residing in the same home  
and students in college).

**Enroll online: [www.nbcdental.com](http://www.nbcdental.com) or**

**Telephone: 866.498.7914**

## **ADVERTISING RATES**

<b>DEADLINE:</b>	<b>DEADLINE FOR MAY ISSUE IS APRIL 5TH</b>
<b>EDITOR CONTACT INFO:</b>	PAUL RAJALA
<b>LAYOUT AND DESIGN:</b>	NANCY RAJALA
<b>E-MAIL:</b>	<a href="mailto:nrajala@comcast.net">nrajala@comcast.net</a>

### ***FCA NEWS ADVERTISING RATES & SPECIFICATIONS***

FCA News is published 11 times annually (June-July issue is combined) by and for members of Finnish Center Association. Circulation is about 1,000 of your fellow FCA members, and others, per issue.

**Deadline/payment for ad is the 5th of the month preceding publication.**

Column (ad) width is 2-1/4" for rates quoted below. Other sizes quoted on request.

Rates for a camera-ready, black & white ad, per three month period:

3 month rate .....	1" ad - \$30.00.	1.5" ad - \$45.00	2" ad - \$60.00
--------------------	------------------	-------------------	-----------------

Pay for full year .....	1" ad - \$100.00.	1.5" ad - \$150.00	2" ad - \$200.00
-------------------------	-------------------	--------------------	------------------

Photos: B&W photo ads incur a one-time charge of \$25.00 payable at first insertion.

## **READ THE FCA NEWSLETTER ONLINE**

## FINNISH CENTER ASSOCIATION



35200 W. Eight Mile Road  
Farmington Hills, MI 48335-5208

Prsrt STD  
U.S. Postage  
PAID  
Farmington, MI  
Permit NO 250

Current Resident or

### FCA MEMBERSHIP APPLICATION OR \_\_\_\_ RENEWAL

Date \_\_\_\_\_ Phone: \_\_\_\_\_ email: \_\_\_\_\_

Applicant \_\_\_\_\_

Applicant/Spouse \_\_\_\_\_

Address \_\_\_\_\_

City \_\_\_\_\_ State \_\_\_\_\_ Zip code \_\_\_\_\_

Signature \_\_\_\_\_ Are you of Finnish descent? \_\_\_\_\_

- ☐ Annual membership, single, one vote ..... \$50.00
- ☐ Annual membership, senior\* or youth\*, one vote ..... \$25.00
- \*Senior, over 65 years, youth under 30 years of age
- ☐ Annual membership, couple, two votes ..... \$100.00
- ☐ Annual membership, family, one vote ..... \$75.00
- ☐ Life membership, one vote ..... \$500.00
- ☐ Life membership, senior, one vote (see membership for details)

Amount enclosed \_\_\_\_\_

Please make check payable to FCA and send to Finnish Center Association,  
Membership, 35200 W. Eight Mile Road, Farmington Hills, MI 48335-5108

Recommended by: \_\_\_\_\_

Visit us on "Finnish Center and Hall" Facebook page and "like" us to get the latest updates!



#### FCA Senior Living

One and two bedroom rentals  
Convenient, safe and affordable in  
highly desirable Farmington Hills, MI

Contact us at:

Tapiola Village (248) 471-3802

Freedom Square (248) 442-7250

[www.fcaseniorhousing.org](http://www.fcaseniorhousing.org)



#### THAYER-ROCK FUNERAL HOME

33603 Grand River,

Farmington, MI

(248) 474-4131

Paul N. Potti, Director