


Regulated Medical Waste Management


What You Need to Know and Do





Course Handouts & Post Test

To download presentation handouts, click on the attachment icon 

Course evaluation and post test are available from your course catalog

To achieve credit for this course, close the video portion when completed and click on Start Test 






Where has this been?

Where will it go?

How will it get there?

What risks does it carry?



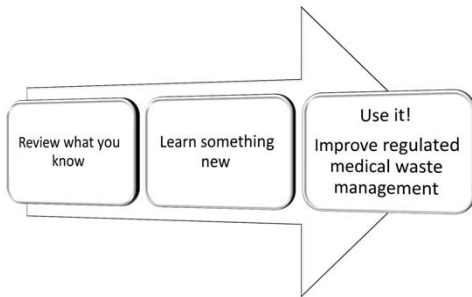
Course Objectives

At the end of this course, participants will be able to:

1. Identify regulated medical waste items relevant to one's hospice / palliative role.
2. Describe safety procedures for handling and discarding contaminated sharps, medications and other regulated waste.



As an adult learner ...



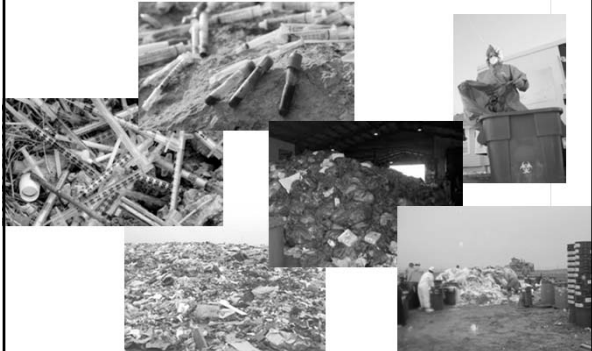
Regulated Medical Waste Management

What You Need to Know

- Identify hazardous, regulated waste items relevant to your hospice/palliative job
- Sources for regulations



What is it? Where does it go?



Regulated Medical Waste (a.k.a. Hazardous Waste)

- Liquid; Semi-liquid blood
- Other potentially infectious materials (OPIM)
- Contaminated items that would release blood or OPIM in a liquid or semi-liquid state if compressed
- Items that are caked with dried blood or OPIM and capable of releasing these materials while handling
- Contaminated sharps
- Pathological and microbiological wastes containing blood or OPIM



Name examples common for hospice & palliative care.

Which of these wastes apply to you, in your job?



Pick a different team role and identify what wastes s/he might encounter on the job.

- Hospice Aides
- Social Workers
- Chaplains
- Supply Room Staff
- Maintenance Staff
- Volunteers

Regulated Medical Waste

- Liquid
- Semi-liquid blood
- Other potentially infectious materials (OPIM)
- Contaminated items that would release blood or OPIM in a liquid or semi-liquid state if compressed
- Items that are caked with dried blood or OPIM and capable of releasing these materials while handling
- Contaminated sharps
- Pathological and microbiological wastes containing blood or OPIM





Regulated Medical Waste Must Be Safely ...

- Segregated
- Handled
- Labeled
- Stored
- Disposed of


In accordance with

- Federal regulations
- State laws
- Local ordinances




Why It Matters

*This needle might carry to you
or someone else ...*




- Human Immunodeficiency Virus (HIV)
- Hepatitis B Virus (HBV)
- Hepatitis C Virus(HCV)
- Other infections




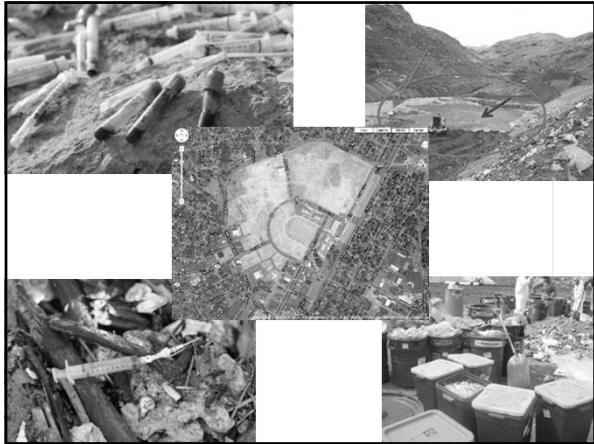
SOURCES: Why do we need *all* of these?

- Federal Regulations - OSHA
1910.1030(d)(4)(iii)
- State Laws
- Local Ordinances
- Plus + Your Agency's specific
policies and procedures



Why these matter →





Regulated Medical Waste Management


What You Need to Do

- Safely contain and discard sharps
- Safely contain and discard other regulated waste
- Describe where to find additional resources




Let's think it through.

How would you safely ... ?



- Segregate
- Handle
- Label
- Store
- Dispose



1. Containers *Before* Use

• Discard contaminated sharps immediately or as soon as feasible in containers that are:

- closable;
- puncture resistant;
- leak proof on sides and bottom; and
- labeled or color-coded as required.



2. Containers *During* Use

• Ensure that during use, containers for contaminated sharps must be:

- easily accessible to personnel and located as close as is feasible to the immediate area where sharps are used or can be reasonably anticipated to be found;
- maintained upright throughout use; and
- replaced routinely and not be allowed to overfill.



Do Not Overfill

3. Containers *Being Moved*

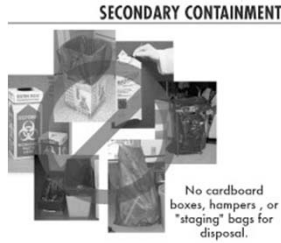
• When moving containers of contaminated sharps from the area of use, you must:

- close the container immediately prior to removal or replacement to prevent spillage or protrusion of contents during handling, storage, transport, or shipping; and



3. Containers *Being Moved, cont'd*

- place it in a secondary container if leakage is possible that is properly labeled or color-coded, closable and constructed to contain all contents and prevent leakage during handling, storage, transport, or shipping



DANGER!



- Reusable containers may not be opened, emptied, or cleaned manually or in any other manner that would expose employees to the risk of percutaneous injury

Other Regulated Waste - Containment



- Place regulated waste in containers which are:
 - closable;
 - leak-proof
 - labeled or color-coded as required; and
 - closed prior to transport
- If outside contamination of the regulated waste container occurs, place it in a second container that is closable, constructed as above and properly labeled.

Other Regulated Waste - Disposal

Your agency must follow applicable, federal, state and local regulations for the disposal of all regulated waste, such as:

- medications
- bloody/contaminated Personal Protective Equipment (PPE)



Specifics For Your Agency



- **Policies and Procedures**
 - Disposal of sharps containers and biohazardous waste bags
 - Transport of items or not
 - Disposal of medications and state laws
- **For Hospice/Palliative Settings**
 - Home
 - Nursing Facilities, Assisted Living
 - Inpatient/Residential Unit Settings

Educate Patients and Families/Caregivers

- What do families/caregivers need to know and do regarding waste management?
Consider, the patient's care involves ...

- HIV/AIDS
- Hepatitis B
- MRSA
- Diabetes sharps
- Disposing of medications



Keep It Safe and Simple

Rules Regarding Medication Disposal in Hospice

The Medicare Conditions of Participation (CoPs) require hospices to have:

- Written policies and procedures for managing and disposing of controlled drugs in patient's home, discussed with patient and family at the time when controlled drugs are first ordered.
- Must document in clinical record that these policies and procedures were provided and discussed.



Steps for Hospices to Take

- Create or update your hospice's policy and procedure on medication disposal
 - Refer to HPNA's drug disposal guideline and other resources at www.HPNA.org
- Check to see if your state or local municipality has its own laws or regulations regarding disposal of household medications
- Educate your staff on the importance of following the policy
- Carefully weigh the risk of diversion of certain drugs against any potential environmental impact. Err on the side of caution



Components of a Drug Disposal Policy

- **Education**
 - Annual inservice to all employees
 - Assure that patients and caregivers receive education in a manner and language that they understand
- **Collection**
 - Identify persons responsible for destruction
 - Determine procedures for collection and disposal
 - Dispose of drugs on site, unless a community take-back program is available

NURSES MUST NEVER TRANSPORT DRUGS.



Ref: HPNA's recommendation for safe drug disposal in the home setting

Components of a Drug Disposal Policy

- **Tracking**
 - Procedure for documentation that follow state guidelines
 - Store drug disposal documentation in patient's medical record
- **Disposing**
 - In a manner that does not allow the drug to be unintentionally ingested or easily retrieved

Ref: HPNA's recommendation for safe drug disposal in the home setting



How to Properly Dispose of Medications

- Follow any specific instructions
 - Ex. fentanyl patch
- Remove drugs from original containers
- Mix/dilute drugs with undesirable but non-toxic substances
 - Suggestions include mixing unused medications with coffee grounds or kitty litter and other forms of non-toxic dilution prior to disposal
 - Seal in plastic bag or container
- Flush only in certain instances



<http://www.fda.gov/downloads/Drugs/ResourcesForYou/Consumers/BuyingUsingMedicineSafely/UnderstandingOver-the-CounterMedicines/ucm107163.pdf>



A Surveyor Will Look For



- Your agency's policies and procedures about regulated waste management / hazardous waste management / medication destruction
- Your agency's supplies of appropriate sharps containers and other supplies
- Staff training
- Safe, appropriate patient care procedures
- Appropriate family/caregiver education



Summary Know & Do

• **Know**

- Regulated waste items relevant to your job
- Safety procedures defined by your agency, in accordance with federal, state, and local regulations

• **Do**

- Dispose of any regulated waste safely
- Educate patients, families and caregivers appropriately



Revisiting Course Objectives

It's the end of this course. Are you able to ...?

1. Identify regulated medical waste items relevant to one's hospice / palliative role.
2. Describe safety procedures for handling and discarding contaminated sharps, medications and other regulated waste.
3. Describe safety procedures for handling and discarding other regulated waste.



Put It In Action

What I'm already doing well:

What I will improve:

My personal action plan:



More Resources

- **Questions? Clarification? Ask your supervisor and/or your agency's Safety Compliance Officer.**
- OSHA FactSheet: Protecting Yourself When Handling Contaminated Sharps
www.osha.gov
- OSHA "Medical Waste"
<http://www.fedcenter.gov/assistance/facilitytour/solid/medical/>




More Resources

- "Hazardous Waste Management and Disposal," *Hospice Policies and Procedures – Patient Care*, Weatherbee Resources, Inc., 2011.
- HEN's "What You Need to Know and Do" courses
 - Infection Control
 - Hepatitis B
 - Hazard Communications



Course Handouts & Post Test

Thank you for viewing this course on the Hospice Education Network 

The Course evaluation and post test are available from your course catalog page

To achieve credit for this course, close the video portion when completed and click on Start Test

Start Test



Regulated Medical
Waste Management

What You Need to Know and Do



hospice education
network, inc.
