

## OKLAHOMA CERTIFIED CORNER RECORD

  X   Existing           Obliterated           Lost

C.M. Document No. \_\_\_\_\_

NW Corner of Section      30 Township      2 North      Range 11 West

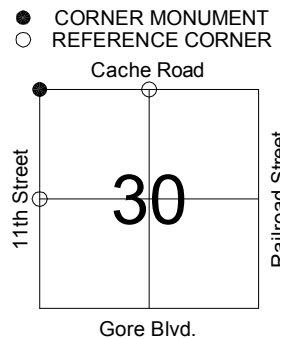
Meridian I.M. County Comanche

DESCRIPTION OF ORIGINAL MONUMENT AND ACCESSORIES AND ANY SUBSEQUENT

RESTORATION: (Give Sources of Information)

Set Sandstone 18 x 10 x 3 1/2

Department of Libraries GLO Notes.



MONUMENT DESCRIPTION:

Description of Corner Evidence Found:

Found Stem of ODOT monument C-16-160.  
Matches ties on CCR filed by Duane R. Brunner, PLS 1314, dated 19 January 1996.

Coordinates established using classical static GPS, minimum two independent vectors  
Included in the HPGN adjustment of 1993

Description of Corner Evidence Set:

None Set. Area has large amount of traffic.

REFERENCE MEASUREMENTS: (At Least Three)

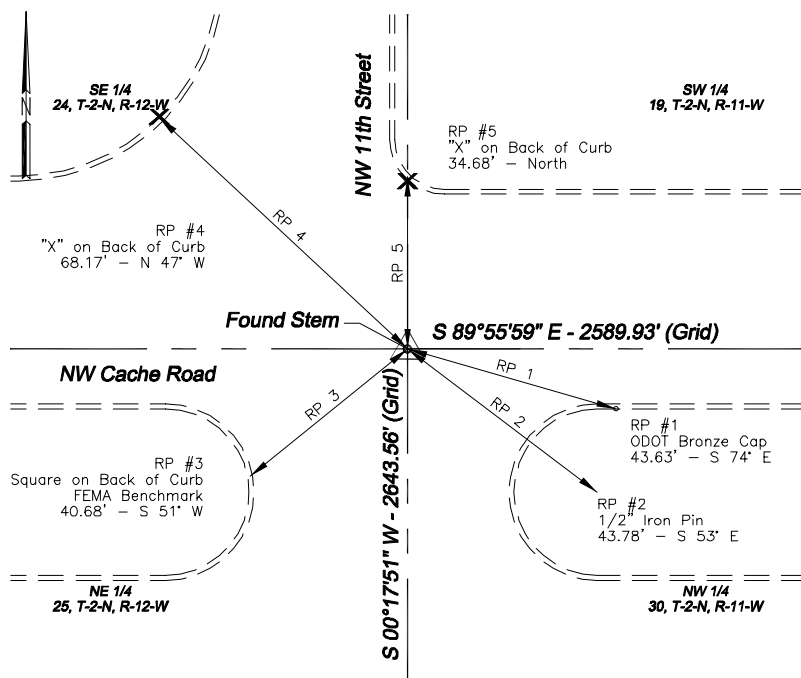
Description:

RP # 1	ODOT Bronze Cap NW side of bridge opening.	43.63'	S 74° E
RP # 2	1/2" Iron Pin	43.78'	S 53° E
RP # 3	Square on Curb (FEMA Bench Mark)	40.68'	S 51° W
RP # 4	"X" on Back of Curb	68.17'	N 47° W
RP # 5	"X" on Back of Curb	34.68'	North

SC # 1	N 1/4 Corner PK Nail	Ground Dist.: 2590.22'	Grid Dist.: 2589.93'	Grid Bearing: S 89°55'59" E
SC # 2	W 1/4 Corner "X" in Concrete	Ground Dist.: 2643.87'	Grid Dist.: 2643.56'	Grid Bearing: S 00°17'51" W

## STATEMENT OF METHOD USED TO DETERMINE CORNER LOCATION: (Lost Corners Only)

SKETCH:



**SURVEYOR'S CERTIFICATION:** This is to certify that the monuments and accessories indicated above are correctly described and shown. I further certify that the corner records were checked for any filings prior to making this survey.

Signature: Edward Deral Paulk Jr., PLS 1279  
City Of Lawton, Engineering Department

Firm	Phone Number
103 SW 4th Street	(580) 581-3318

Street Address/Post Office Box	Web Site
Lawton, Oklahoma 73501	<a href="http://www.cityof.lawton.ok.us/engineering">www.cityof.lawton.ok.us/engineering</a>

City, State and Zip Code  
23 July 2003 P.L.S. 1279

Date and Registration Number

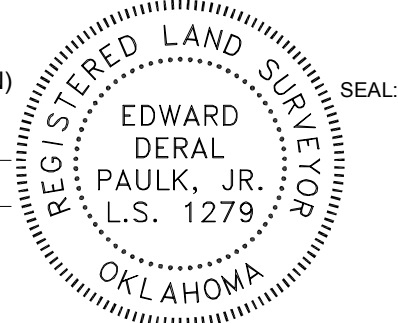
OKLAHOMA STATE PLANE COORDINATES: NAD 1983 (ADJ 1993 HARN)  
Coordinates are in US Survey Feet.

X: E 1846744.851      Y: N 469706.076      ZONE: SOUTH

Accepted and Filed: \_\_\_\_\_

Archivist, Archives & Records Division  
Oklahoma Department of Libraries  
200 Northeast 18th Street  
Oklahoma City, Oklahoma 73105

Date: \_\_\_\_\_ 200 Northeast 10th Street  
Oklahoma City, Oklahoma 73105



File Name: 25S5.dwg