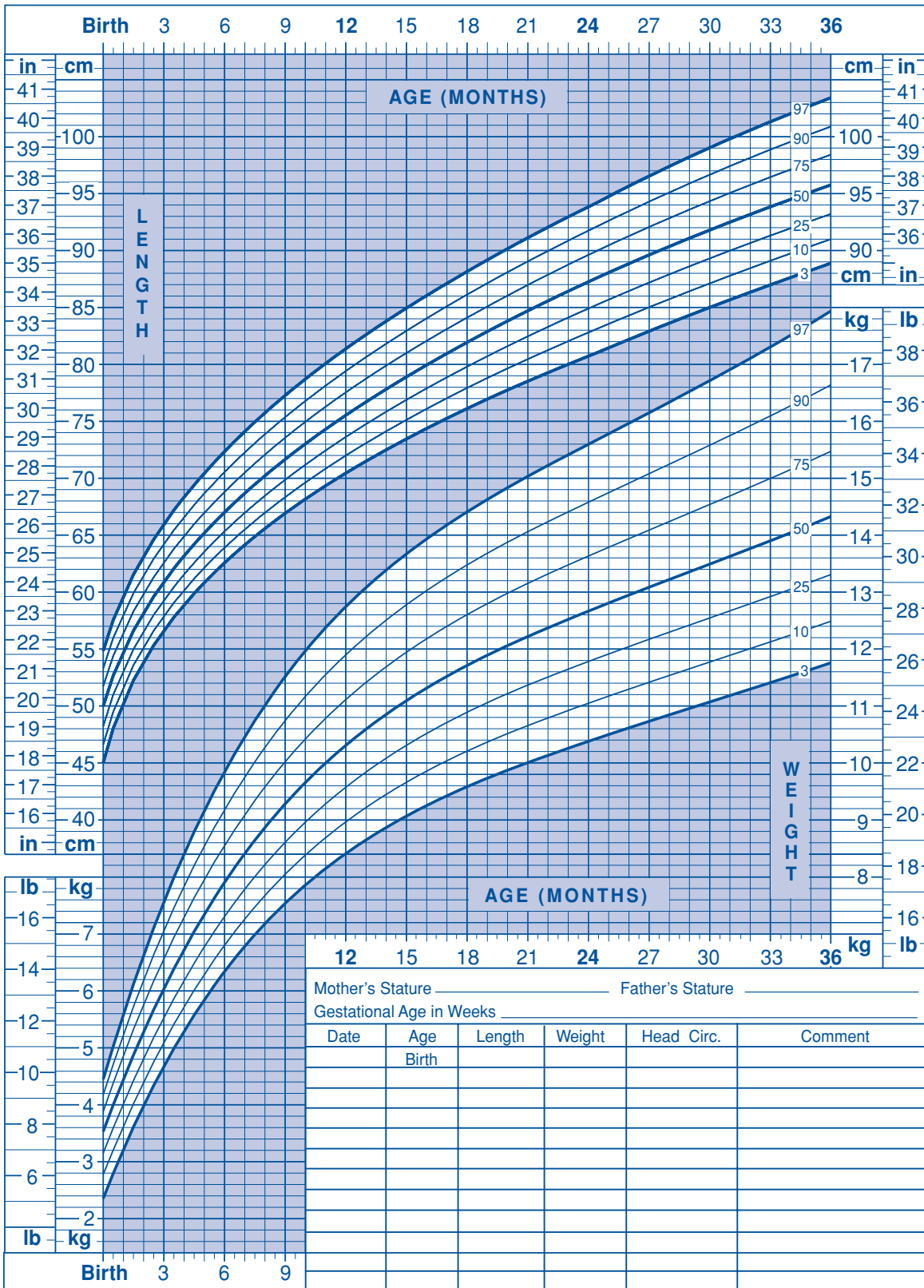


Birth to 36 Months: Boys Length-for-age and Weight-for-age Percentiles

Name _____ Record # _____



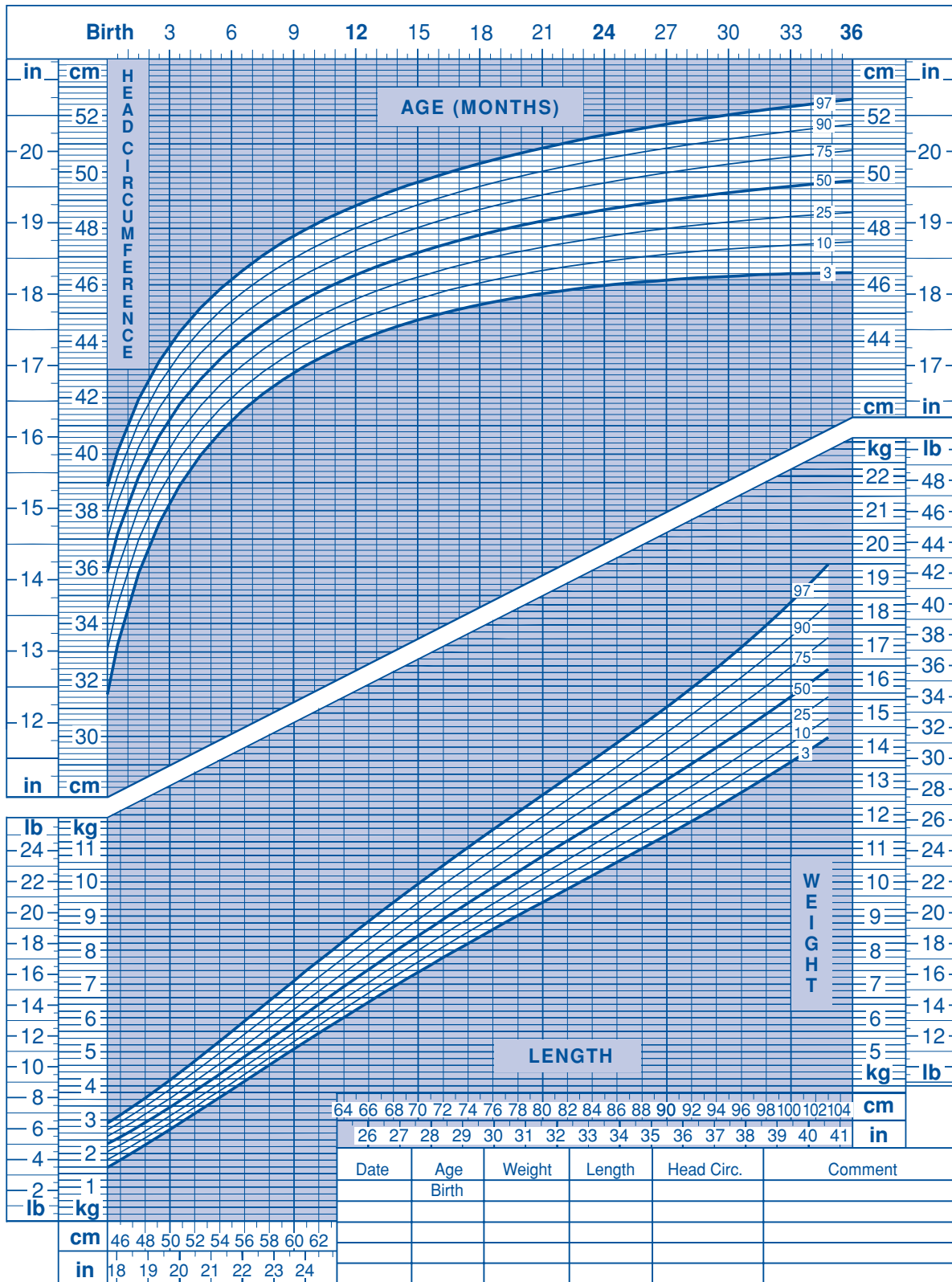
*SOURCE: Developed by the National Center for Health statistics in collaboration with the National Center for Chronic Disease Prevention and Health Promotion (2000).

<http://www.cdc.gov/growthcharts>

This chart is consistent with CDC growth data as of November 2007.

Birth to 36 Months: Boys Head circumference-for-age and Weight-for-length Percentiles

Name _____ Record # _____



Abbott Nutrition
www.abbottnutrition.com

EarlyShield[™] for immune support
Similac Advance[®]
Milk-based infant formula

Similac Organic[®]
Milk-based infant formula

Similac Sensitive[®]
Lactose-free milk-based formula

Similac Sensitive R.S.[®]
Lactose-free milk-based formula

Similac Isomil Advance[®]
Soy-based infant formula

Similac Alimentum[®]
Hypoallergenic infant formula

Similac NeoSure[®]
Specially fortified for prematurity

Similac Go & Grow[™]
Formula for older babies
Available in both milk-based and soy

EleCare[®]
Nutritionally complete amino acid-based medical food and infant formula with iron

PediaLyte[®]
Oral electrolyte maintenance solution/freezer pops

PediaSure[®]
Complete, Balanced Nutrition[®]

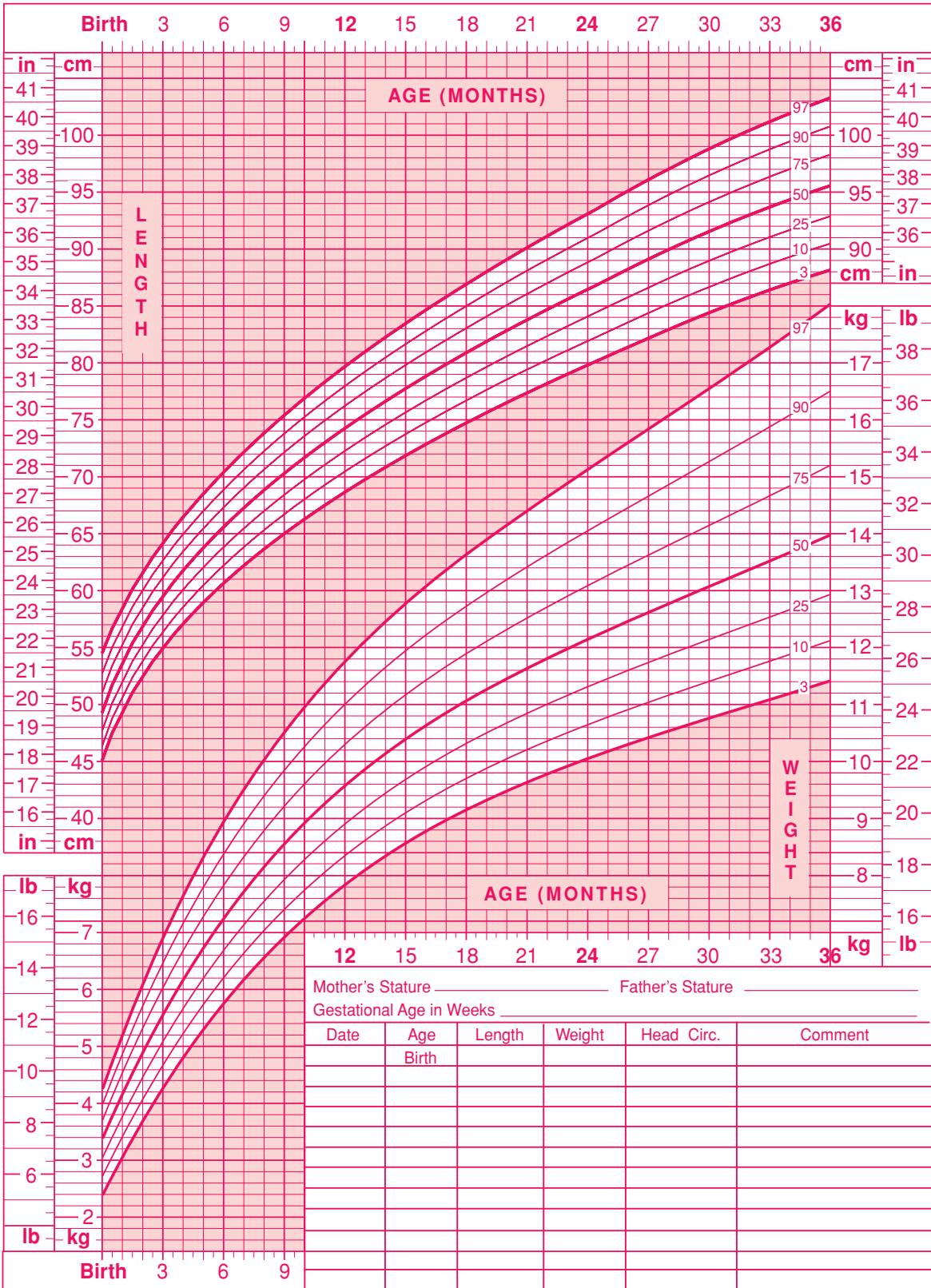
*SOURCE: Developed by the National Center for Health statistics in collaboration with the National Center for Chronic Disease Prevention and Health Promotion (2000).

<http://www.cdc.gov/growthcharts>

This chart is consistent with CDC growth data as of November 2007.

Birth to 36 Months: Girls Length-for-age and Weight-for-age Percentiles

Name _____ Record # _____



www.abbottnutrition.com



Milk-based infant formula



Milk-based infant formula



Lactose-free milk-based formula



Lactose-free milk-based formula



Soy-based infant formula



Hypoallergenic infant formula



Specially fortified for prematurity



Formula for older babies
Available in both milk-based and soy



Nutritionally complete amino acid-based medical food and infant formula with iron



Oral electrolyte maintenance solution/freezer pops



Complete, Balanced Nutrition

*SOURCE: Developed by the National Center for Health statistics in collaboration with the National Center for Chronic Disease Prevention and Health Promotion (2000).

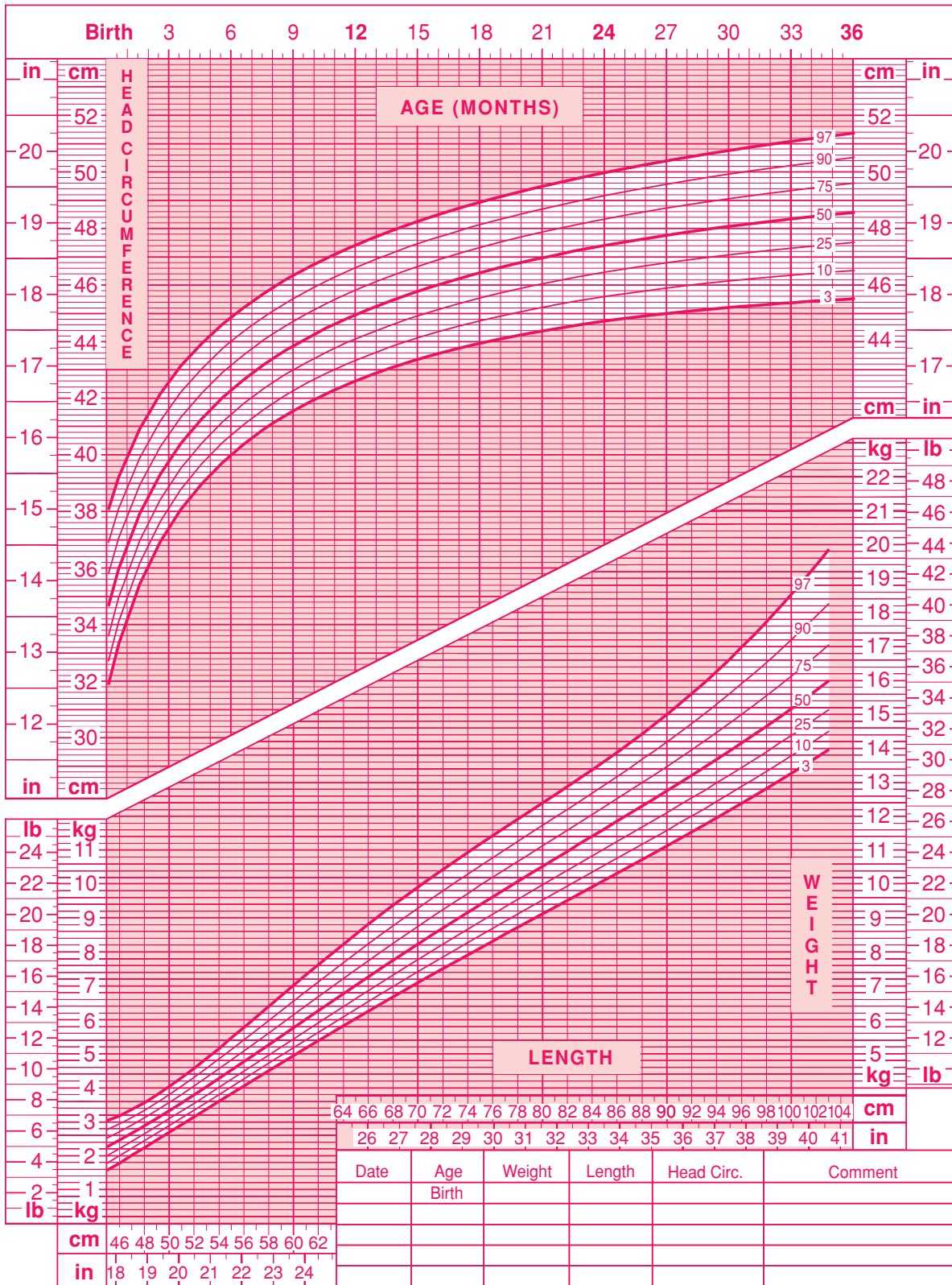
<http://www.cdc.gov/growthcharts>

This chart is consistent with CDC growth data as of November 2007.

Birth to 36 Months: Girls

Head circumference-for-age and Weight-for-length Percentiles

Name _____ Record # _____



www.abbottnutrition.com



Milk-based infant formula



Milk-based infant formula



Lactose-free milk-based formula



Lactose-free milk-based formula



Soy-based infant formula



Hypoallergenic infant formula



Specially fortified for prematurity



Formula for older babies Available in both milk-based and soy



Nutritionally complete amino acid-based medical food and infant formula with iron



Oral electrolyte maintenance solution/freezer pops



Complete, Balanced Nutrition

*SOURCE: Developed by the National Center for Health statistics in collaboration with the National Center for Chronic Disease Prevention and Health Promotion (2000).

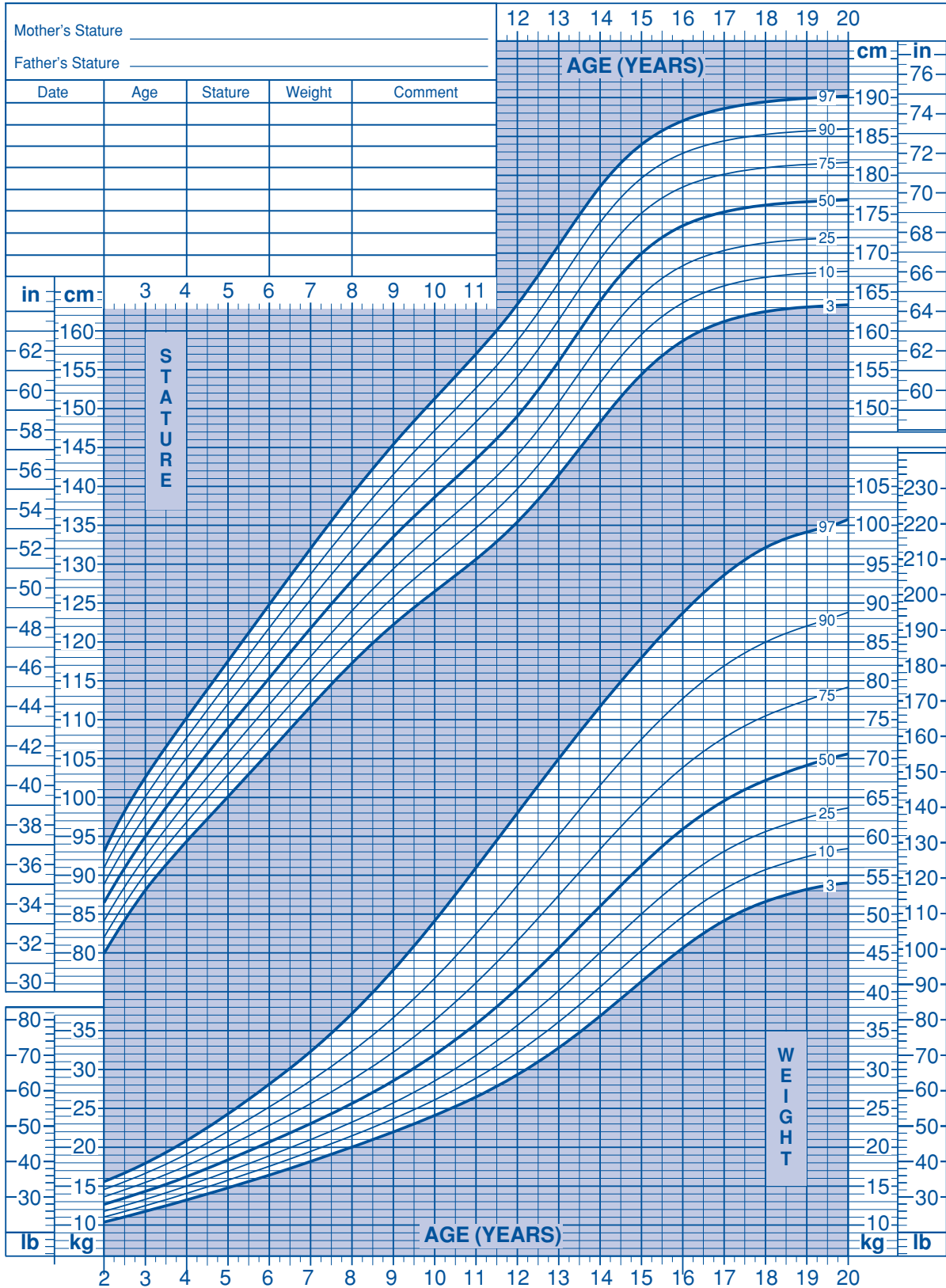
<http://www.cdc.gov/growthcharts>

This chart is consistent with CDC growth data as of November 2007.



2 to 20 Years: Boys Stature-for-age and Weight-for-age Percentiles

Name _____ Record # _____



Abbott Nutrition
www.abbottnutrition.com

EleCare
Nutritionally complete amino acid-based medical food and infant formula with iron

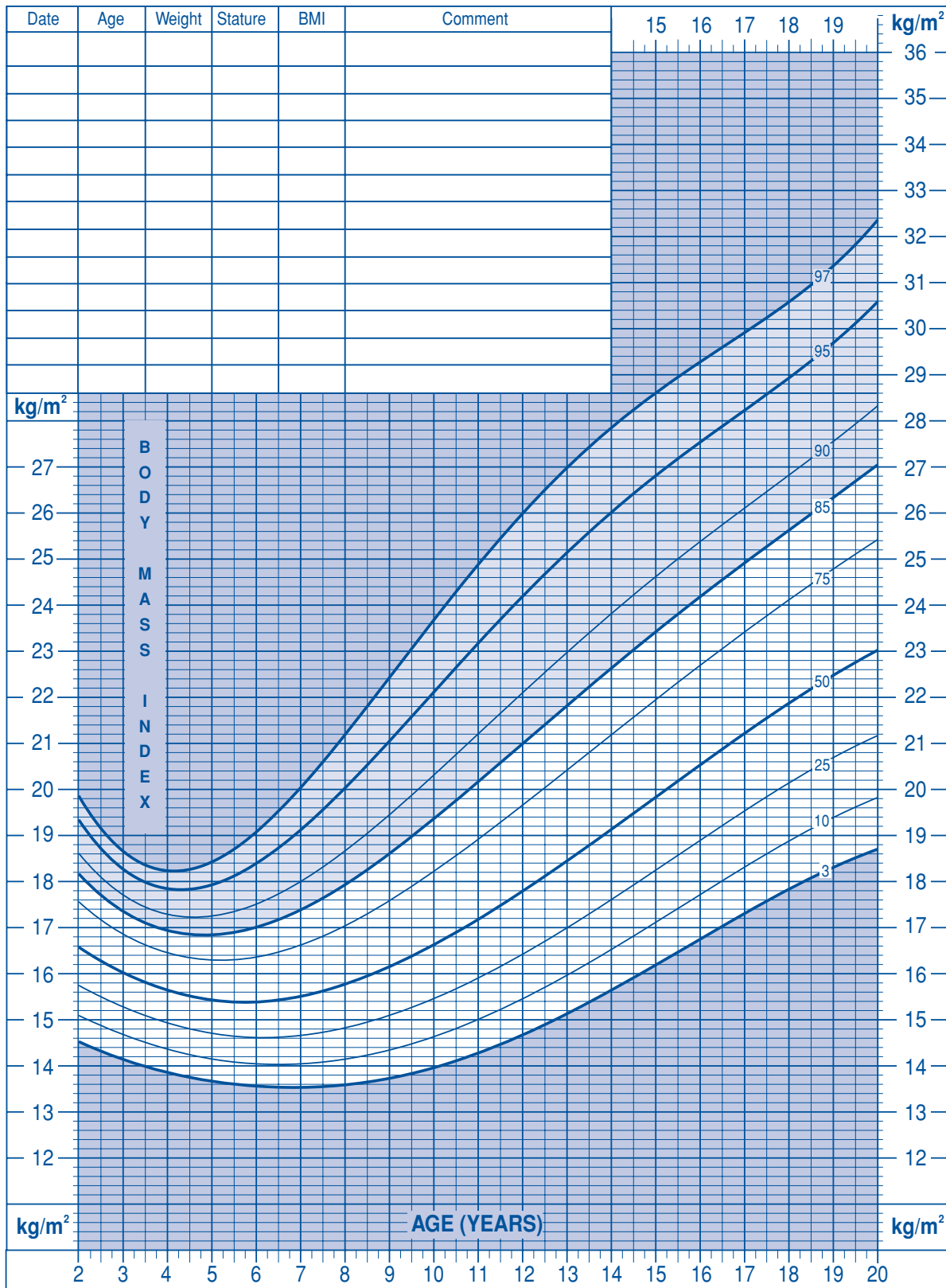
PediaLyte
Oral electrolyte maintenance solution/freezer pops

PediaSure
Complete, Balanced Nutrition

*SOURCE: Developed by the National Center for Health statistics in collaboration with the National Center for Chronic Disease Prevention and Health Promotion (2000).
This chart is consistent with CDC growth data as of November 2007.
<http://www.cdc.gov/growthcharts>

2 to 20 Years: Boys Body mass index-for-age Percentiles

Name _____ Record # _____



Abbott
Nutrition
www.abbottnutrition.com

EleCare
Nutritionally complete amino acid-based medical food and infant formula with iron

PediaLyte
Oral electrolyte maintenance solution/freezer pops

PediaSure
Complete, Balanced Nutrition®

*SOURCE: Developed by the National Center for Health statistics in collaboration with the National Center for Chronic Disease Prevention and Health Promotion (2000).

This chart is consistent with CDC growth data as of November 2007.
<http://www.cdc.gov/growthcharts>

Calculating Body Mass Index

Metric Formula: Weight in kilograms ÷ Stature in centimeters ÷ Stature in centimeters x 10,000 = BMI (kg/m²)
English Formula (fractions/oz must be entered as decimal values): Weight in pounds ÷ Stature in inches ÷ Stature in inches x 703 = BMI (kg/m²)

MATURATIONAL ASSESSMENT OF GESTATIONAL AGE (New Ballard Score)

NAME _____ SEX _____
 HOSPITAL NO. _____ BIRTH WEIGHT _____
 RACE _____ LENGTH _____
 DATE/TIME OF BIRTH _____ HEAD CIRC. _____
 DATE/TIME OF EXAM _____ EXAMINER _____
 AGE WHEN EXAMINED _____
 APGAR SCORE: 1 MINUTE _____ 5 MINUTES _____ 10 MINUTES _____

NEUROMUSCULAR MATURITY

NEUROMUSCULAR MATURITY SIGN	SCORE							RECORD SCORE HERE
	-1	0	1	2	3	4	5	
POSTURE								
SQUARE WINDOW (Wrist)								
ARM RECOIL								
POPLITEAL ANGLE								
SCARF SIGN								
HEEL TO EAR								
TOTAL NEUROMUSCULAR MATURITY SCORE								

SCORE
 Neuromuscular _____
 Physical _____
 Total _____

MATURITY RATING

SCORE	WEEKS
-10	20
-5	22
0	24
5	26
10	28
15	30
20	32
25	34
30	36
35	38
40	40
45	42
50	44

PHYSICAL MATURITY

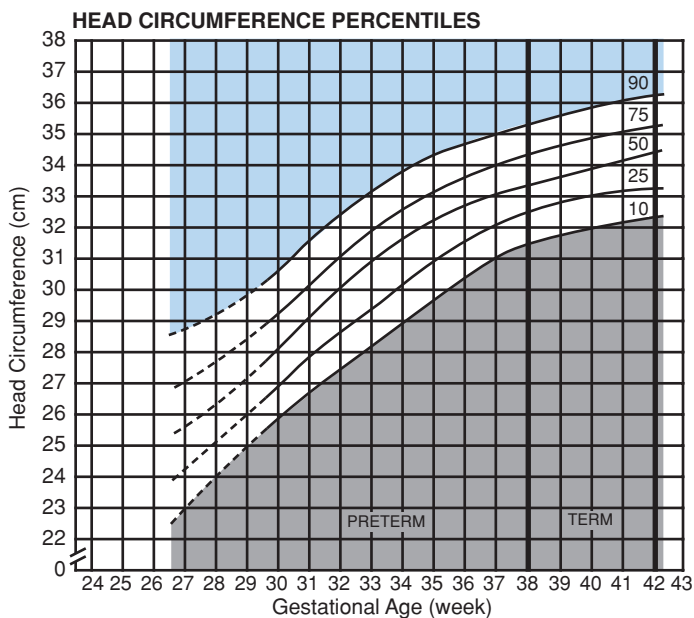
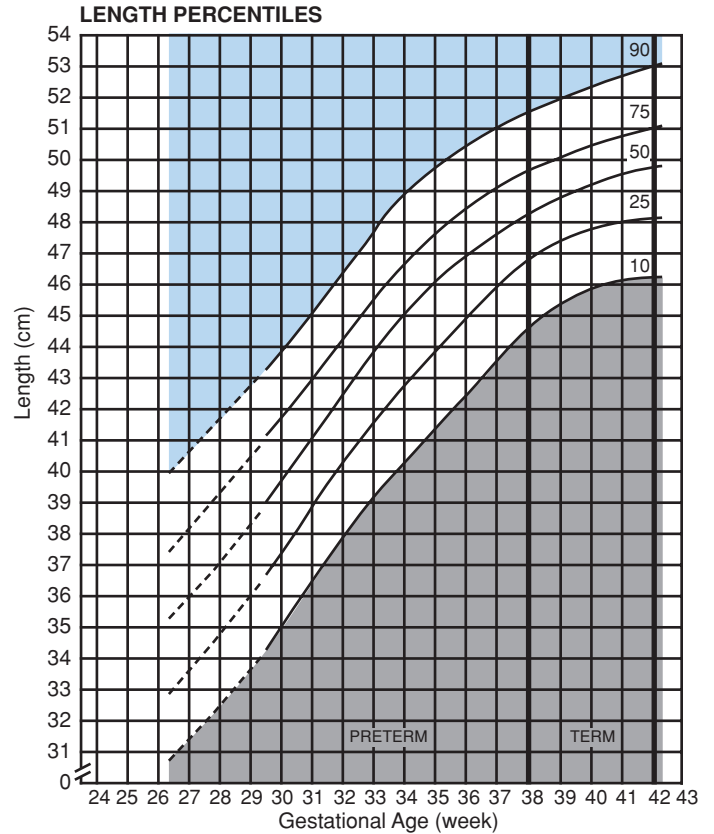
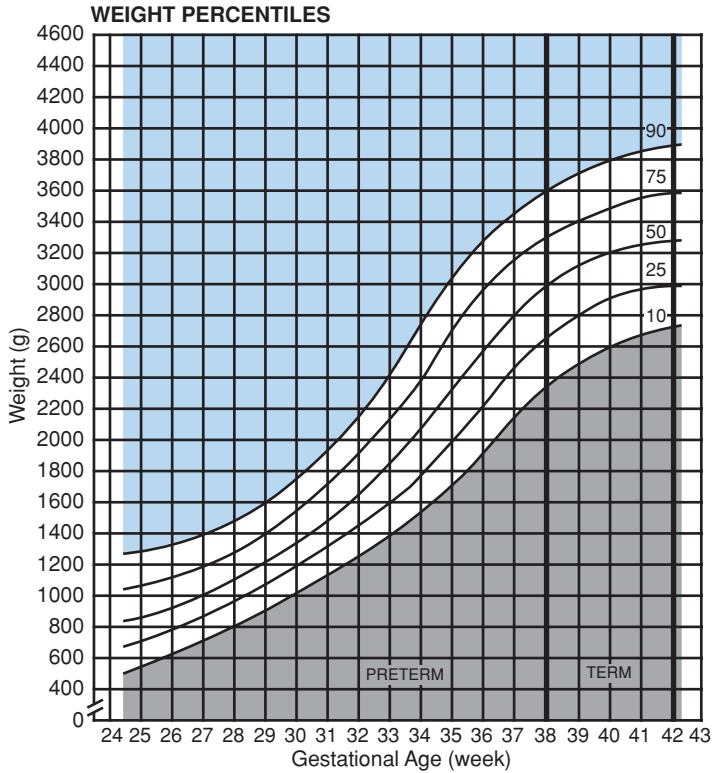
PHYSICAL MATURITY SIGN	SCORE							RECORD SCORE HERE
	-1	0	1	2	3	4	5	
SKIN	sticky friable transparent	gelatinous red translucent	smooth pink visible veins	superficial peeling &/or rash, few veins	cracking pale areas rare veins	parchment deep cracking no vessels	leathery cracked wrinkled	
LANUGO	none	sparse	abundant	thinning	bald areas	mostly bald		
PLANTAR SURFACE	heel-toe 40-50 mm: -1 < 40 mm: -2	>50 mm no crease	faint red marks	anterior transverse crease only	creases ant. 2/3	creases over entire sole		
BREAST	imperceptible	barely perceptible	flat areola no bud	stippled areola 1-2 mm bud	raised areola 3-4 mm bud	full areola 5-10 mm bud		
EYE / EAR	lids fused loosely: -1 tightly: -2	lids open pinna flat stays folded	sl. curved pinna; soft; slow recoil	well-curved pinna; soft but ready recoil	formed & firm instant recoil	thick cartilage ear stiff		
GENITALS (Male)	scrotum flat, smooth	scrotum empty faint rugae	testes in upper canal rare rugae	testes descending few rugae	testes down good rugae	testes pendulous deep rugae		
GENITALS (Female)	clitoris prominent & labia flat	prominent clitoris & small labia minora	prominent clitoris & enlarging minora	majora & minora equally prominent	majora large minora small	majora cover clitoris & minora		
TOTAL PHYSICAL MATURITY SCORE								

GESTATIONAL AGE (weeks)
 By dates _____
 By ultrasound _____
 By exam _____

Reference
 Ballard JL, Khoury JC, Wedig K, et al: New Ballard Score, expanded to include extremely premature infants. J Pediatr 1991; 119:417-423. Reprinted by permission of Dr Ballard and Mosby—Year Book, Inc.

CLASSIFICATION OF NEWBORNS (BOTH SEXES) BY INTRAUTERINE GROWTH AND GESTATIONAL AGE^{1,2}

NAME _____ DATE OF BIRTH _____ LENGTH _____
 HOSPITAL NO. _____ SEX _____ HEAD CIRC. _____
 RACE _____ BIRTH WEIGHT _____ GESTATIONAL AGE _____
 DATE OF BIRTH _____



CLASSIFICATION OF INFANT*

	Weight	Length	Head Circ.
Large for Gestational Age (LGA) (>90th percentile)			
Appropriate for Gestational Age (AGA) (10th to 90th percentile)			
Small for Gestational Age (SGA) (<10th percentile)			

*Place an "X" in the appropriate box (LGA), AGA or SGA) for weight, for length and for head circumference.

References

- Battaglia FC, Lubchenco LO: A practical classification of newborn infants by weight and gestational age. *J Pediatr* 1967; 71:159-163.
- Lubchenco LO, Hansman C, Boyd E: Intrauterine growth in length and head circumference as estimated from live births at gestational ages from 26 to 42 weeks. *Pediatrics* 1966; 37:403-408.

Reprinted by permission from Dr Battaglia, Dr Lubchenco, Journal of Pediatrics and Pediatrics