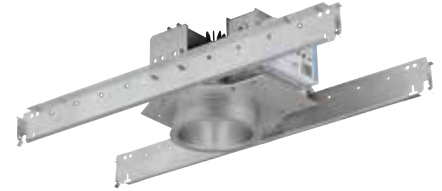


Revelation LED
OM4LED

4" LED 1500 Lumen Wall Wash



application

- Philips Lightolier OM4LED downlight utilizes with the proprietary remote phosphor technology to produce one of the most efficient and advanced LED systems available for general illumination.

light engine

- Philips Lightolier mixing chamber/optical assembly: Remote phosphor technology provides increased efficiency and color stability by redirecting back reflected light. The phosphor lens assembly converts high brightness blue light into white light for an even diffused pattern, eliminating bright spots often created by individual LEDs. This technology provides consistent, stable color with CCT color control of +/- 100K over the life of the light engine and provides 20% higher efficiency.
- LED Array: The LED Array consists of a metal core circuit board with 16 high brightness royal blue LEDs.
- Color: Available in three CCT options, 3000K, 3500K or 4000K with 80CRI +/-2%.
- Electrical: The power supply/driver features Advance Intelli-volt 120-277VAC 50/60hz, standard dimming driver with 0-10V analog dimming capability. The power supply is overload and short circuit protected as well as thermally regulated to prevent overheating. Sound rating A. Refer to dimming compatibility spec sheet for complete details. Driver has rated lifetime of 50,000 hours.
- Lifetime/Lumen Maintenance: 50,000 hour lifetime at 70% lumen maintenance light engine.

- Housing: Precision die stamped 18ga galvanized steel mounting pan and yoke assembly. Allows for ceiling thickness up to 1-3/8". Yoke supports weight of heat sink and light engine assembly to prevent stress on finished reflector.
- Reflector: Precision spun .050 aluminum reflectors are self flanged and snap to heat sink for consistent alignment to the optical assembly. Provides 50 degree visual cutoff to source and source image.
- C-Channels: C-Channels are included and provide vertical and horizontal adjustments. These allow for fast and adjustment free installation in T-bar ceilings with 1/2" tile. C-Channels simply snap on grid for proper alignment in 24" O.C. grid systems.
- Junction Box: 16 ga galvanized steel. UL listed for 8 No. 12 AWG, 90C through branch circuit conductors. Allows inspection below ceiling.
- Service: Modular construction allows for easy maintenance of complete system below ceiling. Removing reflector provides easy access to heat sink and light engine assembly. This assembly may be removed by depressing the springs which attach to the yoke and then simply opening protective cover and unplugging the push in connector from the LED board.

listings & warranty

- ETL, cUL Listed (Suitable for wet location applications.)
- LED life calculations are based upon application junction temperatures an driver currents at or below IESNA - LM-80-08 manufacturer's test data. IES test performed per IESNA - LM-79-08.
- 5 year Warranty

construction

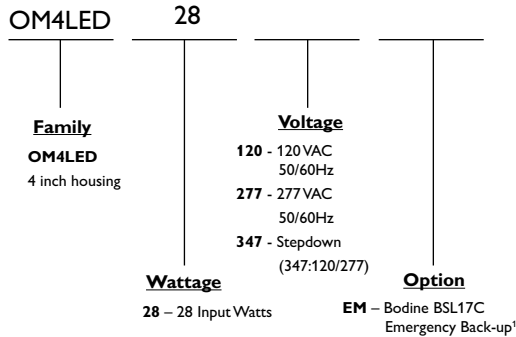
- Thermal Management: A proprietary die-cast aluminum heat sink allows for easy and tool less installation to the housing yoke. The heat sink is designed to properly maintain junction temperatures in recessed Non-IC applications to provide reliable performance over the life of the light engine. The heat sink incorporates alignment tabs to properly position with the housing. Rust resistant springs are used to secure the reflector to the light engine. Fixtures should not operated or exceed ambient temperature above 40°C.

Specifier's Reference

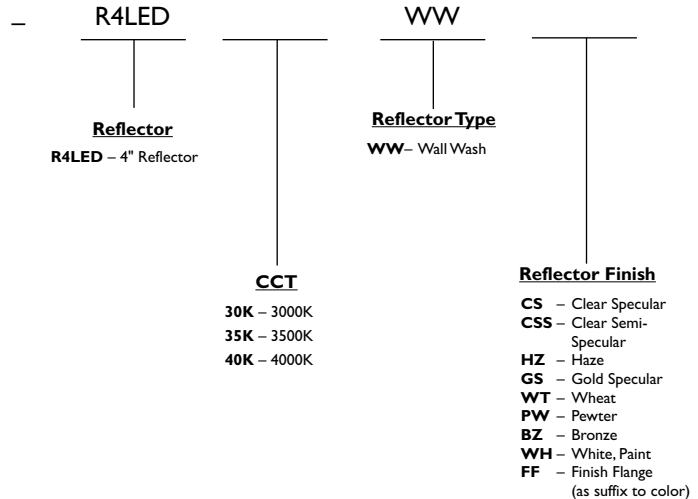
| |
|-----------|
| Project |
| Type |
| Model No. |
| Comments |

Green Choice: OM4LED28120-R4LED30KWWCS

HOUSING



LIGHT ENGINE - REFLECTOR



Footnotes

1. Delivered lumen output in emergency mode ranges from 500-550 lumens.

General Notes

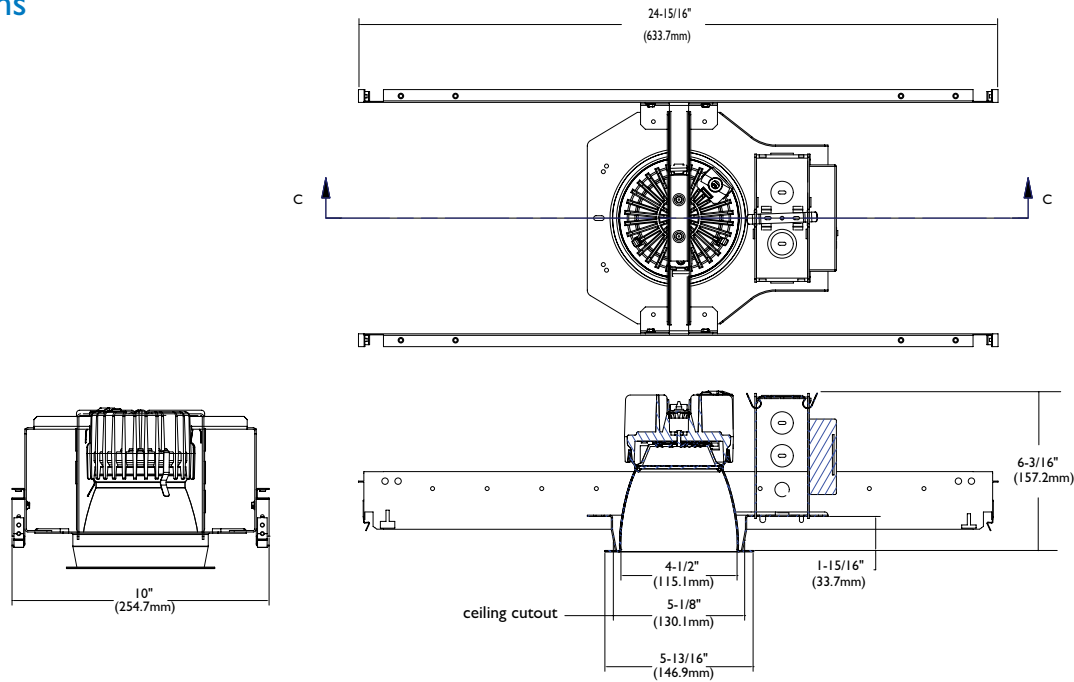
Lumen output varies depending on CCT. Refer to specific IES files for details.



energy data

| Input Voltage | Input Current | Drive Current | Input Power | LED Power | THD % | Power Factor |
|---------------|---------------|---------------|-------------|-----------|-------|--------------|
| 120 | 0.234 | 520mA | 28 | 25 | <10% | >0.9 |
| 277 | 0.101 | 520mA | 28 | 25 | <10% | >0.9 |

dimensions



photometrics

Consult factory for photometrics.



© 2013 Koninklijke Philips N.V. (Royal Philips). All rights reserved.
 Specifications are subject to change without notice.
www.philips.com/luminaires

Philips Lighting Company
 200 Franklin Square Drive
 Somerset, NJ 08873
 Phone: 855-486-2216

Philips Lighting Company
 281 Hillmount Road
 Markham ON, Canada L6C 2S3
 Phone: 800-668-9008