



SIXTH FORM BULLETIN

ISSUE 1

10 – 16 September

Welcome to the weekly bulletin!

Each week general sixth form information, careers advice, University information, fund raising news and much more is published in the Sixth Form Bulletin. A link to the bulletin is emailed to you so that you are aware of what is happening within the Sixth form community and beyond!

There are several ways teachers and sixth form staff can contact you to inform you of events, these are the bulletin, the notice boards around the sixth form, during registration and the TV screen in the Sixth form study area. Please ensure you check all these forms of communication regularly.

For people who want to study a performing arts related course at college or university.



Compose your future is an exhibition of over 60 exhibitors with live performances by current students, interactive and knowledge building workshops and practical demonstrations.

Come and find out what courses are available and what to expect on a performing arts degree.

<https://www.ucasevents.com/ucas/frontend/reg/thome.csp?pageID=541556&eventID=1225&eventID=1225>

For people who are interested in studying a design related course at college or university.



The Design your future events will offer visitors the unique opportunity to talk to representatives from universities and colleges and other organisations about the study prospects available to them within the creative arts and associated career avenues.

Features include over 90 exhibitors, workshops and demonstrations.

Subjects covered include: art, design, media, fashion, architecture, ceramics, 3D animation, mobile phone technology, multi media and much more.

<https://www.ucasevents.com/ucas/frontend/reg/thome.csp?pageID=571254&eventID=1279&eventID=1279>

Are you 16-17 years old? Try Before You Apply

STEM* experience courses at university for 16-17 year old students. For Year 12, Scottish S5 and Northern Ireland Year 13.

*Science, Technology, Engineering and Mathematics.



See posters in the Sixth Form Study area for further information and the courses available.



- Lockers were emptied at the end of last term. If you have items missing please visit Ms Jelfs' office and reclaim your property.
- A watch has been handed into the Sixth form office.
- An amount of money has been handed in, if it's yours please see Mrs Foster, explaining how much, when and where you lost it.
- A door key is waiting to be claimed.
- If you find anything around the Sixth Form area, please hand into the Sixth Form Office so we can return the item to it's rightful owner!

A prize pot of **£500** to be divided proportionately between winners and runners up

Christ's College Cambridge is pleased to invite entries for the 2015 History Essay Prize competition, open to all current Year 12 students. You don't have to be studying History or intend to take History at University to be eligible to enter.

The deadline for entries is Friday 10th January 2015. Essays must be word-processed, no more than 2,500 words in length and should include a bibliography. A coversheet completed by your school must accompany every entry. Essays will be marked by the end of January 2015 and winners will be invited to our Open Day on Tuesday 17th February 2015 for prize presentations.

To enter, write an essay of no more than 2,500 words on one of the following:

- Do acts of public commemoration distort historical understanding?
- Is gender history simply history with the men left out?
- Is the principal task of the historian to tell the truth?
- What can clothes tell us about the past that the written word cannot?

You should ask your school History or form teacher to complete a copy of the coversheet provided and send it with your essay to:

The Admissions Office, Christ's College, St Andrew's Street
Cambridge CB2 3BU no later than Friday 10th January 2015



Please see the coversheet as a pdf at the end of the bulletin

Careers. Universities. Volunteering. Work Opportunities

Heckmondwike Grammar School makes no recommendation for courses notified by external bodies. Please be aware that we do not endorse every event and we do not take responsibility for booking or travel arrangements.

We recommend that students make the necessary checks, before subscribing.

Don't forget to check the Careers Website for jobs and apprenticeship vacancies which are notified to school.

Newcastle University Partners Presentation 15 September 2014.

Year 13 students interested in applying to Newcastle University are advised to attend a meeting in Room 104, 12.45pm - 1.30pm on Monday 15 September. Qualifying criteria for Newcastle's access schemes will be fully explained by former HGS student Felicity Mortimer.

West Yorkshire Police Explorer programme 2015.

The Police Explorer programme 2015 has been launched and full details can be found at www.westyorkshire.police.uk/explorers. This programme is highly recommended for students wishing to join the Police service and provides the only current opportunity for Work Shadowing. The programme runs from January to July and successful applicants will be expected to attend each Wednesday evening. A number of HGS students have used this programme as a first step to a Police career, whilst one former student was chosen as West Yorkshire Explorer of the Year. Application forms can be collected from Mrs Morton and the closing date for applications is **Friday 24 October**.

Hospital placements - Apply 17 September 2014.

Students wishing to apply for a hospital placement are advised to email hannah.moorwood@midyorks.nhs.uk on **Wednesday 17 September**. Please email from your HGS account, asking for a place at the October briefing at Dewsbury Hospital. Please check your email regularly for a reply which will include a list of documents to take to the briefing session.

Leeds University Medical information sessions

Leeds University offer a Year 12 programme of free events to students interested in **Becoming a Dentist / Doctor / Psychologist / Nurse**. Please see further information at the end of this bulletin. Application forms are available from Mrs Morton. Please note the applications for Becoming a Dentist or Doctor must be received by Leeds University before **15 October** and applications for becoming a Nurse or Psychologist must be returned by **21 January**.

Placement Diaries Please!

Please return completed diaries for all summer placements to Mrs Morton as soon as possible so that certificates can be issued. Form tutors will need to see certificates when compiling your UCAS reference and some universities ask to see them as evidence of placements undertaken.

Music groups starting this week

Flute Group - Thursday : 12.50pm (room 20)

Senior Band - Thursday : 3.35pm - 4.30pm (Drama Studio)

Starting next week...

String Group & Senior Choir

Music Tuition...

Anyone wishing to have instrumental or vocal music tuition please download a form from the music dept website & return it to student services.

Any questions regarding musical activities please see Mr Cole



RETURN TO THE FORBIDDEN PLANET III



Look out for auditions for the whole school production of Return to the Forbidden Planet.



MONEY MATTERS



Students **MUST NOT** go into debt when buying food, you must ensure there is enough money in your account before entering the Dining Hall.

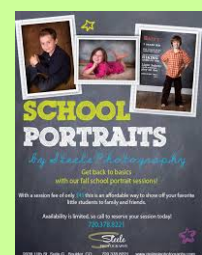


Over spending is not permitted and will not be tolerated.

The Business office is not equipped to give change to any students.

Please can students complete and return the Biometric consent form.

Please return your school photo order and money to the Business office by Friday 12 September at the very latest.



Accounting & Finance

CUG Rank		University Name	Entry Standards	Student Satisfaction		Research Assessment		Graduate Prospects		Overall Score	
2015	2014										
1	1	Bath	494	██████	4.50	██████	2.95	██████	88	██████	100.0
2	4	Strathclyde	524	██████	4.21	██████	2.85	██████	80	██████	96.7
3	2	LSE	521	██████	3.98	███	2.95	██████	83	██████	96.3
4	3	Warwick	509	██████	3.98	███	2.95	██████	83	██████	95.7
5	11	Lancaster	456	██████	4.30	██████	2.95	██████	79	██████	94.5
6	6	Glasgow	509	██████	4.20	██████	2.35	██████	87	██████	94.3
7	5	Leeds	440	██████	4.12	███	2.85	██████	83	██████	92.8
8	8	Exeter	458	██████	4.07	███	2.60	██████	87	██████	92.7
9	14	Durham	421	██████	4.26	██████	2.65	██████	84	██████	91.9
10	7	Loughborough	429	██████	4.16	██████	2.70	██████	84	██████	91.8

Business & Management Studies

G Rank		University Name	Entry Standards	Student Satisfaction		Research Assessment		Graduate Prospects		Overall Score	
2015	2014										
1	1	Cambridge				3.05	██████	78	██████	100.0	
2	2	Bath	464	██████	4.32	██████	2.95	██████	89	██████	99.9
3	3	St Andrews	539	██████	4.24	██████	2.65	██████	79	██████	98.9
4	4	London School of Economics	500	██████	3.98	███	2.95	██████	80	██████	97.5
5	5	Warwick	518	██████	3.76	███	2.95	██████	82	██████	97.3
6	20	Durham	452	██████	4.02	██████	2.65	██████	90	██████	96.4
7	7	Lancaster	442	██████	4.03	██████	2.95	██████	83	██████	96.2
8	6	Loughborough	415	██████	4.15	██████	2.70	██████	86	██████	95.1
9	11	Strathclyde	501	██████	4.07	██████	2.85	██████	68	██████	95.1
10	8	Exeter	447	██████	4.12	██████	2.65	██████	80	██████	94.8

Economics

CUG Rank		University Name	Entry Standards	Student Satisfaction		Research Assessment	Graduate Prospects	Overall Score			
2015	2014										
1	4	Cambridge	634		-		3.05		93		100.0
2	2	London School of Economics	576		3.97		3.55		87		93.9
3	3	Oxford	589		4.19		3.35		84		93.8
4	1	Warwick	567		4.09		3.35		89		93.8
5	5	University College London	556		3.93		3.50		85		92.5
6	10	Nottingham	506		4.00		3.15		82		89.3
7	6	Bristol	504		3.95		3.15		83		89.2
8	11	Bath	504		3.94		2.95		86		89.0
9	9	Durham	562		3.97		2.65		82		88.6
10	7	Exeter	481		4.07		2.95		83		88.3

Land & Property Management

CUG Rank		University Name	Entry Standards	Student Satisfaction		Research Assessment	Graduate Prospects	Overall Score			
2015	2014										
1	1	Cambridge				3.05		90		100.0	
2	2	Reading	386		3.99		2.70		95		97.4
3	6	Aberystwyth			3.99		2.50				92.8
4	3	Glasgow			3.73		2.70				92.4
5	5	Northumbria			3.96		2.45				92.3
6	9	Ulster			4.36		2.75		60		91.9
7	8	Sheffield Hallam	310		4.04		2.55		70		90.7
8	7	West of England, Bristol			3.80		2.34				90.6
9	10	Oxford Brookes			3.85		2.20				90.0
10	17	Nottingham Trent	293		4.26			85		88.9	



**St John's College Open Day
Saturday 20th September 2014**

Draft Programme
(Please note: this may be subject to change)

11.30 am	Registration <i>Central Hall, Divinity School</i>
12.00 pm	Welcome and Introduction to St John's Admissions and Applications Presentation <i>Dr Watson, Admissions Tutor</i> <i>Main Lecture Theatre, Divinity School</i>
12.30 pm	Admissions Q&A <i>Dr Watson, Admissions Tutor</i> <i>Main Lecture Theatre, Divinity School</i>
1.00 pm	Buffet Lunch <i>Central Hall, Divinity School</i>
1.45 pm	Tour of College
2.30 pm	Student Perspectives <i>Q&A with current students</i> <i>Main Lecture Theatre, Divinity School</i>
3.00 pm	Directors of Studies Sessions <i>Further information to follow regarding which Directors of Studies will be available during this session</i>
3.45 pm	Refreshments <i>Central Hall, Divinity School</i>
4.00 pm	Depart College

Cover Sheet for Christ's College History Essay Prize Competition

Please use a separate cover sheet for each essay. The work should be submitted to the Admissions Office, Christ's College, St Andrew's Street Cambridge CB2 3BU **no later than Friday 10th January 2015**.

Your essay must be all your own work, word-processed, no more than 2,500 words in length and should include a bibliography. Please note that it is **non-returnable**.

To be completed by the contestant and attached to the front of the essay

Family name	Forename(s)
School or college	
Title of essay	
I certify that this is my own word-processed essay of less than 2,500 words and that I have acknowledged material taken from other works.	
Signed Date	

To be completed by school/college representative

I certify that to the best of my knowledge this is the applicant's own work, and that the information given on this cover sheet is correct.
Signed Date
Position in school/college

All written work should be sent unstapled and unfolded direct to
The Admissions Secretary
Christ's College
St Andrew's Street
Cambridge CB2 3BU

Please imprint the school or college stamp in this box

Please enclose with your work a self-addressed stamped postcard or sealed down envelope. We will immediately return this to you as your receipt.

Do ensure that you pay the correct postage for an A4 envelope - it's a LARGE FIRST CLASS stamp. Failure to do this causes considerable delay.

For College Use Only

--



BSc BUSINESS

CORNWALL



**SCHOLARSHIPS
AVAILABLE**

WHY BSc BUSINESS?

The University of Exeter Business School's BSc Business is a career-focused business and management programme, with an ethos of ethics and sustainability, incorporating extensive work placements.

BSc Business, based at our Penryn Campus in Cornwall, is designed to address the challenges in growing businesses in the current climate changing era. We will help you develop a set of graduate skills and attributes which are hugely relevant to 21st century businesses, from a local and global perspective. This will prepare you for a professional career in a wide range of sectors including: e-commerce, marketing, manufacturing and/or wholesale, management relations, environmental consultancy or social enterprise.

You will put theory into practice by maximising the advantage of the unique Cornwall environment to provide a detailed understanding of the practical areas of Business and Management which will include volunteering, work-based practice and consultancy.

BUILDING BRILLIANT CAREERS

Extensive work placements

Throughout your study you will complete project work in business, including work placements with local and regional companies. In your final year you will be given a consultancy project with one of those companies, responding to a real world problem that they need your help to resolve. This work experience will ensure you acquire the skills and attributes relevant to modern businesses management. You will be challenged to develop both a local and global perspective and search out new business models.



WHAT WILL I STUDY?

Our curriculum is made up of a compulsory core together with specialist subjects, allowing you to choose modules that most interest you.

Over the three year BSc Business programme you will study all the subjects necessary to give you a classic Business degree. The first year of the programme will cover a variety of fundamental business management topics such as Business and Society, Accounting Principles, Theory and Practice of Management, Marketing Communications in the Digital Age and People, Wellbeing and Work.

As a second year student you will have the opportunity to practice your understanding of what you are learning through a work placement with local and regional companies. In your second and third year you will be able to add two further specialist modules unique to the Penryn Campus such as: Biodiversity and Conservation Biology, Climate Change and Society, Project Management, Small Business Management or Social and Technological Innovation, to create a more customised BSc Business degree. These along with your individual dissertation and practice-based consultancy project will equip you with specialist knowledge of key future-focused issues that will prove invaluable in the world of work.

This truly is an outstanding undergraduate experience in the study of Business in the UK.

Visit our website for the full programme structure: www.business-school.exeter.ac.uk/businessprogramme

SCHOLARSHIPS AVAILABLE

We are pleased to offer a number of £1,500 scholarships which will be awarded to help you with your study in your first year. To apply visit our website www.business-school.exeter.ac.uk/businessscholarship

WHY STUDY IN CORNWALL?

The University of Exeter's Penryn Campus offers the very latest academic, research and residential facilities and is made up of around 4,000 students providing a friendly and energetic atmosphere.

A new £5.5 million building is under construction on the Penryn Campus in Cornwall which will feature a specially designed area for business engagement called 'The Collaboratory'.

Our campus rates consistently in the Top 10 for student satisfaction.

As soon as I visited Penryn Campus on the Open Day I knew it was the perfect place for me to study. The buildings are set in beautiful grounds, the accommodation is spacious and good value, and everything you need is right on your doorstep.

The campus is really relaxed and laid back and there is a real sense of pride and ownership about how unique this campus is: there really is nowhere else that offers so many fantastic opportunities in such an amazing location.

**CHARLOTTE BARRY,
CURRENT STUDENT**

PROGRAMME INFORMATION

Course start date: September 2015

UCAS Code: N110

Duration: 3 years

How to apply:

www.exeter.ac.uk/undergraduate/applications

Scholarships: www.business-school.exeter.ac.uk/businessscholarship

Funding: www.exeter.ac.uk/studying/funding/

Fees:

www.exeter.ac.uk/undergraduate/money/fees/

Admissions:

Tel: 01326 371801

Email: cornwall@exeter.ac.uk

CONTACT US

Live webchats

Why not join one of our live webchats to find out more about the BSc Business programme?

A member of our Marketing and Admissions team will be available every Tuesday and Thursday between 2pm and 3pm to answer any questions you may have.

Visit our website to join the chat:

www.business-school.exeter.ac.uk/about/contact/webchats/

Sign up to our newsletter

Keep up to date with the latest news from the Business School by signing up to our monthly newsletter:

www.business-school.exeter.ac.uk/about/contact/newsletter/



@UofEBusiness



University of Exeter Business School

Programme Director:

Stephen Hickman

Tel: 01326 259280

Email: s.hickman@exeter.ac.uk

Open days at our Penryn Campus 2014



**SATURDAY 14 JUNE AND SATURDAY 27 SEPTEMBER,
PENRYN CAMPUS, NEAR FALMOUTH, CORNWALL**

Travelling to an Open Day from outside Cornwall? You can claim £75 towards your travel costs.

Come and visit an exceptional Russell Group university, ranked in the world's top one per cent, combining world-class research, major recent investment and very high levels of student satisfaction. At our Penryn Campus you can study:

- Animal Behaviour
- Business
- Conservation Biology and Ecology
- Energy Engineering
- English
- Environmental Science
- Evolutionary Biology
- Flexible Combined Honours
- Geography
- Geology
- History
- Human Sciences
- Marine Biology
- Mathematics and the Environment
- Mining Engineering
- Politics and International Relations
- Renewable Energy
- Zoology

Penryn Campus is unique. In terms of the variety of opportunities on offer, the relaxed yet creative atmosphere, the encouragement from all departments and services, and the sense of knowing everyone, it's a community of incredible activity in a truly beautiful location.

JOAN PASSEY, BA ENGLISH

Book your place now:

www.exeter.ac.uk/penryncampus/opendays

For further information about programmes at the Penryn Campus contact us on:

+44 (0) 1326 371801 www.exeter.ac.uk/cornwall



Find us using 'University of Exeter Penryn Campus'.



The Penryn Campus is a Combined Universities in Cornwall initiative and part-funded by the EU Regional Development Fund.

To view this email online, @link@

Faculty of Medicine and Health



UNIVERSITY OF LEEDS

Becoming a... series of events 2014/15

The Health Sciences Education Outreach team is proud to present the Y12 programme for the 2014/15 academic year.

These **free** Wednesday afternoon events are for West Yorkshire Year 12 and mature students seriously considering a career in one of these professions. In allocating places, priority will be given to students from groups that are under-represented in these professions provided they also demonstrate the potential to benefit from university study. You must be studying or living in West Yorkshire or registered with Reach for Excellence or Realising Opportunities. Booking is essential.

These events are as follows:

Becoming a Dentist

Wednesday 29th October 2014

Becoming a Psychologist

Wednesday 4th February 2015

Becoming a Doctor

Wednesday 26th November 2014

Becoming a Nurse

Wednesday 25th February 2015

At each event you will hear talks from academic, clinical and admissions staff members as well as current students. The four events are different. Each one provides information and advice relevant to a particular programme and profession. They will all take place at the University of Leeds.

- * Insight into the professional role
- * Insight into the training involved
- * Choosing where to apply
- * Financing your studies

- * Strengthening your application
- * The personal statement
- * Admissions tests and interviews
- * Work experience

How to apply

If you are interested in attending one or more of these events please complete the application form. Make sure you include completed application form(s) with the 2 necessary signatures, a valid email address (clearly written) that you check regularly and return it (signed by your parent/carer and by one of your teachers) to:

Teresa Storey, 1.17 Baines Wing, University of Leeds, LS2 9JT.

Application forms can be downloaded at: <http://medhealth.leeds.ac.uk/wp>

For the **Becoming a Dentist** and **Doctor** events, you must **apply by 15th October** using

the form provided. We will email by Wednesday 22nd October to tell you whether or not you have a place.

For the **Becoming a Nurse** and **Psychologist** events, you must **apply by 21st January 2015**

using the form provided. We will email by Wednesday 27th January to tell you whether or not you have a place.

Comments made at previous events

"...excellent information, great ways of explaining and giving different ways of work experience and different ways of giving presentations eg, video"

"...thoroughly enjoyed the event and got some extra background knowledge. Would recommend to others!"

"I found today very useful, everything was explained so well I did not have to ask any questions"

Please note that this email may not display correctly if you haven't downloaded the images

University of Leeds - LS2 9JT
[Copyright and Legal](#) | [Accessibility](#) | [Privacy](#) | [Freedom of information](#)
Copyright 2009 University of Leeds

Forward this email
to a friend ▶



This message was sent to by [The University of Leeds](#) using [newzapp_email_marketing](#). Follow this link to [Unsubscribe](#).