

# LONGWOOD

## MEN'S BASKETBALL

# 23

### vs. Presbyterian

Wednesday, January 28, 2015 • 7 p.m.

Clinton, SC. • Templeton Center (2,000)

Big South Network • WVHL 92.9 FM • WHAP 1340 AM

#### 2014-15 Schedule

N 8	HAMPDEN-SYDNEY (Exh.)	W	95-60
N 14	AVERETT	W	79-53
N 19	at James Madison	L	82-60
N 21	vs. UNC Greensboro#	W	81-79 (OT)
N 22	vs. Youngstown State#	L	82-72
N 23	at Eastern Michigan#	L	79-48
N 26	at George Washington	L	91-66
N 29	at Iowa	L	77-44

D 3	DARTMOUTH	W	74-73
D 6	UT MARTIN	L	77-67
D 14	at UMBC	L	58-53
D 17	at Miami (OH)	L	71-60
D 20	PENN STATE BEAVER	W	106-74
D 28	at Ball State	L	69-64
D 31	at Winthrop*	L	82-72 (OT)

J 3	RADFORD*	W	90-79 (20T)
J 8	at Coastal Carolina*	L	76-70
J 10	at Charleston Southern*	L	68-54
J 14	PRESBYTERIAN*	L	71-67
J 17	LIBERTY*	W	85-71
J 19	at High Point*	L	72-67
J 22	at Gardner-Webb*	L	79-67
J 28	UNC ASHEVILLE*	L	74-64

**J 31 Presbyterian** 7 p.m.  
Clinton, S.C. (Templeton Center)

F 3	GARDNER-WEBB*	7 p.m.
F 6	at UNC Asheville*	7 p.m.
F 11	at Radford*	5 p.m.
F 14	CHARLESTON SOUTHERN*	5 p.m.
F 17	at Liberty*	7 p.m.
F 21	WINTHROP*	5 p.m.
F 23	COASTAL CAROLINA*	7 p.m.
F 28	CAMPBELL*	2 p.m.

M 3-8 Big South Tournament TBA

Home games in BOLD CAPS  
# EMU Showcase Tournament (Ypsilanti, Mich.)  
\* Big South game  
All times eastern and subject to change

#### THE MATCHUP

**Longwood**  
**LANCERS**



Farmville, Va.

**Presbyterian**  
**BLUE HOSE**



Clinton, S.C.

**2014-15 Record**.....6-16 (2-7 Big South)  
**Conference**..... Big South  
**Last Game**.....L, 74-64, vs. UNC Asheville (1/29)

**Head Coach**.....Jayson Gee (Charleston, '88)  
**Career Record**.....175-96 (Ninth Season)  
**Longwood Record**.....15-41 (Second Season)  
**Gee vs. Presbyterian**.....0-2

**2014-15 Record**.....7-15 (3-6 Big South)  
**Conference**..... Big South  
**Last Game**.....L, 63-54, High Point (1/26)

**Head Coach**.....Gregg Nibert (Marietta, '75)  
**Career Record**.....398-372 (26th Season)  
**UNCA Record**.....398-372 (26th Season)  
**Nibert vs. Longwood**.....2-0

#### THE OPENING TIP

- Longwood and Presbyterian square off for the second time this season in a rematch of a barnburner Presbyterian won, 71-67, in Farmville on Jan. 14.
- Presbyterian will be the first Big South foe Longwood has faced twice this season.
- In the last meeting between Longwood and Presbyterian, Longwood's **Quincy Taylor** shot 5-of-9 from three-point range and scored 23 points.
- Longwood is the second-leading three-point shooting team in the Big South, shooting a 36.6 percent (174-of-476) this season. Guards **Quincy Taylor** and **Ryan Badowski** combine to shoot 45.1 percent (100-of-222) from beyond the arc.
- Center **Lotanna Nwogbo** (12.9 ppg., 8.2 rpg.) will miss 4-6 weeks after undergoing surgery Jan. 16 to repair a torn thumb ligament. Nwogbo started the first 17 games of the season before suffering the injury on Jan. 10 at Charleston Southern.

#### LAST TIME OUT

- UNC Asheville's Andrew Rowsey and Jaleel Roberts combined for 38 points on 13-of-22 shooting to lead the Bulldogs past Longwood, 74-64, in Farmville.
- Rowsey poured in 24 points to tie for the most points by an opposing player in Willett Hall this season, while Roberts scored 14 points with six rebounds in just 16 minutes of play.
- Rowsey and Roberts did enough to withstand 25 points from Longwood point guard **Quincy Taylor**, who scored 20-plus for the third straight home game. Taylor paced Longwood with 3-of-6 shooting from three-point range and a career-best 8-of-10 from the free throw line.
- Presbyterian outrebounded Longwood 49-32 for the Lancers' largest rebounding deficit of the season. The Blue Hose scored 13 points on second-chance opportunities.

#### THE OPENING TIP

No.	Name (Ht., Wt., Yr.)	Pos.	PPG	RPG	APG	Notables
0	Tra'Vaughn White (5-10, 190, Jr.)	G	--	--	--	Will sit out 2014-15 season due to NCAA transfer rules
1	Leron Fisher (5-11, 160, Jr.)	G	8.9	2.4	2.3	10-plus points in 7 of past 8 games
2	Bryan Gee (6-0, 175, Fr.)	G	--	--	--	Will redshirt 2014-15 season
3	• Darrion Allen (6-2, 165, So.)	G	5.5	2.5	1.0	Two 20-point games this season
4	Khrist Lane (6-6, 225, So.)	F	--	--	--	Will sit out 2014-15 season due to NCAA transfer rules
10	Lotanna Nwogbo (6-8, 255, R-Jr.)	C	12.9	8.2	0.4	Out 4-6 weeks following thumb surgery
11	Kanayo Obi-Rapu (6-3, 190, Fr.)	G	4.2	2.3	0.9	At least one 3-ptr in eight consecutive games
14	Victor Dorsey (6-9, 200, Fr.)	F	1.7	1.9	0.1	8.4 rebounds per 40 minutes (2nd on team)
15	Isaac Belton (6-4, 205, So.)	G	1.8	0.5	0.2	Season-high 8 pts, 4-of-8 FG vs. Penn State Beaver
21	• Shaquille Johnson (6-5, 220, Jr.)	G/F	13.1	4.6	3.2	3+ assists in 15 of 20 games
23	• Ryan Badowski (6-3, 185, Fr.)	G	9.3	3.0	0.5	Big South's leading freshman scorer
24	• Damarion Geter (6-7, 215, So.)	F	1.9	4.4	1.5	3.0 FGA last 5 games (1.0 FGA in 17 games prior)
25	• Quincy Taylor (6-0, 180, R-Sr.)	G	16.6	2.8	2.5	Double-figure scoring in 16 of 19 games
30	Tyler Akers (6-4, 180, Sr.)	G	0.7	0.3	0.	Elected team captain as a senior

• denotes projected starter

#### BROADCAST INFO

##### Big South Network

www.BigSouthSports.com/schedule

##### WVHL Kickin' Country 92.9 FM

92.9 FM (Farmville, Va.)

www.WVHL.net

##### WHAP 1340 AM

1340 AM (Richmond, Va. / Hopewell, Va.)

**Longwood at Presbyterian • Jan. 30, 2015 • Clinton, S.C. (Templeton Center)**

## Media Information

### MEDIA CONTACTS

*Chris Cook*

*Assistant VP/Athletics Communications*

**Email:** cookcc@longwood.edu

**Office:** 434-395-2718

**Cell:** 434-808-5127

*Todd Lindenmuth*

*Athletics Communications Manager*

**Email:** lindenmuthwt@longwood.edu

**Office:** 434-395-4802

**Cell:** 919-724-8161

*Jacob Bell*

*External Relations Assistant*

**Email:** belljd@longwood.edu

**Office:** 434-395-4802

**Cell:** 615-424-6743

### INTERVIEW REQUESTS

All interview requests for Longwood men's basketball players and coaches will run through the Longwood athletics communications office. Contact Chris Cook or Jacob Bell to set up interviews.

### GAME BROADCASTS

All Longwood men's basketball games air live on WVHL 92.9 FM Kickin' Country in Farmville, online at www.WVHL.net and on the TuneIn Radio app. Select games stream on a free, live video broadcast on the Big South Network, available at www.bigsouthsports.com/schedule. Scott Bacon, the voice of the Lancers, carries radio broadcasts on WVHL, while Jacob Bell and Richard LeSueur handle commentary on the Big South Network. All Big South games also air on WHAP 1340 AM in Hopewell, Va.

### LONGWOODLANCERS.COM

For unparalleled coverage of the entire intercollegiate athletics department at Longwood, access LongwoodLancers.com. The official site of Longwood athletics features in-depth coverage of Longwood players, coaches and staff as well as game notes, player biographies, statistics and updates on the Longwood men's basketball program.

### GAMEDAY CREDENTIALS

Credentials to Longwood basketball home games are available upon request through the Longwood athletics communications department. Credentials are issued at the discretion of the Longwood athletics department and may be revoked at any point due to inappropriate behavior, inappropriate use of the credential, non-sanctioned transfer of the credential or other reasons deemed worthy of credential revocation by the department.

### PRACTICE AVAILABILITY

All Longwood men's basketball practices are closed to the media and general public unless otherwise granted permission by Longwood head coach Jayson Gee or the Longwood athletics communications office. To request access to a Longwood basketball practice for the purpose of media coverage, contact the Longwood athletics communications office.

## BY THE NUMBERS

- Point guard **Quincy Taylor** is on pace to break Longwood's single-season three-point shooting percentage record. Taylor sits atop the list with a .505 (51-of-101) clip and would be the first Lancer to shoot higher than .470 in a season.
- Taylor's .505 three-point percentage ranks third nationally and first in the Big South.
- The Lancers lead the Big South with 339 forced turnovers this season and average 15.4 points off turnovers per game. Longwood also leads the league with 174 steals, thanks in part to guard **Leron Fisher's** conference-best 43 steals.
- Freshman guard **Ryan Badowski** was held scoreless last game against UNC Asheville, only the second scoreless game of his career. The last time Badowski did not score in a game, he responded by scoring in double figures in four of his next five games and averaged 14.2 points per game during that stretch.
- Junior forward **Shaquille Johnson** (13.1 rpg., 3.3 apg.) is one of only six Big South players averaging at least 3.0 assists and 10.0 points per game.
- Freshman forward **Victor Dorsey** has played 10-plus minutes in five consecutive games. His increase in playing time coincides with the absence of injured center **Lotanna Nwogbo**. Dorsey had played more than 10 minutes in just one of his first 11 games before Nwogbo went down on Jan. 10.
- Dorsey averages 8.4 rebounds per 40 minutes, the second-highest average on the team behind only Nwogbo (10.9).
- Junior guard **Leron Fisher** has scored in double figures in seven of his past eight games and is averaging 14.6 points per game during that stretch. Fisher scored in double figures in just one of his first 14 games and averaged 5.3 points per game during that span.
- Freshman guard **Kanayo Obi-Rapu** has hit a three-pointer in eight consecutive games and is shooting .500 (11-of-22) from three-point range during that stretch.

## Statistics Comparison

	LUW	PC
Points	68.6	62.0
Opp. Points	74.4	69.7
Rebounds	32.5	31.8
Opp. Rebounds	36.7	33.1
Def. Rebounds	22.2	22.8
Opp. Def. Rebounds	24.9	21.7
Off. Rebounds	10.3	9.0
Opp. Off. Rebounds	11.9	11.4
Field Goal Pct.	.430	.459
Opp. Field Goal Pct.	.462	.443
3-Point Pct.	.366	.318
Opp. 3-Point Pct.	.365	.388
3-Point FGs	8.0	4.1
Opp. 3-Point FGs	7.0	9.1
Free Throw Pct.	.707	.671
Opp. Free Throw Pct.	.683	.689
Free Throws Made	11.7	10.1
Opp. Free Throws Made	17.3	11.1
Personal Fouls	20.5	15.9
Assists	11.7	10.6
Turnovers	15.6	13.3
Opp. Turnovers	15.4	13.3
Blocked Shots	2.8	2.9
Steals	7.9	2.9

## LONGWOOD MBB QUICK FACTS

### UNIVERSITY

Name ..... Longwood University  
 City/Zip ..... Farmville, Va. 23909  
 Founded ..... 1839  
 Enrollment (Undergraduate) ..... 4,507  
 Nickname ..... Lancers  
 Mascot ..... Elwood  
 Colors ..... Navy Blue (PMS 282) & White  
 Fight Song ..... Hail to Longwood U!  
 Affiliation ..... NCAA Division I  
 Conference ..... Big South  
 President ..... W. Taylor Reveley IV (Princeton)  
 Director of Athletics ..... Troy Austin (Duke)  
 Athletics Phone ..... (434) 395-2057  
 Tickets Phone ..... (434) 395-2138  
 Website ..... www.LongwoodLancers.com  
 Twitter ..... @LongwoodLancers

### PROGRAM HISTORY

Seasons of Basketball ..... 39  
 First Season ..... 1976-77  
 All-Time Record ..... 502-583  
 Division I Eligible ..... 2007-Present  
     Division I Record ..... 83-158 (8)  
     First Season D-I Schedule ..... 2004-05  
     Reclassifying D-I Record ..... 20-72 (3)  
 Division II Eligible ..... 1980-2004  
     Division II Record ..... 342-317 (24)  
     Division II Tournament App. .... 3  
     Division II Tournament Record ..... 2-4  
 Division III Eligible ..... 1976-80  
     Division III Record ..... 57-36 (4)  
     Division III Tournament App. .... 1  
     Division III Tournament Record ..... 3-2

### TEAM INFORMATION

2014-15 Overall Record ..... 6-16  
 Big South Record / Standing ..... 2-7 / T-9th  
 Home Record ..... 5-3  
 Away Record ..... 0-12  
 Neutral Record ..... 1-1  
 Starters Returning/Lost ..... 1/4  
 Letterwinners R/L ..... 5/5  
 Newcomers ..... 9 (3 eligible transfers)  
 Ineligible Transfers ..... 2 (will sit out 2014-15 season)

## Series History

<b>All-Time Record vs. Presbyterian</b>	0-3
<b>Under Coach Gee</b>	0-2
<b>Current Streak</b>	Presbyterian, W3
<b>First Meeting</b>	PC 82, LWU 71 (Jan. 26, 2013)
<b>Last Meeting</b>	PC 71, LWU 67 (Jan. 14, 2015)

### Notes

- Presbyterian took the first meeting this season, 71-67, behind freshman DeSean Murray's 18 points, 12 rebounds and eight assists and William Truss' 16 points and 11 rebounds. The effort came in Longwood's first full game without center Lotanna Nwogbo, who suffered a thumb injury in the game prior.
- Longwood and Presbyterian are the two newest members of the Big South. Presbyterian joined the league in 2007, and Longwood joined in 2012.
- The Longwood-Presbyterian series began with Longwood's membership in the Big South.

## GEE IN MIDST OF SECOND REBUILDING PROJECT

- Second-year head coach **Jayson Gee** boasts a coaching resume that includes successful rebuilding projects at the University of Charleston (W.Va.) and Cleveland State.
- Gee, a 25-year coaching veteran, owns a career record of 175-95 as a head coach. He has taken programs to six NCAA Tournaments, including four consecutive trips as the head coach at Charleston from 1999-2002 and again as the associate head coach at Cleveland State in 2009.
- At Charleston, Gee took over a program that had endured four consecutive sub-.500 seasons. By his second year (1997-98), he began a streak of seven straight 20-win seasons. By year three, Charleston won the WVIAC Tournament title.
- At Cleveland State, Gee came in as an associate head coach of a team that had five straight losing seasons. In year two (2007-08), Cleveland State won 21 games and played in the NIT. By year three, Cleveland State captured the Horizon League title and played in the NCAA Tournament after defeating Butler in the championship game.

## LONGWOOD NAMES FOUR CAPTAINS

- Longwood voted redshirt senior **Quincy Taylor**, senior **Tyler Akers**, redshirt junior **Lotanna Nwogbo** and sophomore **Damarion Geter** team captains for the 2014-15 season. All four are in their second year as members of the Lancer program. Nwogbo and Taylor sat out the 2013-14 season together due to NCAA transfer rules.

## GEE-FENSE CREATES TURNOVERS

- Head coach **Jayson Gee**'s emphasis on aggressive defense has turned Longwood into the Big South leader in forced turnovers and steals. The Lancers have forced 339 turnovers at an average of 15.4 per game and average 15.4 points per game off turnovers. A conference-leading 174 of those turnovers have been caused by Longwood steals.
- The Lancers are 4-1 when forcing at least 20 turnovers in a game this season.
- Junior point guard **Leron Fisher** leads the Big South with 43 steals. Fisher ranked tied for second in that category last season.

### 2014-15 • Big South • Forced Turnovers

Rk	Team	TO
1.	Longwood	339
2.	High Point	303
3.	Winthrop	286
4.	Radford	279
5.	UNC Asheville	278

### 2014-15 • Big South • Steals

Rk	Team	ST
1.	Longwood	174
2.	Campbell	160
3.	UNC Asheville	157
4.	Coastal Carolina	154
5.	Radford	151

Through games on Jan. 30, 2015

## THE BIG THREE

- Prior to redshirt junior center **Lotanna Nwogbo** going down with a thumb injury, Longwood had the third-most productive scoring trio in the Big South. Taylor (16.4 ppg.), Nwogbo (12.9) and Johnson (12.4) combined to average 41.7 points per game, the third-highest among any three-player tandems in the league.
- The two remaining members of Longwood's Big Three – **Quincy Taylor** (16.2 ppg.) and **Shaquille Johnson** (13.3) – combine for 29.7 points per game, tied for the fifth-highest scoring average of any duo in the Big South.
- Johnson, Nwogbo and Taylor were brought in by second-year head coach **Jayson Gee** as transfers. Taylor, a redshirt-senior from UAB, and Nwogbo, a redshirt junior from Tulane, joined the Longwood program prior to 2013-14 and sat out last season due to NCAA transfer rules. Johnson, a junior from Auburn and Northwest Florida Community College, is new to the program this season.
- Longwood is one of only two Big South teams with three players averaging 12.0 points or more.
- Either Johnson, Nwogbo or Taylor have led Longwood in points in 17 of 22 games.

### 2014-15 • Big South • Scoring Duos

Rk	Name	School	PPG
1.	PRESBYTERIAN:		
	J. Downing (17.1), D. Murray (16.6)		33.7
2.	CHARLESTON SOUTHERN:		
	S. Nimley (20.1), W. Saunders (12.7)		32.8
3.	GARDNER-WEBB:		
	J. Hill (18.8), T. Nelson (13.1)		31.9
4.	UNC ASHEVILLE:		
	A. Rowsey (19.0), D. Robertson (11.5)		30.5
5.	LONGWOOD:		
	Q. Taylor (16.6), S. Johnson (13.1)		29.7
	WINTHROP:		
	K. Moore (18.0), K. Johnson (11.7)		29.7
7.	HIGH POINT:		
	J. Brown (18.0), D. Wallace (11.0)		29.0
8.	RADFORD:		
	J. Green (15.2), R. Price (13.0)		28.2
9.	COASTAL CAROLINA:		
	J. Cameron (13.4), W. Gillis (12.7)		26.1
10.	CAMPBELL:		
	D. Mason (12.6), R. McCarter (11.1)		23.7
11.	LIBERTY:		
	D. Andoh (9.5), A. Smith (8.1)		17.6

### 2014-15 • Big South • Points Per Game

Rk	Name	School	PPG
1.	Saah Nimley	Charleston Southern	20.1
2.	Andrew Rowsey	UNC Asheville	19.0
3.	Jerome Hill	Gardner-Webb	18.8
4.	John Brown	High Point	18.0
	Keon Moore	Winthrop	18.0
6.	Jordan Downing	Presbyterian	17.1
7.	Quincy Taylor	Longwood	16.6
8.	Javonte Green	Radford	15.2
9.	Josh Cameron	Coastal Carolina	13.4
10.	Shaquille Johnson	Longwood	13.1
	Tyrell Nelson	Gardner-Webb	13.1
12.	R.J. Price	Radford	13.0
13.	Lotanna Nwogbo	Longwood	12.9
14.	Will Saunders	Charleston Southern	12.7
	Warren Gillis	Coastal Carolina	12.7
	Arlon Harper	Charleston Southern	12.7

Through games on Jan. 30, 2015

## Miscellaneous Stats

( ) – represents Longwood record in those games

### DOUBLE-FIGURE SCORING GAMES

Player	'14-15	Career
Quincy Taylor	17 (4-13)	28
Shaquille Johnson	15 (5-10)	18
Leron Fisher	8 (3-5)	17
Lotanna Nwogbo	12 (4-8)	12
Darrion Allen	2 (1-1)	9
Ryan Badowski	8 (5-3)	8
Kanayo Obi-Rapu	2 (0-2)	2
Isaac Belton	0 (0-0)	1

### 20+ POINTS

Player	'14-15	Career
Quincy Taylor	6 (2-4)	6
Darrion Allen	2 (1-1)	2
Ryan Badowski	2 (2-0)	2
Leron Fisher	2 (1-1)	2
Shaquille Johnson	2 (2-0)	2
Lotanna Nwogbo	2 (0-2)	2

### 30+ POINTS

Player	'14-15	Career
Shaquille Johnson	1 (1-0)	1
Quincy Taylor	1 (1-0)	1

### DOUBLE-DOUBLES

Player	'14-15	Career
Lotanna Nwogbo	5 (2-3)	5

### 10+ REBOUNDS

Player	'14-15	Career
Lotanna Nwogbo	6 (2-4)	6

### 3+ ASSISTS

Player	'14-15	Career
Quincy Taylor	8 (4-4)	44
Shaquille Johnson	16 (5-11)	23
Leron Fisher	11 (3-8)	22
Damarion Geter	5 (3-2)	7
Darrion Allen	1 (1-0)	3
Kanayo Obi-Rapu	2 (1-1)	1

### 3+ STEALS

Player	'14-15	Career
Leron Fisher	9 (3-6)	16
Quincy Taylor	4 (1-3)	11
Shaquille Johnson	2 (1-1)	2
Kanayo Obi-Rapu	1 (1-0)	1
Isaac Belton	0 (0-0)	1

### 3+ THREE-POINTERS

Player	'14-15	Career
Quincy Taylor	9 (2-7)	19
Ryan Badowski	9 (5-4)	9
Shaquille Johnson	3 (1-2)	3
Leron Fisher	1 (0-1)	3
Kanayo Obi-Rapu	2 (0-2)	2
Darrion Allen	1 (1-0)	1

### LEADING SCORER

Player	'14-15	Career
Quincy Taylor	8 (1-7)	9
Shaquille Johnson	6 (2-4)	7
Lotanna Nwogbo	5 (0-5)	5
Darrion Allen	2 (1-1)	2
Leron Fisher	2 (1-1)	2
Ryan Badowski	1 (1-0)	1
Isaac Belton	0 (0-0)	1

### LEADING REBOUNDER

Player	'14-15	Career
Lotanna Nwogbo	14 (3-11)	14
Damarion Geter	5 (1-4)	11
Shaquille Johnson	6 (1-5)	9
Victor Dorsey	1 (0-0)	1
Ryan Badowski	1 (0-1)	1
Isaac Belton	0 (0-0)	1

### ASSISTS LEADER

Player	'14-15	Career
Quincy Taylor	6 (2-4)	35
Shaquille Johnson	9 (3-6)	13
Leron Fisher	9 (2-7)	11
Damarion Geter	4 (3-1)	4
Kanayo Obi-Rapu	3 (1-2)	3

## TAYLOR IN CONTENTION FOR BIG SOUTH PLAYER OF THE YEAR

- Point guard **Quincy Taylor** transferred to Longwood from UAB prior to 2013-14 and has emerged as a candidate for Big South Player of the Year.
- Taylor leads the Big South in minutes per game (35.1) and three-point percentage (.505, 51-of-101), ranks seventh in scoring (16.6), eighth in field goal percentage (.424, 111-of-262) and tied for fifth with 5.8 made field goals per game.
- Taylor ranks third nationally in three-point percentage with a .505 (51-of-101) clip from long range that would break Longwood's Division I record.
- Taylor recently snapped a streak of 15 consecutive double-figure scoring games that was the longest in the Big South. He has scored in double figures in 17 of his 19 games this season.
- Taylor's six 20-point games rank tied for sixth in the Big South.
- Taylor is one of three Big South players averaging at least 15.0 points and 2.5 assists per game.

### 2014-15 • NCAA • 3-Pt. Field Goal Percentage

Rk	Name	School	3FG Pct. (FG-A)
1.	Corey Hawkins	UC Davis	.527 (58-110)
2.	Joey Ptasinski	Lafayette	.510 (53-104)
3.	<b>Quincy Taylor</b>	<b>Longwood</b>	<b>.505 (51-101)</b>
4.	Tyler Harvey	Eastern Mich.	.486 (88-181)
5.	Ameen Tanksley	Hofstra	.471 (57-121)

### 2014-15 • Big South • 15.0 PPG. & 2.5 APG.

Rk	Name	School	APG	PPG
	Saah Nimley	Charleston So.	4.5	20.1
	Andrew Rowsey	UNC Asheville	3.4	18.9
	<b>Quincy Taylor</b>	<b>Longwood</b>	<b>2.5</b>	<b>16.6</b>

### 2014-15 • Big South • Minutes Per Game

Rk	Name	School	MPG
1.	<b>Quincy Taylor</b>	<b>Longwood</b>	<b>35.1</b>
2.	Saah Nimley	Charleston Southern	34.1
3.	Tyler Strange	Gardner-Webb	32.6
4.	Shivaughn Wiggins	Coastal Carolina	32.4
	Keon Moore	Winthrop	32.4

### 2014-15 • Big South • Field Goals Per Game

Rk	Name	School	FG/Gm
1.	John Brown	High Point	7.5
2.	Jerome Hill	Gardner-Webb	6.5
3.	Jordan Downing	Presbyterian	6.2
4.	Keon Moore	Winthrop	5.9
5.	<b>Quincy Taylor</b>	<b>Longwood</b>	<b>5.8</b>
	Andrew Rowsey	UNC Asheville	5.8
	Saah Nimley	Charleston Southern	5.8
8.	Tyrell Nelson	Gardner-Webb	5.5
9.	Javonte Green	Radford	5.3
10.	<b>Shaquille Johnson</b>	<b>Longwood</b>	<b>5.2</b>
11.	D.J. Mason	Campbell	5.1
12.	<b>Lotanna Nwogbo</b>	<b>Longwood</b>	<b>4.9</b>
13.	Warren Gillis	Coastal Carolina	4.6
14.	William Truss	Presbyterian	4.4
15.	Arlon Harper	Charleston Southern	4.3

### 2014-15 • Big South • Points In A Game

Rk	Name	School	Pts.	Opp.
1.	<b>Saah Nimley</b>	<b>Charleston So.</b>	<b>37</b>	<b>Gardner-Webb</b>
2.	<b>Quincy Taylor</b>	<b>Longwood</b>	<b>34</b>	<b>Dartmouth</b>
	Andrew Rowsey	UNC Asheville	34	Chas. So.
4.	John Brown	High Point	33	Winthrop
5.	Jerome Hill	Gardner-Webb	32	Brevard
	Devante Wallace	High Point	32	Cal St.-BAK

Through games on Jan. 30, 2015

## JOHNSON A DUAL THREAT

- Junior **Shaquille Johnson** ranks among the Big South's top 10 in points per game (t-10th, 13.1 ppg.), field goal percentage (8th, .418 – minimum 5.0 made FG per game), assists (7th, 3.2 apg.) and assist-to-turnover ratio (8th, 0.87).
- Johnson is one of six Big South players averaging more than 10.0 points and 3.0 assists per game. At 6-5, he is one of only two league players over 6-4 averaging more than 3.0 assists per game.
- Johnson has recorded three or more assists in 16 of his 21 games this season and has led Longwood in assists a team-high eight times. He has scored in double figures 15 times, the second most on the team.
- Johnson was a top-100 recruit coming out of Milton High School in Atlanta, Ga., and began his collegiate career at Auburn.

### 2014-15 • Big South • Assists Per Game

Rk	Name	School	APG
1.	Tyler Strange	Gardner-Webb	7.4
2.	Andre Smith	Winthrop	4.6
3.	Saah Nimley	Charleston Southern	4.5
4.	Rashun Davis	Radford	4.4
5.	Shivaughn Wiggins	Coastal Carolina	3.7
6.	Andrew Rowsey	UNC Asheville	3.4
7.	<b>Shaquille Johnson</b>	<b>Longwood</b>	<b>3.2</b>
	Haiishen McIntyre	High Point	3.2
9	Warren Gillis	Coastal Carolina	3.0
10	2 players tied at		2.8

### 2014-15 • Big South • 10.0 PPG. & 3.0 APG.

Rk	Name	School	APG	PPG
	Saah Nimley	Charleston So.	4.5	20.1
	Andrew Rowsey	UNC Asheville	3.4	18.9
	<b>Shaquille Johnson</b>	<b>Longwood</b>	<b>3.2</b>	<b>13.1</b>
	Warren Gillis	Coastal Carolina	3.0	12.7
	Andre Smith	Winthrop	4.6	10.6
	Shivaughn Wiggins	Coastal Carolina	3.7	11.0

Through games on Jan. 30, 2015

## FISHER EMERGING INTO OFFENSIVE THREAT

- Junior **Leron Fisher** has played his best basketball of late, scoring in double figures in seven of his past eight games. Fisher scored in double figures in just one of 14 games prior to that stretch.
- Fisher has two 20-point games during that stretch, including a 26-point effort against Radford and a 25-point game against Gardner-Webb.
- The 5-11, 160-pound junior leads the Big South with 43 steals this season and ranks sixth with a .783 (65-of-83) free throw percentage.
- Fisher has at least one steal in 14 straight games. He has multiple steals in six straight games.
- Fisher has been one of Longwood's top on-ball defenders since joining the program last season. He ranked tied for second in the league in steals per game with 1.7 as a sophomore.

### 2014-15 • Big South • Steals

Rk	Name	School	Steals
1.	<b>Leron Fisher</b>	<b>Longwood</b>	<b>43</b>
2.	Kyre' Hamer	Campbell	37
3.	Tyler Strange	Gardner-Webb	36
4.	Javonte Green	Radford	35
5.	Andrew Rowsey	UNC Asheville	32
	Keon Moore	Winthrop	32

## NWOGBO TO MISS 4-6 WEEKS

- Longwood center **Lotanna Nwogbo** will miss 4-6 weeks following surgery to repair a torn thumb ligament he suffered on Jan. 10 at Charleston Southern. Nwogbo started Longwood's first 17 games and scored in double figures in 13 of those.
- Longwood expects Nwogbo to rejoin the lineup prior to the Big South Tournament on March 3.
- Nwogbo still ranks among the Big South's top 10 in rebounding (3rd, 8.2 rpg.), field goal percentage (2nd, .606) and double-doubles (t-2nd, 5). He also ranks 12th with 12.9 points per game and 11th with a .716 (53-of-74) free throw percentage.
- Nwogbo has led Longwood in rebounding 13 times and in scoring five times.
- Nwogbo is in his first season of eligibility at Longwood after transferring prior to 2013-14. He was elected team captain by his teammates.
- In Nwogbo's place, Longwood has used the rotation of 6-7, 215-pound sophomore **Damarion Getter** and 6-8, 215-pound freshman **Victor Dorsey** in the low post while shifting 6-5 junior **Shaquille Johnson** from the three to the four position.

### 2014-15 • Big South • Rebounds Per Game

Rk	Name	School	RPG
1.	Jerome Hill	Gardner-Webb	9.5
2.	Javonte Green	Radford	8.7
3.	<b>Lotanna Nwogbo</b>	<b>Longwood</b>	<b>8.2</b>
4.	Badou Diagne	Coastal Carolina	7.8
5.	William Truss	Presbyterian	7.7

### 2014-15 • Big South • Field Goal Percentage

(Minimum 5.0 made FG per game)

Rk	Name	School	FG Pct.
1	William Truss	Presbyterian	.642
2.	<b>Lotanna Nwogbo</b>	<b>Longwood</b>	<b>.606</b>
3	Tyrell Nelson	Gardner-Webb	.587
4	Cedrick Bowen	Charleston Southern	.583
5	Jaleel Roberts	UNC Asheville	.580

Through games on Jan. 30, 2015

### 2014-15 • Big South • Double-Doubles

Rk	Name	School	Double-Doubles
1.	Jerome Hill	Gardner-Webb	9
2.	Badou Diagne	Coastal Carolina	6
3.	Lotanna Nwogbo	Longwood	5
	Tyrell Nelson	Gardner-Webb	5
	William Truss	Presbyterian	5
	Javonte Green	Radford	5

### 2014-15 • Big South • 10+ Rebound Games

Rk	Name	School	10-Reb Gms
1.	Jerome Hill	Gardner-Webb	9
2.	William Truss	Presbyterian	8
3.	Tyrell Nelson	Gardner-Webb	7
	Badou Diagne	Coastal Carolina	7
5.	<b>Lotanna Nwogbo</b>	<b>Longwood</b>	<b>6</b>
6.	Paul Gombwer	Charleston Southern	5
	Tyrel Nelson	Gardner-Webb	5
	Andrew Smith	Liberty	5

### 2014-15 • Big South • 20-Point, 10-Rebound Games

Rk	Name	School	20-10 Gms
1.	Jerome Hill	Gardner-Webb	4
2.	Lotanna Nwogbo	Longwood	2
	Tyrell Nelson	Gardner-Webb	2
4.	8 tied at		1

Through games on Jan. 26, 2014

## BADOWSKI AMONG BIG SOUTH'S TOP FRESHMEN

- Two-time Big South Freshman of the Week **Ryan Badowski** has been a heavily-featured piece of Longwood's offense and is the Big South's leading freshman scorer at 9.3 points per game.
- Badowski has hit 49-of-121 (.405) three-pointers to rank tied for fifth among NCAA freshmen in made three-pointers, seventh in three-point attempts and seventh in three-point percentage.
- Badowski came off the bench for the first 13 games but was promoted to the starting lineup on Dec. 31 against Winthrop. He has started all nine Big South contests and is averaging 8.8 points with a .465 (20-of-43) three-point shooting percentage in conference play.
- Badowski was Longwood's first option off the bench in 11 of his first 13 games.
- Badowski hit a Longwood freshman-record seven treys in the season opener against Averett, which tied for the second-highest single-game total since Longwood went Division I in 2007-08.
- Longwood is 5-3 when Badowski scores in double figures and 5-4 when he hits at least three three-pointers in a game.

### 2014-15 • Big South • Freshmen • Points Per Game

Rk	Name	School	PPG
1.	<b>Ryan Badowski</b>	<b>Longwood</b>	<b>9.3</b>
2.	Kem Ubaru	UNC Asheville	8.2
3.	Peter Moller	Liberty	7.9
4.	Curtis Phillips	Campbell	7.0
5.	Xavier Cooks	Winthrop	6.9

### 2014-15 • NCAA • Freshmen • Made Three-Pointers

Rk	Name	School	3-pt FG
1.	D'Angelo Russell	Ohio State	60
2.	Schadrac Casimir	Iona	53
3.	Wesley Person	Troy	52
4.	Josh Kozinski	Central Michigan	50
5.	<b>Ryan Badowski</b>	<b>Longwood</b>	<b>49</b>
	James Blackmon	Indiana	49

### 2014-15 • NCAA • Freshmen • Three Point Percentage

Rk	Name	School	3-pt Pct.
1.	James McGee	Southern Utah	.515
2.	Sean Sellers	Ball State	.456
3.	Josh Kozinski	Central Michigan	.455
4.	Jake Wright	Citadel	.438
5.	Schadrac Casimir	Iona	.411
6.	James Blackmon	Indiana	.408
7.	<b>Ryan Badowski</b>	<b>Longwood</b>	<b>.405</b>
8.	Nathan Moran	Lipscomb	.396
9.	Adonys Henriquez	UCF	.396
10.	Wesley Person	Troy	.371

Through games on Jan. 30, 2015

### Longwood • Single Game • Made Three-Pointers

Games in Division I Era (2007-08 — Pres.)

Rk	Name	Date, Opp.	3-FG
1.	Tristan Carey	2-9-13 vs. Liberty	8
2.	<b>Ryan Badowski</b>	<b>11-14-14 vs. Averett</b>	<b>7</b>
	Tristan Carey	11-23-12 vs. Florida A&M	7
	Martiz Washington	2-15-12 vs. Wash. Adv.	7
	Martiz Washington	2-11-12 vs. Seattle	7
	Kevin Swecker	1-12-09 vs. Chicago St.	7
	Ryan Bogan	2-22-08 vs. Liberty	7

## LONGWOOD HOT FROM 3-PT RANGE

- Longwood ranks second in the Big South with a .366 (174-of-476) three-point percentage and fourth with 7.91 made three-point field goals per game.
- That .366 clip would be Longwood's second-highest in the Division I era (since 2007-08).
- The Lancers have hit 10 or more three-pointers seven times this season, including 16-of-29 in an 85-71 win over Liberty on Jan. 17.
- In Big South play, Longwood is shooting .385 (79-of-205) from three-point range.
- Point guard **Quincy Taylor** ranks tied for second in the nation with a .505 (51-of-101) three-point percentage, while freshman **Ryan Badowski** is tied for sixth in the Big South and seventh among NCAA freshmen with a .405 (49-of-121) clip.
- Taylor's .505 clip would rank as the highest single-season three-point percentage in school history. Badowski's .405 mark would be the eighth highest all-time.

### 2014-15 • Big South • Three-Point Percentage

Rk	School	3-FG Pct. (3FG-A)
1.	High Point	.382 (136-356)
2.	<b>Longwood</b>	<b>.366 (174-476)</b>
3.	Gardner-Webb	.357 (184-515)
4.	Radford	.357 (141-395)
5.	UNC Asheville	.355 (159-448)

### Longwood • Season • Three-Point FG Percentage

Rk	Name	Year	3-pt Pct. (3FG-A)
1.	<b>Quincy Taylor</b>	<b>2014-15</b>	<b>.505 (51-101)</b>
2.	Kevin Swecker	2007-08	.467 (35-75)
3.	Hunter Hoggatt	2000-01	.436 (68-156)
4.	M. Cunningham	2001-02	.422 (35-83)
5.	J.B. Neill	1994-95	.421 (56-133)
6.	Jason Pryor	2000-01	.412 (63-153)
7.	DeVonne Johnson	1994-95	.408 (64-157)
8.	<b>Ryan Badowski</b>	<b>2014-15</b>	<b>.405 (49-121)</b>
9.	Billy Dunn	1990-91	.400 (48-120)
10.	Jason Pryor	2001-02	.398 (39-98)

### Longwood • Season • Made Three-Pointers

Division I Era (2007-08 to present)

Rk	Name	Year	3-pt FGM
1.	Tristan Carey	2013-14	94
2.	Martiz Washington	2010-11	85
	Martiz Washington	2011-12	85
4.	Tristan Carey	2012-13	81
5.	Ryan Bogan	2008-09	70
6.	Ryan Bogan	2007-08	64
	Martiz Washington	2009-10	64
8.	Kevin Swecker	2008-09	63
9.	Kevin Swecker	2009-10	59
10.	Tristan Carey	2011-12	55
11.	<b>Quincy Taylor</b>	<b>2014-15</b>	<b>51</b>
12.	Brandon Giles	2007-08	50
13.	Lucas Woodhouse	2013-14	49
	<b>Ryan Badowski</b>	<b>2014-15</b>	<b>49</b>
15.	Durann Neil	2008-09	41
	Martiz Washington	2008-09	41
	David Robinson	2012-13	41

### Longwood • Season • Three-Point FG Percentage

Division I Era (2007-08 to present)

Rk	Year	3-FG Pct. (3FG-A)
1.	2007-08	.368 (258-702)
2.	<b>2014-15</b>	<b>.366 (174-476)</b>
3.	2010-11	.356 (236-662)
4.	2013-14	.351 (180-513)
5.	2011-12	.349 (265-759)

## HOME SWEET HOME

- The Lancers are 5-3 on their home court at Willett Hall this season. Longwood has defeated two conference opponents at home — Radford, 90-79 in double overtime, and Liberty, 85-71 — along with non-conference foes Dartmouth (74-73), Averett (79-53) and Penn State Beaver (106-74).
- Longwood outscores opponents by 7.5 points per game at home while averaging 79.0 points per game.
- Freshman **Ryan Badowski** shoots .556 (25-of-45) from three-point range at home, while redshirt senior guard **Quincy Taylor** shoots .533 (24-of-45). As a team, Longwood shoots .403 (75-of-186) from three-point range in Willett.
- Taylor has been Longwood's most productive player at home, averaging a team-best 22.6 points and 3.0 assists per game in Willett Hall. **Shaquille Johnson** (14.9 ppg.), Badowski (12.0), **Lotanna Nwogbo** (12.0) and **Leron Fisher** (10.4) also average double-digit scoring at home.

## ALLEN FLASHES SCORING PROWESS

- Sophomore guard **Darrion Allen** reached the 20-point scoring plateau in back-to-back games this season, registering 20 points against James Madison on Nov. 19 and then set a new career-high with 22 points against UNCG on Nov. 21.
- Allen led Longwood in field goal attempts in both of those games, hitting .483 (14-of-29) shots from the field and .417 (5-of-12) from three-point range.
- In the 81-79 overtime win against UNCG, Allen hit back-to-back three-pointers in the closing 45 seconds of overtime, including a game-winning trey with 28 seconds left that erased a two-point deficit.
- Allen averages 5.5 points per game this season. He has made 14 starts and played at least 15 minutes in all but three games.

## GETER'S QUIET CONTRIBUTIONS

- Starting forward **Damarion Geter**, a sophomore and team captain, is among Longwood's most valuable and versatile pieces of the lineup. The 6-7, 215-pound forward is labeled as a "point forward" by the coaching staff and has the ability to play every position on the floor.
- Geter averages just 1.9 points per game but has taken just 32 field goal attempts in 22 games. He shoots .563 (18-of-32) from the floor and leads Longwood with 17 blocks. His 44 rebounds ranks third on the team, while his 33 assists rank fourth.
- Geter has led Longwood in assists four times this season. Longwood is 3-1 in those games.



## 2014-15 GAME-BY-GAME LEADERS

Overall Record: 6-16 (Home: 5-3; Road: 0-12; Neutral: 1-1)

Big South Record: 2-7 (Home: 3-1; Road: 0-7)

Date	Opponent	W/L	Score	Longwood High Scorer	Opponent High Scorer	Longwood High Rebounder	Opponent High Rebounder	Longwood High Assists
11/8	<b>HAMPDEN-SYDNEY (Exh.)</b>	W	95-60	Taylor (22)	Guimarães (15)	Geter/Nwogbo (6)	Katowitz (4)	Taylor (6)
11/14	<b>AVERETT</b>	W	79-53	Badowski (21)	Jones (19)	Nwogbo (6)	Jones (7)	Geter/Obi-Rapu (4)
11/19	James Madison	L	82-60	Allen (20)	Grays (20)	Nwogbo (7)	Vodanovich (6)	Fisher (4)
11/21	#UNC Greensboro	W	81-79 (OT)	Allen (22)	Saddler/White (19)	Nwogbo (12)	White (10)	Geter/Johnson (6)
11/22	#Youngstown State	L	82-72	Johnson/Nwogbo (16)	Cole (18)	Nwogbo (8)	Hain (12)	Taylor (7)
11/23	#Eastern Michigan	L	79-48	Nwogbo (14)	Lee/Okoloji (14)	Dorsey (8)	Okoloji/Samuels (6)	Johnson/Taylor (4)
11/26	George Washington	L	91-66	Nwogbo (25)	Kopriva (19)	Nwogbo (13)	McDonald (10)	Fisher (4)
11/29	Iowa	L	77-44	Johnson (16)	White (19)	Nwogbo (12)	Olaseni/Uthoff (6)	Johnson (6)
12/3	<b>DARTMOUTH</b>	W	74-73	Taylor (34)	Boehm/Gill (14)	Johnson (5)	Boehm (7)	Johnson (5)
12/6	<b>UT MARTIN</b>	L	77-67	Taylor (26)	Smith (16)	Nwogbo (6)	Howard/Oldham (5)	Obi-Rapu (2)
12/14	UMBC	L	58-53	Johnson (17)	Sparrow (20)	Johnson/Nwogbo (7)	Sparrow (7)	Fisher (3)
12/17	Miami (OH)	L	71-60	Taylor (16)	McKnight/Washington (19)	Nwogbo (9)	Sullivan (6)	Obi-Rapu (3)
12/20	<b>PENN STATE BEAVER</b>	W	106-74	Johnson (22)	Wright (21)	Geter (8)	James (8)	4 tied at (3)
12/28	Ball State	L	69-64	Taylor (20)	Sellers (15)	Nwogbo (8)	House (9)	Fisher (4)
12/31	*Winthrop	L	82-72 (OT)	Johnson/Nwogbo (18)	Moore (27)	Nwogbo (12)	Cooks (9)	Fisher (3)
1/3	* <b>RADFORD</b>	W	90-79 (20T)	Fisher (26)	Jones (20)	Nwogbo (14)	Green (11)	Taylor (7)
1/8	*Coastal Carolina	L	76-70	Nwogbo (23)	Gillis/Wiggins (15)	Nwogbo (10)	Diagne (12)	Johnson/Taylor (3)
1/10	*Charleston Southern	L	68-54	Taylor (14)	Nimley (18)	Geter/Johnson (6)	Gombwer (11)	Johnson (3)
1/14	* <b>PRESBYTERIAN</b>	L	71-67	Taylor (23)	Murray (18)	Johnson (9)	Murray (12)	Fisher (5)
1/17	* <b>LIBERTY</b>	W	85-71	Johnson (31)	Andoh (24)	Johnson (8)	Smith (9)	Johnson (5)
1/19	*High Point	L	72-67	Taylor (19)	Wallace (16)	Geter (6)	Wallace (7)	Geter/Johnson (6)
1/22	*Gardner-Webb	L	79-67	Fisher (25)	Hill (31)	Geter (8)	Nelson (9)	Fisher (5)
1/28	* <b>UNC ASHEVILLE</b>	L	74-64	Taylor (25)	Rowsey (24)	Badowski/Johnson/Geter (5)	Hughes (11)	Fisher (3)
1/31	*Presbyterian							
2/3	* <b>GARDNER-WEBB</b>							
2/6	*UNC Asheville							
2/11	*Radford							
2/14	* <b>CHARLESTON SO.</b>							
2/17	*Liberty							
2/21	* <b>WINTHROP</b>							
2/23	* <b>COASTAL CAROLINA</b>							
2/28	* <b>CAMPBELL</b>							
3/3-8	Big South Championship							

Home games in BOLD CAPS  
# EMU Showcase Tournament  
\* Big South game

## 2014-15 MISCELLANEOUS LEADERS

### GAMES AS LEADING SCORER

Quincy Taylor	8
Shaquille Johnson	6
Lotanna Nwogbo	5
Darrion Allen	2
Leron Fisher	2
Ryan Badowski	1

### GAMES AS LEADING REBOUNDER

Lotanna Nwogbo	14
Damarion Geter	6
Shaquille Johnson	6
Victor Dorsey	1
Ryan Badowski	1

### GAMES AS ASSISTS LEADER

Shaquille Johnson	9
Leron Fisher	9
Quincy Taylor	6
Damarion Geter	4
Kanayo Obi-Rapu	3

### DOUBLE-FIGURE SCORING GAMES

Quincy Taylor	17
Shaquille Johnson	15
Lotanna Nwogbo	12
Ryan Badowski	8
Leron Fisher	8
Darrion Allen	3
Kanayo Obi-Rapu	2

### 20-POINT GAMES

Quincy Taylor	6
Darrion Allen	2
Ryan Badowski	2
Leron Fisher	2
Shaquille Johnson	2
Lotanna Nwogbo	2

### 30-POINT GAMES

Shaquille Johnson	1
Quincy Taylor	1

### DOUBLE-FIGURE REBOUNDING GAMES

Lotanna Nwogbo	6
----------------	---

### DOUBLE-DOUBLES

Lotanna Nwogbo	5
Lotanna Nwogbo	27
Shaquille Johnson	19
Darrion Allen	3
Tyler Akers	1
Isaac Belton	1
Damarion Geter	1

### OPENING TIPOFFS CONTROLLED

Lotanna Nwogbo	7
Damarion Geter	3
Opponent	12

### THREE-POINT PLAYS

Leron Fisher	5
Shaquille Johnson	5
Quincy Taylor	5
Lotanna Nwogbo	3
Ryan Badowski	2
Darrion Allen	1
Kanayo Obi-Rapu	2

### FOUR-POINT PLAYS

Ryan Badowski	1
---------------	---

### LONGWOOD'S FIRST SUBSTITUTION

Ryan Badowski	11
Darrion Allen	6
Kanayo Obi-Rapu	6
Damarion Geter	4
Victor Dorsey	3
Leron Fisher	2



# JAYSON GEE

**Head Coach**

**Second Season**

**University of Charleston, '88**

**Career Record: 175-95 (Ninth Season)**

**Longwood Record: 15-40 (Second Season)**

## CAREER NOTES

- In second season as head coach at Longwood
- Led Longwood to eight wins in 2013-14, including a buzzer-beating, 82-79 win at TCU on November 12
- Also led the Lancers to a 69-66 win over Liberty on January 22
- Has rebuilt three programs in his coaching career, including the Charleston (W.Va.) program as head coach from 1996-2003 and the Cleveland State program as associate head coach from 2006-13 ... Gee won championships by his third year at both stops
- Owns a 175-95 (.648) record as a head coach ... owns a 429-395(.520) record all-time as a collegiate coach
- At Cleveland State, recruited and coached Norris Cole, the 2011 Horizon League MVP and Defensive Player of the Year and a first-round NBA Draft selection currently playing with the Miami Heat
- Named the 10th-best assistant coach in college basketball by Daniel O'Brien's Bleacher Report following 2011-12 season at Cleveland State

## GEE'S COACHING CAREER

### YOUNGSTOWN STATE (1989-93)

*Assistant Coach*

Year	Overall	Conference	Postseason
1989-90	8-20	n/a	n/a
1990-91	12-16	n/a	n/a
1991-92	6-22	n/a	n/a
1992-93	3-23	2-14	n/a
<b>Overall (4)</b>	<b>29-81</b>	<b>2-14</b>	<b>n/a</b>

### OHIO (1993-95)

*Assistant Coach*

Year	Overall	Conference	Postseason
1993-94	25-8	14-4	NCAA (1st Rd.)
1994-95	24-10	13-5	NIT (2nd Rd.)
<b>Overall (2)</b>	<b>49-18</b>	<b>27-9</b>	<b>1 NCAA</b>

### OHIO (1993-95)

*Associate Head Coach*

Year	Overall	Conference	Postseason
1996-97	16-14	11-7	n/a
<b>Overall (1)</b>	<b>16-14</b>	<b>11-7</b>	<b>n/a</b>

### CHARLESTON (W.Va.) (1996-2003)

*Head Coach*

Year	Overall	Conference	Postseason
1996-97	15-15	7-12	n/a
1997-98	22-6	15-5	n/a
1998-99	26-6	15-4	NCAA (2nd Rd.)
1999-00	28-4	18-1	NCAA (2nd Rd.)
2000-01	23-7	16-2	NCAA (2nd Rd.)
2001-02	25-7	14-4	NCAA (2nd Rd.)
2002-03	21-10	13-5	n/a
<b>Overall (7)</b>	<b>160-55</b>	<b>98-33</b>	<b>4 NCAA</b>

### ST. BONAVENTURE (2003-04)

*Assistant Coach*

Year	Overall	Conference	Postseason
2003-04	7-21	3-13	n/a
<b>Overall (1)</b>	<b>7-21</b>	<b>3-13</b>	<b>n/a</b>

### ST. BONAVENTURE (2004-06)

*Associate Head Coach*

Year	Overall	Conference	Postseason
2004-05	2-26	1-15	n/a
2005-06	8-19	2-14	n/a
<b>Overall (2)</b>	<b>17-66</b>	<b>6-42</b>	<b>n/a</b>

### CLEVELAND STATE (2006-13)

*Associate Head Coach*

Year	Overall	Conference	Postseason
2006-07	10-21	3-13	n/a
2007-08	21-13	12-6	NIT (1st Rd.)
2008-09	26-11	12-6	NCAA (2nd Rd.)
2009-10	16-17	10-8	n/a
2010-11	27-9	13-5	NIT (2nd Rd.)
2011-12	22-11	12-6	NIT (1st Rd.)
2012-13	14-18	5-11	n/a
<b>Overall (7)</b>	<b>136-100</b>	<b>67-55</b>	<b>1 NCAA</b>

### LONGWOOD (2013-Present)

*Head Coach*

Year	Overall	Conference	Postseason
2013-14	8-24	3-13	n/a
2014-15	6-16	2-7	—
<b>Overall (2)</b>	<b>15-40</b>	<b>5-20</b>	<b>n/a</b>
<b>HC Career (9)</b>	<b>175-95</b>	<b>103-53</b>	<b>4 NCAA</b>



## NUMERICAL ROSTER

No.	Name	Pos.	Ht.	Wt.	Cl.	Hometown / High School / Previous School
0	*Tra'Vaughn White	G	5-10	190	Jr.	Kansas City, Kan. / Washington / Duquesne
1	Leron Fisher	G	5-11	160	Jr.	Baltimore, Md. / Lake Clifton / Allan Hancock (Calif.) Community College
2	Bryan Gee	G	6-0	175	Fr.	Cleveland, Ohio / Cornerstone Christian
3	Darrion Allen	G	6-2	165	So.	Pompano Beach, Fla. / Blanche Ely
4	*Khris Lane	F	6-6	225	So.	Richmond, Va. / Benedictine / Drexel
10	Lotanna Nwogbo	F/C	6-8	255	R-Jr.	Lithonia, Ga. / Mount Vernon Presbyterian / Tulane
11	Kanayo Obi-Rapu, Jr.	G	6-3	190	Fr.	Greensboro, N.C. / New Garden Friends
14	Victor Dorsey	F	6-9	200	Fr.	Akron, Ohio / Akron Springfield
15	Isaac Belton	G	6-4	205	So.	Salem, Va. / Virginia Episcopal / Fork Union Military Academy
21	Shaquille Johnson	G/F	6-5	220	Jr.	Atlanta, Ga. / Milton / Northwest Florida Community College
23	Ryan Badowski	G	6-3	185	Fr.	Cleveland, Ohio / Brunswick
24	Damarion Geter	F	6-7	215	So.	Dayton, Ohio / Dunbar
25	Quincy Taylor	G	6-0	180	R-Sr.	Wichita, Kan. / Wichita Collegiate / University of Alabama Birmingham
30	Tyler Akers	G	6-4	180	Sr.	Wytheville, Va. / George Wythe / Roanoke College

\* — Player will redshirt 2014-15 season due to NCAA transfer rules

## ALPHABETICAL ROSTER

No.	Name	Pos.	Ht.	Wt.	Cl.	Hometown / High School / Previous School
30	Tyler Akers	G	6-4	180	Sr.	Wytheville, Va. / George Wythe / Roanoke College
3	Darrion Allen	G	6-2	165	So.	Pompano Beach, Fla. / Blanche Ely
23	Ryan Badowski	G	6-3	185	Fr.	Cleveland, Ohio / Brunswick
15	Isaac Belton	G	6-4	205	So.	Salem, Va. / Virginia Episcopal / Fork Union Military Academy
14	Victor Dorsey	F	6-9	200	Fr.	Akron, Ohio / Akron Springfield
1	Leron Fisher	G	5-11	160	Jr.	Baltimore, Md. / Lake Clifton / Allan Hancock (Calif.) Community College
2	Bryan Gee	G	6-0	175	Fr.	Cleveland, Ohio / Cornerstone Christian
24	Damarion Geter	F	6-7	215	So.	Dayton, Ohio / Dunbar
21	Shaquille Johnson	G/F	6-5	220	Jr.	Atlanta, Ga. / Milton / Northwest Florida Community College
4	*Khris Lane	F	6-6	225	So.	Richmond, Va. / Benedictine / Drexel
10	Lotanna Nwogbo	F/C	6-8	255	R-Jr.	Lithonia, Ga. / Mount Vernon Presbyterian / Tulane
11	Kanayo Obi-Rapu, Jr.	G	6-3	190	Fr.	Greensboro, N.C. / New Garden Friends
25	Quincy Taylor	G	6-0	180	R-Sr.	Wichita, Kan. / Wichita Collegiate / University of Alabama Birmingham
0	*Tra'Vaughn White	G	5-10	190	Jr.	Kansas City, Kan. / Washington / Duquesne

\* — Player will redshirt 2014-15 season due to NCAA transfer rules

## COACHING STAFF

Name	Title	Year	Alma Mater
Jayson Gee	Head Coach	Second Season	Charleston (W. Va.), '88
Jake Luhn	Assistant Coach	Second Season	UMass-Boston, '02
Samba Johnson	Assistant Coach	First Season	Chaminade, '96
Craig Carter	Assistant Coach	First Season	Rutgers, '91
Jake Gritzmacher	Graduate Manager	Second Season	Wisconsin-Whitewater, '13

## PRONUNCIATION GUIDE

DARRION Allen	DARE-ee-in
Ryan BADOWSKI	buh-DOW-skee
LERON Fisher	luh-RON
Bryan GEE	JEE
Jayson GEE	JEE
DAMARION GETER	duh-MAR-ee-ahn JEE-ter
LOTANNA NWOGBO	low-TAH-nuh WHOA-bo
KANAYO OBI-RAPU	kuh-NYE-oh OH-bee rah-POO



**2014-15 LONGWOOD MEN'S BASKETBALL SCHEDULE**

Date	Opponent	Location	Venue	W/L	Time
<b>NOVEMBER 8</b>	<b>HAMPDEN-SYDNEY (EXH.)</b>	<b>FARMVILLE, VA.</b>	<b>WILLETT HALL</b>	<b>W</b>	<b>95-60</b>
<b>NOVEMBER 14</b>	<b>AVERETT</b>	<b>FARMVILLE, VA.</b>	<b>WILLETT HALL</b>	<b>W</b>	<b>79-53</b>
November 19	James Madison	Harrisonburg, VA	Convocation Center	L	80-62
November 21	#UNC Greensboro	Ypsilanti, Mich.	EMU Convocation Center	W	81-79 (OT)
November 22	#Youngstown State	Ypsilanti, Mich.	EMU Convocation Center	L	82-72
November 23	#Eastern Michigan	Ypsilanti, Mich.	EMU Convocation Center	L	79-48
November 26	George Washington	Washington, D.C.	Smith Center	L	91-66
November 29	Iowa	Iowa City, Iowa	Carver-Hawkeye Arena	L	77-44
<b>DECEMBER 3</b>	<b>DARTMOUTH</b>	<b>FARMVILLE, VA.</b>	<b>WILLETT HALL</b>	<b>W</b>	<b>74-73</b>
<b>DECEMBER 6</b>	<b>UT MARTIN</b>	<b>FARMVILLE, VA.</b>	<b>WILLETT HALL</b>	<b>L</b>	<b>77-67</b>
December 14	UMBC	Baltimore, Md.	RAC Arena	L	58-53
December 17	Miami (OH)	Oxford, Ohio	Millett Hall	L	71-60
<b>DECEMBER 20</b>	<b>PENN STATE BEAVER</b>	<b>FARMVILLE, VA.</b>	<b>WILLETT HALL</b>	<b>W</b>	<b>106-74</b>
December 28	Ball State	Muncie, Ind.	Worthen Arena	L	69-64
December 31	*Winthrop	Rock Hill, S.C.	Winthrop Coliseum	L	82-72 (OT)
<b>JANUARY 3</b>	<b>*RADFORD</b>	<b>FARMVILLE, VA.</b>	<b>WILLETT HALL</b>	<b>W</b>	<b>90-79 (20T)</b>
January 8	*Coastal Carolina	Conway, S.C.	The HTC Center	L	76-70
January 10	*Charleston Southern	Charleston, SC	Buc Dome	L	68-54
<b>JANUARY 14</b>	<b>*PRESBYTERIAN</b>	<b>FARMVILLE, VA.</b>	<b>WILLETT HALL</b>	<b>L</b>	<b>71-67</b>
<b>JANUARY 17</b>	<b>*LIBERTY</b>	<b>FARMVILLE, VA.</b>	<b>WILLETT HALL</b>	<b>W</b>	<b>85-71</b>
January 19	*High Point	High Point, N.C.	Millis Center	L	72-67
January 22	*Gardner-Webb	Boiling Springs, N.C.	Paul Porter Arena	L	79-67
<b>JANUARY 28</b>	<b>*UNC ASHEVILLE</b>	<b>FARMVILLE, VA.</b>	<b>WILLETT HALL</b>	<b>L</b>	<b>74-64</b>
January 31	*Presbyterian	Clinton, S.C.	Templeton Center		7 p.m.
<b>FEBRUARY 3</b>	<b>*GARDNER-WEBB</b>	<b>FARMVILLE, VA.</b>	<b>WILLETT HALL</b>		<b>7 p.m.</b>
February 6	*UNC Asheville	Asheville, N.C.	Kimmel Arena		7 p.m.
February 11	*Radford	Radford, Va.	Dedmon Center		5 p.m.
<b>FEBRUARY 14</b>	<b>*CHARLESTON SOUTHERN</b>	<b>FARMVILLE, VA.</b>	<b>WILLETT HALL</b>		<b>5 p.m.</b>
February 17	*Liberty	Lynchburg, Va.	Vines Center		7 p.m.
<b>FEBRUARY 21</b>	<b>*WINTHROP</b>	<b>FARMVILLE, VA.</b>	<b>WILLETT HALL</b>		<b>5 p.m.</b>
<b>FEBRUARY 23</b>	<b>*COASTAL CAROLINA</b>	<b>FARMVILLE, VA.</b>	<b>WILLETT HALL</b>		<b>7 p.m.</b>
<b>FEBRUARY 28</b>	<b>*CAMPBELL</b>	<b>FARMVILLE, VA.</b>	<b>WILLETT HALL</b>		<b>2 p.m.</b>
March 3-8	Big South Championship	Myrtle Beach, S.C.	The HTC Center		TBA

Home games in **BOLD CAPS**

# EMU Showcase Tournament

\* Big South game

All times eastern and subject to change

**NEW LOGO:** Effective April 9, 2014, Longwood unveiled its new logo scheme. To request digital files of the new logo, please contact Longwood Athletics Communications.



















**#30**

**TYLER AKERS**

**Senior • 6-4 • 180 • Guard**

**Wyethville, Va.**

**George Wythe / Roanoke College**

**Major: Business Administration (Master's)**

**2014-15**

- Elected team captain by his teammates
- Pursuing master's degree in business administration
- Second season at Longwood after transferring from Roanoke College prior to 2013-14 season ... received bachelor's degree in sport management from Roanoke

**2014-15 Game Log**

Opp	FG-A	3FG-A	FT-A	O-D-T	PF	TP	A	TO	B	S	Min
Averett	0-2	0-2	2-2	0-1-1	0	2	1	2	0	0	3
James Madison	0-0	0-0	0-0	0-0-0	0	0	0	0	0	0	1
UNCG				DNP							
Youngstown State				DNP							
Eastern Michigan	0-0	0-0	0-0	0-0-0	0	0	0	0	0	0	4
George Washington	0-0	0-0	0-0	0-0-0	0	0	0	0	0	0	1
Iowa				DNP							
Dartmouth				DNP							
UT Martin	0-0	0-0	0-0	0-0-0	0	0	0	0	0	0	0+
UMBC				DNP							
Miami (OH)				DNP							
Penn St. Beaver	1-2	0-1	1-2	1-0-1	1	3	0	1	0	0	6
Ball State				DNP							
Winthrop				DNP							
Radford				DNP							
Coastal Carolina				DNP							
Charleston Southern				DNP							
Presbyterian				DNP							
Liberty				DNP							
High Point				DNP							
Gardner-Webb				DNP							
UNC Asheville	0-0	0-0	0-0	0-0-0	0	0	0	0	0	0	1
Presbyterian											
Gardner-Webb											
UNC Asheville											
Radford											
Charleston Southern											
Liberty											
Winthrop											
Coastal Carolina											
Campbell											



**CAREER HIGHS**

Points	3 (2x)	vs. PSU-Beaver	12-20-14
Rebounds	1 (6x)	vs. PSU-Beaver	12-20-14
Assists	1	(2x) vs. Averett	11-14-14
Steals	N/A		
Blocks	N/A		
FG Made	1 (3x)	vs. PSU-Beaver	12-20-14
3FG Made	1	vs. Liberty	2-25-14
FT Made	2	(2x) vs. Averett	11-14-14
Minutes	6	vs. PSU-Beaver	12-20-14

**Career Stats**

Year	GP-GS	Min	Avg.	FG-A	FG%	3FG-A	3FG%	FT-A	FT%	O-D-T	Avg.	PF-DQ	A	TO	B	S	Pts	Avg
2011-12 (Roanoke)	9-0	24	2.7	4-9	.444	1-5	.200	4-4	1.000	0-3-3	0.3	1-0	2	2	1	0	13	1.4
2012-13 (Roanoke)	20-0	52	2.6	18-50	.360	7-23	.304	9-16	.563	8-7-15	0.8	9-0	7	11	1	8	127	6.4
2013-14	19-0	26	1.4	2-5	.400	1-4	.250	4-6	.667	1-4-5	0.3	3-0	1	1	0	0	9	0.5
2014-15	7-0	16	2.3	1-4	.250	0-3	.000	3-4	.750	1-1-2	0.3	1-0	1	3	0	0	5	0.7
<b>CAREER (Division I)</b>	<b>26-0</b>	<b>42</b>	<b>1.6</b>	<b>3-9</b>	<b>.333</b>	<b>1-7</b>	<b>.143</b>	<b>7-10</b>	<b>.700</b>	<b>2-5-7</b>	<b>0.3</b>	<b>4-0</b>	<b>2</b>	<b>4</b>	<b>0</b>	<b>0</b>	<b>14</b>	<b>0.5</b>



**#25**

**QUINCY TAYLOR**

**R-Senior • 6-0 • 180 • Guard**

**Wichita, Kan.**

**Wichita Collegiate / Univ. of Alabama-Birmingham**

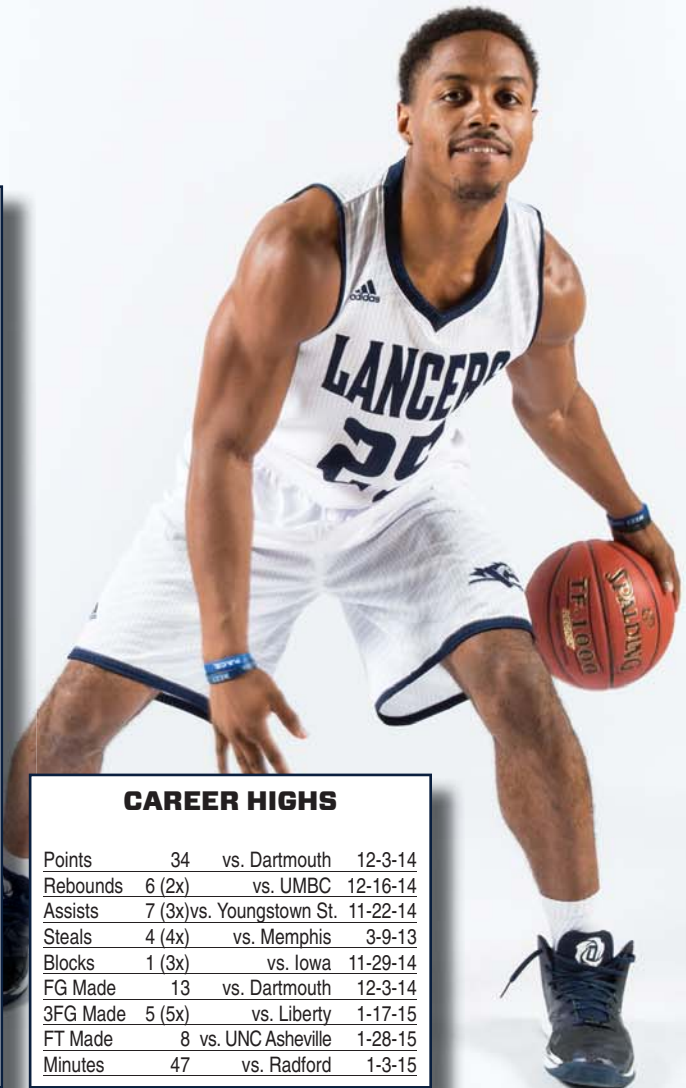
**Major: Sociology**

**2014-15**

- Elected team captain by his teammates
- Has made 60 starts in his collegiate career
- Four 20-point games, one 30-point game
- Double-figure scoring in 16 of 17 games
- Second nationally with .500 three-point percentage

**2014-15 Game Log**

Opp	FG-A	3FG-A	FT-A	O-D-T	PF	TP	A	TO	B	S	Min
Averett				DNP							
James Madison				DNP							
UNCG				DNP							
Youngstown St.	6-14	2-6	0-2	0-4-4	2	14	7	2	0	0	39*
Eastern Michigan	3-7	0-0	0-2	1-1-2	3	6	4	5	0	1	30*
George Washington	3-12	1-4	5-6	0-3-3	4	12	1	0	0	2	25*
Iowa	3-9	3-3	1-2	1-2-3	4	10	1	4	1	0	30*
Dartmouth	13-18	5-7	3-3	1-1-2	1	34	3	2	0	1	35*
UT Martin	9-18	4-8	4-4	2-0-2	3	26	1	1	0	1	38*
UMBC	6-20	2-6	1-1	0-6-6	3	15	1	4	1	1	40*
Miami (OH)	6-15	2-5	2-4	1-4-5	3	16	2	6	0	3	36*
Penn St. Beaver	7-12	2-5	3-4	0-3-3	1	19	3	2	0	3	23*
Ball State	7-18	5-9	1-2	1-0-1	3	20	4	2	0	3	36*
Winthrop	4-16	1-5	4-4	0-5-5	3	13	0	2	0	0	34*
Radford	4-13	0-4	2-4	0-6-6	3	10	7	6	0	0	47*
Coastal Carolina	5-13	3-4	1-1	0-5-5	3	14	3	0	0	0	38*
Charleston Southern	5-11	4-6	0-0	0-0-0	4	14	1	6	0	3	36*
Presbyterian	8-15	5-9	2-3	0-1-1	3	23	2	3	0	1	38*
Liberty	7-12	5-6	2-2	0-3-3	1	21	4	1	0	2	39*
High Point	6-16	3-7	4-5	0-0-0	4	19	1	5	0	2	37*
Gardner-Webb	2-6	1-1	0-3	0-1-1	1	5	2	3	0	0	32*
UNC Asheville	7-17	3-6	8-10	0-1-1	3	25	1	3	0	1	33*
Presbyterian											
Gardner-Webb											
UNC Asheville											
Radford											
Charleston Southern											
Liberty											
Winthrop											
Coastal Carolina											
Campbell											



**CAREER HIGHS**

Points	34	vs. Dartmouth	12-3-14
Rebounds	6 (2x)	vs. UMBC	12-16-14
Assists	7 (3x)	vs. Youngstown St.	11-22-14
Steals	4 (4x)	vs. Memphis	3-9-13
Blocks	1 (3x)	vs. Iowa	11-29-14
FG Made	13	vs. Dartmouth	12-3-14
3FG Made	5 (5x)	vs. Liberty	1-17-15
FT Made	8	vs. UNC Asheville	1-28-15
Minutes	47	vs. Radford	1-3-15

**Career Stats**

Year	GP-GS	Min	Avg.	FG-A	FG%	3FG-A	3FG%	FT-A	FT%	O-D-T	Avg.	PF-DQ	A	TO	B	S	Pts	Avg
2010-11 (UAB)	31-5	559	18.0	27-83	.325	15-56	.268	5-8	.625	20-36-56	1.8	33-0	26	15	0	21	74	2.4
2011-12 (UAB)	29-28	956	33.0	64-158	.405	27-78	.346	31-48	.646	13-37-50	1.7	58-0	88	93	0	25	186	6.4
2012-13 (UAB)	33-10	718	21.8	45-120	.375	32-84	.381	10-17	.588	3-55-58	1.8	65-0	98	58	2	37	132	4.0
2013-14																		
DID NOT PLAY — NCAA Transfer rules																		
2014-15	19-19	666	35.1	111-262	.424	51-101	.505	43-62	.694	7-46-53	2.8	52-0	48	57	2	24	316	16.6
<b>CAREER</b>	<b>112-62</b>	<b>2899</b>	<b>25.9</b>	<b>247-623</b>	<b>.397</b>	<b>125-319</b>	<b>.392</b>	<b>89-135</b>	<b>.659</b>	<b>43-174-217</b>	<b>1.9</b>	<b>208-0</b>	<b>260</b>	<b>223</b>	<b>4</b>	<b>107</b>	<b>708</b>	<b>6.3</b>



#1

**LERON FISHER**

Junior • 5-11 • 160 • Guard

Baltimore, Md.

Lake Clifton / Allan Hancock (Calif.) Community College

Major: Undecided

**2014-15**

- Lone returning starter from 2013-14 team
- Slated as the backup point guard to Quincy Taylor
- Lockdown defender, defensive stopper
- Top five in Big South in steals per game and free throw percentage
- Career-high 26 points in 90-79 double-OT win over Radford

**2014-15 Game Log**

Opp	FG-A	3FG-A	FT-A	O-D-T	PF	TP	A	TO	B	S	Min
Averett	3-8	1-3	1-2	2-0-2	3	8	3	4	0	4	32*
James Madison	2-4	1-2	1-2	1-0-1	1	6	4	3	0	3	29*
UNCG	3-6	0-2	6-8	0-3-3	2	12	1	2	1	3	36*
Youngstown State	1-1	0-0	0-0	0-1-1	1	2	1	2	0	0	9
Eastern Michigan	2-9	1-4	0-0	0-1-1	2	5	0	2	0	1	15
George Washington	1-7	0-2	0-2	0-1-1	3	2	4	1	0	1	23
Iowa	1-7	1-1	2-2	1-1-2	0	5	2	1	0	0	25
Dartmouth	2-2	1-1	2-2	1-0-1	1	7	0	2	0	0	8
UT Martin	3-5	1-2	0-0	0-2-2	3	7	1	0	0	1	19
UMBC	1-7	1-3	2-2	1-0-1	4	5	3	2	0	3	31*
Miami (OH)	1-3	1-1	1-2	0-5-5	3	4	1	3	0	1	26*
Penn St. Beaver	2-4	0-2	1-1	0-3-3	2	5	3	3	0	1	23*
Ball State	1-2	0-1	2-2	0-2-2	1	4	4	2	0	4	23
Winthrop	1-4	0-2	5-6	1-5-6	2	7	3	1	0	1	33*
Radford	5-11	2-4	14-14	0-4-4	2	26	3	3	1	2	40*
Coastal Carolina	3-7	2-3	4-6	1-0-1	1	12	2	1	0	1	25
Charleston Southern	4-10	1-5	3-5	0-4-4	3	12	1	1	0	2	20
Presbyterian	3-10	1-4	2-2	0-2-2	2	9	5	0	0	2	31
Liberty	1-9	0-4	8-11	1-2-3	3	10	1	2	0	3	19*
High Point	3-10	0-1	6-8	0-4-4	4	12	0	0	0	3	28*
Gardner-Webb	9-17	5-8	2-3	0-2-2	0	25	5	5	0	4	37*
UNC Asheville	4-9	0-4	3-3	1-1-2	3	11	3	2	1	3	26*
Presbyterian											
Gardner-Webb											
UNC Asheville											
Radford											
Charleston Southern											
Liberty											
Winthrop											
Coastal Carolina											
Campbell											



**CAREER HIGHS**

Points	26	vs. Radford	1-3-15
Rebounds	6	vs. Winthrop	12-31-14
Assists	6 (2x)	vs. Virginia Intermont	12-7-13
Steals	6	vs. Liberty	1-22-14
Blocks	1 (4x)	vs. Radford	1-3-15
FG Made	9	vs. Gardner-Webb	1-22-15
3FG Made	5	vs. Gardner-Webb	1-22-15
FT Made	14	vs. Radford	1-3-15
Minutes	40	vs. Radford	1-3-15

**Career Stats**

Year	GP-GS	Min	Avg.	FG-A	FG%	3FG-A	3FG%	FT-A	FT%	O-D-T	Avg.	PF-DQ	A	TO	B	S	Pts	Avg	
2012-13																			
PLAYED AT ALLAN HANCOCK COMMUNITY COLLEGE																			
2013-14	32-24	881	27.5	62-211	.294	23-69	.333	74-105	.705	4-50-54	1.7	51-0	75	61	2	53	221	6.9	
2014-15	22-11	558	25.4	56-152	.368	19-59	.322	65-83	.783	10-43-53	2.4	46-0	50	42	3	43	196	8.9	
<b>CAREER (Division I)</b>	<b>54-35</b>	<b>1439</b>	<b>26.6</b>	<b>118-363</b>	<b>.325</b>	<b>42-128</b>	<b>.328</b>	<b>139-188</b>	<b>.739</b>	<b>14-93-107</b>	<b>2.0</b>	<b>97-0</b>	<b>125</b>	<b>103</b>	<b>5</b>	<b>96</b>	<b>417</b>	<b>7.7</b>	



**#21**

**SHAQUILLE JOHNSON**

**Junior • 6-5 • 220 • Guard/Forward**

**Atlanta, Ga.**

**Milton / Northwest Florida Community College**

**Major: Undecided**

**2014-15**

- An ESPN.com top-100 recruit out of high school
- Explosive leaper with 44-inch vertical jump ... strong passer, averaging 3.1 assists per game ... leads team in assists
- Tabbed the No. 4 dunker in college basketball by CollegeBasketballTalk on NBCSports.com
- Double-figure scoring in 12 of 19 games

**2014-15 Game Log**

Opp	FG-A	3FG-A	FT-A	O-D-T	PF	TP	A	TO	B	S	Min
Averett	4-11	1-4	3-4	0-2-2	3	12	3	4	0	1	31*
James Madison	4-9	0-3	2-3	3-0-3	4	10	3	5	0	0	25*
UNCG	6-15	1-5	0-0	2-1-3	4	13	6	4	0	1	38*
Youngstown State	7-14	2-3	0-2	0-4-4	2	14	7	2	0	0	39*
Eastern Michigan	2-7	1-4	0-0	0-5-5	3	5	4	5	0	1	30*
George Washington	3-7	0-3	0-2	0-1-1	4	6	3	5	0	1	31*
Iowa	7-14	0-1	2-2	0-6-6	0	16	6	6	0	2	33*
UT Martin	4-10	3-6	0-0	1-3-4	3	11	1	3	0	0	32*
UMBC	7-13	3-4	0-0	4-3-7	4	17	2	5	0	1	36*
Miami (OH)	DNP—CLASS										
Penn St. Beaver	8-10	0-0	6-6	3-2-5	2	22	3	5	0	1	27*
Ball State	8-17	2-5	0-2	2-3-5	5	18	3	2	2	1	29*
Winthrop	8-20	0-4	2-2	1-2-3	2	18	2	4	2	1	40*
Radford	3-13	0-3	1-1	3-0-3	5	7	0	0	0	1	26*
Coastal Carolina	2-4	0-2	0-0	0-1-1	2	4	3	3	1	0	23*
Charleston Southern	4-14	2-7	0-0	3-3-6	1	10	3	5	0	2	29
Presbyterian	3-14	0-1	1-3	5-4-9	4	7	3	3	1	3	36*
Liberty	13-23	4-10	1-4	3-5-8	1	31	5	4	0	3	38*
High Point	2-11	0-5	1-2	2-3-5	2	5	4	1	1	2	35*
Gardner-Webb	8-17	1-5	2-2	2-5-7	3	19	4	5	1	2	32*
UNC Asheville	4-12	1-4	2-2	2-3-5	2	11	1	4	0	1	24*
Presbyterian											
Gardner-Webb											
UNC Asheville											
Radford											
Charleston Southern											
Liberty											
Winthrop											
Coastal Carolina											
Campbell											



**CAREER HIGHS**

Points	31	vs. Liberty	1-17-15
Rebounds	9 (3x)	vs. Presbyterian	1-14-15
Assists	6 (2x)	vs. Iowa	11-29-14
Steals	3 (2x)	vs. Liberty	1-17-15
Blocks	2 (3x)	vs. Winthrop	12-31-14
FG Made	13	vs. Liberty	1-17-15
3FG Made	4	vs. Liberty	1-17-15
FT Made	11	vs. Dartmouth	12-3-14
Minutes	40	vs. Winthrop	12-31-14

**Career Stats**

Year	GP-GS	Min	Avg.	FG-A	FG%	3FG-A	3FG%	FT-A	FT%	O-D-T	Avg.	PF-DQ	A	TO	B	S	Pts	Avg	
2012-13 (Auburn)	32-21	594	18.6	54-131	.412	15-56	.268	45-65	.692	34-63-97	3.0	61-1	41	34	9	19	168	5.3	
2013-14	PLAYED AT NORTHWEST FLORIDA COMMUNITY COLLEGE																		
2014-15	21-20	664	31.6	110-263	.418	22-84	.262	34-48	.708	37-60-97	4.6	59-2	67	77	8	26	276	13.1	
<b>CAREER (Division I)</b>	<b>53-41</b>	<b>1258</b>	<b>23.7</b>	<b>164-394</b>	<b>.416</b>	<b>37-140</b>	<b>.264</b>	<b>79-113</b>	<b>.699</b>	<b>71-123-194</b>	<b>3.6</b>	<b>120-3</b>	<b>108</b>	<b>111</b>	<b>17</b>	<b>45</b>	<b>444</b>	<b>8.4</b>	



**#10**

**LOTANNA NWOGBO**

**R-Junior • 6-8 • 255 • Forward/Center**

**Lithonia, Ga.**

**Mount Vernon Presbyterian School / Tulane**

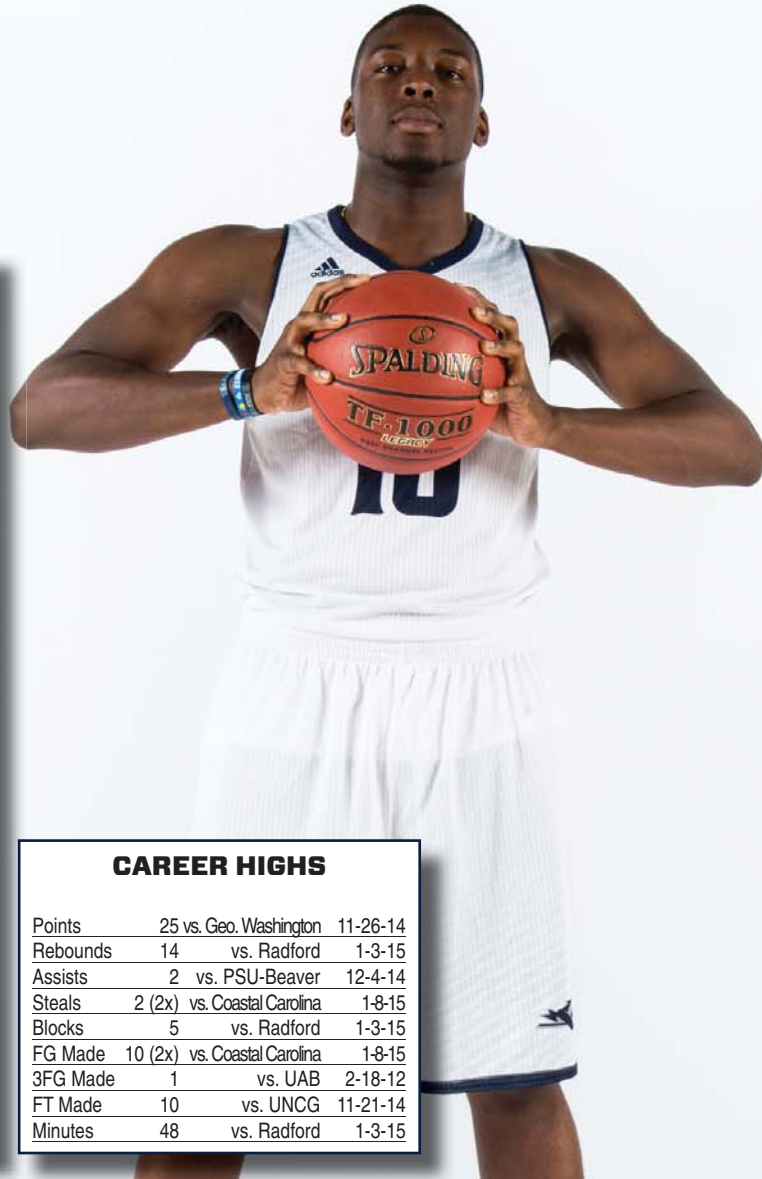
**Major: Kinesiology**

**2014-15**

- Elected team captain by his teammates
- Out 4-6 weeks following thumb surgery ... expected to return in time for the Big South Tournament
- Double-figure scorer in 12 of 17 games
- Has led Longwood in rebounds 14 times

**2014-15 Game Log**

Opp	FG-A	3FG-A	FT-A	O-D-T	PF	TP	A	TO	B	S	Min
Averett	5-7	0-0	3-4	2-4-6	4	13	0	3	0	1	29*
James Madison	5-6	0-0	2-2	3-4-7	3	12	0	3	1	0	31*
UNCG	4-11	0-0	10-11	3-9-12	5	18	0	2	0	1	33*
Youngstown State	8-10	0-0	0-0	4-4-8	4	16	0	3	2	2	37*
Eastern Michigan	5-11	0-0	4-4	2-4-6	3	14	0	1	2	1	29*
UMBC	3-8	0-0	0-0	5-2-7	3	6	1	3	0	0	20*
Miami (OH)	3-7	0-0	5-8	3-6-9	3	11	0	4	0	0	35*
Penn. St. Beaver	6-8	0-0	4-7	1-3-4	1	16	2	2	2	1	23*
Ball State	3-7	0-0	0-0	2-6-8	4	6	1	3	1	0	31*
Winthrop	6-11	0-1	6-8	5-7-12	5	18	0	5	0	0	37*
Radford	6-9	0-0	5-8	5-9-14	3	17	1	4	5	1	48*
Coastal Carolina	10-14	0-0	3-5	5-5-10	3	23	0	4	1	2	33*
Charleston Southern	1-4	0-0	0-0	2-1-3	1	2	0	1	1	1	14*
Presbyterian				DNP — INJURY							
Liberty				DNP — INJURY							
High Point				DNP — INJURY							
Gardner-Webb				DNP — INJURY							
UNC Asheville				DNP — INJURY							
Presbyterian											
Gardner-Webb											
UNC Asheville											
Radford											
Charleston Southern											
Liberty											
Winthrop											
Coastal Carolina											
Campbell											



**CAREER HIGHS**

Points	25 vs. Geo. Washington	11-26-14
Rebounds	14 vs. Radford	1-3-15
Assists	2 vs. PSU-Beaver	12-4-14
Steals	2 (2x) vs. Coastal Carolina	1-8-15
Blocks	5 vs. Radford	1-3-15
FG Made	10 (2x) vs. Coastal Carolina	1-8-15
3FG Made	1 vs. UAB	2-18-12
FT Made	10 vs. UNCG	11-21-14
Minutes	48 vs. Radford	1-3-15

**Career Stats**

Year	GP-GS	Min	Avg.	FG-A	FG%	3FG-A	3FG%	FT-A	FT%	O-D-T	Avg.	PF-DQ	A	TO	B	S	Pts	Avg
2011-12 (Tulane)	23-2	168	7.3	27-48	.563	1-2	.500	5-12	.417	10-13-23	1.0	33-0	2	11	3	3	60	2.6
2012-13 (Tulane)	24-0	100	4.2	10-27	.370	0-0	.000	7-14	.500	20-17-37	1.5	22-0	2	6	4	5	27	1.1
2013-14																		
DID NOT PLAY — NCAA Transfer rules																		
2014-15	17-17	512	30.1	83-137	.606	0-1	.000	53-74	.716	54-85-139	8.2	59-3	6	50	15	12	219	12.9
<b>CAREER</b>	<b>64-19</b>	<b>780</b>	<b>12.2</b>	<b>120-212</b>	<b>.566</b>	<b>1-3</b>	<b>.333</b>	<b>65-100</b>	<b>.650</b>	<b>84-115-199</b>	<b>3.1</b>	<b>114-3</b>	<b>10</b>	<b>67</b>	<b>21</b>	<b>19</b>	<b>285</b>	<b>4.5</b>



**#3**

**DARRION ALLEN**

**Sophomore • 6-2 • 165 • Guard**

**Pompano Beach, Fla.**

**Blanche Ely**

**Major: Undecided**

**2014-15**

- A slasher and lockdown defender on the perimeter
- Can play the point, two or three spots
- Back-to-back 20-point games against James Madison and Youngstown State
- Hit game-winning three-pointer in overtime against UNCG ... scored a career-high 22 against the Spartans

**2014-15 Game Log**

Opp	FG-A	3FG-A	FT-A	O-D-T	PF	TP	A	TO	B	S	Min
Averett	2-8	0-3	2-2	2-2-4	4	8	4	1	0	3	33*
James Madison	7-15	1-4	5-8	4-0-4	0	20	2	2	0	1	33*
UNCG	7-14	4-8	4-4	2-1-3	1	22	0	2	1	1	36*
Youngstown State	1-3	0-1	0-0	0-4-4	3	2	0	2	0	2	30*
Eastern Michigan	0-1	0-1	0-0	0-0-0	1	0	1	1	0	1	17*
George Washington	3-5	1-1	1-2	2-1-3	4	8	1	0	1	0	21*
Iowa	0-4	0-2	0-0	0-0-0	1	0	1	1	0	0	18*
Dartmouth	1-5	0-2	0-0	2-0-2	1	2	1	2	0	1	16*
UT Martin	0-3	0-1	0-0	0-0-0	0	0	1	1	0	1	12*
UMBC	2-6	0-1	0-0	1-0-1	1	4	0	0	1	1	18
Miami (OH)	4-8	0-1	2-2	3-1-4	4	10	1	2	1	0	29
Penn St. Beaver	1-3	0-0	0-0	2-0-2	0	2	2	0	1	2	18
Ball State	1-2	1-1	0-0	1-2-3	0	3	1	3	0	1	17*
Winthrop	2-3	0-0	0-0	0-2-2	4	4	0	1	0	2	33
Radford	DNP — ILLNESS										
Coastal Carolina	2-5	1-2	0-0	0-2-2	4	5	1	0	1	0	17*
Charleston Southern	1-5	1-4	2-2	0-1-1	3	5	2	1	0	1	20*
Presbyterian	1-6	0-3	0-0	2-1-3	1	2	0	0	2	0	22*
Liberty	0-4	0-1	2-2	1-3-4	3	2	1	0	1	0	14
High Point	3-7	0-1	1-1	0-4-4	2	7	0	1	0	1	19
Gardner-Webb	2-5	0-1	0-0	1-2-3	0	4	2	2	0	0	19
UNC Asheville	3-7	1-1	0-0	2-2-4	5	7	0	0	1	2	18
Presbyterian											
Gardner-Webb											
UNC Asheville											
Radford											
Charleston Southern											
Liberty											
Winthrop											
Coastal Carolina											
Campbell											



**CAREER HIGHS**

Points	22	vs. UNCG	11-21-14
Rebounds	4 (6x)	vs. UNC Asheville	1-28-15
Assists	3 (2x)	vs. Averett	11-14-14
Steals	2 (6x)	vs. UNC Asheville	1-28-15
Blocks	2 (8x)	vs. Presbyterian	1-14-15
FG Made	7 (2x)	vs. UNCG	11-21-14
3FG Made	4	vs. Youngstown St.	11-22-14
FT Made	5	vs. James Madison	11-19-14
Minutes	36	vs. UNCG	11-21-14

**Career Stats**

Year	GP-GS	Min	Avg.	FG-A	FG%	3FG-A	3FG%	FT-A	FT%	O-D-T	Avg.	PF-DQ	A	TO	B	S	Pts	Avg
2013-14	30-6	573	19.1	65-160	.406	7-38	.184	31-40	.775	18-31-49	1.6	46-0	26	32	5	12	168	5.6
2014-15	21-14	460	21.9	43-119	.361	10-39	.256	19-23	.826	24-28-52	2.5	40-1	20	21	11	18	115	5.5
<b>CAREER</b>	<b>51-20</b>	<b>1033</b>	<b>20.3</b>	<b>108-279</b>	<b>.387</b>	<b>17-77</b>	<b>.221</b>	<b>50-63</b>	<b>.794</b>	<b>42-59-101</b>	<b>2.0</b>	<b>86-1</b>	<b>46</b>	<b>53</b>	<b>16</b>	<b>30</b>	<b>283</b>	<b>5.5</b>



**#15**

**ISAAC BELTON**

**Sophomore • 6-4 • 205 • Guard**

**Salem, Va.**

**Virginia Episcopal School**

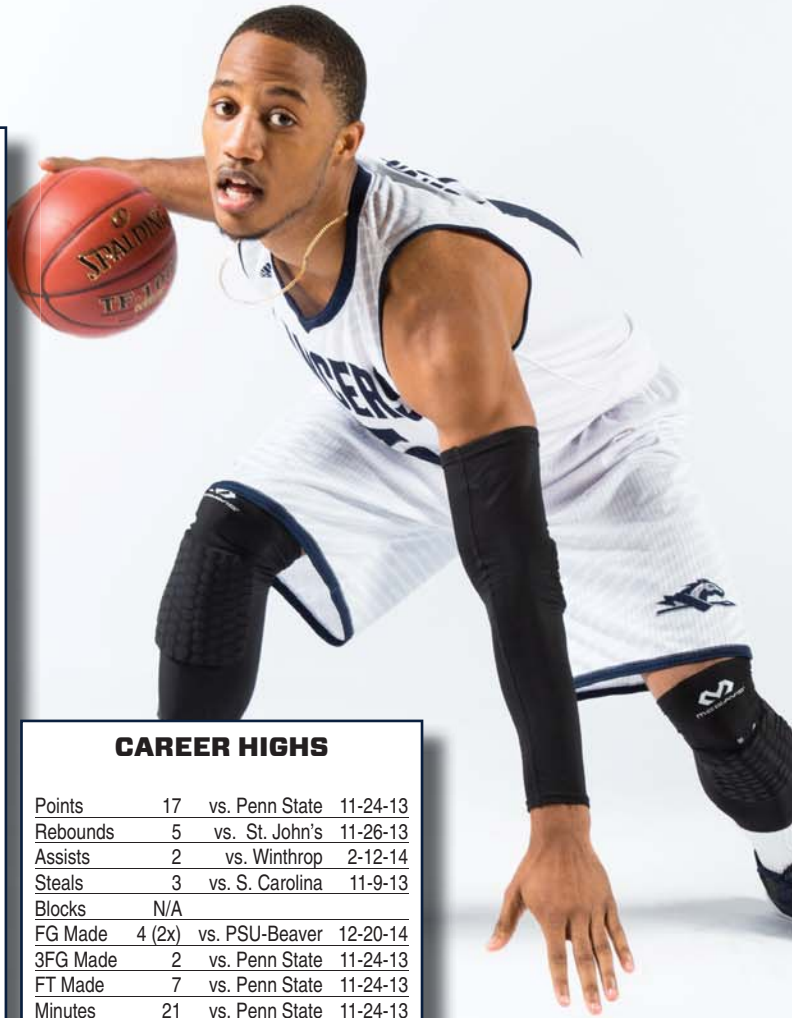
**Major: Undecided**

**2014-15**

- Can play the two, three or four positions
- Skilled at drawing contact and getting to the free throw line
- High-energy presence on the floor and a respected locker room motivator

**2014-15 Game Log**

Opp	FG-A	3FG-A	FT-A	O-D-T	PF	TP	A	TO	B	S	Min
Averett	2-3	0-1	1-2	1-2-3	0	5	0	0	0	0	3
James Madison	1-3	1-3	0-0	0-2-2	2	3	0	1	0	0	8
UNCG				DNP							
Youngstown State				DNP							
Eastern Michigan	1-4	1-2	0-0	1-0-1	0	3	1	1	0	0	4
George Washington	0-0	0-0	0-0	0-0-0	0	0	0	0	0	0	1
Iowa	0-0	0-0	0-0	0-0-0	0	0	0	1	0	0	2
Dartmouth				DNP							
UT Martin	0-1	0-1	0-0	0-0-0	0	0	0	0	0	0	0+
UMBC				DNP							
Miami (OH)				DNP							
Penn St. Beaver	4-8	0-2	0-0	0-0-0	0	8	1	0	0	1	9
Ball State				DNP							
Winthrop				DNP							
Radford				DNP							
Coastal Carolina				DNP							
Charleston Southern	0-0	0-0	0-0	0-0-0	0	0	0	0	0	0	1
Presbyterian	0-0	0-0	0-0	0-0-0	0	0	0	0	0	0	0+
Liberty	1-1	1-1	0-0	0-0-0	1	3	0	0	0	1	4
High Point				DNP							
Gardner-Webb	0-0	0-0	0-0	0-0-0	0	0	0	0	0	0	1
UNC Asheville	0-0	0-0	0-0	0-0-0	0	0	0	0	0	0	3
Presbyterian											
Gardner-Webb											
UNC Asheville											
Radford											
Charleston Southern											
Liberty											
Winthrop											
Coastal Carolina											
Campbell											



**CAREER HIGHS**

Points	17	vs. Penn State	11-24-13
Rebounds	5	vs. St. John's	11-26-13
Assists	2	vs. Winthrop	2-12-14
Steals	3	vs. S. Carolina	11-9-13
Blocks	N/A		
FG Made	4 (2x)	vs. PSU-Beaver	12-20-14
3FG Made	2	vs. Penn State	11-24-13
FT Made	7	vs. Penn State	11-24-13
Minutes	21	vs. Penn State	11-24-13

**Career Stats**

Year	GP-GS	Min	Avg.	FG-A	FG%	3FG-A	3FG%	FT-A	FT%	O-D-T	Avg.	PF-DQ	A	TO	S	B	Pts	Avg
2013-14	29-0	225	7.8	16-67	.239	5-29	.172	35-47	.745	5-27-32	1.1	35-0	7	11	0	8	72	2.5
2014-15	12-0	36	3.0	9-20	.450	3-10	.300	1-2	.500	2-4-6	0.5	3-0	2	3	0	2	22	1.8
<b>CAREER</b>	<b>41-0</b>	<b>261</b>	<b>6.4</b>	<b>25-87</b>	<b>.287</b>	<b>8-39</b>	<b>.205</b>	<b>36-49</b>	<b>.735</b>	<b>7-31-38</b>	<b>0.9</b>	<b>38-0</b>	<b>9</b>	<b>14</b>	<b>0</b>	<b>10</b>	<b>94</b>	<b>2.3</b>



**#24**

**DAMARION GETTER**

**Sophomore • 6-7 • 215 • Forward**

**Dayton, Ohio**

**Dunbar**

**Major: Undecided**

**2014-15**

- Voted team captain by his teammates
- Labeled a “point forward” by the coaching staff
- Has the ability to bring the ball up the floor and run the offense
- Credited by the coaching staff as the highest basketball IQ on the team

**2014-15 Game Log**

Opp	FG-A	3FG-A	FT-A	O-D-T	PF	TP	A	TO	B	S	Min
Averett	2-2	0-0	0-0	2-2-4	3	4	4	0	2	1	29*
James Madison	0-0	0-0	0-0	0-0-0	2	0	0	2	0	1	28*
UNCG	0-0	0-0	1-3	2-7-9	3	1	6	2	1	2	39*
Youngstown State	1-2	0-0	0-0	0-1-1	2	2	0	2	0	0	22*
Eastern Michigan	0-0	0-0	0-0	1-2-3	3	0	0	1	1	0	13*
George Washington	1-1	0-0	0-0	1-2-3	5	2	3	1	1	1	27*
Iowa	1-1	0-0	1-2	0-4-4	2	3	0	3	0	1	19*
Dartmouth	1-1	0-0	1-2	1-0-1	3	3	1	1	1	0	29*
UT Martin	0-3	0-0	0-2	3-2-5	1	0	1	2	1	1	37*
UMBC	2-3	0-0	0-0	1-5-6	4	4	0	2	0	2	27*
Miami (OH)	0-1	0-0	0-0	1-4-5	4	0	0	1	1	0	17*
Penn St. Beaver	1-1	0-0	2-2	3-5-8	2	4	3	2	2	2	25*
Ball State	0-0	0-0	0-0	0-4-4	5	0	1	1	1	0	27*
Winthrop	0-0	0-0	0-0	1-2-3	3	0	0	0	1	0	13
Radford	0-1	0-0	0-0	1-2-3	3	0	2	1	0	0	21
Coastal Carolina	1-1	0-0	0-0	0-3-3	3	2	2	0	1	1	16
Charleston Southern	0-0	0-0	0-0	2-4-6	0	0	2	2	1	1	29*
Presbyterian	4-6	0-0	0-0	3-3-6	4	8	1	0	3	2	24*
Liberty	0-3	0-0	0-0	0-4-4	4	0	1	0	0	0	24*
High Point	2-2	0-0	0-0	2-4-6	4	4	4	0	0	1	32*
Gardner-Webb	1-2	0-0	0-0	2-6-8	4	2	2	1	0	1	29*
UNC Asheville	1-2	0-0	0-0	2-3-5	3	2	0	0	0	1	32*
Presbyterian											
Gardner-Webb											
UNC Asheville											
Radford											
Charleston Southern											
Liberty											
Winthrop											
Coastal Carolina											
Campbell											



**CAREER HIGHS**

Points	8	vs. Presbyterian	1-14-15
Rebounds	9	vs. UNCG	11-21-14
Assists	6	vs. UNCG	11-21-14
Steals	2 (6x)	vs. Presbyterian	1-14-15
Blocks	3	vs. Presbyterian	1-14-15
FG Made	4	vs. Presbyterian	1-14-15
3FG Made	N/A		
FT Made	2	vs. PSU-Beaver	12-20-14
Minutes	39	vs. UNCG	11-21-14

**Career Stats**

Year	GP-GS	Min	Avg.	FG-A	FG%	3FG-A	3FG%	FT-A	FT%	O-D-T	Avg.	PF-DQ	A	TO	S	B	Pts	Avg
2013-14	32-5	614	19.2	33-58	.569	0-0	.000	3-14	.214	38-66-104	3.3	102-6	31	40	15	14	69	2.2
2014-15	22-19	559	25.4	18-32	.563	0-0	.000	5-11	.455	28-69-97	4.4	67-2	33	24	17	18	41	1.9
<b>CAREER</b>	<b>54-24</b>	<b>1173</b>	<b>21.7</b>	<b>51-90</b>	<b>.567</b>	<b>0-0</b>	<b>.000</b>	<b>8-25</b>	<b>.320</b>	<b>66-135-201</b>	<b>3.7</b>	<b>169-8</b>	<b>64</b>	<b>64</b>	<b>32</b>	<b>32</b>	<b>110</b>	<b>2.0</b>





**#23**

**RYAN BADOWSKI**

**Freshman • 6-3 • 185 • Guard**

**Cleveland, Ohio**

**Brunswick**

**Major: Undecided**



**2014-15**

- Deemed by the coaching staff as one of the toughest players on the team
- Sharp shooting stroke with deep range
- Leading freshman scorer in the Big South
- Two-time Big South Freshman of the Week

**2014-15 Game Log**

Opp	FG-A	3FG-A	FT-A	O-D-T	PF	TP	A	TO	B	S	Min
Averett	7-12	7-12	0-0	0-4-4	3	21	2	0	0	1	20
James Madison	3-10	3-10	0-0	1-1-2	2	9	1	0	0	1	30
UNCG	6-13	3-10	0-2	0-2-2	0	15	0	0	0	0	27
Youngstown St.	3-8	1-6	2-4	0-1-1	4	9	0	2	0	1	15
Eastern Michigan	4-10	3-9	1-1	2-2-4	2	12	0	2	0	1	24
George Washington	3-8	2-6	0-0	1-1-2	2	8	0	1	0	0	20
Iowa	0-5	0-3	2-2	0-2-2	1	2	0	0	0	0	25
Dartmouth	1-3	1-2	0-0	0-1-1	3	3	1	0	0	1	26
UT Martin	2-3	2-3	0-2	0-0-0	3	6	0	1	0	1	17
UMBC	0-4	0-3	0-0	0-0-0	0	0	0	0	1	2	13
Miami (OH)	3-5	1-3	5-8	0-5-5	3	12	1	3	0	1	29
Penn St. Beaver	4-7	3-5	6-7	3-4-7	0	17	0	3	0	1	22
Ball State	3-7	3-6	2-2	1-3-4	3	11	0	1	0	1	27
Winthrop	3-9	3-7	0-0	2-4-6	1	9	0	0	0	1	27*
Radford	7-8	5-6	3-3	1-4-5	2	22	0	2	0	1	45*
Coastal Carolina	2-4	2-4	0-0	0-1-1	3	6	1	1	0	1	23*
Charleston Southern	2-5	1-3	1-2	0-0-0	4	6	1	1	0	0	30*
Presbyterian	2-9	2-7	0-0	0-1-1	2	6	0	0	0	1	19*
Liberty	5-6	5-6	0-0	0-2-2	3	15	2	0	0	2	25*
High Point	3-5	1-2	2-2	1-4-5	1	9	1	2	0	0	22*
Gardner-Webb	2-6	1-4	1-2	0-6-6	4	6	0	1	0	1	32*
UNC Asheville	0-6	0-4	0-0	1-4-5	4	0	0	1	0	0	32*
Presbyterian											
Gardner-Webb											
UNC Asheville											
Radford											
Charleston Southern											
Liberty											
Winthrop											
Coastal Carolina											
Campbell											

**CAREER HIGHS**

Points	22	vs. Radford	1-3-15
Rebounds	7	vs. PSU-Beaver	12-20-14
Assists	2 (2x)	vs. Liberty	1-17-15
Steals	2 (2x)	vs. Liberty	1-17-15
Blocks	1	vs. UMBC	12-14-14
FG Made	7 (2x)	vs. Radford	1-3-15
3FG Made	7	vs. Averett	11-11-14
FT Made	6	vs. PSU-Beaver	12-20-14
Minutes	45	vs. Radford	1-3-15

**Career Stats**

Year	GP-GS	Min	Avg.	FG-A	FG%	3FG-A	3FG%	FT-A	FT%	O-D-T	Avg.	PF-DQ	A	TO	S	B	Pts	Avg
2014-15	22-9	551	25.0	65-153	.425	49-121	.405	25-37	.676	13-52-65	3.0	50-0	10	21	1	18	204	9.3
<b>CAREER</b>	<b>22-9</b>	<b>551</b>	<b>25.0</b>	<b>65-153</b>	<b>.425</b>	<b>49-121</b>	<b>.405</b>	<b>25-37</b>	<b>.676</b>	<b>13-52-65</b>	<b>3.0</b>	<b>50-0</b>	<b>10</b>	<b>21</b>	<b>1</b>	<b>18</b>	<b>204</b>	<b>9.3</b>



**#14**

**VICTOR DORSEY**

**Freshman • 6-9 • 200 • Forward**

**Akron, Ohio**  
**Akron Springfield**  
**Major: Undecided**



**2014-15**

- Big, strong post player who can set screens, post up, and step out and shoot
- Will play off the bench as a freshman, capable of stepping in at the four and five spots
- Grabbed eight rebounds in third career game

**2014-15 Game Log**

Opp	FG-A	3FG-A	FT-A	O-D-T	PF	TP	A	TO	B	S	Min
Averett				DNP							
James Madison				DNP							
UNCG	0-0	0-0	0-0	0-0-0	0	0	0	0	0	0	2
Youngstown State	0-0	0-0	0-0	0-0-0	0	0	0	0	0	0	1
Eastern Michigan	1-3	0-0	0-0	0-8-8	3	2	0	4	0	0	17
George Washington	0-1	0-0	0-0	0-0-0	2	0	0	0	0	0	6
Iowa	0-1	0-0	0-0	0-1-1	1	0	0	0	0	0	2
Dartmouth	0-1	0-0	0-1	1-0-1	1	0	0	0	1	0	3
UT Martin	1-1	0-0	2-2	2-0-2	3	4	0	0	0	0	6
UMBC	0-1	0-0	0-0	1-1-2	1	0	0	0	0	0	7
Miami (OH)				DNP							
Penn St. Beaver	3-4	0-0	0-0	0-1-1	0	6	0	1	0	1	8
Ball State				DNP — ILLNESS							
Winthrop				DNP — ILLNESS							
Radford				DNP							
Coastal Carolina	0-0	0-0	1-2	0-1-1	2	1	1	0	0	0	6
Charleston Southern	0-2	0-1	2-2	2-0-2	1	2	0	0	0	0	7
Presbyterian	2-2	0-0	0-0	1-3-4	2	4	1	2	2	1	19
Liberty	0-1	0-0	0-2	1-1-2	4	0	0	1	0	0	14
High Point	0-0	0-0	0-0	1-0-1	2	0	0	1	0	0	11
Gardner-Webb	3-5	0-0	0-0	1-2-3	2	6	0	0	0	0	18
UNC Asheville	1-4	0-0	0-0	1-2-3	2	0	1	0	0	0	20
Presbyterian											
Gardner-Webb											
UNC Asheville											
Radford											
Charleston Southern											
Liberty											
Winthrop											
Coastal Carolina											
Campbell											

**CAREER HIGHS**

Points	6 (2x)	vs. Gardner-Webb	1-22-15
Rebounds	8	vs. E. Michigan	11-23-14
Assists	1 (2x)	vs. Presbyterian	1-14-15
Steals	1 (2x)	vs. Presbyterian	1-14-15
Blocks	2	vs. Presbyterian	1-14-15
FG Made	3 (2x)	vs. Gardner-Webb	1-22-15
3FG Made	N/A		
FT Made	2	vs. UT Martin	12-6-14
Minutes	19	vs. Presbyterian	1-14-15

**Career Stats**

Year	GP-GS	Min	Avg.	FG-A	FG%	3FG-A	3FG%	FT-A	FT%	O-D-T	Avg.	PF-DQ	A	TO	S	B	Pts	Avg
2014-15	16-0	147	9.2	11-26	.423	0-1	.000	5-9	.556	11-20-31	1.9	26-0	2	10	3	2	27	1.7
<b>CAREER</b>	<b>16-0</b>	<b>147</b>	<b>9.2</b>	<b>11-26</b>	<b>.423</b>	<b>0-1</b>	<b>.000</b>	<b>5-9</b>	<b>.556</b>	<b>11-20-31</b>	<b>1.9</b>	<b>26-0</b>	<b>2</b>	<b>10</b>	<b>3</b>	<b>2</b>	<b>27</b>	<b>1.7</b>



**#11**

**KANAYO OBI-RAPU, Jr.**

**Freshman • 6-3 • 190 • Guard**

**Greensboro, N.C.**  
**New Garden Friends**  
**Major: Undecided**



**2014-15**

- Talented guard who was sought after by several top-end Division I programs coming out of high school
- Owns a versatile skillset with the ability to pass, shoot, slash and defend
- Registered first double-figure scoring game against Youngstown State, hitting 3-of-4 three-pointers and 4-of-5 shots from the field (11/22)

**2014-15 Game Log**

Opp	FG-A	3FG-A	FT-A	O-D-T	PF	TP	A	TO	B	S	Min
Averett	3-5	2-3	0-0	0-4-4	4	8	4	1	0	3	25
James Madison	0-6	0-6	0-0	0-3-3	4	0	0	3	0	0	15
UNCG	0-3	0-1	0-0	0-4-4	1	0	0	5	0	1	14
Youngstown State	4-5	3-4	0-0	1-1-2	5	11	0	0	0	0	14
Eastern Michigan	0-3	0-3	1-2	0-1-1	3	1	1	2	0	1	17
George Washington	1-4	1-3	0-0	0-3-3	0	3	0	4	0	0	12
Iowa	0-0	0-0	0-0	0-3-3	1	0	0	0	0	1	12
Dartmouth	1-5	1-4	1-3	1-2-3	0	4	0	0	0	0	22
UT Martin	1-6	0-3	0-0	0-4-4	1	2	2	1	0	0	18
UMBC	1-3	0-1	0-0	0-0-0	1	2	0	1	0	0	8
Miami (OH)	2-6	2-5	1-2	1-3-4	2	7	3	2	0	1	28*
Penn St. Beaver	2-4	0-1	0-1	0-4-4	5	4	2	3	0	2	16
Ball State	1-2	0-1	0-0	0-2-2	1	2	0	1	0	0	10
Winthrop	1-3	1-3	0-0	1-0-1	1	3	0	2	0	0	8
Radford	3-5	1-2	1-1	1-2-3	3	8	0	1	0	0	23
Coastal Carolina	1-1	1-1	0-2	0-1-1	3	3	0	2	1	0	19
Charleston Southern	1-4	1-3	0-0	0-3-3	3	3	1	0	0	0	14
Presbyterian	3-6	2-4	0-0	0-1-1	3	8	1	1	0	0	11
Liberty	1-2	1-1	0-0	0-0-0	3	3	2	0	0	0	23
High Point	4-7	3-6	0-0	0-2-2	1	11	2	1	1	1	16
Gardner-Webb	DNP — INJURY										
UNC Asheville	2-5	1-2	1-1	0-1-1	2	6	0	1	0	1	11
Presbyterian											
Gardner-Webb											
UNC Asheville											
Radford											
Charleston Southern											
Liberty											
Winthrop											
Coastal Carolina											

**CAREER HIGHS**

Points	11 (2x)	at High Point	1-19-15
Rebounds	5	vs. Averett	11-14-14
Assists	4	vs. Averett	11-14-14
Steals	3	vs. Averett	11-14-14
Blocks	1 (2x)	at High Point	1-19-15
FG Made	4	vs. Youngstown St.	11-22-14
3FG Made	3 (2x)	at High Point	1-19-15
FT Made	1 (4x)	vs. Radford	1-3-15
Minutes	28	vs. Miami (OH)	12-17-14

**Career Stats**

Year	GP-GS	Min	Avg.	FG-A	FG%	3FG-A	3FG%	FT-A	FT%	O-D-T	Avg.	PF-DQ	A	TO	S	B	Pts	Avg
2014-15	21-1	331	15.8	32-85	.376	20-57	.351	5-12	.417	5-44-49	2.3	47-2	18	31	2	11	89	4.2
<b>CAREER</b>	<b>21-1</b>	<b>331</b>	<b>15.8</b>	<b>32-85</b>	<b>.376</b>	<b>20-57</b>	<b>.351</b>	<b>5-12</b>	<b>.417</b>	<b>5-44-49</b>	<b>2.3</b>	<b>47-2</b>	<b>18</b>	<b>31</b>	<b>2</b>	<b>11</b>	<b>89</b>	<b>4.2</b>



**#2**

**BRYAN GEE**

**Freshman • 6-0 • 175 • Guard**

**Cleveland, Ohio**

**Cornerstone Christian Academy**

**Major: Undecided**

**2014-15**

- Skilled point guard with a head for the game
- Will redshirt his freshman season
- Middle son of Longwood head coach Jayson Gee



**#4**

**KHRIS LANE**

**Sophomore • 6-6 • 225 • Forward**

**Richmond, Va.**

**Benedictine / Drexel**

**Major: Undecided**

**2014-15**

- Will sit out the 2014-15 season due to NCAA transfer rules following his transfer from Drexel
- Extremely athletic wing with a knack for scoring
- Most effective in the post, capable of scoring with his back to the basket or face-up ... also a dangerous drop-off passer in the post
- Named to the All-Tournament Team at the Bullis Holiday Tournament, the Richmond Times Dispatch Tournament and the Benedictine Holiday Tournament



**#0**

**TRA'VAUGHN WHITE**

**Junior • 5-10 • 190 • Guard**

**Kansas City, Kan.**

**Washington (HS) / Duquesne**

**Major: Undecided**

**2014-15**

- Will sit out the 2014-15 season due to NCAA transfer rules following transfer from Duquesne
- Strong, physically tough player capable of playing either guard position
- Was the top junior college scorer in the nation at Independence Community College in 2012-13

# LONGWOOD GAMEDAY > Overall Stats

## The Automated ScoreBook Longwood Combined Team Statistics (as of Jan 28, 2015) All games

RECORD:	OVERALL	HOME	AWAY	NEUTRAL
ALL GAMES	6-16	5-3	0-12	1-1
CONFERENCE	2-7	2-2	0-5	0-0
NON-CONFERENCE	4-9	3-1	0-7	1-1

#	Player	gp-gs	min	avg	Total		3-Point		F-Throw		Rebounds				pf	dq	a	to	blk	stl	pts	avg			
					fg-fga	fg%	3fg-fga	3fg%	ft-fga	ft%	off	def	tot	avg											
25	TAYLOR, Quincy	19-19	666	35.1	111-262	.424	51-101	.505	43-62	.694	7	46	53	2.8	52	0	48	57	2	24	316	16.6			
21	JOHNSON, Shaquille	21-20	664	31.6	110-263	.418	22-84	.262	34-48	.708	37	60	97	4.6	59	2	67	77	8	26	276	13.1			
10	NWOGBO, Lotanna	17-17	512	30.1	83-137	.606	0-1	.000	53-74	.716	54	85	139	8.2	59	3	6	50	15	12	219	12.9			
23	BADOWSKI, Ryan	22-9	551	25.0	65-153	.425	49-121	.405	25-37	.676	13	52	65	3.0	50	0	10	21	1	18	204	9.3			
01	FISHER, Leron	22-11	558	25.4	56-152	.368	19-59	.322	65-83	.783	10	43	53	2.4	46	0	50	42	3	43	196	8.9			
03	ALLEN, Darrion	21-14	460	21.9	43-119	.361	10-39	.256	19-23	.826	24	28	52	2.5	40	1	20	21	11	18	115	5.5			
11	OBI-RAPU, Kanayo	21-1	331	15.8	32-85	.376	20-57	.351	5-12	.417	5	44	49	2.3	47	2	18	31	2	11	89	4.2			
24	GETER, Damarion	22-19	559	25.4	18-32	.563	0-0	.000	5-11	.455	28	69	97	4.4	67	2	33	24	17	18	41	1.9			
15	BELTON, Isaac	12-0	36	3.0	9-20	.450	3-10	.300	1-2	.500	2	4	6	0.5	3	0	2	3	0	2	22	1.8			
14	DORSEY, Victor	16-0	147	9.2	11-26	.423	0-1	.000	5-9	.556	11	20	31	1.9	26	0	2	10	3	2	27	1.7			
30	AKERS, Tyler	7-0	16	2.3	1-4	.250	0-3	.000	3-4	.750	1	1	2	0.3	1	0	1	3	0	0	5	0.7			
Team											35	36	71												5
Total.....		0	4500	539-1253		.430	174-476	.366	258-365	.707	227	488	715	0.0	450	10	257	344	62	174	1510	0.0			
Opponents.....		0	4500	552-1195		.462	152-416	.365	381-558	.683	262	547	809	0.0	356	-	312	339	81	204	1637	0.0			

TEAM STATISTICS	LWU	OPP	Date	Opponent	Score	Att.
SCORING	1510	1637	11-14-14	AVERETT	W 79-53	1034
Points per game	68.6	74.4	11-19-14	at James Madison	L 60-82	2877
Scoring margin	-5.8	-	! 11-21-14	vs UNC Greensboro	Wot 81-79	680
FIELD GOALS-ATT	539-1253	552-1195	! 11-22-14	vs Youngstown State	L 72-82	624
Field goal pct	.430	.462	! 11-23-14	at Eastern Michigan	L 48-79	395
3 POINT FG-ATT	174-476	152-416	11-26-14	at George Washington	L 66-91	1897
3-point FG pct	.366	.365	11-29-14	at Iowa	L 44-77	13819
3-pt FG made per game	7.9	6.9	12-03-14	DARTMOUTH	W 74-73	1524
FREE THROWS-ATT	258-365	381-558	12-06-14	UT MARTIN	L 67-77	1038
Free throw pct	.707	.683	12-14-14	at UMBC	L 53-58	631
F-Throws made per game	11.7	17.3	12-17-14	at Miami	L 60-71	470
REBOUNDS	715	809	12-20-14	PENN STATE BEAVER	W 106-74	428
Rebounds per game	32.5	36.8	12-28-14	at Ball State	L 64-69	2276
Rebounding margin	-4.3	-	* 12-31-14	at Winthrop	Lot 72-82	1074
ASSISTS	257	312	* 01-03-15	RADFORD	Wo2 90-79	1802
Assists per game	11.7	14.2	* 01-08-15	at Coastal Carolina	L 70-76	1824
TURNOVERS	344	339	* 01-10-15	at Charleston So.	L 54-68	783
Turnovers per game	15.6	15.4	* 01-14-15	PRESBYTERIAN	L 67-71	1612
Turnover margin	-0.2	-	* 01-17-15	LIBERTY	W 85-71	1761
Assist/turnover ratio	0.7	0.9	* 01-19-15	at High Point	L 67-72	1750
STEALS	174	204	* 01-22-15	at Gardner-Webb	L 67-79	874
Steals per game	7.9	9.3	* 01-28-15	UNC ASHEVILLE	L 64-74	924
BLOCKS	62	81	* = Conference game			
Blocks per game	2.8	3.7				
ATTENDANCE	10123	29974				
Home games-Avg/Game	8-1265	12-2389				
Neutral site-Avg/Game	-	2-652				

Score by Periods	1st	2nd	OT	OT2	Totals
Longwood	661	798	30	21	1510
Opponents	758	831	38	10	1637

## The Automated ScoreBook Longwood Combined Team Statistics (as of Jan 28, 2015) Conference games

RECORD:	OVERALL	HOME	AWAY	NEUTRAL
ALL GAMES	2-7	2-2	0-5	0-0
CONFERENCE	2-7	2-2	0-5	0-0
NON-CONFERENCE	0-0	0-0	0-0	0-0

#	Player	gp-gs	min	avg	Total		3-Point		F-Throw		Rebounds					pts	avg					
					fg-fga	fg%	3fg-fga	3fg%	ft-fa	ft%	off	def	tot	avg	pf			dq	a	to	blk	stl
25	TAYLOR, Quincy	9-9	334	37.1	48-119	.403	25-48	.521	23-32	.719	0	22	22	2.4	25	0	21	29	0	9	144	16.0
10	NWOGBO, Lotanna	4-4	132	33.0	23-38	.605	0-1	.000	14-21	.667	17	22	39	9.8	12	1	1	14	7	4	60	15.0
01	FISHER, Leron	9-5	259	28.8	33-87	.379	11-35	.314	47-58	.810	4	24	28	3.1	20	0	23	15	2	21	124	13.8
21	JOHNSON, Shaquille	9-8	283	31.4	47-128	.367	8-41	.195	10-16	.625	21	26	47	5.2	22	1	25	29	6	15	112	12.4
23	BADOWSKI, Ryan	9-9	255	28.3	26-58	.448	20-43	.465	7-9	.778	5	26	31	3.4	24	0	5	8	0	7	79	8.8
11	OBI-RAPU, Kanayo	8-0	125	15.6	16-33	.485	11-22	.500	2-4	.500	2	10	12	1.5	19	0	6	8	2	2	45	5.6
03	ALLEN, Darrion	8-4	162	20.3	14-42	.333	3-13	.231	5-5	1.000	6	17	23	2.9	22	1	6	5	5	6	36	4.5
14	DORSEY, Victor	7-0	95	13.6	6-14	.429	0-1	.000	3-6	.500	7	9	16	2.3	15	0	2	5	2	1	15	2.1
24	GETER, Damarion	9-6	220	24.4	9-17	.529	0-0	.000	0-0	.000	13	31	44	4.9	28	0	14	4	6	7	18	2.0
15	BELTON, Isaac	5-0	9	1.8	1-1	1.000	1-1	1.000	0-0	.000	0	0	0	0.0	1	0	0	0	0	1	3	0.6
30	AKERS, Tyler	1-0	1	1.0	0-0	.000	0-0	.000	0-0	.000	0	0	0	0.0	0	0	0	0	0	0	0	0.0
Team											16	19	35				1					
Total.....		9	1875		223-537	.415	79-205	.385	111-151	.735	91	206	297	33.0	188	3	103	118	30	73	636	70.7
Opponents.....		9	1875		221-511	.432	61-174	.351	169-238	.710	125	241	366	40.7	143	-	130	132	41	72	672	74.7

TEAM STATISTICS	LWU	OPP	Date	Opponent	Score	Att.
SCORING	636	672	* 12-31-14	at Winthrop	Lot 72-82	1074
Points per game	70.7	74.7	* 01-03-15	RADFORD	Wo2 90-79	1802
Scoring margin	-4.0	-	* 01-08-15	at Coastal Carolina	L 70-76	1824
FIELD GOALS-ATT	223-537	221-511	* 01-10-15	at Charleston So.	L 54-68	783
Field goal pct	.415	.432	* 01-14-15	PRESBYTERIAN	L 67-71	1612
3 POINT FG-ATT	79-205	61-174	* 01-17-15	LIBERTY	W 85-71	1761
3-point FG pct	.385	.351	* 01-19-15	at High Point	L 67-72	1750
3-pt FG made per game	8.8	6.8	* 01-22-15	at Gardner-Webb	L 67-79	874
FREE THROWS-ATT	111-151	169-238	* 01-28-15	UNC ASHEVILLE	L 64-74	924
Free throw pct	.735	.710	* = Conference game			
F-Throws made per game	12.3	18.8				
REBOUNDS	297	366				
Rebounds per game	33.0	40.7				
Rebounding margin	-7.7	-				
ASSISTS	103	130				
Assists per game	11.4	14.4				
TURNOVERS	118	132				
Turnovers per game	13.1	14.7				
Turnover margin	+1.6	-				
Assist/turnover ratio	0.9	1.0				
STEALS	73	72				
Steals per game	8.1	8.0				
BLOCKS	30	41				
Blocks per game	3.3	4.6				
ATTENDANCE	6099	6305				
Home games-Avg/Game	4-1525	5-1261				
Neutral site-Avg/Game	-	0-0				

Score by Periods	1st	2nd	OT	OT2	Totals
Longwood	278	319	18	21	636
Opponents	320	314	28	10	672

# LONGWOOD GAMEDAY > Spotter's Chart



**Tra'Vaughn White**  
*Junior • G*



**Leron Fisher**  
*Junior • G*



**Bryan Gee**  
*Freshman • G*



**Darrion Allen**  
*Sophomore • G*



**Khris Lane**  
*Sophomore • F*



**Lotanna Nwogbo**  
*Redshirt Junior • C*



**Kanayo Obi-Rapu**  
*Freshman • G*



**Victor Dorsey**  
*Freshman • F*



**Isaac Belton**  
*Sophomore • G*



**Shaquille Johnson**  
*Junior • G/F*



**Ryan Badowski**  
*Freshman • G*



**Damarion Geter**  
*Sophomore • F*



**Quincy Taylor**  
*Redshirt Senior • G*



**Tyler Akers**  
*Senior • G*



**Jayson Gee**  
*Head Coach*