

Completely outfitted stand Anuga

Deadline for submission: 01.08.2015

Applications received after this date will be dealt with on a first come-first served availability basis.

S.12

Example: stand 20 sqm



Furniture Package A



Furniture Package B



Furniture Package C (standard)

Order:

We hereby order the construction and dismantling of a completely outfitted stand (stand area including construction) with **one** furniture Package (please mark) included for the rental price of

339,00 EUR per m² for orders until 30.09.2014

355,00 EUR per m² for orders from 01.10.2014

This price includes stand area, stand construction, proportionate energy fee, AUMA fee, stand cleaning and waste disposal during the show.

Basic equipment

- Octanorm system, Maxima light, 40 x 40 cm, aluminium anodised
- White rear and side walls, overall height: approx. 300 cm
- Fascia: fascia panel 200 cm x 50 cm, along sides open to an aisle
- Ribbed carpeting
 grey (standard) red blue green
- Electrical sub-distribution system up to 8 kW
- Power outlet 220 V
- Main supply point 8 kW
- Lighting: per 3 m²: 1 spotlight, 35W HQI
- Cubicle 100 x 100 cm, with door, lockable
- Clothes rail, waste-paper basket
- Waste disposal during the fair
- Stand cleaning
- 1 Furniture Package

- Furniture Package A;**
1 standing table, 2 bar stools, 2 shelves (30 cm deep)
- Furniture Package B;**
1 information counter, 1 bar stool, 2 shelves (30 cm deep)
- Furniture Package C;**
1 table (70 x 70 cm), 4 chairs, 2 shelves (30 cm deep)

Please note:

It is **not** possible to exchange the package contents for other items!

Text for lettering:

Company name, maximum of 20 letters, in Helvetica typeface, black, on each side open to an aisle.

--

Important information from Koelnmesse GmbH:

- All prices given are net prices. The VAT applicable to each item will be charged at the valid rate.
- Changes to the order or the additional accessories ordered must be made in writing. A processing fee of 50.00 EUR will be charged for each additional change made starting with the third change to the order, irrespective of the value of the order amendment.
- Stands will be handed over 24 hours prior to the start of the fair. Exceptions are subject to written arrangements.
- Koelnmesse GmbH offers a wide range of other fittings and equipment. The employees of Koelnmesse GmbH will be happy to provide you with assistance.

→ Special terms and conditions

We hereby declare that we have taken note of the terms of the exhibition and acknowledge them to be binding. The terms are valid for both the company's own representatives as well as independent agents, insofar as they have been commissioned to work at our stand. We are aware that as an exhibitor, we are responsible for compliance with these terms and are liable for those persons commissioned by us. We accept the stand plan and inventory of equipment which will be sent to us as a result of submission of this order as binding. Cancellation of the order is only possible up to 6 weeks before the official start of construction. Cancellations received after this date carry no obligation for Koelnmesse GmbH.

Please read the conditions on page 3 of this order form. Your signature indicates that you accept these conditions.

Place of performance and jurisdiction is Cologne.

**For further information please contact Mr. Rainer Anders,
Tel.: +49 221 821-2091, r.anders@koelnmesse.de**

Company		Contact
Street, postal code, town, country		
Telephone	Fax	E-mail
Date, place, legally binding signature and company stamp		

In addition to the basic equipment we hereby order the following items (for an additional fee):

Quantity		Price per unit	
	Order no.	Euro	
Floor and wall construction			
r.m.	Maxima wall element, KBS white approx. 300 cm high	ssbs110	61.50
unit(s)	Folding door, lockable	ssba230	109.70
unit(s)	Wooden door, lockable, white	ssba240	109.70
unit(s)	Curtain (additional), black	ssba810	48.20
m ²	Platform, approx. 20 mm high	ssba020	16.80
m ²	Platform, approx. 50 mm high	ssba050	23.60
m ²	Platform, approx. 100 mm high	ssba010	31.40
r.m.	Backlit edge of the platform, approx. 100 mm high	ssba015	54.70
m ²	Laminate floor, beech design	ssba500	51.00
Fixtures			
unit(s)	Decorative panel, white, approx. 95 x 95 cm	ssba180	38.20
unit(s)	Peg board, white, approx. 95 x 95 cm	ssba440	42.70
r.m.	Built-in collection rail	ssba370	31.80
unit(s)	Shelving, straight, 100 x 30 cm	ssba130	25.60
unit(s)	Shelving, straight, 100 x 40 cm	ssba135	33.30
unit(s)	Shelving, slanting, 100 x 30 cm	ssba131	30.60
unit(s)	Shelving, slanting, 100 x 40 cm	ssba136	42.40
Platforms, display cases, counters			
unit(s)	Octanorm platform, 70 x 70 + 50 cm	ssbo195	77.90
unit(s)	Table display case with glass top Octanorm 100 x 50 + 104 cm	ssbo750	118.80
unit(s)	Octanorm showcase, glazed, 70 x 70 + 205 cm, lockable	ssba880	255.70
unit(s)	Octanorm info counter 100 x 50 + 104 cm, open at rear	ssba320	122.20
unit(s)	Sliding door fittings for info counter	ssba132	36.30
r.m.	Bar and info counter, type 05, (Stripes), white corpus, white top	ssba200	245.00

Quantity		Price per unit	
	Order no.	Euro	
Furniture			
unit(s)	Sideboard, lockable, approx. 80 x 42 + 72 cm	ssba570	66.60
unit(s)	Table, white top, approx. 70 x 70 cm	ssba770	34.00
unit(s)	Table, white top, approx. 110 x 70 cm	ssba760	34.00
unit(s)	Table, white top, round, approx. 70 cm	ssba775	34.00
unit(s)	Standing table, white top, approx. 110 cm high	ssba790	64.00
unit(s)	Standard upholstered chair, black	ssba480	26.10
unit(s)	Standard bar stool, black	ssba110	25.60
unit(s)	Refrigerator, approx. 145 l, incl. electric socket	ssba380	81.90
unit(s)	Sink with boiler and electric socket	ssba620	133.20
unit(s)	Sink with 2 canisters and electric pump	ssba621	143.50
unit(s)	Standard brochure stand	ssba510	67.70
Graphics			
unit(s)	Company name in Helvetica, black, per 20 additional letters	ssba280	43.70
m ²	Digital print for fascia or wall elements from printable file	ssba520	100.00

Lighting / electric			
unit(s)	Rail spotlight, "Standard" 35 W HQI	ssba690	37.80
unit(s)	Spotlight with side arm, 35 W HQI	ssba710	37.80
unit(s)	Standard socket, 230V	ssba670	23.30

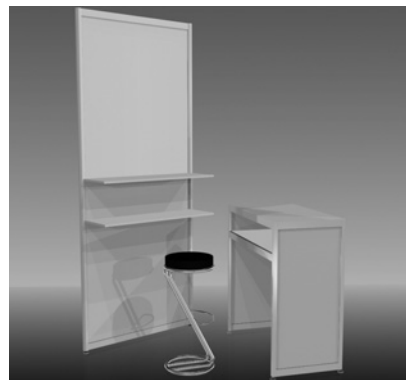
For further information please contact Mr. Rainer Anders, Tel.: +49 221 821-2091, r.anders@koelnmesse.de

In addition to the stand construction we order the following furniture package at a cost of 162.00 EUR each:

- Furniture Package A; 162.00 EUR:** x _____ units
1 standing table, 2 bar stools, 2 shelves (30 cm deep)
- Furniture Package B; 162.00 EUR:** x _____ units
1 information counter, 1 bar stool, 2 shelves (30 cm deep)
- Furniture Package C; 162.00 EUR:** x _____ units
1 table (70 x 70 cm), 4 chairs, 2 shelves (30 cm deep)



Furniture Package A



Furniture Package B



Furniture Package C

Please note:

It is **not** possible to exchange the package contents for other items!

Important information

Please note!

- **Deadline for placing your order: 8 weeks before the start of official assembling.**
- **All prices given are net prices. The VAT applicable to each item will be charged at the valid rate.**
- **Koelnmesse offers a big selection of furniture. The employees of Koelnmesse will be happy to provide you with assistance.**
- **Place your order online at: <http://stand.koelnmesse-service.com>**
- **You can indicate your preferred ground plan and the position of the additional equipment on the form.**
- **Orders received after the deadline for submission mentioned above are subject to a surcharge of 10% of the basic price and must be confirmed in writing by Koelnmesse.**
- **Changes to the order or the additional equipment ordered must be made in writing. A processing fee of 50.00 Euro will be charged for each additional change made after the second change to the order, irrespective of the value of the order amendment.**
- **Stands will be handed over 24 hours prior to the start of the fair. Exceptions are subject to written arrangements. Stand construction and other objects are provided for use for the duration of the event.**
- **The invoice for the stand construction will be sent at the same time as the order confirmation. The invoice is payable immediately upon receipt without deductions. The stand may not be occupied until payment for the stand construction work has been made.**
- **Please read the General Terms and Conditions. Your signature indicates that you accept these conditions.**

Koelnmesse Group special terms and conditions of business for services – Stand construction –

By signing and returning the order form, the General Terms and Conditions of Koelnmesse for services, these special terms and conditions, and subordinate and in addition, the general terms and conditions of business of the service partner are recognized as binding parts of the contract. The specified conditions can be requested from Koelnmesse. The conditions are also available for download from www.koelnmesse-service-portal.de. All provisions apply to both the company's own as well as to independent stand designers, decorators, and signwriters and to all persons, in as far as they perform activities as commissioned by the exhibitor or on the exhibitor's behalf in connection with the construction and design of the stand. The exhibitor is responsible for ensuring that all regulations are complied with. The exhibitor must supervise construction personnel and other persons working on their behalf to ensure that they adhere to the regulations. The exhibitor is liable for all damages to leased objects caused by the exhibitor, his employees, commissioned third parties or other persons who he has caused to fulfil his obligations or are acting on his behalf.

All prices given are net prices. VAT will be charged additionally at the statutory rate.

Complaints regarding goods and services supplied must be submitted in writing immediately, or at the very least, at some time during the event in question.

You may cancel the stand construction order only if you do so no later than six weeks before the stand construction period officially begins. The date on which Koelnmesse receives the exhibitor's declaration is the criterion for determining if the deadline has been met. For cancellations received after the deadline, Koelnmesse is entitled to charge a flat-rate fee for the costs incurred. These costs amount to 30% of the agreed fee in the event of a cancellation within 4–6 weeks prior to the start of construction, 50% of the agreed fee in the event of a cancellation within 2–4 weeks prior to the start of construction, and 100% of the agreed fee in the event of a cancellation at a later time or during the construction of the stand. The agreed fee has to be paid in full for individually crafted or purchased components and graphics.

Koelnmesse is entitled to contract a partner company to carry out the service ordered. In this event, such a company will operate in the name and on behalf of Koelnmesse.

The technical guidelines are to be observed. The technical guidelines can be requested from Koelnmesse by calling +49 221 821-3998 or can be downloaded from www.koelnmesse.de.