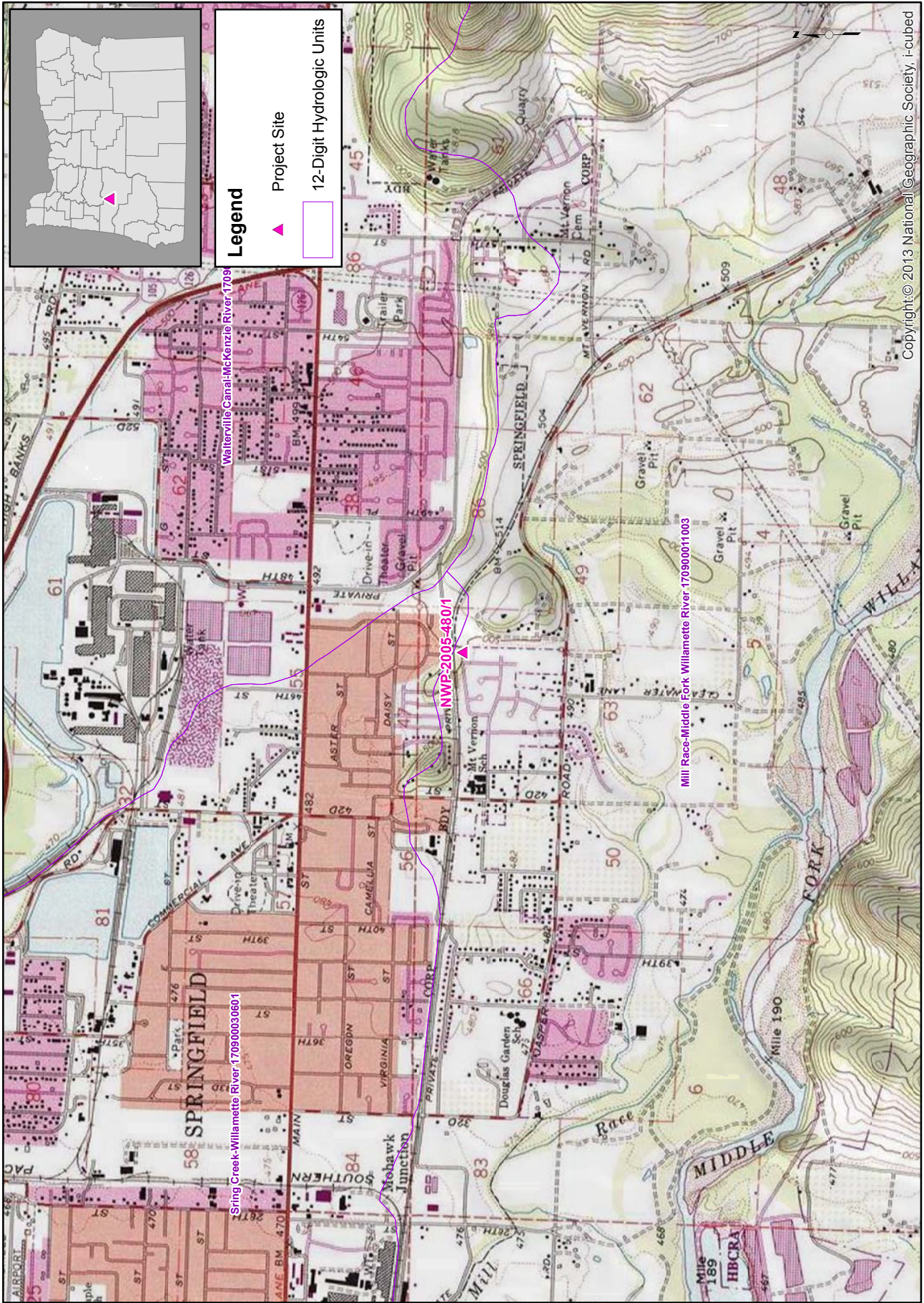


USGS Topography Map: NWP-2005-480/1, Hayden Homes (Glacier Meadows)

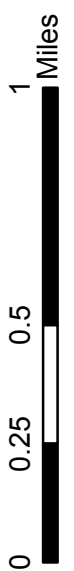


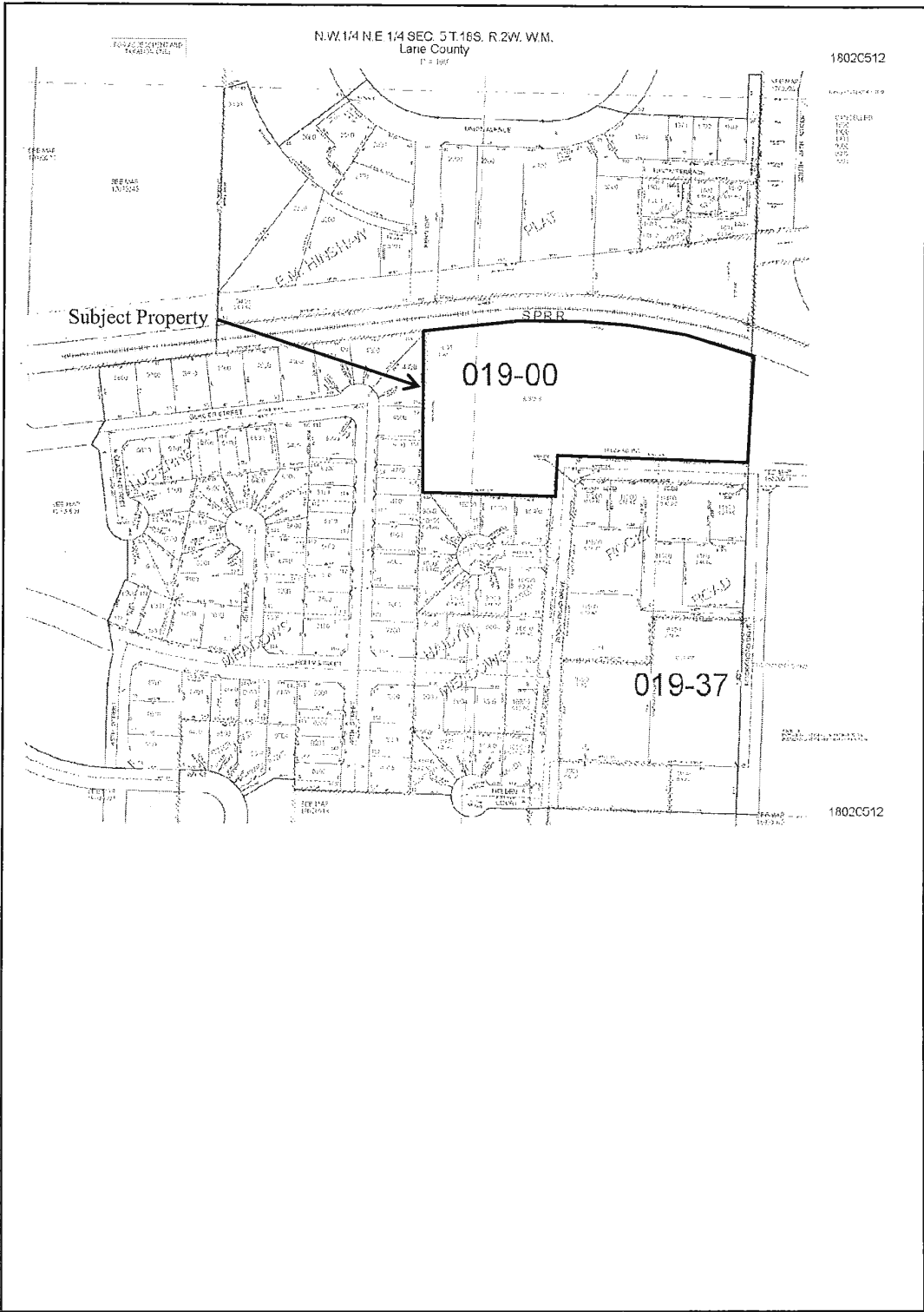
Copyright: © 2013 National Geographic Society, Inc.

Date: 4/15/2015
 Prepared by: US Army Corps of Engineers, Portland District
 For: Regulatory Review

Latitude: 44.039028751 Longitude: -122.953529498
 City: Springfield
 County: Lane
 PLSS: Section 4, Township 18.0S, Range 2.0W
 HUC12: Mill Race-Middle Fork Willamette River (170900011003) projection: Oregon State Plane South (NAD 83)

Scale: 1:24,000

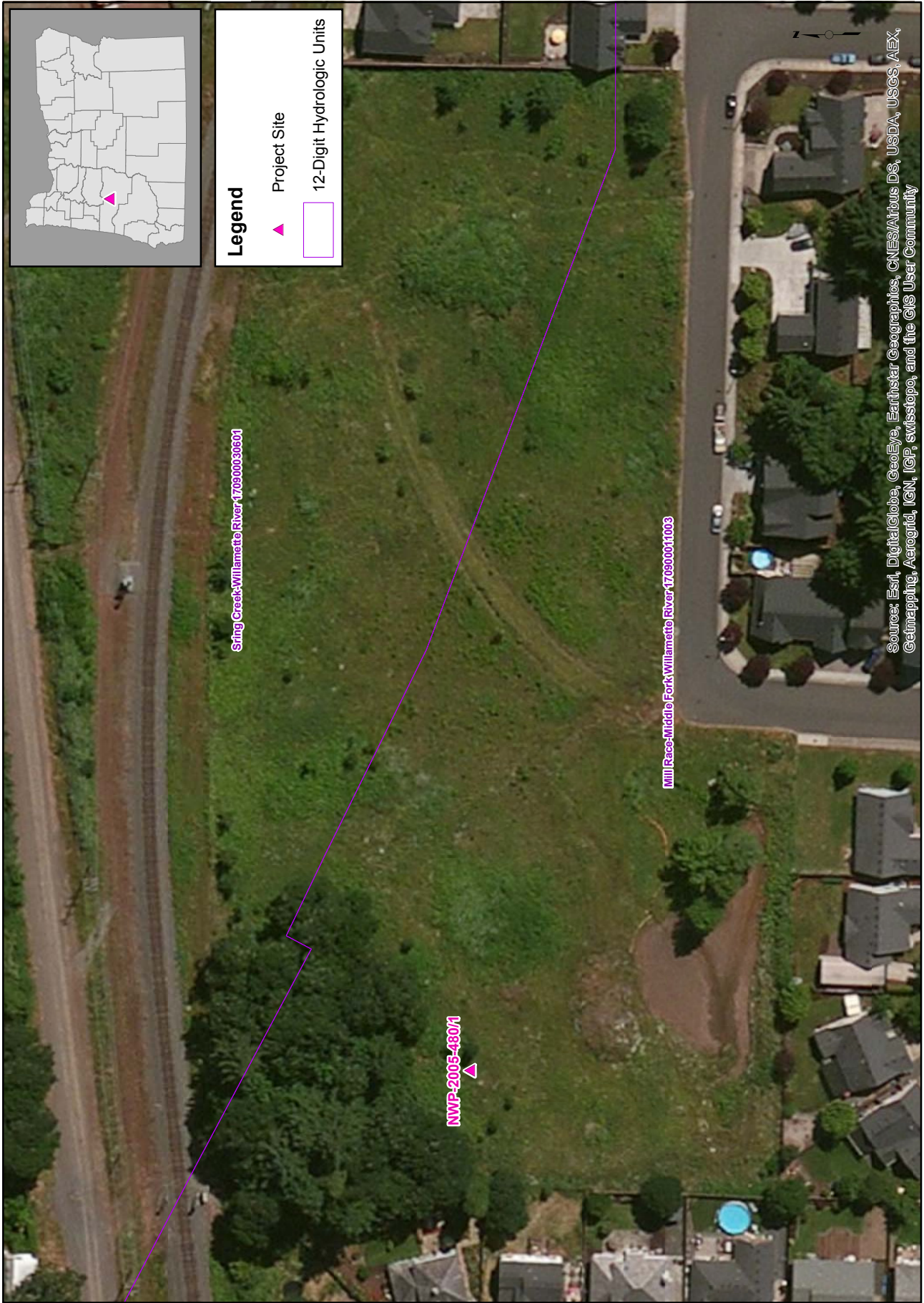




Tax Map, T18S, R2W, Sec. 5 TL#9001
 Glacier Meadows
 S&A # 2301

Schott & Associates
 P.O. Box 589
 Aurora, OR, 97002
 503.678.6007

ESRI Aerial Map: NWP-2005-480/1, Hayden Homes (Glacier Meadows)

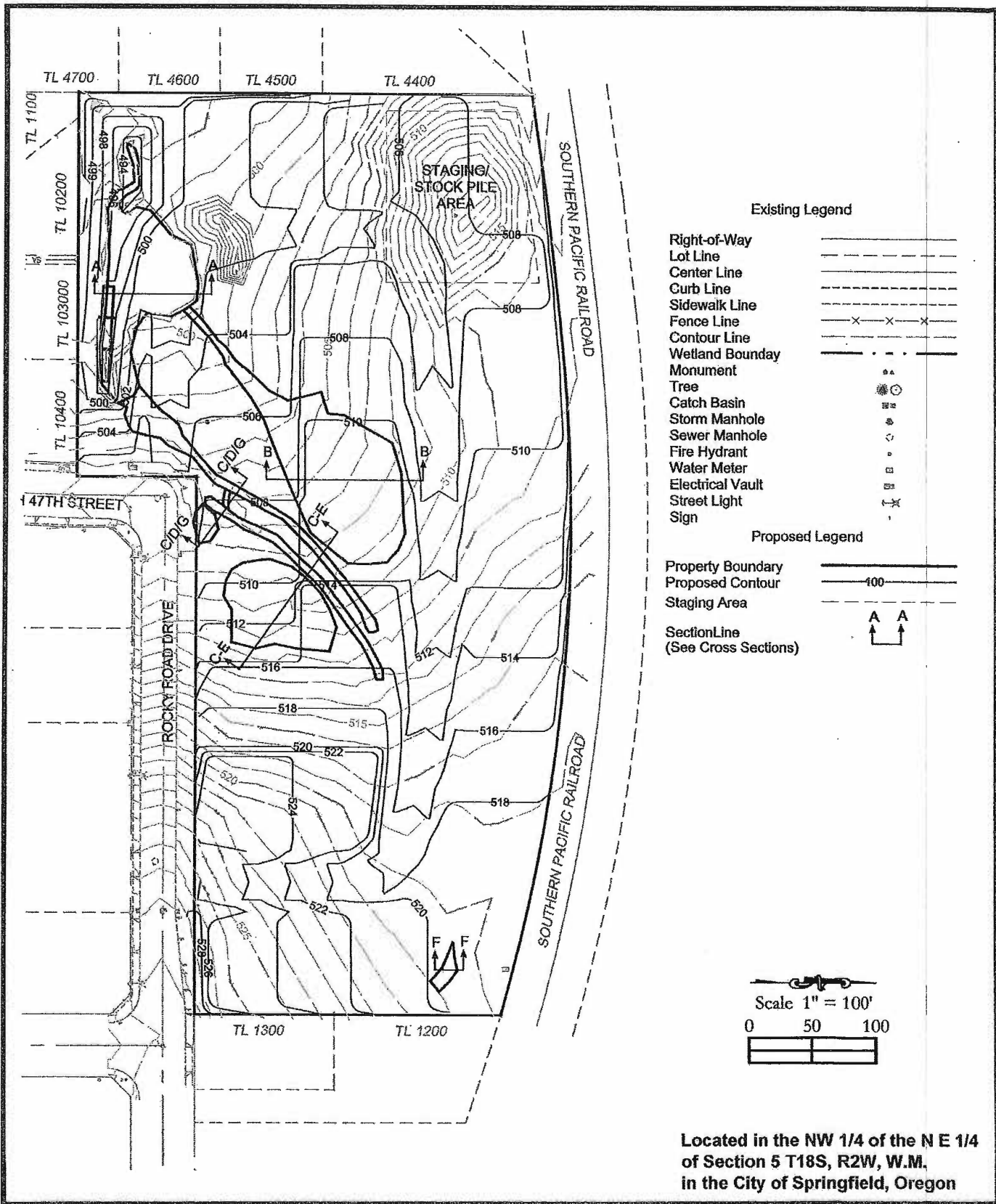


Source: Esri, DigitalGlobe, GeoEye, Earthstar Geographics, CNES/Airbus DS, USDA, USGS, AEX, Getmapping, Aerogrid, IGN, IGP, swisstopo, and the GIS User Community

Latitude: 44.039028751 Longitude: -122.9533529498
 City: Springfield County: Lane
 PLSS: Section 4, Township 18.0S, Range 2.0W
 HUC12: Mill Race-Middle Fork Willamette River (170900011003) projection: Oregon State Plane South (NAD 83)

Scale: 1:1,000



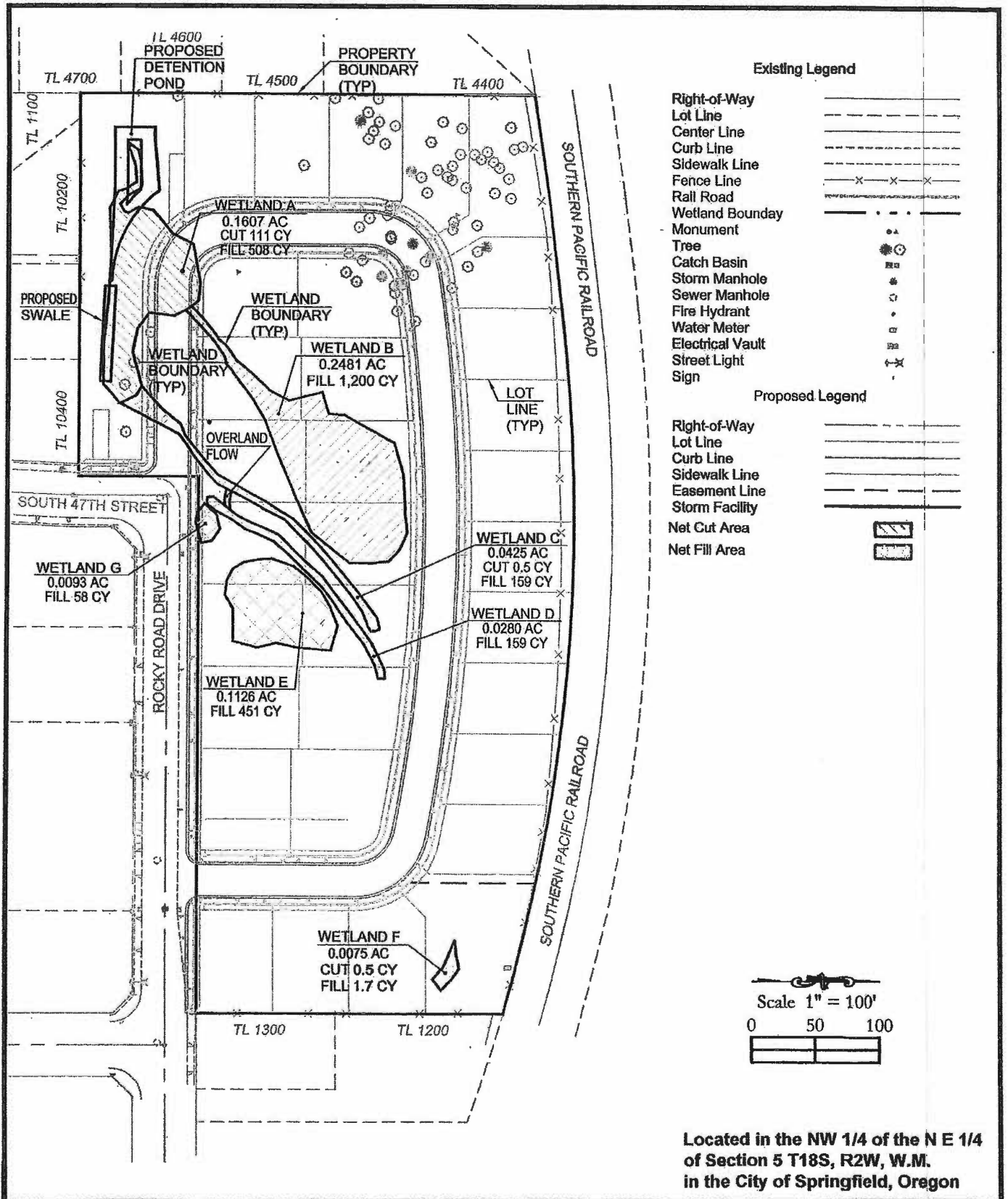


Located in the NW 1/4 of the NE 1/4
of Section 5 T18S, R2W, W.M.
in the City of Springfield, Oregon

PLS ENGINEERING
2008 C Street
Vancouver, WA 98663
PH: (360) 944-6519 Fax: (360) 944-6539

Glacier Meadows

Scale: 1" = 100'	Date: March, 2015
PLS Job #: 2371	Drawing: Grading Plan

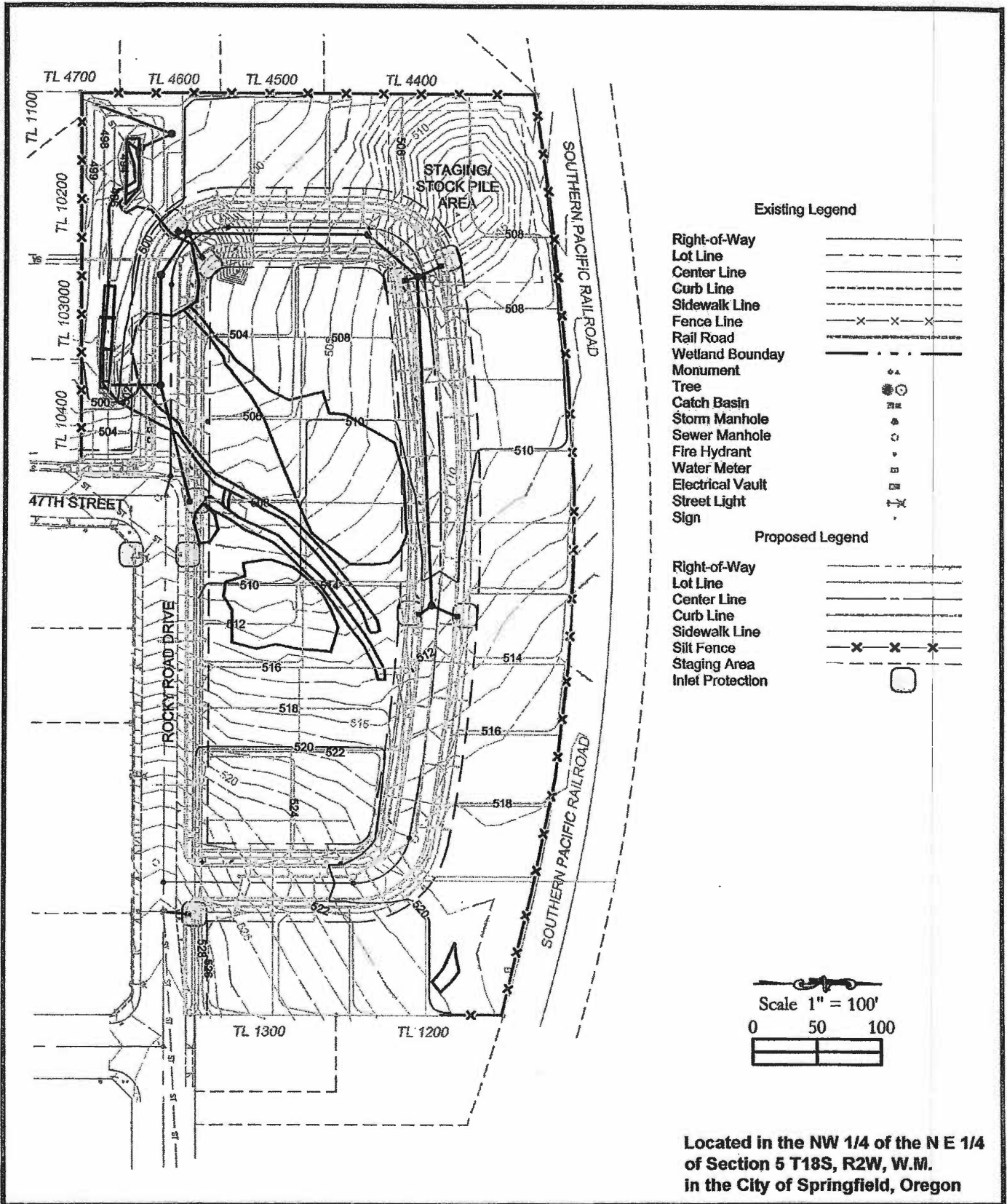


PLS ENGINEERING

2008 C Street
 Vancouver, WA 98663
 PH: (360) 944-6519 Fax: (360) 944-6539

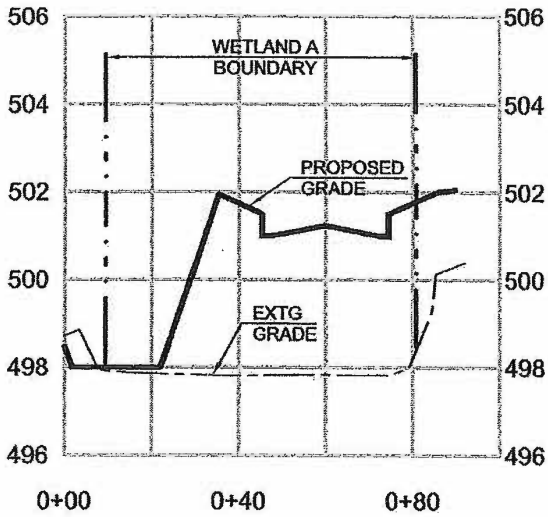
Glacier Meadows

Scale: 1" = 100'	Date: March, 2015
PLS Job #: 2371	Drawing: Site Development Plan

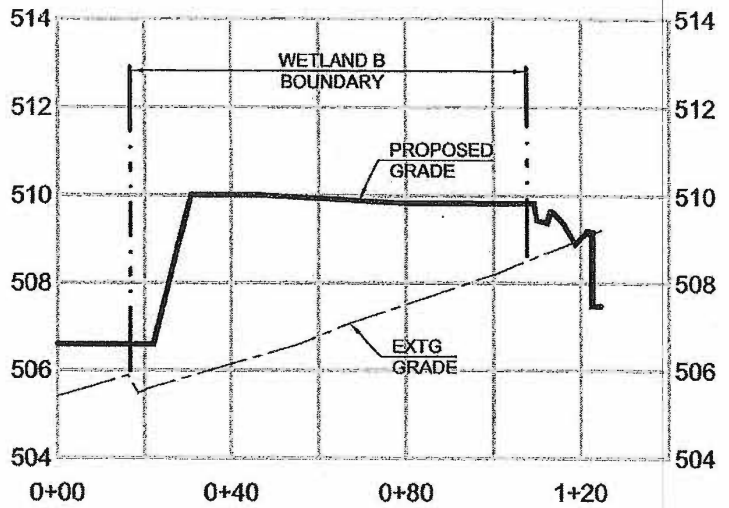


PLS ENGINEERING
 2008 C Street
 Vancouver, WA 98663
 PH: (360) 944-6519 Fax: (360) 944-6539

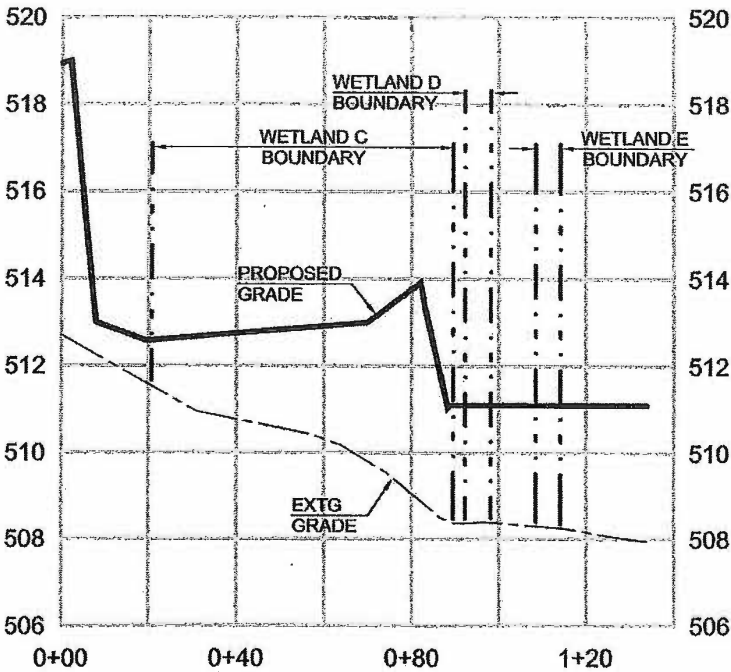
Glacier Meadows	
Scale: 1" = 100'	Date: March, 2015
PLS Job #: 2371	Drawing: Erosion Control Plan



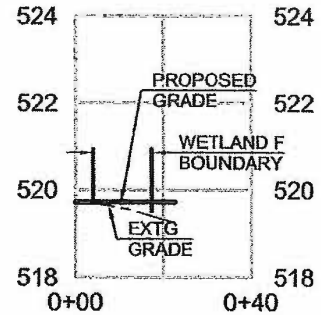
SECTION A - A
EXTG DETENTION POND



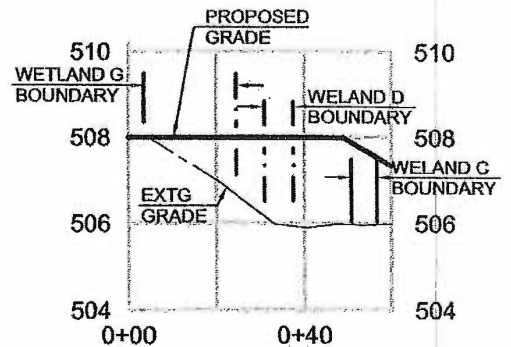
SECTION B - B



SECTION C-E - C-E



SECTION F - F



SECTION C/D/G - C/D/G

Located in the NW 1/4 of the NE 1/4
of Section 5 T18S, R2W, W.M.
in the City of Springfield, Oregon

PLS ENGINEERING
2008 C Street
Vancouver, WA 98663
PH: (360) 944-6519 Fax: (360) 944-6539

Glacier Meadows

Scale: H: 1"=40' / V: 1" = 4'

Date: March, 2015

PLS Job #: 2371

Drawing: Wetland Cross Sections