

English Language Acquisition Consortium (ELAC) Meeting

Santa Clara County  Office of Education

Multilingual Programs
Curriculum & Instruction Department

May 24, 2013

Facilitators
Lorena Tariba
Yee Wan, Ed.D.
Coordinators, Multilingual Programs

Today's Topics

- District Networking Discussion
- The New English Language Development Standards Awareness Series – Lessons from the Field
- Language Policy and Leadership Updates
- SCCOE Multilingual Programs: 2012-13 Highlights and Looking Ahead

Meeting Materials Online Posting

Visit <http://www.sccoe.org/depts/ell/elac.asp>

District Networking Table Discussion

Please group by elementary and secondary levels

1. What are your district's key areas of need regarding English learner program and services?
2. What are your district's key initiatives/actions to address the needs of English learners?

District Networking Table Share Out

1. Summarize 2-3 key points from your group's discussion.
2. Please observe a 3 minute time limit for your group's report.
3. Please add topics of interest or resources needed or offered to the Meeting Feedback Form.



CA ELD Standards: Design

- **Aligned** with and to be **used in tandem** with CCSS for ELA & Literacy
- **Highlight and amplify** the *critical language, knowledge about language, and skills using language* in the CCSS in order for ELs to be simultaneously successful in school while they are developing language
- Provide **fewer, clearer, higher standards** so teachers can focus on what's most important



Santa Clara County
Office of Education

ELD Standards Overview Page 14

7

AP Statistics Lesson

Total Number of Students: 23

Total Number of ELs: 5

2 Early Advanced

3 Advanced

Reclassified Fluent English Proficient: **10**

Length of Lesson: 90 minutes for two days

Topic: Using statistics to make climate data inferences



Santa Clara County
Office of Education

8

Santa Clara County Office of Education
Organization of the California English Language Development Standards

		Emerging →	Expanding →	Bridging	ELD Evidence
Part I Interacting in Meaningful Ways	Modes of Communication	A. Collaborative	1. Expressing information/ideas 2. Interacting w/ written English 3. Supporting others and persuading others 4. Adapting language choices		
		B. Responsive	5. Listening actively 6. Responding/writing closely 7. Evaluating language choices 8. Analyzing language choices		
		C. Productive	9. Presenting 10. Writing 11. Justifying/arguing 12. Selecting language resources		
Part II Learning About How English Works	Language Processes	1. Understanding and inferring 2. Understanding process	11. Understanding and inferring 12. Understanding process		
		3. Recognizing and understanding word meaning 4. Recognizing and understanding sentence structure	3. Using verbs and verb phrases 4. Using nouns and noun phrases 5. Modifying adjectives		
		6. Collecting and organizing information 7. Comparing ideas	6. Comparing ideas 7. Comparing ideas		
Part III Using Foundational Literacy Skills		<ul style="list-style-type: none"> Print Concepts Phonological Awareness Fluency and Word Recognition Fluency (See Appendix A) 			

ELD Leadership Series, Spring 2013, Graphic created by Multilingual Education Services, Santa Clara County Office of Education

AP Statistics Lesson: Through the Lenses of the CCSS

Watch the video and record evidence of CCSS practices and 21st century skills.

AP Statistics Lesson: Through the Lenses of the CA ELD Standards

1. Identify ELD standards that were addressed.
2. Circle the ELD strands on the note-taking guide.

Video Lesson Observation Debrief

1. What do the California ELD standards look like in action?
2. What are the implications of the California ELD standards for various instructional settings?

Language Policy & Leadership Updates



TOM TORLAKSON
State Superintendent
of Public Instruction

CA ELD Standards Professional Learning Modules (PLMs) Outline

- Module 1: Overview of the California English Language Development Standards – 3 hrs.
- Module 2: Practical Application of the California English Language Development Standards – 4 Hrs.



TOM TORLAKSON
State Superintendent
of Public Instruction

ELD Standards Publishing and Printing

- Submitted to CDE Press in March
- Currently in the editing and revisions stages
- Timeline for publishing and printing is about 3 months
- Standards and appendices will still be accessible on CDE website

14



Santa Clara County
Office of Education

15



TOM TORLAKSON
State Superintendent
of Public Instruction

ELD Supplemental Materials Review

- Criteria approved by SBE in March 2013
- Reviewers appointed in May 2013
- Review between July 2013 and November 2013
- SBE action March/May 2014
- Information at
<http://www.cde.ca.gov/ci/cr/cf/suptsupmatreview.asp>

16



Santa Clara County
Office of Education



TOM TORLAKSON
State Superintendent
of Public Instruction

Proposed Types of Programs

- 1) English Language Arts
- 2) English Language Arts/English Language Development
- 3) Biliteracy Language Arts/English Language Development
- 4) Intervention in English Language Arts
- 5) Intervention for English Learners



Santa Clara County
Office of Education

17



TOM TORLAKSON
State Superintendent
of Public Instruction

Program 1

- English Language Arts
 - Common Core Standards
 - Intended for students who do not need English language development



Santa Clara County
Office of Education

18



TOM TORLAKSON
State Superintendent
of Public Instruction

Program 2

- English Language Arts/English Language Development
 - Alignment to Common Core ELA
 - Alignment to CA ELD



Santa Clara County
Office of Education

19



TOM TORLAKSON
State Superintendent
of Public Instruction

Program 3

- Biliteracy Language Arts/English Language Development
 - Alignment to Common Core ELA
 - Alignment to Common Core ELA in another language with augmentations
 - Alignment to ELD Standards



Santa Clara County
Office of Education

20



TOM TORLAKSON
State Superintendent
of Public Instruction

Program 4

- Intervention in English Language Arts
 - Alignment to selected CC ELA standards
 - Intended for students 2 or more years below grade level in academic achievement



Santa Clara County
Office of Education

21



TOM TORLAKSON
State Superintendent
of Public Instruction

Program 5

- Intervention for English Learners
 - Alignment to selected ELD standards
 - Intended for students 2 or more years below grade level in academic achievement



Santa Clara County
Office of Education

22



TOM TORLAKSON
State Superintendent
of Public Instruction

Accountability Leadership Institute for English Learners and Immigrant Students

SAVE THE DATE

December 9-10, 2013

(BCN Dec. 10-11)

Hyatt Regency San Francisco
Airport, Burlingame

Email: ALI@cde.ca.gov



Santa Clara County
Office of Education

23



TOM TORLAKSON
State Superintendent
of Public Instruction

Title III Payments Fiscal Year 2011–12

- The sixth payment was released on March 6, 2013.
- Warrants were mailed to county treasurers and should have been received by the end of March 2013.
- The next payment is scheduled to be released by June 2013.

27



Santa Clara County
Office of Education

24



TOM TORLAKSON
State Superintendent
of Public Instruction

Title III Payments Fiscal Year 2012–13

- The second payment was released on March 6, 2013.
- Warrants were mailed to county treasurers and should have been received within three weeks of March 6, 2013.
- The next payment is scheduled to be released by June 2013.

28



Santa Clara County
Office of Education

25

Title III Year 2 and 4 Plans

- The CDE review of Year 2 & 4 Plans will be finalized by the end of May 2013
- CDE will mail letters to district Superintendents notifying them of the acceptance of their Title III Plan (or the need to make changes to it) by mid June 2013
- An email to the LEA Title III Administrator or contact will precede the official letter



Santa Clara County
Office of Education



TOM TORLAKSON
State Superintendent
of Public Instruction

2012–13 Immigrant Student Reporting

- Local educational agencies (LEAs) should have certified 2012-13 Immigrant student counts through the California Longitudinal Pupil Achievement Data System (CALPADS).
- For questions pertaining to CALPADS certification of student information, please contact the CALPADS Service Desk by phone at 916-325-9210 or by e-mail at calpads-support@cde.ca.gov.

29



Santa Clara County
Office of Education

27



TOM TORLAKSON
State Superintendent
of Public Instruction

2012–13 Immigrant Student Reporting

- Private schools should have submitted immigrant student counts via the online Student National Origin Report (SNOR).
- For late SNOR submission, please contact the Language Policy and Leadership Office (LPLO) by phone at 916-319-0845 or by e-mail at scovarrubias@cde.ca.gov.
- If there are no immigrant students, a report is still required for determining funding eligibility for future years.

30



Santa Clara County
Office of Education

28



TOM TORLAKSON
State Superintendent
of Public Instruction

The 2013-14 Title III Funding Application Process

Applications for 2013–14 must be submitted by June 30, 2013. Applications submitted after this date are not guaranteed funding.

33



Santa Clara County
Office of Education

29



TOM TORLAKSON
State Superintendent
of Public Instruction

The 2013-14 Title III Funding Application Process

You must apply to receive funds!

Information on eligibility is available May 15, 2013 at the following CDE Web pages:

Limited English Proficient

Title III Language Instruction for Limited English Proficient (LEP) students at

<http://www.cde.ca.gov/sp/el/t3/lep.asp>

Immigrant

Title III Immigrant Students at

<http://www.cde.ca.gov/sp/el/t3/immigrant.asp>

34



Santa Clara County
Office of Education

30



TOM TORLAKSON
State Superintendent
of Public Instruction

The 2013-14 Title III Funding Application Process (Direct-Funded)

- LEAs eligible to apply via CARS
 - LEP Student Sub-grant Program: \$10,000 or more
 - Immigrant Education Student Sub-grant Program: \$5,000 or more

35



Santa Clara County
Office of Education

31



TOM TORLAKSON
State Superintendent
of Public Instruction

The 2013-14 Title III Funding Application Process (Consortia)

LEAs generating less than \$10,000 (LEP) and \$5,000 (Immigrant) apply via the online consortia application process. Applications are due by June 30, 2013.

- A letter detailing application information was mailed May 10, 2013 to consortia eligible LEAs.
- If the LEA is eligible to apply as direct funded, but is considering applying via consortia, the LEA must contact the LPLO directly.

36



Santa Clara County
Office of Education

32



TOM TORLAKSON
State Superintendent
of Public Instruction

Consolidated Application and Reporting System

- For more information on CARS, including registration, calendar, training, newsflash updates, letters and presentations, please visit the CDE Consolidated Application and Reporting System Web page at <http://www.cde.ca.gov/fq/aa/co/cars.asp>.
- For questions, please contact the Consolidated Application Support desk by phone at 916-319-0297 or by e-mail at conappsupport@cde.ca.gov.

37



Santa Clara County
Office of Education

33



TOM TORLAKSON
State Superintendent
of Public Instruction

Title III Contacts

For fiscal questions regarding the Title III LEP Subgrant, please contact:

- Patty Stevens, Associate Governmental Program Analyst, by phone at 916-323-5838 or by e-mail at pstevens@cde.ca.gov.

For Title III LEP Program questions, please contact:

- Geoffrey Ndirangu, Education Programs Consultant, by phone at 916-323-5831 or by e-mail at gndirang@cde.ca.gov.

40



Santa Clara County
Office of Education

34



TOM TORLAKSON
State Superintendent
of Public Instruction

Title III Contacts

For fiscal questions regarding the Title III Immigrant Subgrant, please contact:

- Pam Lucas, Associate Governmental Program Analyst, by phone at 916-323-5739 or by e-mail at plucas@cde.ca.gov.

For Title III Immigrant Program questions, please contact:

- Sandra Covarrubias, Education Programs Consultant, by phone at 916-319-0267 or by e-mail at scovarrubias@cde.ca.gov.

41



Santa Clara County
Office of Education

35

Economic Impact Aid Required Web Posting

- 2013-14 Consolidated Application Assurances: Economic Impact Aid (EIA) Required Web Posting for fiscal year 2013-14.

<http://www.cde.ca.gov/fg/aa/co/ca13asseiarequiredweb.asp>



Santa Clara County
Office of Education

36

California English Language Development Test (CELDT)

SCCOE Training Dates:
May 29 and Sept. 3, 2013

<http://santaclara.k12oms.org/1054-67164>



Santa Clara County
Office of Education

37



California English Language Development Test

Updates and Reports

Bilingual Coordinators Network Meeting

May 17, 2013

CALIFORNIA DEPARTMENT OF EDUCATION
Tom Torlakson, State Superintendent of Public Instruction



Santa Clara County
Office of Education

38



TOM TORLAKSON
State Superintendent
of Public Instruction

Presentation Overview

- English Language Proficiency Assessments for California (ELPAC) Update
- Proposed ELPAC Timeline
- CELDT Item Alignment Meeting
- Key Dates 2013–14
- Contact Information

2



Santa Clara County
Office of Education

39



TOM TORLAKSON
State Superintendent
of Public Instruction

ELPAC Update

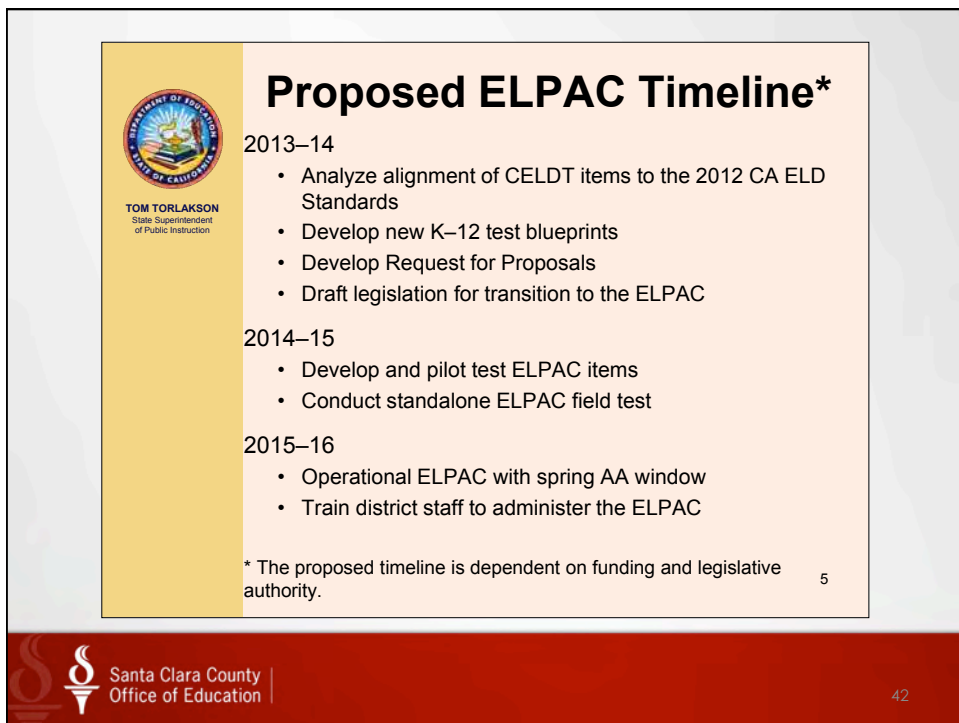
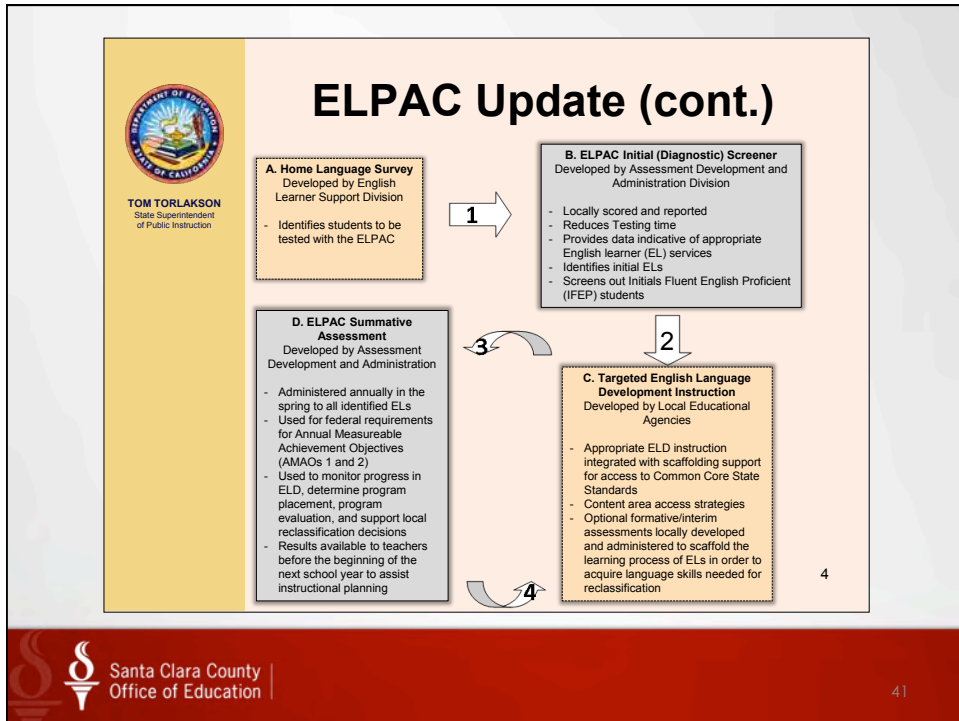
- Communication with the State Board of Education (SBE)
 - April Information Memo for the ELPAC
 - May SBE Item
- The SBE April Information Memorandum is posted on the SBE Web page at <http://www.cde.ca.gov/be/pn/im/index.asp>
- The SBE May Item #5 is posted on the SBE Web page at <http://www.cde.ca.gov/be/ag/ag/yr13/agenda201305.asp>

3



Santa Clara County
Office of Education

40





TOM TORLAKSON
State Superintendent
of Public Instruction

CELDT Item Alignment Meeting

- Date
 - June 11–12, 2013 at the Sheraton Grand, Sacramento
- Purpose
 - To align the active CELDT items to the 2012 ELD Standards
- Recruitment Process
 - Notification to educator groups throughout California
 - Four-week application period
 - Preliminary list of applicants from contractor to the CDE for approval
- Next Steps

6



Santa Clara County
Office of Education

43



TOM TORLAKSON
State Superintendent
of Public Instruction

Key Dates

- July 1, 2013—CELDT 2013–14 AA and IA windows open
- August 27, 2013—Final Scoring Training of Trainers meeting, Sacramento County Office of Education
- October 2013
 - End of CELDT AA Window
 - Release of AA/IA Data for 2012–13

7



Santa Clara County
Office of Education

44



TOM TORLAKSON
State Superintendent
of Public Instruction

Contact Information

CDE ELPA Office

Phone: 916-319-0784

CELDT E-mail: celdt@cde.ca.gov

CELDT Web page:
<http://www.cde.ca.gov/ta/tg/el/>

8



Santa Clara County
Office of Education

45

Toward a "Common Definition of English Learner": Issues and Opportunities for State Assessment Consortia

Robert Linquanti
CA Comprehensive
Center at WestEd

H. Gary Cook
Wisconsin Center for
Educational Research

Webinar to CDE Bilingual Coordinators Network
May 10, 2013



Santa Clara County
Office of Education

46

Consortia members required to adopt common definition of English learner



PARCC Partnership for Assessment of Readiness for College and Careers



Each consortium "must define the term in a manner that is uniform across member states and consistent with section 9101(25) of the ESEA"

(USED, 2010, p. 20)



Santa Clara County
Office of Education

47

Permutations of Consortia

NOTE: Membership Changes Continually

Academic / ELP	WIDA ASSETS	CCSSO ELPA-21	Stand-Alone
Smarter Balanced	AK, DE, HI, ME, MI, MO, MT, NV, NH, NC, ND*, PA*, SD, VT, WI, WY	IA, KS, OR, SC, WA, WV	CA, CT, ID
PARCC	CO, DC, IL, MA, MD, MS, NJ, NM, ND*, OK, PA*, RI	AR, FL, LA, OH	AZ, GA, IN, KY, NY, TN
Stand-Alone	AL, MN, VA	NE	TX, UT

*Currently advisory states in both Smarter Balanced and PARCC
Sources: Smarter Balanced; Achieve, Inc.; WIDA; CCSSO.
(Consortia participation as of April 2013)



Santa Clara County
Office of Education

48

Who is an English Learner?

Legal roots of protected class status

- National origin-minority or language-minority students (Civil Rights Act–Title VI, 1964)
- Right to supports "to overcome language barriers that impede equal participation by [students] in [an educational agency's] instructional programs" (EEOA, 1974)
- **"Limited English proficient" is defined in ESEA** (BEA, 1978; IASA, 1994, NCLB, 2001)



Santa Clara County
Office of Education

49

Recap: Summary Recommendations

1. Adopt a common, standardized, and validated Home Language Survey
2. Establish consistent, comparable initial EL classification criteria, procedures
3. Establish clear understanding of what English proficient means



Santa Clara County
Office of Education

50

Some Next Steps

- Draft guidance for state & consortia consideration
- Provide advice & support to consortia on immediate needs (e.g., for field testing)
- Build state policymaker/stakeholder awareness of issues and options
- Work via CCSSO Cross-Consortium ELL Assessment Advisory Committee



CALPADS Update

Bilingual Coordinators Network

May 17, 2013

Jessica Barr, Administrator

CALPADS/CBEDS/CDS Operations Office
Educational Data Management Division
California Department of Education

CALIFORNIA DEPARTMENT OF EDUCATION
Tom Torlakson, State Superintendent of Public Instruction



TOM TORLAKSON
State Superintendent
of Public Instruction

Overview

- CDE Organizational Changes
- CALPADS 2012–13 Submissions
- New Functionality
- CALPADS Maintenance and Upgrade Schedule
- Assessment and Accountability Update
- Changes to 2013–14
- Resources
- English Language Acquisition Status Data Analysis

2



Santa Clara County
Office of Education

53



TOM TORLAKSON
State Superintendent
of Public Instruction

CALPADS 2012–13 Submissions

- Fall 1: 100% of local educational agencies (LEAs) / independently reporting charter (IRCs) schools certified
- Fall 2: 99.8% of LEAs/IRCs certified
- Spring 1: 100% of LEAs/IRCs certified

4



Santa Clara County
Office of Education

54



TOM TORLAKSON
State Superintendent
of Public Instruction

CALPADS 2012–13 Submissions (cont.)

End-of-Year (EOY) now open

- Certification Window: April 29, 2013 – July 31, 2013
- Amendment Window: August 1, 2013 – September 11, 2013

EOY 1

- 7-12 Course Completions
- Career Technical Education Data

EOY 2

- Program Participation
- Homeless Counts

EOY 3

- Discipline Incidents and Actions
- Persistently Dangerous Offense Expulsions

EOY 4

- CAHSEE Waivers and Exemptions

5



Santa Clara County
Office of Education

55



TOM TORLAKSON
State Superintendent
of Public Instruction

CALPADS Maintenance and Upgrade Schedule

- CALPADS will be unavailable to users from June 27, 2013 at 10:00 p.m. through July 14, 2013
- Implement major system upgrade
 - Utilize new versions of server operating systems and other software
 - More robust test environment
 - Will support Internet Explorer v9

7



Santa Clara County
Office of Education

56



TOM TORLAKSON
State Superintendent
of Public Instruction

Accountability Update

- CALPADS Operational Data Store (ODS) data pulls updated schedule located at www.cde.ca.gov/calpads. Click on Calendar.
- Upcoming deadline: Graduation data used to determine 2013 Adequate Yearly Progress Cohort Graduation Rate: June 27, 2013
- Important to update CALPADS regularly

9



Santa Clara County
Office of Education

57



TOM TORLAKSON
State Superintendent
of Public Instruction

Changes to 2013–14

- Spring submission moving to Fall 1
 - English Learner Counts
 - Official count on Fall 1 Census Day
 - Count of Students Reclassified
 - Day after prior year October Census Day (2012) through current year October Census Day (2013)
 - Count of Title III Eligible Immigrants
- Moving submission to Fall 1 in order to:
 - Facilitate use of data for funding
 - Align the collection of EL counts and EL services data
 - Provide LEAs additional time to complete Fall 2
 - Ease the burden on LEAs to complete the Office of Civil Rights collection

10



Santa Clara County
Office of Education

58



TOM TORLAKSON
State Superintendent
of Public Instruction

Changes to 2013–14 (cont.)

- **Reclassified Student Counts**



October
(Day after
prior year
Census Day)

LEAs receive current year CELDT
and CST results

October
(Current year
Census Day)

- TBDs – important to update data
- Reminder: If classified as an EL, the effective date should be the 1st day of enrollment.

11



Santa Clara County
Office of Education

59

CALPADS Update FLASH #73

- **Spring submission will move to Fall 1 in 2013–14**
- **Implication: Duplicate count of reclassification number**
- <http://www.cde.ca.gov/ds/sp/cl/calpadsupdfash73.asp>



Santa Clara County
Office of Education

60



TOM TORLAKSON
State Superintendent
of Public Instruction

Resources

- Release Updates and Known Issues
- Error List
- Flash Updates
- Data Guide
- Self-Paced Training Modules
- Glossary (User Manual)
- FAQs

12



Santa Clara County
Office of Education

61



TOM TORLAKSON
State Superintendent
of Public Instruction

English Language Acquisition Status Data Analysis

- Approximately 60,000 students in a three year span (2009 – 2012) had invalid moves in their English Language Acquisition Status (ELAS)
- Examples:
 - EO to EL
 - RFEP to EL
 - IFEP to EL
 - EL to EO

13



Santa Clara County
Office of Education

62



TOM TORLAKSON
State Superintendent
of Public Instruction

English Language Acquisition Status Data Analysis (cont.)

- Currently these invalid moves only show as a warning.
- Goal: Clean and reliable data
- Proposing to make these invalid moves a fatal error (data would not be accepted until fixed).

14



Santa Clara County
Office of Education

63

2012-13 Highlights Title III Technical Assistance

- Year 2 LEAs: **5**
- Year 4 LEAs: **6**
- Monitoring of the Year 2 and 4 2011-12 Cohort: **11**
- Supported **22** Years 2, 3, 4, and 4+ LEAs



Santa Clara County
Office of Education

64

2012-13 Highlights

Seal of Bilingual and Pathway Award Districts and Charter School

- Alum Rock
- Campbell Elementary
- Campbell High
- East Side
- Gilroy Unified
- Latino College Preparatory
- Mount Pleasant Elementary
- Mountain View-Los Altos Union High
- Santa Clara Unified
- San Jose Unified
- Palo Alto Unified



Santa Clara County
Office of Education

65

Seal of Bilingual

Languages	Spanish	French	Chinese	Japanese	Korean	German	Latin	Portuguese
663	437	126	54	21	7	2	5	11



Santa Clara County
Office of Education

66

A Look at Learning

Teachers of the Year

**East Side Union High
School District**

Bernadette Salgarino

District Teacher of the
Year

Maryann Haggerty

Site Teacher of the Year
Yerba Buena High School

**Cupertino Union School
District**

Nancy Ross

District Teacher of the
Year

Peggy Tsai

Site Teacher of the Year
Nimitz Elementary School

2012-13 Highlights

Professional Development

- Dr. Kate Kinsella Institute
- Academic Success Institute
- *A Look at Learning*
- Title III Technical Assistance to 21 districts
- ELD Leadership Series (3 Breakfast Meetings)
- ELD and CCSS Institute (3 Full Days)
- Support for the Curriculum Leadership Council (CLC)
- CELDT Training of Trainers
- Customized Training

2012-13 Highlights National and State Leadership

- Developed and posted resources on the webpage:
 - ELAC and state BCN meeting resources
 - Conference and workshop handouts
 - Starlights Research Briefs
 - *Perspectives Magazine* published by the National Association for Bilingual Education

2012-13 Highlights National and State Leadership

- English Language Acquisition Consortium (ELAC) Meetings
- Conference Presentations
 - CDE's Accountability Leadership Institute
 - 42nd National Association for Bilingual Education Conference
 - CABE
 - Implementation Science Symposium
 - Asilomar Reading Conference

New Name Starting July 1, 2013!



2013-14 ELAC Meeting Dates

- Dates: same dates of the Assistant Superintendents meetings, the Assessment and Accountability Network (AAN) and the Categorical Directors meeting
- Time: 1:30 – 3:00 p.m.

2013-14 Seal of Bilingual Meeting Dates

- October 3, 2013
- February 6, 2014
- May 1, 2014
- 3:30 – 5:00 p.m.

Need Your Input!

- Please complete the survey to help us better serve you!

Save the Dates!

- California English Language Development Test (CELDT) 2013-2014 Pre-Administration Training, **May 29 and September 3, 2013**

<http://santaclara.k12oms.org/1054-67164>

- New English Language Development and CCSS Institute, **June 26-28, 2013**

<http://santaclara.k12oms.org/1054-68276>

- *A Look at Learning: Training of Trainers* **July 29-31, 2013**

<http://santaclara.k12oms.org/eventdetail.php?id=69556>

Save the Dates!

- Dr. Kate Kinsella Institute,
October 9, 2013
- 12th Annual Academic Success Institute
Saturday, **March 8, 2014**
- *A Look at Learning* Showcase,
April 29, 2014