



SDA CALENDAR is now Post-It-Yourself; post workshops, exhibitions & call-for entries [here](#)

FEBRUARY 2012

- :: GOODBYE WITH GRATITUDE TO ANN BROCKETTE
- :: SAN ANTONIO 2013 CALL FOR PROPOSALS
- :: WEBSITE UPDATE: HEAVY TRAFFIC
- :: RESEARCH & INTERNSHIP OPPORTUNITIES
- :: IN MEMORIAM: WALTER NOTTINGHAM + OTHERS
- :: SDA BOARD SHORTS FROM THE PRESIDENT
- :: ON THE MONEY: SDA IN BLACK
- :: SDA MEMBER PARADE OF ACCOLADES
- :: EDITOR'S PICKS: COMPETITIONS + EXHIBITIONS

NEW on SDA NEWSBLOG

EDITORIAL ENCOMIUM: In Praise of Patricia SDA SMALL EVENT GRANT In Action

MAKE A SPLASH THIS SUMMER

Members' Gallery of Surface Design Association

<p>Els van Baarle</p>  <p>Surface design with wax, dye and silkscreen. email: elsvanbaarle@elvanbaarle.nl www.elsvanbaarle.com</p>	<p>Darcy Berg Photography • Textile Art Accepting Commissions</p>  <p>Phone: 813-987-4400, berg@darcyberg.com www.darcyberg.com</p>	<p>Betty McMullen</p> <p>Betty McMullen creates colorful and fiber art in her studio in Charleston, W. Virginia and sells her work in her studio. For more information on the artist, email betty.mcmullen@gsu.edu or visit www.bettycmullen.com.</p>  <p>Phone: 803-785-2211, Fax: 803-785-2211 www.bettycmullen.com</p>
<p>Patsy Chung</p>  <p>A View Within The color of the world is in the eye. www.aviewwithin.com</p>	 <p>JUDY BALES Body as Site fiber sculptures and installation art www.judybales.com</p>	<p>Linda Colish</p>  <p>Phone: 800-222-2222 www.lindacolish.com</p>

To be included in the next Members' Gallery Page - email: advertising@surfacedesign.org

SDA SEEKS EXECUTIVE DIRECTOR



Ready to apply your business acumen to an arts non-profit? **SDA needs you!**

We seek a **high-energy member** ready to collaborate with staff, contractors, volunteers & board to **lead our organization to further**

growth & enhanced member services.

Demonstrated **management, planning, fundraising & organizational expertise** are crucial. Also key are **dedication, sensitivity to/tolerance of differing views, community-building skills, a great sense of humor + enthusiasm.**

In return, become part of a committed team who contribute above & beyond any job description to **make a difference.**
Add your leadership & creativity to grow SDA.

Application period is FEBRUARY 7 - 24
Start date is MONDAY MARCH 26

IN SDA JOURNAL

RESERVE YOUR SPACE NOW IN SUMMER 2012 MEMBERS' GALLERY

Special Member Rate:

1/6 color page for \$100 (Ad layout included)

Contact: **Kathy Velis Turan**

advertising@surfacedesign.org

Start date is **MONDAY MARCH 26**

(Requires attendance at spring board meeting in Philadelphia April 1-3.)

All inquiries and applications may be directed in confidence to: secretary@surfacedesign.org

Download complete job description & application (PDF) under **Executive Director** on Board & Staff page of SDA website here:

www.surfacedesign.org/about-us/our-board-staff

LETTER FROM SDA BOARD: A GOODBYE WITH GRATITUDE TO ANN BROCKETTE



Ann stepped in as interim **Executive Director** when SDA needed her most. Ann's skills include strategic planning & improving lines of communication. Though she was initially introduced to SDA Board as a consultant trained to facilitate rewriting of the organization's mission &

vision statements, **Ann enthusiastically embraced the multi-faceted role** of Executive Director in 2010.

During her tenure, the SDA website committee re-imagined & launched a **new, interactive site** that vigorously **promotes the work of SDA members**. She led a team that won funding to pay for **10 SDA Scholars** (K-12 teachers) to attend the 2011 Confluence conference & workshops in Minneapolis. She **stabilized** the organization's structure & **implemented long-needed policies** for staff review & retirement. **She led the budget from red to black for the first time since 2006**. She orchestrated the **hiring of incoming SD Journal Editor Marci McDade** when the formidable Patricia Malarcher announced her retirement after 18 years.

Ann's sense of humor & playfulness was always appreciated! Any member who attended the 2011 conference in Minneapolis will recall the SDA-branded M&M's she passed around in the Members' Lounge. **Her personal outreach to SDA members was exemplary.**

The SDA board accepted Ann Brockette's resignation as of January 31. We wish her all the best in her future endeavors. **Thank you, Ann, for your service, commitment and continued support of SDA & its mission.**

SAN ANTONIO 2013



www.surfacedesign.org
517-966-0252

SDA BOARD SHORTS

NEWS in brief from President CANDACE EDGERLEY

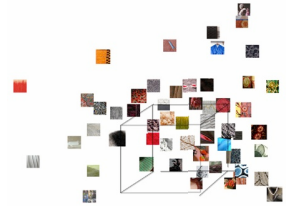
IDENTITY CONFERENCE

I'm looking forward to Philadelphia in March!

Registrations for SDA/SAQA **Identity: Context & Reflection**

Conference have exceeded expectations.

This program + **FiberPhiladelphia** exhibitions are designed to inspire. **Amy Orr & Dianne Koppisch-Hricko** of **FiberPhiladelphia** have orchestrated a full & stimulating weekend. Join us! We still have space available for both conference & workshops.



PERSONNEL: SDA Staff & Board are in flux. We thank **Ann Brockette**, who recently resigned as **Executive Director**, for her guidance & dedication over the last 2 years. We wish her well.

Welcome to new **Surface Design Journal** editor **Marci McDade**. You'll want to reflect on the legacy of **Patricia Malarcher**, her predecessor, by reading this glowing tribute recently posted on **SDA NewsBlog**.

We are also pleased to add **Deborah Kruger & Peggy O'Heron's** talent & perspective to SDA Board.

COMMITTEES IN ACTION: Since November, **Deborah Kruger, Leesa Hubbell, Kathy Velis Turan, Jeanne Beck & Ann Brockette** have been focused on **SDA MARKETING & PR**. Assisting them with committee work are **Liz Hager & Marci McDade. Teresa Paschke, Christine Miller & Jennifer Girona** have been working together on several **GRANT** applications & ideas for **FUNDING** future projects. **SDA is indebted to these board, staff & volunteer members who contribute uncountable hours toward energizing its mission to promote the textile arts.**

GIVING: Grateful thanks to those who responded to our **2011 Annual Giving Campaign**. Your donations helped to expand SDA grants & awards programs plus boost funds for new member benefits. Your generosity toward SDA is priceless.



**REGISTER NOW FOR
SDA + SAQA 2012 CONFERENCE**



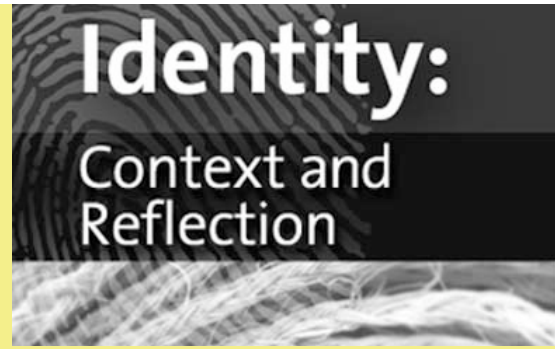
**Interface: SDA International Conference
CALL FOR PROPOSALS**

Exhibitions, Presentations, Panels,
Demonstrations & Workshops
JUNE 6-9, 2013

Proposals Accepted Online Starting
JANUARY 17 - MARCH 1, 2012

Guidelines here:

www surfacedesign.org/conference



Philadelphia/West Conshohocken, PA

CONFERENCE:

March 30 - April 1, 2012

Art Quilt Elements Opening: Friday, March 30

Tour Day: Saturday, March 31

Outside/Inside the Box Opening: March 31

WORKSHOPS:

April 2 - 4, 2012

DOWNLOAD FULL BROCHURE PDF

here: www surfacedesign.org

REGISTER NOW AT

www.saga.com

**FIND A ROOMMATE
ON FACEBOOK UNDER "NOTES"**

www.facebook.com/Surface.Design.Association

SDA WEBSITE UPDATE

from SDA Website Manager LM Wood

WEBSITE TRAFFIC ON THE RISE

55,019 unique visitors from 110 countries
in January 2012

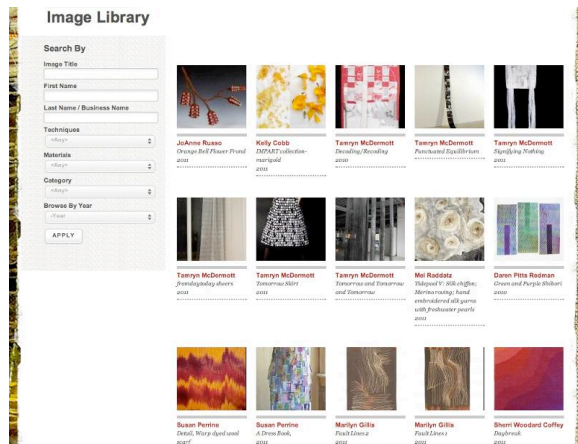


IMAGE LIBRARY IS

- 1) continually in Top 5 pages viewed
- 2) in Top 5 entry pages (1st page visited)



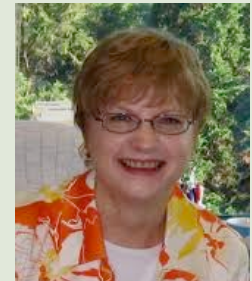
With over 1140 works now on view, members are reporting visits from galleries & curators. Kudos to all who have uploaded images + completed profiles with headshots. If you haven't yet, what are you waiting for?

ON THE MONEY

SDA Financials from Treasurer MELINDA LOWY

SDA ENDS 2011 IN THE BLACK

BIG THANKS to all SDA members - especially our reps & other volunteers - who generously donated their time, money & other support to SDA in 2011. Thanks to you, SDA ended 2011 with a positive balance in both Operating Budget and Conference Budget!



Total Income \$339,846
Total Expenses -\$303,064
Positive Balance \$36,782

NOT SINCE 2006 has SDA ended a year with a positive balance in its Operating Budget! This was achieved ONLY because staff held down expenses

DREAM OPPORTUNITIES



Pre-Doctoral Research Fellow ICA/Boston seeks a graduate student research fellow with excellent research/writing skills + a **specialization in modern and/or contemporary art** to assist with research/writing for an upcoming

exhibition (June 2013) & accompanying publication. This thematic exhibition will **trace a line of abstraction in fiber-related artworks** from the mid-20th century to the present.

The "baggage" of craft-specific materials - such as ceramic, glass, and thread - is disappearing, and recent works by Nick Cave, Jim Drain, Lara Schnittger, Piotr Uklanski, Josh Faught, & Ruth Laskey demonstrate a revitalized & less fraught use of fiber, most specifically as a material with which to explore abstraction of all kinds. By integrating works from the self-identified worlds of art, design, & craft, as well as work made at greatly varying scales, this exhibition will allow an expanded platform for the consideration of medium & concept.

www.icaboston.org/about/working-at-the-ica/employment/grad_research_asst_mellongrant/



3-month annual SUMMER INTERNSHIP (scholarship) & arts management/art education residency offered under the auspices of **Society for Contemporary Craft (Pittsburgh, PA)**. **DEADLINE IS MARCH 15.**

www.contemporarycraft.org/The_Store/internships

IN MEMORIAM



and, with reps/volunteers, gave tirelessly to further SDA mission & member services.

Confluence/2011 SDA Conference, under Dot Moyer's outstanding management, was also a success. It generated income of \$242,881 against expenses of \$224,540 for a **surplus of \$18,341**. Again, **HUGE THANKS** to all conference volunteers who helped make it such a success educationally, creatively *and* financially.

For greater detail on the Operating Budget, all Annual Reports are available on [SDA website](#). After logging in, click on **Member Resources** at the top of your profile page then on **Financial Reports**.

Questions? Please contact me at treasurer@surfacedesign.org



Get daily textile arts 411 on SDA facebook **PAGE**
Join **SDA Members Only** facebook **GROUP**
Join SDA discussion on **LinkedIn**

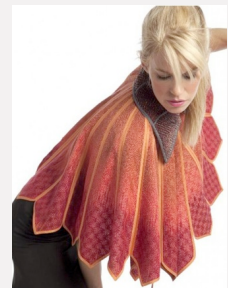
SDA MEMBER PARADE OF ACCOLADES

Congratulations to 2 more SDA members who were awarded a 2012 **NICHE AWARD**:



BONNIE J. SMITH
(CA) for *Color x 3 Orange* in **Art Quilt** category.

MARIE PAYNE (ON/Canada) for *Ring of Fire* (in collaboration with Josette Luyckx) in **Fiber: Wearable** category.



AND
Newark Museum acquired **MARILYN HENRION'S** *Disturbances 8* for its permanent collection.

If you've recently received an award or accolade please send brief description in body of an email along with links & low resolution image & headshot to SDAbuzz@gmail.com





WALTER NOTTINGHAM

Please join the **University of Wisconsin/River Falls** community in extending our sincere condolences to the family of Walter Nottingham, emeritus professor of art, who died January 26 in Hawaii after a brief illness. Walter began teaching at the University of WI-River Falls in 1962, where he and his colleagues helped create the art department as it exists today. He built an international reputation as a **fiber artist**. He taught fibers at UWRF until 1990 when he retired to Hilo, Hawaii with his wife Lee. Walter was a graduate of Cranbrook Academy of Art in Bloomfield Hills, MI. A memorial service may be held this summer. Donations can be made in his honor to the Walter and Lee Nottingham Art Department Scholarship Fund at UWRF.

- Courtesy of **Morgan Clifford**, UWRF Faculty
See remembrances on SDA Facebook Members Only Group page here:

www.facebook.com/groups/256626061018663/

JAN PETERS

Champion of craft & co-founder/director of **del Mano Gallery** in Los Angeles passed away December 5.
Read her *American Craft* remembrance here:

americancraftmag.org/blog-post

MARTHA HIBBERD

A supporter and promoter of textile arts, Marty co-owned **Hibberd McGrath Gallery** (founded 1982) with Terry McGrath Craig in Breckenridge, CO.
Read her obituary here:

www.summitdaily.com

MIKE KELLEY



Mike Kelley's psychologically complex work was instrumental in making L.A. an international capital of contemporary art. Read his LA Times obit here:

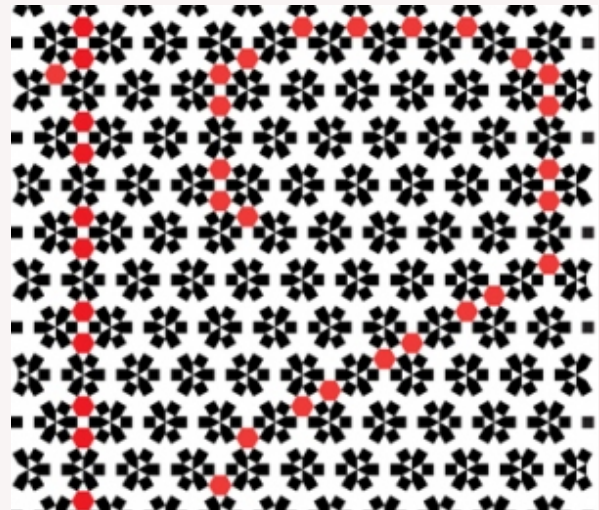


SDA Member work above curated from SDA Image Library
by **Digital News Editor Leesa Hubbell**
Banner design by **LM Wood**
Have your work considered for next eNews banner
by completing your member profile on [SDA website](#)

- [LM Wood](#) Feather Head
- [Della Reams](#) Eyelash Dress
- [Silvia Piza-Tandlich](#) Indigenous Groove
- [Chris Allen-Wickler](#) Rock Star
- [Heather Macali](#) Warped (Installation)
- [Catherine Armbrust](#) Garden Party
- [Mirjam Pet-Jacobs](#) Mantra III

COMPETITION DEADLINES

Editor's Pick for February:



1st CONTEXTILE 2012

Trienal de Arte Textil Contemporanea

Submissions must contain TEXTILE element by construction, material used or by chosen theme/concept

DEADLINE: FEBRUARY 15

DETAILS: contextile.wordpress.com

GUIMARAES, PORTUGAL

View more competition deadlines on [SDA CALENDAR](#)

SELECTED EXHIBITIONS

HELP US PROMOTE YOUR WORK

SDA website gets **50,000+** hits a month.

We want to promote your work to every corner of the world - and World Wide Web.

We need your assistance.



HELP US BUILD OUR PRESS LIST

Send us contact information/email address of pr person/publicist at galleries, museums, guilds, fiber departments, libraries, textile-focused organizations or other venues IN YOUR AREA that should know about us - and YOU.

Put "PR List" in the subject line then send your contacts to: art@deborahkruger.com

GET IT ON

Competition Deadlines

November						
M	T	W	T	F	S	S
1	2	3	4	5	6	
7	8	9	10	11	12	13
14	15	16	17	18	19	20
21	22	23	24	25	26	27
28	29	30				

- Bellevue Arts Museum Biennial 2012: High Fiber Diet** (12/12/2011 All day) - Bellevue Arts Museum is seeking artists and craftsmen working in fiber in the Northwest (AK, BC, ...)
- 18th Annual RAGS Wearable Art Sale and Show** (12/14/2011 All day) - The YWCA RAGS Guild is delighted to present RAGS 2012, the 18th Annual Wearable Art Sale and...
- The Unfinishable** (12/13/2011 All day) - Tunford UK - As makers we all sometimes produce work that we are unable to finish. Trying to discover the...
- Quilt Visions 2012: Brainstorms at Visions Art Museum: Contemporary Quilts + Textiles** (01/01/2012 - 02/17/2012) - San Diego USA - Exhibition dates: October 20, 2012 - February 17, 2013.
- Small Expressions 2012** (02/12/2012 - 02/01/2012)

SDA WEBSITE CALENDAR

TAKE CONTROL of promoting your event or opportunity by *posting it yourself*.

TAKE ADVANTAGE of this new member benefit: **SDA Members post for free.**

TAKE NOTE: To create a rich resource for all, **INSTITUTIONS, GALLERIES & MUSEUMS** are invited to **post for free** but are encouraged to support SDA with an active membership.

TEXTILITY

This 3-gallery survey is not about "fiber art" but about the way fiber has insinuated itself into the fabric of contemporary art.

NOW through April 1

Visual Arts Center of New Jersey



SUMMIT, NJ

Take a virtual tour on co-curator Joanne Mattera's art blog here: joannemattera.blogspot.com/p/textility

FRESH FIBER REVISITED: Work by Emerging Textile Artists from RISD, UMass-Dartmouth & MassART



Brings back together fiber & textile design programs from 3 prominent schools, allowing visitors to experience the wide range of possibilities within the field of fiber art.
December (2011) by Olivia Frassenelli shown above.

NOW through April 22

FULLER CRAFT MUSEUM BROCKTON, MA

PROMOTE YOUR EVENT POST-IT-YOURSELF ON SDA CALENDAR
[www.surfacedesign.org/calendar](http://www surfacedesign.org/calendar)

Use Our Site

- Sitemap
- Terms & Conditions
- Privacy Policy
- Amazon
- Job Board
- SDA Press Releases

BE AN SDA + AMAZON ANGEL!

Click through to **AMAZON** via SDA website footer (as shown at left) **WHENEVER** you shop Amazon.



DOWNLOAD POSTING POLICIES & FAQ
to make sure your event gets attention [HERE](#)

TO POST YOUR EVENT GO TO:
www surfacedesign.org/node/add/event

* * *

Contact SDA Website Manager LM Wood
with your questions & comments here:
webcomments@surfacedesign.org

A small donation will be made
to SDA - at *no additional cost*
to you - that will support SDA
member benefit programs &
initiatives.



THANK YOU for your support!

HOW-TO INSTRUCTIONS For Creating Your Member Profile Page



www surfacedesign.org

LOGGING IN:

To access **Member Profile page**, click on the link "**Log In**" located at the top right corner on any web page of SDA site.

Enter your email address and password.

If you don't remember your password, click the button indicated. Your email address & password can be customized once you enter & access your member information.

ADDING IMAGES TO YOUR PROFILE:

Click on the link "**Add Image**" to upload images of your work.

Click on the link "**Edit Profile Info & Headshot**" to access other sections of your profile such as:

ACCOUNT: Update your email address, password & eNews subscription options

PROFILE: Access your personal membership information - including your mailing address, headshot & links

RENEWAL: Online using Paypal

MEMBER RESOURCES: Visit this area to access back issues of SDA eNews emails and financial reports

FOR INFORMATION + ASSISTANCE:

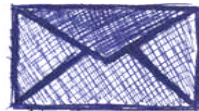
Check out **Colorado State Blog/All Things SDA** for additional instructions on creating your profile
sdacolorado.org/how-to/create-your-profile-on-the-sda-site

Contact SDA Website Manager LM Wood
webcomments@surfacedesign.org

CONTACT
eNews EDITOR
ABOUT

eNews CONTENT

newslettereditor@surfacedesign.org



FOR ALL OTHER ISSUES

(mailing list, dvd orders, website issues...)

CONTACT

info@surfacedesign.org

EXPERIENCING eNews VIEWING ANOMALIES?

For best rendering, view eNews in **Chrome, Firefox 3, Internet Explorer 7 or 8 and Safari** browsers.
If you experience "trouble" (graphic anomalies), try opening in a separate window per instructions at top.

[Forward email](#)



This email was sent to info@surfacedesign.org by info@surfacedesign.org | [Update Profile/Email Address](#) | Instant removal with [SafeUnsubscribe™](#) | [Privacy Policy](#).

Surface Design Association | P.O. Box 360 | Sebastopol | CA | 95473