



Your Solutions Partner

Specifications

F.O.B. Sedalia, Missouri 65301



Fry Holding Unit

OPTIONS:

- Additional dividers for holding bin
- Black paint grip panel to match burger chute

SHELVES: (select one)

- Telescoping shelf
- Left hand shelf
- Right hand shelf

AGENCY LISTING:



DUKE MANUFACTURING CO.

**2305 N. Broadway
St. Louis, MO 63102**

**800.735.3853 Toll Free
314.231.5074 Fax
www.dukemfg.com**

Approval Stamp(s):

FRY HOLDING UNIT

PRODUCT INFORMATION:

PROJECT: _____

ITEM: _____

QUANTITY: _____

MODEL:

Fry Holding Unit - Air Scroll

FHUAS-2

BODY:

- Removable easy-to-clean basket and filtration system
- Front access to all critical components for ease of maintenance
- Adjustable dividers for holding multiple types of product
- Dual sided accessory package for enhanced ergonomics
- Shelving options include LED lighting for visual enhancement

TECHNOLOGY:

- Simple on/off system controls factory pre-set air flow and heat for optimum performance
- Dual zone system allows you to operate both zones during peak periods or a single zone during non-peak periods for energy savings
- Unique Air Scroll technology allows for heated air to blanket the food maintaining ideal sensory attributes for longer hold time

INCLUDED ACCESSORIES:

- Ticket rail
- Full length fry ribbon
- Fry packaging holder with movable dividers
- Condiment holder with movable dividers
- Removable tong holder
- Dual sided fry scoop holder
- Dual sided onion ring holder

DESCRIPTION:

Fry Holding Unit The FHUAS uses Air Scroll technology to ensure consistently hot fries every time you serve your customers. This product allows you to maintain the optimal food sensory attributes, regardless of when the product is served during the hold time. This unit is ideal for fried foods.



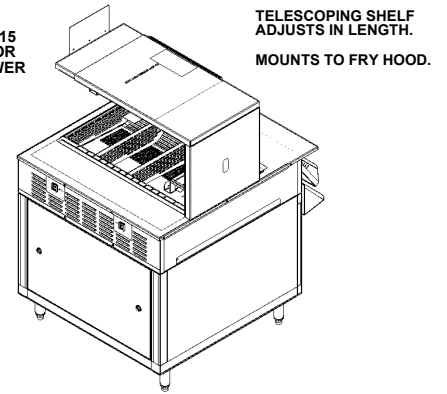
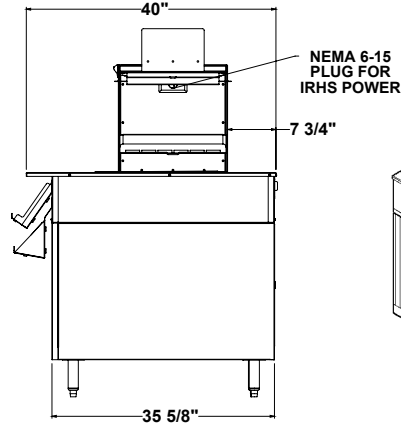
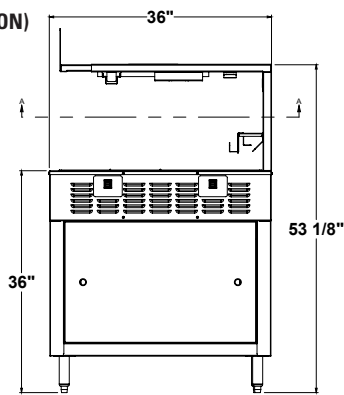
FRY HOLDING UNIT - AIR SCROLL

ELECTRICAL REQUIREMENTS:

| |
|---|
| 120V (X2) 20 AMPS EACH FOR FRY HOLDING UNIT |
| 208V (X1) 15 AMPS FOR OPTIONAL IRHS HOLDING UNIT |
| DUKE FRY HOLD STATION IS SUPPLIED WITH (2) 6' CORDS WITH NEMA 5-20 PLUGS & (1) 6' CORD WITH NEMA 6-15 PLUG. |
| CUSTOMER MUST PROVIDE APPROVED RECEPTACLES FOR EQUIPMENT |

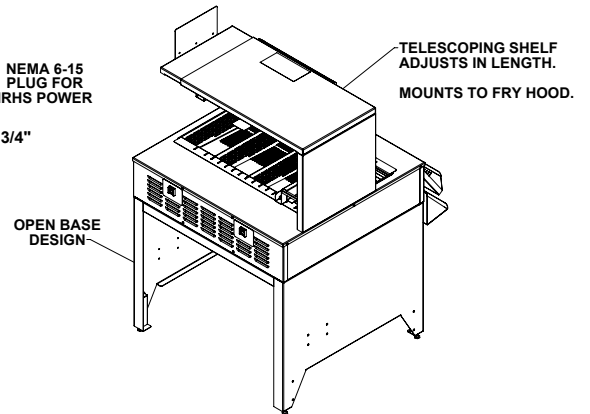
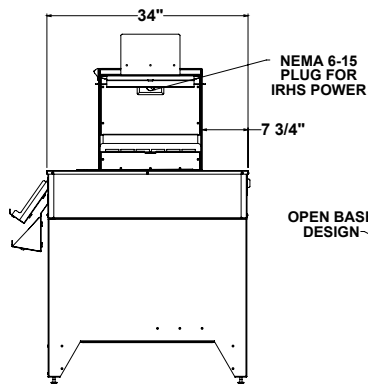
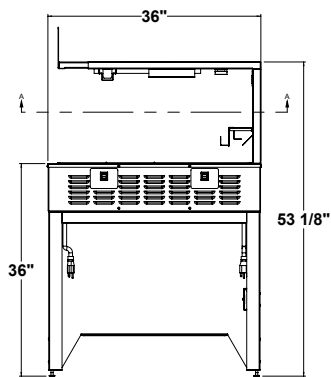
FHUAS-2-120-40-I

(K585 DUKE BURGER STATION)



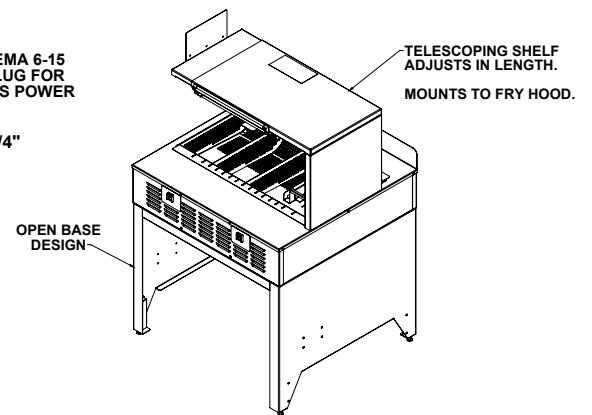
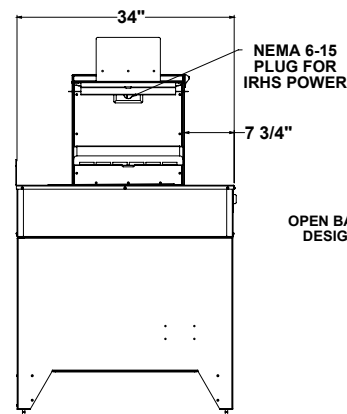
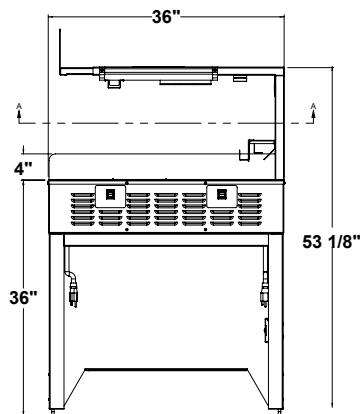
FHUAS-2-120-34-S

(K585 STORE LAYOUT)



FHUAS-2-120-34-W

(ROC STORE LAYOUT)



DIMENSIONS:

| Model | Overall Height | Overall Width | Overall Depth | Crated Weight |
|------------------|----------------|---------------|---------------|---------------|
| | in | in | in | lbs |
| FHUAS-2-120-40-I | 53 1/8 | 36 | 40 | 450 |
| FHUAS-2-120-34-S | 53 1/8 | 36 | 34 | 450 |
| FHUAS-2-120-34-W | 53 1/8 | 36 | 34 | 450 |



DUKE MANUFACTURING CO.

2305 N. Broadway
St. Louis, MO 63102

800.735.3853 Toll Free
800.231.1130 In Missouri
314.231.5074 Fax
www.dukemfg.com

Specification subject to change

Printed in U.S.A
© 2015, Duke Manufacturing Co.