

# PUBLIC AUCTION

On instructions from Govt Depts., Administrators, QLD Police, Importers & Private Vendors

**MOBILE PLANT & MACHINERY, OFFICE, FURNITURE, CATERING, TOOLS, VEHICLES**

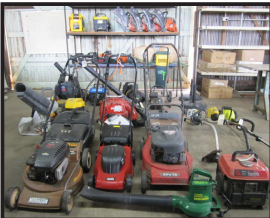
FRIDAY 27 MARCH, 2015 9:30AM START

**401 Sheridan Street, Nth Cairns (Opp. Airport Turnoff)**



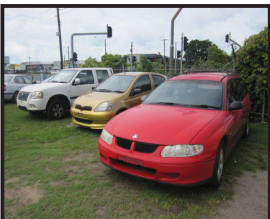
**OFFICE:** Office Chairs Desks & Tables, Computer Monitors, Visitor Chairs, Desktop Computers, Scanners, Printers, Speakers, Filing Drawers, Student Desks, Amazon Readers, Laminate Machine, Apple Ipad, Projectors.

**FURNITURE:** Queen & Double Ensemble Beds, Queen Bedheads, Sofa Beds, Mahogany Dressing Tables & Cabinets, Lounge Suites, Dining Settings, Coffee Tables, Cane Furniture, Patio Settings, Bookcases, Chest of Drawers, Entertainment Units, Floor Rugs, Occasional Tables.



**CATERING:** Commercial Pizza Oven, Banquet Chairs, Display Bench Fridge, Bakers Racks, S/S Bar Complete with Fonts, Stainless Steel Sinks, Coffee Machine, 2 Door Fridges, Chest Freezers, Ice Cream Freezer, 6 Door Stainless Steel Fridge, Waldof Twin Bay Deep Fryer, Taylor Soft Serve Machine, Microwaves, Stainless Steel Benches, Crockery Glasses, Dishwasher Racks.

**HARDWARE & TOOLS:** Corrugated Iron Guillotine, Supagas Heat Shrink Gun, Welders, Straight Shaft Whipper Snipper, Chain Saw, Winches, Electric Blowers, Power & Hand Tools, Air Compressors, Mower Tyres, Forklift Tyres, Backpack Blowers, Mowers, Wheel Balance Machine, Feed Rollers, Trestles.



**VEHICLES:** 10 Great-Wall SA220 Dual Cab, 08 Toyota Prius Hatch, 08 TGB Xmotion 250 Scooter, 05 Ford Falcon Wagon, 05 Ford Territory Wagon, 04 Holden Utility, 04 Hyundai Elantra Hatch, 03 Mitsubishi Magna, 01 Holden Commodore Sedan & Wagon, 00 Mitsubishi Mirage, 00 Toyota Echo, 99 NPR Isuzu 300 Medium Truck Cab, 87 Mitsubishi FM Series Dual Axle Tray Truck, 85 Mitsubishi Magna GLX, Suzuki AE50 Motor Scooter.



**MOBILE PLANT & MACHINERY:** 12 John Deere 670G Grader, 11 Komatsu FG40Z1-7 4T Industrial Forklift, 06 DAF 73.310 Diesel Powered 4x2 Prime Mover, 05 Boxer TL224 Rubber Tracked Skid Steer, Bobcat T300 Compact Skid Track Loader, Snorkel TB-A80RFO Allterrain Boom Lift, Toyota 42-3FG25 Forklift, Ablution Block.

**MISC:** 89 Two Axle Machinery Trailer, 84 Viscount Aero-Lite Caravan, Tradie Trailers, Camping & Fishing Items, Golf Clubs, Jewellery, World Globes, Guitars, Security Screen Door, Motor Bike Helmets, Jackets & Gloves, Art, Telescopes, NRL Memorabilia, Iphones, American Chopper Diecasts, Collectable Ferrari's & Harley Davidson, Vibrating Exercise Machine, Cameras, Wii, Xbox, Basins, DVD Players.



Inspection day prior 3 till 6 p.m. and morning of sale  
E-mail catalogue requests to: [auctioneers@quaid.com.au](mailto:auctioneers@quaid.com.au)  
Note: A 13.5% Buyers Premium will be added to the knockdown price of each lot sold, excluding Vehicles to which a 7.7% Premium will apply. Vehicles are sold without Statutory Warranty and are not subject to a Cooling off Period.  
This is a GST Inclusive Sale

**Quaid**  
AUCTIONEERS

**AUCTIONEERS & VALUERS**

35 Lake Street, Cairns Qld 4870

Web: [www.quaid.com.au](http://www.quaid.com.au)

Ph: (07) 4051 3300

Fax: (07) 4051 9470

**TERMS AND CONDITIONS OF AUCTION SALE**  
**Quaid Real Estate Pty Ltd T/As QAUID AUCTIONEERS (ACN: 010331423)**  
**AS AGENT FOR THE SELLER (Hereinafter "the Company")**

1. The highest approved bidder for each lot shall be the Purchaser subject to the approval of the Vendor and the reserve price if any.
2. If any dispute or difference shall arise as to the highest bidder the Auctioneer may re-open the bidding and resubmit the lot for sale commencing with the highest amount previously bid for the lot or the Auctioneer may decide on the highest bidder in such other manner as he in his absolute discretion shall deem fit. The decision of the Auctioneer shall be final and no bidder shall have any right of recourse against the Auctioneer, the Company or the Vendor.
3. Where any person is bidding on behalf of another person, the bidder must first provide the Auctioneer with a copy of his written authority to bid and enter into an Agreement for Sale and Purchase of the lot to the Auctioneer prior to the commencement of the Auction otherwise the bidder is deemed to be acting on his own behalf.
4. The Auctioneer may at his discretion refuse to accept any bid from any person and no bid if accepted shall be retracted without the consent of the Auctioneer. The Auctioneer may decline the offer for any lot or withdraw any lot or lots from sale prior to the fall of the hammer for the particular lot or lots.
5. Each purchaser shall immediately after the fall of the hammer for a lot show to the Auctioneer their bidder registration number.
6. The whole of the lots having been available for inspection prior to the auction no allowance or refunds will be made nor will any Purchaser be permitted to reject any lot on the ground that it is not correctly described in the catalogue. **The said lots are to be taken with all faults and defects (if any) and will be at the risk of the Purchaser on the fall of the hammer and thereafter the Vendor will be free of all responsibility for safe guarding the lot and will not be liable for any loss of or damage to the lot sold whether such loss or damage is caused or contributed to be any act neglect or default of the vendor its servants employees or agents.**
7. The purchaser accepts all risk and responsibility for losses, damages, personal injury and other consequences resulting directly or indirectly from the purchase of any lot and indemnifies the Company against all expenses, losses, damages and costs the Company may occur directly out of or in connection with: a) any personal injury caused to any person as a result of the use of the lot purchased from the Company; b) any damage caused as a result of the use of any lot purchased from the Company; and c) any negligence, breach of duty or breach of statute by the purchaser in connection with the use of the lot purchased from the Company. To the maximum extent permitted by law, the purchaser excludes all liability directly or indirectly from the purchase of the lot.
8. The balance of the purchase price shall be paid by the Purchaser in cash, cheque, telegraphic transfer, eftpos, credit card (visa or mastercard subject to a 2.2% Administration Fee), no later than 4.00pm on the day of the sale (unless prior arrangements have been made by the Purchaser with the Vendor). In the event of delivery being made or possession obtained by the purchaser prior to payment in full of the purchase price Title and property in the lot does not pass to the purchaser.
9. Should any deficiency arise between the quantity of goods described at the time of sale and that available at the time for delivery the Purchaser shall take and the Auctioneer shall be required to effect delivery of only the quantity actually so available. No compensation will be paid in respect of any such deficiency but the Purchaser may claim a pro-rata adjustment of purchase price. No adjustment will be made unless the Purchaser makes this claim at or before the time of delivery.
10. All lots which have been paid for in full must be removed by the Purchaser at the Purchaser's expense by 4.30pm on the day of the sale (unless prior arrangements have been made by the Purchaser with the Vendor) or as specified at the time of sale.
11. Upon any Purchaser failing to comply with any of the above conditions all monies received in part payment of the purchase price shall be absolutely forfeited to the Vendor and all lots not removed as aforesaid may be re-sold by public auction or private contract and the deficiency in price (if any) on such resale together with all costs and charges incurred in attending thereto shall be paid forthwith by the defaulting Purchaser and if not paid the Vendor has the right to recover such amount from the defaulting Purchaser as a debt.
12. Time shall be of the essence of the sale of any lot.
13. The Auctioneer reserves the right to one bid.
14. Terms are strictly cash before delivery.
15. Special Conditions Re: Electrical Appliances: These appliances are in a used condition and no warranty is given that their present condition complies with the safety requirements of the State Electricity Commission. It is pointed out that under the State Legislation the Purchaser is required before re-sale or use to have the appliance examined and repaired by a registered electrical contractor.
16. The Purchaser acknowledges that all lots purchased are subject to a "Buyers Premium" at a rate as stated in the Company's advertisements and catalogues. The Buyers Premium will be payable at the same time as the purchase price and is payable to the Company in consideration for services and facilities provided to the Purchaser by the Company.
17. A right to bid by or on behalf of the Vendor is expressly reserved.
18. Unless otherwise stated, goods are sold on a GST Inclusive basis.
19. The purchaser acknowledged that the Company is acting as authorised agent of the Vendor and any rights of action he may have in respect to the lots purchased by him lie against the Vendor and not the Company.
20. No servant or agent of the Company is authorised to waive, add to or vary these conditions without the written authority of the Managing Director.
21. \* Denotes that the Company has a beneficial interest.

**These conditions are to be read in conjunction with any special conditions outlined in the sales catalogue. Where there is inconsistency between the conditions herein and the Auction Catalogue, the Catalogue will take precedence.**

**NOTE TO BUYERS:**

- THIS IS A GST INCLUSIVE SALE. A 13.5% BUYERS PREMIUM APPLIES TO THE KNOCKDOWN PRICE OF EACH LOT SOLD EXCLUDING VEHICLES TO WHICH A 7.7% BUYERS PREMIUM & SELECTED MOBILE PLANT TO WHICH AN 11% BUYERS PREMIUM WILL APPLY.
- VEHICLES/MOBILE PLANT ARE SOLD WITHOUT A STATUTORY WARRANTY, ARE NOT SUBJECT TO A COOLING OFF PERIOD AND ARE SOLD UNREGISTERED AND WITHOUT A ROADWORTHY CERTIFICATE. "CP" INDICATES VEHICLES AUSTRALIAN COMPLIANCE DATE.
- TESTING FACILITIES FOR ELECTRICAL ITEMS ARE AVAILABLE ON THE DAY OF INSPECTION. PLEASE SEE OUR STAFF FOR ASSISTANCE.
- PURCHASERS OF ALCOHOL MUST BE OVER 18 YEARS OF AGE.
- PLEASE NOTE SOME LOTS ARE SOLD ON BEHALF OF THE LOSS ADJUSTORS. IT IS RECOMMENDED THAT INTENDING PURCHASERS INSPECT INDIVIDUAL ITEMS PRIOR TO BIDDING.
- PLANT SAFETY INFORMATION: EQUIPMENT OFFERED FOR SALE AT THIS AUCTION MAY NOT COMPLY WITH WORKPLACE HEALTH & SAFETY STANDARDS. PRIOR TO RE-USE PURCHASERS ARE REMINDED OF THEIR OBLIGATIONS AS AN OPERATOR OF PLANT UNDER RESPECTIVE STATE BASED OHS LEGISLATION TO COMPLETE PLANT RISK ASSESSMENTS FOR THE INSTALLATION, COMMISSIONING AND OPERATION FOR THE PLANT ITEMS PURCHASED.
- WHERE MULTIPLE QUANTITIES ARE OFFERED AT AUCTION, LOTS ARE SOLD ON A PER EACH BASIS, WITH THE HIGHEST BIDDER GIVEN THE OPPORTUNITY TO TAKE 1, OR MORE AT THE BID PRICE, OR IN MINIMUM QUANTITIES AS NOMINATED BY THE AUCTIONEERS AT THE TIME OF SALE.
- ANY MENTION OF PRECIOUS METALS AND/OR GEMS, CARAT OR WEIGHTS CONTAINED IN THE CATALOGUE IS A GUIDE ONLY. NO SALE SHALL BE INVALIDATED AND NO COMPENSATION SHALL BE PAID IN RESPECT OF ANY FAULT (WHETHER ASCERTAINABLE ON INSPECTION OR LATENT), OR ERROR OF DESCRIPTION IN THE AUCTION CATALOGUE OR OTHERWISE. THE MENTION OF PRECIOUS METALS, GEMS, CARATS OR WEIGHTS IS INCLUDED TO ASSIST POTENTIAL BIDDERS TO DECIDE WHETHER OR NOT TO ATTEND THE AUCTION AND DOES NOT CONSTITUTE ANY WARRANTY AS TO QUALITY, FITNESS FOR PURPOSE OR ACCURACY, ALL CONDITIONS AND WARRANTIES IMPOSED BY STATUTE (IN RELATION TO THE STATE, QUALITY OR FITNESS OF THE GOODS AND OF EVERY OTHER KIND) ARE HERBY EXPRESSLY EXCLUDED. NO RESPONSIBILITY IS ACCEPTED BY THE AUCTIONEER OR HIS PRINCIPAL FOR THE ACCURACY OF ANY STATEMENT, OPINION OR INFORMATION CONTAINED IN THIS CATALOGUE AND POTENTIAL BIDDERS SHOULD RELY ON THEIR OWN ENQUIRIES ON INSPECTION BEFORE BIDDING.
- PAYMENT ACCEPTED CASH, CHEQUE, TELEGRAPHIC TRANSFER, EFTPOS, VISA & MASTERCARD ONLY. PLEASE NOTE A 2.2% ADMINISTRATION FEE WILL APPLY TO CREDIT CARD TRANSACTIONS.

**BANK ACCOUNT DETAILS FOR DIRECT DEPOSITS:**

BANK:	ANZ
BRANCH:	GRAFTON STREET, CAIRNS
BANK ACCOUNT NAME:	QUAID REAL ESTATE TRUST ACCOUNT
BRANCH NO.:	014 734
ACCOUNT NO.:	3818 39175

---

LOT NO	QTY	DETAILS
--------	-----	---------

---

## SALE STARTS AT LOT 1 AT 9.30 AM

### SPECIAL LOTS 834-953 WILL BE OFFERED AT 12 NOON

1	1	<b>Apple Mac Book Pro Notebook</b> 2.4Ghz, Intel Core I7 Processor, 4Gb RAM, 750Gb HD, Incl. Power Cable, Mouse & Operating System
2	1	<b>Acer Aspire One Laptop</b> 1.66Ghz Intel Atom 450 CPU, 1Gb Ram, 120Gb HDD, Power Cable & Carry Case
3	1	<b>Apple Mac Book Pro Laptop</b> Note: No Cords
4	1	<b>Packard Bell Laptop</b> Model P5WS6, Red, With Cords, Note: Has Missing Key
5	1	<b>LG NAS Desktop Computer</b> 3.1Ghz, AMD Athlon II X2 255 Processor, 4Gb Ram, 460Gb HDD, 21" AOC Monitor, Keyboard, Mouse, Power & Connection Cables
6	1	<b>Desktop Computer</b> 2.8Ghz AMD Athlon II X2 240 CPU, 4Gb Ram, 230Gb HDD, AOC 21" Monitor, Keyboard, Mouse, Power & Connection Cables
7	1	<b>Solid Timber Extendable Office Table</b> 1200 x 3000 x 750mm
8	1	<b>LG Digital Flat Screen TV</b> Model 80PC10-AA, 155cm with Remote
9	1	<b>Sharp Aquos 37" LCD TV</b> Model LC-37PD5X, Incl. Remote, Note: Wall Mounted
10	1	<b>Dell Optiplex 780 Desktop Computer</b> 3Ghz Intel Core 2 Duo Processor, 4Gb RAM, 250Gb HD, Incl. Dell 20" Monitor, Model P2011HT, Keyboard, Mouse, Power & Connection Cables
11	1	<b>Dell Optiplex 780 Desktop Computer</b> 3Ghz Intel Core 2 Duo Processor, 4Gb of RAM, 250Gb HD, Incl. Dell 22" Monitor Model P2210T, Keyboard, Mouse, Power & Connection Cables
12	1	<b>Qty of (11) Assorted Playstation Games</b> Incl. Worm Farts Under Siege, Player Chest, Smackdown, PC Games & Memory Card
13	1	<b>Lord Safco Combination/Key Safe</b> Model C5001, 400 x 310 x 345mm
14	1	<b>Saitek PC Flight Stick</b> Cyborg Evo Force, Fully Adjustable Feedback Stick, Joy Stick with Cable, USB Connector, Main Adaptor. CD & Quick Start Guide
15	1	<b>Dell Latitude E6400 Notebook</b> 2.5Ghz, Intel Core 2 Duo Processor, 2Gb RAM, 80Gb HD, Incl. Power Cables, Carry Case & Mouse

LOT NO	QTY	DETAILS
16	2	<b>Canon Imageformula Colour Duplex Scanners</b> Model DR-2580C, Incl. Power Supply
17	2	<b>Conference Tables</b> With Leather Insert, Attaches to Wall, 2720 x 1500mm
18	1	<b>Toshiba Satellite C50-13 Notebook</b> 2.16Ghz, Intel Celeron NZ830 CPU, 2Gb RAM, 500Gb HD
19	1	<b>Asus Laptop</b> Model X54C, Note: Power Cables
20	1	<b>Epson LCD Projector</b> Model EB-W12, Incl. Power & Connection Cables, Remote, Stand & Carry Case, Installation DVD & Manual
21	1	<b>Sony Playstation 3 Console</b> Model CECHJ02, 14Gb, complete with Leads, With 2x Controllers
22	1	<b>Dell Optiplex 780 Desktop Computer</b> 3Ghz Intel Core 2 Duo Processor, 4 Gb of RAM, 160Gb HD, Incl. Dell 19" Computer Monitor Model 1908FPB, Keyboard, Mouse, Power & Connection Cable
23	1	<b>Qty of (2) Entertainment Items</b> Incl. Teak DVD Player Model DV225 & Australian Monitor Multi Channel Ampliphier Model AMIS 60
24	4	<b>Dell Optiplex 780 Desktop Computers</b> 3Ghz Intel Core 2 Duo Processor, 4Gb of RAM, 160Gb HD, Incl. Dell 22" Monitor Model P2210T, Keyboard, Mouse, Power & Connection Cables
25	11	<b>Dell Optiplex 780 Desktop Computers</b> 3Ghz Intel Core 2 Duo Processor, 4Gb of RAM, 160Gb HD, Incl. 20" Monitor Model 2009WT, Keyboard, Mouse, Power & Connection Cables
26	1	<b>Sony Dolby Surround Audio/Video Control Centre</b> Model STR-D511, FM Stereo/FM/AM Receiver & (2) Sony Box Speakers, Incl Remote
27	3	<b>Dell Laptop Docking Station Base Plates</b> With Monitor Stands
28	1	<b>(5) Piece Home Theatre System</b> Incl. (2) Side Speakers, (2) Subwoofers & Central Speaker
29	1	<b>Qty of G-Force PC Gaming Items</b> Incl. 9800 GTX Mother Board, 760GS Graphics Card, RAM
30	1	<b>NEC Flat Panel LCD TV</b> Model NLT-46HDB2, 117cm with Remote
31	1	<b>Kenwood Sub Woofer</b> 100W
32	1	<b>LG HD Passive 3D Smart LED/LCD TV</b> 106cm

LOT NO	QTY	DETAILS
33	1	<b>LG TV</b> Model 26LC2R, 60cm, With Remote
34	1	<b>Palsonic LCD TV/DVD Combo</b> Model TFTV6043FHD, 60cm, Note: No Remote
35	1	<b>GVA 12.5" LCD TV</b> Model GVA22UA2
36	1	<b>Changhong Flat Screen TV</b> 23" with Rotating Steel Wall Brackets & AWA DVD Player Model DP220
37	1	<b>DSE LCD TV with DVD Player</b> Model GEC6400, 50mm
38	1	<b>LG Flatron TV</b> Model W2753VC-PF, 70cm, incl. Remote
39	4	<b>Chang Hong 23" Flat Screen TV's</b> With Rotating Steel Wall Brackets, LED, FHD, All with Remotes
40	5	<b>Dell Optiplex 740 Desktop Computers</b> 2.6Ghz, AMD Athlon Dual Core Processor, 4Gb of RAM, 80Gb HD, Incl. Dell 19" Monitor, Power & Connection Cables, mouse & keyboard
41	1	<b>Qty of (5) Dell Laptop Docking Stations</b> Model PR03X
42	1	<b>Canon Multi Function Printer</b> Model K10344, Incl. Power & Connection Cables & Ink Cartridges
43	1	<b>Timber Laminate Shelving Unit</b> With Vinyl Top & (4) Shelves, 1790 x 400 x 910mm
44	28	<b>Hp Laptop Docking Stations</b> Various Models
45	1	<b>Dell Optiplex 780 Desktop Computer</b> 3Ghz, Intel Core 2 Duo Processor, 4Gb of RAM, 160Gb HD, Incl. Dell 22" Monitor Model P2210, Keyboard, Mouse, Power & Connection Cables
46	1	<b>Black Metal Safe</b> With Key & Combination in Built
47	1	<b>Dell optiplex 740 desktop computer</b> 2.6Ghz AMD Athlon Dual Core Processor, 2Gb of RAM, 80Gb HD, Incl. Dell 19" Computer Monitor, Keyboard, Mouse, Power & Connection Cables
48	1	<b>Timber Laminate Office Desk</b> With Vinyl Top, (2) Drawers, 1800 x 880 x 720mm
49	1	<b>HP Compaq Presario Desktop Computer</b> 2.1Ghz AMD Phenom 8400 Triple Core Processor, 3Gb of RAM, 360Gb HD, Incl. Dell 19" Monitor Model 1908FPT, Incl. Keyboard, Mouse, Power & Connection Cables
50	1	<b>Two Tone Timber Laminate Under Desk Drawer Unit</b> Two Drawers, 460 x 430 x 600mm

LOT NO	QTY	DETAILS
51	1	<b>Soho Metal Filing Cabinet</b> With (2) Drawers, 400 x 450 x 670mm, Note: No Keys
52	1	<b>Qty of Saitek Flight Simulation Controllers</b> Incl. Pro Flight Yoke System, Joy Stick, Connection Cables & Mount
53	1	<b>Qty of (19) PC Games &amp; Flight Simulators</b> Incl. Korean Combat Pilot, Tiger Moth, Wings Over Flanders Fields
54	1	<b>Dell Latitude E6400 Notebook</b> 2.5Ghz Intel Core 2 Duo Processor, 2Gb RAM, 160Gb HD, Incl. Power Cable
55	1	<b>Samsung 3D Blueraay Player</b> Model BD-C6900, Incl. (4) Pairs of 3D Active Glasses & Remote
56	1	<b>Timber Veneer Office Desk</b> With Vinyl Insert Writing Pad, (2) Drawers & Retractable Shelf, 2130 x 900 x 730mm
57	1	<b>Acco Rexel Bin Top Paper Shredder</b> Model V-40
58	1	<b>Timber Laminate Office Desk/Conference Table</b> With Vinyl Top & Cut Off Corners, 2000 x 1160 x 740mm
59	2	<b>Dell Optiplex 780 Desktop Computers</b> 3Ghz Intel Core 2 Duo Processor, 4Gb of RAM, 160Gb HD, Note: Tower Only
60	1	<b>X-Box Video Game System</b> With Cords & Remote Control, (10) Games, Note: No Controllers
61	1	<b>Nintendo Wii</b> Model RVL-001, With (8) Games, Controllers, Sensor Wii Fit Pad
62	1	<b>Thermaltake Desktop Computer</b> Intel Core i5 Processor, 8Gb of RAM, 6T HD, Incl. Power Connection Cables, Keyboards, Mouse, Note: Power Issue
63	1	<b>Office Table</b> With Metal Legs & Vinyl Top, 1200 x 750 x 750mm
64	2	<b>HP 22" Computer Monitors</b> Model LE2201W
65	1	<b>Achilles Desktop Computer</b> 2.9Ghz Pentium Dual Core E 6500 Processor, 2Gb of RAM, 230Gb HD, Note: Tower Only
66	1	<b>Qty of (2) Office Chairs</b> Castors, Gas Lift, Fabric Cushion Seat & Back, One with Arm
67	1	<b>Dell Optiplex 780 USFF Desktop Computer</b> 4Gb of RAM, 160Gb HD, Mounted on a Dell 22" Monitor, Note: Power Supply Dead
68	1	<b>NEC Ultra Book on Word Laptop PC</b> Model LZ550JS, Has Zip Case, Note: No Cords
69	1	<b>Asus Laptop</b> Model R202CA, Has Zip Up Cover, Note: No Power Cables

LOT NO	QTY	DETAILS
70	1	<b>Apple Ipad</b> Model A1395, White in Colour, 32Gb, Note: Has Smashed Screen
71	1	<b>Cooler Master Lite Desktop Computer</b> 3Ghz Intel Core I5-2320 Processor, 8Gb of RAM, 1T HD, Note: Tower Only
72	1	<b>Gigabyte Chassis Desktop Computer</b> 3Ghz Intel Pentium G860 Processor, 4Gb of RAM, 500Gb HD, Note: Tower Only
73	1	<b>GBC Image Maker 2000 Ring Binder</b>
74	2	<b>Timber Veneer L Shaped Office Desk</b> With Vinyl Top & Hutch, 1500 x 2100 x 1210mm
75	1	<b>Qty of Assorted Office &amp; Electrical Items</b> incl. HDMI Cables, Ethernet Switches, Keyboards, Mice, Speakers, Power & Connection Cables, ADSL2 & Modem Router
76	1	<b>Cooler Master Desktop Computer</b> 3.2Ghz Intel Core I5-3470 Processor, 4Gb of RAM, 1T HD, Note: Tower Only
77	13	<b>HP 19" Computer Monitors</b> Model LE1901WM
78	1	<b>Two Toned Laminate Office Table</b> With Round Top, 1200 x 730mm
79	1	<b>Electronic Sudoku</b> By Nikoli Game
80	1	<b>Microsoft Office for Mac Home &amp; Business 2011 Bundle</b> Incl. Word, Power Point, Excell & Outlook, Brand New, Unopened
81	1	<b>Avision Duplex Document Scanner</b> Model AV8300
82	1	<b>Portable Dick Smith DVD Player</b> Model 6200, Note: No Cords
83	3	<b>Kensington Ipad 2 Covers</b>
84	1	<b>Glass &amp; Metal Student Desk</b> 1220 x 760 x 720mm
84.1	1	<b>Qty of Assorted Stationery Items</b> incl. Trays, Stamps, Note Books, Fold Back Clips
85	1	<b>Qty (4) Office Chairs</b> on Castors, Gas Lift, Fabric Seat & Back
86	1	<b>Fuji Xerox Document Centre 236 Multi Function</b> Model EKB-1
87	1	<b>Qty (3) Assorted UPS/Power Boards</b> incl. APC Back-Ups ES 550, Belkin 400VA
88	1	<b>Qty of (2) Grey Office Chairs</b> Cushion Seat & Back, Gas Lift & Castors



LOT NO	QTY	DETAILS
89	1	<b>Qty of (2) Netgear 10/100 MBPS Rack Mount Ethernet Switches</b> Incl. Model FSM7328S & FSM726S
89.1	122	<b>Assorted Movies</b> DVD's in Carry Case
90	1	<b>Lenovo Think Centre Desktop Computer</b> 2.6Ghz Intel Core 2 Duo Processor, 4Gb of RAM, 145Gb HD, Note: Tower Only
91	1	<b>Qty (2) Computers</b> Note: (1) Missing HDD, (1) with Power Issue
92	1	<b>Dell Vostro 460 Desktop Computer</b> 3.4Ghz Intel Core I7-2600 Processor, 4Gb of RAM, 500Gb HD, Note: Tower Only
93	1	<b>Teac Mini System</b> Model HMX900IP, Incl.(2) Speakers
94	1	<b>Qty of (2) Rackmount UPS</b> Incl. 48 VDC UPC, Model 2200RM12U, With 1980W Max. Power Rating & 30000H XR-INT
95	1	<b>Office Chair</b> on Castors, Gas Lift, Arms, Fabric Seat & Mesh Back
96	1	<b>Office Chair</b> on Castors, Gas Lift, Fabric Cushion Seat & Back
97	1	<b>HP Photosmart all in One</b> Model C4180
98	1	<b>D-link Rack Mount Gigabit Switch</b> Model DGS-1016T, With (16) Ports
99	2	<b>Timber Laminate Office Desks</b> Corner Mounted, Two Drawers, Single Door & Shelf, 2000 x 1700 x 730mm with Keys
100	1	<b>Dell Power Edge Rack Mount Server</b> Model 1950
101	1	<b>Qty of (10) HP Removable Power Supplies &amp; Fans</b>
101.1	1	<b>Qty of (2) Household Items</b> Incl. Sanyo Digital Dual Alarm Clock & Uniden Large Button Telephone, Model PF203
102	1	<b>Yamaha Compact CD Player</b> Model CDC-585, 5 Disc, With Remote Control & Manual
103	1	<b>Canon 1R2000 Photocopier</b> On Mobile Stand
104	1	<b>Defiance Safe Co Combination Filing Safe</b> With (4) Drawers, 530 x 680 x 1500mm, Incl. Keys, Note: Combination Unknown
105	1	<b>Brother Professional Series Multi Function Fax/Scan/Printer</b> Model MFC-J6510DW

LOT NO	QTY	DETAILS
105.1	1	<b>Qty of (2) Office Items</b> Incl. Epson XP-100 Print/Copy/Scanner & Waterville Document Folder
106	1	<b>Qty of (4) Assorted Whiteboards/Notice Boards</b>
107	1	<b>Grey Laminate Shelving Unit</b> With (5) Shelves, 910 x 340 x 1800mm
108	1	<b>Panasonic Blueray Disc Player</b> Model DMP-BDT320, With HDMI Cords & Cable Cord
109	1	<b>Qty of (34) Assorted Blu-Rays DVD's</b> Incl. Micromask, Pulp Fiction, War Ink, Great Expectations
110	1	<b>Qty of (27) Assorted DVD's</b> Incl. Metropolis, Logans Run, Trial & Retribution, Rising Damp & Walk the Line
111	20	<b>Assorted CD's</b> Incl. Eagles, Divine Madness, Irish Themes, Adam Garcia, Blockbusters
112	1	<b>HP Laser Jet Multi Function</b> Model M2727NF
113	1	<b>Timber Laminate Office Desk</b> 1800 x 740 x 730mm
113.1	1	<b>Qty of (3) Office Chairs</b> With Cushion Seat & Back With Gas Lift & Castors
114	1	<b>Brother Printer</b> Model MFC-J625DW, Fax/Scan/Copy/Photo/Wifi, Incl. Cord
115	1	<b>Canon Pixma Multi Function Printer &amp; Scanner</b> Model MG2160
116	1	<b>Brother Laser Printer</b> Model HL-2040
117	1	<b>Nintendo Wii Games Console</b> Model RVL-001 (AUS), Note: No Cords, Console Only
118	1	<b>Sony PSP</b> With Case, Note: No Charger
119	1	<b>Dymo Touch Screen Label Maker &amp; Printer</b> Model 500TS with Instruction Manual
120	1	<b>Dark Timber Laminate Office Table</b> With Round Top, 1000 x 760mm
120.1	1	<b>Black Vinyl Chair</b> With Metal Legs & Cushion Seat & Back
121	1	<b>Qty of (2) Childrens Items</b> Incl. Childs Timber Toy Box & Jar of Marbles
122	2	<b>Endevour Double Bed Ensembles</b> 1400 x 1900mm, Incl. (1) Lambs Wool Cover

LOT NO	QTY	DETAILS
123	1	<b>Rust Coloured King Size Bed Spread</b>
124	1	<b>Queen Size Intricate Bed Head</b> With Hand Painted Flowers & Artistic Mouldings 1550 x 1000mm
125	1	<b>Gold Metal Double Bed Head</b> 1300 x 1020mm
126	1	<b>Pine Single Bed</b> With Bedhead & Slat Base
127	60	<b>Laminex Student Desks</b> With Metal Legs, Square, 670 x 530 x 720mm
128	1	<b>Dunlop Ultra Fresh King Size Bed Ensemble</b> Incl. (2) Single Bases & (1) King Size Mattress
129	1	<b>Mahogany Queen Size Bed Head</b> 1550 x 1050mm
130	1	<b>Qty of Bedroom Items</b> Double Ultrasonic Micro Fibre Top Mattress Protector, (2) Alarm Clock & (2) Talking Lights, 1370 x 1900mm
131	1	<b>King Bed Ensemble</b> Incl. (2) Single Bases & (1) Sleepmaker King Mattress
132	2	<b>Bentwood Office Chairs</b> on Castors, Timber Seat & Back
133	4	<b>Herat Visco Floor Mats/Runners</b> 680 x 2010mm, Assorted Colours & Designs with Fringes
133.1	1	<b>Osteo Care Firm Support Queen Mattress</b> 1930 x 1560mm
134	1	<b>Green &amp; Olive Carpet Rug</b> 4780 x 4560mm
135	1	<b>Qty of Linen Fabric Curtain Pelmet</b> Curtain 3940 x 2560mm, pelmet 3940 x 400mm
136	1	<b>Timber Framed Photo's of Historical Places</b> Incl. The Louve & Paris, 50 x 110mm
137	1	<b>Timber Framed Print "Tulip Flower"</b> 100 x 600mm
137.1	2	<b>Timber Framed Signed Limited Edition Prints</b> By Ann Hawk, "Cooktown Orchid at Palm Cove at Twilight" & "Frangipani at Palm Cove in the Evening", 770 x 920mm
137.2	1	<b>Timber Framed Prints</b> Signed by Sam Fermo "Tropical Fish", 77 x 150mm
138	5	<b>Gold Ornate Framed Prints</b> With Step Down Border, "Flowers of Inspiration", 300 x 430mm

LOT NO	QTY	DETAILS
139	1	<b>Abstract Art on Canvas</b> 970 x 1700mm
140	1	<b>Canvas Wall Decor</b> Gold & Brown, 700 x 360mm
141	1	<b>Art Decor on Canvas</b> 600 x 1800mm
142	1	<b>Timber Framed Print "Rose Du Bengale"</b> Signed by PJ Redaute, 440 x 550mm
143	1	<b>Set of (2) Timber Black &amp; Gold Ornate Framed Prints</b> "Hare Hunting La Chase Au Livere" & "Fox Hunting 2nd La Chase Au Renard", 530 x 430mm
144	1	<b>Plaster Abstract Collage</b> 3600 x 600mm
145	1	<b>Qty of (2) Decorative Framed Prints</b> "At the Foot of Kirkston" & "The Church Pool at Be Hus", By Alfred De Breanski, 1852 to 1928
146	1	<b>Timber Reeds Room Partitions</b> (3) partitions, 1500 x 2000mm
147	1	<b>Three Piece Lounge Setting</b> With Blue Fabric Cushion Seat & Back, Incl. (2) Recliners & Three Seater Couch
148	1	<b>Three Seater Lounge Chair</b> With Fabric Cushion Seat, Arms & Back
149	3	<b>Beautiful Life Massage Stone Heaters</b> Model 18 Quart, Complete with Stones & Spa Pro Stone Heater
150	1	<b>Timber Coffee Table</b> 450 x 660 x 1255mm
151	1	<b>Small TV Stand</b> With (2) Shelves & Pivoting Top, 590 x 440 x 480mm
152	3	<b>Beauty Pro Wax Heater</b> Model SA-001
153	1	<b>Qty of (8) Assorted Books &amp; Novels</b> Incl. Twilight Series, Liar's Poker, Le Tour De France Memorabilia Book
154	2	<b>Bedside Cabinets</b> Off White, Mowen Meline with Brass Handles, (2) Doors & (2) Shelves
155	1	<b>Qty of (3) Household Items</b> Incl. Square Glass Plate, Pottery Statue & Jewellery Box
155.1	1	<b>Skyline Suitcase</b> Red & Blue, 570 x 400 x 230mm
156	1	<b>Qty of (3) Ornamental Items</b> Incl. Copper Vase, Tin Fish & Candle Stand

LOT NO	QTY	DETAILS
157	1	<b>Qty of (3) Timber Maori Ornaments</b> Incl. Maori House Money Box, Pepper Shaker & Totem
158	1	<b>Qty of (3) Balinese Timber Statues</b>
159	1	<b>Silver Lamp</b> With (3) Light Bulbs
160	1	<b>Timber Hallway unit</b> With (2) Doors, (4) Drawers & (5) Shelves, 1890 x 490 x 690mm
161	1	<b>Qty of (2) Timber Framed Pictures "Dogs"</b> 370 x 310mm & 90 x 400mm
162	1	<b>Timber Framed Glass Mirror</b>
163	1	<b>Qty of (3) Timber Framed Kitchen Prints</b> "Pear, Broccoli & Mushroom", 320 x 260mm & 280 x 280mm
164	1	<b>Qty of (7) Decorative Items</b> Incl. Crystal Asian Brass Letters, Glass Star & Dragon
165	4	<b>Timber Framed Prints "English Farms"</b> By Vincent Selby, 300 x 250mm
166	1	<b>Timber Bed Frame</b> With (6) Drawers, Inbuilt Bedside Tables, Header & Storage Space
167	1	<b>Qty of (2) Timber Ornamental Items</b> Incl. Thai Lady & Man Timber Statue & Ornamental Timber Wheel
168	2	<b>Timber Framed Prints "In the Mist"</b> By Rob Johnson
169	1	<b>Qty of (2) Timber Framed Prints</b> "Poultry Cross, Salisbury" By Louis Rayner, 1832 to 1924, "Near Bethways", By R.J. Hammond, 300 x 370mm
170	1	<b>Qty of (5) Personal Items</b> Incl. (2) Fans, Perfume Bottle, Glass Dish & Asian Style Oval Dish
171	1	<b>Qty of (5) Assorted Timber Framed Historical Prints of Cairns</b>
172	1	<b>Qty of Assorted Bric A Brac &amp; Household Items</b> Incl. Wine Stoppers, Baskets, Trays, Candle Holders
173	1	<b>Timber Pine 5 Drawer Tall Boy</b> 1090 x 490mm
174	1	<b>Qty of (4) Decorative Items</b> Incl. Vases, Baskets & Bamboo Vase
175	1	<b>Qty of Household Items</b> Incl. CD's, DVD's, Books, Table Decor, Mirror, Cane Baskets
176	1	<b>Qty of (3) Gold Decorative Framed Kitchen Prints</b> Incl. Virgin Olive Oil, Pineapple & Grilled Polanta, 340 x 260mm

LOT NO	QTY	DETAILS
177		<b>(9) Piece Nullabor Exclusive Collection of Timber Outdoor Setting</b> Incl. (8) Chairs with Timber Seat & High Backs & (1) Extendable Table, 1000 x 2000 x 750mm
178	1	<b>Volta Vacuum Cleaner</b> Model SIGNUM, 2000W, Turbo U4013
179	1	<b>Piranha Steam Cleaner</b> Model Cs-160H
180	1	<b>Ergonomic Office Chair</b> On Castors With Fabric Cushion Seat
181	1	<b>Childs Rocking Horse</b>
182	1	<b>Meike Portable Electric Organ</b> Model MK931, With Power Cord, 61 Key
183	1	<b>Timber Oblong Coffee Table</b> With Undershelf Note: No Glass, 1170 x 600 x 550mm
184	3	<b>Timber Turned Leg Stools</b> With Fabric Cushion Seats
185	1	<b>Timber Framed Photograph</b> Artwork by Elizabeth Poole, "Figurines on the Lake", 97 x 80mm
186	1	<b>Brown velour Sofa/Sofa Bed</b>
187	1	<b>Leather Two Seater Sofa</b> with Leather Cushion Seat, Arms & Back
188	1	<b>Brown Velour Modular Lounge Suite</b> Incl. (2) Seater & Slave Lounge, Note: Cushion Missing
189	2	<b>Dark Stained Cane Bedside Tables</b> With (1) Pullout Drawer & (1) Under shelf, 550 x 450 x 400mm
190	1	<b>Qty of (9) Assorted Decorative Items</b> Incl. Scorpion Ash Tray, Square Ash Tray, Ornamental, Items & Historical Scotland Coins
191	1	<b>Qty of (2) Bedside Pine Tables</b> (3) Drawer
192	1	<b>Tall Glass Cylinder Vase</b> 300mm
193	1	<b>Qty of (5) Timber Framed Prints of Historical Prints of Cairns</b> Incl. Abbott & Shields Street, Jenson's Motor Service Port Douglas, Kuranda Railway
194	2	<b>Table Lamps</b> With Glass Shade
195	1	<b>Table Lamp</b> Acrylic/Chrome with a Fabric Square Shade, 710 x 380mm

---

LOT NO	QTY	DETAILS
196	1	<b>Timber Entertainment Unit</b> With (4) Doors & (2) Shelves, 1450 x 550mm, With Metal Handles
197	1	<b>Qty of (6) Cushions</b> Checkedered, Purple, Green & Orange
198	1	<b>Slay Timber Style Patio Chair</b> With Canvas Seat & Back
199	1	<b>Qty of (10) Jane Iredale Assorted Colours Eye Shadow</b>
200	2	<b>Jane Iredale So-Bronze Bronzing Powder</b> Colour 1, 9.9Gms
201	4	<b>Jane Iredale Dream Tint</b> Moisture Tint, Colour Medium, 59mls
202	2	<b>Medic8 Eye Lift Serum</b>
203	1	<b>Qty of (3) Medik8</b> Incl. Filler, Pretox 20 & Pretox Pout
204	11	<b>Jane Iredale Pure Moist Lipsticks</b> Assorted Colours
205	4	<b>Giant Airgyle Longest Lash Mascara 12gms</b> Assorted Colours
206	1	<b>Qty of (5) items</b> incl. Assorted Colour Pencil Crayons & Eye Liner Pencils
207	1	<b>Jane Iredale Pure Pressed Blush</b> Colour Copper Wind, Bronzer, Cotton Candy, 2.8Gms
208	2	<b>Jane Iredale Absence Oil Control Primer</b> Colour No. 2
209	4	<b>Jane Iredale Circle Delete Concealer</b> Colour No. 1, (2) No. 2 & No. 3
210	1	<b>Qty of Jane Iredale Lip Balm</b>
211	1	<b>Make Up Trolley</b> With Undershelf & Drawer, 600 x 930 x 620mm
212	1	<b>Qty of Assorted Beauty Products</b> Incl. (1) Set of Heat Stones, Cane Basket Tray
213	1	<b>Skin Care Magnifying Lamps</b> Model 205/206, Metal Frames & Castors
214	1	<b>Qty of Assorted Beauty Salon Items</b> Incl. Cane Tray, (10) Circular Cane Stands & (10) Half Coconut Bowls & Bath Pebbles
215	1	<b>Hot Cabi Heating Cabinets</b> Model 207 (Hot Cabinets)

---

LOT NO	QTY	DETAILS
216	1	<b>G2 Cordless Swivel Sweeper</b> Incl. Charger & Instructions
217	1	<b>Qty of (2) Household Items</b> Incl. Set of Port Glasses with Round Dome Stands & Pair of Ornamental Statues
218	1	<b>Qty of (8) Household Items</b> Incl. (6) Glass Oval Dishes & (2) Silver Like Goblets
219	1	<b>Shark Navigator Lift Away Upright Vacuum Cleaner</b> Model MV350NZ 26, incl. Attachments
220	1	<b>Aqua Beauty Salon Stools</b> With Cushion Seat & Back, Gas Lift & Castors
221	1	<b>Timber Framed Indian Chief Picture</b> 490 x 400mm
222	1	<b>Qty of (5) Assorted Vases</b> Brown & Gold in Colour & Brown & White
223	2	<b>Coffee Tables</b> With Glass Top & Metal Base
224	1	<b>Woven Cane Room Divider</b> (3) Partitions, 1200 x 1700mm
225	1	<b>Timber Bedside Table</b> With Drawer & Curved Legs, 600 x 340 x 650mm
226	1	<b>Qty of (2) Lighting Items</b> Incl. Chrome & Glass Table Lamp & Battery Operated LED Lamp
227	2	<b>Leather Recliner Chairs</b>
228	1	<b>Monmart 340 Studio Cotton Duck Canvas Block</b> 600 x 750mm
229	4	<b>Ornate Gold Timber Framed Paintings</b> With a Step Down Figurley Border "Infinity Flowers", 460 x 460mm
230	1	<b>Timber Framed Oil Painting "Creature of the Dark"</b> Signed by Mooky, 54 x 80mm
231	1	<b>Qty of (2) Prints on Canvas</b> Incl. James Dean & "The Red Bike", 400 x 500mm & 340 x 350mm
232	1	<b>Metal Base Desk Lamp</b> With Glass Shade
233	1	<b>Qty of (3) Cone Shaped Mosaic Vases</b>
234	1	<b>Figurine Cherub Lamp Base</b> Note: No Shade
234.1	1	<b>Qty of (3) Items</b> Incl. (2) Enamel Advertising Signs & Cash Box With Keys



LOT NO	QTY	DETAILS
235	16	Thalgo Gel Biodepyl 50ml
236	1	Thalgo Sublime Cream Relaxing, Regenerating, 200ml
237	4	Thalgo Firming Gel Masks
238	8	Jane Iredale Amazing Base Lose Mineral Powder 10.5Gms, Colours, Golden Glow, Satin, Natural Light Beige, Late Bisque & Amber
239	4	Medik8 Pretox 20 Muscle Relaxing Peptide Gel 30mls
240	4	Thalgo Brightening Regulating Essence 30mls
241	7	Haltgo Brodepyl Concentrate (Post Epilation) 50mls
242	1	Qty of (2) Beauty Items Incl. Exfoliator & Bath Pebels
243	1	Timber Dining Room Table 1700 x 1000mm
244	1	Qty of (2) Vases
245	1	Square Quartz Wall Clock 300 x 300mm
246	1	Qty of (3) Timber Household Items Incl. Round Fruit Bowl, Oval Shape Fruit Bowl with Etchings & Gold Pine Cone
247	2	Timber Chest With Lids, 900 x 450 x 450mm
248	1	Qty of (5) Paper Embossed Art 55 x 75mm
249	1	Outdoor Pot Plant Table
250	1	Ungrey Suitcase All Directional Wheels, Zip, 75 x 50mm
251	2	Dining Chairs With Black Vinyl Seat & Back & Metal Legs
252	2	Funi Dining Chairs With Black Vinyl Seat & Back & Metal Frame
253	1	Mirrored Sideboard (3) Soft Touch Doors & (2) Shelves, 400 x 1000 x 1800mm
254	1	Summer Days Yellow & Red & Green Vase 250mm
255	5	Gold Decorative Framed Prints "Desert Flowers" By Songee, 360 x 360mm

LOT NO	QTY	DETAILS
256	2	<b>Green Ceramic &amp; Wood Base Table Lamps</b> With Cream Lamp Shade, 540mm
257	1	<b>White Lamp</b> Mosaic Look, Fabric Shade
258	1	<b>Qty of (2) Mosaic Tiled Round Vases</b>
259	1	<b>Qty of (3) Silver Pewter Items</b> Incl. (2) Goblets & Miniature Jug/Vase
260	1	<b>Qty of (12) Assorted Household Items</b> incl. (5) Miniature Bottles, (2) Tea Cups & Stand & Bar Coasters
261	1	<b>Qty of (8) Assorted Ornamental Items</b> Incl. Weaved Metal Box, Ceramic Shell, Assorted Statues
262	1	<b>Wrought Iron Timber Top</b> Diamond Table
263	2	<b>Diamond Creek Timber Dining Chairs</b>
264	1	<b>Cane Outdoor Chair</b> With Loose Cushion Seat & Back
265	1	<b>Velbon Telescopic Stand</b> Model CX460
266	1	<b>Qty of (2) Ornamental Plants</b> Incl. Blackboy Plant, Umbrella Pom Pom Plant & Green & Red Tree Plant
267	1	<b>Cane Tub Chair</b> With Cushion Seat
268	12	<b>Timber Farmhouse Style Chairs</b> With Timber Seat & Timber Back
269	1	<b>Qty of (5) Jonelle Pistachio Fabrics</b> Incl. Green & Pink, Assorted Sizes
270	3	<b>White Aluminium Patio Chairs</b>
271	1	<b>Timber Framed Oil Painting on Canvas</b> "Rainforest", 1070 x 750mm
272	1	<b>Timber &amp; Gold Framed Print "Stag in Autumn"</b> Signed by Coulson, 840 x 590mm
273	2	<b>Gold Ornate Framed Wall Mirrors</b> 640 x 840mm
274	1	<b>Qty of Artificial Flowers in Planters</b> Incl. Ceramic & Metal
275	1	<b>Timber Queen Ann Style Hallway Table</b> With Hand Painted Floral Top with Glass Top, 400 x 700 x 1200mm
276	2	<b>Cane &amp; Wrought Iron Mirrors</b>

LOT NO	QTY	DETAILS
276.1	1	<b>Cane &amp; Wrought Iron Mirror Frame</b> Note: No Mirror
277	3	<b>(3) Piece Settings</b> Incl. Round Wrought Iron & Cane Table with Glass Top & (2) Chairs
278	1	<b>Sedac Meral (2) Seater White Sofa Bed</b> With Cushion Seat & Back in a Diamond Pattern Fabric with Zip Off Covers
279	1	<b>Qty of (4) Household Items</b> Incl. (3) Cookbooks, Cane Basket Floral Arrangement & Novels
280	3	<b>Wrought Iron &amp; Cane 2 Tier Stands</b> With Glass Top Shelf
281	1	<b>Qty of (2) Purple/Burgundy Cushions</b>
282	1	<b>Mahogany Stool</b> With Scalloped Cushion Top, Green & Gold, 440 x 340mm
283	1	<b>Set of (2) Wrought Iron &amp; Tile Pot Plant Stands</b> Mosaic Like Tile, Pot Plant Stands, 540mm
284	1	<b>Silver Candle Arbour</b> With (4) Prongs, Swinging Bars
285	1	<b>Pine Timber Toolbox/Blanket/Toy Box</b> 360 x 800 x 400mm
286	1	<b>Akai 10" Digital Frame</b> Model ADPF10XDV, Recommended Retail Price \$115, Incl. Cord
287	1	<b>Pine Timber Blanket Box</b> 490 x 800 x 440mm
288	5	<b>Three Drawer pine Bedside Tables</b> 430 x 600mm
289	1	<b>Timber Stackable Wine Unit</b> Holds (27) Bottles of Wine
290	2	<b>Gold Coloured Metal Base Table Lamps</b> With Fabric Shades, 560mm
291	1	<b>Qty of (2) Decorative Items</b> Incl. Home Rustica Yellow Ceramic Jug & Small Ceramic White Vase with Flowers
292	2	<b>Twin Pedestal Pine Dressing Tables</b> With (6) Drawers & (3) Detachable Mirrors, 1350 x 480mm, Base 760mm, Detachable Mirror 600mm
293	1	<b>Qty of (2) Lamps</b> Incl. Freestanding Lamp & Desktop Fabric Shade Lamp
294	1	<b>Timber Framed Gold Bevilled Wall Mirror</b> 1000 x 400mm

LOT NO	QTY	DETAILS
295	1	<b>Gold Timber Framed Bevelled Wall Mirror</b> 680 x 960mm
296	2	<b>Artificial Orchard Plants</b> Yellow & Purple in Pots
297	1	<b>Cylinder Shaped Asian Vase</b> White & Gold with Flowers
298	1	<b>(3) Piece Mahogany &amp; Cane Patio Setting</b> Incl. Round Table with Glass Top & (2) Tub Chairs with Cushion Seat & Cane Backs
299	1	<b>Qty of (3) Gold Ornate Framed Prints</b> "English Farms", 180 x 140mm
300	2	<b>Mahogany Bedside Chest</b> With (3) Drawers & Gold Ring Handles, 820 x 700 x 460mm
301	1	<b>Mahogany Side Board/Dining</b> (4) Doors, (3) Drawers, 1530 x 420 x 890mm
302	1	<b>Qty of (2) Alabaster Items</b> Incl. Spynx & Vase
303	1	<b>Antique Style Table Lamp</b> With Ornate Metal Base & Glass Shade
304	1	<b>Mahogany Entrance Stand</b> Extra Large Coat Extra Large Coat Hooks on Each Side, Mirror & Drawers, 2300 x 1400mm
305	1	<b>Pilkington Mirror</b> Model CODOEA Black, Batch No. 220897, Glass Thickness is 4mm, Gold & Black Gilt Frame with Floral Edgings, 760 x 1070mm
306	2	<b>Table Lamps</b> With a Timber & Ceramic Base, Fabric Shade, Gold, Cream & Yellow
307	1	<b>Mahogany Book Case</b> With (2) Shelves, 760 x 770 x 300mm
308	1	<b>Mahogany Towel Rack</b> (5) Racks, 780 x 1000mm, Has Turned Legs
309	1	<b>Qty of (2) Items</b> Incl. Mahogany Stand & Bulb Style Ceramic Cream Vase, 140mm
310	1	<b>Mahogany Morris Mirror</b> Oval Shape, 560 x 360mm
311	2	<b>Mahogany &amp; Glass Square Side Lamp Tables</b> Note: Glass Inserts, 600 x 600 x 500mm
312	6	<b>Shiraz 100% Visco Rugs</b> 680 x 1005mm, All with Floral Designs
313	1	<b>Round Asian Style Green White &amp; Gold Ceramic Planter</b> 350 x 300mm

LOT NO	QTY	DETAILS
314	1	<b>Round Asian Style Green White &amp; Gold Ceramic Planter</b> 420mm
315	1	<b>Round Mahogany Outdoor Table</b> With Pedestal Legs
316	1	<b>Gold &amp; Black Ornate Timber Framed</b> With a Step Down Gold Figurley Border "Dogs World" 450 x 400mm
317	1	<b>Ceramic Pink Pedestal</b> With Twist Patten, 600mm
318	2	<b>Intricate Balinese Lamp Tables</b> With Glass Tops, 470 x 400mm
319	1	<b>Qty of (3) Laundry Items</b> Incl. Round Cane Basket, Square Cane Basket with Lid & Floral Arrangements
320	1	<b>Timber Carved Ornate Asian Chest</b> With Glass Top, 530 x 600 x 1000mm
321	2	<b>Purple Glass Bottle Shaped Vases</b> 500mm
322	1	<b>(7) Piece Cup &amp; Saucer Set</b> Barratts Staffordshire Ware
323	1	<b>Mahogany TV Entertainment Unit</b> With (2) Glass Doors & (3) Shelves, 1130 x 700 x 400mm
324	1	<b>Mahogany Dressing Table</b> With Mirror, (6) Drawers, Turned Legs, With Gold Handles & Knobs, 1060 x 1780 x 440mm
325	1	<b>Metal Leaf Base Lamp</b> With (3) Flower Blooms
326	1	<b>Ornate Gold &amp; Black Oil on Canvas</b> "A. Lane at Knockhalt Kent" by Henry Boddington
327	1	<b>Pilkington Mirror</b> Model CORDOBA, Black, 4mm Thickness, Timber Framed with Black & Gold Gilt, with Floral Edging, 1100 x 1400mm
328	1	<b>Mahogany Twin Pedestal Dressing Table</b> With (6) Drawers, (3) Mirrors, Main Mirror & (2) Side Mirrors
329	1	<b>Copper &amp; Glass Table Lamp</b> With (3) Tulip Bulbs
330	1	<b>Round Mahogany Side Lamp Table</b> With Pedestal Legs, 500 x 600mm
331	1	<b>Mahogany Corner Rack</b> 4 Tier, With Leather Insert
332	1	<b>Mahogany Square Blanket box</b> 970 x 480 x 570mm, With Lift Up Lid

LOT NO	QTY	DETAILS
333	1	<b>Qty of (3) Household Items</b> Incl. Mahogany Decor Stand with Glass Vase & Floral Arrangement
334	1	<b>(27) Piece English EIT Dinner Set</b> Incl. (4) Cupos, (6) Saucers, (7) Butter Plates, (6) Dinner Plates, With Blue & White Asian Pattern
335	1	<b>Five Piece Dining Setting</b> Incl. Mahogany & Cane Table with Glass Top & (4) High Back Cane Chairs with Cushion Seat & Mahogany Legs
336	1	<b>(11) Piece Mahogany Outdoor Table with Lazy Susan</b> Incl. Table & (10) Chairs with High Back, Armrests & Cushions, Maroon, Brown & Cream Striped Cushions, 2580 x 1190mm
337	1	<b>Mahogany Wall Shelf &amp; Mahogany Brackets</b> 90 x 1200mm
338	3	<b>Purple Pumpkin Shaped Vases</b>
339	1	<b>Mahogany Full Length Mirror Unit</b> With (1) Drawer, 1650 x 430mm
340	1	<b>Mosaic Crystal Brandy Balloon</b>
341	1	<b>Mahogany Free Standing Serving Trolley/Tray</b> Note: No Wheels, 430 x 680 x 760mm
342	1	<b>Aria Steel Guitar</b>
343	2	<b>Gold Timber Framed Wall Mirrors</b> 700 x 900mm
344	1	<b>Qty of (2) Framed Harley Davidson Memorabilia</b> Various Sizes
345	1	<b>Jameson Irish Whiskey Dublin Framed Mirror</b> 500 x 400mm
346	1	<b>Qty of (2) Timber Framed Wanted Posters</b> 270 x 320mm
347	1	<b>Timber Framed Mirror</b> 440 x 230mm
348	1	<b>Qty of (3) Books</b> Incl. The Little Book of Fast Cars, Million Dollar Classics & Ferrari's
349	1	<b>DVB Sunglasses &amp; Case</b>
350	1	<b>Mobile Stainless Steel Top Draft Beer Bar</b> With Aluminium Checker Plate Sides, Incl. (1) Draft Beer Font with (2) Taps, Kirby Refrigeration & Glycol System, to Suit (2) Kegs, 2400 x 800 x 1000mm
351	1	<b>Didgeridoo</b>

LOT NO	QTY	DETAILS
352	1	<b>(3) Piece Outdoor Metal &amp; Glass Patio Setting</b> Incl. Square Glass Table & (2) Mesh Chairs & Hole For Umbrella, Note: No Umbrella, 920 x 920 x 710mm
353	1	<b>Qty of (2) Bike Items</b> Incl. Harley Leather Belt & Buckles & 2004 Harley Owners Manual
354	1	<b>Aluminium &amp; Glass Round Outdoor Patio Table</b> 550mm
355	1	<b>Dimplex Imitation Log Fire Heater</b> Model RIT20
356	1	<b>Black open Face Helmet</b> Note: No Visor
357	1	<b>RJ's Motor Bike Helmet in Pink &amp; Black</b> With Built in Sunglasses
358	3	<b>Assorted Motor Bike Helmets</b> Incl. HJC & Cirus with Vises
359	1	<b>Pair of Gaerne Motor Cycle Boots</b> Leather & Synthetic Upper, Leather Inner Sole & Rubber Sole, Size 44
360	1	<b>Pair of Falco Leather Motor Bike Mid Calf Boots</b> Size 43
361	1	<b>Pair of BMW Imola Davos Motor Cycle Boots</b> Size 41
362	5	<b>Sets of Assorted Leather Motor Bike Gloves</b> Incl. Harley Davidson, Shift, 2 x Small & X Large
363	3	<b>Dryrider Dry Mesh Motor Bike Jackets</b> With Armour, Assorted Sizes, Pressed Stud Fronts, Incl. Waterproof Inner Linings
364	2	<b>Genuine Cow Hide Leather Jacket</b> Zip Front, Zip Pockets & Belt, Size 44
365	1	<b>Harley Davidson Leather Vest</b> Large, Incl. (31) Assorted Harley Badges, Pressed Stud Clothes
366	1	<b>Timber Framed Sydney Prints</b> Incl. Argyle Place, Opera House, Circular Key & The Rocks, Signed 400/1000, 60 x 50mm
367	2	<b>Framed Sydney Photographs</b> Incl. Bond Street Junction & Church Street Parramatta New South Whales, 410 x 370mm
368	1	<b>9ct Gold Ladies Dress Ring</b> With (3) Citrine Stones
369	1	<b>Sterling Silver Ladies Dress Ring</b> With Ruby & CZ

LOT NO	QTY	DETAILS
370	1	<b>Sterling Silver Ladies Dress Ring</b> With Amethyst & Zirconia Cluster
371	1	<b>Silver Ring With Blue Topaz Stone</b>
372	1	<b>Sterling Silver &amp; Blue Sapphire Dress Ring</b>
373	1	<b>Sterling Silver Ring</b> With Pink Gem Stone
374	1	<b>Sterling Silver Oval Blue Sapphire Dress Ring</b>
375	1	<b>Gents Stainless Steel Ring</b> With Gold Tones
376	1	<b>Sterling Silver Peridot Ring</b>
377	1	<b>Sterling Silver Ring</b> With Lapis Lazuli Gem Stone
378	1	<b>Silver Dress Ring</b> With a Triangle Shape Sapphire
379	1	<b>Sterling Silver &amp; Blue Square Sapphire Ring</b>
380	1	<b>Sterling Silver Zirconia Dress Ring</b>
381	1	<b>Black Tricklet Opal Pendant</b> Silver Chain, Certificate of Authenticity
382	1	<b>Pair of Drop Purple &amp; White Earrings</b>
383	1	<b>Silver Chain</b> With Silver Egyptian Pendant
384	1	<b>Silver Chain with Silver Heart Pendant</b>
384.1	1	<b>Ladies Seco Quartz Watch</b> With Black & Gold Coloured Face, With Numeral Numbers & Bracelet Band
385		<b>Vacant Lot</b>
386	1	<b>Rip Curl Watch</b> Leather Band, Square Face
387	1	<b>Mens Watch &amp; Bracelet Set</b>
388	1	<b>Gucci Quartz Ladies Silver Coloured Watch</b> With Amber & Black Face & Metal Band
389	1	<b>Kedie Black Face Ladies Watch</b> With Metal Black Band
390	1	<b>Silver DKNY Ladies Watch</b>
391	1	<b>Gold Seiko Watch</b>
392	1	<b>US Polo Assn Menes Stainless Steel Quartz Watch</b>



LOT NO	QTY	DETAILS
393	1	<b>Pierre Cardin Ladies Gold Coloured Watch</b> With Bracelet Band
394	1	<b>Genera ladies Watch</b> With Snap on Metal Band
395	1	<b>Stainless Steel Jag Watch</b> 50M Water Resistant, Metal Band
396	1	<b>Pair of Sterling Silver Clip On Earrings</b>
397	1	<b>Gold Michael Hill Watch</b> Roman Numerals & Date
398	1	<b>Rose Gold Plated Chain</b> With Amethyst Pendant
399	1	<b>9ct Gold Mens Ring</b> Small Diamond & Black Anex
400	1	<b>Gold Layered Bracelet</b> With Ruby Coloured Zirconnia
401	1	<b>Childrens Pandora Like Bracelet</b> With 5 Charms
402	1	<b>Rhinestone Pink &amp; White Bracelet</b>
403	1	<b>Pair of Drop Crystal Earrings</b>
404	3	<b>Assorted Rhinestone Costume Necklaces</b> Note: (1) Broken Clasp
405	1	<b>Bella &amp; Rose Gift Pack</b> Incl. Gents Watch, Pen & Leather Card Holder
406	1	<b>Qty of Assorted Foreign Coins &amp; Notes</b>
407	1	<b>Square Tin &amp; Contents of Assorted Coins</b> Incl. Eureka Stockade 2004 \$1 Uncirculated Coin, 1946 Thruppence Silver 2.1Gms, Copper Coins & 1944 Thruppence
408	1	<b>Huawei Mobile Phone</b> Model Y300-0151, 5mpx Camera, 4Gb, With Charger
409	2	<b>Apple Ipod 8Gb</b>
410	1	<b>Ricoh Caplio R2 Digital Camera</b> With 5mpx, 4.8x Wide Zoom Lens & Digital Screen & Carry Case
411	1	<b>Camera Caplio R3</b> 7.1 Optical Wide Zoom Lens, 5mpx, With Charger
412	1	<b>Canon Power Shot Digital Camera</b> Model A470, With 3.4 Optical Zoom, 7.1mpx, Digital Screen
413	1	<b>Canon Digital Camera</b> Model IXUS9015, With 10mpx & Digital Screen, Zoom Lens 3x3x15, Image Stabiliser

LOT NO	QTY	DETAILS
414	1	<b>Canon Digital Camera</b> Model IXUS 85015, With 7.1mpx, Zoom Lens, 3.8x 15, Digital Screen
415	1	<b>Apple Ipod Touch 16Gb</b> Model 1421, Blue
416	3	<b>Iphone 4's</b> Model A1387, 2 x White & 1 x Black, Note: 1 White Has Cracks on Back
417	2	<b>Apple Ipod 32Gb</b>
418	3	<b>Apple Iphone 4's</b> Model A1332, 5mpx Camera, Black Screens
419	1	<b>Nokia Mobile Phone</b> Model 6101, Flip, With Charger
420	1	<b>HTC Mobile Phone</b> With Charger
421	1	<b>Qty of (4) Assorted Nokia Phones</b> Various Styles & Models, Note: No Chargers
422	1	<b>Amazon Kindle</b> Model D00901, Black Leather Case, Note: No Cords
423	1	<b>Samsung Tablet</b> Model GT-P3110, 8Gb, White in Colour, Note: No Cords
424	1	<b>Nook Electronic Book</b> In Brown Leather Case, Note: No Cords
425	1	<b>Apple Ipad Mini</b> 32Gb, Black, Note: No Cords
426	1	<b>Amazon Kindle</b> Model DO1200, Black Leather Case, Note: No Cords
427	1	<b>Sharpe Word Converter</b> Model PW-A700, In Black Case, Note: No Cords
428	1	<b>Casio Ex-Word Pink XD-A6200 Converter</b> Note: No Cords
429	1	<b>Qty of (2) HTC Mobile Phones</b>
430	2	<b>HTL Design 300 Smart Phones</b> With 5mpx Camera, 4Gb, 512Mb RAM, Note: No Cords
431	1	<b>Qty of (4) LG mobile Phones</b> Various Models, 1p350, 3mpx Camera, E425, E400 & GD350 Flip Phone, With 2mpx Camera
432	1	<b>Bauhn Mobile Phone</b> Model ASP-500H, 8mpx Camera, High Definition, Note: No Charger

LOT NO	QTY	DETAILS
433	1	<b>Olympus Pen Mini Camera</b> Model E-PM214, 16mpx, Wide Format, Touch Screen, LCD, 14-42mm Lens, Flash & Blue Carry Case
434	1	<b>Tom Tom Excel 250 Navigation Device</b> With Charger
435	1	<b>Gold Ornate Timber Framed Oil Painting on Canvas</b> "Good Friends", 390 x 330mm
436	1	<b>Timber Framed Memorabilia "Wings on their Heels"</b> Australian Sprint Champions of the 50's, Incl. Betty Cuthbert, Marjorie Jackson, Shirley Strickland, Photos & Memorabilia Information, 950 x 650mm
437	1	<b>Stone Asian Wall Plaque</b> 60 x 60mm
438	1	<b>Vintage Wind Up Clock</b> With Key, 580mm
439	1	<b>Timber Slabbed Mirror (Sour Hard Wood)</b> 1150 x 300mm
440	1	<b>Cane Mirror</b> 1000 x 460mm
441	1	<b>Timber Framed Memorabilia</b> 100 Greatest Players with Certificate of Authenticity Limited Edition Print 389/2008, Players from 1908-2008, 106 x 75mm
442	1	<b>Framed Racing Legends Collection</b> 1969 Allan Moffett Mustang, Art by James Bailey, 580 x 460mm
443	1	<b>Timber Framed NRL Sydney Roosters Jersey</b> Signed 80 x 1008mm
444	1	<b>Timber Framed Memorabilia Print</b> 2009 NRL Premiers "Stunning Storm", 50 x 70mm
445	1	<b>Mahalo Ukulele</b> With Case
446	1	<b>Valenci Guitar</b> In Bag & Stand
447	1	<b>Fulltone OCD (Obsessive Compulsive Drive) Guitar Foot Pedal</b> 9VDC to 18VDC
448	1	<b>Qty of (2) Apple Ipods</b> Assorted Styles, 16Gb
449	2	<b>Apple Ipod 4Gb</b> Note: No Cords
450	1	<b>Fuji Film Digital Camera</b> Model JX200, Red, Digital Screen, 12mpx, 5x Zoom Lens

LOT NO	QTY	DETAILS
451	1	<b>Cannon Power Shot Digital Camera</b> Model S3630LEPH, 6mpx, Zoom Lens of 3x, Digital Screen
452	1	<b>Farn Genuine Leather Purse/Wallet</b>
453	1	<b>Celestron Power Seeker 60AZ Telescope</b> Model 21041, incl. Box of Accessories
454	1	<b>Timber Framed Memorabilia Picture of Wally Lewis</b> Signed, 35 x 43mm
455	9	<b>American Chopper Series Diecast Choppers</b> 1.18 Scale, Incl. Jet Bike, T-Rex Soft Tale, Pow-Mia Chopper, Black Widow Sun Burst, Old School Codie Project & Paul SR Custom Ridged
456	2	<b>Diecast Hot Wheels Collectables</b> Incl. Enzo Ferrari Yellow in Colour With Lift Up Boot & Doors & Ferrari F40 Red, Lift up Engine Bonnet & Doors
457	1	<b>Diecast Replica of Mazda RX8</b> 1/18, bonnet & Boot Opens
458	2	<b>Hot Wheels 360 Modena Ferraris Diecast Replicas</b> Assorted Styles, Red in Colour
459	1	<b>Qty of (2) Memorabilia's</b> Incl. (3) DVD's of American Chopper Series & Power Racer Diecast Collectables
460	1	<b>Qty of (3) Hardware Items</b> Incl. Set of Letter Punch 6mm A-Z, Set of Numbers 6mm 1-10, Harley Davidson Leather Wallet
461	2	<b>Harley Davidson Details Scale Replica Diecast</b> Soft Tale Deuce & Dyna Super Glids Sports Motor Bikes, Recommended Retail \$59.90
462	1	<b>Diecast Replica Harley Davidson 2004 HDV Rod</b>
463	3	<b>Harley Davidson Cycles American Legend Series Diecast Motor Cycles</b> Incl. 2002 Heritage Soft Tale, VRSGA V.Rod & Road King Classic, Recommended Retail \$19.90
464	1	<b>Metal Art Decor Harley</b> Made from Bolts & Metal
465	3	<b>Assorted Footballs</b> (1) Signed Melbourne Storms & (1) Classic Trainer Steeden & Spalding League
466		<b>Vacant Lot</b>
467		<b>Vacant Lot</b>
468	1	<b>Brass Led Compass</b> With Waltzing Matilda Song Inscribed Inside
469	2	<b>Swiss Army Pocket Knives</b>

LOT NO	QTY	DETAILS
470	1	<b>Stanley Spoke Shave Hand Planners</b> Made in England, No. 151 & Gothic No. 534 Cast Steel
471	1	<b>Browning Stainless Steel Knife</b>
472	1	<b>Victorian Government Department Saw Set</b> Used for Setting Teeth on a Large Cross Cut Saw
473	1	<b>Nautican Canon Camera Housing</b> Model NA600D, Complete with Carry Case & Hand Strap, Waterproof
474	1	<b>Canon Camera EOS600D</b> Complete with Extension Ring with Lock, 4.33 Acrylic Dome Port, TX1017-Z Tonka AT-X Fisheye & Canon EFS-F5-5.6 Fisheye, Purchase Value \$1,560
475	1	<b>Go-Pro Hero 3 Camera</b> Incl. Cords, Stand & Accessories, Purchase Value \$422.73
475.1	1	<b>Timber Framed Cricket Bat</b> Queensland Bulls from Queensland Squad 1999-2000 Signed 27 x 1005mm
476	2	<b>Green Glazed Pottery Buddha Heads</b>
477	1	<b>Timber Pedestal World Globe</b>
478	2	<b>Ceramic Chinese Emperors</b>
479	2	<b>Brass Chinese Symbols</b>
480	1	<b>Stone Dragon Statue</b>
481	2	<b>Ceramic Chinese Lion Dog Dragons</b> Port Wine in Colour
482	1	<b>Replica Wakizashi</b>
483	1	<b>Abstract Pottery Decor Vase</b>
484	1	<b>Qty of (3) Vases</b> Incl. Amber Glass Vase, Blue Brown & Yellow Pottery Vase & Green vase
485	1	<b>Qty (2) Flower Arrangements</b> incl. Assorted Vase Base
486	1	<b>Brass &amp; Crystal Table Lamp</b> With Ram Heads & Cream Fabric Shade, 740mm
487	3	<b>Patch &amp; Striped Ishka Photo Frames</b> 230 x 280mm, (5 x 7"), Recommended Retail \$32.95
488	1	<b>Cherub Water Feature</b>
489	1	<b>Modern Living Rotating Ferris Wheel Picture Frame</b> Holds (12), 7.5 x 5cm Photos
490	1	<b>Royal Selangor Timber Salad Bowl</b> With Metal Base & Utensils

LOT NO	QTY	DETAILS
491	1	<b>Ceramic Decorative Bowl</b> With (6) Apples All Attached
492	1	<b>Qty of (2) Ornamental Items</b> Carved Owl on a Horse & Carved Elephant
493	1	<b>Set of Avery Birmingham Vintage Scales</b>
494	1	<b>Qty of (2) Ornamental Items</b> Incl. Dunk Island Butterfly in Glass Dome & Glass Ship in a Bottle
495	1	<b>Qty of (2) Decor Items</b> Incl. Oval Shape Blue Tan & White Vase & Marble Look Egyptian Candle Holder
496	1	<b>Crystal Glass Cut Spirit Decanter</b>
497	1	<b>Qty (5) Egyptian Home Decor Items</b> incl. Perfume Bottles & Lantern
498	1	<b>Qty of (5) Led Crystal Items</b> Incl. Ring Holders, Perfume Bottles, Jewellery Box
499	1	<b>Qty of (2) Timber Items</b> Incl. Timber Box With Gold Plated Pen & Timber Fox Letter Opener
500	1	<b>Oval Shape Food Platter</b> Made by J & G Meakin England
501	1	<b>Set of (4) Crystal Candle Holders</b>
502	1	<b>Qty (2) Timber Vases</b> with Artificial Flowers
503	1	<b>Oriental Pear Shape Vase</b> Green Gold & White, 370mm
504	1	<b>Samsung Tablet</b> Model GT-N8020, 16Gb, Blue Case, Note: No Cords
505	1	<b>Glass &amp; Metal Candle Lantern</b>
506	1	<b>Ornate Metal Wine Serving Rack</b> incl. (2) Glasses & Candle
507	1	<b>Pottery Glazed Cyan Bowl 13cm</b>
508	1	<b>Qty (2) Vases</b> Various Styles & Materials
509	1	<b>Qty (2) Assorted Ornaments</b> incl. Lombok Bowl & Pot
510	1	<b>Copper Candle Holder with Tray</b>
511	1	<b>Set of (2) Patch &amp; Striped Home Photo Frames</b> 200 x 250mm, (6 x 4"), Red, Yellow, Green & Blue
512	1	<b>Timber Silky Oak Turned Storage Jar &amp; Lid</b>

LOT NO	QTY	DETAILS
513	1	<b>Timber Lockable Jewellery Box</b> With Key
514	1	<b>Embellished Terrine &amp; Underplate</b> Blue & White
515	1	<b>Formeign (12) Piece Tea Set</b> With Black, Gold & White, Made in GDR (Germany)
516	1	<b>The Australian Concise Oxford Dictionary</b>
517	1	<b>Black Lockable Jewellery Case Box</b>
518	1	<b>Olympus Digital Voice Recorder</b> Model DS-5000, Compatible with Windows 7, XP, 2000, Vista & MAC OS
519	1	<b>Qty of (2) Items</b> Incl. Moore & Wright England Sheffield Micrometer & Jewellers Loop in Wooden Box
520	1	<b>Gold Coloured Wedding Band</b> With (3) CZ
521	1	<b>Sansui Digital Voice Recorder</b> Model A29, 8Gb
522	1	<b>Apple Ipod 16Gb</b>
523	1	<b>Iphone 5</b> Model A1429, 16Gb
524	1	<b>Heaven/Sent China Plate &amp; Stand</b> With Floral Pattern & Gift Box
525	1	<b>Sterling Crystal Cut Decanter &amp; (2) Crystal Cut Brandy Balloons</b> On a Mahogany Timber Stand
526	1	<b>Westinghouse 920 Freestyle Dishwasher</b>
527	1	<b>Samsung 2 Door Fridge/Freezer</b> Model SR430MW, 431L
528	1	<b>Samsung Fridge/Freezer</b> Model BJ503S-R, Upside Down, Polished Metal, 500L, Frost Free
529	1	<b>Westinghouse Fridge</b> Model WTM300WB, 300L
530	1	<b>Arp Dehumidifying Freezer</b> Model ONE 35 HGD, Also Suitable for Ice Cream, 270L, (6) Shelves, Red & Black
531	1	<b>LG Express Cool Bar Fridge</b> 140L, 550 x 600 x 850mm
532	1	<b>Twin Door Chest Freezer</b> 462L,
533	1	<b>Split Door Chest Freezer</b> 540L

LOT NO	QTY	DETAILS
534	1	<b>Bromic Chest Freezer</b> Model WOO680SC, 560L, With Glass Sliding Lids
535	2	<b>Caterchill Single Door Freezer</b> 368L
536	2	<b>Caterchill Upright Fridge Double Doors</b> Double S/Door, Mounted Motor, Caster/Wheels, Twin Sliding Glass Doors
537	2	<b>Caterchill Double Door 800L Fridges</b> On Castors
538	1	<b>Fisher &amp; Paykel Chest Freezer</b> Model H320, 320 Litre
539	5	<b>Catermaster Commercial Dishwasher Glass Racks</b> 490 x 490 x 100mm
540	1	<b>Noris Cafemate Dishwasher</b> Model IPNX1, Under Counter, Stainless Steel
541	1	<b>Commercial Dough Mixer Stainless Steel Bowl</b>
542	1	<b>Accutemp Steam &amp; Hold Fast Cook Oven</b> Model S34153D0803005, 3 Phase, 11.11 Amps, 415V, 8KW
543	1	<b>Brice Commercial Slicer</b>
544	1	<b>Waldoff Gas Pasta Cooker</b> Model No. PC8140G, 450 x 800 x 1130mm, Suitable for (4) Baskets
545	1	<b>Artisan Freezer</b> Model RSR2300-4R, 891L, Stainless Steel, (2) Doors
546	1	<b>Stainless Steel Fridge</b> (6) Doors, Motor on Top, 1900 x 1800 x 750mm
547	1	<b>Pasta Roller</b>
548	1	<b>Stainless Steel Single LP Gas Wok Burner</b> With Tap & Wheels, 700 x 700 x 600mm
549	1	<b>(4) Shelf Woodson Pie Warmer</b> (2) Sliding Doors, Front & Back, 640 x 640 x 460mm
550	4	<b>Banquet Chairs</b> with Metal Frame & Black Fabric Cushion Seat & Back
551	17	<b>Banquet Chairs</b> with Metal Frame & Red Fabric Cushion Seat & Back
552	1	<b>Euro Lab Coffee Machine</b> With Built in Grinder & Separate Frother
553	1	<b>Qty of Kitchen Items</b> Incl. (3) Sugar Bowl, (5) Butter Knives, Cake Server, Tray, Jug & (2) Casserole Dishes
554	8	<b>Lindam Electric Food &amp; Bottle Warmer</b>



LOT NO	QTY	DETAILS
555	1	<b>Qty of Assorted Kitchen &amp; Bar Items</b> Incl. Wine Cooler, Racks & Grill Plate
556	1	<b>Breville Juicer &amp; Attachments</b>
557	1	<b>Homemaker Microwave Oven</b> Model EM925EYP, 900W
558	1	<b>Qty of (7) Assorted Kitchen Items</b> Incl. Baskets, Platters & Glass Storage Jars
559	1	<b>Qty of (24) Assorted Wine Goblets &amp; Glasses</b>
560	1	<b>Qty of (2) kitchen Items</b> Incl. Schott Coffee Percolator & Sandwich Press Homemaker Model LW-010D
561	1	<b>Set of (4) Wiltshire Stainless Steel Glass Lid Pots</b> Various Sizes
562	1	<b>Qty of (13) Espresso Cups &amp; Saucers</b>
563	1	<b>Qty of (6) Kitchen Items</b> Incl. Jug, Recipe Book Stand, Wine Stand, (2) Basket for Dinner Rolls & Pie Dish
564	1	<b>Qty of (34) Assorted Wine Glasses Champaign &amp; Sherry Glasses</b>
565	1	<b>Stainless Steel Crockery &amp; Fondue Set</b> Incl. Fondue Recipe Book
566	1	<b>Qty of Household Items</b> Incl. (7) Espresso Cups & Saucers Square Shape, (3) Small Dipping Dishes & (5) Round Dipping Dishes
567	1	<b>Qty of (2) Household Items</b> Incl. Accura Digital Bathroom Scales Model ACC4011SO & Stainless Steel (3) Bay Food Warmer
568	1	<b>CaterMaster 3 Bay Benchtop Electric Bain Marie</b> 3 Pot, Stainless Steel, Analogue Thermostat 3 1/3 Size Pan, SUR/BAI003
569	1	<b>Qty of Cutlery</b> Incl. Knives, Forks & Spoons
570	3	<b>Catermaster Docket Holders</b> 1200mm (L)
571	1	<b>Qty of (5) Kitchen Items</b> Incl. Coffee Dripulator, Storage Jars & Rack
571.1	1	<b>Kenwood Cremissimo Coffee Machine</b> Model ES426
572	1	<b>Qty of (3) Household Items</b> Incl. Timber Cheese Board, Cupcake Holder & Brush Silver Condiment Basket
573	1	<b>Sunbeam Food Saver Vacuum</b> Model VAC420, Note: No Bags

LOT NO	QTY	DETAILS
574	1	<b>Avanti Deluxe Tefal (4) Slice Toaster</b>
575	1	<b>Ronson Olympia Kettle</b> Model 8558, Stainless Steel
576	1	<b>Homewell Chauffant Buffet Warmer</b> With (3) Stations or Warming Tray
577	1	<b>Qty of (13) Glass Bowls</b> Incl. Apple Shaped Fruit Bowl, Various Size Other Glass Bowls
578	1	<b>Qty of (14) Tungsten Halogen Lamp 2000W</b>
579	1	<b>LG Microwave</b> Model MS-1943AL
580	1	<b>Adjustable Galvanised Cold Room Shelving Unit</b> 1600 x 650 x 1800mm
581	1	<b>Breville Juice Fountain</b> With Attachments
582	1	<b>Breville Blender</b> Model BBL605, Electronic (5) Speed Control & Kinetix Blade Bowl System
583	1	<b>Qty of (8) Lurpak Ceramic Toast Holders</b>
584	3	<b>Stainless Steel Round Chafing Dishes</b> with Glass Lid
585	1	<b>Qty of (5) Kitchen Items</b> Incl. Vase, Marble Paper Towel Holder, Stand & Glass Bowl
586	1	<b>Stainless Steel Homemaker Deep Fryer</b> Model TD/07065B2
587	1	<b>Qty of (4) Kitchen Items</b> Incl. Bowl, Vase, Decorative Stand & Dip Bowl
588	1	<b>Homemaker Glass Multi Purpose Cooker</b> Model AOTF909, Air Turbo Oven, Note: Dial Missing
589	1	<b>Qty of (17) Cake Display Stands</b> Various Heights
590	1	<b>Qty of Cutlery</b> Incl. Knives, Forks, Spoons, Butler Knives, Soup Spoons
591	1	<b>Catermaster 3 Bay Benchtop Electric Bain Maries</b> with 3 Half Steam Dishes, Model TT-WE118
592	1	<b>Stainless Preparation Bench</b> With Undershelf & Splashback, (2) Cutout Holes for Dishes, 1350 x 800 x 1100mm
593	1	<b>Collamat 5000 Conveyor Labelling Machine</b> With Leuze Gk14 Captive Sensor & Keyence FS-V21 Dual Fibre Optic Sensor, To Suit Translucent Labels to Punets, Packets & Boxes

LOT NO	QTY	DETAILS
594	1	<b>Oscartielle Refrigerated Display Cabinet</b> Model Bancomarte 680274, 3770 x 1140 x 1340mm
595	1	<b>Woodson Counter Top Exhaust Canopy</b> 1000mm, 240V, Single Phase, .75KW, 3.1Amp, Model WCHD1000, 1000 x 1150 x 660mm
596	1	<b>Woodson Refrigerated Display Cabinet</b> With Drop in Motor
597	1	<b>Woodson Salamander</b> Model WGLS30, Single Phase, 14 Amps, 700 x 360 x 360mm
598	1	<b>Star Line Snackmaster 15 Conveyor Toaster</b>
599	6	<b>Catermaster Stainless Steel Mobile Kitchen Table Bench</b> With Castors & Underbench, Stainless Steel Top, 2440 x 780 x 900mm
600	5	<b>Heavy Duty (3) Level Commercial Trolley Cart</b> With Swivel Castor Wheels
601	1	<b>Qty of Assorted Household Items</b> Incl. Plasticware, Drainers, Cutlery, Holder, Sandwich Maker & Bar Mats
602	1	<b>LG Microwave Oven</b> Model NS3446VRW, 1100W
603	15	<b>Stainless Steel Half-Size Shallow Bain Marie Trays</b>
604	1	<b>Stainless Steel Steam Pan Bain Marie Trays</b> 150mm Deep
605	1	<b>Sharpe Carousel Microwave</b> Model R-200K, 800W
606	6	<b>Catermaster Stainless Steel 1.3M Preparation Benches</b> Adjustable Height, Stabilising Feet, Undershef, 1300 x 690mm
607	1	<b>Caterchill Commercial (3) Door Horizontal Wine Bottle Chiller</b> 330L, Bottom Rear Mounted Motor, (6) Shelves, Adjustable Heights, Turn On Display Light, Single Phase
608	1	<b>Metal (6) Shelf Display Unit</b> With Wire Shelving, 700 x 1660 x 520mm on Rollers
609	1	<b>Qty of (10) Assorted Books</b> Incl. Health Books, Cooking Books, Problem Solving
610	1	<b>Steel Bakers Rack</b> 18 Tiers, To Suit 16" Trays, 465 x 740 x 1950mm
611	1	<b>Svebo Pizza/Bakers Oven</b> (4) Deck, Type UEM43, 29.6Kw, Elem-415, On Wheels & Metal Frame, 1850 x 2000 x 1000mm
612	1	<b>Galvanised Bakers Rack</b> Incl. 35 Trays, 770 x 1670 x 500mm

LOT NO	QTY	DETAILS
613	1	<b>Taylor Soft Serve Ice Cream Machine</b> Model 8752-66, 3 Way Power, Single Serve
614	1	<b>Black Timber Framed Mirror</b> 58 x 1000mm
615	1	<b>Qty of Personal Items</b> Incl. Plain Basket, (8) Pairs of Slippers, (1) Remington Hair Dryer & (15) Coat Hangers
616	9	<b>Helly Car Chrome Tap Mixers</b>
617	4	<b>Stainless Steel Shower Arms</b> Model SH1004
618	1	<b>Chrome Single Towel Rack</b> Type 9505
619	1	<b>Stainless Steel &amp; Glass Double Shelf</b>
620	45	<b>Chrome Shower Arms</b> Model SH1003
621	22	<b>White Porcelain Bathroom Basins</b> Various Sizes & Styles
622	5	<b>Cylindrical Metal Rubbish Bins</b> With Foot Pedal, 170 x 250mm
623	1	<b>Clipsal 200mm Ceiling Exhaust Fan</b> Model CE200, Slimline Design, Low Noise, Ball Bearing Motor, Easy to Install
624	1	<b>Qty of (2) Bathroom Stainless Steel Rubbish Bins</b> 250mm
625	6	<b>White Vanity Basins</b> Above the Bench Model, Assorted Styles & Shapes
626	1	<b>Square White Dandeloin Vase</b>
627	1	<b>Vintage Style Timber Pears Soap Box</b>
628	2	<b>Fowler Bathroom Handbasins</b> Single Hole, Assorted Designs
629	1	<b>Conair Gold Coloured Electric Magnifying Mirror</b> Model C8420A,
630	1	<b>Exonix Dynamic Styler</b> Straightens Waves & Curls, As New
631	1	<b>Qty of (2) Stainless Steel Pedel Bins</b>
632	1	<b>Qty of (3) Stainless Steel Towel Rails</b> Assorted Sizes
633	1	<b>Qty of (4) Laundry Items</b> Incl. Square Trolley, Timber Towel Rack, Clothes Hanger & Ironing Board

LOT NO	QTY	DETAILS
634	19	Cotton Waffle Weave Dressing Gowns/Beauty Coats
635	1	Tabata Dive Topa buoyancy Vest With In Built Snorkel & Weighted
636	5	Miller Moxham Fall Arrest Harnesses Complete with Bag
637	2	Pool Que/Fishing Rod Holders
638	1	Qty of (3) Items Incl. Cane Basket, Solid Timber Chopping Block & Cane Walking Stick
638.1	1	Elemental Nordic Trekking Stick Model 7693
639	2	Commercial Insect Zappers with 18 Watt Fluro Tube
639.1	1	Qty of (2) Shakespear Rods & Reels Blue & Pink
640	1	Pair of Abe Roller Blades European Size 38
641	1	Hi Output Air Pump Double Quick 3 x Intex, 480mm
642	1	Fanguard Model PT-180, Tripod, Note: No Plate, Extendable Legs
643	1	Blade Board Black with Red Flames
644	1	Qty of (3) Camping Items Incl. Two Person Dome Tent, Sleeping Bag & Plastic Cups & Plates
645	1	Yamaha Proto-07 Tennis Racket & Cover
646	11	BCD Solar Power Caution Lights With Stand & Magnetic Back, 0.5W
647	1	Gacha Toy Vending Machine & Contents
648	12	BCD Lighting LED Solar Lanterns Incl. USB Charger & USB Cord
649	11	BCD Lighting LED Solar Lanterns Incl. Solar Panels, Compass, Cell Phone Adaptor, Rechargeable Batteries & Power Adaptor
650	17	Six Meter LED Rope Lights With (8) Functions
651	1	Mavrick Avanti Motor Bike Helmet Medium

LOT NO	QTY	DETAILS
652	1	<b>Almin Glass Table</b> Note: Leg Damaged, 1800 x 1100mm
652.1	1	<b>Childrens Toy Story Scooter</b>
653	2	<b>Metal &amp; Mesh Outdoor Folding Chairs</b>
654	1	<b>Portable Gas Cooking Stove</b> With (3) Gas Cans, Stainless Steel Pot 7.6L & 27L Insulated Cooler Jackaroo
655	1	<b>Engel Fridge/Freezer</b> Model MT45F-G4-S, 40L, Complete with Cover, 12V/ 24V
656	2	<b>Step Ladders</b> Assorted Styles, Domestic Rated, 100Kg Max., (1) Guide Rail
657	1	<b>OPI Esky</b> 100L Capacity
658	1	<b>Ice Cool Large 70L Esky</b>
659	1	<b>Pair of Marks Buccaneer Water Ski's</b>
660	3	<b>OPI Esky's 100L</b>
661	2	<b>Assorted Golf Bags &amp; Contents of Assorted Golf Clubs</b>
662	2	<b>Black Leather Banana Lounges</b>
663	2	<b>Wanderer Outdoor Camp Stretchers</b> With (2) Foam Underlay & (2) Fold Up Seats, Note: Camp Stretchers New
664	1	<b>Fit Massage Vibrating Machine</b> With a 50 Level Speed Range
665	1	<b>Qty of Gym Equipment</b> Incl. Total Gym 1000 Exercise Machine & (8) Weights Assorted Sizes & (2) Dumbbells & Weights, Note: Total Gym Has Parts Missing
666	2	<b>XMH 20" Extreme Stunt/Trick Black BMX Bikes</b> Note: (1) Damaged
667	1	<b>Aluminium Enerdised Security Screen</b> 250 x 820mm
668	5	<b>Aluminium Framed Screen Doors</b> 950 x 2050mm
669	2	<b>Square Marble Umbrella Stands</b> 350 x 350mm, With Umbrellas
670	1	<b>Qty of (2) Cafe Umbrellas</b> With Cast Iron Stands & Spare Shade
671	1	<b>Yamato Sewing Machine Over Locker</b> Complete with Bench

LOT NO	QTY	DETAILS
672	2	<b>Coden Marine Transceivers</b> Model 6801-5MK2C
673	1	<b>Coden Marine Transceiver</b> Type 6801-5MK2B
674	1	<b>Scorpion 2 Stroke Petrol Generator</b> Model SC950, 850W Capacity
675	1	<b>Power Base 2 Stroke Petrol Generator</b> 650-850W Capacity
676		<b>Bahramshahr 20" Chainsaw</b> With a 2 Stroke Petrol Engine
677	1	<b>Boat Excillery (AUX)</b>
678	4	<b>250-260mm Air Hoses</b>
679	1	<b>Qty of (5) Air Hoses</b>
680	2	<b>Blue Metal Lockers</b> 450 x 1800 x 300mm
681	2	<b>Crimsafe Screen Doors</b> 910 x 2080mm
682	4	<b>Timber Internal Doors</b> 2020 x 820mm
683	1	<b>Ryobi Leaf Blower/Vacuum</b> Model RBL30MVA, Complete with Bag
684	1	<b>Weed Eater</b> Model 2560
685	2	<b>Sets of (2) Metal Fluro Guards</b> 1140 x 250mm
686	1	<b>Qty of Electrical Items</b> Incl. Weather Proof Power Outlets, Double Power Point Fittings, Roofing Gromets, Assorted Electrical Stickers, Cat 5 Cable & RJ45 Sockets
687	1	<b>Heavy Duty Extension Lead</b> With Isolation, Approx. 20M
688	1	<b>Heavy Duty Extension Lead</b> Approx. 30M
689	1	<b>Qty of Climbing Ropes &amp; Safety Straps</b> For Roofing Work, Incl. Carabiners, Harnesses & Portable Roof Anchor for Metal Roofs
690	1	<b>Qty of Assorted PVC Fittings &amp; Stainless Steel Clips</b>
691	1	<b>Qty of Assorted Electrical Clipsal Fittings &amp; Rings</b>

---

LOT NO	QTY	DETAILS
692	1	<b>Qty of Electrical Items</b> Incl. Circuit Breakers
693	1	<b>Qty of Electrical Items</b> Incl. (7) Fluro Bulbs TLD36W/840 & (6) Starters
694	1	<b>Qty of Isolation Switches</b> Various Voltages from 250V to 1000V, Incl. Weather Proof Enclosures
695	1	<b>Qty of Organised Solutions Handy Storage Plastic Totes</b> In Various Sizes
696	1	<b>Qty of Electrical Items</b> Incl. Circuit Breaker Enclosures & Switch Panels
697	1	<b>White External Timber Door</b> 820 x 7020mm
698	4	<b>Speedy Wheels 5 Stud Rims</b> 15 x 6.5
699	1	<b>Set of (4) XHP 19x9" Ford Rims</b> 5 Stud
700	1	<b>Set of (4) King Wheels</b> 5 Stud Rims, 16 x 8
701	1	<b>Set of (4) Mazda Shaker Alloy Rims</b> 5 Stud, 17 x 7.5
702	1	<b>Set of (4) Akina Multi Stud Alloy Rims</b> 16 x 7
703	1	<b>Set of (4) Stud Rims</b> Model Tarmac, 15 x 6.5
704	3	<b>ROH 6 Stud Rims</b> 16 x 7, In White Finish
705	2	<b>Standard Holden Rims</b> 5 Stud
706	2	<b>Jingo Multi Stud Galvanised Rims</b> 13 x 4.5
707	2	<b>Galvanised 5 Stud Rims</b> 14 x 6
708	1	<b>SSW Stamford 5 Stud Rim</b> 18 x 8
709	2	<b>King Wheels 6 Stud Rims</b> 16 x 6
710	2	<b>Speedy Wheels</b> 6 Stud Rims, 16 x 7

---



LOT NO	QTY	DETAILS
711	1	<b>SSW Stamford Rim</b> 5 Stud, 18 x 8
712	1	<b>CSA Alloy Rim</b> 14 x 7, 5 Stud
713	1	<b>(6) Stud Rim</b> 15 x 7
714	1	<b>JCA 4 Stud Rim</b> 10 x 6
715	1	<b>Performance Alloy Trailer Rim</b> 6 Stud, 14 x 6
716	1	<b>SSW Stamford Rim</b> 5 Stud, 17 x 7.5
717	1	<b>SSW Stamford 6 Stud</b> 16 x 7
718	1	<b>Victa Pace Cut &amp; Catch</b> 500 Series Briggs & Stratton Motor, 158CC & Grass Catcher
719	1	<b>Superswift Edger</b> With a Briggs & Stratton Motor, 3.5Hp
720	1	<b>Rover Lawn Mower</b> Pedigree, 4 Stroke Briggs & Stratton 50 Engine, With Catcher
721	1	<b>Ozito Silent Shredder</b> Electric, 2400W
722	1	<b>Yard-Man 4Hp Edger</b> Incl. Curb Wheel 9" Triplex Blade with a Briggs & Stratton Motor
723	1	<b>Solo Backpack Garden Blower</b> Model 471
724	1	<b>Morrison Torpedo 475 ST Lawn Mower</b> Powered by a 4 Stroke Briggs & Stratton Quattro 40 Engine, Incl. Catcher
725	1	<b>Ryobi Whippersnipper</b> Model RBCGN25SS, Petrol
726	1	<b>Talon Eagle Classic Line Trimmer</b> Model AT33581, 2 Stroke
727	1	<b>Ryobi Line Trimmer</b> Model PLT3043A, 2 Stroke
728	2	<b>Husqvarna 16" Demo Petrol Saws</b> Model K970
729	2	<b>Husqvarna Petrol Demo Saw 14"</b> Model K90 & K960

LOT NO	QTY	DETAILS
730	1	<b>Shindaiwa Backpack Blower</b> Model EB8520
731	1	<b>Talon Tuff Tools Eagle Jet Pack Blower 32CC</b> Model AB3202, Petrol
732	1	<b>2006 Sunrise Hydraulic Iron Worker</b> Model 1W-45M, 45 Ton, Serial No.: 360298, Punch/ Shear incl. Assorted Tooling
733	1	<b>Roll of Outdoor Black Mesh</b> As New, 1800mm
733.1	2	<b>LED Panel Lights</b> 1200 x 600mm
734	1	<b>Woodman Dust Extractor</b>
735	1	<b>Black &amp; Decker 185mm Electric Circular Saw</b> Model CS718-XE
736	1	<b>Makita Circular Saw</b> Model 5008B, 210mm
737	1	<b>Makita Metal Cutter</b> Model JS3200
738	1	<b>Hitachi Pneumatic Nail Gun</b> Model NT 65AB
739	1	<b>Qty of (2) Metal Key Holders</b> With Keys, 340 x 240mm & 70 x 250mm
740	1	<b>Makita Electric Flat Sheet Sander</b> Model 9036
741	1	<b>Makita 18V Drill</b> With Battery & Charger
742	1	<b>Ozito Petrol Chainsaw</b> 25.4CC, 305mm Bar
743	1	<b>Basso Pneumatic Staple Gun</b>
744	9	<b>6" Digital Callipers</b> with 1.5" Digital Display & Plastic Carry Case
745	1	<b>Ryobi Air Shears</b> As New, Max. Material Thickness 20 Gauge (12mm)
746	1	<b>Steel Lino Roller</b>
747	2	<b>Heavy Duty Extension Leads</b> (2) Olsent Heavy Duty Extension Leads, 20M with Power On Indicator, 10Amp Plug & Socket, 240V 2400W
748	1	<b>Ryobi Battery Operated Drill</b> Model BPL-1815, 18V, Lithium Battery

LOT NO	QTY	DETAILS
749	1	<b>Weldmac 500S Welder</b> Model Weldmac SWF4, Incl. Hoses
750	1	<b>Beissbarth Microline 1800 Wheel Alignment Machine</b> with LG Coolermaster Computer, Asus Monitor, Keyboard, Manuals, 240 Volt
751	1	<b>Miller Electric Arc Welder</b> Model DIALARC HF CY50, Single Phase, 12.4KW
752	1	<b>Set of Oxy Acetylene Leads &amp; Gauges</b> With Trolley
753	1	<b>Garrick WLL 3 Ton Lifting Sling</b>
754	1	<b>20M Air Hose</b>
755	1	<b>Qty of Assorted Tie Down Straps</b>
756	1	<b>Qty of Tiling Chemicals</b> Incl. Sika Film, Primebond Primer & Dribound Grout
757	1	<b>Steton Panel Saw</b> Model SC400NC, Serial No. 85/04008
758	1	<b>1-11 Checker Plate Lockable Tool Box</b> Approx. 1250 x 380 x 400mm
759	1	<b>Cig Transarc Welder</b> Type 620122
760	1	<b>Hydraulic Power Pack</b> Powered with a 240V Motor
761	1	<b>Qty of Clipsal Wall Brackets</b>
762	1	<b>WIA Weldmatic 150S Mobile Welders</b> Model P104-0
763	1	<b>Bucket of Galvanised Roofing Nails</b>
764	1	<b>Qty of (8) Assorted Aerials &amp; Trundgeons</b>
765	1	<b>FSKENG Australia Corrugated Iron Guillotine</b>
766	1	<b>Glenair Air Compressor</b> Model 10, 240 Volt
767	4	<b>Two Level In Feed Frames</b> Multi Roller Tops, Approx. 600mm Wide
768	1	<b>Step Ladder</b> Load Rate 100kgs
769	1	<b>Galvanised (6) Step Ladder</b>
770	1	<b>Qty of (2) Aluminium Ladders</b> Incl. Rhino Dual Purpose Ladder Model DDP07 Max. Height 3.8m & Aluminium Step Ladder

LOT NO	QTY	DETAILS
771	1	<b>Husqvana 14" Petrol Demo Saw</b> Note: Parts Only, 5400RPM
772	1	<b>Extension Roller Support</b>
773	1	<b>Galvanised Tile Cutter</b>
774	1	<b>SCA Heavy Duty 900AMP Jump Starter</b> Note: As New in Box
775	1	<b>Qty of (9) Car Items</b> Incl. Spare Parts for Magna, Front Indicator Lights, Water Pump & Gasket Kit & 5L 20 Debut 60 Oil
776	1	<b>Ryobi Chainsaw</b> Model PCN4040, 40CC, Complete with Bar Cover
777	1	<b>Hills 12L Napsack Sprayer</b>
778	1	<b>SDS 2Hp 2 Stroke Generator</b> With a 750W Output, 4L Capacity
779	1	<b>Qty of (6) Hub Bearings &amp; (3) Studs</b>
780	5	<b>Microphone Cables</b> Model PRO-HL-3606
781	1	<b>Qty of Fishing Items</b> Incl. 1000M of Dyneema & Sharfs, \$1,200 Purchase Value
782	1	<b>Oregon Chainsaw</b> Petrol, 25.4CC, 305MM Bar
783	18	<b>Multi Tools</b> Incl. Pliers, Knife, Phillips & Flathead Screw Drivers
784	3	<b>ID Australia Stationary Motor</b> with a GX200 6.5Hp Engine
785	1	<b>Scorpion Air Framing Nailer</b> With Nails, Goggles & Case, As New
786	1	<b>Water Timer</b> with Clip Lock Fitting
787	1	<b>Bosch Electric Belt Sander</b> With Dust Catcher
788	1	<b>Twin Head Bench Grinder</b> Model GB601, 240 Volt with Safety Mask & Gloves
789	1	<b>Pair of 36" Bolt Cutter</b>
790	1	<b>5" Bevelling Attachment</b>
791	85	<b>Diamond Cane Knives</b>
792	27	<b>Assorted Saw Blades</b>

---

LOT NO	QTY	DETAILS
793	24	Glass Suction Plates
794	1	Prolift Hydraulic Hydraulic Trolley Jack Model F1650, Walking Load Limit 1650kg
795	1	Qty of (2) Tools Incl. Small Axe, Tomahawk & Claw Hammer
796	1	Qty of Assorted Bolts & Screws Incl. Roofing Screws, Dyna Bolts, Stainless Steel Bolts & Plastic Clips
797	3	15 Mtr PVC Air Hoses 3/8"
798	1	Geared Beam Trolley 3 Tonne Certified
799	1	Ryobi Command Force 1300W Circular Saw Model CW185B
800	1	Autotecnica Classic Light Wood Grain Alloy Spokes Steering Wheel Model SW506CW, 350mm
801	1	Ryobi Circular Saw Model ESC1285RG
802	1	SCA Tools Set 105 Pieces Incl. Spanners, Sockets, Pliers, Allen Keys, Screw Drivers
803	1	Endeavour Air Drill As New
804	1	Pierce Sales PS 5000 Lb 4WD Winches 12V, with Remote
805	1	Berent Laser Model BT4120, With Case
806	1	Gerni Model Classic 110.2, Complete with Gun & Hoses
807	1	Ramset Hammer Drill Model DD528, Comes with Case
808	1	Heavy Duty Aqua Glide Hose & Reel
809	1	Qty of (2) Garden Items Incl. Aqua Guide Hose Reel & Hose (Heavy Duty) & Orange Tractor Sprinkler
810	1	Self-Retracting Air Hose Reels
811	1	Qty of Nails Screws Nuts & Bolts
812	1	Qty of (4) Hella Lights Incl. (2) Tail Lights & (2) Head Lights
813		Vacant Lot

---

LOT NO	QTY	DETAILS
814	2	<b>Aimrite Atmosphere Floats &amp; Air Gauge</b> Purchase Value \$600
815	1	<b>Qty of Assorted Hardware Items</b> Incl. Mastic Guns, Spanners, Scrapers, Eyelet Plier Set, Ear Muffs, Safety Glasses etc.
816		<b>Vacant Lot</b>
817	2	<b>Extension Leads</b>
818	3	<b>Trailer Jockey Wheels</b> 800Lb Load Rating
819	1	<b>Qty of Metal Wall Mounts &amp; Fittings</b>
820	1	<b>Box of Assorted Hand Tools</b> Incl. Rubber Mallets, Screw Drivers, Electrical Tape, Hacksaw, Spirit Levels & Crimping Tools
821	2	<b>Boxes of Roofing Screws &amp; Rubbers</b>
822	2	<b>Telescopic Halogen Lamp Portable Twin 500W Flood Lamps</b> on Stand
823	1	<b>LED 150W High Bay Downlight</b>
824	1	<b>Qty of Assorted Welding Accessories</b> incl. Welding Rods, Masks, Gloves, Wire, Gauges, Nozzles, etc
825	1	<b>Orange Extension Lead</b> With Light & Guard
826	1	<b>Supagas Heat Shrink Gun</b> With Hose & LPG Regulator & Qty Shrink Wrap
827	2	<b>Geelong Power Coated (4) Shelving Units</b> 150Kg Slot Fix, Easy to Assemble, Complete with 9mm Fibre Board Shelves, 1500 x 810 x 310mm
828	1	<b>Dewalt 18 Volt Right Angle Drill/Driver</b> Model DW960 with Battery
829	3	<b>Bumper Mounted 12 Volt Winches</b> with 2000 Pound Rating
830	2	<b>Heavy Duty Winch Ropes</b> With Hook
831	1	<b>Telwin Moderna 150 Stick Welder</b> 240 Volt
832	1	<b>Super Tool 26Pce 3/4" Drive Socket Wrench Set</b>
833	1	<b>Stanley Rolling Cabinet &amp; Chest</b> Incl. Spanners, Sockets & Allen Keys, Model STH70499L, 1030 x 600 x 300mm

---

LOT NO	QTY	DETAILS
--------	-----	---------

---

## SPECIAL LOTS 834-953 WILL BE OFFERED AT 12 NOON

834	1	<b>CP 2008 TGB Xmotion 250 Motorcycle Scooter</b> Black, Automatic, Engine No.: MH020733 VIN No.: RFCCUBCUB9Y000958 Scooter is sold without a Statutory Warranty, is not subject to a cooling off period and is sold registered and without a roadworthy certificate BUYERS PREMIUM: 7.7%
835	1	<b>Victa 3010T 10.5Hp 5 Speed Transaxle Ride On Lawn Mower</b>
836	1	<b>Suzuki AE50 Motor Scooter</b> VIN No.: JS1CA1DC1R2100088
837	1	<b>CP 1985 Mitsubishi Magna GLX Sedan</b> Gold, Automatic, 4 Cylinder, Petrol Engine No.: V56IT05079 VIN No.: TM2H41SE30005095 Indicating: 180,505 Kms Vehicle is sold without a Statutory Warranty, is not subject to a cooling off period and is sold unregistered and without a roadworthy certificate BUYERS PREMIUM: 7.7%
838	1	<b>CP 2003 Mitsubishi Magna Sedan</b> Green, Automatic, 6 Cylinder, Petrol Engine No.: 6G74M298909 VIN No.: 6MMTJ8D423T061808 Indicating: 132,613 Kms Vehicle is sold without a Statutory Warranty, is not subject to a cooling off period and is sold unregistered and without a roadworthy certificate BUYERS PREMIUM: 7.7%
839	1	<b>CP 2000 Toyota Echo Hatch</b> Gold, Manual, 4 Cylinder, Petrol Engine No.: 2NZ1093367 VIN No.: JTDKW133203004486 Indicating: 171,908 Kms Vehicle is sold without a Statutory Warranty, is not subject to a cooling off period and is sold unregistered and without a roadworthy certificate BUYERS PREMIUM: 7.7%
840	1	<b>CP 1984 Viscount Aero-Lite White Caravan</b> Incl. 2 Cylinder Storage, Gas Stove, Gas Oven, Gas Fridge, Table & Bench, Double Bed & Pull Out Shade Model No.: Grand Tourer VIN No.: TR410022087 Caravan is sold without a Statutory Warranty, is not subject to a cooling off period and is sold unregistered and without a roadworthy certificate
841	1	<b>CP 2004 Hyundai Elantra Hatch</b> White, Automatic, 4 Cylinder, Petrol Engine No.: G4GC4018929 VIN No.: KMHDM41DR5U955796 Indicating: 182,316 Kms Vehicle is sold without a Statutory Warranty, is not subject to a cooling off period and is sold unregistered and without a roadworthy certificate BUYERS PREMIUM: 7.7%

LOT NO	QTY	DETAILS
842	1	<b>CP 2005 Ford Falcon Wagon</b> Silver, Automatic, 6 Cylinder, Petrol Engine No.: JGWA4R68106 VIN No.: 6FPAAAJGWA4R68106 Indicating: 180,111 Kms Vehicle is sold without a Statutory Warranty, is not subject to a cooling off period and is sold unregistered and without a roadworthy certificate BUYERS PREMIUM: 7.7%
843	1	<b>CP 2008 Holden Statesman Sedan</b> White, Automatic, 6 Cylinder, Petrol Engine No.: 1OH7JH082530484 VIN No.: 6G1MY55789L232592 Indicating: 289,797 Kms Vehicle is sold without a Statutory Warranty, is not subject to a cooling off period and is sold unregistered and without a roadworthy certificate BUYERS PREMIUM: 7.7%
844	1	<b>CP 2001 Holden Commodore Sedan</b> Maroon, Automatic, 6 Cylinder, Petrol Engine No.: VA148636 VIN No.: 6HBVXK69A1L762952 Indicating: 284,247 Kms Vehicle is sold without a Statutory Warranty, is not subject to a cooling off period and is sold unregistered and without a roadworthy certificate BUYERS PREMIUM: 7.7%
845	1	<b>CP 2010 Great Wall SA220 Dual-Cab</b> White, Manual, 4 Cylinder, Petrol Engine No.: D100235108 VIN No.: LGWCA2176AA621537 Indicating: 69,943 Kms Vehicle is sold without a Statutory Warranty, is not subject to a cooling off period and is sold unregistered and without a roadworthy certificate BUYERS PREMIUM: 7.7%
846	1	<b>CP 2004 Holden Utility</b> Red, Manual, 6 Cylinder, Petrol Engine No.: 1OHBBH043010140 VIN No.: 6G1ZK43B75L361846 Indicating: 136,957 Kms Vehicle is sold without a Statutory Warranty, is not subject to a cooling off period and is sold unregistered and without a roadworthy certificate BUYERS PREMIUM: 7.7%
847	1	<b>CP 2008 Toyota Prius Hatch</b> White, Automatic, 4 Cylinder, Petrol Engine No.: U32440G VIN No.: JTDKB22U203422817 Indicating: 57,077 Km's Vehicle is sold without a Statutory Warranty, is not subject to a cooling off period and is sold unregistered and without a roadworthy certificate BUYERS PREMIUM: 7.7%



LOT NO	QTY	DETAILS
848	1	<b>CP 2000 Mitsubishi Mirage Hatch</b> Blue, Manual, 4 Cylinder, Petrol Engine No.: 4G15AD6352 VIN No.: JMFMNJC2AYU001749 Indicating: 356,226 Kms Vehicle is sold without a Statutory Warranty, is not subject to a cooling off period and is sold unregistered and without a roadworthy certificate BUYERS PREMIUM: 7.7%
849	1	<b>CP 2005 Ford Territory Wagon</b> Blue, Automatic, 6 Cylinder, Petrol Engine No.: JGAT5R72381 VIN No.: 6FPAAAJGAT5R72381 Indicating: 180,277 Kms Vehicle is sold without a Statutory Warranty, is not subject to a cooling off period and is sold unregistered and without a roadworthy certificate BUYERS PREMIUM: 7.7%
850	1	<b>CP 2001 Holden Commodore Wagon</b> Red, Automatic, 6 Cylinder, Petrol Engine No.: VA106071 VIN No.: 6H8VXK35A1L708208 Indicating: 265,969 Kms Vehicle is sold without a Statutory Warranty, is not subject to a cooling off period and is sold unregistered and without a roadworthy certificate BUYERS PREMIUM: 7.7%
851		<b>Vacant Lot</b>
852	1	<b>1969 Single Axle Box Trailer</b> Note: No VIN No.
853	1	<b>1990 Olympic Single Axle Box Trailer</b> Vin No.: 6AKTH0000KR0T0755
854	1	<b>1991 Homemade Single Axle Box Trailer</b> Vin No.: 6H9T20000M2AA4006
855	1	<b>Steel Tyre Rack</b> 3 Bay, 6300 x 540 x 2300mm, 3 Shelves
856	1	<b>Plastic Wheelbarrow &amp; Metal Frame</b> Incl. Parts, Note: Tyre Not Attached
857	4	<b>Assorted Heavy Duty Steel Trestles</b>
858	4	<b>Aluminium Scaffolding Brackets</b> 1550mm (H)
859	1	<b>Qty of Heavy Duty Steel Racks</b> Half Tonne Each Rack, 2.7 x 2M x 85cm, (3) Shelves
860	1	<b>Qty of (7) Steel Trestles</b> Various Sizes
861	1	<b>Qty of Aluminium Fence Panel</b> Incl. 950 x 2300mm & 820 x 900mm

LOT NO	QTY	DETAILS
862	2	Ullrich 3.2 Metre Aluminium Trestles
863	1	Good Year Machinery Tyre 440/80R28 INDIT530 Radial
864	1	Chrysler Outboard Motor 75Hp
865	1	Large Wooden & Metal Saw Horse Bench
866	1	Trailer Axle Approx. 2000mm, Inside Spring Measurement 1420mm
867	1	G. James 2.8 Metre Aluminium Trestles
868	3	Cool Room Panel/Doors Insulated Assorted Sizes, 2020 x 120 x 820mm
869	1	Boral Perspex Windows 1950mm Long, Various Heights
870	3	Galvanised Steel Conveyor Sections 3000 x 670mm
871	1	Qty of Heavy Duty Steel Racks Frames & Shelves, Half Tonne Each, 1.5 x 2M x 85cm (3) Shelves
872	1	Fusheng T55 Workshop Air Compressor Model TA100, Triple Head, Serial No.: 5B187
873	1	Green (3) Seater Cast Iron Bench With Intricate Pattern, 1300 x 900mm
874	1	Lincoln Welder 225 Diesel Powered with Lombardini Motor, LDA820
875	2	Quick Attached Locking Plates Suitable for a Bob Cat, 1200 x 450mm
876	1	Bobcat Excalibur Cleaning Bucket 1400mm
877	1	Hydraulic Concrete Mixer
878	1	NOR Engineering Hydraulic Concrete Mixer Model Universal, Approx. 0.5 Mtr 3
879	1	Toyota Hilux Dual Cab Drop Side Tray Fabricated Steel Vin No.: MROFZ22G901174490
880	1	Portable Toilet

LOT NO	QTY	DETAILS
881	1	<b>2005 Boxer TL224 Rubber Tracked Skid Steer</b> with Forklift Tyne, Loader Bucket, Quick Hitch Attachment, Powered by Honda GX660 Petrol Motor Serial No.: 865 Part No.: B11A01101-230 Note: Engine has been replaced Mobile Plant is sold without a Statutory Warranty, is not subject to a cooling off period and sold unregistered and without a Roadworthy Certificate. BUYERS PREMIUM: 11%
882	1	<b>600mm Post Hole Auger</b>
883	1	<b>Hydraulic Rock Breaker</b> with Quick Hitch Attachment
884	1	<b>Auger Adaptor (Round to Square)</b>
885	1	<b>CP 2012 John Deere 670G Grader</b> Yellow, Power Shift, 6 Cylinder, Diesel Engine No.: RG6090L VIN No.: IDW670GXCA0630677 Indicating: 3,514 Hrs Grader is sold without a Statutory Warranty, is not subject to a cooling off period and is sold unregistered and without a roadworthy certificate BUYERS PREMIUM: 11%
886	1	<b>1999 TB 80Ft Snorkel Boom Lift</b> Orange, 4 Cylinder, Runs on LPG Gas Engine No.: 24JL3394BA55 Vin No.: SERNO992727 Note Alpha Test Completed on 16th April, 2010, Form No.: NDT001.03 Boom Lift is sold without a statutory warranty, is not subject to a cooling off period and is sold unregistered and without a roadworthy certificate BUYERS PREMIUM: 11%
887	2	<b>Fabricated Spreader Bars</b> Approx. 1.3 Metres (L)
888	1	<b>Pair of Manufactured Fork Slippers</b> 250 x 100 x 3 Metre
889	1	<b>Qty of (2) Truck Rims &amp; Tyres</b> incl. 8.25R15 TR, 8.25R16 LT, 9.00R20
890	1	<b>Steel Round Split Fuel Tank (Fuel/Oil) 400L</b> 1220 x 660mm
891	1	<b>Steel Round Fuel Tank 2200L</b> Approx. 550mm
892	1	<b>Metal Tradesman Canopy</b> Doors Open at Back & Both Sides, 2500 x 1580 x 1230mm
893	1	<b>Rogers Round Fibre Glass Tank</b> Suitable for Agriculture, Approx. 8910L, 1.88 x 2.46

LOT NO	QTY	DETAILS
894	1	<b>Aluminium Truck Tray</b> To Suit 4.5 Tonne Truck
895	1	<b>Qty (5) Aluminium Ladder Sections</b> Various Heights
896	6	<b>Wheels &amp; Tyres</b> 8x25 RIS
897	1	<b>Bobcat T300 Compact Skid Track Loader</b> Road & Rubber Tracked with 4 N 1 Bucket Serial No.: 532013915 Skid Steer is Sold without a Statutory Warranty, is not subject to a cooling off period and is sold unregistered and without a roadworthy certificate BUYERS PREMIUM: 11%
898	1	<b>2006 DAF 75.310 Diesel Powered 4x2 Powered 4x2 Prime Mover</b> Model FTCF75 with Air Bag Suspension, Quick Release Turntable, Dual Fuel Tanks GVM: 17,400 Kg Engine No.: S-27398 VIN No.: XLRTE7575PC5E698835 Indicating: 814,724 kms Prime Mover is sold without a Statutory Warranty, is not subject to a cooling off period and is sold unregistered and without a roadworthy certificate BUYERS PREMIUM: 11%
899	1	<b>1989 Two Axle Dog Trailer</b> With Ball Race Turntable & Pintal Tow Hitch with Rear Hydraulic Machinery Ramps, Spring, Suspension 7.3 Metre Deck, 10 Speed Gear Gear Box, 7.6 Metre Steel Checker Plate Tray with Twin Tub Rack Frame, Single Drive Lazy Axle GTM: 16,000Kg Serial No.: T013231 VIN No.: 689RCA34AKAAA9482 Trailer is sold without a Statutory Warranty, is not subject to a cooling off period and is sold unregistered and without a roadworthy certificate BUYERS PREMIUM: 11%
900	1	<b>1979 Toyota Forklift</b> Model 42-3FG25, Vert Mast, 1890kg, Lift Height 4500mm, Load Centre 600mm, Petrol
901	1	<b>2011 Komatsu FG40Z1-7 4T Industrial Forklift</b> 4.3 Metre Two Stage Mast, Gas/Petrol with Side Shift, Freightmate Weightometer, (Excludes Gas Bottle) Serial No.: 105276 Indicating: 7398.9 Hours Forklift is sold without a Statutory Warranty, is not subject to a cooling off period and is sold unregistered and without a Roadworthy Certificate. BUYERS PREMIUM: 11%

LOT NO	QTY	DETAILS
902	1	<b>1999 NPR Isuzu 300 Medium Truck Cab</b> White, Manual, 6 Cylinder, Diesel, New Clutch Recently Fitted, 6.3 Metre Checker Plate Steel Tray with 1Mtr (H) Side Gates, Overhead Load Rack Frame with Alloy Bull Bar TARE: 3470, GVM: 6200 Engine No.: 664900 VIN No.: JAANPR71LX7101264 Indicating: 467,654 kms Truck is sold without a Statutory Warranty, is not subject to a cooling off period and is sold unregistered and without a roadworthy certificate BUYERS PREMIUM: 11%
903	1	<b>1987 Mitsubishi FM Series Dual Axle Tray Truck</b> Model FM515MS, 6 Cylinder Diesel with Alloy Bull Bar Chassis No.: 500481 Engine No.: 6D14435083 VIN No.: FM515MSUD21500481 Indicating: 183,188 Kms Note: Engine Has Been Replaced Truck is sold without a Statutory Warranty, is not subject to a cooling off period and is sold unregistered and without a roadworthy certificate BUYERS PREMIUM: 11%
904	1	<b>300 Lineal Meters of Hardwood</b> Assorted Lengths & Sizes
905	1	<b>Qty of Hardwood</b> Assorted Sizes, (6x1, 4x1, 3x1)
906	1	<b>640 Linear Meters of Hardwood Decking</b> Redwood Timbers
907	1	<b>230 Linear Meters of Hardwood Decking</b> Bloodwood Timbers, Assorted Sizes
908	1	<b>Qty of Assorted Mixed Pine</b> Assorted Sizes
909	8	<b>Slabs of White Cedar</b> Rough Cut, Assorted Sizes & Lengths
910	1	<b>1071 Linear Meters of Rough Cut Hardwood</b> Assorted Sizes & Lengths
911	1	<b>Qty of Mixed Hardwood Timber</b> Assorted Sizes & Lengths
912	1	<b>Hardwood Timber Wall Shelf/Display</b> 1115 x 1907mm
913	1	<b>Qty of (26) Assorted MDF Boards</b> Up to 1800 x 1800 x 18mm, Pallets Contents
914	2	<b>Timber Boat Oars</b>
915	1	<b>Aluminium Bird Cage</b> 470 x 340 x 1000mm

LOT NO	QTY	DETAILS
916	1	<b>Screw-Jack</b> Assorted Size
917	1	<b>Metal Drop in Storage Tray</b> 930 x 1310 x 300mm
918	1	<b>Repco Torrent 18 Speed Mens Black White &amp; Blue mountain Bike</b> With Front Suspension, Note: Missing (1) Pedal
919	1	<b>Repco Vector 18 Speed Mens Red &amp; Black Mountain Bike</b> With front Suspension
920	1	<b>Mens Black &amp; Blue 18 Speed Mountain Bike</b> With Adjustable Front Suspension
921	1	<b>Mambo Silver Freestyle Bike</b> Single Speed, Fixed Gear
922	1	<b>Huffy Pulsar 18 Speed Mens Black &amp; Red Mountain Bike</b> With Front & Rear Suspension & Front Disc Brakes
923	1	<b>Southern Star Terrain 18 Speed Womens Maroon Mountain Bike</b> With Front & Rear Suspension
924	1	<b>Tarini TS18 Speed Womens Silver &amp; Blue Mountain Bike</b> Model TS18
925	1	<b>MGP Single Speed Black BMX</b> With Free Wheel & Stunt Pegs on Front & Rear
926	1	<b>Giant Single Speed Mens Black &amp; Red BMX</b> With Free Wheel
927	1	<b>Cyclops Ridge All Terrain 18 Speed Womens Purple &amp; White Mountain Bike</b> With Front Suspension
928	1	<b>Black BMX Bike</b> With Free Wheel Action
929	1	<b>Redline Single Speed Green BMX</b> With Free Wheel
930	1	<b>Kent Shimmer Single Speed Blue BMX</b>
931	1	<b>Repco Combat 29 ER 18 Speed Mens Red White &amp; Black Mountain Bike</b> With Front Suspension
932	1	<b>Tarini TS18 18 Speed Mens Black &amp; Blue Mountain Bike</b> With Front Suspension
933	1	<b>Mens 3 Speed Black Mountain Bike</b> With Adjustable Front Suspension
934	1	<b>Huffy Syntax 18 Speed Womens Blue Mountain Bike</b> With Adjustable Front Suspension, Rear Suspension & Front Disk Brakes
935	1	<b>Challenge Caprice 18 Speed Womens Purple Silver &amp; Pink Mountain Bike</b> With Front Suspension

---

LOT NO	QTY	DETAILS
936	1	Dunlop Alive 18 Speed Womens Pink Road Bike
937	1	Mambo Cruiser Style Single Speed Blue Bike
938	1	Scorpio 21 Speed Mens Grey Road Bike
939	1	Kent Rock Mountain 18 Speed Mens Blue & Black Mountain Bike With Dual Suspension
940	1	Cyclops Ladies Pink Cruiser Incl. Spare Seat, With Mud Guards
941	1	GT Aggressor 21 Speed Mens White & Blue Mountain Bike With Front Suspension
942	1	Dunlop Armour 6 Speed Mens White & Blue Road Bike
943	1	Giant Signature 150 Yukon 7 Speed Mens Orange Racing Bike
944	1	Malvern Star Octane 18 Speed Mens Silver & Blue Mountain Bike With Front Suspension
945	1	Huffy Banten 18 Speed Mens Black Blue & Silver Mountain Bike With Front Suspension
946	1	Rand Rock Mountain 21 Speed Mens Orange & Black Mountain Bike With Dual Suspension
947	1	Repco Single Speed Girls Pink BMX
948	1	Alpha Trek 7300FX 24 Speed Mens Blue & Silver Mountain Bike With Adjustable Front Suspension
949	1	Gary Fisher Tiburon 21 Speed Mens Blue & Silver Road Bike
950	1	Huffy Crater Black & Green BMX With Front Stunt Pegs
951	1	Triax Crimson 21 Speed Mens Red & Silver Racing Bike
952	1	Cyclops Tundra 21 Speed Mens Black Silver & Blue Mountain Bike With Front & Rear Suspension, Note: Missing Front Wheel
953	1	Shogun Trail Breaker 18 Speed Mens Blue Mountain Bike Note: Missing Front Wheel

# **IMPORTANT NOTICE**

## **Electrical Power Tools and Equipment (Inc. electrical leads)**

The electrical articles in this auction have not been proved to be electrically safe. The electrical articles have not been tested by a qualified electrical worker and have not been proved to be electrically safe.

### **General advice on how to use second-hand electrical power tools and equipment (including electrical leads) safely**

**General safe use** advice for electrical power tools and equipment etc. intended for use with rated voltage of not more than 250V for single phase appliances and 480V for other appliances.

This advice is not intended to replace specific manufacturer's information but can be used as a general guide.

This advice does not cater for young children or people who are physically weak.

You are urged to:

- Use the power tool only for its intended purpose.
- If the power tool is for indoor use only, do not use outdoors.
- Do not immerse the power tool in water unless it is designed for this purpose.
- Keep hands, fingers, feet, toes and hair away from dangerous moving parts, cutting blades and the like.
- Do not use electrical power tools in the rain.
- Make sure you have dry hands when operating an electrical power tool.
- Do not use a damaged power tool.
- A power tool may not be intended for use by children or people with an illness or disability without supervision.
- Young children should not be allowed to play with the power tool.
- Some power tools require special precautions for installation or user maintenance or both.
- The plug must be removed from the socket-outlet before any cleaning or maintenance is done.
- Do not place cord extension sockets or portable power outlet boards where they may be splashed or where moisture may get in.
- Ensure ventilation holes or outlets are not blocked or partially obstructed.
- If a fixed power tool does not have a supply cord and plug or other means for disconnection from the supply, a means for disconnection must be incorporated into the fixed wiring according to the Wiring Rules.
- If the supply cord or plug is damaged:
  - The manufacturer or its service agent or a similarly qualified person must replace the cord to prevent an accident.
  - Power tools with specially prepared cords must be replaced by a special cord or assembly available from the manufacturer or its service agent.
  - Other power tools that have a supply cord that cannot be replaced should be scrapped.
- The power tool should be maintained in order to ensure a long, useful life and to protect the operator against electric shock or mechanical mishaps.
- A safety switch can enhance electrical safety when using electrical power tools.