

FIRST PRESBYTERIAN CHURCH

ISSUE NUMBER 186, JAN., FEB., MARCH 2016

FIRST NEWS

TRANSFORMING LIVES THROUGH THE LOVE OF JESUS CHRIST

TRANSFORMING LIVES
THROUGH STUDY CONNECTION
PAGE 2

FEATURED EVENTS AT
FIRST PRES
PAGE 6

REFLECTIONS ON THE
MARRIAGE COURSE
PAGE 11

LEARN MORE AT:
firstpres-fw.org

FIRST PRESBYTERIAN CHURCH
FORT WAYNE, INDIANA



TRANSFORMING LIVES THROUGH STUDY CONNECTION

By Kathy Adair

Study Connection is a group of adults who tutor children from the Fort Wayne Community Schools once per week. This year we are partnered with South Wayne. In the second year of our involvement with the program, I was hesitant to make the claim that we are “transforming lives” through this program. The phrase sounds somewhat presumptuous for our small group of eleven tutors trying to make a difference with their students one hour at a time. Upon reflection, however, I began to see transformation as an ongoing process, a series of small steps rather than some major metamorphosis; and I can attest that we are at least steadily touching the lives of these children in a positive way.

Study Connection is a tutoring program under the auspices of Fort Wayne Community Schools in partnership with various businesses and churches. The idea was originally the inspiration of Don Wolf, former CEO and President of Do It Best; and the program has grown to include dozens of community partners. Students identified by their teachers as needing extra academic assistance are paired with tutors who meet with them once a week for one hour -- hence the expression, “the power of an hour.”



PARTNERSHIP
At First Presbyterian, we partnered with Weisser Park Elementary last year; and this year we are tutoring students from South Wayne Elementary. Each Monday, students arrive on the Study Connection bus and join their assigned tutors for an hour of sharing, math, and, most importantly, reading practice. Their enthusiasm is obvious as

they make their way to McKay Hall, choose a snack, and expectantly search out their tutors.

Though some of our eleven tutors have been teachers, none of us are reading specialists; and several have experienced frustration with not having the expertise to jumpstart a non-reader. What we can do is to model reading in what is called “partnered reading” and simply give students some one-on-one reading practice. This is especially important for our third-graders, who must pass the IREAD test before moving on to fourth grade. After at least twenty minutes of reading, we can work on math concepts, spelling, or other areas of study suggested by the students’ teachers.

DEVELOPING TRUST
Mixed in with the academics are conversations, often student-initiated, about activities, feelings, or concerns. Trust develops quickly between student and tutor; and some sad stories are shared, surprisingly matter-of-factly and without any expectations of sympathy. In the course of reading stories, tutors

also become aware of some deficits in their students’ cultural knowledge: What does it mean to “set a table”? What is a placemat, or a sleeping bag, a cardinal, or a dentist? Limited life experiences hinder both reading comprehension and success on standardized tests, making these sorts of conversations all the more important.

Although we have enjoyed the company of many well-behaved and grateful students, there have been a few who would try the patience of Job. However, tutors who feel frustrated and unappreciated by unfocused or recalcitrant students usually come to the realization that these are the very children who need us most. The strides that we wish we were making weekly might be reduced to simply being a stable presence in a child’s life. We might have to be satisfied with making a caring connection rather than a percentage increase on the ISTEP.

TRANSFORMING LIVES
I have been continually touched by the relationships that I’ve seen develop between tutors and students, often involving affection and mutual respect. I see students anxious to please, to be polite and appropriate and helpful. If you were to walk around the room on any given Monday, you would hear the encouraging words, warm praise, interested questioning, and patient coaching of these dedicated tutors. Transforming lives? I would say so, and, conversely, being transformed along the way by each of these children of God.



HAPPY NEW YEAR!

By Jeff Lehn



What will 2016 bring? The only thing we can be sure about is it will bring change. Some changes will be expected, even welcomed. Others will come out of left field. Some will bless us. Others will harm us. Some we will manage and control. Others we will feel helpless to influence. But the fact is change is hard for all of us.

It reminds me of a lovely line from Mark Twain: “The only person who likes change is a baby with a wet diaper.” How true! As a new father, I’ve become quite familiar with this.

Speaking of changing clothes, I’ve been pondering a little snippet of Paul’s letter to the ancient church in Colossae lately. In the middle of the letter, he writes, “Clothe yourselves with compassion, kindness, humility, gentleness and

patience.” (Colossians 3:12). It’s an odd way of putting it, isn’t it? We don’t often think of putting Christian virtues on like clothing.

The backstory is the city of Colossae was a major hub for clothing manufacturing in the first-century, so Paul cleverly borrows the economic language they know so well to make his point. They ought to “clothe themselves” not just with the t-shirts and jeans they manufacture, but with “compassion, kindness, humility, gentleness and patience.”

Isn’t it a beautiful image for us to ponder? Every morning, in addition to putting on our regular clothes, we are to put on the garments of compassion, kindness, humility, gentleness and patience. It would profoundly change how we interact with others and ourselves throughout the day.

This is a change we can control in 2016. What will we clothe ourselves with each morning? Compassion or judgment? Kindness or fear? Gentleness or bitterness? Humility or self-entitlement?

By God’s grace, the choice is ours. God will be with us in 2016, ready to bring good in the midst of change. But it will go a lot better for us if we put on the right clothing.

Maybe you want to write this Scripture verse on a notecard and tape it to your closet door, so you can pray to put on these Christian virtues as you get dressed each morning. I’ve just done so myself. And I’ve even added a similar notecard to Eden’s changing table, so I can remember to pray for her in the same way.

With lots of hope for 2016,

Jeff Lehn

SCRIPTURE & PREACHING SCHEDULE	
JANUARY	
3	Rev. Jeff Lehn, <i>Ephesians 3:1-12</i>
10	Rev. L. Sherwood, <i>Confirmation Sunday (Baptism Renewal)</i>
17	Rev. Jeff Lehn, <i>John 2:1-11</i>
24	Rev. Jeff Lehn, <i>Nehemiah 8:1-3, 5-6, 8-10</i>
31	Rev. Jeff Lehn, <i>1 Corinthians 13:1-13</i>
FEBRUARY	
7	Rev. Jeff Lehn, <i>2 Corinthians 3:12-4:1 (Annual Meeting)</i>
10	Ash Wednesday, 7 p.m. (<i>Sanctuary</i>)
14	Rev. Jeff Lehn, <i>Deuteronomy 26:1-11</i>
21	Rev. Laura Sherwood, <i>Psalms 27</i>
28	Rev. Jeff Lehn, <i>Psalms 63:1-8</i>
MARCH	
6	Rev. Laura Sherwood, <i>Luke 15:1-3; 11b-32</i>
13	Rev. Jeff Lehn, <i>Philippians 3:4b-14</i>
20	Rev. Jeff Lehn, <i>Luke 19:28-40 (Palm Sunday)</i>
24	Maundy Thursday, 7 p.m. (<i>Sanctuary</i>)
25	Good Friday
27	Rev. Jeff Lehn, <i>Luke 24:1-12 (Easter Sunday)</i>

PASTOR-ON-CALL SCHEDULE	
JANUARY	
4	Pastor Laura
11	Pastor Laura
18	Rev. Lehn
25	Rev. An
FEBRUARY	
1	Rev. Lehn
8	Pastor Laura
15	Rev. An
22	Rev. Lehn
29	Pastor Laura
MARCH	
7	Rev. An
14	Rev. Lehn
21	Pastor Laura
28	Rev. An

FIRST NEWS MAKEOVER: PLEASE PROVIDE YOUR FEEDBACK

We hope you enjoy this “makeover” of *FirstNews*. Due to the variety of communication tools (weekly e-news, bulletin, *Get Connected* booklet, website), *FirstNews* has evolved its focus. The newsletter will arrive quarterly and, while it will still contain program details, the communication objectives are:

- to share stories of transformation and ways for you to be transformed
- to help you get to know your church family
- to assist you in finding ways to get connected and grow your faith
- to serve as a communication tool and an invitation for those outside the church to better understand what we’re all about

Please provide feedback and let us know if we missed something that you think should be included. If you would like to see something that we haven’t covered, please share your thoughts. This is your newsletter, and the goal is to make it a useful tool for you to learn and get connected with your church, so please help us make it useful to you. Submit information to codle@firstpres-fw.org.

Communication Committee

LOOK, HERE, HAVE YOU TRIED IT?

By Dr. Rev. Youngsoo An, Translated by Antoinette Lee



It is easy to draw negative results based upon our life experiences without actually attempting to try and see how it will all work out. We tend to make excuses such as, “I’ve done this before and couldn’t do it, so I know I can’t do it now” and “What should I do if it goes wrong?” which are obstacles we are building against ourselves. More than just obstacles, these negative concepts prevent us from receiving all the blessings that God has given to us. We need to be cautious and fearful toward real danger, but the combination of excessive fear and negative perspectives will turn us away from enjoying the blessings which God intended for us to have.

In 2016, I would like to encourage our members to memorize Bible verses. Memorizing Bible verses has many benefits, but most importantly, it opens our eyes and ears to God’s blessings that teach us to rid ourselves of fear and eventually give us the power to submerge ourselves into the sea of His blessings.

We can easily understand this when we read Joshua. God gave the leader of Israel, Joshua, the power of memorizing Bible verses after Moses died. Joshua 1:6, 8 says, “Be strong and courageous because you will lead these people to inherit the land I swore I would give to their forefathers. Do not let this Book of the Law depart from your mouth; meditate on it day and night, so that you may be careful to do everything written in it. Then you will be prosperous and successful.”

We can imagine Joshua must have felt fearful and apprehensive after succeeding a great leader like Moses. We must remember that God told Joshua to memorize Bible verses and meditate as ways to become stronger. Memorizing Bible verses has the power to eliminate fear.

I wonder if some of you are not quite convinced that simply memorizing Bible verses will get rid of fear, but I would like to emphasize again that the Bible has God’s wisdom. The Bible contains all of His wisdom beyond yours and mine. If there is any fear that you just cannot shake off, the only way to do it is by relying on the almighty power of God’s wisdom. I bless all of you to be in the sea of God’s blessings that He has prepared for us from the beginning and to eternity.

I would like to tell you a story of a great Korean man, the first Chairman of Hyundai Group, Jung Jooyoung. He was one of the few who almost singlehandedly led Korea from a small, poor country to one of the most prosperous and industrialized countries in modern history. Korea recently celebrated his 100th birthday. It was said that in just about every meeting, Jung Jooyoung was very aggressive, to the point where he scared his executives with reckless and daring business plans. Sometimes, when his executive

members pleaded with him that his ideas were simply impossible, he would challenge them by saying, “Look, here, have you tried it?” My dear fellow First Presbyterians, how about it? Let’s try.

Your Happy Minister, Young Soo An

“이보, 해봤어?”

우리가 인생을 살아가다보면 해보지도 않고 부정적으로 생각할 때가 많이 있습니다. “이건 안될꺼야”, “전에도 해 봤는데, 안되었어. 그러니 이번에도 안될꺼야” 라던지 “이것하다가 잘못되면 어떻게 하나”라는 식의 두려움은 우리에게 많은 불이익을 가져다 줍니다. 그중에 가장 중요한 것은 바로 우리로 하여금 하나님께서 베풀어 주시는 은혜를 누리지 못하게 한다는 것입니다. 물론 바람직한 두려움도 있겠으나 대부분의 두려움은 실제로 없는 염려와 걱정을 만들어내어 결국 우리로 하여금 하나님의 은혜를 경험하지 못하게 만드는 폐해를 초래하는 것입니다.

저는 2016 년도에 우리 교회가 가야할 여러가지 사역 중에 성경 암송 사역에 중점을 두려고 합니다. 성경 암송이 갖는 여러가지 장점이 있습니다마는 그중에 성경 암송은 우리의마음 속에 자리 잡고 있는 두려움을 제거하고, 그 결과 우리로 하여금 하나님이 주시는 풍성한 은혜의 바다에 잠길수 있게 하는 능력이 있기 때문입니다. 이점은 여호수아서를 읽어 보면 쉽게 이해가 됩니다. 모세가 죽은 후에 모세의 뒤를 이어 받은 이스라엘의 지도자 여호수아에게 하나님이 주신 말씀이 바로 성경 암송의 능력이었습니다.

“강하고 담대하라... 이 율법책을 네 입에서 떠나지 말게 하며 주아로 그것을 묵상하여 그 안에 기록된대로 다 지켜 행하라. 그리하면 네 길이 평탄하게 될 것이며 네가 형통하리라” (여호수아 1:6 절 전반부. 8 절)

위대한 지도자 모세의 뒤를 이은 여호수아는 분명히 마음 속에 두려움이 있었을 것입니다. 그 두려움을 제거하는 방법으로 하나님께서 모세에게 말씀 암송과 묵상을 제시한 것에 주목해야 합니다. 이것은

바로 두려움을 제거하는 탁월한 능력이 말씀 암송에 있다는 것을 말씀하시는 것입니다.

문제 해결에 대한 대책으로 왠지 어색하다는 느낌을 받으실 분이 계실지도 모르겠습니다. 하지만, 성경은 하나님의 지혜가 담겨 있는 책입니다. 나의 지혜와 나의 경험을 넘어서는 하나님의 경륜이 우리를 향하여 말씀하고 계신 책이 바로 성경 말씀입니다. 그러니 성도 여러분, 마음 속에 남아서 도저히 떠나지 않는 우리의 두려움을 하나님의 말씀으로 제거합시다. 그리고 새로운 한해에는 하나님께서 준비해 두신 풍성한 은혜의 바다에 꼭 잠기는 한 해가 되기를 축복합니다.

마지막으로 이 글을 읽으면서 혹시 마음에 확신이 안생기는 분을 위해 다음의 이야기를 들려 드리며 저의 글을 마치고자 합니다.

얼마전 현대 그룹의 창업자였던 고 정주영 회장의 100 주기 생일이 있었습니다. 한국 역사와 정치에 여러가지 영향을 미쳤던 고인이지만, 한가지 제가 정주영 회장의 이야기 중에 꼭 나누고 싶은 것이 있습니다.

정주영 회장은 직원들과 회의를 할 때마다 아주 공격적이고, 때로는 무모한 사업 계획을 내세울 때가 많았다고 합니다. 직원들이 “회장님, 이건 너무 무모합니다. 도저히 불가능한 계획이라고 생각이 되니 한번만 더 생각을 해 주십시오”라고 이야기하면, 정회장이 늘 하는 이야기가 있었습니다.

“이보, 해 봤어?”

사랑하는 성도 여러분, 어때세요. 한번 해 봅시다.

행복한 목사

안영수 목사드림

DISCOVERY PROCESS EXTENDS TO CHILDREN, YOUTH, and FAMILY MINISTRY

By Pastor Laura Sherwood (PL)



With the leadership change in Children, Youth and Family Ministry (CYF), the Pastors, Personnel Committee and Session thought it would be a good time to look at all the aspects of this ministry before searching for a replacement. For the next 3-4 months I will take on the primary leadership for CYF Ministry and work with all the families to make sure we are covering what’s needed. I will coordinate the teaching and caregiving needs for Sunday school and Nursery and work with the Youth Group. We may discover a desire to have this ministry be part of the next installed Associate Pastor’s Call and, at the least, be able to work with the families and youth to discern what would make the best match for leadership moving forward. As a part of that process we are inviting all families, youth and other members who would like, to be a part of the planning for the immediate and long-term future. An open meeting is scheduled for Wednesday, January 6th, 6-7:00 p.m. with pizza and childcare provided. We

hope parents and youth will participate in the discussion to give their best hopes and ideas for the Youth Program and our offerings for younger children. Since we are taking this extra time at the beginning of the year to explore the possibilities for Children and Youth ministry in relation to the next Associate Pastor Call, formation of an AP Search Committee will necessarily be postponed until after Easter. In addition, to help free up time in my scheduled work, we are planning to hire a local Presbyterian clergy person on a contract basis to cover 8-10 hours of pastoral care per week during this same time period. When that person is known, a congregational notice will go out. Please feel free to email me, Pastor Laura, (lsherwood@firstpres-fw.org) any questions or ideas you have about this new Discovery aspect and/or if you can help over the next 3-4 months with our additional need for Sunday school teachers and nursery volunteers. Thank you!!

A TRIBUTE TO JENNIFER SHAW

By Luci Foltz

I was surprised to discover, in looking over some past information, that Jennifer had only been helping with First Pres Sunday School since 2010, and then Director of Children, Youth and Family Programs since 2012. She has had such an impact on the programs here that it seems much longer to me. As chairperson of the Children’s Committee over the last several years, and during my time spent as Communication Editor at FPC, I’ve had lots of opportunities to work with Jennifer so I know first hand what a wonderful job she has done and how difficult she will be to replace. Not only did she swallow the “energizer bunny” somewhere along the way, she is also organized to the “nth degree”. When I took my turn teaching first and second grade Sunday School last year, I was impressed and comforted by the fact that all of the materials I needed were set out, in place, with clear instructions. The same can be said for the last several years of Vacation Bible School. All of the materials for every project and event (even the quick drying concrete) were ready and waiting for those of us who were teachers, shepherds and helpers. I’ve also been impressed with how diligently she searched out really excellent curriculum materials. In addition to all of the children related activities she has overseen -



Christmas pageants, VBS, Sunday School, nursery staffing, Bucket Sunday, family picnics, hospital cheer visits, Wednesday night activities and much more, Jennifer has also had a very positive impact on the size and quality of our Youth program. Sunday School and Sunday evening youth gatherings are firmly in place now. Youth excursions to visit other churches have become a regular occurrence, and last year Jennifer introduced the Mentor program in which each middle school and high school age youth in our congregation is paired with an adult willing to spend time getting to know that student and offering friendship and guidance. Funding for this program had been donated to the church years ago but it took Jennifer to put the plan in action. I recently had the opportunity to talk with a young man who has been active in the Youth Program for three years now and I asked him how he and the other youth feel about Jennifer. He said “She’s down to earth, she gets us, she’s not afraid to be open with us. She’s very nice, easy to talk to, and we don’t feel she’s going to judge us. We feel relaxed around her. She always incorporates a Christian lesson into whatever we do.” and finally “Youth group is not a place I dread going.” I can’t top that. Jennifer, you will be sorely missed but we wish you great joy and success as you go back to teaching. We know your third grade class will love you as much as we do.



2016 LENTEN SEASON: Applying Your Faith to Your Life

By Pastor Laura Sherwood (PL)

During Lent this year (Ash Wednesday is February 10) our worship will incorporate time each week to explore various Spiritual Practices as we contemplate Jesus’ Life and Ministry and reflect on the meaning of the Cross. Over the centuries, people of all faiths have yearned to enrich their experience and understanding of God so that their lives may be a continually growing reflection of God’s love and grace. In our Reformed and Presbyterian Tradition, we see Spiritual Practices as relating to both our internal life of thought and prayer as well as our external life of service and ministry.

Each Sunday in Worship we will take time during the sermon to explore one particular Spiritual Practice – its history, meaning and method - as something we can do together in worship and take with us into our lives the following week. Our hope is that engaging with Spiritual Practices as

a church community and as individuals will provide a way for us to truly walk through all the days of Lent with intention and purpose and deepen our experience of Holy Week and the glory of the Resurrection on Easter Sunday. Some of the Spiritual Practices we will explore are: Breath-Prayer, Acts of Generosity, Guided Meditation or Centering Prayer.



PLEASE ATTEND THE ANNUAL CONGREGATIONAL MEETING, SUNDAY, FEB. 7, 9:30 A.M.

We hope you can join us on February 7 for our annual congregational meeting. A light breakfast will be served at 9:30 a.m. and the meeting begins at 9:45 a.m. There is no 9:00 a.m. Worship Service that day, and the Nursery is open. This meeting is a great time to learn not only about the financial update of the church, but the many ways FPC has transformed lives over the past year. We also announce the winner of the Church and Society Distinguished Service Award, in memory of Elaine I. Wareham. This is a prestigious award given to an individual who best represents Christian leadership and service both in the church and in the community. It’s not too late to nominate someone – just pick up the form at the Church Office and complete by January 10.



John Ruble, 2015 Elaine Wareham award recipient



START CLEANING and COLLECTING FOR THE 2016 GARAGE SALE, APRIL 8 and 9

Garage Sale season is just around the corner and we are gearing up for the Annual FPC Garage Sale the second weekend in April. There are several ways you can participate in this event to help raise money for the mission work of FPC:

Contribute to the Building & Grounds Ministry sale tables. Drop off new, used or unique items to the church office, or lobby coat room tagged ‘garage sale’. Items may include, but not limited to, antiques, furniture, books, tools, even those unwanted white elephant gifts, and more. If you need assistance to move large items contact Bill Patterson, 609-9696, to make arrangements.

Contribute Baked Goods for the Bake Sale. Sign up at the church office if you would like to donate a delicious pastry or goods of any sort.

Volunteer: Set-up, Tear-down, concessions, cashier, welcome tables. To sign up, you can do so at the church office or contact Jiln Jung, jjung@firstpres-fw.org with preference to volunteer.

Rent a table and be your own entrepreneur for a weekend. Set up, sell, and keep your profit. Tables are \$25 each; rental funds are donated to missions of the church and community. Sign-up and make table rental payment at the Church Office. All funds support the Building and Grounds Ministry and various missions within the church and community.

As they say, “one person’s trash is another man’s treasure.” As you start the spring cleaning process, consider bringing your “trash” to FPC!



LEARN TO ENHANCE YOUR FAITH–2016 WINTER/SPRING ADULT EDUCATION PROGRAM

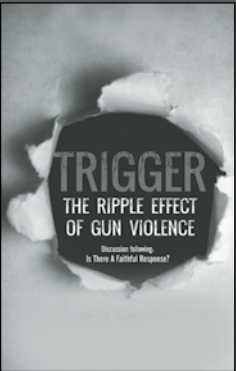
By Rollyn Coverdale, Adult Education Committee Chair

The Winter/Spring 2016 Adult Education Program begins on January 3 for Andrea Amstutz’s class and January 10 for Pastor Laura’s class. We are excited for the schedule that is in place and look forward to seeing you at the 10:00 a.m. education hour (there is childcare for the little ones and choir for ages 4+). Please check the Sunday bulletin and First Pres weekly e-news for specific dates and any changes.

JANUARY

Andrea Amstutz Class
The Present Word: Sacred Gifts and Holy Gatherings (Selected Old and New Testament texts)
Unit I - *What We Bring to God*
Unit II - *Four Weddings and a Funeral*
Unit III - *Holy Days*

Laura Sherwood and Friends Class
TRIGGER: The Ripple Effect of Gun Violence
This is a four week study on gun violence and the church’s response. This study is based on the Presbyterian Church policy statement, “Gun Violence: Mobilizing in Response to God’s Call” and created in an effort to take responsibility to build public awareness of gun violence and the epidemic of preventable gun-related deaths.



FEBRUARY

Andrea Amstutz Class
The Present Word, continued from January

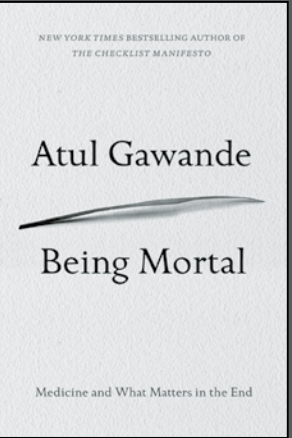
Kathy Beatty Class
Eastern Orthodox Religion
Kathy continues her study of world religions with a four week study on the Eastern Orthodox Church.



MARCH

Andrea Amstutz Class
The Present Word: The Gift of Faith (Mark & Luke)
Unit I - *Tests of Faith*
Unit II - *Restorative Faith*
Unit III - *Fullness in Faith*

Jeff Lehn Class
Being Mortal
Using Atul Gawande’s terrific new book with the same name as our guide, the class will focus on death and dying and how we can prepare ourselves and our loved ones for what matters most at the end of life. We’ll also talk theologically as Christians about our beliefs about death and resurrection and what medicine can learn from our faith.



LOOKING AHEAD TO APRIL

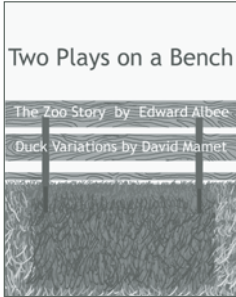
Andrea Amstutz Class, continued (Room 306)

Chelsea Vaught – Mel Bringle Forum, April 10
A Forum on Language in our Hymnal
Mel Bringle was the Chair of the Glory to God hymnal project and has been an advocate of inclusive language in our music used in worship. In addition to preaching, she will be presenting during the 10:00 a.m. Sunday school hour and leading a hymn festival at 2:00 p.m. that day. This is a collaborative event with the Religious Arts committee and the Adult Ed committee. Mark your calendars.

Laura Sherwood & Friends Class
Just Eating? – Starting April 17th
A seven week study that explores the relationship between the way we eat and the way we live, published by the Presbyterian Hunger Program. The study uses scripture, prayer and stories from the local and global community to explore five key aspects of our relationship with food: the health of our bodies, the challenge of hunger, the health of the earth that provides our food, the way we use food to extend hospitality and enrich friendships, and the opportunities for action, renewal and transformation in our eating practices as individuals and as faith communities.

FIRST PRESBYTERIAN THEATER

Thom Hofrichter and Theater Committee



TWO PLAYS ON A BENCH

January 14–30

The Zoo Story by Edward Albee

The Duck Variations by David Mamet

January 14**, 15, 16, 22, 23, 24*, 29, 30

Early in their careers, two of America's greatest playwrights each started with the idea of putting a pair of men on a park bench. And in both cases theatrical brilliance was created. Come witness these remarkable plays. The Duck Variations features Thom Hofrichter.



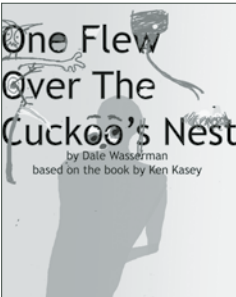
WIT

March 3–19

by Margaret Edson

March 3**, 4, 5, 11, 12, 13*, 18, 19

Winner of the Pulitzer Prize, NY Magazine called it “a dazzling and humane play that you will remember till your dying day.” A renowned English professor (played by Nancy Kartholl) has been diagnosed with terminal cancer. During experimental chemotherapy at a major teaching hospital she reassesses her life and her work with a profundity and humor that are transformative, for her and for us. Starring Nancy Kartholl.



ONE FLEW OVER THE CUCKOO'S NEST

April 21–May 7

by Dale Wasserman based on the

novel by Ken Kesey

April 21**, 22, 23, 29, 30, May 1*, 6, 7

AUDITIONS SUNDAY, FEB. 14 AT 7:00 P.M.

Prepare to read from script. Rehearsals begin March 7.

Needed 13 men and 4 women, all ages.

PERFORMANCE TIMES

Evening shows at 7:30 p.m.

*Sunday matinées at 2 p.m.

**Thursday preview shows,
all seats \$12

Open Seating 30 minutes before curtains

BOX OFFICE HOURS

W, Th, F; 11 a.m.–2 p.m.

One hour prior to performance

TICKET INFORMATION

firstpresbyteriantheater.com

Box Office Telephone:

260-426-7421 x121

Save the Date! Now Taking Reservations

STRATFORD THEATER TOUR, JUNE 24-26, 2016

Join Thom Hofrichter and fellow theater enthusiasts for at 3 day trip to the Stratford Festival in Canada. Visit www.stratfordfestival.ca for more details on shows!

General Cost per person is:

\$950 single

\$750 double

\$675 triple

\$650 quad

Call or email Thom to secure your reservation now! 426-7421 ext. 103 or thofrichter@firstpres-fw.org

ART GALLERY

Patty Griest, Carolyn Krebs and Gallery Committee

JANUARY 15–FEBRUARY 21

Ann Johnson (F.B.Fogg)—Paintings and Paper mache

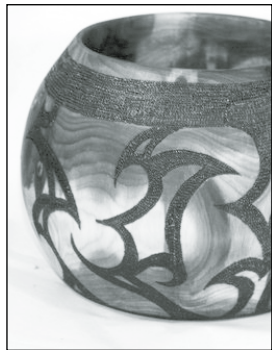
William Steffen—Wood works

Meet the Artists public reception, Friday, January 15, 5:30 – 7:00 p.m.

Congregational Reception, Sunday, January 31, 12:15 – 1:30 p.m.



Ann Johnson: Known by many only as “F.B. Fogg,” a name derived from a favorite childhood story. Ann Johnson is the creator of winsome animals sculpted from handmade paper. Ann comments, “We are such savers of things. Giving value to everything we hold onto: long forgotten love notes, . . . a photo of a long lost pet—these all advertise that our own lives are infinitely precious. Treasures from which I fashion my paintings, for losing, even a little bit of these, threatens my own accountability.” Her medium of choice at present is oil on canvas. Johnson’s accomplishments are far ranging, not only as a renowned artist in various media whose works appear in many museums, galleries and collections with multiple awards and honors, but also as a teacher, businesswoman, board member.



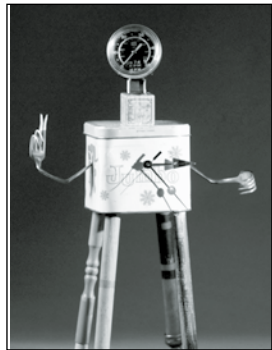
William Steffen: Bill’s introduction to woodworking came in his sixth grade shop class when he decided his first project would be to make an electric guitar. His teacher said he must make it all from rough-cut lumber. Bill agreed and comments, “This project taught me how to shape wood by feel, not by sight.” When asked what inspires him and keeps him interested in woodworking, he replied, “Trees. Trying to guess what stresses cause some of the beautiful grain patterns from one to the next...finding the beauty in a flaw is what I like best, and luckily for me, there are beautiful flaws everywhere, if they are treated right.” Steffen treats those flaws “right,” revealing extraordinary combinations of colors, shapes and textures bringing out the natural beauty of the woods in imaginative forms.

FEBRUARY 26–APRIL 10

Tim Parsley—paintings and collage/assemblage

Meet the Artist public reception, Friday, March 4, 5:30 – 7:00 p.m.

Congregational Reception, Sunday, March 6, 12:15 – 1:30 p.m.



Assistant Professor and Program Director of Studio Art at the University of Saint Francis, Tim Parsley has earned several degrees. In addition to his BFA and MFA, he holds degrees in biblical and ministry studies. He spent 13 years as a congregational minister before pursuing a career as a visual artist. Tim states of his work, “My work navigates American history and the complicated effect of its constructive ambition. With a focus on the originating stories of America, I appropriate and piece together scraps of historic imagery and collective memory, reconstructing the American narrative of progress that was a dichotomous and implicating mixture of hope, pride, destruction, and dominance culminating in a conflicted national history.” His paintings and collages reveal and reinterpret these conflicting themes that continue to play out the same drama in our individual lives. Parsley has

exhibited nationally and internationally. He and his wife, Flora, have four children.

LOOKING AHEAD: APRIL 15–JUNE 5

Tossed and Found, An invitational exhibition of Recycled/Repurposed/Reimagined Art

Co-sponsored by FPC Earth Care Ministry and Interfaith Earth Care Coalition

Public Reception: Friday, April 22, 5:00–7:00 p.m.

MUSIC PROGRAM

Chelsea Vaught and Music Committee

INDIANA MUSIC EDUCATION ASSOCIATION (IMEA) CONFERENCE–JANUARY 15 & 16

First Presbyterian will once again be hosting performing groups from around the state of Indiana as part of the IMEA conference held in Fort Wayne in January. Each concert is open to the public to attend. The schedule is as follows:

FRIDAY, JANUARY 15

12:15 p.m.

Zionsville Boys Choir

2:45 p.m.

Ball State University Concert Choir

4:30 p.m.

Clay Middle School Orchestra

SATURDAY, JANUARY 16

9:15 a.m.

Notre Dame Children’s Choir

11:15 a.m.

Indianapolis Children’s Choir: IYC/Bel Canto

DONATIONS FOR EASTER BRASS QUINTET

During the season of Lent, beginning February 10, donations will be accepted to help with the cost of the Easter Brass quintet which enhances our Easter Worship Service. Donations need to be in by Palm Sunday, March 20 in order to be listed in the March 27 Easter Bulletin. You may leave your contribution in the offering plate on Sunday morning or drop it off at the Financial Office during the week. If you are giving the contribution in honor or memory of a loved one, please be sure to include that information with your donation. Thank you in advance for your generosity and assistance to help make Easter a memorable worship service!



NEXT UP IN THE MUSIC SERIES:

National Organ Playing Competition

Saturday, March 19, 2016; 1 p.m, Church Sanctuary



The First Presbyterian National Organ Competition began in 1960 and is the longest running national organ competition in the United States. Join us this year to hear four talented young organists (under age 35) compete for two cash prizes. The competitors will be playing three pieces, a Trio Sonata by Johann Sebastian Bach, a Romantic piece by a composer born between 1800 and 1902 and a contemporary piece written by a composer born after 1903. Three prominent organists from around the United States will judge the final competition on March 19. The goal when the competition began was “to bring encouragement and public attention to the many fine young organists in the nation” which is still relevant today. Come and support these fantastic young organists!

2016 GOALS: SECURITY ENHANCEMENTS AND CONTINUED GROWTH

By Marj Sapp, Day School Director

Happy New Year 2016! The Day School had a very busy end to 2015 with a Thanksgiving songfest for Presby Day and a wonderful Christmas Pageant for family and friends. A visit from Mr. and Mrs. Claus capped off a great morning of Christmas celebration.

Thank you to all who have supported the Day School in the past year. Your generosity has helped to make the Little Free Library an ongoing success. Your contributions to the scholarship fund have helped us to ease the burden of tuition costs for some of our families. Your time, talents and purchases through the cookie baking event for Johnny Appleseed Festival and the Cookie Dough Sale have provided enough funds to cover the required professional training for the Day School staff in the coming year.

We are looking forward to a very busy and exciting 2016. The Day School has been blessed with grant money that will allow us to put security doors at both ends of the first and second floors where the day school classrooms are located. The doors will provide greater security for our children and staff and reassurance for our families that their children are in a protected environment.

We will also host a Scholastic Book Fair for a week at the end of February. Look for more information on this event in the coming weeks.



FPC SCHOLARSHIP OPPORTUNITIES NOW AVAILABLE

Contact Michelle Adams, Finance Office, madams@firstpres-fw.org

The 2016 competition for First Presbyterian scholarships is now open. Scholarships in the amount of \$1,000 are made available to qualifying members and children of members to provide financial assistance in pursuit of post-secondary education.

Scholarship recipients may be of any age, as long as they are taking degree-directed courses.

If interested, contact Michelle Adams in the Financial Office for more information and an application. Completed applications, along with an essay, a listing of church participation and activities, and a cumulative high school or college transcript are due April 1.

HANDS-ON MISSION OPPORTUNITY: JUST NEIGHBORS, January 10–15

Just Neighbors is a local non for profit whose mission is to serve homeless families by uniting faith community volunteers and local agencies in a cooperative effort to provide shelter, meals, and comprehensive, compassionate ongoing support. We at First Pres are a committed faith partner with Just Neighbors.

The week beginning Sunday, January 10, First Presbyterian has committed to cooking and serving dinner to guests currently residing at Just Neighbors (housing those who are temporarily homeless). Typically, there are 30 to 40 guests at any one time. We will know by the beginning of the week how many are in residence. You, and your fellow dinner preparers deliver

your dish to the shelter about 5 p.m., and serve the guests. We would love to have your help, and can work with whatever limitations or difficulties you might have. This is a very tangible way FPC can reach out and transform lives for those facing difficult time in our own city!

We invite you to join us in this mission – here are the details:

- 1. There will be sign-up sheets posted on a bulletin board in the small dining room beginning shortly after Christmas.
- 2. Find an evening that works for you; decide which part of the meal you wish to provide or choose to prepare the entire meal; sign up.
- 3. It's that easy!

THANK YOU ANGEL TREE VOLUNTEERS, SUPPORTERS, AND FRIENDS

The Angel Tree team would like to say **thank you** to all who generously gave of their time, money, and gifts to make the 2015 Angel Tree a huge success. We were able to provide clothing and toys for all of our families in need. We greatly appreciate the remarkable effort that our congregation makes each

year to make certain that all of our Angels have Christmas gifts. Please contact Janice Roddy or Beth Marks if you have any questions regarding the annual Angel Tree activities or if you would like to join the 2016 Angel Tree team.

REFLECTING ON FPC’S “THE MARRIAGE COURSE”

By Sinyoung Park

Daniel and I have been married for 8 months. Once we were married, we learned we didn’t know each other very well, even though we dated for 3 years, and we needed some advice and information to be a better husband and wife. In addition, we needed to be a better Christian couple, because we were two different people with different characteristics, backgrounds, even cultures. In that period, we discovered the marriage course that was held in the church over the fall. We were able to take a great opportunity to take this course with three other couples over the course of 6 weeks.

In the course, we learned a lot of things about each other; how to communicate, resolve conflict, forgive each other, and show actions to show our love. Love in action was the strongest topic for me, since I had very limited information on my husband’s and my love language and how they are different. My husband’s love language is loving words and my love language is kind actions. For instance, I am not good at expressing my affection and love with my words at all, so sometimes he can’t feel my love even though I show my love with kind actions. Through this section, I recognized that I keep

showing love in my way, so sometimes, he can’t feel my love and vice versa.

I felt it was a great course that helped us not only learn more about each other, but also make our marriage stronger. Although I can’t say we are a perfect couple after this course, I feel we are knowing and loving each other more and more. It is possible because we try to accept each other, love just the way each other is, and trust God’s promise for our marriage above all.



MEETING YOUR NEEDS AT FPC

Please review the information below for the various contacts to help better meet your needs at FPC. If there is additional information you would like to see included, please let us know.

- ❖ If you have a prayer request, please call Joan Jackson, 486-4828.
- ❖ Audio Copies of Recent Sermons are available on our website, **www.firstpres-fw.org**. Go to Media & Resources / Latest Sermons.
- ❖ Printed Copies of most Sermons are available via the church office.
- ❖ Let us Celebrate with You! If you would like to allow our church family to rejoice with you about a landmark anniversary or birthday, please send the information to Cindi Odle.
- ❖ Welcome Baby Ministry. If you are pregnant or adopting, please contact Cindi Odle, so that we can welcome your baby with gifts, a bible and three home cooked meals.
- ❖ FPC clergy are off on Mondays, with the pastor on call being available for emergencies.
- ❖ First Hope, a suicide bereavement group meets the second Sunday of each month, 1:00pm, third floor prayer room. Anyone whose life has been touched by suicide is welcome to attend. Please contact Lea Ann Powers: **260-484-0141**, or Lou Brickman: **222-2222**

- ❖ SMOCK, is our Seniors group and includes 3B fitness on M,W & F at 1:30 p.m. as well as Presby Day, Jan 21, Feb 18 and March 17.
- ❖ Faith Friend Zip Code Dinners: 46815 meets on the second Monday, 5 p.m. in Jan./Feb. and 6 p.m. in March, Halls Triangle Park; 46804 & 46814 meet on the second Sunday 5:30 p.m.; Halls Coventry and 46805 and 46835 also meet on the second Sunday, 5:30 p.m. Halls Triangle Park.
- ❖ Monthly Food Drive and the Rescue Mission meal take place on the third Thursday of the month.
- ❖ Everyone a Neighbor Day (for homeless in the city) takes place the fourth Thursday of the month.

WELCOME OUR NEW CONFIRMANDS JANUARY 10 and 17



We are so excited to welcome a new confirmation class this year. Please join us January 10, at the 11:00 a.m. service to welcome the new confirmands. This service will include Baptism Renewal. And on January

17, the KLM confirmands will be recognized at the 11:00 a.m. KLM service followed by lunch and reception in Fellowship Hall

STAY CONNECTED TO FPC VIA TEXT MESSAGING

You can receive messages about church cancellations or group events within our church. (Children, Youth, and Families Ministry, KLM Ministry, Day School Ministry, etc.) You choose which groups within the church you want to hear from.



SIGN UP TODAY!

- 1. Go to wbcl.org
- 2. Click the **Sign Up** button
- 3. Click the **text alert sign-up**
- 4. Click on **church cancellations/info** (see a variety of First Pres options)

A NEW CALENDAR FORMAT

FirstNews features a new calendar format. We’ve had several requests for this type of document. The monthly calendar will include special Sunday worship info, monthly meetings, arts ministries, and special events. We would like to include everything, but just don’t have the space (for the future we are looking at updating our scheduling software in 2016 that would include online calendar access). In addition, the times of these events as well as many weekly events can be found other places (website, bulletin, church office, e-news). Let us know if you like this new format, and how we can continue to make it a useful tool for you and your family. Also, if we have missed something that you think should be included based on the described type of info, please let us know.

JANUARY 2016

SUNDAY	MONDAY	TUESDAY	WEDNESDAY	THURSDAY	FRIDAY	SATURDAY
					<i>New Year’s Day! Happy New Year! Church Building Closed</i>	
					1	2
<i>Communion Sunday (see website/e-news for times)</i>		<i>MOPS (Mother’s of Preschoolers)</i>	<i>Children, Youth & Family Parent Meeting</i>			
3	4	5	6	7	8	9
<i>Sunday Worship First Hope, Pick up your grocery bag for food pantry</i>		<i>Session Meeting</i>	<i>FPC Focus Group 1</i>	<i>Theater Preview Two Plays on a Bench</i>	<i>Gallery Reception Theater Performance</i>	<i>Theater Performance</i>
10	11	12	13	14	15	16
<i>Mission Sunday Food Collection & Rescue Mission Meal Bucket Sunday</i>	<i>Martin Luther King Jr. Day Day School Closed</i>	<i>MOPS (Mother’s of Preschoolers)</i>		<i>SMOCK Presby Day</i>	<i>Theater Performance</i>	<i>Theater Performance</i>
17	18	19	20	21	22	23
<i>Sunday Worship Theater Matinee</i>				<i>Everyone a Neighbor Day (END) Foundation Meeting</i>	<i>Theater Performance</i>	<i>Theater Performance Kroozin’ Winterval Event</i>
24	25	26	27	28	29	30
<i>Sunday Worship Congregational Gallery Reception</i>						
31						

FEBRUARY 2016

SUNDAY	MONDAY	TUESDAY	WEDNESDAY	THURSDAY	FRIDAY	SATURDAY
		<i>MOPS (Mother’s of Preschoolers)</i>				
	1	2	3	4	5	6
<i>Worship – Annual Meeting, 9:30 a.m. Souper Bowl Sunday</i>		<i>Session Meeting</i>	<i>Ash Wednesday Service, 7:00 p.m</i>			
7	8	9	10	11	12	13
<i>1st Sunday of Lent First Hope, Pick up your grocery bag for food pantry</i>		<i>Board of Deacons MOPS (Mother’s of Preschoolers)</i>		<i>SMOCK Ministry Presby-Day</i>		
14	15	16	17	18	19	20
<i>2nd Sunday of Lent Mission Sunday Bucket Sunday</i>				<i>Everyone a Neighbor Day (END)</i>		
21	22	23	24	25	26	27
<i>3rd Sunday of Lent</i>						
28	29					

MARCH 2016

SUNDAY	MONDAY	TUESDAY	WEDNESDAY	THURSDAY	FRIDAY	SATURDAY
		<i>MOPS (Mother’s of Preschoolers)</i>		<i>Theater Preview– “Wit”</i>	<i>Meet the Artists Gallery Reception Theater Performance</i>	<i>Theater Performance</i>
		1	2	3	4	5
<i>4th Sunday of Lent Congregational Gallery Reception</i>		<i>Session Meeting</i>			<i>Theater Performance</i>	<i>Theater Performance</i>
6	7	8	9	10	11	12
<i>5th Sunday of Lent First Hope, Mission, Daylight Savings Time Begins, Theater Matinee</i>		<i>MOPS (Mother’s of Preschoolers)</i>		<i>SMOCK – Presby Day</i>	<i>Theater Performance</i>	<i>National Organ Playing Competition Theater Performance</i>
13	14	15	16	17	18	19
<i>Palm Sunday Bake Sale, Food Collection & Rescue Mission Meal</i>				<i>Maundy Thursday M/T Service, 7:00 p.m. Everyone a Neighbor Day (END)</i>		
20	21	22	23	24	25	26
<i>Easter Sunday, Sunrise Service, 7:30 a.m. Easter Egg Hunt, 10:15 a.m.</i>			<i>Whitewater Valley Presbytery Committee on Ministry</i>			
27	28	29	30	31		

YOUR SESSION

HIGHLIGHTS FROM THE NOVEMBER AND DECEMBER SESSION MEETINGS

Jean Linville, Clerk of Session

All Session meetings begin with a light supper, sharing of joys and concerns and devotions led by the Elders of the Month. Note: MP means was Motioned and Approved.

NOVEMBER 10, 2015

Discovery Update: Rev. Sherwood gave a report on the “Discovery Process.” She noted stressors for our pastors including the several staff changes, their role in staff supervision, evaluations, interviews, leadership, and team building. Determining the difference between need and expectations for the staff and congregation is ongoing.

Committee Testimony: Personnel provided copies of the new “Maternity and Paternity Leave Policy for Staff Members (excluding clergy). (MP) Religious Arts Committee moved the approval of Harriett Inskeep and Marsha Heller as new members. (MP) The Finance Committee announced the resignation of two committee members, Bill Easterly and Geoff Paddock. Elder Jim Ehlich moved that the Session direct the Budget Committee to come back to Session with a 2016 budget with zero deficit, that is the planned expenses subtracted from the planned income equals zero. After a lengthy discussion it was passed.

Treasurer’s Report: David Lundy reviewed the written reports. We have received 164 pledge cards to date. We expect to receive 100 more pledges, if we get the same as last year. Current income is \$1,350,155 and expenditures \$1,429, 961. The Foundation experienced a \$900,000 loss as of the end of the third quarter, but has regained some in October.

DECEMBER 8, 2015

Rev. Sherwood gave a report on the Discovery Process which included action items from the *Personnel Committee*.

Commencing immediately , Rev. Laura Sherwood take over the leadership of the Children Youth and Family ministry as part of her duties as ELM Interim Associate Pastor until the end of March. Prior to the end of March, a decision will be made whether all or some of the duties should be part of the responsibilities of the Interim Associate Pastor and the new Associate Pastor or should be transferred to a full-time or part-time Director of Children, Youth and Family. (MP)

A part-time pastoral care position (up to 10 hours a week) be created on a 3 month trial basis, to be filled by a contract with a local clergy person. Extension of this part-time position beyond the 3 month period shall be subject to available funding (MP)

The proposed revised staff supervision structure was MP.

Head of Staff Pastor

KLM Associate
ELM Associate
Director of Music
Financial Manager
Office Manager
Property Manager
Pastoral Intern

ELM Associate Pastor

Head of Housekeeping
Food Services Coordinator
Children, Youth, and Family Min. Dir.
Day School Ministry Director
Managing Artistic Director
Communication Director

Session minutes continued on next page

SESSION MINUTES, continued

2016 BUDGET
Elder Jim Ehlich led the discussion of the proposed 2016 Budget. After a very lengthy discussion it was MSP to approve the proposed budget after removing anticipated income of \$15,000 from the Peltier Fund leaving a projected \$21,159 deficit. A possible budget challenge during Lent was discussed, as was taking a slightly higher percent from the foundation next year. In addition it was discussed and agreed upon that we need a 3-5 year strategic plan that includes budget management as well as church growth opportunities.

Committee Testimony: Elder Luci Foltz reported the Children’s Committee Bake Sale was successful with everything sold resulting in \$326.00. Elder Marcie Weissner reported that the Spiritual Formation Committee is sponsoring a new group Socialization, Support, and Spiritual Growth for members who are alone. Elder Bob Beatty announced that the Officer Nominating Committee has completed slates for Elders, Deacons, and the 2016 ONC. The Worship Committee moved that there be one ELS service at 11:00 on December 27th and that communion by intinction be continued with the exceptions of the first Sunday in Lent (March 6th), the first Sunday in Advent (December 4th), and Maundy Thursday.(MP) The Religious Arts Committee has reactivated the Music Committee.

ANNUAL REPORT COMMITTEE REPORTS ARE NEEDED! The reports that need to be included at the Annual Meeting (FEBRUARY 7) are due no later than January 10. Sooner is better! Please submit your reports to Cindi Odle at codle@firstpres-fw.org. Copies of last year’s Annual Report are available for reference in the Church Office or call Cindi at 426-4721x112.

FIRST PRES STATISTICS

Parish Life Update for October and November 2015

October and November Worship Attendance:

Oct. 4	244
Oct. 11	243
Oct. 18	272
Oct. 25	282
12 first time visitors, 45 resident visitors, 106 non resident visitors	
Nov. 1	278
Nov. 8	294
Nov. 15	296
Nov. 22	341
Nov. 29	251
14 first time visitors, 45 resident visitors, 10 nonresident visitors.	

October and November Weddings

Jacob Roth Rosner and Hilary Lauren Robertson were united in marriage on October 10, 2015 in Fort Wayne, Indiana with The Reverend Jeffrey T. Lehn officiating.

October and November Deaths

Dr. Donald E. Helm	October 10, 2015.
Beresford Newman Clarke	October 23, 2015
Joyce Y. (Buckner) Parlow	October 27, 2015
Phyllis J. (Baker) Sheldon	October 31, 2015.
Dorothy V. Boger	November 19, 2015

Summary of Active Membership 819

Treasurer’s Report: Treasurer, David Lundy, showed a comparison of income by month for the past four years. He remains hopeful for gains as usual during December. He cautioned committee chairs of the oversight which will be exercised for over budget expenses. Current income is \$1,476,955 and expenditures are \$1,562,869.

Pastor’s Reports: Rev. Dr. An expressed his appreciation for the support he has received from the church. He invited everyone to the KLM Year End Worship on December 31st at 5:00pm including dinner. January 10th will be Confirmation Sunday. Rev. Jeff Lehn also expressed his appreciation for the support he has received, especially the study leave to allow him to write a devotional booklet for the congregation. Rev. Sherwood and Rev.Kathleen O’Connell will lead the “Longest Night” service on December 20 for those who feel a loss at Christmas time. Jeff reported a \$35,000 grant for security doors for the Day School.

2015 Income and Expense through NOVEMBER

	Actual	Annual Budget
Contributions	\$638,573	\$763,583
Transfers from Foundation	390,215	367,936
User Fees	383,995	358,121
Other Income	22,137	21,083
Special Offerings	26,613	23,833
Capital Exp. Gift-Com Fdn FW	26,613	23,833
Total Income	1,476,955	5,562,056
Total Expense &		
Capital Expenditures	1,562,869	1,621,395
Trfr to/(wdrl from)		
MEPF/MGJ EPF	\$(85,914)	\$ (59,339)

Newsletter Deadline and Publication Schedule
Please e-mail **Cindi Odle**, codle@firstpres-fw.org or mail or deliver contributions to the Church Office.

FirstNews is published 4 times a year. If you’d like a weekly update of current and upcoming events, please subscribe to the weekly electronic newsletter, First Pres Weekly News by providing your email address to **Jiin Jung** at jjung@firstpres-fw.org, or phone her at: **426-7421 x102**.

2016 PUBLICATION SCHEDULE

Issue	Deadline	Mail date
April, May, June	March 9	March 28
July, August, Sept.	June 8	June 27

FIRST PRES HAPPENINGS



All angels were adopted.



Smooth Edge 2 performed at the Sunday service and in an evening performance.



Lighting the Advent candle wreath.



FPC Youth performed an Advent play, “The Fumbly Bumbly Angels.”



FPC Youth Bake Sale was a success.



The Empty Bowls team.



We said goodbye to Lisa Yarian



We all joined together to honor our veterans.



The Korean Congregation honors our veterans.



THROUGH THE LOVE OF JESUS CHRIST



FIRST PRESBYTERIAN CHURCH

300 West Wayne Street
Fort Wayne, Indiana 46802

ADDRESS SERVICE REQUESTED

NON PROFIT ORG.
US POSTAGE
PAID
PERMIT NO. 217
FORT WAYNE, IN



JOIN FIRST PRES THIS EASTER SEASON

Mark these dates on your calendar!

- February 10.....Ash Wednesday
.....7:00 p.m. Worship Service, Sanctuary
- March 20Palm Sunday
.....9:00 and 11:00 a.m. Worship Services
- March 24Maundy Thursday
.....7:00 p.m. Worship Service, Sanctuary
- March 25Good Friday Service
.....12:00 p.m. Worship Service, McMillen Chapel
- March 27Easter
.....6:00 a.m., Korean City-wide Worship (*location TBA*)
.....7:00 a.m., Korean City-wide Easter Breakfast
.....7:30 a.m., Easter Sunrise Service
.....9:30 a.m., Easter Breakfast
.....10:15 a.m., Easter Egg Hunt
.....11:00 a.m., Festival Easter/Communion Service
.....11:00 a.m., Korean Easter Worship