

BIDDULPH'S HEARTS OF GOLD

The tireless work of the amazing Biddulph in Bloom team has again been rewarded as Biddulph were named winners of the best large town category in the Heart of England region of Britain in Bloom and were again presented with a Gold Award.

The Biddulph in Bloom team, led by the indefatigable councillor Hilda Sheldon MBE, also won the Chairman's Memorial Trophy for the best floral display.

The judges commented on the outstanding displays in Biddulph saying: "The difference that Hilda and her group of dedicated volunteers make to Biddulph becomes apparent as soon as you enter the town. Traffic islands, well maintained and planted, surrounded by colourful barriers and baskets would leave many local authority displays in the shade."

Other groups who have contributed to Biddulph's appearance were also mentioned by the judges;

"The WI ladies of Greenway Moor deserve a special mention for their outstanding centenary flower bed as do the lovely residents from Moorland Court who have created a vibrant and inspiring communal garden that has enhanced the lives and wellbeing for all that reside there."



Biddulph were named winners of the best large town category in the Heart of England Britain in Bloom competition

Brown Lees and Biddulph Moor also received mention for their first time entrance into the 'It's Your Neighbourhood' competition.

On presenting the Mike Garwood Memorial Trophy for the best floral display judges commented:

"This bloom town must be the best kept secret of Staffordshire as it has to be seen to be believed. The difference the numerous dedicated groups of volunteers, led by Hilda Sheldon MBE, make from the attractive planted and well-maintained traffic islands to the vast array of colourful barriers and outstanding baskets — it simply blows you away."

"We're not referring to a one off outstanding display, this is a whole town floral experience that is vibrant at every turn and must touch the lives of everyone. Behind every success story is a leader and this one can only best be described as a legend."

"Hilda has been driving this campaign with an indomitable spirit for over 24 years, where she ensures that great ideas turn into a reality and nothing is insurmountable. All this, together with the volunteers' horticulture excellence and attention to detail make Biddulph the very best floral display."

Biddulph go on to the national Britain in Bloom competition, the results of which will be announced in October.

G R PLIMBLEY LTD

INSURANCE BROKERS & BUSINESS SERVICES

Did you insure direct, saved money
but found the service impersonal?

Would you rather do business face to face
with experienced, sympathetic staff with the
latest technology at their fingertips?

AND save money?

Ring for a quote - local doesn't mean expensive!

Face to Face @ internet prices

SPECIALISTS IN:

- MOTOR INSURANCE
- HOME INSURANCE
- BUSINESS INSURANCE

PHONE OUR QUOTES HOTLINE

01782 522795

OR CALL FOR A CHAT

TEL 01782 512592

1 WHARF ROAD, BIDDULPH

Language for Fun
Lovely, lively language lessons for adults
www.languageforfun.org

Free French & Spanish Events Coming Soon!
See web site for details!
Beginners to Advanced.
Stress-free conversation based classes!
Social gathering 2nd Friday of every month 2pm at Melice Patisserie, Hanley Shopping Centre
Italian coming soon contact Richard!

Over 100 local learner classes in Alsager, Biddulph, Keele, Lingerhills, Newcastle, Stafford, Stone & Trentham

richard.roberts@tiscali.co.uk 07802 472784

Moorside Memorials
MONUMENTAL MASONS
Suppliers of Quality Memorials
Marble, Granite, Stone or Slate
Memorial Renovation & Grave Maintenance
Additional Inscriptions
Re-lettering & New Memorials
8 Congleton Road, Biddulph,
Stoke on Trent ST8 6DX
01782 522242
Units 8 -14 Albion Mill, Havannah Street,
Congleton, Cheshire, CW12 2AQ
01260 295435

WOOLISCROFTS SOLICITORS

incorporating EDWARD HOLLINSHEAD

'Kings of the Legal Jungle' - for all your legal requirements

TUNSTALL - Hollinsheads Chambers, Butterfield Place (Adjacent to NEXT)

ALSAGER - 44 Crewe Road

Offices also at HANLEY & WOLSTANTON



TELEPHONE 0800 083 97 87

www.woolliscrofts.co.uk

Caring side to Biddulph

Plans for almost 70 new homes on the former Meadows School site in Biddulph have been displayed at Biddulph Town Hall.



There are proposals for care apartments on the former Meadows School site

The development, if given the go-ahead, would provide 43 two bedroom and 26 one-bedroom apartments with flexible care as needed, as well as a function room and café open to the public, a residents' lounge, and even an outdoor gym.

Following consultation on the plans, an application will be submitted for the development. If successful, the extra care scheme will be a ShireLiving development; a partnership between the Trust and Choices Housing Association, who would provide the residents' care within the site.

The Wrekin Housing Trust is investing approximately £10 million in this state of the art development which in turn will create over 160 jobs in the wider community including 9 apprenticeships in the construction industry. The overall impact to the economy will be around £23 million.

ShireLiving apartments have already proved very popular, with three other new schemes open in Staffordshire, and a further 258 apartments also under construction across Staffordshire and Shropshire.

Biddulph residents were invited to a drop-in event at the Town Hall on Thursday 17th September held to showcase plans for a state-of-the-art new development which will provide affordable homes for the over 55s. Over 40 local residents attended the consultation evening as plans were unveiled to build 69 extra care apartments on the Meadows School site.

Coping with Cancer event

Members of the Biddulph Macmillan Cancer Support group are inviting people from the area to a free "Coping with Cancer" event.



The event is being held at the Victoria Centre in Station Road, Biddulph, on Thursday, October 15th and will include talks and information on a wide range of services available to cancer patients and their carers in the area. Among the organisations which will be giving presentations, or having information stands are:

- The Beth Johnson Foundation's cancer advocacy service
- Penny Brohn Cancer Care
- The Staffordshire Brain Tumour Support Group
- Macmillan Cancer Support information service
- Transforming Cancer & End of Life Care in Staffs and Stoke-on-Trent
- Healthwatch Staffordshire and Healthwatch Stoke-on-Trent
- Disability Solutions
- North Staffs Carers' Association

Rev Pam Butler will chair a question and answer session following the presentations. Terry Gibson, Chair of the group, said: "With the number of cancer patients on the increase, it's vital that people are aware not only of the signs and symptoms, but also of the support that is available locally in order to help them, and their families and carers, to cope with the disease."

The event is free and patients, families, carers and frier are welcome to attend. Organisations will be on hand from 6pm to chat to visitors. Light refreshments are also available from 6pm, with presentations starting at 7pm.



MP for Staffs Moorlands Karen Bradley Making plans for Biddulph



Over the five and a half years that I have been your MP, many people from Biddulph and nearby have contacted me for help with planning issues.

Whether it is about changes you want to make to your own property, a bigger development in the town or wind turbines on the edge, planning is something that can get people very upset very quickly. Sometimes I regret that I have no say over individual planning decisions but I do not think that people really want the MP to have the final say – after all you might not agree with me. But in fact that's why we have a committee system and why local councillors do make the decisions.

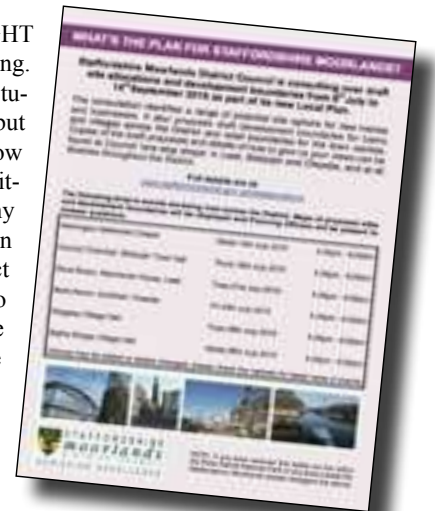
In the last Parliament, we introduced the Localism Act, giving powers to local communities to decide what their housing and business needs are. That was intended to stop applying the previous one size fits all, regional approach. After all what is right for Biddulph might not be right for Worcester.

So, under the Act, Staffordshire Moorlands District Council and the Peak District National Park now have to produce a Local Plan to identify which sites might be suitable for new housing or for new employment over the next 15 years. The first round of consultation on the plans has just closed so I hope as many of you as possible contributed.

It is important to stress that the suggestions in it are just that: sugges-

tions for places that MIGHT be suitable for new housing. There are no plans to actually develop those sites but the council wants to know whether any might be suitable, so there are many more sites in the list than will be needed. The Act also provides new ways to let communities to have their say, including the option of putting together a Neighbourhood Plan. This is a really powerful option which gives local groups their say on what is needed in their area and is suitable for them, there is also support available to put them together.

I will be lobbying the District Council myself to ensure that only appropriate sites are taken forward into the plan and that we get the right development for Biddulph – in particular so that the greenbelt is protected as much as possible but if you feel your area should be protected or if there is a need for a few extra houses for families or somewhere for small businesses to set up then it's well worth exploring a Neighbourhood Plan.



The first round of consultations on site allocations has just closed

SHEPHERD STREET CHIPPY

Biddulph's Traditional English Family Run Chippy



OPENING TIMES

| | | |
|-----------|------------|-----------|
| Monday | closed | 4.30-9.00 |
| Tuesday | 11.30-1.30 | 4.30-9.00 |
| Wednesday | 11.30-1.30 | 4.30-9.00 |
| Thursday | 11.30-1.30 | 4.30-9.00 |
| Friday | 11.30-1.30 | 4.30-9.00 |
| Saturday | 11.30-1.30 | 4.30-9.00 |
| Sunday | closed | closed |

Telephone orders welcome

23 Shepherd Street, Biddulph, ST8 6HZ



SHEPHERD STREET CHIPPY



BRAMMER'S

13 Station Road, Biddulph. 01782 513347

High Quality shoes for all the family

Good selection of children's shoes and trainers in different width fittings fitted by trained staff of many years experience.



Clarks, Ricosta, GaborRieker, Seibel and Nordika

Also a good stock of plimsols and wellingtons, and stocks of slippers for all the family held all year round.

Open 9am to 5.30pm Monday to Saturday



Prize Crossword Competition

Across

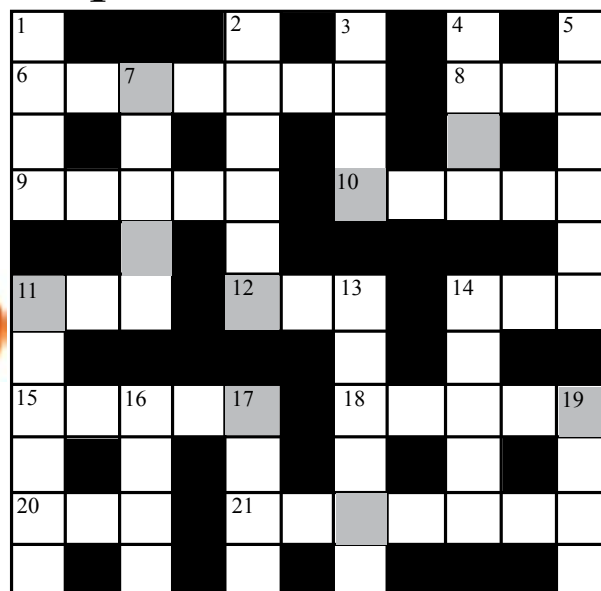
6. Confused the ROT CART for farm vehicle (7)
8. Have a beer in the SALES (3)
9. Material to write on will APPEAR shortly (5)
10. HAT WE wear to find grain (5)
11. Find garden tool in the end of SHOE (3)
12. Grains of corn found in a different ERA (3)
14. RAM comes back spoiled (3)
15. Studying MORES will reveal code (5)
18. Rise & fall of sea is described in small DETAIL (5)
20. Time period is not completely RARE (3)
21. Quarantine because TOE AILS (7)

Down

1. Climbing rung can be a PEST (4)
2. Go without food at end of HARVEST (6)
3. Boastful bird... (4)
4. A NEW thing will eventually fade (4)
5. See improvement in person who gambles? (6)
7. GRAPPLE ends in fruity encounter! (5)
11. Impede efforts to find wicker basket (6)
13. I RAN TO collect food portion (6)
14. I MADE some tools for communication (5)
16. PARE the crops for harvest (4)
17. Short PIECE turns out to be a saga! (4)
19. REEL back from sly look (4)

Many thanks to all who entered our last Crossword Competition. The correct answer was 'HEATWAVE'. First correct reply to be picked from the bag was from Mrs Hall of Brown Leese who wins a £10 gift voucher which he has chosen to spend at The Brindleys Lock - congratulations! This issue we are again offering a £10 voucher to be spent in a shop or business advertising in Biddulph Times (please state on your reply). The first correct answer drawn on November 6th 2015 is the winner. Just complete the crossword and re-arrange the letters found in the shaded squares to make a new word or words, send your answer on a postcard with your name, address and telephone number to:- **Good News, 128 High Street, Harriseahead, Stoke-on-Trent, ST7 4JX.**

Answers to last crossword: Across: 6. Elastic 8. Age 9. Ratio 10. Expel 11. Tic 12. Sob 14. Vow 15. Wreak 18. Voles 20. Roe 21. Tantrum Down: 1. Pear 2. Stoop 3. Ache 4. Carp 5. Bellow 7. Attic 11. Towers 13. Bovine 14. Valor 16. Eden 17. Kite 19. Sumo



THE CARPET SHOP
107 JOHN STREET BIDDULPH
Your local carpet specialist.

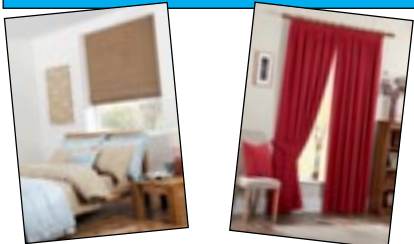


Stocked with a fantastic selection of carpet rolls, cushion floor and laminates at affordable prices

Planning & Fitting

01782 514480

Curtains by
FABRIC WORLD



Quality at an affordable price

7 Day Service

Made to Measure Curtains

Roman Blinds • Eyelets • Curtain Poles & Rods • Tracks

CLOTHING & CURTAIN ALTERATIONS

Customers own fabric made up

Free Home Measuring Service

Domestic and Contract work

Wide range of fabrics in stock

32 High Street, Biddulph, 01782 522151
www.fabricworldcurtains.co.uk

Panasonic

FREE 5 Year Guarantee
on Selected TV's



Many Offers In-Store

WAINS

The Local Panasonic Specialist

91 HIGH STREET, BIDDULPH

TEL :- 01782 513293 Established 1957

Oakley Plumbing & Heating

Boiler Installation, Service & Repairs

Bespoke bathroom installation including tiling, plastering, electrics and product managed from start to finish

- ☐ All general plumbing undertaken
- ☐ 24 years experience
- ☐ All work guaranteed for 12 months
- ☐ No job too small



07720 849471

3 Forrester Close, Biddulph ST8 6ST
oakleyplumb@yahoo.co.uk

Painter & Decorator

Lee Morrey



Interior & Exterior work
Over 27 years experience
Clean professional service

Biddulph Based

Tel 01782 852038

Mobile 07734 433722

J&R

BRASSEY
ACCIDENT REPAIR
SPECIALIST

Mechanical Repairs & Bosch Diagnostics



J&R Brassey, Cromwell Street,
Biddulph, Stoke-on-Trent, ST8 6ED

01782 516200

jandrbrassey@gmail.com

Minster Mills Furnishings

Walley Street, Biddulph

Custom Made Sofas & Chairs



**OUR AUTUMN
DEALS ARE SO
GOOD THEY'RE
SCARY!**



ALL SUITES REDUCED!

**SAVE UP TO 50% OFF
RETAIL PRICES**

CARPETS, VINYL, RUGS & LAMINATE
HUGE CHOICE FROM LEADING MANUFACTURERS

ALL AT UNBEATABLE PRICES!!



**RUGS UP TO
60% OFF!!**

Mr Tomkinson

QUICK STEP

QUICK STEP

QUICK STEP

QUICK STEP

QUICK STEP

QUICK STEP

QUICK STEP

QUICK STEP

QUICK STEP

QUICK STEP

QUICK STEP

QUICK STEP

QUICK STEP

QUICK STEP

QUICK STEP

QUICK STEP

QUICK STEP

QUICK STEP

QUICK STEP

QUICK STEP

QUICK STEP

QUICK STEP

QUICK STEP

QUICK STEP

QUICK STEP

QUICK STEP

QUICK STEP

QUICK STEP

QUICK STEP

QUICK STEP

QUICK STEP

QUICK STEP

QUICK STEP

QUICK STEP

QUICK STEP

QUICK STEP

Come and see what's on offer here in Biddulph
We will save you money, time & travel.

Minster Mills
Walley St, Biddulph

01782 522137

01782 510007

www.minstermills.co.uk

OPENING TIMES:

MONDAY - SATURDAY 10.00-5.00 SUNDAY 11.00 - 3.00

**DON'T LEAVE IT TOO LATE
TAKING ORDERS NOW FOR
PRE CHRISTMAS DELIVERY**



A sign of things to come in Biddulph

There are plans to 'reinstate' the different villages that were joined together to make up the modern day town of Biddulph with signs.



Drawings of two of the planned village signs



The Town Council have unanimously supported the idea. The designs and further information can be viewed on the town council website at biddulph.co.uk/village-sign

Before 1897 what we now call Biddulph was a collection of villages comprising of Biddulph Moor, Biddulph Park, Brown Lees, Gillow Heath, Knypersley and Bradley Green - which is where the town centre now is.

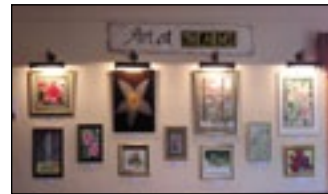
In 2003 the Town Council asked for ideas for village signs which would best represent the character of each of these different areas, however, the signs never materialised and this was put down to cost. Now, local artist and Gillow Heath resident Janice Dean has offered to do the designs for free and has found someone who would carve the signs for nothing.

The designs chosen all have features in common and are intended to give information about the history and geography of their area. Each sign has a frame which relates to some aspect of the 'village', and each sign contains the picture of a building in the area, if there is a coat of arms which belongs to the area it is also shown on the sign. Any special feature of the area is included and all the signs have decorative trees which are to be found within the village.

Changes for Art at the Arms

Art at the Arms started in 2005 as an opportunity for local artists to display their work and for local people to see what they had made.

Since 2010 the group has put up exhibitions at the Victoria Centre in Station Road, Biddulph which has proved to be a very successful venue. The group has always been made very welcome and parking and access is good. Money from the hanging fees paid by the artists is given as a donation to the Centre.



At a meeting of the group attended by members of a number of art groups in the town the idea of changing the name to one which was now more appropriate was discussed and after a great deal of thought "Arts at the Centre" was decided on since so many arts groups meet at the Centre - Biddulph Crafts, Art of Biddulph, The Kingsfield Singers, Biddulph and District Youth Orchestra for example.

Future plans include next years' Festival Open Exhibition which will open on the same day as the Festival parade - 25th June 2016. It is hoped to attract large numbers to the opening with the added incentive of tea / coffee and cakes.

Excitingly for artists there will be the opportunity for individuals or groups to put up their own exhibitions throughout the year, with artists responsible for their own arrangements and security. There will be no commission charged if your work sells.

Alf Walker who is very well known for his beautifully painted cartoons was first to take advantage of this opportunity with his own show at the end of September. A very small donation to the Victoria Centre would be required.

If you would like further details about this please telephone the Chair of Arts at the Centre, Rodger Deane 01782 518684. Dates for exhibitions would be organised to suit the artists by Victoria Centre Co-ordinator, Veronica Brown 01782 513218.

Biddulph Film Club

Following Biddulph Film Club's successful application to the British Film Industry (BFI) for equipment funding they are now free to book and show films of their choice.

The BFI funded £5000 worth of equipment to Biddulph Film Club enabling them to break away from the 'Reels on Wheels' service they previously used who would choose and supply the films and equipment - which meant that sometimes they didn't know what film they were getting until two days before.

Now they own their own equipment they can book their own films direct from the film bank and have set up an exciting programme of films before Christmas. They are also hoping to increase the number of film nights depending on demand.

Tickets cost £4 each and can be reserved by ringing or texting Jim on 07568 156 419 or just turn up on the night. Children under 14 must always be accompanied by a responsible adult.

For more information and the latest screening details see their website: www.biddulphfilmclub.co.uk.



Woman in Gold (PG13)
Thursday 15th October 7.00pm

Maria Altman sought to regain a world famous painting of her aunt plundered by the Nazis. She did so not just to regain what was rightfully hers, but also to obtain some measure of justice for the death, destruction, and massive art theft perpetrated by the Nazis.



Inside Out (PG)
Thursday 29th October 6:30pm

After young Riley is uprooted from her Midwest life and moved to San Francisco her emotions (Joy, Fear, Anger, Disgust and Sadness) conflict. The emotions live in Headquarters, the control center inside Riley's mind. As Riley and her emotions struggle to adjust, turmoil ensues.



Jurassic World (PG13)
Thursday 12th November 6:30pm

A new theme park is built on the original site of Jurassic Park 22 years after the original park failed. Everything is going well until the park's newest attraction - a genetically modified giant stealth killing machine - escapes containment and goes on a killing spree.



The Minions (PG)
Thursday 17th December 6:00pm

Minions Stuart, Kevin and Bob are recruited by Scarlett Overkill, a super-villain who, alongside her inventor husband Herb, hatches a plot to take over the world.

Special Christmas Show with Santa and Carol singers - £5

Biddulph Physiotherapy & Sports Injury Clinic

4 Station Road, Biddulph, ST8 6BJ

01782 519800

www.biddulph-physio.co.uk

- Back and neck pain
- Whiplash
- Spondylosis
- Headache/migraine
- Postural and ergonomic problems
- Sports injuries
- Sciatica
- Piriformis syndrome
- Post fracture rehabilitation
- Post surgery rehabilitation
- Tennis elbow / Golfer's elbow
- Frozen shoulder
- Joint stiffness and arthritic joints
- Shoulder pain
- Joint instability
- Acupuncture available



Mark Chadwick BSc MCSP HCPC
Julia Chadwick BSc MCSP HCPC
Member of the Chartered Society of Physiotherapy
Members of the Health and Care Professions Council

STATION VALETING
Gary & Lynn Sutton
Mobile: 07773 130223
email: gary@stationvaleting.co.uk
Tel 01782 379148
Unit 1, Forge Way, Brownlee's Ind Est, Stoke-on-Trent, Staffordshire, ST8 7DN

For all your valeting needs
Open 9am - 5pm six days a week

DENT AID
(STAFFS)
PAINLESS DENT REMOVAL
Ryan Sutton
Mobile: 07772 463449
www.dentaid.co.uk ryan@dentaid.co.uk

Biddulph Churches Together offers you an alternative to the traditional Halloween Party.

THE BIG POOL PARTY

BIDDULPH VALLEY LEISURE CENTRE
SATURDAY 31ST OCTOBER

Session 1: 5.15 - 6.15pm or Session 2: 6.30 - 7.30pm
(Each session followed by refreshments and craft for all the family)

COST: £1 per person and some party food i.e. crisps, cake, finger food
(Tickets available from your local church, please drop your party food off in the sports hall before you swim, so it's ready to share after.)

FOR: Families (Children 5yrs and over can swim without an adult but we ask parents to stay on site to supervise transition from the pool to the Hall when we all share refreshments and crafts)

For more information call Adam on 07792564490 or Amy on 07736953660

The Brindley's Lock Food House

Silverstone Crescent, Packmoor, ST6 6XP 01782 832022



The Brindley's Lock for great value home cooked freshly prepared delicious food - meals start at £5.95

Autumn Menu

2 Course Special for £9.95

Now taking bookings for Christmas, Tables going very fast!

Open:
Lunch time till 3pm and then from 5.00pm
All day Saturday & Sunday

Telephone 01782 832002 to book your table

Check us out on trip advisor or visit our facebook page

Why not try us and we will give you 10% OFF* our main menu or a FREE* bottle of wine for bookings of four people

Biddulph Community Police News

Help us to keep you and your home secure this autumn

As the longer, darker autumn evenings begin to draw in, we traditionally see an increase in burglaries as thieves exploit their opportunity to go about their criminality under cover of darkness.

Quite simply, you can help prevent becoming a victim of burglary by securing your home. There are simple steps you can take to beat the burglar – and not fall prey to thieves.

Investing in an alarm and effective indoor and outdoor lighting can deter or draw attention to an intruder. The most effective lighting is controlled by a 'dusk to dawn' switch that activates at nightfall. It is very cost-effective, and acts as a deterrent all night long.

An empty home is an attractive target for thieves. If you're going to be out all day or are going on holiday, set timers for one or more lights to come on when it gets dark. Alarm systems are also a worthwhile investment in the protection of your home and family. There are generally two types of alarm to choose from. 'Audible only' alarms set off a siren or bell, while monitored alarms are connected to a central monitoring service and alert police on activation. This type of alarm must be installed to BS.EN 50131 standard and will involve monitoring and service charges.

Always remember to lock doors and windows (even when you are at



home) and keep valuables out of view, especially electricals such as tablets and mobile phones, or other potentially valuable items such as handbags, purses and car keys.

The back garden is the most vulnerable part of a house and requires careful attention to security. Fences offer vital protection for a house and can deter burglars from gaining access to the grounds of your home. Garden sheds and garages are a very popular target with thieves and are often overlooked when security is being considered. Remember to keep expensive tools

locked away and avoid leaving tools in accessible places – burglars will often break into a shed to equip themselves with the right tool to then break into your home.

It is worthwhile to 'security mark' your expensive items, especially high value items or jewellery. Every item of property that we recover is checked for security marking or distinguishing features that may help to identify the original owner but many items do not have any identification information.

Cheshire Police will be holding a number of property marking events and offering free marking equipment to local residents – the dates and times for these events will be publicised in the local press throughout Autumn.

Anyone requiring further advice or guidance on home security should contact their local Neighbourhood Policing Team via 101.

Biddulph Community Police News

Community Police Meetings

Take the opportunity to obtain crime prevention advice and meet your local policing team at the meetings held throughout the year.

POLICE SURGERY - Crime Prevention from the local PCSO

Sainsbury's, Wharf Road, ST8 6AJ on **Friday 16 October** at 10:00am. Peter Johnson 0300 123 2345 then dial 08896.

BIDDULPH NORTH RESIDENTS MEETING

St Lawrence's Church Hall, Congleton Road, Biddulph, ST8 7RG, on **Tuesday 27 October** at 7:00pm. Peter Johnson 0300 123 2345 then dial 08896.

POLICE SURGERY - meet your local PCSO

Biddulph Library, Tunstall Road, Biddulph, ST8 6HH on **Wednesday 28 October** at 10:00am. Peter Johnson 0300 123 2345 then dial 08896.

RESIDENTS MEETING

Chilton House, Washington Close, Gillow Heath on **Friday 30 October** at 12:00 noon. Stephen Sherratt, 0300 123 2345 then dial 16234.

POLICE SURGERY - Crime Prevention from the local PCSO

Sainsbury's, Wharf Road, ST8 6AJ on **Friday 27 November** at 10:00am. Peter Johnson 0300 123 2345 then dial 08896.

RESIDENTS MEETING

Chilton House, Washington Close, Gillow Heath on **Friday 27 November** at 12:00 noon. Stephen Sherratt, 0300 123 2345 then dial 16234.



It is not just at Halloween when unexpected callers turn up on your doorstep.

- Remember official visitors should always make an appointment beforehand.
- Look through the door viewer or window to see who is outside.
- If you decide to open the door, put the chain or bar on first.
- Check the caller's details before you let them into your home. Telephone the relevant organisation to confirm the caller's identity.
- Do not rely on a phone number that the caller gives you.
- Do not feel pressurised into buying items on your doorstep and be wary of callers who may offer home repairs or gardening. Report any unexpected traders to Citizens Advice Consumer Service on 03454 04 05 06.

Report any crimes or suspicious incidents to the police on 101, or dial 999 in an emergency.



Wooden Venetian blinds & Vertical blinds in selected fabrics

Free Estimate Free Fitting






Wooden Venetian blinds

Roman Blinds

New Auto Garage Doors

Windowblinds2u.com

Factory Showroom

13-21 Liverpool Road,
Kingsgrove, ST7 1EA

01782 943421

07887751471


Find us on: **facebook**

Authorised Dealers for

keylite **Roof Windows Blinds Shop** **VELUX**


**These offers apply at point of sale on production of this advert (Valid until 31/10/2015. Not to be used with any other offer)

- Roman blinds
- Vertical blinds
- Venetian blinds
- Roller blinds
- Pleated blinds
- Panel blinds
- Perfect Fit / Intu
- Conservatory
- Mirage
- Vision




PREMIER, STATE OF THE ART, HIGHLY SKILLED REPAIR FACILITY.

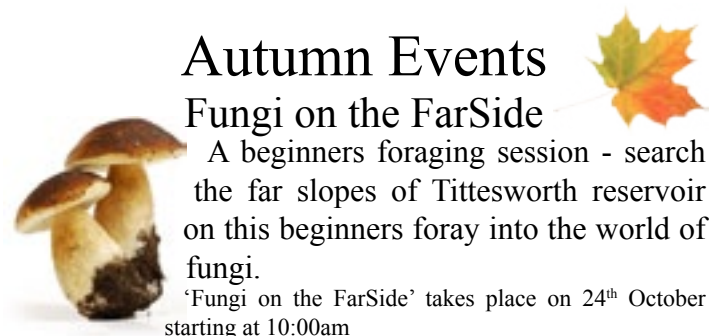
Smart Phones, I Phones, I Pads including all major electronic brands.



ICL KIDSGROVE, UNIT 1, THE MANOR BUILDING, CEDAR AVENUE, KIDSGROVE, ST7 1LA

TELEPHONE : 01782 787730 INFO@ICLUK.CO.UK FACEBOOK / ICL KIDSGROVE





Autumn Events

Fungi on the FarSide

A beginners foraging session - search the far slopes of Tittesworth reservoir on this beginners foray into the world of fungi.

'Fungi on the FarSide' takes place on 24th October starting at 10:00am

at Tittesworth Water, Meerbrook, ST13 8SN (nr Leek).

Meet at the Visitor Centre GRef: SJ 99347 60177, postcode ST13 8SN. Car parking charges apply.

Trees without Leaves

Walk around Coombes RSPB reserve and learn how to identify trees in winter with a fun quiz at the end.



'Trees Without Leaves' takes place on 28th November at 1:30pm at RSPB Coombes Valley, Bradnop, ST13 7EU (nr Leek)

Meet at the visitor Centre, GRef: SK00921 53405, postcode ST13 7EU.

The reserve is hilly and the paths may be muddy - please wear appropriate clothing.

For details on any of the walks and events or to book contact: Richard Whiting on 07960 875 157 or email r.whiting@staffs-wildlife.org.uk / www.churnet-valley.org.uk

Local & Family History Fair

Border History will be holding its annual local and family history fair for North Staffs and Cheshire local history enthusiasts on Saturday 10th October, at Alsager Civic Centre & Library, 9.30am - 2pm.

Come along, discover your family history, talk in genealogy, view records. Lots of local history and family history societies will be there, to offer help, sell you books, maps, documents, show you what they have been researching and to talk about any problems of questions you may have. All are welcome, admission £1.



Autumn Fayre

English Martyrs Church are holding their annual Autumn Fayre on Saturday 14th November at Biddulph Town Hall 10am- 12noon.

Admission is free and there will be lots of quality stalls.



Ultra marathon makes Biddulph man CRY

Mark Chadwick from Biddulph Physiotherapy and Sports Injury Clinic took on an ultra marathon to raise money for the charity CRY.



Mark took on the 'Marathon de Ben Nevis' - a 40 mile marathon around Ben Nevis, Britains highest mountain - on September 19th following months of training.

Mark raised money by having people donate £2 to guess at his expected finishing time, with the closest getting £50 from Mark.

He managed to complete the ultra marathon in the respectable time of 9 hours 46min, which considering that Mark confesses to not being a runner is a fantastic achievement.

Mark would like to say a "big, big thank you" to all the kind people of Biddulph, family and friends for all their support and kind donations.

At the moment the money raised is approximately £500 with more donations still to come in. Anyone who would still like to donate can pop into the clinic or post it to 4 Station Road, Biddulph, ST8 6BJ.

The money raised will be sent to CRY 'Cardiac risk in the young'. This charity was chosen to support the other fund raising already taking place in Biddulph.



Bring a Pound Day

Make your pound count on Bring a Pound Day.

So many of you across North Staffordshire have your own reasons to support your Dougie Mac on your Bring a Pound Day and it is thanks to your support that your local Hospice can keep providing care in your local community 24 hours a day 7 days a week.

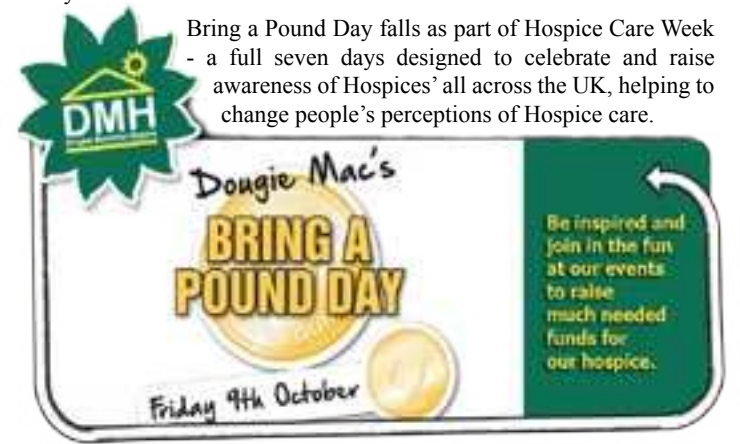
Every single pound donated will be spent right here in North Staffordshire providing free end of life care to those people who need us most.

Whether you sign up as part of a school, your business, your community group or as an individual every single £1 will make a difference in your local community.

Some of our favourite Bring a Pound ideas include dressing up or dressing down, cake sales and even a teachers versus pupils staff three legged race!

Why not make a week of it?

Bring a Pound Day falls as part of Hospice Care Week - a full seven days designed to celebrate and raise awareness of Hospices' all across the UK, helping to change people's perceptions of Hospice care.



ADAMS & SONS

REMOVALS & STORAGE

**POSSIBLY THE CHEAPEST
DEFINITELY THE BEST**

LOCAL & NATIONAL MOVES
HOUSEHOLD & COMMERCIAL MOVES

- Full/Part Packing Service Available
- Short/Long Term Storage with CCTV
- Medium & Large Vans
- Free Home Visit To Discuss Your Requirements
- Experienced, Reliable, Trained Staff
- Suppliers of boxes and packing materials



FREE ESTIMATES & ADVICE

Tel: 01782 239469

Nelson Bank, Acres Nook, Kidsgrove, ST6 4QL

www.adams-removals.co.uk

ADAMS & SONS

REMOVAL, STORAGE & CLEANING

www.adams-removals.co.uk

CLEANING

• Have your home professionally cleaned when you move out (and) or when you move into your new home.



• Residential and commercial cleaning service available



• Available weekly, fortnightly or monthly

• Family run business with all employees CRB checked



• Service with a smile to suit everybody's needs

• No job too big or too small

CONTACT SHARON:

01782 239469

Email: nicolas.adams@btinternet.com

remote key repairs

DO YOU HAVE A BROKEN CAR REMOTE KEY OR ALARM?

We can repair or refurbish your existing remote for a fraction of the cost of replacement.



If it's an immobiliser repair, immobiliser bypass, remote key repair or a replacement key fob, Remote Key Repairs can supply, repair or refurbish quickly to get you motoring once again!

Contact Remote Key Repairs today and we can offer a repair service within 24 hours.

Remote Key Repairs - the UK's leading Key Fob repairers
Call: 01782 518 086 - Mobile: 07711 660 980

Please visit us at: www.remoteskeyrepairs.co.uk

**10%
OFF
on production
of this
advert**

Cakes by Millrise Celebration Cakes

25 High St Biddulph, ST8 6AW

01782 510222

www.cakesbymillrise.co.uk



**All Your Electrical
Requirements**

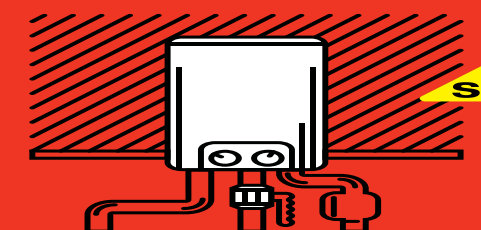
Re-Wires
Extra Lights
Extra Sockets



01782 511119

www.manorelectrical.com

Alsager based - 07884 403221
www.abbeygasboilers.co.uk
Check out our website for latest offers



Recommend a friend and get £50 Argos Voucher*

*After boiler installation

abbeygasboilers

History in the Landscape

When you travel about the Biddulph and Trent Valley's the landscape reflects the activity of people over the generations.

Clues are left which can still be seen, tracks and mounds show early industrial workings, archaeology can find hidden artefacts and industries and even street or village names reflect this early use.



Starting in Biddulph the Western landscape is dominated by the ridge of Congleton Edge and the folly that is Mow Cop Castle. It is known that in 1754 Randle Wilbraham of nearby Rode Hall built an "elaborate summerhouse looking like a medieval fortress and round tower." This bland statement can lead to research into the local families of land-owners, the arguments about ownership of the land and a library of photographs. It doesn't reflect the fact that the area around the castle was nationally famous for the quarrying of high-quality millstones ('querns') for use in water mills and that some of the earliest date from the Iron Age. This ignores the removal of many tonnes of millstone grit which can be linked to local haulage companies, tramways down to Congleton and the eventual links to the canal system. Hearsay also comes into the equation as it is stated that "millstones were taken to the edge and then rolled down the hillside to the wharves". It also fails to include the importance of the Castle in the formative years of the Primitive Methodist movement.

Nearby is 'The Old Man of Mow' stands and the theories about the nearly seventy foot column include it being a derrick to aid lifting stones, that the stone was left as it was of poor quality, that it marked an earlier cairn or was the boundary between the two local landowners. Here we have that addition to history which is the need for speculation. Even local author Alan Garner wrote a book about this eccentric pile of stone. Beneath the

castle is a tunnel which has been extensively researched, having been opened and explored and then re-sealed. If you would like to find the tunnel entrances now you will need to look at all the documents, films and maps to try and find them. Even more hidden are the tramways which led from Stonetrough Colliery to the tunnel but over the years local people have used the above sources to find evidence of their existence. Walk anywhere on the west of Biddulph and you can find evidence of tramways, railways, outcrops



and spoil heaps of the coal industry. The photograph on the left shows the stone sleepers of a horse drawn tramway which can be found near the former Falls colliery. One mystery is the land to the left of Wedgewood Road in Gillow Heath which is railway-like and runs in parallel with the road but is it a drove road, tramway or railway from the local colliery?

Travelling further afield down the Trent Valley there are a series of villages which are close together but provide information on the early activities of people in the area. Aston by Stone, Burston, Sandon, Enson, Salt, Weston and Ingestre are all on a six mile stretch of the A51. There has been a lot of research on all of these villages and the Internet provides a lot of information. Each village or the Hall close by has a website and here is a synopsis of each starting with Aston. "Most people are attracted to Aston by the pretty silhouette of the spire of St Saviour's and the old church school nestling amongst the trees. The parish church was built in the Early English style during the 1840s by local landowners, the Parker-Jervis family. Unusually for such a small village there is another church - the Catholic church of St Michael in the grounds of Aston Hall. This house was bequeathed for the use of a Roman Catholic community, and the Hall is now run by a small group of nuns who care

The Old Man of Mow



for sick and aging clergy. The relics of St Chad were rediscovered in the chapel at Aston Hall in 1838, where they had been hidden during the Reformation. They now lie in St Chad's cathedral in Birmingham. Further evidence that Aston has long been a Catholic stronghold is that Cardinal Newman is reputed to have been converted to Catholicism whilst staying here in around 1843. The present Hall was rebuilt in 1855 on the site of the original moated mansion. Legend has it that a cross on the Hall's boundary wall marks the spot where a monk was killed by lightning."



Sandon has its own website and Sandon Hall is a 19th-century country mansion, the seat of the Earl of Harrowby. It is a Grade II listed building set in 400 acres of parkland which is developing as a concert and film venue. In the grounds there is a column erected in 1806 by the first Earl of Harrowby in memory of the great Prime Minister. It is a stone Doric column 75 feet high with urn at the top modelled on Trajan's column. You can walk around the column and see the bridge linking the column to the adjacent ridge. Interestingly there doesn't seem to be any explanation of why it is there.

Salt has a church and an excellent pub and is named after the most important export from the valley – salt. However, the largest salt works was nearer to Ingestre and Weston where this early industry continued into the canal age. The street name Salt Works Lane is in Weston and leads down to the canal and site of the salt works. Boatmen on the Trent and Mersey Canal would have found transporting salt an ideal cargo as they could deliver the tons of coal from the local collieries and have a return cargo waiting for them. It took slightly more coal to produce each ton of salt. When the building firm Wimpey put in a planning application for houses on the site, which is near Weston, an archeological report was prepared which makes interesting reading. The earliest known activity on the site dates to

1821 when Lord Talbot built The Weston Salt Works. James Trubshaw's plan of Lord Talbot's salt works, dated 1820 and at that time Staffordshire's only other salt works, shows that the original works was located at the southern end of the site and contained eight pans for evaporating brine. This brine derived from a borehole located on the south-western side of the River Trent, around 200m to the south, and thus had to be pumped under both the river and the canal, before being stored in the brine pit located at the northern end of the complex. Put "9859Wbreport" into a web browser to see the rest of this report.



Finally Ingestre Hall is the former seat of the Earls Talbot and then the Earls of Shrewsbury and is now owned by Sandwell Metropolitan Borough Council and is in use as a Residential Arts and Conference Centre. The stables are extensive and they are explained by the fact that in 1895, Charles Chetwynd-Talbot, 20th Earl of Shrewsbury founded the Staffordshire Polo Club at the Hall. One final building deserves a mention, and a visit, is the Church of St Mary the Virgin. This beautiful building, reputedly designed by Christopher Wren, was completed in 1676 and replaced an earlier church has a fine screen and ornate pulpit with work by Grindling Gibbons. It has always been a Parish Church, a church for the people, and continues to be used by the villagers and community.



Church of St Mary the Virgin

In travelling such a short distance either walking around Biddulph or by car down the Trent Valley then the landscape reveals the people, families, land use and industries from previous generations and today more of this information is readily available to you at the click of a mouse.

Turn your winter blues green!

Winter's nearly upon us and the outside – and inside – of your window systems are probably in need of a good deep clean.

Gutters and down spouts may be getting blocked with moss and leaves – which will mean big problems if there are heavy frosts. Your conservatory roof is almost certainly developing an algae overcoat –and it's also likely that your paths, driveways and decking will be getting dangerously slippery – which can prove absolutely lethal – especially for older members of our communities.

Some maintenance problems won't wait until Spring. With a Clean&Green house valet you can ensure that you end this year – and begin the next – both happily,



Moss removed from roof tiles.



ENVIRONMENTALLY FRIENDLY uPVC CLEANING SPECIALIST

01260 281 155
07769 835 060

email: info@cleanandgreen.me.uk

safely and in one piece!

Give Chris a call now on 01260 281155 for a no obligation quote. Take up the service and when he's done, he'll leave you with a smile on your face – and your property really Clean&Green.

Biddulph & Tunstall Chiropody Clinic

State Registered Chiropodist

STUART REILLY BSc, D PodM, SRCh ZOE REILLY BSc (hons), SRCh

Surgery Appointments
and Home Visits
Evening and weekend
surgery available

Tunstall
67 The Boulevard

01782
834080



Biddulph
4 Station Road

01782
518228

D.SMITHSON
davidsmithson.co.uk

All types of Fuel

Coal
Solid Fuels
Calor Gas
Logs
Eco-Fuels
Paraffin
Kindling

Are you using the right fuel for your fire?
Ask Bill, your local coal man
www.davidsmithson.co.uk/askbill

Local Delivery Service

Monday - Friday 10am - 5:00pm Saturday - 10am - 3:00pm
The Caravan Storage Centre, Liverpool Road,
Kidsgrove. ST7 1EA Tel: 01782 787 887

www.charter-vets.com



We pride ourselves in providing 24 hour emergency care for all our patients at our own surgeries with our own vets 7 days a week 365 days a year.

Competitively Priced Preventative Care
Neutering - Vaccinations
Full Diagnostic & Surgical Facilities
Experienced, Fully Qualified Staff
Personal Friendly Service

Butt Lane 01782 771441
Biddulph 01782 513077
Congleton 01260 273449
Newcastle 01782 616551
Smallthorne 01782 577995



RCVS
ACCREDITED
PRACTICE

24 HOUR
EMERGENCY
GUARANTEED



A happy place to live

The Staffordshire Moorlands has been named as the fourth happiest place to live in Britain.



In the Government's Life Satisfaction Index, which takes into account house price to earning ratios and satisfaction, Staffordshire Moorlands

were ranked fourth with house prices at 4.2 times the average local income and a satisfaction rating of 7.7.

The Life Satisfaction Index data found that the key to a blissful and cheap life seems to be living in a beautiful and sparsely populated part of the country, where the natural landscape makes up for a lack of amenities.



Be a good neighbour help plan for Biddulph

Biddulph residents are being encouraged to get involved in the development of the town's Neighbourhood Plan.

The Neighbourhood Plan gives residents and local groups their say on what is needed and is suitable for them in their area. There is support available to help put them together and a series of workshops have been arranged for people wanting to get involved. Sessions for Biddulph North, Gillow Heath and Knypersley will take place throughout October. Knypersley session will take place at Biddulph High School at 7pm on Wednesday 7th October. A combined meeting for the Gillow Heath and Biddulph North areas will be at 7pm on Tuesday, 27th October, at St Lawrence's Church.

More information is available by calling 01782 297845 or emailing bid-dulph@staffordshire.gov.uk

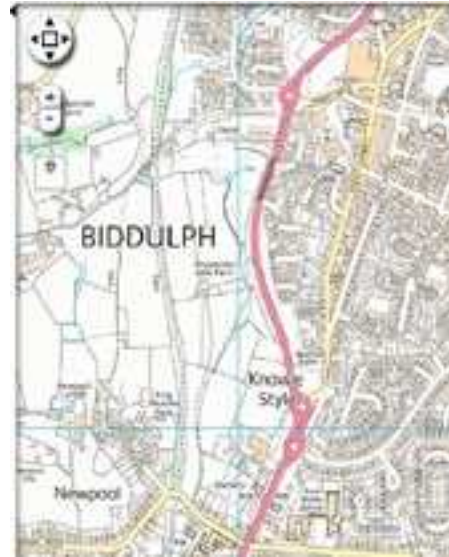
Council launches interactive planning map

If you're trying to find information regarding planning applications and constraints in your local area, look no further than the Staffordshire Moorlands Council's new interactive mapping system.

The online map allows you to view the status of local planning applications. It also lets you find out if your property is in a conservation area; flood zone or smokeless zone; search for protected trees; view listed buildings and sites of scientific interest, look at Local Plan information.

The above list certainly isn't exhaustive, so head over to the map to find out more. The online maps are simple and easy to use and there is step by step guidance on the Staffs Moorlands District Council website.

To find the interactive map go to www.staffsmoorlands.gov.uk/planning



Biddulph Running Club At the Lakes

On Saturday 5th September a large group of runners and support crew from Biddulph Running Club took part in a Lakeland Trial Race at Keswick.

This is becoming quite a regular race for the runners, who tend to travel to Keswick on the Friday and camp overnight before racing on Saturday.

To say that this 15km Race is undulating is somewhat of an understatement, as the course weaves its way up and down some huge mountainous areas, as well as, through streams, over rocks, and through some very swampy and boggy areas.

In total 12 runners from the club took part in the race, with Sean Greeves getting home first for the club in a time of just 1:15:40, which was enough to earn him 14th place overall, out of a total of 496 runners!! Sean was closely followed by Steve Jones, in a time of 1:17:55, and then David Maydew in 1:18:38, which gave Biddulph Running club 3 runners in the first 26 finishers! First lady back for Biddulph was Rachel Hollins in a time of 1:23:31, followed by Karen Murphy in 1:31:49, and then Dawn Addison Moss in 1:34:00. Also running in the Junior fun run, were 2 young runners who have great potential to join the club in the future. Lexi Carr and Rossi Carr both had great fun taking part in the race!

For full results and more information please visit www.biddulphrunningclub.co.uk



Vicky's Respite

Vicky's Respite is a not for profit Community Interest Company offering respite for people with learning difficulties.

Operating from 10 Tunstall Road, Biddulph, Vicky's Respite aim to offer services that are no longer provided by the County Council following day service closures across the county earlier this year.

It has been set up by Vicky Shaw and Lesley Cornes, who have more than 30 years experience between them working at Kidsgrove Day Centre before in May.

The new exciting venture aims to provide day opportunities and PA service, Monday to Friday, with a wide range of activities, including Arts, Crafts, Pottery, Dance and independent living skills available in a safe, homely atmosphere, encouraging individuals to gain confidence, new skills and experiences within their community.

There is also a Dance Session every Wednesday morning 10 - 12 at Congleton Road Community Centre, Butt Lane, ST7 1ND, which costs £5 a session (carers go free).

More information is available by calling Mrs Shaw on 07898 177 685, Mrs Cornes on 07523 229 958 or by emailing vickysrespite@yahoo.co.uk



Vicky's Respite offers respite for people with learning difficulties

G&E Fires, Stoves Bathrooms Ltd

G&E Fires Stoves Bathrooms Ltd were established 20 years ago and have been successfully designing and installing bespoke and made to measure fireplaces and bathrooms ever since!



Visit our showroom in Kidsgrove, Staffordshire to see our fantastic displays.

We cover Stoke-on-Trent, Newcastle-under-Lyme, Cheshire and beyond.

- Large Showroom
- Fireplaces, Fires, Stoves
- Woodburning, Multifuel, Gas & Electric
- Bathrooms & Tiles



G&E Fires, Stoves & Bathrooms Ltd, 29 Liverpool Road, Kidsgrove, Stoke-on-Trent, ST7 1EA

tel: 01782 785965 fax: 01782 785911 web: www.ge-firesstovesbathrooms.co.uk

email: info@ge-firesstovesbathrooms.co.uk

ELECTRIFYING DRIVING
HAS ARRIVED AT HOLDCROFT
CREWE.

WITH FUEL COSTS FROM
JUST 2P PER MILE
& 0% APR REPRESENTATIVE



HAVE IT ALL



NEW LEAF VISIA 5DR AUTO
FROM £199 A MONTH
0% APR representative
Free Home Charging Unit

The 100% electric Nissan Leaf | Recommended by 96% of owners* | £3,200 Total Deposit Contribution**

Holdcroft Nissan Crewe
Weston Road, Crewe, Cheshire CW1 6JS
Tel: 01270 531000 | www.holdcroft-nissan.co.uk

Fuel consumption figures for Nissan LEAF - CO2 while driving 0 MPG N/A. Offer valid until 30 November 2015 at participating dealers only and subject to vehicle availability. Finance provided by RCI Financial Services Limited, PO Box 149, Watford WD17 1FJ. Subject to status. Guarantees and indemnities may be required. You must be at least 18 and a UK resident (excluding the Isle of Man and Channel Islands). Terms and conditions apply, please visit www.nissan-offers.co.uk/termsandconditions or your local dealer for full details. **TOTAL DEPOSIT CONTRIBUTION OF £3,200 IS ONLY AVAILABLE WHEN TAKEN ON 0% APR REPRESENTATIVE PCP NISSAN FINANCE PRODUCT. Model shown is LEAF Visia from £199 per month with additional metallic paint at £525. Monthly payments based on LEAF Visia with CUSTOMER DEPOSIT OF £2,431.50 FOLLOWED BY 24 PAYMENTS OF £199 AND OPTIONAL FINAL PAYMENT OF £11,082.50. LEAF offer based on 6,000 miles pa, excess mileage 10p per mile. Offers not available in conjunction with any schemes or other offers. Vehicle price includes first registration fee and 12 months' road fund licence. Our dealership introduces customers to a limited number of finance providers including RCI Financial Services Ltd. We may receive a commission from the finance provider for the introduction. For terms and conditions relating to Nissan technologies visit www.nissan.co.uk/technology T&Cs. Always drive carefully and attentively. *From 2p per mile is based on (i) overnight electricity costs (British Gas standard tariff rates for a customer paying by direct debit as at 1 February 2015, assuming seven hours of charging at the night rate and one hour on the day rate), (ii) 95% charging efficiency, and (iii) a range of up to 124 miles per full charge (based on New European Driving Cycle). Actual consumption and range may vary due to driving style, road condition, air-conditioning and other factors outside our control. Daily standing charge of 26p also applies. Relates solely to the cost of the electricity used to charge the LEAF and takes no account of any other costs associated with running/owning the vehicle. †Source: June 2014 Nissan Europe Customer Satisfaction survey of 481 LEAF buyers across UK, Spain, Netherlands, France, Sweden, Denmark, Belgium, Switzerland and Norway, who had owned their car for approximately one month. Includes the top two survey options, 'definitely' or 'probably' would recommend. Information correct at time of going to print. Model shots shown are for illustration purposes only. Nissan Motor (GB) Ltd, The Rivers Office Park, Denham Way, Rickmansworth, Hertfordshire WD3 9YS.

BOOTH'S GARAGE

ROCK END, BIDDULPH MOOR, ST8 7NP

BOOTH'S GARAGE CAN SERVICE YOUR CAR FROM NEW SAVING YOU MONEY WITHOUT AFFECTING YOUR WARRANTY

**ABS, AIRBAG & ENGINE MANAGEMENT
DIAGNOSTICS & REPAIRS**

**GENERAL REPAIRS USING
QUALITY PARTS**

CLASS 4, 5 & 7 MOTS

4 WHEEL LASER ALIGNMENT

MOTOR CARAVAN SERVICING

**AIR CONDITIONING
& DEODORISING**



**FREE
MOT***
*with a full service on
production of
this advert



**TYRE SALES
WHEEL BALANCING
PUNCTURE REPAIRS**



TO BOOK CALL:

01782 513694

or book online at: www.boothsgarage.co.uk



National Trust

Activities at Biddulph Grange Gardens

Pumpkin Carving Workshops



Create your own spooky pumpkin! Join our gardeners in their workshop area to carve a fantastic pumpkin for you to take home for Hallowe'en, then enjoy a free cup of tea or juice in the tea-room. Ticket price - £6 in-

cludes pumpkin, drink and entry to the garden.

Wear suitable warm clothing and footwear as the workshops are held in the gardeners greenhouses, children must be accompanied by an adult.

Wednesday, 28 October 3 sessions: 10am to 11am, 12pm to 1pm and 2pm to 3pm. Gates open at 11am and each workshop lasts approximately 1 hour.

All tickets £6, booking essential 0844 249 1895. More information call the central box office, 0844 249 1895, biddulphgrange@nationaltrust.org.uk

Hallowe'en bonfire, lantern walk & fireworks

Celebrate Hallowe'en in style! Enjoy a walk around the candle lit garden, brave the spooky corners, have your face painted then wander to the tennis lawn to try the BBQ and bar, and enter the best Hallowe'en costume competition. Then it's time to light the bonfire and watch the fireworks!

Dress with suitable warm clothes and foot wear and bring a torch. Children must be accompanied by an adult. Show your tickets to the team at visitor reception. Enter the garden room for the children's costume competition.

Assistance dogs only are welcome There are around 400 steps in the garden. This and the dark may mean the garden lantern walk is unsuitable for wheel-

chair users.

Friday 30th October and Saturday 31st October 6pm - 8pm (gates open: 6pm last admission 6.30pm)

Lantern walk open 6pm to 8pm - Face-painter 6pm to 7.30pm - Costume competition winners announced 7pm. Bonfire lit at 7.15pm and Fireworks from 7.30pm - BBQ open 6pm to 7.30pm.

Adult £7.50, Child £5.00 booking essential 0844 249 1895. More information call the central box office, 0844 249 1895, biddulphgrange@nationaltrust.org.uk



Dangerous Discoveries at Biddulph Grange

The Dangerous Discoveries exhibition continues at Biddulph Grange Garden. The exhibition of contemporary art by 5 exciting artists whose works reflect the themes of the garden is on display until 1st November.

Five contemporary artists have created an art exhibition with the theme of "Dangerous Discoveries" as part of the Trust New Art project.

The Dangerous Discoveries contemporary art exhibition includes works by Katy and Rebecca Beinart, Rebecca Lee, Sarah Tulloch and Laura Youngson. Coll and range from projection art, to sound art, work influenced by warden cases and delicate pieces in leather and vellum. The works are exhibited in various locations within the garden.

Dangerous Discoveries exhibition is open daily and runs to the 1st November 2015, 11.00am - 5.30pm. Booking not needed, normal admission charges apply.



MANORSHOP

www.manorshop.com

DISCOUNT:

- Laptops
- Electrical Services
- Repairs
- Call Out Service
- Networking

Epson & Canon
INK CARTRIDGES
5 for £10.00

While stocks last

**PC / LAPTOP
CLEAN / SERVICE**

Bring your PC/Laptop in for a
tune-up from £25.00

Terms & Conditions Apply

ManorShop: Scholar Green / Trentham / Hanley
(01782) 788900

Biddulph Youth and Community Zone



The official opening of new Biddulph Youth and Community Zone (BYCZ) was conducted by the deputy major, Jill Salt, on Saturday 5th September.

The opening day was a great success with many local councillors and members of the community joining in the celebrations. People were able to look around the centre and see what the zone can offer and the many rooms available to hire.

The Youth and Community Zone provide a safe and warm, friendly and inclusive environment for the whole community, generate wider benefits for users, supporting them to gain confidence and learn new skills such as communication, planning, team work and decision making.

They do this by offering a variety of activities such as:

Evening Youth Activities, Exercise Classes, Walking Football, Coffee Mornings, Bingo sessions and Healthy eating for the family. Mental health support, Disability groups, IT Workshops, Film Clubs and Advisory Groups.

BYCZ aim to be a hub within the local community. Working in Partnership with County Council, Town Council and a variety of agencies including Your Moorlands and families first to deliver a quality service.

Recently they were funded to deliver the Space Scheme in Biddulph which was a great success.

They have also just won ‘Community Group of the Year’ in the Sentinel’s Our Heroes Awards. The team behind Biddulph Youth and Community Zone were judged overall winners for banding together to rescue the youth centre – which is now going from strength to strength.

Upcoming activities include:

Youth Club every Monday and Friday, 18:30 until 20:30. A safe environ-

ment where young people can come and get involved in positive activities and meet and make new friends. We offer a variety of activities and trips and opportunities

Film Club Mondays 12pm (classic films aimed at seniors). Free entry, come and watch a classic movie with free tea and coffee and biscuits and meet new people.

Walking Football every Tuesday 18:30-19:30. Starting Tuesday 29th September at 6.30, it’s a great way to keep fit, if you love the game and are out due to injury, age or just lost confidence.

Bingo every Thursday 12:00 -14:00 starting 1st October. Come along and meet new people for coffee and biscuits and win a weeks supply of fruit and veg and other prizes.

Painty Session 1st October & November 26th 6:30. Imagine having the opportunity to unleash your creative energy in an informal and friendly environment. A fun night of socialising with friends, following the simple step by step instructions of a master artist from blank canvas to creating your very own masterpiece. A painting you can be proud of and take home at the end of the night! Painty is a pop-up art studio that can be run anywhere, including workplaces and private homes. Painty’s values are about fostering a fun, low stress, non-judgemental environment that inspires everyone to enjoy the process of creating something from nothing. We recognise the benefits of creativity in people’s lives for both personal and professional development. Free food and refreshments.

Coming Soon:

Cook Camp for parents and children.

Exercise Classes funded by sportivate including, net ball, yoga, Clubercise etc (free for women and young women).

Family Halloween Event



See us on Facebook (Biddulph youth and community Zone) and Twitter (@BYCZone) and our website www.bycz.org.



Biddulph Male Voice Choir

Biddulph Male Voice prepare for Annual Concert



After a short summer break the choir are now preparing for another busy autumn.

In October the choir perform at St.Mary’s Church Bosley in a special fund raising concert. The concert on the 10th October promises to be a sell out affair with all proceeds being raised for the Bosley Wood Treatment Disaster Appeal.

And then it’s straight back to final preparations for the Willmott Dixon North Wales Choral Festival in Llandudno, this is where the choir compete against other male voice choirs from home and overseas and it will be the first time for a number of the Biddulph choristers singing in a competition. The choir has more recently focussed on concert performances but several years ago they came third at the Llangollen Eisteddfod. The competition takes place on Saturday the 7th November at Venue Cymru.

A week later the choir have their annual concert and this year it is taking place at the Mitchell Arts Centre in Hanley, this promises to be a wonderful evening and tickets are already on sale for the event. The guest soloist will be the winner of the prestigious Rose Bowl from the 2015 Biddulph Music Festival which takes place on the 3rd October.

A list of all forthcoming concerts and ticket information can be found on the choirs website www.biddulphmvchoir.co.uk

Residents digging in

Plans for new allotments in Springfield Road have been met with a mixed response.

Biddulph Town Council Allotments Committee have submitted an application for 31 new allotments with access path and landscaping on vacant land in Springfield Road to satisfy a pressing need for gardening space. The Town Council currently has two allotments sites - one in Moorland Road and one off Park Lane - which are in great demand and are currently full with long waiting lists.



There are plans for 31 allotments in Springfield Road

But the plans have been met with a mixed response. In Bloom ChairCouncillor Hilda Sheldon supports the proposal, she said “*We have a pressing need for more allotments because we have a long waiting list of people and we have an obligation to the community to try and provide them. Some people have been waiting many years. The list never seems to go down so we have got a pressing need. It’s wonderful really for people to get the chance to grow their own food.*”

However there are a number of comments objecting to the plans on the SMDC website with safety being a concern. A report by the police has also highlighted the need for security stating that “*security will be an important consideration for the allotment holders as allotments with poor security are often targeted by offenders resulting in a downwardly spiraling situation.*” They have recommended a higher fence, strong sheds and a path around the edge.

The application can be viewed by searching for reference number SMD/2015/0554 at staffs Moorlands.gov.uk

Those interested in becoming taking an allotment can put their name on the waiting list by calling 01782 297845 or by visiting biddulph.co.uk/allotments and completing the application form.

Claire's Resales

Always buying & selling good quality furniture

We also specialise in house clearances



CLEAN LEATHER 3 PIECE SUITES URGENTLY WANTED

Telephone:

Claire 07553 196850
Wayne 07825 002339
for a free home visit

Family run business

16 High Street, Biddulph
(near the Post Office)

Dolven Funeral Services

Biddulph's only Independent Family Funeral Directors

NOW OPEN

Caring family business offering superior personal attention 24 hours a day

- Privileged to serve your family •
- Private chapel of rest •
- Floral Tributes •
- Catering •
- Horse drawn Hearse •
- Pre-Payment Funeral plans •

Dolven Funeral Services, 31 Congleton Road, Biddulph, Stoke-on-Trent ST8 6DY 01782 379191

Dolven Funeral Services, 1 Nashe Drive, Stoke-on-Trent ST3 2HD 01782 599156

Email : info@dolvenfuneralservices.co.uk
Website : dolvenfuneralservices.co.uk

Amazing Glazing

Specialist in:

UPVC Windows, Doors, Porches, Conservatories, Fascias, Soffits, Guttering, Canopies

- ✓ No Salesman
- ✓ 30 years experience!
- ✓ Single glass cut to size & fitted
- ✓ Misted double glazed units replaced

Credit facilities available

Call us on:

01782 775840 / 07780 900023
Always happy to help

STAFFORDSHIRE ELECTRICAL & PLUMBING

Your local approved installer based in Scholar Green

- | | |
|---------------------|-------------------------------|
| • Rewires | • Heating |
| • Extra Sockets | • Landlord Certificates |
| • Intruder Alarms | • Outside Taps |
| • CCTV | • All Plumbing Repairs |
| • Bespoke Lighting | • Full Bathroom Installations |
| • Security Lighting | |

NO VAT ON LABOUR



Telephone Chris on:
01782 774350 or Mob 07931 317579

Don't bring anymore rubbish to Biddulph

A review of the recycling centres in the Staffordshire Moorlands has led to the decision to close the 'bring' recycling sites including those in Biddulph.



The 'Bring' sites at Biddulph Valley Leisure Centre and Mill Hayes Sports Ground have been scraped



'Bring' sites are recycling points the council provide where residents can take their recyclable items such as bottles/paper/plastic/textiles and tin. They currently provide 27 recycling 'bring' sites but following a review have taken the decision to close them. The bring sites to be closed in Biddulph are at Biddulph Valley Leisure Centre and Mill Hayes Sports Ground.

The review was taken as the contracts for the service, provision and maintenance of the sites comes to an end on the 31st October this year. Alternatives to closure that were considered were to procure new contracts or to reduce the number of sites from 27 to 10.

The amount of waste collected from bring recycling centres has steadily fallen (down 68%) since 2007 as the council have moved more towards collecting from households at the kerbside. The report states: "Initially neighbourhood recycling centres were developed as residents had few opportunities to recycle, as kerbside collection services were in their infancy. In recent years a number of sites have been lost as a result of re-development such as Wharf Road in Biddulph or as private landowners have withdrawn permission to have banks located on their land."

"All the materials collected on these sites can now be recycled through the council's kerbside recycling collection service, which is now available to all households within the district."

It is hoped that the amount of waste collected at the bring sites (385 tonnes in total) will be redirected by residents using the kerbside collection service so the council don't lose income from reduced tonnage allowances.



Smokers in Staffordshire are being urged to make 'Stoptober' a friends and family affair to help them quit smoking.

With latest figures showing that around 16 per cent of adults smoke in the county, Public Health England is urging residents to sign up together for the 28 day mass quit attempt - as research shows people are more likely to succeed if a friend or family member stops as well.

This year, Stoptober will be providing quitters with a personal touch from some of the nation's leading comedians - Bill Bailey, Rhod Gilbert, Al Murray and Shappi Khorsandi. Messages of support and encouragement will be sent straight to quitters' phones and emails throughout October.

Last year almost 3,000 people in Staffordshire signed up for the challenge, the highest number in the West Midlands.

Alan White, Staffordshire County Council's Cabinet Member for Health, Care and Wellbeing, said: "The long-term, chronic impact of smoking on people's health and quality of life is well documented, but smoking also costs society too. Not just through the effect of people seeing their loved ones suffer in later life - but in terms of the enormous costs to the NHS for smoking related healthcare."

"We know kicking the habit can be very difficult, but we would encourage everyone thinking of quitting to give it a go by signing up for Stoptober with a friend this year."

Staffordshire residents looking to give up smoking can now do so with help from a new one stop advice service. The Healthy Staffordshire Hub gives people information, advice and guidance on a range of health related topics such as, stopping smoking, cutting down on alcohol consumption, achieving a healthy weight, healthy eating and being active.

People can access the support by calling 0300 111 8006.

During Stoptober people can go online and search for 'Stoptober' to sign up to the 28 day challenge, where there are a range of support tools to choose from including email, text and an app.



Biddulph Men's over 60's group



Biddulph Men's over 60's group continues to grow thanks to a local council grant of £1000.

The group was under threat of closure earlier in the year due to lack of funding but the recent grant means they can now continue to meet into the foreseeable future.

Age UK set up the group for men over 60 to attend in 2012 at the Fire Station in Biddulph. Since then the group has grown, and become interesting and active in its' own right. It costs £2 to attend, and the group members have decided on a format of a 'social', lively chat etc., one week, with a topic of interest delivered on alternate weeks. Tea, coffee and biscuits always on the agenda!

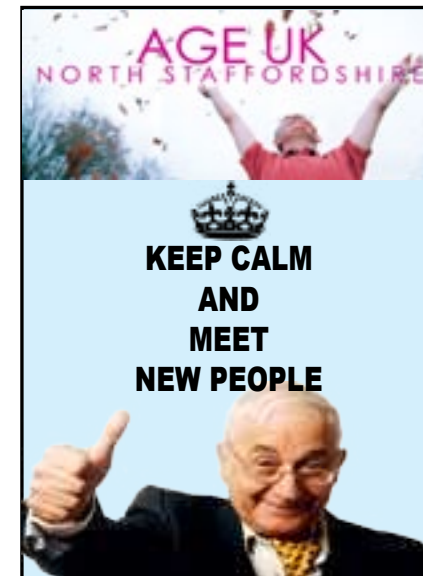
Any male over 60 is invited to come along - take a look at the programme for the rest of the year - you'll be inspired to come along to the Fire Station in Princess Street.

The group now meet every Friday between 10am and 12 noon. Any ideas on how to make the group interesting and fun are welcomed.

Programme :

October 2015

October 2nd: Suzanne Roberts will be telling us about the work of Action for Blind People



on Weapon's Warfare.

December 18th: Xmas Lunch

Look out for future programmes. Remember you can join us weekly, or you can come along to the bits that interest you. You'll always be welcome, and the kettle's always on!!

Pam Stewart: Co-ordinator: 07910 972 286, alternatively you can contact Jenny Bell or Margaret Parkinson on 01782 286209/200729 for more information and other activities on offer from Age UK.

Mike Carter Heating & Plumbing Engineer Over 30 years of experience

- Natural and LPG gas systems & commercial
- Boiler Breakdowns
- Design & Installation of full heating systems
- Bathroom suites designed and installed
- Full system flushing available
- Unvented systems serviced and installed
- Underfloor heating systems
- Home owner- landlord Gas Safety Certificates
- Static and towed caravans checked



Free estimates



Installed by an Advanced Vaillant installers

Subject to terms & conditions

Up to 10 years warranties

Tel: 01782 253582

Email: mike@mikecarter.co.uk

Mob: 07766265630

Website: www.mikecarter.co.uk

SW COTTON OPTOMETRIST
Spectacles & Contact Lenses
75 High Street, Biddulph
*Sight is beyond price.
Good vision isn't.*
**Designer Frames
Contact Lenses
Diabetic Retinal Photography
Friendly Family Business**
01782 519956
email: see@swcotton.com

NOW OPEN
LITTLE STARS
Children's Shop
26 High Street, Biddulph, ST8 6AP
(Previously Bodens/ Walleys Newsagents)
01782 519054
email: littlestarsemma@aol.co.uk
Family run business retailing high quality wooden toys & designer childrens clothing to age 9
Your Local Stockist For **Lelli Kelly Footwear**
Christmas Savings Club
Stockist of Wooden Toys From:
BIG JIGS **Hape** **Toy Fair**
Clothing from: **Kate** **Levi's** **3pm**

Cardiac Risk in the Young
Every week in the UK at least 12 apparently fit and healthy young people die of undiagnosed heart conditions
Free heart test
For anyone aged 14-35
To book visit www.testmyheart.org.uk or call CRY on 0203 691 0000
Date: 28th October 2015
Location: James Bateman Junior High School, Park Lane, Knypersley, Stoke on Trent, ST8 7AT



Biddulph Up In Arms

01782 523277

www.biddulphupinarms.com

Ciaran Algar CD launch

Weds Oct 14 (Town Hall)

Double BBC Radio 2 Folk Award winner and local hero performs material from his debut solo release 'The Final Waltz' accompanied by his young band. Support-Megan Dixon-Hood. £10 advance.

Greg Murray and the Seven Wonders CD launch

Sat Oct 24 (Biddulph Arms) (FREE)

Another talented local singer-songwriter launching a new live CD. Melodic, joyous, uplifting music from the gregarious Mr Murray and his large band. FREE.



The Goat Roper Rodeo Band

Weds Oct 28 (Biddulph Arms)

Hugely entertaining North Wales trio making a welcome return with their aching harmonies and cosmic country blues. Best live act nominees in the Spiral Earth awards and promoting a new Abbey Road Studios' recording. Support- Hank's Company Band. £10/£8 advance.



Honey Ryder

Weds Nov 4 (Biddulph Arms)

After their success the O2's Country 2 Country festival, a live session on Bob Harris' radio show and three nominations at the forthcoming British Country Music Awards we are delighted to welcome this fabulous band to Biddulph for the first time. £10/£8 advance.



Danny and the Champions of the World

Fri Nov 13 (Town Hall)

The best live band in the UK at the moment? Danny George Wilson and the boys have been wowing audiences nationwide with their superb musicianship and their feel good party sound. £12.



Oysters 3

(John Jones, Alan Prosser, Ian Telfer)

Sat Nov 21 (Town Hall)

Advance booking recommended as the three founder members

of the mighty Oysterband give an insight into the band's dramatic (and sometimes comic) history and play acoustically some of the best songs of their career. £15.



Jez Lowe and Steve Tilston

Weds Nov 25 (Biddulph Arms)

Another hot ticket as two of the folk scene's finest songwriters join forces for an evening of fine music and banter. £12/10 advance.



Bob Fox

Weds Dec 9

(Biddulph Arms)

As we approach our 30th anniversary we welcome back one of Biddulph's favourite performers. £12/10 advance



All gigs at the Arms unless otherwise stated, tickets available from A&A Music, Congleton and Biddulph Councils Connect, tickets bought via external links will be subject to a booking fee. Seats may be reserved by contacting organiser Craig Pickering 01782 523277. www.biddulphupinarms.com www.wegotickets.com

HOLLINSHEAD COACHES

WHARF ROAD, BIDDULPH, ST8 6AG

OUR NEW HOLIDAY BROCHURE IS NOW OUT

| | | |
|-----------------------------------|--|--------|
| Saturday 10 th October | LEEDS | £14 |
| Monday 26 th October | WELSHPOOL - COED Y DINAS COUNTRY STORE..... | £12 |
| Tuesday 27 th October | BLACKPOOL ILLUMINATIONS..... | £14 |
| Weds 28 th October | CORONATION STREET TOUR | £32 |
| Thursday 29 th October | NOTTINGHAM | £12.50 |
| Friday 30 th October | BURY MARKET | |
| Thursday 3 rd December | CHRISTMAS LUNCH and Entertainment LINDUM HOTEL, ST ANNES | £30 |

Holidays

| | |
|---|------|
| 2 nd - 6 th November : LLANDUDNO - Kensington Hotel, Turkey & Tinsel (with Church Lawton Retirement Club) | £283 |
| 20 th - 22 nd November : LONDON - Gouman Tower Hotel, (with Brown Edge Playgroup) | £200 |
| 23 rd - 27 th November : WEYMOUTH - Crown Hotel, Turkey & Tinsel | £297 |
| 27 th - 29 th November : LONDON, Park Plaza Riverbank Hotel | £195 |
| 7 th - 11 th December : EASTBOURNE - New Wilmington Hotel, Turkey & Tinsel | £275 |

Please telephone Stoke on Trent (01782) 512209 or after hours 512235 to book your seats.



Rotary Biddulph Rewards Swimmers



President of Rotary Biddulph, David Ash, presenting the 2015 Acorn Group Award to Jennie Cook and Dave Lacey of Biddulph Amateur Swimming Club

A young person who has performed an act of unusual perseverance, courage or service to others.

President of Biddulph Rotary, Peter Davenport, presented the award certificates and cheques at the awards ceremony which was held in the Victoria Centre in May, 2015.

The Group Award went to the Biddulph Swimming Club, but unfortunately no representative was available on the night to receive it, and the award was made at a regular meeting of Rotary Biddulph.

Presenting the award, new President, David Ash, said that the Biddulph Amateur Swimming Club not only provided excellent opportunities for youngsters but had established the club as a centre of excellence with a reputation known throughout the Midlands and North of England, and was a deserving winner of the group award.

Accepting the award, Dave Lacey said how pleased he was that the club had been recognised for the achievements to which all its members contributed, but also that the money would make a useful contribution to club funds. He went on to say that the annual turnover of the club is about £38,000 so that any contributions are very welcome.

Biddulph Rotary Club



Biddulph Rotary continues Garden maintenance

Biddulph Rotary took over the maintenance of the 'Garden of Tranquillity' and other areas which they had set up between St. Lawrence's Church and the cemetery, from the council, in 2010. Since then, work has been on-going, not only to maintain and develop the existing gardens, but to improve the areas leading to the new cemetery. This approach has certainly paid off since the Rotary work has helped the 'Biddulph-in-Bloom' organisation, headed by Hilda Sheldon, to get the prestigious awards in the 'Heart of England' and the National 'In Bloom' competitions.



Photo shows (L to R) Rotarians Peter Swann, Alan Dale, Tony Birchall, John Clewlow, Rod Deaville and Ken Harper, working in the Wild Flower garden

This year, as part of its community work, Rotary is again helping to maintain this high standard, so during recent weekends, groups of Biddulph Rotarians have been working to maintain the gardens and Bateman Walk, and whilst Past President, Gerry Machin, worked on the Dahlia beds around the Gazebo, other Rotarians tackled areas like the 'Wild Flower' garden, which had fallen into disrepair. It had been decided that a drastic overhaul was needed, so using a rotovator the dead and overgrown areas were ploughed up and re-planted with wild flowers. This has been successful and, by the time that the judges return this year, there will be another colourful display.

Some planning and design work has already been done on the provision of another gazebo in the new cemetery area and it is hoped that work will be able to start on this next year.

Guardian Property Services

The Handy Man

Reliable Property Maintenance and Handyman Service

- Painting & Decorating
- Tiling
- Fencing
- Power Washing
- Gutter Replacement
- Gutter Cleaning
- Conservatory Cleaning
- Gardening
- Lawn Mowing Service



Free Estimates and Advice

Call: 01782 523151 (after 5pm)
Mobile: 07866 626 766



Advanced formula deep - dry - cleaning
for your carpets, curtains & upholstery

See your carpets and furnishings looking their brightest and best!



Quick drying
No shrinkage
Expert stain removal
Outstanding results!



The easy way to brighter carpets

Over time your carpets collect all manner of dust and dirt. Your vacuum cleaner can remove only some of this. A Stainbusters deep clean breaks down and lifts the stuck on dirt to leave your carpets clean, hygienic and smelling fresh. Our advanced cleaning system leaves no dirt attracting residues to ensure that your carpets stay clean and bright much longer...



Curtains and Blinds

We dry curtains where they hang!
No fuss taking down and putting back curtains. No bare windows.
Very popular service. Call for prices



Carpets and Rugs

Say goodbye to marks and traffic lanes. Expertly cleaned and dry in one hour.
3 rooms £92, 2 rooms £70, 1 room £47
(Hall stairs and landing = 1 room)
(Lounge/diner = 2 rooms)



Leather

Leather suites cleaned, conditioned and protected from £99
Prevents drying and cracking.



Upholstery

All types of upholstery professionally cleaned. Dry in hours not days.
5 seater suite £97



Call our helpline for an appointment
01782 775771

Experts in carpet and fabric care since 1998

Choice, Value & Service...



- ✓ The area's largest independent bed specialist
- ✓ Divans, Bed Frames & Bedroom Furniture
- ✓ Mattresses
- ✓ Pillows, Mattress Protectors & Bed Linen

**OPEN
7 DAYS**



FREE DELIVERY • ASSEMBLY • REMOVAL

The
**Victoria
bed
Company**



Victoria Mill, Foundry Bank,
Congleton, CW12 1EE
(Opposite the Leisure Centre)
Tel: 01260 290068

www.thevictoriabedcompany.co.uk