

Oklahoma Corporation Commission
Oil & Gas Conservation Division
Post Office Box 52000
Oklahoma City, Oklahoma 73152-2000
Rule 165: 10-3-25

Form 1002A

API No.: 35043230870000

Completion Report

Spud Date: June 14, 2009

OTC Prod. Unit No.: 043-203161

Drilling Finished Date: July 24, 2009

1st Prod Date: September 06, 2009

Completion Date: August 13, 2009

Drill Type: HORIZONTAL HOLE

Well Name: MARION 1-29H

Purchaser/Measurer: DCP MIDSTREAM

Location: DEWEY 32 19N 18W
NW NW NW NE
2390 FSL 200 FWL of 1/4 SEC
Derrick Elevation: 2040 Ground Elevation: 2026

First Sales Date: 09/26/2009

Operator: D & J OIL COMPANY INC 17713
P.O. Box 10129
4720 W GARRIOTT
ENID, OK 73706-0129

Completion Type	
X	Single Zone
	Multiple Zone
	Commingled

Location Exception	
Order No	
572005	

Increased Density	
Order No	
There are no Increased Density records to display.	

Casing and Cement							
Type	Size	Weight	Grade	Feet	PSI	SAX	Top of CMT
CONDUCTOR	30	94		40		32	SURFACE
SURFACE	13 3/8	48	H-40	366	175	295	SURFACE
INTERMEDIATE	9 5/8	40 & 36	J & K-55	4112	700	325	SURFACE
PRODUCTION	7	26	N-80	8430	1100	200	7280

Liner								
Type	Size	Weight	Grade	Length	PSI	SAX	Top Depth	Bottom Depth
LINER	4 1/2	11.6	P110	11002	0	0	0	11002

Total Depth: 11084

Packer	
Depth	Brand & Type
There are no Packer records to display.	

Plug	
Depth	Plug Type
There are no Plug records to display.	

Initial Test Data										
Test Date	Formation	Oil BBL/Day	Oil-Gravity (API)	Gas MCF/Day	Gas-Oil Ratio Cu FT/BBL	Water BBL/Day	Pumpin or Flowing	Initial Shut-In Pressure	Choke Size	Flow Tubing Pressure
Sep 06, 2009	COTTAGE GROVE	33	46	300	9090	275	FLOWING	1100	24/64	200

Completion and Test Data by Producing Formation		
Formation Name: COTTAGE GROVE	Code: 405CGGV	Class: OIL
Spacing Orders		Perforated Intervals
Order No	Unit Size	From To
82286	640	8174 11084
Acid Volumes		Fracture Treatments
There are no Acid Volume records to display.		FRAC WITH 8,271 BBLs 4% KCL IN X-LINKED GEL WITH 592 TONS CO2 AND 571,000# 20/40

Formation	Top
BASE HEEBNER	6690
TONKAWA SAND	7153
UPPER AVANT MARKER	7605
COTTAGE GROVE SAND	7757

Were open hole logs run? No

Date last log run:

Were unusual drilling circumstances encountered? No

Explanation:

Other Remarks
BOTTOM WINDOW IN 7" CASING THAT WAS SET AT 63.40 DEG INCL. IS AT 8094' MD (7763' TVD) IN COTTAGE GROVE SAND. LATERAL LENGTH CALCULATED FROM BOTTOM OF WINDOW TO TD. ENTRY INTO COTTAGE GROVE WAS 8083' MD AND 7757' TVD AND CASED OFF. OPEN HOLE FORMATION PACKERS RAN ON 4 1/2" CASING IN LATERAL COMPLETION AT 10635', 10219', 9799', 9384', 8968', 8589', 8174', AND 8158' MD WITH FRAC PORTS BETWEEN PACKERS. FRAC PORTS ARE LOCATED AT 10783', 10429', 10020', 9669', 9179', 8799', 8345' MD.

Lateral Holes
Sec: 29 TWP: 19N RGE: 18W County: DEWEY
SW SE SE NE
106 FSL 346 FEL of 1/4 SEC
Depth of Deviation: 6757 Radius of Turn: 1033 Direction: 25 Total Length: 2990
Measured Total Depth: 11084 True Vertical Depth: 7753 End Pt. Location From Release, Unit or Property Line: 346

FOR COMMISSION USE ONLY
Status: Accepted
1109198

API NO. **043-23087**
 OTC PROD. UNIT NO. **043-203161**

PLEASE TYPE OR USE BLOCK LETTERS
 NOTE: Attach copy of original 1002A



RECEIVED
 Form 1002A Rev. 2007

JAN 26 2011

OKLAHOMA CORPORATION COMMISSION

TYPE OF DRILLING OPERATION
 STRAIGHT HOLE DIRECTIONAL HOLE HORIZONTAL HOLE

SPUD DATE **6/14/2009**
 DRLG FINISHED **7/24/2009**
 WELL COMPLETION **8/13/2009**
 1ST PROD DATE **9/6/2009**
 RECOMP DATE

COUNTY **Dewey** SEC **32** TWP **19N** RGE **18N**

LEASE NAME **Marion** WELL NO. **1-29H**

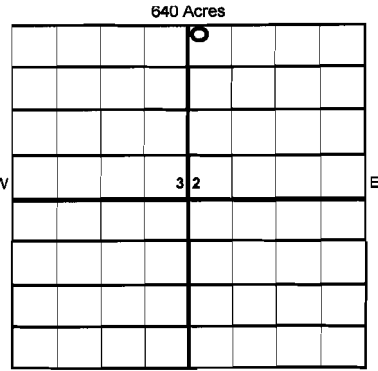
SHL **NW 1/4** FSL **2390** FWL OF 1/4 SEC **200**

ELEVATION **2040'** Ground **2026'** Latitude if Known **36°05'09.6"N** Longitude if Known **99°08'27.4"W**

OPERATOR NAME **D & J Oil Company, Inc.** OTC/OCC OPERATOR NO. **17713-0**

ADDRESS **P.O. Box 10129**

CITY **Enid** STATE **Oklahoma** ZIP **73706**



COMPLETION TYPE

SINGLE ZONE

MULTIPLE ZONE
 Application Date

COMMINGLED
 Application Date

LOCATION EXCEPTION ORDER NO. **572005**

INCREASED DENSITY ORDER NO.

CASING & CEMENT (Form 1002C must be attached)

TYPE	SIZE	WEIGHT	GRADE	FEET	PSI	SAX	TOP OF CMT	
Conductor	30"	94#		40'	NA	32	SURFACE	
Surface	13 3/8"	48#	H-40	366'	175#	295	SURFACE	
Intermediate	9 5/8"	40 & 36#	J & K-55	4112'	700#	325	SURFACE	
Production	7"	26#	N-80	8430'	1100#	200	7280'	
Liner	4 1/2"	11.6#	P 110	11,002'	NA	NA	NA	
							TOTAL DEPTH	11,084'

(SEE REMARKS FOR PACKERS)
 PACKER @ _____ BRAND & TYPE _____ PLUG @ _____ TYPE _____ PLUG @ _____ TYPE _____
 PACKER @ _____ BRAND & TYPE _____ PLUG @ _____ TYPE _____ PLUG @ _____ TYPE _____

COMPLETION & TEST DATA BY PRODUCING FORMATION **405C60V**

FORMATION	SPACING & SPACING ORDER NUMBER	CLASS: Oil, Gas, Dry, Inj, Disp, Comm Disp, Svc	PERFORATED INTERVALS	ACID/VOLUME Fracture Treatment (Fluids/Prop Amounts)
Cottage Grove	640 ac, 82286	OIL	(see remarks) 8174' - 11,084' OA	F w/ 8271 BBLS 4% KCl in X-linked Gel w/ 592 tons CO2 & 571,000# 20-40

Request minimum gas allowable (165:10-17-7) Gas Purchaser/Measurer **DCP Midstream** 1st Sales Date **9/26/2009**

INITIAL TEST DATA

INITIAL TEST DATE	9/6/2009
OIL-BBL/DAY	33
OIL-GRAVITY (API)	46
GAS-MCF/DAY	300
GAS-OIL RATIO CU FT/BBL	9090
WATER-BBL/DAY	275
PUMPING OR FLOWING	Flwg
INITIAL SHUT-IN PRESSURE	1100#
CHOKE SIZE	24/64
FLOW TUBING PRESSURE	200 #

A record of the formations drilled through, and pertinent remarks are presented on the reverse. I declare that I have knowledge of the contents of this report and am authorized by my organization to make this report, which was prepared by me or under my supervision and direction, with the data and facts stated herein to be true, correct, and complete to the best of my knowledge and belief.

Signature: NAME (PRINT OR TYPE) **Craig Roberts** DATE _____ PHONE NUMBER **(580)242-3636**

P.O. Box **10129** Enid Oklahoma **73706** craig@dioil.com
 ADDRESS CITY STATE ZIP EMAIL ADDRESS

PLEASE TYPE OR USE BLACK INK ONLY
FORMATION RECORD

Give formation names and tops, if available, or descriptions and thickness of formations drilled through. Show intervals cored or minimum tested.

LEASE NAME Marion

WELL NO. 1-29H

NAMES OF FORMATIONS	TOP
BASE OF HEEBNER	6690' TVD
TONKAWA SAND	7153' TVD
UPPER AVANT MARKER	7605' TVD
COTTAGE GROVE SAND	7757' TVD

FOR COMMISSION USE ONLY

ILD on file YES NO

APPROVED _____ DISAPPROVED _____

2) Reject Codes _____

Were open hole logs run? yes no

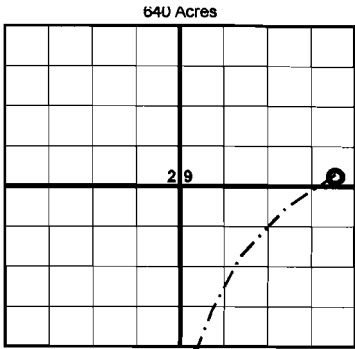
Date Last log was run _____

Was CO₂ encountered? yes no at what depths? _____

Was H₂S encountered? yes no at what depths? _____

Were unusual drilling circumstances encountered? yes no
If yes, briefly explain. _____

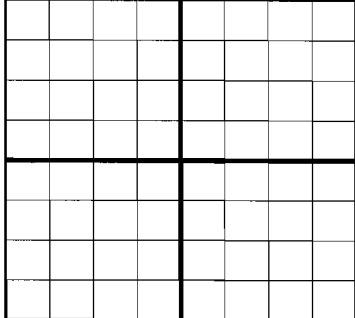
Other remarks:
**** Bottom of window in 7" csg that was set at 63.40 deg incl. is at 8094' MD (7763 TVD) in Cottage Grove Sand. Lateral length calculated from bottom of window to TD. Entry into Cottage Grove was 8082' MD and 7757' TVD and cased off.**
Openhole formation packers ran on 4 1/2" csg in lateral completion at 10635', 10219,9799,9384,8968,8589,8174, & 8158 MD with frac ports between packers. Frac ports are located at 10783,10429,10020,9669,9179,8799,8345 MD.



If more than three drainholes are proposed, attach a separate sheet indicating the necessary information.

Direction must be stated in degrees azimuth. Please note, the horizontal drainhole and its end point must be located within the boundaries of the lease or spacing unit.

Directional surveys are required for all drainholes and directional wells.



BOTTOM HOLE LOCATION FOR DIRECTIONAL HOLE

SEC	TWP	RGE	COUNTY	Feet From 1/4 Sec Lines	
1/4	1/4	1/4	1/4	FSL	FWL
Measured Total Depth		True Vertical Depth		BHL From Lease, Unit, or Property Line:	

BOTTOM HOLE LOCATION FOR HORIZONTAL HOLE: (LATERALS)

LATERAL #1

SEC	TWP	RGE	COUNTY	Feet From 1/4 Sec Lines	
29	19N	18W	DEWEY	106.32'	FSL 345.54' FWL
S/2 1/4 SE		1/4 SE 1/4 NE 1/4		Total Length	
Depth of Deviation		Radius of Turn		Direction	
6757'		1033'		25	
Measured Total Depth		True Vertical Depth		End Pt Location From Lease, Unit or Property Line:	
11,084'		7753.79'		345.54' FEL	

LATERAL #2

SEC	TWP	RGE	COUNTY	Feet From 1/4 Sec Lines	
1/4	1/4	1/4	1/4	FSL	FWL
Depth of Deviation		Radius of Turn		Direction	
Measured Total Depth		True Vertical Depth		End Pt Location From Lease, Unit or Property Line:	

LATERAL #3

SEC	TWP	RGE	COUNTY	Feet From 1/4 Sec Lines	
1/4	1/4	1/4	1/4	FSL	FWL
Depth of Deviation		Radius of Turn		Direction	
Measured Total Depth		True Vertical Depth		End Pt Location From Lease, Unit or Property Line:	