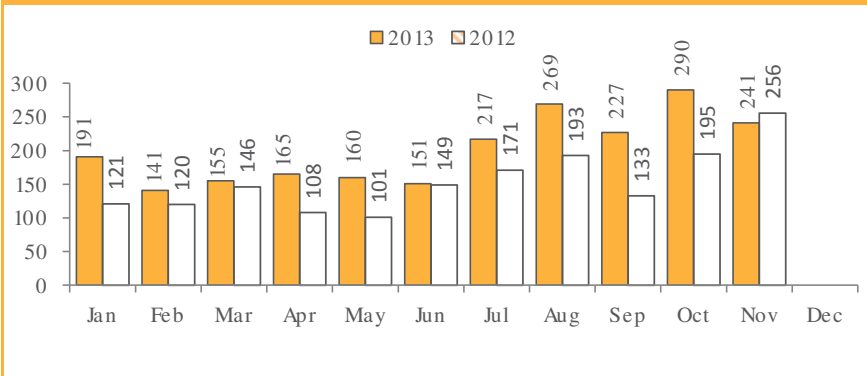


# Berks County Report-November 2013

## Pennsylvania 2-1-1 East

### CALL VOLUME



### REFERRAL SOURCE

Agency/Organization	46
Flyer/Brochure/Poster	20
Friend/Relative	16
Prior use	11
Electronic media	6
Church	4
Billboard	1
Campaign meeting	1
School	1
Media/TV/Radio	1
Medical services	1

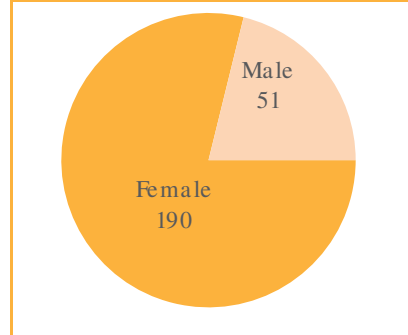
### ZIP CODE REPORT

19601	60	19608	4
19602	49	19540	4
19604	29	19518	3
19606	19	19512	3
19508	11	19609	2
19607	9	19610	2
19603	8	19506	2
19611	8	19507	2
19565	7	19541	2
19560	5	19533	1
19605	5	19530	1

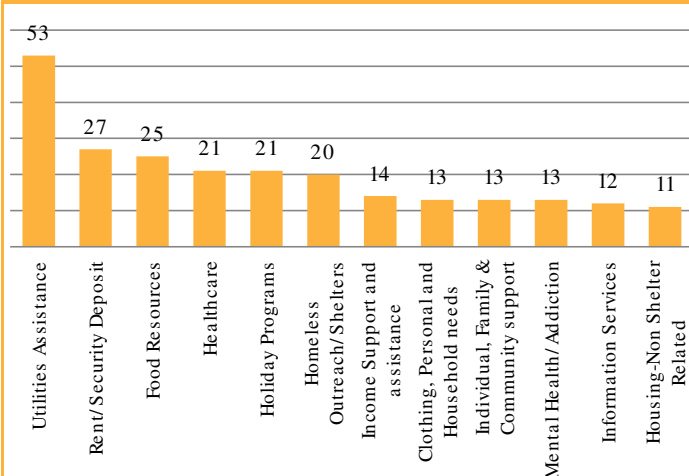
### TOP AGENCY REFERRALS

The Salvation Army of Reading	27
Department of Welfare	26
Greater Berks Food Bank	14
Catholic Charities	9
MidPenn Legal Services	5
Pathstone Corporation	4
Family Promise	4
Social Security	3
Hope Rescue Mission	3
Opportunity House	3
Berks Encore	3

### GENDER REPORT



### Top Needs



### Call Frequency

