



PHOTO: LEAH HORVATH

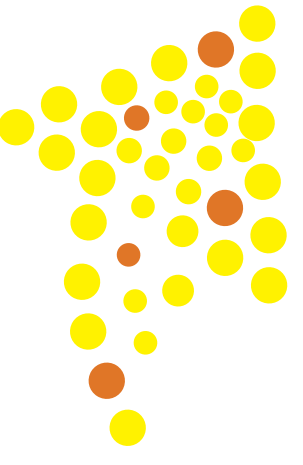
TICKETS GO ON SALE SEPTEMBER 3, 2010
FOR MORE INFORMATION OR TO PLACE AN ORDER PLEASE CALL 651.282.3115
FAX COMPLETED ORDERS TO 651.215.2135

PHOTO: LEAH HORVATH

NEW! CAREERS WEBSTE!
ORDWAY INTERACTIVE
EXPLORE THE CAREERS
WITHIN THE ORDWAY
WITH YOUR STUDENTS USING THE
NEW INTERACTIVE CAREERS
WEBSITE. STUDENTS CAN
LEARN ABOUT BEING AN
ARTS ADMINISTRATOR, A STAGE
HEAD, MANAGER, OR THE PRESIDENT
AND CEO!
VISIT THE INTERACTIVE
CAREERS WEBSITE AT
ORDWAY.ORG/MA
PAGES
STUDY GUIDES
THE ORDWAY'S
GUIDES ARE FILLED WITH
INFORMATION ON
PERFORMING ARTS OR
COMPANY, THE ART FORM,
VOCABULARY WORDS AND
GRADE-APPROPRIATE
ACTIVITIES. ACTIVITIES ARE
DESIGNED IN ACCORDANCE
WITH THE MINNESOTA
ARTS STANDARDS.
THE ORDWAY SENDS STUDY
GUIDES TO EDUCATORS THREE
TO FOUR WEEKS PRIOR TO THE
PERFORMANCE.

"The study guide was
VERY user friendly
and easy to use with
students. We'll put
together - thanks for the
wonderful resource!"
MARJORIE HOLMES
ZANEWOOD ELEMENTARY SCHOOL

prepare your students



BE PART OF THE ART
Create a class installation, a collaborative
piece of artwork, a parade unit or select
the best creations from your classroom
and share them at the 2011 Flint Hills
International Children's Festival. The
Ordway's Education program has many
opportunities for students to create and
exhibit visual artwork. To find out more
about how your class or students can be
involved please contact Kristin Wiegman
at 651.282.3205 or kwiegman@ordway.org.



PHOTO: LEAH HORVATH

WEST AFRICAN MOVEMENT
June 2, 2011 9:15am & 10:30am
Suggested Grades 3-8
Explore the movements that became
the fundamentals for hip-hop, jazz, and
many other modern dance styles through
an experiential class on traditional West
African dance with Fatowu Sayibu, director
of Tymba Dance Company.

LATIN SOCIAL DANCE
June 2, 2011 9:15am & 10:30am
Suggested Grades 3-6
Covles Center instructor Giselle Mejia, will
teach a wide variety of social dances born
out of Latin America. Styles include salsa,
Rueda, bolero, cubana and mambo.

MEXICAN CULTURE & DANCE
June 1, 2011 9:15am & 10:30am
Suggested Grades 2-6
Engage students in this all abilities dance
workshop as they learn the traditions,
history and art of dance of the Mexhca
(Aztec) culture with Kapijilli Yaceoxtli.

LATIN AMERICAN FOLKLOIC MUSIC
May 31, 2011 9:15am & 10:30am
Suggested Grades 2-6
Explore the music and instruments of Latin
American countries through interactive
demonstrations and instrument try-outs!

\$3 GLOBAL ARTS WORKSHOPS
Engage your students in hands-on Global
Arts Workshops during the Flint Hills
International Children's Festival. These
one-hour workshops are taught by Twin
Cities artists, and cost just \$3 per student!

MAIL OR FAX
All mailed and faxed orders
arriving on or before Sept 3,
2010 will be processed at the
end of the day, in the order
they are received.
Education Sales
Performing Arts
345 Washington Street
Saint Paul, MN 55102
Fax: 651.215.2135

PHONE
Starting Sept 3, 2010
651.282.3115 - Education
651.282.3100 - TTY

PHONE
Starting Sept 3, 2010
651.282.3115 - Education
651.282.3100 - TTY

AREA SUBSIDY AMOUNT
100%:
Minneapolis and Saint Paul
Public School Districts
Up to \$180.00 per bus;
Seven County Metro including
Anoka, Carver, Dakota,
Henriepin, Ramsey,
Scott & Washington Counties
Up to \$450.00 per bus;
Outside Seven County Metro

ORDERING TICKETS
● All performances are one hour in length, unless otherwise noted. Please arrive 20 minutes prior to your scheduled performance time.
● All performances are subject to change and cancellation. You will be notified of any performance changes.
● All adults attending along with the students. We request a ratio of one chaperone for every 10-15 students.
● Include any accommodation needs. The Ordway provides wheelchair seating, infrared listening system units, ASL interpretation, and audio description. Two-week notice is required for any accommodation needs.

TICKET INFORMATION
● Tickets go on sale Friday, Sept 3, 2010 at 7am. Education Sales, 651.282.3115.
● Educators must contact AND REFUNDS
ORDER CHANGES
● If Education Sales is not contacted, the school will be held responsible for the full payment of the order. Refunds will be given up to six weeks prior to the performance, provided that general admissions; groups are assigned seats by seating chart based on size of group, and accommodations needs and grade level.

PERFORMANCE INFORMATION
● All performances must be paid in full six weeks prior to the performance date or a late fee may be assessed.
● Determine the performances and number of tickets your group needs. Total number of tickets ordered must include all adults attending along with the students. We request a ratio of one chaperone for every 10-15 students.
● Include any accommodation needs. The Ordway provides wheelchair seating, infrared listening system units, ASL interpretation, and audio description. Two-week notice is required for any accommodation needs.



AREA SUBSIDY AMOUNT
100%:
Minneapolis and Saint Paul
Public School Districts
Up to \$180.00 per bus;
Seven County Metro including
Anoka, Carver, Dakota,
Henriepin, Ramsey,
Scott & Washington Counties
Up to \$450.00 per bus;
Outside Seven County Metro

ORDER CHANGES
● Educators must contact AND REFUNDS
ORDER CHANGES
● If Education Sales is not contacted, the school will be held responsible for the full payment of the order. Refunds will be given up to six weeks prior to the performance, provided that general admissions; groups are assigned seats by seating chart based on size of group, and accommodations needs and grade level.

PERFORMANCE INFORMATION
● All performances must be paid in full six weeks prior to the performance date or a late fee may be assessed.
● Determine the performances and number of tickets your group needs. Total number of tickets ordered must include all adults attending along with the students. We request a ratio of one chaperone for every 10-15 students.
● Include any accommodation needs. The Ordway provides wheelchair seating, infrared listening system units, ASL interpretation, and audio description. Two-week notice is required for any accommodation needs.

TICKET INFORMATION
● Tickets go on sale Friday, Sept 3, 2010 at 7am. Education Sales, 651.282.3115.
● Educators must contact AND REFUNDS
ORDER CHANGES
● If Education Sales is not contacted, the school will be held responsible for the full payment of the order. Refunds will be given up to six weeks prior to the performance, provided that general admissions; groups are assigned seats by seating chart based on size of group, and accommodations needs and grade level.

PERFORMANCE INFORMATION
● All performances must be paid in full six weeks prior to the performance date or a late fee may be assessed.
● Determine the performances and number of tickets your group needs. Total number of tickets ordered must include all adults attending along with the students. We request a ratio of one chaperone for every 10-15 students.
● Include any accommodation needs. The Ordway provides wheelchair seating, infrared listening system units, ASL interpretation, and audio description. Two-week notice is required for any accommodation needs.

Non-Profit Org.
PAID U.S. Postage
Permit No. 1207
Saint Paul, MN
55102



2010.2011
be uplifted

\$3 TICKETS AND
BUS REIMBURSEMENT
FOR ALL SCHOOLS

ORDWAY | Education

ORDWAY | Education
345 Washington Street, Saint Paul, MN 55102
\$3 TICKETS AND BUS REIMBURSEMENT FOR ALL SCHOOLS

ORDWAY | Education
345 Washington Street, Saint Paul, MN 55102

Ordway's education on-sale

The Ordway presents its 2010-2011 Education series of performances, workshops and professional development opportunities.
September 3, 2010 is your first chance to purchase tickets to the 2011 Flint Hills International Children's Festival! Tickets will go on sale at 7:00am by phone. Mailed and faxed orders arriving on or before September 3 will be processed at the end of the day in the order they are received.
There is still availability for many of the Performing Arts Classrooms Series performances that went on sale in May. Performances sell out quickly, so please be sure that you have alternative choices selected. Visit the website for updated availability at ordway.org/education/ performances.

| MONTH | SUGGESTED GRADES |
|---|--------------------------------------|
| October November/Packer Dance | 6 - 12 |
| December Tempo Libre CONTRA-TIEMPO | 2 - 8 4 - 12 |
| January Angélique Kidjo | 4 - 12 |
| February Terrance Simien & The Zydeco Experience | K - 6 |
| April BeijingDance/LDTX | 6 - 12 |
| May TU Dance | 4 - 12 |
| Festival May 30-June 3 Corbhan the Dinosaur The Man Who Planted Trees Oyu Oro Afro-Cuban Dance Ensemble Festival Surprise | 2 - 8 1-4 preK - 6 preK - 2 |

The Ordway Bus Reimbursement for all Schools!
All schools attending one of the Ordway's education performances are eligible for our bus reimbursement program. See the bus information section for more details.

Education at the Ordway is sponsored by
Fedd C. and Katherine B. Andersen Foundation
NATIONAL MINNESOTA HIGH ARTS COUNCIL
NATIONAL MINNESOTA STATE ARTS BOARD
MILLS BANK OF MINNESOTA
3M

Education at the Ordway is sponsored by
Fedd C. and Katherine B. Andersen Foundation
NATIONAL MINNESOTA HIGH ARTS COUNCIL
NATIONAL MINNESOTA STATE ARTS BOARD
MILLS BANK OF MINNESOTA
3M

2010-2011 Education at the Ordway Order Form

PLEASE PRINT CLEARLY, PLEASE KEEP A COPY OF THIS FORM FOR YOUR RECORDS. THE ORDWAY WILL KEEP THE ORIGINAL.

School or HomeSchool (full name) _____
Contact/Liaison Name _____
School Address _____
City, State, ZIP _____
School Phone _____
School Fax _____
Contact's Alternative Phone _____
Contact's E-mail (for confirmation) _____
STUDY GUIDE TYPE (please choose one)
 "Go Green" online study guide Traditional printed study guide
 I want to receive Education updates via e-mail. These include ticket updates as well as special offers and events!

Principal's Name _____
Principal's E-mail _____
School District _____
School Start Time _____ AM School Release Time _____ PM
For orders that DO NOT include payment in full, a principal's signature is required agreeing to payment and ticket policies below.
I understand that payment in full must be received by the Ordway by six weeks prior to all performances. If payment is not received by these deadlines, late fees may be assessed.

PRINCIPAL'S SIGNATURE _____
DATE _____
OR:
 ENCLOSED IS MY CHECK PAYABLE TO THE ORDWAY
CHARGE TO MY ACCOUNT
 VISA AMEX MasterCard DISCOVER
Card Number _____
Exp. Date _____
Signature _____

PLEASE DESCRIBE AND INDICATE THE NUMBER OF PATRONS WITH ANY ACCESS ACCOMMODATION NEEDS BELOW
 Wheelchair patron access ASL Interpreter Infrared Hearing Device
 Audio description Other, please specify _____
Alternative performance selections
1 _____ Date _____ Time _____
2 _____
3 _____

TICKETS GO ON SALE SEPTEMBER 3, 2010
FOR MORE INFORMATION OR TO PLACE AN ORDER PLEASE CALL 651.282.3115
FAX COMPLETED ORDERS TO 651.215.2135
ORDWAY | Education

2010-2011 Performing Arts Classroom Season

TICKET ORDERS SHOULD INCLUDE ALL STUDENTS, CHAPERONES, AND EDUCATORS. UNLESS OTHERWISE NOTED SEATING CAPACITY FOR EACH PERFORMANCE IS 1800.

EVENT | SUGGESTED GRADE LEVEL | GRADE LEVEL | # OF SEATS | X\$3 | TOTAL

| | | | | | |
|--|-------------|------|--|------|--|
| Bridgman/Packer Dance | 1,600 seats | 6-12 | | X\$3 | |
| Wed. Oct. 13 at 10:30am | | | | | |
| Tiempo Libre | | 2-8 | | X\$3 | |
| Tue. Nov. 16 at 10:30am | | 2-8 | | X\$3 | |
| Wed. Nov. 17 at 10:30am | | 2-8 | | X\$3 | |
| Wed. Nov. 17 at 12:30pm | | 2-8 | | X\$3 | |
| CONTRA-TIEMPO | | 4-12 | | X\$3 | |
| Thurs. Nov. 18 at 10:30am | | 4-12 | | X\$3 | |
| Thurs. Nov. 18 at 12:30pm | | 4-12 | | X\$3 | |
| Fri. Nov. 19 at 10:30am | | 4-12 | | X\$3 | |
| Angélique Kidjo | | 4-12 | | X\$3 | |
| Thurs. Jan. 20 at 10:30am | | | | | |
| Terrance Simien & The Zydeco Experience | | K-6 | | X\$3 | |
| Mon. Feb. 14 at 10:30am | | K-6 | | X\$3 | |
| Mon. Feb. 14 at 12:30pm | | K-6 | | X\$3 | |
| Tue. Feb. 15 at 10:30am | | K-6 | | X\$3 | |
| Tue. Feb. 15 at 12:30pm | | K-6 | | X\$3 | |
| Wed. Feb. 16 at 10:30am | | K-6 | | X\$3 | |
| Wed. Feb. 16 at 12:30pm | | K-6 | | X\$3 | |

| | | | | | |
|---------------------------|--|------|--|------|--|
| BeijingDance/LDTX | | 6-12 | | X\$3 | |
| Wed. April 6 at 10:30am | | 6-12 | | X\$3 | |
| Wed. April 6 at 12:30pm | | 6-12 | | X\$3 | |
| Thurs. April 7 at 10:30am | | 6-12 | | X\$3 | |
| Thurs. April 7 at 12:30pm | | 6-12 | | X\$3 | |

| | | | | | |
|-------------------------|--|------|--|------|--|
| TU Dance | | 4-12 | | X\$3 | |
| Wed. May 4 at 10:30am | | 4-12 | | X\$3 | |
| Wed. May 4 at 12:30pm | | 4-12 | | X\$3 | |
| Thurs. May 5 at 10:30am | | 4-12 | | X\$3 | |
| Thurs. May 5 at 12:30pm | | 4-12 | | X\$3 | |

| | | | | | |
|------------------------------|--|-----|--|------|--|
| Corbrian the Dinosaur | | 2-8 | | X\$3 | |
| Tue. May 31 at 12:30pm | | 2-8 | | X\$3 | |
| Wed. June 1 at 10:30am | | 2-8 | | X\$3 | |
| Wed. June 1 at 12:30pm | | 2-8 | | X\$3 | |
| Thurs. June 2 at 10:30am | | 2-8 | | X\$3 | |
| Thurs. June 2 at 12:30pm | | 2-8 | | X\$3 | |
| Fri. June 3 at 10:30am | | 2-8 | | X\$3 | |
| Fri. June 3 at 12:30pm | | 2-8 | | X\$3 | |

| | | | | | |
|----------------------------------|-----------|-----|--|------|--|
| The Man Who Planted Trees | 230 seats | 1-4 | | X\$3 | |
| Tue. May 31 at 9:15am | | 1-4 | | X\$3 | |
| Tue. May 31 at 11:15am | | 1-4 | | X\$3 | |
| Wed. June 1 at 11:15am | | 1-4 | | X\$3 | |
| Thurs. June 2 at 9:15am | | 1-4 | | X\$3 | |
| Thurs. June 2 at 11:15am | | 1-4 | | X\$3 | |

| | | | | | |
|--|-----------|--------|--|------|--|
| Oyu Oro Afro-Cuban Dance Ensemble | 300 seats | prek-6 | | X\$3 | |
| Tue. May 31 at 9:15am | | prek-6 | | X\$3 | |
| Tue. May 31 at 11:15am | | prek-6 | | X\$3 | |
| Wed. June 1 at 11:15am | | prek-6 | | X\$3 | |
| Thurs. June 2 at 9:15am | | prek-6 | | X\$3 | |
| Thurs. June 2 at 11:15am | | prek-6 | | X\$3 | |
| Fri. June 3 at 11:15am | | prek-6 | | X\$3 | |

| | | | | | |
|--------------------------|-----------|--------|--|------|--|
| FESTIVAL SURPRISE | 300 seats | prek-2 | | X\$3 | |
| Tue. May 31 at 11:50am | | prek-2 | | X\$3 | |
| Wed. June 1 at 9:15am | | prek-2 | | X\$3 | |
| Wed. June 1 at 11:15am | | prek-2 | | X\$3 | |
| Thurs. June 2 at 1:15pm | | prek-2 | | X\$3 | |
| Fri. June 3 at 9:15am | | prek-2 | | X\$3 | |
| Fri. June 3 at 11:15am | | prek-2 | | X\$3 | |

TOTAL AMOUNT ENCLOSED \$

Announcing The Flint Hills International Children's Festival

Corbrian the Dinosaur

MAY 31-JUNE 3
RECOMMENDED GRADES: 2-8

Corbrian the Dinosaur is a truly unique theater experience featuring larger-than-life, glow-in-the-dark characters that light up the stage. Created by a magical scientist, Corbrian is much more than a pet! As Corbrian's animal instincts take over, the scientist creates a heart for him and encourages him to experience life beyond the scientist's workshop. Join Corbrian as he meets a gangly ostrich, a beautiful fish and a menacing red dinosaur, that help him learn the value of compassion, friendship and love.

The Man Who Planted Trees

MAY 31-JUNE 3
RECOMMENDED GRADES: 1-4

This magical, comical and multi-sensory performance by Puppet State Theater Company of Scotland is an adaptation of Jean Giono's ecological fable and tells the inspiring story of a French shepherd and his dog. Together they set out to restore a ruined ecosystem by planting a forest, acorn by acorn, tree by tree. An unforgettable story, *The Man Who Planted Trees* reminds us that one man and his dog can change the world!

Oyu Oro Afro-Cuban Dance Ensemble

MAY 31-JUNE 3
RECOMMENDED GRADES: prek-6

Oyu Oro fills the stage with their energetic fusion of dance, rhythm and song that pay tribute to Afro-Cuban culture. Oyu Oro explores traditional dance forms that derive from the cultures of West Africa such as the Yoruba and Congo; the rich Haitian influences that remain in Cuba of vodu and Haitian bembé; along with popular dances of Cuban heritage, including rumba and conga.

Festival Surprise

MAY 31-JUNE 3
RECOMMENDED GRADES: prek-2

Capture your students' imaginations with a theater treat from across the globe. We'll announce this show in early fall, but you will want to purchase your tickets now!

FLINT HILLS International Children's Festival

ORDWAY

TICKETS GO ON SALE SEPTEMBER 3, 2010
FOR MORE INFORMATION OR TO PLACE AN ORDER PLEASE CALL 651.282.3115
FAX COMPLETED ORDERS TO 651.252.1855



ORDWAY | Education

651.282.3115 | fax 651.215.2135 | ordway.org/education | blog.ordwayeducationnews.blogspot.com

2010-2011 Performing Arts Classroom Season

Bridgman/Packer Dance

OCTOBER 13, 2010
RECOMMENDED GRADES: 6-12

In an exciting and innovative blend of live performance, video projection, real-time cameras, animation, and original music, Bridgman/Packer Dance presents a fantastical exploration of identity, relationship, and the human psyche. Choreographer/dancers Art Bridgman and Myrna Packer magically populate the stage with images of themselves, creating a performance where the live meets the virtual, and where image and reality collide.

CONTRA-TIEMPO

NOVEMBER 18 & 19, 2010
RECOMMENDED GRADES: 4-12

Dedicated to transforming the world through dance, the social activist dance company CONTRA-TIEMPO takes Latin social dance to new heights by infusing elements of salsa, hip-hop and contemporary dance theater in physically intense and energizing performances. Dancing to both salsa music and poetry, the company explores identity, immigration and pop culture through movement.

Angélique Kidjo

JANUARY 20, 2011
RECOMMENDED GRADES: 4-12

Angélique Kidjo is an Afro-pop star who has a style all her own, never limited by genre expectations. Growing up in Benin, Ms. Kidjo not only heard African music, but was inspired by American soul, funk, jazz, and Indian Bollywood. They all influenced the unique style of music that she creates and applies to songs she learned from Miriam Makeba, Aretha Franklin and Curtis Mayfield. Through her music, life and exuberant commitment to advocacy, Ms. Kidjo exemplifies unity and peace.

Terrance Simien & The Zydeco Experience

FEBRUARY 14, 15 & 16, 2011
RECOMMENDED GRADES: K-6

Travel to Louisiana with Grammy-award winning artist Terrance Simien & The Zydeco Experience as they share Creole culture and history through Zydeco music. The Creoles of Southern Louisiana are a blend of African, French, Spanish and Native American people. Playing the accordion, rubboard, drums, keyboard and guitar, Mr. Simien and his band take you on a multicultural musical tour that will have you up and dancing!

BeijingDance/LDTX

APRIL 6 & 7, 2011
RECOMMENDED GRADES: 6-12

Born out of a controversial time of cultural change in China, BeijingDance/LDTX became China's first professional dance company founded independently from government. Artistic Director Willy Tsao, one of China's foremost pioneers of modern dance, introduces the political and cultural context of contemporary choreography in China through two pieces. *The Cold Dagger*, based on the Chinese chess game GO, includes a contemporary version of ribbon dancing as well as martial arts-inspired choreography. *All River Red* is the company's version of Stravinsky's *The Rite of Spring*, commissioned World Premiere supported in part by a Joyce Award from the Joyce Foundation.

TU Dance

MAY 4 & 5, 2011
RECOMMENDED GRADES: 4-12

Led by Alvin Ailey veterans Toni Pierce-Sands and Uri Sands, TU Dance's work aims to reveal the connective power of dance, celebrating a beautiful diversity on stage. Inspired by the depictions of urban life and dance in the paintings of African American artist Ernie Barnes, choreographer Uri Sands brings Barnes' work from the canvases to the stage using contemporary and modern forms of movement in this commissioned World Premiere supported in part by a Joyce Award from the Joyce Foundation.

This season is made possible by the generous support of the Ordway Foundation, the National Endowment for the Arts, with additional contributions from the Minnesota State Arts Center, the Minnesota State Arts Center Foundation, and Land O'Lakes Foundation.

