

TECHNICAL MANUAL
UNIT, DIRECT SUPPORT
AND GENERAL SUPPORT MAINTENANCE
REPAIR PARTS AND SPECIAL TOOLS LIST

MIXER, ROTARY TILLER

SEAMAN-MAXON, INC.
MODEL T0730H-KEG

NSN
3895-01-331-8560

Approved for public release; distribution is unlimited

HEADQUARTERS, DEPARTMENT OF THE ARMY
7 AUGUST 1992

UNIT, DIRECT SUPPORT AND
 GENERAL SUPPORT MAINTENANCE
 REPAIR PARTS AND SPECIAL TOOLS LIST

FOR

SEAMAN-MAXON, INC.
 MODEL TO730H-KEG
 MIXER, ROTARY TILLER
 (3895-01-331-8560)

Current as of 15 April 1992

REPORTING ERRORS AND RECOMMENDING IMPROVEMENTS

You can help improve this manual. If you find any mistakes or if you know of a way to improve the procedures, please let us know. Mail your letter, DA Form 2028 (Recommended Changes to Publications and Blank Forms), or DA Form 2028-2 located in the back of this manual direct to: Commander, U.S. Army Tank-Automotive Command, ATTN: AMSTAMB, Warren, MI 48397-5000. A reply will be furnished to you.

TABLE OF CONTENTS

	Page	Illus/ Figure
Section I. INTRODUCTION.....	1	
Section II. REPAIR PARTS LIST	1-1	
Group 01 Engine		
0100 Drive Engine Assembly	1-1	1
0101 Cylinder Block	2-1	2
0101 Cylinder Head.....	3-1	3
0102 Crankshaft, Vibration Dampener.....	4-1	4
0103 Flywheel, Flywheel Housing.....	5-1	5
0104 Pistons, Connecting Rods.....	6-1	6
0105 Valve Covers.....	7-1	7
0105 Valves, Rocker Arms, Camshaft, Camshaft Followers	8-1	8
0105 Poppet Cover	9-1	9
0105 Gear Cover, Timing System.....	10-1	10
0105 Engine Data Plate	11-1	11
0106 Breather Hose	12-1	12
0106 Dipstick, Oil Pan.....	13-1	13
0106 Oil Cooler, Oil Filter, Oil Pump	14-1	14
0106 Oil Lines, Oil Fittings	15-1	15
0106 Oil Sampling Valve Assembly	15A-1	15A

Approved for public release; distribution is unlimited.

		Page	Illus/ Figure
Group 01	Engine (continued)		
	0108 Exhaust Manifold.....	16-1	16
	0109 Accessory Drive, Adapter, Pump Installation	17-1	17
Group 02	Clutch		
	0200 Clutch Drive Assembly	18-1	18
	0200 Clutch Group Assembly.....	19-1	19
	0200 Clutch Mounting, Lubrication Lines	20-1	20
Group 03	Fuel System		
	0301 Fuel Injector.....	21-1	21
	0302 Fuel Transfer Pump	22-1	22
	0302 Fuel Injection Pump - Lower.....	23-1	23
	0302 Fuel Injection Pump - Upper	24-1	24
	0302 Pump and Drive Gear Installation	25-1	25
	0304 Air Cleaner Assembly.....	26-1	26
	0305 Air Intake System	27-1	27
	0305 Turbocharger Assembly	28-1	28
	0305 Turbocharger Installation.....	29-1	29
	0306 Fuel Injection Pump Lines	30-1	30
	0306 Fuel Filter Lines.....	31-1	31
	0306 Fuel Supply/Return Lines	32-1	32
	0306 Fuel/Hydraulic Tank	33-1	33
	0306 Fuel Can Assembly	34-1	34
	0309 Fuel Filter Assembly.....	35-1	35
	0309 Sediment Bowl Filter	36-1	36
	0309 Fuel Tank Strainer	37-1	37
	0312 Dual Control Assembly.....	38-1	38
	0312 Dual Control Assembly Installation.....	39-1	39
	0312 Throttle Linkage.....	40-1	40
Group 04	Exhaust System		
	0401 Exhaust System	41-1	41
Group 05	Cooling System		
	0501 Radiator Assembly	42-1	42
	0502 Radiator Shroud, Grille, Supports	43-1	43
	0502 Radiator/Grille Installation	44-1	44
	0503 Inlet/Outlet Manifolds, Thermostat, Hoses	45-1	45
	0504 Water Pump	46-1	46
	0505 Fan, Fan Belt, Belt Tensioner.....	47-1	47
Group 06	Electrical System		
	0601 Alternator Assembly	48-1	48
	0601 Fan, Alternator Installation	49-1	49
	0603 Starting Motor Assembly	50-1	50
	0603 Starting Motor Installation.....	51-1	51
	0607 24V Instrument Panel.....	52-1	52
	0607 24V Instrument Panel Wiring	53-1	53
	0607 Additive System Control Box.....	54-1	54
	0607 Additive System Control Box Wiring	55-1	55
	0608 Voltage Reducer	56-1	56
	0608 Voltage Reducer Wiring	57-1	57
	0608 Miscellaneous Electrical Items	58-1	58
	0608 Alternator Wiring Harness	59-1	59
	0608 24V Solenoid.....	60-1	60

		Page	Illus/ Figure
Group 06	Electrical System (continued)		
	0608 Conduit Installation.....	61-1	61
	0609 24V Floodlights.....	62-1	62
	0610 Oil Pressure/Water Temperature Sending Units.....	63-1	63
	0611 Horn, Horn Switch.....	64-1	64
	0611 Horn Wiring.....	65-1	65
	0611 Back-Up Alarm Assembly.....	66-1	66
	0612 Battery, Battery Hold Down.....	67-1	67
	0612 Battery, Battery Box Assembly.....	68-1	68
	0612 Battery Wiring.....	69-1	69
	0613 Emergency Steering Wiring.....	70-1	70
	0613 Floodlight/Back-Up Alarm Wiring Harness.....	71-1	71
	0613 Main Wiring Harness.....	72-1	72
Group 07	Transmission		
	0705 Two-Speed Shift Linkage.....	73-1	73
	0710 Two-Speed Range Box.....	74-1	74
	0721 Hydrostatic Pump - Front.....	75-1	75
	0721 Hydrostatic Pump - Rear.....	76-1	76
	0721 Pump Cover, Pump Installation.....	77-1	77
	0721 Hydrostatic Motor.....	78-1	78
	0721 Hydrostatic Motor Manifold Valve Assembly.....	79-1	79
	0721 Hydrostatic Motor Installation.....	80-1	80
	0721 Pump Control Linkage.....	81-1	81
	0721 Hydraulic Lines and Fittings.....	82-1	82
	0721 Hydraulic Lines and Fittings.....	83-1	83
Group 09	Propeller, Propeller Shafts, Universal Joints, Coupler and Clamp Assembly		
	0900 Pump Drive Shaft Assembly.....	84-1	84
	0900 Pump Drive Shaft Installation.....	85-1	85
	0900 PTO Drive Shaft Assembly.....	86-1	86
	0900 PTO Shaft Guard Assembly.....	87-1	87
	0900 Drive Shaft Assembly.....	88-1	88
	0900 Drive Shaft Installation.....	89-1	89
	0900 Pillow Block Assembly.....	90-1	90
	0900 Pillow Block Installation.....	91-1	91
Group 10	Front Axle		
	1000 Front Axle Assembly.....	92-1	92
Group 11	Rear Axle		
	1100 Rear Axle.....	93-1	93
	1102 Carrier Assembly.....	94-1	94
	1103 Planetary Drive.....	95-1	95
Group 12	Brakes		
	1201 Parking Brake Installation.....	96-1	96
	1202 Brake Assembly.....	97-1	97
	1204 Wheel Cylinder Assembly.....	98-1	98
	1204 Master Cylinder Assembly.....	99-1	99
	1204 Brake Lines, Master Cylinder Installation.....	100-1	100
	1206 Brake Pedal Linkage.....	101-1	101
Group 13	Wheels and Tracks		
	1311 Brake Drums.....	102-1	102
	1311 Front Wheel Bearings and Hubs.....	103-1	103

		Page	Illus Figure
Group 13	Wheels and Tracks (continued)		
	1311 Rear Wheel Bearings and Hubs.....	104-1	104
	1313 Front Rim and Tire Assembly.....	105-1	105
	1313 Rear Rim and Tire Assembly	106-1	106
Group 14	Steering		
	1401 Tie Rod Assembly	107-1	107
	1401 Steering Wheel, Steering Column.....	108-1	108
	1407 Steering Control Assembly	109-1	109
	1410 Emergency Steering Motor and Pump Assembly.....	110-1	110
	1410 Emergency Steering Motor and Pump Installation.....	111-1	111
	1411 Hydraulic Lines and Fittings	112-1	112
	1411 Hydraulic Lines and Fittings	113-1	113
	1412 Hydraulic Steering Cylinder Assembly	114-1	114
Group 15	Frame, Towing Attachments, Drawbars and Articulation Systems		
	1501 Main Frame Assembly.....	115-1	115
	1501 Pump Frame, Sensor Mount	116-1	116
	1501 Bumper/Tool Box	117-1	117
Group 18	Body, Cab, Hood and Hull		
	1801 Removable ROPS/FOPS	118-1	118
	1801 Hood Assembly	119-1	119
	1801 Engine Compartment Doors.....	120-1	120
	1801 Control Panel, Vandal Cover, Strikers, Hood Clamp	121-1	121
	1802 Fenders	122-1	122
	1805 Forward Floor Plate.....	123-1	123
	1805 Rear Floor With Prop Rod	124-1	124
	1806 Operators Seat Assembly	125-1	125
Group 22	Body, Chassis and Hull Accessory Items		
	2202 Additive System Asphalt Hose Assembly.....	126-1	126
	2202 Acoustical Foam Installation.....	127-1	127
	2210 Identification Plate Installation.....	128-1	128
Group 24	Hydraulic and Fluid Systems		
	2401 Additive Pump/Motor Assembly	129-1	129
	2401 Pump/Motor Installation.....	130-1	130
	2401 Hydraulic Pump Assembly	131-1	131
	2402 Valve Bank Assembly.....	132-1	132
	2402 Valve Bank Installation	133-1	133
	2402 Flow Control Valve Assembly.....	134-1	134
	2402 Flow Control Valve Installation.....	135-1	135
	2403 Valve Bank Handle Assembly	136-1	136
	2406 Hydraulic Filter Assembly	137-1	137
	2406 Hydraulic Tank Strainers	138-1	138
	2406 Hydraulic Lines and Fittings	139-1	139
	2406 Hydraulic Lines and Fittings	140-1	140
	2406 Hydraulic Lines and Fittings	141-1	141
	2406 Hydraulic Lines and Fittings	142-1	142
	2406 Hydraulic Lines and Fittings	143-1	143
	2407 Boom Cylinder Assembly	144-1	144
	2407 Boom Cylinder Installation.....	145-1	145
	2407 Gate Cylinder Assembly.....	146-1	146
	2407 Gate Cylinder Installation	147-1	147
	2407 Spray Bar Cylinder Assembly.....	148-1	148

	Page	Illus/ Figure
Group 24	Hydraulic and Fluid Systems (continued)	
	2407	Spray Bar Cylinder Installation 149-1 149
Group 47	Gages (Non-Electrical), Weighing and Measuring Devices	
	4701	Ground Speed Indicator Assembly..... 150-1 150
	4702	Fuel Cap/Gage Assembly, Oil Level/Temperature Gage..... 151-1 151
	4702	Hydraulic Filter Indicator and Hose 152-1 152
	4705	Air Cleaner Indicator and Hose 153-1 153
Group 55	Pumps	
	5500	Additive System Pump Assembly..... 154-1 154
	5500	Additive System Pump Installation..... 155-1 155
	5507	Additive System Pump Drive..... 156-1 156
	5507	Pump Drive Coupling Guard 157-1 157
	5510	Line Strainer Assembly 158-1 158
	5510	Additive Pump Inlet/Outlet Components 159-1 159
Group 73	Concrete and Asphalt Equipment Components	
	7303	Travel Speed, Application Rate, Proportioning Systems..... 160-1 160
	7303	Rotor/Hood Depth Controls 161-1 161
	7304	21 Valve Rotor Hood..... 162-1 162
	7305	Rotor Drive 163-1 163
	7317	Spray Valve Assembly..... 164-1 164
	7317	Spray Bar..... 165-1 165
	7317	Spray Bar Installation 166-1 166
	7319	Additive System Fluid Lines and Fittings..... 167-1 167
	7319	Ball Valve Assembly..... 168-1 168
	7320	Additive System Boom and Chain..... 169-1 169
Group 74	Cranes, Shovels and Earth Moving Equipment Components	
	7465	Rotor Assembly 170-1 170
	7465	Rotor Assembly Boom and Guides 171-1 171
Group 94	9401	Repair Kits..... Kits -1
Group 95	9501	Bulk Items Bulk -1
Section III.	SPECIAL TOOLS LIST - Not Applicable	
Section IV.	CROSS-REFERENCE INDEXES I-1	
	NATIONAL STOCK NUMBER INDEX I-1	
	PART NUMBER INDEX I-24	
	FIGURE AND ITEM NUMBER INDEX..... I-78	

**UNIT, DIRECT SUPPORT, AND GENERAL SUPPORT MAINTENANCE
REPAIR PARTS AND SPECIAL TOOLS LIST**

SECTION I. INTRODUCTION

1. SCOPE

This RPSTL lists and authorizes spares and repair parts; special tools; special test, measurement, and diagnostic equipment (TMDE); and other special support equipment required for performance of unit, direct support, and general support maintenance of the mixer, rotary tiller. It authorizes the requisitioning, issue, and disposition of spares, repair parts and special tools as indicated by the source, maintenance, and recoverability (SMR) codes.

2. GENERAL

In addition to Section I, Introduction, this Repair Parts and Special Tools List is divided into the following sections:

- a. *Section II. Repair Parts List.*** A list of spares and repair parts authorized by this RPSTL for use in the performance of maintenance. The list also includes parts which must be removed for replacement of the authorized parts. Parts Lists are composed of functional groups in ascending alphanumeric sequence, with the parts in each group listed in ascending figure and item number sequence. Bulk materials are listed by item name in FIG BULK at the end of the section. Repair parts kits or sets are listed separately in their own functional group within Section II. Repair parts for repairable special tools are also listed in the section.
- b. *Section III. Special Tools List.*** A list of special tools, special TMDE, and other special support equipment authorized by this RPSTL (as indicated by Basis of Issue (BOI) information in DESCRIPTION AND USABLE ON CODE (UOC) column) for the performance of maintenance.
- c. *Section IV. Cross-Reference Indexes.*** A list, in National item identification number (NIIN) sequence, of all National stock numbered items appearing in the listings, followed by a list in alphanumeric sequence of all part numbers appearing in the listings. National stock numbers and part numbers are cross-referenced to each illustration figure and item number appearance. The figure and item number index lists figure and item numbers in alphanumeric sequence and cross-references NSN, CAGE, and part numbers.

3. EXPLANATION OF COLUMNS (SECTION II AND III).

- a. *ITEM NO. (Column (1)).*** Indicates the number used to identify items called out in the illustration.
- b. *SMR CODE (Column (2)).*** The Source, Maintenance, and Recoverability (SMR) code is a 5-position code containing supply/requisitioning information, maintenance category authorization criteria, and disposition instruction, as shown in the following breakout:

1
2 THROUGH 6

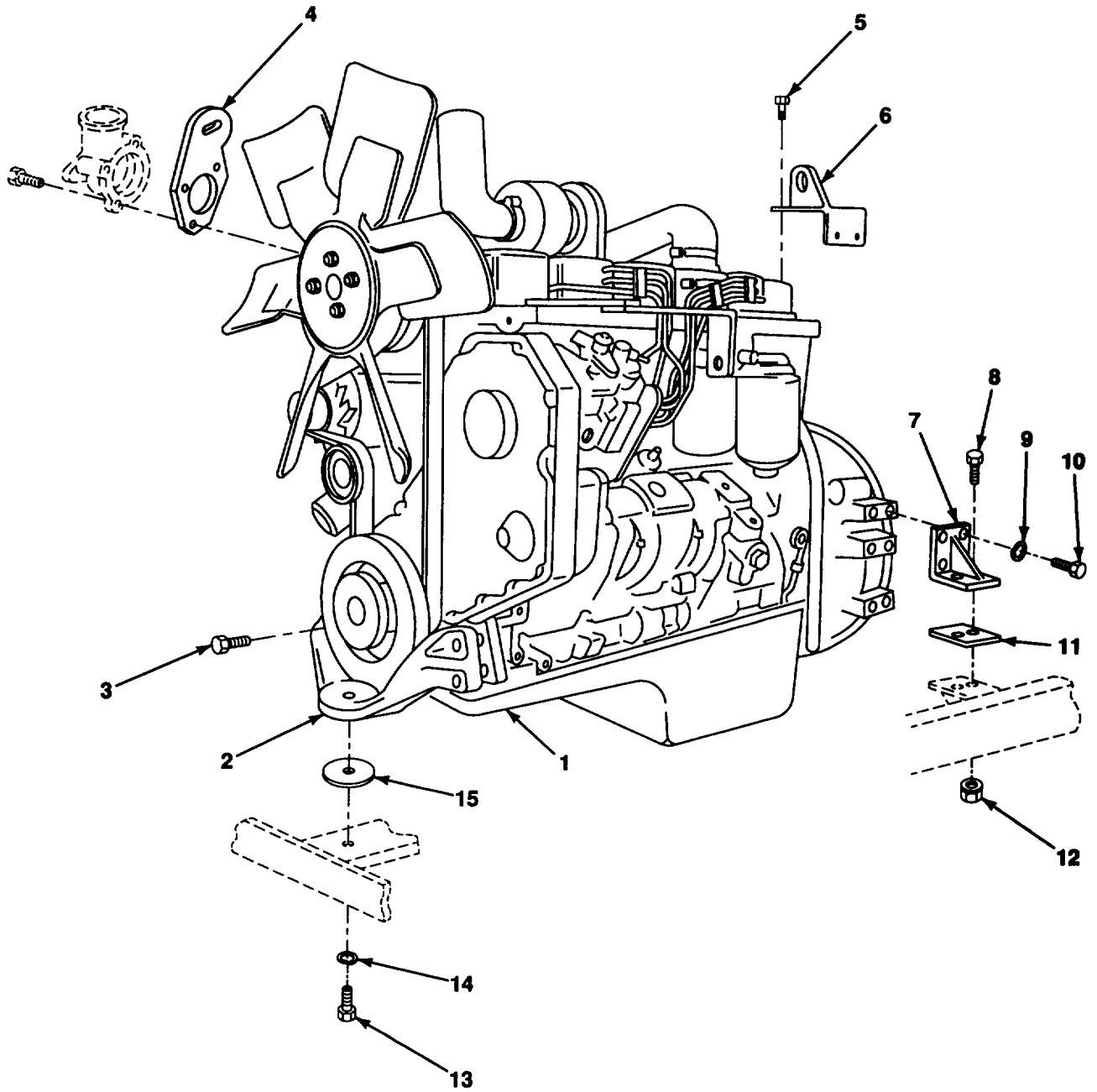


Figure 1. Drive Engine Assembly

SECTION II					
(1)	(2)	(3)	(4)	(5)	(6)
ITEM	SMR		PART		
NO	CODE	CAGEC	NUMBER	DESCRIPTION AND USABLE ON CODES (UOC)	QTY
GROUP 01 ENGINE					
GROUP 0100 ENGINE ASSEMBLY					
FIG. 1 DRIVE ENGINE ASSEMBLY					
1	PBFHH	15434	44514568	ENGINE, DIESEL.....	1
2	XDFZZ	15434	3916665	.SUPPORT, FRONT ENGINE.....	1
3	PAFZZ	15434	3278480	.SCREW, CAP, HEXAGON H M12 X 1.75 X 70MM.....	4
4	PFOZZ	15434	3903757	.BRACKET, ENGINE LIFT.....	1
5	PAOZZ	15434	3901249	.SCREW, CAP, HEXAGON H M12 X 1, 75 X 25MM.....	2
6	XDOZZ	64559	74002518	.EAR, LIFT (MODIFIED).....	1
7	XDFZZ	64559	74000023	MOUNT, ENG UPPER.....	2
8	PAFZZ	96906	MS90728-114	SCREW, CAP, HEXAGON H 1/2-13 UNC X 1 3/4 GR8....	4
9	PAFZZ	96906	MS35338-48	WASHER, LOCK 1/2.....	8
10	PAFZZ	24617	11500731	SCREW, CAP, HEXAGON H 12M X 1.75 X 30MM.....	8
11	MFFZZ	64559	74001930	PAD, ENGINE, REAR CUT FROM P/N 47-71760-24 (3X125).....	2
12	PAFZZ	96906	MS51922-33	NUT, SELF-LOCKING, HE 1/2-13 UNC-2B.....	4
13	PAFZZ	24617	11501718	SCREW, CAP, HEXAGON H 16M X 2.0 X 35MM.....	1
14	PAFZZ	96906	MS35338-48	WASHER, LOCK 1/2.....	1
15	MFFZZ	64559	74001929	PAD, ENGINE, FRONT CUT FROM P/N 47-71760-24 (3X125).....	1

END OF FIGURE

10
11 THROUGH 17

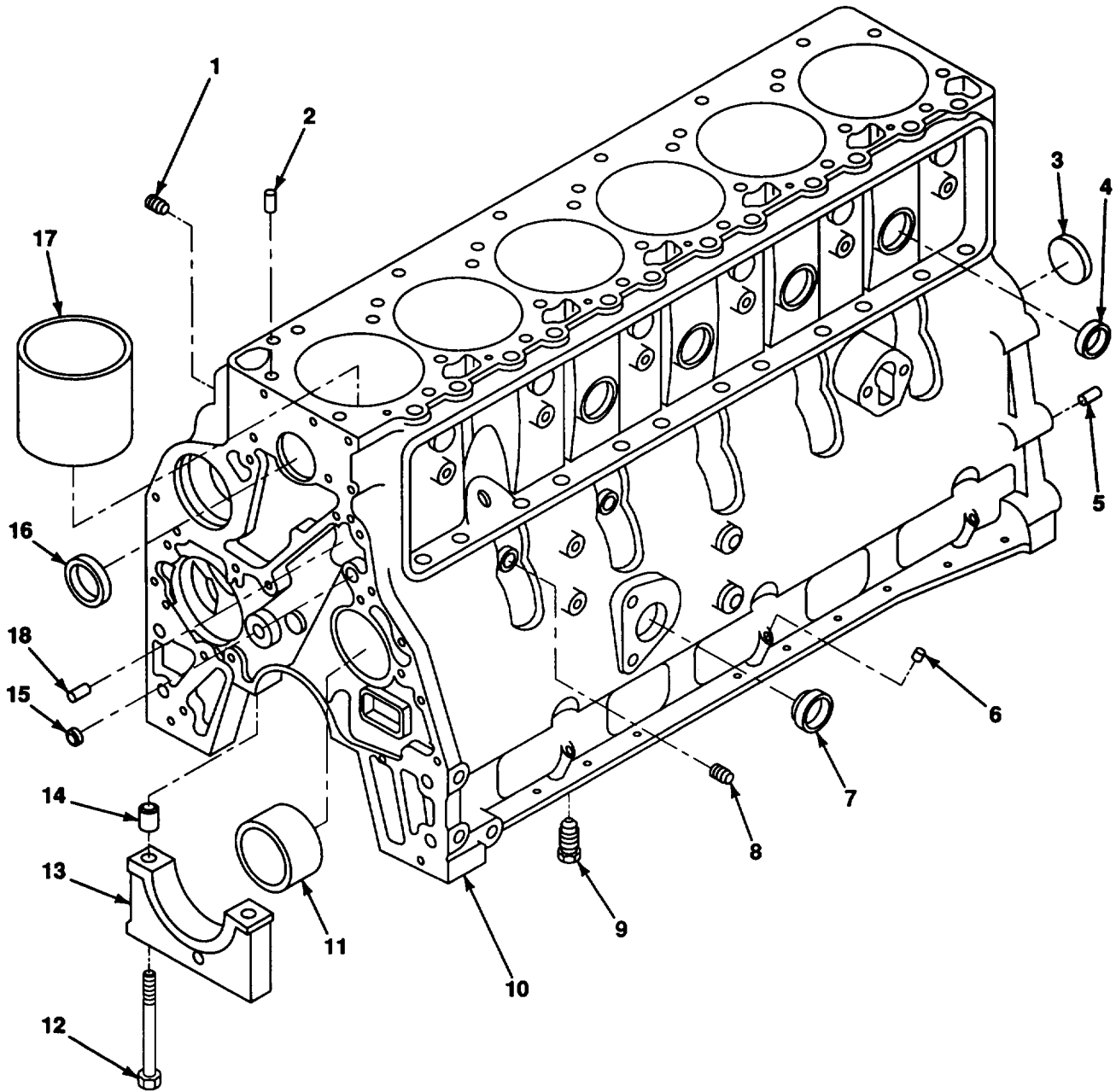


Figure 2. Cylinder Block

SECTION II

(1) ITEM NO	(2) SMR CODE	(3) CAGEC	(4) PART NUMBER	(5) DESCRIPTION AND USABLE ON CODES (UOC)	(6) QTY	
GROUP 0101 CRANKCASE, BLOCK, CYLINDER HEAD						
FIG. 2 CYLINDER BLOCK						
1	PAFZZ	15434	3008468	PLUG, PIPE 1/2 NPT	1	
2	PAFZZ	15434	3902343	PIN, STRAIGHT, HEADLE M16 X 10MM	2	
3	PAFZZ	15434	3900687	PLUG, EXPANSION.....	1	
4	PAFZZ	15434	3007635	PLUG, EXPANSION 1 INCH.....	4	
*	5	PAFZZ	15434	3900068	BEARING, SLEEVE M18 X 10MM.....	2
6	PAFZZ	15434	3900955	PLUG, EXPANSION.....	2	
7	PAFZZ	15434	3900958	PLUG, EXPANSION.....	1	
8	PAFZZ	15434	3906619	PLUG, PIPE 1/8 NPT	2	
*	9	KFHZZ	15434	3919002	NOZZLE, PISTON COOL, PART OF KIT P/N 3802376	6
10	PFHHH	15434	3916255	ENGINE BLOCK, DIESEL.....	1	
11	PAHZZ	15434	3901306	.CAMBEARING	1	
11	PAHZZ	15434	3904369	.BEARING, SLEEVE	1	
11	PAHZZ	15434	3903242	.BUSHING, SLEEVE	1	
12	PAHZZ	15434	3904217	.SCREW, CAP, HEXAGON H M14 X 2.00 X 119MM	14	
*	13	PFHZZ	15434	3900967	.CAP, MAIN BEARING.....	7
*	14	PAHZZ	15434	3900068	.BEARING, SLEEVE M18 X 10MM.....	14
15	PAHZZ	15434	3900956	.PLUG, EXPANSION 17.73MM.....	3	
16	PAHZZ	15434	3900965	.PLUG, EXPANSION 17.73MM.....	6	
17	PFHZZ	15434	3904166	.CYLINDER SLEEVE	6	
18	PAFZZ	15434	3900257	PIN, STRAIGHT, HEADLE M10 X 16MM	2	

END OF FIGURE

5
6 THROUGH 12

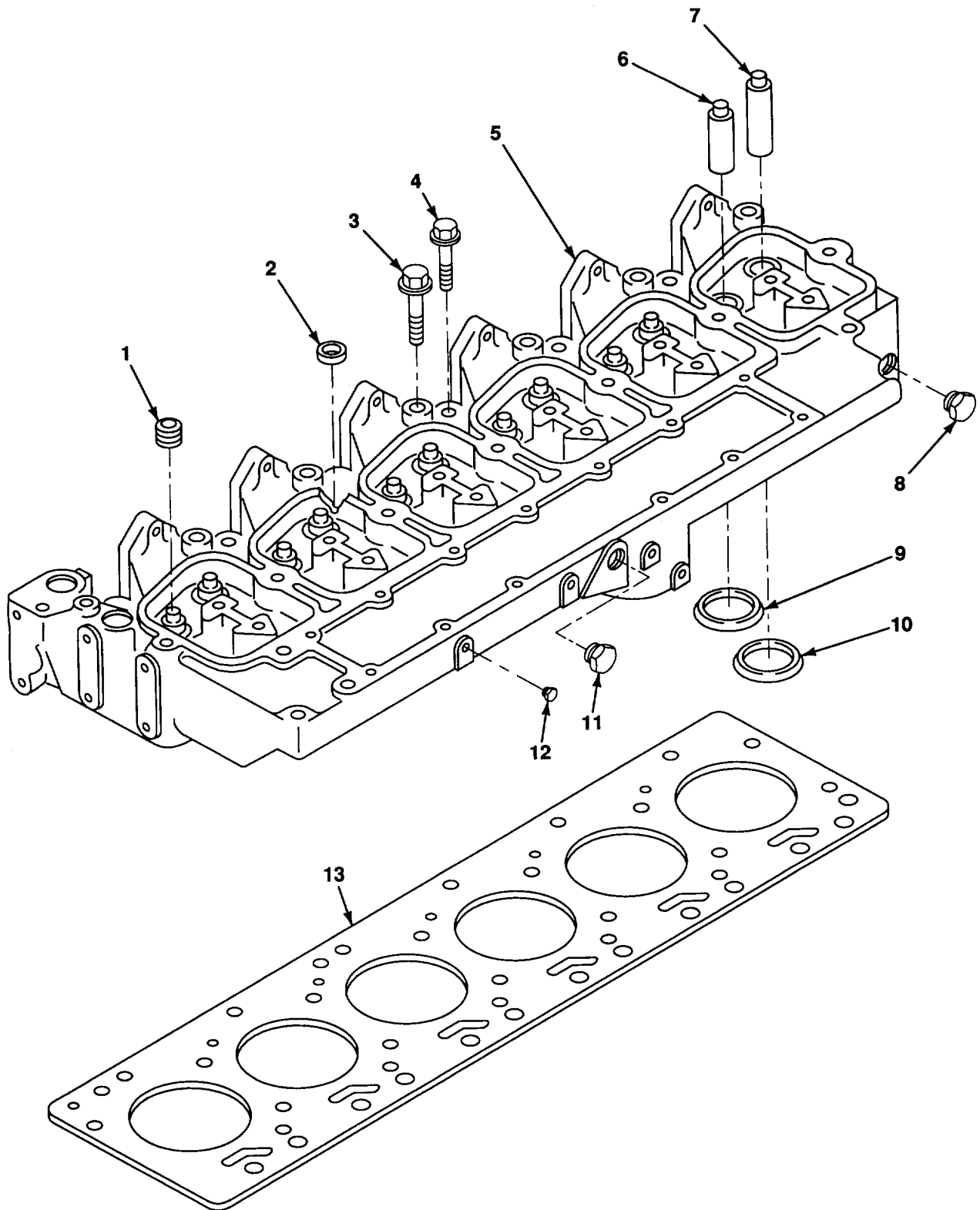


Figure 3. Cylinder Head

SECTION II

TM5-3895-369-24PC01

(1) ITEM NO	(2) SMR CODE	(3) CAGEC	(4) PART NUMBER	(5) DESCRIPTION AND USABLE ON CODES (UOC)	(6) QTY
GROUP 0101 CRANKCASE, BLOCK, CYLINDER HEAD					
FIG. 3 CYLINDER HEAD					
* 1	PFHZZ	15434	3901097	SEAL, VALVE STEM PART OF KIT P/N 3802226 PART... OF KIT P/N 3802227 PART OF KIT P/N 3802228	12
* 2	PFHZZ	15434	3902606	PLUG, EXPANSION.....	5
3	PAFZZ	15434	3920780	BOLT, MACHINE	14
4	PAFZZ	15434	3920779	SCREW, CAP, HEXAGON H.....	6
5	PFFHH	15434	3920486	CYLINDER HEAD, DIESE	1
6	PAHZZ	15434	3904408	.GUIDE, VALVE STEM THICK WALL 60.50MM LONG INTAKE	6
7	PAHZZ	15434	3904409	.GUIDE, VALVE STEM THICK WALL 51.75MM LONG EXHAUST	6
7	PAHZZ	15434	3906206	.GUIDE, VALVE STEM THIN WALL USED ON BOTH INTAKE AND EXHAUST.....	12
8	PAHZZ	15434	3008469	.PLUG, PIPE	1
9	PAHZZ	15434	3906854	.SEAT, VALVE	6
10	PAHZZ	15434	3904105	.SEAT, VALVE	6
11	PAHZZ	15434	3008468	.PLUG, PIPE 1/2 NPT	5
12	PAHZZ	15434	3008465	.PLUG, PIPE	2
13	KFFZZ	15434	3917357	GASKET, CYLINDER HO PART OF KIT P/N 3802226.....	1
* 13	PFFZZ	15434	3915723	GASKET 0.15MM OVERSIZE PART OF KIT P/N 3802227	1
* 13	PFFZZ	15434	3915724	GASKET 0.50MM OVERSIZE PART OF KIT P/N 3802	1

END OF FIGURE

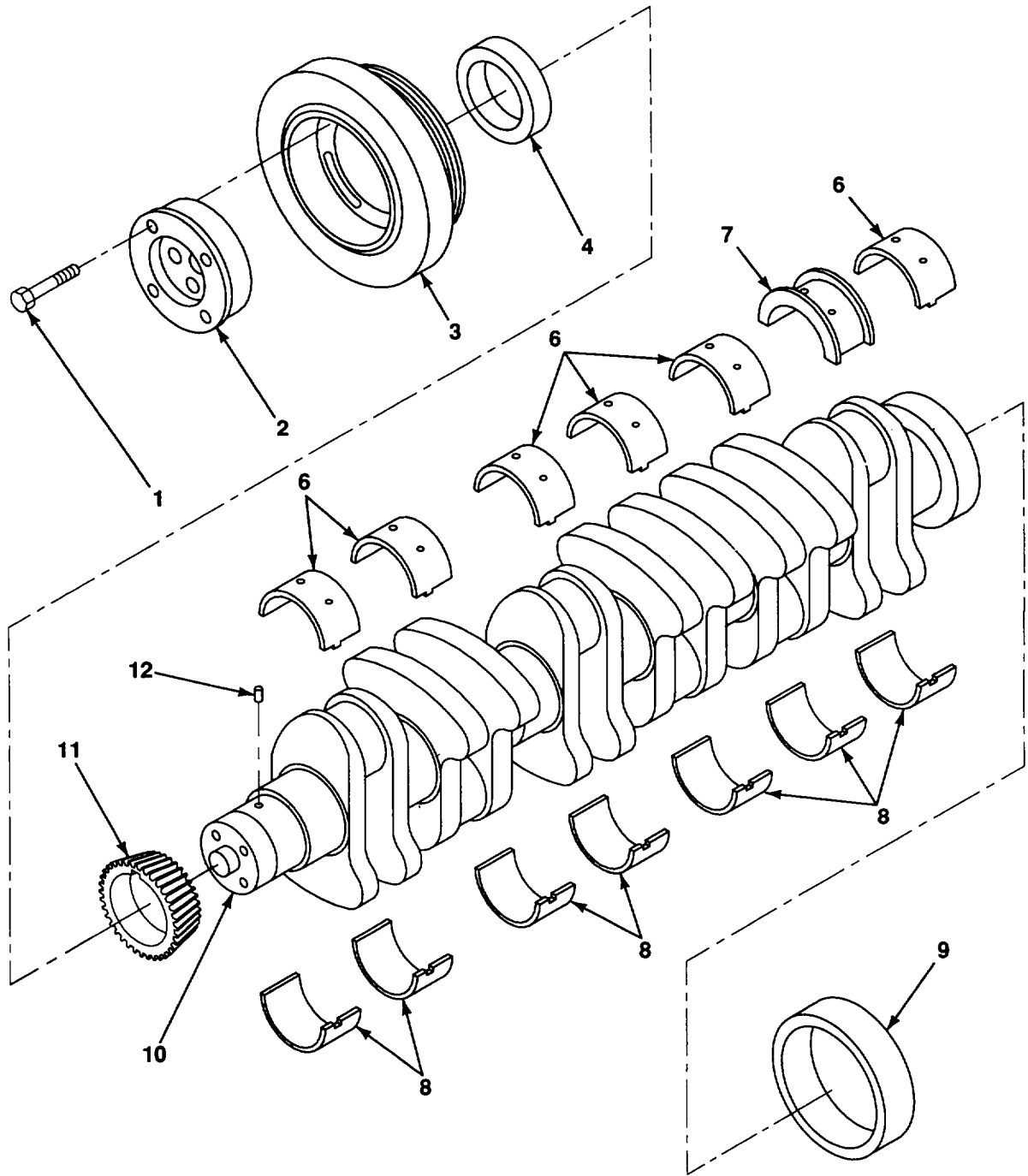
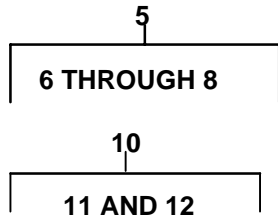


Figure 4. Crankshaft, Vibration Dampener

SECTION II

TM5-3895-369-24PCO1

(1) ITEM NO	(2) SMR CODE	(3) CAGEC	(4) PART NUMBER	(5) DESCRIPTION AND USABLE ON CODES (UOC)	(6) QTY
GROUP 0102 CRANKSHAFT					
FIG. 4 CRANKSHAFT, VIBRATION DAMPENER					
1	PAFZZ	15434	3903857	BOLT, MACHINE M12 X 1.25 X 36MM	4
2	PAFZZ	15434	3903829	PLATE, RETAINING, SHA.....	1
3	PAFZZ	15434	3914454	DAMPENER, VIBRATION.....	1
4	PAHZZ	15434	3906080	BEARING, SLEEVE	1
5	PAHZZ	15434	3802070	BEARING SET, SLEEVE STANDARD	1
5	PAHZZ	15434	3802071	BEARING HALF SET, SL 0.010 OVERSIZE	1
5	PAHZZ	15434	3802072	BEARING HALF SET, SL 0.020 OVERSIZE	1
5	PAHZZ	15434	3802073	BEARING SET, SLEEVE 0.030 OVERSIZE	1
5	PAHZZ	15434	3802074	BEARING SET, SLEEVE 0.040 OVERSIZE	1
6	XAHZZ	15434	3901090	.BEARING, SLEEVE	6
7	XAHZZ	15434	3802010	.BEARING HALF SET. SL.....	1
8	XAHZZ	15434	3901150	.BEARING, SLEEVE	7
9	PAHZZ	15434	3906081	BEARING, SLEEVE	1
10	PAHHH	15434	3908032	CRANKSHAFT, ENGINE	1
11	PAHZZ	15434	3919680	.GEAR, SPUR	1
12	PAHZZ	15434	3904483	.PIN, STRAIGHT, HEADLE M10 X 60MM	1

END OF FIGURE

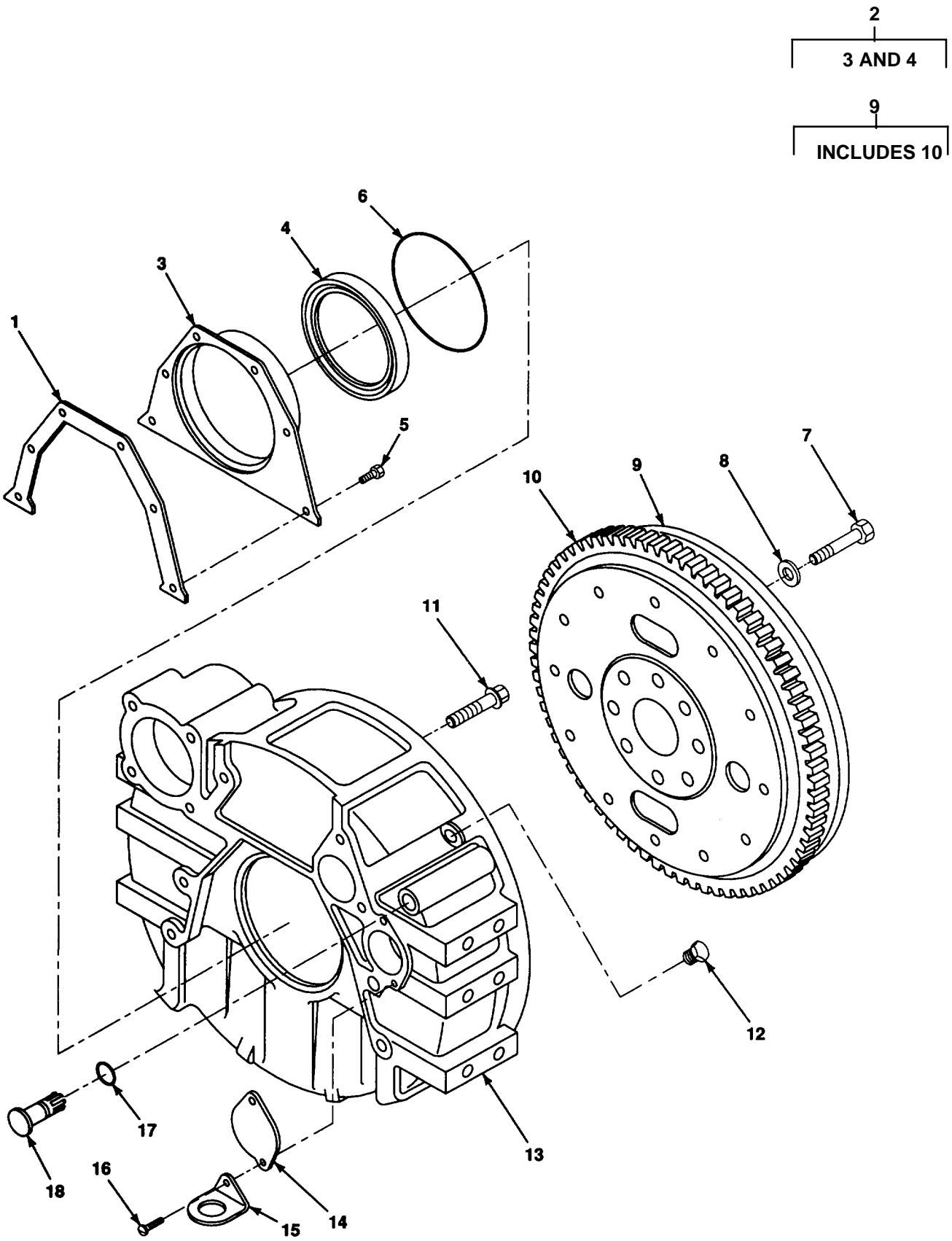


Figure 5. Flywheel, Flywheel Housing

SECTION II

(1) ITEM NO	(2) SMR CODE	(3) CAGEC	(4) PART NUMBER	(5) DESCRIPTION AND USABLE ON CODES (UOC)	(6) QTY
GROUP 0103 FLYWHEEL ASSEMBLY					
FIG. 5 FLYWHEEL, FLYWHEEL HOUSING					
*	1	PFFZZ 15434	3914386	GASKET PART OF KIT P/N 3802376	1
	2	PFFFF 15434	3910619	COVER, ACCESS.....	1
	3	XDFZZ 15434	3921043	.COVER, REAR.....	1
	4	KFFZZ 15434	3904087	.SEAL, OIL PART OF KIT P/N 3802376	1
	5	PAFZZ 15434	3913638	SCREW, CAP, HEXAGON H M6 X 1.00 X 15	6
*	6	PFFZZ 15434	3912473	PACKING, PREFORMED PART OF KIT P/N 3802376.....	1
	7	PAFZZ 15434	3901395	SCREW, CAP, HEXAGON H M12 X 1.25 X 32MM	8
	8	PAFZZ 15434	3900269	WASHER, FLAT M12.....	8
	9	PFFHH 15434	3914432	FLYWHEEL, ENGINE	1
	10	PAHZZ 15434	3901774	.GEAR, INTERNAL	1
	11	PAFZZ 15434	3920447	SCREW, CAP, HEXAGON, H M12 X 1.75 X 40MMM.....	8
	12	PAFZZ 15434	3904181	PLUG, PIPE 3/4-16 UNF.....	1
*	13	PFFZZ 15434	3903282	HOUSING.....	1
	14	PAFZZ 15434	3908095	COVER, ACCESS.....	1
	15	PAFZZ 15434	3909670	CLAMP, LOOP	1
	16	PAFZZ 15434	3912072	SCREW M8 X 1.25 X 21	2
	17	PAFZZ 15434	3910260	PACKING, PREFORMED	1
	18	PAFZZ 15434	3910248	PLUG, FLYWHEEL HOUSI.....	1

END OF FIGURE